



Exploration Report

(August-September 2017 Reconnaissance Geological Program)

At the

Monster Lake Extension Zone Claims

26 Km South of Chapais, Québec, Canada

Latitude 49°29' N Longitude 74°52' W
NTS Map sheets 32G/10, 32G/06, and 32G/07

April 12, 2018

Prepared for

Blue Thunder Mining Corporation

By

Elaine Ellingham P.Geo.(APGO # 0883)

Ed Thorose, B.Sc.

Michael Kilbourne P. Geo. (APGO # 1591, OGQ (temporaire, #1971))

Énergie et Ressources naturelles
Direction de l'information géologique
3 avril 2018

GM 70536



1. TABLE OF CONTENTS

1.	Table of Contents	2
2.	Summary	4
3.	Introduction	8
	Issuer and terms of reference.....	8
4.	Property Description and Location	8
	Location.....	8
	Property Title and Tenure	9
5.	Accessibility, Climate, Local Resources, Infrastructure and Physiography	10
	Accessibility.....	10
	Climate and Physiography.....	11
	Local Resources and Infrastructure	11
6.	Exploration History	12
	Sources of information	12
7.	Geological Setting	17
	Regional Geology	17
	Local Geology	18
	Property Geology	20
	Regional Mineralization	21
8.	Deposit Types.....	23
	VMS.....	23
	Lode Gold	24
9.	Current Exploration.....	25
	Monster Lake Extension Zone Claims – Site Visit and Field mapping.....	25
10.	Results.....	27
11.	Interpretation and Conclusions	27
12.	Recommendations	28
13.	Statement of Qualifications	28



14.	References	30
	Assessment Reports.....	33
15.	Apendices.....	34
	Appendix 1: Blue Thunder Chinook Property Claims.....	35

Tables

Table 1: Summary of regional production, reserves, and resources. NO= Never Operated, CE= Currently exploring.	22
---	----

Figures

Figure 1 Blue Thunder’s Monster Lake Extension Zone Claims (in red) in relation to Monster Lake deposit	6
Figure 2: Location of the Chinook Property in the Province of Quebec. Modified from Ressources naturelles et Faune Quebec.....	9
Figure 3: Monster Lake Extension Zone claims (dashed lines represent access trails)	10
Figure 4: Monster Lake Extension Zone proximity to infrastructure.....	11
Figure 5: Monster Lake Extension Zone Claims - Historical Diamond Drilling.....	13
Figure 6: Map of the Abitibi Greenstone Belt. Modified from Thurston et al., 2008.....	18
Figure 7: Vertical magnetic gradient map on the Chinook Property.....	20
Figure 8: Regional mineralization in the NE extremity of the Abitibi Greenstone Belt.	23
Figure 9: Idealized illustration outlining features associated with VMS mineralization. Altered from Gibson et al., 2007.	24
Figure 10: Monster Lake Extension Zone Claims Traverses (dashed red lines) (Aug 30 to Sept 1, 2017) ..	26

Appendix 1: Blue Thunder Claims



2. SUMMARY

In August of 2017, Blue Thunder Mining Corporation (the “Company” or “Blue Thunder”) acquired 226 claims referred to as the “Chinook Property” approximately 49 km southwest of Chibougamau. The Chinook Property consolidates a large package of property in a geologically significant part of the Northeastern Abitibi Greenstone belt.

Initial work by Blue Thunder, immediately following the acquisition, consisted of a high-level desktop review of on-line government assessment files and available geological reports by geologists Edmond Thorose and Elaine Ellingham, with GIS assistance from Genevieve Gadoury. The goal was to provide sufficient geological information, maps, and a summary of historic work in order to facilitate an initial site visit by company geologists accompanied by a consulting geologist knowledgeable on the area.

Historic exploration work in the area was focussed on base metals and gold primarily targeting the regionally significant, roughly east-west trending Guercheville structure. Although several of these areas remain very interesting, an in-depth compilation of historic work including geology, drilling, geophysics and geochemistry will be required in order to determine the most effective exploration program going forward that leverages the knowledge gained from past work.

Of immediate interest, however, is the more recent discovery by TomaGold Corporation (“TomaGold”) and IAMGOLD Corporation (“IAMGOLD”) on the property, known as “Monster Lake” that lies immediately north of Blue Thunder’s eastern claims. TomaGold initially intersected significant high-grade gold in its 16 hole drill program in late 2012, with 5.7 meters of 237.6 grams per tonne (gpt) intersected. Similar to much of Blue Thunder’s claims, the Monster Lake project is underlain by Archean volcanic rocks of the Obatogamau Formation. However, rather than the prominent east-west structures that have historically been the primary targets on the Chinook Property, the Monster Lake project is traversed by an important NNE-SSW trending deformation corridor that hosts associated gold-bearing mineralized structures. TomaGold drilling has identified a four-kilometre long structural corridor, along which most of the known gold occurrences discovered to date on the property are associated, including the 325-Megane Zone. Based on the continued positive results of TomaGold, IAMGOLD entered into a 50% earn-in agreement on the property and have been aggressively investing in the project, with continued success. Continued drilling on the property has led to the recently released (March 28, 2018) initial resource estimate comprising **1,109,700 tonnes of inferred resources averaging 12.14 grams of gold per tonne for 433,300 ounces of contained gold**. The Blue Thunder team also reviewed available public disclosures on the nature of the mineralization and local geology of the Monster Lake deposits.



Blue Thunder's easternmost claims are contiguous to and lie along the strike projection of the Monster Lake SSW-trending, gold-bearing structures and thus Blue Thunder's block of 21 claims (the Monster Lake Extension Zone claims) are considered one of the priority areas for exploration. The initial high-level desktop review was to provide management and geologists with sufficient background information prior to a site visit. The field crew included a team geoscience consultants and assistants. The goal of the site visit was to carry out first-pass prospecting activities, sampling of any significant outcrops, collection of representative samples, assessment of logistics for follow up exploration programs in the search for gold and base metal mineralization.

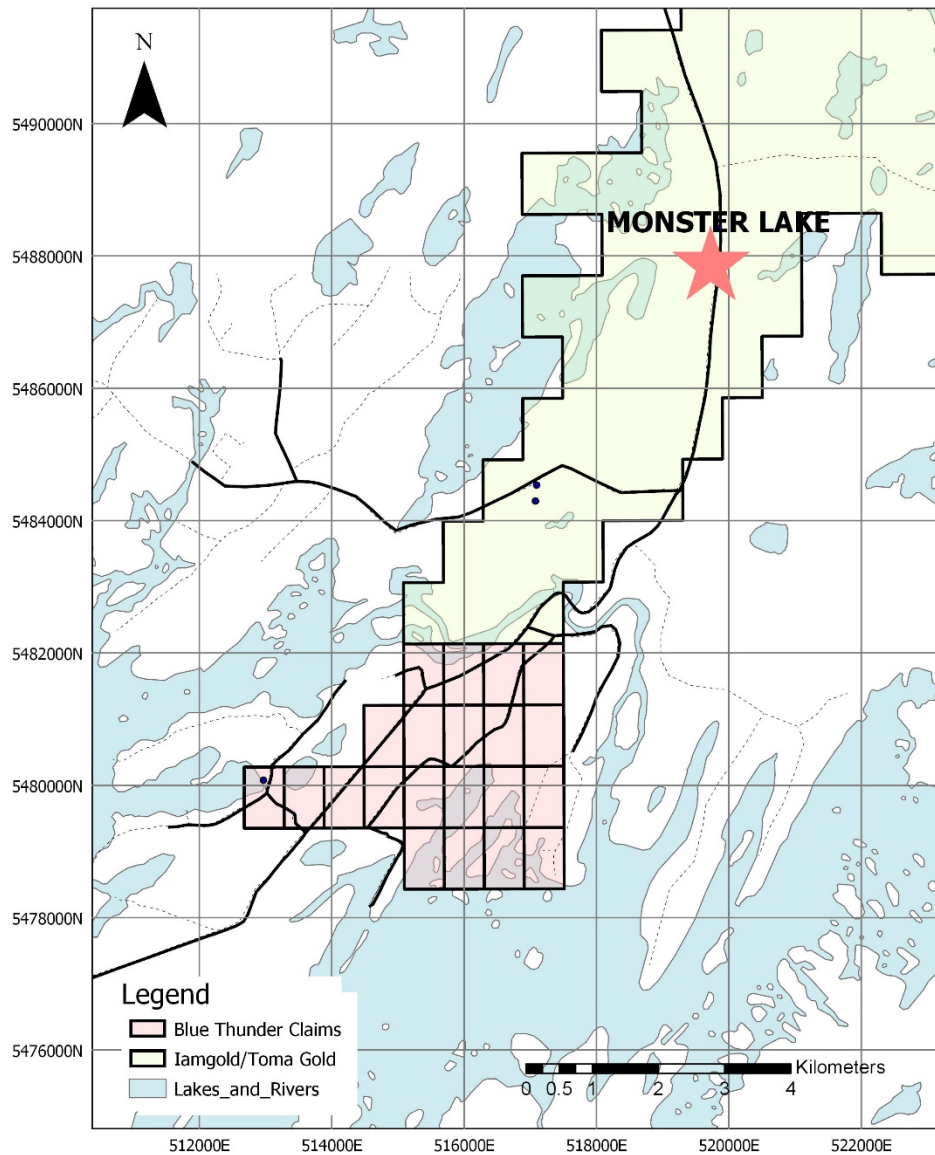


Figure 1 Blue Thunder’s Monster Lake Extension Zone Claims (in red) in relation to Monster Lake deposit

The site visit focussed on the eastern end of the Chinook Property, easily accessible by forestry road from Chibougamau, specifically 21 claims referred to herein as the “Monster Lake Extension Zone”. Two days of reconnaissance field work were carried out at the Monster Lake Extension Zone claims.

The visiting party included independent geological consultant, Mike Kilbourne, due to his in depth knowledge of the area and nearby deposits. He accompanied the following members of the Blue



Thunder team: Chad Williams, Pompeyo Gayardo, Elaine Ellingham, Ed Thorose, and Sam Pelaez.

Due to the large size of the party, a twin-engine turboprop aircraft was chartered for flight from Toronto to Chibougamau.

Two days were spent visiting accessible areas on the 21-claim block. Outcrop was for the most part restricted to the shores of Lac des Vents. Almost all driveable roads (using a 4-wheel drive) were accessed and investigated by the team. The high-level compilation had provided rough locations and details on historic drill hole locations, that enabled the geological team to identify and visit several of the areas of historic drilling. Unfortunately, there were no outcrops found at these locations and it was concluded that these holes were likely based entirely on geophysics targets. The geological team pursued available access points along the northern most parts of the 21-claims, as these would be closest to the projection of the Monster Lake zone. No outcrops were identified and additional access would require a boat and none was available.

CONCLUSIONS

1. The Monster Lake Extension Zone claims holds excellent potential for an extension to the Monster Lake deformation zone, due to proximity and overall geological setting. Similarly, the assessment filed historical airborne geophysics provides some support for this model. Unfortunately, access was somewhat limited and the area has little outcrop other than along the shores of Lac des Vents and a few poor exposures near the roads. Both detailed geophysics and geology are warranted as the project moves forward.
2. The historic compilation and initial review of easily-accessed assessment filings indicate a very positive geological and structural setting for economic mineral deposits. Although there is some drill testing, including some fences of holes to test a broader stratigraphic sequence, an in-depth compilation of assessment filings and all historic data is required in order to determine the most effective exploration programs going forward. There are many interesting areas that need to be prioritized with a full understanding of the extent and nature of historic work. Things that are being considered for future exploration are airborne geophysics and focused geological follow up, probably including trenching on areas where overburden is expected to be thin. Trenching has proven effective at Monster Lake. Ground geophysics on the 21-claim block might prove effective but a significant lake cover over parts might make high resolution airborne more cost effective. Also, historical geophysics appears to all have been oriented north-south, in order to test across the prominent east-west regional structures. Given the new knowledge of the Monster Lake gold deposits, considering an approximately east-west oriented geophysics survey is warranted, but only once a full understanding of historic data is completed.



3. It was anticipated that a field crew would be dispatched prior to winter to try to identify any conspicuous targets, and in particular those that were not accessible for the August visit.
4. An in-depth compilation of historic work is warranted to tap into the various surveys and drill results that are available and would form a very valuable base of knowledge, from which to build.

3. INTRODUCTION

Issuer and terms of reference

The Chinook Property is 49 km southwest of Chibougamau, Quebec and consists of 226 claims covering 12,000 hectares. This report pertains specifically to 21 claims covering 1200 hectares at the eastern end of the Chinook Property referred to herein as the “Monster Lake Extension Zone”. The Monster Lake Extension Zone was the focus of Blue Thunder’s August/September 2017 site visit and the focus of this report.

This report presents results from geological mapping and sampling conducted by Blue Thunder Mining Corporation (“Blue Thunder”) that took place August 30th to September 1st, 2017 at the Monster Lake Extension Zone. The main objective of the site visit was to carry out first-pass prospecting activities, including sampling of boulders and outcrops in the search for gold and base metal mineralization.

4. PROPERTY DESCRIPTION AND LOCATION

Location

The Monster Lake Extension Zone claims comprise 21 claims, covering 1,200 hectares, in the Chibougamau Mining district, Québec, Canada (Figure 2). The claims are centered on Lac des Vents at 49°29' N latitude and 74°52' W longitude.



Figure 2: Location of the Chinook Property in the Province of Quebec. Modified from Ressources naturelles et Faune Quebec.

Property Title and Tenure

There are a total of 21 contiguous CDC claims that make up the Monster Lake Extension Zone in NTS map sheets 32G07 (Figure 2). The Monster Lake Extension Zone is centered on 516,000E and 5,480,000N (NAD (North American Datum) 83, zone 18N). There are no Net Smelter Return royalties, environmental liabilities, underlying obligations, or encumbrances registered on the property.

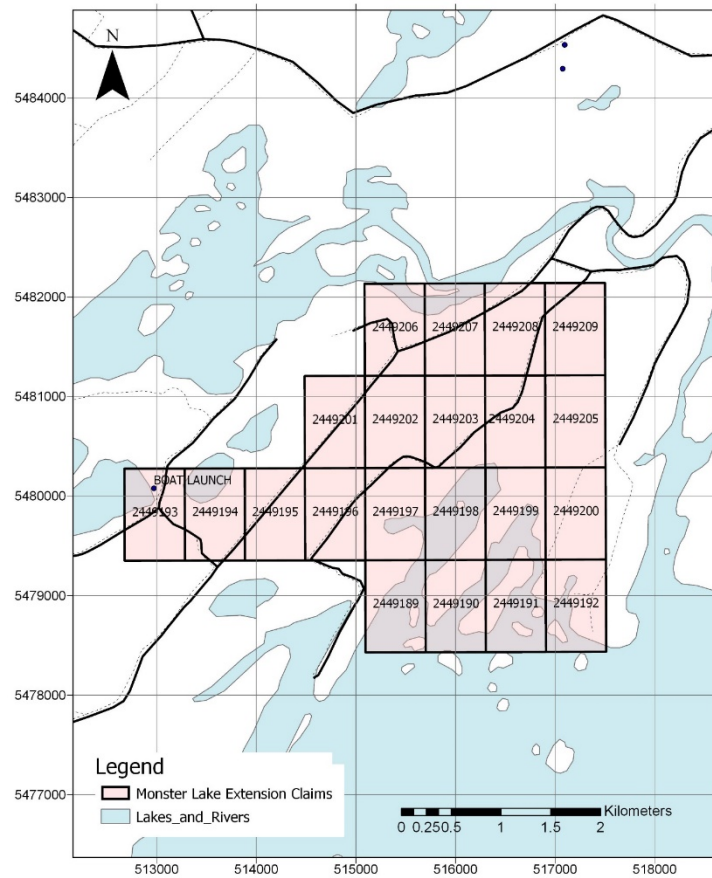


Figure 3: Monster Lake Extension Zone claims (dashed lines represent access trails)

5. ACCESSIBILITY, CLIMATE, LOCAL RESOURCES, INFRASTRUCTURE AND PHYSIOGRAPHY

Accessibility

The Monster Lake Extension Zone claims are located 27 km south of Chapais, Québec (pop. 1600) and 49 km Southwest of the Town of Chibougamau, Québec (pop. 7500). The property is easily accessible by road by driving 10 km East from Chapais, then turning South onto Route Forestière R1009 and driving 40 km. (Figure 4). The entire property can be easily accessed in the winter by snowmobile.

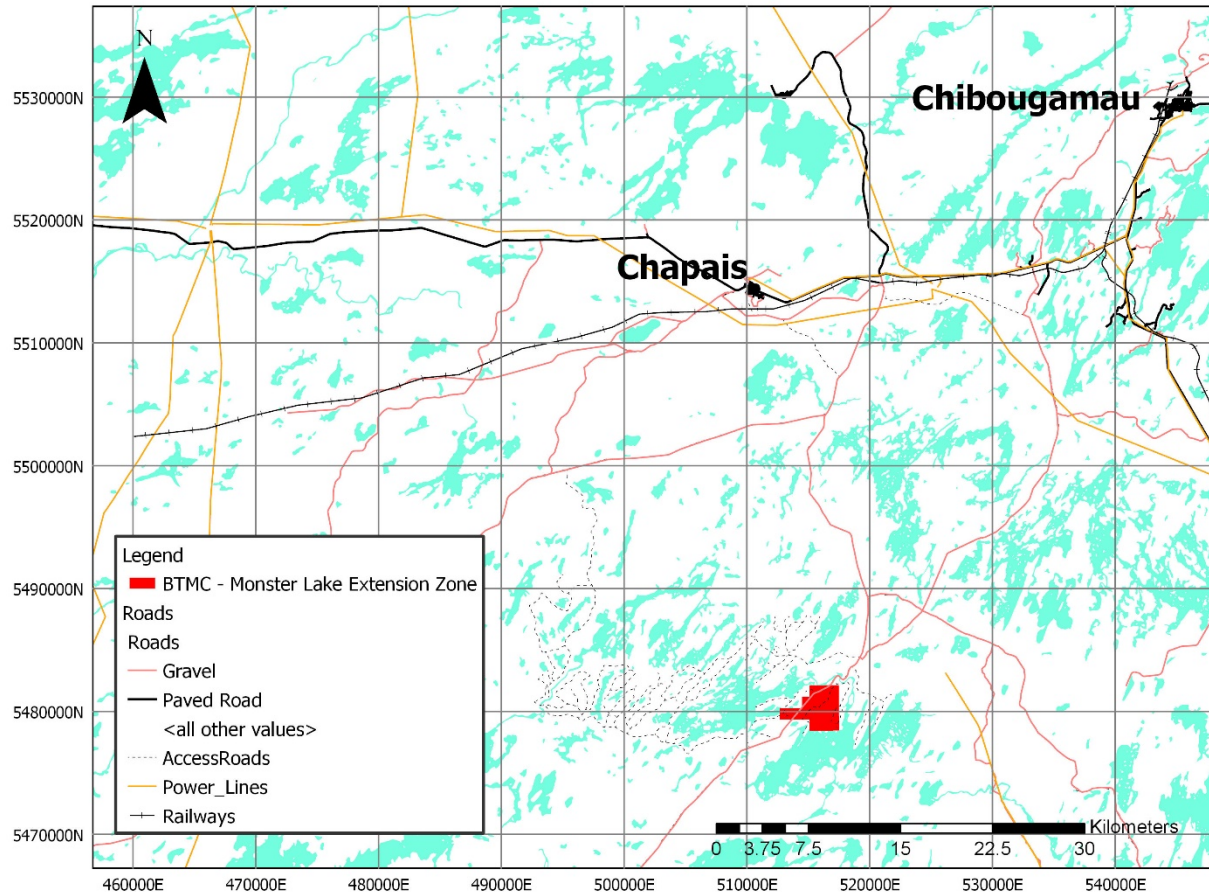


Figure 4: Monster Lake Extension Zone proximity to infrastructure.

Climate and Physiography

The Monster Lake Extension Zone claims lie within the subarctic climate zone; summers are hot (mean temperature >15 °C) and winters are cold (mean temperature <-10 °C) with consistent precipitation throughout the year. Vegetation is typical of the Canadian Boreal Forest. Conifers (tamarack, jack pine, lodgepole pine, black spruce, white spruce, and balsam fir) dominate the landscape while deciduous trees (aspen, white birch, and balsam poplar) make up a much smaller proportion. The property has a relatively consistent elevation ranging from 310 to 380 m above sea level. Most of the property is covered by water or swamp, resulting in sparse outcrop exposure. The property occurs to the east of Lac Des Vents, a large lake that extends approximately 13 km E-W and 8.5 km N-S.

Local Resources and Infrastructure

The property is a 1-hour drive from the major northern Québec town of Chibougamau (pop. 7500) and a 40-minute drive from the town Chapais (pop. 1600). The area has a rich mining history. Gold



was first discovered near Chibougamau in the early 1900s; however due to the remoteness of the area, the town was not established until 1952. Since then, there have been many producing mines and extensive mineral exploration. The area has an experienced mining and mineral exploration workforce. Chibougamau is home to Société du Plan Nord, an organization that supports northern development through subsidies and incentives. Val-d'Or, a major hub for mining services and supply, is located 400 km Southwest of Chibougamau via highway QC-113 N. Current nearby operating mines include: the BlackRock Metals vanadium-titanium-magnetite project and the Métanor Inc. gold project. Many locals are also employed by the extensive logging in the area. Chibougamau has an airport that is serviced by commercial and private aviation companies. Other infrastructure includes: railway, hydroelectric power, cellular service (no service on property), and a dormant mill.

6. EXPLORATION HISTORY

Sources of information

There have been numerous exploration programs on the Monster Lake Extension Zone claims since the 1950s. Ahead of the August 2017 site visit Blue Thunder Mining Corporation reviewed government and industry data from the Énergie et Ressources Naturelles Québec SIGEOM database. A summary is provided below of exploration completed on the Monster Lake Extension Zone claims.

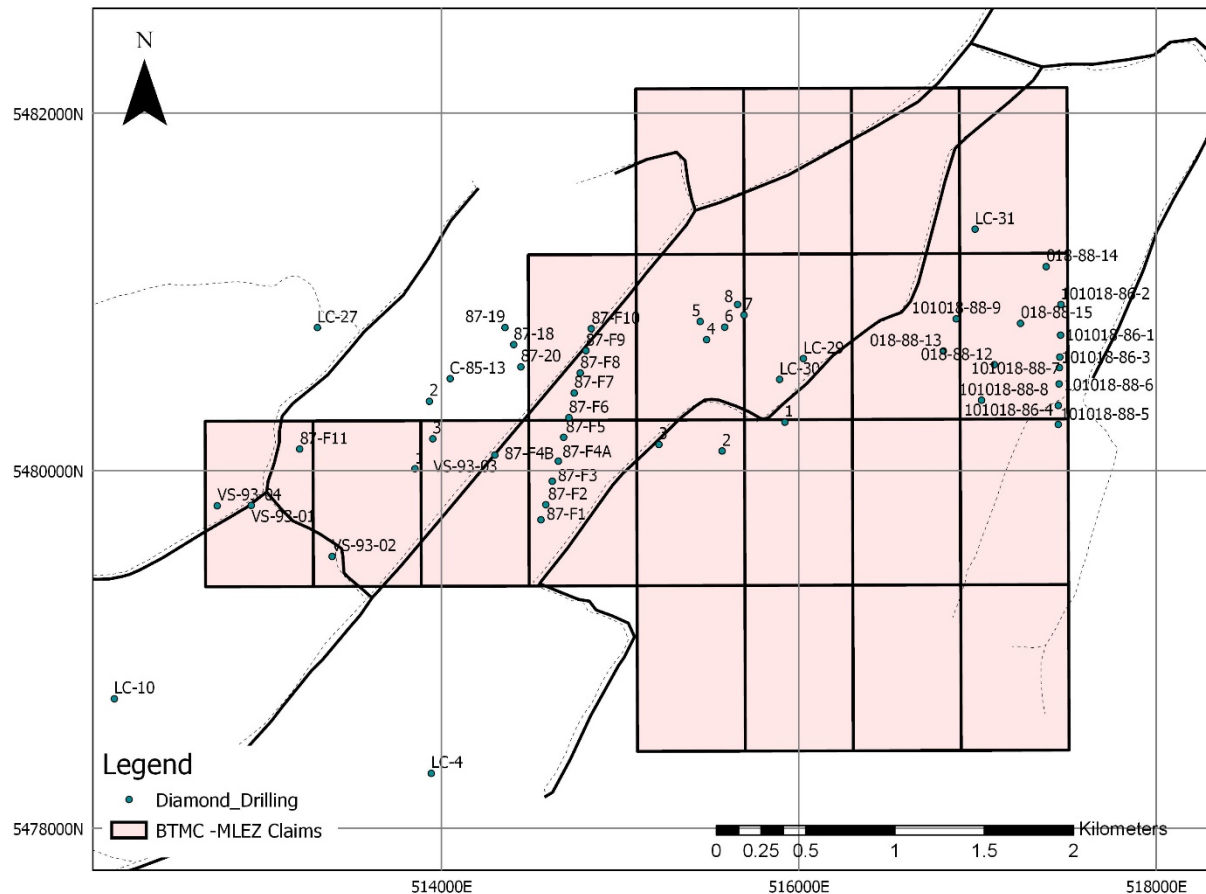


Figure 5: Monster Lake Extension Zone Claims - Historical Diamond Drilling

1952 Claims Bishop (GM 01948): Eight fairly shallow (less than ≈ 300 feet) diamond drill holes (numbered 1 to 8) were collared in the central portion of the Monster Lake Extension Zone claims targeting gold. A review of drill logs identified numerous intersections where quartz veins with sulphides were logged in addition to “highly altered” shear zones with quartz stringers/veins, including “blackish blue” quartz logged in Hole 4 in two separate intervals. It would appear that only nine samples were assayed from all eight holes, collected from quartz vein/shear zone intersections – no significant gold mineralization was reported from these assays.

All eight holes were oriented due south (Azimuth = 180°).

1955 Englewood Chibougamau Mines (GM 03160-B): Three diamond drill holes were collared at the western end of the Monster Lake Extension Zone claims (numbered 1 to 3). All three holes were oriented due south.

- In **Hole 1**, minor mineralization was intersected including trace gold, 1.2 % Zn and 0.32 % Cu over 1.5 m from unit logged as “lava, siliceous, tourmaline”. In addition, trace amounts

of gold and copper/zinc below detection were returned from ten other assays from sections described as quartz vein (including “blue quartz + tourmaline” from 199 to 201 feet) and shear zones with quartz veinlets.

- **Hole 2** was the deepest hole (EOH = 675 feet) and returned trace to 0.03 g/t Au gold from 14 assays in all. It should be noted that core recovery was poor from surface to 170 feet downhole within zones described as “graphitic material” in the drill logs. These zones at times contained sulphides.
- **Hole 3** (EOH = 629 feet) returned “trace” gold from nine assays.

1987 Golden Rock Inc. (GM 45432 and GM 43517): 16 diamond drill holes were collared on the East side of Lac Des Vents within the Monster Lake Extension Zone claims. Notable intersections include: 1.2 % Zn over 1.5 m, 1.03 ppm Au over 0.5 m, and 0.32 % Cu over 1.5 m. Also included was a VLF-EM survey, trenching, and 9 reverse circulation drill holes. Generally, the approach was to target conductors identified from the geophysics as well as following up on soil (till) anomalies.

The drilling included a fence of 10 drill holes, holes 87-F1 to 87-F10, extending for ≈1.1km in a NNE-SSW direction (holes spaced ≈125m apart). The objective was to identify the source of basal till anomalies R-52, R-53 and R-54 which returned anomalous gold values (490 ppb, 1029 ppb, 1080 ppb and 2080 ppb Au). Hole 87-F3 returned 0.17 g/t Au over 3.7m from a silicified zone with 1% pyrite. The authors of the report conclude that this may have been the possible source of the till anomalies.

The northernmost three holes drilled along the 10-hole fence (i.e. 87-F8, 87-F9 and 87-F10), which extend for some 250m intersected a 200m wide graphitic zone, with massive pyrite lenses (less than 2m thick) with best intercept returned 3.7m @ 0.14 g/t Au. Blue Thunders Mining Corp’s review of drill logs revealed that smoky to black quartz veining was reported from these three holes (87-F8, 87-F9 and 87-F10) as well as from Holes 87-18 and 87-19, which occur ≈**450m** to the west.

All of the holes drilled by Golden Rock Inc. were oriented generally to the south.

In reviewing the drilling logs the following observations were made:

- Hole 87-F1 and 87-F2 intersected occasional quartz-carbonate tourmaline veinlets with trace amounts of pyrrhotite and pyrite and up to 30% carbonate alteration. These zones returned sub-economic gold grades (up to 0.05 g/t Au)
- Hole 87-F3 intersected a 3.7m zone of silicification with 1% pyrite starting at 136.2m which returned 0.290 g/t Au over 1.0m.
- Hole 87-F4B intersected a shear zone from 50.0m to 60.1m with quartz-carbonate veins containing trace pyrite and chalcopyrite – gold grades sub-economic up to 0.05 g/t Au

- Hole 87-F5: Intersected shear zone from 24.6m to 58.9m with up to 10% quartz-carbonate veinlets with trace pyrite and zones of silicification but only one sample collected which ran 0.005 g/t Au
- Hole 87-6: From 9.6m to 14.6m intersected silicified zone with trace pyrite and fuchsite with best value 0.04 g/t Au as well as narrow shear zone at 87.3m downhole which returned 0.04 g/t Au
- Hole 87-F7: No assay results were reported and presumably no samples were assayed despite trace pyrite veinlets reported throughout hole
- Hole 87-F8: 1.5m interval at 31.1m downhole depth with 5% quartz-carbonate vein with trace pyrite which ran 0.08 g/t Au. Also, note **1.2m interval with black quartz vein** at 58m which ran 0.006 g/t Au and further down from 74.5m to 76.7m encounter 1% quartz veinlets + pyrrhotite which ran 0.17 g/t Au
- Hole 87-F9: Occasional narrow bands of **smoky quartz** ± carbonate veinlets reported intermittently throughout the hole (EOH = 118m) as well as narrow quartz breccia zones. Most of the hole was assayed and returned sub-economic gold values - peak value of 0.15 g/t Au over 1m was returned from 15m interval logged as graphitic shear zone, with quartz veinlets and massive pyrite up to 10%
- Hole 87-F10: Encountered sheared graphitic bands with quartz ± carbonate veinlets and pyrite up to 60%. Encountered 20cm band of **smoky-quartz vein** material at 80m which ran 0.05 g/t Au
- Hole 87-18: Drilled on Az=150deg. Essentially graphitic argillite with massive sulphide (pyrite) seams + occasional quartz veinlets; including specific mention of narrow (sub meter) **smoky quartz veinlets** with pyrite at 70m and 80m down hole. Assays for gold all sub-economic
- Hole 87-19: **Smoky quartz veins** observed throughout hole but grades all sub-economic

1988 Esso Resources Canada (GM 48402): 28 diamond drill holes were collared of which three, LC29, LC30 and LC31, were drilled on the Monster Lake Extension Zone claims. All three holes are oriented SSE and appear to have been targeting two ENE-WSW trending linear magnetic highs. In general, no significant mineralization was intersected within these three holes although minor amounts of quartz-carbonate veining were logged throughout.

- LC29: Hole was drilled bearing south (AZ=162°). Peak value of 160 ppb Au returned from 135.3m to 136.3m from pervasively silicified zone within a plagioclase/quartz porphyry unit. Otherwise, no significant mineralization was encountered.
- LC30: Hole was drilled bearing south (AZ=162°). Anomalous gold values (up to 160ppb) were returned from 19.60m to 26.50m within silicified and carbonatized quartz feldspar porphyry unit hosting two generations of quartz-carbonate veins (with up to 30% tourmaline). From 63m to 74m encountered brecciated wallrock infilled with quartz

carbonate veinlets with trace sulphides. Within this zone, 50cm quartz vein returned 140 ppb Au.

- LC31: Hole was drilled bearing south ($Az=152^\circ$). A short interval from 12m to 18m returned anomalous values up to 290 ppb Au within a gabbro unit with minor shearing and quartz-carbonate veinlets. The remainder of the hole (EOH = 153m) was disappointing, with majority of assays below detection (<1 ppb Au), despite presence of minor shearing and quartz-carbonate veinlets/veins throughout. Blue quartz veins and blebs were logged at the end of the hole (from 149m to 153m) which returned 1 ppb to 2ppb Au.

1988 SOQUEM (GM 49907 and GM 48135): 10 diamond drill holes were collared on the Chinook Property of which four occur within the Monster Lake Extension Zone; holes 018-88-12, 018-88-13, 018-88-14 and 018-88-15. The most notable intersection was 0.3 ppm Au over 1 meter in 018-88-14.

Results from GM 49907

- 88-12: $Az=170$ deg: At the eastern end of the block- these holes were targeting ENE-WSW magnetic highs and encountered trace to 7% magnetite within mafic units (basalts and gabbros) in addition to trace to amounts of pyrite. Gold assays were disappointing
- 88-13: $Az=180$. This hole was targeting coincident magnetic /VLF anomalies. Abundant magnetite and pyrite was intersected but gold values were disappointing.
- 88-14: $Az=180$ degrees. Encountered anomalous gold values (150ppb to 300ppb) in metasediments. From 40m to 60m, intersected intense shear zone with sericite and chlorite alteration as well as isolated smokey quartz veinlet with trace sulphides. Within this interval had two assays running 150ppb and 300 ppb Au
- 88-15: $Az=150$. Mostly in basalts with all gold results below detection (<5 ppb)

Results from GM 48135:

Nine diamond drill holes were drilled by SOQUEM in 1987, all within the eastern end of Blue Thunder Mining Corp's Monster Lake Extension Zone. The holes were numbered 101018-1 through 9. In addition, SOQUEM completed 46 kilometers of line cutting and carried out both ground magnetic and EM surveys.

Holes 101018-1 to 101018-7 were drilled on a north-south fence extending for ≈ 600 meters at the eastern end of the Monster Lake Extension Zone. Holes 101018-8 and 9 were situated ≈ 500 meters to the west of this fence. All nine holes were drilled bearing south (azimuth = 180°) and no significant gold assays were reported although anomalous zinc values were returned from Hole 7 (1940 ppm Zn to 2550 ppm Zn). In general, minor amounts (less than 5%) of quartz-carbonate veinlets/veins was observed in all nine holes as well as smokey quartz veins (less than 2%). All nine holes intersected various mafic lithologies (basalts, gabbros and pyroxenite) with trace levels of disseminated sulphides (pyrite, pyrrhotite and sphalerite in hole 7) as well as magnetite.



1992-1993 Westminer Canada Ltd (GM 51990): Four core holes (Holes VS-93-01 to VS-93-04) were drilled on the western end of the Monster Lake Extension Zone claims. The holes were drilled to test various ground magnetic and IP anomalies. All four holes were oriented due south (azimuth = 170°). The best results were returned from Hole VS-93-01, which intersected 0.6m @ 1.1 g/t Au and Hole VS-93-04, which returned 1m @ 0.59 g/t Au. Both intercepts occurred within a sheared “mafic differentiated sill”, associated with quartz-tourmaline pyrite veins (0.5m to 1m thick).

7. GEOLOGICAL SETTING

Regional Geology

The Monster Lake Extension Zone claims are located at the Eastern extremity of the Abitibi Greenstone Belt in the southeast part of the Superior province (Figure 6). The Abitibi Greenstone Belt is composed mostly of metavolcanics, granitoids, mafic intrusions, and metasedimentary rocks. The belt is interpreted to have formed autochthonously from a combination of arc and plume magmatism and comprises eleven episodes (Ayer et al., 2002b; Thurston et al., 2008; Ayer et al., 2010b). The first seven episodes represent periods of semi-continuous volcanism from 2750 to 2695 Ma. The four youngest episodes called: Caopatina (<2700 Ma), Opemisca (<2692 Ma), Porcupine (2690-2682 Ma) and Timiskaming (2677-2670 Ma), are dominantly sedimentary successor basins that were deposited on the volcanic rocks at the same time as plutons were being emplaced (Ayer et al., 2002b; Thurston et al., 2008; Ayer et al., 2010b).

The structure of the Abitibi consists of regional isoclinal folds and faulting. The isoclinal folds are generally E-W trending, but regional N-S isoclinal folds occur in the Timmins and Chibougamau areas (Goodwin, 1997). The folding formed steeply dipping stratigraphy and is a result of the 2695-2700 Ma Kenoran Orogeny (Corfu et al., 1989). Regional faults generally trend E-W with associated splays trending obliquely. Most of the Abitibi mineralization is structurally controlled. VMS (Volcanic massive sulfide) deposits have a strong association with syn-volcanic faulting, while lode gold deposits are associated with post-volcanic tectonic deformation.



that is structurally complex, and metamorphosed to greenschist facies (locally up to amphibolite facies).

The Chapais-Chibougamau geology is comprised of the Archean Roy and Opémisca groups. The 3 to 4 km thick Roy group extends E-W for over 100 km. It is composed of basalt and basaltic andesite rocks that are overlain by volcanoclastic and sedimentary rocks (Allard and Gobeil, 1984). The Roy Group is subdivided into three cycles, each representing a unique paleogeographic phase. The Roy Group is also intruded by various types (i.e. granitoids, mafic, ultramafic) of synvolcanic plutons. The Roy Group is unconformably overlain by the Opémisca Group, which is comprised of sedimentary rocks. The contact between the two groups is faulted (Leclerc et al., 2012).

The structure of the Chapais-Chibougamau area is interpreted to be a large synclinorium of volcanic and sedimentary rocks bound by granitic plutons (Chown et al., 1991). The stratigraphy has been tilted steeply due to regional E-W and N-S trending folds (Daigneault, 1984). The area has endured five major deformational events referred to as D0, D1, D2, D3, and D4. D0 represents synvolcanic and synmagmatic structures (Dimroth and Allard, 1984; Daigneault et al. 1990). D1 is defined by N-S (axial plane) isoclinal folds. D2 is defining the E-W trending axial planes of isoclinal folds with associated axial planar cleavage. D3 consists of NE trending dextral shear zones. The last deformational event, D4, is a NNE-SSW cleavage from the Mesoproterozoic Grenville deformation (Dimroth and Allard, 1984; Daigneault et al. 1990). The most important structure, in terms of mineralization, is the E-W trending Opawica-Guercheville Fault. It is interpreted to be part of the D3 deformation event and is host to multiple Au deposits (Joe Mann Mine and Philibert Deposit; Dion and Guha, 1994).

Regional metamorphism is dominated by greenschist facies. Common orogenic metamorphic mineral assemblages include: chlorite, epidote, quartz, albite, actinolite, muscovite, and chloritoid. Metamorphic grade increases to amphibolite facies in rocks that are proximal to plutons and to the Grenville front (Daigneault et al. 1990).

Magnetic geophysical surveys have been successful for mapping major structures and stratigraphy on the Monster Lake Extension Zone claims. Magnetic data weakly outlines the regional, locally Au mineralized, Opawica-Guercheville fault (Figure 6). The contact between the Obatogamau Formation and the des Vents member is also highlighted by the magnetic data. The contact is prospective in terms of VMS-style mineralization.

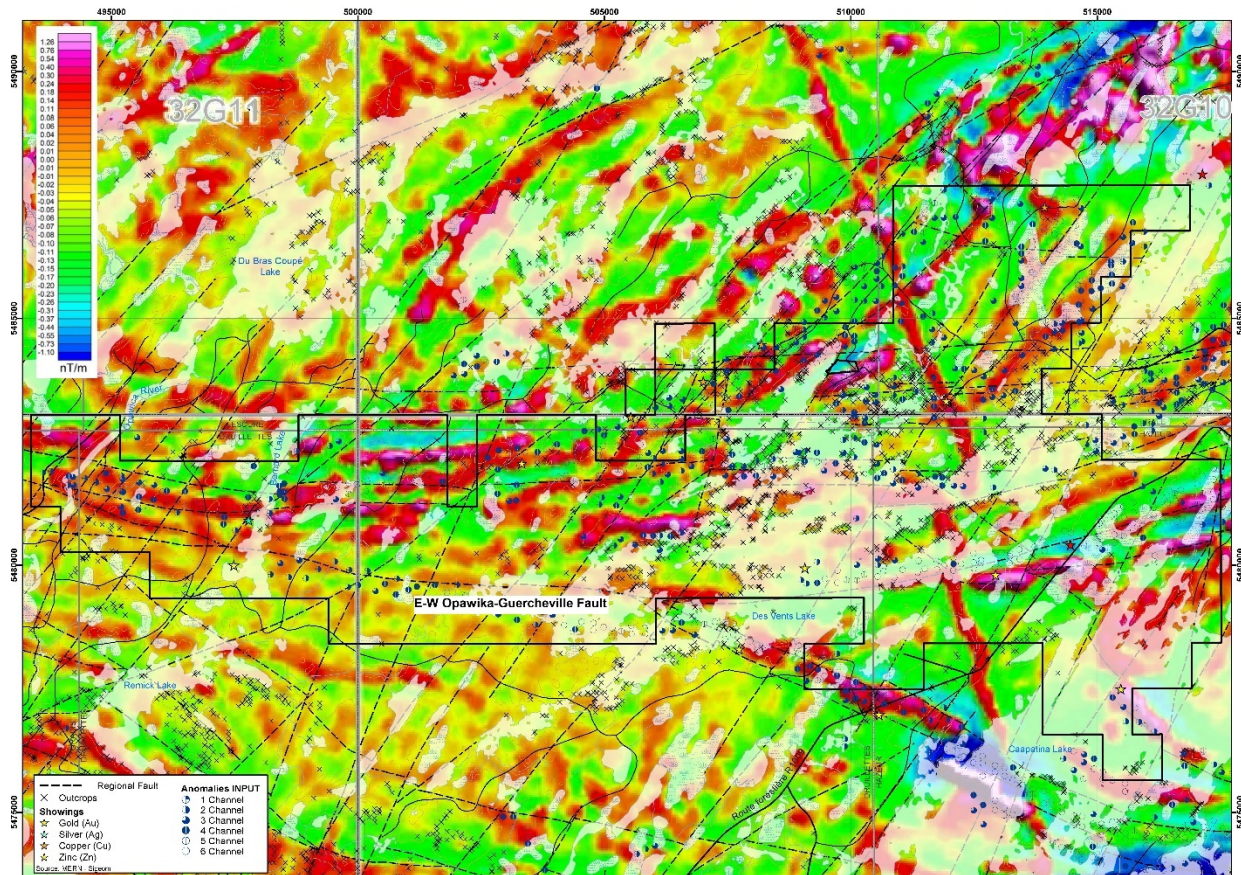


Figure 7: Vertical magnetic gradient map on the Chinook Property

Property Geology

The Chinook Property geology is dominated by the Obatogamau Formation of the Roy Group. The Obatogamau is approximately 3000 m thick and represents the start of a volcanic cycle (Leclerc et al., 2012). It consists of massive, pillowed, and plagioclase phyric tholeiitic basalts. The plagioclase phenocrysts are up to 8 cm in size and constitute up to 50% of the rock (Tait et al., 1987).

The des Vents member occurs in the North-central part of the Chinook Property. It was previously thought to be the start of the Obatogamau volcanic cycle; however, it has an age of 2805 to 2757 ma (Mortensen, 1993) suggesting it belongs to the first volcanic cycle called the Chrissie Formation. The des Vents member has a complex stratigraphy composed of felsic units interstratified with gabbro sills and basalt flows (Mueller and Chown, 1989). The felsic units are composed of massive to brecciated dacitic flows, reworked pyroclastic debris, pelagic sediments, and volcanoclastic sediments (turbidity currents; Chown et al., 1991).

The Southern part of the Chinook Property contains rocks of the Caopatina Formation (Opémisca group). It consists of a 1 to 2 km thick sequence of conglomerate, sandstone, argillite, and ash flow



tuffs Sedimentary features indicate the deposition occurred in deep water, below storm wave base (Chown et al., 1991).

The Chinook Property contains the peripheries of multiple plutons. The Pluton de Drouet, in the Western extent of the Chinook property, consists of tonalite. The Pluton d'Hazeur in the SE corner is also composed of tonalite. The Complexe d'Eau Jaune occurs in the North-central part of the Chinook Property and consists mostly of diorite.

Regional Mineralization

The Chapais-Chibougamau area of the Abitibi hosts many ore deposits and mineralized zones (Figure 7). Most of the mineralization can be categorized as either shear hosted Au or VMS. Notable mines in the area include: Mine Lac Bachelor, Mine du Lac Shortt, and Joe Mann Mine. These and other mineralized zones are outline in Table 2.

Mine Lac Bachelor is a presently producing Au mine located 76 km West of the Monster Lake Extension Zone claims. It has NI 43-101 compliant resources of 841,591 t at 7.79 ppm Au and NI 43-101 compliant reserves of 843,072 t at 7.1 ppm Au (Darling and Lafontaine, 2011) Mineralization is associated with brittle-ductile shears, at the contact of the Obatogamau Formation and a syenitic complex, near the Western extremity of the Opawica-Guercheville Fault. Mine Lac Bachelor is interpreted as a late-Archean intrusion-related Au deposit (Fayol and Jébrak, 2017).

Mine du Lac Shortt is a past producing Au mine located 57 km W-NW of the Monster Lake Extension Zone claims. The mine produced 2,700,000 t and currently has reserves (non-NI 43-101 compliant) of 525,352 t at 4.6 ppm Au. The deposit is hosted in the Opawica-Guercheville Fault.

Joe Mann Mine is a past producing Au, Ag, and Cu mine located 23 km East of the Monster Lake Extension Zone claims. The mine produced 4,289,221 t and currently has reserves (non-NI 43-101 compliant) of 1,525,838 t at 11 ppm Au, 5.49 ppm Ag, and 0.28% Cu. The deposit occurs where the Opawica-Guercheville Fault is cut by NE to NNE shear zones (Dion and Guha, 1994).

On March 28, 2018, IAMGOLD Corporation announced a NI-43 101 compliant maiden Inferred Resource for the Monster Lake joint venture project, which occurs 10 km north east of the Monster Lake Extension Zone claims. The resource estimate comprises 1,109,700 tonnes of inferred resources at 12.1 grams of gold per tonne for 433,300 ounces of contained gold (Iamgold Corporation News Release, March 28, 2018).



Table 1: Summary of regional production, reserves, and resources. NO= Never Operated, CE= Currently exploring.

Name	Easting	Northing	Status	Past production (t)	Reserves (t)	Au (ppm)	Ag (ppm)	Cu (ppm)	Zn (ppm)	Resources (t)	Au (ppm)	Ag (ppm)	Cu (ppm)	NI 43-101
Mine Coniagas	415404	5483078	Closed	718,465	77,176		98.44		22,000					No
Mine Lac Bachelor	417050	5483525	Open	807,013	843,072	7.1				841,591	7.79			Yes
Mine du Lac Shortt	438107	5496266	Closed	2,700,000	525,352	4.6								No
Fenton	472747	5485663	CE							426,173	4.66			No
Chesbar	507005	5483728	NO							14,000			18,000	No
Philibert	528449	5480834	NO		1,393,092	5.32								No
Zone Chevrier Sud	534078	5496140	NO							8,500,000	2			No
Zone Chevrier	535180	5497553	NO							4,600,000	1.99			Yes
Joe Mann Mine	540793	5481839	Closed	4,289,221	1,525,838	11	5.49	2800						No
Monster Lake	519833	5488420	Open							1,109,700	12.1			Yes

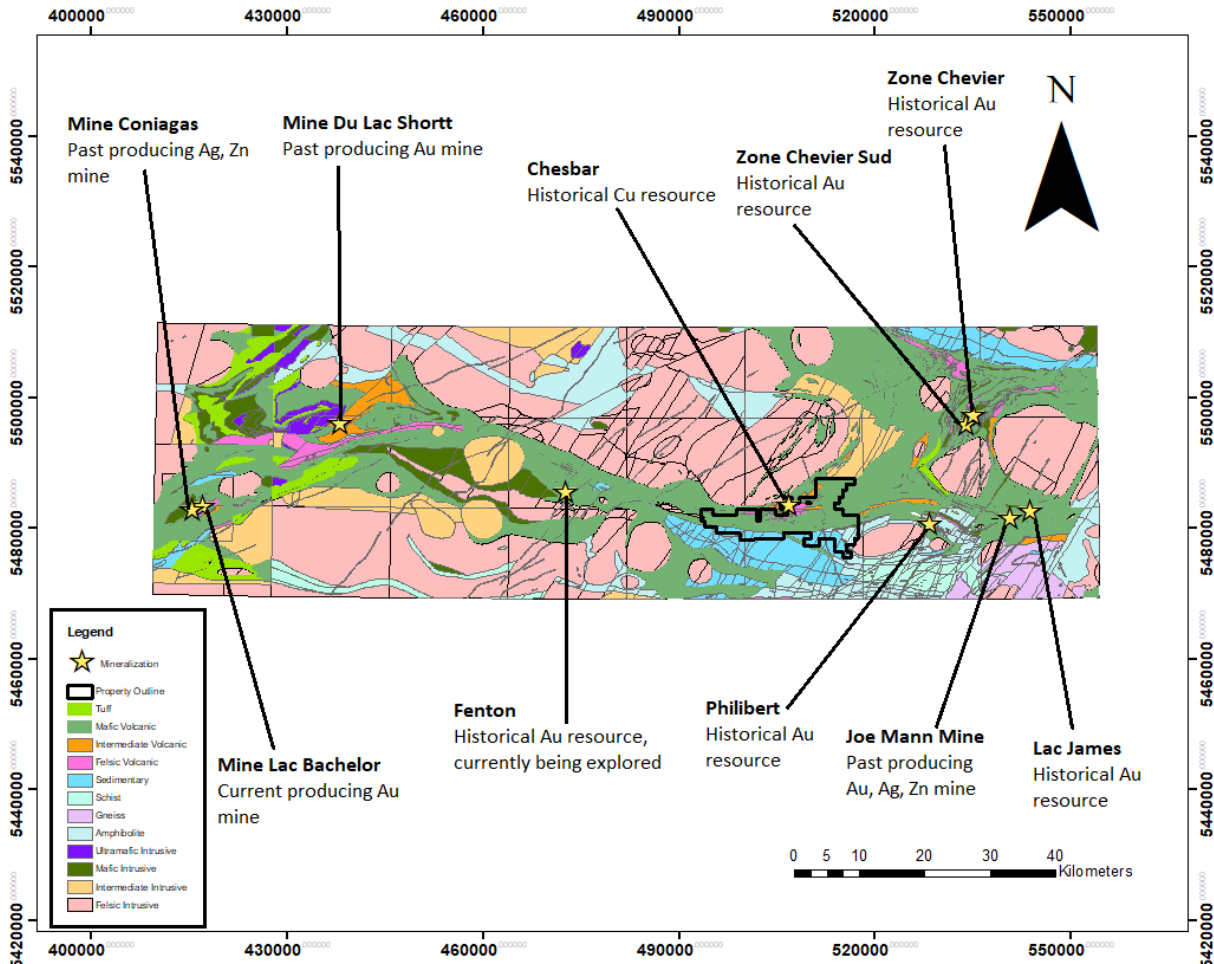


Figure 8: Regional mineralization in the NE extremity of the Abitibi Greenstone Belt.

8. DEPOSIT TYPES

VMS

The Abitibi is host to many world class VMS deposits. A VMS deposit is essentially a lens of semi-massive to massive sulfides (typically Fe, Cu, Zn, Pb +/- Au, Ag) formed on or below the seafloor due to a volcanic source driving metal-bearing hydrothermal fluids. Gibson et al (2007) developed a criterion consisting of 6 elements that are essential for forming VMS deposits (Figure 9). These include: 1) a heat source, such as a synvolcanic hypabyssal intrusion; 2) a high temperature reaction zone to allow leaching of metals from the rocks; 3) deep synvolcanic faults that act as pathways for metal-bearing hydrothermal fluids; 4) footwall and hanging wall alteration zone; 5) successive hydrothermal events to refine metal content; and, 6) exhalites that represent a hydrothermal contribution to background sedimentation.

VMS deposits of the Chapais-Chibougamau area have an association with NNW to NNE synvolcanic faults (D0) in the volcanic rocks of the Roy Group (Leclerc et al., 2012). The deposits commonly occur at the contact between the tholeiitic to transitional mafic volcanic rocks and the calc-alkaline felsic rocks (Lafrance et al., 2006). This occurs because VMS formation requires a break in volcanism; sufficient time is required for the black smokers to deposit the metal bearing fluids on the seafloor. Evidence of a break in volcanism can be seen by chemical and clastic sedimentary rocks capping a volcanic cycle (Leclerc et al., 2012).

At the property scale, the most important rocks are the des Vents Member (Chrissie Formation) and the Obatogamau Formation. The des Vents member represents the end of the first volcanic cycle in the Roy Group while the Obatogamau represents the start of the second volcanic cycle of the Roy Group (Leclerc et al., 2012). The contact between these two units represents a break in volcanism. The break is host to the Chesbar Cu deposit that occurs just off the Chinook Property (14,000 t of 1.88 % Cu).

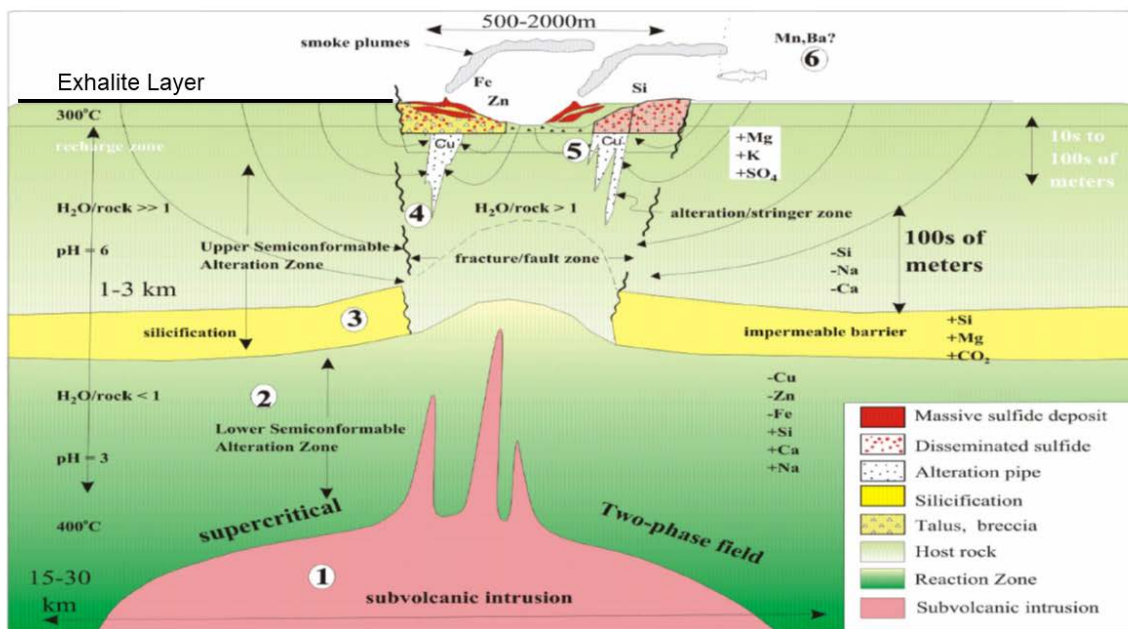


Figure 9: Idealized illustration outlining features associated with VMS mineralization. Altered from Gibson et al., 2007.

Lode Gold

Lode Au deposits typically occur in highly altered (i.e. quartz, albite, carbonate, tourmaline, sericite, chlorite) and deformed zones of Archean greenstone belts. They form due to the precipitation of gold from hydrothermal fluids circulating through deformed rocks. Abitibi lode Au deposits predominantly occur in reverse or reverse-oblique, high-angle (50° to 80°) shear zones that are proximal to major regional E-W trending faults (Sibson and Poulsen, 1988). The deposits have endured brittle-ductile deformation under greenschist to amphibolite metamorphic



facies. Quartz and gold bearing shear veins are dominantly hosted in tholeiitic mafic-ultramafic rocks (Sibson et al., 1988).

Shear hosted Au deposits in the Chapais-Chibougamau area are associated with broad E-W reverse shear zones and the associated, conjugate NW-SE and NE-SE shear zones (Dube and Guha, 1989) The most prospective shear zones are characterized as having a strong Fe-carbonate-epidote-magnetite-fuchsite inner zone that grades out to a chlorite-calcite-magnetite outer zone (Guha et al. 1988). Typically, the Au mineralization is associated with pyrite, but chalcopyrite, magnetite, and tourmaline are also considered prospective (Leclerc et al., 2012).

At the property scale, the most significant structure is the E-W trending regional Opawica-Guercheville Fault. The shear and its associated conjugate shears are host to multiple Au resources and occurrences described at section 7.4 (Joe Mann Mine and Philibert Deposit; Dion and Guha, 1994). The Opawica-Guercheville Fault is interpreted to be part of the D3 deformation event; it consists of a sub vertical mylonitic fabric with a strong stretching lineation. (Daigneault et al, 1990).

9. CURRENT EXPLORATION

Monster Lake Extension Zone Claims – Site Visit and Field mapping

Over a three-day period from August 30th to September 1st a team geoscience consultants and field crew travelled to the property and conducted reconnaissance geology and prospecting, that included investigating all means of access to the various parts of the claim block. Areas of focus were based on an examination of structural features interpreted from historic airborne geophysics as well as areas of historic drill testing.

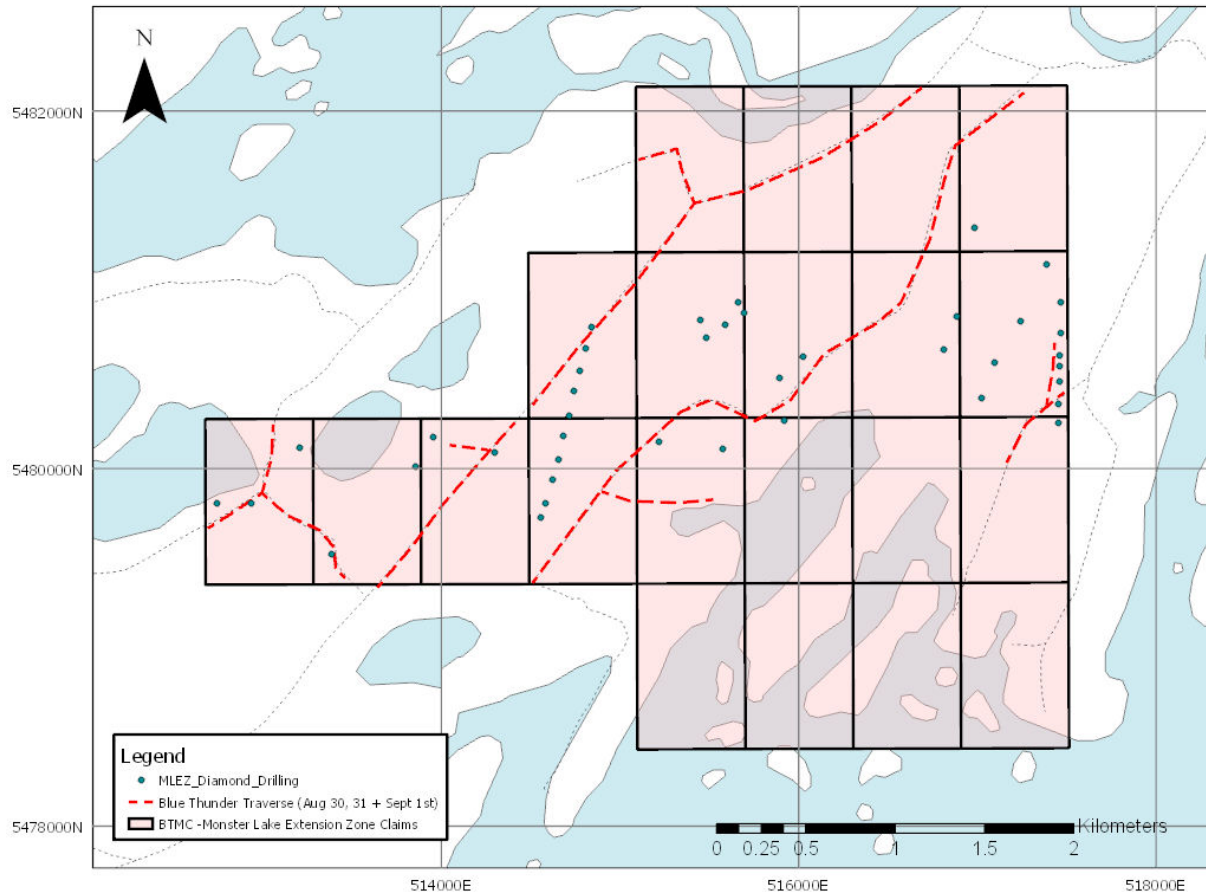


Figure 10: Monster Lake Extension Zone Claims Traverses (dashed red lines) (Aug 30 to Sept 1, 2017)

All driveable roads were accessed and short traverses, particularly towards any water bodies that had possibilities for outcrop exposures. A number of outcrops were examined on the shores of Lac des Vents. All were mafic volcanics with minor or moderate deformation. Some of the less deformed outcrops showed remnant elongated pillow structures. Representative samples were taken but did not warrant analysis. The lakes on the eastern most part of the claims did not have outcrop exposures where visited. The crew did visit over half of the locations of historic drill holes, however there were no associated outcrops and it was concluded that they had been located to test geophysics anomalies, also based on the review of historic drill logs.

The area along the northern boundary of the 21-claim block has excellent road access but corresponds to an area where the river mouth leads into Lac des Vents and a boat would be required to access the shoreline in this area. It is set as a priority for next summer's program.



10. RESULTS

This program provided a good base for understanding the basic geology and regional setting. On-site, although few outcrops were found, other than the lakeshore exposures on Lac des Vents, it was important for determining future exploration programs. For example, there are a number of cottages established along the road-accessible shores of Lac des Vents and future programs will need to be sensitive to this.

11. INTERPRETATION AND CONCLUSIONS

Based on the initial high-level review of historic work and the subsequent initial field work conducted August 30 – Sept 1, 2017, the following was concluded:

1. The Monster Lake Extension Zone claims holds excellent potential for an extension to the Monster Lake deformation zone, due to proximity and overall geological setting. Similarly, the assessment filed historical airborne geophysics provides some support for this model. Unfortunately, access was somewhat limited and the area has little outcrop other than along the shores of Lac des Vents and a few poor exposures near the roads. Both detailed geophysics is likely the best tool to form the base of the next phase of exploration as the project moves forward, together with detailed mapping and prospecting along the northern lake shores within the 21-claim block.
2. The historic compilation and initial review of easily-accessed assessment filings indicate a very positive geological and structural setting for economic mineral deposits. Although there is some drill testing, including some fences of holes to test a broader stratigraphic sequence, an in-depth compilation of assessment filings and all historic data is required in order to determine the most effective exploration programs going forward. For example, it became apparent that almost all historic drilling was shallow. There are many interesting areas that need to be prioritized with a full understanding of the extent and nature of historic work. Things that are being considered for future exploration are airborne geophysics and focused geological follow up, probably including trenching on areas where overburden is expected to be thin. Trenching has proven effective at Monster Lake. Ground geophysics on the 21-claim block might prove effective but a significant lake cover over parts might make high resolution airborne more cost effective. Also, historical geophysics appears to all have been oriented north-south, in order to test across the prominent east-west regional structures. Given the new knowledge of the Monster Lake gold deposits, considering an approximately east-west oriented geophysics survey is warranted, but only once a full understanding of historic data is completed.



3. The limited field work did confirm the assessment-filed geological maps based on the available outcrops. It was anticipated that a field crew would be dispatched prior to winter to try to identify any conspicuous targets on the full Chinook property, and in particular those that were not accessible for the August visit.
4. An in-depth compilation of historic work is warranted to tap into the various surveys and drill results that are available and would form a very valuable base of knowledge, from which to implement the next phases of exploration on the 21-claim block.

12. RECOMMENDATIONS

Based on the initial high-level review and subsequent field program, it was determined to:

1. Deploy a geological field crew to visit historic showings and conduct prospecting in areas with historic anomalous gold or copper in drilling or outcrop.
2. Conduct an in-depth compilation and analysis of all available assessment filings and determine the most effective exploration recommended to move forward on both gold and base metal targets.
3. Evaluate historic geophysics and systems that would most effectively detect Monster Lake-type structures and mineralization on the Monster Lake Extension Zone claims that hosts considerable potential as it is contiguous to and along strike of the gold-bearing Monster Lake structures.

13. STATEMENT OF QUALIFICATIONS

I, Elaine Ellingham, P. Geo (Ontario) with business and residential address of 33 Harbour Square, Suite 3410, Toronto, Ontario M5J 2G2 do hereby certify that:

1. I am a member in good standing of the APGO with membership number 0883.
2. I am a graduate of the University of Toronto with a Bachelor of Science degree in Geology (B.Sc.1980) and a Master of Science degree in Geology (M.Sc. 1985).
3. I certify that by reason of my education and past relevant work experience, I fulfill the requirements to be a "Qualified Person" for the purpose of this report.
4. I've worked as an exploration geologist for major and junior mining companies.
5. I am president of Ellingham Consulting Ltd.
6. I have participated and overseen the creation of this report, which is based on written communications from Edmond Thorose, President of Blue Thunder who accompanied the team during the August-September 2017 field work.
7. I consent to the filing of this Report.



Dated in Toronto, Ontario, this 10th day of April 12, 2018

A handwritten signature in blue and green ink, reading "E. Ellingham", is written over a horizontal line.

Elaine Ellingham

CERTIFICATE OF QUALIFIED PERSON

MICHAEL W. KILBOURNE, P.GEO.

I, Michael W. Kilbourne, P.Geo., residing at 405-25 Oxley Street, Toronto, Ontario, M5V 2J5 do hereby certify that:

1. I am an independent geological consultant contracted by Blue Thunder Mining Corp.;
2. This certificate applies to the Report titled "Exploration Report at the Monster Lake Extension Zone Claims, 26 km South of Chapais, Quebec, Canada, Latitude 49° 29' N, Longitude 74° 52' W, NTS Map sheets 32G/10, 32G/06, and 32G/07, for Blue Thunder Mining Corporation, co-authored by Elaine Ellingham P.Geo., Ed Thorose, BSc., and Michael Kilbourne, P.Geo. dated April 2018.
3. I am a graduate of the University of Western Ontario with a B.Sc (HONS) in Geological Sciences (1985). I have worked as a geologist for a total of 30 years since obtaining my Honours B.Sc. degree. I am a geological consultant currently licensed by l'Ordre des Géologues du Québec (OGQ, Temporary License No. 1971), and the Association of Professional Geoscientists of Ontario (APGO, License No. 1591);
4. I have been involved in the property visit and verification of the Lac Des Vents Project;
5. As of the date of this certificate, to the best of my knowledge, information and belief, the Report contains all scientific and technical information that is required to be disclosed to make the Report not misleading;
6. As at the date of this certificate, I do not hold any shares, options or warrants of Blue Thunder Mining Corp.

Signed: April 11, 2018



[Michael Kilbourne, OGQ [(temporaire) #1971] APGO [#1591]

Michael Kilbourne, P.Geo.

I, Edmond Thorose, B.Sc., do hereby certify that:

1. I am currently consulting for Blue Thunder residing at 38 Ironshield Crescent, Markham, ON
2. I graduated with a B.Sc. in Earth Sciences from University of Toronto, Ontario in 1996.
3. I have worked in geosciences since 1996 in Ontario, Yukon Territory, Indonesia and the Democratic Republic of Congo.
4. I consent to the filing of the Report.

DATED at Toronto, Toronto this 4th day of April 12, 2018.

Respectfully submitted,



Ed Thorose, B.Sc.,



Allard, G. O., Gobeil, A. 1984. General geology of the Chibougamau region. In Chibougamau Stratigraphy and Mineralization, Canadian Institute of Mining and Metallurgy, Special Volume 34, p. 5-19.

Ayer, J.A., Ketchum, J.W.F., and Trowell, N., 2002b. New geochronological and Nd isotopic results from the Abitibi greenstone belt, with emphasis on timing and implications of Late Archean sedimentation and volcanism. Ontario Geological Survey Open File Report 6100: 5-1–5-16.

Ayer, J. A., Goutier, J., Thurston, P., Dubé, B., Kamber, B., 2010b. Abitibi–Wawa Subprovince tectonic and metallogenic evolution. Yilgarn–Superior Workshop Abstracts, Fifth International Archean Symposium, Geological Survey of Western Australia: 51–56.

Chown, E. H., Daigmeault, R., Mueller, W. 1991. Geological setting of the eastern extremity of the Abitibi Belt. In Litho-tectonic framework and associated mineralization of the eastern extremity of the Abitibi Greenstone Belt, Quebec (Field Trip 3), Geological Survey of Canada Open File 2158, p. 1-32.

Corfu, F., Krough, T. E., Kwok, Y. Y., Jensen, L. S. 1989. U-Pb zircon geochronology in the southwestern Abitibi greenstone belt, Superior Province. Canadian Journal of Earth Sciences, 26, p. 1747-1763.

Daigmeault, R., and Allard, G.O., 1984, Évolution tectonique d’une portion du sillon de roches vertes de Chibougamau: Canadian Institute of Mining and Metallurgy Special Volume 34, p. 212–228.

Daigmeault, R., St-Julien, P., and Allard, G.O., 1990, Tectonic evolution of the northeast portion of the Archean Abitibi greenstone belt, Chibougamau area, Quebec: Canadian Journal of Earth Sciences, v. 27, p. 1714–1736.

Darling, G., Lafontaine, M. 2011, Technical report on the Bachelor Lake Gold Project Prepared for Metanor Resources. Stantec Consulting Ltd. And GENIVAR Inc., 201 p. (http://www.metanor.ca/wp-content/uploads/2016/03/resources_update_MTO_05Aout2016Final.pdf).

Dimroth, E., Rocheleau, M., Mueller, W. 1984. Paleogeography, Isostasy and crustal evolution of the Archean Abitibi belt: a comparison between the Rouyn-Noranda and Chibougamau-Chapais areas. In Chibougamau Stratigraphy and Mineralization, Canadian Institute of Mining and Metallurgy, Special Volume 34, p. 73-91.

Dion, C., and Guha, J., 1994, Caractérisation de la minéralisation aurifère du secteur oriental de la bande volcano-sédimentaire Caopatine-Desmaraville: Ministère des Ressources naturelles du Québec Report ET91-10, 153 p.



Dubé, B., and Guha, J., 1989, Étude métallogénique (aurifère) du filoncouche de Bourbeau, région de Chibougamau: synthèse finale: Ministère de l'Énergie et des Ressources du Québec Report MM87-03, 156 p.

Ministère des Ressources naturelles et de la Faune du Québec. Carte Générale Québec.
<http://mern.gouv.qc.ca/territoire/portrait/portrait-quebec.jsp>

Fayol, N., and Jébrak, M., 2017, Archean Sanukitoid Gold Porphyry Deposits: A New Understanding and Genetic Model from the Lac Bachelor Gold Deposit, Abitibi, Canada. *Economic Geology*, v. 112, pp. 1913-1936.

Gibson, H. L., Allen, R. L., Riverin, G., Lane, T. E. 2007. The VMS Model: Advances and Application to Exploration Targeting. In "Proceedings of Exploration 07: Fifth Decennial International Conference on Mineral Exploration", *Ore Deposits and Exploration Technology*, p. 713-730.

Goodwin, A. M. 1977. Archean volcanism in Superior Province Canadian Shield. In *Volcanic regimes in Canada*. Geological Association of Canada, Special Paper 16, p. 205-241.

Guha, J., Dubé, B., Pilote, P., Chown, E.H., Archambault, G., and Bouchard, G., 1988, Gold mineralization patterns in relation to the lithologic and tectonic evolution of the Chibougamau mining district, Quebec, Canada: *Mineralium Deposita*, v. 23, p. 293–298.

Lafrance, B., Brisson, T., McNichols, D., and Lambert, G., 2006, Rapport sur le programme de forage 2005, Projet Lemoine. Woodruff Capital Management Inc: Ministère des Ressources naturelles et de la Faune du Québec Report GM-62564, 334 p.

Leclerc, F., Harris, L. B., Bédard, J. H., van Breemen, O., Goulet, N. 2012. Structural and Stratigraphic Controls on Magmatic, Volcanogenic, and Shear Zone-Hosted Mineralization in the Chapais-Chibougamau Mining Camp, Northeastern Abitibi, Canada. *Economic Geology*, v. 107, p. 963-989.

Mortensen, J.K., 1993, U-Pb geochronology of the eastern Abitibi subprovince. Part 1: Chibougamau-Matagami-Joutel region: *Canadian Journal of Earth Sciences*, v. 30, p. 11–28.

Mueller, W., Chown, E. H. 1989. The development of an Archean mafic-felsic volcanic centre: Lac des Vents complex, northern Abitibi belt, Québec. IAVCEI, Santa Fe, *Continental Magmatism, Abstracts*, p. 198.

Shimamura, K., Williams, S. P., and Buller, G. 2008. Ganfeld User Guide: A Map-Based Field Data Capture System for Geoscientists. Geological Survey of Canada Open File 5912, p. 1-90.

Sibson, R. H., Robert, F. K., Poulsen, H. 1988. High-angle reverse faults, fluid-pressure cycling, and mesothermal gold-quartz deposits. *Geology*, v. 16, p. 551-555.



Thurston, P. C., Ayer, J.A., Goutier, J., and Hamilton, M.A., 2008. Depositional Gaps in Abitibi Greenstone Belt Stratigraphy: A Key to Exploration for Syngenetic Mineralization. *Economic Geology* 103.6: 1097-1134.

Tait, L., Pilote, P. and Chown, E. H. 1987. Géologie de la région du Lac à l'Eau Jaune, rapport intérimaire, Ministère de l'Énergie et des Ressources, Québec, MB87-24, 114 p.

Assessment Reports

GM 01948 (Claims Bishop, 1952)

GM 03160-B (Englewood Chibougamau Mines, 1955)

GM 03160-B (Englewood Chibougamau Mines, 1955)

GM 04400-B (Chesbar Chibougamau Mines Ltd., 1956)

GM 05154-A (Newmont, 1957)

GM 21558 (Ministere des Richesses Naturelles Québec, 1967)

GM 22586 (Serem Ltee., 1968)

GM 28744 (Les Mines Chasm, 1972)

GM 33463 (Cominco Ltd., 1977)

GM 33499 (Falconbridge Nickel Mines Limited, 1977)

GM 34348 (Cominco Ltd., 1978)

GM 41395 (Minerais Barexor Inc., 1978)

GM 42336 (Les Mines Camchib Inc., 1984)

GM 46303 (Esso Resources Canada, 1986)

GM 43517 (Golden Rock Inc., 1987)

GM 45432 (Golden Rock Inc., 1987)

GM 48055 (Esso Resources Canada, 1987)

GM 44071 (Esso Resources Canada, 1987)

GM 46429 (Fairlady Energy Inc., 1987)



GM 48402 (Esso Resources Canada, 1988)

GM 49907 (SOQUEM, 1988)

GM 48135 (SOQUEM, 1988)

GM 49983 (SOQUEM, 1989)

GM 49844 (Homestake Mining Canada Limited, 1989)

GM 50852 (SOQUEM, 1991)

GM 51990 (Westminer Canada Ltd., 1993)

GM 53912 (SOQUEM, 1995)

GM 54583 (SOQUEM, 1996)

GM 62564 (Ressources Cogitore Inc., 2005)

GM 66513 (Ressources Cartier Inc., 2011)

GM 68057 (Laurier Gold, 2013)

15. APENDICES



Appendix 1: Blue Thunder Chinook Property Claims

Monster Lake Extension Zone claims are denoted with an '**' next to the Title Number

NTS Sheet	Type of Title	Title No	Expiry Date	Area (Ha)	Excess Work	Required Work	Required Fees	Titleholder(s) (Name, Number and Percentage)
32G07	CDC	2435589	January 6, 2018	55.95	\$ -	\$ 780.00	\$ 128.18	Blue Thunder Mining Corporation (97012) 100 % (responsible)
32G10	CDC	2435590	January 6, 2018	55.9	\$ -	\$ 780.00	\$ 128.18	Blue Thunder Mining Corporation (97012) 100 % (responsible)
32G10	CDC	2435591	January 6, 2018	54.79	\$ -	\$ 780.00	\$ 128.18	Blue Thunder Mining Corporation (97012) 100 % (responsible)
32G10	CDC	2435592	January 6, 2018	55.89	\$ -	\$ 780.00	\$ 128.18	Blue Thunder Mining Corporation (97012) 100 % (responsible)
32G10	CDC	2435593	January 6, 2018	55.41	\$ -	\$ 780.00	\$ 128.18	Blue Thunder Mining Corporation (97012) 100 % (responsible)
32G07	CDC	2435700	January 10, 2018	55.92	\$ -	\$ 780.00	\$ 128.18	Blue Thunder Mining Corporation (97012) 100 % (responsible)
32G07	CDC	2435701	January 10, 2018	55.91	\$ -	\$ 780.00	\$ 128.18	Blue Thunder Mining Corporation (97012) 100 % (responsible)
32G07	CDC	2435702	January 10, 2018	55.91	\$ -	\$ 780.00	\$ 128.18	Blue Thunder Mining Corporation (97012) 100 % (responsible)
32G07	CDC	2435703	January 10, 2018	55.91	\$ -	\$ 780.00	\$ 128.18	Blue Thunder Mining Corporation (97012) 100 % (responsible)
32G10	CDC	2435704	January 10, 2018	55.9	\$ -	\$ 780.00	\$ 128.18	Blue Thunder Mining Corporation (97012) 100 % (responsible)
32G10	CDC	2435705	January 10, 2018	55.89	\$ -	\$ 780.00	\$ 128.18	Blue Thunder Mining Corporation (97012) 100 % (responsible)
32G07	CDC	2436269	January 26, 2018	55.92	\$ -	\$ 780.00	\$ 128.18	Blue Thunder Mining Corporation (97012) 100 % (responsible)
32G07	CDC	2436270	January 26, 2018	55.92	\$ -	\$ 780.00	\$ 128.18	Blue Thunder Mining Corporation (97012) 100 % (responsible)



32G07	CDC	2436271	January 26, 2018	55.91	\$ -	\$ 780.00	\$ 128.18	Blue Thunder Mining Corporation (97012) 100 % (responsible)
32G07	CDC	2436272	January 26, 2018	55.91	\$ -	\$ 780.00	\$ 128.18	Blue Thunder Mining Corporation (97012) 100 % (responsible)
32G07	CDC	2438673	March 28, 2018	55.94	\$ -	\$ 780.00	\$ 64.09	Blue Thunder Mining Corporation (97012) 100 % (responsible)
32G07	CDC	2438674	March 28, 2018	55.94	\$ -	\$ 780.00	\$ 64.09	Blue Thunder Mining Corporation (97012) 100 % (responsible)
32G07	CDC	2438675	March 28, 2018	55.94	\$ -	\$ 780.00	\$ 64.09	Blue Thunder Mining Corporation (97012) 100 % (responsible)
32G07	CDC	2438676	March 28, 2018	55.92	\$ -	\$ 780.00	\$ 64.09	Blue Thunder Mining Corporation (97012) 100 % (responsible)
32G07	CDC	2438677	March 28, 2018	55.92	\$ -	\$ 780.00	\$ 64.09	Blue Thunder Mining Corporation (97012) 100 % (responsible)
32G07	CDC	2438678	March 28, 2018	55.92	\$ -	\$ 780.00	\$ 64.09	Blue Thunder Mining Corporation (97012) 100 % (responsible)
32G07	CDC	2441791	April 17, 2018	55.96	\$ -	\$ 780.00	\$ 64.09	Blue Thunder Mining Corporation (97012) 100 % (responsible)
32G07	CDC	2441792	April 17, 2018	55.96	\$ -	\$ 780.00	\$ 64.09	Blue Thunder Mining Corporation (97012) 100 % (responsible)
32G07	CDC	2441793	April 17, 2018	55.95	\$ -	\$ 780.00	\$ 64.09	Blue Thunder Mining Corporation (97012) 100 % (responsible)
32G07	CDC	2441794	April 17, 2018	55.95	\$ -	\$ 780.00	\$ 64.09	Blue Thunder Mining Corporation (97012) 100 % (responsible)
32G10	CDC	2443987	May 3, 2018	55.9	\$ -	\$ 780.00	\$ 64.09	Blue Thunder Mining Corporation (97012) 100 % (responsible)
32G10	CDC	2443988	May 3, 2018	55.89	\$ -	\$ 780.00	\$ 64.09	Blue Thunder Mining Corporation (97012) 100 % (responsible)
32G10	CDC	2443989	May 3, 2018	55.89	\$ -	\$ 780.00	\$ 64.09	Blue Thunder Mining Corporation (97012) 100 % (responsible)



32G10	CDC	2443990	May 3, 2018	55.88	\$ -	\$ 780.00	\$ 64.09	Blue Thunder Mining Corporation (97012) 100 % (responsible)
32G10	CDC	2443991	May 3, 2018	55.88	\$ -	\$ 780.00	\$ 64.09	Blue Thunder Mining Corporation (97012) 100 % (responsible)
32G10	CDC	2443992	May 3, 2018	55.88	\$ -	\$ 780.00	\$ 64.09	Blue Thunder Mining Corporation (97012) 100 % (responsible)
32G10	CDC	2443993	May 3, 2018	55.88	\$ -	\$ 780.00	\$ 64.09	Blue Thunder Mining Corporation (97012) 100 % (responsible)
32G10	CDC	2443994	May 3, 2018	55.88	\$ -	\$ 780.00	\$ 64.09	Blue Thunder Mining Corporation (97012) 100 % (responsible)
32G10	CDC	2443995	May 3, 2018	55.88	\$ -	\$ 780.00	\$ 64.09	Blue Thunder Mining Corporation (97012) 100 % (responsible)
32G10	CDC	2443996	May 3, 2018	55.87	\$ -	\$ 780.00	\$ 64.09	Blue Thunder Mining Corporation (97012) 100 % (responsible)
32G10	CDC	2443997	May 3, 2018	55.87	\$ -	\$ 780.00	\$ 64.09	Blue Thunder Mining Corporation (97012) 100 % (responsible)
32G10	CDC	2443998	May 3, 2018	55.87	\$ -	\$ 780.00	\$ 64.09	Blue Thunder Mining Corporation (97012) 100 % (responsible)
32G10	CDC	2443999	May 3, 2018	55.86	\$ -	\$ 780.00	\$ 64.09	Blue Thunder Mining Corporation (97012) 100 % (responsible)
32G10	CDC	2444000	May 3, 2018	55.86	\$ -	\$ 780.00	\$ 64.09	Blue Thunder Mining Corporation (97012) 100 % (responsible)
32G10	CDC	2444001	May 3, 2018	55.86	\$ -	\$ 780.00	\$ 64.09	Blue Thunder Mining Corporation (97012) 100 % (responsible)
32G10	CDC	2444002	May 3, 2018	55.86	\$ -	\$ 780.00	\$ 64.09	Blue Thunder Mining Corporation (97012) 100 % (responsible)
32G10	CDC	2444003	May 3, 2018	55.86	\$ -	\$ 780.00	\$ 64.09	Blue Thunder Mining Corporation (97012) 100 % (responsible)
32G07	CDC	2444051	May 4, 2018	55.94	\$ -	\$ 780.00	\$ 64.09	Blue Thunder Mining Corporation (97012) 100 % (responsible)



32G07	CDC	2444052	May 4, 2018	55.94	\$ -	\$ 780.00	\$ 64.09	Blue Thunder Mining Corporation (97012) 100 % (responsible)
32G07	CDC	2444053	May 4, 2018	55.94	\$ -	\$ 780.00	\$ 64.09	Blue Thunder Mining Corporation (97012) 100 % (responsible)
32G07	CDC	2444420	May 9, 2018	55.94	\$ -	\$ 780.00	\$ 64.09	Blue Thunder Mining Corporation (97012) 100 % (responsible)
32G07	CDC	2444421	May 9, 2018	55.94	\$ -	\$ 780.00	\$ 64.09	Blue Thunder Mining Corporation (97012) 100 % (responsible)
32G07	CDC	2444422	May 9, 2018	55.94	\$ -	\$ 780.00	\$ 64.09	Blue Thunder Mining Corporation (97012) 100 % (responsible)
32G07	CDC	2444423	May 9, 2018	55.94	\$ -	\$ 780.00	\$ 64.09	Blue Thunder Mining Corporation (97012) 100 % (responsible)
32G07	CDC	2444424	May 9, 2018	55.93	\$ -	\$ 780.00	\$ 64.09	Blue Thunder Mining Corporation (97012) 100 % (responsible)
32G07	CDC	2444425	May 9, 2018	55.93	\$ -	\$ 780.00	\$ 64.09	Blue Thunder Mining Corporation (97012) 100 % (responsible)
32G07	CDC	2444426	May 9, 2018	55.92	\$ -	\$ 780.00	\$ 64.09	Blue Thunder Mining Corporation (97012) 100 % (responsible)
32G07	CDC	2444427	May 9, 2018	55.92	\$ -	\$ 780.00	\$ 64.09	Blue Thunder Mining Corporation (97012) 100 % (responsible)
32G07	CDC	2444428	May 9, 2018	55.91	\$ -	\$ 780.00	\$ 64.09	Blue Thunder Mining Corporation (97012) 100 % (responsible)
32G07	CDC	2444584	May 15, 2018	55.94	\$ -	\$ 780.00	\$ 64.09	Blue Thunder Mining Corporation (97012) 100 % (responsible)
32G07	CDC	2444585	May 15, 2018	55.94	\$ -	\$ 780.00	\$ 64.09	Blue Thunder Mining Corporation (97012) 100 % (responsible)
32G07	CDC	2444586	May 15, 2018	55.94	\$ -	\$ 780.00	\$ 64.09	Blue Thunder Mining Corporation (97012) 100 % (responsible)
32G07	CDC	2444587	May 15, 2018	55.93	\$ -	\$ 780.00	\$ 64.09	Blue Thunder Mining Corporation (97012) 100 % (responsible)



32G07	CDC	2444588	May 15, 2018	55.93	\$ -	\$ 780.00	\$ 64.09	Blue Thunder Mining Corporation (97012) 100 % (responsible)
32G07	CDC	2444589	May 15, 2018	55.93	\$ -	\$ 780.00	\$ 64.09	Blue Thunder Mining Corporation (97012) 100 % (responsible)
32G07	CDC	2444590	May 15, 2018	55.93	\$ -	\$ 780.00	\$ 64.09	Blue Thunder Mining Corporation (97012) 100 % (responsible)
32G07	CDC	2449187	June 15, 2018	55.94	\$ -	\$ 780.00	\$ 64.09	Blue Thunder Mining Corporation (97012) 100 % (responsible)
32G07	CDC	2449188	June 15, 2018	55.94	\$ -	\$ 780.00	\$ 64.09	Blue Thunder Mining Corporation (97012) 100 % (responsible)
32G07	CDC	2449189*	June 15, 2018	55.94	\$ -	\$ 780.00	\$ 64.09	Blue Thunder Mining Corporation (97012) 100 % (responsible)
32G07	CDC	2449190*	June 15, 2018	55.94	\$ -	\$ 780.00	\$ 64.09	Blue Thunder Mining Corporation (97012) 100 % (responsible)
32G07	CDC	2449191*	June 15, 2018	55.94	\$ -	\$ 780.00	\$ 64.09	Blue Thunder Mining Corporation (97012) 100 % (responsible)
32G07	CDC	2449192*	June 15, 2018	55.94	\$ -	\$ 780.00	\$ 64.09	Blue Thunder Mining Corporation (97012) 100 % (responsible)
32G07	CDC	2449193*	June 15, 2018	55.94	\$ -	\$ 780.00	\$ 64.09	Blue Thunder Mining Corporation (97012) 100 % (responsible)
32G07	CDC	2449194*	June 15, 2018	55.94	\$ -	\$ 780.00	\$ 64.09	Blue Thunder Mining Corporation (97012) 100 % (responsible)
32G07	CDC	2449195*	June 15, 2018	55.94	\$ -	\$ 780.00	\$ 64.09	Blue Thunder Mining Corporation (97012) 100 % (responsible)
32G07	CDC	2449196*	June 15, 2018	55.94	\$ -	\$ 780.00	\$ 64.09	Blue Thunder Mining Corporation (97012) 100 % (responsible)
32G07	CDC	2449197*	June 15, 2018	55.94	\$ -	\$ 780.00	\$ 64.09	Blue Thunder Mining Corporation (97012) 100 % (responsible)
32G07	CDC	2449198*	June 15, 2018	55.94	\$ -	\$ 780.00	\$ 64.09	Blue Thunder Mining Corporation (97012) 100 % (responsible)



32G07	CDC	2449199*	June 15, 2018	55.94	\$ -	\$ 780.00	\$ 64.09	Blue Thunder Mining Corporation (97012) 100 % (responsible)
32G07	CDC	2449200*	June 15, 2018	55.94	\$ -	\$ 780.00	\$ 64.09	Blue Thunder Mining Corporation (97012) 100 % (responsible)
32G07	CDC	2449201*	June 15, 2018	55.93	\$ -	\$ 780.00	\$ 64.09	Blue Thunder Mining Corporation (97012) 100 % (responsible)
32G07	CDC	2449202*	June 15, 2018	55.93	\$ -	\$ 780.00	\$ 64.09	Blue Thunder Mining Corporation (97012) 100 % (responsible)
32G07	CDC	2449203*	June 15, 2018	55.93	\$ -	\$ 780.00	\$ 64.09	Blue Thunder Mining Corporation (97012) 100 % (responsible)
32G07	CDC	2449204*	June 15, 2018	55.93	\$ -	\$ 780.00	\$ 64.09	Blue Thunder Mining Corporation (97012) 100 % (responsible)
32G07	CDC	2449205*	June 15, 2018	55.93	\$ -	\$ 780.00	\$ 64.09	Blue Thunder Mining Corporation (97012) 100 % (responsible)
32G07	CDC	2449206*	June 15, 2018	55.92	\$ -	\$ 780.00	\$ 64.09	Blue Thunder Mining Corporation (97012) 100 % (responsible)
32G07	CDC	2449207*	June 15, 2018	55.92	\$ -	\$ 780.00	\$ 64.09	Blue Thunder Mining Corporation (97012) 100 % (responsible)
32G07	CDC	2449208*	June 15, 2018	55.92	\$ -	\$ 780.00	\$ 64.09	Blue Thunder Mining Corporation (97012) 100 % (responsible)
32G07	CDC	2449209*	June 15, 2018	55.92	\$ -	\$ 780.00	\$ 64.09	Blue Thunder Mining Corporation (97012) 100 % (responsible)
32G06	CDC	2456434	August 7, 2018	55.94	\$ -	\$ 780.00	\$ 64.09	Blue Thunder Mining Corporation (97012) 100 % (responsible)
32G06	CDC	2456435	August 7, 2018	55.94	\$ -	\$ 780.00	\$ 64.09	Blue Thunder Mining Corporation (97012) 100 % (responsible)
32G06	CDC	2456436	August 7, 2018	55.93	\$ -	\$ 780.00	\$ 64.09	Blue Thunder Mining Corporation (97012) 100 % (responsible)
32G06	CDC	2456437	August 7, 2018	55.93	\$ -	\$ 780.00	\$ 64.09	Blue Thunder Mining Corporation (97012) 100 % (responsible)



32G06	CDC	2456438	August 7, 2018	55.93	\$ -	\$ 780.00	\$ 64.09	Blue Thunder Mining Corporation (97012) 100 % (responsible)
32G06	CDC	2456439	August 7, 2018	55.93	\$ -	\$ 780.00	\$ 64.09	Blue Thunder Mining Corporation (97012) 100 % (responsible)
32G06	CDC	2456440	August 7, 2018	55.93	\$ -	\$ 780.00	\$ 64.09	Blue Thunder Mining Corporation (97012) 100 % (responsible)
32G06	CDC	2456441	August 7, 2018	55.93	\$ -	\$ 780.00	\$ 64.09	Blue Thunder Mining Corporation (97012) 100 % (responsible)
32G06	CDC	2456442	August 7, 2018	55.92	\$ -	\$ 780.00	\$ 64.09	Blue Thunder Mining Corporation (97012) 100 % (responsible)
32G06	CDC	2456443	August 7, 2018	55.92	\$ -	\$ 780.00	\$ 64.09	Blue Thunder Mining Corporation (97012) 100 % (responsible)
32G06	CDC	2456444	August 7, 2018	55.92	\$ -	\$ 780.00	\$ 64.09	Blue Thunder Mining Corporation (97012) 100 % (responsible)
32G06	CDC	2456445	August 7, 2018	55.92	\$ -	\$ 780.00	\$ 64.09	Blue Thunder Mining Corporation (97012) 100 % (responsible)
32G06	CDC	2456446	August 7, 2018	55.92	\$ -	\$ 780.00	\$ 64.09	Blue Thunder Mining Corporation (97012) 100 % (responsible)
32G06	CDC	2456447	August 7, 2018	55.91	\$ -	\$ 780.00	\$ 64.09	Blue Thunder Mining Corporation (97012) 100 % (responsible)
32G06	CDC	2456448	August 7, 2018	55.91	\$ -	\$ 780.00	\$ 64.09	Blue Thunder Mining Corporation (97012) 100 % (responsible)
32G06	CDC	2456449	August 7, 2018	55.91	\$ -	\$ 780.00	\$ 64.09	Blue Thunder Mining Corporation (97012) 100 % (responsible)
32G10	CDC	2457525	August 14, 2018	55.88	\$ -	\$ 780.00	\$ 64.09	Blue Thunder Mining Corporation (97012) 100 % (responsible)
32G10	CDC	2457526	August 14, 2018	55.87	\$ -	\$ 780.00	\$ 64.09	Blue Thunder Mining Corporation (97012) 100 % (responsible)
32G10	CDC	2457527	August 14, 2018	55.87	\$ -	\$ 780.00	\$ 64.09	Blue Thunder Mining Corporation (97012) 100 % (responsible)



32G10	CDC	2457528	August 14, 2018	55.87	\$ -	\$ 780.00	\$ 64.09	Blue Thunder Mining Corporation (97012) 100 % (responsible)
32G10	CDC	2457529	August 14, 2018	55.87	\$ -	\$ 780.00	\$ 64.09	Blue Thunder Mining Corporation (97012) 100 % (responsible)
32G10	CDC	2457530	August 14, 2018	55.86	\$ -	\$ 780.00	\$ 64.09	Blue Thunder Mining Corporation (97012) 100 % (responsible)
32G10	CDC	2457531	August 14, 2018	55.86	\$ -	\$ 780.00	\$ 64.09	Blue Thunder Mining Corporation (97012) 100 % (responsible)
32G10	CDC	2457532	August 14, 2018	55.86	\$ -	\$ 780.00	\$ 64.09	Blue Thunder Mining Corporation (97012) 100 % (responsible)
32G10	CDC	2457533	August 14, 2018	55.86	\$ -	\$ 780.00	\$ 64.09	Blue Thunder Mining Corporation (97012) 100 % (responsible)
32G10	CDC	2457534	August 14, 2018	55.86	\$ -	\$ 780.00	\$ 64.09	Blue Thunder Mining Corporation (97012) 100 % (responsible)
32G10	CDC	2458273	August 16, 2018	52.92	\$ -	\$ 780.00	\$ 64.09	Blue Thunder Mining Corporation (97012) 100 % (responsible)
32G10	CDC	2458274	August 16, 2018	48.43	\$ -	\$ 780.00	\$ 64.09	Blue Thunder Mining Corporation (97012) 100 % (responsible)
32G10	CDC	2411460	September 3, 2018	55.89	\$ -	\$ 780.00	\$ 64.09	Blue Thunder Mining Corporation (97012) 100 % (responsible)
32G07	CDC	2462098	September 12, 2018	55.93	\$ -	\$ 780.00	\$ 64.09	Blue Thunder Mining Corporation (97012) 100 % (responsible)
32G07	CDC	2462099	September 12, 2018	55.93	\$ -	\$ 780.00	\$ 64.09	Blue Thunder Mining Corporation (97012) 100 % (responsible)
32G07	CDC	2462100	September 12, 2018	55.92	\$ -	\$ 780.00	\$ 64.09	Blue Thunder Mining Corporation (97012) 100 % (responsible)
32G07	CDC	2462101	September 12, 2018	55.92	\$ -	\$ 780.00	\$ 64.09	Blue Thunder Mining Corporation (97012) 100 % (responsible)
32G07	CDC	2462102	September 12, 2018	55.92	\$ -	\$ 780.00	\$ 64.09	Blue Thunder Mining Corporation (97012) 100 % (responsible)



32G07	CDC	2462103	September 12, 2018	55.92	\$ -	\$ 780.00	\$ 64.09	Blue Thunder Mining Corporation (97012) 100 % (responsible)
32G07	CDC	2462104	September 12, 2018	55.92	\$ -	\$ 780.00	\$ 64.09	Blue Thunder Mining Corporation (97012) 100 % (responsible)
32G07	CDC	2462105	September 12, 2018	55.92	\$ -	\$ 780.00	\$ 64.09	Blue Thunder Mining Corporation (97012) 100 % (responsible)
32G07	CDC	2462106	September 12, 2018	55.92	\$ -	\$ 780.00	\$ 64.09	Blue Thunder Mining Corporation (97012) 100 % (responsible)
32G07	CDC	2462107	September 12, 2018	55.92	\$ -	\$ 780.00	\$ 64.09	Blue Thunder Mining Corporation (97012) 100 % (responsible)
32G07	CDC	2462108	September 12, 2018	55.91	\$ -	\$ 780.00	\$ 64.09	Blue Thunder Mining Corporation (97012) 100 % (responsible)
32G07	CDC	2462109	September 12, 2018	55.92	\$ -	\$ 780.00	\$ 64.09	Blue Thunder Mining Corporation (97012) 100 % (responsible)
32G07	CDC	2462110	September 12, 2018	55.92	\$ -	\$ 780.00	\$ 64.09	Blue Thunder Mining Corporation (97012) 100 % (responsible)
32G07	CDC	2462111	September 12, 2018	55.91	\$ -	\$ 780.00	\$ 64.09	Blue Thunder Mining Corporation (97012) 100 % (responsible)
32G07	CDC	2464497	September 26, 2018	55.94	\$ -	\$ 780.00	\$ 64.09	Blue Thunder Mining Corporation (97012) 100 % (responsible)
32G07	CDC	2464498	September 26, 2018	55.93	\$ -	\$ 780.00	\$ 64.09	Blue Thunder Mining Corporation (97012) 100 % (responsible)
32G06	CDC	2465267	October 5, 2018	55.93	\$ -	\$ 780.00	\$ 64.09	Blue Thunder Mining Corporation (97012) 100 % (responsible)
32G07	CDC	2466249	October 19, 2018	55.91	\$ -	\$ 780.00	\$ 64.09	Blue Thunder Mining Corporation (97012) 100 % (responsible)
32G07	CDC	2467423	October 31, 2018	55.91	\$ -	\$ 780.00	\$ 64.09	Blue Thunder Mining Corporation (97012) 100 % (responsible)
32G07	CDC	2470002	November 28, 2018	55.94	\$ -	\$ 780.00	\$ 64.09	Blue Thunder Mining Corporation (97012) 100 % (responsible)



32G07	CDC	2470003	November 28, 2018	55.93	\$ -	\$ 780.00	\$ 64.09	Blue Thunder Mining Corporation (97012) 100 % (responsible)
32G07	CDC	2471028	December 12, 2018	55.97	\$ -	\$ 780.00	\$ 64.09	Blue Thunder Mining Corporation (97012) 100 % (responsible)
32G07	CDC	2477363	February 6, 2019	55.95	\$ -	\$ 780.00	\$ 64.09	Blue Thunder Mining Corporation (97012) 100 % (responsible)
32G07	CDC	2477364	February 6, 2019	55.95	\$ -	\$ 780.00	\$ 64.09	Blue Thunder Mining Corporation (97012) 100 % (responsible)
32G07	CDC	2477365	February 6, 2019	55.95	\$ -	\$ 780.00	\$ 64.09	Blue Thunder Mining Corporation (97012) 100 % (responsible)
32G07	CDC	2477366	February 6, 2019	55.94	\$ -	\$ 780.00	\$ 64.09	Blue Thunder Mining Corporation (97012) 100 % (responsible)
32G07	CDC	2477367	February 6, 2019	55.94	\$ -	\$ 780.00	\$ 64.09	Blue Thunder Mining Corporation (97012) 100 % (responsible)
32G07	CDC	2477368	February 6, 2019	55.94	\$ -	\$ 780.00	\$ 64.09	Blue Thunder Mining Corporation (97012) 100 % (responsible)
32G07	CDC	2477369	February 6, 2019	55.94	\$ -	\$ 780.00	\$ 64.09	Blue Thunder Mining Corporation (97012) 100 % (responsible)
32G07	CDC	2477370	February 6, 2019	55.93	\$ -	\$ 780.00	\$ 64.09	Blue Thunder Mining Corporation (97012) 100 % (responsible)
32G07	CDC	2477371	February 6, 2019	55.92	\$ -	\$ 780.00	\$ 64.09	Blue Thunder Mining Corporation (97012) 100 % (responsible)
32G07	CDC	2477372	February 6, 2019	55.92	\$ -	\$ 780.00	\$ 64.09	Blue Thunder Mining Corporation (97012) 100 % (responsible)
32G07	CDC	2477373	February 6, 2019	55.92	\$ -	\$ 780.00	\$ 64.09	Blue Thunder Mining Corporation (97012) 100 % (responsible)
32G06	CDC	2480152	February 20, 2019	55.94	\$ -	\$ 780.00	\$ 64.09	Blue Thunder Mining Corporation (97012) 100 % (responsible)
32G06	CDC	2484323	March 12, 2019	55.94	\$ -	\$ 780.00	\$ 64.09	Blue Thunder Mining Corporation (97012) 100 % (responsible)



32G06	CDC	2484324	March 12, 2019	55.94	\$ -	\$ 780.00	\$ 64.09	Blue Thunder Mining Corporation (97012) 100 % (responsible)
32G06	CDC	2484325	March 12, 2019	55.94	\$ -	\$ 780.00	\$ 64.09	Blue Thunder Mining Corporation (97012) 100 % (responsible)
32G06	CDC	2484326	March 12, 2019	55.94	\$ -	\$ 780.00	\$ 64.09	Blue Thunder Mining Corporation (97012) 100 % (responsible)
32G06	CDC	2484327	March 12, 2019	55.93	\$ -	\$ 780.00	\$ 64.09	Blue Thunder Mining Corporation (97012) 100 % (responsible)
32G06	CDC	2484328	March 12, 2019	55.93	\$ -	\$ 780.00	\$ 64.09	Blue Thunder Mining Corporation (97012) 100 % (responsible)
32G06	CDC	2484329	March 12, 2019	55.93	\$ -	\$ 780.00	\$ 64.09	Blue Thunder Mining Corporation (97012) 100 % (responsible)
32G06	CDC	2484330	March 12, 2019	55.92	\$ -	\$ 780.00	\$ 64.09	Blue Thunder Mining Corporation (97012) 100 % (responsible)
32G06	CDC	2484331	March 12, 2019	55.92	\$ -	\$ 780.00	\$ 64.09	Blue Thunder Mining Corporation (97012) 100 % (responsible)
32G06	CDC	2484332	March 12, 2019	55.92	\$ -	\$ 780.00	\$ 64.09	Blue Thunder Mining Corporation (97012) 100 % (responsible)
32G06	CDC	2484333	March 12, 2019	55.91	\$ -	\$ 780.00	\$ 64.09	Blue Thunder Mining Corporation (97012) 100 % (responsible)
32G06	CDC	2484334	March 12, 2019	55.91	\$ -	\$ 780.00	\$ 64.09	Blue Thunder Mining Corporation (97012) 100 % (responsible)
32G07	CDC	2484335	March 12, 2019	55.91	\$ -	\$ 780.00	\$ 64.09	Blue Thunder Mining Corporation (97012) 100 % (responsible)
32G07	CDC	2485006	March 19, 2019	55.92	\$ -	\$ 780.00	\$ 64.09	Blue Thunder Mining Corporation (97012) 100 % (responsible)
32G10	CDC	2485007	March 19, 2019	55.87	\$ -	\$ 780.00	\$ 64.09	Blue Thunder Mining Corporation (97012) 100 % (responsible)
32G06	CDC	2489716	April 20, 2019	55.92	\$ -	\$ 780.00	\$ 64.09	Blue Thunder Mining Corporation (97012) 100 % (responsible)



32G06	CDC	2489717	April 20, 2019	55.92	\$ -	\$ 780.00	\$ 64.09	Blue Thunder Mining Corporation (97012) 100 % (responsible)
32G06	CDC	2489718	April 20, 2019	55.92	\$ -	\$ 780.00	\$ 64.09	Blue Thunder Mining Corporation (97012) 100 % (responsible)
32G07	CDC	2489719	April 20, 2019	55.94	\$ -	\$ 780.00	\$ 64.09	Blue Thunder Mining Corporation (97012) 100 % (responsible)
32G07	CDC	2489720	April 20, 2019	55.92	\$ -	\$ 780.00	\$ 64.09	Blue Thunder Mining Corporation (97012) 100 % (responsible)
32G07	CDC	2489721	April 20, 2019	55.91	\$ -	\$ 780.00	\$ 64.09	Blue Thunder Mining Corporation (97012) 100 % (responsible)
32G07	CDC	2489722	April 20, 2019	55.91	\$ -	\$ 780.00	\$ 64.09	Blue Thunder Mining Corporation (97012) 100 % (responsible)
32G07	CDC	2489723	April 20, 2019	55.91	\$ -	\$ 780.00	\$ 64.09	Blue Thunder Mining Corporation (97012) 100 % (responsible)
32G07	CDC	2427253	April 27, 2019	55.96	\$ -	\$ 780.00	\$ 64.09	Blue Thunder Mining Corporation (97012) 100 % (responsible)
32G07	CDC	2427254	April 27, 2019	55.95	\$ -	\$ 780.00	\$ 64.09	Blue Thunder Mining Corporation (97012) 100 % (responsible)
32G07	CDC	2491583	May 4, 2019	55.91	\$ -	\$ 780.00	\$ 64.09	Blue Thunder Mining Corporation (97012) 100 % (responsible)
32G10	CDC	2491584	May 4, 2019	55.9	\$ -	\$ 780.00	\$ 64.09	Blue Thunder Mining Corporation (97012) 100 % (responsible)
32G10	CDC	2491585	May 4, 2019	55.9	\$ -	\$ 780.00	\$ 64.09	Blue Thunder Mining Corporation (97012) 100 % (responsible)
32G10	CDC	2491586	May 4, 2019	55.89	\$ -	\$ 780.00	\$ 64.09	Blue Thunder Mining Corporation (97012) 100 % (responsible)
32G10	CDC	2491587	May 4, 2019	55.89	\$ -	\$ 780.00	\$ 64.09	Blue Thunder Mining Corporation (97012) 100 % (responsible)
32G07	CDC	2491588	May 4, 2019	55.91	\$ -	\$ 780.00	\$ 64.09	Blue Thunder Mining Corporation (97012) 100 % (responsible)



32G07	CDC	2491589	May 4, 2019	55.91	\$ -	\$ 780.00	\$ 64.09	Blue Thunder Mining Corporation (97012) 100 % (responsible)
32G10	CDC	2491590	May 4, 2019	55.9	\$ -	\$ 780.00	\$ 64.09	Blue Thunder Mining Corporation (97012) 100 % (responsible)
32G10	CDC	2491591	May 4, 2019	55.89	\$ -	\$ 780.00	\$ 64.09	Blue Thunder Mining Corporation (97012) 100 % (responsible)
32G10	CDC	2491592	May 4, 2019	55.9	\$ -	\$ 780.00	\$ 64.09	Blue Thunder Mining Corporation (97012) 100 % (responsible)
32G10	CDC	2491593	May 4, 2019	55.89	\$ -	\$ 780.00	\$ 64.09	Blue Thunder Mining Corporation (97012) 100 % (responsible)
32G07	CDC	2491594	May 4, 2019	55.93	\$ -	\$ 780.00	\$ 64.09	Blue Thunder Mining Corporation (97012) 100 % (responsible)
32G07	CDC	2491595	May 4, 2019	55.93	\$ -	\$ 780.00	\$ 64.09	Blue Thunder Mining Corporation (97012) 100 % (responsible)
32G07	CDC	2491596	May 4, 2019	55.93	\$ -	\$ 780.00	\$ 64.09	Blue Thunder Mining Corporation (97012) 100 % (responsible)
32G07	CDC	2491597	May 4, 2019	55.93	\$ -	\$ 780.00	\$ 64.09	Blue Thunder Mining Corporation (97012) 100 % (responsible)
32G07	CDC	2491598	May 4, 2019	55.93	\$ -	\$ 780.00	\$ 64.09	Blue Thunder Mining Corporation (97012) 100 % (responsible)
32G07	CDC	2491599	May 4, 2019	55.91	\$ -	\$ 780.00	\$ 64.09	Blue Thunder Mining Corporation (97012) 100 % (responsible)
32G07	CDC	2491600	May 4, 2019	55.91	\$ -	\$ 780.00	\$ 64.09	Blue Thunder Mining Corporation (97012) 100 % (responsible)
32G07	CDC	2491601	May 4, 2019	55.91	\$ -	\$ 780.00	\$ 64.09	Blue Thunder Mining Corporation (97012) 100 % (responsible)
32G10	CDC	2491602	May 4, 2019	55.9	\$ -	\$ 780.00	\$ 64.09	Blue Thunder Mining Corporation (97012) 100 % (responsible)
32G10	CDC	2491603	May 4, 2019	55.9	\$ -	\$ 780.00	\$ 64.09	Blue Thunder Mining Corporation (97012) 100 % (responsible)



32G10	CDC	2491604	May 4, 2019	55.9	\$ -	\$ 780.00	\$ 64.09	Blue Thunder Mining Corporation (97012) 100 % (responsible)
32G10	CDC	2491605	May 4, 2019	55.89	\$ -	\$ 780.00	\$ 64.09	Blue Thunder Mining Corporation (97012) 100 % (responsible)
32G07	CDC	2491928	May 8, 2019	55.93	\$ -	\$ 780.00	\$ 64.09	Blue Thunder Mining Corporation (97012) 100 % (responsible)
32G07	CDC	2491929	May 8, 2019	55.93	\$ -	\$ 780.00	\$ 64.09	Blue Thunder Mining Corporation (97012) 100 % (responsible)
32G07	CDC	2491930	May 8, 2019	55.93	\$ -	\$ 780.00	\$ 64.09	Blue Thunder Mining Corporation (97012) 100 % (responsible)
32G07	CDC	2492059	May 11, 2019	55.95	\$ -	\$ 780.00	\$ 64.09	Blue Thunder Mining Corporation (97012) 100 % (responsible)
32G07	CDC	2492060	May 11, 2019	55.95	\$ -	\$ 780.00	\$ 64.09	Blue Thunder Mining Corporation (97012) 100 % (responsible)
32G06	CDC	2492061	May 11, 2019	55.94	\$ -	\$ 780.00	\$ 64.09	Blue Thunder Mining Corporation (97012) 100 % (responsible)
32G07	CDC	2492062	May 11, 2019	55.94	\$ -	\$ 780.00	\$ 64.09	Blue Thunder Mining Corporation (97012) 100 % (responsible)
32G07	CDC	2492063	May 11, 2019	55.94	\$ -	\$ 780.00	\$ 64.09	Blue Thunder Mining Corporation (97012) 100 % (responsible)
32G07	CDC	2492064	May 11, 2019	55.94	\$ -	\$ 780.00	\$ 64.09	Blue Thunder Mining Corporation (97012) 100 % (responsible)
32G07	CDC	2492065	May 11, 2019	55.94	\$ -	\$ 780.00	\$ 64.09	Blue Thunder Mining Corporation (97012) 100 % (responsible)
32G07	CDC	2492066	May 11, 2019	55.94	\$ -	\$ 780.00	\$ 64.09	Blue Thunder Mining Corporation (97012) 100 % (responsible)
32G07	CDC	2492067	May 11, 2019	55.94	\$ -	\$ 780.00	\$ 64.09	Blue Thunder Mining Corporation (97012) 100 % (responsible)
32G07	CDC	2492068	May 11, 2019	55.94	\$ -	\$ 780.00	\$ 64.09	Blue Thunder Mining Corporation (97012) 100 % (responsible)



32G07	CDC	2492069	May 11, 2019	55.94	\$ -	\$ 780.00	\$ 64.09	Blue Thunder Mining Corporation (97012) 100 % (responsible)
32G07	CDC	2492070	May 11, 2019	55.94	\$ -	\$ 780.00	\$ 64.09	Blue Thunder Mining Corporation (97012) 100 % (responsible)
32G07	CDC	2492071	May 11, 2019	55.94	\$ -	\$ 780.00	\$ 64.09	Blue Thunder Mining Corporation (97012) 100 % (responsible)
32G07	CDC	2492072	May 11, 2019	55.94	\$ -	\$ 780.00	\$ 64.09	Blue Thunder Mining Corporation (97012) 100 % (responsible)
32G07	CDC	2492073	May 11, 2019	55.93	\$ -	\$ 780.00	\$ 64.09	Blue Thunder Mining Corporation (97012) 100 % (responsible)
32G07	CDC	2492074	May 11, 2019	55.93	\$ -	\$ 780.00	\$ 64.09	Blue Thunder Mining Corporation (97012) 100 % (responsible)
32G07	CDC	2492075	May 11, 2019	55.93	\$ -	\$ 780.00	\$ 64.09	Blue Thunder Mining Corporation (97012) 100 % (responsible)
32G07	CDC	2494173	May 29, 2019	55.97	\$ -	\$ 780.00	\$ 64.09	Blue Thunder Mining Corporation (97012) 100 % (responsible)
32G07	CDC	2431802	July 30, 2019	55.94	\$ -	\$ 780.00	\$ 64.09	Blue Thunder Mining Corporation (97012) 100 % (responsible)
32G07	CDC	2431803	July 30, 2019	55.94	\$ -	\$ 780.00	\$ 64.09	Blue Thunder Mining Corporation (97012) 100 % (responsible)
32G07	CDC	2431804	July 30, 2019	55.94	\$ -	\$ 780.00	\$ 64.09	Blue Thunder Mining Corporation (97012) 100 % (responsible)
32G07	CDC	2433806	October 7, 2019	55.94	\$ -	\$ 780.00	\$ 64.09	Blue Thunder Mining Corporation (97012) 100 % (responsible)
32G07	CDC	2433807	October 7, 2019	55.94	\$ -	\$ 780.00	\$ 64.09	Blue Thunder Mining Corporation (97012) 100 % (responsible)
32G07	CDC	2433808	October 7, 2019	55.94	\$ -	\$ 780.00	\$ 64.09	Blue Thunder Mining Corporation (97012) 100 % (responsible)
32G07	CDC	2433809	October 7, 2019	55.93	\$ -	\$ 780.00	\$ 64.09	Blue Thunder Mining Corporation (97012) 100 % (responsible)



32G07	CDC	2433810	October 7, 2019	55.93	\$ -	\$ 780.00	\$ 64.09	Blue Thunder Mining Corporation (97012) 100 % (responsible)
32G07	CDC	2434455	October 25, 2019	55.92	\$ -	\$ 780.00	\$ 64.09	Blue Thunder Mining Corporation (97012) 100 % (responsible)
32G07	CDC	2434456	October 25, 2019	55.91	\$ -	\$ 780.00	\$ 64.09	Blue Thunder Mining Corporation (97012) 100 % (responsible)
		226			\$ -	\$ 176,280.00	\$ 15,445.69	