

GM 67367

REPORT ON 2011 SONIC DRILLING PROGRAM, BEAUCE PLACER PROPERTY

Documents complémentaires

Additional Files



Licence



License

Cette première page a été ajoutée
au document et ne fait pas partie du
rapport tel que soumis par les auteurs.

Énergie et Ressources
naturelles

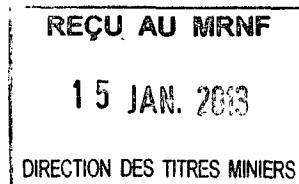
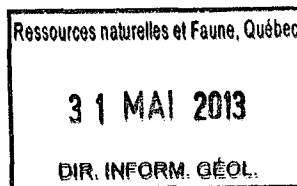
Québec 

Report on 2011 sonic drilling program,
Beauce Placer Property,
Southeastern, Québec

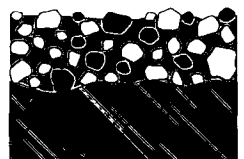
GM 67367

Uragold Bay Resources Inc.
January 2013

Rémi Charbonneau
and
Steven Lauzier
SL Exploration Inc.



INLANDSIS
Consultants



1267993

Executive summary

Sonic drilling allowed coring of sedimentary units and recovery of visible gold from the buried gold placer at the Beauce Placer Projet of Uragold Bay Resources Inc. The property is located in the Rivière Gilbert Valley southeast of Beauceville in the Appalachians of southern Québec. The property is made of 6 claims for a total of 106 ha. The property is located 3 km northeast of Saint-Simon-les-Mines where the discovery of a 3 oz nugget was made in 1846. Gold was then mined intermittently in various rivers tributary to the Chaudière River. In 1957, Beauce Placer drilled the area to estimate the volumes and gold contents of the buried placers and they operate drag line and dredging operations from 1959 to 1962, on the southwestern and central part of the actual Property. Despite a significant production of 56 000 oz gold, it ceased its operation after 1961 due to various problems. Interest was renewed in the mid-eighties, with Coniagas Mines Ltd investigating the Chaudière Valley with RC-drilling. Prospection of the bedrock also remained important as several occurrences of lode gold are known in the region.

The present exploration works involve twelve sonic holes drilled in early 2011 with a very good recuperation of cores from the various unconsolidated sedimentary units. From top to bottom, these include (1) a grey silty diamict interpreted as the Upper Till Complex (2) laminated silt to fine sand rhythmites of glacial-lacustrine origin (3) a brown clayey diamict forming the Older Till and (4) a brown clayey diamict resulting from deep in situ alteration of the local bedrock. The older till appears to result from the incorporation of the alterite of Unit 4. Together, Unit 3 and Unit 4 constitute the gold bearing units of the buried placer known on the Property. Sonic drilling also allows the coring of fresh bedrock including pyritic shale, slate and felsic volcanoclastics layers of the Beauceville Formation.

Treatment of 22 samples (20-40 kg) from the lower brown diamict and the alterite returned 17 gold grains of medium to coarse size (0.2 to 2 mm). Scanning electron microscopy of these grains reveals (1) complex and fragile shape, (2) pitted surface made of pure gold and more regular surface with up to 30% silver, (3) inclusion of quartz, clay and iron oxide with the gold. Lines of evidence suggest that gold was released from sulphidic quartz veins over a long period of weathering and was glacially transported southward over a very short distance to its present position. Present estimates of gold grade from these relatively small diameter drillings are largely exceeded by past production numbers, which suggest that much of the gold is present as sparse nuggets (5-20 mm) which require bulk sampling to be correctly evaluated.

Table of content

Executive summary.....	2
Table of content	3
List of figures.....	4
List of table.....	4
Appendices	4
Introduction.....	5
Property Description and Location	5
Physiography	5
Geology.....	7
Glacial geology and Quaternary Stratigraphy.....	9
Claim status.....	10
Previous exploration works	10
<i>Churn Drilling 59</i>	11
<i>Drag line and dredge operation</i>	11
<i>RC Drilling 85</i>	12
<i>GSC Sonic drilling</i>	12
<i>RC drilling 1987</i>	12
Exploration works.....	13
Sonic drilling campaign	13
Description and sampling	14
Sample treatment	15
<i>Washing of clay</i>	15
<i>Sieving and panning</i>	15
Lithogeochemical sampling.....	16
Scanning Electron Microscopy analysis	16
Laboratory assay	17
Results.....	17
Sedimentological observations	17
Visible gold results	20
Scanning electron microscopy (SEM) analysis.	20
Dense fraction assay results.....	22
Bedrock assay results.....	22
Discussion	22
Origin of the sedimentary units.	22
Stratigraphic Assignment.....	23
Inference on gold source.....	24
Inference on volume estimates	25
Conclusions.....	26
Recommendations.....	28
References.....	29

List of figures

Figure 1. Location of the project area.....	6
Figure 2. Claim map and sonic hole location.....	7
Figure 3. Geology of the Property	8
Figure 4. Graphical sections from sonic cores.....	18
Figure 5. Pictures of sedimentary units.....	19
Figure 6. Pictures of gold grains	21

List of table

Table 1. Quaternary Stratigraphy of southeastern Québec	9
Table 2. Claim List.....	10
Table 3. Sonic hole characteristics.....	14
Table 4. Piezzometer characteristics	14
Table 5. Visible gold results.....	21

Appendices

Appendix I. Description of previous works from assessment reports

Appendix II. Descriptive logs

Appendix III. Sample processing data

Appendix IV. SEM results

Appendix V. Dense fraction assay

Appendix VI. Bedrock assay

Introduction

Inlandsis Consultants were commissioned by Uragold Bay Resources Inc to supervise an overburden drilling program at their Beauce Placer Property, in the Gilbert River Valley of Southern Québec. Historically, the property was the site of mining operations for placer gold. The objective of this program is to collect samples of the known buried auriferous units and to better understand their origin and the provenance of gold.

Property Description and Location

The Beauce Placer Property is located in southern Québec, 80 km SE of Quebec City (Figure 1). The area is depicted on the NTS map sheet 21L02 at the 1 : 50 000 scale. The property is composed of 6 claims with a total surface 106 ha (Figure 2). It has a “tomahack” shape, including a rectangular handle, a central head and a long SE extension. Uragold Bay acquires these claims from different Prospectors. It is of note that surface rights for certain lot of the property have been acquired by Uragold, from its previous owner Quebec Lithium inc. Consequently, the latter will own both mining claims and surface rights. Access to the property is easy due to its location in developed areas of southern Quebec. From the nearby village of *Saint-Simon-les-Mines*, the Veilleux and Potvin roads crosses the southeast end of the property. Access is also provided from the SW via the Chaussegros Range and to the NE via the Saint-Gustave range. The drilling sites can be accessed by a four-wheel trail from the Chaussegros range.

Physiography

The property occupied the bottom of a wide valley bordered long gentle slope on both sides. The drilling lines were positioned on flat zone along the access roads at the 280 meters level. Gilbert River is at the 270 meter level.

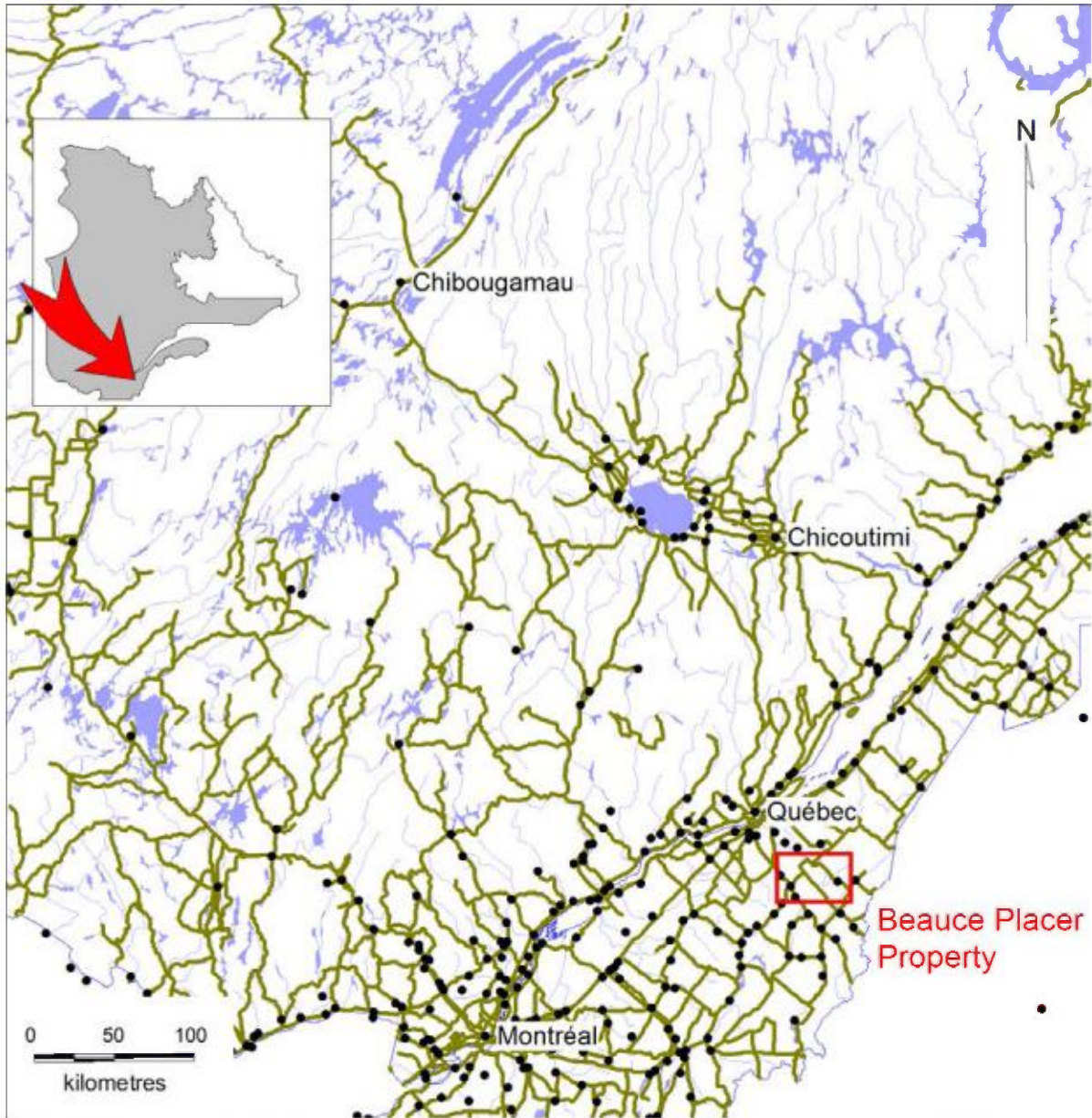


Figure 1. Location of the project area.

The Beauce Region is characterized by a humid continental climate. The drilling was carried during winter and the weather was generally sunny except for a few snowy days. The core treatment was done during fall and was met with snowy and rainy days a few times a week. Some snow drops happened in March and complicated the core treatment due to access problems.

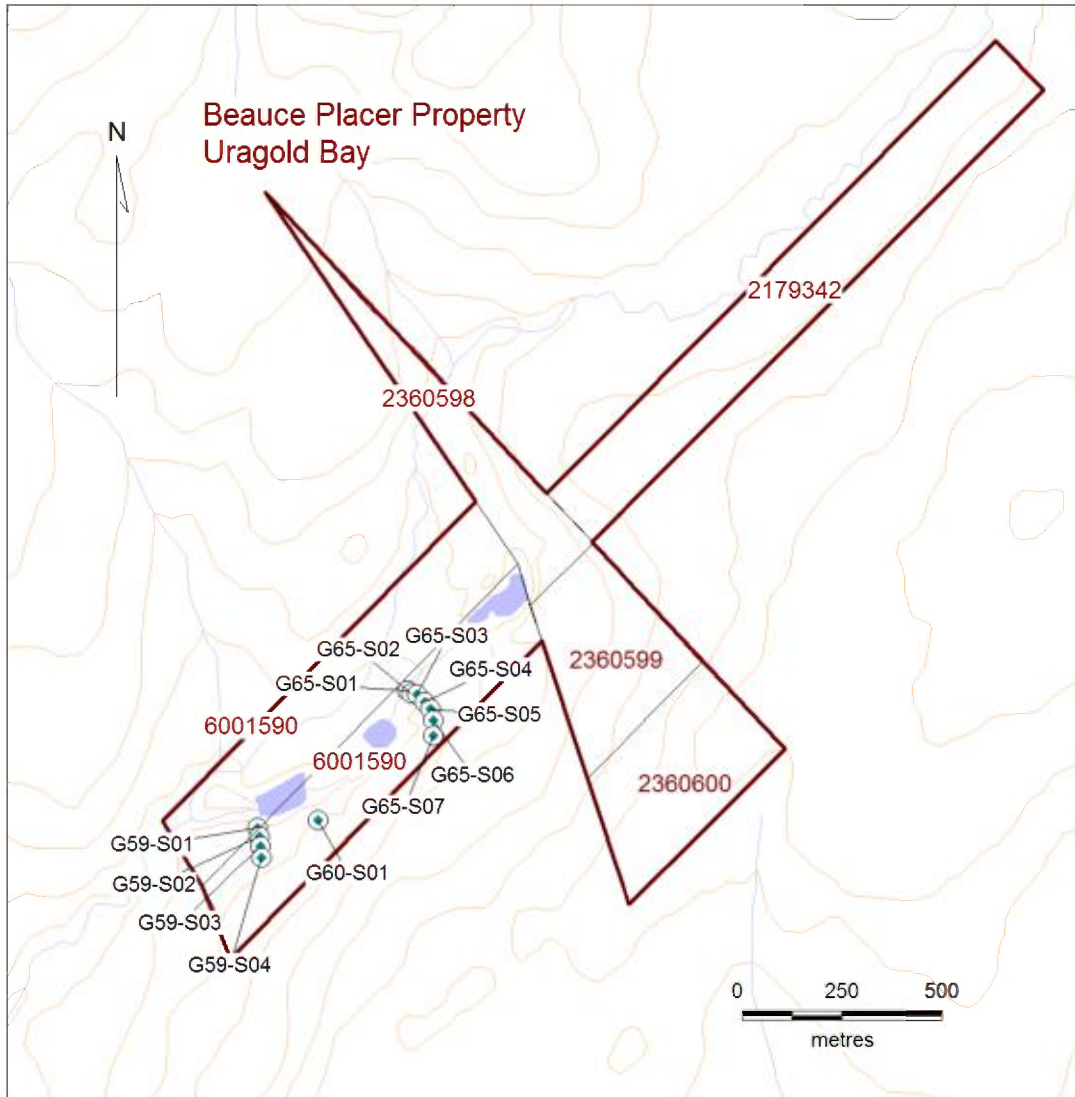


Figure 2. Claim map and sonic holes location.

Geology

The studied area belongs to the Appalachian structural Province and is part of the Saint-Victor synclinorium, a syn to post orogenic flysch sequence (Figure 3). This structural zone is of Middle to Upper Ordovician age and includes the Magog Group which is subdivided into the St-Victor, Beauceville, Etchemin and Frontière Formations (Cousineau 1984). The Saint-Victor formation

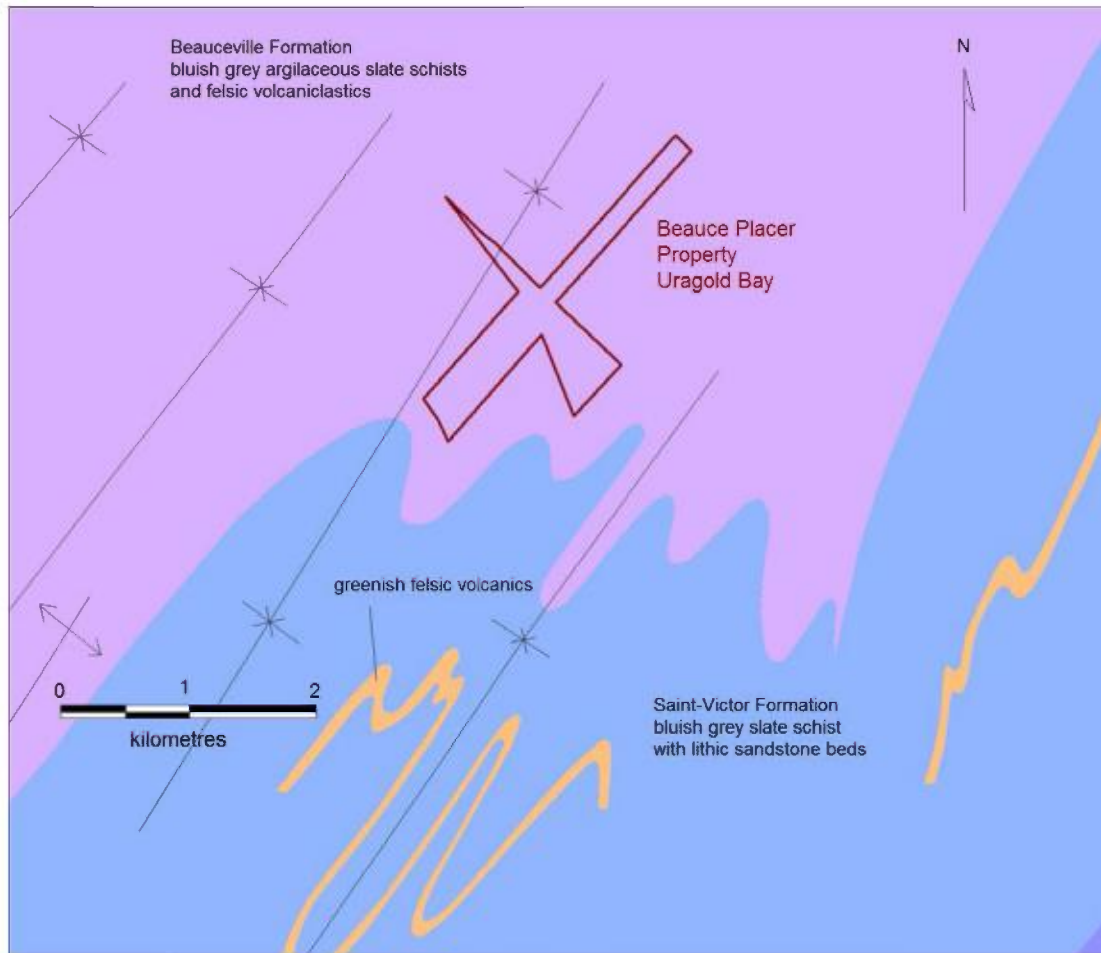


Figure 3. Geology of the Property.

is composed of turbidites (lithic wacke and argillite). Black pyritic shales were noted during the present drilling program, as well as a contact with a silt unit and a volcanoclastic roc. A dewatering structure was also present in a siltstone. Isoclinal folding is known in the region. An anticlinal fold is suspected to cross the property with a NE-SW axis since the presence of synclinal folding are on both side of the property.

The presence of saprolite in Beauce area has been documented by P. La Salle in 1977 and 1979. In the drills cores, the saprolite unit is underlain by fractured and oxidized shale. Fresh shale is present a few meters under the saprolite.

Glacial geology and Quaternary Stratigraphy

The Stratigraphic sequence in the Gilbert River area is complex (LaSalle 1984 and Lamothe 1989) and has been established from RC drilling (McDonald and Shilts 1971) and sonic cores (Shilts and Smith 1986, 1988). Three glaciations periods, possibly four, are present on the Gilbert River section and three inter-glaciation periods are found. The Quaternary stratigraphy is presented in table 1.

Table 1. Quaternary stratigraphy of southeastern Québec (McDonald and Shilts 1971, LaSalle 1984, Shilts and Smith 1986, 1988).

Sedimentary unit	Stratigraphic assignment
Blue-gray, compact diamict, 30% clasts, dominantly silt matrix.	Lennoxville Till
Laminated fine grained silt to fine sand.	Gayhurst Sediments (interstade)
Brownish gray and compact diamict with clasts content ranging from 20 to 30% and a dominantly silt matrix.	Chaudière Till
Fluvial and lacustrine sediments. Usually gravel with abundant pebbles with a rusty-brown colour due to intense oxidation. Varved brown clay. This unit is not observed on Beauce Placer Property.	Massawipi Sediments (interstade)
Brown diamict with high clay content. This diamict contains about 30-40 % clasts and is usually very compact. The clasts are mainly shale rocks but also contain ultramafics.	Johnville Till
Grey to blue grey laminated silt and sand, described at Rivière Gilbert from sonic core by Shilts and Smith (1986, 1988)	Pre-Johnville glacio lacustrine sediment
Orange to brown clayey diamict about 40% clasts. Described at Rivière Gilbert from sonic core by Shilts and Smith (1986, 1988)	Pre-Johnville Till

Before Quaternary glaciations, the region underwent warm, humid conditions causing deep weathering of bedrock into saprolite and soil forming processes developed laterite-like profiles. Sedimentation in a fluvial system and slumping of surficial materials formed a thick colluvial mantle over the valley bottom (Shilts and Smith 1988). The advance of the Johnville glacier may have been the first major erosional event over the region although pre-Johnville fluvial gravels of *Rivière de la Grande Coulée* contain Precambrian erratic indicative on an earlier glacial event (Shilts and Smith 1988). Overlying the pre-Johnville till is a thick sediment sequence that is

mainly a silty-clay unit. Clay is sometimes overlain by silt and sand. The clay units are grey and uniform except for seldom, 30 cm thick, red basal unit. The contact between the sediments and the Pre-Johnville diamict is clear. Gold in the sequence of sediments would be most abundant in the preglacial material although regolith incorporated into Johnville Till could also be auriferous, according to Shilts and Smith (1988).

Claim status

Six (6) claims cover the Gilbert River project for a total area of 106,91 hectares (Table 2 and Figure 2). The largest claim holder next to the project is Fancamp Exploration LTD who owns almost all the other claims in the region for gold exploration. Close to the project, prospector Bertrand Brassard owns 52.45 hectares (2 claims) on the River while Jacques Lemelin own a 34.11 hectares claim next to Uragold Bay Resources's claims.

Table 2. Claim List.

Claim number	Ownership	Expiry date	Area (ha)
2179342	100% Uragold Bay Resources inc.	2013/02/11	27,16
2360598	100% Uragold Bay Resources inc.	2014/08/14	11,41
2360599	100% Uragold Bay Resources inc.	2014/08/14	12,90
2360600	100% Uragold Bay Resources inc.	2014/08/14	14,44
CLD6001590 lots #731and #736	100% Uragold Bay Resources inc.	2012/10/10	40,73

Previous exploration works

The presence of alluvial gold in the Beauce region is known since 1846 after a gold nugget was discovered by a Clothilde Gilbert, a young woman. Since that time, the region underwent recurrent period of gold exploration, as recorded by various document and assessment report, which are detailed in Appendix I. Gold was mined intermittently in the early years, from 1846 to 1885, in various tributary to the Chaudière River, which represents a 32 km by 20 km area. Placer gold was extracted by panning and sluicing and locally, shafts and tunnels were constructed (Obalski 1898, Cirkel 1911, Clark and Wares 1985). Systematic mining operations were undertaken at Ruisseau des Meules near 1910 using mainly pressurized water from a higher

lake level (Cirkel 1911). In 1957, the Beauce Placer drilled the area to estimate the volumes and gold contents of placers from the Gilbert River. This company started commercial exploitation in 1958 by the use of a drag line and added the operation of a Yuba Dredge in 1960. Beauce Placer ceased their operations in 1962 due to several problems (recovery of material and inadequate treatment). Interest for the Gilbert River placer was renewed in the mid-eighties, with Coniagas Mines Ltd investigating the property, conducting RC-drilling program to refine the estimation of volumes and gold contents. In parallel to the placer, prospection of the bedrock remains important as several occurrence of lode gold were discovered in the region (Charbonneau 1993 and 2005).

Churn Drilling 59

Churn drilling was done on the Gilbert River in 1958-1959 to evaluate the gold content of the placer. Churn drilling method consist of inserting a 7 inch casing that is pushed through the soil by percussion. Drill sections were done across the gilbert river, with 50 feet intervals between holes. The cuttings were brought to surface every few feet so that the panner can know the extracted volume of soil. The results indicated that substantial yardages of auriferous gravel were still existent at the valley bottom and that its recovery with a dredge mining operation was possible. The gold calculations were done using the values obtained at the bedrock interface (see GM11010 in Appendix I)

Drag line and dredge operation

The Beauce Placer Mining Company Ltd operates a placer gold exploitation on the central and southwestern part of the actual property from 1959 to 1961. The operation began with the use of a dragline in 1959 and a more efficient Huba dredge was added in 1960 and 1961. The start of the dredge was along the Saint-Gustave Range, 6 km upstream of the Chaudière River, on the Northeast Branch of the Gilbert, in Lot 791. The dredge could dig 17 m deep below pond level. The total production reaches 56 000 oz Gold over these three years and was ceased due to various technical problems (see GM44862 in Appendix I). Saint-Simon-Les-Mines citizens report that the main problem was gold recovery because the dredge started working upstream and keep working downstream. Such way of working means that the water always gets more slurry while working further down the Gilbert River. The dense and dirty water cause by the large

amount of clay minerals in the lower units makes it harder to recover and see gold at the treatment plant.

RC Drilling 85

In 1985, 40 RC drill holes were drilled in the Gilbert River area, for a total of 1288.1 meters. The drilling diameter was 12.5 centimetres. Samples, collected on 3 metres intervals were described and treated to allow recovery of coarse gold particles. The heavy mineral fraction was collected and analyzed for gold, using an amalgamation process at the Mineral Research Center of the Ministry of Energy and Resources. No significant gold value was obtained from laboratory assay on the remaining dense fraction after removal of visible gold. These drilling data were used for a Pre-43-101 estimation of volume returning 1,802,290 cubic meter of the buried gold placer unit at $0.775 \text{ g/m}^3 \text{ Au}$, for a total of 45,057 oz of gold (Gilbert 1986), belonging to the “exploration target” category.

GSC Sonic drilling

In 1985, the Geological Survey of Canada performed rotasonic drilling in the Chaudière River Area. Six of these holes were performed in the Gilbert River Valley where highly oxidized basal units appear to be older than any other sediments encounters in other valleys (Shilts and Smith 1986). These authors described the clay rich basal units and invoke a gold rich unit made of alluvial gravel cut into it. In a later publication Shilts and Smith (1988) presents partial results for visible gold processing of some of Gilbert River’s boreholes. Gold counts up to 7 grains are reported from the clay rich basal units. In this publication the lower brownish clayey diamict is interpreted as preglacial colluviums instead of a glacial deposit, despite anomalous but low Ni content of distant derivation.

RC drilling 1987

A seismic refraction survey was done over the area in 1987 in order to detect paleo-channels under the overburden which were then targeted for a drilling program. It was followed by a RC drilling program including 38 different holes, for a total of 920 m. Each hole was completed down to the bedrock to allow its sampling. The results were used to calculate a volume of gold bearing material of 668,000 cubic meters at 1,374 grams of gold per cubic meter. Of that volume, interesting material is estimated at 491,850 cubic meters at a 1,76 grams per cubic meter

grade (Gilbert 1988). Again these pre-43-101 estimates should be classified as an “exploration target” by today standard.

Exploration works

Sonic drilling campaign

Twelve sonic drill holes were completed between February 22nd and March 4th 2011 for a total of 342 m of relatively undisturbed core, including 40 m in fresh or fractured bedrocks (Figure 2 and Table 3). The drill target was emplaced relative to previous mapping of the buried gold placer (Gilbert 1988) and positioned in the field by the use of handheld GPS. During drilling, the 10 cm diameter cores were wrapped in plastic bags and placed in wooden boxes containing two 1.5 m sections. A considerable stretching, up to 20% increase in core length, accompanied by an equivalent factor in diameter reduction, may occur due to vibration during extrusion from the drill rods. Also, some dragging of unconsolidated material occur at the contact of the drilling rod so that the first millimeters at the core surface is made of reworked material entrained downward by the penetrating rod.

Sonic drilling implies coring by vibrating tubes that slowly rotate while penetrating the ground. The drilling technique allows the recovery of large quantity of material suitable for detailed stratigraphic descriptions since the cores remained mostly undisturbed. Recuperation of a high volume is necessary because of the nugget effect present in a coarse gold prospect. A gold nugget of considerable size heavily affects the gold content of the sample from which it is taken. In such condition, higher volume of sampled material is necessary to obtain a better representation of the real gold content. It is also noted that free gold could sink to the bottom of a RC drill hole and that phenomenon could explain the high gold concentration in bottom samples that were found in past results. In the present drilling campaign, a hole was considered completed after a run of 1 to 3 metres into relatively unaltered bedrock. The latter was then sampled for identification and laboratory assay.

Table 3. Sonic borehole characteristics.

Hole number	Easting (m)	Northing (m)	Altitude (m)	Depth (m)
G59-S01	371278	5120335	276	31.2
G59-S02	371282	5120313	276	38.7
G59-S03	371283	5120288	275	40.2
G59-S04	371285	5120260	277	38.7
G60-S01	371430	5120350	288	23.5
G65-S01	371660	5120668	276	23.5
G65-S02	371670	5120661	278	24.5
G65-S03	371684	5120659	278	25.1
G65-S04	371703	5120640	274	26.2
G65-S05	371718	5120622	279	26.2
G65-S06	371724	5120594	281	23.2
G65-S07	371722	5120556	285	20.4

*coordinates are Universal Transverse Mercator, zone 19, North American Datum 1983.

The boxes were then grouped nearby each hole and covered to prevent outside contamination and snow infiltration. After the treatment, a wooden plate is nailed on the boxes for long term protection. In view of future hydrogeological characterization, three piezometres were used for with the installation (Table 4).

Table 4. Piezometer characteristics

Identification	Hole number	Depth (m)	Sedimentary unit
PZ-1	G65-S02	21.3	Base of the clayey till and fractured bedrock
PZ-2	G65-S04	15.5	Silt clay rythmites
PZ-3	G60-S01	18.3	Fractured bedrock

Description and sampling

The entire core were cleaned and described according to their sedimentological characteristics. Descriptive log were prepared reporting every intersected units in detail by the use of drill log forms (Appendix II). The reportedly auriferous units (Shilts and Smith 1986 and Gilbert 1988) namely the lower brownish diamict and the underlying alterite were sampled for gold treatment. A two third split of the core was sampled in plastic bags for treatment while the remaining third was kept for reference.

Sample treatment

Gold determination was performed in two stage (1) extraction of visual gold by the use of a Milner Steel Batae and (2) laboratory assay of the remaining dense mineral fraction. The first stage was carried on site by stretches of 3 meter in core length weighting about 15-20 kg were treated at a time. The treatment began with precise weighting (2 g) followed by washing of the stiff clayey matrix before wet sieving at 2 mm and concentration for the dense mineral according the Milner Methods. Initial weight and sample processing data are presented in Appendix III. The concentrates was then examined visually for extraction of visible gold and the remaining dark sand was stored in plastic bags for drying before submission to laboratory assay.

Washing of clay

The washing was done by putting the material in a 2.5 meters tall container and washing the material with a high pressure water jet. The light elements would flow out of the container with the water while the heavier fragments and minerals would stay in it. The pressure is provided by a 2600 PSI pressure pump. This pump is built on a 6.5 force motor and can pump up to 9 litres per minute. This device was installed close to a beaver dam on the property to give a water access point and hoses allowed to bring water up to the drilling sites. A water gun adjusts or closes the water pressure and flow.

Sieving and panning

Once the clay is washed, the container was put over a 2 mm sieve and the material was poured onto the sieve. The steel batae placed under the sieve would receive anything passing material. The sieve was looked at for visible coarse gold nuggets. Density separation was then done with the batae until a sufficient heavy mineral concentrate was made. The concentrate weight is about 250 grams. This represents a concentration factor of about 100x. The light minerals and the coarse material (>2mm) are then bagged for later analysis. During each steps, high pressure water jet was used to clean the used tools to prevent cross contamination.

Visible gold in the heavy minerals concentrate would be put in small bags and the concentrate would be sampled for gold and multi-element chemical assay. Every gold grain was then inspected at UQAM's Scanning Electron Microscope to determine their morphology, their

dimension, their composition and association, which allow some more interpretation about the source of the gold.

Lithogeochemical sampling

Coring of fractured bedrock allow direct sampling for lithogeochemical analysis. From one to four of these samples, about 1 kg each, were taken from the fresh and altered bedrock in every sonic borehole. They were identified and sampled in plastic bags for shipment to analytical laboratory for their gold, trace element and major element geochemistry.

Scanning Electron Microscopy analysis

The gold grains were put on small sticky 1 inch plates that can be installed in the Scanning Electron Microscope (SEM) at University of Quebec in Montréal. A plate can hold about 10 grains but we made sure that a plate would only hold grains from a single hole. Some more grains were analysed to know their compositions since we were unsure of their mineralogy. Réal Lapointe was the qualified technician who used the SEM. The SEM allowed the visualization of the morphology, the dimension and the composition of the nuggets. The morphology of the nuggets is evaluated from the overall look of the grains. We wanted to distinguish pristine versus transformed gold grains to evaluate their transport from source. The dimensions are directly given by a scale on the screen and pictures. It is to note that the thickness of a grain is harder to evaluate since we don't have a perpendicular view of the thickness. However, it is possible to make a good estimation of it. The composition of a grain is given with a tool that analyse the different electron response from their interaction with a mineral. Software then estimates the best correspondence between the electron response and the usual response of the natural elements. Some elements have similar response and could be confused. However, the experience of the technician and the expected results greatly reduce any confusion possible in the interpretation of the composition of a grain. We looked for the silver content of the nuggets to determine the alteration they went through. Finally, any association between gold and any other mineral assemblage on the gold grain was noted. A nugget would take about 10 minutes of SEM observation. Digital pictures were then taken and put online for downloads and further analysis.

Laboratory assay

Fresh and altered bedrock samples and dense mineral concentrates (after visible gold removal) were shipped to ALS-Chemex laboratory of Val-d'Or for chemical assay. These were submitted to pulverisation and gold determination by fire assay Au-AA23 on 30 grams and multi element ICP analysis ME-MS61 including 48 additional element as follow : Ag, Al, As, Ba, Be, Bi, Ca, Cd, Ce, Co, Cr, Cs, Cu, Fe, Ga, Ge, Hf, In, K, La, Li, Mg, Mn, Mo, Na, Nb, Ni, P, Pb, Rb, Re, S, Sb, Sc, Se, Sn, Sr, Ta, Te, Th, Ti, Tl, U, V, W, Y, Zn, Zr. Rock samples were also submitted to whole rock analysis by XRF methods.

Results

The sonic drilling of early 2011 intersected four sedimentary units in addition to fresh bedrock (appendix II and Figure 4). From top to bottom, the four sedimentary units are as follow (1) grey to bluish grey silty upper diamict, (2) laminated silt-clay to fine sand or rythmite (3) brownish, clayey lower diamict and (4) brownish clayey alterite or saprolite (Figure 5). The bedrock presents dark pyritic slate or shale alternating with light grey volcanic layers, which correspond to the Saint-Victor Formation.

Sedimentological observations

The upper diamict (Unit 1) is generally massive to fissile and included from 5% to 50% sub angular to angular clasts in a dominant silty matrix. Its color varied from grey to blue grey but this unit also included brownish zones. In sonic holes G60-S01, G65-S01 and G65-S02, this unit includes laminated to massive sand of unit (2) at depth from 2 to 5 meters (Figure 4). Most of unit 2, however forms thick rhythmic sequence (up to 10 m) of laminated to finely laminated (Figure 5) silt to silt clay alternating with fine sands perfectly preserved in sonic core. In most occurrences, the upper part of the laminae of unit 2 are folded or contorted. In contrast their basal contact are neat and “comfortable” over unit 3. Unit 3 is a massive to marbled diamict dominated by angular to sub-angular clasts in a clay rich matrix. Its color varied from brown to beige but may also included dark blue to grey zones. Most clasts are surrounded by a thin clay layer, one striated clast and one serpentinite cobbles were observed in this unit.

Sonic Drilling 2011
Rivière Gilbert Project
Uragold Bay Resources Inc.

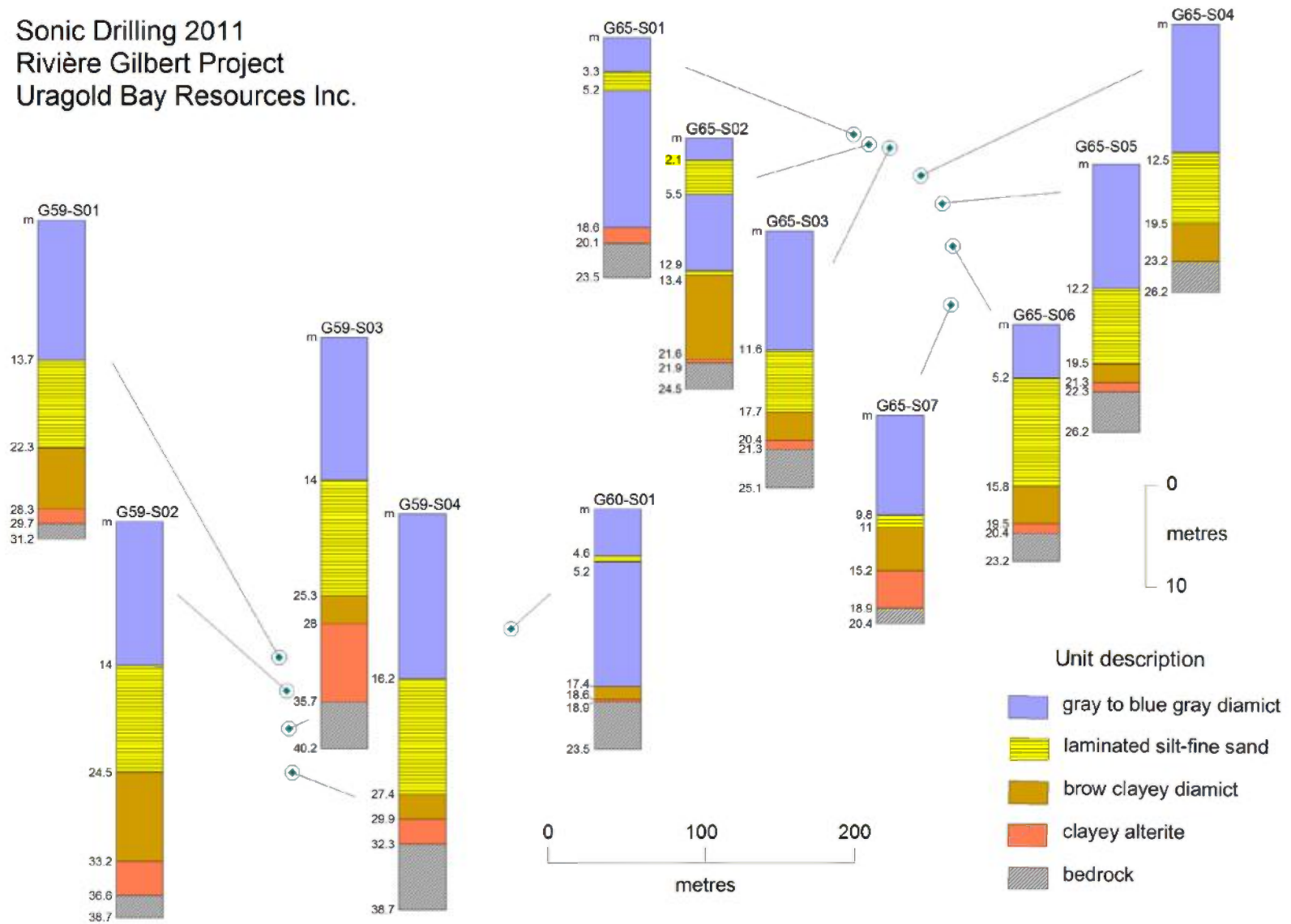


Figure 4. Graphical sections from sonic cores



Figure 5. Pictures of sedimentary units. From top left to lower right : Detail of the grey silty diamict (Unit 1), finely laminated silt and fine sand (unit 2), cores and detail of the brown clayey diamict (unit 3), brownish beige alterite (unit 4) and its underlying bedrock.

Unit 3 corresponds to the previously described gold bearing unit described as a “brown gravel” (Gilbert 1986) because RC drilling does not allow the recovery of the clay. The last unconsolidated deposit (unit 4) also described as a brown clayey diamict and shows a very diffuse transitional contact with the overlying diamict. Its presence is obvious in hole G59-S02 where it preserved a crude layering also observed in the underlying bedrock. Unit 3 and unit 4 were also previously described as clay rich diamict from former sonic drill core by the Geological Survey of Canada (Shilts and Smith 1986).

Visible gold results

Treatment of the clayey basal till (unit 3) and underlying saprolite (unit 4) allowed the recovery of 23 mineral grains, mostly gold, to be further analysed by SEM (Appendix III). In turn, no coarse gold was observed in the 2 mm sieve. The recovered gold grains show complex fragile shapes with some hammering forming more compact shapes (Figure 6). Their sizes varied from 100 microns to 1-2 millimetres, which constitute coarse gold grains

Scanning electron microscopy (SEM) analysis.

Electron microscopy imagery and analysis confirm the recovery of 17 gold grains (Table 5). This technique allowed detailed examination of morphology, dimension, composition and mineral association of gold. In addition to the complexity of shapes observed visually and under binocular, SEM reveal a porous surface coupled with pure gold on most grain surface (Appendix IV). A few occurrence of flattened surface (as opposed to pitted surface) reveal a silver content up to 30%. Detailed measurements allow the calculation of grain volume which was used to estimate the total weight in milligrams (mg) for each sonic hole, as reported in table 5. Finally, the gold were found in mineral association with mostly iron oxides or limonite, clay minerals and minor quartz, as revealed by analysis of the inclusion observed on grain surface (Figure 6).

Table 5. Visible gold results. A total of 17 gold grains were confirmed by SEM.

Hole number	Nb of gold grains	Remark	Weight (mg)
G59-S01	3		12.62
G59-S02	1	small	0.06
G59-S03	1	in alterite	0.68
G59-S04	2		17.2
G65-S03	2		0.35
G65-S04	7		21.62
G65-S05	1		0.02

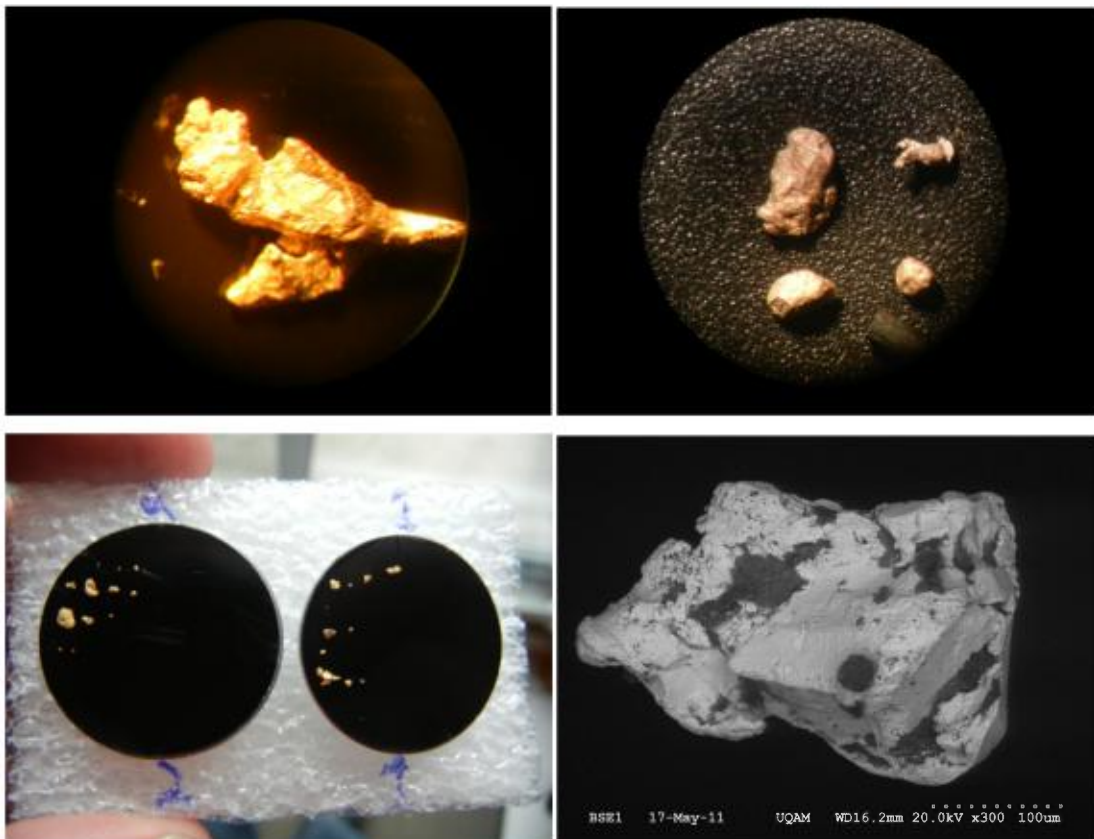


Figure 6. Image of gold grains. From top left to lower right : (1) coarse grain of complex fragile shape gold (2) four grains from complex to compact shape with hammering of one extremity of the top right grain, (3) mounting of 23 candidates grains for SEM examination and (4) SEM view of a gold grains with dark inclusions of lighter minerals.

Dense fraction assay results

Analysis of dense mineral concentrate revealed no significant gold content except in sample G65-S04-01 with 590 ppb Au and sample G59-S01-01 with 109 ppb Au (Appendix V). These two sonic holes also returned abundant visible gold (Table 5). Some of the concentrate show very high chromium content (>1000 ppm Cr) for the basal diamict unit which is consistent with the presence of serpentinite in clast lithology. Both tracers are likely derived from the ophiolite belt of the Québec Appalachians which occur at about 10 km north of *Rivière* Gilbert. Gold in the basal diamict is geochemically associated with its pathfinders including up to 580 ppm W, 135 ppm As, 48 ppm Bi and 8 ppm Sb, suggesting a local derivation.

Bedrock assay results

Analytical results for bedrock samples are presented in Appendix VI. The second column of appendix VI gives the number of the sonic borehole from which they were taken. A single significant results of 107 ppb Au arose in sample RG11-004 from a fresh grey mudstone collected from local bedrock exposed in sonic hole G59-S03 cores. This samples is also rich is Fe, S, Bi and Sn.

Discussion

Origin of the sedimentary units.

The grey silty diamict and the brown clayey diamict are of glacial origin as indicate by their massive, locally fissile structure and their dominantly angular to sub-angular clasts including lithology of distant derivation. According to Shilts and Smith (1986, 1988) the upper silty diamict may correspond to a complex of three till, intermixed without preservation of the interstadial sediment. The rythmite sequence (Unit 2) must correspond to glaciolacustrine sedimentation which was later overrided, deformed and partly incorporated by the glacial event or glacial events responsible for the upper till complex.

The lower diamicts are of special interest because they host the gold. The high clay content of unit 3 derives from the direct entrainment and incorporation of the underlying diamict (unit 4), which in turn, results from deep chemical alteration of the bedrock. The glacial origin of the lower brown diamict of unit 3 is further supported by the occurrence of one striated clasts and a southeastward component of glacial transport is suggested by one serpentine cobble and anomalous Cr content in its dense mineral concentrate. A poor diversity of clast lithology, a high gold content and the dominance of local angular clasts suggest a short distance of transport for this till (glacial deposit).

Stratigraphic Assignment

Our work on the *Rivière Gilbert* confirms previous description of the clayey basal unit and of the stratigraphy of the valley (Shilts and Smith 1986, 1988). The clay rich lower till derives directly from the glacial incorporation of the underlying deep alteration profile which was attributed to the Tertiary Period based on warm climate necessary to explain the clay composition (Shilts and Smith 1988). This may indicate an old age for the alterite unit and the basal till, although the latter may have been reworked and refreshed by subsequent glacial invasion. Accordingly the age of the rythmites may be significantly younger and may represent the onset of the Johnville glaciations. Thus, the base of the upper till may correspond to the Johnville till having incorporated the underlying Rythmites. The upper till may thus the result of multiple ice movement (Shilts and Smith 1986, 1988) and are correlated with the Johnville, Chaudiere, and Lennoxville tills. The thin layer of laminated sand we encounter from 2 to 5 metres of depth in holes G60-S01, G65-S01 and G65-S01 (figure 6) may correspond to one of these interstadial periods, more likely the Gayhurst, but in the absence of organic material, the sorted unit may have been created by subglacial running water. Of course the above discussion is tentative and direct measurement by any dating methods would be of great help in deciphering the genesis for the complex stratigraphy of the *Rivière Gilbert* Valey.

Inference on gold source

Medium to coarse grain of native gold (0.2 to 1.5 mm) were found in the basal till and alterite (saprolite) units. Also, since almost no gold was revealed by chemical assay on the dense mineral concentrate it must be concluded that all the gold in the till unit was medium to coarse gold as visible grain. A similar result is reported by Gilbert (1988) where no important gold content arose from amalgamation of the fine fraction of the dense mineral concentrate. This emphasizes the importance of the nugget effect when an attempt is made to evaluate the gold content of the auriferous sedimentary units presents on the property. As an example, only three holes contained about 97% of the total mass of gold encounters in the present sonic campaign (Table 5).

SEM examination allowed us to reconstitute some important stages in the development of the auriferous units. The complex, fragile shape of some grains revealed us that the grains went through only small transport by glacier. Some very pristine grains let us think that the gold grains were still in their source rock after transport. Porosity and low silver content mean that the grains went through alteration. This phase should correspond to the deep chemical alteration that affect the upper metres of the bedrock surface and produce abundant clay. Also, the mineral associations of the gold grains revealed by SEM analysis of inclusion show quartz, clay and iron oxide probably after sulphides. These, in combination with As, W and Bi anomaly in dense mineral suggest that the source could probably be the networks of small pyritic quartz veins that went through alteration after erosion and transport in till. This tends to confirm an old explanation that many workers of the area went through (Charbonneau 2005). That system is partly intersected by our drilling and should underlie the property since it should parallel the trace of the placer and the Gilbert River Valley, as mapped previously (Seeber 1961, Gilbert 1986, 1987 and 1988).

Mineralogical observations made during panning (Appendix III) show an association of visible gold with presence of coarse (2mm) automorphous pyrite. The coarse pyrite would usually correspond to 10-20% of the concentrate when it is present. Fine and fresh pyrite was present in all tills and does not show any association with gold. The local bedrock is made of folded layers of pyritic black

slate and volcanoclastic rocks. The anomalous rock sample of hole G59-S03 with 106 ppb Au could correspond to an alteration envelope in the black shale unit. Again, the high content in S, Fe, Bi and W in that sample indicates an association of gold with sulfides and hydrothermal veining. It is believed that the original gold deposit would correspond to a zone containing coarse pyrite with quartz veins in the volcanoclastic or the black shale unit. An alteration envelope should be present around such a hydrothermal system and would result in anomalous or low grade gold values around the coarse gold deposit. The mineralized system should be close to the property and could be parallel to the Gilbert River valley since its till have a high gold content. Such coarse gold deposit with low grade gold envelope is present in the region on the Bellechasse property of Golden Hopes Mines (Avramchev *et al.* 1987). These inferences in combination with the local nature and northwest derivation of lower gold bearing till suggest a proximal source under or slightly northeast of the actual placer.

Inference on volume estimates

The present drilling results and gold recovery can be used to comment on a previous estimation of volume by Gilbert 1988. Gilbert evaluate an exploration target for the basal oxidized unit by the polygon methods surrounding each drill hole that returned significant grade > 0.3 gram gold per cubic meter. This results in a fairly continuous layer extending over more than 3 km in length and 50 to 75 m in width. Its thickness ranging from 2 to 12 meters and it is buried below 15 to 25 metres of more recent sediments including the rythmites and the upper till complex. However, we noticed that Gilbert 1988 estimate include a correction of gold grade attributed to material loss imply by his drilling method. He then considered missing sediment as a potential loss of gold and increase gold grade according to its recovery factor. However observation of sonic core show a high proportion of clay (20% to 40%) which was probably lost in suspension in pressurized water imply in RC drilling used by Gilbert. According to our re-interpretation of historical data, the lost clay fraction does not hold any gold and if the correction factor is removed from Gilbert calculation the estimate is significantly reduced. However, reinterpretation of the

lower clayey diamict as a glacial deposit instead of alluvium, imply a better continuity and a wider auriferous body. In addition, the actual property host the northeast extension of the placer (claims # 2179342, 2360598 and 2360599) which was partly drilled by Gilbert 1988 to present comparable gold content, although this remained to be confirmed by sonic drilling.

However, above all these considerations is the nugget effect that appears to be a dominant factor in the present context. The recent acquisition of the historical production by the Beauce Placers Co reveals a total 56 000 oz Gold which is significantly higher than previous estimates of 6000 oz Gold, base on available gold content from 0.3 to 0.6 g Au per cubic meters. The drag line and dredging operation of this company from 1959 to 1961 imply a total volume of 8.6 million of cubic yards with a gold content of 0.2 g Au / cubic yard, which includes the treatment of the younger units. If the recovered gold is entirely applied to the basal units, this would correspond to a significantly higher concentration around 2 g / cubic yard. The 10 fold discrepancy can be attributed to the presence of coarse gold. In fact, accompanying pictures of the produces gold show a predominance of gold nuggets (5 to 20 mm) within the production, if we assume that these pictures show a representative population of the extracted gold. It is thus clear that bulk sampling is required to evaluate the real gold concentration in the buried auriferous till.

Conclusions

The drilling of twelve sonic drill holes allowed the intact coring of the sedimentary and till units of the Gilbert River. From top to bottom, the unconsolidated sedimentary units are as follow : (1) a thick grey to blue grey silty diamict (8-12 m thick) interpreted as the upper till complex, (2) a laminated silt to fine sand unit (8-10 m thick) corresponding to glacio lacustrine rythmite, (3) a brownish clayey basal diamict (2-3 m thick) which is gold bearing and correspond to the lower till, and, finally, (4) a clayey brown diamict (1-3 m thick) which is also auriferous and represent a deep alteration profile of the bedrock. The sonic also allows coring of black slate and volcanoclastics of the local bedrock belonging to the Beauceville Formation.

Treatment of the lower till and alterite for gold extraction results in the recovery of 17 gold grains of medium to coarse size (0.2 to 2 mm). Chemical assay apply to the remaining dense mineral fraction do not returned high gold content which show that no gold was present in the fine fraction. SEM examination of gold grains reveal (1) complex and fragile shape, (2) pitted surface made of pure gold and more regular surface with up to 30% silver, (3) inclusion of quartz, clay and iron oxide with the gold. Gold grains characteristic and sedimentological observation of the lower till suggest a close proximity to the bedrock source. The clay-quartz-iron oxyde assemblage on gold grains and geochemical association with As W and Bi indicates that the original deposit may correspond to coarse gold present in sulphides-quartz veins. Past production of 56 000 oz Gold suggest that sparse gold nugget (5-20 mm), which as few chance to be intersected in drilling, may produce a significantly higher gold content that our present estimates, which seem to be an extreme case of the nugget effect, requiring large bulk sampling.

Recommendations

- Bulk sampling is required to properly evaluate the gold content of the gold bearing basal units since the nugget effect appear to have a major impact on gold grades.
- Additional sonic drilling should be applied to the northeast part of the claims.
- The bedrock of the Gilbert River valley should be further investigated since it is likely to host the source of the gold.



A handwritten signature in black ink, appearing to read "Rémi", followed by a large, stylized flourish.

Rémi Charbonneau

Ph.D. P.Geol.

OGQ

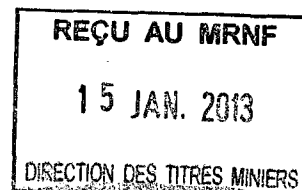
A handwritten signature in black ink, appearing to read "Steven Lauzier", with a large, stylized flourish.

Steven Lauzier

Géologue, Probation.

OGQ #1430

January 10th, 2013



1267993

References

- Avramtchev, L., St-Julien, P., Slivitsky, A., Vallière, A. et Globensky, Y., 1987,** *Carte des gîtes minéraux des Appalaches, région des Basses-Terres du Saint-Laurent et Estrie Beauce; Ministère des Ressources Naturelles, DV 87-19, carte 2060 au 1:250 000.*
- Chabot, F., 1989,** *Étude et formation de l'or en placer de la région de Beauceville, Québec; Université Laval, mémoire de Maîtrise non publiée, 106 p.*
- Charbonneau R., et Gaucher, E., 1993,** *Géologie glaciaire et blocs minéralisés sur la propriété Rapides du Diable; Geosig inc pour Rod Mainville, Prospecteur, GM 52449, 25 p.*
- Charbonneau, R., 1997,** *Propriété Saint-Gustave 1997-A; Consultants Inlandsis pour Peter Mrakic, Prospecteur, GM55553, 29 p.*
- Charbonneau, R., 2005,** *Rapport d'excavation et d'examen minéralogique de la roche de fond au projet TIMROD, travaux de 2004; Inlandsis senc pour Rod Mainville et Tim Burton Prospecteurs, GM61702, 30 p. 2 cartes.*
- Chauvin, L., Martineau, G. and LaSalle, P., 1985,** *Deglaciation of the lower St. Lawrence region, Quebec; Geological Society of America, Special Paper 197, p. 111-123.*
- Cirkel, F., 1911,** *Alluvial gold deposits in Quebec; The engineering and mining journal, p. 1035-1038*
- Cousineau, P.A., 1984,** *La Formation de Saint-Daniel et le Groupe de Magog entre Saint-George de Beauce et Lac-Etchemin; Ministère de l'Énergie et des Ressources, MB 84-09.*
- Gélinas, P., Locat, J., Gilbert, F., Belzile M. C. and Gagnon J. 1985,** *Études sur les placers d'or de la région de Beauceville. Prepared for the Coniagas Mines Ltd., GM42308, 158 p. 8 cartes.*
- Gilbert, F.D., 1986,** *Propriété de la Seigneurie Saint-François; Groupe Conseil Roche inc., et G.R.E.G.I. (U. Laval) pour Les Gisement d'Or de la Chaudière Ltée (filiale de Coniagas Mines ltd.), GM42988, 300 p. 37 cartes.*
- Gilbert, F.D., 1987,** *Propriété rivière Gilbert AL0699; Coniagas Mines Ltd, GM44862, 83 p. 3 plans*
- Gilbert, F.D., 1988,** *Rapport d'un levé de sismique réfraction, d'une campagne de sondage à circulation inversée avec 38 journaux des trous G-49-1 A 6, G-53-2 A 4, G-55-1 A 5, G-59-2 A 5, G-64-1 & 3, G-66-1 A 3, G-68-1 & 2, G-80A-1 A 5, G-80B-1 A 6 ET GIR-1 & 2 et évaluation des réserves; Université Laval pour Coniagas Mines ltd., GM46544, pages 1 à 28. 37 cartes.*

- Laforest, A. 1987**, *Levé de sismique-réfraction, région de la Beauce, Projet HGE-87-251-1; Les Consultants H.G.E. inc. pour Ressources Macamic ltd.*, GM46544, p. 29-50
- Lamothe, M., (ed), 1989**, Stratigraphie du Pléistocène du Québec méridional; Geological Association of Canada-Mineralogical Association of Canada, Annual Joint Meeting, Field Trip Guidebook A1, 118 p.
- LaSalle, P., 1984**, Quaternary Stratigraphy of Québec: a review; in Fulton, R.J. (ed), Quaternary Stratigraphy of Canada - A Canadian Contribution to IGCP Project 24, Geological Survey of Canada, Paper 84-10, p. 155-171.
- LaSalle, P., 1992**, *L'or dans les sédiments meubles: formation des placers, extraction et occurrences dans le sud du Québec; Ministère de l'Énergie et des Ressources, DPV-745, 23p.*
- McDonald, B.C., and Shilts, W.W., 1971**, Quaternary Stratigraphy and events in Southeastern Québec; Geological Society of America Bulletin, v. 82, p. 683-698.
- Obalski, J., 1898**, *Or dans la province de Québec; Département de la Colonisation et des Mines, AP-1898, 96 p. 1 carte.*
- Prest, V.K., Grant, D.R. and Rampton, V.N., 1967**, Glacial Map of Canada; Geological Survey of Canada, Map 1253A, scale 1 :5 000 000.
- Rameseder, B., 2001**, *Caractérisation des placers aurifères de l'Estrie, Québec et le rôle de la dispersion glaciaire dans leur formation; Université du Québec à Montréal, mémoire de Maîtrise non publiée, 129 p.*
- Rose, H.A., 1959**, Report on exploratory drilling operations on the Gilbert River area, Beauce; Beauce Placer Ltd, GM08785, 7 p.
- Seeber, O.A., 1961**, Evaluation report of the property gold potential; Beauce Placer ltd., GM11010, 17 p.

- Shilts, W.W., and Smith, S.L., 1986**, Stratigraphy of placer gold deposits: overburden drilling in Chaudière Valley, Quebec; Geological Survey of Canada, Paper 86-1A, p. 703-712.
- Shilts, W.W., and Smith, S.L., 1988**, Glacial geology and overburden drilling in prospecting for buried gold placer deposits, southeastern Québec, *in* P. Rogers, ed., Prospecting in areas of glaciated terrain—1988: CIM-IMM, Geology Division of Canadian Institute of Mining and Metallurgy, p. 141–169.
- Klassen, R.A. and Thompson F.J., 1993**, Glacial history, drift composition, and mineral exploration, central Labrador; Geological Survey of Canada, bulletin 435, 76 p.

Appendix I - Assessment Reports

Reference	Exploration works	Results
Obalski, 1898, Quebec Bureau of Mines	1835-1885 Following the discovery of a gold nugget in the Gilbert River, marked the onset of the first gold rush in Canada. The first concessions were granted in 1846 and the activity peaked from 1875 to 1885 during which an average of 500 miners were employed in the Gilbert River.	Main operators included the Chaudiere Mining Co., J. Douglas, Poulin Bros., DeLery Gold Mining Co., W. Lockwood, Reciprocity Co., St.-Onge Bros. Ainsworth Co., Beauce Mining and Milling Co., Canada Gold Co., McArthur Bros., Ltd, and the American Gold Mining Co. Richest deposits were found in the Gilbert River and its tributaries, in a stretch along 3 km S and SE of Saint-Simon-les-Mines.
Cirkel, F., 1911, Champs d'Or Rigaud Vaudreuil Ltd.	Exploration works to determine the thickness and gold content of alluvial deposits in the upper Gilbert River, the La Plante River and Des Meules Creek. Keystone and Empire drills were used for the first time.	Mining operations on Des Meules Creek were developed by the installation of a Hydraulic plant of a capacity of 2500 cubic yards per day. Two clean-up operations were reported: 1st clean up: 2600 cubic yard @ 36¢; 2nd clean up: 16 000 cubic yard @ 42¢.
Rose 1959, New York-Alaska for Beauce Placer Mining Co. Ltd. GM08785	Churn drilling (percussion) on the NE Branch of Gilbert River.	Measurable quantities of gold were recovered in 81 holes, of 173 drilled at the moment this report was written. Gold was coarse and in a number of holes, small nuggets were found.
Seeber 1961, Beauce Placer Mining Co. Ltd. GM11010	Assessment of the Gold potential of the Property. The 1958-1959 drilling program consisted of 252 holes for a total of 4700 m (15 402.2 ft) that were drilled to estimate the ore reserves. Dredging operations. The start of the dredge was 6.5 km (4 miles) upstream the Chaudière River, on the NE Branch of Gilbert River. It could dig 15 m (50 ft) deep below pond level.	A value of 16 976 153 cubic yardage at 22.24 ¢ was calculated. Economic considerations, examination of the mining method to be used confirmed that dredging operations are valid in the NE Branch of Gilbert River. Dredging could dig 15 m (50 ft) deep below pond level. Maximum bucket discharge was 34 buckets/minute. Barren overburden was stripped using a 6 cubic yard electric dragline equipped with a 45.7 (150 ft) boom.
Shilts and Smith 1986, GCC	RC drilling in the upper Chaudière Rvier valley to study the stratigraphy of placer gold deposits. 24 RC holes totalling 1091 m.	Three samples from Windsor-2, Winsor-3 and Chevrefils Showings returned from 1 to 2.2 g/t Au

Appendix I - Assessment Reports

Reference	Exploration works	Results
Gilbert 1986, Coniagas Mines Ltd . (in collaboration with dpt. Geology U of Laval), GM 42988	Prospection sampling, trenching, panning, granulometric and petrographical studies, geochemical survey (848 samples, total) and a RC-drilling program (40 holes totalling 1288.1 m).	Gilbert River paleo-channel is the most promising gold deposit. Drilling program established volumes and contents stretching about 6.5 km along the Gilbert River channel. Contents vary considerably but according to calculs (3 sections): 1, 802, 290 cubic m of gold bearing gravel with an average content of 0.775 gr/m ³ for a total of 1 396 772 g (45 057 ounces). The paleo-channel dimensions ranges in width from 50 to 200 m, with a thickness between 1 and 15 m. It is generally overlain by 25 m of glacial material. Additional resources might be calculated over 3 other occurrences.
Gilbert 1988, Macamic Resources Inc., GM46544	38 RC-holes in the Gilbert River Valley (920.3 m).	New evaluation of gold contents (1985) resulted in a volume of 491 850 m ³ with a gold content of 1.76 (g/m ³). 6 922 ounces of gold could be extracted.
Laforest 1988, Macamic Resources Inc, GM46544	Geophysical survey (seismic refraction; 1.2 km)	Delimitation of burried preglacial valley

Appendix II – Descriptive logs

Descripteur - Used descriptors

D : Diamicton = diamict

CX : Cailloux = clast

S-A : Silto-Argileux = silt clay matrix

B : Brun = brown

G : Gris = grey

M – msf = massif = massive

C : compact = compact

TC : Très Compact = very compact

Plq = plastique = plastic

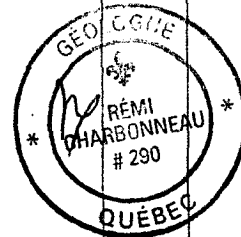
MS = schiste ardoisier = shistose mudstone

HOLE NO

G59-S01

DATE 24 février 2011

Profondeur (pieds)	Échantillons	Description	gl	ca	litho %	hrs	stage
0		Diamicton : 20-30% Cailloux (CX) ; silteux-argileux (S-A) ; brun(B) à gris-bleuté ; compact (C) à très compact (TC)					
5.5		Horizons d'un sol sur un diamicton bleu Diamicton bleuté S-A ; C ; 20% CX					
17.5		Diamicton B silteux ; C ; 30% CX					
20							
32		Diamicton B silteux ; TC ; 30-40% CX					
37		Sable					
37.5		Diamicton gris ; S-A ; C ; 20-30% CX					
40							
45		Contact transitionnel déformé. Sédiments Sable gris-vert ; compact					
57		Silt ; compact ; vert-gris					
60							
69		Argiles ; compactes ; grises Matière organique dans des lamines de 2mm. À 71'					
74		Diamicton brun-orangé ; 30-40% CX ; silteux à argileux ; C					
74.5		Horizon B sur un diamicton					
80		Diamicton brun-orangé ; 30-40% CX ; silteux à argileux ; C					
90		Diamicton gris-brun orangé jusqu'à diamicton gris					
93							
93.5		Régolithe					
97.5		Sable silteux gris-blanc					
100		Morceaux de roches altérés ; argiles ; oxides (10%) ; beige-brun					
102							
102.5		Roc fracturé Shales noirs ; aspect de brèche avec trSu gf diss. Des zones sont plus altérées et oxides. VNQZ présente. Roches volcaniques avec grains mm de Pg-Fp? Un dike ?					
120							



Remi Charbonneau

REÇU AU MRNF
15 JAN. 2013
DIRECTION DES TITRES MINIERS

1267993

HOLE NO

G59-S02a

DATE 25 février 2011

Profondeur (pieds)	Échantillons	Description	gl	ca	litho %	hrs	stage
0		Diamicton : 15-30% Cailloux (CX) ; silteux-argileux (S-A) ; bleuté à gris-brun ; compact (C) à très compact (TC)					
7		Horizons d'un sol sur un diamicton bleuté Diamicton bleuté silto-argileux; C ; 15-20% CX					
20							
22.5		Diamicton gris-brun ; C ; Silto-argileux ; 15-20% CX					
26.3		Diamicton B silteux ; TC ; 30% CX					
32.5		Diamicton brun ; S-A ; C ; 25-30% CX ; + friable					
40							
46		Sédiments Sable; structure presents ; compact ; 2% cailloux ; peut-être zone de mélange. Lamines à 56'					
57		Silt ; structures presents partout ; compact Laminations à 59.5' ; Lamines de M.O. 2mm à 69.5'					
74.5		Argiles ; T-C ; lamines visibles partout					
80							
80.5		Diamicton brun-orangé à gris-brun; 40-70% CX ; silteux à argileux, avec passes sableuses ; C					
83							
86		Diamicton brun-orangé ; 40% CX ; silto-argileux ; C Zone silto-sableuse					
94		Zone 60-70% CX, une partie est lavée par le forage					
97							
99							
100		Diamicton brun-gris, 40% CX, silto-argileux ; C					
102		Diamicton avec cailloux de régolite. 40% CX. Silto-argileux ; C					
109							
110		Régolite Zone sableuse Roc pourrie : non-reconnaissable. Ox, Arg					
120							



Remi Charbonneau
Stéphan

HOLE NO

G59-S03a

DATE 25 février 2011

Profondeur (pieds)	Échantillons	Description	gl	ca	litho %	hrs	stage
0		Diamicton : 10-30% Cailloux (CX) ; silteux-argileux (S-A) ; bleuté à brun-orange ; compact (C) à très compact (TC)					
8		Horizons d'un sol sur un diamicton bleuté Diamicton bleuté silto-argileux; C ; 10-15% CX					
18		Diamicton gris-brun ; C ; Silto-argileux ; 30%CX					
20							
39		Sable					
40		Diamicton brun-orangé ; S-A ; TC ; 30% CX ; + friable					
46		Sédiments Sable brun ; structure présentes ; compact ; <1% CX ; peu de structures. Lamines à 53' Structures sédimentaires à 66'					
60							
68.5		Silt brun-gris ; structures lamines partout ; compact					
77		Argiles grises ; T-C ; lamines 2mm visibles partout					
80							
83		Diamicton brun-orangé ; TC ; 40%CX ; S-A					
92		Régolite					
93		Zone sableuse					
97		Roc altéré et fracturé : oxides de fer, argiles, pourrie					
117		Roc frais : shale noir.					
120							



Rémi Charbonneau
Stu van

HOLE NO

G59-S04a

DATE 25 février 2011

Profondeur (pieds)	Échantillons	Description	gl	ca	litho %	hrs	stage
0		Diamicton : 10-30% Cailloux (CX) ; silteux-argileux (S-A) ; bleuté à brun-orange ; compact (C) à très compact (TC)					
8		Horizons d'un sol sur un diamicton bleuté Diamicton bleuté silto-argileux; C ; 10-15% CX					
18		Diamicton gris-brun ; C ; Silto-argileux ; 30%CX					
39		Sable					
40		Diamicton brun-orangé ; S-A ; TC ; 30% CX ; + friable					
46		Sédiments Sable brun ; structure présentes ; compact ; <1% CX ; peu de structures. Lamines à 53' Structures sédimentaires à 66'					
60							
68.5		Silt brun-gris ; structures lamines partout ; compact					
77		Argiles grises ; T-C ; lamines 2mm visibles partout					
80							
83		Diamicton brun-orangé ; TC ; 40%CX ; S-A					
92		Régolite					
93		Zone sableuse					
97		Roc altéré et fracturé : oxides de fer, argiles, pourrie					
117		Roc frais : shale noir.					
120							



Remi [Signature]

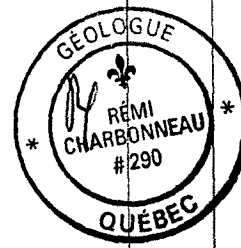
[Signature]

HOLE NO

G60-S01

DATE 4 mars 2011

Profondeur (pieds)	Échantillons	Description	gl	ca	litho %	hrs	stage
0		Diamicton perturbé ; remblais					
5		D gris ; S ; C ; 5% CX de mudstone jaune, SA (voir photo)					
10		Diamicton (D) brun ; gris à brun-orangé ; Silteux (S) ; tr à 35% cailloux (CX) ; très compact (TC)					
		D gris-bleuté ; S ; TC ; plq ; tr%CX					
20		D brun ; S ; TC ; plq ; 25%CX					
		D gris ; S ; TC ; plq ; 30%CX					
		D brun ; S ; TC ; plq ; 30%CX					
		D gris ; S ; sec ; bloc altéré					
40		D brun à orangé ; Silto-argileux , C ; plq ; 35% CX					
		Saprolite					
50		Dm sec = sap de schiste gris; silteux ; 100% MS ; comme le bloc à 51-56 pieds = Float dans le till ou encore une laterite développé dans le till. — presence de clastes avec bordure nette non altéré. Suggère un till très induré mais gris pale à peine beige.					
60		Roc					
		Roc fracturé schiste ardoisier gris à gris-pâle.					
77							



Rémi Charbonneau

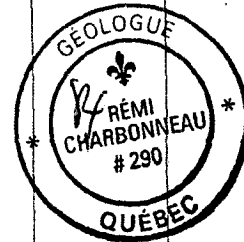
Stuart

HOLE NO

G65-S01

DATE 26 février 2011

Profondeur (pieds)	Échantillons	Description	gl	ca	litho %	hrs	stage
0		Diamicton gris compact (C) ; 20-30% Cailloux (CX) ; silto-argileux (S-A)					
11		Sable gris peu compact ; lamines présentes.					
17							
20		Diamicton gris ; compact ; sableux à silto-argileux ; 30-50% CX ; pyrite <1mm présente, faces visibles; beaucoup de Diamicton gris ; silto-sableux ; C ; trPY gf <1/2mm. Faces de PY visibles.					
27							
31		Diamicton gris; S-A; C Py gf <1/2mm Diamicton gris; silto-sableux; C PY gf <1/2mm					
39							
40		Diamicton gris ; S-A ; C; PY gf <1/2mm					
42		Diamicton gris ; Silto-sableux ; C; PY gf <1/2mm					
58							
60		Diamicton gris;S-A;PY gf <1/2mm 50%CX C à TC					
61		Réolite					
64		Sable grossier					
66		Roc pourrie : altéré et fracturé					
76		Roc frais : shale noir 2%PY blanche gf diss					
77							



Memo

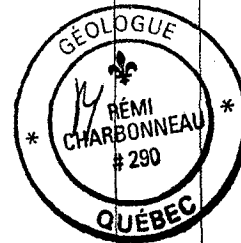
St Louis

HOLE NO

G65-S02

DATE 26 février 2011

Profondeur (pieds)	Échantillons	Description					
			gl	ca	litho %	hrs	stage
0		Diamicton (D) brun-gris (BG) à gris (G) ; 20%Cailloux					
2		(CX) ; Compact (C) ; Silteux (S) à Silto-Argileux (S-A)					
4		Horizons de sol					
		D ; BG ; S ; 20%CX ; C					
7		D ; BG ; S-A ; 30%CX ; C					
		Sable					
		Sable grossier C.					
16		Un bloc est au contact					
18		Sable moyen C					
		Diamicton gris 20-30%CX ; S à S-A ; C					
20		D ; S ; gris ; 20%CX de 5mm ou plus gros (<5%). C					
24		D ; S-A ; gris ; 20%CX ; C					
28		D ; S-A ; gris ; 10%CX de 5mm ; C ; plus argileux					
29		D ; S-A ; gris ; 30%CX ; C					
31		D ; S-A ; gris ; 10-15%CX de 5mm ; C ; plus argileux					
33		D ; S-A ; gris ; 15%CX ; C					
37		D ; S-A ; gris ; 30%CX ; C					
40							
42.5		Silts grossier gris-brun-vert très pure.					
44		Diamicton gris 40-45%CX ; S-A ; TC					
		Sédiments					
52		Sable fin gris-brun					
53		Silt grossier. Structures : Lames à 54'					
59		Diamicton brun ; S-A ; TC ; 50%CX					
60							
61							
66		Zone de mélange à la base ; clastes angulaires de shale et de régolite					
71		Régolite					
72		Sable gris-blanc					
		Roc					
		Roc fracturé					
79		Roc : Shale noir 1-2%PY gf diss, bande de PY					
80.5		gf de 2-3mm.					



Rémi Charbonneau

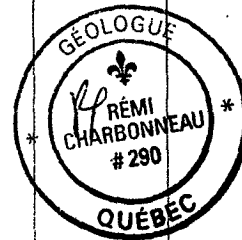
[Signature]

HOLE NO

G65-S03

DATE 1er mars 2011

Profondeur (pieds)	Échantillons	Description					
			gl	ca	litho %	hrs	stage
0		Surface remaniée					
3		Diamicton gris Silto-argileux (S-A) à silto-argileux plus silteux ; 10-30% cailloux (CX) ; compact (C)					
7		D ; S-A ; gris ; 30%CX ; C					
13		D ; S-A + argileux ; gris ; 10-15%CX ; C					
20		D ; S-A + silteux ; gris ; 20-25%CX ; C					
33		D ; S-A ; gris ; 25-30%CX ; C					
38		Sédiments					
40		Sable brun-vert ; C					
43		Silt gris ; C ; Lames de 3mm de m.o. presentes partout					
58		Diamicton brun ; S-A ; C à Très C ; 40-50%CX					
60		D brun ; S-A ; 40-50%CX ; C					
63		D brun ; S-A ; 40-50%CX ; TC					
67		Saprolite : pourrie et s'effrite, blanc-beige ; of+					
70		Roc frais					
		Roc fracturé					
80		Roche volcanique noire à gf-gm ; of+ ; (basalte?) Idem aux blocs retrouvés dans G59-S01-S02					
82.5							



Remi Charbonneau

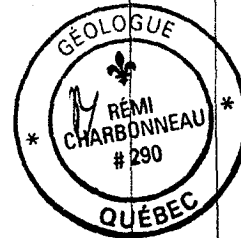
Stéphane

HOLE NO

G65-S04

DATE 1er mars 2011

Profondeur (pieds)	Échantillons	Description	gl	ca	litho %	hrs	stage
0		Surface remaniée					
5		Diamicton (D) gris à brun ; Silto-argileux (S-A) à S-A plus silteux ; 5-30% Cailloux (CX) ; Compact (C)					
8		D ; S-A ; gris ; 5%CX ; C					
15		D ; S-A plus silteux ; gris ; 30%CX ; C					
20		D ; S-A ; gris-brun ; 30%CX ; C					
21		Zone de mélange des deux diamictons					
		D ; S-A ; brun ; 30%CX ; C					
36		D ; S-A ; gris ; 30%CX ; C					
40		Zone de mélange ; Diamicton avec amas d'argiles					
41		Sédiments					
		Argiles					
		Lamines à 51'					
60							
64		Diamicton brun ; S-A ; Très C ; 40%CX					
76		Roc					
		Roc fracture : shale noir					
		Roc frais : shale noir					
86							



Rémi Charbonneau

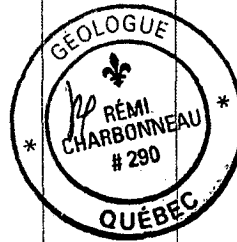
Stéphane

HOLE NO

G65-S05

DATE 2 mars 2011

Profondeur (pieds)	Échantillons	Description					
			gl	ca	litho %	hrs	stage
0		Surface remaniée					
1		Diamicton gris Silto-argileux (S-A) à silto-argileux plus silteux; 10-40% cailloux (CX); compact (C) à très compact (TC)					
6		D; gris; S-A; 15%CX; C					
12		D; gris; S-A; 30%CX; C					
16		D; gris; S-A plus silteux; 10%CX; C					
20		D; gris; S-A; 30%CX; C					
22		Zone de mélange D gris et D gris TC					
		D; gris; S-A; 30-40%CX; TC					
32		Zone de mélange D gris TC et sédiments					
40		Sédiments					
44		Sables					
		Silts					
752		Argiles					
60							
64		Diamicton brun; S-A; C à Très C; 40-50%CX					
72		Zone de mélange D brun et roc					
73		Roc frais					



Rémi Charbonneau

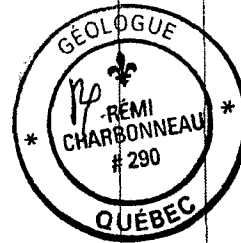
Stéphane Lavoie

HOLE NO

G65-S06

DATE 2 mars 2011

Profondeur (pieds)	Échantillons	Description					
			gl	ca	litho %	hrs	stage
0		Surface remaniée					
5		Diamicton (D) gris Silto-argileux (S-A) à silto-argileux plus silteux ; 10-20% cailloux (CX) ; compact (C)					
12		D gris ; S-A + silteux ; 10-15% CX ; C					
16		Zone de mélange gris-brun					
17		D brun ; S-A ; 10-20% CX ; C					
20		Sédiments					
		Argiles					
40							
52		D brun-gris ; S-A ; Très C ; 30-40%CX					
57		D brun-gris ; S-A ; Très C ; 30-40%CX					
60		Zone de mélange avec la saprolite et le diamicton brun-gris					
64		Saprolite					
65		Roc					
67		Roc fracturé					
70		Roc frais					
76							
80							



Rémi Charbonneau

Stéphane Laporte

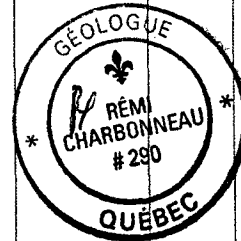
Profondeur
(pieds)

HOLE NO

G65-S07

DATE 3 mars 2011

Profondeur (pieds)	Échantillons	Description*	gl	ca	litho %	hrs	stage
0		Diamicton (D) gris-brun à gris-bleuté ; Silto-argileux (S-A) ; 5% cailloux (CX) ; peu compact (C)					
5		D gris-brun ; 5% CX S-A ; MS 70%					
10		D gris ; S-A ; plq, 5% CX ; MS 70%					
20		D gris-bleuté ; CX S-A ; peu compact, massif 5%CX MS70					
26		D gris ; S-A ; peu C					
32		Sédiments					
36		Silto-argileux gris laminés 40 degree prp à la carotte					
40		D gris à brun ; S-A ; peu C ; 20%CX MS95 TA					
50		D gris ; S-A ; peu C ; 20%CX MS95 TA					
50		D brun ; S-A ; peu C ; 20%CX MS95 TA					
50		D gris fê brun ; S-A ; peu C ; 20%CX MS95 TA					
50		Saprolite					
50		Dm sec = sap de MS gris; silteux CX = 100% MS					
62		Roc					
67		MS gris-bleuté ; fractures et présence de fissures.					



Rémi Charbonneau

Stéphane

Appendix III-sample processing data

Hole #	Sample	from	to (m)	Unit	Weight (kg)	>2 mm (kg)	Conc (kg)	SEM	Description
G59-S01	-01	25.6	28.7	Lower diamict	27.314	15.2	0.452	4	
G59-S01	-02	22.6	25.6	Lower diamict	29.832	24.51	0.282	0	
G59-S01	-03	2.1	5.2	Upper diamict	15.268	9.188	0.152	0	
G59-S01	-04	0.0	2.1	Upper diamict	11.268		0.76	0	
G59-S01	-05	11.3	13.7	Lower diamict	21.116	13.042	0.458	1	
G59-S01	-06	8.2	11.3	Upper diamict	21.248	14.192	0.524	0	
G59-S01	-07	5.2	8.2	Upper diamict	24.098	14.634	0.282	0	
G59-S02	-01	33.5	36.6	Alterite	27.322	15.2	0.452	0	
G59-S02	-02	30.2	33.5	Lower diamict	26.26	14.058	0.68	0	
G59-S02	-03	27.4	30.2	Lower diamict	23.456	15.626	0.444	2	1 copper color grain
G59-S02	-04	24.4	27.4	Lower diamict	16.18	18.922	0.26	0	
G59-S03	-01	28.0	29.6	Alterite	10.302	5.632	0.314	1	
G59-S03	-02	25.0	28.0	Lower diamict	21.812	12.656	0.39	0	
G59-S04	-01	29.6	31.7	Alterite	13.642	8.744	0.344	0	
G59-S04	-02	25.3	29.9	Lower diamict	43.154	28.848	0.352	3	
G60-S01	-01	15.8	18.9	Lower diamict	33.358	22.13	0.3	0	
G60-S01	-02	12.8	15.8	Lower diamict	31.426			0	
G65-S01	-01	18.3	20.1	Alterite	12.23	7.584	0.248	0	
G65-S01	-02	15.2	18.3	Lower diamict	35.068	19.712	0.278	0	
G65-S01	-03	11.9	15.2	Lower diamict	18.126	14.042	0.14	0	
G65-S01	-04	8.2	11.9	Lower diamict	33.136	16.206	0.332	0	
G65-S01	-05	5.2	8.2	Upper diamict	30.21	17.676	0.264	0	
G65-S02	-01	21.6	21.9	Alterite		2.686	0.278	0	
G65-S02	-02	18.0	21.6	Lower diamict	36.25	24.148	0.322	0	
G65-S03	-01	20.4	21.3	Alterite	6.434	4.298	0.164	0	
G65-S03	-02	17.7	20.4	Lower diamict	32.264	22.332	0.386	3	Automorphous oxidized 1mm grain PY.
G65-S04	-01	19.5	19.8	Lower diamict	8			4	
G65-S04	-01b	19.5	21.9	Lower diamict	27.926	18.79	0.514	3	Automorphous oxidized 1mm grain PY.
G65-S05	-01	19.5	21.9	Lower diamict	30.934	9.87	0.16	2	Automorphous oxidized 1mm grain PY.
G65-S06	-01	15.8	19.8	Lower diamict	47.884	24.246	0.242	0	Fine unaltered and automorphous pyrite.
G65-S07	-01	15.8	18.3	Alterite	17.864	13.508	0.242	0	Fine unaltered and automorphous pyrite.
G65-S07	-02	13.7	15.8	Lower diamict	21.154	14.272	0.152	0	Fine unaltered and automorphous pyrite.
G65-S07	-03	11.0	13.7	Lower diamict	30.866	15.304	0.16	0	Fine unaltered and automorphous pyrite.

conc = dense mineral concentrate

n=25 t = 23

Appendix IV - SEM results

Sample#	Description	Segment 1			Segment 2		
		A axis (um)	B axis (um)	C axis (um)	A axis (um)	B axis (um)	C axis (um)
G59-S01-01	Gold grain	1235.96	612.24	255.10	255.10	255.10	255.10
	Gold grain (+silver)	760.00	460.00	120.00	260.00	260.00	120.00
	Altered plagioclase						
	Gold grain	738.00	625.00	312.50	852.00	852.00	312.50
G59-S01-05	Biotite						
G59-S02-03	Garnet						
	Gold grain	248.00	238.10	32.00	200.00	152.00	32.00
G59-S03-01	Gold grain	578.95	407.89	150.00			
G59-S04-02	Gold grain (+silver)	1785.71	714.29	357.14	1250.00	714.29	267.86
	Gold grain	669.29	593.75	122.95			
	quartz and iron oxyde						
G65-S03-02	Organic matter						
	Gold grain	232.56	174.42	56.82			
	Gold grain	446.43	312.50	111.61	97.46	52.97	42.37
G65-S04-01	Gold grain	585.94	468.75	119.05	349.21	198.41	119.05
	Gold grain	1801.80	983.61	267.86			
	Gold grain	714.29	436.51	198.41	436.51	238.10	198.41
	Gold grain	631.58	526.32	98.68			
G65-S04-01b	Gold grain	2136.36	1454.55	136.36			
	Gold grain	1031.75	456.35	119.05			
	Gold grain (+silver)	120.00	107.00	66.67	266.67	66.67	13.33
G65-S05-01	Gold grain	210.53	121.62	26.67	133.33	133.33	26.67
	Biotite						

Appendix IV - SEM results

Sample#	Segment 3			Volume (um3)	Weight (mg)
	A axis (um)	B axis (um)	C axis (um)		
G59-S01-01	255.10	255.10	255.10	226237009	12.626034
	320.00	180.00	120.00	56976000	
	Total			654198634	
G59-S01-05					
G59-S02-03	144.00	112.00	32.00	3378458	0.065204
G59-S03-01				35422187	0.683648
G59-S04-02	1000.00	419.64	357.14	844569733	17.243179
	Total			893428949	
G65-S03-02				2304796	0.349217
	Total			18094171	
G65-S04-01	317.46	198.41	119.05	48445418	12.322130
	Total			638452335	
				474719840	
G65-S04-01b	106.67	106.67	90.91	82484545	9.300896
	Total			481911701	
				32802533	
G65-S05-01				1156986	0.022330



ALS Canada Ltd.
 2103 Dollarton Hwy
 North Vancouver BC V7H 0A7
 Téléphone: 604 984 0221 Télécopieur: 604 984 0218
 www.alsglobal.com

A: CONSULTANTS INLANDSIS
 C.P. 60 , SUCC. "R"
 MONTRÉAL QC H2S 3K6

Page: 1
 Finalisée date:
 28-AOUT-2011
 Cette copie a fait un rapport sur
 29-AOUT-2011
 Compte: INLCON

CERTIFICAT VO11121799

Projet: RG11
 Bon de commande #: IS11-02
 Ce rapport s'applique aux 23 échantillons de concentré soumis à notre laboratoire de Val d'Or, QC, Canada le 4-JUIL-2011.
 Les résultats sont transmis à:
 RÉMI CHARBONNEAU

PRÉPARATION ÉCHANTILLONS	
CODE ALS	DESCRIPTION
WEI-21	Poids échantillon reçu
LOG-22	Entrée échantillon - Reçu sans code barre
PUL-31	Pulvérisé à 85 % < 75 um

PROCÉDURES ANALYTIQUES		
CODE ALS	DESCRIPTION	
ME-MS61	ICP-MS 48 éléments, quatre acides	
Au-AA23	Au 30 q fini FA-AA	AAS

A: CONSULTANTS INLANDSIS
 ATTN: RÉMI CHARBONNEAU
 C.P. 60 , SUCC. "R"
 MONTRÉAL QC H2S 3K6

REÇU AU MRNF
 15 JAN. 2013
 DIRECTION DES TITRES MINIERS

Ce rapport est final et remplace tout autre rapport préliminaire portant ce numéro de certificat. Les résultats s'appliquent aux échantillons soumis. Toutes les pages de ce rapport ont été vérifiées et approuvées avant publication.

Signature: *Nacera Amara*
 Nacera Amara, Laboratory Manager, Val d'Or

1267993



ALS Canada Ltd.
 2103 Dollarton Hwy
 North Vancouver BC V7H 0A7
 Téléphone: 604 984 0221 Télécopieur: 604 984 0218
 www.alsglobal.com

A: CONSULTANTS INLANDSIS
 C.P. 60, SUCC. "R"
 MONTRÉAL QC H2S 3K6

Page: 2 - A
 Nombre total de pages: 2 (A - D)
 plus les pages d'annexe
 Finalisée date:
 28-AOUT-2011
 Compte: INI.CON

Projet: RG11

CERTIFICAT D'ANALYSE VO11121799

Description échantillon	Méthode élément unités L.D.	WEI-21	Au-AA23	ME-MS61	ME-MS61	ME-MS61	ME-MS61	ME-MS61	ME-MS61	ME-MS61	ME-MS61	ME-MS61	ME-MS61	ME-MS61	ME-MS61	ME-MS61
		Poids reçu kg	Au ppm	Ag ppm	Al %	As ppm	Ba ppm	Be ppm	Bi ppm	Ca %	Cd ppm	Ce ppm	Co ppm	Cr ppm	Cs ppm	Cu ppm
		0.02	0.005	0.01	0.01	0.2	10	0.05	0.01	0.01	0.02	0.01	0.1	1	0.05	0.2
G59-501-01		0.10	0.109	0.43	4.49	115.0	1340	1.93	0.38	0.24	0.42	51.6	50.9	534	2.13	47.5
G59-501-02		0.17	0.026	0.39	4.64	73.4	1210	1.62	0.21	0.20	0.25	41.1	38.9	87	1.76	31.0
G59-501-03		0.08	0.020	4.63	3.61	77.0	470	0.85	0.15	1.24	0.24	59.0	31.2	2290	0.74	42.5
G59-501-04		0.20	<0.005	0.05	4.13	5.6	670	0.89	0.05	0.77	0.08	45.0	14.9	2100	1.03	11.7
G59-501-05		0.18	<0.005	0.08	2.70	22.8	350	0.75	0.12	0.35	0.10	56.8	20.6	2210	0.91	15.9
G59-501-06		0.16	<0.005	0.07	2.78	14.8	360	0.84	0.09	0.32	0.08	54.5	11.5	705	0.94	12.7
G59-501-07		0.18	0.014	0.06	3.27	35.5	500	0.92	0.10	0.44	0.10	45.4	13.1	527	1.12	16.1
G59-502-01		0.07	<0.005	0.20	5.81	61.4	3070	2.12	0.15	0.29	0.42	30.9	100.0	43	4.20	90.8
G60-501-01		0.26	<0.005	0.07	6.70	8.8	2520	3.04	0.09	0.62	0.10	80.5	9.3	17	2.03	10.4
G65-501-02		0.17	0.005	0.12	4.07	85.4	720	1.06	0.17	1.10	0.16	44.1	30.7	1760	1.38	36.3
G65-501-03		0.07	0.009	0.16	3.64	104.0	430	0.82	0.22	1.43	0.21	52.4	36.4	2320	0.94	48.2
G65-501-04		0.21	0.007	0.15	4.14	71.6	600	0.93	0.20	1.37	0.20	54.7	30.1	2140	1.28	52.7
G65-501-05		0.16	0.017	0.22	4.08	172.0	530	0.69	0.18	1.22	0.27	46.3	36.7	4830	1.03	59.2
G65-502-01		0.13	<0.005	0.09	6.55	13.4	1660	1.56	0.18	0.38	0.18	52.8	9.6	77	2.91	23.6
G65-502-02		0.18	0.009	0.05	4.70	30.4	1200	1.25	0.22	0.30	0.14	47.6	11.2	106	1.70	26.4
G65-503-01		0.08	0.018	0.05	5.75	25.9	1550	1.51	0.15	0.29	0.15	50.6	7.4	70	2.06	19.9
G65-503-02		0.21	0.033	0.05	3.59	97.0	820	1.40	0.31	0.22	0.37	43.8	40.8	488	1.26	36.9
G65-504-01		0.10	0.590	0.05	3.43	116.0	750	1.43	0.43	0.19	0.32	57.1	26.5	386	1.27	54.3
G65-505-01		0.12	0.006	0.03	6.38	11.7	1620	1.79	0.14	0.12	0.14	46.7	14.4	95	3.24	27.9
G65-506-01		0.20	<0.005	0.09	6.42	34.9	1880	1.75	0.17	0.19	0.34	98.0	22.6	77	3.45	61.4
G65-507-01		0.20	<0.005	0.11	7.41	30.8	890	1.76	0.21	0.16	0.59	90.0	27.0	83	4.25	111.0
G65-507-02		0.10	<0.005	0.06	6.94	12.1	2110	1.91	0.16	0.09	0.14	36.9	18.8	82	3.80	55.2
G65-507-03		0.12	0.059	0.06	3.42	135.5	770	1.58	0.48	0.26	0.43	49.0	28.4	473	1.31	50.8



ALS Canada Ltd.
 2103 Dollarton Hwy
 North Vancouver BC V7H 0A7
 Téléphone: 604 984 0221 Télécopieur: 604 984 0218
 www.alsglobal.com

À: CONSULTANTS INLANDSIS
 C.P. 60 , SUCC. "R"
 MONTRÉAL QC H2S 3K6

Page: 2 - B
 Nombre total de pages: 2 (A - D)
 plus les pages d'annexe
 Finalisée date:
 28-AOUT-2011
 Compte: INLCOM

Projet: RG11

CERTIFICAT D'ANALYSE VO11121799

Description échantillon	Méthode élément unités L.D.	ME-MS61	ME-MS61	ME-MS61	ME-MS61	ME-MS61	ME-MS61	ME-MS61	ME-MS61	ME-MS61	ME-MS61	ME-MS61	ME-MS61	ME-MS61	ME-MS61	
		Fe %	Ga ppm	Ge ppm	Hf ppm	In ppm	K %	La ppm	Li ppm	Mg %	Mn ppm	Mo ppm	Na %	Nb ppm	Ni ppm	P ppm
G59-501-01		12.80	14.10	0.19	3.8	0.058	1.29	28.7	19.8	0.50	1020	6.21	0.81	9.8	43.0	800
G59-501-02		8.48	13.25	0.10	3.4	0.056	1.35	22.5	17.8	0.52	603	4.58	0.58	7.1	28.6	730
G59-501-03		8.07	12.60	0.14	6.3	0.069	1.00	28.1	14.7	1.04	921	3.30	0.98	27.7	83.4	390
G59-501-04		3.43	11.60	0.07	3.2	0.036	1.23	21.9	18.0	1.62	517	0.76	1.13	12.1	99.9	360
G59-501-05		4.97	8.63	0.10	4.3	0.031	0.80	28.5	14.6	0.60	635	1.87	0.48	12.5	58.2	370
G59-501-06		3.70	8.24	0.08	4.3	0.029	0.82	27.2	15.9	0.48	511	1.35	0.54	11.4	37.5	320
G59-501-07		4.01	9.99	0.10	3.7	0.032	1.00	22.8	17.0	0.61	535	1.52	0.62	11.0	43.4	340
G59-502-01		16.75	19.25	0.40	3.4	0.061	1.98	15.0	41.4	0.96	3110	3.91	0.87	4.0	74.5	1160
G60-501-01		3.92	22.9	0.28	9.8	0.117	1.74	37.0	25.0	0.90	928	0.83	2.06	13.8	10.8	660
G65-501-02		6.02	12.05	0.12	2.3	0.044	1.15	22.0	21.7	1.81	1140	3.10	0.75	9.4	174.0	350
G65-501-03		6.71	11.00	0.14	3.1	0.045	0.98	25.4	22.2	1.99	712	2.47	0.83	15.0	198.0	320
G65-501-04		5.94	12.40	0.13	3.1	0.048	1.19	26.7	23.3	1.90	659	2.23	0.92	14.5	151.5	350
G65-501-05		7.52	11.05	0.15	3.5	0.052	1.11	22.3	15.1	2.14	741	2.38	0.93	18.2	194.0	320
G65-502-01		3.82	17.15	0.14	2.9	0.048	2.72	27.7	29.6	1.51	408	2.25	0.57	8.1	34.3	370
G65-502-02		7.68	12.80	0.13	3.8	0.051	1.48	24.8	17.1	0.62	2900	3.04	0.64	6.7	23.2	460
G65-503-01		5.37	14.90	0.15	3.8	0.051	1.90	27.7	16.8	0.60	517	2.40	1.42	6.7	23.1	430
G65-503-02		13.85	10.80	0.15	3.4	0.051	0.98	24.2	13.0	0.43	733	5.64	0.53	9.3	45.5	820
G65-504-01		16.05	11.15	0.18	3.0	0.055	0.90	31.0	13.3	0.39	755	6.80	0.55	10.1	52.3	870
G65-505-01		5.41	17.75	0.17	4.1	0.055	2.19	28.1	33.7	1.03	542	2.25	0.54	12.7	39.8	410
G65-506-01		7.04	18.15	0.18	3.5	0.058	2.27	49.4	35.4	1.26	2410	2.98	0.70	8.6	45.6	470
G65-507-01		5.98	20.8	0.19	2.6	0.063	2.79	47.1	42.2	2.00	405	3.47	0.58	9.3	80.7	460
G65-507-02		6.05	22.0	0.16	2.7	0.056	2.91	18.1	44.9	1.67	436	2.12	0.32	8.8	59.5	500
G65-507-03		18.75	11.20	0.14	3.3	0.053	0.90	28.5	12.7	0.41	947	7.66	0.49	9.4	58.6	1010



ALS Canada Ltd.
 2103 Dollarton Hwy
 North Vancouver BC V7H 0A7
 Téléphone: 604 984 0221 Télécopieur: 604 984 0218
 www.alsglobal.com

A: CONSULTANTS INLANDSIS
 C.P. 60 , SUCC. "R"
 MONTRÉAL QC H2S 3K6

Page: 2 - C
 Nombre total de pages: 2 (A -
 D)
 plus les pages d'annexe
 Finalisée date:
 28-AOUT-2011
 Compte: INI CON

Projet: RG11

CERTIFICAT D'ANALYSE VO11121799

Description échantillon	Méthode élément unités L.D.	ME-MS61	ME-MS61	ME-MS61	ME-MS61	ME-MS61	ME-MS61	ME-MS61	ME-MS61	ME-MS61	ME-MS61	ME-MS61	ME-MS61	ME-MS61	ME-MS61	
		Pb ppm 0.5	Rb ppm 0.1	Re ppm 0.002	S % 0.01	Sb ppm 0.05	Sc ppm 0.1	Se ppm 1	Sn ppm 0.2	Sr ppm 0.2	Ta ppm 0.05	Te ppm 0.05	Th ppm 0.2	Ti % 0.005	Tl ppm 0.02	U ppm 0.1
G59-501-01		43.0	54.1	0.004	0.02	4.73	13.2	3	1.5	73.3	0.60	0.15	7.8	0.475	0.38	4.3
G59-501-02		25.1	53.2	0.002	0.01	2.92	11.9	2	1.2	58.0	0.46	0.07	6.6	0.352	0.36	3.1
G59-501-03		24.2	39.3	0.002	2.38	1.06	12.1	4	3.0	140.5	1.78	0.08	6.9	1.180	0.33	1.8
G59-501-04		7.7	50.0	<0.002	0.03	0.31	8.9	1	1.3	128.0	0.72	<0.05	4.9	0.449	0.25	1.4
G59-501-05		13.9	33.2	<0.002	0.04	0.82	5.9	2	1.3	54.6	0.77	<0.05	6.5	0.513	0.19	1.7
G59-501-06		11.7	36.1	<0.002	0.02	0.68	5.8	2	1.1	59.3	0.70	<0.05	5.9	0.436	0.18	1.5
G59-501-07		13.6	42.3	<0.002	0.18	0.79	6.9	1	1.2	72.3	0.67	<0.05	5.4	0.423	0.23	1.6
G59-502-01		12.5	53.5	0.002	0.12	1.28	25.4	6	1.2	73.6	0.24	0.05	4.0	0.390	0.64	2.9
G60-501-01		13.1	63.2	<0.002	<0.01	0.38	18.2	3	3.6	229	0.89	<0.05	10.7	0.538	0.40	2.6
G65-501-02		21.6	48.0	0.002	1.46	1.17	11.6	3	1.2	98.1	0.58	0.08	5.2	0.383	0.33	1.8
G65-501-03		25.2	41.7	<0.002	2.80	0.85	10.4	4	1.6	133.0	0.89	0.08	5.5	0.571	0.31	1.6
G65-501-04		21.7	49.9	<0.002	2.42	0.98	10.5	3	1.7	132.5	0.88	0.07	6.5	0.557	0.36	1.9
G65-501-05		23.4	49.1	<0.002	3.30	1.49	9.1	3	2.0	121.5	0.94	0.11	5.1	0.718	0.32	1.7
G65-502-01		14.0	102.0	0.005	0.66	1.20	12.6	2	1.5	33.9	0.59	0.09	9.1	0.320	0.69	3.1
G65-502-02		21.8	53.7	0.002	0.08	2.04	10.9	2	1.2	56.6	0.44	0.11	7.0	0.340	0.39	2.9
G65-503-01		25.8	73.1	0.002	0.08	1.53	11.4	2	1.3	113.0	0.45	0.06	9.0	0.259	0.43	3.2
G65-503-02		39.0	35.3	0.004	0.03	4.97	10.0	4	1.2	55.7	0.57	0.16	5.8	0.519	0.25	4.3
G65-504-01		50.1	34.2	<0.002	0.06	7.01	9.7	5	1.3	60.0	0.59	0.24	9.1	0.519	0.24	4.1
G65-505-01		18.6	91.5	<0.002	0.05	1.13	14.4	1	1.8	53.4	0.68	<0.05	8.6	0.397	0.52	5.4
G65-506-01		25.6	91.9	0.002	0.87	1.90	13.8	3	1.6	55.3	0.58	0.07	9.7	0.351	0.53	3.5
G65-507-01		22.3	114.5	0.003	2.17	0.91	13.8	2	1.7	42.3	0.64	0.05	10.3	0.354	0.67	3.7
G65-507-02		20.7	78.7	0.003	0.09	1.13	13.3	1	2.0	39.1	0.61	0.05	6.7	0.326	0.72	3.6
G65-507-03		53.9	33.2	<0.002	0.04	8.76	10.6	4	1.3	62.5	0.55	0.24	6.0	0.520	0.23	3.5



ALS Canada Ltd.
 2103 Dollarton Hwy
 North Vancouver BC V7H 0A7
 Téléphone: 604 984 0221 Télécopieur: 604 984 0218
 www.alsglobal.com

À: CONSULTANTS INLANDSIS
 C.P. 60 , SUCC. "R"
 MONTRÉAL QC H2S 3K6

Page: 2 - D
 Nombre total de pages: 2 (A -
 D)
 plus les pages d'annexe
 Finalisée date:
 28-AOUT-2011
 Compte: INLCON

Projet: RG11

CERTIFICAT D'ANALYSE VO11121799

Description échantillon	Méthode élément unités L.D.	ME-MS61	ME-MS61	ME-MS61	ME-MS61	ME-MS61
		V ppm 1	W ppm 0.1	Y ppm 0.1	Zn ppm 2	Zr ppm 0.5
G59-501-01		80	580	28.7	135	130.0
G59-501-02		75	428	23.0	112	112.5
G59-501-03		109	94.9	30.1	98	218
G59-501-04		63	6.4	17.9	52	107.5
G59-501-05		62	59.6	16.3	57	145.5
G59-501-06		48	3.1	16.1	46	147.0
G59-501-07		53	22.8	16.0	53	125.5
G59-502-01		147	374	25.2	213	133.5
G60-501-01		66	23.9	64.5	112	355
G65-501-02		75	35.1	19.0	83	75.0
G65-501-03		77	10.9	18.4	91	110.0
G65-501-04		80	1.2	19.2	86	106.0
G65-501-05		98	19.4	19.7	113	130.0
G65-502-01		107	2.1	19.2	74	89.4
G65-502-02		72	2.0	22.8	87	118.5
G65-503-01		51	3.8	26.0	72	120.5
G65-503-02		84	352	26.5	127	111.0
G65-504-01		85	25.0	30.4	144	103.0
G65-505-01		96	15.0	24.3	98	136.0
G65-506-01		100	9.0	25.3	126	111.5
G65-507-01		130	1.9	18.7	185	86.0
G65-507-02		135	6.4	13.6	119	85.9
G65-507-03		92	3.5	31.3	165	106.0

***** Voir la page d'annexe pour les commentaires en ce qui concerne ce certificat *****



ALS Canada Ltd.
2103 Dollarton Hwy
North Vancouver BC V7H 0A7
Téléphone: 604 984 0221 Télécopieur: 604 984 0218
www.alsglobal.com

À: CONSULTANTS INLANDSIS
C.P. 60 , SUCC. "R"
MONTREAL QC H2S 3K6

Page: Annexe 1
Total # les pages d'annexe: 1
Finalisée date:
28-AOUT-2011
Compte: INLCON

Projet: RG11

CERTIFICAT D'ANALYSE VO11121799

Méthode	COMMENTAIRE DE CERTIFICAT
ME-MS61	L'analyse des terres rares peut être partiellement soluble avec cette méthode.



ALS Canada Ltd.
2103 Dollarton Hwy
North Vancouver BC V7H 0A7
Téléphone: 604 984 0221 Télécopieur: 604 984 0218
www.alsglobal.com

A: CONSULTANTS INLANDSIS
C.P. 60, SUCC. "R"
MONTRÉAL QC H2S 3K6

Page: 1
Finalisée date:
25-AOUT-2011
Compte: INLCON

CERTIFICAT VO11149881

Projet: RG11
Bon de commande #: IS11-03
Ce rapport s'applique aux 12 échantillons de roche soumis à notre laboratoire de Val d'Or, QC, Canada le 4-JUIL-2011.
Les résultats sont transmis à:
RÉMI CHARBONNEAU

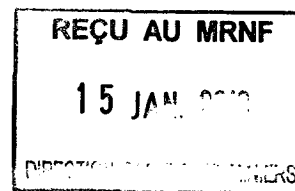
PRÉPARATION ÉCHANTILLONS

CODE ALS	DESCRIPTION
WEI-21	Poids échantillon reçu
LOG-22	Entrée échantillon - Reçu sans code barre
CRU-31	Granulation - 70 % <2 mm
SPL-21	Échant. fractionné - div. riffles
PUL-31	Pulvérisé à 85 % <75 um

PROCÉDURES ANALYTIQUES

CODE ALS	DESCRIPTION	
ME-MS61	ICP-MS 48 éléments, quatre acides	
ME-XRF06	Roche totale - XRF	XRF
OA-GRA06	Perte par calcination pour ME-XRF06	WST-SIM
Au-AA23	Au 30 g fini FA-AA	AAS

A: CONSULTANTS INLANDSIS
ATTN: RÉMI CHARBONNEAU
C.P. 60, SUCC. "R"
MONTRÉAL QC H2S 3K6



Ce rapport est final et remplace tout autre rapport préliminaire portant ce numéro de certificat. Les résultats s'appliquent aux échantillons soumis. Toutes les pages de ce rapport ont été vérifiées et approuvées avant publication.

Signature: *Nacera Amara*
Nacera Amara, Laboratory Manager, Val d'Or

1267993



ALS Canada Ltd.
 2103 Dollarton Hwy
 North Vancouver BC V7H 0A7
 Téléphone: 604 984 0221 Télécopieur: 604 984 0218
 www.alsglobal.com

A: CONSULTANTS INLANDSIS
 C.P. 60, SUCC. "R"
 MONTRÉAL QC H2S 3K6

Page: 2 - A
 Nombre total de pages: 2 (A - E)
 plus les pages d'annexe
 Finalisée date:
 25-AOUT-2011
 Compte: INI CON

Projet: RG11

CERTIFICAT D'ANALYSE VO11149881

Description échantillon	Méthode élément unités L.D.	WEI-21	Au-AA23	ME-MS61	ME-MS61	ME-MS61	ME-MS61	ME-MS61	ME-MS61	ME-MS61	ME-MS61	ME-MS61	ME-MS61	ME-MS61	ME-MS61	ME-MS61
		Poids reçu kg	Au ppm	Ag ppm	Al %	As ppm	Ba ppm	Be ppm	Bi ppm	Ca %	Cd ppm	Ce ppm	Co ppm	Cr ppm	Cs ppm	Cu ppm
RG11-020		0.79	<0.005	0.12	6.42	16.0	1990	1.59	0.17	0.14	0.13	57.4	4.8	14	2.98	20.4
RG11-021		1.01	<0.005	0.23	6.94	15.2	1660	1.25	0.17	0.11	0.09	66.9	7.7	8	2.33	17.8
RG11-022		0.88	<0.005	0.16	7.03	13.2	1870	1.71	0.24	0.11	0.13	76.5	6.7	18	3.25	29.5
RG11-023		0.61	0.006	0.12	7.90	51.4	2240	1.72	0.18	0.28	0.27	70.1	20.4	77	5.51	43.9
RG11-024		0.94	<0.005	0.10	7.42	4.9	2080	1.38	0.07	1.67	0.32	78.1	29.0	35	3.05	42.6
RG11-025		1.01	<0.005	0.14	8.31	6.6	2600	1.81	0.15	0.15	0.30	66.8	13.0	28	4.36	39.9
RG11-026		0.91	0.006	0.13	7.43	7.4	1890	1.53	0.16	0.36	0.20	69.6	7.7	17	2.67	19.5
RG11-027		0.76	0.005	0.09	6.26	11.6	1430	1.34	0.16	0.14	0.18	38.0	8.8	29	2.08	23.8
RG11-028		0.87	0.005	0.15	7.23	11.6	2360	1.66	0.16	0.08	0.20	58.1	14.8	57	3.89	34.3
RG11-029		0.91	0.005	0.16	7.73	15.9	2160	1.68	0.18	0.19	0.22	67.4	16.9	80	4.38	43.5
RG11-030		0.91	<0.005	0.17	7.94	16.5	2180	1.79	0.19	0.20	0.29	61.3	17.7	80	4.47	40.8
RG11-031		1.06	<0.005	0.08	6.14	5.6	820	1.01	0.09	0.50	0.13	61.6	5.7	13	0.70	7.1



ALS Canada Ltd.
 2103 Dollarton Hwy
 North Vancouver BC V7H 0A7
 Téléphone: 604 984 0221 Télécopieur: 604 984 0218
 www.alsglobal.com

A: CONSULTANTS INLANDSIS
 C.P. 60 , SUCC. "R"
 MONTRÉAL QC H2S 3K6

Page: 2 - B
 Nombre total de pages: 2 (A - E)
 plus les pages d'annexe
 Finalisée date:
 25-AOUT-2011
 Compte: INLCON

Projet: RG11

CERTIFICAT D'ANALYSE VO11149881

Description échantillon	Méthode élément unités L.D.	ME-MS61	ME-MS61	ME-MS61	ME-MS61	ME-MS61	ME-MS61	ME-MS61	ME-MS61	ME-MS61	ME-MS61	ME-MS61	ME-MS61	ME-MS61	ME-MS61	
		Fe %	Ga ppm	Ge ppm	Hf ppm	In ppm	K %	La ppm	Li ppm	Mg %	Mn ppm	Mo ppm	Na %	Nb ppm	Ni ppm	P ppm
RG11-020		2.92	16.15	0.14	4.4	0.052	1.72	28.6	24.1	0.60	448	1.21	1.42	7.0	14.1	260
RG11-021		2.24	12.20	0.15	5.5	0.062	1.36	33.7	20.3	0.41	320	1.55	1.93	8.1	26.2	310
RG11-022		3.95	17.85	0.19	6.0	0.092	1.83	36.9	20.7	0.79	222	4.54	1.46	6.7	13.2	300
RG11-023		5.65	21.0	0.21	2.4	0.058	2.90	37.5	33.6	1.36	553	2.43	0.16	9.8	56.4	720
RG11-024		5.58	20.7	0.24	6.8	0.095	2.28	36.8	39.4	2.08	1350	0.99	0.93	8.0	32.1	1340
RG11-025		4.00	20.5	0.19	5.3	0.087	2.89	29.8	39.5	1.34	329	1.79	1.06	6.8	26.2	410
RG11-026		3.42	16.90	0.17	3.9	0.054	2.32	33.7	19.8	0.68	462	1.59	1.54	7.6	18.0	410
RG11-027		4.09	16.85	0.17	4.4	0.065	1.59	19.4	20.5	0.65	599	2.61	1.67	7.0	17.9	390
RG11-028		4.23	17.75	0.17	2.9	0.049	2.78	28.0	36.6	1.42	413	2.31	0.88	9.2	27.9	350
RG11-029		4.77	20.7	0.21	2.4	0.054	2.89	34.8	41.8	2.07	371	2.64	0.67	10.4	52.4	510
RG11-030		4.81	21.6	0.21	2.5	0.055	2.96	32.2	44.1	2.14	346	2.88	0.69	10.6	54.9	490
RG11-031		2.82	14.25	0.16	5.2	0.060	0.71	30.0	12.7	0.72	716	1.01	3.09	6.5	5.9	380



ALS Canada Ltd.
 2103 Dollarton Hwy
 North Vancouver BC V7H 0A7
 Téléphone: 604 984 0221 Télécopieur: 604 984 0218
 www.alsglobal.com

A: CONSULTANTS INLANDSIS
 C.P. 60, SUCC. "R"
 MONTRÉAL QC H2S 3K6

Page: 2 - C
 Nombre total de pages: 2 (A - E)

plus les pages d'annexe

Finalisée date:

25-AOUT-2011

Compte: INLCON

Projet: RG11

CERTIFICAT D'ANALYSE VO11149881

Description échantillon	Méthode élément unités L.D.	ME-MS61	ME-MS61	ME-MS61	ME-MS61	ME-MS61	ME-MS61	ME-MS61	ME-MS61	ME-MS61	ME-MS61	ME-MS61	ME-MS61	ME-MS61	ME-MS61	
		Pb	Rb	Re	S	Sb	Sc	Se	Sn	Sr	Ta	Te	Th	Ti	Tl	U
		ppm	ppm	ppm	%	ppm	ppm	ppm	ppm	ppm	ppm	ppm	ppm	%	ppm	ppm
		0.5	0.1	0.002	0.01	0.05	0.1	1	0.2	0.2	0.05	0.05	0.2	0.005	0.02	0.1
RG11-020		13.1	72.6	<0.002	<0.01	0.40	12.8	1	1.6	74.8	0.46	0.06	8.2	0.216	0.42	2.6
RG11-021		14.2	57.9	<0.002	<0.01	0.46	12.9	1	1.6	94.1	0.53	0.07	9.3	0.235	0.34	3.0
RG11-022		26.6	76.0	0.003	0.66	0.65	15.3	2	2.3	68.5	0.43	0.08	11.5	0.248	0.46	3.6
RG11-023		17.4	123.0	<0.002	<0.01	2.01	15.3	1	1.8	70.1	0.61	0.06	9.7	0.355	0.69	3.7
RG11-024		6.8	92.9	0.005	1.01	0.48	24.6	3	2.1	128.0	0.51	<0.05	9.4	0.704	0.56	2.8
RG11-025		20.4	118.5	0.002	0.34	0.70	17.2	2	1.8	82.4	0.42	0.05	8.3	0.360	0.71	2.9
RG11-026		21.2	87.8	<0.002	0.10	0.60	13.8	2	1.5	122.5	0.49	0.05	10.2	0.253	0.50	3.2
RG11-027		19.2	53.0	<0.002	0.04	1.18	13.3	2	1.6	118.5	0.45	0.06	7.4	0.304	0.40	3.4
RG11-028		16.0	95.9	0.002	0.40	0.97	13.2	2	1.6	60.0	0.56	0.05	8.4	0.300	0.62	3.0
RG11-029		21.3	123.0	0.003	1.27	0.84	15.0	2	1.8	42.0	0.65	0.06	9.9	0.355	0.71	3.5
RG11-030		23.7	130.0	0.004	1.50	0.94	15.8	2	1.9	47.6	0.67	0.07	10.4	0.362	0.73	4.0
RG11-031		13.7	25.9	0.002	0.20	0.41	11.5	2	1.5	286	0.43	<0.05	7.8	0.303	0.16	1.9



ALS Canada Ltd.
 2103 Dollarton Hwy
 North Vancouver BC V7H 0A7
 Téléphone: 604 984 0221 Télécopieur: 604 984 0218
 www.alsglobal.com

À: CONSULTANTS INLANDSIS
 C.P. 60, SUCC. "R"
 MONTRÉAL QC H2S 3K6

Page: 2 - D
 Nombre total de pages: 2 (A - E)
 plus les pages d'annexe
 Finalisée date:
 25-AOUT-2011
 Compte: INI CON

Projet: RG11

CERTIFICAT D'ANALYSE VO11149881

Description échantillon	Méthode élément unités L.D.	ME-MS61	ME-MS61	ME-MS61	ME-MS61	ME-MS61	ME-XRF06	ME-XRF06	ME-XRF06	ME-XRF06	ME-XRF06	ME-XRF06	ME-XRF06	ME-XRF06	ME-XRF06	
		V ppm 1	W ppm 0.1	Y ppm 0.1	Zn ppm 2	Zr ppm 0.5	SiO2 %	Al2O3 %	Fe2O3 %	CaO %	MgO %	Na2O %	K2O %	Cr2O3 %	TiO2 %	MnO %
RG11-020		46	0.5	19.1	67	155.5	71.94	12.66	4.06	0.11	1.10	1.99	2.15	<0.01	0.35	0.06
RG11-021		35	0.8	27.8	59	200	72.32	14.29	3.32	0.11	0.82	2.85	1.75	<0.01	0.42	0.04
RG11-022		72	0.8	21.3	66	223	67.08	14.00	5.59	0.11	1.49	2.09	2.29	<0.01	0.48	0.03
RG11-023		136	1.6	17.1	131	82.4	60.51	16.02	8.20	0.36	2.59	0.24	3.71	0.01	0.63	0.07
RG11-024		162	0.4	45.1	138	261	57.62	14.85	8.38	2.41	3.85	1.32	2.91	<0.01	1.29	0.18
RG11-025		85	0.9	32.8	109	191.0	62.89	16.37	5.60	0.16	2.43	1.49	3.58	<0.01	0.64	0.04
RG11-026		56	1.5	28.5	78	131.0	68.02	14.53	4.67	0.43	1.26	2.15	2.84	<0.01	0.39	0.06
RG11-027		80	1.2	19.9	72	152.0	69.71	13.64	5.95	0.17	1.33	2.48	2.10	<0.01	0.56	0.08
RG11-028		101	1.1	17.7	80	103.5	65.75	14.33	5.95	0.08	2.55	1.26	3.46	<0.01	0.51	0.05
RG11-029		137	1.2	18.3	106	82.4	61.72	15.67	6.90	0.23	3.78	0.98	3.69	0.01	0.63	0.05
RG11-030		142	1.0	18.3	110	83.5	60.77	15.67	6.84	0.23	3.80	0.99	3.68	<0.01	0.63	0.04
RG11-031		52	0.5	32.6	77	196.5	72.20	12.43	4.11	0.67	1.32	4.45	0.90	<0.01	0.52	0.09

***** Voir la page d'annexe pour les commentaires en ce qui concerne ce certificat *****



ALS Canada Ltd.
 2103 Dollarton Hwy
 North Vancouver BC V7H 0A7
 Téléphone: 604 984 0221 Télécopieur: 604 984 0218
 www.alsglobal.com

À: CONSULTANTS INLANDSIS
 C.P. 60 , SUCC. "R"
 MONTRÉAL QC H2S 3K6

Page: 2 - E
 Nombre total de pages: 2 (A -
 E)
 plus les pages d'annexe
 Finalisée date:
 25-AOUT-2011
 Compte: INI.CON

Projet: RG11

CERTIFICAT D'ANALYSE VO11149881

Description échantillon	Méthode élément unités L.D.	ME-XRF06	ME-XRF06	ME-XRF06	ME-XRF06	ME-XRF06
		P2O5 %	SrO %	BaO %	LOI %	Total %
		0.001	0.01	0.01	0.01	0.01
RG11-020		0.061	0.01	0.21	3.70	98.39
RG11-021		0.072	0.01	0.19	3.81	100.00
RG11-022		0.071	0.01	0.20	5.12	98.55
RG11-023		0.157	0.01	0.25	7.06	99.82
RG11-024		0.296	0.01	0.24	4.89	98.26
RG11-025		0.093	0.01	0.28	4.81	98.39
RG11-026		0.090	0.01	0.20	3.64	98.28
RG11-027		0.091	0.02	0.16	3.54	99.82
RG11-028		0.080	0.01	0.26	4.17	98.46
RG11-029		0.115	0.01	0.24	5.15	99.17
RG11-030		0.108	0.01	0.24	5.14	98.15
RG11-031		0.087	0.03	0.08	1.49	98.37

***** Voir la page d'annexe pour les commentaires en ce qui concerne ce certificat *****



ALS Canada Ltd.
2103 Dollarton Hwy
North Vancouver BC V7H 0A7
Téléphone: 604 984 0221 Télécopieur: 604 984 0218
www.alsglobal.com

À: CONSULTANTS INLANDSIS
C.P. 60 , SUCC. "R"
MONTRÉAL QC H2S 3K6

Page: Annexe 1
Total # les pages d'annexe: 1
Finalisée date:
25-AOUT-2011
Compte: INLCON

Projet: RG11

CERTIFICAT D'ANALYSE VO11149881

Méthode	COMMENTAIRE DE CERTIFICAT
ME-MS61	L'analyse des terres rares peut être partiellement soluble avec cette méthode.



ALS Canada Ltd.
2103 Dollarton Hwy
North Vancouver BC V7H 0A7
Téléphone: 604 984 0221 Télécopieur: 604 984 0218
www.alsglobal.com

À: CONSULTANTS INLANDSIS
C.P. 60 , SUCC. "R"
MONTRÉAL QC H2S 3K6

Page: 1
Finalisée date: 12-JUIN-2011
Cette copie a fait un rapport sur
14-JUIN-2011
Compte: INLCON

CERTIFICAT VO11072419

Projet: RG11
Bon de commande #: IS11-01
Ce rapport s'applique aux 22 échantillons de roche soumis à notre laboratoire de Val d'Or, QC, Canada le 29-AVRIL-2011.
Les résultats sont transmis à:
RÉMI CHARBONNEAU

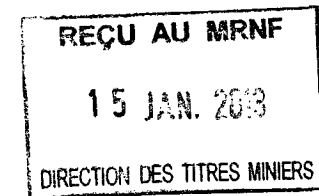
PRÉPARATION ÉCHANTILLONS

CODE ALS	DESCRIPTION
WEI-21	Poids échantillon reçu
LOG-22	Entrée échantillon - Reçu sans code barre
CRU-31	Granulation - 70 % <2 mm
SPL-21	Échant. fractionné - div. riffles
PUL-31	Pulvérisé à 85 % <75 um

PROCÉDURES ANALYTIQUES

CODE ALS	DESCRIPTION	INSTRUMENT
ME-XRF06	Roche totale - XRF	XRF
OA-GRA06	Perte par calcination pour ME-XRF06	WST-SIM
ME-MS61	ICP-MS 48 éléments, quatre acides	
Au-AA23	Au 30 q fini FA-AA	AAS

A: CONSULTANTS INLANDSIS
ATTN: RÉMI CHARBONNEAU
C.P. 60 , SUCC. "R"
MONTRÉAL QC H2S 3K6



Ce rapport est final et remplace tout autre rapport préliminaire portant ce numéro de certificat. Les résultats s'appliquent aux échantillons soumis. Toutes les pages de ce rapport ont été vérifiées et approuvées avant publication.

Signature: *Nacera Amara*
Nacera Amara, Laboratory Manager, Val d'Or

1267993



ALS Canada Ltd.
 2103 Dollarton Hwy
 North Vancouver BC V7H 0A7
 Téléphone: 604 984 0221 Télécopieur: 604 984 0218
 www.alsglobal.com

A: CONSULTANTS INLANDSIS
 C.P. 60, SUCC. "R"
 MONTRÉAL QC H2S 3K6

Page: 2 - A
 Nombre total de pages: 2 (A - E)
 plus les pages d'annexe
 Finalisée date: 12-JUIN-2011
 Compte: INLCON

Projet: RG11

CERTIFICAT D'ANALYSE VO11072419

Description échantillon	Méthode élément unités L.D.	WEI-21	Au-AA23	ME-XRF06	ME-XRF06	ME-XRF06	ME-XRF06	ME-XRF06	ME-XRF06	ME-XRF06	ME-XRF06	ME-XRF06	ME-XRF06	ME-XRF06	ME-XRF06	
		Poids reçu kg	Au ppm	SiO2 %	Al2O3 %	Fe2O3 %	CaO %	MgO %	Na2O %	K2O %	Cr2O3 %	TiO2 %	MnO %	P2O5 %	SrO %	BaO %
BC10-01		0.75	0.011	53.12	18.76	7.39	8.33	2.13	4.51	0.52	0.02	0.81	0.12	0.066	0.01	0.01
BC10-02		0.74	0.006	48.86	14.33	13.79	5.28	5.44	2.96	1.02	0.01	1.73	0.21	0.136	<0.01	0.02
BC10-03		0.76	<0.005	40.10	17.11	16.92	7.68	5.67	1.75	1.29	0.01	1.90	0.23	0.138	<0.01	0.01
RG11-001		0.94	<0.005	72.41	13.53	3.90	0.11	1.08	1.94	2.53	<0.01	0.55	0.07	0.054	0.01	0.26
RG11-002		0.33	<0.005	72.73	13.47	2.63	0.06	1.06	1.79	2.84	<0.01	0.53	0.03	0.035	<0.01	0.29
RG11-003		0.65	0.007	63.40	15.84	6.29	0.09	3.40	0.82	3.48	0.02	0.81	0.04	0.060	<0.01	0.29
RG11-004		0.48	0.107	69.01	14.55	4.45	0.07	1.54	2.20	2.40	<0.01	0.64	0.02	0.029	<0.01	0.22
RG11-005		0.69	0.009	62.90	17.02	5.37	0.28	2.40	0.28	4.08	0.02	0.84	0.02	0.053	<0.01	0.27
RG11-006		0.52	<0.005	62.50	14.85	6.76	0.12	3.56	0.62	3.61	0.01	0.72	0.04	0.083	<0.01	0.22
RG11-007		0.63	<0.005	72.28	12.83	4.49	0.16	1.78	2.75	1.99	<0.01	0.65	0.03	0.052	0.01	0.16
RG11-008		0.48	<0.005	70.77	13.03	3.19	1.75	1.56	0.65	3.91	<0.01	0.63	0.04	0.066	<0.01	0.24
RG11-009		0.81	<0.005	68.32	14.38	3.91	0.18	2.04	1.09	3.87	<0.01	0.60	0.04	0.075	<0.01	0.31
RG11-010		0.69	0.011	65.89	15.10	4.78	0.11	2.51	1.50	3.62	<0.01	0.81	0.03	0.051	<0.01	0.30
RG11-011		0.94	<0.005	55.20	13.45	7.13	7.01	3.00	1.18	2.89	0.01	1.40	0.28	0.301	0.01	0.25
RG11-012		0.82	<0.005	59.40	15.59	8.26	0.54	3.36	1.55	2.84	0.01	1.46	0.08	0.347	<0.01	0.26
RG11-013		0.34	<0.005	74.15	12.75	2.59	0.35	0.81	4.73	1.57	<0.01	0.45	0.06	0.045	0.01	0.23
RG11-014		0.62	0.005	65.47	15.51	5.82	0.49	1.69	1.24	4.39	0.01	0.60	0.03	0.071	<0.01	0.25
RG11-015		0.56	0.006	67.77	13.88	5.13	0.66	2.28	0.97	3.83	0.01	0.64	0.05	0.078	<0.01	0.22
RG11-016		0.67	<0.005	70.69	13.58	3.23	1.34	1.18	3.17	2.66	<0.01	0.46	0.10	0.068	0.02	0.20
RG11-017		0.61	0.005	72.03	14.05	3.02	0.88	1.11	3.80	2.41	<0.01	0.49	0.07	0.072	0.02	0.19
RG11-018		0.58	0.005	72.61	10.17	4.99	0.73	2.02	0.86	2.28	0.01	0.51	0.05	0.496	<0.01	0.17
RG11-019		0.78	0.008	74.80	12.86	2.39	0.14	0.98	4.09	1.88	<0.01	0.49	0.03	0.054	0.02	0.19



ALS Canada Ltd.
 2103 Dollarton Hwy
 North Vancouver BC V7H 0A7
 Téléphone: 604 984 0221 Télécopieur: 604 984 0218
 www.alsglobal.com

A: CONSULTANTS INLANDSIS
 C.P. 60, SUCC. "R"
 MONTRÉAL QC H2S 3K6

Page: 2 - B
 Nombre total de pages: 2 (A - E)
 plus les pages d'annexe
 Finalisée date: 12-JUIN-2011
 Compte: INLCON

Projet: RG11

CERTIFICAT D'ANALYSE VO11072419

Description échantillon	Méthode élément unités L.D.	ME-XRF06	ME-XRF06	ME-MS61	ME-MS61	ME-MS61	ME-MS61	ME-MS61	ME-MS61	ME-MS61	ME-MS61	ME-MS61	ME-MS61	ME-MS61	ME-MS61	ME-MS61
		LOI %	Total %	Ag ppm	Al %	As ppm	Ba ppm	Be ppm	Bi ppm	Ca %	Cd ppm	Ce ppm	Co ppm	Cr ppm	Cs ppm	Cu ppm
BC10-01		2.61	98.40	0.08	8.53	0.4	70	0.39	0.89	5.84	0.10	14.30	30.3	139	0.32	165.5
BC10-02		4.55	98.33	0.19	7.60	1.0	130	0.54	2.27	3.76	0.17	14.00	41.4	15	0.55	263
BC10-03		5.64	98.45	0.16	8.39	0.5	120	0.36	3.09	5.01	0.14	16.05	25.2	13	1.22	173.5
RG11-001		3.61	100.05	0.04	6.51	13.7	2130	1.86	0.20	0.10	0.12	63.4	4.8	17	3.14	17.8
RG11-002		3.11	98.58	0.05	6.76	10.6	2600	1.80	0.19	0.07	0.07	62.3	2.2	10	3.48	18.9
RG11-003		5.05	99.58	0.09	7.78	14.3	2540	2.07	0.19	0.09	0.68	65.2	21.0	83	4.24	44.3
RG11-004		4.88	100.00	0.11	6.48	9.2	1830	1.96	0.25	0.06	0.08	70.4	6.4	22	2.81	31.5
RG11-005		6.31	99.84	0.07	8.13	19.4	2280	2.14	0.19	0.21	0.11	60.0	6.1	92	6.09	46.8
RG11-006		5.20	98.29	0.08	7.33	14.0	1560	1.89	0.16	0.11	0.31	61.0	15.6	76	4.67	54.0
RG11-007		2.83	100.00	0.09	6.29	5.9	1450	1.48	0.18	0.14	0.26	65.5	8.9	41	2.20	19.5
RG11-008		2.75	98.59	0.07	6.61	0.3	2120	1.81	0.17	1.33	0.21	62.0	4.1	9	3.13	12.2
RG11-009		3.62	98.44	0.03	7.39	4.7	2760	2.02	0.21	0.15	0.18	55.7	5.5	16	4.48	19.7
RG11-010		3.84	98.54	0.05	7.17	3.7	2490	1.96	0.12	0.10	0.20	44.6	9.8	31	3.92	44.4
RG11-011		6.26	98.37	0.07	7.22	4.1	2040	1.75	0.09	5.08	0.20	79.2	22.0	42	3.44	49.2
RG11-012		4.80	98.49	0.03	7.44	13.7	2220	1.74	0.07	0.39	0.48	76.7	13.1	53	3.41	34.0
RG11-013		1.28	99.03	0.02	6.00	7.9	2020	1.38	0.13	0.27	0.04	62.2	1.8	8	0.58	7.9
RG11-014		4.02	99.59	0.06	7.25	10.9	2170	2.02	0.13	0.35	0.22	91.9	8.0	19	3.69	21.3
RG11-015		4.51	100.00	0.14	6.28	12.4	640	1.73	0.22	0.45	0.29	49.5	12.2	36	3.21	35.7
RG11-016		1.91	98.60	0.06	6.55	5.0	1770	1.63	0.15	0.96	0.13	58.4	4.9	11	1.84	14.3
RG11-017		1.84	99.98	0.05	6.41	5.8	1560	1.34	0.11	0.60	0.15	46.2	4.9	11	1.51	11.4
RG11-018		3.54	98.44	0.08	5.48	10.5	1660	1.40	0.12	0.58	0.28	53.1	9.2	56	2.74	18.7
RG11-019		2.18	100.10	0.05	6.15	2.6	1620	1.31	0.18	0.12	0.17	59.9	4.6	12	1.90	17.3



ALS Canada Ltd.
 2103 Dollarton Hwy
 North Vancouver BC V7H 0A7
 Téléphone: 604 984 0221 Télécopieur: 604 984 0218
 www.alsglobal.com

A: CONSULTANTS INLANDSIS
 C.P. 60, SUCC. "R"
 MONTRÉAL QC H2S 3K6

Page: 2 - C
 Nombre total de pages: 2 (A - E)
 plus les pages d'annexe
 Finalisée date: 12-JUIN-2011
 Compte: INLCON

Projet: RG11

CERTIFICAT D'ANALYSE VO11072419

Description échantillon	Méthode élément unités L.D.	ME-MS61	ME-MS61	ME-MS61	ME-MS61	ME-MS61	ME-MS61	ME-MS61	ME-MS61	ME-MS61	ME-MS61	ME-MS61	ME-MS61	ME-MS61	ME-MS61	
		Fe %	Ga ppm	Ge ppm	Hf ppm	In ppm	K %	La ppm	Li ppm	Mg %	Mn ppm	Mo ppm	Na %	Nb ppm	Ni ppm	P ppm
		0.01	0.05	0.05	0.1	0.005	0.01	0.5	0.2	0.01	5	0.05	0.01	0.1	0.2	10
BC10-01		5.08	19.80	0.10	1.2	0.083	0.41	5.9	15.1	1.17	889	1.58	3.50	2.5	135.5	350
BC10-02		9.45	17.10	0.14	1.9	0.149	0.85	5.5	21.1	3.14	1580	0.25	2.28	3.7	18.8	670
BC10-03		10.80	25.1	0.18	1.4	0.130	1.00	7.0	24.5	3.03	1550	0.37	1.25	4.1	13.8	620
RG11-001		2.84	16.20	0.10	4.7	0.053	1.91	34.0	27.4	0.57	507	1.30	1.36	7.1	12.0	260
RG11-002		1.94	14.95	0.10	4.9	0.062	2.26	33.3	29.4	0.59	279	1.57	1.34	7.1	9.6	200
RG11-003		4.60	21.5	0.13	2.3	0.054	2.73	34.5	47.4	1.91	338	2.10	0.64	9.5	52.3	310
RG11-004		3.11	18.55	0.12	5.8	0.090	1.80	35.2	26.7	0.81	192	5.03	1.55	7.2	12.2	160
RG11-005		3.90	22.4	0.13	2.4	0.059	3.22	32.5	44.0	1.31	203	2.17	0.24	10.1	29.5	270
RG11-006		4.82	19.85	0.14	2.2	0.047	2.76	31.9	48.1	1.97	331	3.66	0.48	8.9	44.0	400
RG11-007		3.26	15.70	0.12	4.4	0.054	1.54	34.8	27.5	0.98	300	9.48	1.99	8.5	16.1	270
RG11-008		2.32	15.65	0.11	3.8	0.063	3.10	32.6	27.0	0.88	340	1.27	0.53	5.0	6.4	330
RG11-009		2.77	17.20	0.15	3.9	0.069	3.08	27.7	43.0	1.11	373	2.05	0.83	6.7	11.8	380
RG11-010		3.49	18.60	0.15	4.8	0.082	2.81	18.5	46.5	1.40	273	2.79	1.10	5.8	20.0	260
RG11-011		5.11	20.0	0.22	4.9	0.087	2.44	36.4	40.4	1.68	2160	1.49	0.96	6.6	26.0	1430
RG11-012		5.76	20.4	0.23	4.9	0.095	2.14	35.9	43.6	1.85	612	0.73	1.13	6.5	16.9	1580
RG11-013		1.89	13.60	0.15	5.0	0.063	1.21	31.9	12.4	0.44	498	0.49	3.40	6.4	3.8	250
RG11-014		4.18	17.45	0.23	5.0	0.074	3.33	46.6	27.8	0.91	280	2.44	0.89	7.6	18.5	350
RG11-015		3.62	15.85	0.20	3.1	0.064	2.83	26.4	32.4	1.21	378	6.29	0.70	5.8	31.1	370
RG11-016		2.37	13.65	0.16	4.0	0.046	2.09	29.5	19.7	0.66	778	1.22	2.31	5.9	7.2	360
RG11-017		2.15	13.45	0.13	3.2	0.044	1.78	22.5	16.3	0.59	501	0.96	2.63	4.8	7.4	370
RG11-018		3.88	13.55	0.16	1.8	0.037	1.83	29.1	33.7	1.21	442	1.36	0.71	6.2	30.9	2430
RG11-019		1.77	11.45	0.14	5.0	0.051	1.43	31.2	22.3	0.53	275	2.24	2.89	6.9	9.2	290



ALS Canada Ltd.
 2103 Dollarton Hwy
 North Vancouver BC V7H 0A7
 Téléphone: 604 984 0221 Télécopieur: 604 984 0218
 www.alsglobal.com

A: CONSULTANTS INLANDSIS
 C.P. 60 , SUCC. "R"
 MONTRÉAL QC H2S 3K6

Page: 2 - D
 Nombre total de pages: 2 (A - E)
 plus les pages d'annexe
 Finalisée date: 12-JUIN-2011
 Compte: INLCON

Projet: RG11

CERTIFICAT D'ANALYSE VO11072419

Description échantillon	Méthode élément unités L.D.	ME-MS61	ME-MS61	ME-MS61	ME-MS61	ME-MS61	ME-MS61	ME-MS61	ME-MS61	ME-MS61	ME-MS61	ME-MS61	ME-MS61	ME-MS61	ME-MS61	
		Pb ppm	Rb ppm	Re ppm	S %	Sb ppm	Sc ppm	Se ppm	Sn ppm	Sr ppm	Ta ppm	Te ppm	Th ppm	Ti %	Tl ppm	U ppm
BC10-01		9.1	11.1	<0.002	0.96	0.19	26.8	2	1.6	154.0	0.19	0.13	0.5	0.436	0.06	0.2
BC10-02		4.2	38.1	<0.002	3.56	0.09	49.2	3	2.3	116.0	0.27	0.40	0.7	0.978	0.14	0.2
BC10-03		5.9	42.6	<0.002	2.45	0.11	45.7	2	1.3	204	0.26	0.27	0.8	1.020	0.21	0.2
RG11-001		12.4	78.5	<0.002	0.01	0.33	12.3	1	1.6	66.5	0.50	0.05	9.5	0.231	0.41	2.9
RG11-002		11.8	86.2	<0.002	0.01	0.31	11.2	1	1.6	59.4	0.50	<0.05	9.2	0.226	0.48	2.7
RG11-003		16.7	98.4	0.002	1.17	0.87	14.1	1	1.7	34.4	0.63	0.05	10.0	0.353	0.67	4.1
RG11-004		27.1	66.2	0.004	0.89	0.48	13.4	2	2.2	61.3	0.48	0.07	10.5	0.273	0.40	3.5
RG11-005		16.9	110.5	<0.002	<0.01	1.60	14.4	1	1.8	63.4	0.69	0.05	10.0	0.392	0.67	3.1
RG11-006		21.1	103.5	0.003	1.69	2.23	13.2	1	1.5	25.2	0.60	<0.05	8.8	0.337	0.63	3.0
RG11-007		27.0	63.3	<0.002	0.51	0.60	11.1	1	1.5	121.0	0.58	0.06	10.2	0.310	0.37	3.7
RG11-008		20.7	119.0	0.002	0.62	0.34	11.9	1	1.3	60.4	0.34	0.09	9.6	0.297	0.64	2.5
RG11-009		17.9	129.5	0.005	0.87	0.29	16.4	2	1.4	54.6	0.49	0.06	8.3	0.254	0.74	2.8
RG11-010		14.5	130.0	0.003	0.85	0.26	16.1	2	2.1	62.7	0.39	0.05	8.3	0.330	0.61	3.0
RG11-011		8.9	102.5	0.004	1.34	0.27	27.5	3	1.9	266	0.44	<0.05	8.6	0.735	0.54	2.1
RG11-012		7.2	86.9	0.002	0.15	0.31	26.9	2	2.7	67.8	0.46	<0.05	9.5	0.657	0.39	3.0
RG11-013		21.1	38.4	0.002	<0.01	0.30	12.2	1	1.9	104.5	0.44	<0.05	10.6	0.201	0.16	3.4
RG11-014		20.3	146.5	<0.002	0.29	0.82	12.5	2	2.3	66.2	0.59	<0.05	20.8	0.242	0.74	6.1
RG11-015		26.3	127.5	0.006	1.80	1.50	17.4	2	2.1	41.4	0.38	0.08	9.3	0.300	0.67	4.7
RG11-016		18.7	78.8	<0.002	0.39	0.29	11.7	1	1.8	158.5	0.44	<0.05	12.0	0.211	0.37	3.5
RG11-017		16.4	67.2	0.003	0.38	0.32	11.2	1	1.6	170.0	0.36	<0.05	10.5	0.220	0.30	3.0
RG11-018		15.5	86.3	0.002	0.70	0.63	10.5	1	1.6	94.5	0.40	<0.05	8.1	0.231	0.38	3.3
RG11-019		15.9	64.7	0.003	0.68	0.25	12.0	1	1.7	126.5	0.48	0.07	10.6	0.211	0.29	3.5



ALS Canada Ltd.
 2103 Dollarton Hwy
 North Vancouver BC V7H 0A7
 Téléphone: 604 984 0221 Télécopieur: 604 984 0218
 www.alsglobal.com

À: CONSULTANTS INLANDSIS
 C.P. 60 , SUCC. "R"
 MONTRÉAL QC H2S 3K6

Page: 2 - E
 Nombre total de pages: 2 (A - E)
 plus les pages d'annexe
 Finalisée date: 12-JUIN-2011
 Compte: INLCON

Projet: RG11

CERTIFICAT D'ANALYSE VO11072419

Description échantillon	Méthode élément unités L.D.	ME-MS61	ME-MS61	ME-MS61	ME-MS61	ME-MS61
		V ppm 1	W ppm 0.1	Y ppm 0.1	Zn ppm 2	Zr ppm 0.5
BC10-01		222	0.6	12.5	66	41.3
BC10-02		444	1.1	22.2	156	63.6
BC10-03		629	0.7	22.2	157	52.5
RG11-001		49	0.5	22.0	68	169.5
RG11-002		37	0.4	21.9	44	188.0
RG11-003		146	1.0	11.7	109	86.7
RG11-004		76	0.8	19.7	55	226
RG11-005		157	1.1	9.9	76	86.3
RG11-006		136	0.9	10.8	97	78.5
RG11-007		90	0.9	28.6	56	176.0
RG11-008		43	0.7	30.5	78	144.0
RG11-009		50	0.6	23.6	76	125.0
RG11-010		87	0.7	24.7	71	165.5
RG11-011		179	0.6	39.9	96	204
RG11-012		188	0.6	30.5	95	181.5
RG11-013		26	0.5	31.4	28	171.5
RG11-014		59	0.9	42.3	70	151.0
RG11-015		103	0.8	30.2	103	91.7
RG11-016		44	0.7	31.1	64	116.5
RG11-017		49	0.8	24.0	64	94.6
RG11-018		95	1.0	22.0	72	69.7
RG11-019		37	0.4	28.3	50	167.0

***** Voir la page d'annexe pour les commentaires en ce qui concerne ce certificat *****



ALS Canada Ltd.
2103 Dollarton Hwy
North Vancouver BC V7H 0A7
Téléphone: 604 984 0221 Télécopieur: 604 984 0218
www.alsglobal.com

A: CONSULTANTS INLANDSIS
C.P. 60, SUCC. "R"
MONTRÉAL QC H2S 3K6

Page: Annexe 1
Total # les pages d'annexe: 1
Finalisée date: 12-JUIN-2011
Compte: INLCON

Projet: RG11

CERTIFICAT D'ANALYSE VO11072419

Méthode	COMMENTAIRE DE CERTIFICAT
ME-MS61	L'analyse des terres rares peut être partiellement soluble avec cette méthode.