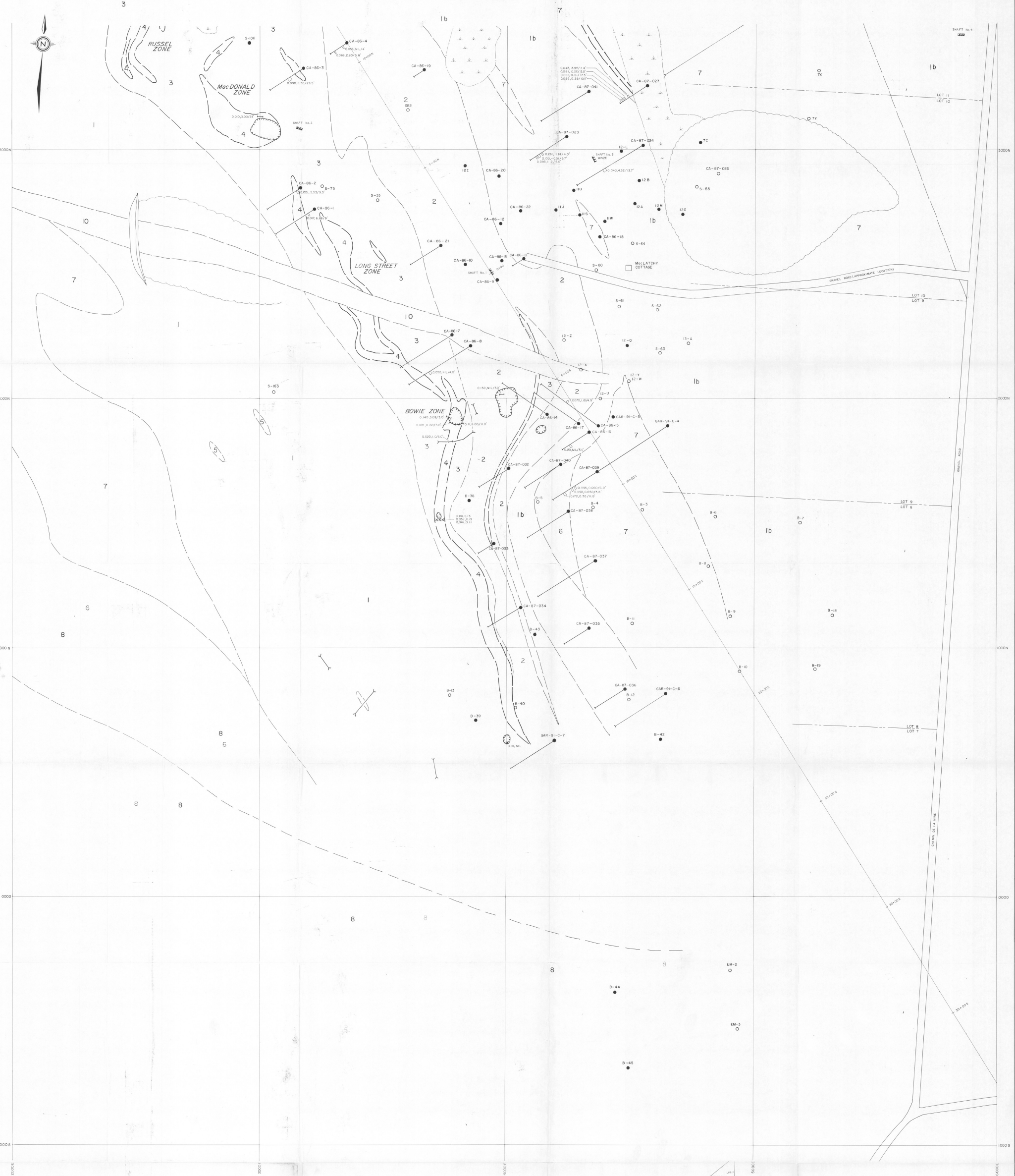


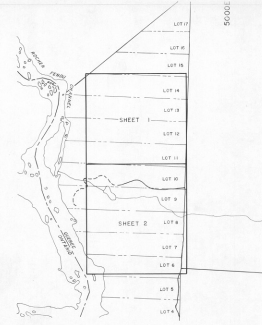
Division de l'Énergie et des Ressources
Projet de loi 110
DATE 11 JU 1997
MAP 11 M 051128

GARDE MINING AND EXPLORATION COMPANY INC.	
GRAND CALUMET PROJECT PROVINCE OF QUEBEC COMPILATION MAP NORTH SHEET	
DATE FEB .91	NTS 31 F 10
PROJECT Q-89-2(160-407)	MAPPED/DRAWN BY R.E.C./A.P.S.
SCALE 1"=100'	100 200 300
TAIGA CONSULTANTS LTD	MAP 1



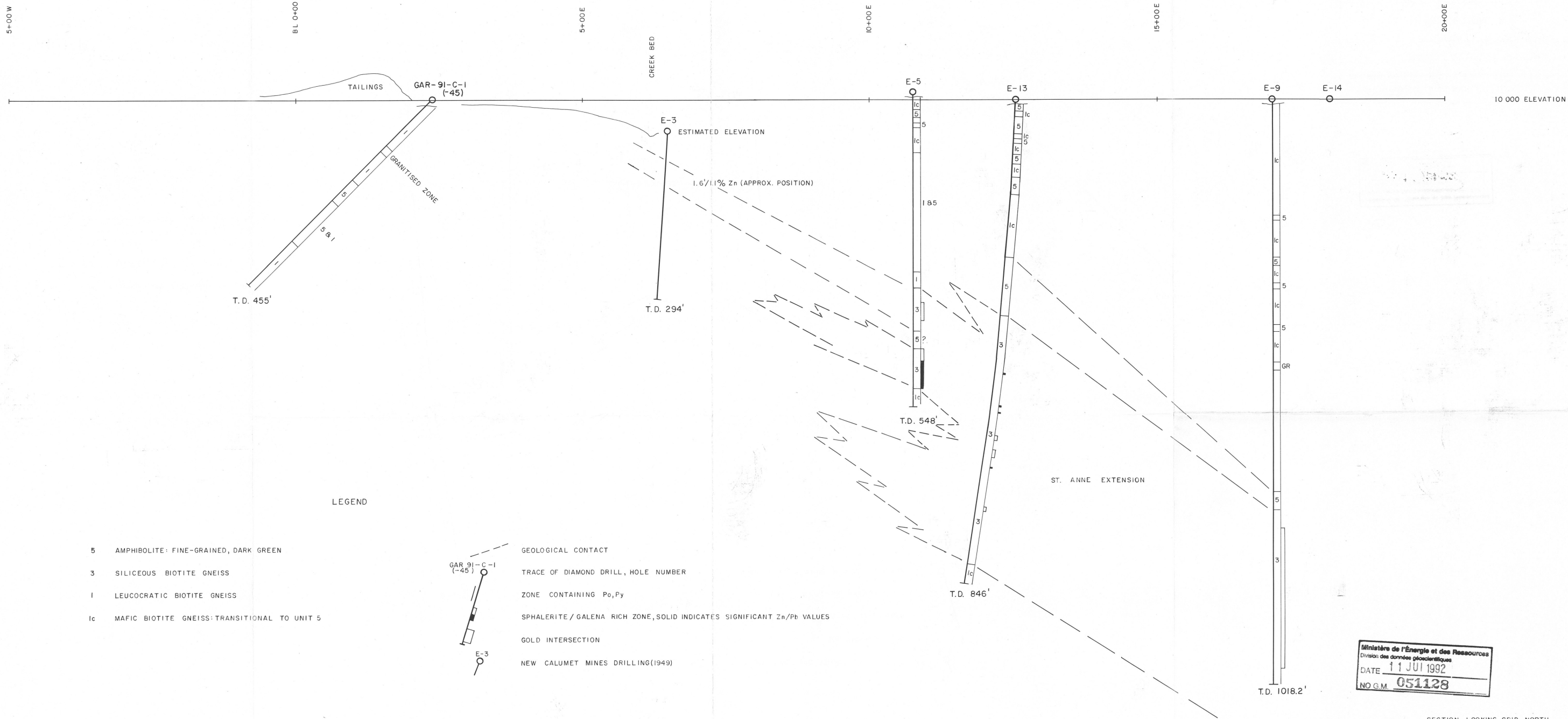
- FAULT (ASSUMED)
GEOLOGICAL CONTACT
GARDE DRILL HOLE
LACUNA DRILL HOLE
NEW (ALUMINE MINES, SUGAR, COAL)
OLD (ALUMINE MINES, SUGAR, COAL) (AVAILABLE)
BASE METAL ZN/PB INTERSECTION
SIGNIFICANT BASE METAL INTERSECTION
GOLD INTERSECTION - WIDTH, 0.2/0.4
PIT OR TRENCH
TRENCH
CHIP SAMPLE, Au/Ag, Ag/Ag, Au/Ag
DRILL SAMPLE, Au/Ag, Ag/Ag, Au/Ag
SHAFT
VENTILATION RAISE OR SHAFT
TAILINGS
SWAMP
LOT LINES

- 10 DIABASE
9 MARBLE - CALCAREOUS TO SOLOMITIC
8 PUMPHOBOLASTIC HORNBLENDE GNEISS
7 HORNBLENDE-BIOTITE GNEISS FINE GRAINED, POORLY TO MODERATELY FOLIATED
6 AMPHIBOLITE FINE GRAINED DARK GREEN
5 MINERALIZED AND/OR ALTERED ZONES INCLUDES:
WEATHERED SULPHIDES: COARSE GRAINED SHALITE AND CALERA IN CALCITE MATRIX ± Pb, Pb, Fe
WHITE SERRONITE ZONE: 60% CALCITE ± SULPHIDES, CALC-SILICATE MINERALS
Pb-C-SULPHATE ROCK: CALC-AMPHIBOLITE, COARSE, COARSE BIOTITE, NON-FOLIATED TO POORLY FOLIATED, ± DISSEMINATED SULPHIDES
COARSE BIOTITE BLENDED NON-FOLIATED TO MODERATELY FOLIATED, ± CALC-SILICATE MINERALS, WEGMITE, QUARTZ-BIOTITE-GARNET-CALC-AMPHIBOLITE ROCK, AMPHIBOLITE HORIZON
3 SILICIOUS BIOTITE GNEISS: MOST MINERALIZED AND ALTERED ZONES, AMPHIBOLITE, MODERATELY TO WELL FOLIATED, LOCALLY W, W, Pb, Pb, Fe
2 CARBONATE AMPHIBOLITE: HARDEN WALL, WEATHERS TO WHITE, WEATHERS TO WHITE, WEATHERS TO WHITE
1 (LEUCOGRANITE) QUARTZ-BIOTITE GNEISS: POST-ORIGINALLY WELL FOLIATED AND LINEATED ± GARNETS
10 QUARTZ-BIOTITE GNEISS: LEUCOGRANITE TO MELANOCRATIC, WELL FOLIATED AND LINEATED ± GARNETS
MAGNETIC ROCK: 25%-60% FINE GRAINED MAGNETITE, ± Pb, Pb, Fe, W, W, Pb, Pb, Fe



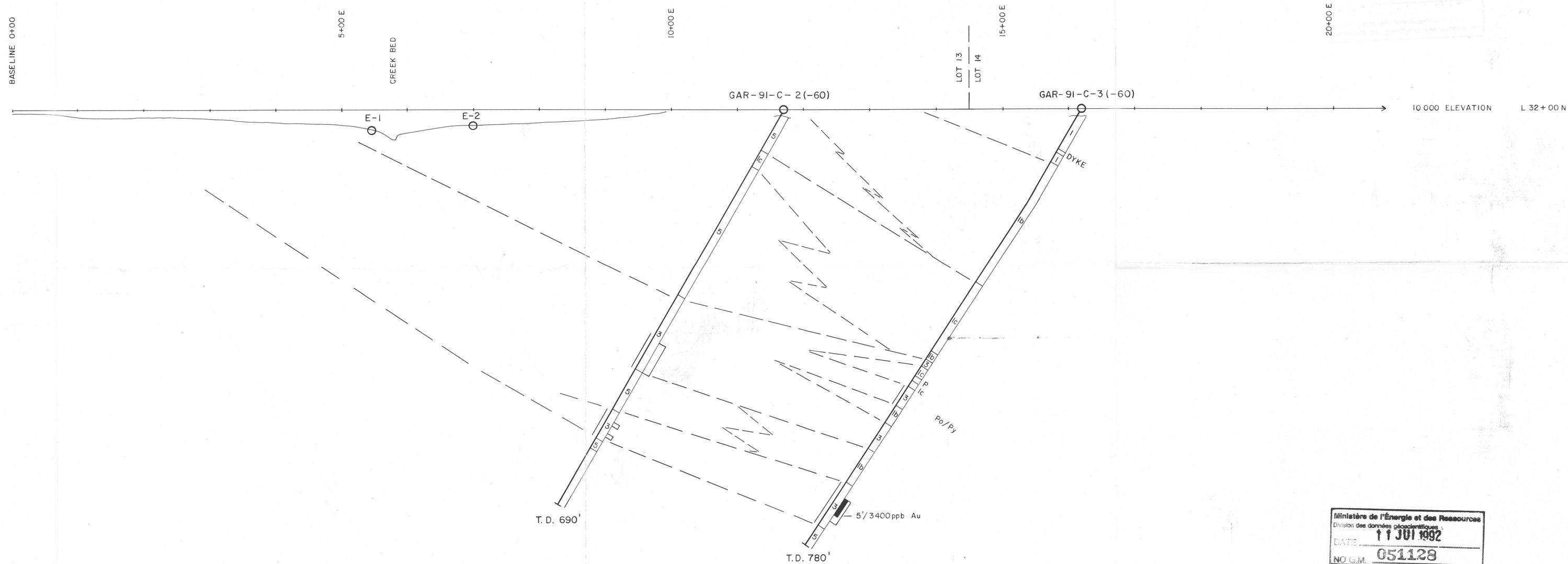
Division de l'Énergie et des Ressources
Ministère des Ressources naturelles
DATE: 11 JUL 1992
NO. 051125

GARDE MINING AND EXPLORATION COMPANY INC.
GRAND CALUMET PROJECT
PROVINCE OF QUEBEC
COMPILATION MAP
SOUTH SHEET
DATE FEB, 91 NTS 31 F 10
PROJECT Q-89-2(60-407) MAPPEL/ DRAWN BY R.E.C./A.P.S.
SCALE 1"=100' 0 100 200 300
TAIGA CONSULTANTS LTD MAP 2



Ministère de l'énergie et des Ressources
Division des données géologiques
DATE 11 JUL 1992
NO G.M. 051128

SECTION LOOKING GRID NORTH	
GARDE MINING AND EXPLORATION COMPANY INC.	
GRAND CALUMET PROJECT PROVINCE OF QUEBEC SECTION I	
DATE FEB. , 91	NTS 31 F 10
PROJECT Q-89-2(60-407)	MAPPED/ DRAWN BY R.E.C. / A.P.S.
SCALE 1"= 100' 0	100 200 300'
TAIGA CONSULTANTS LTD	MAP 1



LEGEND

- 5 AMPHIBOLITE: FINE-GRAINED, DARK GREEN
- 3 SILICEOUS BIOTITE GNEISS: WELL FOLIATED, SILICEOUS, MANY THIN QUARTZ LENSES (CHERT) AND THIN COARSE-GRAINED BIOTITE LENSES
- 1 LEUCOCRATIC QUARTZ BIOTITE GNEISS: WELL FOLIATED, LEUCOCRATIC \pm GARNET
- 1b QUARTZ BIOTITE GNEISS: AS ABOVE BUT > 30% BIOTITE
- 1c MAFIC BIOTITE GNEISS: TRANSITION TO UNIT 5

- GEOLOGIC CONTACT
- GAR-91-C-3(-60)
- GARDE DIAMOND DRILL HOLE (INCLINATION OF HOLE)
- ZONE CONTAINING Po, Py
- SPHALERITE / GALENA
- GOLD INTERSECTION

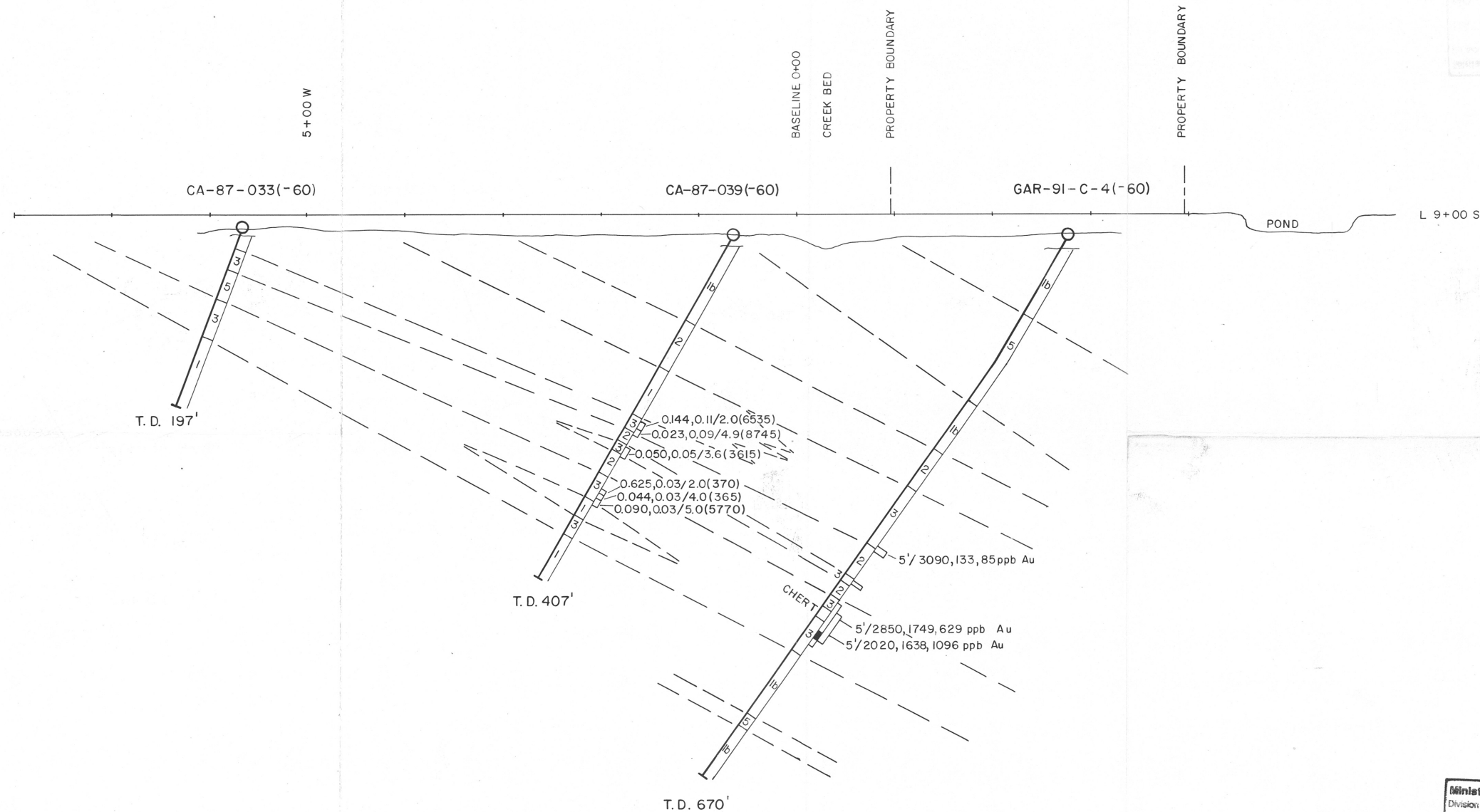
Ministère de l'Énergie et des Ressources
Division des données géoscientifiques
DATE 11 JUL 1992
NO G.M. 051128

SECTION LOOKING GRID NORTH

GARDE MINING AND EXPLORATION COMPANY INC.

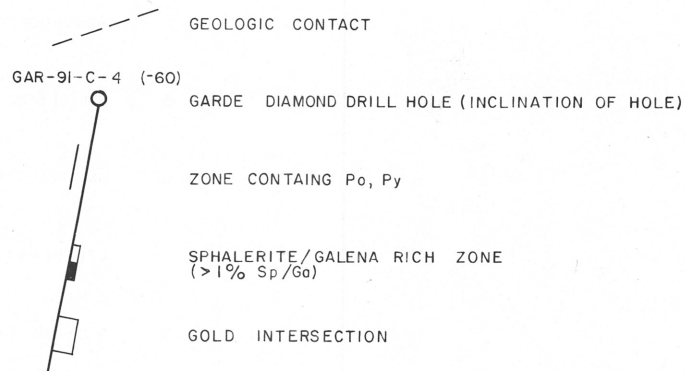
GRAND CALUMET PROJECT
PROVINCE OF QUEBEC
SECTION 2

DATE FEB., 91	NTS 31 F 10
PROJECT Q-89-2(60-407)	MAPPED/ DRAWN BY R.E.C./A.P.S.
SCALE 1"=100' 0	100 200 300'
TAIGA CONSULTANTS LTD	MAP 2



LEGEND

- 5 AMPHIBOLITE: FINE-GRAINED, DARK GREEN
- 3 SILICEOUS BIOTITE GNEISS
- 2 AMPHIBOLITE: CARBONATED
- 1 LEUCOCRATIC BIOTITE GNEISS
- 1b BIOTITE GNEISS



Ministère de l'Énergie et des Ressources
Division des données géoscientifiques
DATE 11 JUL 1992
NO G.M. 051128

SECTION LOOKING GRID NORTH

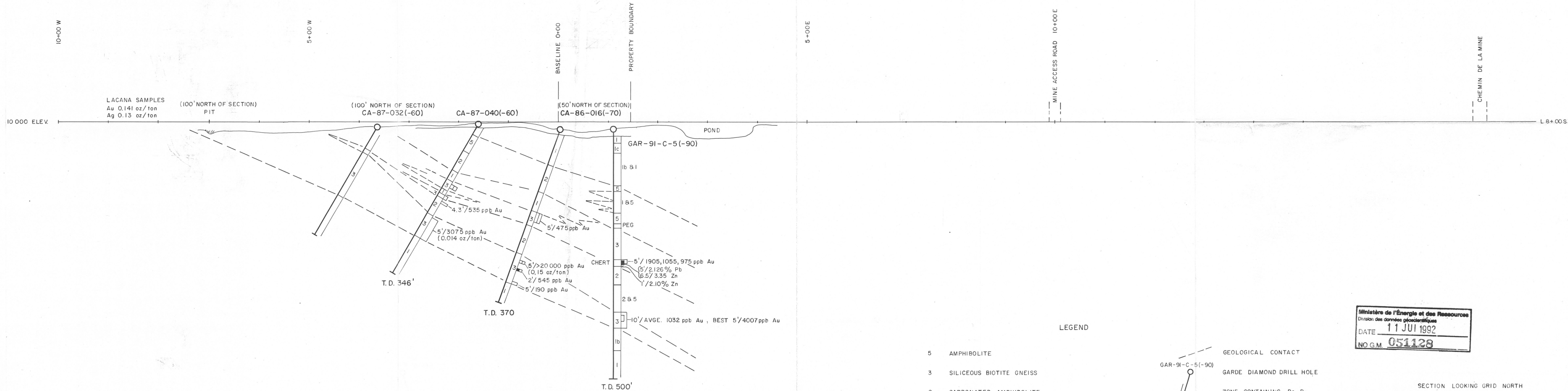
GARDE MINING AND EXPLORATION COMPANY INC.

GRAND CALUMET PROJECT PROVINCE OF QUEBEC SECTION 3

DATE FEB. ,91 NTS 31 FIO
PROJECT Q-89-2(60-407) MAPPED/DRAWN BY R.E.C./A.P.S.

SCALE 1"=100' 0 100 200 300'

TAIGA CONSULTANTS LTD MAP 3



LEGEND

- 5 AMPHIBOLITE
- 3 SILICEOUS BIOTITE GNEISS
- 2 CARBONATED AMPHIBOLITE
- 1 LEUCOCRATIC BIOTITE GNEISS
- 1b BIOTITE GNEISS
- 1c MAFIC BIOTITE GNEISS: TRANSITIONAL TO UNIT 5

- GEOLGICAL CONTACT
- GARDE DIAMOND DRILL HOLE
- ZONE CONTAINING Po, Py
- SPHALERITE/GALENA RICH ZONE Zn > 1%
- GOLD INTERSECTION
- LACANA DIAMOND DRILL HOLE (1987)

Ministère de l'Énergie et des Ressources
Division des données géoscientifiques
DATE 11 JUL 1992
NO G.M. 051128

SECTION LOOKING GRID NORTH

GARDE MINING AND EXPLORATION COMPANY INC.

GRAND CALUMET PROJECT
PROVINCE OF QUEBEC
SECTION 4

DATE FEB. 91	NTS 31 F 10
PROJECT Q-89-2(60-407)	MAPPED/DRAWN BY R.E.C./A.P.S.
SCALE 1" = 100' 0 100 200 300'	
TAIGA CONSULTANTS LTD	MAP 4

