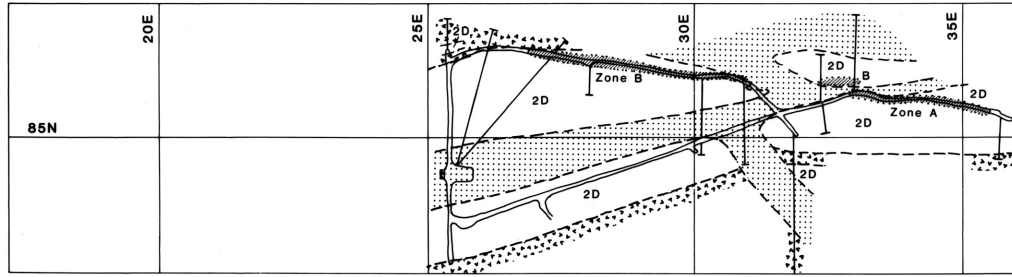
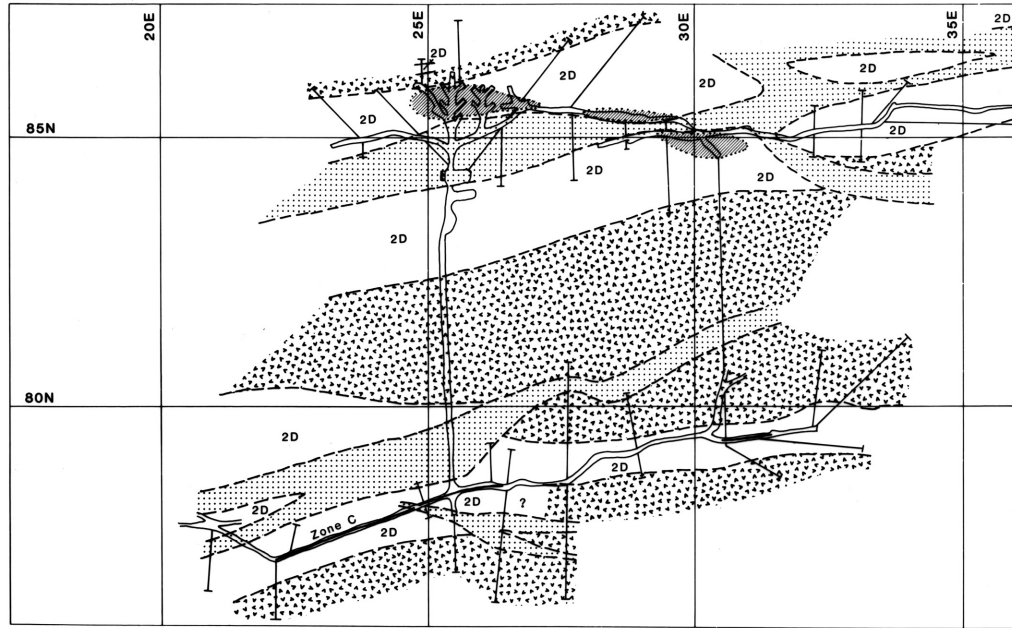


# MINE LOUVICOURT GOLDFIELD

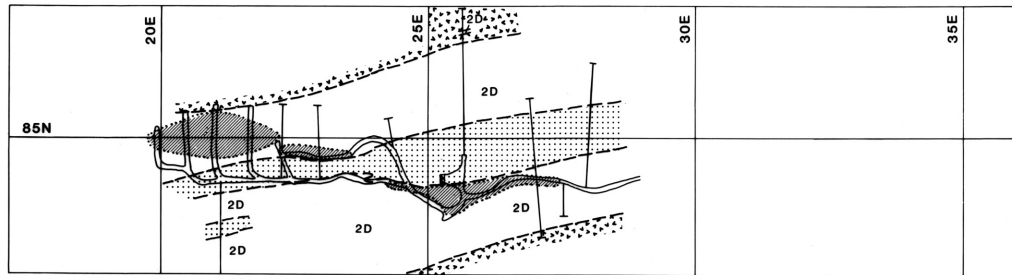
## PLANS GEOLOGIQUES



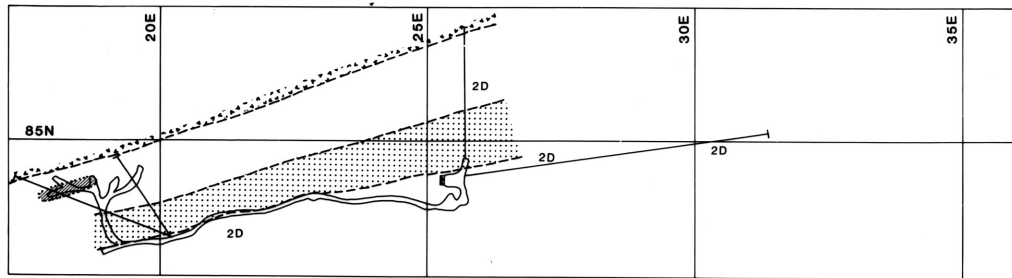
étage 225



étage 375

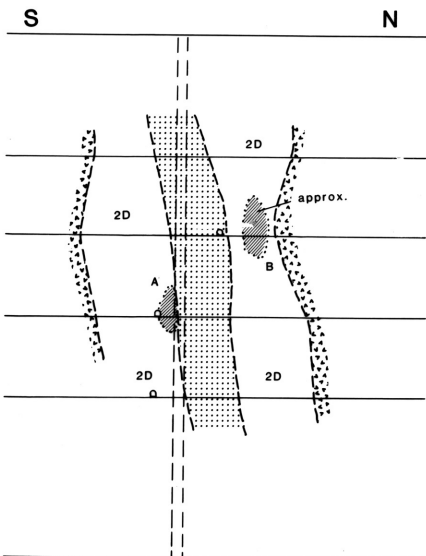


étage 525



étage 675

## COUPE TRANSVERSALE NS sur 25E



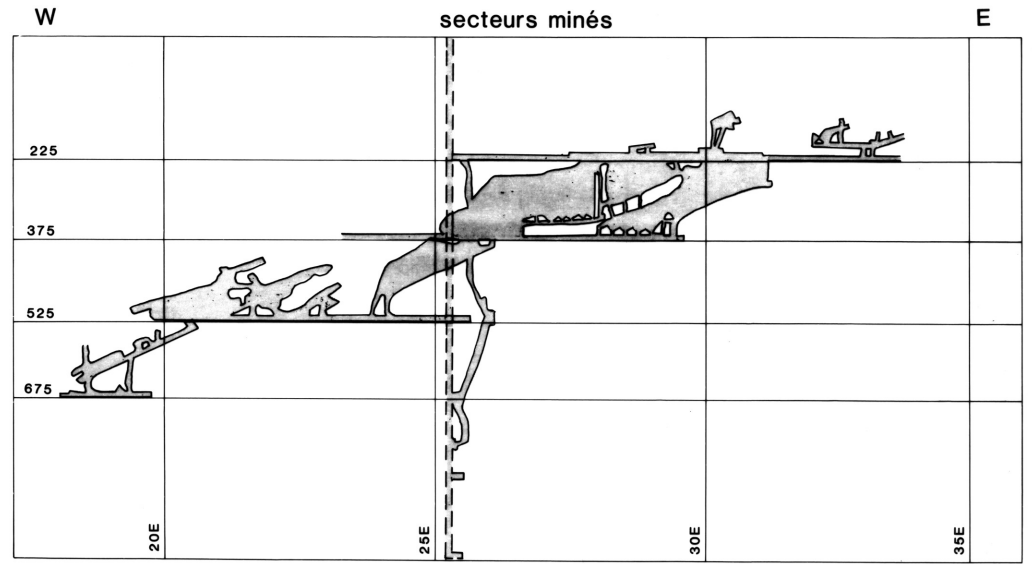
## — LEGENDE —

- Roches volcaniques
- Diorite - gabbro
- Porphyre felsique
- Zones enrichies en veines et veinules d'or
- Secteurs exploités

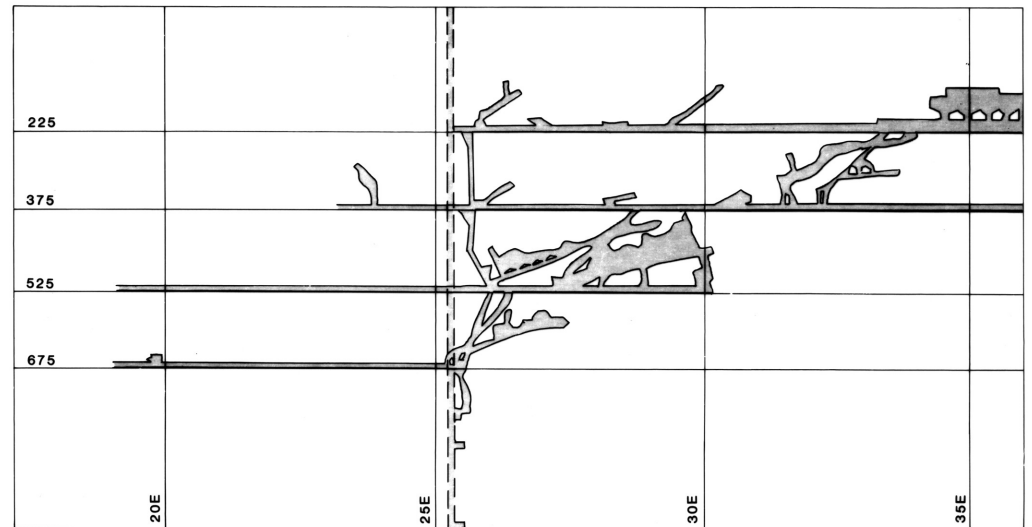


Figure 6

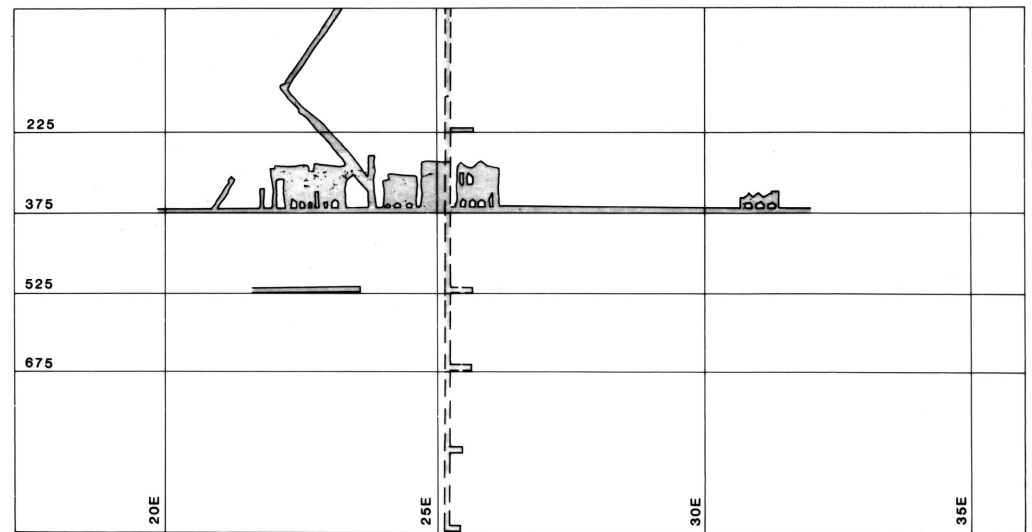
## COUPES LONGITUDINALES



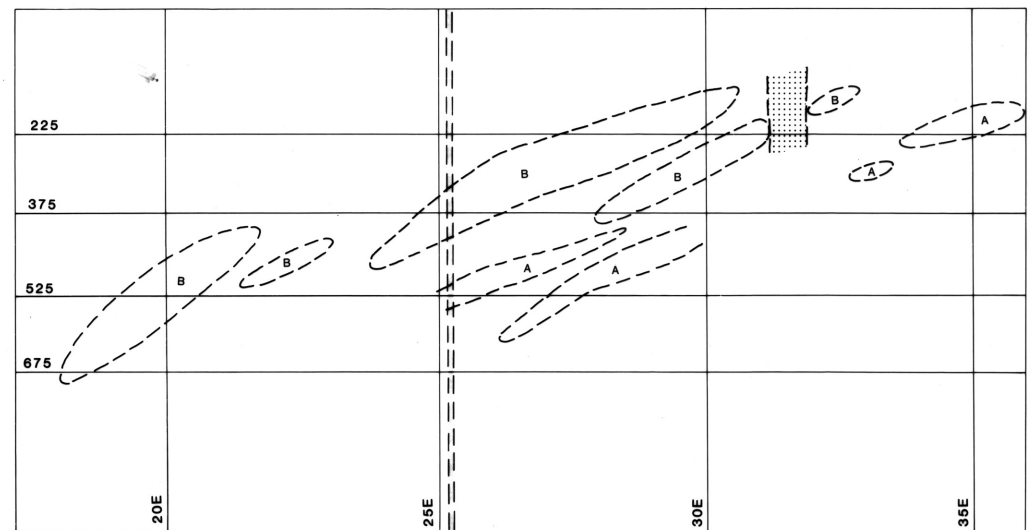
secteurs minés  
zones B, au nord du porphyre



zones A, au sud du porphyre



zones C (150 mètres au sud)



zones A et B généralisées et superposées