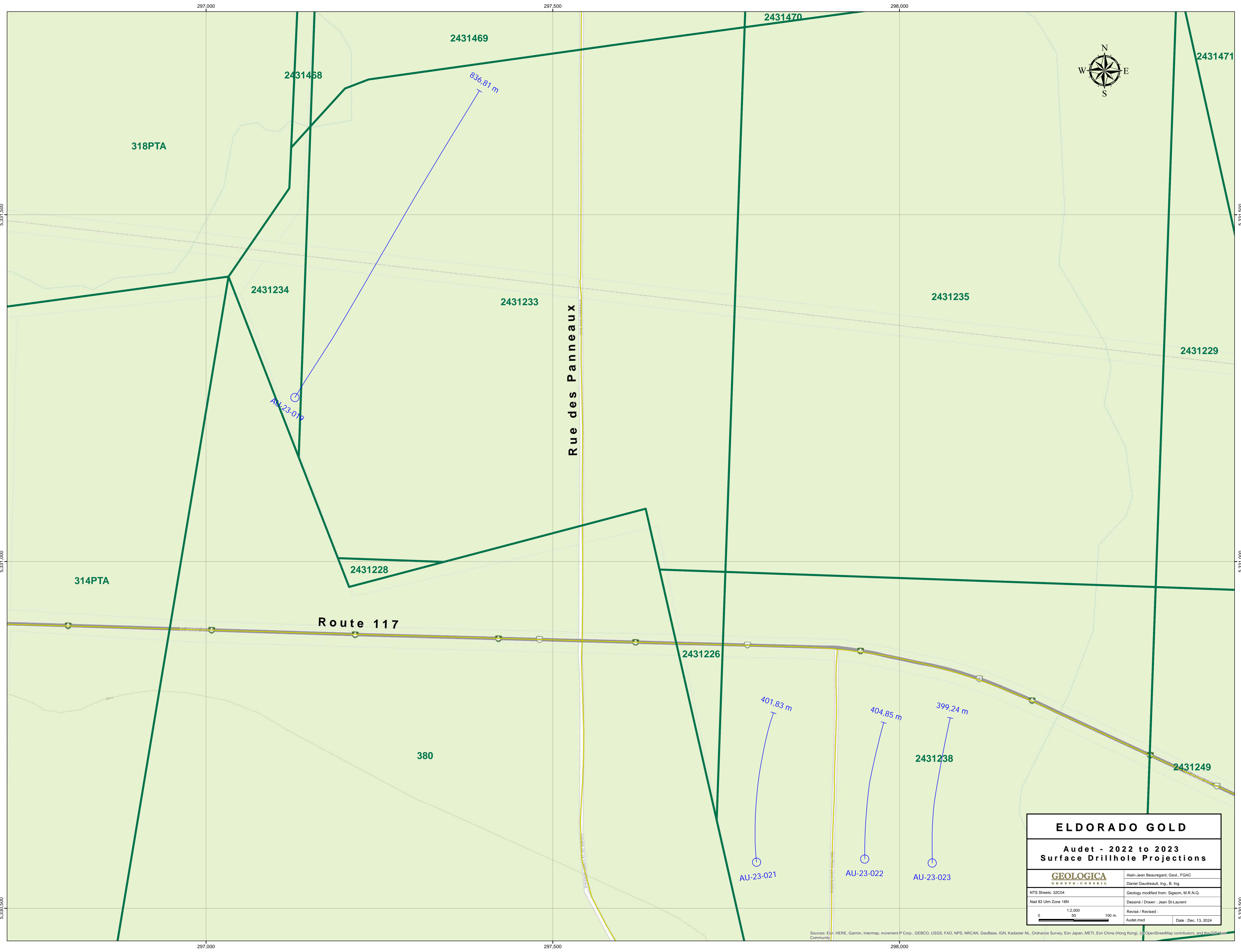


• Mineralized zone

□ Eldorado Gold Claim

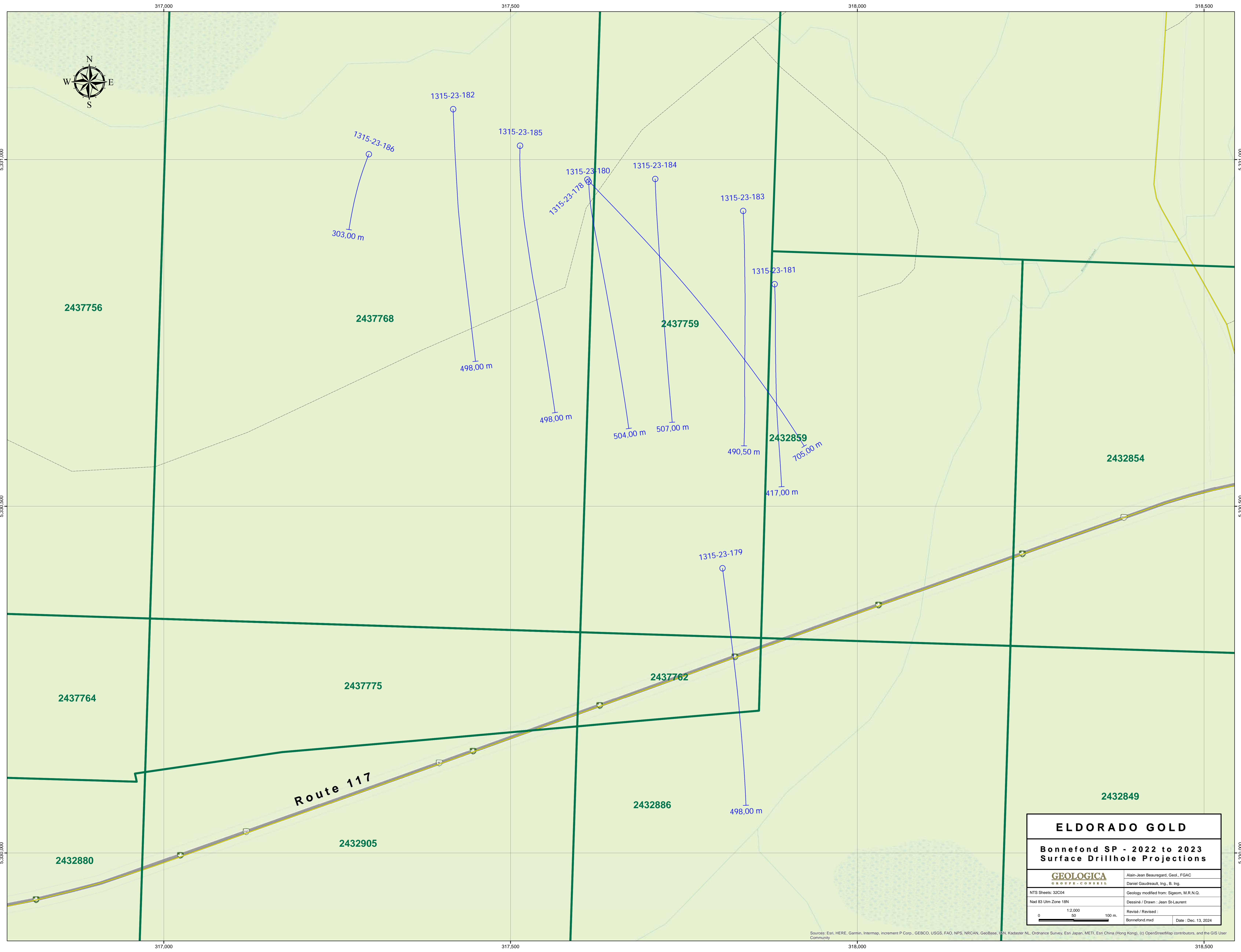
<b>ELDORADO GOLD</b>	
<b>2022 to 2023 Drill Hole Surface Programs</b>	
<b>GEOLOGICA</b> GROUPE - CONSEIL	Alain-Jean Beaugerard, Geol., FGAC Daniel Gaudreault, Ing., B. Ing.
NTS Sheets: 32C04 Nad 83 Utm Zone 18N	Geology modified from: Sigeom, M.R.N.Q. Dessiné / Drawn : Jean St-Laurent
0 1:50,000 1 2 Km.	Revisé / Revised : Map-01.mxd Date : Dec. 13, 2024

Sources: Esri, HERE, Garmin, Intermap, increment P Corp., GEBCO, USGS, FAO, NPS, NRCAN, GeoBase, IGN, Kadaster NL, Ordnance Survey, Esri Japan, METI, Esri China (Hong Kong), (c) OpenStreetMap contributors, and the GIS User Community



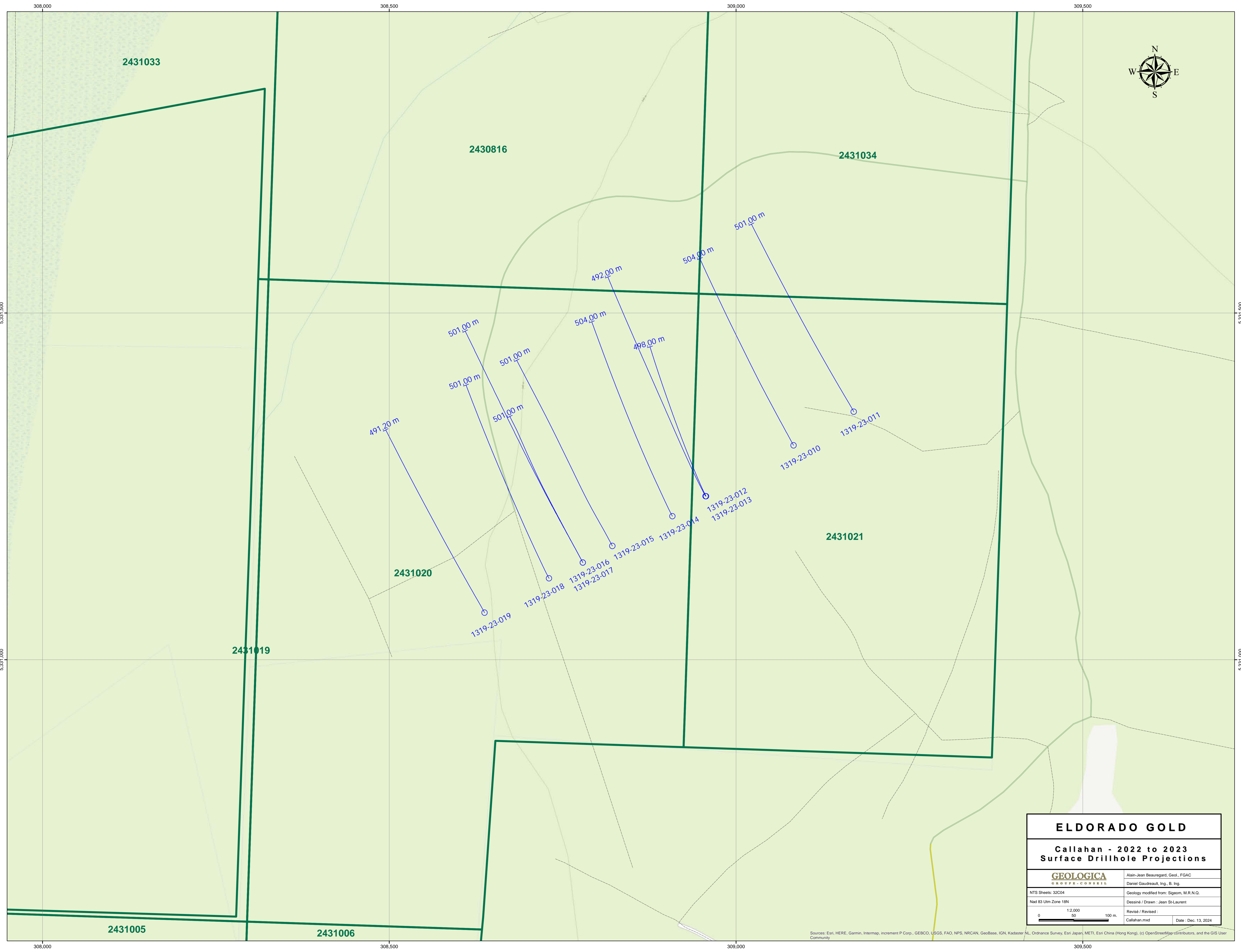
<b>ELDORADO GOLD</b>	
<b>Audet - 2022 to 2023 Surface Drillhole Projections</b>	
<b>GEOLOGICA</b> <small>G R O U P P E - C O N S E I L</small>	Alain-Jean Beaugregard, Geol., FGAC Daniel Gaudreault, Ing., B. Ing.
NTS Sheets: 32C04 Nad 83 Utm Zone 18N	Geology modified from: Sigeom, M.R.N.Q. Dessiné / Drawn : Jean St-Laurent
0 12,000 50 100 m.	Revisé / Revised : Audet.mxd Date : Dec. 13, 2024

Sources: Esri, HERE, Garmin, Intermap, increment P Corp., GEBCO, USGS, FAO, NPS, NRCAN, GeoBase, IGN, Kadaster NL, Ordnance Survey, Esri Japan, METI, Esri China (Hong Kong), Swisstopo, Mapbox, OpenStreetMap contributors, and the GIS User Community



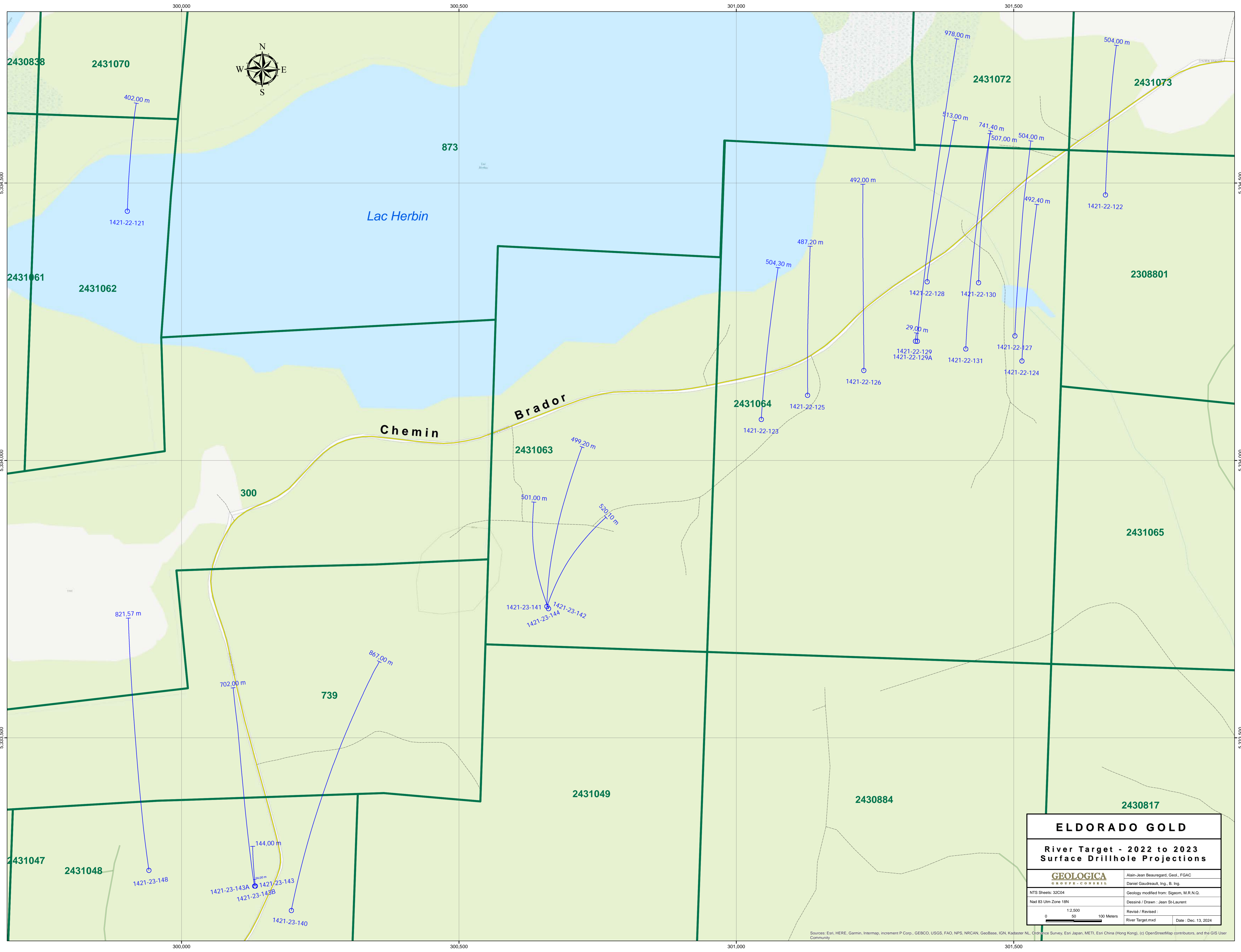
<b>ELDORADO GOLD</b>	
<b>Bonnefond SP - 2022 to 2023 Surface Drillhole Projections</b>	
<b>GEOLOGICA</b> <small>G R O U P E - C O N S E I L</small>	Alain-Jean Besuregard, Geol., FGAC Daniel Gaudreau, Ing., B. Ing.
NTS Sheets: 32C04 Nad 83 Utm Zone 18N	Geology modified from: Sigeom, M.R.N.Q. Dessiné / Drawn : Jean St-Laurent
1:2,000 0 50 100 m	Revisé / Revised : Bonnefond.mxd Date : Dec. 13, 2024

Sources: Esri, HERE, Garmin, Intermap, increment P Corp., GEBCO, USGS, FAO, NPS, NRCAN, GeoBase, IGN, Kadaster NL, Ordnance Survey, Esri Japan, METI, Esri China (Hong Kong), (c) OpenStreetMap contributors, and the GIS User Community.



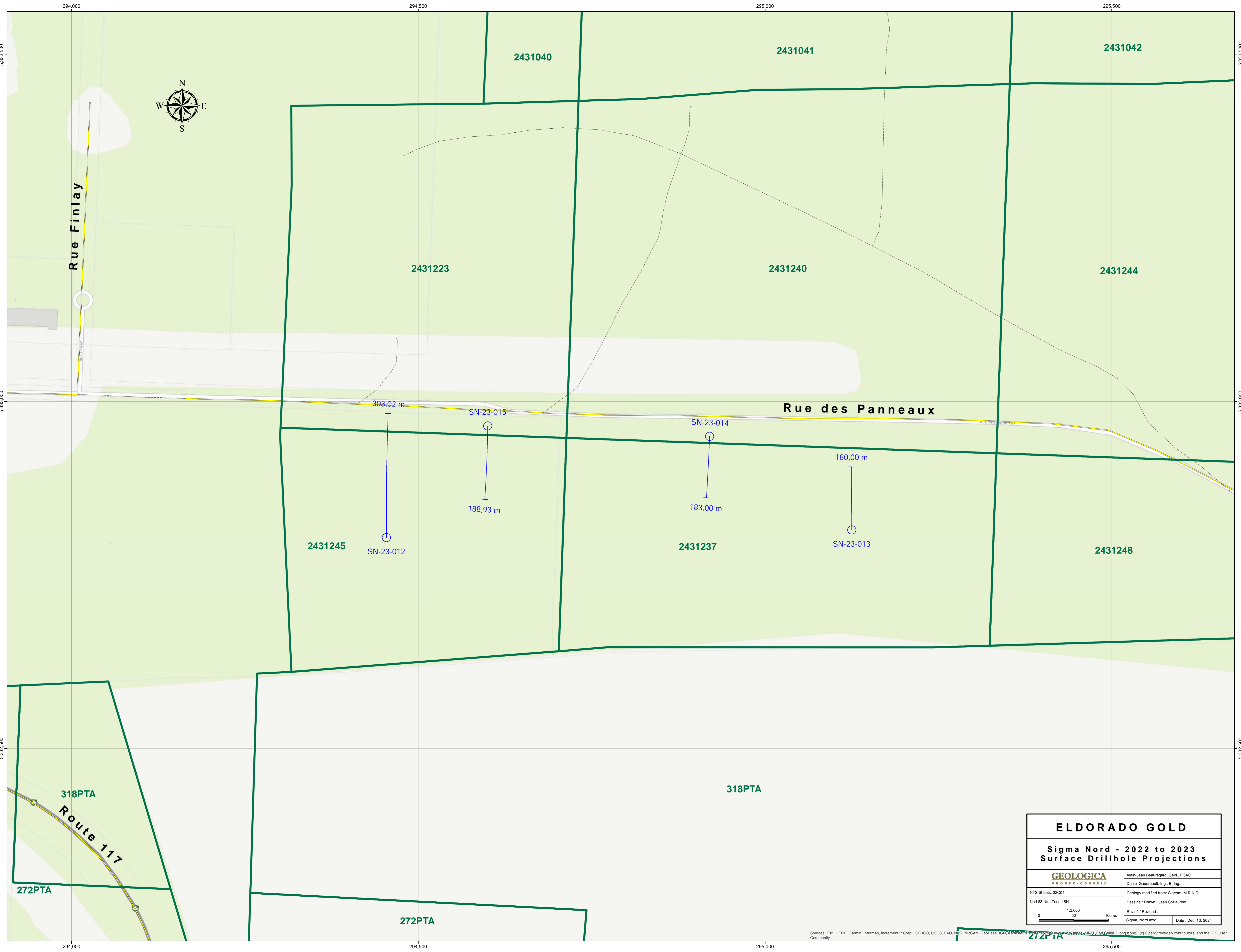
<b>ELDORADO GOLD</b>	
<b>Callahan - 2022 to 2023 Surface Drillhole Projections</b>	
<b>GEOLOGICA</b> <small>G R O U P E - C O N S E I L</small>	Alain-Jean Besuregard, Geol., FGAC Daniel Gaudreault, Ing., B. Ing.
NTS Sheets: 32C04 Nad 83 Utm Zone 18N	Geology modified from: Sigeom, M.R.N.Q. Dessiné / Drawn : Jean St-Laurent
1:2,000 0 50 100 m.	Revisé / Revised : Callahan.mxd Date : Dec. 13, 2024

Sources: Esri, HERE, Garmin, Intermap, increment P Corp., GEBCO, USGS, FAO, NPS, NRCAN, GeoBase, IGN, Kadaster NL, Ordnance Survey, Esri Japan, METI, Esri China (Hong Kong), (c) OpenStreetMap contributors, and the GIS User Community.



<b>ELDORADO GOLD</b>	
<b>River Target - 2022 to 2023 Surface Drillhole Projections</b>	
<b>GEOLOGICA</b> <small>G R O U P - C O N S E I L</small>	Alain-Jean Beaugregard, Geol., FGAC Daniel Gaudreault, Ing., B. Ing.
NTS Sheets: 32C04 Nad 83 Utm Zone 18N	Geology modified from: Sigeom, M.R.N.Q. Dessiné / Drawn : Jean St-Laurent
1:2,500 0 50 100 Meters	Revisé / Revised : River Target.mxd Date : Dec. 13, 2024

Sources: Esri, HERE, Garmin, Intermap, increment P Corp., GEBCO, USGS, FAO, NPS, NRCAN, GeoBase, IGN, Kadaster NL, Ordnance Survey, Esri Japan, METI, Esri China (Hong Kong), (c) OpenStreetMap contributors, and the GIS User Community.



<b>ELDORADO GOLD</b>	
<b>Sigma Nord - 2022 to 2023 Surface Drillhole Projections</b>	
<b>GEOLOGICA</b> <small>G R O U P P E - C O N S E I L</small>	Alain-Jean Besuregard, Geol., FGAC Daniel Gaudreault, Ing., B. Ing.
NTS Sheets: 32C04 Nad 83 Utm Zone 18N	Geology modified from: Sigeom, M.R.N.Q. Dessiné / Drawn : Jean St-Laurent
0      1:2,000      50      100 m.	Revisé / Revised : Sigma_Nord.mxd      Date : Dec. 13, 2024

Sources: Esri, HERE, Garmin, Intermap, increment P Corp., GEBCO, USGS, FAO, NGS, NRCAN, Geobase, IGN, Robson, Mapbox, Swire, GEBCO, METI, Esri, China (Hong Kong), (c) OpenStreetMap contributors, and the GIS User Community.