

CDC_Kan Legend
Claim Kan

Osisko Mining

Map 13

Date: 11/22/2018

Author: S. Hibert

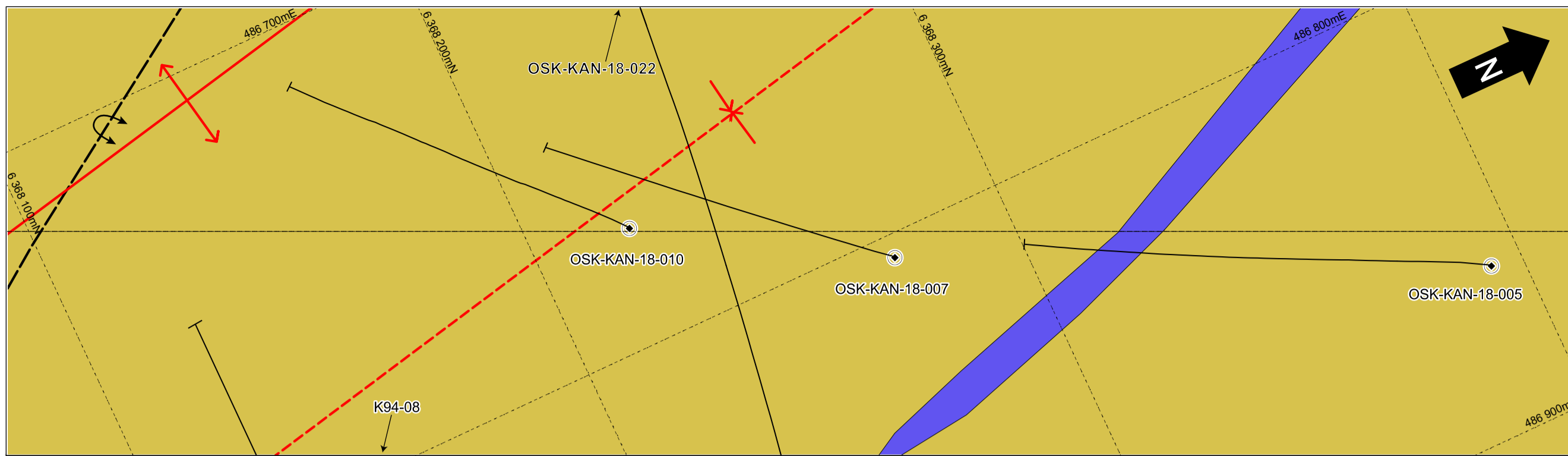
Origin: Quebec City

Drawn:

Scale: 27,000 (North: UTM Zone 18NAD 83)

0 1.25 2.5 Kilometers

Claims, 2018
KAN PROJECT



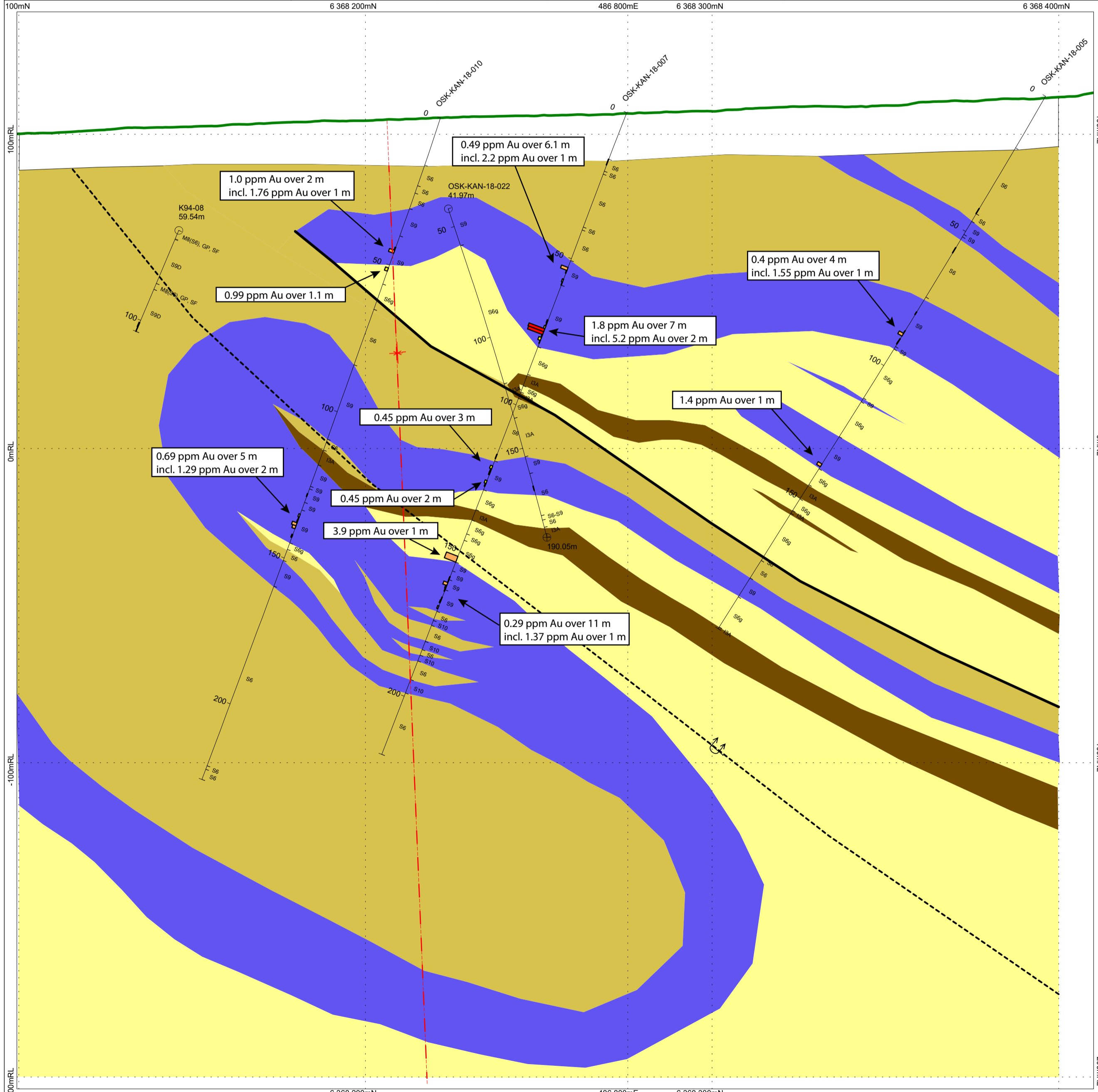
Geological Interpretation Symbolology

Lithology

- OVB Overburden
- S6 Black Shale
- S9 Iron Formation
- S6g Grey Shale
- I3A Gabbro
- S6-S9 Shaley Iron Formation
- F1-F2 Semi-massive, massive sulfides
- I1N Quartz Vein
- S4 Conglomerate
- OxBx Oxidized Breccia
- V3B Basalt
- FLT Fault
- LC Lost Core

Linear Structures

- Shear
- F1 Overturned Antiform Axial Plane
- F1 Overturned Synform Axial Plane
- F2 Synform Axial Plane
- F2 Antiform Axial Plane



Drillhole Symbolology

Au Histogram (ppm) 1.0 mm/unit

- 0.1 - 0.5
- 0.5 - 1
- 1 - 5
- > 5

*Values between 0-0.1 ppm are not displayed in histogram

Litho Facies (Abbreviated)

Depth (m) vs. Hole ID vs. EOH

List of Lithology Facies Abbreviations

I3A	Massive Gabbro
I3A Chl-Ank	Schistous chlorite-ankerite gabbro
I3A Chl-Cal	Schistous chlorite-calcite gabbro
I3A GH / PQ	Glomeroporphyric Gabbro
I3A QZ	Dioritic Gabbro with quartz eyes
S6b	Black Shale
S6b GP	Graphitic Black Shale
S6g	Grey Shale
S6g GP	Graphitic Grey Shale
S9B	Oxide iron formation
S9C Ank	Carbonate iron formation, ankerite facies
S9C Sid	Carbonate iron formation, siderite facies
S9D	Silicate iron formation
S9E	Sulfide iron formation
S10	Chert
S10B	Carbonate chert
S10C	Silicate chert
S10D	Sulfide chert

Section Specifications

Tolerance : ± 50m
 Scale : 1:1000

Section Origin (top left):
 486663 mE
 6367982 mN
 142.6 m RL

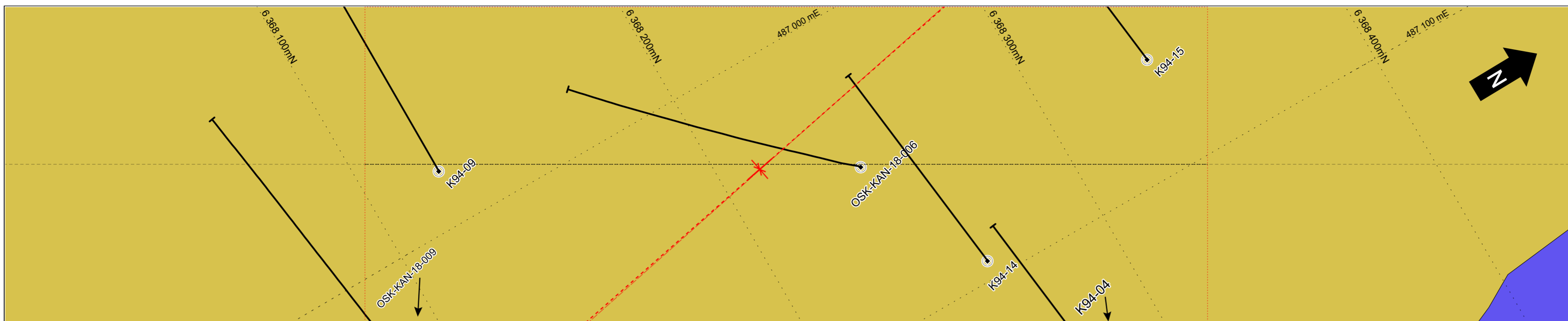
AZIMUTH: 25N

OSKO MINING

Map 1
 Date: 2018-11-07
 Author: Simon Hebert
 Office: Quebec City
 Drawing: Cynthia Lee
 Scale: 1:1000
 Projection: UTM NAD83 Zone 18

PPR Antiform Sector
 KAN PROJECT
 2018 Drilling Campaign

0 10 20 40
 metres



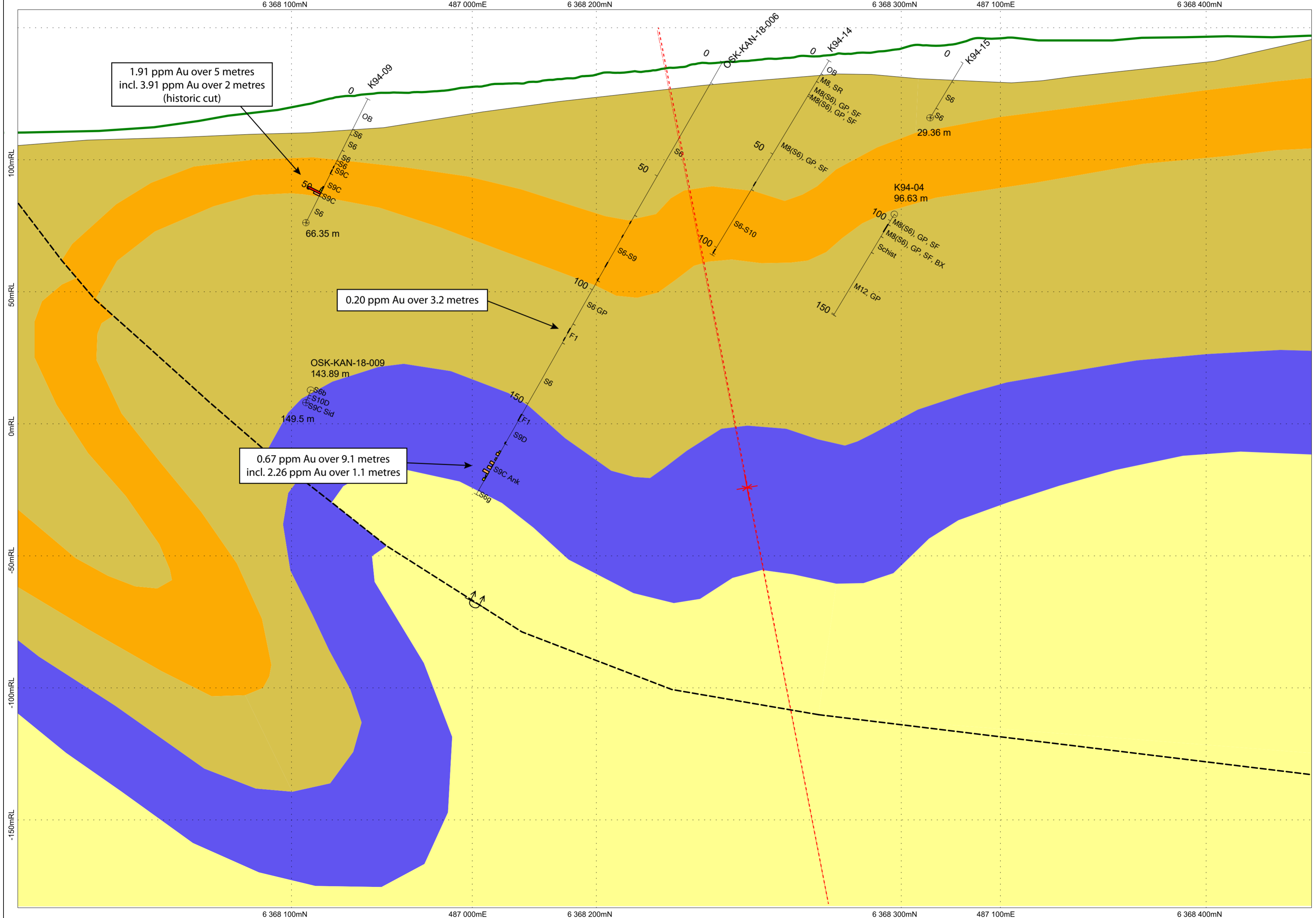
Geological Interpretation Symbolology

Lithology

- OVB Overburden
- S6 Black Shale
- S9 Iron Formation
- S6g Grey Shale
- I3A Gabbro
- S6-S9 Shaley Iron Formation
- F1-F2 Semi-massive, massive sulfides
- I1N Quartz Vein
- S4 Conglomerate
- OxBx Oxidized Breccia
- V3B Basalt
- FLT Fault
- LC Lost Core

Linear Structures

- Shear
- F1 Overturned Antiform Axial Plane
- F1 Overturned Synform Axial Plane
- F2 Synform Axial Plane
- F2 Antiform Axial Plane



Drillhole Symbolology

Au Histogram (ppm)
1.0 mm/unit

- 0.1 - 0.5
- 0.5 - 1
- 1 - 5
- > 5

*Values between 0-0.1 ppm are not displayed in histogram

Lithology (Abbreviated)

Depth (m)

Hole ID

EOH

List of Facies Abbreviations

- I3A Massive Gabbro
- I3A Chl-Ank Schistose chlorite-ankerite gabbro
- I3A Chl-Cal Schistose chlorite-calcite gabbro
- I3A GH / PQ Glomeroporphyric Gabbro
- I3A QZ Dioritic Gabbro with quartz eyes
- I4 Ultramafic Intrusif Rock*
*Interpreted as a gabbro facies
- S6b Black Shale
- S6b GP Graphitic Black Shale
- S6g Grey Shale
- S6g GP Graphitic Grey Shale
- S9B Oxide iron formation
- S9C Carbonate iron formation
- S9C ALT Altered Carbonate iron formation*
*Now referred to as "ankerite facies"
- S9C Ank Carbonate iron formation, ankerite facies
- S9C Sid Carbonate iron formation, siderite facies
- S9D Silicate iron formation
- S9E Sulfide iron formation
- S10 Chert
- S10B Carbonate chert
- S10C Silicate chert
- S10D Sulfide chert
- V3B Basalt*
*Interpreted as sheared gabbro

Section Specifications

Tolerance : ± 50m
Scale : 1:1000

Section Origin (top left):
486968 mE
6368105 mN
161.78 RL

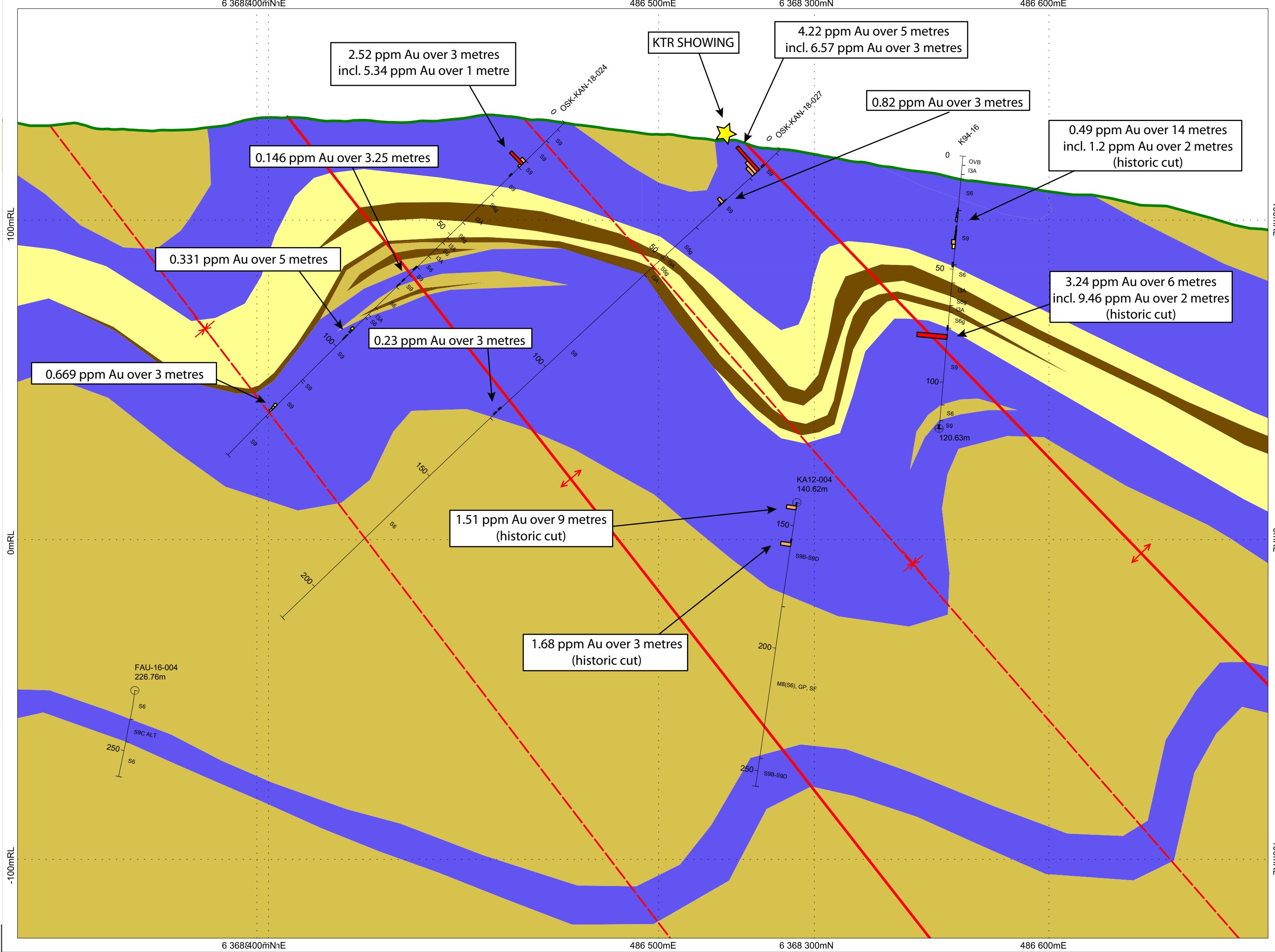
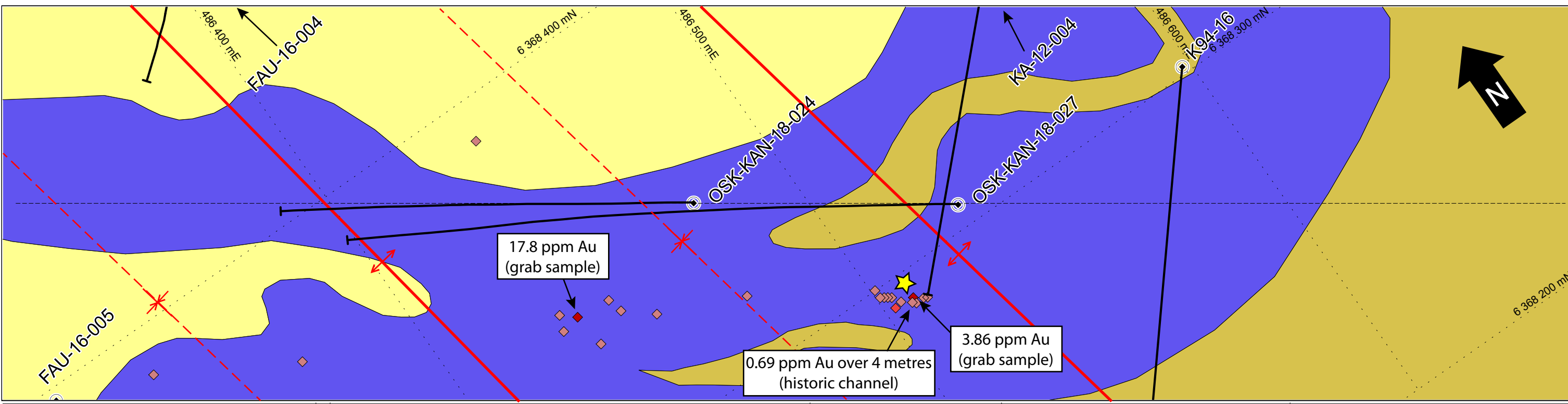
North Arrow
AZIMUTH: 30N

OSISKO
MINING

Map 2
Date: 2018-11-14
Author: Simon Hebert
Office: Quebec City
Drawing: Cynthia Lee
Scale: 1:1000
Projection: UTM NAD83, Zone 19

PPR Antiform Sector
KAN PROJECT
2018 Drilling Campaign

Scale bar (0 to 50 metres)



Geological Interpretation Symbology

Lithology	
□ OVB	Overburden
■ S6	Black Shale
■ S9	Iron Formation
■ S6g	Grey Shale
■ I3A	Gabbro
■ S6-S9	Shaley Iron Formation
■ F1-F2	Semi-massive, massive sulfides
■ I1N	Quartz Vein
■ S4	Conglomerate
■ OxBx	Oxidized Breccia
■ V3B	Basalt
▬ FLT	Fault
▬ LC	Lost Core

Surface Sampling (Grab & Channel)	
◆	Au ppm results
◆ (red)	> 3 ppm Au
◆ (orange)	0.5 - 3 ppm Au
◆ (yellow)	0.05 - 0.5 ppm Au
** Results with less than 0.05 ppm Au not displayed	
★	Showing Location

Linear Structures	
▬	Shear
↺	F1 Overturned Antiform Axial Plane
↻	F1 Overturned Synform Axial Plane
⊕	F2 Synform Axial Plane
⊖	F2 Antiform Axial Plane

Drillhole Symbology

Au Histogram (ppm)
1.0 mm/unit

□	0.1 - 0.5
■ (yellow)	0.5 - 1
■ (orange)	1 - 5
■ (red)	> 5

*Values between 0-0.1 ppm are not displayed in histogram

List of Facies Abbreviations

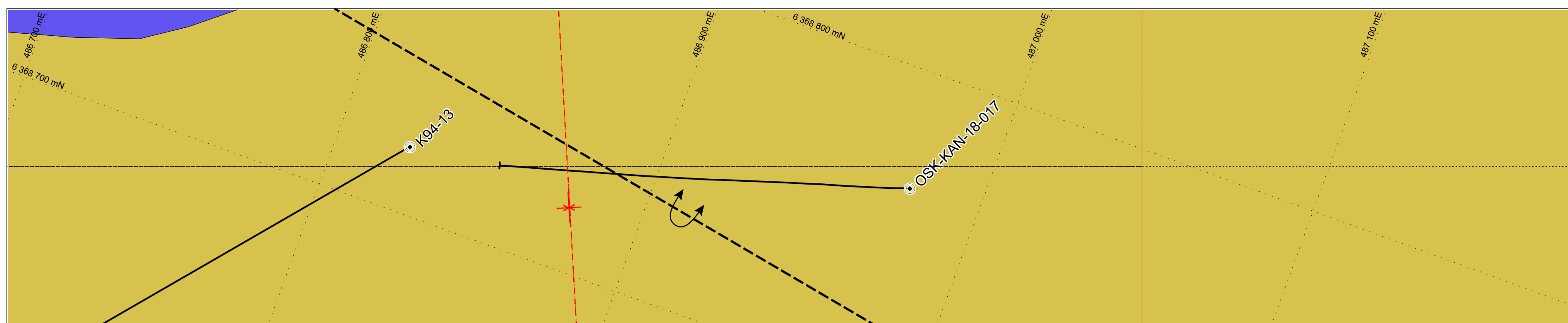
I3A	Massive Gabbro
I3A Chl-Ank	Schistous chlorite-ankerite gabbro
I3A Chl-Cal	Schistous chlorite-calcite gabbro
I3A GH / PQ	Glomeroporphyric Gabbro
I3A QZ	Dioritic Gabbro with quartz eyes
I4	Ultramafic Intrusif Rock*
*Interpreted as a gabbro facies	
S6b	Black Shale
S6b GP	Graphitic Black Shale
S6g	Grey Shale
S6g GP	Graphitic Grey Shale
S9B	Oxide iron formation
S9C	Carbonate iron formation
S9C ALT	Altered Carbonate iron formation*
*Now referred to as "ankerite facies"	
S9C Ank	Carbonate iron formation, ankerite facies
S9C Sid	Carbonate iron formation, siderite facies
S9D	Silicate iron formation
S9E	Sulfide iron formation
S10	Chert
S10B	Carbonate chert
S10C	Silicate chert
S10D	Sulfide chert
V3B	Basalt*
*Interpreted as sheared gabbro	

Section Specifications

Tolerance : ± 50m
Scale : 1:1000

Section Origin (top left):
486350 mE
6368433 mN
170.76 RL

Map 3	Colt Synform Sector KAN PROJECT 2018 Drilling Campaign
Date: 2018-11-15	
Author: Simon Hebert	
Office: Quebec City	
Drawing: Cynthia Lee	
Scale: 1:1000	Projection: UTM NAD83, Zone 19



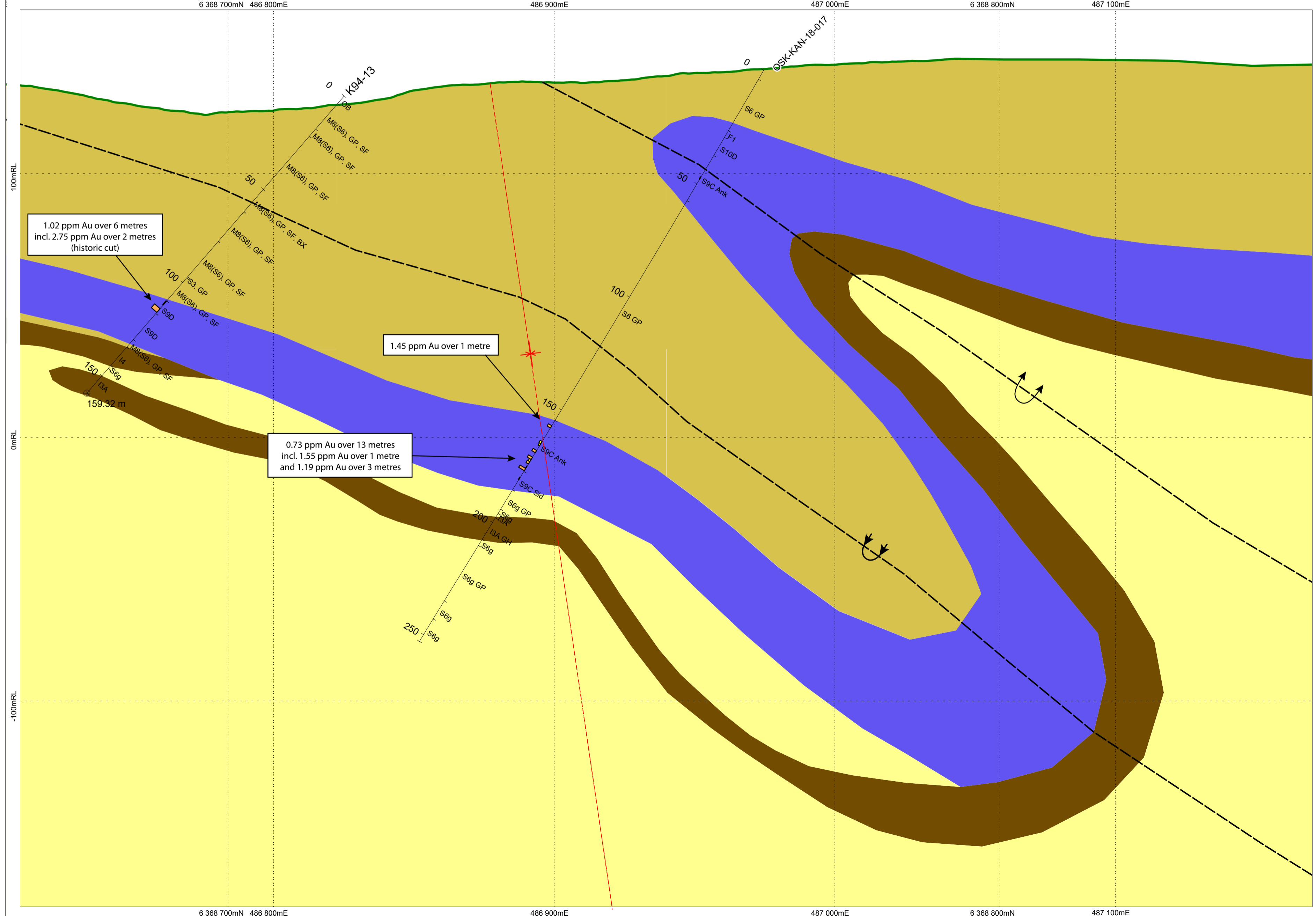
Geological Interpretation Symbolology

Lithology

- OVB Overburden
- S6 Black Shale
- S9 Iron Formation
- S6g Grey Shale
- I3A Gabbro
- S6-S9 Shaley Iron Formation
- F1-F2 Semi-massive, massive sulfides
- I1N Quartz Vein
- S4 Conglomerate
- OxBx Oxidized Breccia
- V3B Basalt
- FLT Fault
- LC Lost Core

Linear Structures

- Shear
- F1 Overturned Antiform Axial Plane
- F1 Overturned Synform Axial Plane
- F2 Synform Axial Plane
- F2 Antiform Axial Plane



Drillhole Symbolology

Au Histogram (ppm)
1.0 mm/unit

- 0.1 - 0.5
- 0.5 - 1
- 1 - 5
- > 5

*Values between 0-0.1 ppm are not displayed in histogram

Lithology (Abbreviated)

Depth (m)

Hole ID

EOH

List of Facies Abbreviations

- I3A Massive Gabbro
- I3A Chl-Ank Schistous chlorite-ankerite gabbro
- I3A Chl-Cal Schistous chlorite-calcite gabbro
- I3A GH / PQ Glomeroporphyric Gabbro
- I3A QZ Dioritic Gabbro with quartz eyes
- I4 Ultramafic Intrusif Rock*
*Interpreted as a gabbro facies
- S6b Black Shale
- S6b GP Graphitic Black Shale
- S6g Grey Shale
- S6g GP Graphitic Grey Shale
- S9B Oxide iron formation
- S9C Carbonate iron formation
- S9C ALT Altered Carbonate iron formation*
*Now referred to as "ankerite facies"
- S9C Ank Carbonate iron formation, ankerite facies
- S9C Sid Carbonate iron formation, siderite facies
- S9D Silicate iron formation
- S9E Sulfide iron formation
- S10 Chert
- S10B Carbonate chert
- S10C Silicate chert
- S10D Sulfide chert
- V3B Basalt*
*Interpreted as sheared gabbro

Section Specifications

Tolerance : ± 50m
Scale : 1:1000

Section Origin (top left):
486670 mE
6368659 mN
167.03 RL

AZIMUTH: 70N

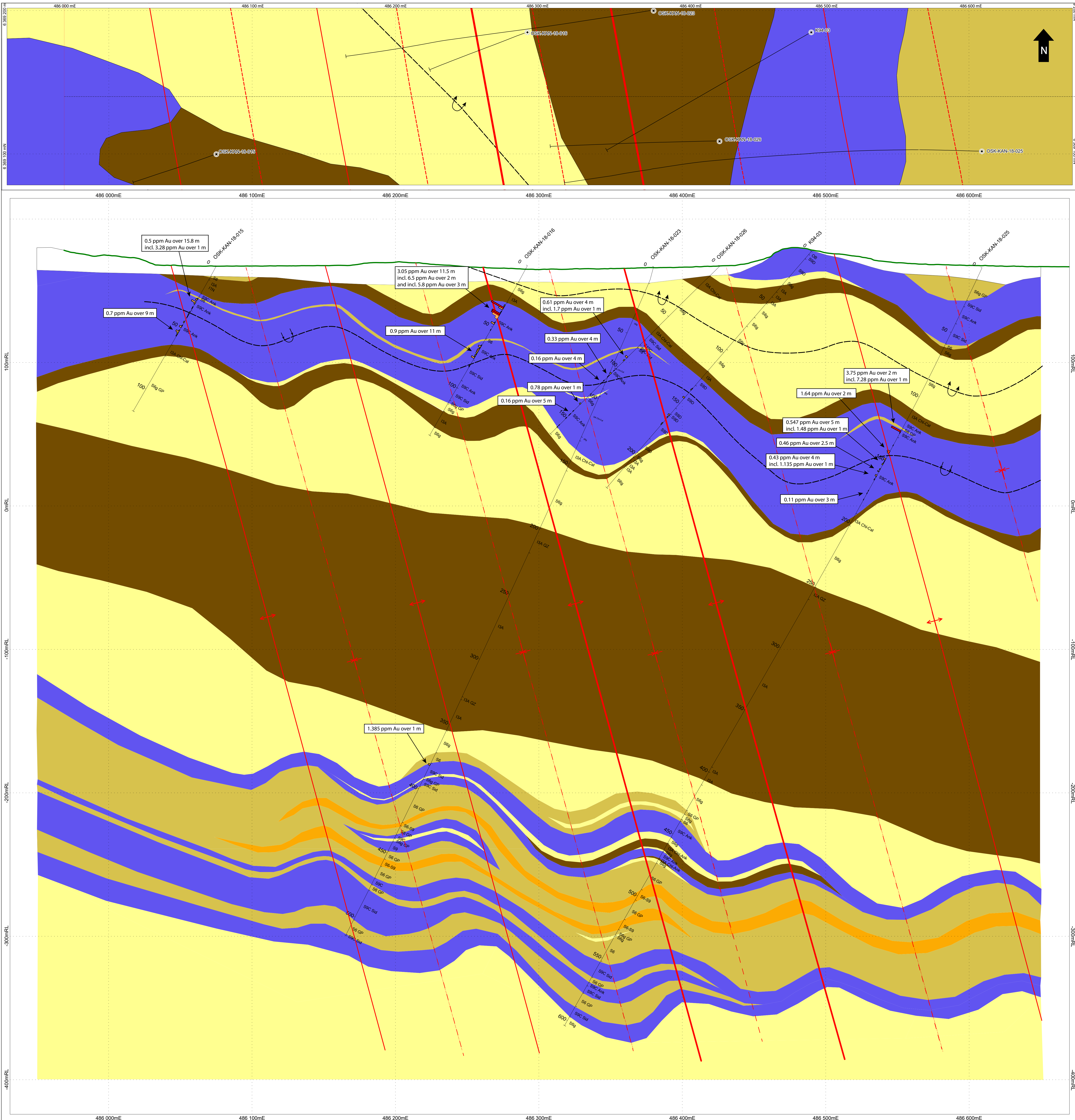
OSISKO
MINING

Map 4 Chain Lake Antiform Sector

Date: 2018-11-15
Author: Simon Hebert
Office: Québec City
Drawing: Cynthia Lee

KAN PROJECT
2018 Drilling Campaign

Scale: 1:1000 Projection: UTM NAD83, Zone 18



Geological Interpretation Symbolology

Lithology

- OVB Overburden
- S6 Black Shale
- S9 Iron Formation
- S6g Grey Shale
- I3A Gabbro
- S6-S9 Shaley Iron Formation
- F1-F2 Semi-massive, massive sulfides
- I1N Quartz Vein
- S4 Conglomerate
- OxBx Oxidized Breccia
- V3B Basalt

Linear Structures

- FLT Fault
- LC Lost Core

Linear Structures

- Shear
- F1 Overtuned Antiform Axial Plane
- F1 Overtuned Synform Axial Plane
- F2 Synform Axial Plane
- F2 Antiform Axial Plane

Drillhole Symbolology

Au Histogram (ppm)
1.0 mm/unit

- 0.1 - 0.5
- 0.5 - 1
- 1 - 5
- > 5

*Values between 0-0.1 ppm are not displayed in histogram

Depth (m) | Lithology (Abbreviated) | EOH

List of Facies Abbreviations

- I3A Massive Gabbro
- I3A Ch-Ank Schistous chlorite-ankerite gabbro
- I3A Ch-Cal Schistous chlorite-calcite gabbro
- I3A GH/PQ Glomeroporphyritic Gabbro
- I3A OZ Dioritic Gabbro with quartz eyes
- S6b Black Shale
- S6b GP Graphitic Black Shale
- S6g Grey Shale
- S6g GP Graphitic Grey Shale
- S9B Oxide iron formation
- S9C Ank Carbonate iron formation, ankerite facies
- S9C Sid Carbonate iron formation, siderite facies
- S9D Silicate iron formation
- S9E Sulfide iron formation
- S10 Chert
- S10B Carbonate chert
- S10C Silicate chert
- S10D Sulfide chert

Section Specifications

Tolerance : ± 50m
Scale : 1:1000

Section Origin (top left):
485969 mE
6389140 mN
228319 RL

AZIMUTH: 90N

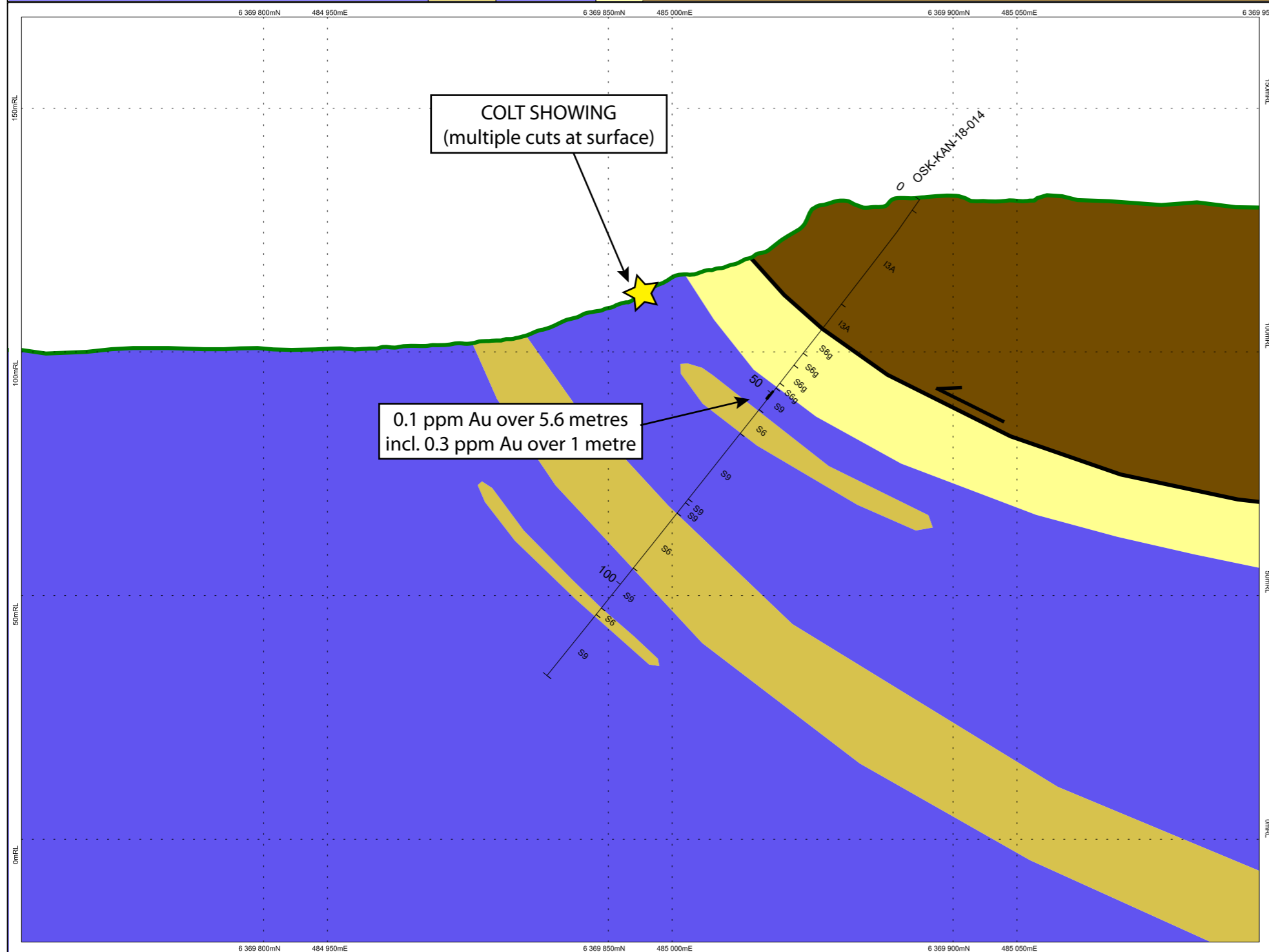
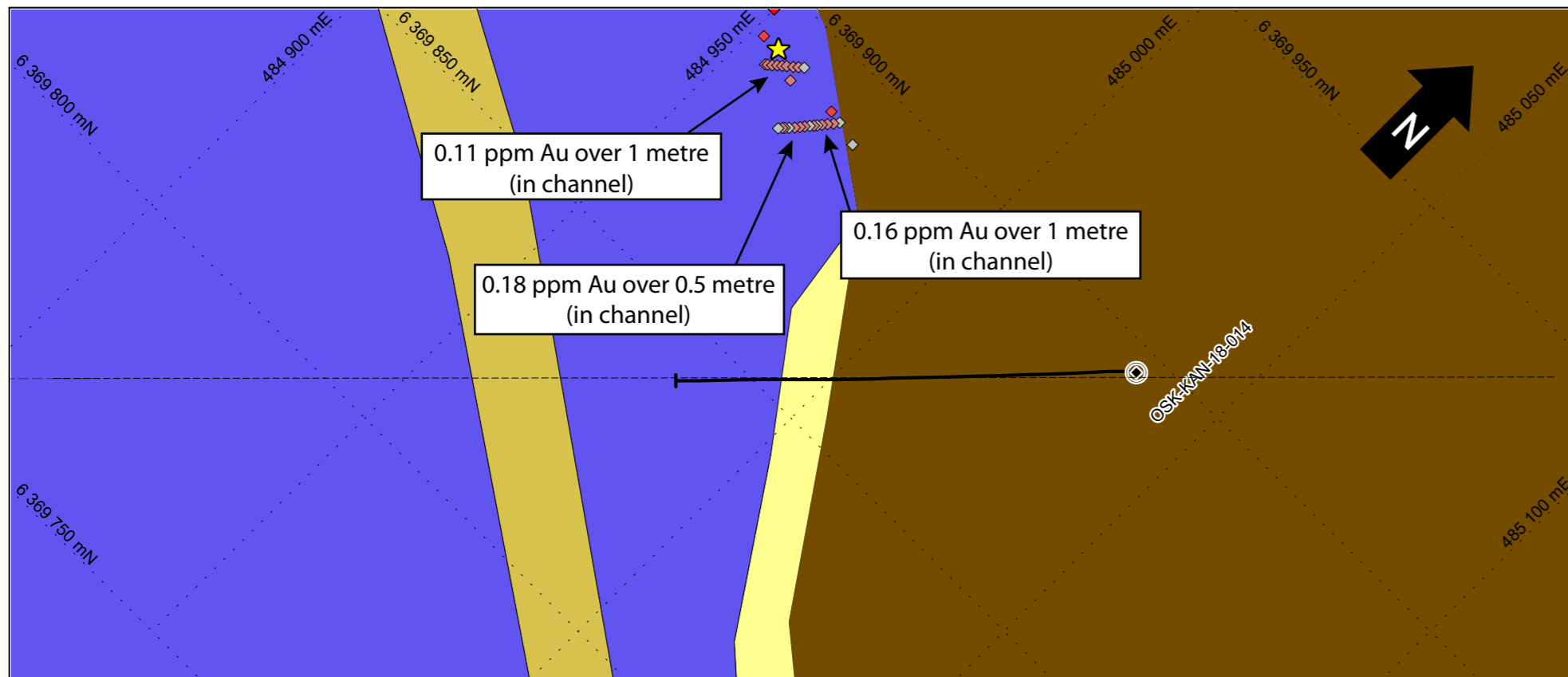
OSISKO

Map 5

Date: 2018-11-05
Author: Simon Hebert
Office: Quebec City
Drawing: Cynthia Lee
Scale: 1:1000 | Projections: UTM (Nad 83) Zone 19

PPR Synform Area
KAN PROJECT
2018 Drilling Campaign

0 25 50 metres

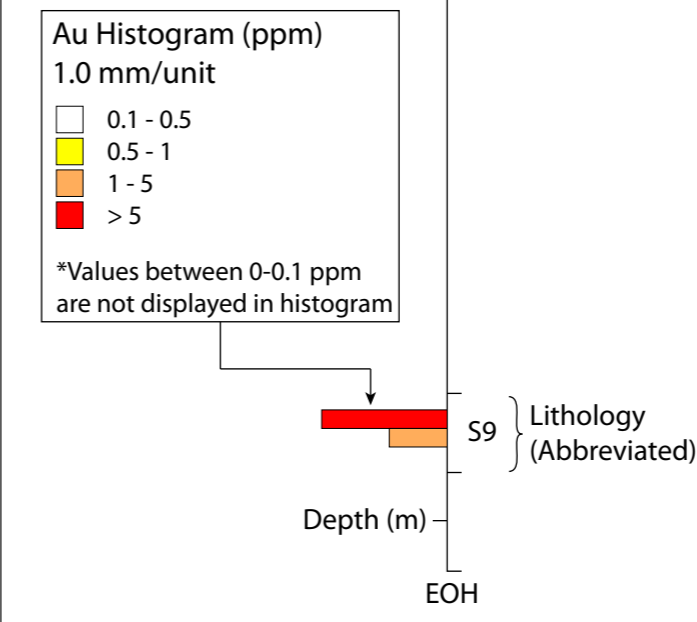


Geological Interpretation Symbology

- Lithology**
- OVB Overburden
 - S6 Black Shale
 - S9 Iron Formation
 - S6g Grey Shale
 - I3A Gabbro
 - S6-S9 Shaley Iron Formation
 - F1-F2 Semi-massive, massive sulfides
 - I1N Quartz Vein
 - S4 Conglomerate
 - OxBx Oxidized Breccia
 - V3B Basalt
 - ▬ FLT Fault
 - ▬ LC Lost Core

- Linear Structures**
- ← Shear
 - ↺ F1 Overturned Antiform Axial Plane
 - ↻ F1 Overturned Synform Axial Plane
 - ⊥ F2 Synform Axial Plane
 - ⊥ F2 Antiform Axial Plane

Drillhole Symbology



Surface Sampling (Grab & Channel)

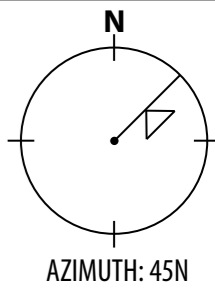
- Au ppm results**
- ◆ > 3 ppm Au
 - ◆ 1 - 3 ppm Au
 - ◆ 0.05 - 1 ppm Au
 - ◆ < 0.05 ppm Au

List of Facies Abbreviations

- I3A Massive Gabbro
- I3A Chl-Ank Schistous chlorite-ankerite gabbro
- I3A Chl-Cal Schistous chlorite-calcite gabbro
- I3A GH / PQ Glomeroporphyric Gabbro
- I3A QZ Dioritic Gabbro with quartz eyes
- S6b Black Shale
- S6b GP Graphitic Black Shale
- S6g Grey Shale
- S6g GP Graphitic Grey Shale
- S9B Oxide iron formation
- S9C Ank Carbonate iron formation, ankerite facies
- S9C Sid Carbonate iron formation, siderite facies
- S9D Silicate iron formation
- S9E Sulfide iron formation
- S10 Chert
- S10B Carbonate chert
- S10C Silicate chert
- S10D Sulfide chert

Section Specifications

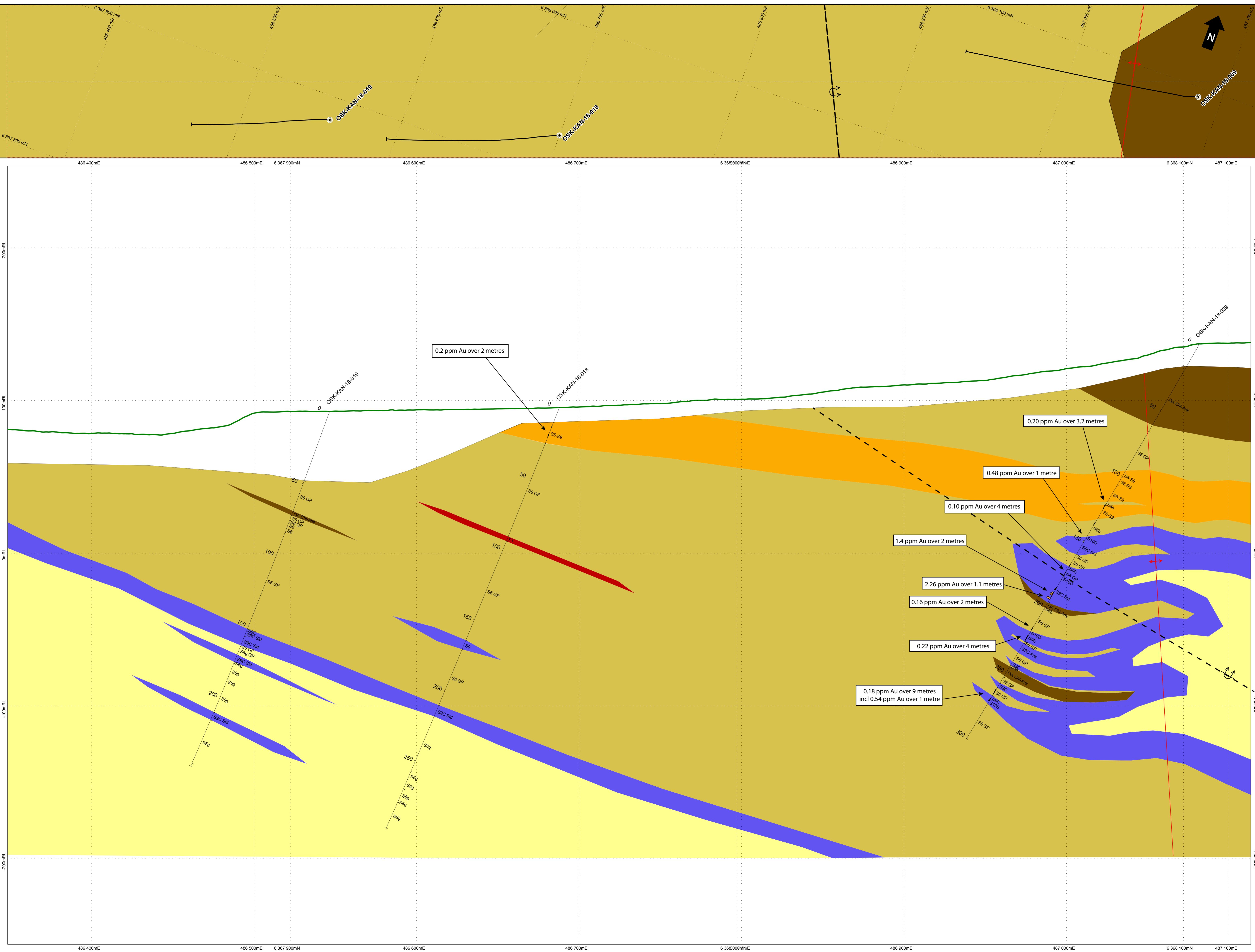
Tolerance : ± 50m
 Scale : 1:1000
 Section Origin (top left):
 484954 mE
 6369813 mN
 171.3 RL



OSISKO
MINING

Map 6	
Date: 2018-11-16	Colt Sector KAN PROJECT 2018 Drilling Campaign
Author: Simon Hebert	
Office: Quebec City	
Drawing: Cynthia Lee	
Scale: 1:1000	Projection: UTM NAD83, Zone 19

0 10 20 40 metres

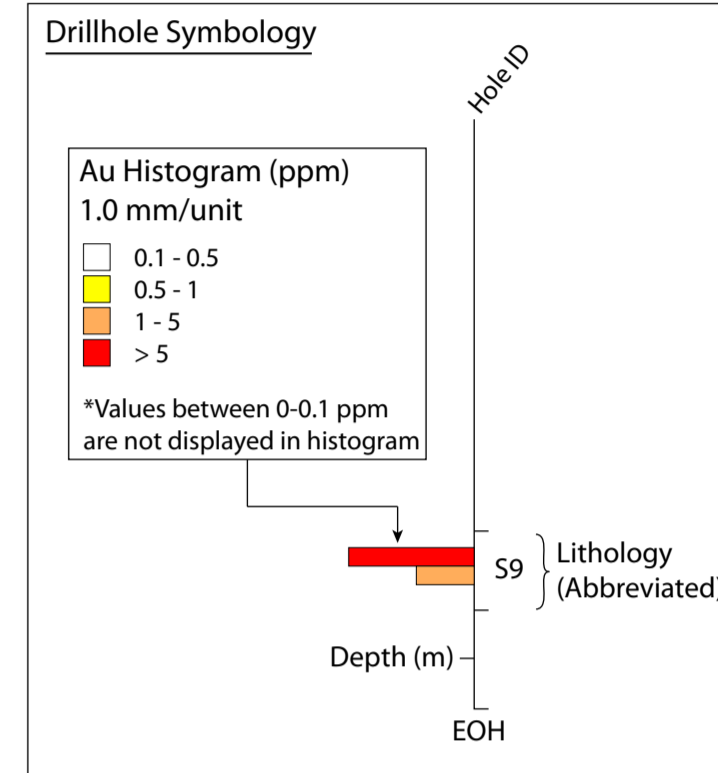


Geological Interpretation Symbolology

	Overburden
	Black Shale
	Iron Formation
	Grey Shale
	Gabbro
	Shaley Iron Formation
	Semi-massive, massive sulfides
	Quartz Vein
	Conglomerate
	Oxidized Breccia
	Basalt
	Fault
	Lost Core

Linear Structures

- Shear
- F1 Overturned Antiform Axial Plane
- F1 Overturned Synform Axial Plane
- F2 Synform Axial Plane
- F2 Antiform Axial Plane



List of Facies Abbreviations

I3A	Massive Gabbro
I3A Chi-Ank	Schistous chlorite-ankerite gabbro
I3A Chi-Cal	Schistous chlorite-calcite gabbro
I3A GH/PQ	Glomeroporphyritic Gabbro
I3A QZ	Dioritic Gabbro with quartz eyes
I4	Ultramafic Intrusif Rock* *Interpreted as a gabbro facies
S6b	Black Shale
S6b GP	Graphitic Black Shale
S6g	Grey Shale
S6g GP	Graphitic Grey Shale
S9B	Oxide iron formation
S9C	Carbonate iron formation
S9C ALT	Altered Carbonate iron formation* *now referred to as "ankerite facies"
S9C Ank	Carbonate iron formation, ankerite facies
S9C Sid	Carbonate iron formation, siderite facies
S9D	Silicate iron formation
S9E	Sulfide iron formation
S10	Chert
S10B	Carbonate chert
S10C	Silicate chert
S10D	Sulfide chert
V3B	Basalt* *Interpreted as sheared gabbro

Section Specifications

Tolerance : ± 65m
 Scale : 1:1000

Section Origin (top left):
 486347 mE
 6367836 mN
 258.22 RL

OSISKO MINING

Map 7

Date: 2018-11-13

Author: Simon Hebert

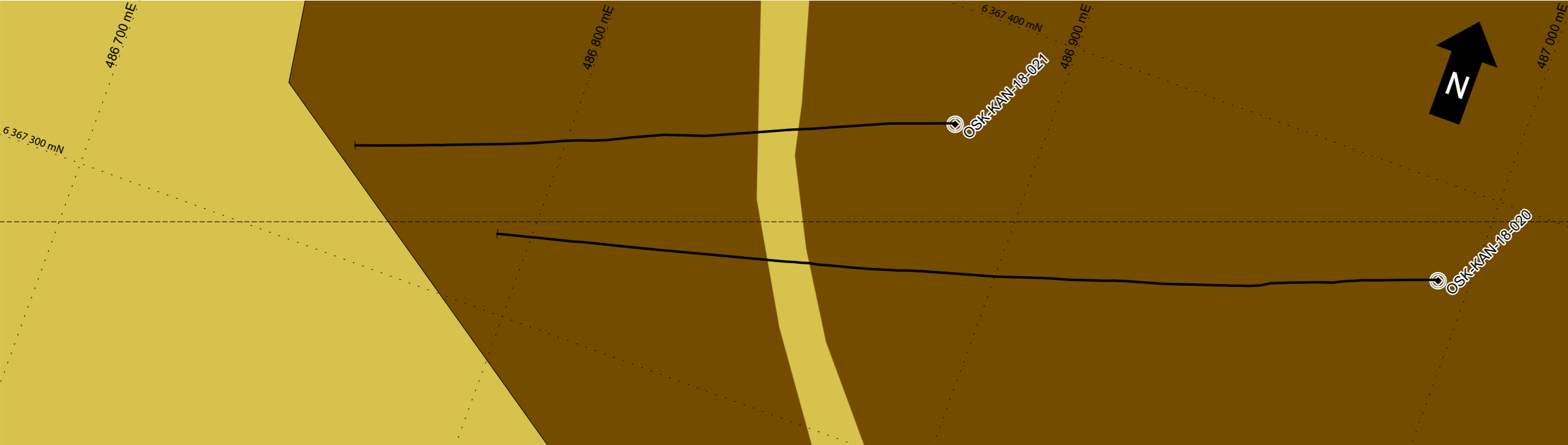
Office: Quebec City

Drawing: Cynthia Lee

Scale: 1:1000

Projection: UTM NAD83, Zone 19

PPR Antiform & PPR-PF Corridor KAN PROJECT 2018 Drilling Campaign



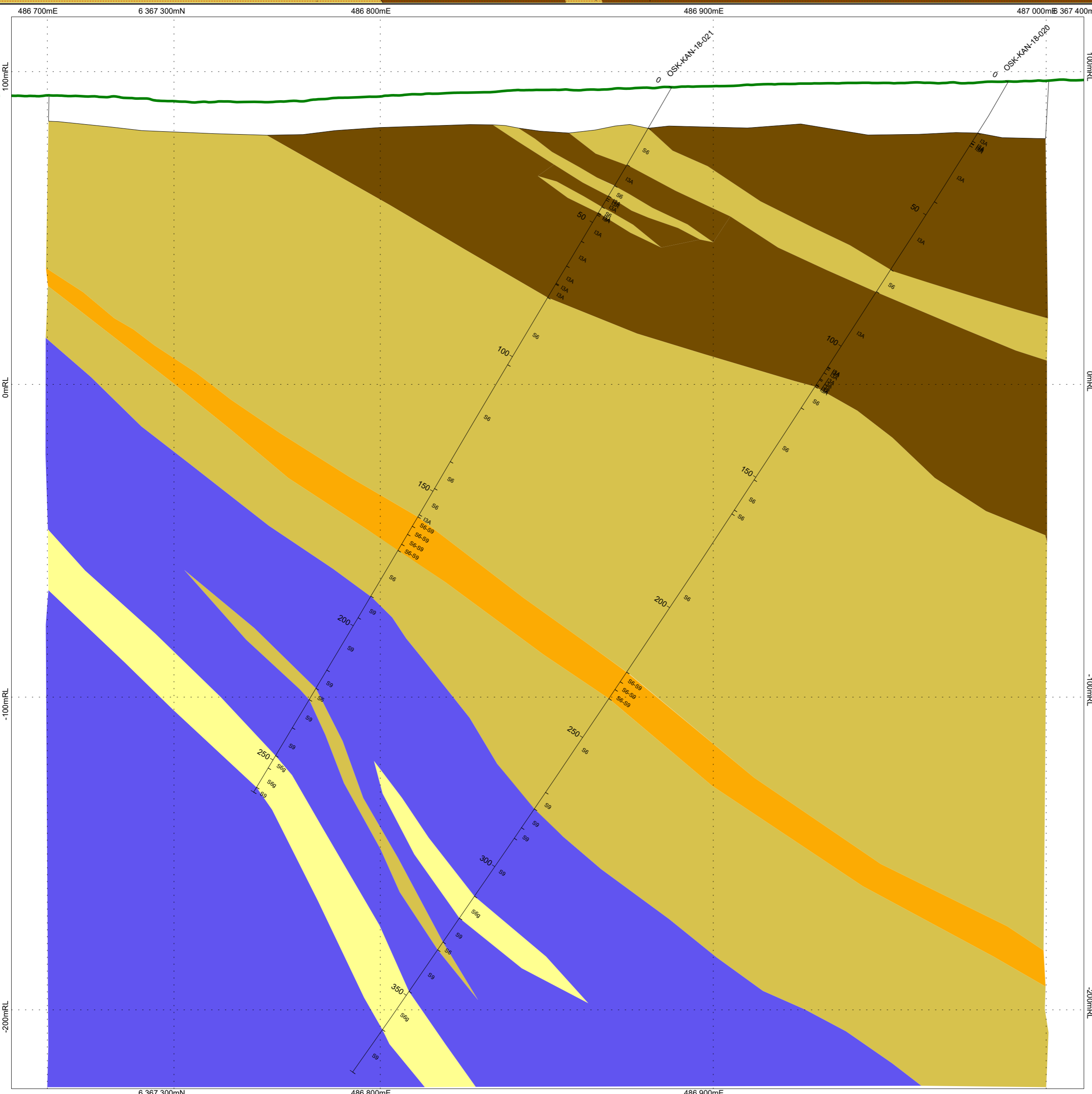
Geological Interpretation Symbolology

Lithology

- OVB Overburden
- S6 Black Shale
- S9 Iron Formation
- S6g Grey Shale
- I3A Gabbro
- S6-S9 Shaley Iron Formation
- F1-F2 Semi-massive, massive sulfides
- I1N Quartz Vein
- S4 Conglomerate
- OxBx Oxidized Breccia
- V3B Basalt
- FLT Fault
- LC Lost Core

Linear Structures

- Shear
- F1 Overturned Antiform Axial Plane
- F1 Overturned Synform Axial Plane
- F2 Synform Axial Plane
- F2 Antiform Axial Plane



Drillhole Symbolology

Au Histogram (ppm)
1.0 mm/unit

- 0.1 - 0.5
- 0.5 - 1
- 1 - 5
- > 5

*Values between 0-0.1 ppm are not displayed in histogram

List of Facies Abbreviations

I3A	Massive Gabbro
I3A Chl-Ank	Schistous chlorite-ankerite gabbro
I3A Chl-Cal	Schistous chlorite-calcite gabbro
I3A GH / PQ	Glomeroporphyric Gabbro
I3A QZ	Dioritic Gabbro with quartz eyes
I4	Ultramafic Intrusif Rock* *Interpreted as a gabbro facies
S6b	Black Shale
S6b GP	Graphitic Black Shale
S6g	Grey Shale
S6g GP	Graphitic Grey Shale
S9B	Oxide iron formation
S9C	Carbonate iron formation
S9C ALT	Altered Carbonate iron formation* *Now referred to as "ankerite facies"
S9C Ank	Carbonate iron formation, ankerite facies
S9C Sid	Carbonate iron formation, siderite facies
S9D	Silicate iron formation
S9E	Sulfide iron formation
S10	Chert
S10B	Carbonate chert
S10C	Silicate chert
S10D	Sulfide chert
V3B	Basalt* *Interpreted as sheared gabbro

Section Specifications

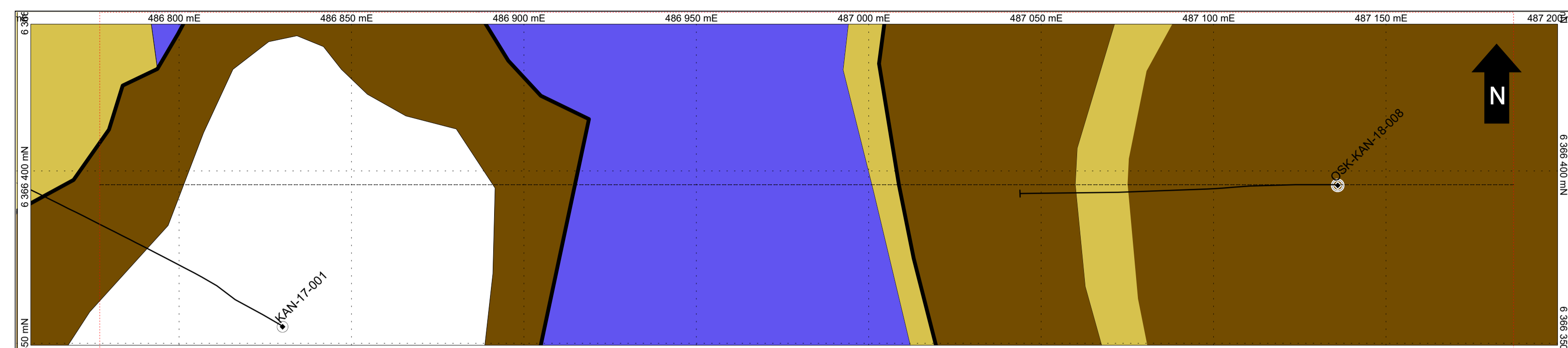
Tolerance : ± 50m
Scale : 1:1000

Section Origin (top left):
486625 mE
6367259 mN
121.16 RL

Map 8

Date: 2019-11-16
Author: Simon Hebert
Office: Quebec City
Drawing: Cynthia Lee
Scale: 1:1000
Projection: UTM NAD83, Zone 19

PPR-PF Corridor Sector
KAN PROJECT
2018 Drilling Campaign



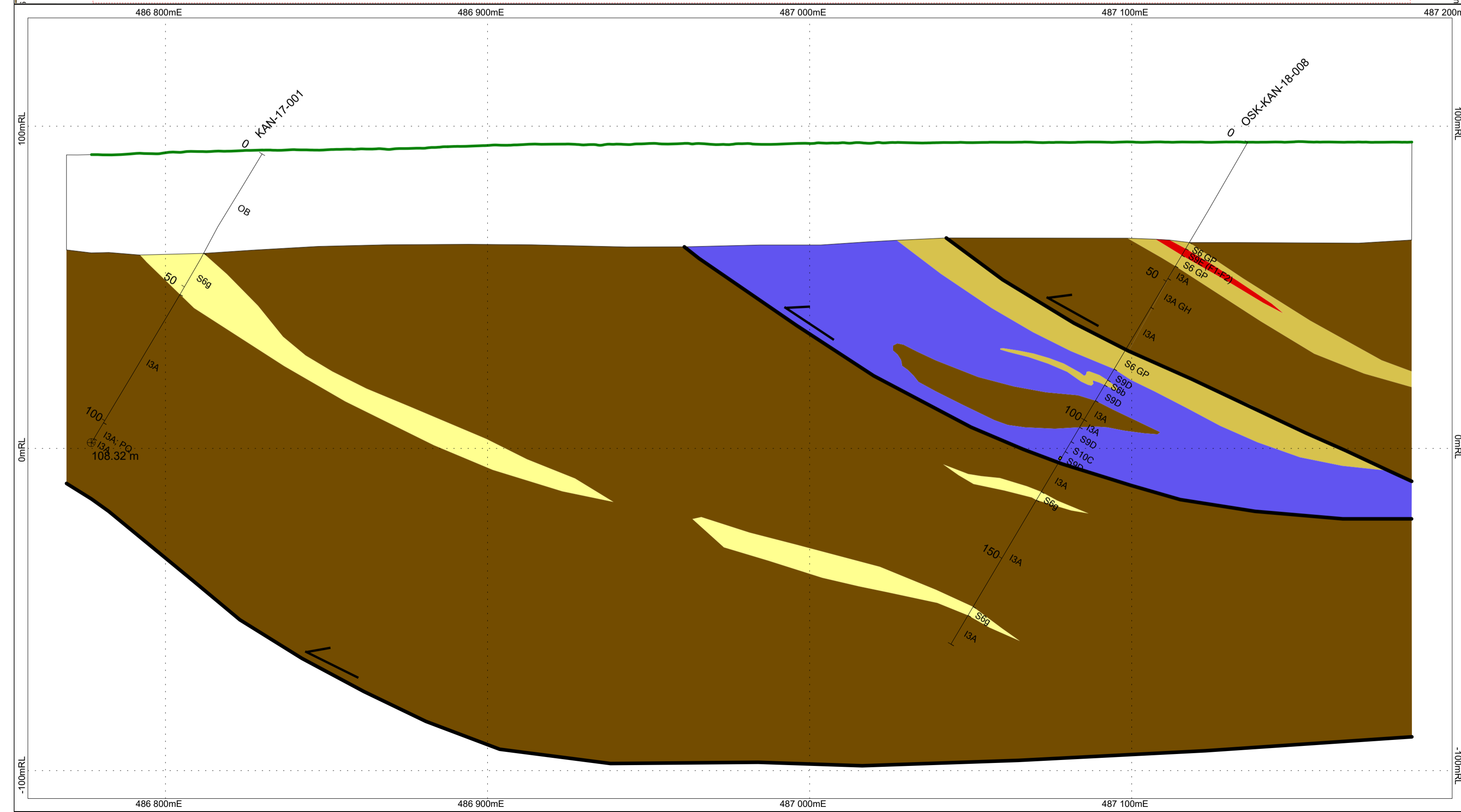
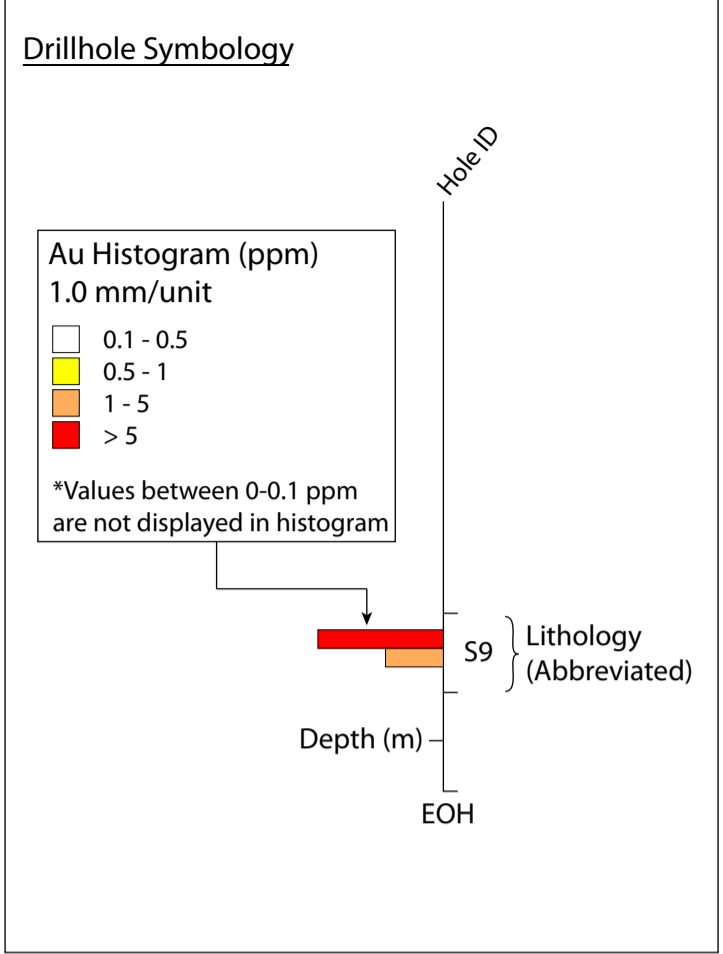
Geological Interpretation Symbology

Lithology

- OVB Overburden
- S6 Black Shale
- S9 Iron Formation
- S6g Grey Shale
- I3A Gabbro
- S6-S9 Shaley Iron Formation
- F1-F2 Semi-massive, massive sulfides
- I1N Quartz Vein
- S4 Conglomerate
- OxBx Oxidized Breccia
- V3B Basalt
- FLT Fault
- LC Lost Core

Linear Structures

- Shear
- F1 Overturned Antiform Axial Plane
- F1 Overturned Synform Axial Plane
- F2 Synform Axial Plane
- F2 Antiform Axial Plane



List of Facies Abbreviations

I3A	Massive Gabbro
I3A Chl-Ank	Schistous chlorite-ankerite gabbro
I3A Chl-Cal	Schistous chlorite-calcite gabbro
I3A GH / PQ	Glomeroporphyric Gabbro
I3A QZ	Dioritic Gabbro with quartz eyes
I4	Ultramafic Intrusif Rock* *Interpreted as a gabbro facies
S6b	Black Shale
S6b GP	Graphitic Black Shale
S6g	Grey Shale
S6g GP	Graphitic Grey Shale
S9B	Oxide iron formation
S9C	Carbonate iron formation
S9C ALT	Altered Carbonate iron formation* *Now referred to as "ankerite facies"
S9C Ank	Carbonate iron formation, ankerite facies
S9C Sid	Carbonate iron formation, siderite facies
S9D	Silicate iron formation
S9E	Sulfide iron formation
S10	Chert
S10B	Carbonate chert
S10C	Silicate chert
S10D	Sulfide chert
V3B	Basalt* *Interpreted as sheared gabbro

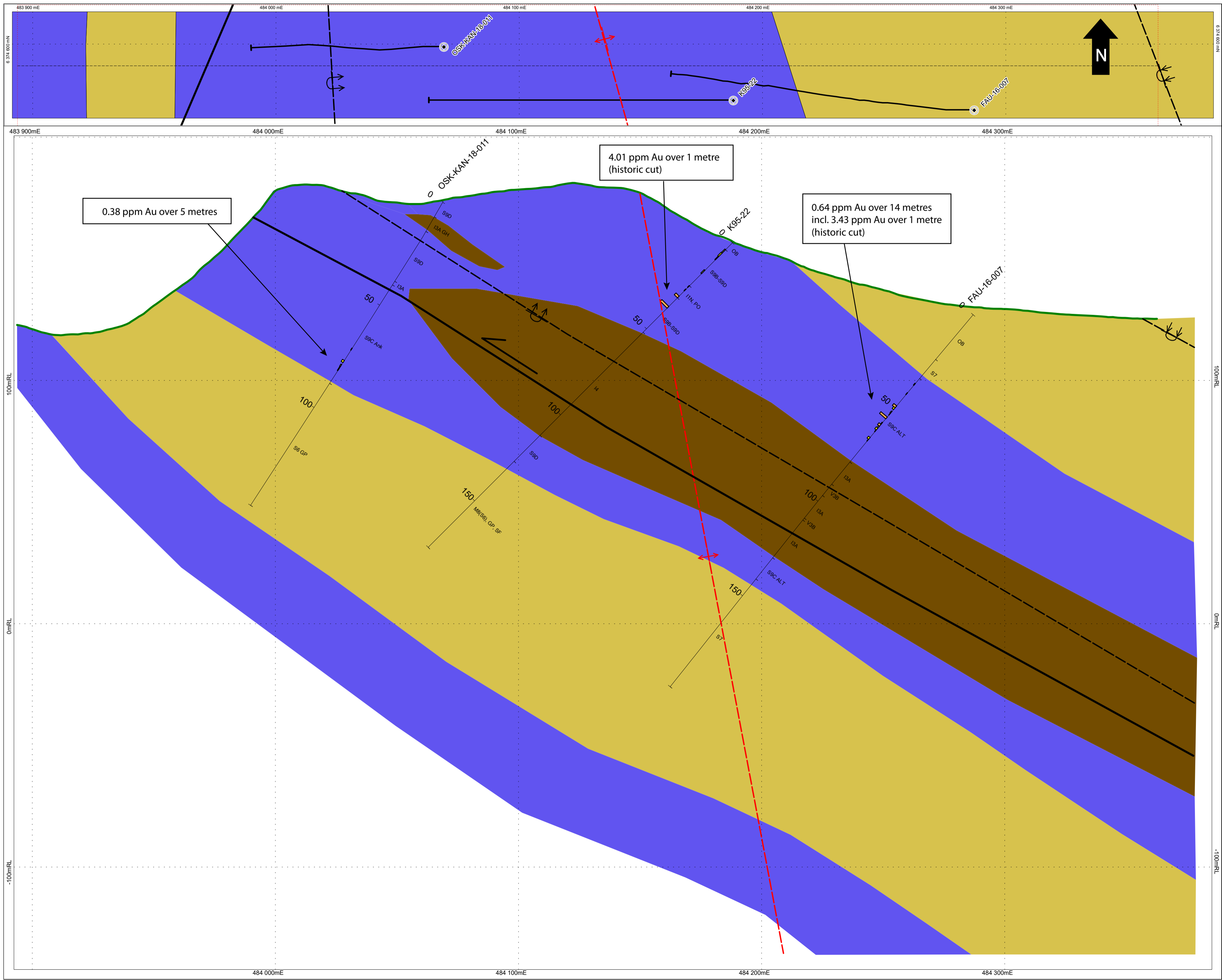
Section Specifications

Tolerance : ± 50m
Scale : 1:1000

Section Origin (top left):
486777 mE
6366396 mN
137.47 RL

Pyrite Falls Sector
KAN PROJECT
2018 Drilling Campaign

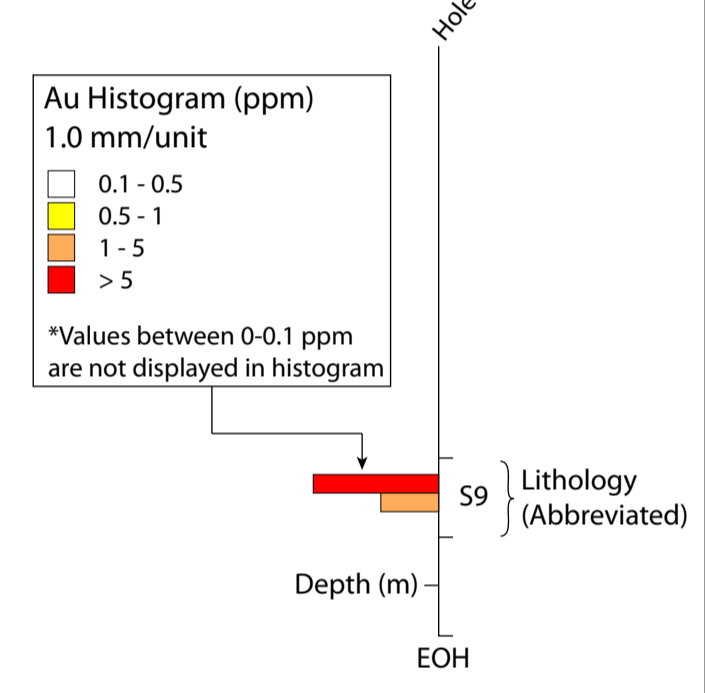
Map 9	Date: 2018-11-05
Author: Simon Hebert	Office: Quebec City
Drawing: Cynthia Lee	Scale: 1:1000
Projection: UTM NAD83, Zone 19	



Geological Interpretation Symbolology

- Lithology**
- OVB Overburden
 - S6 Black Shale
 - S9 Iron Formation
 - S6g Grey Shale
 - I3A Gabbro
 - S9B-S9 Shalely Iron Formation
 - F1-F2 Semi-massive, massive sulfides
 - I1N Quartz Vein
 - S4 Conglomerate
 - OxBx Oxidized Breccia
 - V3B Basalt
- Linear Structures**
- |— Shear
 - ↔ F1 Overturned Antiform Axial Plane
 - ↔ F1 Overturned Synform Axial Plane
 - - - F2 Synform Axial Plane
 - - - F2 Antiform Axial Plane

Drillhole Symbolology

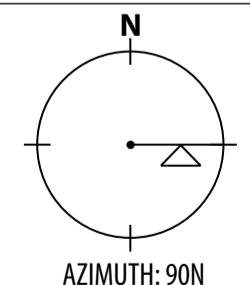


List of Facies Abbreviations

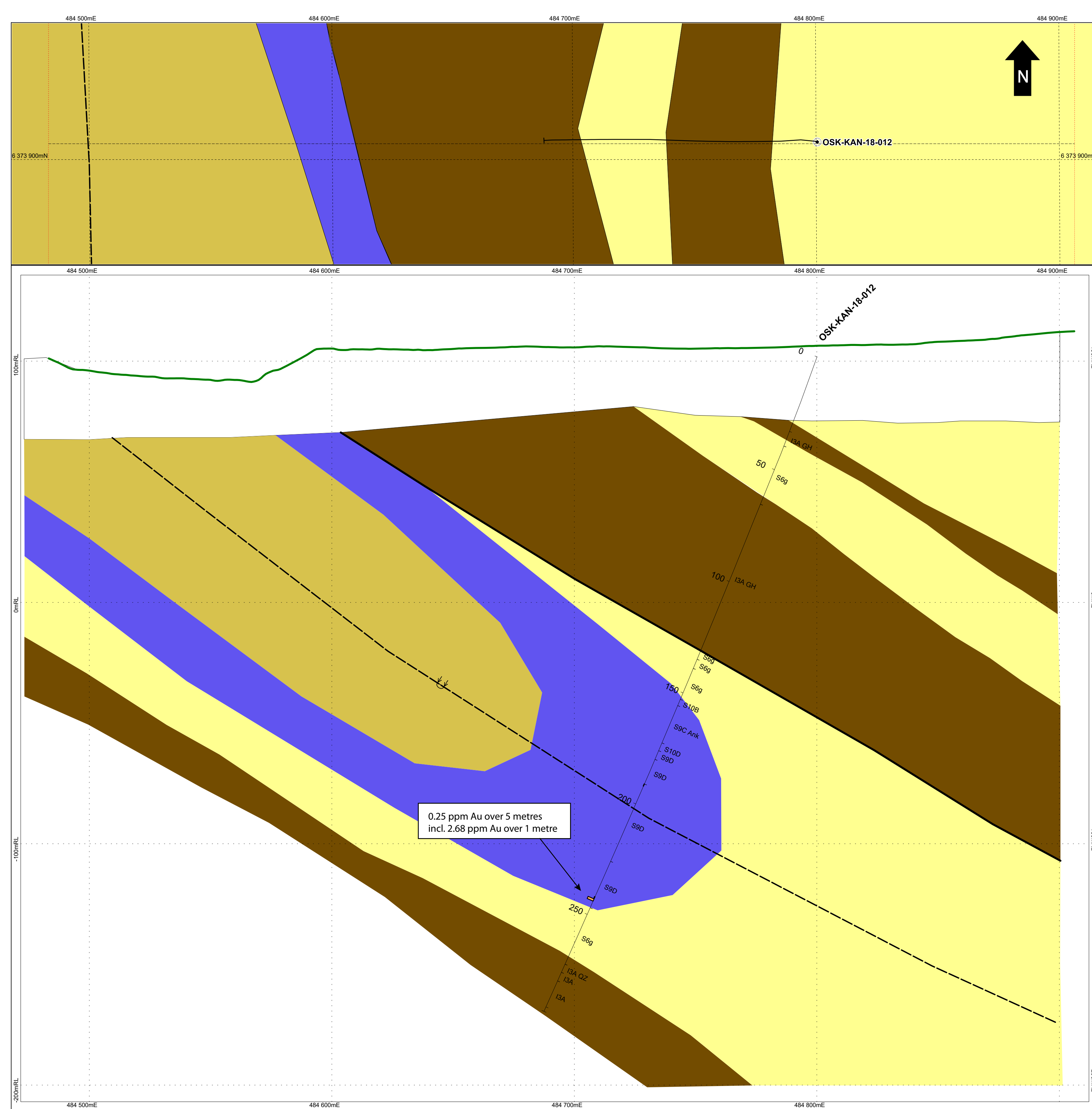
- I3A Massive Gabbro
- I3A Chl-Ank Schistous chlorite-ankerite gabbro
- I3A Chl-Cal Schistous chlorite-calcite gabbro
- I3A GH / PQ Glomeroporphyric Gabbro
- I3A QZ Dioritic Gabbro with quartz eyes
- S6b Black Shale
- S6b GP Graphitic Black Shale
- S6g Grey Shale
- S6g GP Graphitic Grey Shale
- S9B Oxide iron formation
- S9C Ank Carbonate iron formation, ankerite facies
- S9C Sid Carbonate iron formation, siderite facies
- S9D Silicate iron formation
- S9E Sulfide iron formation
- S10 Chert
- S10B Carbonate chert
- S10C Silicate chert
- S10D Sulfide chert

Section Specifications

Tolerance : ± 25m
 Scale : 1:1000
 Section Origin (top left):
 483894 mE
 6374591 mN
 204.23 RL



Map 10	Ferricrete Antiform Sector KAN PROJECT 2018 Drilling Campaign
Date: 2018-11-08	Author: Simon Hedder
Other: Quentin Gley	Drawing: Cynthia Lee
Scale: 1:1000	Projection: UTM NAD83 Zone 18



Geological Interpretation Symbology

Lithology

- OVB Overburden
- S6 Black Shale
- S9 Iron Formation
- S6g Grey Shale
- I3A Gabbro
- S6-S9 Shaly Iron Formation
- F1-F2 Semi-massive, massive sulfides
- I1N Quartz Vein
- S4 Conglomerate
- OxBx Oxidized Breccia
- V3B Basalt

Linear Structures

- FLT Fault
- LC Lost Core
- Shear
- F1 Overturned Antiform Axial Plane
- F1 Overturned Synform Axial Plane
- F2 Synform Axial Plane
- F2 Antiform Axial Plane

Drillhole Symbology

Au Histogram (ppm)
1.0 mm/unit

- 0.1 - 0.5
- 0.5 - 1
- 1 - 5
- > 5

*Values between 0-0.1 ppm are not displayed in histogram

Hole ID

Lithology (Abbreviated)

Depth (m)

EOH

List of Facies Abbreviations

I3A	Massive Gabbro
I3A Chl-Ank	Schistous chlorite-ankerite gabbro
I3A Chl-Cal	Schistous chlorite-calcite gabbro
I3A GH / PQ	Glomeroporphyric Gabbro
I3A QZ	Dioritic Gabbro with quartz eyes
S6b	Black Shale
S6b GP	Graphitic Black Shale
S6g	Grey Shale
S6g GP	Graphitic Grey Shale
S9B	Oxide iron formation
S9C Ank	Carbonate iron formation, ankerite facies
S9C Sid	Carbonate iron formation, siderite facies
S9D	Silicate iron formation
S9E	Sulfide iron formation
S10	Chert
S10B	Carbonate chert
S10C	Silicate chert
S10D	Sulfide chert

Section Specifications

Tolerance : ± 50m
Scale : 1:1000

Section Origin (top left):
484483 mE
6373905 mN
139.38 RL

AZIMUTH: 90N

OSISKO

Map 11

Date: 2018-11-12

Author: Simon Hebert

Office: Québec City

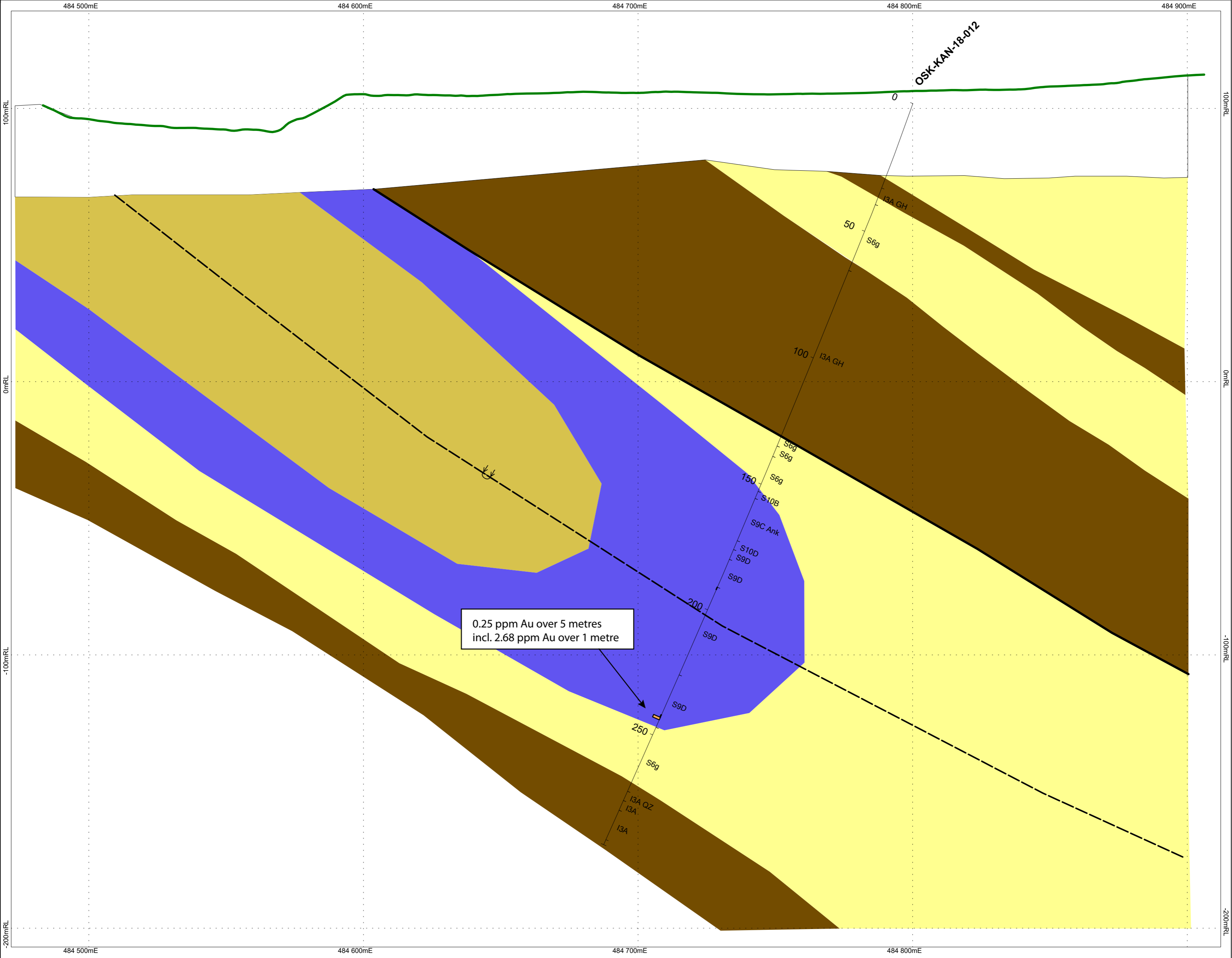
Drawing: Cynthia Lee

Scale: 1:1000

Projection: UTM NAD83 Zone 18

Ferricrete Synform Sector
KAN PROJECT
2018 Drilling Campaign

0 10 20 40 metres



OSK-KAN-18-012

0.25 ppm Au over 5 metres
incl. 2.68 ppm Au over 1 metre

0

50

100

150

200

250

I3A GH

S6g

I3A GH

S6g

S6g

S6g

S10B

S9C Ank

S10D

S9D

S9D

S9D

S9D

S6g

I3A QZ

I3A

I3A

484 500mE

484 600mE

484 700mE

484 800mE

484 900mE

100mRL

100mRL

0mRL

0mRL

-100mRL

-100mRL

-200mRL

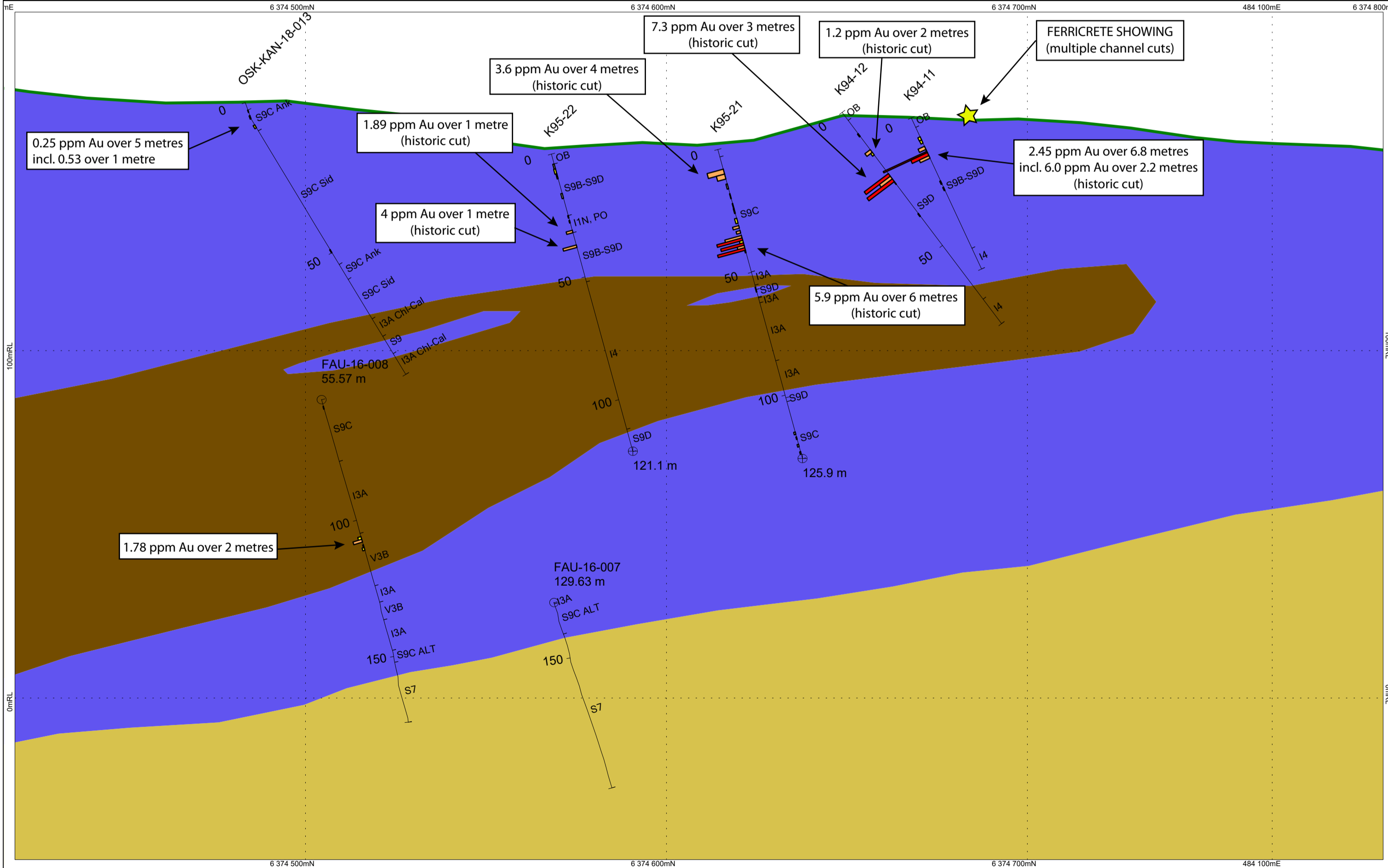
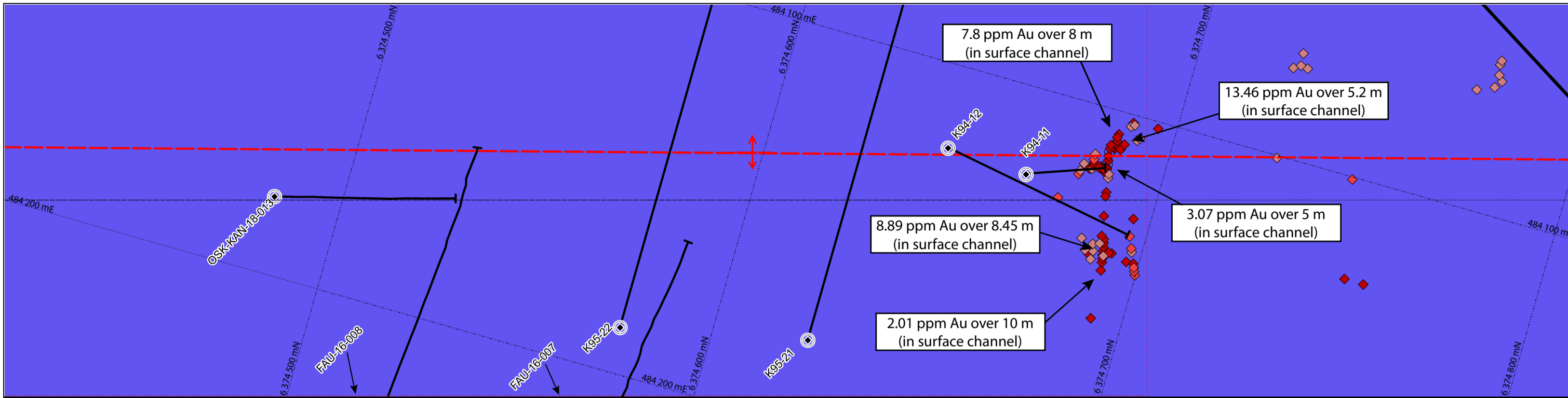
-200mRL

484 500mE

484 600mE

484 700mE

484 800mE



Geological Interpretation Symbolology

Lithology

- OVB Overburden
- S6 Black Shale
- S9 Iron Formation
- S6g Grey Shale
- I3A Gabbro
- S6-S9 Shaley Iron Formation
- F1-F2 Semi-massive, massive sulfides
- I1N Quartz Vein
- S4 Conglomerate
- OxBx Oxidized Breccia
- V3B Basalt

Linear Structures

- ↔ Shear
- ↺ F1 Overturned Antiform Axial Plane
- ↻ F1 Overturned Synform Axial Plane
- ↕ F2 Synform Axial Plane
- ↕ F2 Antiform Axial Plane

Surface Sampling (Grab & Channel)

Au ppm results

- ◆ > 3 ppm Au
- ◆ 0.5 - 3 ppm Au
- ◆ 0.05 - 0.5 ppm Au

** Results with less than 0.05 ppm Au not displayed

Drillhole Symbolology

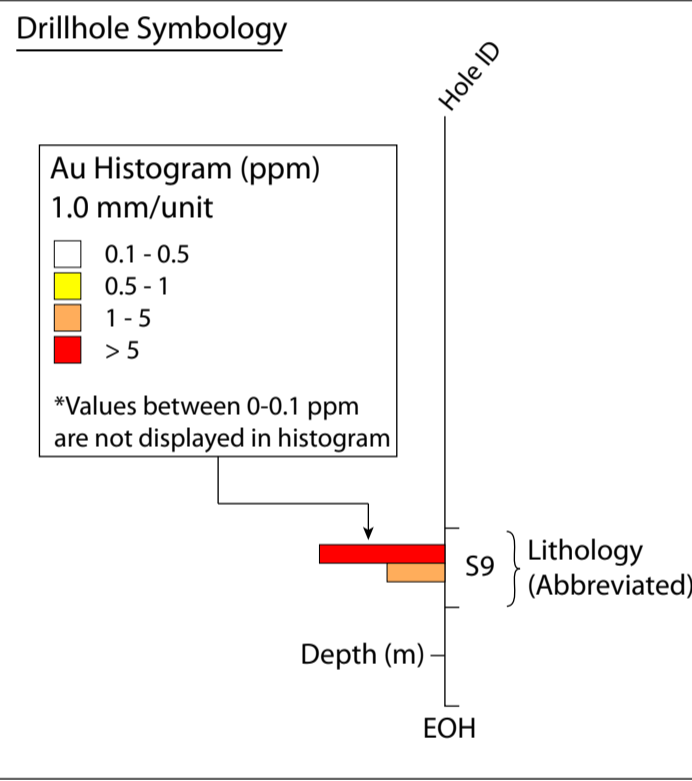
Au Histogram (ppm) 1.0 mm/unit

- 0.1 - 0.5
- 0.5 - 1
- 1 - 5
- > 5

*Values between 0-0.1 ppm are not displayed in histogram

List of Facies Abbreviations

- I3A Massive Gabbro
- I3A Chl-Ank Schistous chlorite-ankerite gabbro
- I3A Chl-Cal Schistous chlorite-calcite gabbro
- I3A GH / PQ Glomeroporphyric Gabbro
- I3A QZ Dioritic Gabbro with quartz eyes
- I4 Ultramafic Intrusif Rock*
*Interpreted as a gabbro facies
- S6b Black Shale
- S6b GP Graphitic Black Shale
- S6g Grey Shale
- S6g GP Graphitic Grey Shale
- S9B Oxide iron formation
- S9C Carbonate iron formation
- S9C ALT Altered Carbonate iron formation*
*Now referred to as "ankerite facies"
- S9C Ank Carbonate iron formation, ankerite facies
- S9C Sid Carbonate iron formation, siderite facies
- S9D Silicate iron formation
- S9E Sulfide iron formation
- S10 Chert
- S10B Carbonate chert
- S10C Silicate chert
- S10D Sulfide chert
- V3B Basalt*
*Interpreted as sheared gabbro



Section Specifications

Tolerance : ± 50m
 Scale : 1:1000
 Section Origin (top left):
 484283 mE
 6374127 mN
 200.46 RL

OSISKO MINING

Map 12
 Ferricrete Antiform Sector
 KAN PROJECT
 2018 Drilling Campaign

Date: 2018-11-13
 Author: Simon Hebert
 Office: Quebec City
 Drawing: Cynthia Lee
 Scale: 1:1000 Projection: UTM NAD 83 (Zone 19)