

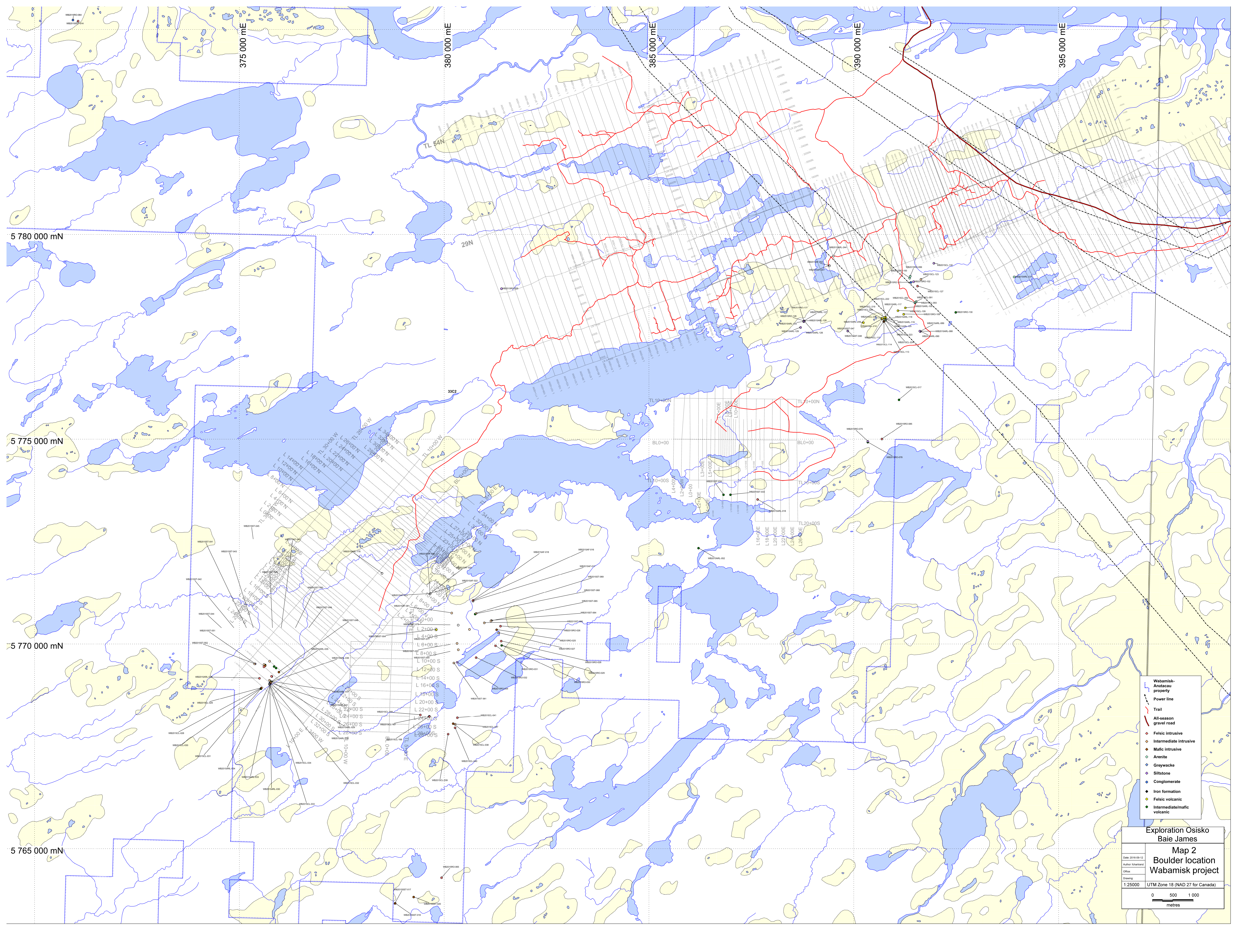
- Wabamisk-Anitacau property
- Power line
- Trail
- All-season gravel road
- Felsic intrusive
- Intermediate intrusive
- Mafic intrusive
- Arenite
- Greywacke
- Siltstone
- Iron formation
- Felsic volcanic
- Intermediate/mafic volcanic

**Exploration Osisko
Baie James**

**Map 1
Outcrop location
Wabamisk project**

Date: 2014-09-12
 Author: S. Bouchard
 Office:
 Drawing:
 1:25000 UTM Zone 18 (NAD 27 for Canada)

0 500 1000
 metres



5 780 000 mN

5 775 000 mN

5 770 000 mN

5 765 000 mN

375 000 mE

380 000 mE

385 000 mE

390 000 mE

395 000 mE

TL 54N

29N

33C2

TL 10+00N

TL 10+00E

TL 10+00N

BL0+00

BL0+00

TL 10+00S

TL 10+00S

TL 20+00S

L 14000N
L 12000N
L 10000N
L 8000N
L 6000N
L 4000N
L 2000N
L 0000N

TL 28000W
TL 26000W
TL 24000W
TL 22000W
TL 20000W
TL 18000W
TL 16000W
TL 14000W
TL 12000W
TL 10000W
TL 8000W
TL 6000W
TL 4000W
TL 2000W
TL 0000W

L 2+00 S
L 4+00 S
L 6+00 S
L 8+00 S
L 10+00 S
L 12+00 S
L 14+00 S
L 16+00 S
L 18+00 S
L 20+00 S
L 22+00 S
L 24+00 S
L 26+00 S
L 28+00 S

L 30+00 S
L 32+00 S
L 34+00 S
L 36+00 S
L 38+00 S
L 40+00 S
L 42+00 S
L 44+00 S
L 46+00 S
L 48+00 S
L 50+00 S
L 52+00 S
L 54+00 S
L 56+00 S
L 58+00 S
L 60+00 S

M 00+01
M 00+02
M 00+03
M 00+04
M 00+05
M 00+06
M 00+07
M 00+08
M 00+09
M 00+10
M 00+11
M 00+12
M 00+13
M 00+14
M 00+15
M 00+16
M 00+17
M 00+18
M 00+19
M 00+20

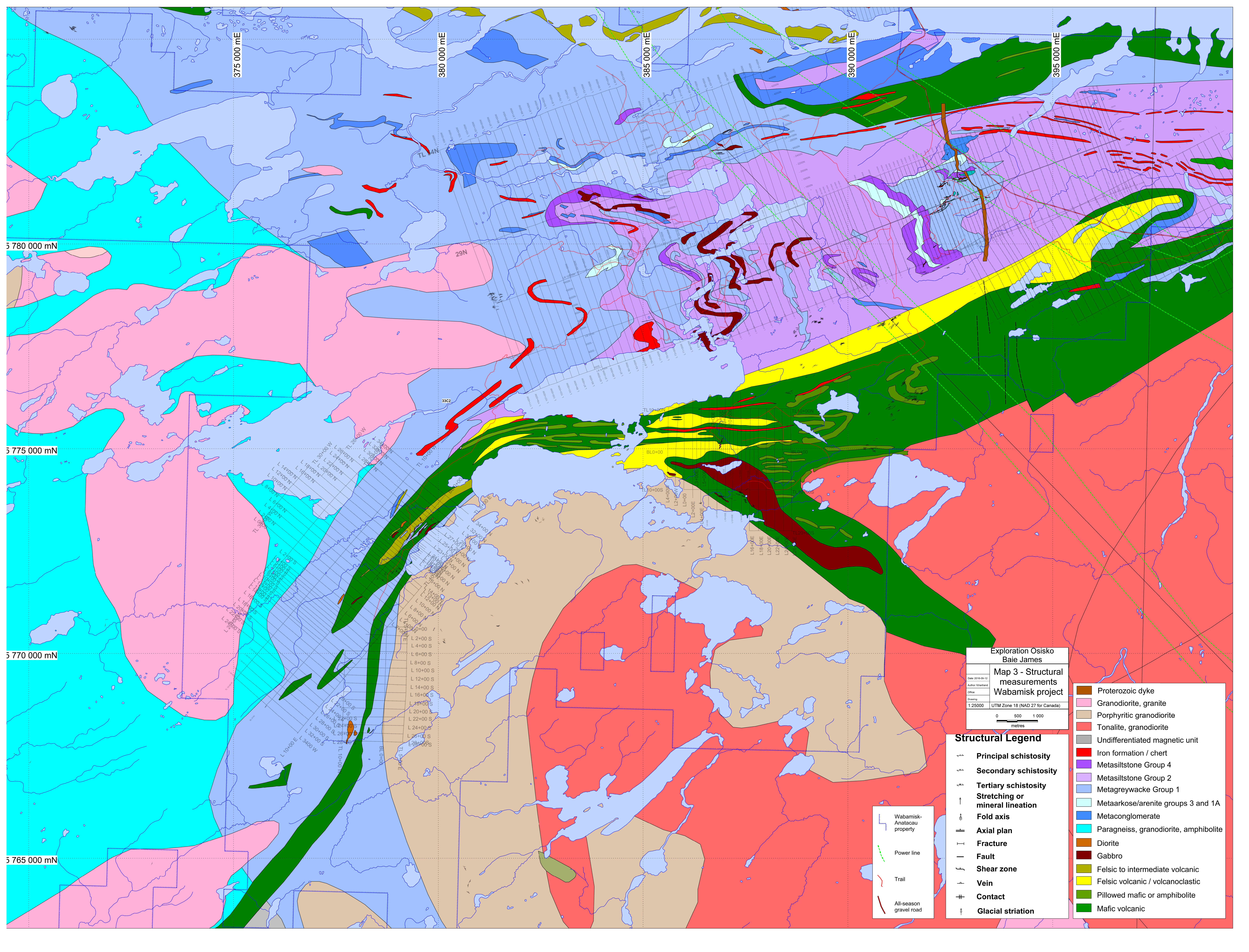
- Wabamisk-Anitacas property
- Power line
- Trail
- All-season gravel road
- Felsic intrusive
- Intermediate intrusive
- Mafic intrusive
- Arenite
- Greywacke
- Siltstone
- Conglomerate
- Iron formation
- Felsic volcanic
- Intermediate/mafic volcanic

Exploration Osisko
Baie James

Map 2
Boulder location
Wabamisk project

Date: 2016-09-12
Author: forland
Office:
Drawing:
1:25000 UTM Zone 18 (NAD 27 for Canada)

0 500 1000
metres



375 000 mE

380 000 mE

385 000 mE

390 000 mE

395 000 mE

5 780 000 mN

5 775 000 mN

5 770 000 mN

5 765 000 mN

Exploration Osisko
Baie James

Map 3 - Structural measurements Wabamisk project

Date: 2016-09-12
Author: shawcross
Office:
Drawing:
1:25000 UTM Zone 18 (NAD 27 for Canada)

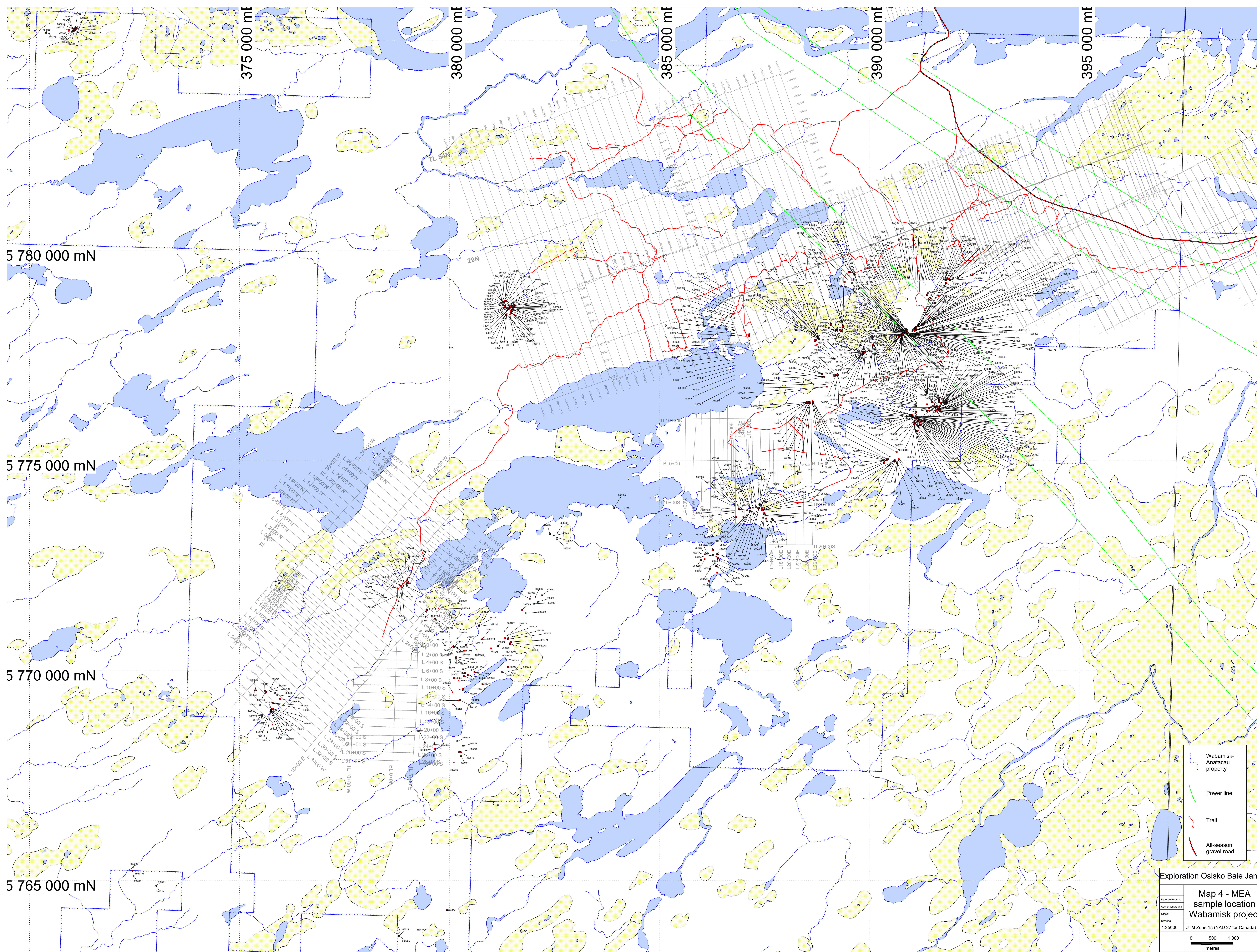
0 500 1 000 metres

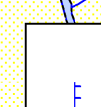

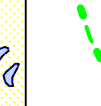

Structural Legend

- ↖ Principal schistosity
- ↗ Secondary schistosity
- ↘ Tertiary schistosity
- ↑ Stretching or mineral lineation
- ⊥ Fold axis
- ⊥ Axial plan
- ⊥ Fracture
- ⊥ Fault
- ⊥ Shear zone
- ⊥ Vein
- ⊥ Contact
- ⊥ Glacial striation

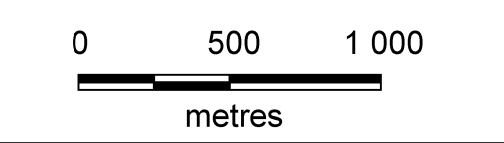
- Proterozoic dyke
- Granodiorite, granite
- Porphyritic granodiorite
- Tonalite, granodiorite
- Undifferentiated magnetic unit
- Iron formation / chert
- Metasiltstone Group 4
- Metasiltstone Group 2
- Metagreywacke Group 1
- Metaarkose/arenite groups 3 and 1A
- Metaconglomerate
- Paragneiss, granodiorite, amphibolite
- Diorite
- Gabbro
- Felsic to intermediate volcanic
- Felsic volcanic / volcanoclastic
- Pillowed mafic or amphibolite
- Mafic volcanic

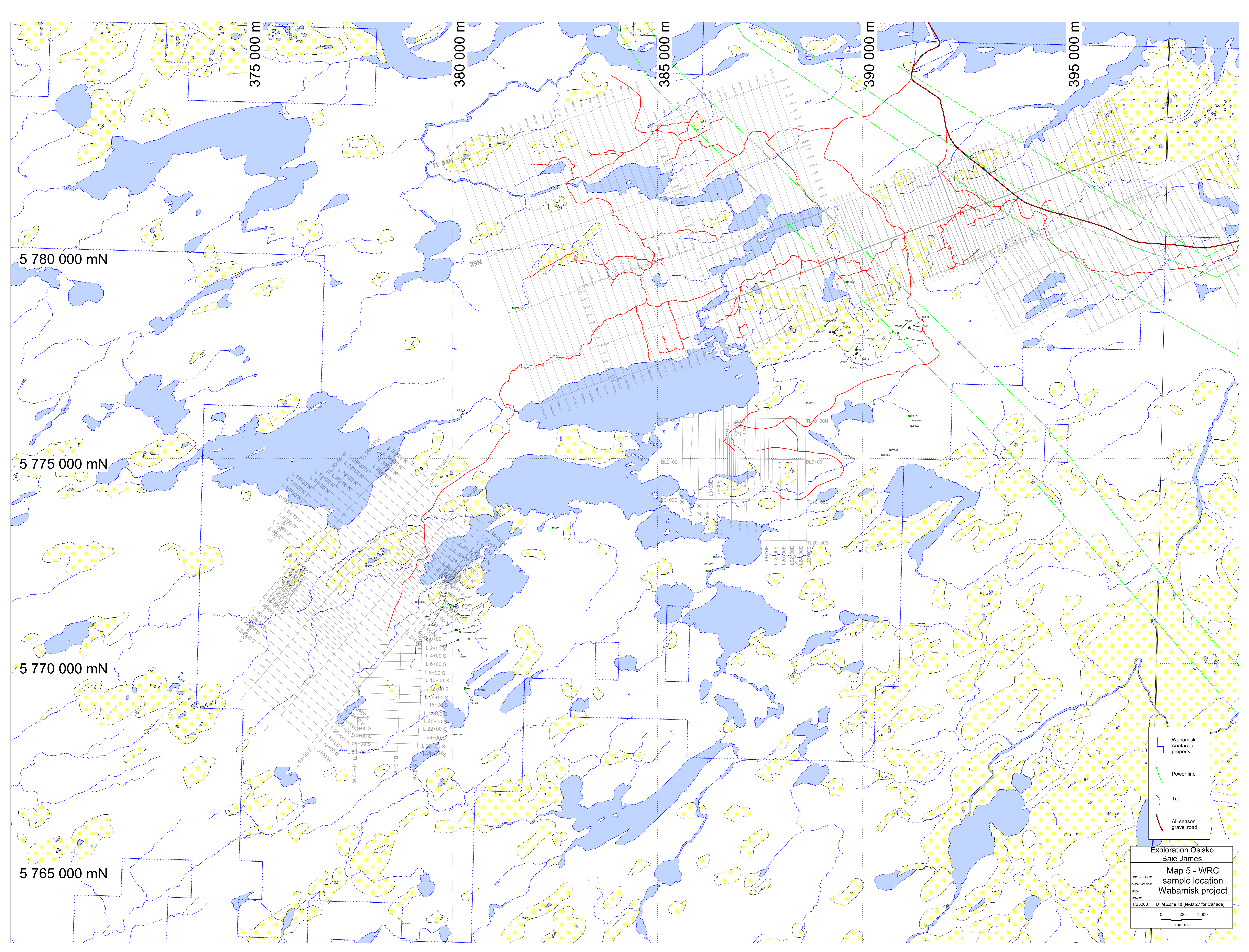
- Wabamisk-Anatacau property
- Power line
- Trail
- All-season gravel road



-  Wabamisk-Anatacuk property
-  Power line
-  Trail
-  All-season gravel road

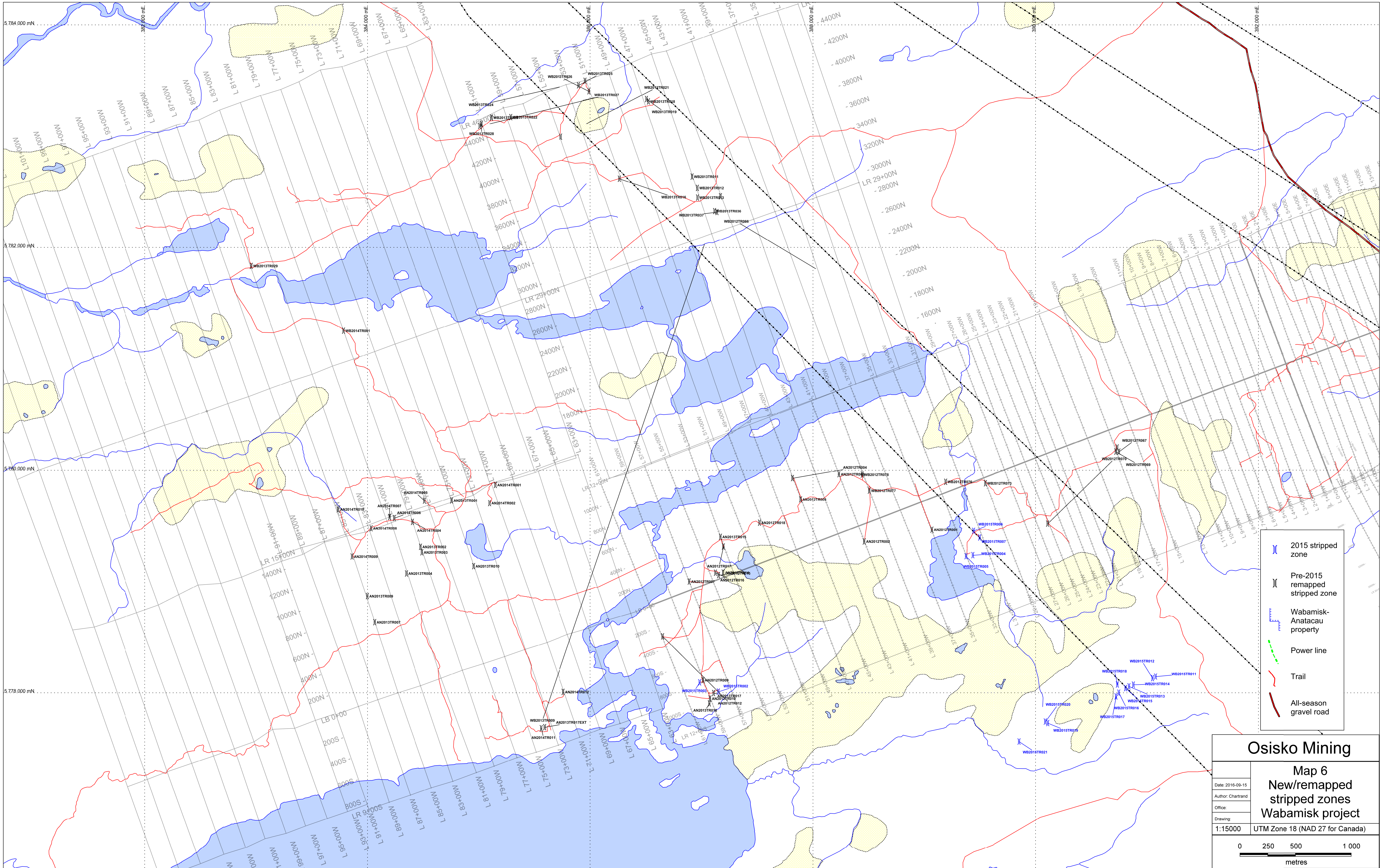
Exploration Osisko Baie Jame







| | |
|---|---|
| UoB: 2016-09-12 | Map 4 - MEA sample location Wabamisk project |
| Author: fsherman | |
| Office: | |
| Drawing: | 1:25000 UTM Zone 18 (NAD 27 for Canada) |
|  | |

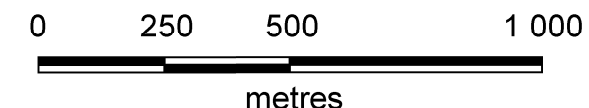


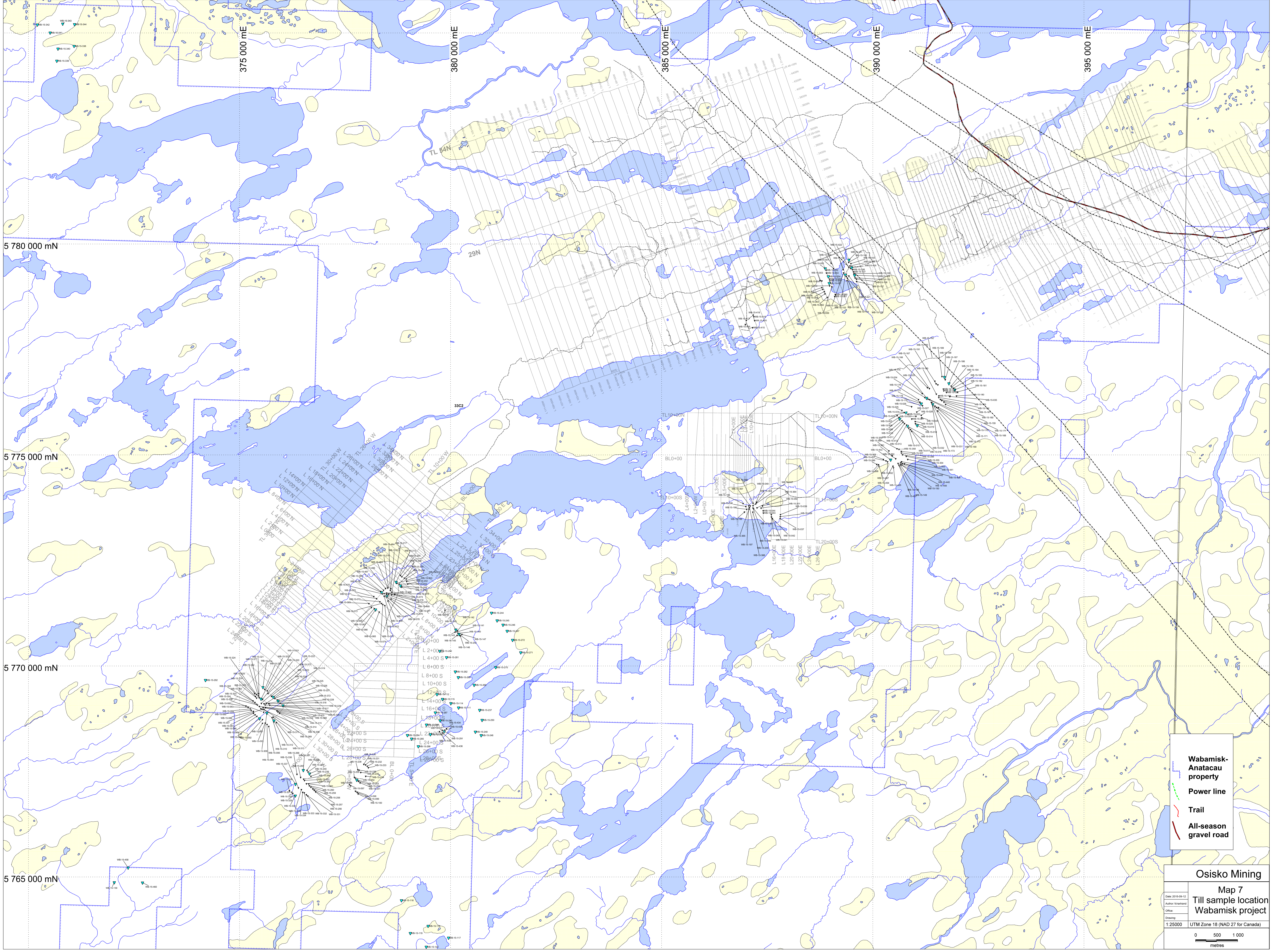
| | |
|--|----------------------------|
| | Wabamisk-Anatacau property |
| | Power line |
| | Trail |
| | All-season gravel road |

| | |
|---------------------------|---------------------------------|
| Exploration Osisko | |
| Baie James | |
| Map 5 - WRC | |
| sample location | |
| Wabamisk project | |
| Date: 2016-09-12 | Author: [unreadable] |
| Office: [unreadable] | Drawing: [unreadable] |
| 1:25000 | UTM Zone 18 (NAD 27 for Canada) |
| | |



-  2015 stripped zone
-  Pre-2015 remapped stripped zone
-  Wabamisk-Anatacau property
-  Power line
-  Trail
-  All-season gravel road

| | |
|---|---------------------------------|
| Osisko Mining | |
| Map 6 | |
| New/remapped | |
| stripped zones | |
| Wabamisk project | |
| Date: 2016-09-15 | Author: Chartrand |
| Office: | Drawing: |
| 1:15000 | UTM Zone 18 (NAD 27 for Canada) |
|  | |



5 780 000 mN

5 775 000 mN

5 770 000 mN

5 765 000 mN

375 000 mE

380 000 mE

385 000 mE

390 000 mE

395 000 mE

TL 54N
29N
33C2
TL 10+00N
BL0+00
TL 0+00N
TL 0+00S
TL 20+00S
L 14+00N
L 12+00N
L 10+00N
L 8+00N
L 6+00N
L 4+00N
L 2+00N
L 0+00N
L 28+00W
L 26+00W
L 24+00W
L 22+00W
L 20+00W
L 18+00W
L 16+00W
L 14+00W
L 12+00W
L 10+00W
L 8+00W
L 6+00W
L 4+00W
L 2+00W
L 0+00W
L 2+00S
L 4+00S
L 6+00S
L 8+00S
L 10+00S
L 12+00S
L 14+00S
L 16+00S
L 18+00S
L 20+00S
L 22+00S
L 24+00S
L 26+00S
L 28+00S
L 30+00S
L 32+00S
L 34+00S
L 36+00S
L 38+00S
L 40+00S
L 42+00S
L 44+00S
L 46+00S
L 48+00S
L 50+00S
L 52+00S
L 54+00S
L 56+00S
L 58+00S
L 60+00S
L 62+00S
L 64+00S
L 66+00S
L 68+00S
L 70+00S
L 72+00S
L 74+00S
L 76+00S
L 78+00S
L 80+00S
L 82+00S
L 84+00S
L 86+00S
L 88+00S
L 90+00S
L 92+00S
L 94+00S
L 96+00S
L 98+00S
L 100+00S
L 102+00S
L 104+00S
L 106+00S
L 108+00S
L 110+00S
L 112+00S
L 114+00S
L 116+00S
L 118+00S
L 120+00S
L 122+00S
L 124+00S
L 126+00S
L 128+00S
L 130+00S
L 132+00S
L 134+00S
L 136+00S
L 138+00S
L 140+00S
L 142+00S
L 144+00S
L 146+00S
L 148+00S
L 150+00S
L 152+00S
L 154+00S
L 156+00S
L 158+00S
L 160+00S
L 162+00S
L 164+00S
L 166+00S
L 168+00S
L 170+00S
L 172+00S
L 174+00S
L 176+00S
L 178+00S
L 180+00S
L 182+00S
L 184+00S
L 186+00S
L 188+00S
L 190+00S
L 192+00S
L 194+00S
L 196+00S
L 198+00S
L 200+00S
L 202+00S
L 204+00S
L 206+00S
L 208+00S
L 210+00S
L 212+00S
L 214+00S
L 216+00S
L 218+00S
L 220+00S
L 222+00S
L 224+00S
L 226+00S
L 228+00S
L 230+00S
L 232+00S
L 234+00S
L 236+00S
L 238+00S
L 240+00S
L 242+00S
L 244+00S
L 246+00S
L 248+00S
L 250+00S
L 252+00S
L 254+00S
L 256+00S
L 258+00S
L 260+00S
L 262+00S
L 264+00S
L 266+00S
L 268+00S
L 270+00S
L 272+00S
L 274+00S
L 276+00S
L 278+00S
L 280+00S
L 282+00S
L 284+00S
L 286+00S
L 288+00S
L 290+00S
L 292+00S
L 294+00S
L 296+00S
L 298+00S
L 300+00S
L 302+00S
L 304+00S
L 306+00S
L 308+00S
L 310+00S
L 312+00S
L 314+00S
L 316+00S
L 318+00S
L 320+00S
L 322+00S
L 324+00S
L 326+00S
L 328+00S
L 330+00S
L 332+00S
L 334+00S
L 336+00S
L 338+00S
L 340+00S
L 342+00S
L 344+00S
L 346+00S
L 348+00S
L 350+00S
L 352+00S
L 354+00S
L 356+00S
L 358+00S
L 360+00S
L 362+00S
L 364+00S
L 366+00S
L 368+00S
L 370+00S
L 372+00S
L 374+00S
L 376+00S
L 378+00S
L 380+00S
L 382+00S
L 384+00S
L 386+00S
L 388+00S
L 390+00S
L 392+00S
L 394+00S
L 396+00S
L 398+00S
L 400+00S
L 402+00S
L 404+00S
L 406+00S
L 408+00S
L 410+00S
L 412+00S
L 414+00S
L 416+00S
L 418+00S
L 420+00S
L 422+00S
L 424+00S
L 426+00S
L 428+00S
L 430+00S
L 432+00S
L 434+00S
L 436+00S
L 438+00S
L 440+00S
L 442+00S
L 444+00S
L 446+00S
L 448+00S
L 450+00S
L 452+00S
L 454+00S
L 456+00S
L 458+00S
L 460+00S
L 462+00S
L 464+00S
L 466+00S
L 468+00S
L 470+00S
L 472+00S
L 474+00S
L 476+00S
L 478+00S
L 480+00S
L 482+00S
L 484+00S
L 486+00S
L 488+00S
L 490+00S
L 492+00S
L 494+00S
L 496+00S
L 498+00S
L 500+00S
L 502+00S
L 504+00S
L 506+00S
L 508+00S
L 510+00S
L 512+00S
L 514+00S
L 516+00S
L 518+00S
L 520+00S
L 522+00S
L 524+00S
L 526+00S
L 528+00S
L 530+00S
L 532+00S
L 534+00S
L 536+00S
L 538+00S
L 540+00S
L 542+00S
L 544+00S
L 546+00S
L 548+00S
L 550+00S
L 552+00S
L 554+00S
L 556+00S
L 558+00S
L 560+00S
L 562+00S
L 564+00S
L 566+00S
L 568+00S
L 570+00S
L 572+00S
L 574+00S
L 576+00S
L 578+00S
L 580+00S
L 582+00S
L 584+00S
L 586+00S
L 588+00S
L 590+00S
L 592+00S
L 594+00S
L 596+00S
L 598+00S
L 600+00S
L 602+00S
L 604+00S
L 606+00S
L 608+00S
L 610+00S
L 612+00S
L 614+00S
L 616+00S
L 618+00S
L 620+00S
L 622+00S
L 624+00S
L 626+00S
L 628+00S
L 630+00S
L 632+00S
L 634+00S
L 636+00S
L 638+00S
L 640+00S
L 642+00S
L 644+00S
L 646+00S
L 648+00S
L 650+00S
L 652+00S
L 654+00S
L 656+00S
L 658+00S
L 660+00S
L 662+00S
L 664+00S
L 666+00S
L 668+00S
L 670+00S
L 672+00S
L 674+00S
L 676+00S
L 678+00S
L 680+00S
L 682+00S
L 684+00S
L 686+00S
L 688+00S
L 690+00S
L 692+00S
L 694+00S
L 696+00S
L 698+00S
L 700+00S
L 702+00S
L 704+00S
L 706+00S
L 708+00S
L 710+00S
L 712+00S
L 714+00S
L 716+00S
L 718+00S
L 720+00S
L 722+00S
L 724+00S
L 726+00S
L 728+00S
L 730+00S
L 732+00S
L 734+00S
L 736+00S
L 738+00S
L 740+00S
L 742+00S
L 744+00S
L 746+00S
L 748+00S
L 750+00S
L 752+00S
L 754+00S
L 756+00S
L 758+00S
L 760+00S
L 762+00S
L 764+00S
L 766+00S
L 768+00S
L 770+00S
L 772+00S
L 774+00S
L 776+00S
L 778+00S
L 780+00S
L 782+00S
L 784+00S
L 786+00S
L 788+00S
L 790+00S
L 792+00S
L 794+00S
L 796+00S
L 798+00S
L 800+00S
L 802+00S
L 804+00S
L 806+00S
L 808+00S
L 810+00S
L 812+00S
L 814+00S
L 816+00S
L 818+00S
L 820+00S
L 822+00S
L 824+00S
L 826+00S
L 828+00S
L 830+00S
L 832+00S
L 834+00S
L 836+00S
L 838+00S
L 840+00S
L 842+00S
L 844+00S
L 846+00S
L 848+00S
L 850+00S
L 852+00S
L 854+00S
L 856+00S
L 858+00S
L 860+00S
L 862+00S
L 864+00S
L 866+00S
L 868+00S
L 870+00S
L 872+00S
L 874+00S
L 876+00S
L 878+00S
L 880+00S
L 882+00S
L 884+00S
L 886+00S
L 888+00S
L 890+00S
L 892+00S
L 894+00S
L 896+00S
L 898+00S
L 900+00S
L 902+00S
L 904+00S
L 906+00S
L 908+00S
L 910+00S
L 912+00S
L 914+00S
L 916+00S
L 918+00S
L 920+00S
L 922+00S
L 924+00S
L 926+00S
L 928+00S
L 930+00S
L 932+00S
L 934+00S
L 936+00S
L 938+00S
L 940+00S
L 942+00S
L 944+00S
L 946+00S
L 948+00S
L 950+00S
L 952+00S
L 954+00S
L 956+00S
L 958+00S
L 960+00S
L 962+00S
L 964+00S
L 966+00S
L 968+00S
L 970+00S
L 972+00S
L 974+00S
L 976+00S
L 978+00S
L 980+00S
L 982+00S
L 984+00S
L 986+00S
L 988+00S
L 990+00S
L 992+00S
L 994+00S
L 996+00S
L 998+00S
L 1000+00S

- Wabamisk-Anatacau property
- Power line
- Trail
- All-season gravel road

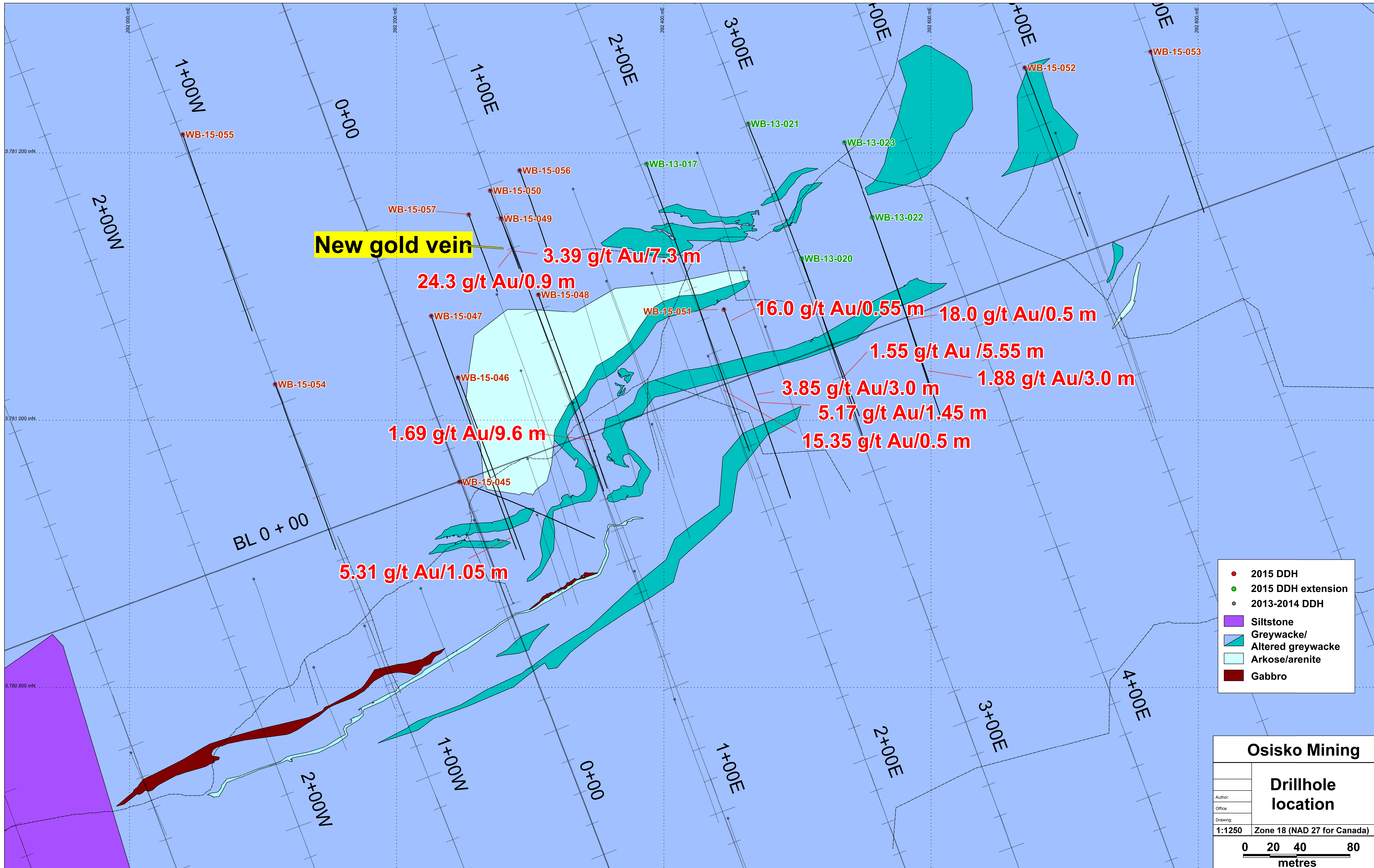
Osisko Mining

Map 7
Till sample location
Wabamisk project

Date: 2016-06-12
Author: [unreadable]
Office: [unreadable]
Drawing: [unreadable]

1:25000 UTM Zone 18 (NAD 27 for Canada)

0 500 1000 metres



New gold vein

3.39 g/t Au/7.3 m
 24.3 g/t Au/0.9 m
 16.0 g/t Au/0.55 m
 18.0 g/t Au/0.5 m
 1.55 g/t Au /5.55 m
 3.85 g/t Au/3.0 m
 1.88 g/t Au/3.0 m
 5.17 g/t Au/1.45 m
 15.35 g/t Au/0.5 m
 1.69 g/t Au/9.6 m
 5.31 g/t Au/1.05 m

- 2015 DDH
- 2015 DDH extension
- 2013-2014 DDH
- Siltstone
- Greywacke/
Altered greywacke
- Arkose/arenite
- Gabbro

| | |
|---------------------------|-----------------------------|
| Osisko Mining | |
| Drillhole location | |
| Author: | |
| Office: | |
| Drawing: | |
| 1:1250 | Zone 18 (NAD 27 for Canada) |
| | |