

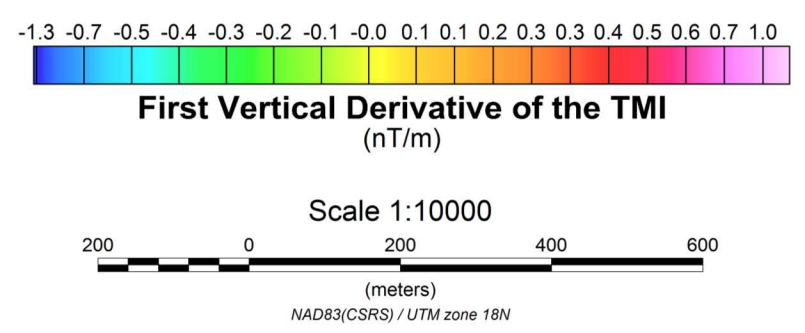
- General legend**
- Topographic contours (15m)
 - Road, trail
 - Wetland
 - Lake
 - Water stream
 - Property claim
 - 3D magnetic model limits
 - MERN historic DDH

- Geological legend**
- | Symb. | Code | Description |
|--------------|------|------------------------|
| [Light Blue] | OB | overburden |
| [Yellow] | V1 | felsic volcanic |
| [Green] | V2 | intermediate volcanic |
| [Dark Green] | V3 | mafic volcanic |
| [Red] | I1 | felsic intrusive |
| [Orange] | I2 | intermediate intrusive |
| [Brown] | I3 | mafic intrusive |
| [Dark Brown] | I4 | ultra-mafic intrusive |
| [Grey] | M8 | schist |
| [Dark Grey] | M16 | amphibolite |
| [Black] | S10 | chert |

- Contours**
- | Level | Value |
|---------|----------|
| Level 1 | : 2 mSI |
| Level 2 | : 8 mSI |
| Level 3 | : 16 mSI |
| Level 4 | : 32 mSI |

- Magnetic Inversion Model Specifications**
- | | |
|-----------------------------|-----------------------------------|
| Inversion type | : Magnetic Vector Inversion (MVI) |
| Voxel horizontal mesh | : 20 m x 20 m |
| Voxel nominal vertical mesh | : 5 m |
| Data fit | : 1 nT |
| Voxel size (XYZ) | : 198 x 173 x 82 cells |

- Original Survey Data Specifications**
- | | |
|---------------------------|--------------|
| Survey platform | : Helicopter |
| Line spacing | : 100 m |
| Line orientation | : N160 |
| Average Mag sensor height | : 63 m |



BLACK WIDOW RESOURCES

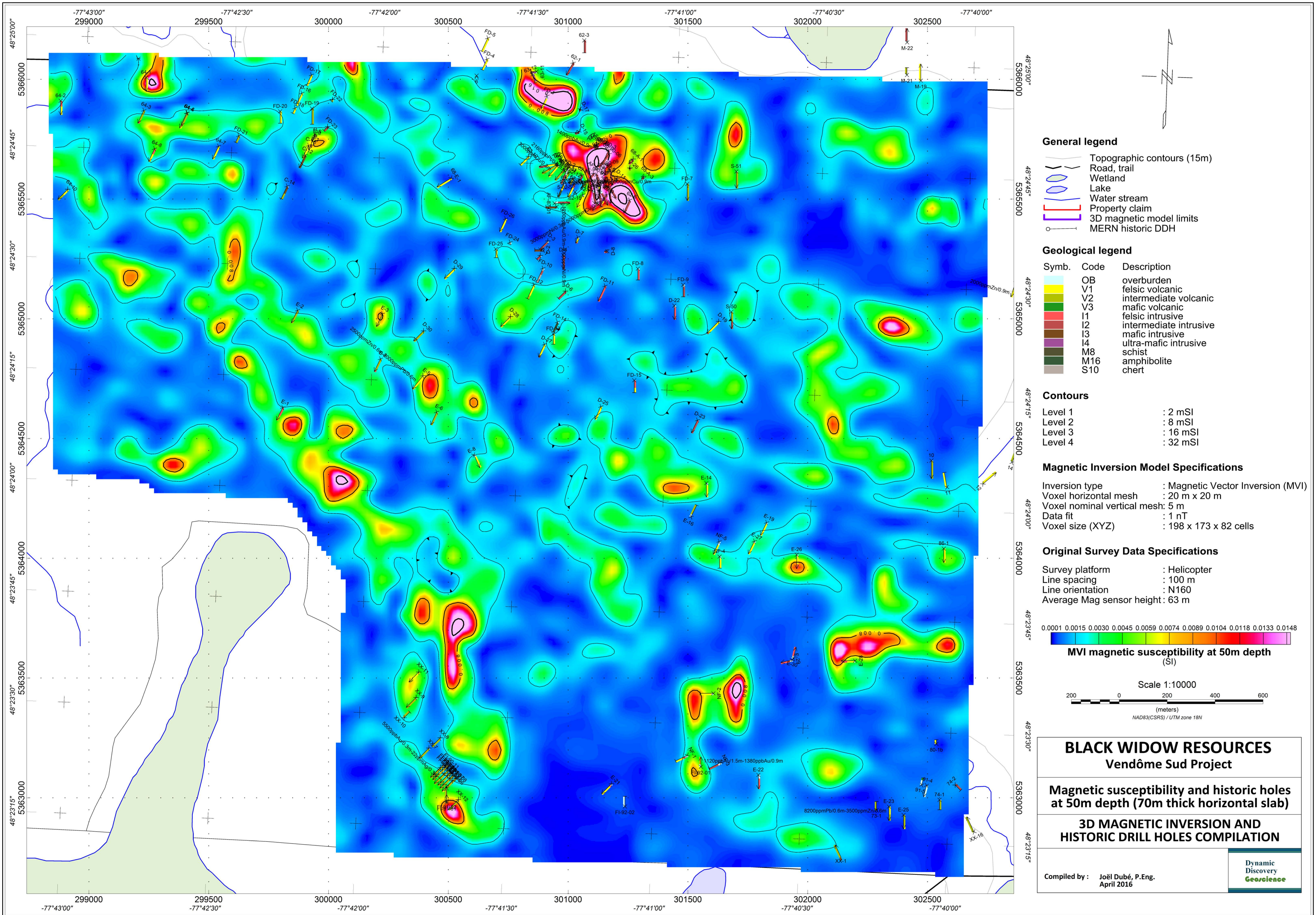
Vendôme Sud Project

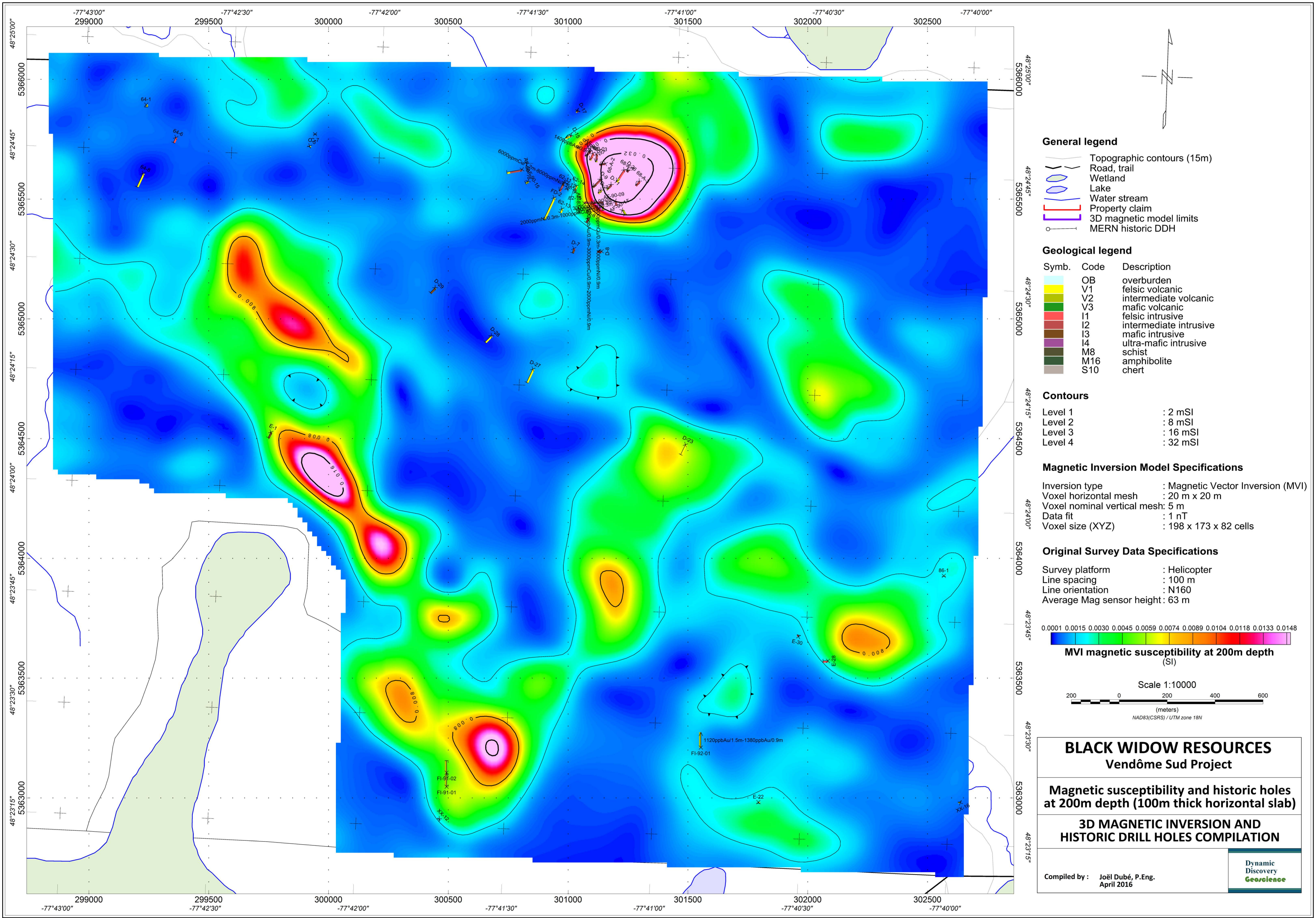
First Vertical Derivative of TMI & MVI susceptibility contours at 50m depth

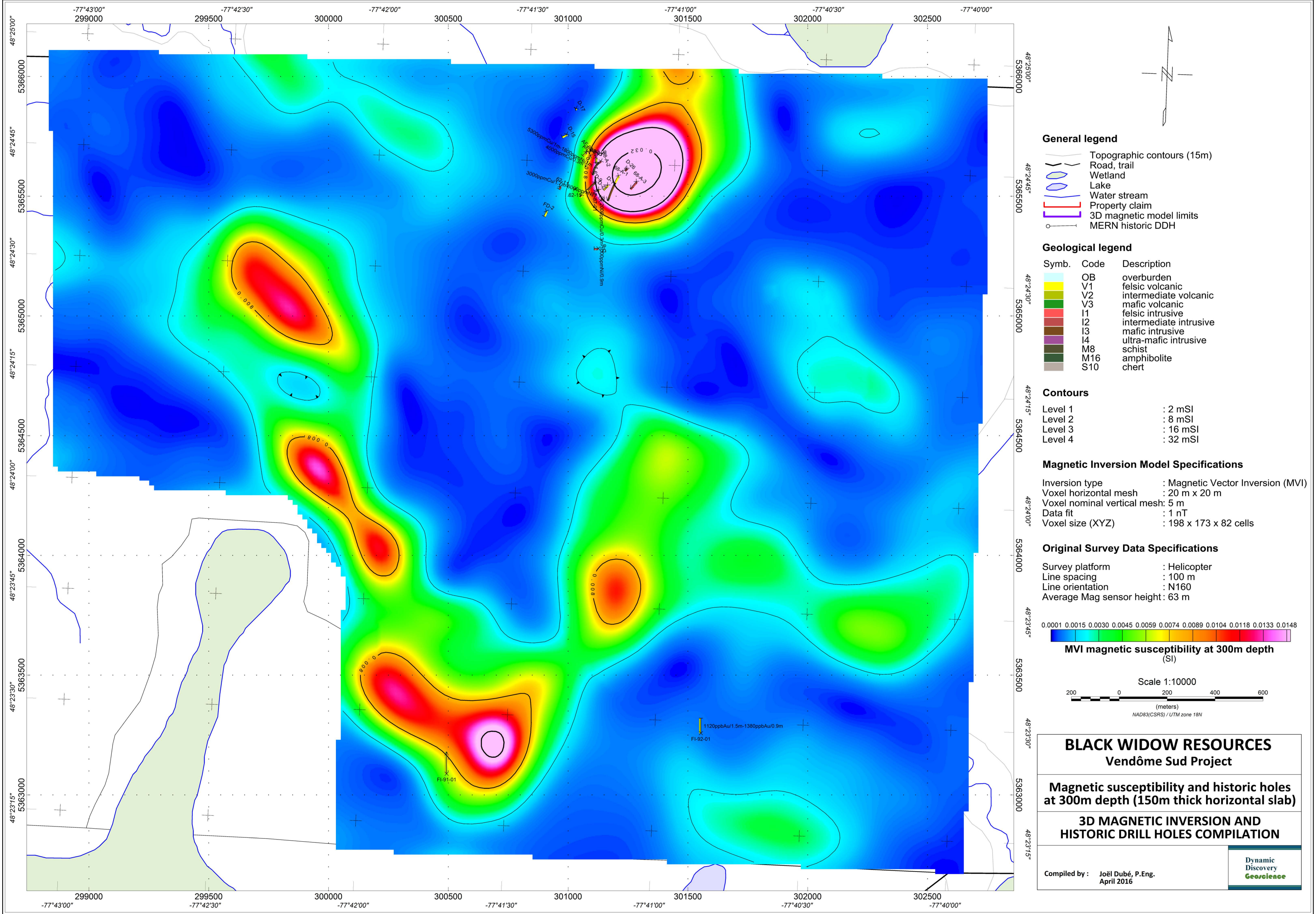
3D MAGNETIC INVERSION AND HISTORIC DRILL HOLES COMPILATION

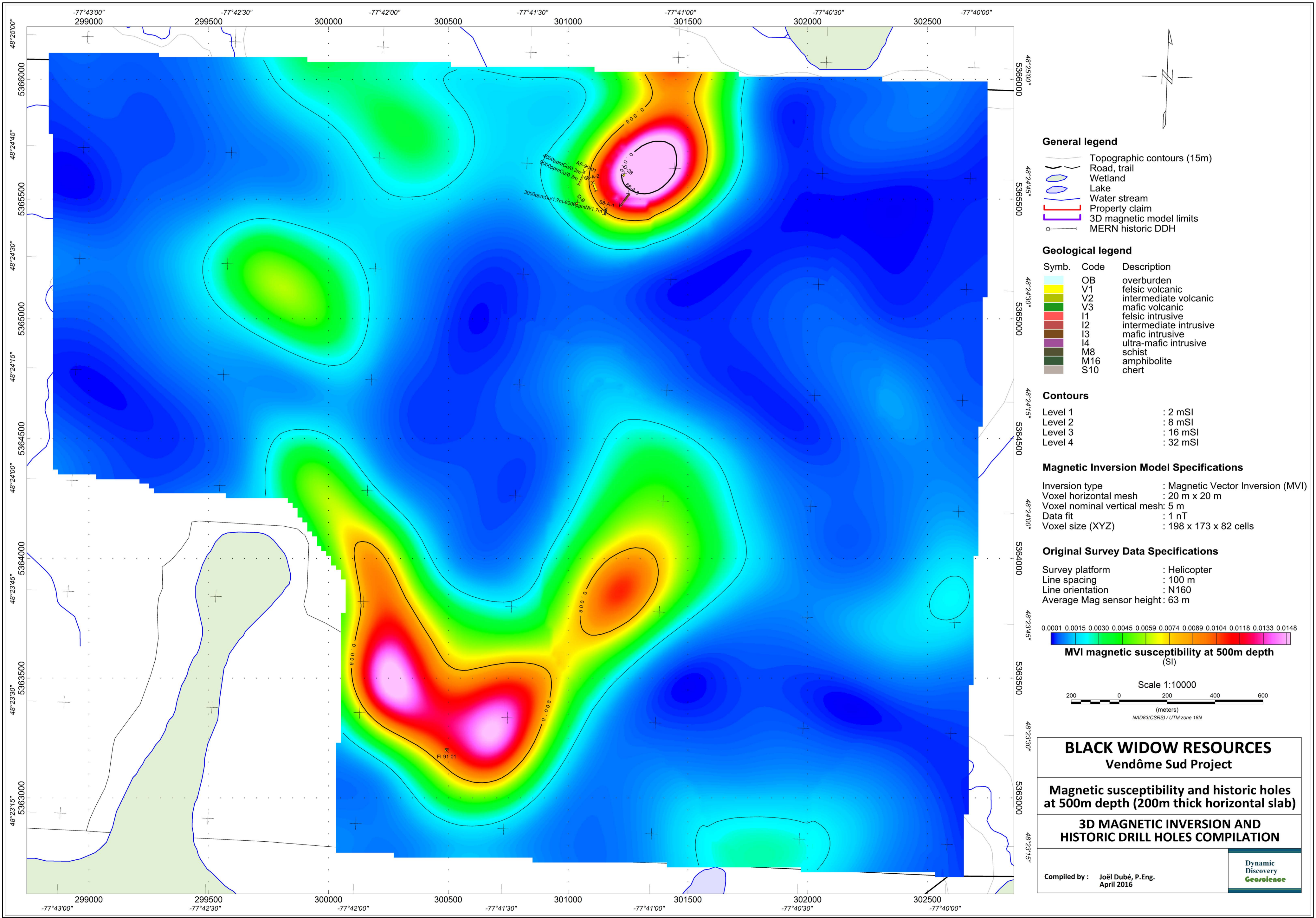
Compiled by : Joël Dubé, P.Eng.
April 2016

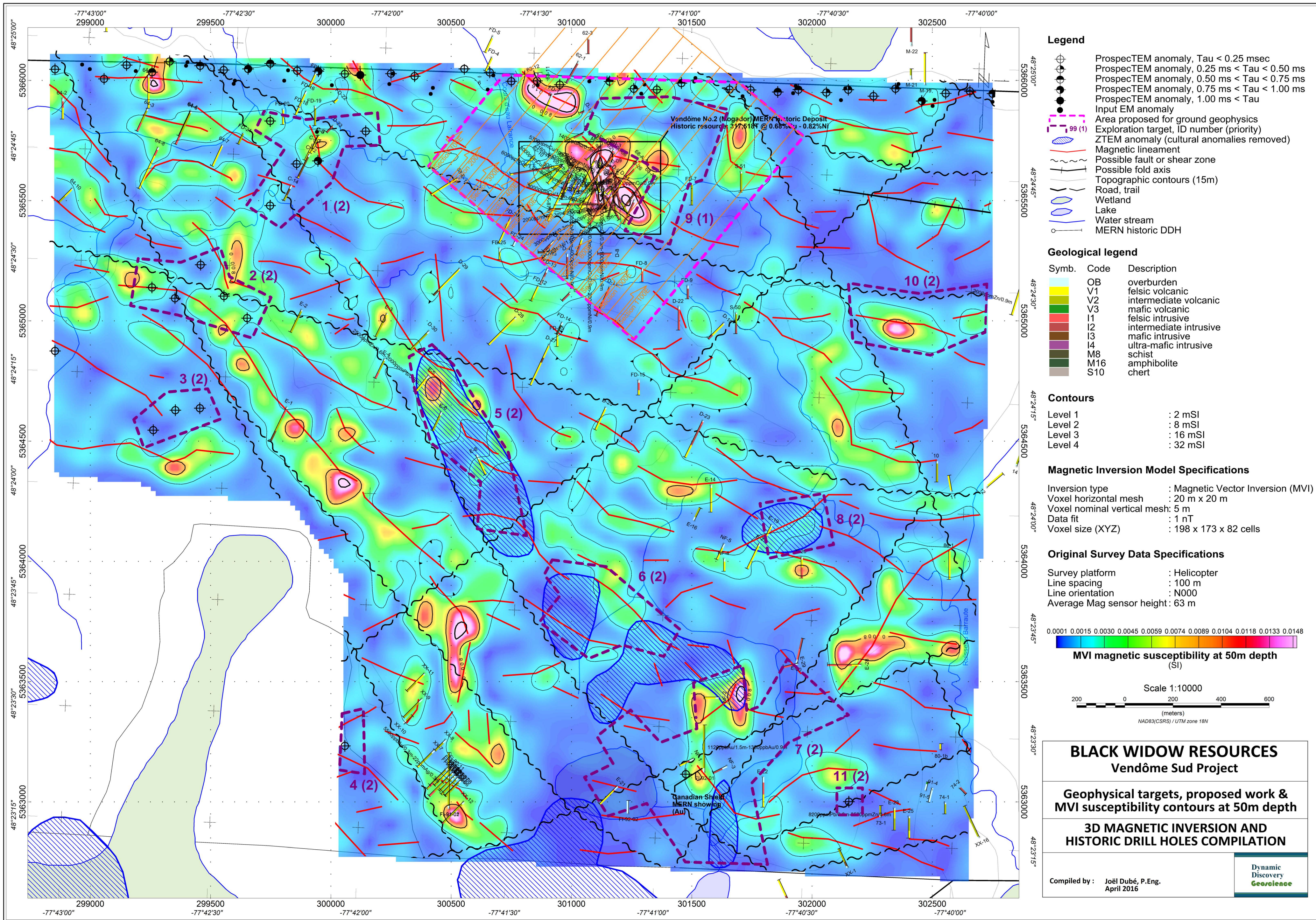
Dynamic
Discovery
Geoscience











- Legend**
- ProspectTEM anomaly, $\tau < 0.25$ msec
 - ProspectTEM anomaly, $0.25 \text{ ms} < \tau < 0.50 \text{ ms}$
 - ProspectTEM anomaly, $0.50 \text{ ms} < \tau < 0.75 \text{ ms}$
 - ProspectTEM anomaly, $0.75 \text{ ms} < \tau < 1.00 \text{ ms}$
 - ProspectTEM anomaly, $1.00 \text{ ms} < \tau$
 - Input EM anomaly
 - Area proposed for ground geophysics
 - Exploration target, ID number (priority)
 - ZTEM anomaly (cultural anomalies removed)
 - Magnetic lineament
 - Possible fault or shear zone
 - Possible fold axis
 - Topographic contours (15m)
 - Road, trail
 - Wetland
 - Lake
 - Water stream
 - MERN historic DDH

Geological legend

Symb.	Code	Description
[Yellow]	OB	overburden
[Light Green]	V1	felsic volcanic
[Medium Green]	V2	intermediate volcanic
[Dark Green]	V3	mafic volcanic
[Red]	I1	felsic intrusive
[Orange]	I2	intermediate intrusive
[Brown]	I3	mafic intrusive
[Dark Brown]	I4	ultra-mafic intrusive
[Dark Green]	M8	schist
[Dark Green]	M16	amphibolite
[Grey]	S10	chert

Contours

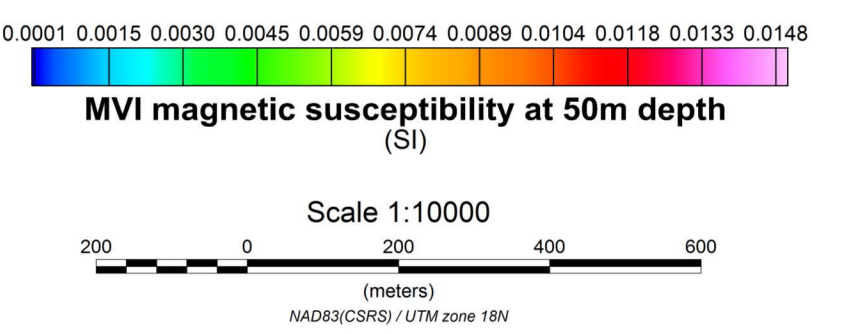
Level 1	: 2 mSI
Level 2	: 8 mSI
Level 3	: 16 mSI
Level 4	: 32 mSI

Magnetic Inversion Model Specifications

Inversion type	: Magnetic Vector Inversion (MVI)
Voxel horizontal mesh	: 20 m x 20 m
Voxel nominal vertical mesh:	5 m
Data fit	: 1 nT
Voxel size (XYZ)	: 198 x 173 x 82 cells

Original Survey Data Specifications

Survey platform	: Helicopter
Line spacing	: 100 m
Line orientation	: N000
Average Mag sensor height	: 63 m



BLACK WIDOW RESOURCES

Vendôme Sud Project

Geophysical targets, proposed work & MVI susceptibility contours at 50m depth

3D MAGNETIC INVERSION AND HISTORIC DRILL HOLES COMPILATION

Compiled by : Joël Dubé, P.Eng.
April 2016

Dynamic
Discovery
Geoscience