

6595000

Map 1

6590000

4500000

4550000

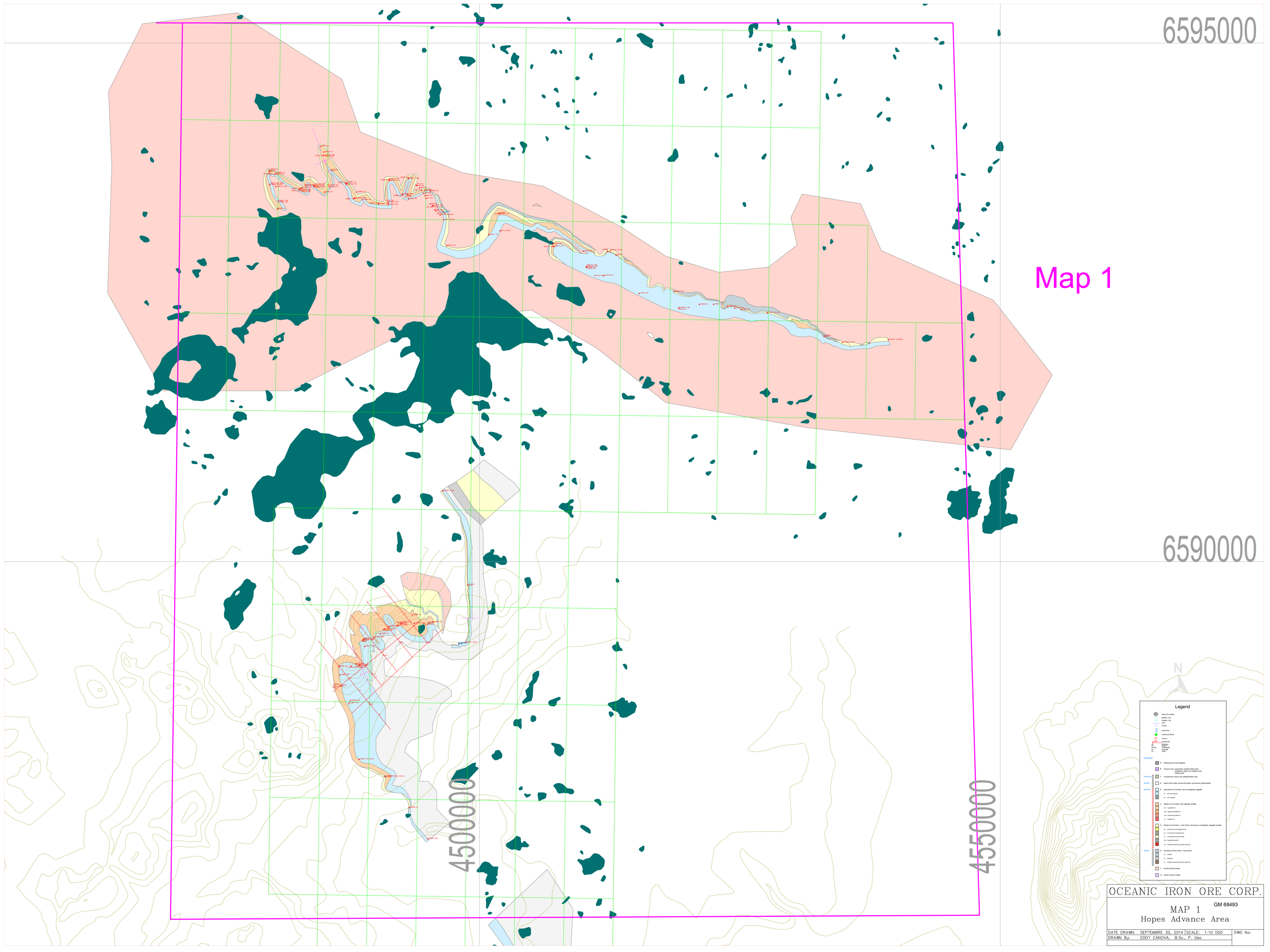
Legend

- Water
- Land
- Contour
- Infrastructure
- Other

OCEANIC IRON ORE CORP.

MAP 1
Hopes Advance Area

DATE DRAWN: SEPTEMBER 30, 2014 | SCALE: 1:10 000 | DWG No: GM 68493
DRAWN BY: EDDY CANOVA, B.Sc., P. Geog.



440,000

445,000

450,000

455,000

6,645,000

6,640,000

Map 3

Legend

- Water:
 - Water (Blue)
 - Water (Light Blue)
 - Water (Dark Blue)
 - Water (Green)
 - Water (Yellow)
 - Water (Orange)
 - Water (Red)
 - Water (Purple)
- Topography:
 - Contour (Brown)
 - Spot (Black)
 - Spot (Red)
 - Spot (Green)
 - Spot (Blue)
 - Spot (Yellow)
 - Spot (Orange)
 - Spot (Red)
 - Spot (Purple)
- Infrastructure:
 - Power Line (Black)
 - Water Line (Blue)
 - Gas Line (Red)
 - Oil Line (Yellow)
 - Other (Green)
- Other:
 - Other (Black)
 - Other (Red)
 - Other (Green)
 - Other (Blue)
 - Other (Yellow)
 - Other (Orange)
 - Other (Red)
 - Other (Purple)

OCEANIC IRON ORE CORP.

GM 68493

MAP 3
Morgan Lake

DATE DRAWN: SEPTEMBER 30, 2014 SCALE: 1:20,000 DWG No:
DRAWN By: EDDY CANOVA, B.Sc., P. Geo.

6,710,000

420,000

425,000

430,000

MAP 5

6,705,000



Legend

- Drill TR + Blows
- Blasting Dip
- Refill Dip
- Fault
- Contour
- Lake Shore
- Felsenmeer Blasts
- Quarry
- Dike
- Barrage Dam
- Dam
- Pipeline
- Road
- Power

Formation

- 9 Pleistocene and recent deposits
- 8 Silurian rocks: argillite, with shale and chert, magnetite, galena and arsenic veins, dolomite lenses
- 7 Unconsolidated volcanic and metamorphic rocks
- 6 Upper Schist: gneiss, schists, and chlorite schists
- 5 Carbonate Iron Formation, with magnetite, magnetite
 - 5a with magnetite
 - 5b with magnetite
- 4 Middle Iron Formation, with magnetite, hematite
 - 4a Magnetite (M)
 - 4b Magnetite (M) with hematite
 - 4c Magnetite (M) with hematite
 - 4d Magnetite (M)
- 3 Middle Iron Formation: Lower Schist, with garnet, hornblende, magnetite, hematite
 - 3a garnet and hornblende zone
 - 3b hornblende magnetite zone
 - 3c hornblende magnetite zone
 - 3d Magnetite (M)
 - 3e Magnetite (M) with hematite
- 2 Quartzite and mica schist: "Upper Schist"
 - 2a Quartzite
 - 2b mica schist
 - 2c Magnetite (M) with hematite
- 1 Granite Gneiss Complex
 - 1a Eastern Granite Complex

OCEANIC IRON ORE CORP.

MAP 5
Roberts Lake East Area

GM 68493

DATE DRAWN: SEPTEMBRE 30, 2014 SCALE: 1:15 000
DRAWN By: EDDY CANOVA, B.Sc., P. Geo. DWG No:

