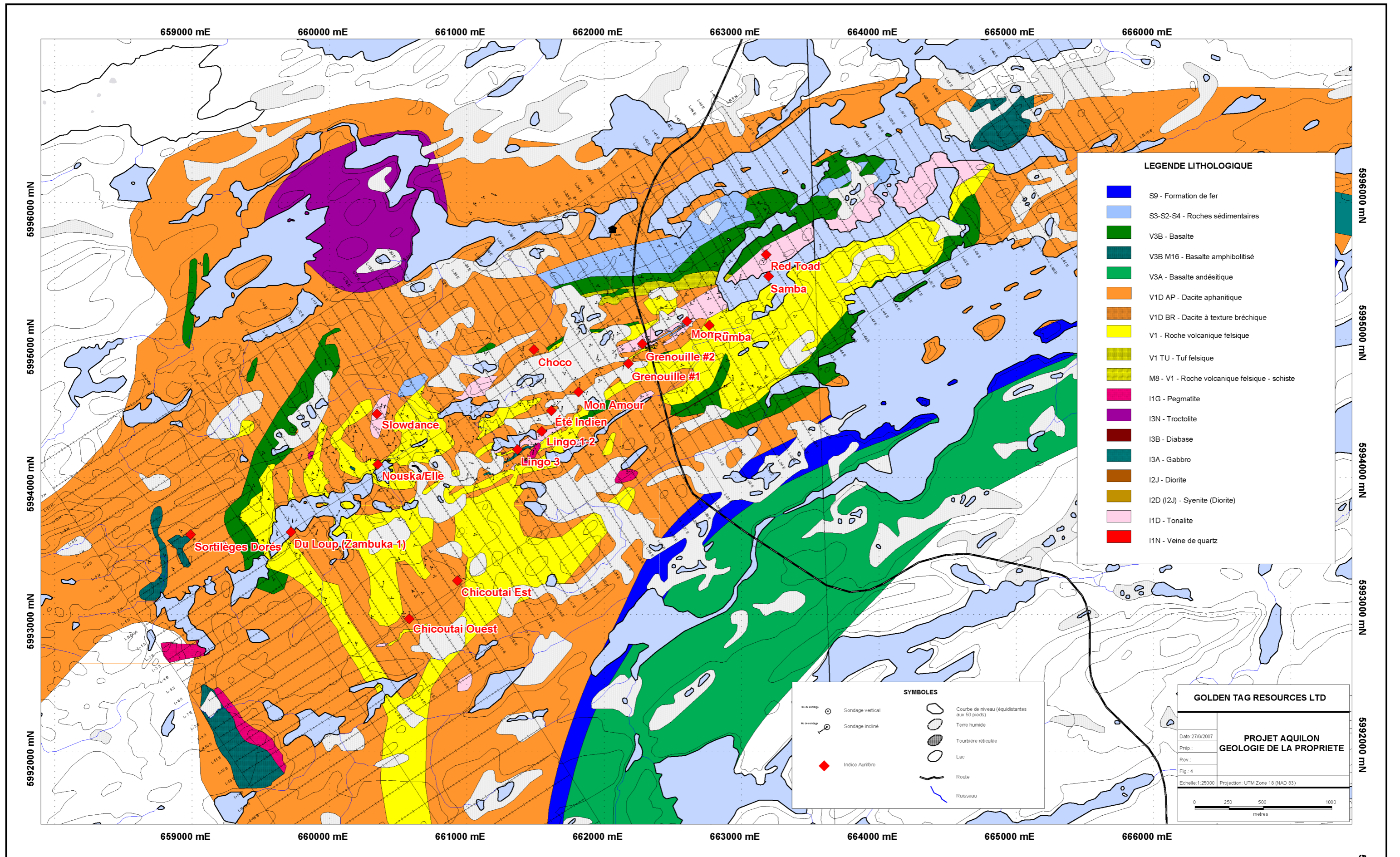


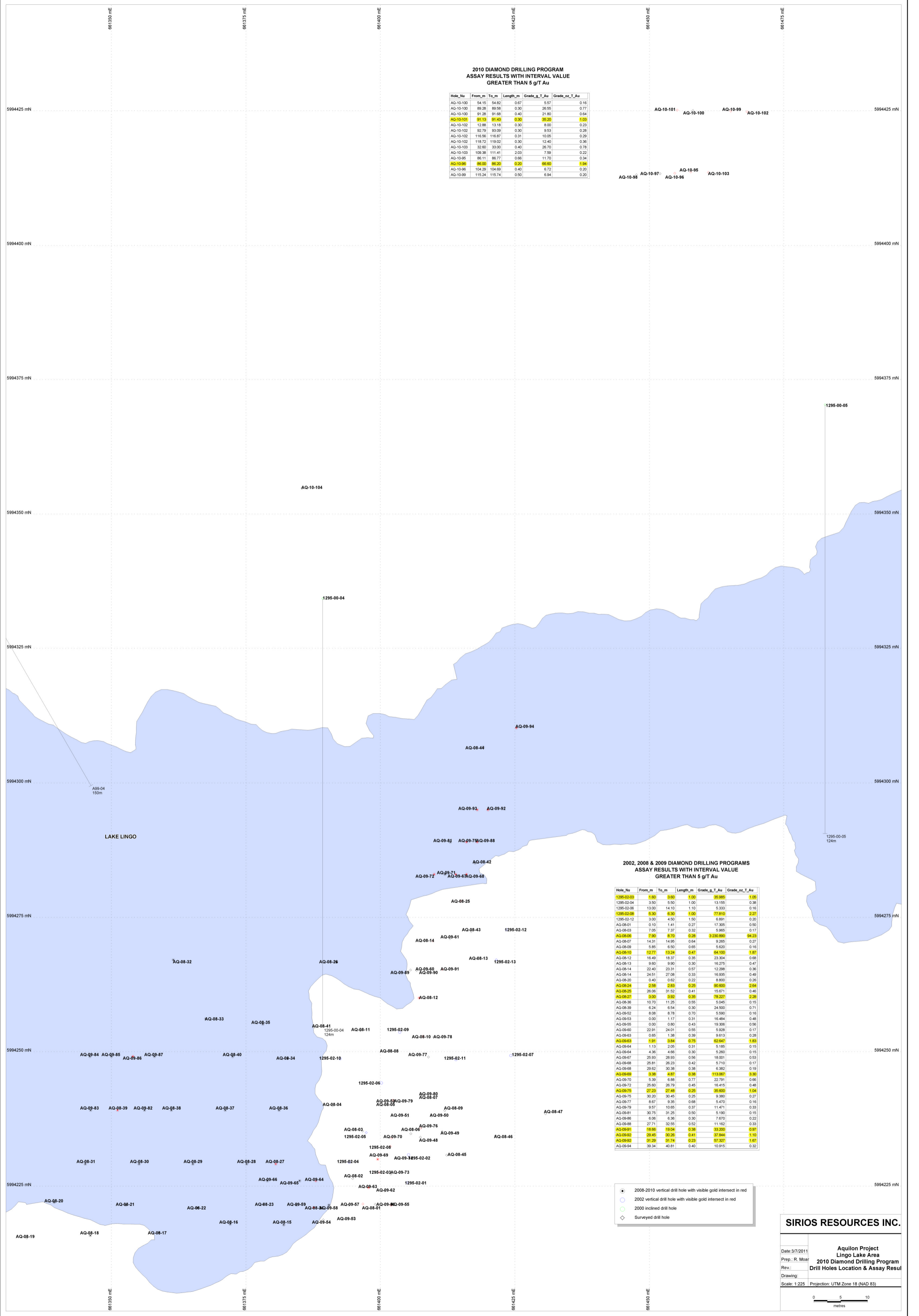
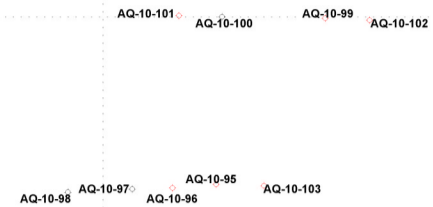
LEGENDE
 [Outline] Titres miniers détenus par Sirius 40 pct/ Golden Tag 40pct / Soquem 20pct

GOLDEN TAG RESOURCES LTD	
Date: 20/01/2009	PROJET AQUILON LOCALISATION DES TITRES MINIERS
Prep.: R. Moar	
Rev.:	
Fig. 2	Scale: 1:50000 Projection: UTM Zone 18 (NAD 83)



2010 DIAMOND DRILLING PROGRAM
ASSAY RESULTS WITH INTERVAL VALUE
GREATER THAN 5 g/T Au

Hole_No	From_m	To_m	Length_m	Grade_g_T_Au	Grade_of_T_Au
AQ-10-100	54.15	54.82	0.67	5.57	0.16
AQ-10-100	89.28	89.58	0.30	26.95	0.77
AQ-10-100	91.28	91.58	0.40	21.80	0.64
AQ-10-101	91.13	91.43	0.30	35.29	1.03
AQ-10-102	12.88	13.18	0.30	8.00	0.23
AQ-10-102	92.79	93.09	0.30	9.53	0.28
AQ-10-102	116.56	116.87	0.31	10.05	0.29
AQ-10-102	118.72	119.02	0.30	12.40	0.36
AQ-10-103	32.00	33.00	0.40	26.70	0.78
AQ-10-103	109.38	111.41	2.03	7.59	0.22
AQ-10-95	86.11	86.77	0.66	11.70	0.34
AQ-10-96	86.00	86.30	0.30	66.69	1.94
AQ-10-96	104.29	104.69	0.40	6.72	0.20
AQ-10-99	115.24	115.74	0.50	6.94	0.20



2002, 2008 & 2009 DIAMOND DRILLING PROGRAMS
ASSAY RESULTS WITH INTERVAL VALUE
GREATER THAN 5 g/T Au

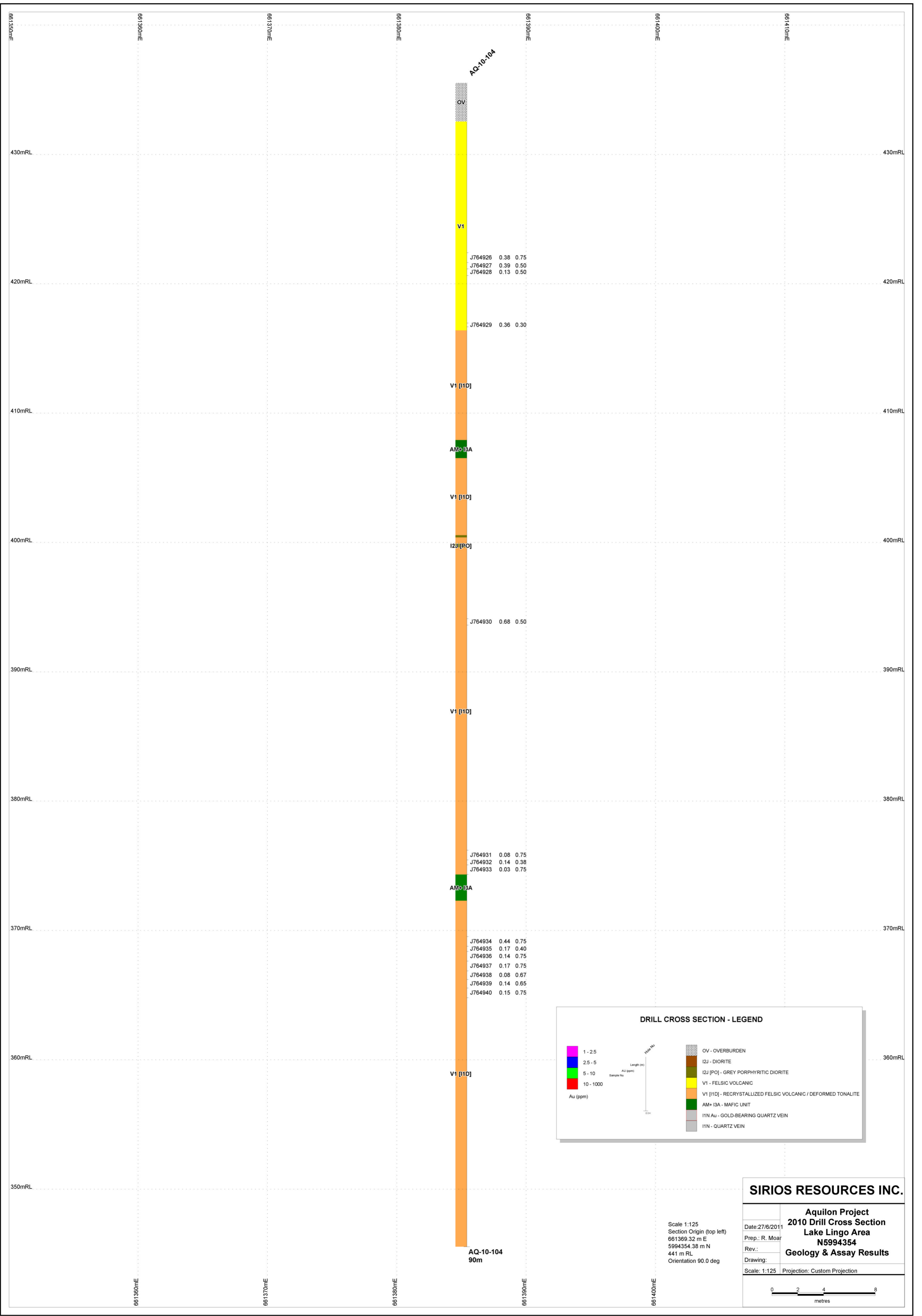
Hole_No	From_m	To_m	Length_m	Grade_g_T_Au	Grade_of_T_Au
1295-02-03	1.69	3.05	1.00	35.955	1.05
1295-02-04	3.50	5.50	1.00	13.155	0.38
1295-02-06	11.00	14.10	1.10	5.353	0.16
1295-02-08	5.30	6.30	1.00	77.810	2.27
1295-02-12	3.00	4.50	1.50	6.891	0.20
AQ-08-01	0.10	1.41	0.27	17.395	0.50
AQ-08-09	5.85	6.50	0.65	5.620	0.16
AQ-08-03	7.05	7.37	0.32	5.965	0.17
AQ-08-06	7.99	8.70	0.28	3.20000	0.42
AQ-08-07	14.31	14.95	0.64	9.265	0.27
AQ-08-09	5.85	6.50	0.65	5.620	0.16
AQ-08-10	12.77	13.24	0.47	64.100	1.87
AQ-08-12	16.49	18.37	0.35	23.304	0.68
AQ-08-13	9.60	9.90	0.30	18.275	0.47
AQ-08-14	22.40	23.31	0.57	12.288	0.36
AQ-08-14	24.51	27.08	0.33	16.935	0.49
AQ-08-20	0.40	0.62	0.22	8.800	0.26
AQ-08-24	2.58	2.83	0.25	60.600	2.64
AQ-08-25	26.01	31.52	0.41	15.611	0.46
AQ-08-27	3.00	3.92	0.35	78.227	2.28
AQ-08-36	10.70	11.25	0.55	5.045	0.15
AQ-08-39	6.24	6.54	0.30	24.500	0.71
AQ-08-52	8.08	8.78	0.70	5.550	0.16
AQ-08-53	0.00	1.17	0.31	16.484	0.48
AQ-08-55	0.00	0.80	0.43	19.308	0.56
AQ-08-60	22.91	24.01	0.55	5.928	0.17
AQ-08-63	0.65	1.38	0.39	8.613	0.26
AQ-08-63	1.91	3.84	0.75	62.647	1.83
AQ-08-64	1.13	2.05	0.31	5.185	0.15
AQ-08-64	4.26	4.66	0.30	5.260	0.15
AQ-08-67	25.93	26.93	0.56	18.021	0.53
AQ-08-68	25.81	26.23	0.42	5.710	0.17
AQ-08-68	29.62	30.38	0.38	6.382	0.19
AQ-08-69	3.38	4.87	0.38	113.687	3.30
AQ-08-70	5.39	6.88	0.77	22.791	0.66
AQ-08-72	25.60	26.79	0.45	16.415	0.48
AQ-08-75	22.28	27.48	0.25	65.600	1.94
AQ-08-75	30.20	30.45	0.25	9.360	0.27
AQ-08-77	8.67	9.35	0.68	5.470	0.16
AQ-08-79	9.57	10.65	0.37	11.471	0.33
AQ-08-81	30.75	31.25	0.50	5.190	0.15
AQ-08-85	6.08	6.36	0.30	7.670	0.22
AQ-08-88	27.71	32.55	0.52	11.162	0.33
AQ-08-91	18.68	19.04	0.38	33.200	0.97
AQ-08-92	29.45	30.26	0.41	37.844	1.10
AQ-08-92	31.28	31.74	0.23	67.367	1.87
AQ-08-94	39.34	40.81	0.40	10.915	0.32

- 2008-2010 vertical drill hole with visible gold intersect in red
- 2002 vertical drill hole with visible gold intersect in red
- ◇ 2000 inclined drill hole
- ◇ Surveyed drill hole

SIRIOS RESOURCES INC.

Date: 3/7/2011
 Prep.: R. Moar
 Rev.:
 Drawing:
 Scale: 1:225 Projection: UTM Zone 18 (NAD 83)

Aquilon Project
 Lingo Lake Area
 2010 Diamond Drilling Program
 Drill Holes Location & Assay Result



J764926	0.38	0.75
J764927	0.39	0.50
J764928	0.13	0.50
J764929	0.36	0.30

J764930	0.68	0.50
---------	------	------

J764931	0.08	0.75
J764932	0.14	0.38
J764933	0.03	0.75

J764934	0.44	0.75
J764935	0.17	0.40
J764936	0.14	0.75
J764937	0.17	0.75
J764938	0.08	0.67
J764939	0.14	0.65
J764940	0.15	0.75

DRILL CROSS SECTION - LEGEND

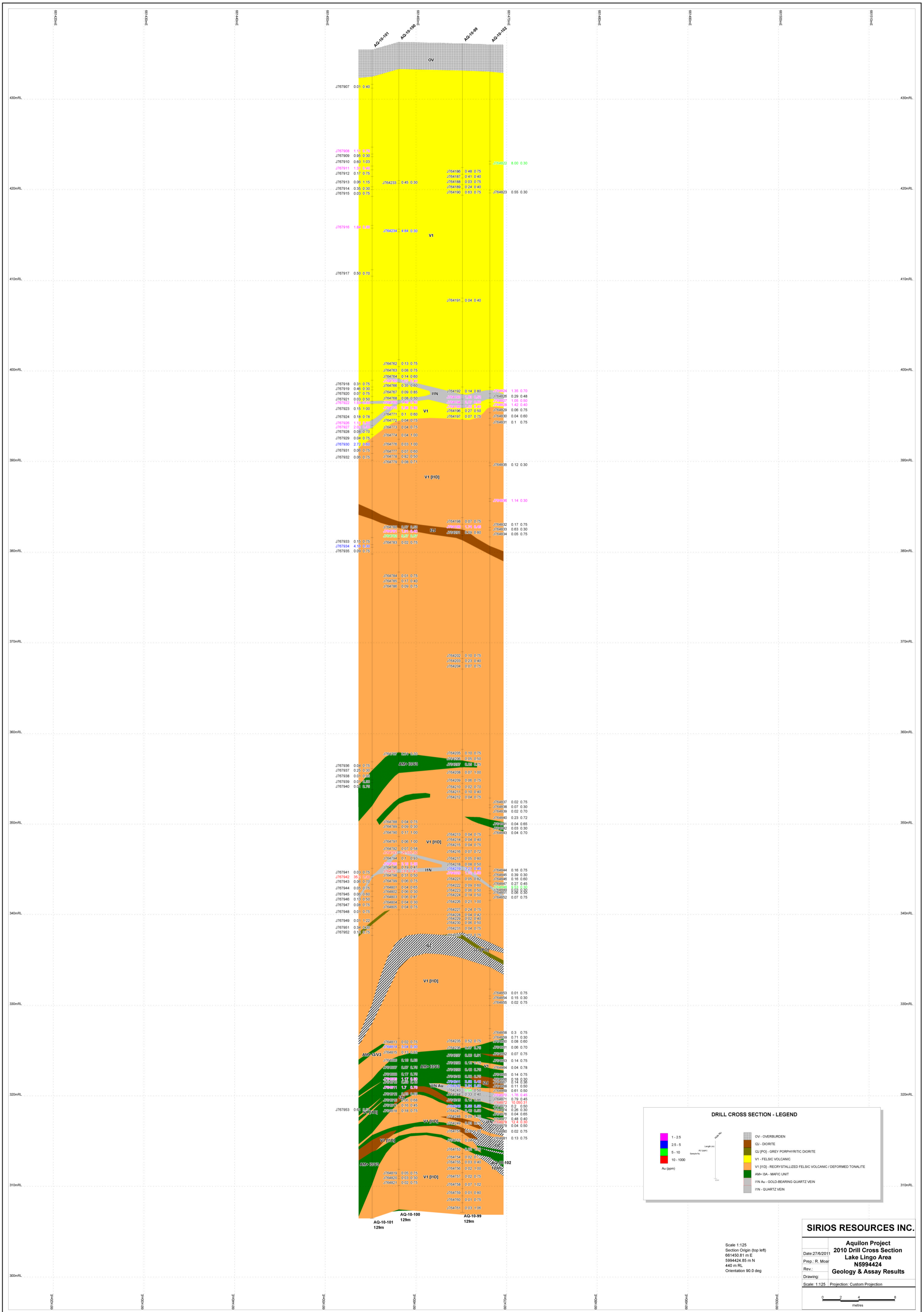
	1 - 2.5			OV - OVERBURDEN
	2.5 - 5			I2J - DIORITE
	5 - 10			I2J [PO] - GREY PORPHYRITIC DIORITE
	10 - 1000			V1 - FELSIC VOLCANIC
Au (ppm)				V1 [11D] - RECRYSTALLIZED FELSIC VOLCANIC / DEFORMED TONALITE
				AM+ 13A - MAFIC UNIT
				I1N Au - GOLD-BEARING QUARTZ VEIN
				I1N - QUARTZ VEIN

SIRIOS RESOURCES INC.

**Aquilon Project
2010 Drill Cross Section
Lake Lingo Area
N5994354
Geology & Assay Results**

Date: 27/6/2011
 Prep.: R. Moar
 Rev.:
 Drawing:
 Scale: 1:125
 Projection: Custom Projection

Scale 1:125
 Section Origin (top left)
 661369.32 m E
 5994354.38 m N
 441 m RL
 Orientation 90.0 deg

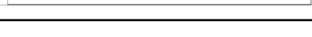


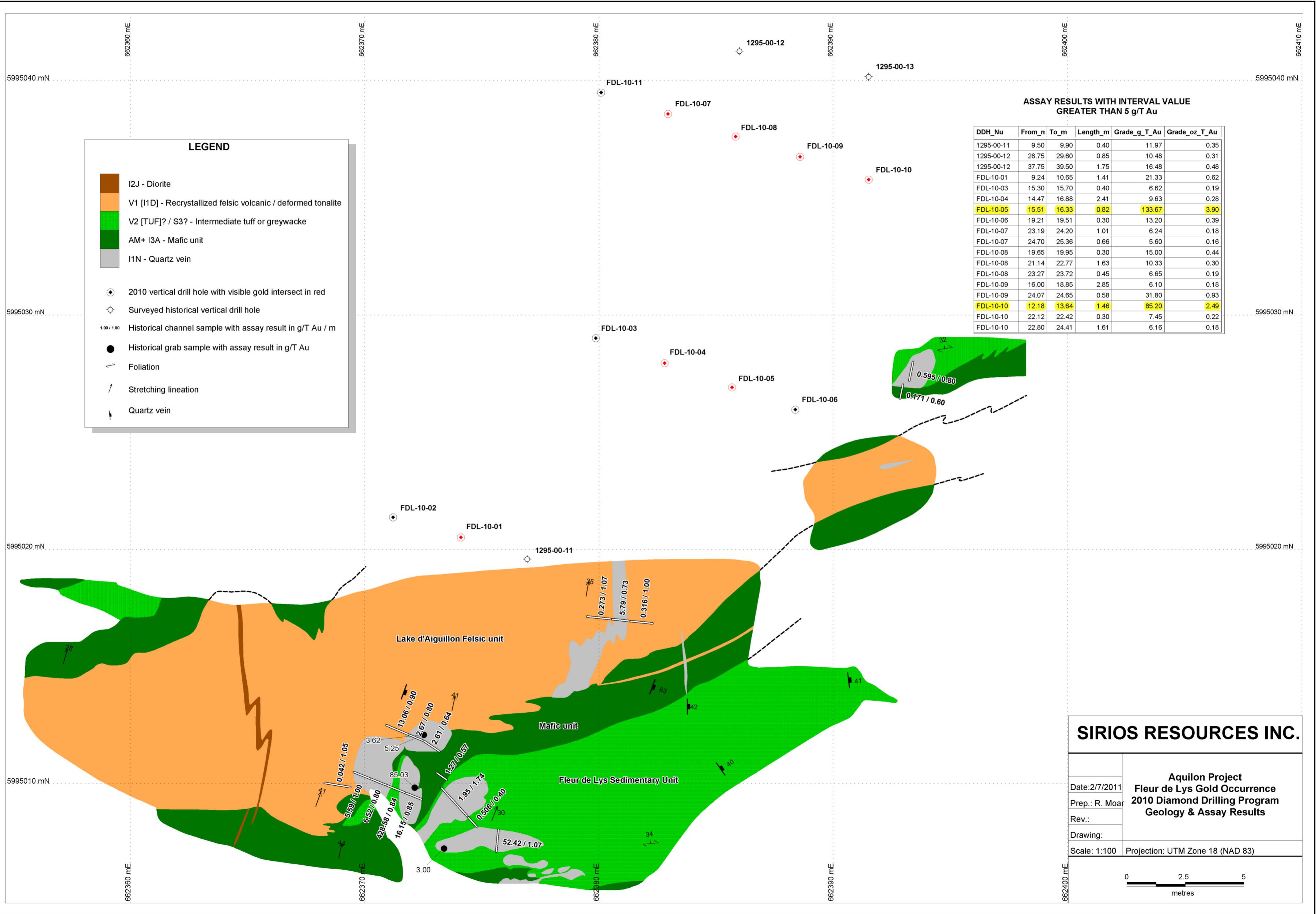
SIRIOS RESOURCES INC.

**Aquilon Project
2010 Drill Cross Section
Lake Lingo Area
N594424
Geology & Assay Results**

Date: 2/16/2011
Prep: R. Moar
Rev:
Drawing:
Scale: 1:125 Projection: Custom Projection

Scale: 1:125
Section Origin (top left):
681450.81 m E
5944424.85 m N
440 m RL
Orientation: 90.0 deg





LEGEND

- I2J - Diorite
- V1 [I1D] - Recrystallized felsic volcanic / deformed tonalite
- V2 [TUF]? / S3? - Intermediate tuff or greywacke
- AM+ I3A - Mafic unit
- I1N - Quartz vein
- 2010 vertical drill hole with visible gold intersect in red
- Surveyed historical vertical drill hole
- Historical channel sample with assay result in g/T Au / m
- Historical grab sample with assay result in g/T Au
- Foliation
- Stretching lineation
- Quartz vein

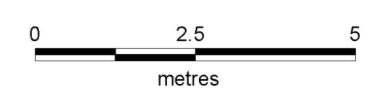
**ASSAY RESULTS WITH INTERVAL VALUE
GREATER THAN 5 g/T Au**

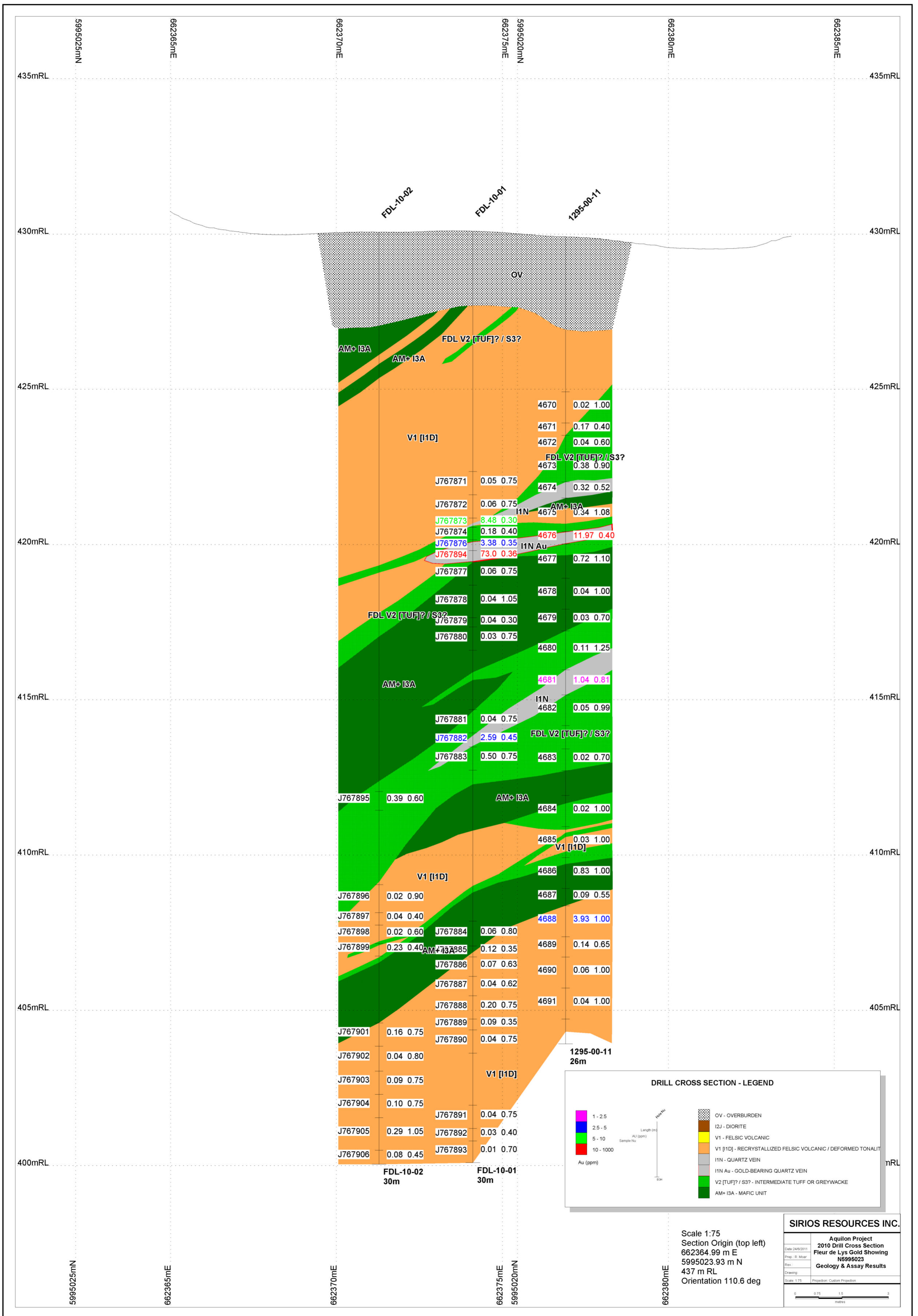
DDH_Nu	From_m	To_m	Length_m	Grade_g_T_Au	Grade_oz_T_Au
1295-00-11	9.50	9.90	0.40	11.97	0.35
1295-00-12	28.75	29.60	0.85	10.48	0.31
1295-00-12	37.75	39.50	1.75	16.48	0.48
FDL-10-01	9.24	10.65	1.41	21.33	0.62
FDL-10-03	15.30	15.70	0.40	6.62	0.19
FDL-10-04	14.47	16.88	2.41	9.63	0.28
FDL-10-05	15.51	16.33	0.82	133.67	3.90
FDL-10-06	19.21	19.51	0.30	13.20	0.39
FDL-10-07	23.19	24.20	1.01	6.24	0.18
FDL-10-07	24.70	25.36	0.66	5.60	0.16
FDL-10-08	19.65	19.95	0.30	15.00	0.44
FDL-10-08	21.14	22.77	1.63	10.33	0.30
FDL-10-08	23.27	23.72	0.45	6.65	0.19
FDL-10-09	16.00	18.85	2.85	6.10	0.18
FDL-10-09	24.07	24.65	0.58	31.80	0.93
FDL-10-10	12.18	13.64	1.46	85.20	2.49
FDL-10-10	22.12	22.42	0.30	7.45	0.22
FDL-10-10	22.80	24.41	1.61	6.16	0.18

SIRIOS RESOURCES INC.

**Aquilon Project
Fleur de Lys Gold Occurrence
2010 Diamond Drilling Program
Geology & Assay Results**

Date: 2/7/2011
 Prep.: R. Moar
 Rev.:
 Drawing:
 Scale: 1:100 Projection: UTM Zone 18 (NAD 83)





Sample No.	Length (m)	Au (ppm)	Other Elements
4670	0.02	1.00	
4671	0.17	0.40	
4672	0.04	0.60	
4673	0.38	0.90	
4674	0.32	0.52	
4675	0.34	1.08	
4676	11.97	0.40	
4677	0.72	1.10	
4678	0.04	1.00	
4679	0.03	0.70	
4680	0.11	1.25	
4681	1.04	0.81	
4682	0.05	0.99	
4683	0.02	0.70	
4684	0.02	1.00	
4685	0.03	1.00	
4686	0.83	1.00	
4687	0.09	0.55	
4688	3.93	1.00	
4689	0.14	0.65	
4690	0.06	1.00	
4691	0.04	1.00	
J767871	0.05	0.75	
J767872	0.06	0.75	
J767873	8.48	0.30	
J767874	0.18	0.40	
J767876	3.38	0.35	
J767894	73.0	0.36	
J767877	0.06	0.75	
J767878	0.04	1.05	
J767879	0.04	0.30	
J767880	0.03	0.75	
J767881	0.04	0.75	
J767882	2.59	0.45	
J767883	0.50	0.75	
J767895	0.39	0.60	
J767884	0.06	0.80	
J767885	0.12	0.35	
J767886	0.07	0.63	
J767887	0.04	0.62	
J767888	0.20	0.75	
J767889	0.09	0.35	
J767890	0.04	0.75	
J767901	0.16	0.75	
J767902	0.04	0.80	
J767903	0.09	0.75	
J767904	0.10	0.75	
J767905	0.29	1.05	
J767906	0.08	0.45	

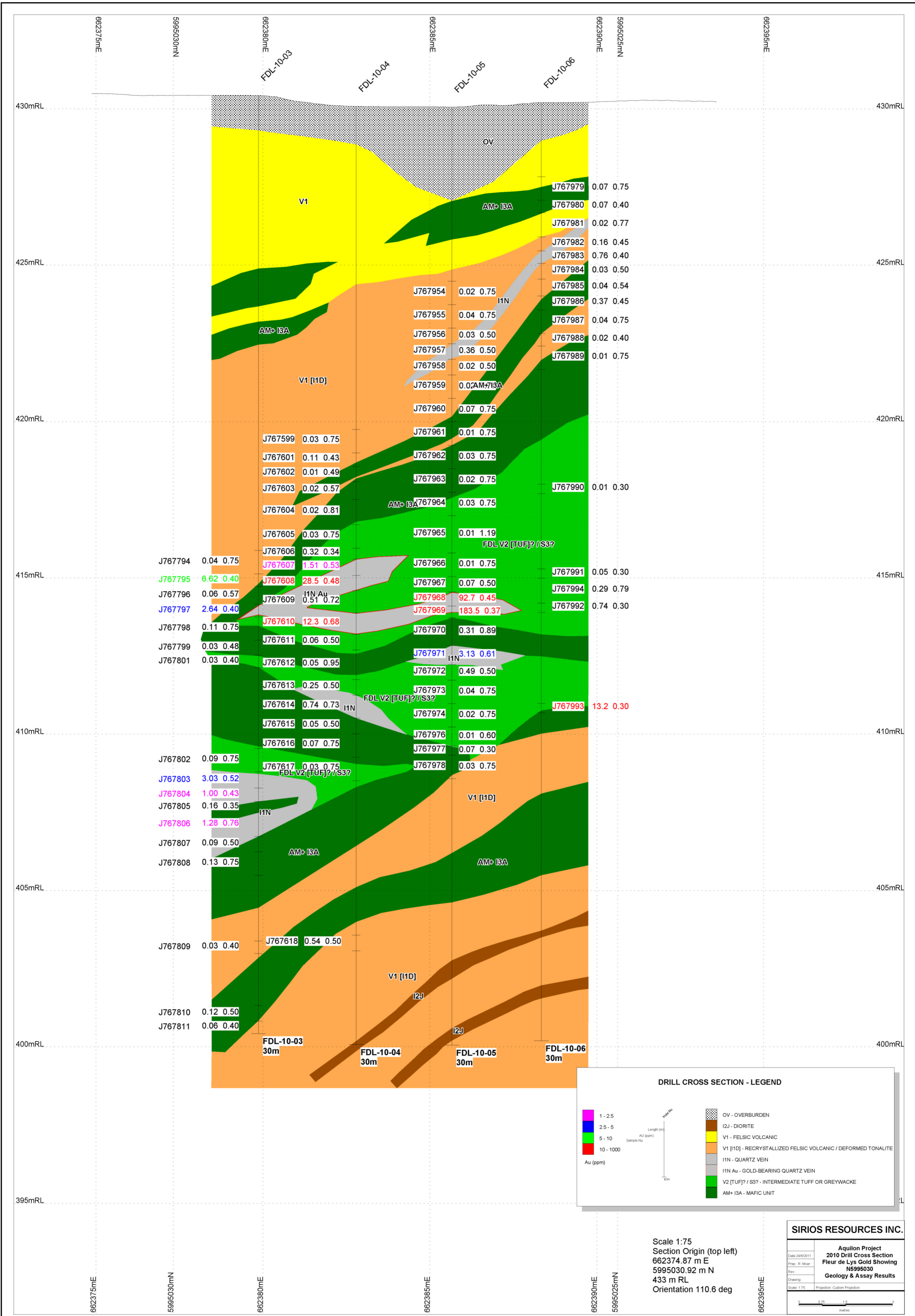
DRILL CROSS SECTION - LEGEND

	Length (m) Au (ppm) Sample No.	
--	--------------------------------------	--

Scale 1:75
 Section Origin (top left)
 662364.99 m E
 5995023.93 m N
 437 m RL
 Orientation 110.6 deg

SIRIOS RESOURCES INC.

Aquilon Project	
2010 Drill Cross Section	
Fleur de Lys Gold Showing	
N5995023	
Geology & Assay Results	
Date: 24/9/2011	Prep: R. Moor
Rev:	
Drawing:	
Scale: 1:75	Projection: Custom Projection



J767794	0.04	0.75
J767795	6.62	0.40
J767796	0.06	0.57
J767797	2.64	0.40
J767798	0.11	0.75
J767799	0.03	0.48
J767801	0.03	0.40
J767802	0.09	0.75
J767803	3.03	0.52
J767804	1.00	0.43
J767805	0.16	0.35
J767806	1.28	0.76
J767807	0.09	0.50
J767808	0.13	0.75
J767809	0.03	0.40
J767810	0.12	0.50
J767811	0.06	0.40

J767979	0.07	0.75
J767980	0.07	0.40
J767981	0.02	0.77
J767982	0.16	0.45
J767983	0.76	0.40
J767984	0.03	0.50
J767985	0.04	0.54
J767986	0.37	0.45
J767987	0.04	0.75
J767988	0.02	0.40
J767989	0.01	0.75
J767954	0.02	0.75
J767955	0.04	0.75
J767956	0.03	0.50
J767957	0.36	0.50
J767958	0.02	0.50
J767959	0.02	0.75
J767960	0.07	0.75
J767961	0.01	0.75
J767962	0.03	0.75
J767963	0.02	0.75
J767964	0.03	0.75
J767965	0.01	1.19
J767966	0.01	0.75
J767967	0.07	0.50
J767968	92.7	0.45
J767969	183.5	0.37
J767970	0.31	0.89
J767971	3.13	0.61
J767972	0.49	0.50
J767973	0.04	0.75
J767974	0.02	0.75
J767976	0.01	0.60
J767977	0.07	0.30
J767978	0.03	0.75

DRILL CROSS SECTION - LEGEND

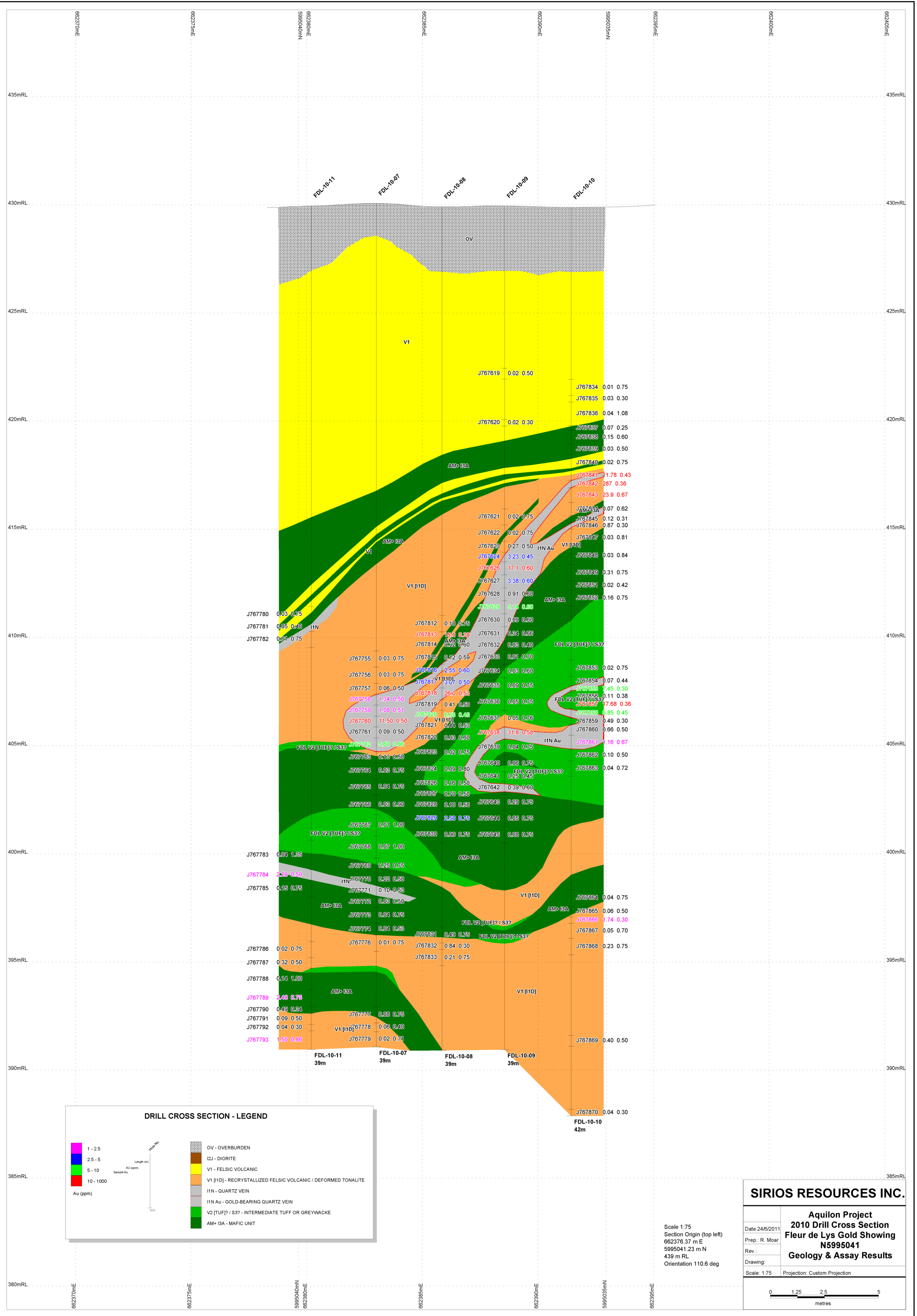
	Au (ppm)		<ul style="list-style-type: none"> OV - OVERBURDEN I2J - DIORITE V1 - FELSIC VOLCANIC V1 [1D] - RECRYSTALLIZED FELSIC VOLCANIC / DEFORMED TONALITE I1N - QUARTZ VEIN I1N Au - GOLD-BEARING QUARTZ VEIN V2 [TUF] / S3? - INTERMEDIATE TUFF OR GREYWACKE AM+ I3A - MAFIC UNIT
--	----------	--	---

Scale 1:75
 Section Origin (top left)
 662374.87 m E
 5995030.92 m N
 433 m RL
 Orientation 110.6 deg

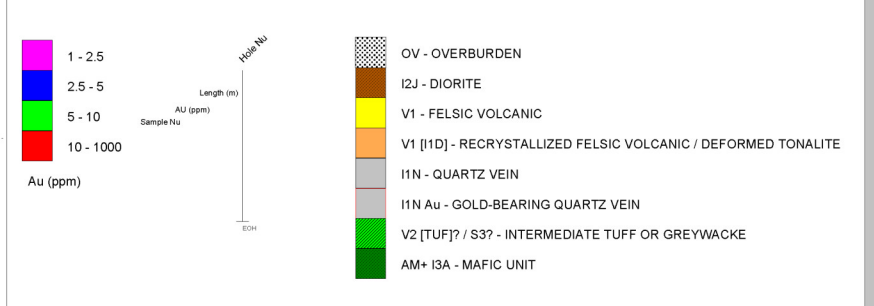
SIRIOS RESOURCES INC.

Aquilon Project
 2010 Drill Cross Section
 Fleur de Lys Gold Showing
 N5995030
 Geology & Assay Results

Date: 24/09/2011
 Prep: R. Moqr
 Rev:
 Drawing:
 Scale: 1:75
 Projection: Custom Projection



DRILL CROSS SECTION - LEGEND

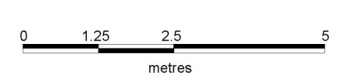


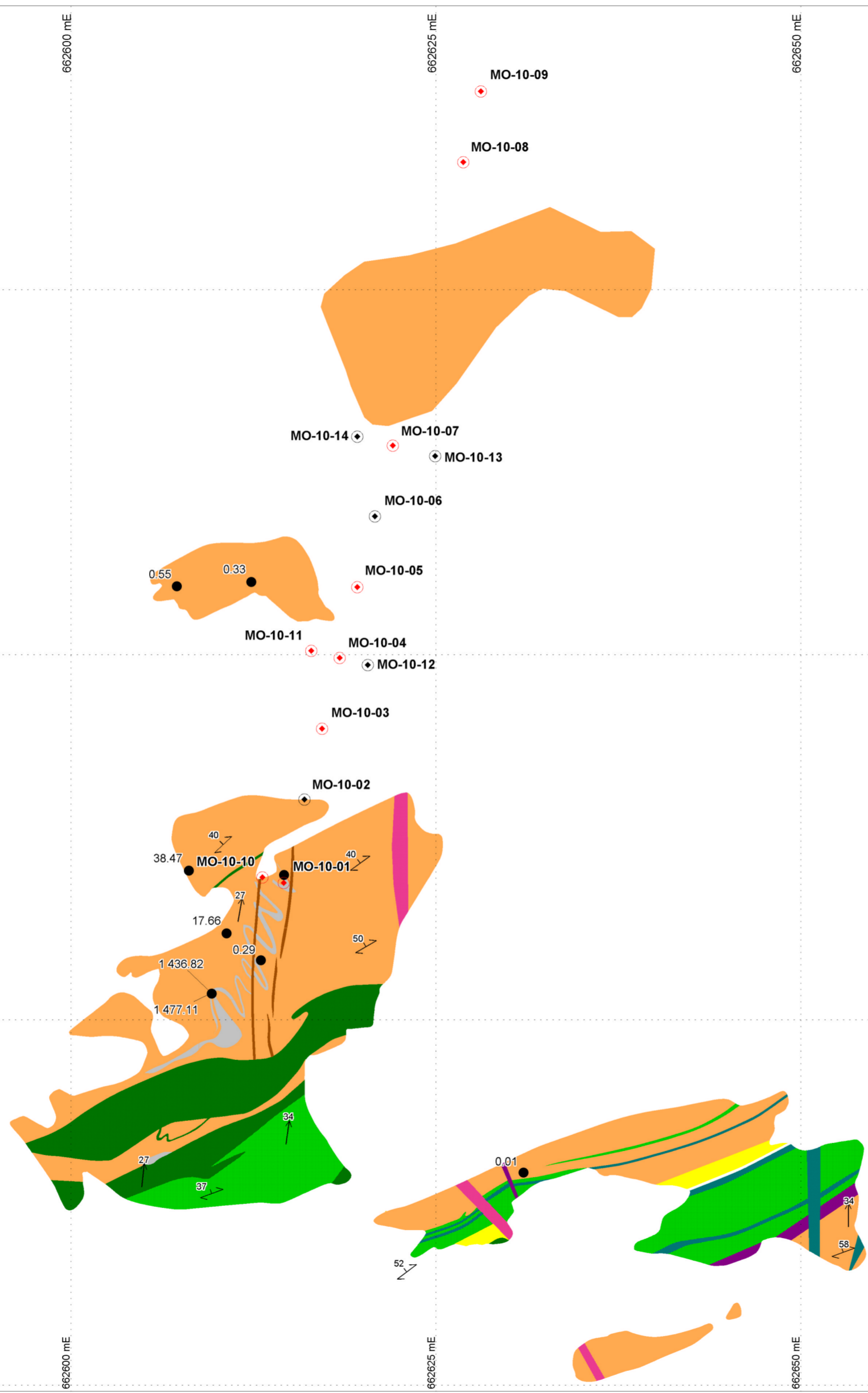
SIRIOS RESOURCES INC.

**Aquilon Project
2010 Drill Cross Section
Fleur de Lys Gold Showing
N5995041
Geology & Assay Results**

Date: 24/6/2011
Prep.: R. Moar
Rev.:
Drawing:
Scale: 1:75
Projection: Custom Projection

Scale: 1:75
Section Origin (top left)
662376.37 m E
5995041.23 m N
439 m RL
Orientation 110.6 deg





**ASSAY RESULTS WITH INTERVAL VALUE
GREATER THAN 5 g/T Au**

Hole_Nu	From_m	To_m	Length_m	Grade_g_T_Au	Grade_oz_T_Au
MO-10-01	3.80	4.72	0.92	11.19	0.33
MO-10-01	5.46	6.00	0.54	32.50	0.95
MO-10-01	6.52	8.23	1.71	834.45	24.34
MO-10-03	10.29	11.23	0.94	6.06	0.18
MO-10-03	12.20	13.64	1.44	6.72	0.20
MO-10-04	12.35	14.60	2.25	116.48	3.40
MO-10-04	16.00	17.46	1.46	18.21	0.53
MO-10-05	14.45	15.45	1.00	8.92	0.26
MO-10-05	15.85	16.35	0.50	8.24	0.24
MO-10-05	17.06	19.62	2.56	7.89	0.23
MO-10-07	20.60	21.80	1.20	25.16	0.73
MO-10-07	23.54	24.11	0.57	5.99	0.17
MO-10-07	26.46	27.89	1.43	8.43	0.25
MO-10-08	32.36	36.95	4.59	8.40	0.25
MO-10-08	38.30	39.05	0.75	10.55	0.31
MO-10-09	37.85	39.31	1.46	23.87	0.70
MO-10-09	42.68	43.28	0.60	425.34	12.41
MO-10-10	3.31	4.51	1.20	15.64	0.46
MO-10-11	19.12	19.74	0.62	11.20	0.33

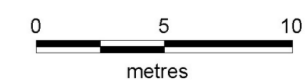
LEGEND

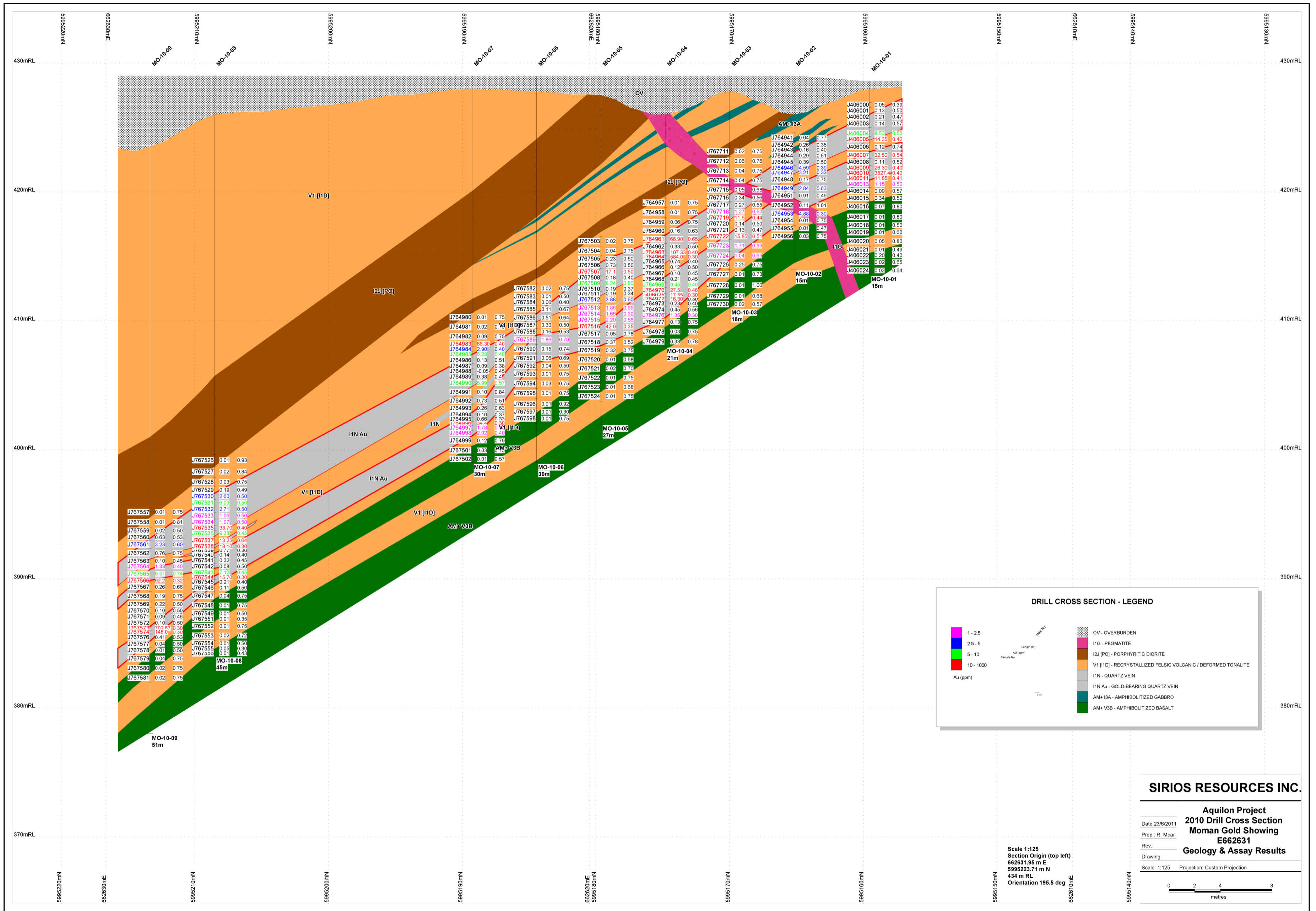
- I1G - Pegmatite
- I2J - Diorite
- I30 - Biotitized lamprophyritic dyke
- V1 - Felsic volcanic
- V1 [I1D] - Recrystallized felsic volcanic / deformed tonalite
- V2 [TUF]? / S3? - Intermediate tuff or greywacke
- I3A - Gabbro
- V3B - Basalt
- I1N - Quartz vein
- 2010 vertical drill hole with visible gold intersect in red
- Historical grab sample with assay result in g/T Au
- Foliation
- Stretching lineation
- Quartz vein

SIRIOS RESOURCES INC.

**Aquilon Project
Môman Gold Occurrence
2010 Diamond Drilling Program
Geology & Assay Results**

Date: 3/7/2011
 Author:
 Rev.:
 Drawing:
 Scale: 1:250 Projection: UTM Zone 18 (NAD 83)





DRILL CROSS SECTION - LEGEND

1 - 2.5	OV - OVERBURDEN
2.5 - 5	I1G - PEGMATITE
5 - 10	I2J [PO] - PORPHYRITIC DIORITE
10 - 1000	V1 [1D] - RECRYSTALLIZED FELSIC VOLCANIC / DEFORMED TONALITE
	I1N - QUARTZ VEIN
	I1N Au - GOLD-BEARING QUARTZ VEIN
	AM+ I3A - AMPHIBOLITIZED GABBRO
	AM+ V3B - AMPHIBOLITIZED BASALT

Au (ppm) scale: 0, 2, 4, 8 metres
 Length (m) scale: 0, 10, 20, 30, 40, 50, 60, 70, 80, 90, 100
 Sample No.

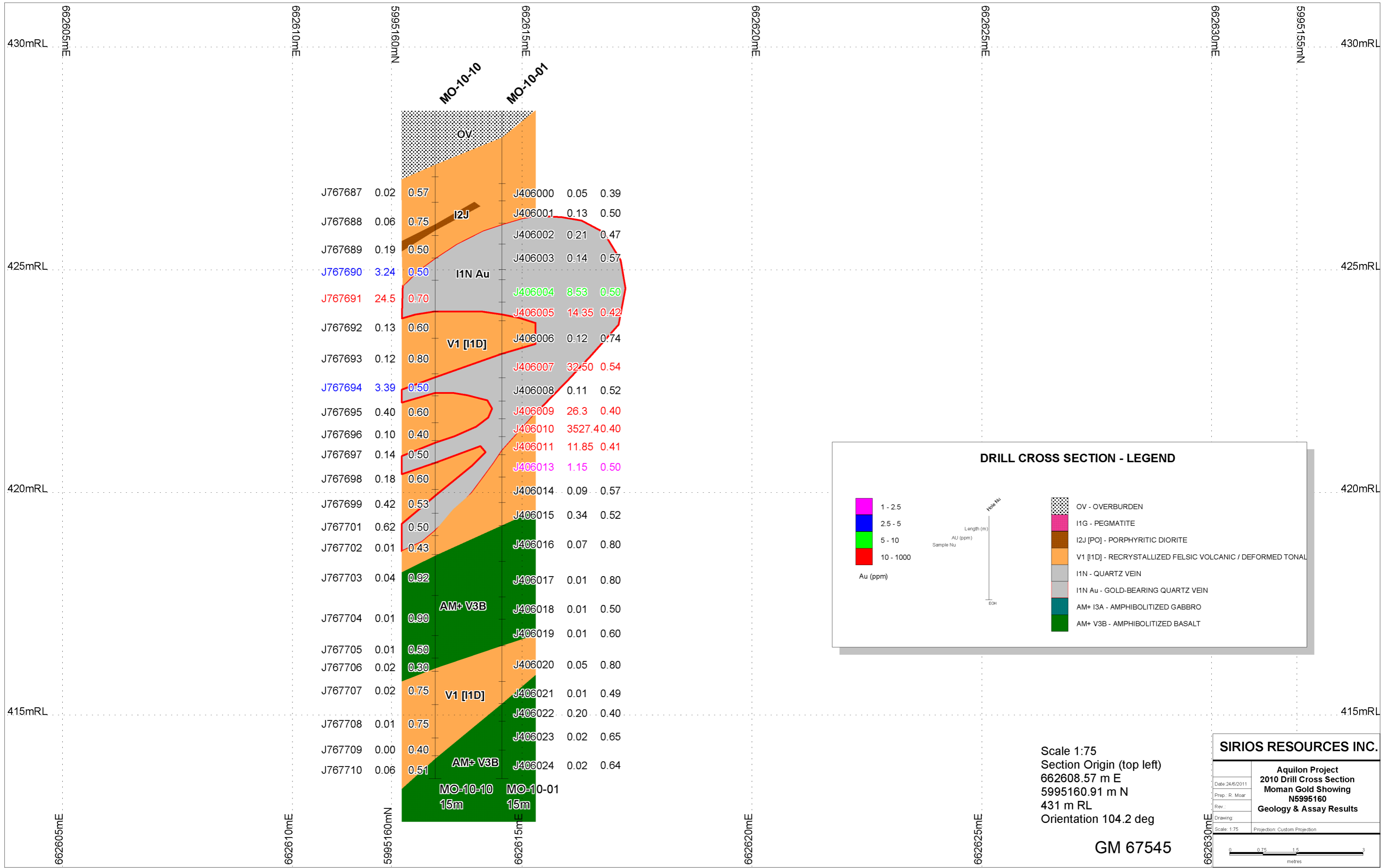
SIRIOS RESOURCES INC.

**Aquilon Project
2010 Drill Cross Section
Moman Gold Showing
E662631
Geology & Assay Results**

Date: 23/6/2011
 Prep.: R. Moar
 Rev.:
 Drawing:
 Scale: 1:125
 Projection: Custom Projection

Scale 1:125
 Section Origin (top left)
 662631.95 m E
 5995223.71 m N
 434 m RL
 Orientation 195.5 deg

0 2 4 8 metres



DRILL CROSS SECTION - LEGEND

Au (ppm)

- 1 - 2.5
- 2.5 - 5
- 5 - 10
- 10 - 1000

Geological Units

- OV - OVERBURDEN
- I1G - PEGMATITE
- I2J [PO] - PORPHYRITIC DIORITE
- V1 [I1D] - RECRYSTALLIZED FELSIC VOLCANIC / DEFORMED TONALITE
- I1N - QUARTZ VEIN
- I1N Au - GOLD-BEARING QUARTZ VEIN
- AM+ I3A - AMPHIBOLITIZED GABBRO
- AM+ V3B - AMPHIBOLITIZED BASALT

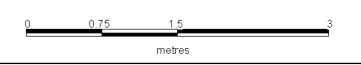
Scale 1:75
 Section Origin (top left)
 662608.57 m E
 5995160.91 m N
 431 m RL
 Orientation 104.2 deg

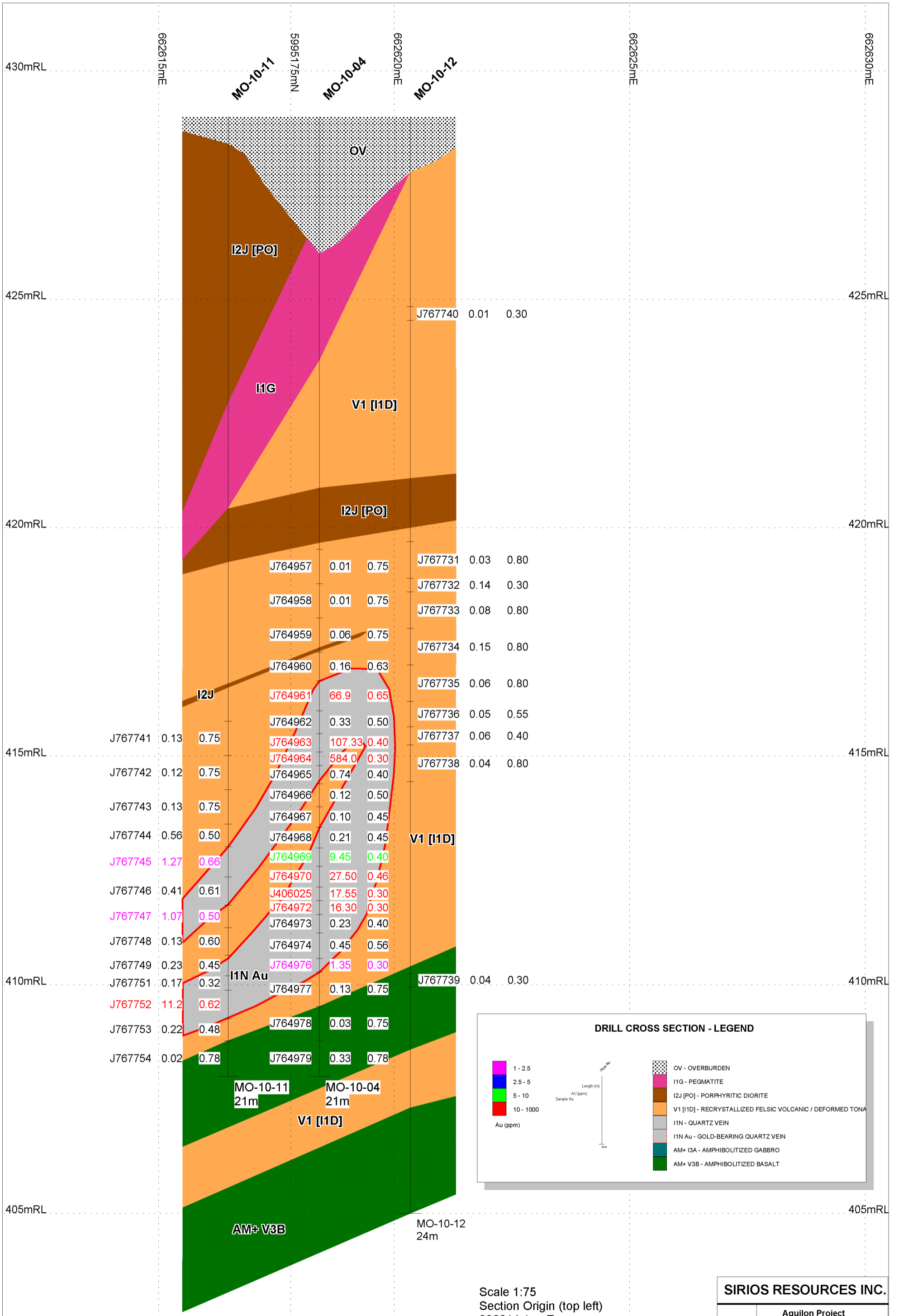
GM 67545

SIRIOS RESOURCES INC.

	Aquila Project
	2010 Drill Cross Section
	Moman Gold Showing
	N5995160
	Geology & Assay Results

Date: 24/6/2011
 Prep: R. Moar
 Rev:
 Drawing:
 Scale: 1:75
 Projection: Custom Projection





Sample No	Length (m)	Au (ppm)	Sample No	Length (m)	Au (ppm)
J767740	0.01	0.30	J767731	0.03	0.80
J764957	0.01	0.75	J767732	0.14	0.30
J764958	0.01	0.75	J767733	0.08	0.80
J764959	0.06	0.75	J767734	0.15	0.80
J764960	0.16	0.63	J767735	0.06	0.80
J764961	66.9	0.65	J767736	0.05	0.55
J764962	0.33	0.50	J767737	0.06	0.40
J764963	107.33	0.40	J767738	0.04	0.80
J764964	584.0	0.30			
J764965	0.74	0.40			
J764966	0.12	0.50			
J764967	0.10	0.45			
J764968	0.21	0.45			
J764969	9.45	0.40			
J764970	27.50	0.46			
J406025	17.55	0.30			
J764972	16.30	0.30			
J764973	0.23	0.40			
J764974	0.45	0.56			
J764976	1.35	0.30			
J764977	0.13	0.75			
J764978	0.03	0.75			
J764979	0.33	0.78			

DRILL CROSS SECTION - LEGEND

	Au (ppm)		<ul style="list-style-type: none"> OV - OVERBURDEN I1G - PEGMATITE I2J [PO] - PORPHYRITIC DIORITE V1 [I1D] - RECRYSTALLIZED FELSIC VOLCANIC / DEFORMED TONALITE I1N - QUARTZ VEIN I1N Au - GOLD-BEARING QUARTZ VEIN AM+ I3A - AMPHIBOLITIZED GABBRO AM+ V3B - AMPHIBOLITIZED BASALT
--	----------	--	---

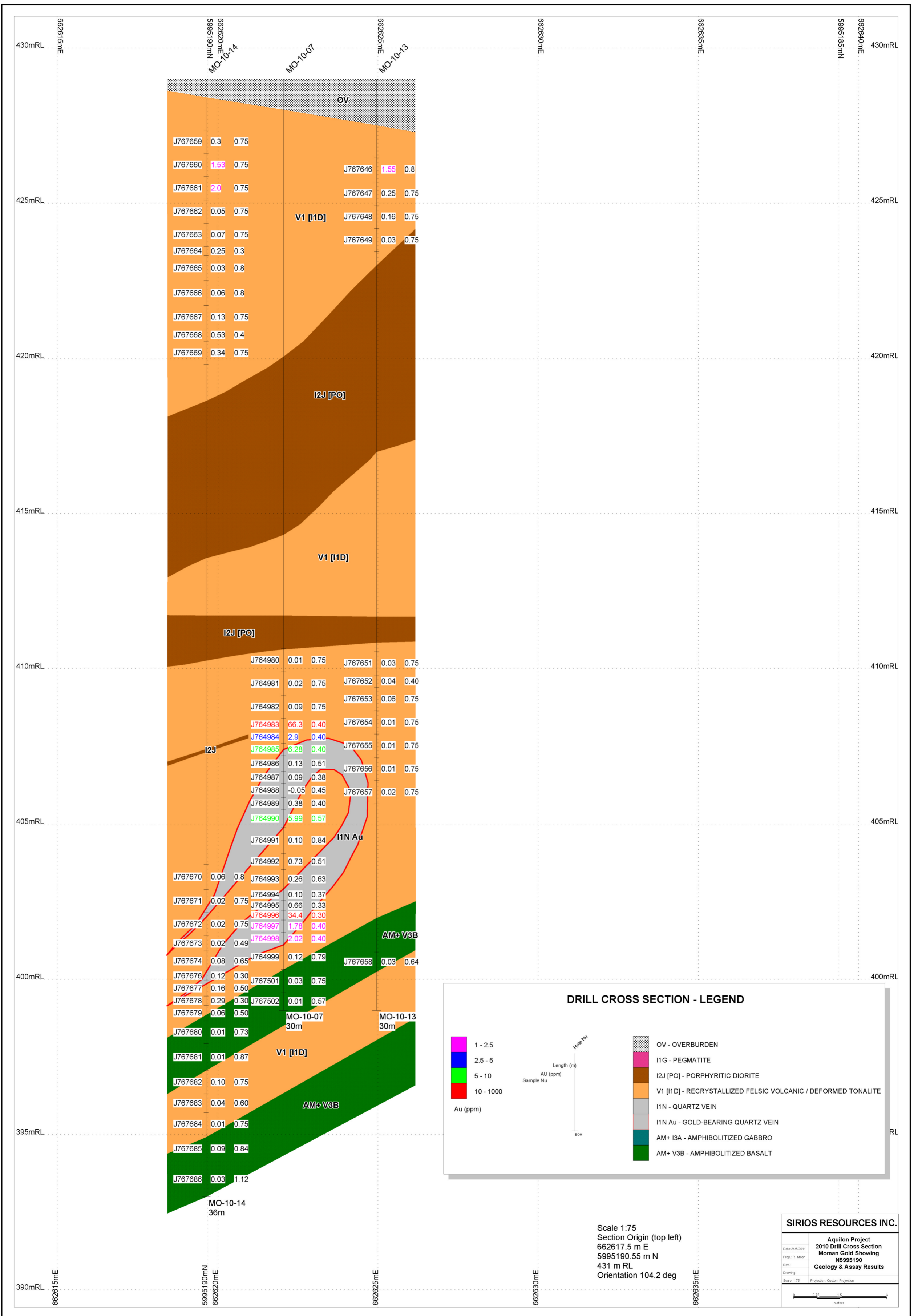
Scale 1:75
 Section Origin (top left)
 662614.1 m E
 5995175.94 m N
 431.5 m RL
 Orientation 104.2 deg

SIRIOS RESOURCES INC.

Aquilon Project
2010 Drill Cross Section
Moman Gold Showing
N5995175
Geology & Assay Results

Date: 24/6/2011
 Prep.: R. Moar
 Rev.:
 Drawing:
 Scale: 1:75
 Projection: Custom Projection

GM 67545



Scale 1:75
 Section Origin (top left)
 662617.5 m E
 5995190.55 m N
 431 m RL
 Orientation 104.2 deg

SIRIOS RESOURCES INC.

Aquila Project
 2010 Drill Cross Section
 Moman Gold Showing
 N5995190
 Geology & Assay Results

Date: 24/6/2011
 Prep: R. Moar
 Rev:
 Drawing:
 Scale: 1:75 Projection: Custom Projection