

Figure 4.2 – Claims map of the Bourrier property and claims subject to an NSR



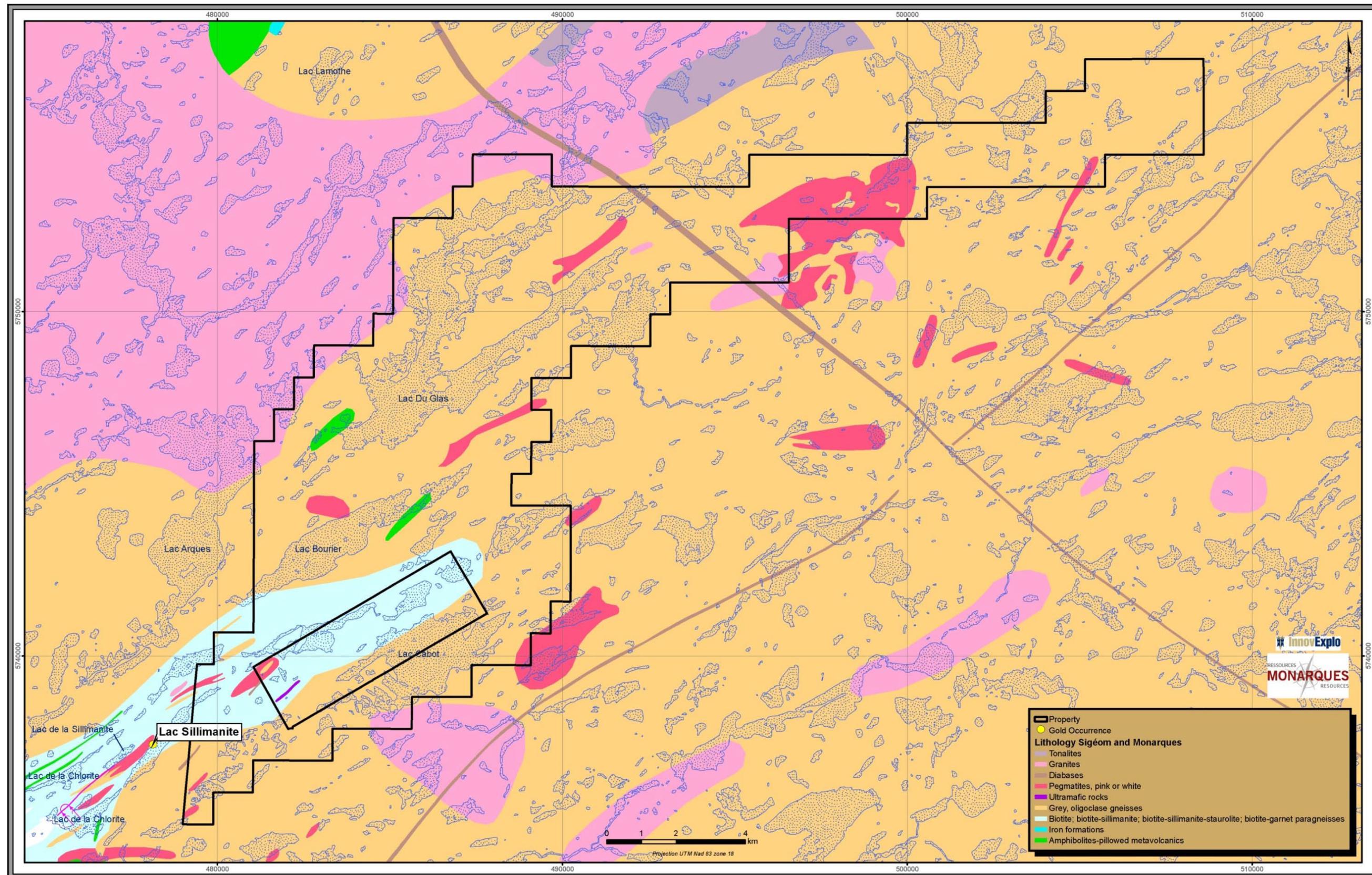


Figure 7.2 – Local geological setting of the Bourier property (Valiquette, 1975)



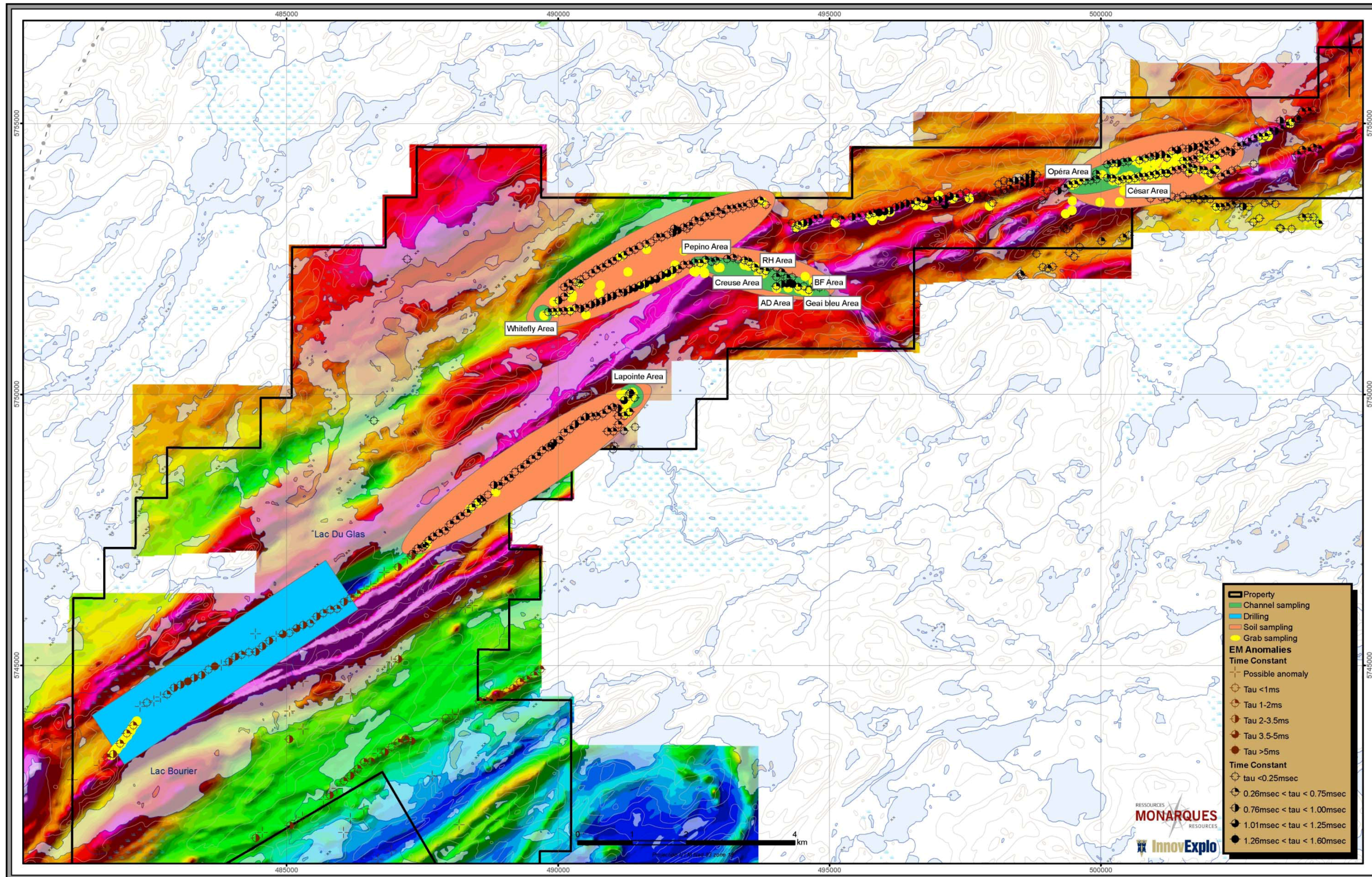


Figure 9.1 – Summary map of the work carried out on the Bourier property



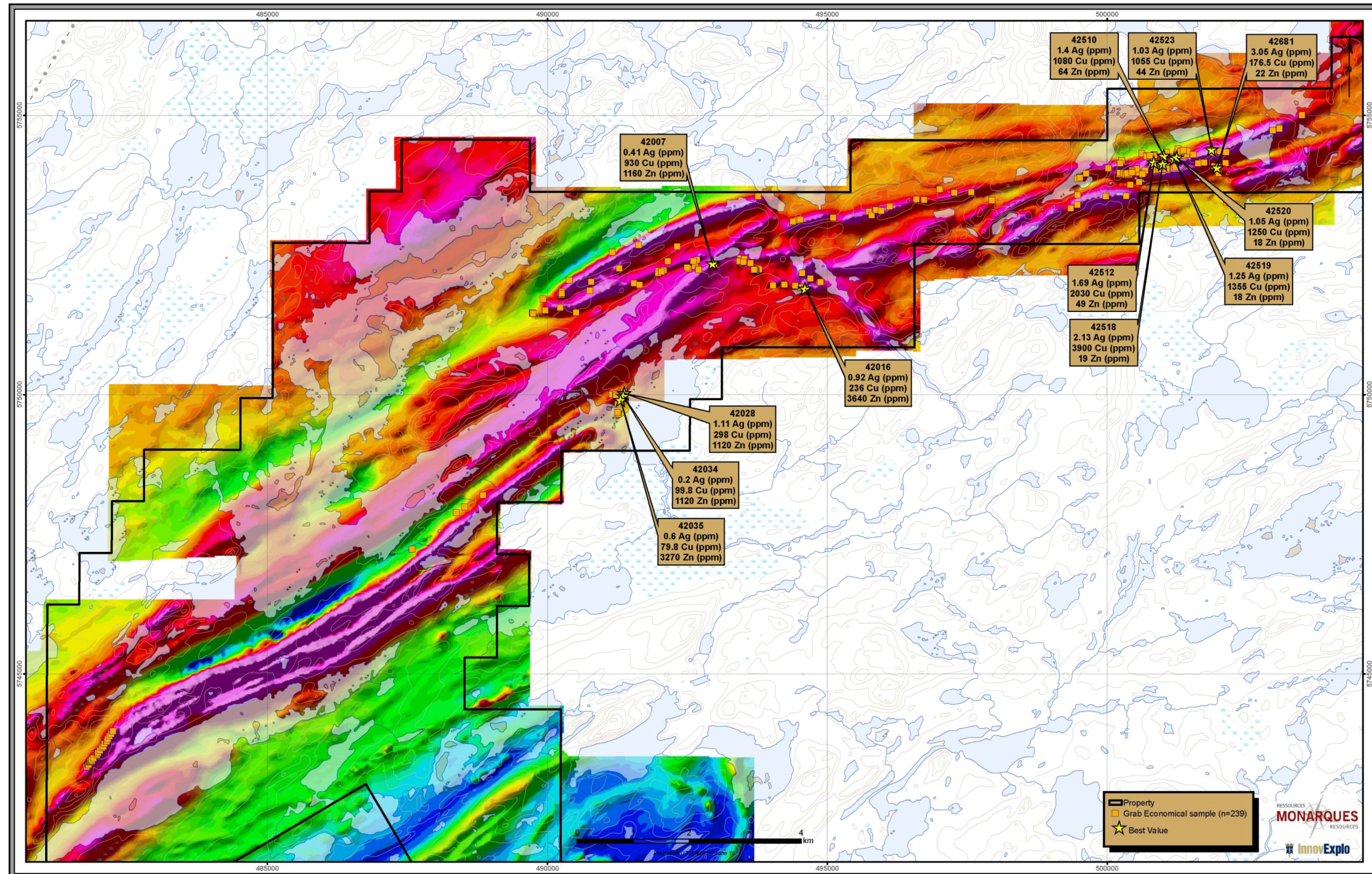


Figure 9.2 – Location of grab samples on the Bourier property with the highest values for Zn, Cu and associated Ag



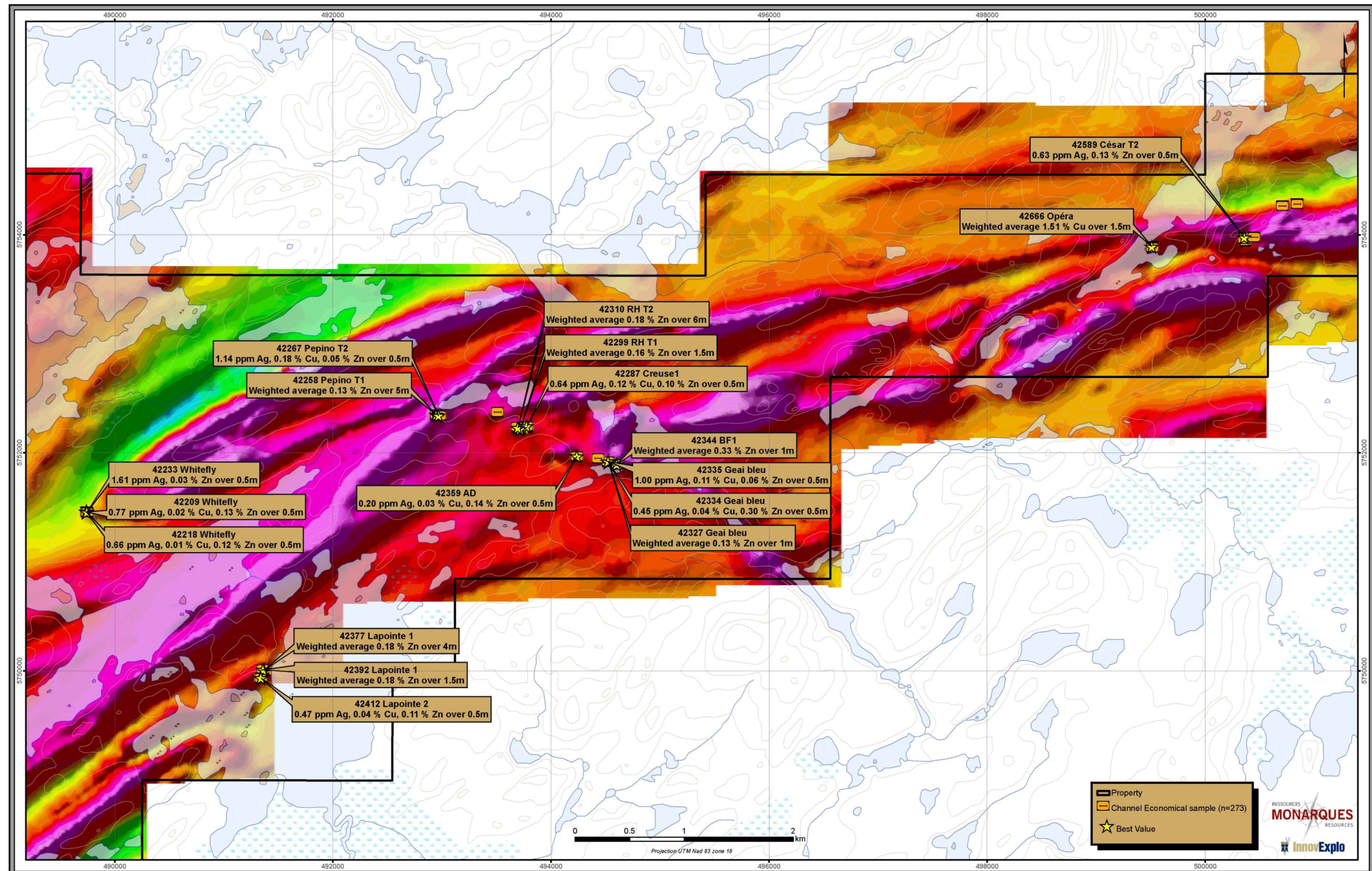


Figure 9.3 – Location of channel samples and best results on the Bourrier property



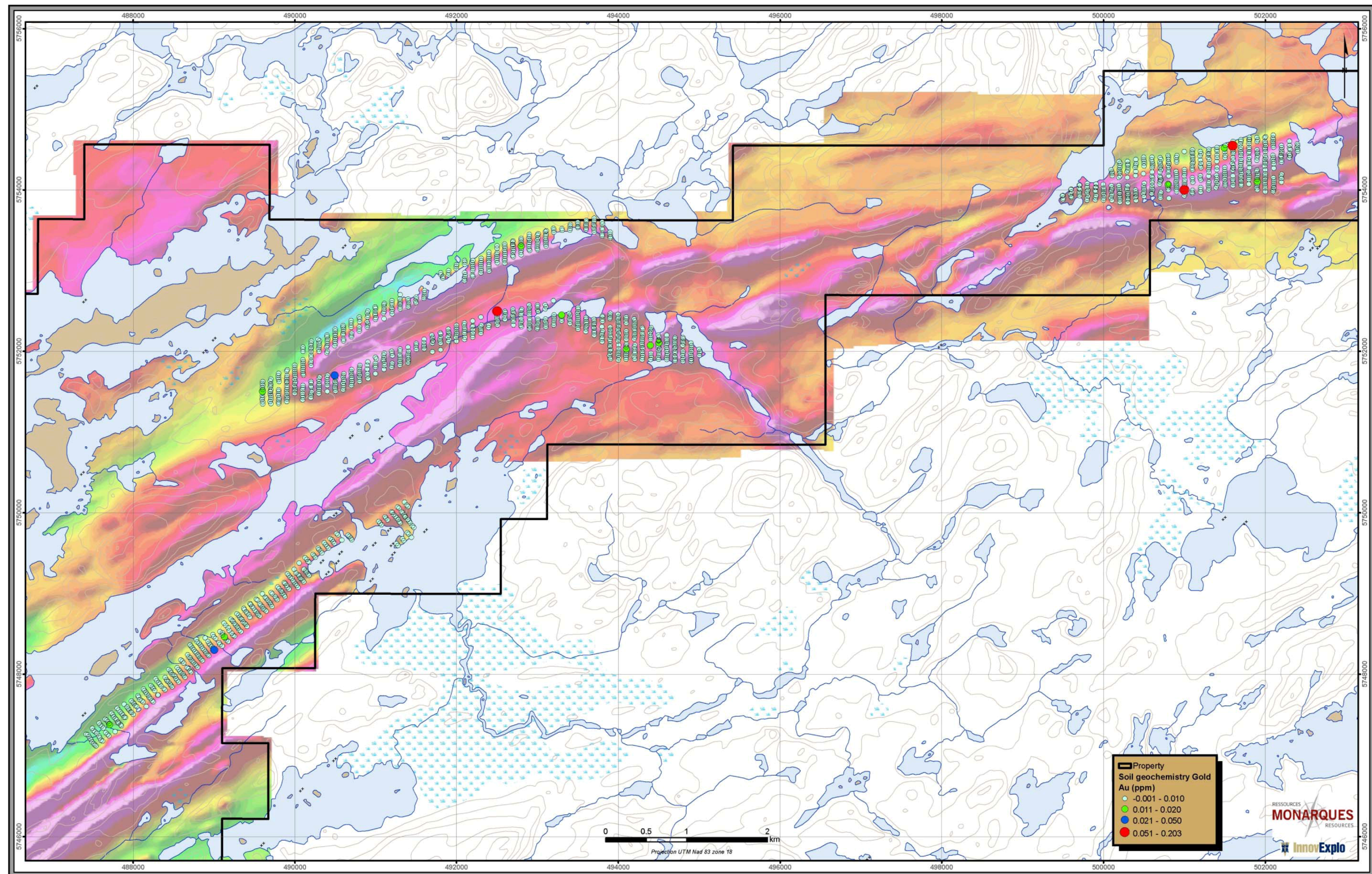


Figure 9.4 – Location of Au soil samples on the Bourier property



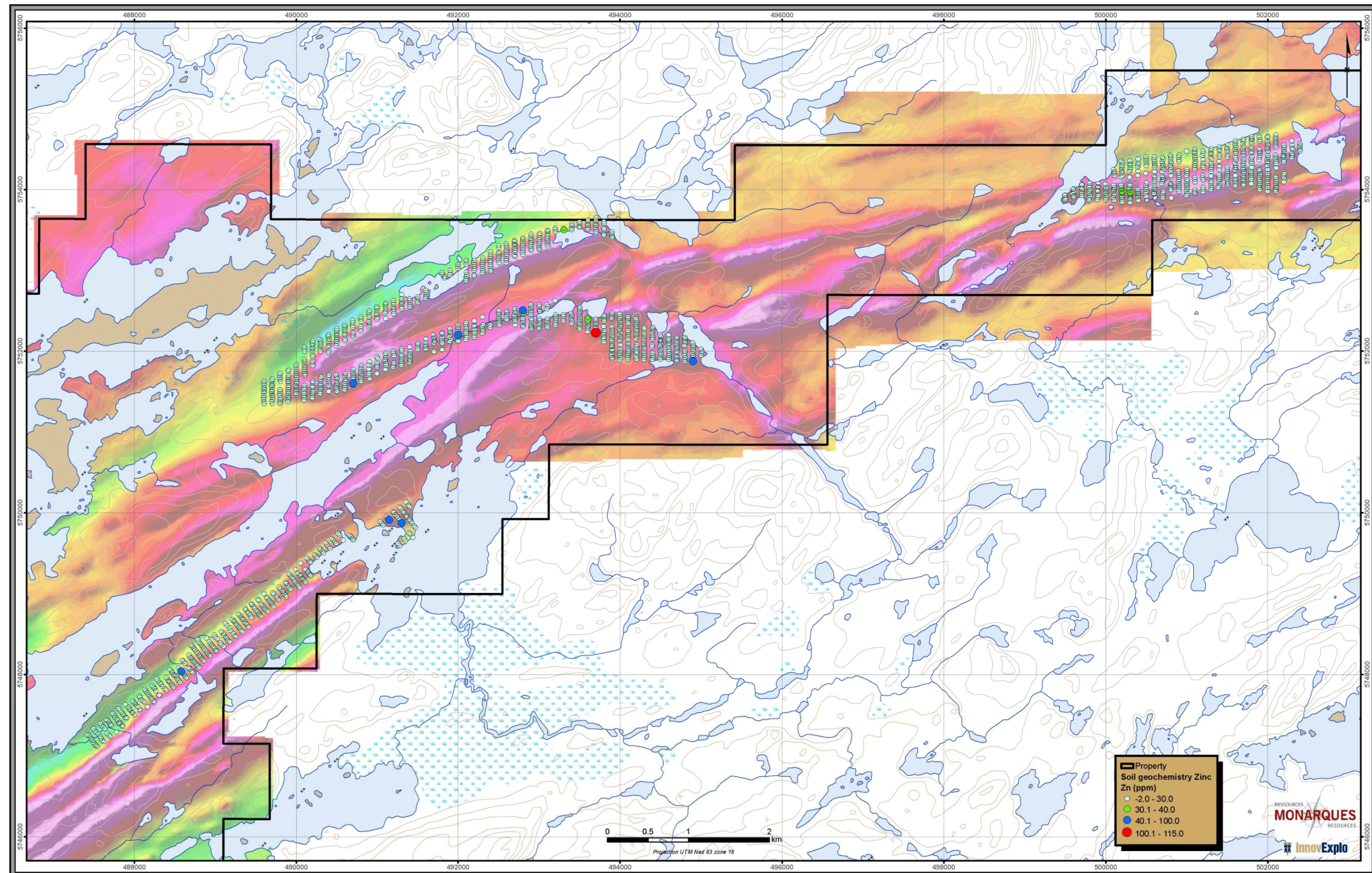


Figure 9.5 – Location of Zn soil samples on the Bourier property



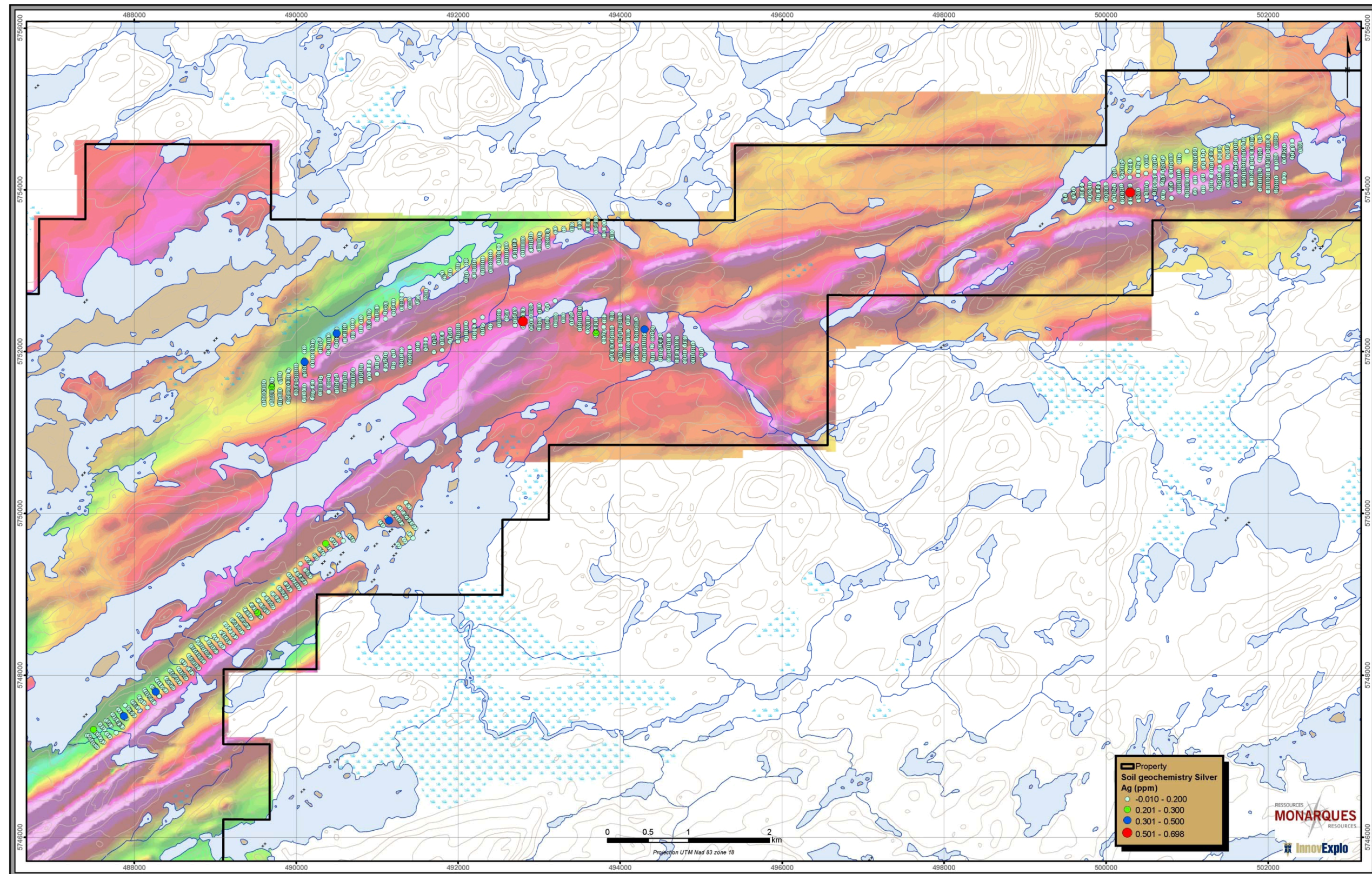


Figure 9.6 – Location of Ag soil samples on the Bourrier property



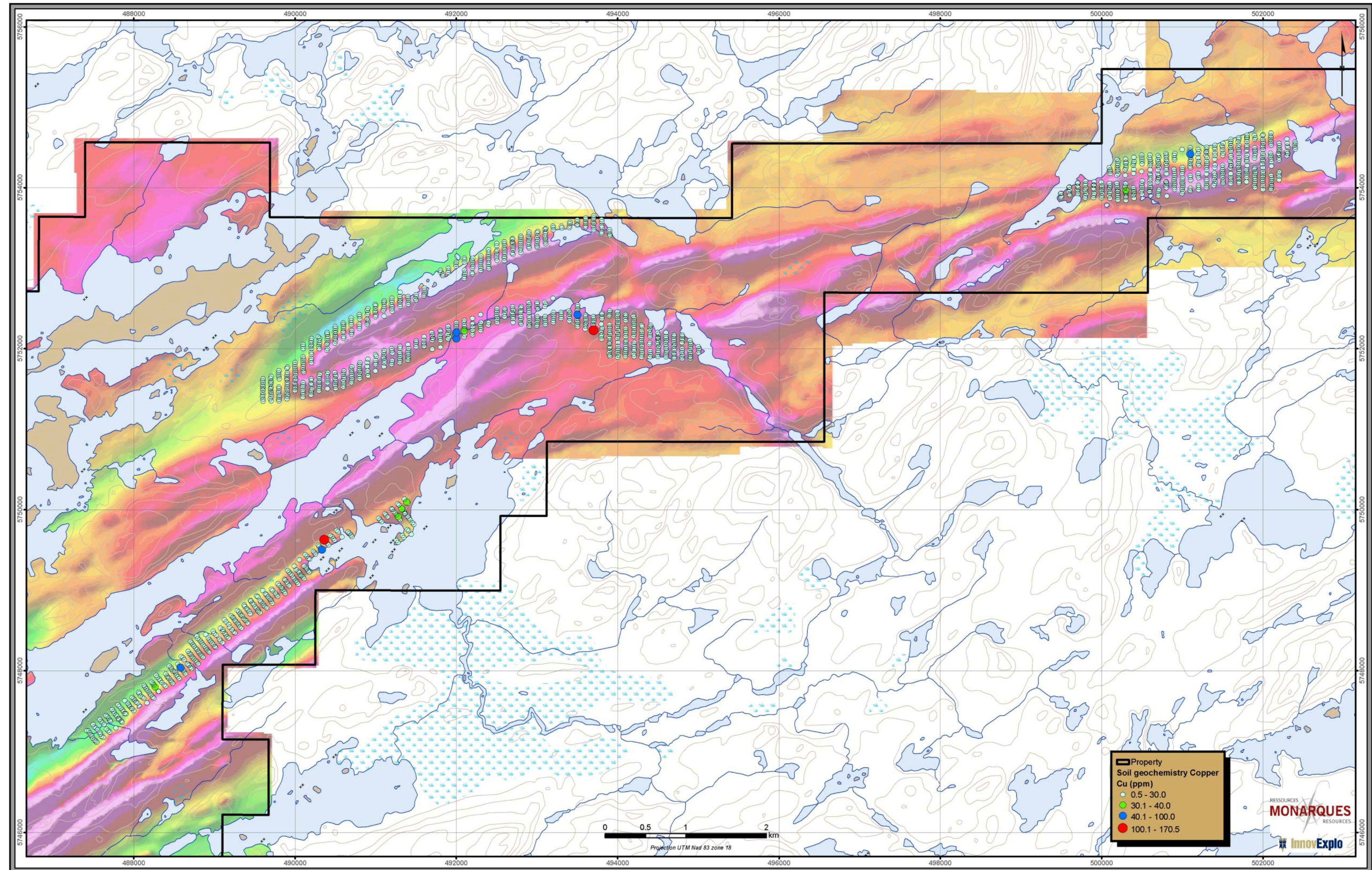


Figure 9.7 – Location of Cu soil samples on the Bourier property



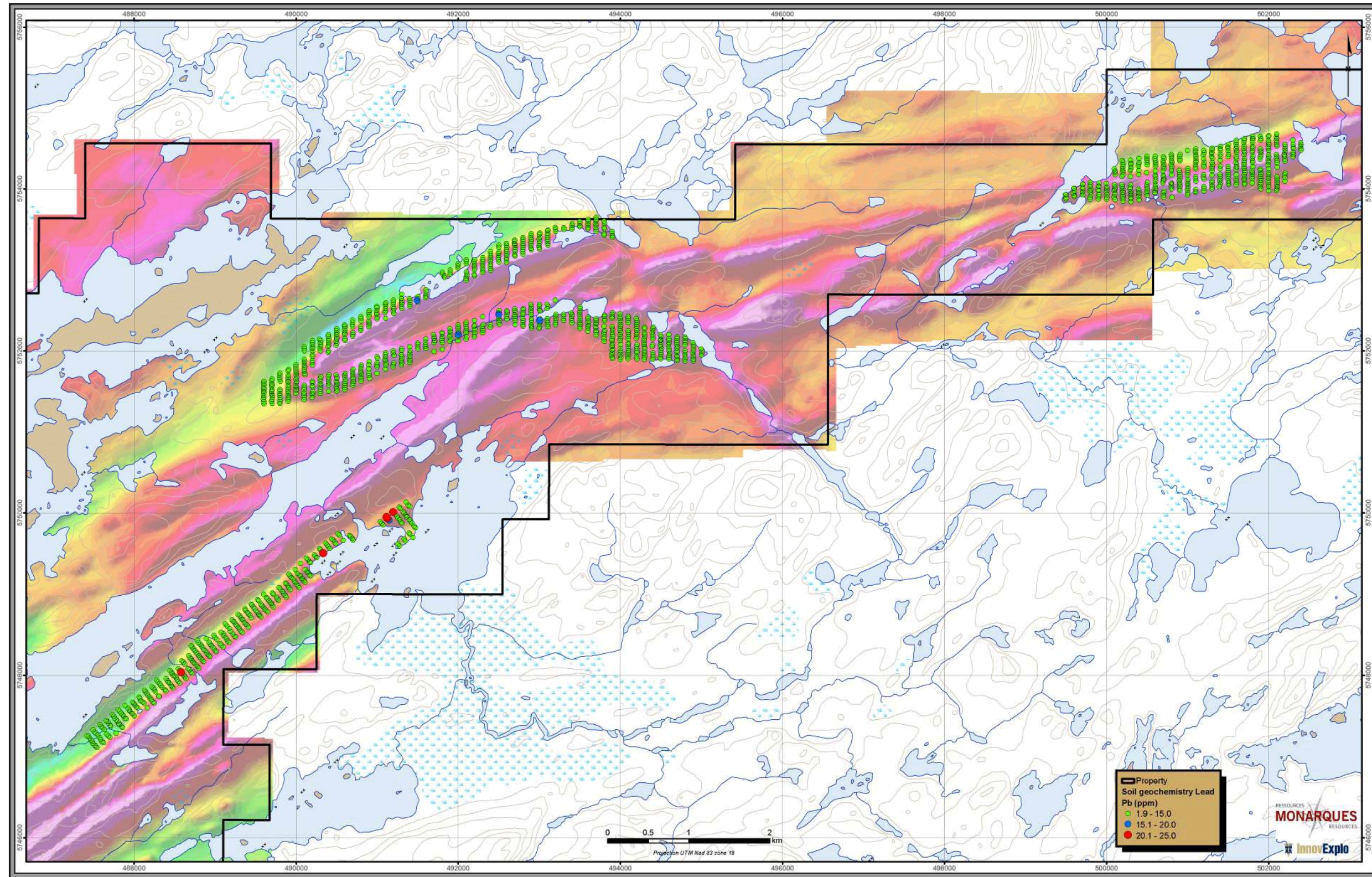


Figure 9.8 – Location of Pb soil samples on the Bourier property



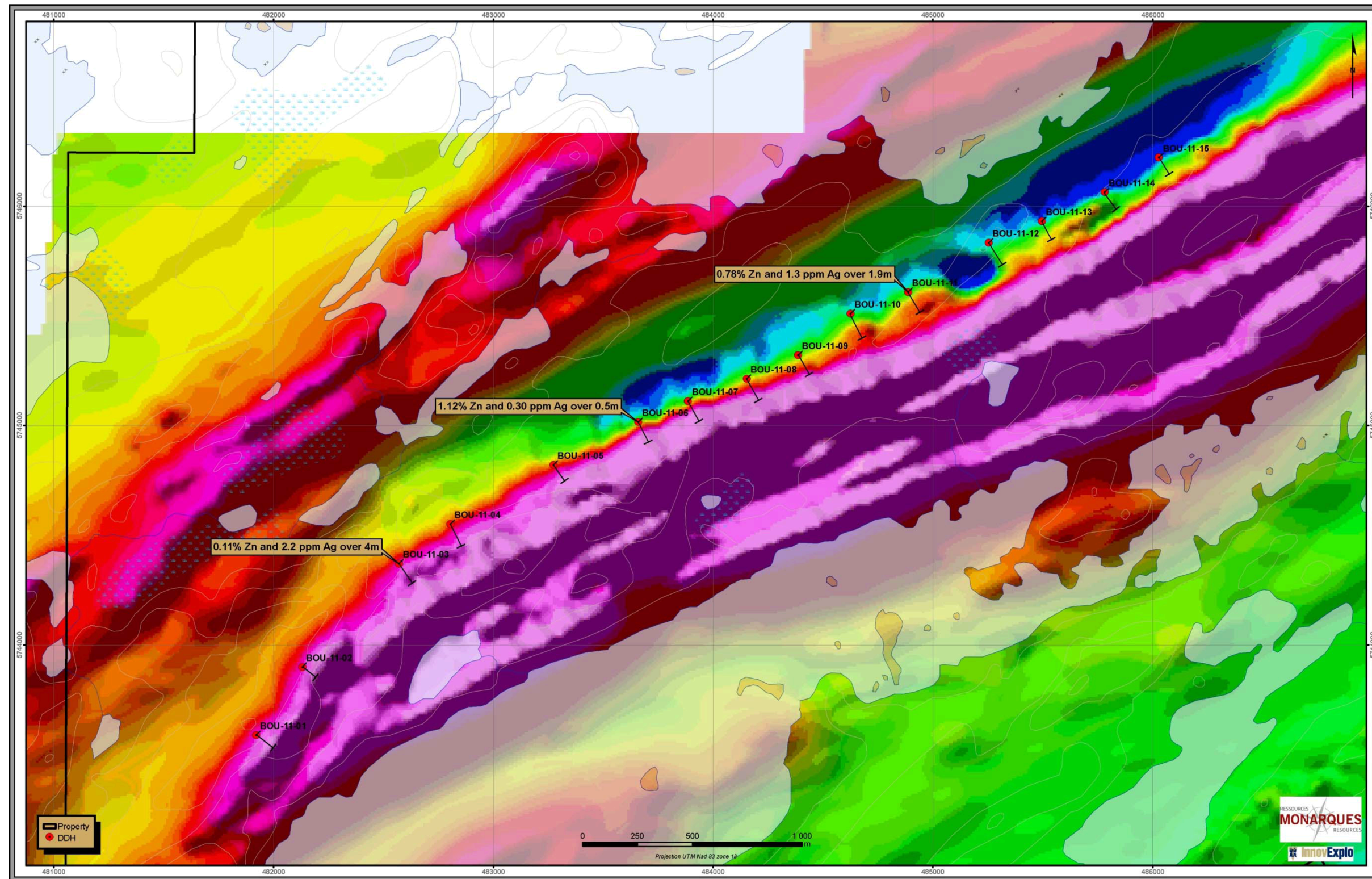


Figure 10.1 – Location of DDH completed in 2011 on the Bourrier property



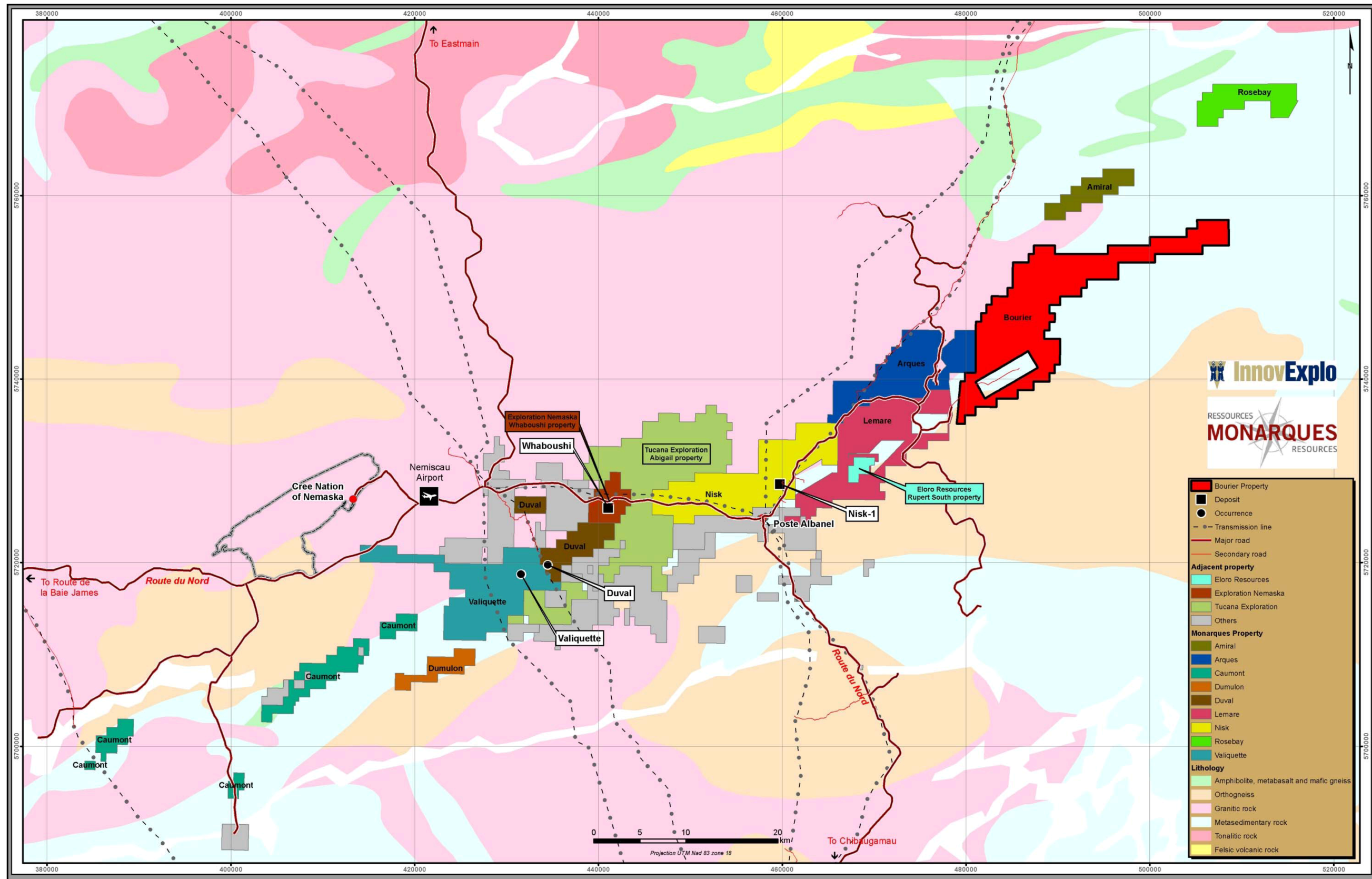


Figure 23.1 – Adjacent properties surrounding the Bourier property