

EASTMAIN RESOURCES INC.

**Eastmain Mine Property
Grids**

NAD 83 Zone 18

Figure 4

5,803,000 mN

5,802,000 mN

5,801,000 mN

5,800,000 mN

5,799,000 mN

5,798,000 mN

5,797,000 mN

5,796,000 mN

5,795,000 mN

705,000 mE

704,000 mE

703,000 mE

702,000 mE

701,000 mE

700,000 mE

699,000 mE

698,000 mE

697,000 mE

696,000 mE

695,000 mE

694,000 mE

693,000 mE



"NW" Grid

"G" Grid

"F" Grid

"S" Grid

"I" Grid

Placer Lake

Michel Lake

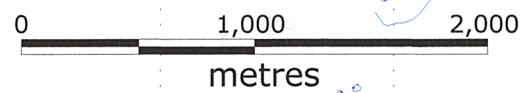
Julian Lake

Charlie Lake



Camp

Property Boundary







GM 67291

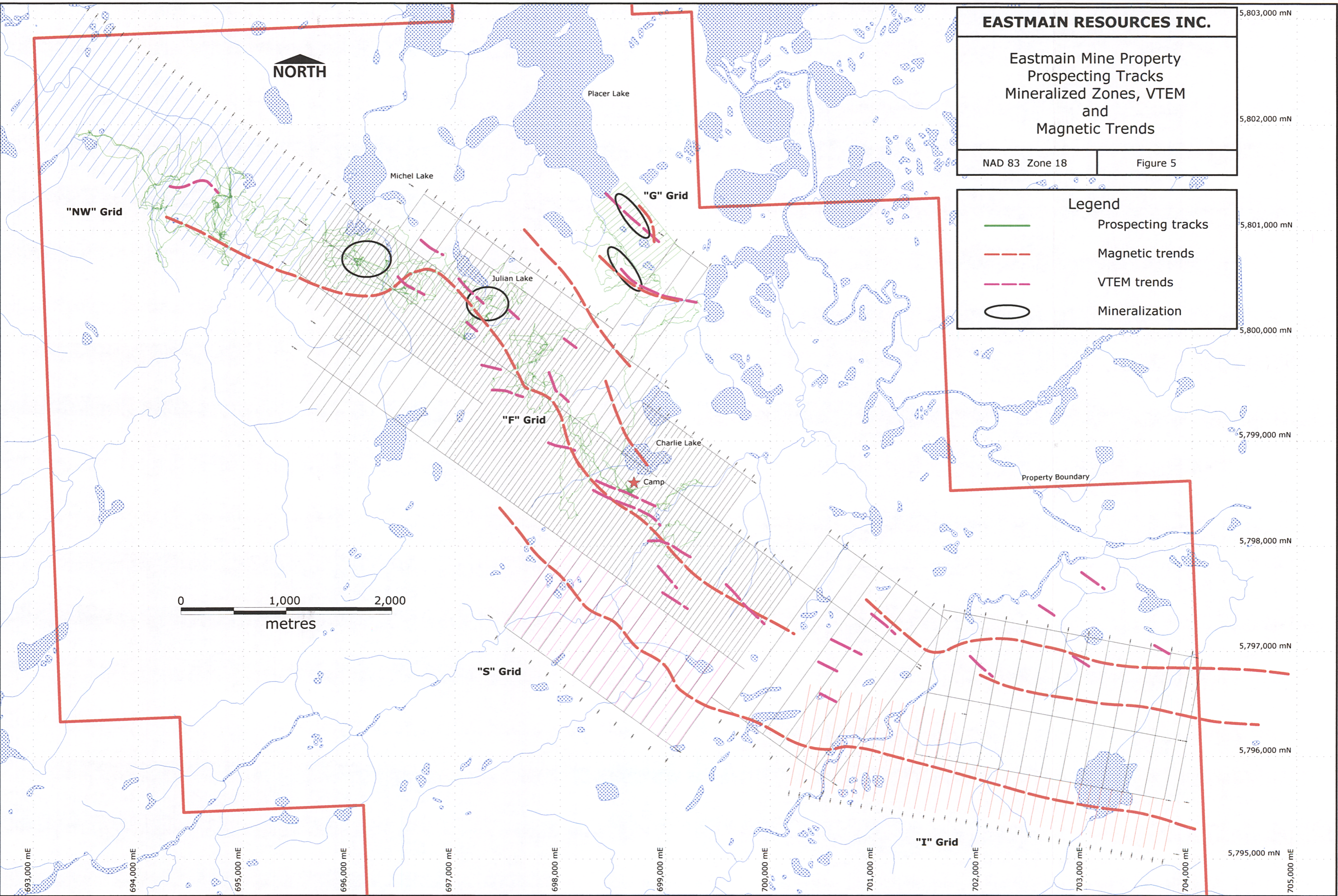
EASTMAIN RESOURCES INC.

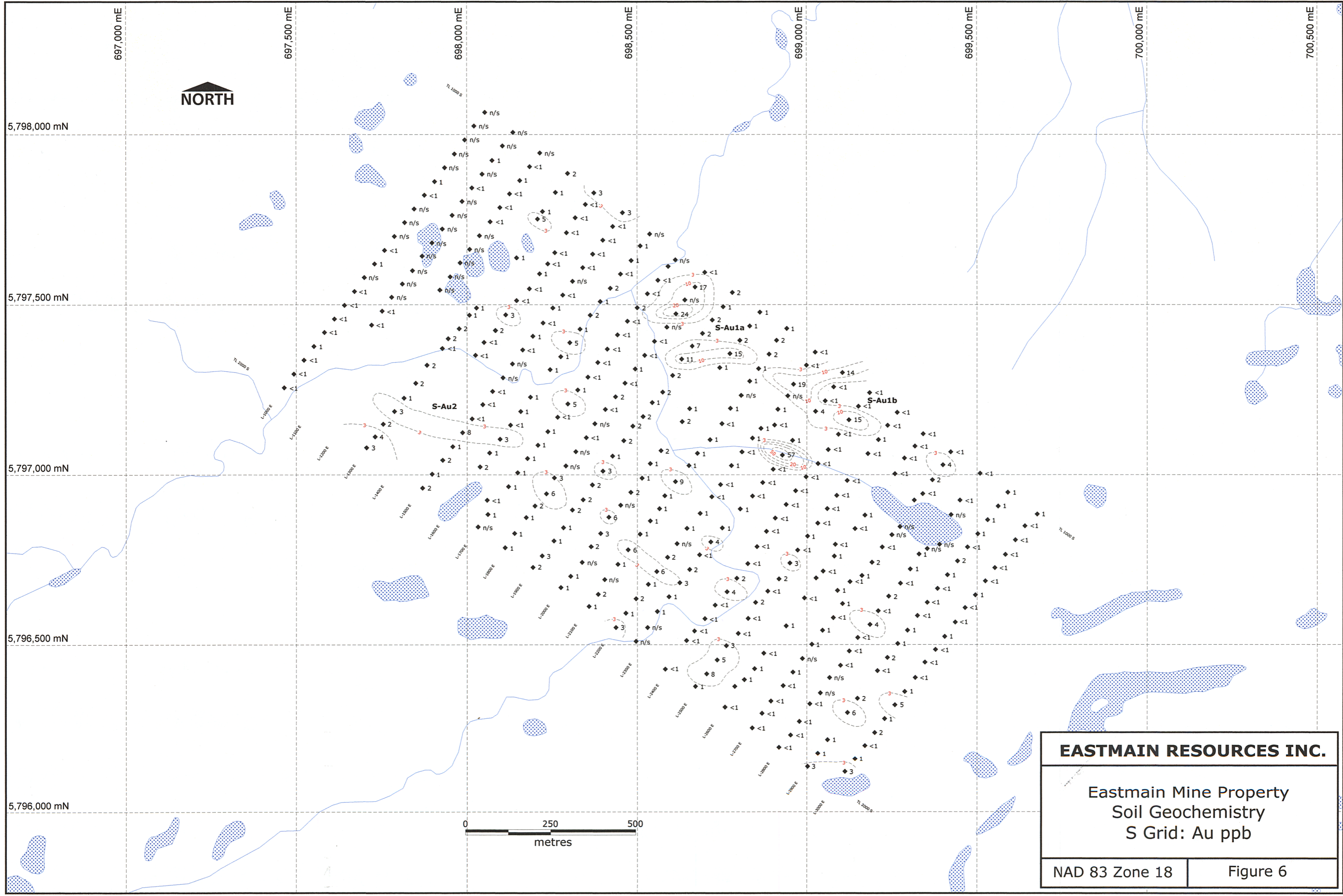
Eastmain Mine Property
Prospecting Tracks
Mineralized Zones, VTEM
and
Magnetic Trends

NAD 83 Zone 18 Figure 5

Legend

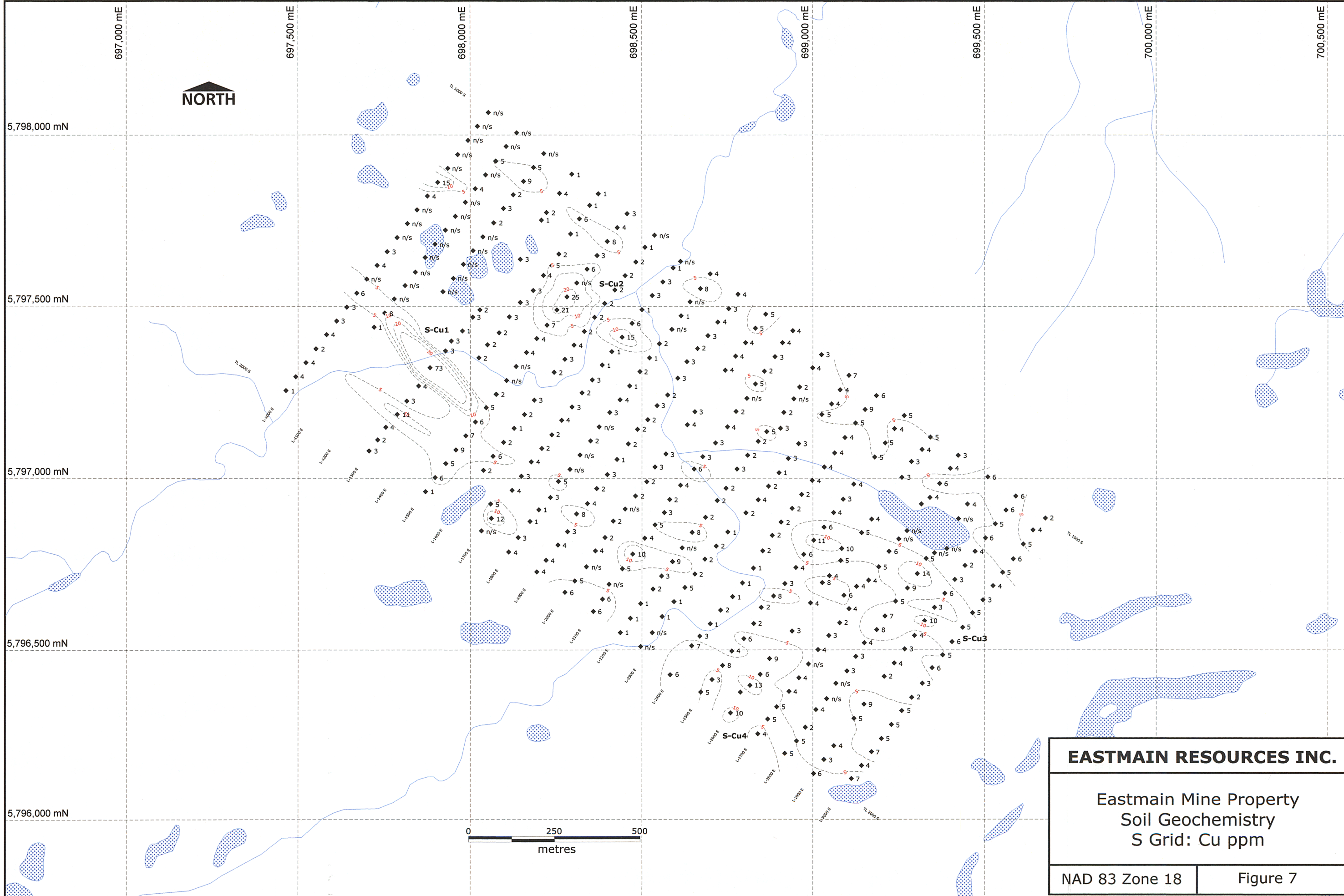
-  Prospecting tracks
-  Magnetic trends
-  VTEM trends
-  Mineralization





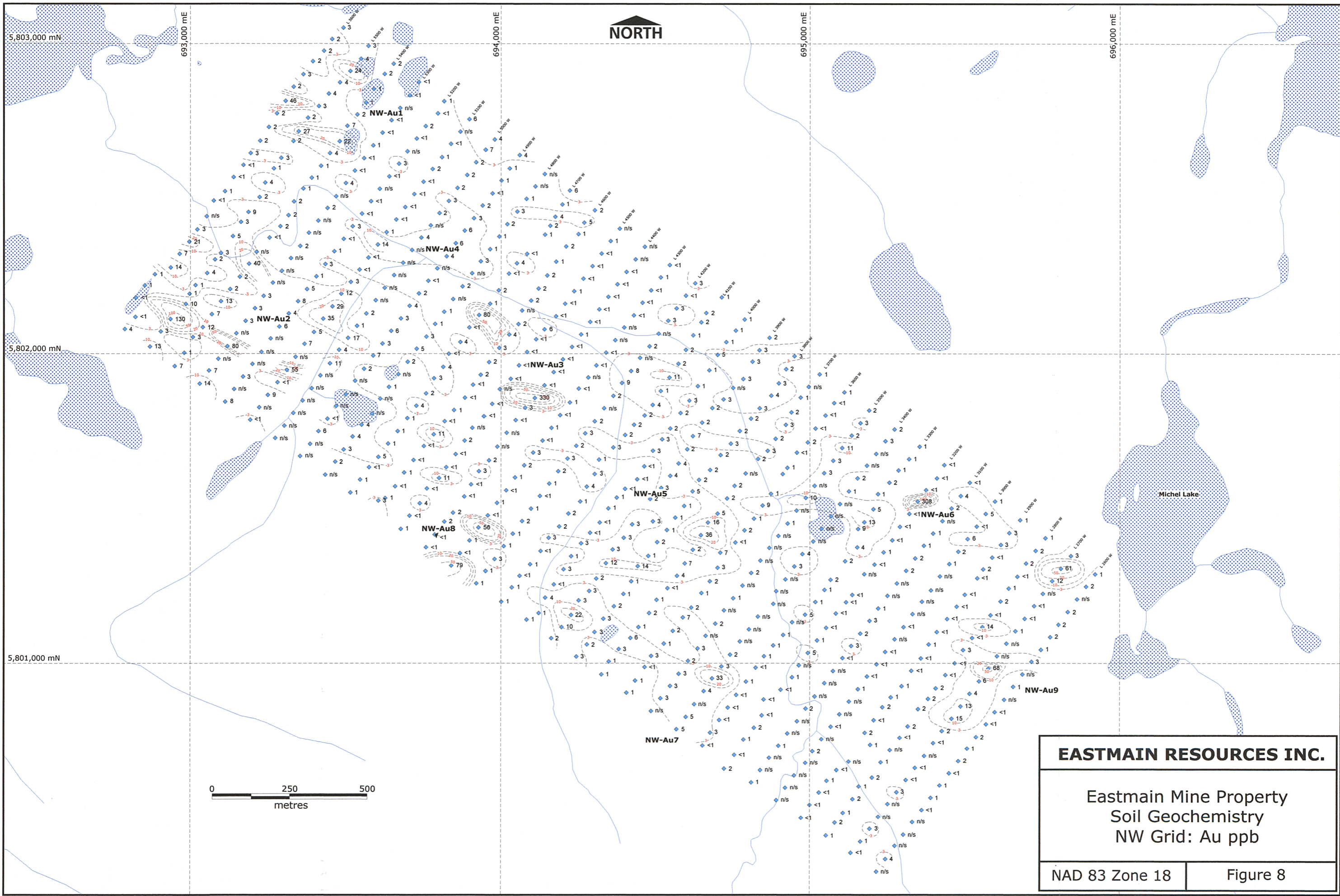
EASTMAIN RESOURCES INC.	
Eastmain Mine Property Soil Geochemistry S Grid: Au ppb	
NAD 83 Zone 18	Figure 6

GM 67291



EASTMAIN RESOURCES INC.	
Eastmain Mine Property Soil Geochemistry S Grid: Cu ppm	
NAD 83 Zone 18	Figure 7

GM 67291



NORTH

5,803,000 mN

693,000 mE

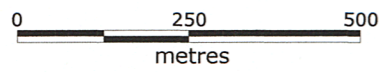
694,000 mE

695,000 mE

696,000 mE

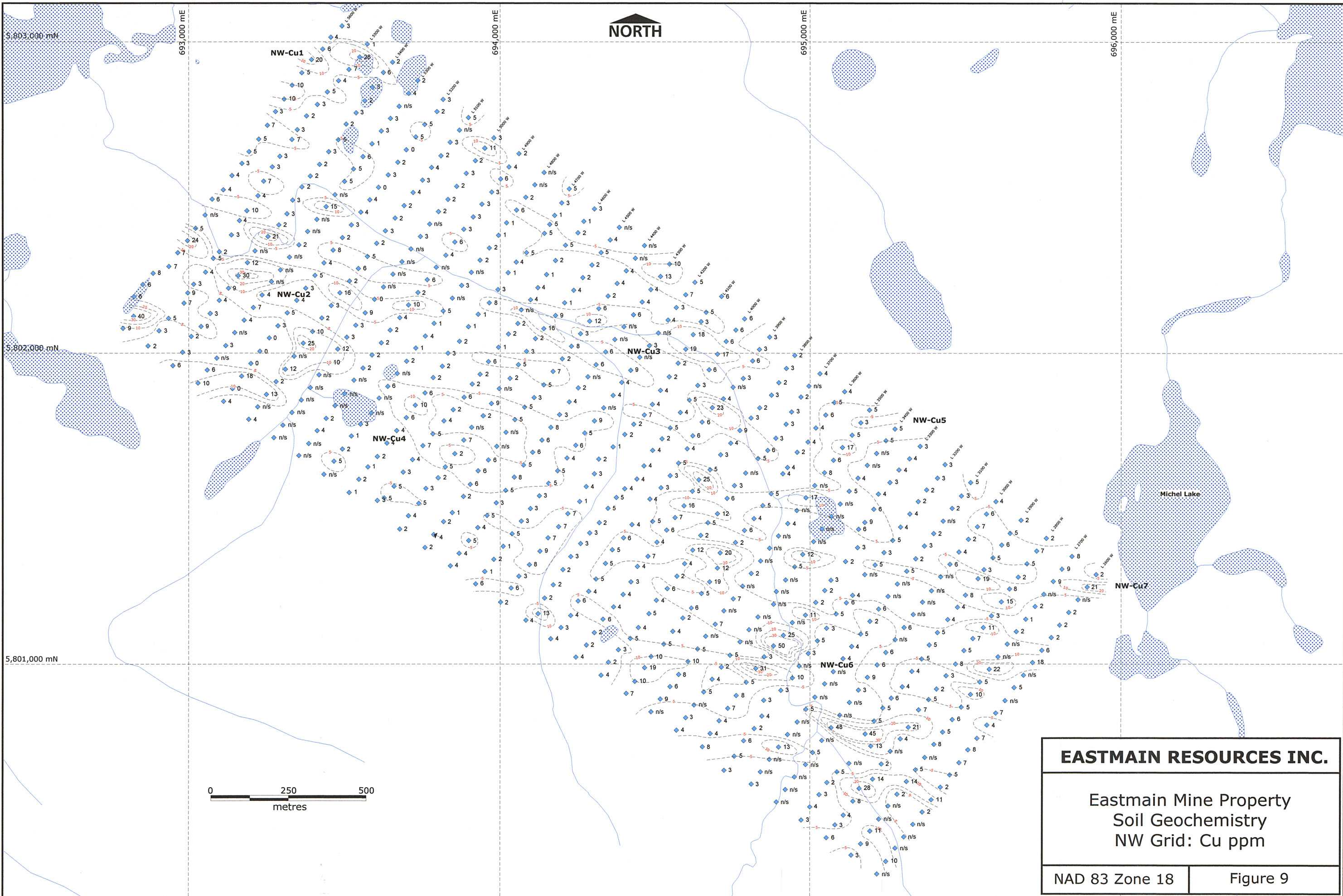
5,802,000 mN

5,801,000 mN



EASTMAIN RESOURCES INC.	
Eastmain Mine Property Soil Geochemistry NW Grid: Au ppb	
NAD 83 Zone 18	Figure 8

GM 67291



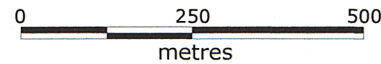
NORTH

5,803,000 mN
693,000 mE
5,802,000 mN
5,801,000 mN

694,000 mE

695,000 mE

696,000 mE

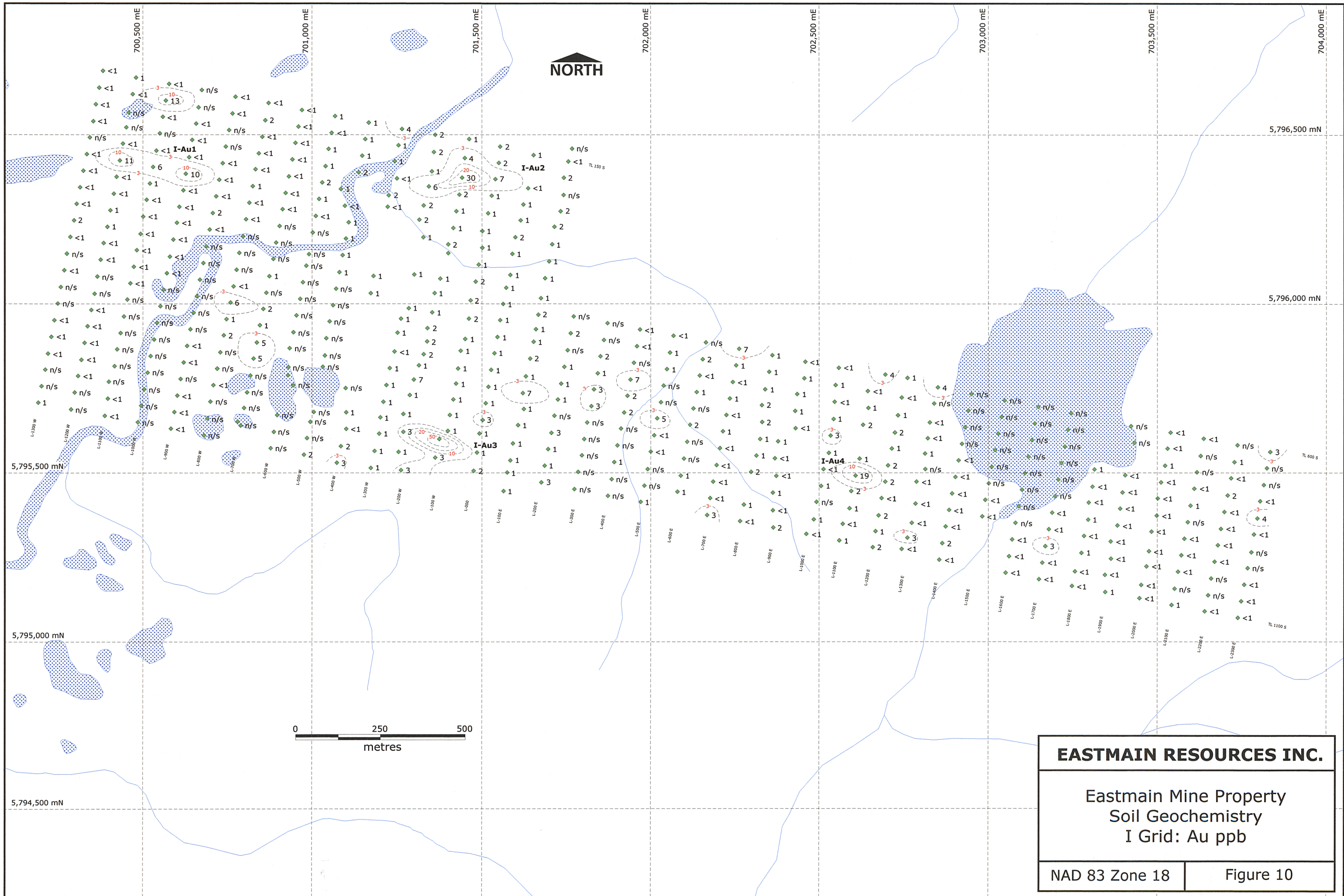


EASTMAIN RESOURCES INC.

Eastmain Mine Property
Soil Geochemistry
NW Grid: Cu ppm

NAD 83 Zone 18 | Figure 9

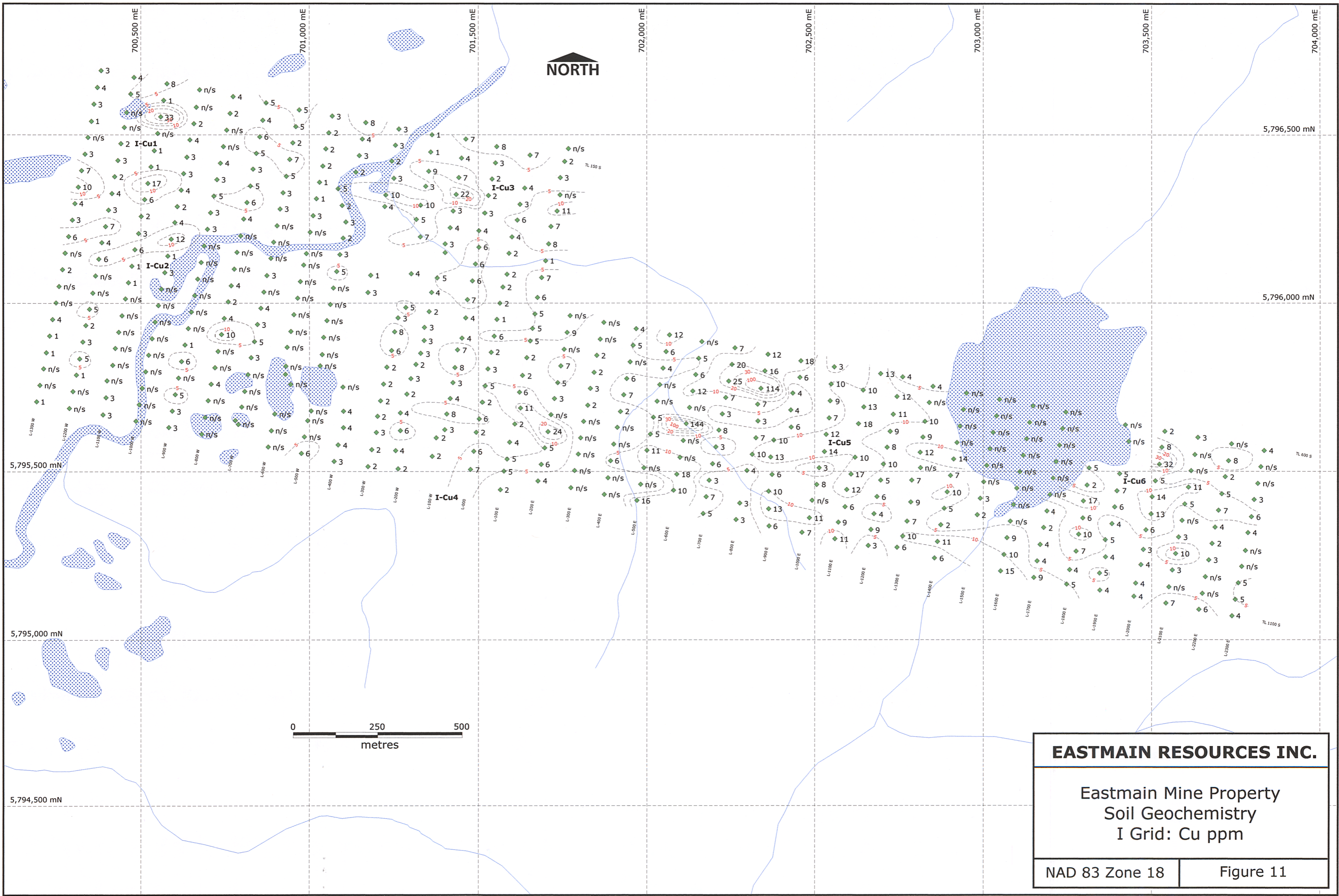
GM 6 7 2 9 1



EASTMAIN RESOURCES INC.

Eastmain Mine Property
Soil Geochemistry
I Grid: Au ppb

NAD 83 Zone 18 Figure 10

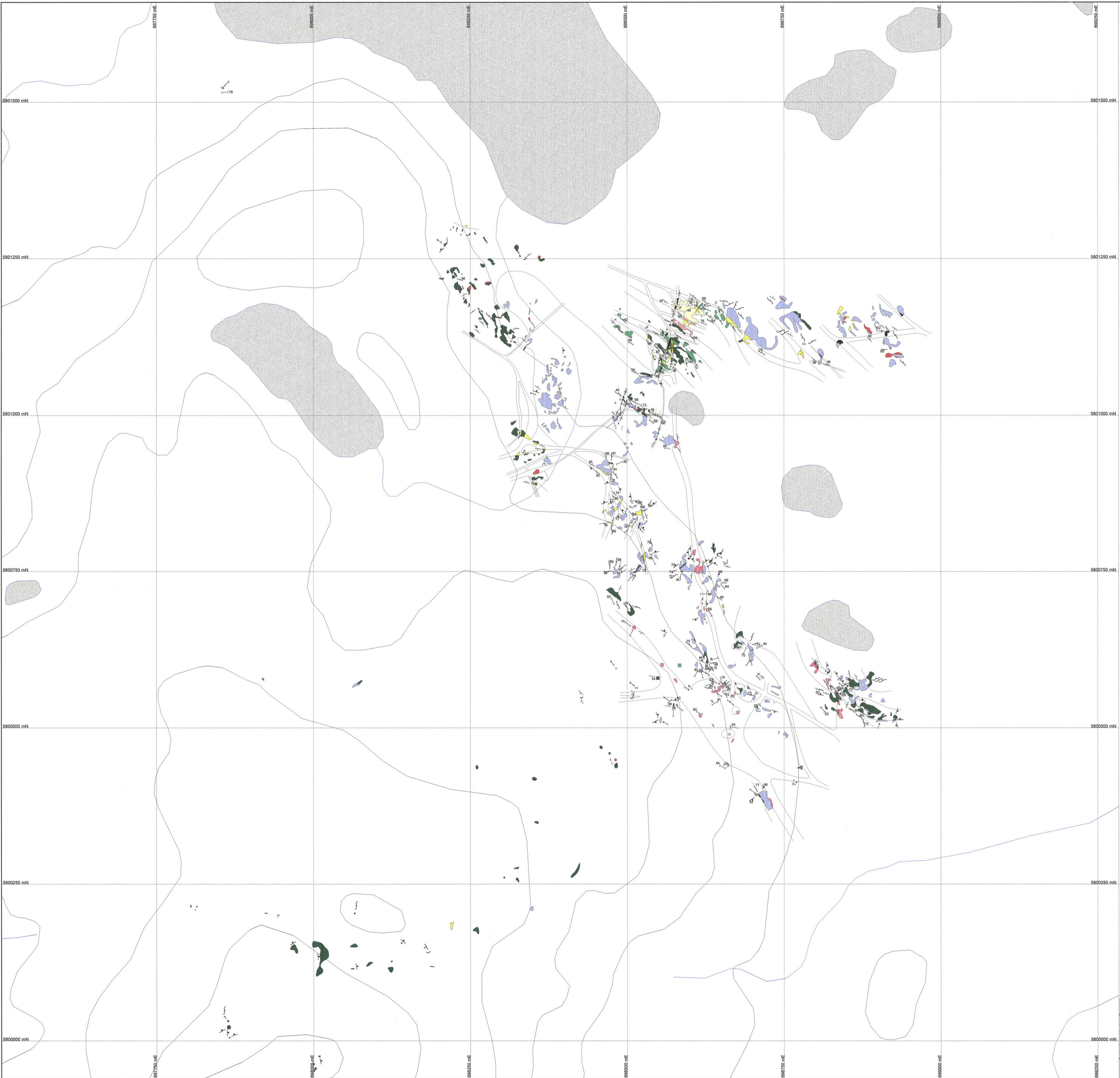


EASTMAIN RESOURCES INC.	
Eastmain Mine Property Soil Geochemistry I Grid: Cu ppm	
NAD 83 Zone 18	Figure 11

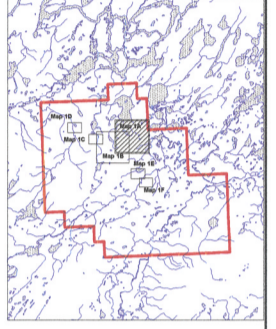
GM 67291



Figure 12: Jensen Cation Plot: Eastmain Mine Property



Nad 83 (Zone 18)
Magnetic declination 20° W



2009 Eastmain Mine Geology Legend

Structure	
[Symbol]	Vein
[Symbol]	Shear Zone
[Symbol]	Contact
[Symbol]	S1 Foldaxis
[Symbol]	Fault / Phage
[Symbol]	Joint
[Symbol]	Phage
Lithologies	
[Symbol]	Basalt
[Symbol]	Fine-grained Basalt
[Symbol]	Mafic Tuff
[Symbol]	Mafic Volcanic Breccia
[Symbol]	Felsic Volcanic Breccia
[Symbol]	Pyroxenite
[Symbol]	Gabbro
[Symbol]	Felsic Intrusion
[Symbol]	Felsic Intrusion (plutic)
[Symbol]	Granite
[Symbol]	Disseminated Ore-bearing Mafic-Carbonatized Zone
[Symbol]	Mafic Dyke
[Symbol]	Roll Zone
[Symbol]	Assumed Contact

GM 6 7 2 9 1

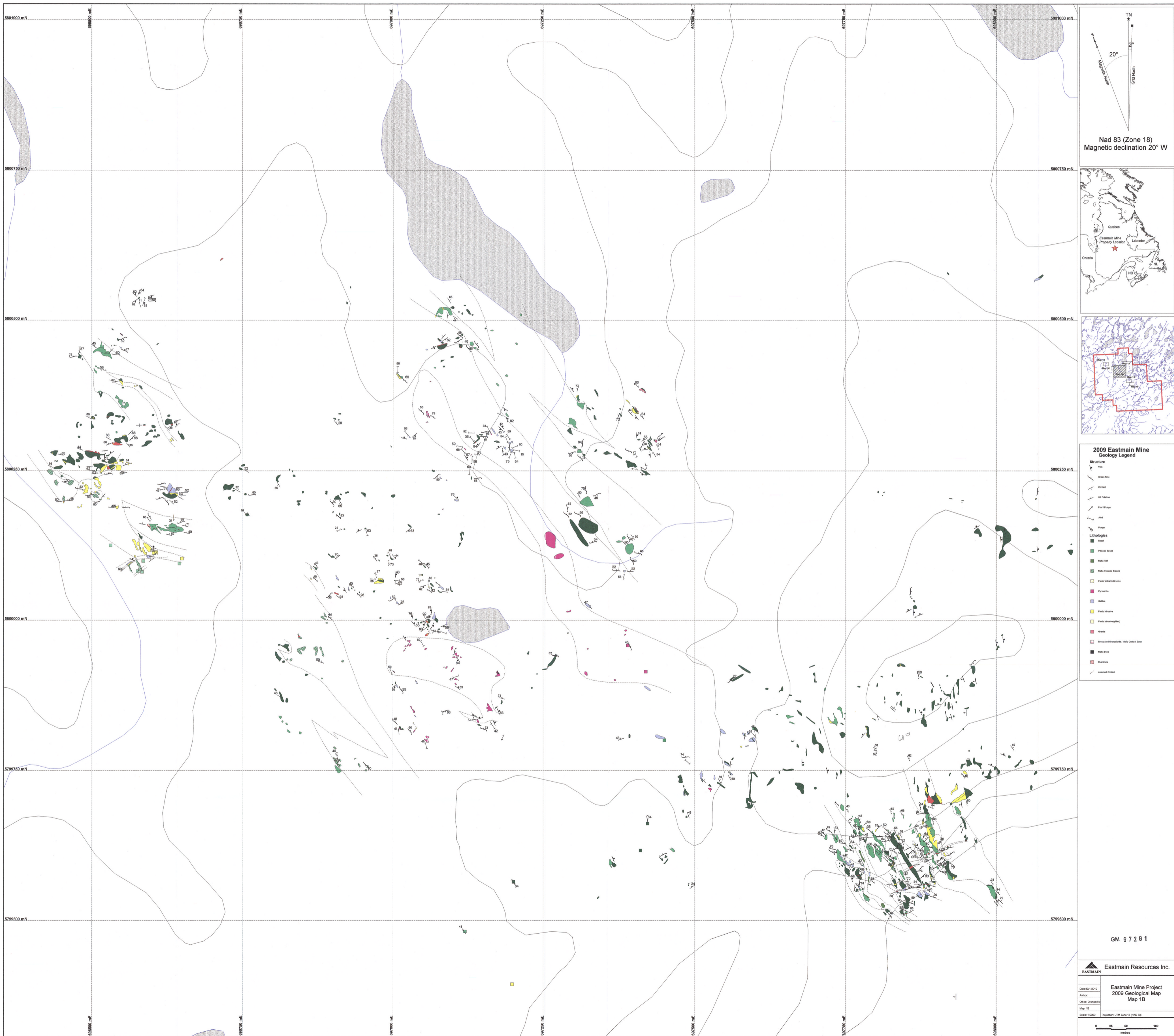
EASTMAIN Eastmain Resources Inc.

Eastmain Mine Project
2009 Geological Map
Map 1A

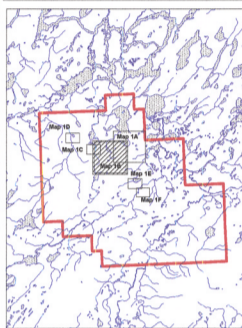
Date: 12/12/2010
Author:
Office: Otago
Map: 1A
Scale: 1:2000 Projection: UTM Zone 18 (NAD 83)

REC'D AU 2011
06 FEB 2011
PROPERTY OF EASTMAIN RESOURCES INC.

130470



Nad 83 (Zone 18)
Magnetic declination 20° W



**2009 Eastmain Mine
Geology Legend**

Structure	
[Symbol]	Shear Zone
[Symbol]	Concord
[Symbol]	S1 Foliation
[Symbol]	Fault Plane
[Symbol]	Joint
[Symbol]	Fracture
Lithologies	
[Symbol]	Basalt
[Symbol]	Fluvial Sand
[Symbol]	Melted Tuff
[Symbol]	Melted Volcanic Breccia
[Symbol]	Felsic Volcanic Breccia
[Symbol]	Pyroclastic
[Symbol]	Gabbro
[Symbol]	Granite
[Symbol]	Felsic Volcanic Gabbro
[Symbol]	Granite
[Symbol]	Basement (Granite/Melted Volcanic Breccia)
[Symbol]	Melted Dike
[Symbol]	Fracture Zone
[Symbol]	Assumed Contact

GM 6 7 2 9 1

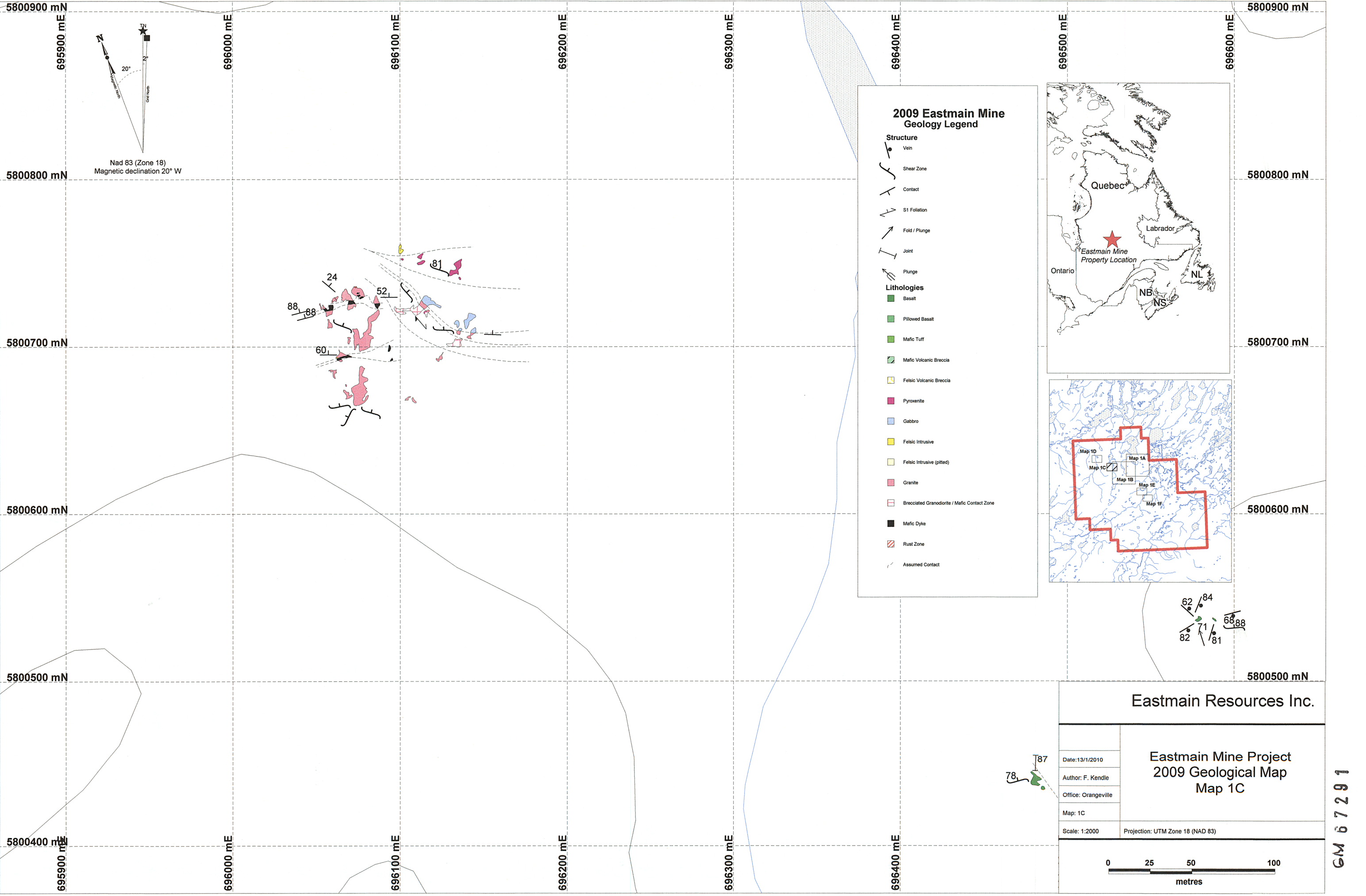
EASTMAIN Eastmain Resources Inc.

Date: 13/10/10	Eastmain Mine Project
Author: [Name]	2009 Geological Map
Office: [Location]	Map 1B
Map: 1B	
Scale: 1:5000	Projection: UTM Zone 18 (NAD 83)

0 25 50 100 metres

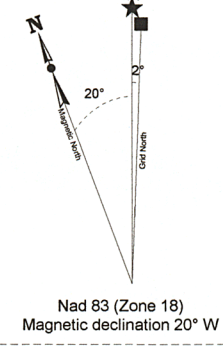
REGU AU MINIF
06 FEV 2011
Direction des Ressources Géologiques

130470



5800900 mN
695900 mE
5800800 mN
5800700 mN
5800600 mN
5800500 mN
5800400 mN

696000 mE
696100 mE
696200 mE
696300 mE
696400 mE
696500 mE
696600 mE



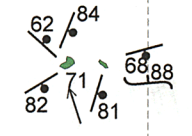
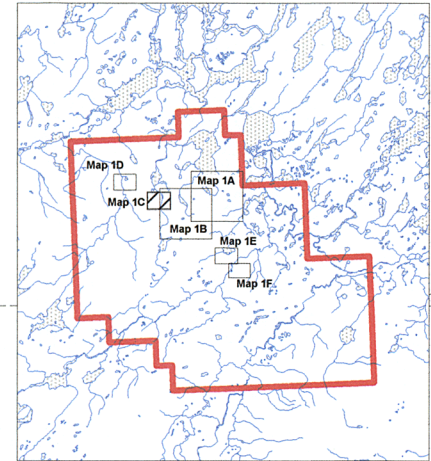
2009 Eastmain Mine Geology Legend

Structure

- Vein
- Shear Zone
- Contact
- S1 Foliation
- Fold / Plunge
- Joint
- Plunge

Lithologies

- Basalt
- Pillowed Basalt
- Mafic Tuff
- Mafic Volcanic Breccia
- Felsic Volcanic Breccia
- Pyroxenite
- Gabbro
- Felsic Intrusive
- Felsic Intrusive (pitted)
- Granite
- Brecciated Granodiorite / Mafic Contact Zone
- Mafic Dyke
- Rust Zone
- Assumed Contact



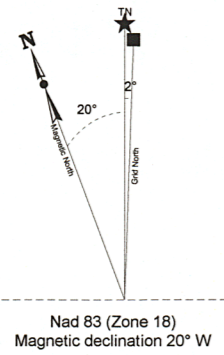
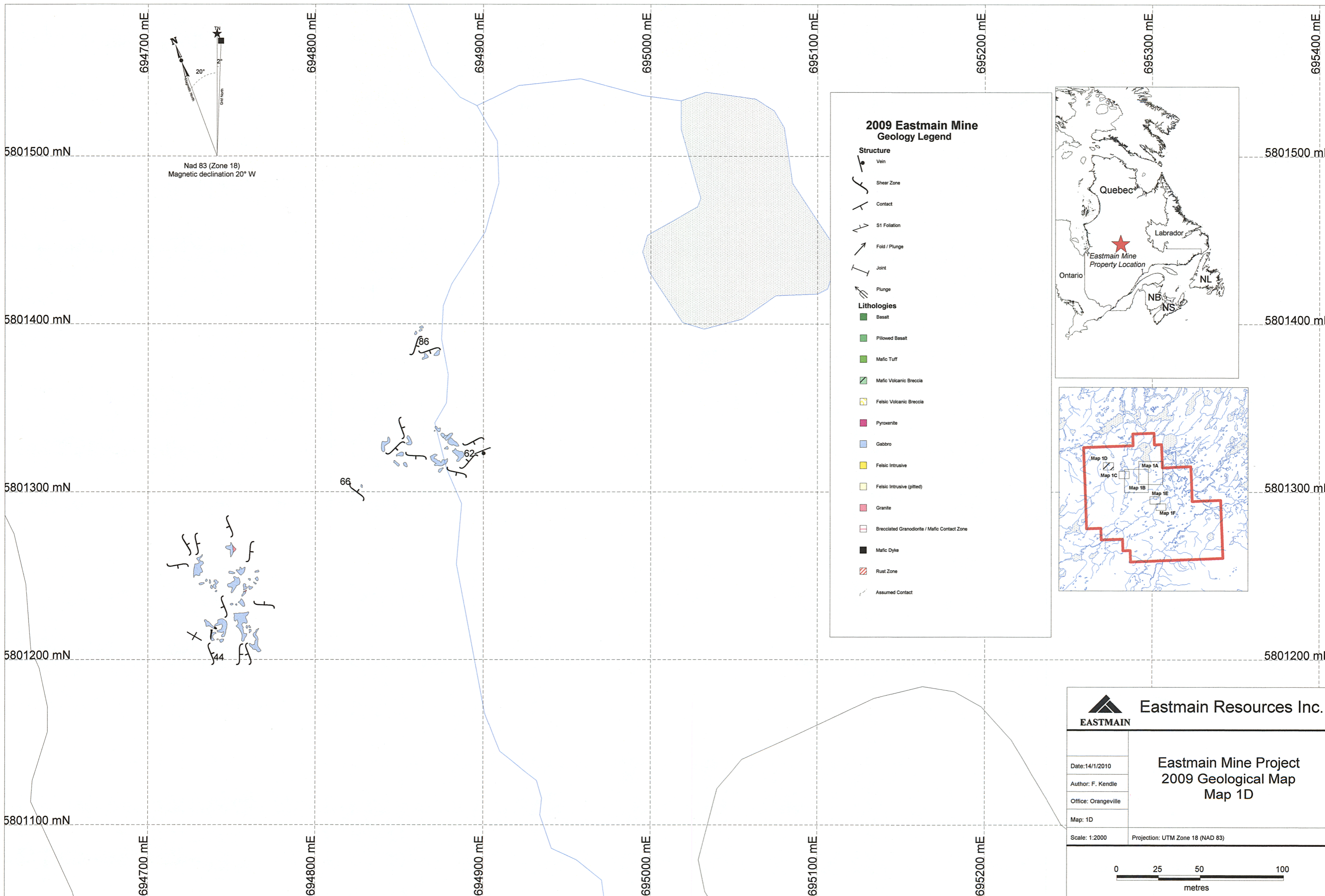
Eastmain Resources Inc.

Eastmain Mine Project
2009 Geological Map
Map 1C

Date: 13/1/2010
Author: F. Kandle
Office: Orangeville
Map: 1C
Scale: 1:2000
Projection: UTM Zone 18 (NAD 83)

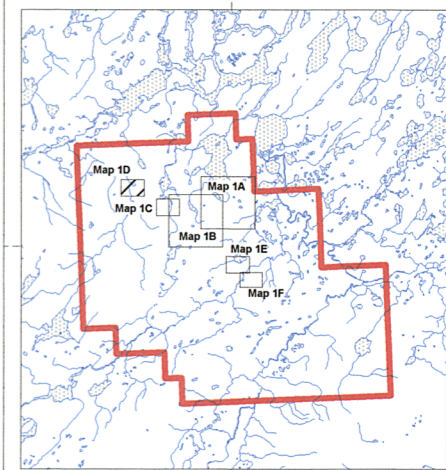
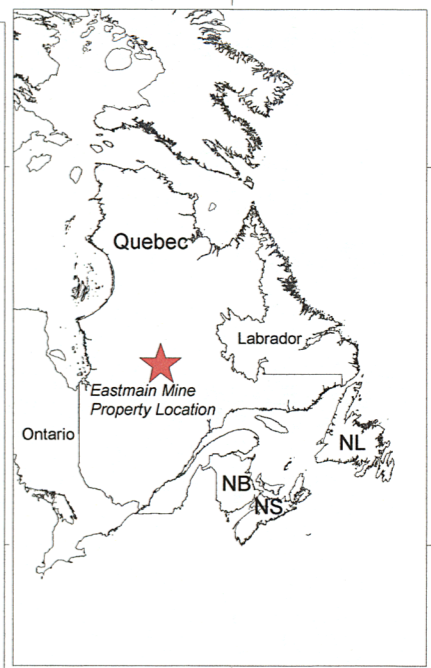
0 25 50 100 metres

GM 67291



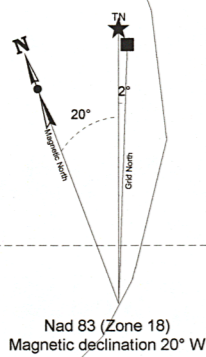
2009 Eastmain Mine Geology Legend

- Structure**
- Vein
- Shear Zone
- Contact
- S1 Foliation
- Fold / Plunge
- Joint
- Plunge
- Lithologies**
- Basalt
- Pillowed Basalt
- Mafic Tuff
- Mafic Volcanic Breccia
- Felsic Volcanic Breccia
- Pyroxenite
- Gabbro
- Felsic Intrusive
- Felsic Intrusive (pitted)
- Granite
- Brecciated Granodiorite / Mafic Contact Zone
- Mafic Dyke
- Rust Zone
- Assumed Contact



Eastmain Resources Inc.	
Date: 14/1/2010	Eastmain Mine Project 2009 Geological Map Map 1D
Author: F. Kendle	
Office: Orangeville	
Map: 1D	
Scale: 1:2000	Projection: UTM Zone 18 (NAD 83)

Charlie Lake



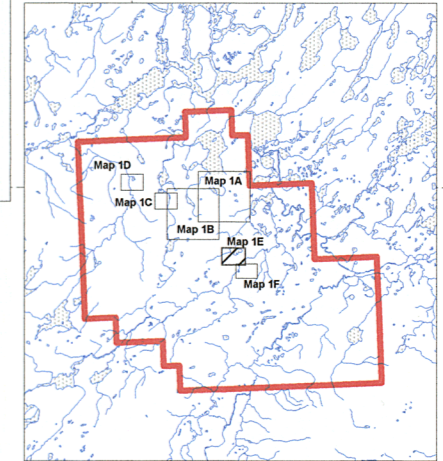
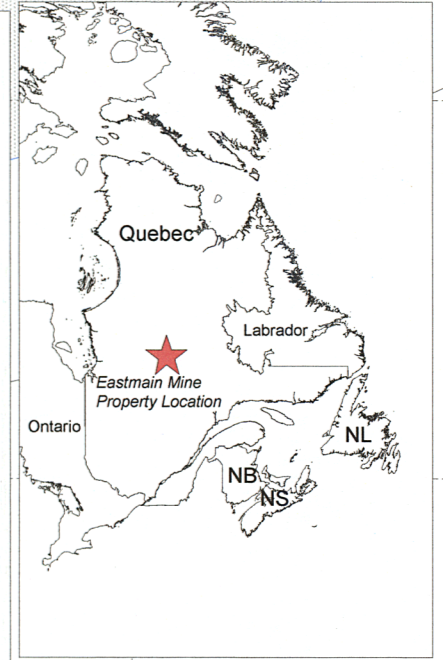
2009 Eastmain Mine Geology Legend

Structure

- Vein
- Shear Zone
- Contact
- S1 Foliation
- Fold / Plunge
- Joint
- Plunge

Lithologies

- Basalt
- Pillowed Basalt
- Mafic Tuff
- Mafic Volcanic Breccia
- Felsic Volcanic Breccia
- Pyroxenite
- Gabbro
- Felsic Intrusive
- Felsic Intrusive (gitted)
- Granite
- Brecciated Granodiorite / Mafic Contact Zone
- Mafic Dyke
- Rust Zone
- Assumed Contact



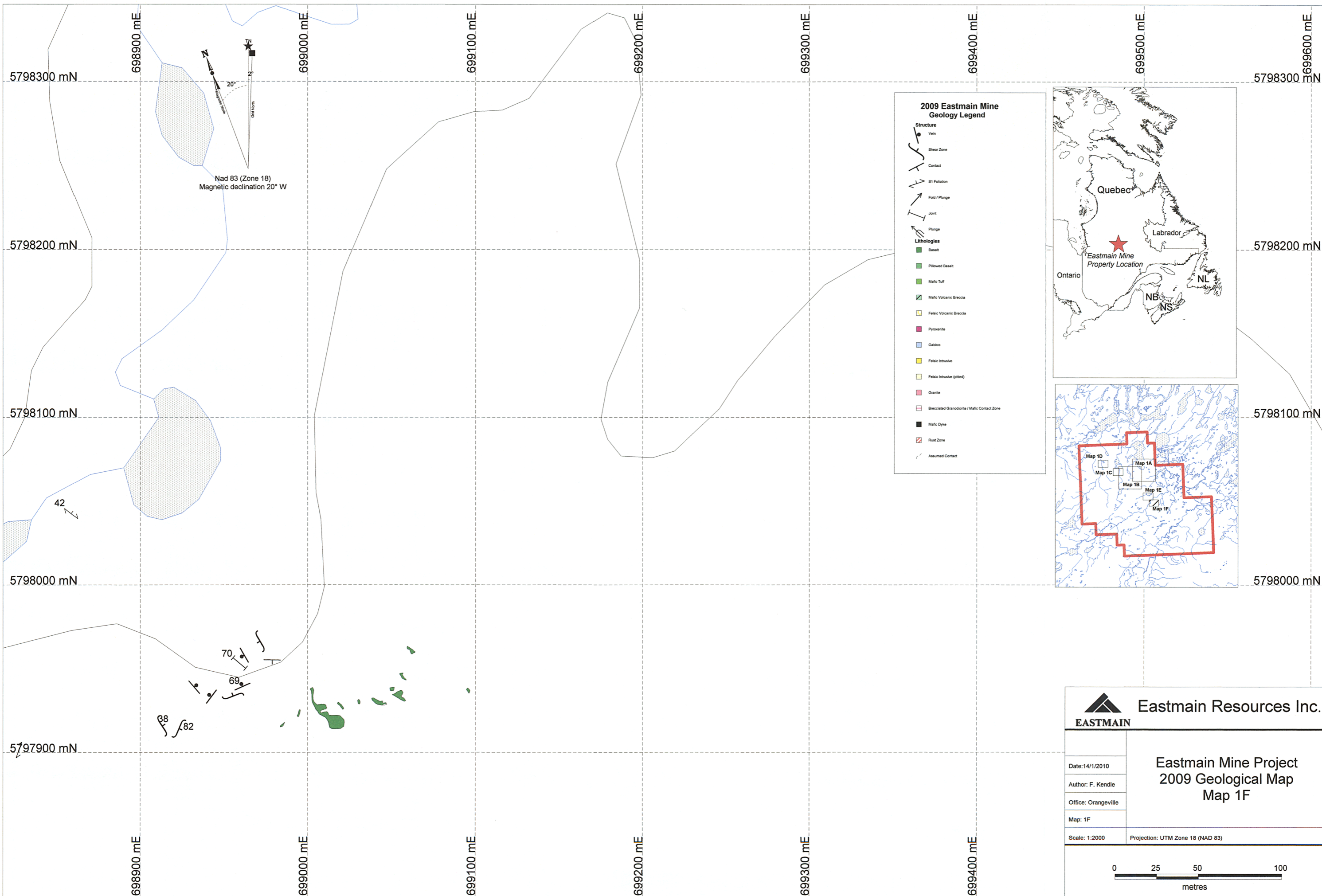
Camp

56
42

EASTMAIN Eastmain Resources Inc.

Date: 14/1/2010
Author: F. Kendle
Office: Orangeville
Map: 1E
Scale: 1:2000
Projection: UTM Zone 18 (NAD 83)

**Eastmain Mine Project
2009 Geological Map
Map 1E**



Nad 83 (Zone 18)
Magnetic declination 20° W

42

68
69
70
82

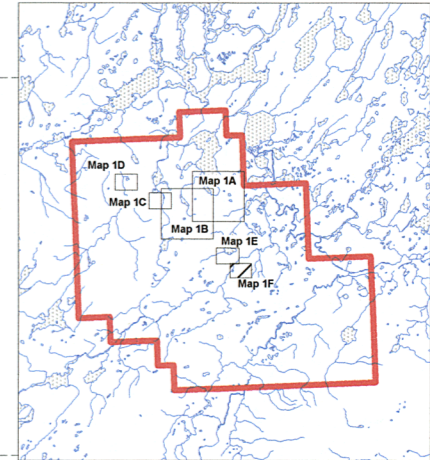
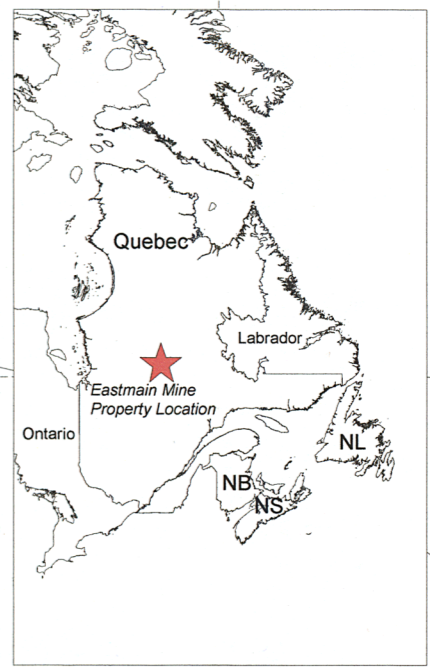
2009 Eastmain Mine Geology Legend

Structure

- Vein
- ~ Shear Zone
- Contact
- ~ S1 Foliation
- ~ Fold / Plunge
- ~ Joint
- ~ Plunge

Lithologies

- Basalt
- Pillowed Basalt
- Mafic Tuff
- Mafic Volcanic Breccia
- Felsic Volcanic Breccia
- Pyroxenite
- Gabbro
- Felsic Intrusive
- Felsic Intrusive (pitted)
- Granite
- Brecciated Granodiorite / Mafic Contact Zone
- Mafic Dyke
- Rust Zone
- Assumed Contact



EASTMAIN Eastmain Resources Inc.

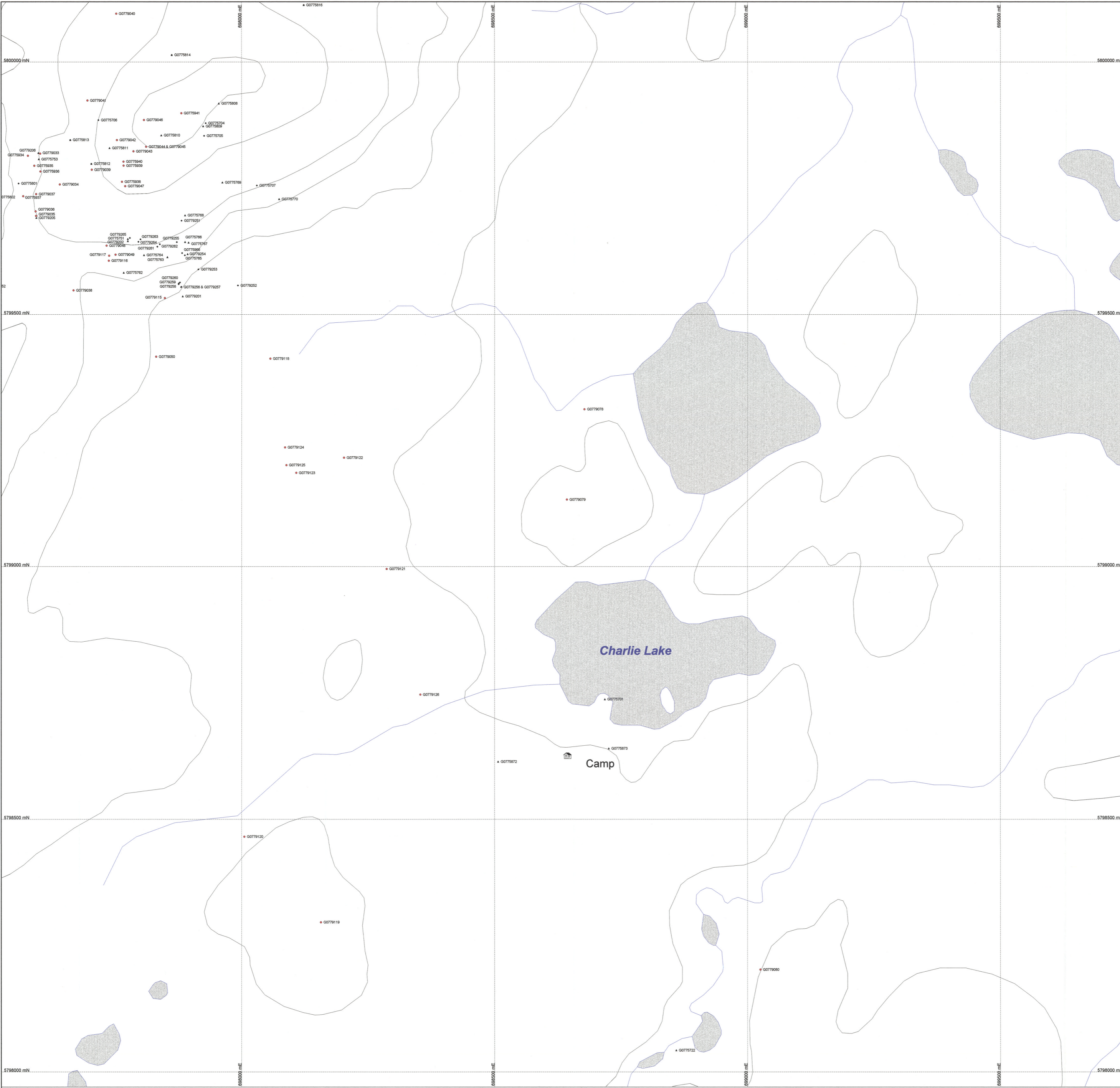
Date: 14/1/2010
 Author: F. Kendle
 Office: Orangeville
 Map: 1F

**Eastmain Mine Project
2009 Geological Map
Map 1F**

Scale: 1:2000 Projection: UTM Zone 18 (NAD 83)

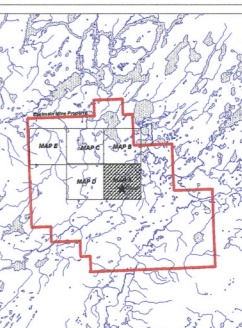
0 25 50 100
metres

GM 6 7 2 9 1



TN
 20°
 Magnetic North
 Grid North

Nad 83 (Zone 18)
 Magnetic declination 20° W



Legend

- 2009 Prospector Assay Sample
- ◆ 2009 Geologist Assay Sample
- ▲ 2009 Geologist Whole Rock Sample
- 🏠 Eastmain Mine Camp Location

GM 6 7 2 9 1

EASTMAIN Eastmain Resources Inc.

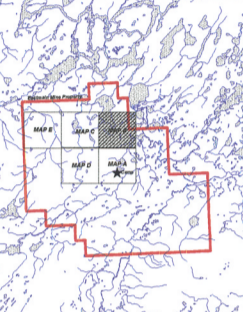
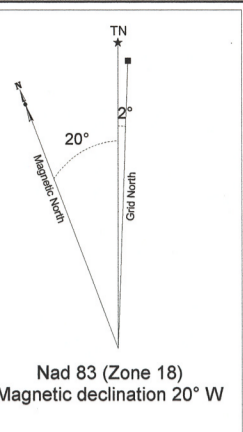
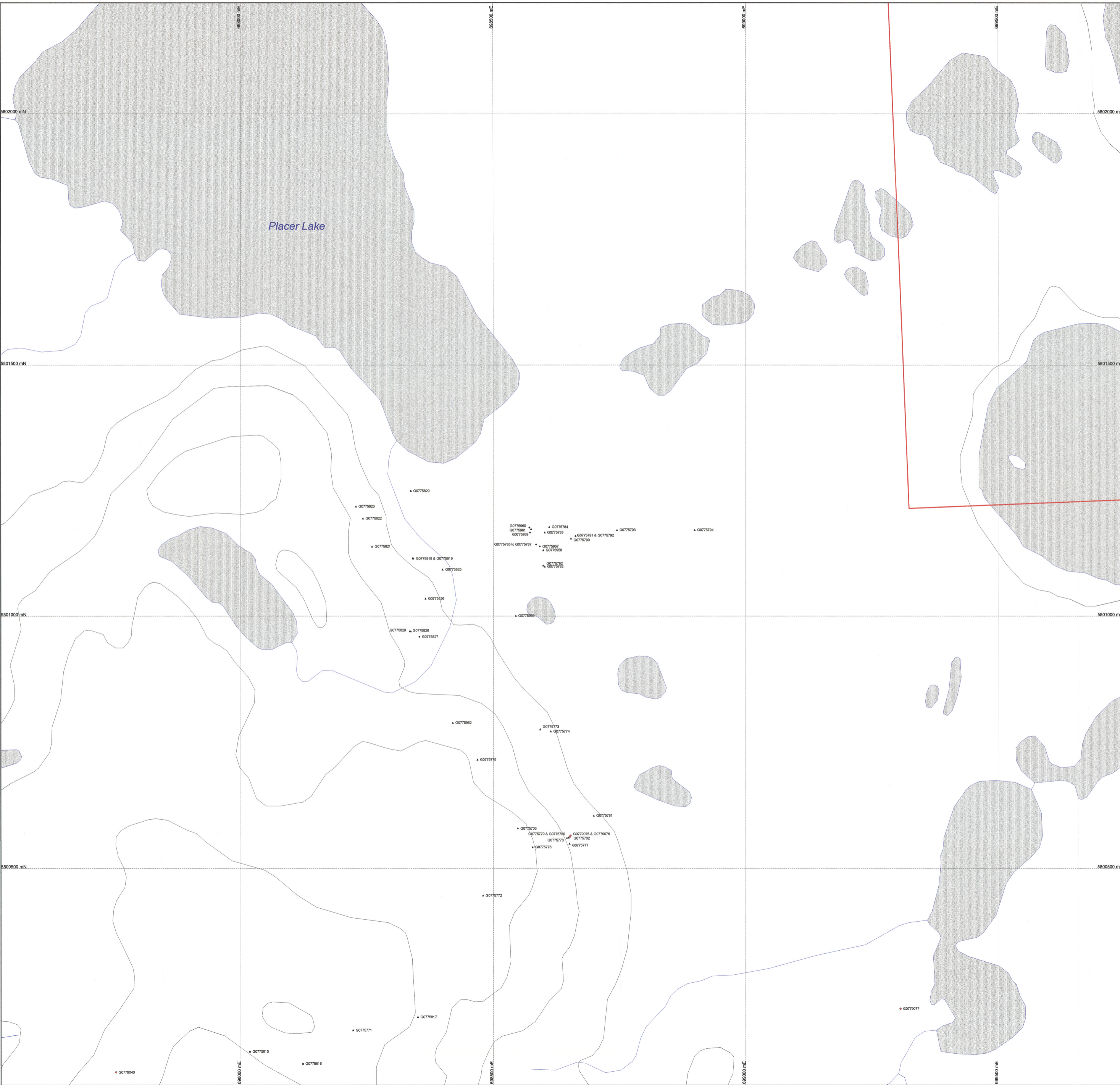
Eastmain Mine Project
 2009 Rock Sample
 Location Map
 Map 2A

Date: 11/10/10
 Author: F. Kende
 Office: Chagnac
 Map: 2A
 Scale: 1:2000
 Projection: UTM Zone 18 QAD 83

0 25 50 100
 metres

REGU AU MINIER
 06 FEV 2011 10h
 (Stamp from the Quebec Ministry of Energy and Petroleum)

130470



- Legend**
- 2009 Prospector Assay Sample
 - ◆ 2009 Geologist Assay Sample
 - ▲ 2009 Geologist Whole Rock Sample
 - Eastmain Mine Camp Location

GM 67281

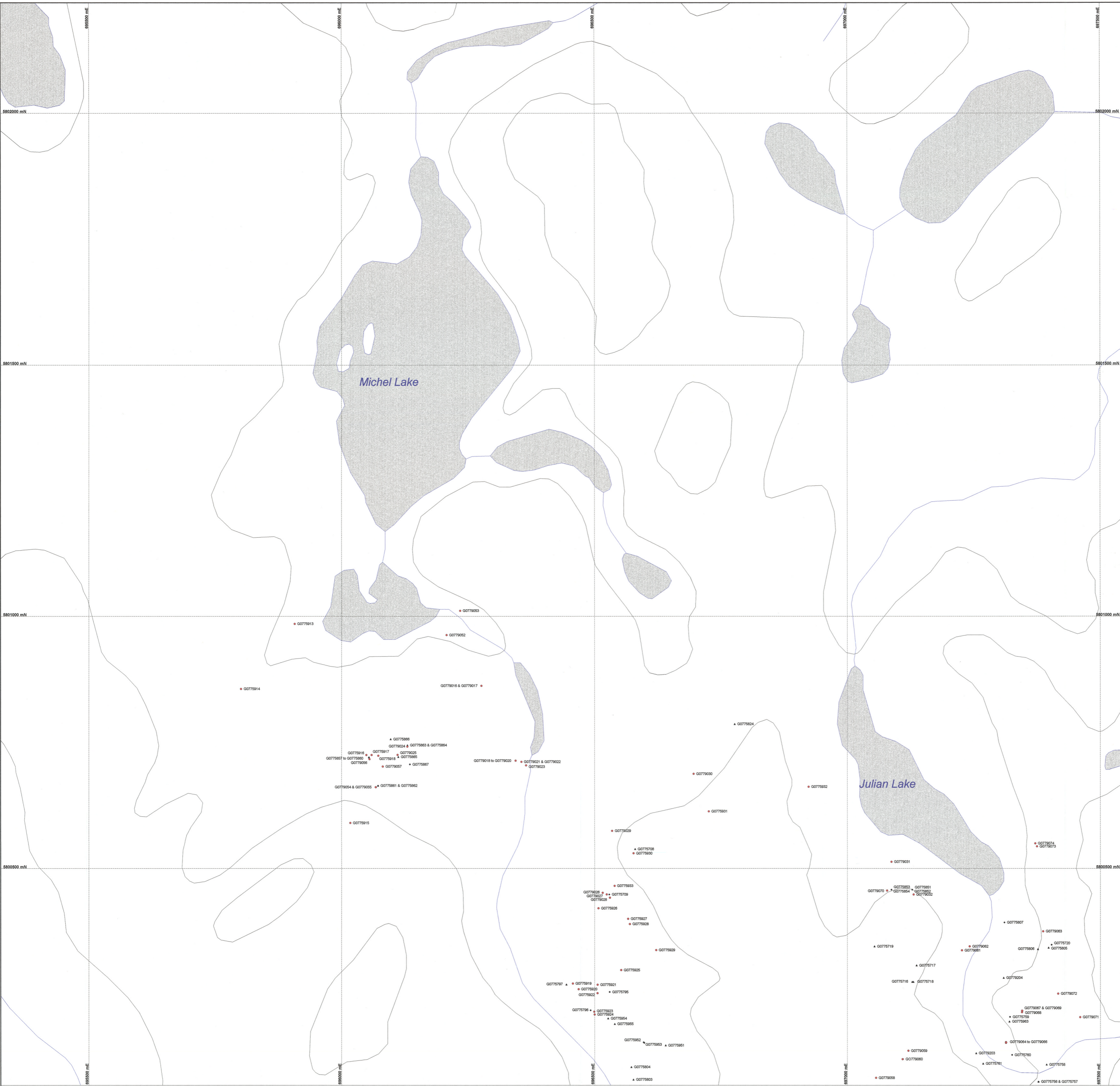
EASTMAIN Eastmain Resources Inc.

Eastmain Mine Project
2009 Rock Sample
Location Map
Map 2B

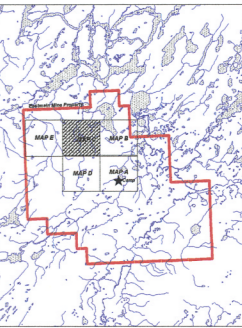
Date: 11/05/09
Author: F. Kavanagh
Office: Chagnonville
Map: 2B
Scale: 1:2500 Projection: UTM Zone 18 (NAD 83)

RECEIVED
06 FEB 2010
Department of Environment and Heritage

1304170



TN
 20°
 Old North
 Nad 83 (Zone 18)
 Magnetic declination 20° W



Legend

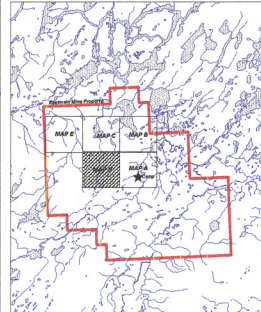
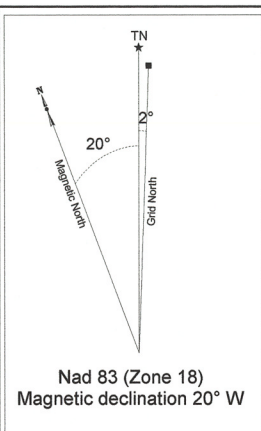
- 2009 Prospector Assay Sample
- ◆ 2009 Geologist Assay Sample
- ▲ 2009 Geologist Whole Rock Sample
- Eastmain Mine Camp Location

GM 67201

 Eastmain Resources Inc.
 Eastmain Mine Project
 2009 Rock Sample
 Location Map
 Map 2C
 Date: 11/02/10
 Author: F. Mendis
 Office: Otago/Quebec
 Map 2C
 Scale: 1:2500
 Projection: UTM Zone 18 (NAD 83)

REÇU AU MINIF
 06 FEV 2011
 Direction du développement minier

1304170



- Legend**
- 2009 Prospector Assay Sample
 - ◆ 2009 Geologist Assay Sample
 - ▲ 2009 Geologist Whole Rock Sample
 - Eastmain Mine Camp Location

GM 67291

EASTMAIN Eastmain Resources Inc.

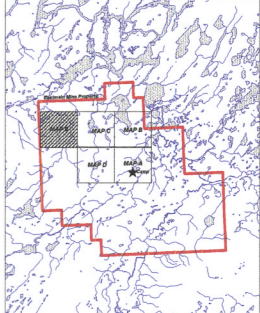
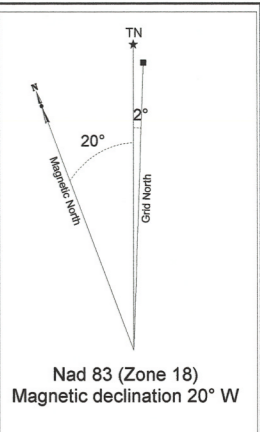
Eastmain Mine Project
2009 Rock Sample Location Map
Map 2D

Date: 11/10/2010
Author: F. Meade
Office: Otago
Map 2D
Scale: 1:2000
Projection: UTM Zone 18 (NAD 83)

0 25 50 100 metres

REGU AU MRNF
06 FEV 2013

1304170



- Legend**
- 2009 Prospector Assay Sample
 - ◆ 2009 Geologist Assay Sample
 - ▲ 2009 Geologist Whole Rock Sample
 - Eastmain Mine Camp Location

GM 67291

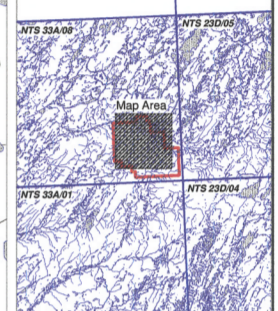
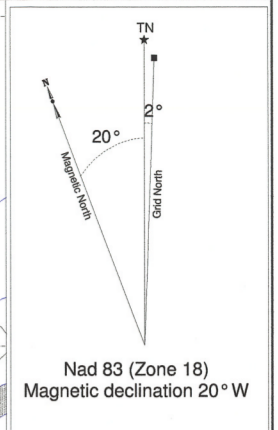
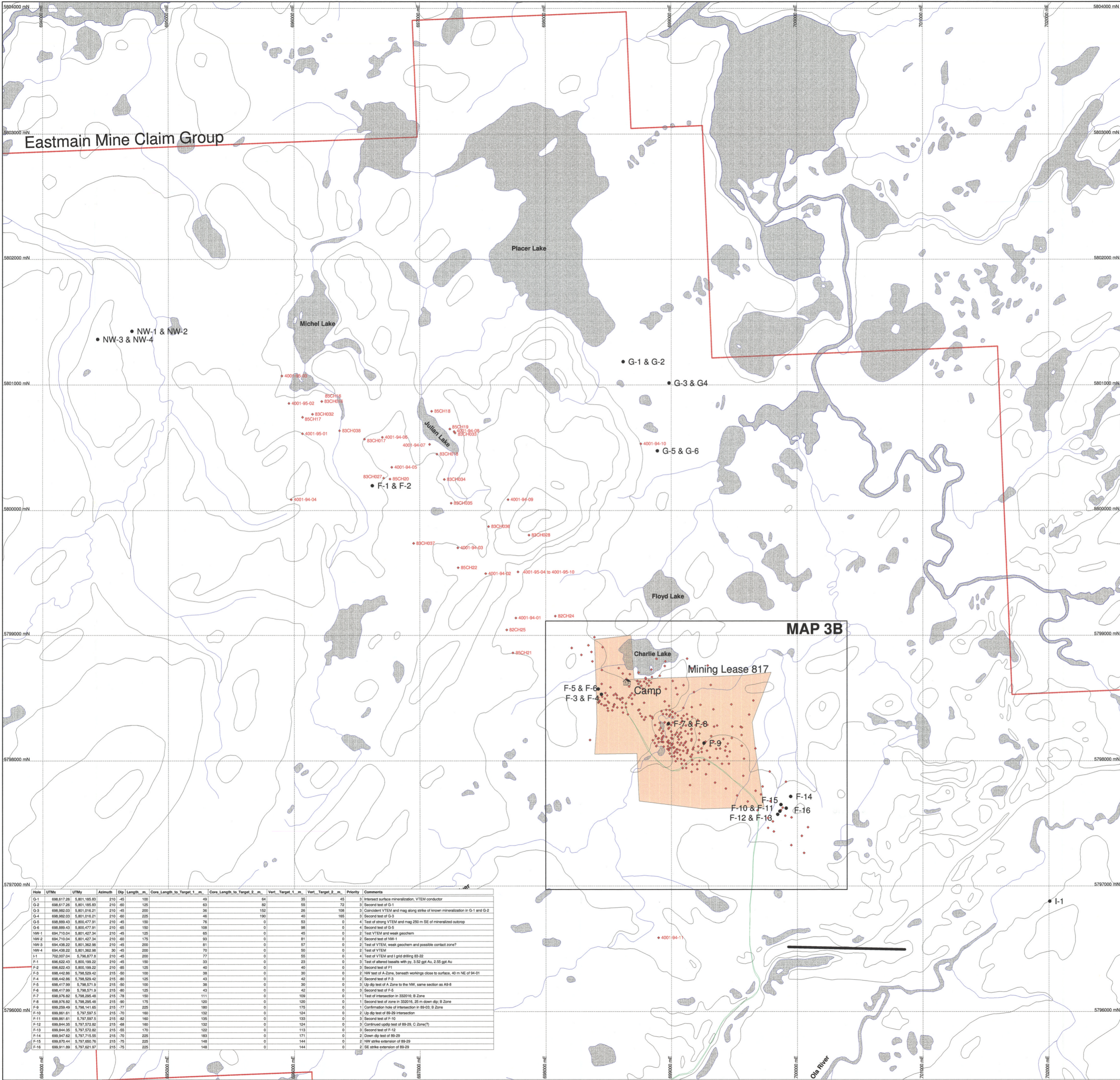
EASTMAN Eastmain Resources Inc.

Eastmain Mine Project
2009 Rock Sample
Location Map
Map 2E

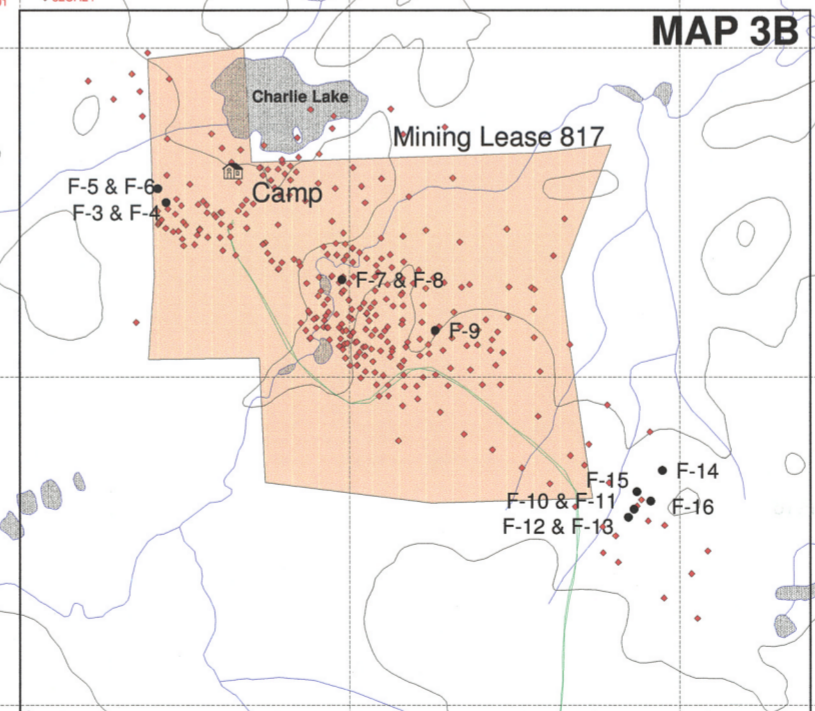
Date: 11/02/10
Author: F. Kende
Office: Osgoode
Map: 2E
Scale: 1:2500 Projection: UTM Zone 18 NAD 83

0 25 50 100 metres

1304170
06 FEB 2010



- Legend**
- F-4 2010 Proposed Drill Hole
 - ◆ 89-29 Historic Drill Hole
 - ◆ Historic Drill Hole (See Map 3B for Hole ID)
 - Winter Road
 - Airstrip
 - Eastmain Mine Camp Location
 - Eastmain Mine Property Boundary
 - 817 Eastmain Mine Mining Lease



Hole	UTMx	UTMy	Azimuth	Dip	Length_m	Core_Length_to_Target_1_m	Core_Length_to_Target_2_m	Vert_Target_1_m	Vert_Target_2_m	Priority	Comments
G-1	698,817.28	5,801,185.83	210	-45	100	49	64	35	45	3	Intersect surface mineralization, VTEM conductor
G-2	698,817.28	5,801,185.83	210	-40	125	63	59	59	72	3	Second test of G-1
G-3	698,862.03	5,801,016.21	210	-45	200	96	152	26	108	3	Coincident VTEM and mag along strike of known mineralization in G-1 and G-2
G-4	698,862.03	5,801,016.21	210	-60	225	46	190	40	165	3	Second test of G-3
G-5	698,869.43	5,800,477.91	210	-45	150	76	0	55	0	4	Test of strong VTEM and mag 250 m SE of mineralized outcrop
G-6	698,869.43	5,800,477.91	210	-45	150	108	0	98	0	4	Second test of G-5
NW-1	694,710.04	5,801,427.34	210	-45	125	65	0	45	0	2	Test VTEM and weak geochem
NW-2	694,710.04	5,801,427.34	210	-60	175	93	0	81	0	2	Second test of NW-1
NW-3	694,438.22	5,801,362.96	210	-45	200	81	0	57	0	2	Test of VTEM, weak geochem and possible contact zone?
NW-4	694,438.22	5,801,362.96	30	-45	200	70	0	50	0	2	Test VTEM
I-1	702,007.04	5,796,877.8	210	-45	200	77	0	55	0	4	Test of VTEM and 1 grid drilling 89-29
F-1	698,622.43	5,800,199.22	210	-45	150	33	0	23	0	3	Test of altered basalts with py. 3.52 gpt Au, 2.55 gpt Ag
F-2	698,622.43	5,800,199.22	210	-45	125	40	0	40	0	3	Second test of F-1
F-3	698,442.86	5,798,529.42	215	-50	100	38	0	30	0	2	NW test of A-Zone, beneath workings close to surface, 40 m NE of 94-01
F-4	698,442.86	5,798,529.42	215	-80	125	43	0	42	0	2	Second test of F-3
F-5	698,417.99	5,798,571.9	215	-50	100	38	0	30	0	3	Up dip test of A-Zone to the NW, same section as A9-8
F-6	698,417.99	5,798,571.9	215	-40	125	43	0	42	0	3	Second test of F-5
F-7	698,976.82	5,798,295.48	215	-70	150	111	0	109	0	1	Test of intersection in 332016, B Zone
F-8	698,976.82	5,798,295.48	215	-90	175	120	0	120	0	1	Second test of zone in 332016, 25 m down dip, B Zone
F-9	699,259.49	5,796,141.46	215	-77	225	180	0	175	0	1	Confirmation hole of intersection in 89-03, B Zone
F-10	699,861.61	5,797,587.5	215	-70	160	132	0	124	0	2	Up dip test of 89-29 intersection
F-11	699,861.61	5,797,587.5	215	-82	160	135	0	133	0	3	Second test of F-10
F-12	699,844.35	5,797,572.82	215	-68	160	132	0	124	0	3	Continued up-dip test of 89-29, C Zone(?)
F-13	699,844.35	5,797,572.82	215	-55	170	132	0	113	0	3	Second test of F-12
F-14	699,947.62	5,797,715.55	215	-70	225	183	0	171	0	2	Down dip test of 89-29
F-15	699,870.44	5,797,650.76	215	-75	225	148	0	144	0	2	NW strike extension of 89-29
F-16	699,911.89	5,797,621.97	215	-75	225	148	0	144	0	2	SE strike extension of 89-29

GM 6 7 2 9 1

Eastmain Resources Inc.

Eastmain Mine Project
2010 Proposed DDH Map
Map 3A

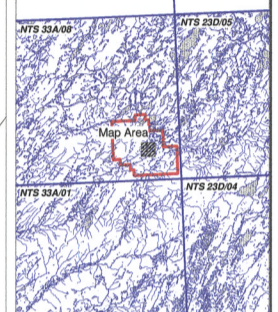
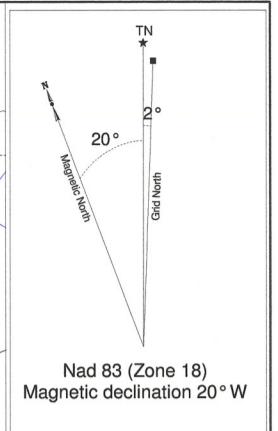
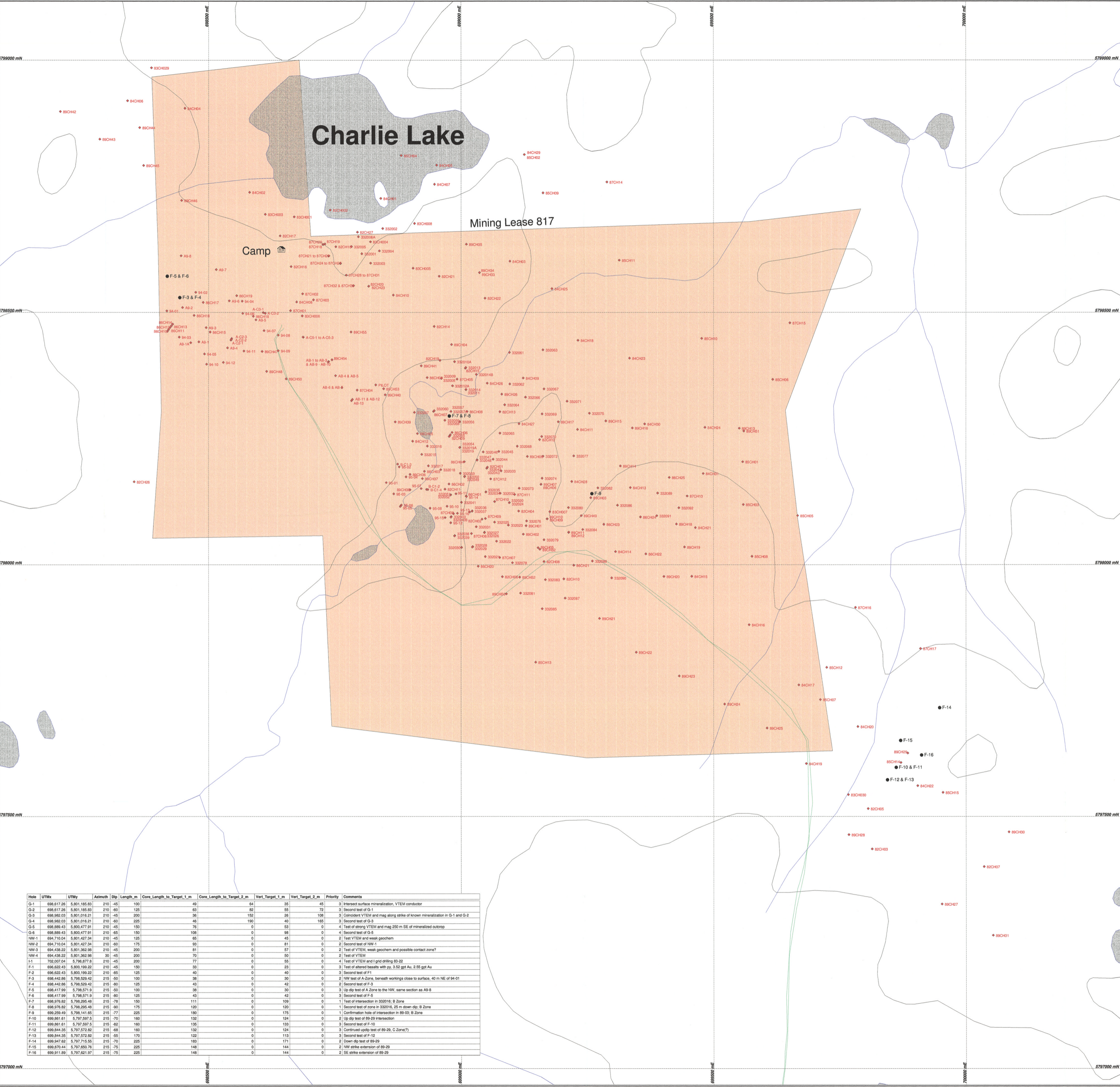
Scale: 1:5000 (Projection: UTM Zone 18 NAD 83)

Map 3A

0 125 250 500
metres

0 6 FEB 2010

1304170



- Legend**
- F-4 2010 Proposed Drill Hole
 - ◆ 89-29 Historic Drill Hole
 - Winter Road
 - Airstrip
 - Eastmain Mine Camp Location
 - Eastmain Mine Property Boundary
 - 817 Eastmain Mine Mining Lease

Hole	UTMx	UTMy	Azimuth	Dip	Length_m	Core_Length_to_Target_1_m	Core_Length_to_Target_2_m	Vert_Target_1_m	Vert_Target_2_m	Priority	Comments
G-1	686,617.28	5,801,185.83	210	-45	100	49	64	35	45	3	Intersect surface mineralization, VTEM conductor
G-2	686,617.28	5,801,185.83	210	-60	125	63	85	55	72	3	Second test of G-1
G-3	686,982.03	5,801,016.21	210	-45	200	36	152	26	108	3	Corroborate VTEM and mag along strike of known mineralization in G-1 and G-2
G-4	686,982.03	5,801,016.21	210	-60	225	46	190	40	165	3	Second test of G-3
G-5	686,889.43	5,800,477.91	210	-45	150	76	0	53	0	4	Test of strong VTEM and mag 250 m SE of mineralized outcrop
G-6	686,889.43	5,800,477.91	210	-60	150	108	0	98	0	4	Second test of G-5
NW-1	684,710.04	5,801,427.34	210	-45	125	65	0	45	0	2	Test VTEM and weak geochem
NW-2	684,710.04	5,801,427.34	210	-60	175	0	0	81	0	2	Second test of NW-1
NW-3	684,438.22	5,801,362.98	210	-45	200	81	0	57	0	2	Test of VTEM, weak geochem and possible contact zone?
NW-4	684,438.22	5,801,362.98	210	-60	200	70	0	50	0	2	Test of VTEM
H-1	702,007.04	5,798,871.61	210	-45	200	77	0	55	0	4	Test of VTEM and 1 grid drilling 63-22
F-1	686,822.43	5,800,199.22	210	-45	150	33	0	23	0	3	Test of altered basalts with py, 3.52 gpt Au, 2.55 gpt Au
F-2	686,822.43	5,800,199.22	210	-60	125	40	0	40	0	3	Second test of F-1
F-3	686,442.86	5,798,529.42	215	-50	100	38	0	30	0	2	NW test of A-Zone, beneath workings close to surface, 40 m NE of 94-01
F-4	686,442.86	5,798,529.42	215	-60	125	43	0	42	0	2	Second test of F-3
F-5	686,417.99	5,798,571.9	215	-50	100	38	0	30	0	3	Up dip test of A-Zone to the NW, same section as A9-8
F-6	686,417.99	5,798,571.9	215	-60	125	43	0	42	0	3	Second test of F-5
F-7	686,976.82	5,798,295.48	215	-78	150	111	0	109	0	1	Test of intersection in 332016, B Zone
F-8	686,976.82	5,798,295.48	215	-90	175	120	0	120	0	1	Second test of zone in 332016, 25 m down dip; B Zone
F-9	686,259.49	5,798,141.85	215	-77	225	130	0	175	0	1	Confirmation hole of intersection in 89-29, C Zone
F-10	686,981.61	5,797,597.5	215	-70	160	132	0	124	0	2	Up dip test of 89-29 intersection
F-11	686,981.61	5,797,597.5	215	-60	150	135	0	133	0	2	Second test of F-10
F-12	689,844.35	5,797,572.82	215	-68	160	132	0	124	0	3	Continued up dip test of 89-29, C Zone(?)
F-13	689,844.35	5,797,572.82	215	-55	170	122	0	113	0	3	Second test of F-12
F-14	686,947.82	5,797,715.55	215	-70	225	163	0	171	0	2	Down dip test of 89-29
F-15	686,870.44	5,797,655.76	215	-75	225	148	0	144	0	2	NW strike extension of 89-29
F-16	686,911.89	5,797,621.97	215	-75	225	148	0	144	0	2	SE strike extension of 89-29

GM 67281

Eastmain Resources Inc.

Eastmain Mine Project
2010 Proposed DDH Map
Map 3B

Scale: 1:2000 Projection: UTM Zone 18 NAD 83

0 25 50 100 meters

REC AU MRNF
06 FEV 2013
Division de Développement minier

1301170