

LEGEND

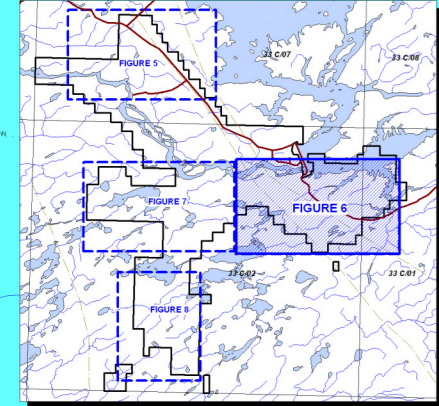
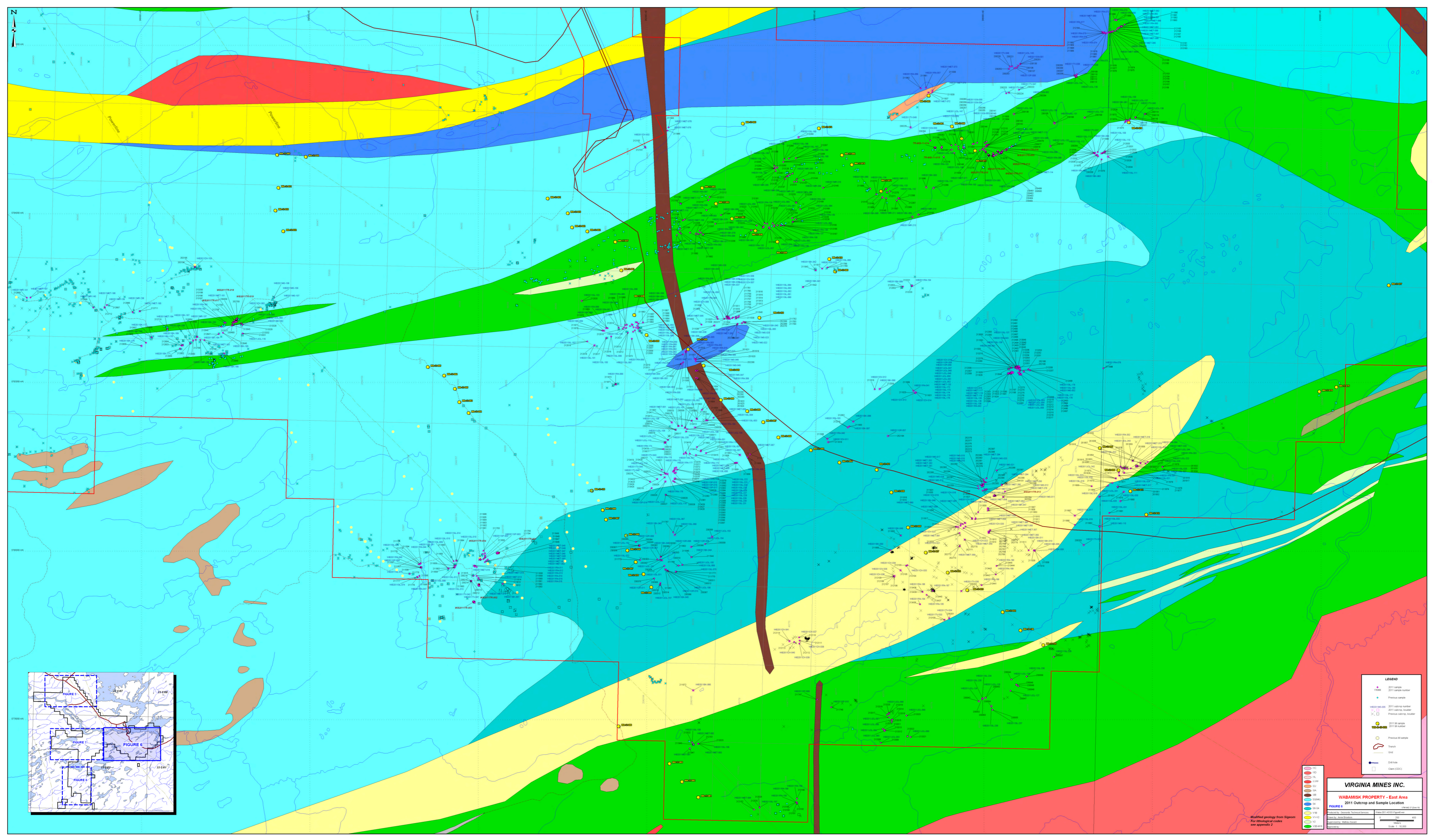
- 2011 sample
- 2011 sample number
- Previous sample
- 2011 outcrop number
- Previous outcrop number
- 2011 outcrop boundary
- Previous outcrop boundary
- 2011 SS sample
- 2011 SS number
- Previous SS sample
- Trench
- Grid
- Drill hole
- Claim (CDC)

**Geological units from Spence
For lithological codes
see appendix 2**

- ITC
- ITD
- ITL
- ITP
- ITJ
- ITK
- ITM
- ITN
- ITO
- ITP
- ITQ
- ITR
- ITS
- ITV
- ITW
- ITX
- ITY
- ITZ

VIRGINIA MINES INC.
WABAMSK PROPERTY - North Area
FIGURE 5 2011 Outcrop and Sample Location

Prepared by: Geospatial Technical Services
 Prepared by: Armin Gholami
 Approved by: Andrea Goussard
 Date: 2011-07-15
 Scale: 1 : 50,000



LEGEND

- 2011 sample location
- 2011 sample location
- Previous sample
- Previous sample
- 2011 outcrop location
- 2011 outcrop location
- Previous outcrop location
- Previous outcrop location
- 2011 SE sample
- Previous SE sample
- Trench
- Grit
- DRB hole
- Core (COC)

VIRGINIA MINES INC.

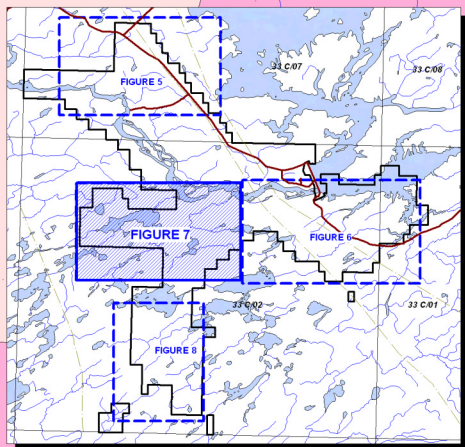
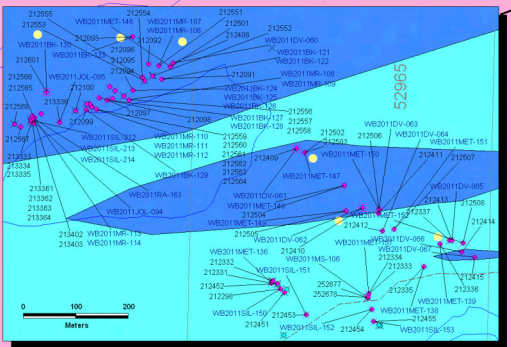
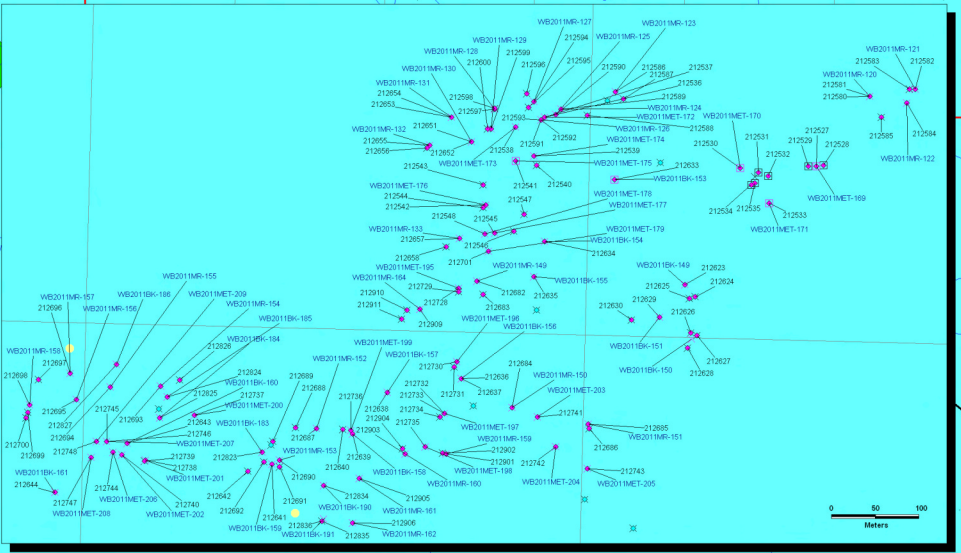
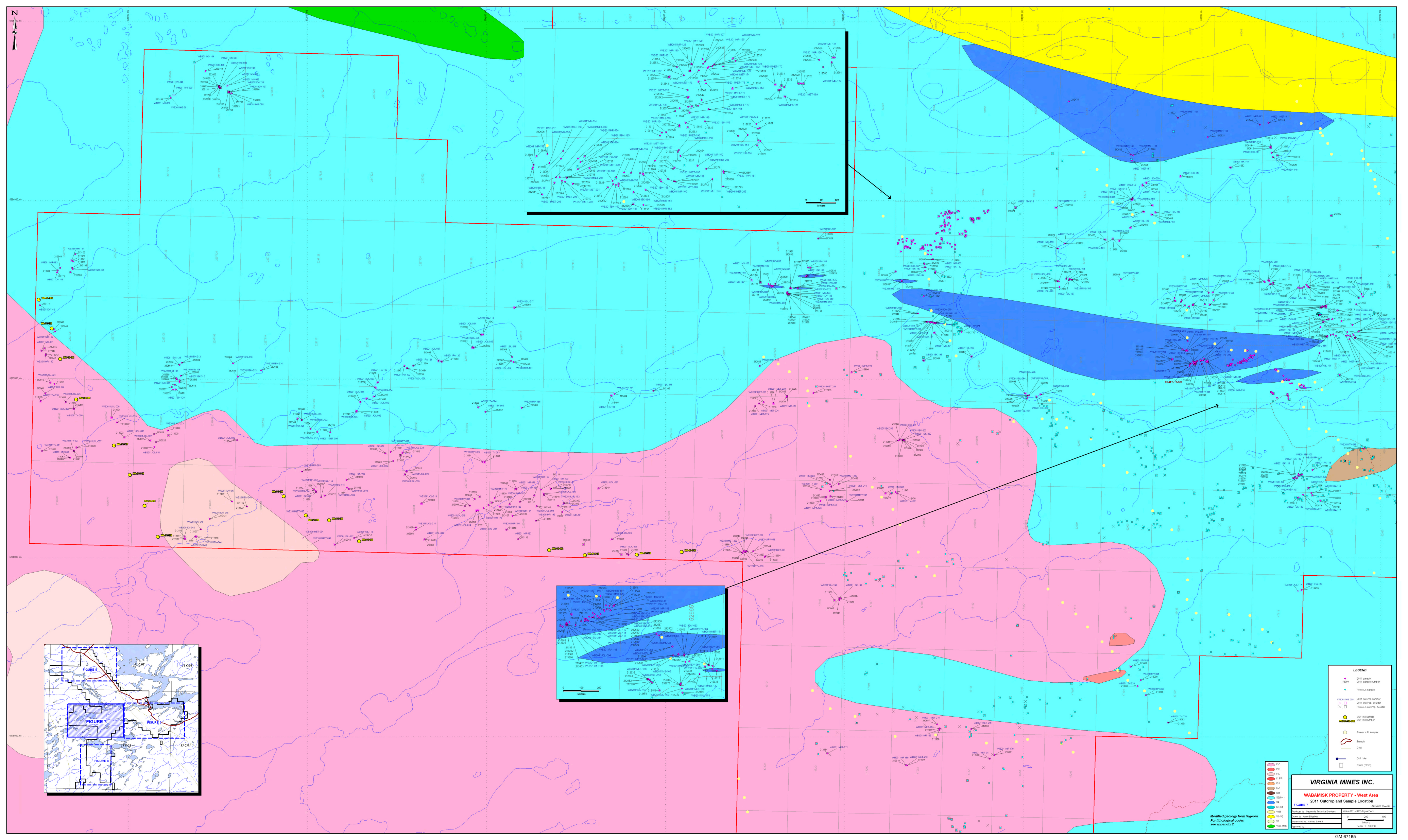
WABAMISK PROPERTY - East Area

2011 Outcrop and Sample Location

FIGURE 6

Modified geology from Figure 5
For lithological codes see appendix 2

Scale: 1:50,000



- LEGEND**
- 2011 sample
 - 2011 sample number
 - Previous sample
 - 2011 outcrop number
 - 2011 outcrop, double
 - 2011 outcrop, double
 - 2011 sample
 - 2011 sample number
 - Previous B1 sample
 - Touch
 - Grid
 - Drill hole
 - Claim (CDC)

VIRGINIA MINES INC.

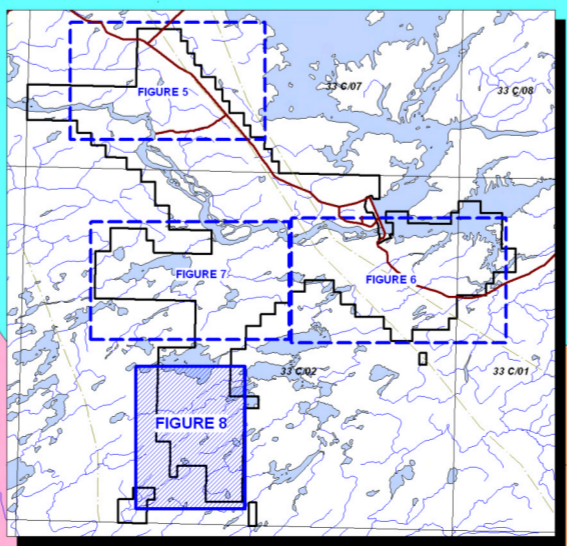
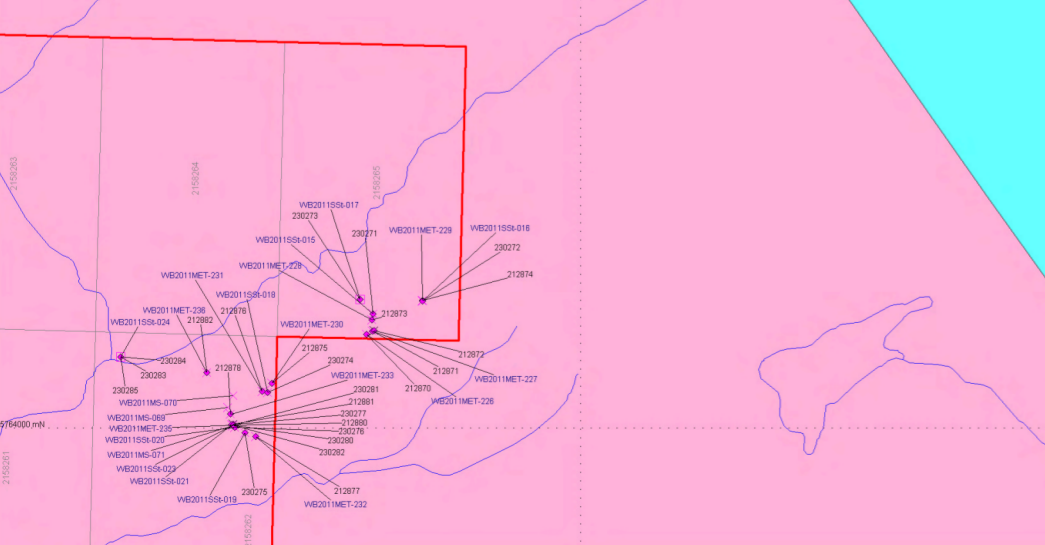
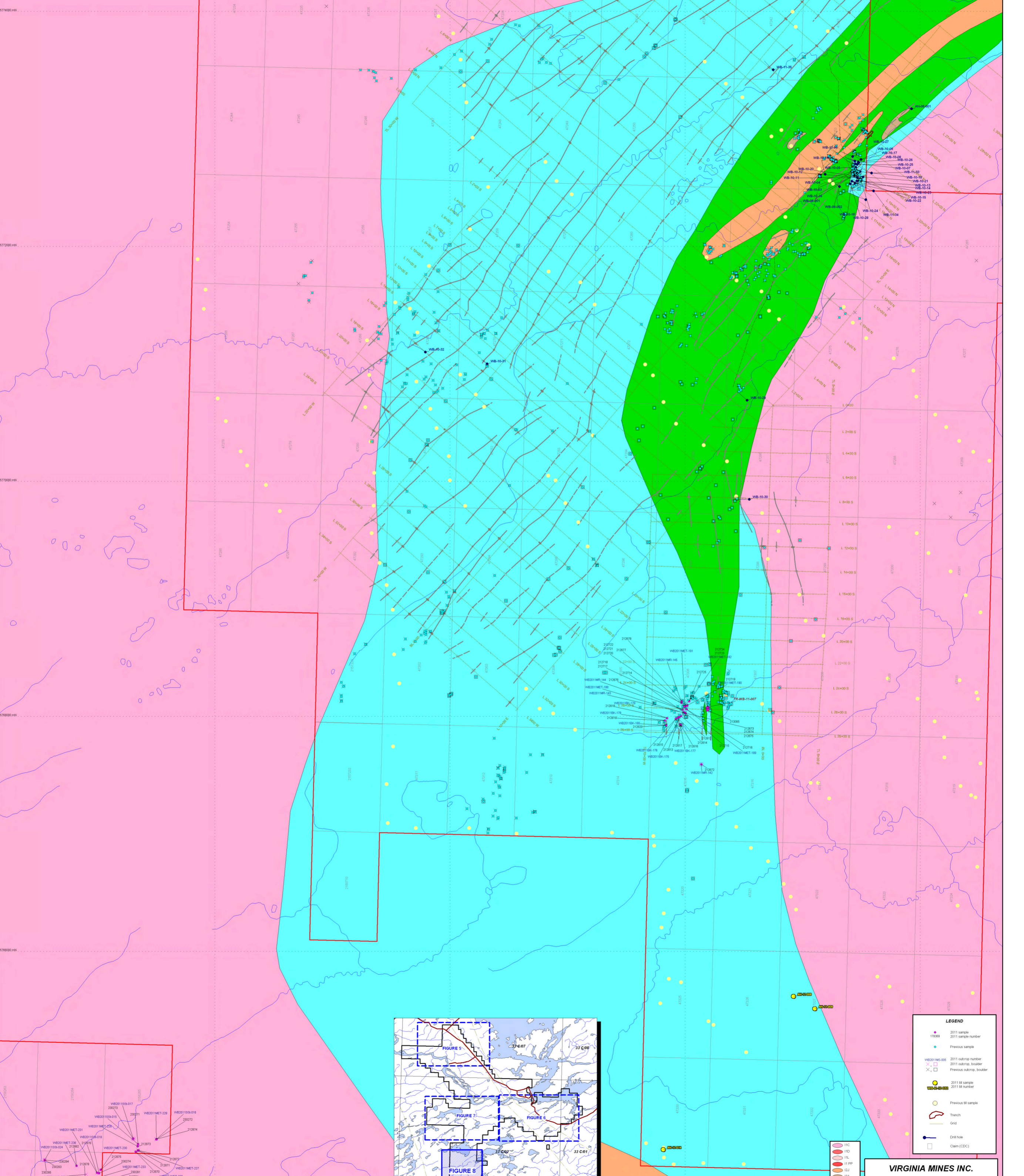
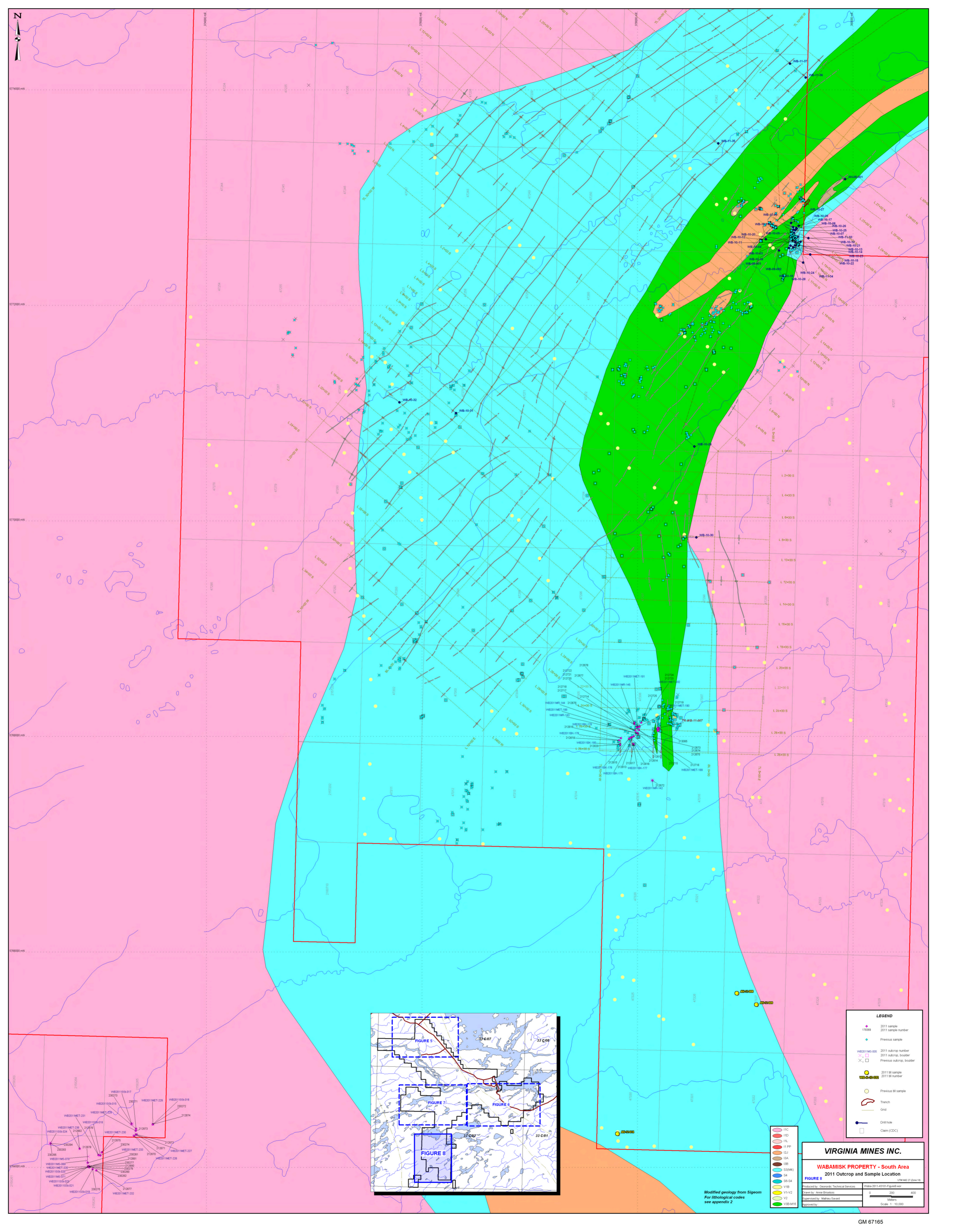
WABAMISK PROPERTY - West Area

FIGURE 7
2011 Outcrop and Sample Location

Modified geology from Stgeorn
see appendix 2

Scale: 1:50,000

© 2011 Virginia Mines Inc.



LEGEND

- 2011 sample
- 2011 sample number
- Previous sample
- 2011 outcrop number
- 2011 outcrop, boulder
- Previous outcrop, boulder
- 2011 sample
- 2011 sample number
- Previous sample
- Trench
- Grid
- Drill hole
- Claim (CDC)

VIRGINIA MINES INC.

WABAMISK PROPERTY - South Area

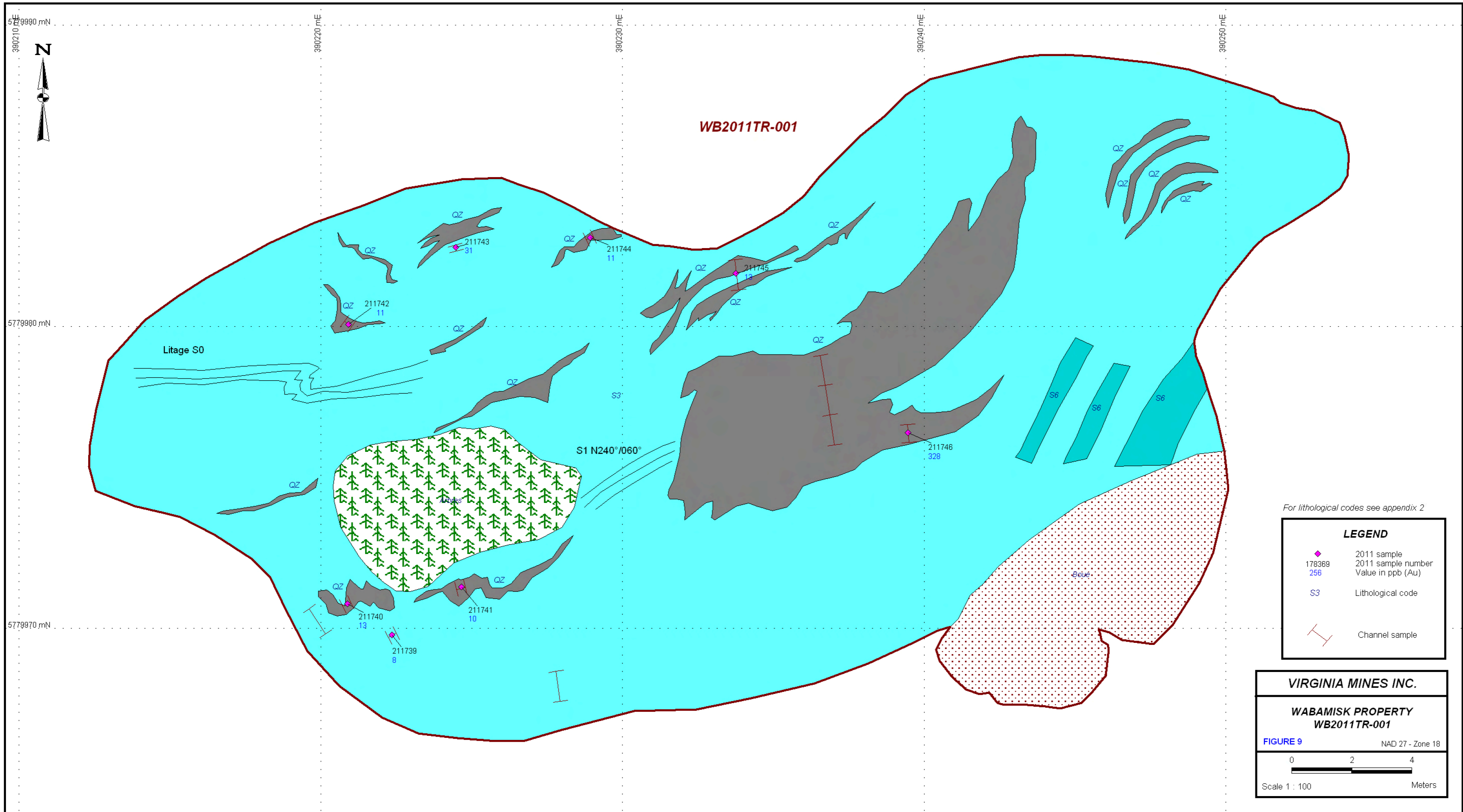
2011 Outcrop and Sample Location

FIGURE 8

Produced by: Geomatics Technical Services
 Drawn by: Anne Broadbent
 Supervised by: Matthew Davant
 Approved by: [Signature]

Virginia Mines Inc. 2011
 Wabamisk-2011-43101-Figure8.mxd
 0 200 400
 Meters
 Scale 1 : 10,000

Modified geology from Sigom
 For lithological codes
 see appendix 2



For lithological codes see appendix 2

LEGEND	
	2011 sample
	2011 sample number
	Value in ppb (Au)
	Lithological code
	Channel sample

VIRGINIA MINES INC.

WABAMISK PROPERTY

WB2011TR-001

FIGURE 9 NAD 27 - Zone 18

0 2 4
Meters

Scale 1 : 100



390000 mE

390010 mE

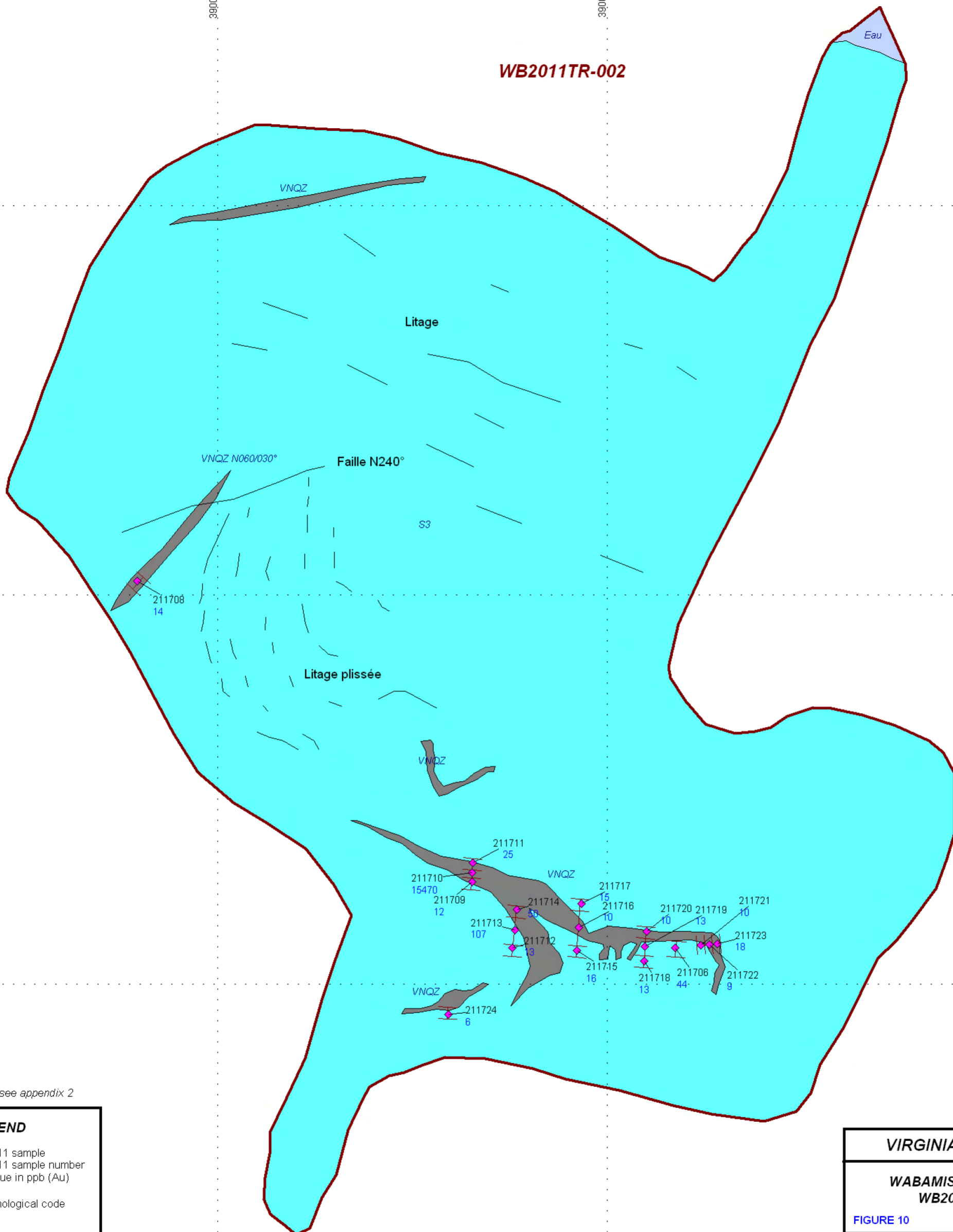
390020 mE

WB2011TR-002

5779610 mN

5779600 mN

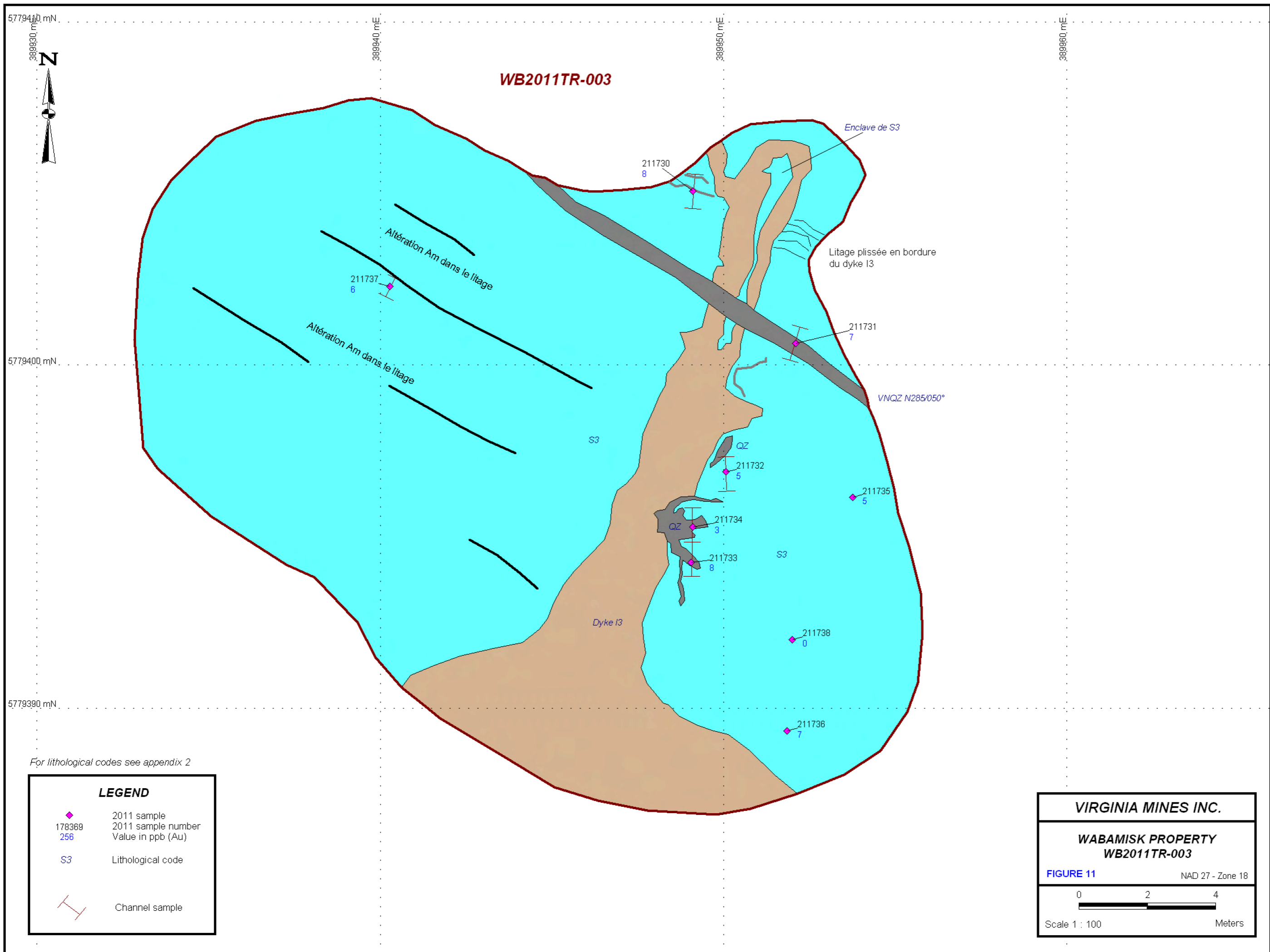
5779590 mN



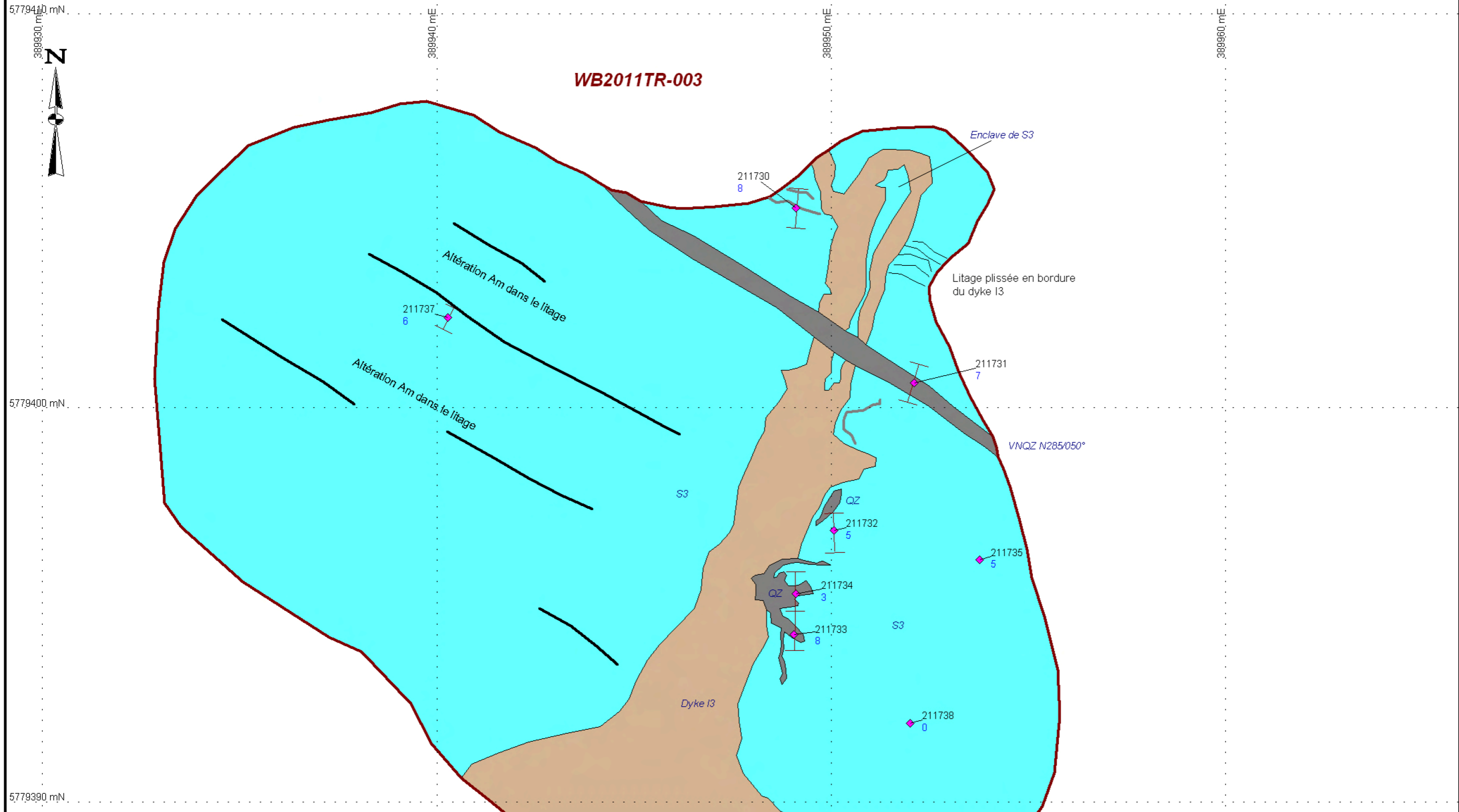
For lithological codes see appendix 2

LEGEND	
	2011 sample
178369	2011 sample number
256	Value in ppb (Au)
S3	Lithological code
	Channel sample

VIRGINIA MINES INC.	
WABAMISK PROPERTY WB2011TR-002	
FIGURE 10	NAD 27 - Zone 18
Scale 1 : 100	Meters



WB2011TR-003

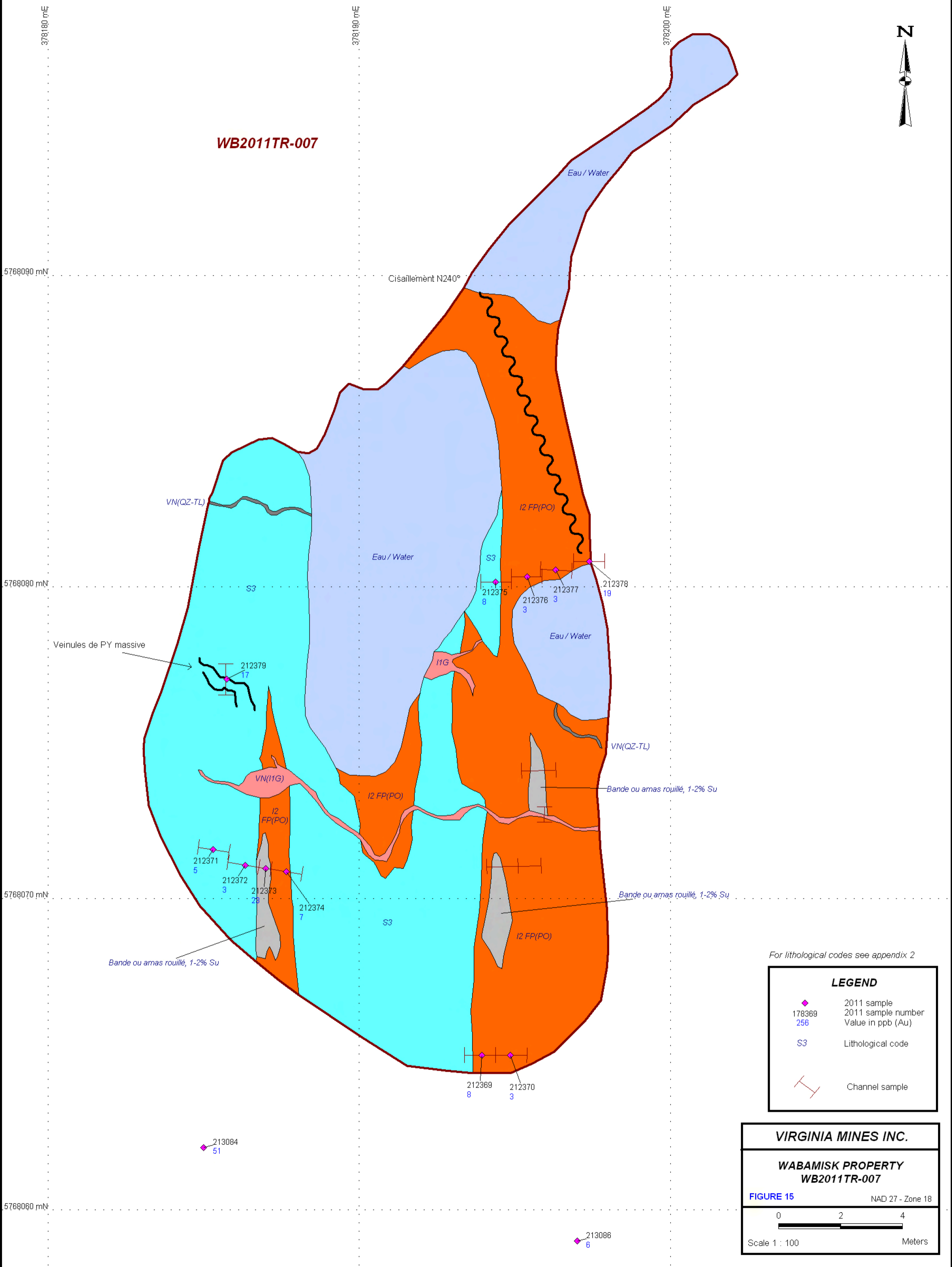


For lithological codes see appendix 2

LEGEND	
◆	2011 sample
178389	2011 sample number
256	Value in ppb (Au)
S3	Lithological code
	Channel sample

VIRGINIA MINES INC.	
WABAMISK PROPERTY	
WB2011TR-003	
FIGURE 11	NAD 27 - Zone 18
Scale 1 : 100	Meters

WB2011TR-007



For lithological codes see appendix 2

LEGEND	
	2011 sample
178369	2011 sample number
256	Value in ppb (Au)
S3	Lithological code
	Channel sample

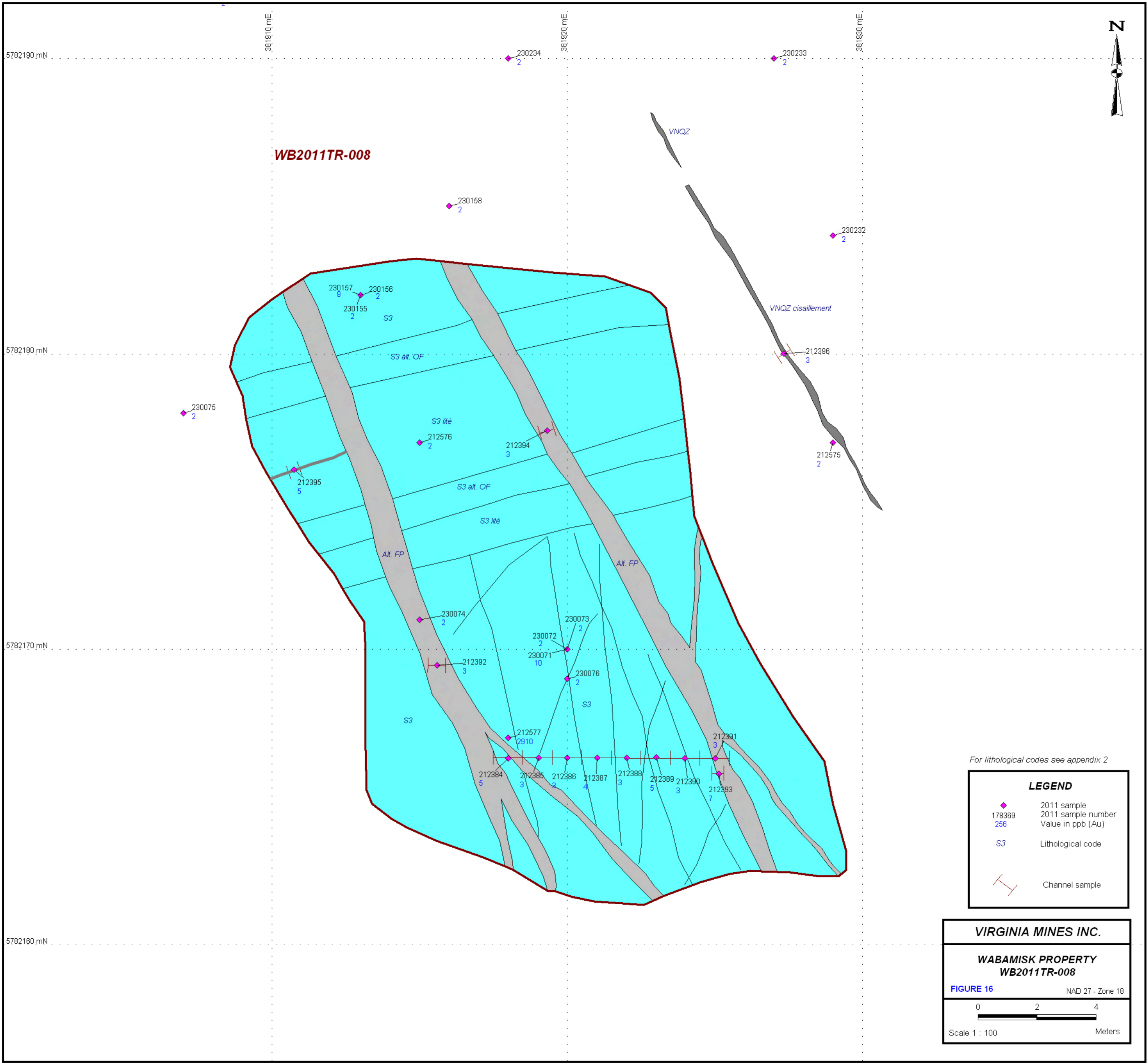
VIRGINIA MINES INC.

WABAMISK PROPERTY
WB2011TR-007

FIGURE 15 NAD 27 - Zone 18

0 2 4

Scale 1 : 100 Meters



WB2011TR-008

For lithological codes see appendix 2

LEGEND	
	2011 sample
	2011 sample number
	Value in ppb (Au)
	Lithological code
	Channel sample

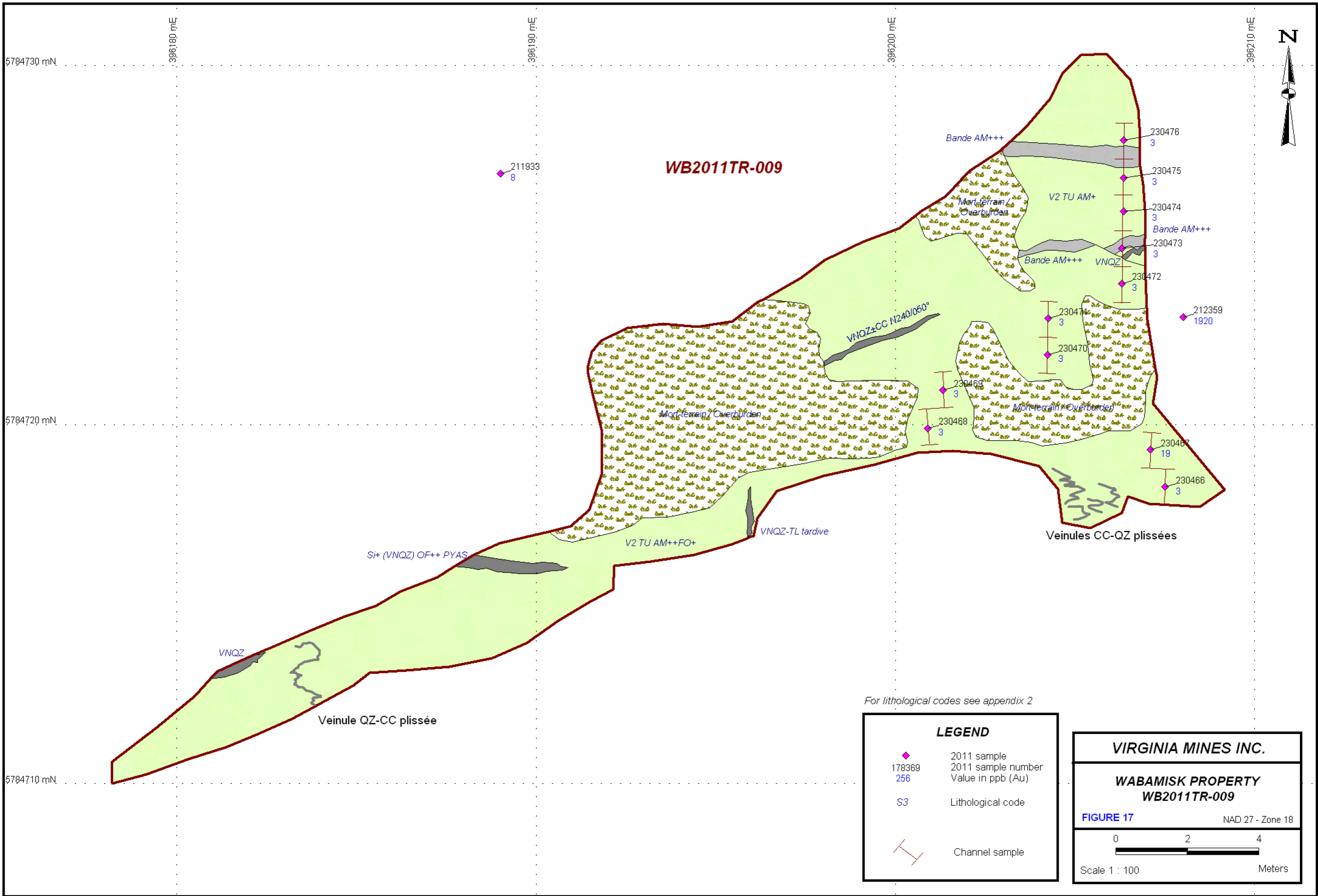
VIRGINIA MINES INC.

WABAMISK PROPERTY
WB2011TR-008

FIGURE 16 NAD 27 - Zone 18

0 2 4

 Scale 1 : 100 Meters



5784710 mN

398050 mE

398060 mE

398070 mE

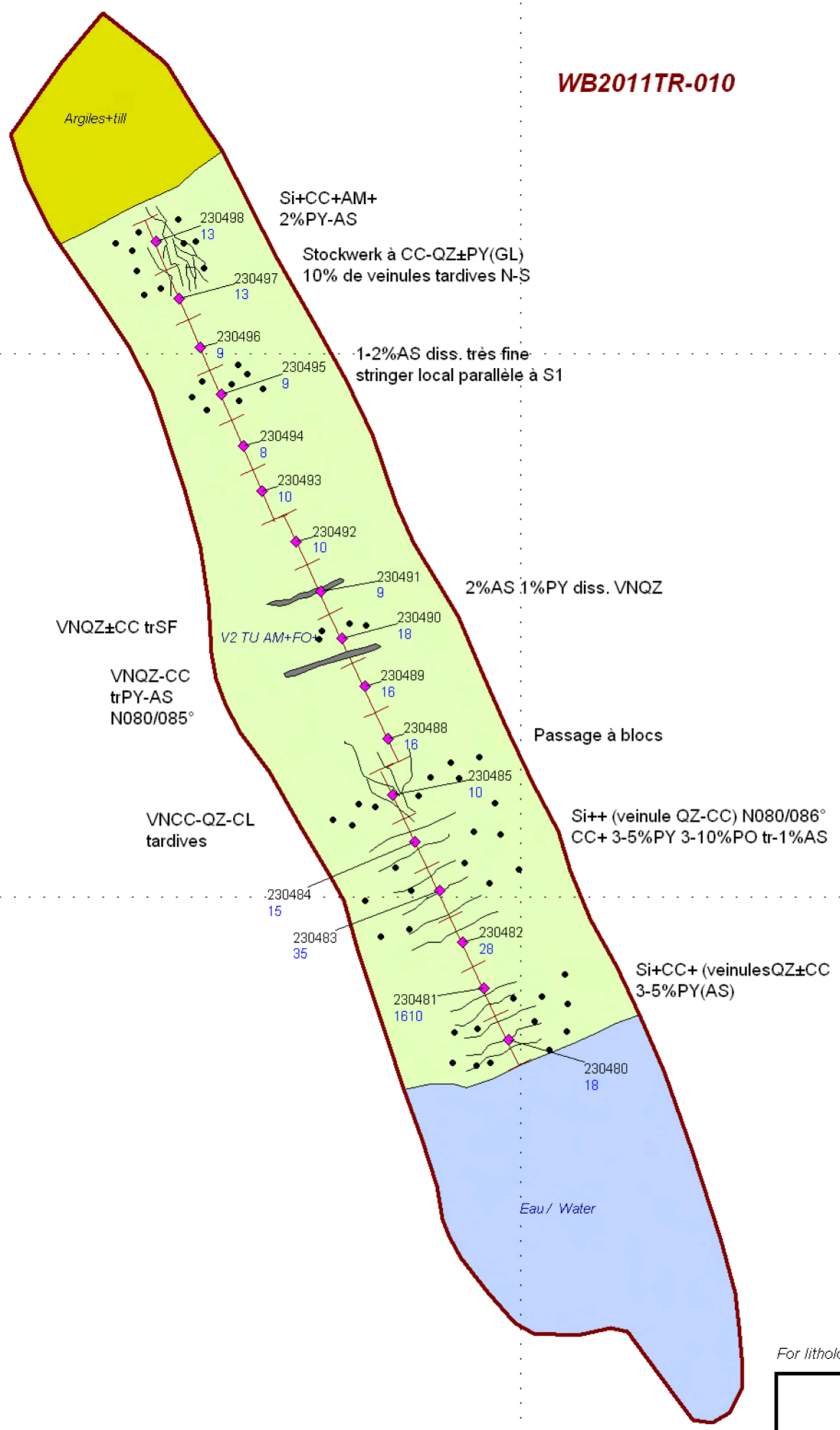


WB2011TR-010

5784700 mN

5784690 mN

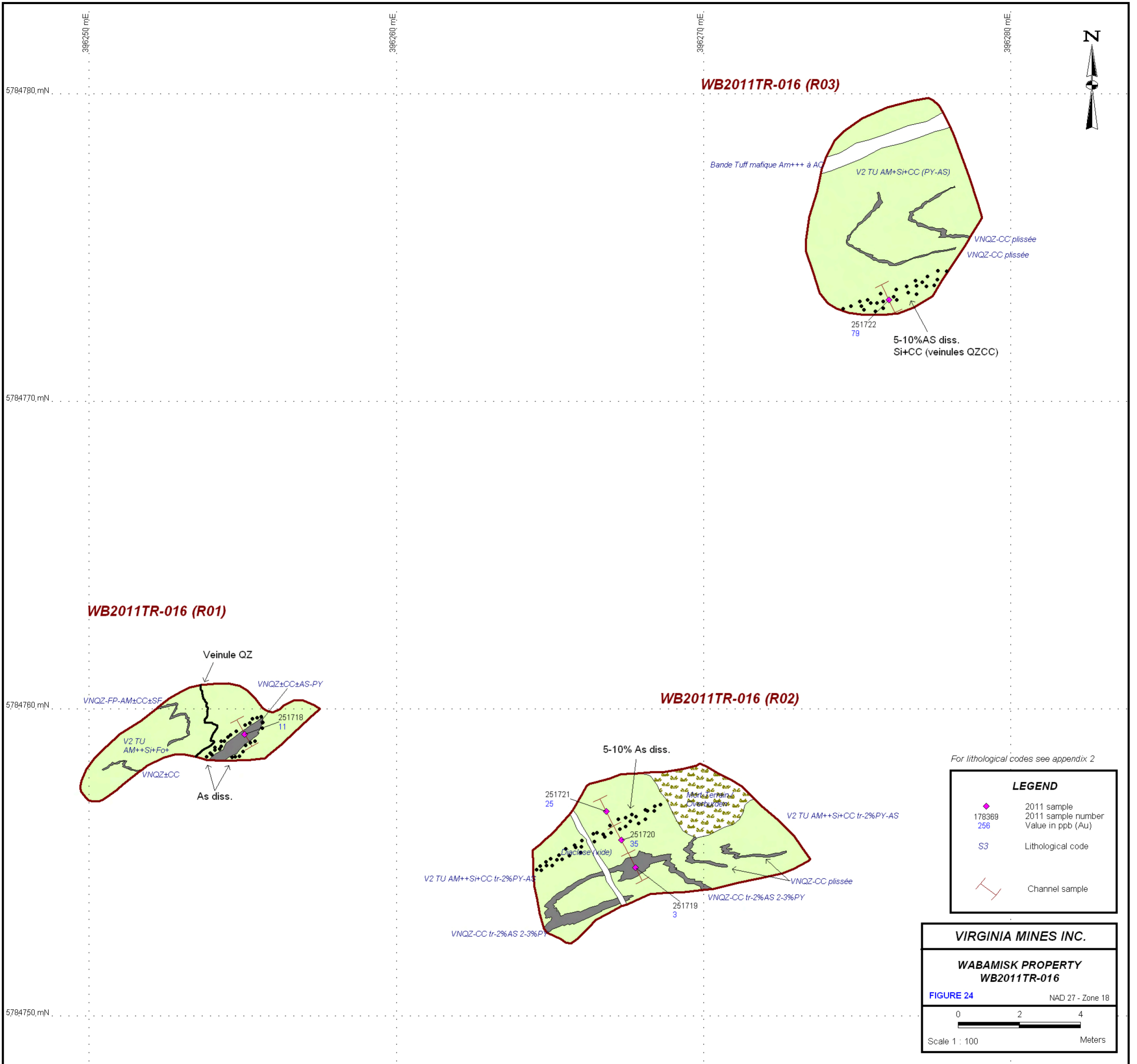
5784680 mN

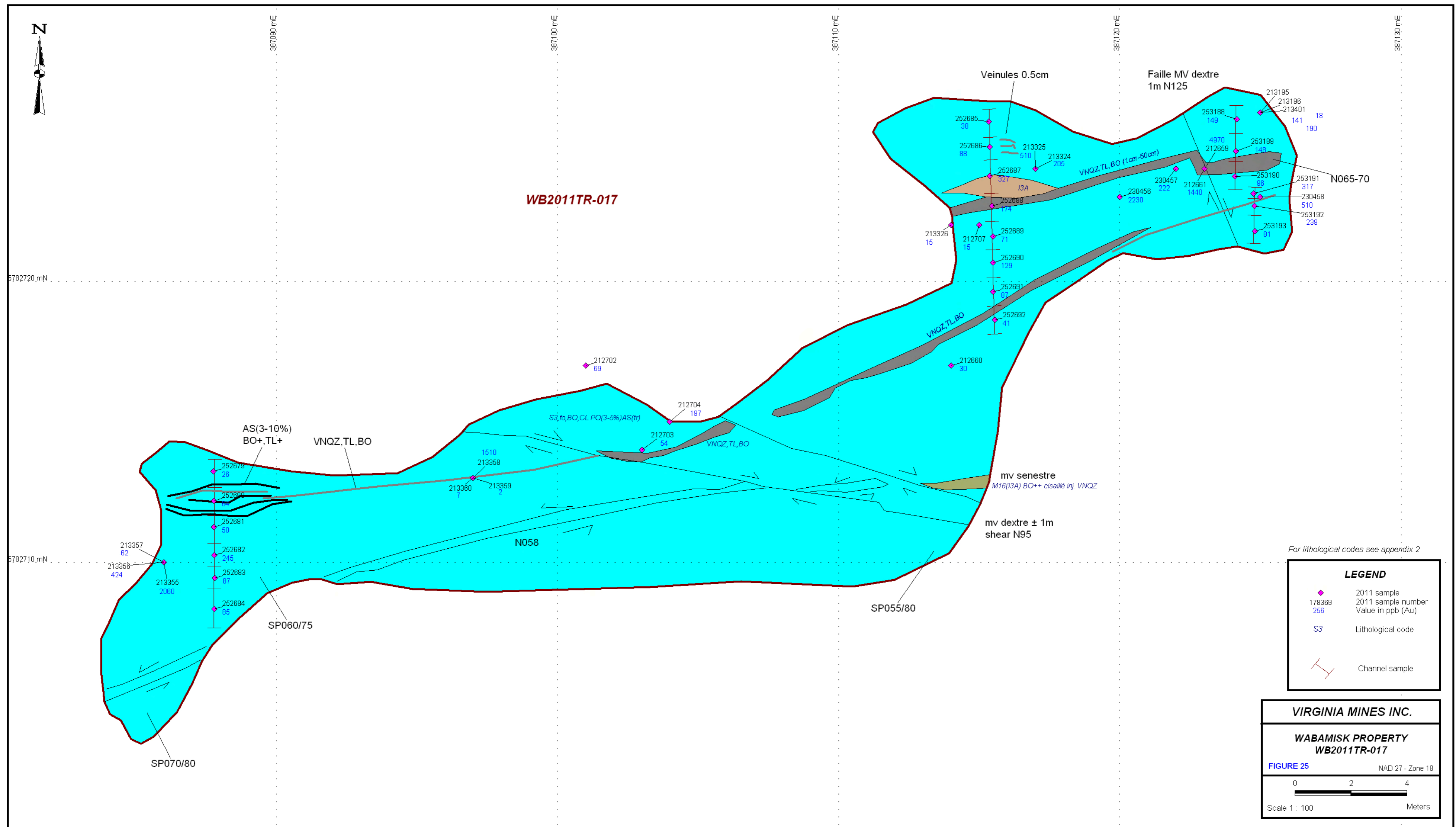


For lithological codes see appendix 2

LEGEND	
◆	2011 sample
178369	2011 sample number
256	Value in ppb (Au)
S3	Lithological code
T	Channel sample

VIRGINIA MINES INC.	
WABAMISK PROPERTY	
WB2011TR-010	
FIGURE 18	NAD 27 - Zone 18
Scale 1 : 100	Meters





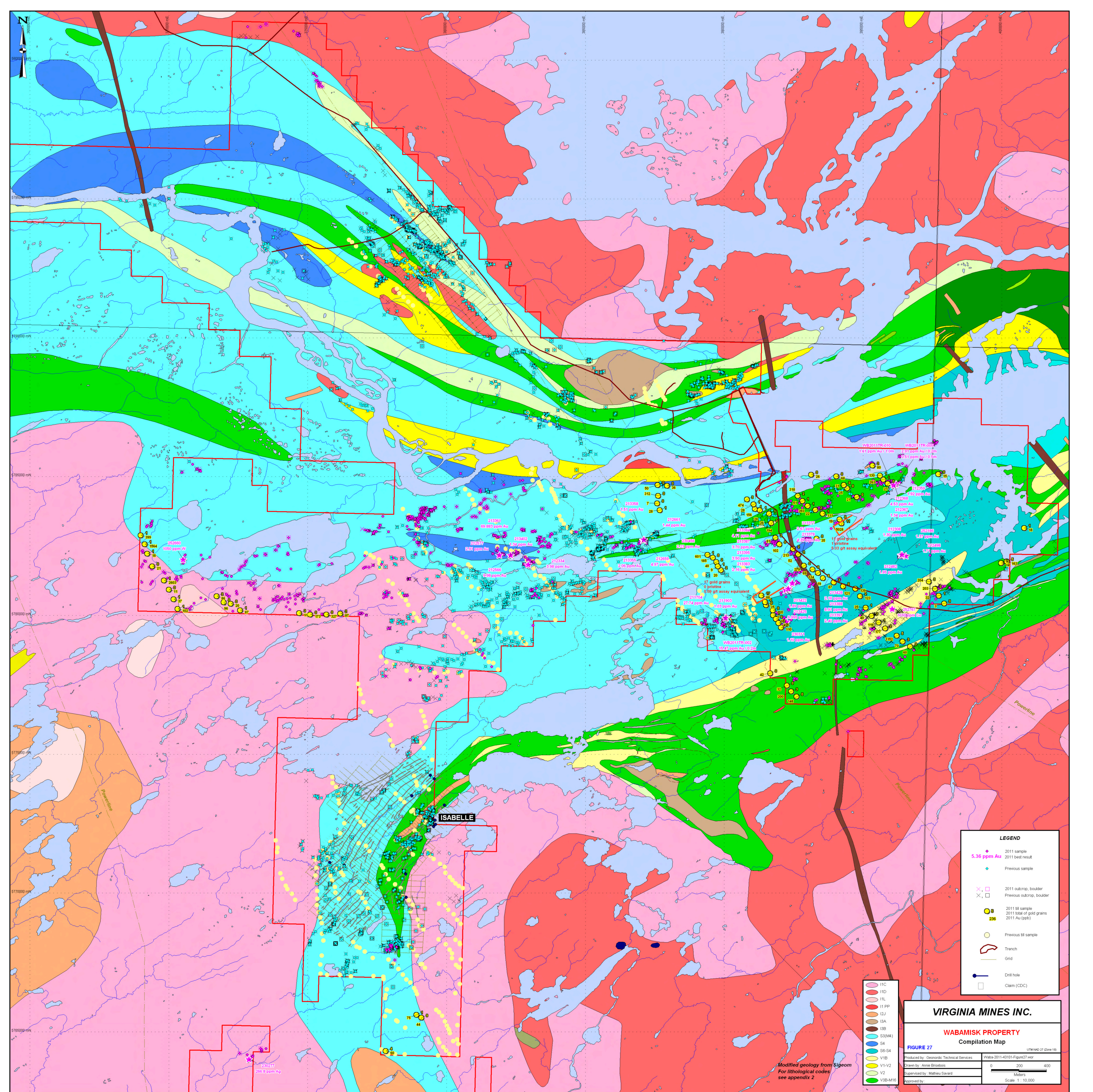
LEGEND	
	2011 sample
178369	2011 sample number
256	Value in ppb (Au)
S3	Lithological code
	Channel sample

VIRGINIA MINES INC.

WABAMISK PROPERTY
WB2011TR-017

FIGURE 25 NAD 27 - Zone 18

0 2 4
Scale 1 : 100 Meters



576000 mN
576500 mN
577000 mN
577500 mN
578000 mN

380000 mE
390000 mE
400000 mE
410000 mE
420000 mE
430000 mE
440000 mE

LEGEND

- ◆ 2011 sample
5.36 ppm Au
◆ 2011 best result
- ◆ Previous sample
- ✕ Previous outcrop, boulder
- ✕ Previous outcrop, boulder
- 2011 fill sample
236
2011 total of gold grains
2011 Au (ppb)
- Previous fill sample
- Trench
- Grid
- Drill hole
- Claim (CDC)

- I1C
- I1D
- I1L
- I1PP
- I2J
- I3A
- I3B
- I3C
- S2(M)
- S4
- S6-S4
- V1B
- V1-V2
- V2
- V3B-M16

VIRGINIA MINES INC.

WABAMISK PROPERTY
Compilation Map

FIGURE 27 UTM MAD 27 (Zone 18)

Produced by: Geomatic Technical Services Waba-2011-43101-Fig27.mxd
 Drawn by: Anne Bricebois
 Supervised by: Mathieu Savard
 Approved by:

0 200 400
Meters
Scale 1 : 10,000

Modified geology from Sigom
For lithological codes
see appendix 2