

Figure 4.2 – Claims in the east part (A, B and C blocks) of the Pivert-Rose property.

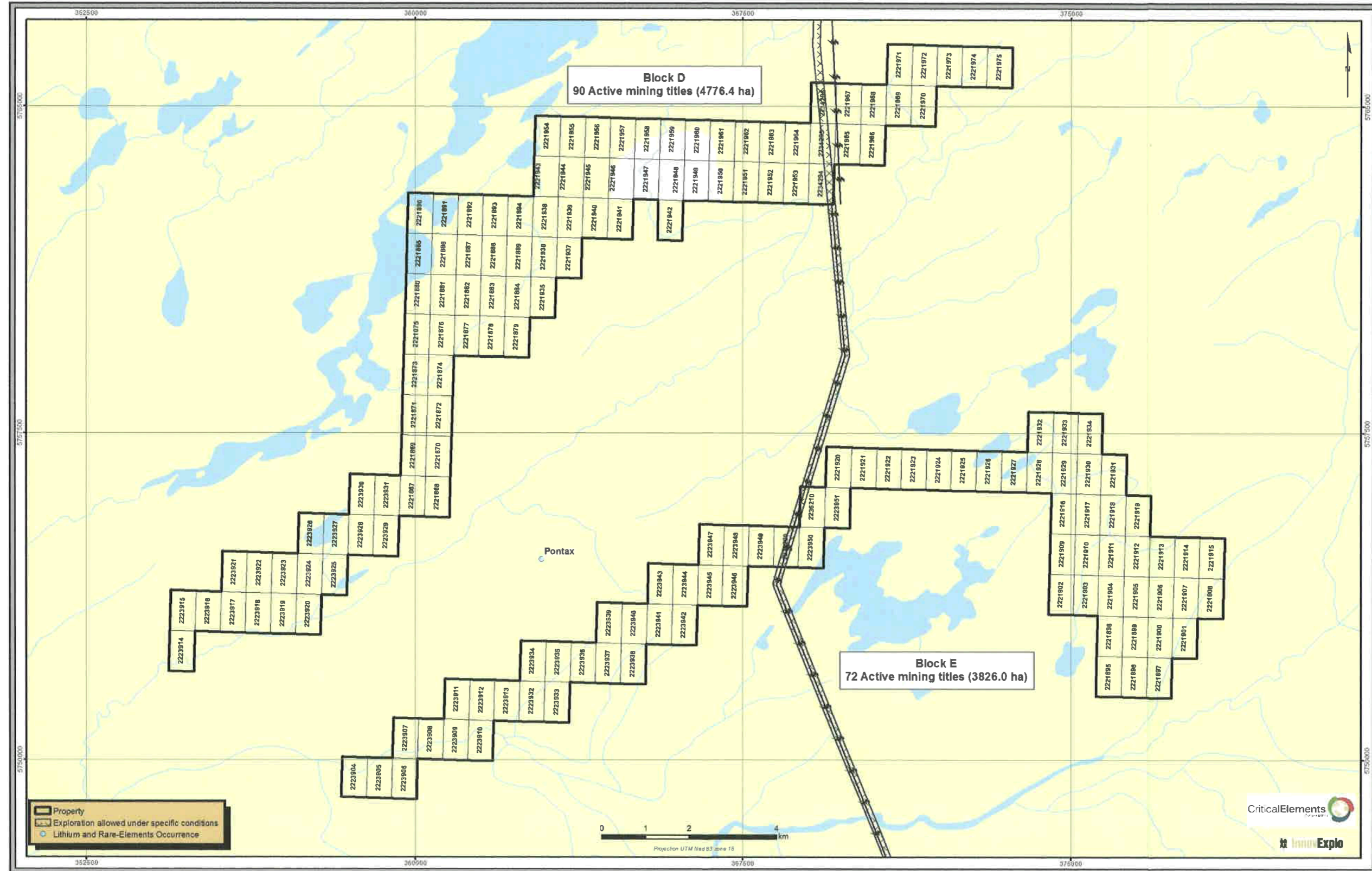


Figure 4.3 – Claims in the west part (D and E blocks) of the Pivert-Rose property.

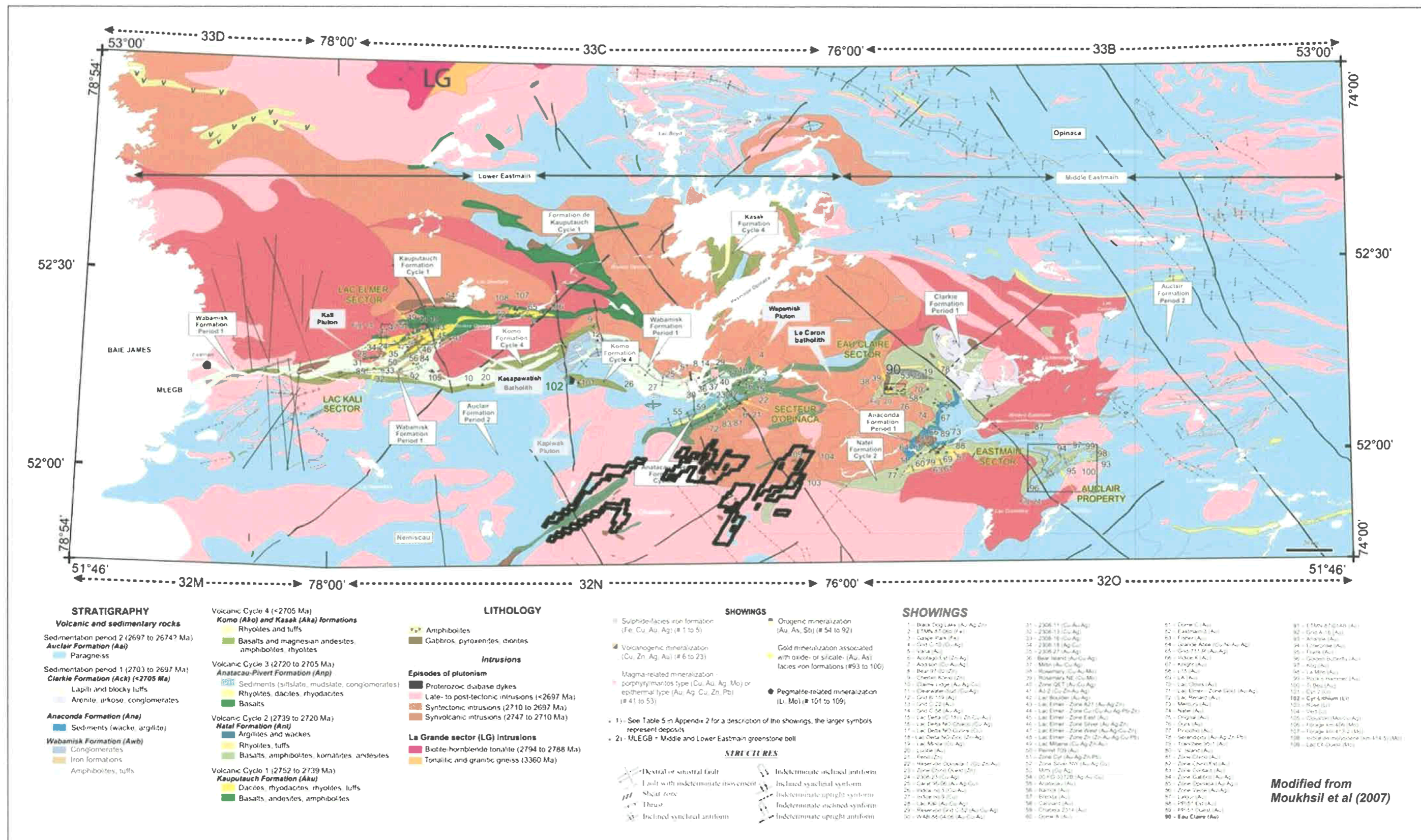


Figure 7.2 – Map showing the location of the Pivert-Rose property within the geological setting of the Middle and Lower Eastmain belt according to Moukhsil et al., 2007. The approximate location of the Pivert-Rose property is shown in black. The distortion when compared to other figures in this report is due to the different projection used by Moukhsil et al. (2007).

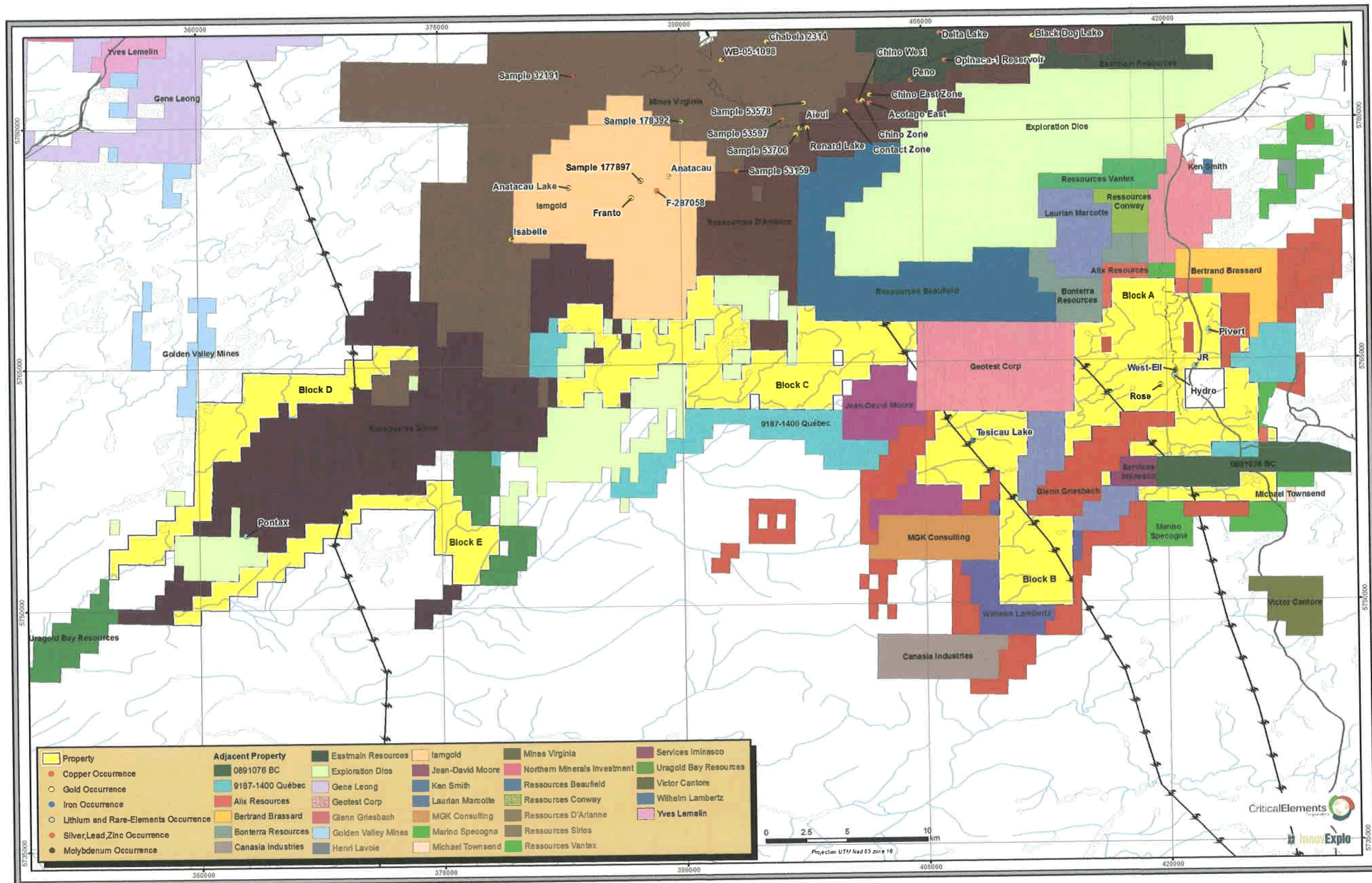


Figure 23.2 – Properties and mineral occurrences in the vicinity of the Pivert-Rose property according to GESTIM and SIGEOM.