

Projet (Project): HOTISH

— Cheminement (Traverses)
 □ Limites de la propriété (Property limits)
 0047692 Numéro de cellule (CDC) (Claim number (MDC))

0 1 2 3 4 km
 Échelle (Scale) 1:100,000

DIOS Exploration Inc.

363 Projet (Project): HOTISH

Carte (Map) 1: Carte de la propriété (Property map)

SNRC (NTS): 32P09, 10, 15, 16
 33A01, 23M13

UTM, Zone 18, Nad27

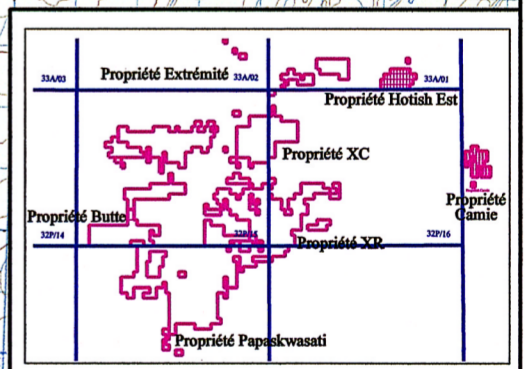
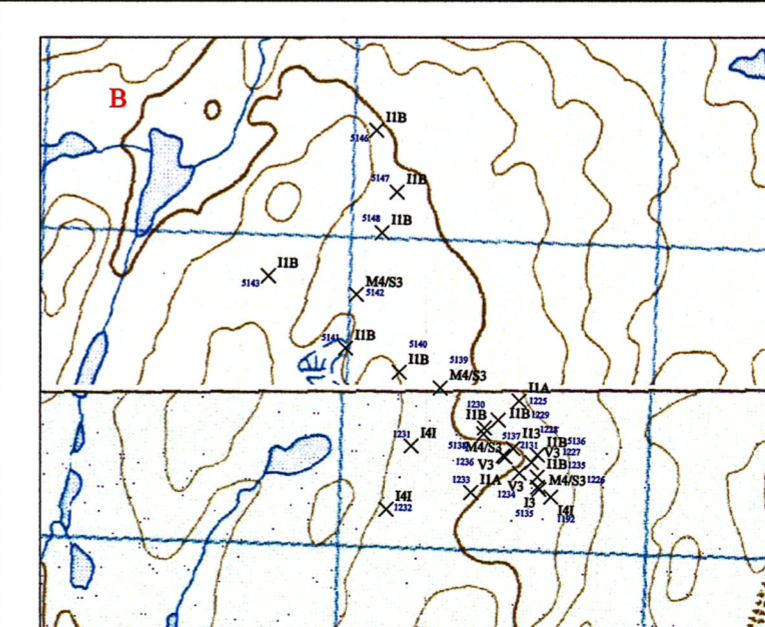
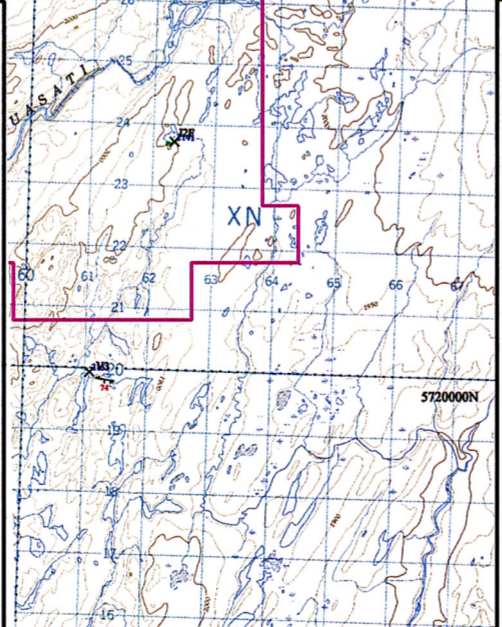
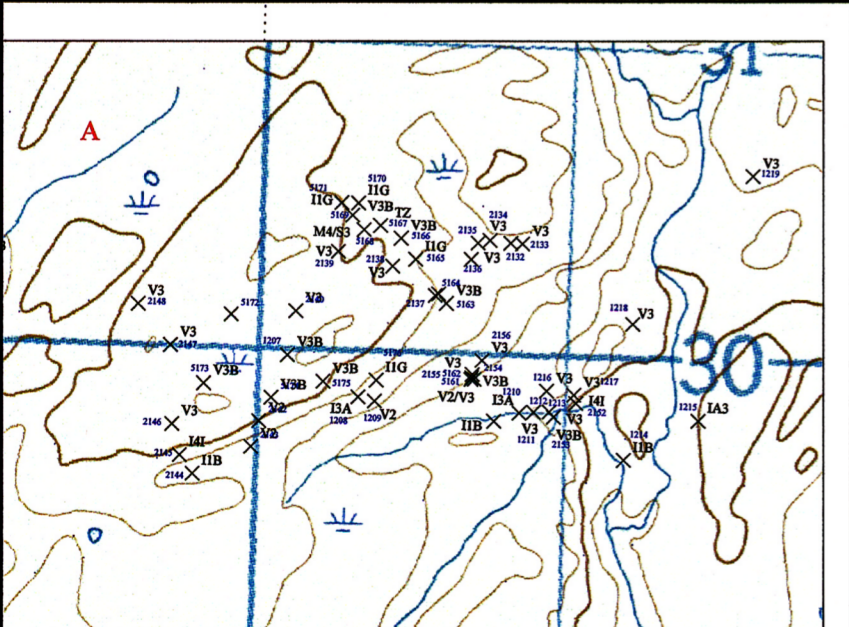
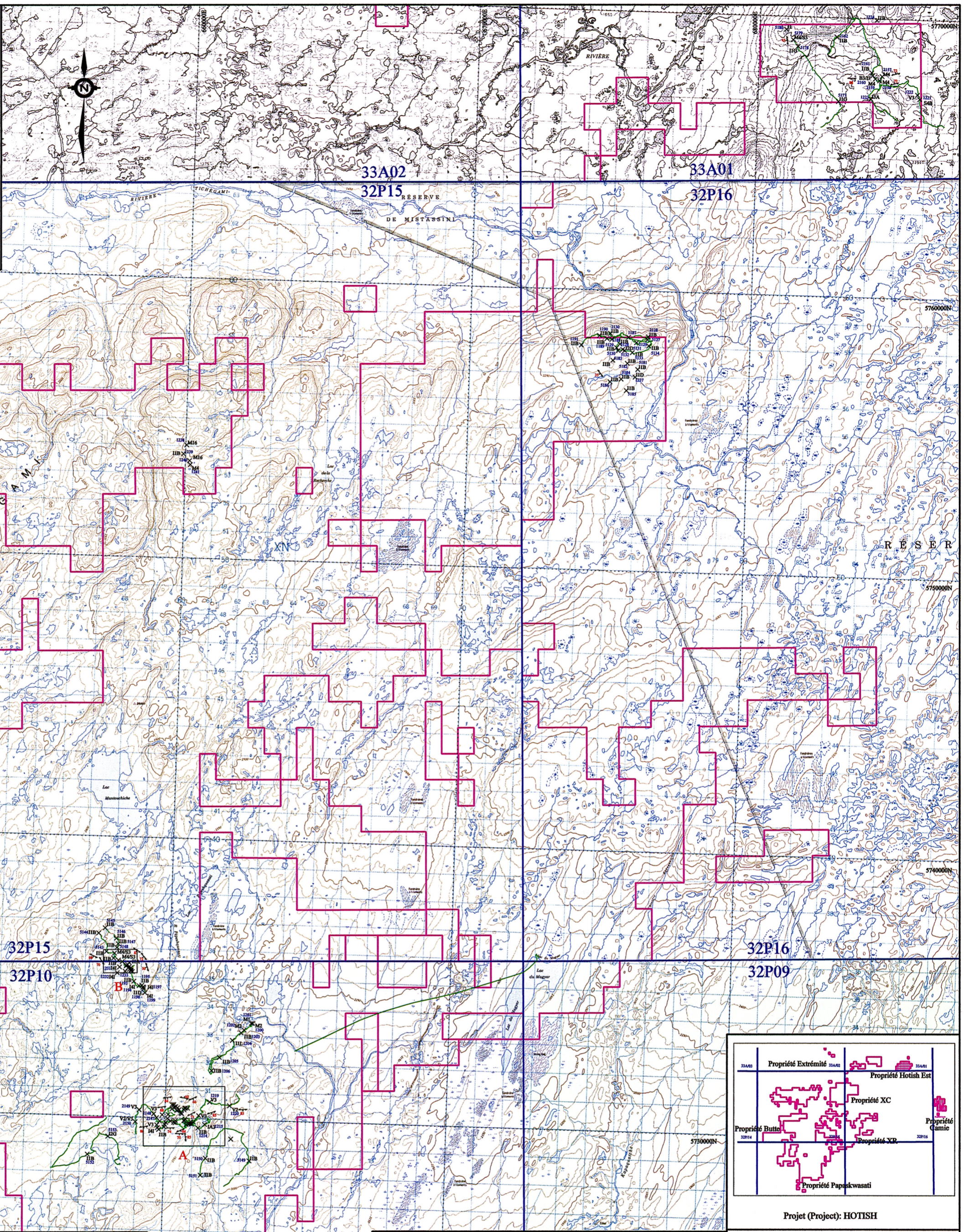
Géologue: J. Lalancette, Ing., 2011
 Dessin: Samcei Gao
 Date: Nov., 2011

Jean-Luc Lalancette, Ing.

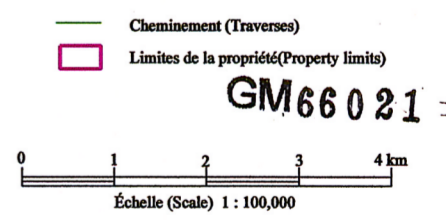
ios Services Géoscientifiques Inc.

GM66021

- × Affleurement (Outcrop)
- Foliation
- 50 Pente (Dip)
- 514 Numéro d'affleurement (Outcrop number)
- I1A: Granite à feldspath alcalin (Alkali feldspar granite)
- I1B: Granite
- I1G: Pegmatite
- I2: Diorite
- I3A: Gabbro
- I3B: Diabase
- I3: Roches intrusives mafiques (Intrusive mafic rocks)
- I4: Périodite (Peridotite)
- V3A: Basalte andésitique (Andesitic basalt)
- V3B: Basalte (Basalt)
- M4: Paragneiss
- M5: Gneiss quartzofeldspathique (Quartzofeldspar gneiss)
- M6: Gneiss granitique (Granitic gneiss)
- M16: Amphibolite
- M22: Migmatite
- S1A: Grès quartzitique (Quartzitic sandstone)
- S5: Brèche (Breccia)
- VQZ: Veine de quartz (Quartz vein)



Projet (Project): HOTISH



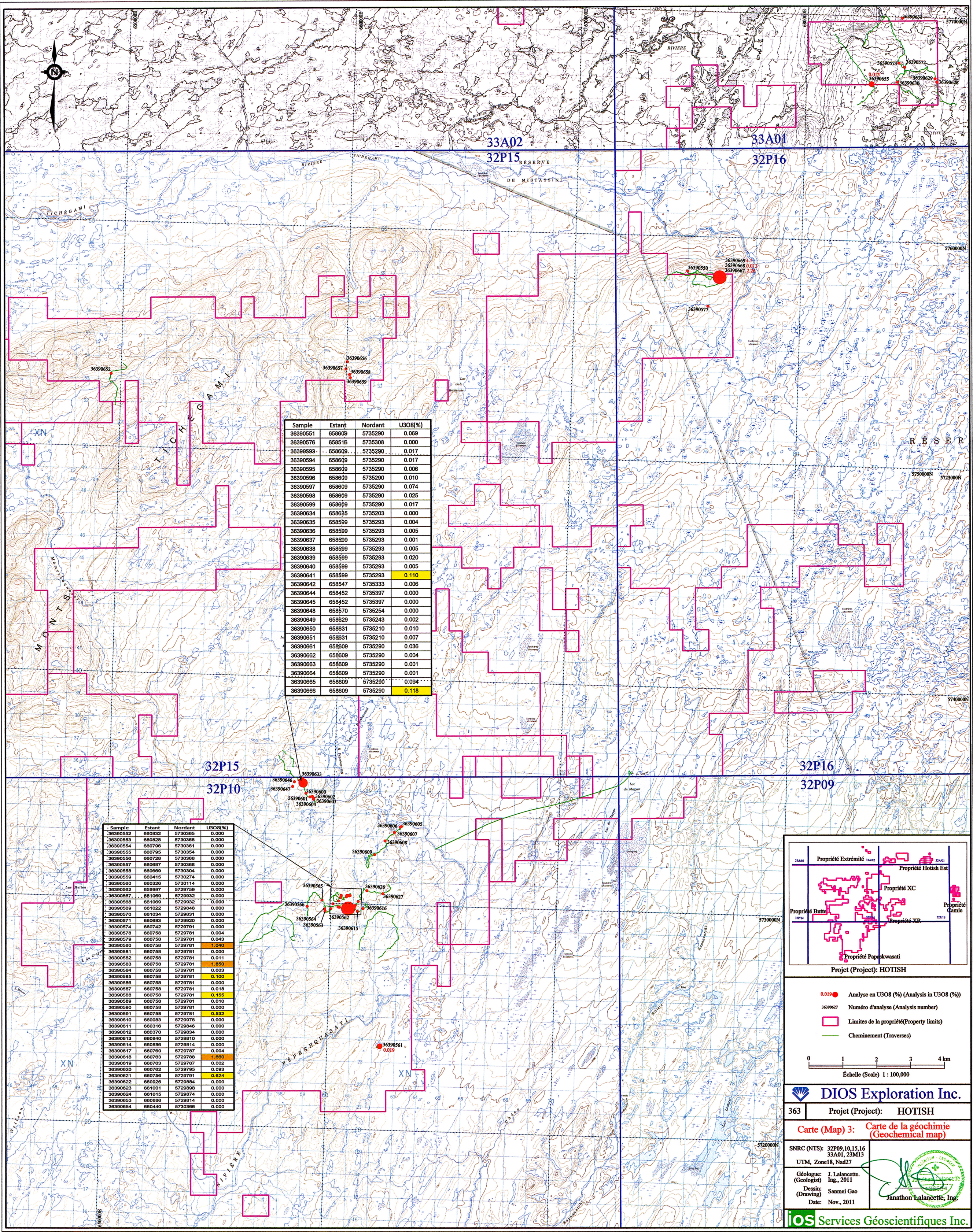
DIOS Exploration Inc.
363 | Projet (Project): HOTISH

Carte (Map) 2: Carte des affleurements (Outcrops map)

SNRC (NTS): 32P09, 10, 15, 16
33A01, 23M13
UTM, Zone 18, Nad27
Géologue: J. Lalancette, Ing., 2011
Dessin (Drawing): Sanmei Gao
Date: Nov., 2011

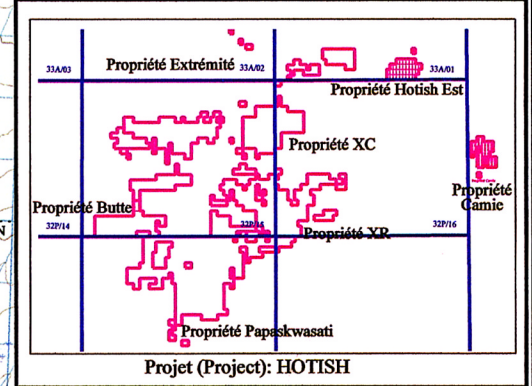


IOS Services Géoscientifiques Inc.



Sample	Estant	Nordant	U3O8(%)
36390551	658609	5735290	0.069
36390576	658515	5735308	0.000
36390593	658609	5735290	0.017
36390594	658609	5735290	0.017
36390595	658609	5735290	0.006
36390596	658609	5735290	0.010
36390597	658609	5735290	0.074
36390598	658609	5735290	0.025
36390599	658609	5735290	0.017
36390634	658655	5735203	0.000
36390635	658589	5735293	0.004
36390636	658589	5735293	0.005
36390637	658599	5735293	0.001
36390638	658599	5735293	0.005
36390639	658599	5735293	0.020
36390640	658599	5735293	0.005
36390641	658599	5735293	0.110
36390642	658547	5735333	0.006
36390644	658452	5735397	0.000
36390645	658452	5735397	0.000
36390648	658570	5735254	0.000
36390649	658629	5735243	0.002
36390650	658631	5735210	0.010
36390651	658631	5735210	0.007
36390661	658609	5735290	0.036
36390662	658609	5735290	0.004
36390663	658609	5735290	0.001
36390664	658609	5735290	0.001
36390665	658609	5735290	0.094
36390666	658609	5735290	0.118

Sample	Estant	Nordant	U3O8(%)
36390552	660832	5730365	0.000
36390553	660828	5730366	0.000
36390554	660796	5730361	0.000
36390555	660795	5730354	0.000
36390556	660728	5730368	0.000
36390557	660667	5730368	0.000
36390558	660669	5730304	0.000
36390559	660415	5730274	0.000
36390560	660326	5730114	0.000
36390562	659907	5729759	0.000
36390567	661068	5729932	0.000
36390568	661069	5729632	0.000
36390569	661034	5729646	0.000
36390570	661034	5729631	0.000
36390571	660683	5729620	0.000
36390574	660742	5729791	0.004
36390576	660758	5729781	0.004
36390579	660758	5729781	0.043
36390580	660758	5729781	1.040
36390581	660758	5729781	0.000
36390582	660758	5729781	0.011
36390583	660758	5729781	1.850
36390584	660758	5729781	0.003
36390585	660758	5729781	0.100
36390591	660758	5729781	0.532
36390610	660083	5729876	0.000
36390611	660316	5729646	0.000
36390612	660370	5729834	0.000
36390613	660840	5729810	0.000
36390614	660898	5729814	0.000
36390617	660700	5729787	0.004
36390618	660763	5729788	1.660
36390619	660763	5729787	0.002
36390620	660762	5729795	0.093
36390621	660756	5729791	0.624
36390626	660926	5729884	0.000
36390623	661001	5729886	0.000
36390624	661015	5729874	0.000
36390653	660886	5729814	0.000
36390654	660440	5730366	0.000



Projet (Project): HOTISH

- 0.019 Analyse en U3O8 (%) (Analysis in U3O8 (%))
- 36390627 Numéro d'analyse (Analysis number)
- Limites de la propriété (Property limits)
- Cheminement (Traverses)

0 1 2 3 4 km
Échelle (Scale) 1 : 100,000

DIOS Exploration Inc.

363 **Projet (Project): HOTISH**

Carte (Map) 3: Carte de la géochimie (Geochemical map)

SNRC (NTS): 32P09, 10, 15, 16
33A01, 23M13
UTM, Zone18, Nad27

Géologue: J. Lalancette, Ing., 2011
Dessin: Samcei Gao
Date: Nov., 2011

Janathon Lalancette, Ing.

IOS Services Géoscientifiques Inc.