

FIGURE 3. A) TOTAL MAGNETIC INTENSITY (TMI) MAP; B) TMI REDUCE TO POLE MAP; C) GEOMAGNETIC REFERENCE FIELD (IGRF) MAP AND D) DT MAGNETIC FIELD MAP, OF THE IRON-TEE PROJECT

GM65377

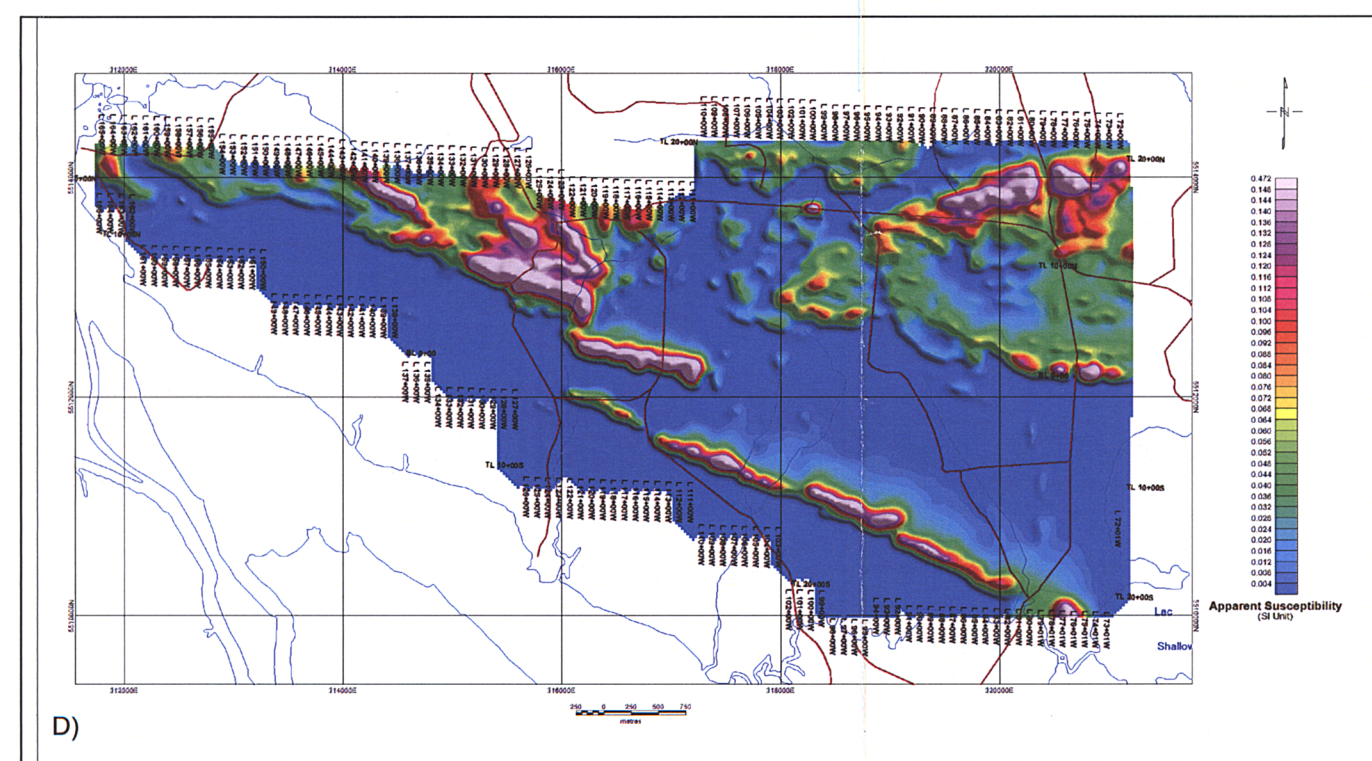
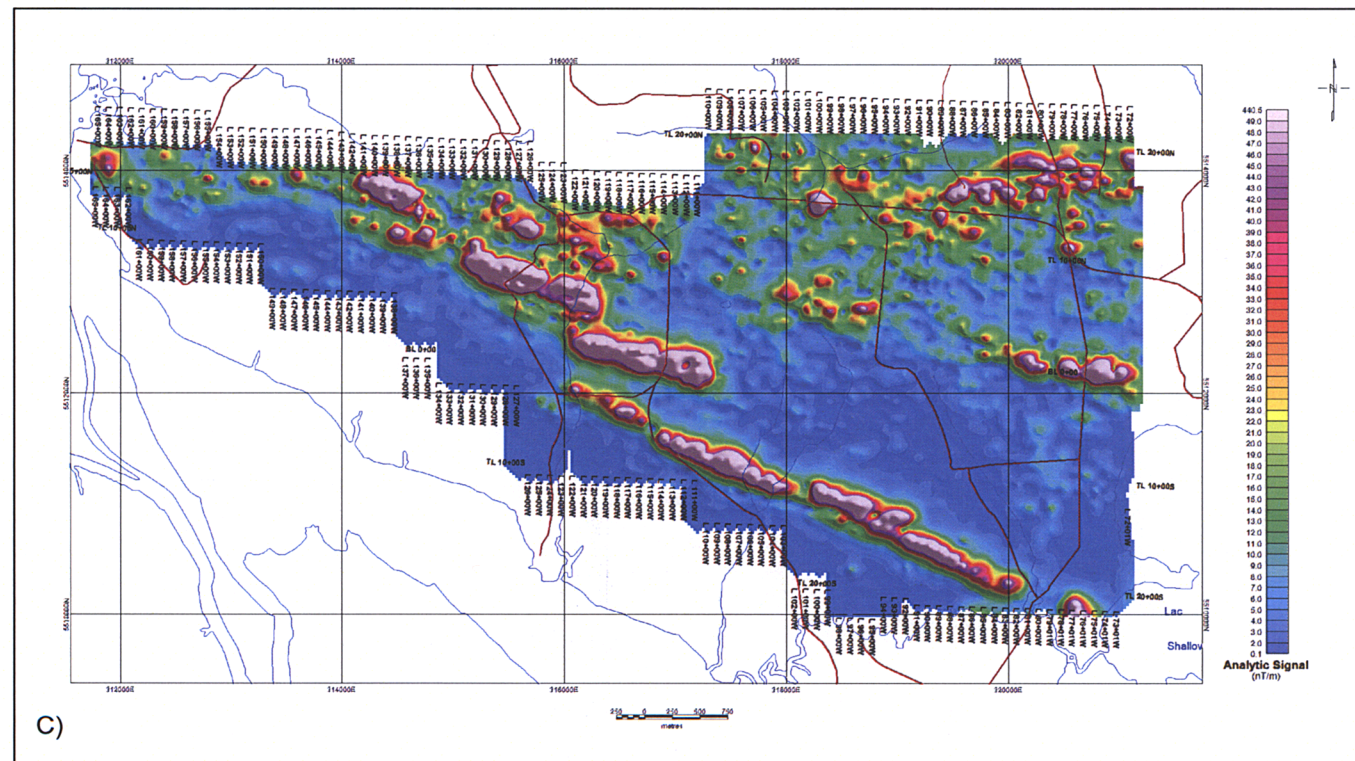
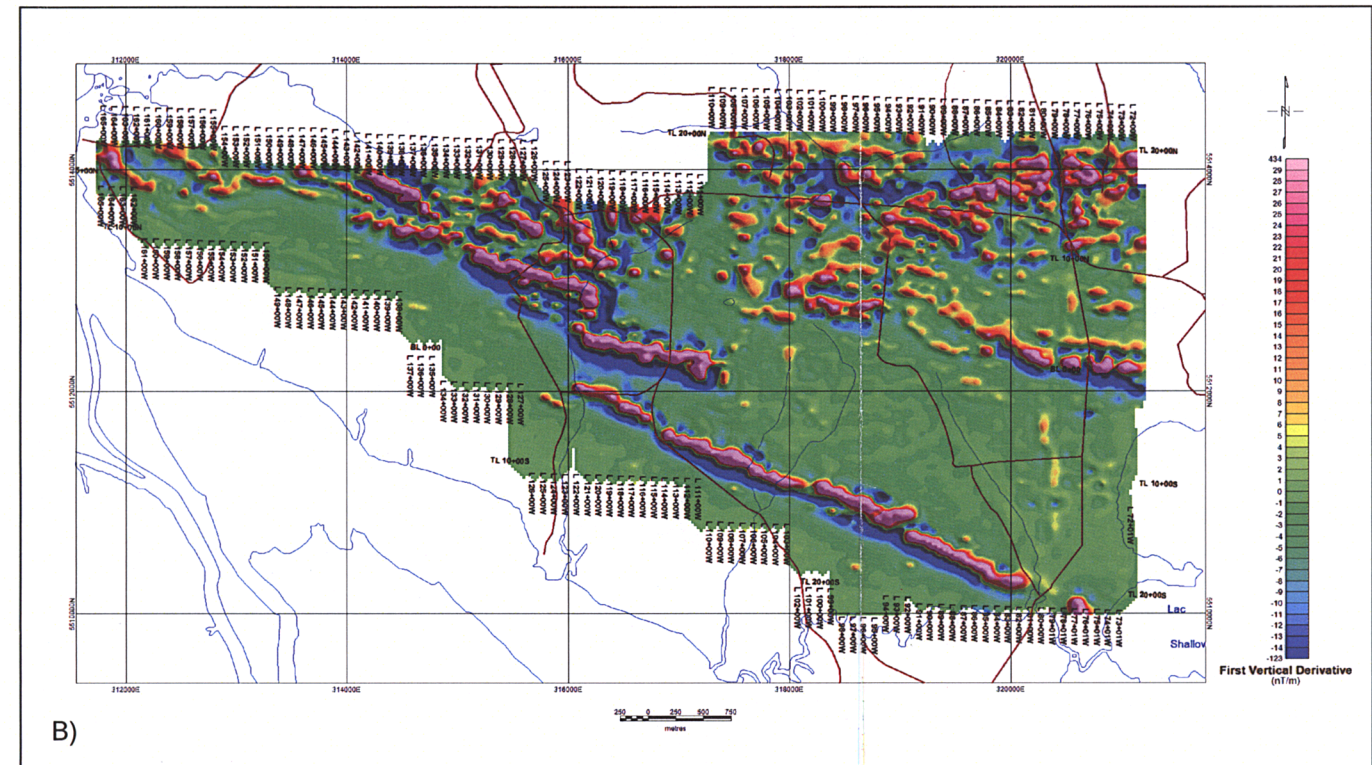
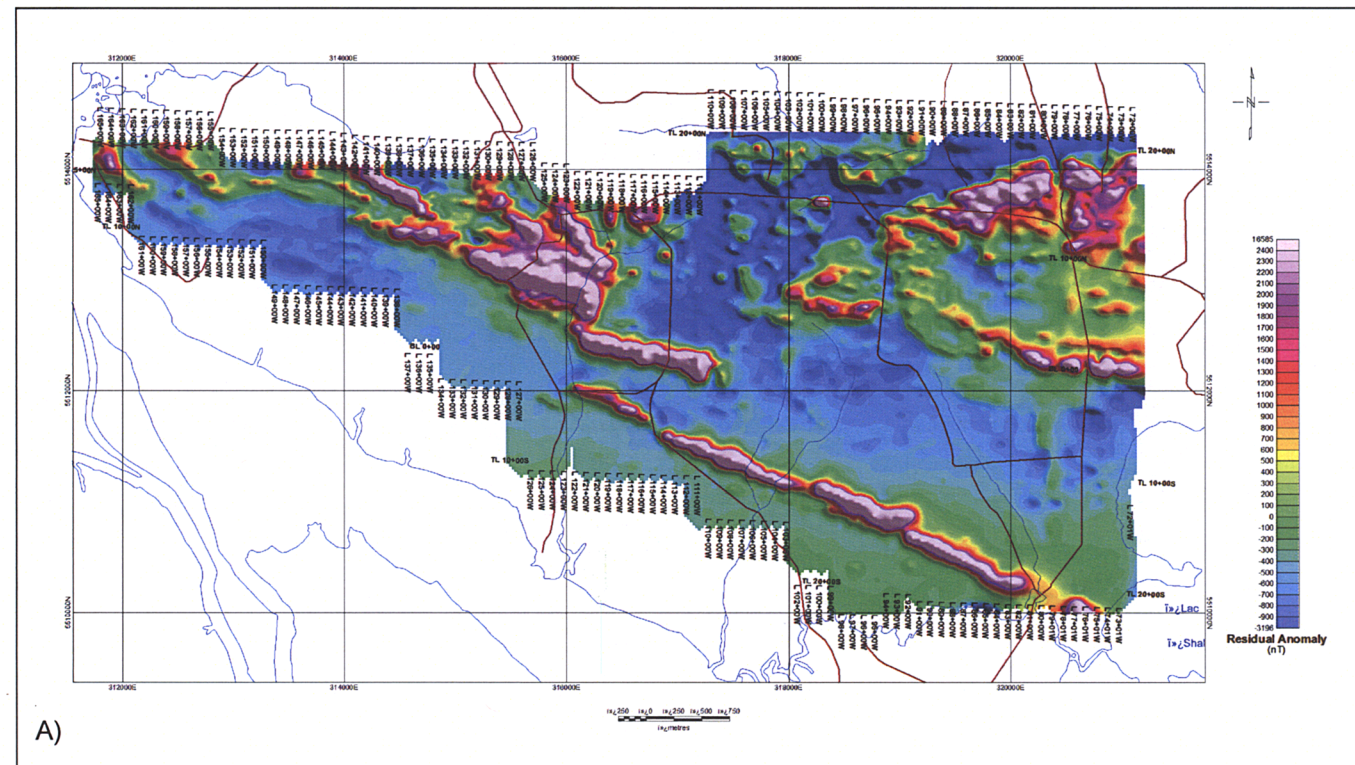
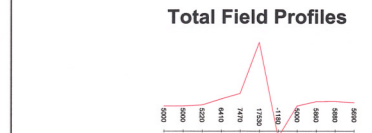
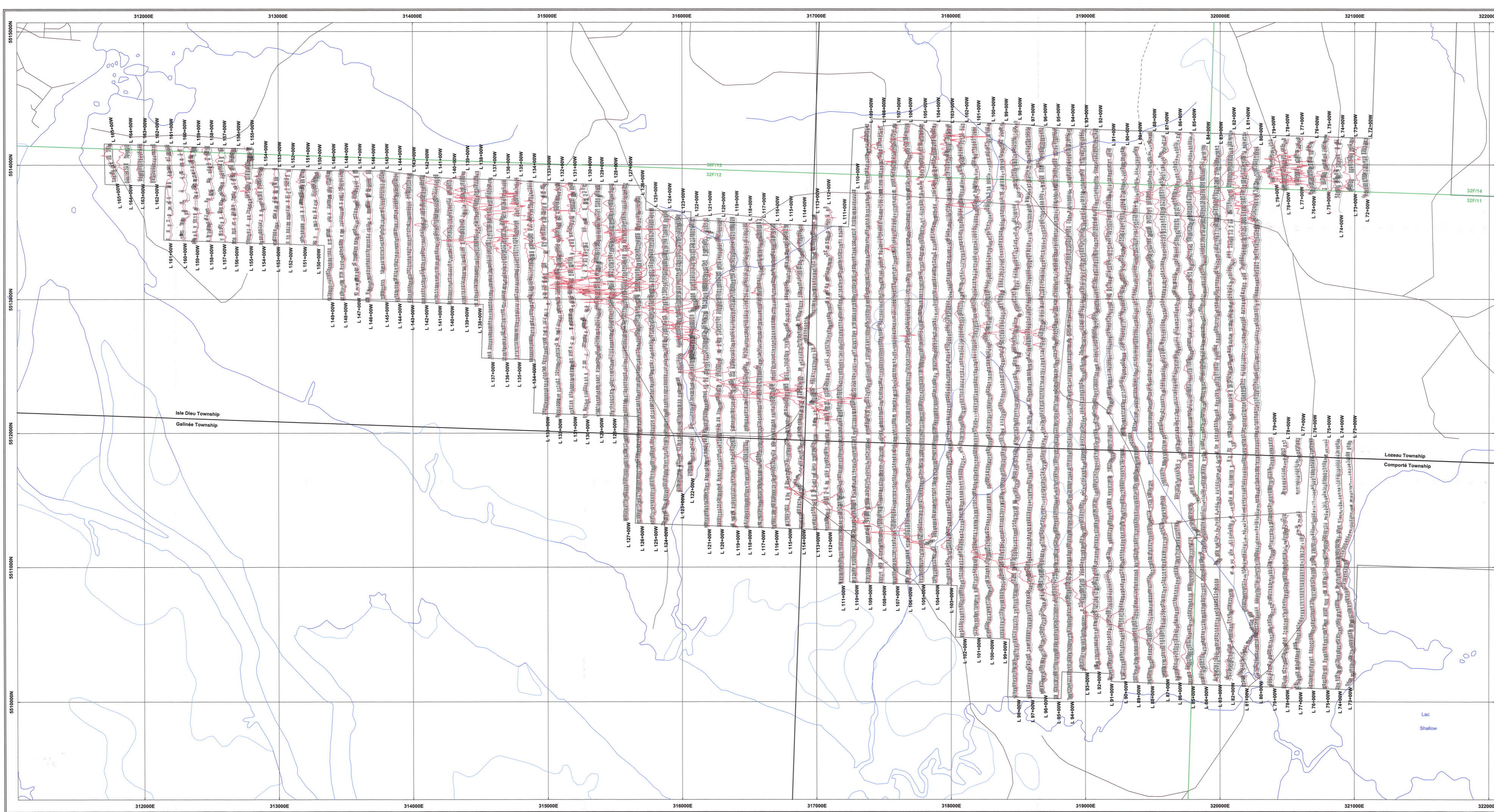


FIGURE 4. A) 2-ORDER RESIDUAL ANOMALY MAP; B) FIRST VERTICAL DERIVATIVE MAP; C) ANALYTIC SIGNAL MAP AND D) APPARENT SUSCEPTIBILITY MAP, OF THE IRON-TEE PROJECT

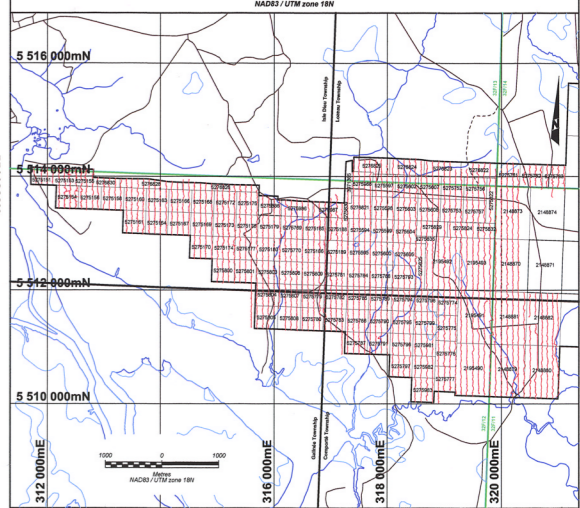
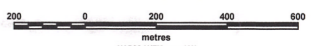
GM65377



Base level: 56000 nT
 Profile scale: 5000 nT/cm
 Survey line instrument: GSM-19W from GEM Systems
 Base station instrument: GSM-19W from GEM Systems, cycle of 10 s

REGU AU MINIF
 06 DEC. 2010
 DISCUSSION DES TITRES ANTÉRIEURS
 1087577

Scale 1:10 000

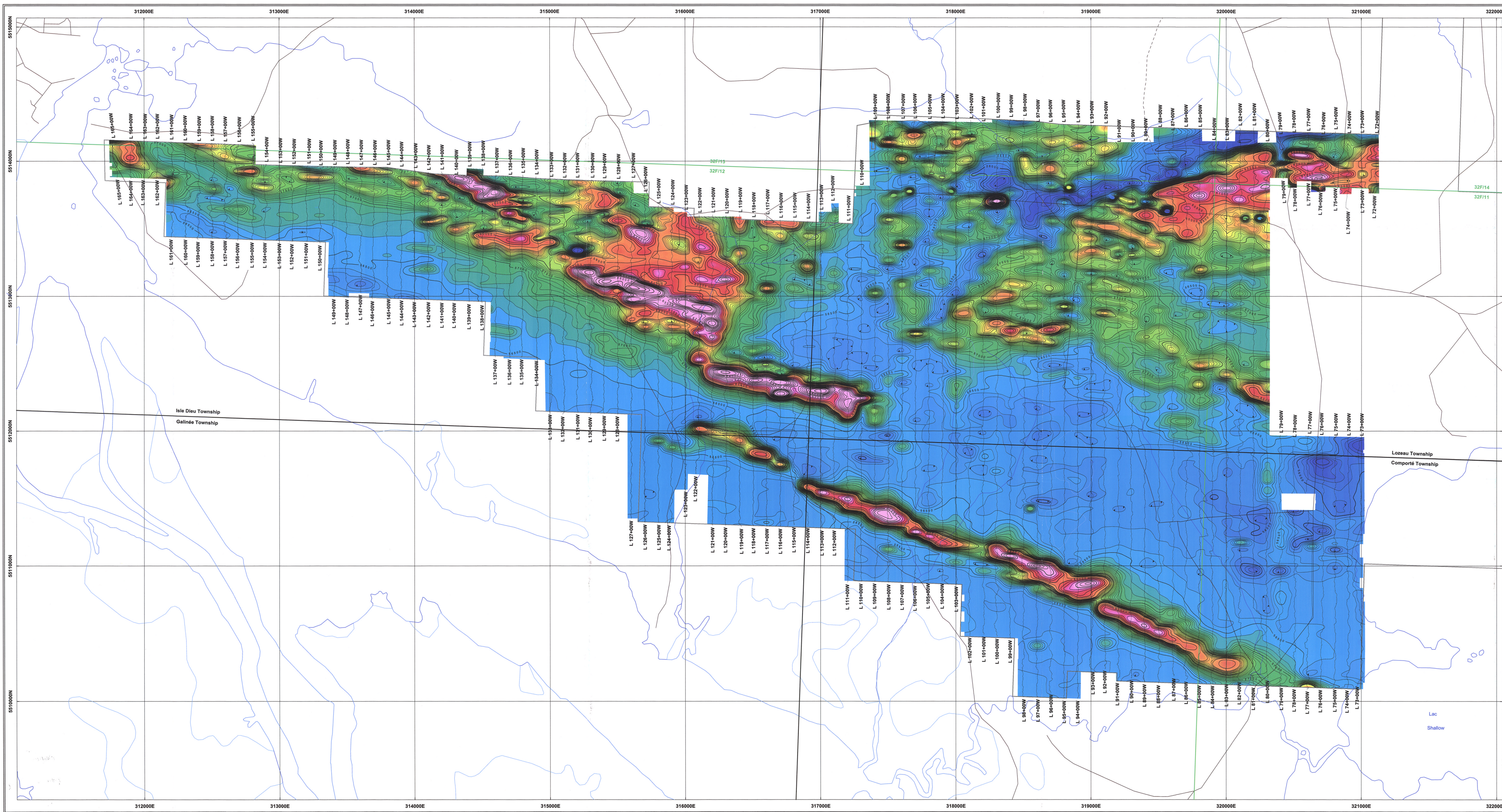


Apella Resources Inc.
Iron Tee Project
 Isle Dieu, Galinée, Lozeau & Comporté Townships, QC

GPS-integrated Magnetic Field Survey
 Total Field Profiles (nT)

Interpreted by: M. Chemam, P.Geo. 2010/11
 Surveyed by: Abitibi Geophysics Inc. 2010/11
 Approved by: C. Brown, G.I.T. 2010/11
 Reference maps: 32F/11-12-13-14 Scale 1:10 000
 Project no: 10N094 Map no: 1.1

ABITIBI
 GEOPHYSICS



Total Field Contours

Unit: nT
 Survey line instrument: GSM-19GW from GEM Systems
 Base station instrument: GSM-19W from GEM Systems, cycle of 10 s

APPELLA AU QUÉBEC

06 DEC. 2010

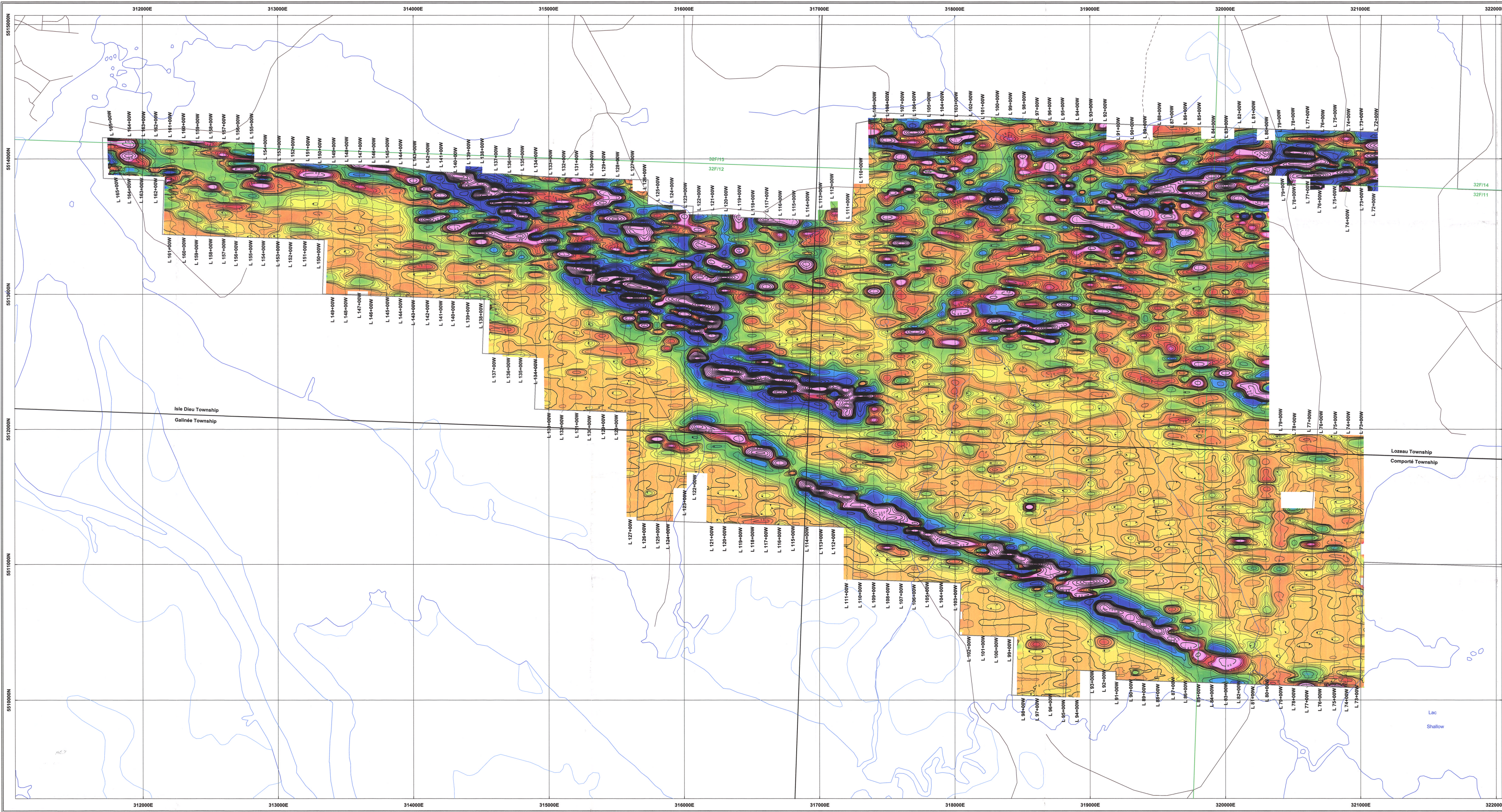
1069577

Scale 1:10 000

Apella Resources Inc.
Iron Tee Project
 Isle Dieu, Galinée, Lozeau & Comporté Townships, QC

GPS-integrated Magnetic Field Survey
Total Field Contours
 (nT) *GEM65377*

Interpreted by: M. Chemam, P.Geo.	2010/11	
Surveyed by: Abitibi Geophysics Inc.	2010/10	
Approved by: C. Brown, G.I.T.	2010/11	
Reference maps: 32F/11-12-13-14 Scale 1:10 000	Project no: 10N094	



Calculated Vertical Gradient Contours

Unit: nT/m

Scale 1:10 000

5 516 000mN
5 514 000mN
5 512 000mN
5 510 000mN
312 000mE
316 000mE
318 000mE
320 000mE

Apella Resources Inc.
Iron Tee Project
Isle Dieu, Galinée, Lozeau & Comporté Townships, QC

GPS-integrated Magnetic Field Survey
Calculated Vertical Gradient Contours
(nT/m) **GM65 3-77**

Interpreted by: M. Chemam, P.Geo. 2010/11
 Surveyed by: Abitibi Geophysics Inc. 2010/10
 Approved by: C. Brown, G.I.T. 2010/11
 Reference maps: 32F/11-12-13-14 Scale 1:10 000
 Project no: 10N094 Map no: 1.4

ABITIBI
GEOPHYSICS



LEGEND

MAGNETIC SURVEY

- Magnetic High Trend
 - - - - - Questionable Continuity
 - - - - - Definite Continuity
- Magnetic Low Trend
 - - - - - Questionable Continuity
 - - - - - Definite Continuity
- Magnetic Body Outline
 - Positive Anomaly
 - Negative Anomaly
- Magnetic Domain Boundary
 - MD-01
 - MD-02

Miscellaneous Symbols

- Observed Fault / Shear
- Geophysically Inferred Fault / Shear
- Target Area

REGU AU MINRP
06 DEC. 2010
DIRECTION DES TITRES MINERS
1069577

Scale 1:10 000

Apella Resources Inc.
Iron Tee Project
Isle Dieu, Galinée, Lozeau & Comporté Townships, QC

Geophysical Interpretation
GM 653 77

Interpreted by: M. Chemam, P.Geo.	2010/11
Surveyed by: Abitibi Geophysics Inc.	2010/10
Approved by: C. Brown, G.I.T.	2010/11
Reference maps: 32F/11-12-13-14 Scale 1:10 000	
Project no: 10N094	Map no: 10.0