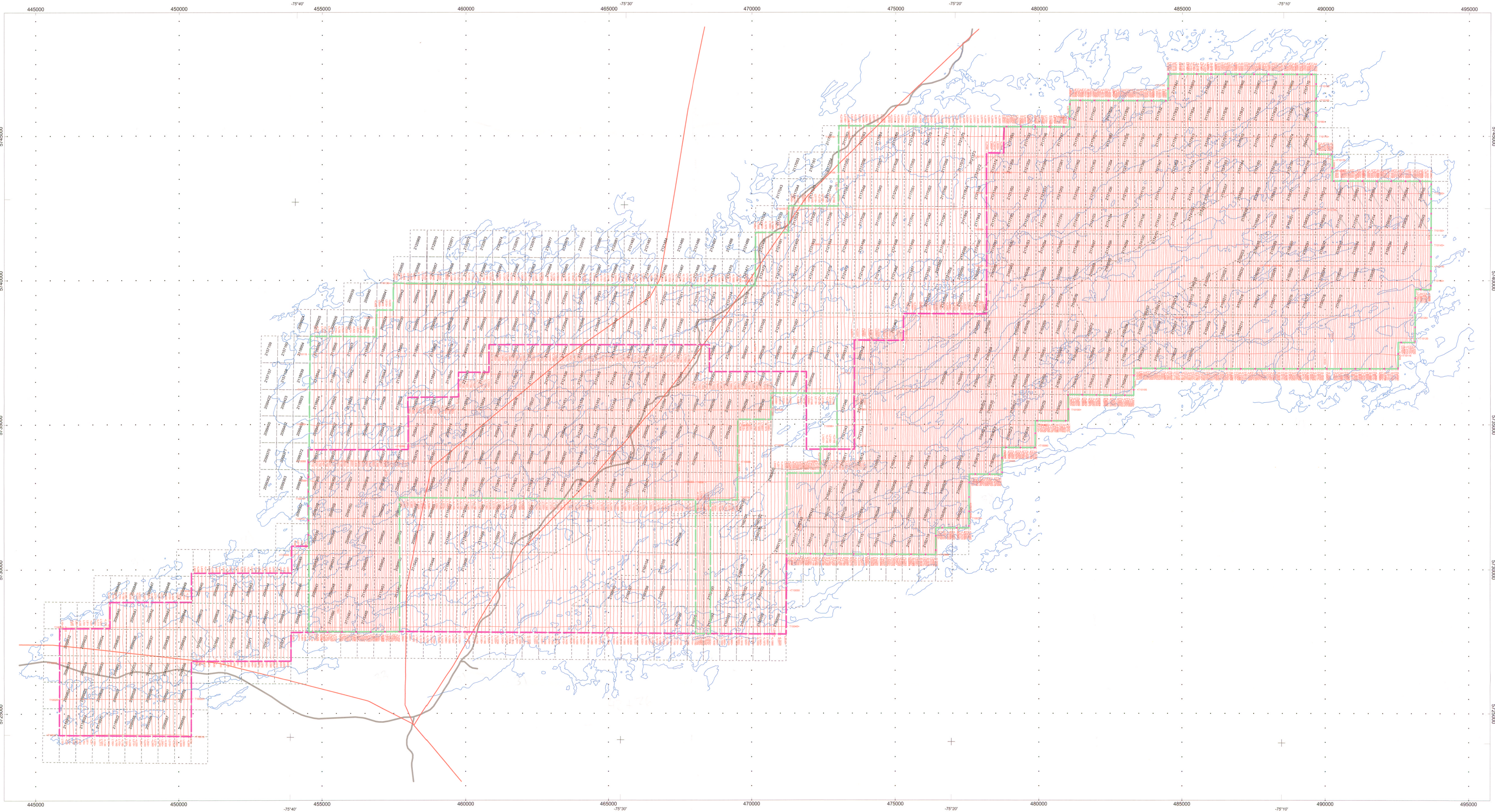
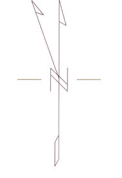


Inc.: 75.4°  
Dec.: -16.8°



**SURVEY SPECIFICATIONS**  
-Line spacing: 62.5 and 125 m  
-Mean terrain clearance: 30 m (± 6 m)  
-Line direction: N-S  
-Tie-line direction: E-W  
-Survey date: June 5th to 26th, 2009  
-Line kilometers: 6410.4 km

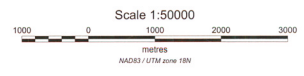
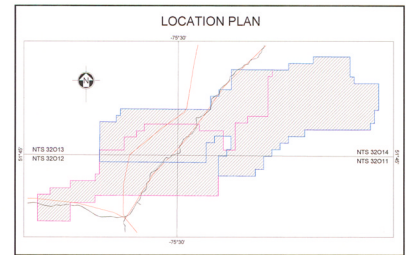
**GEODEIC SPECIFICATIONS**  
-Map projection: UTM  
-Datum: NAD-83  
-UTM zone: 18 north  
-Central meridian: 69° west

**AIRCRAFT**  
-Robinson R44 Helicopter, callign: C-GATM  
-Aircraft elevation (MTC): 60 m (nominal)  
-Average aircraft speed: 27.8 and 34.7 m/s  
-GPS receiver: Omnistar differential GPS  
-GPS sample rate: 1 s

# 844534

G44 64761

PRELIMINARY



**LEGEND**

- FLIGHT PATH
- TDEM SURVEY
- SPECTROMETRIC SURVEY
- LAKE
- ROAD
- POWER LINE

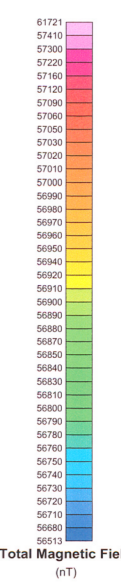
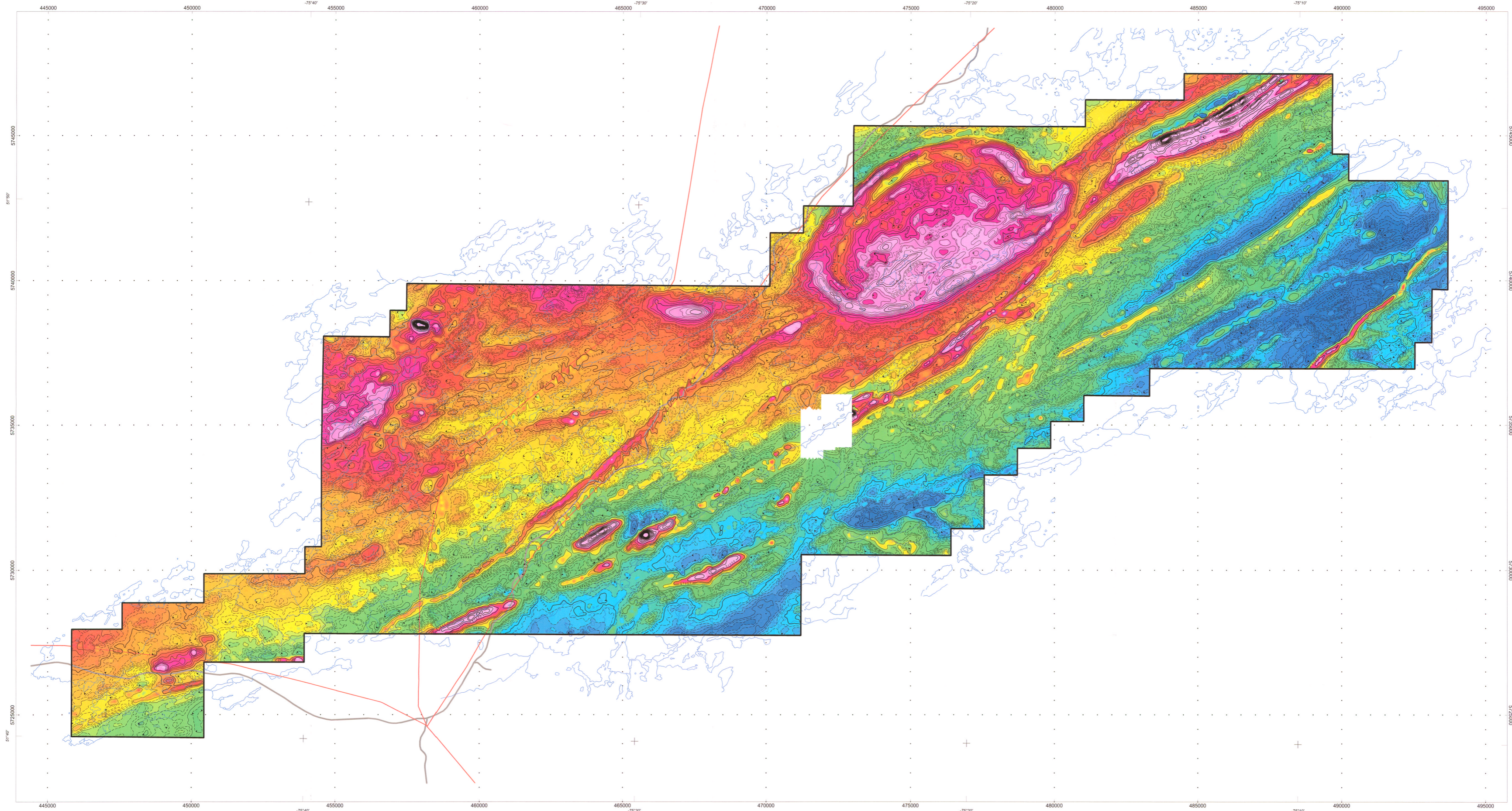
**EXPLORATION NEMASKA INC.**

**NEMISCAU'S PROJECT**  
**HELICOPTER BORNE GEOPHYSICAL SURVEY**  
**FLIGHT PATH RECOVERY AND PROPERTY LIMITS**

Contract: M-09678 Date: July, 2009  
Scale: 1: 50000 Drawing: 09-07-352-PRR  
Drawing by: A. Beaudoin, tech. Processed by: C. Lefourneau, Phys.  
Checked by: R. Paul, Eng. Approved by: R. Paul, Eng.

**Resources Naturelles**  
**GEOPHYSICS GPR INTERNATIONAL INC.**

Inc.: 75.4°  
Dec.: -16.8°



**SURVEY SPECIFICATIONS**  
-Line spacing: 62.5 and 125 m  
-Mean terrain clearance: 30 m (± 6 m)  
-Line direction: N-S  
-Tie-line direction: E-W  
-Survey date: June 8th to 16th, 2009  
-Line kilometres: 6410.4 km

**GEODETTIC SPECIFICATIONS**  
-Map projection: UTM  
-Datum: NAD-83  
-UTM zone: 18 north  
-Central meridian: 68° west

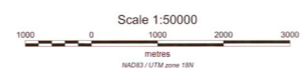
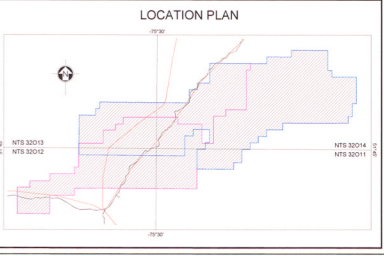
**AIRCRAFT**  
-Robinson R44 Helicopter, callign: C-GATM  
-Aircraft elevation (MTC): 60 m (nominal)  
-Average aircraft speed: 27.8 and 34.7 m/s  
-GPS receiver: Omnistar differential GPS  
-GPS sample rate: 1 s

**MAGNETOMETER SPECIFICATIONS**  
-Model: Geometrics G-822 caesium vapour  
-Mounting: Towed bird, 1 sensor  
-Cable length: 26 m  
-Sampling rate: 10 Hz  
-Sensitivity: 0.001 nT (part (H))

**PROCESSING SPECIFICATIONS**  
-Lag correction  
-Diurnal correction  
-Tie-levelling  
-Microlevelling

# 844534

GM 64761 PRELIMINARY



- LEGEND
- INTERVAL CONTOUR 10 nT
- INTERVAL CONTOUR 50 nT
- INTERVAL CONTOUR 250 nT
- PROPERTY LIMITS
- LAKE
- ROAD

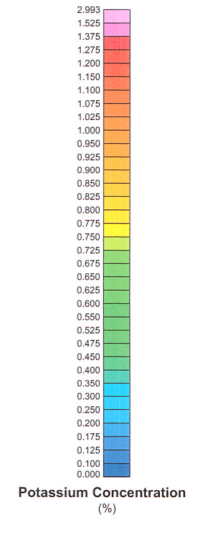
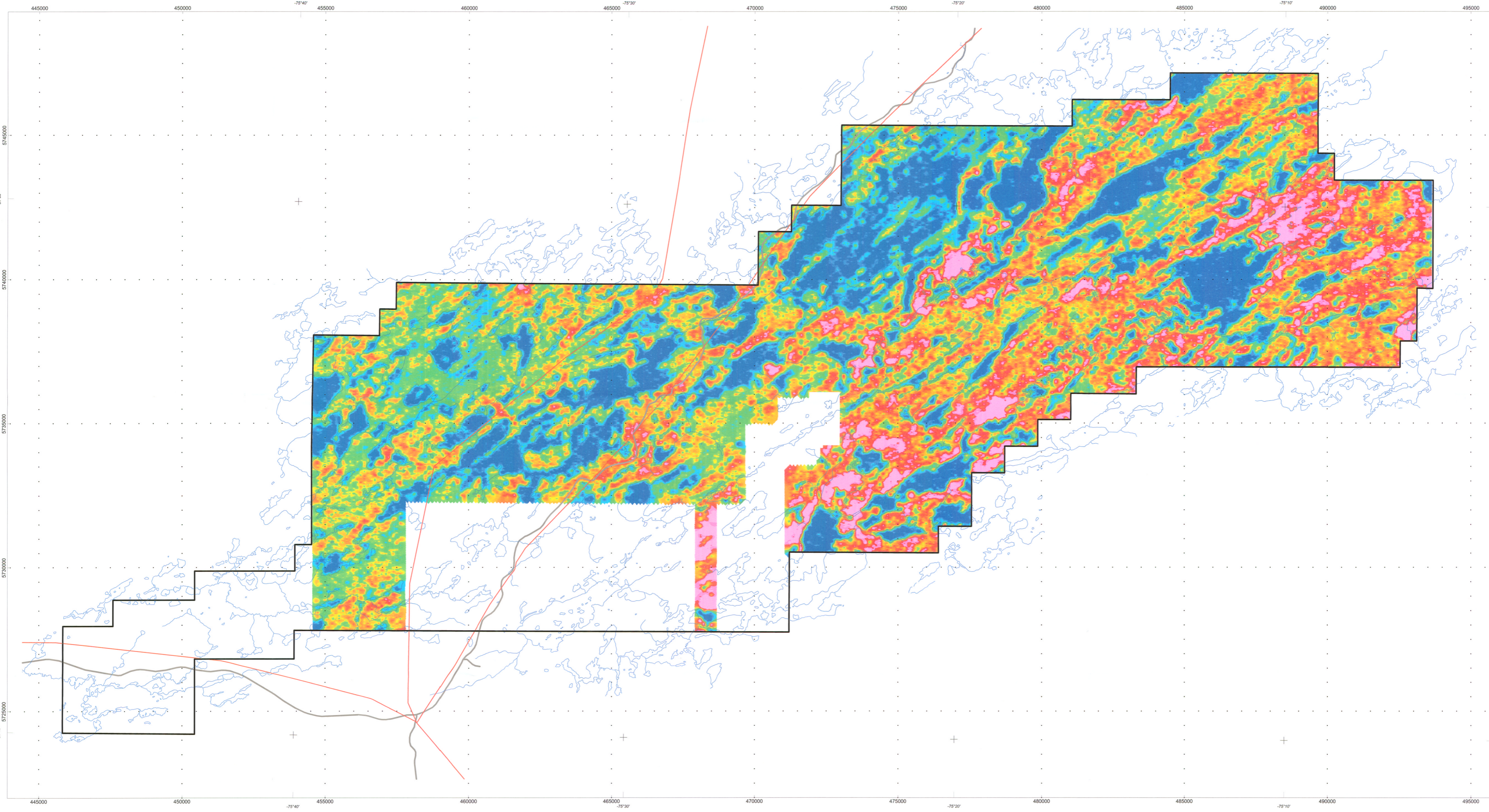
EXPLORATION NEMASKA INC.  
NEMISCAU'S PROJECT  
HELICOPTER BORNE GEOPHYSICAL SURVEY  
TOTAL MAGNETIC FIELD (nT)

Contract: M-09678 Date: July 2009  
Scale: 1:50000 Drawing: 09-07-353.PRF  
Drawing by: A. Beaudoin, tech. Processed by: O. LeGourneau, Phys.  
Checked by: R. Paul, Eng. Approved by: R. Paul, Eng.

Resources Naturalles  
GEOPHYSICS GPR INTERNATIONAL INC.  
# 844534 20 JUL 2009



Inc.: 75.4°  
Dec.: -16.8°



**SURVEY SPECIFICATIONS**

- Line spacing: 125 m
- Mean terrain clearance: 49 m (± 6 m)
- Line direction: N-S
- Tie line direction: E-W
- Survey date: June 15th to 26th, 2009
- Line kilometres: 3115.4 km

**GEODETTIC SPECIFICATIONS**

- Map projection: UTM
- Datum: NAD-83 (Canada Mean)
- UTM zone: 18 north
- Central meridian: 69° west

**AIRCRAFT**

- Robinson R44 Helicopter, callign: C-GATM
- Aircraft elevation (MTI): 50 m (nominal)
- Average aircraft speed: 27.8 m/s
- GPS receiver: Omnistar differential GPS
- GPS sample rate: 1 s

**AIRBORNE GAMMA-RAY SPECTROMETER SPECIFICATIONS**

- Model: RSX-5 RADIATION SOLUTIONS
- Resolution: 256 channels
- Five NaI crystal detectors, each with individual electronics, for a total of 16.8 litres of downward looking crystals and 4.2 upward looking crystals
- Energy spectra from 36 keV to 3 MeV with linearity correction
- Data sampling rate: 1 Hz
- Signal sampling: 20 MHz by internal 12 bit ADC for each detector
- Pulse rate per detector: > 60000 pulses per second with negligible dead time
- Channel capacity: 65500 counts/sampling period
- Operating temperature range: -10° to +55° Celsius

**RADAR SPECIFICATIONS**

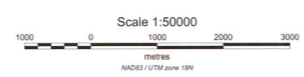
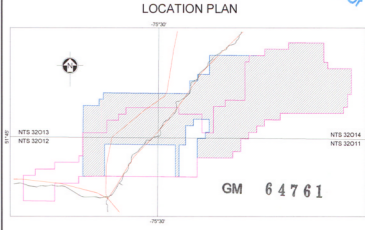
- Model: TRX-3000I TRU-40
- Radar installation: helicopter
- Radar accuracy: 1.5 m

**PROCESSING SPECIFICATIONS**

- Lag correction
- Deadtime correction
- Energy calibration
- Window elements
- Aircraft and cosmic background correction
- Radar removal using upward looking crystal method
- Striping correction
- Height correction
- Conversion to equivalent concentration

#84534

PRELIMINARY



**LEGEND**

- SURVEY LIMITS
- LAKE
- ROAD
- POWER LINE

**EXPLORATION NEMISCAU INC.**

**NEMISCAU'S PROJECT**  
**HELICOPTER BORNE GEOPHYSICAL SURVEY**  
**POTASSIUM CONCENTRATION (%)**

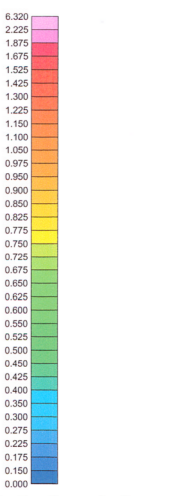
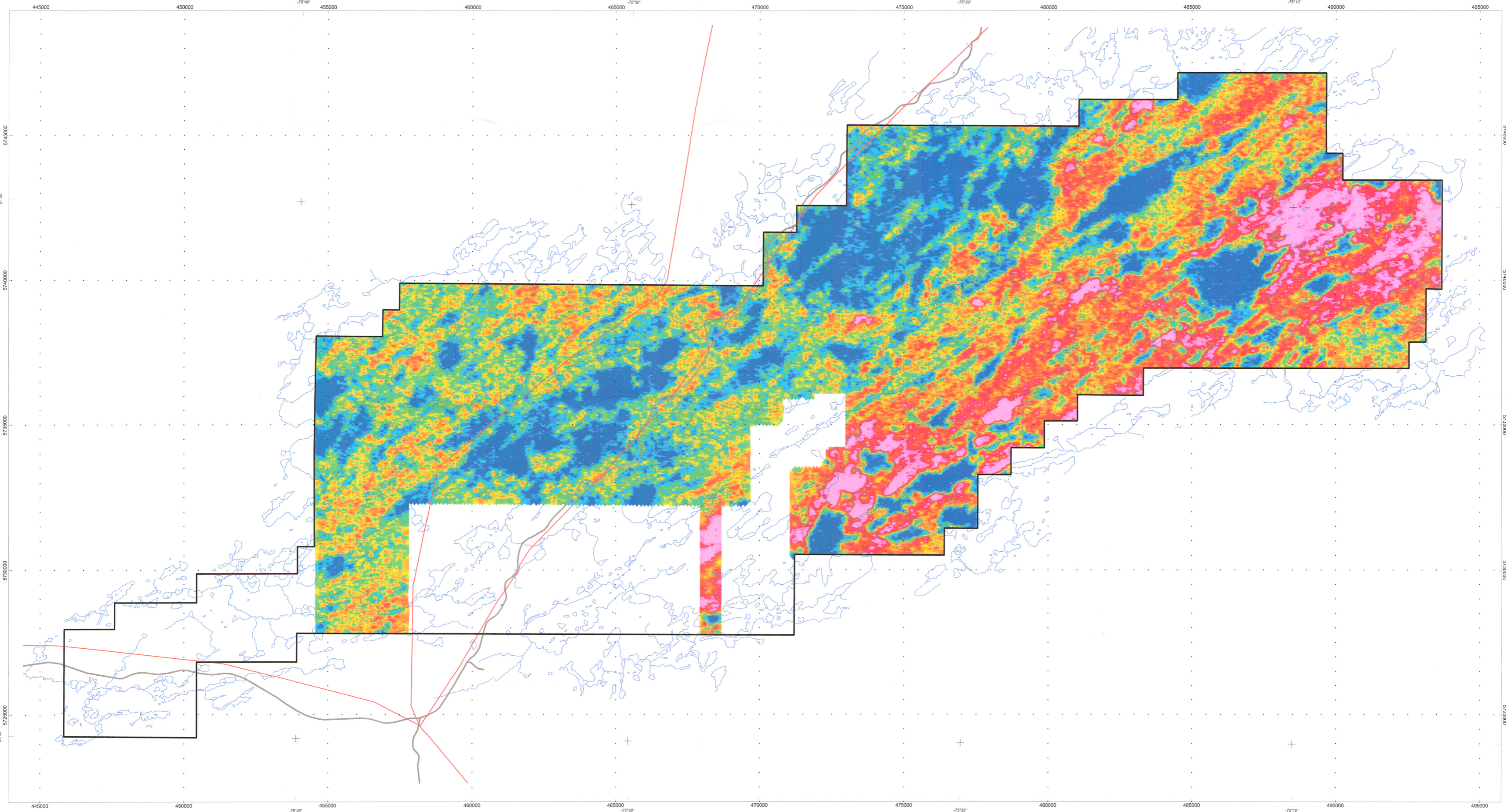
Contract: M-09678 Date: July 2009  
Scale: 1:50000 Drawing: 09-07-355-PRE  
Drawing by A. Beaudoin, tech. Processed by O. Létourneau, Phys.  
Checked by R. Paul, Eng. Approved by R. Paul, Eng.

**GEOPHYSICS GPR INTERNATIONAL INC.**

Resources Naturelles  
Bureau Régional Val-d'Aur  
30 JUIL 2009

# 837753

Inc.: 75.4°  
Dec.: -16.8°



Equivalent Uranium Concentration (ppm)

**SURVEY SPECIFICATIONS**

- Line spacing: 125 m
- Mean terrain clearance: 49 m (± 6 m)
- Line direction: N-S
- Te-line direction: E-W
- Survey date: June 19th to 26th, 2009
- Line kilometres: 3115.4 km

**GEODETTIC SPECIFICATIONS**

- Map projection: UTM
- Datum: NAD-83 (Canada Mean)
- UTM zone: 18 north
- Central meridian: 69° west

**AIRCRAFT**

- Robinson R44 Helicopter, callign: C-GATM
- Aircraft elevation (MFC): 60 m (nominal)
- Average aircraft speed: 27.8 m/s
- GPS receiver: Omnistar differential GPS
- GPS sample rate: 1 s

**AIRBORNE GAMMA-RAY SPECTROMETER SPECIFICATIONS**

- Model: RSX-S RADIATION SOLUTIONS
- Resolution: 256 channels
- Five NaI crystal detectors, each with individual electronics, for a total of 16.8 litres of downward looking crystals and 4.2 upward looking crystals
- Energy spectra from 36 keV to 3 MeV with linearity correction
- Data sampling rate: 1 Hz
- Signal sampling: 25 MHz by internal 12 bit ADC for each detector
- Pulse rate per detector: > 60000 pulses per second with negligible dead time
- Channel capacity: 65500 counts/sampling period
- Operating temperature range: -10° to +55° Celsius

**RADAR SPECIFICATIONS**

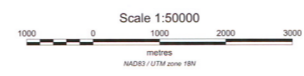
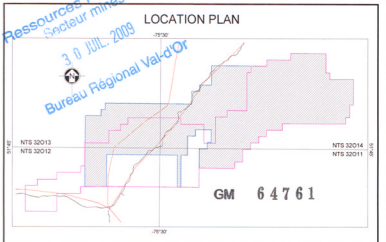
- Model: TRX-3000 / TR-40
- Radar installation: helicopter
- Radar accuracy: 1.5 m

**PROCESSING SPECIFICATIONS**

- Lag correction
- Deadtime correction
- Energy calibration
- Window elements
- Aircraft and cosmic background correction
- Radon removal using upward looking crystal method
- Stripping correction
- Height correction
- Conversion to equivalent concentration

#847534

PRELIMINARY



**LEGEND**

- SURVEY LIMITS
- LAKE
- ROAD
- POWER LINE

**EXPLORATION NEMASKA INC.**

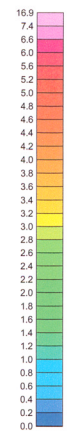
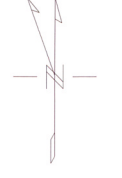
**NEMISCAU'S PROJECT**  
**HELICOPTER BORNE GEOPHYSICAL SURVEY**  
**EQUIVALENT URANIUM CONCENTRATION (ppm)**

Contract: M-09678 Date: July 2009  
Scale: 1:50000 Drawing: GR-07-356-PRE  
Drawing by: A. Beaudoin, tech. Processed by: O. Létourneau, Phys.  
Checked by: R. Paul, Eng. Approved by: R. Paul, Eng.

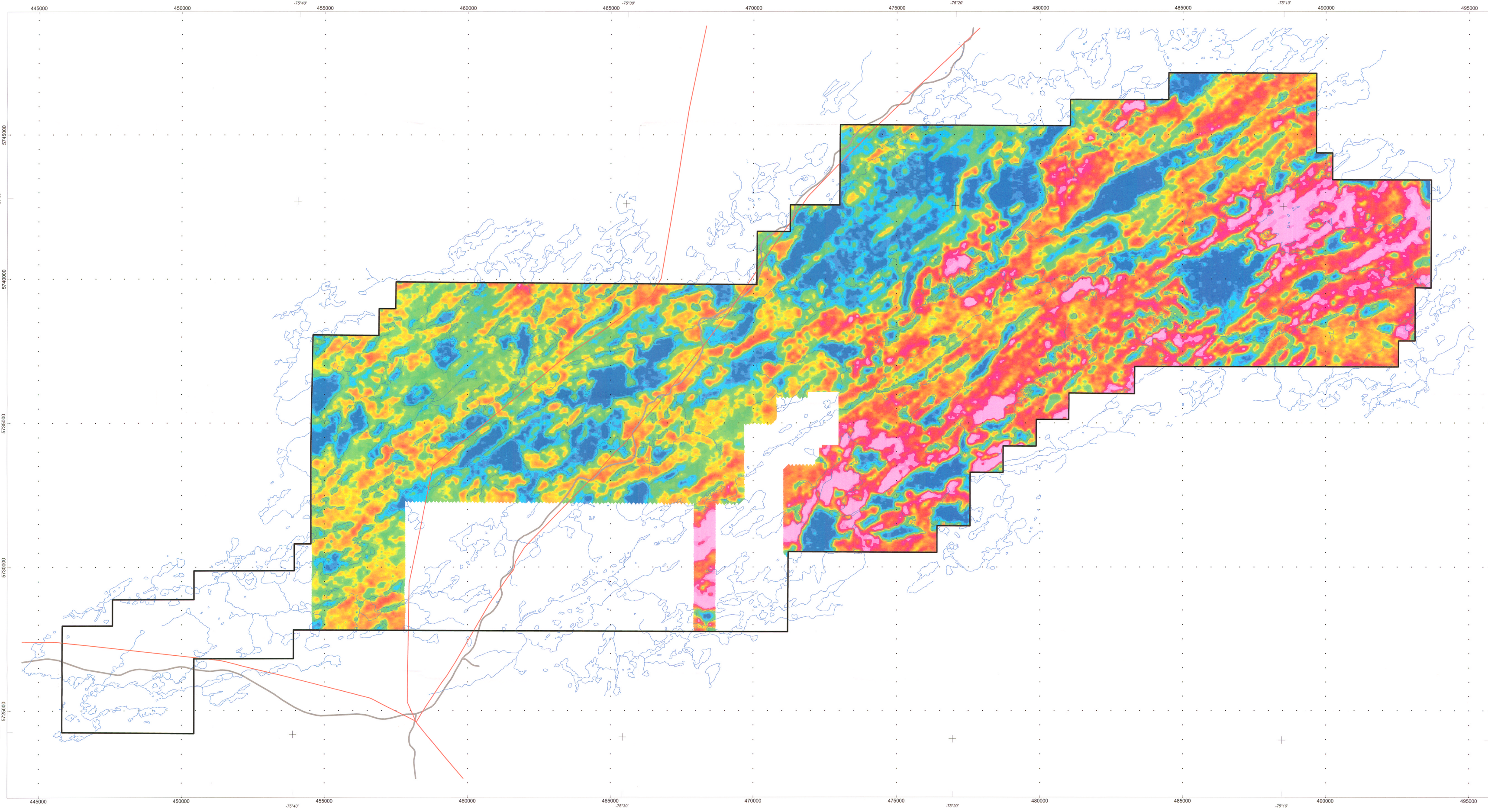
**GEOPHYSICS GPR INTERNATIONAL INC.**

#847534

Inc.: 75.4°  
Dec.: -16.8°

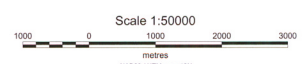
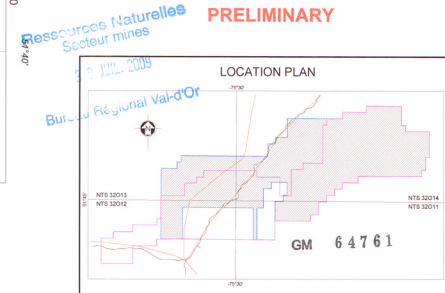


Equivalent Thorium Concentration (ppm)



- SURVEY SPECIFICATIONS**
- Line spacing: 125 m
  - Mean terrain clearance: 49 m (± 6 m)
  - Line direction: N-S
  - Tie-line direction: E-W
  - Survey date: June 15th to 26th, 2009
  - Line kilometers: 3115.4 km
- GEODEIC SPECIFICATIONS**
- Map projection: UTM
  - Datum: NAD-83 (Canada Mean)
  - UTM zone: 18 north
  - Central meridian: 69° west
- AIRCRAFT**
- Robinson R44 Helicopter, callign: C-GATM
  - Aircraft elevation (MTI): 60 m (nominal)
  - Average aircraft speed: 27.8 m/s
  - GPS receiver: Omnistar differential GPS
  - GPS sample rate: 1 s
- AIRBORNE GAMMA-RAY SPECTROMETER SPECIFICATIONS**
- Model: RSX-5 RADIATION SOLUTIONS
  - Resolution: 256 channels
  - Five NaI crystal detectors, each with individual electronics, for a total of 16.8 litres of downward looking crystals and 4.2 upward looking crystals
  - Energy spectra from 36 keV to 3 MeV with linearity correction
  - Data sampling rate: 1 Hz
  - Signal sampling: 25 MHz by internal 12 bit ADC for each detector
  - Pulse rate per detector: > 60000 pulses per second with negligible dead time
  - Channel capacity: 65500 counts/sampling period
  - Operating temperature range: -10° to +55° Celsius
- RADAR SPECIFICATIONS**
- Model: TRA-3000 TRU-40
  - Radar installation: helicopter
  - Radar accuracy: 1.5 m
- PROCESSING SPECIFICATIONS**
- Log correction
  - Deadline correction
  - Energy calibration
  - Window elements
  - Aircraft and cosmic background correction
  - Radon removal using upward looking crystal method
  - Stripping correction
  - Height correction
  - Conversion to equivalent concentration

#844534



**LEGEND**

- SURVEY LIMITS
- LAKE
- ROAD
- POWER LINE

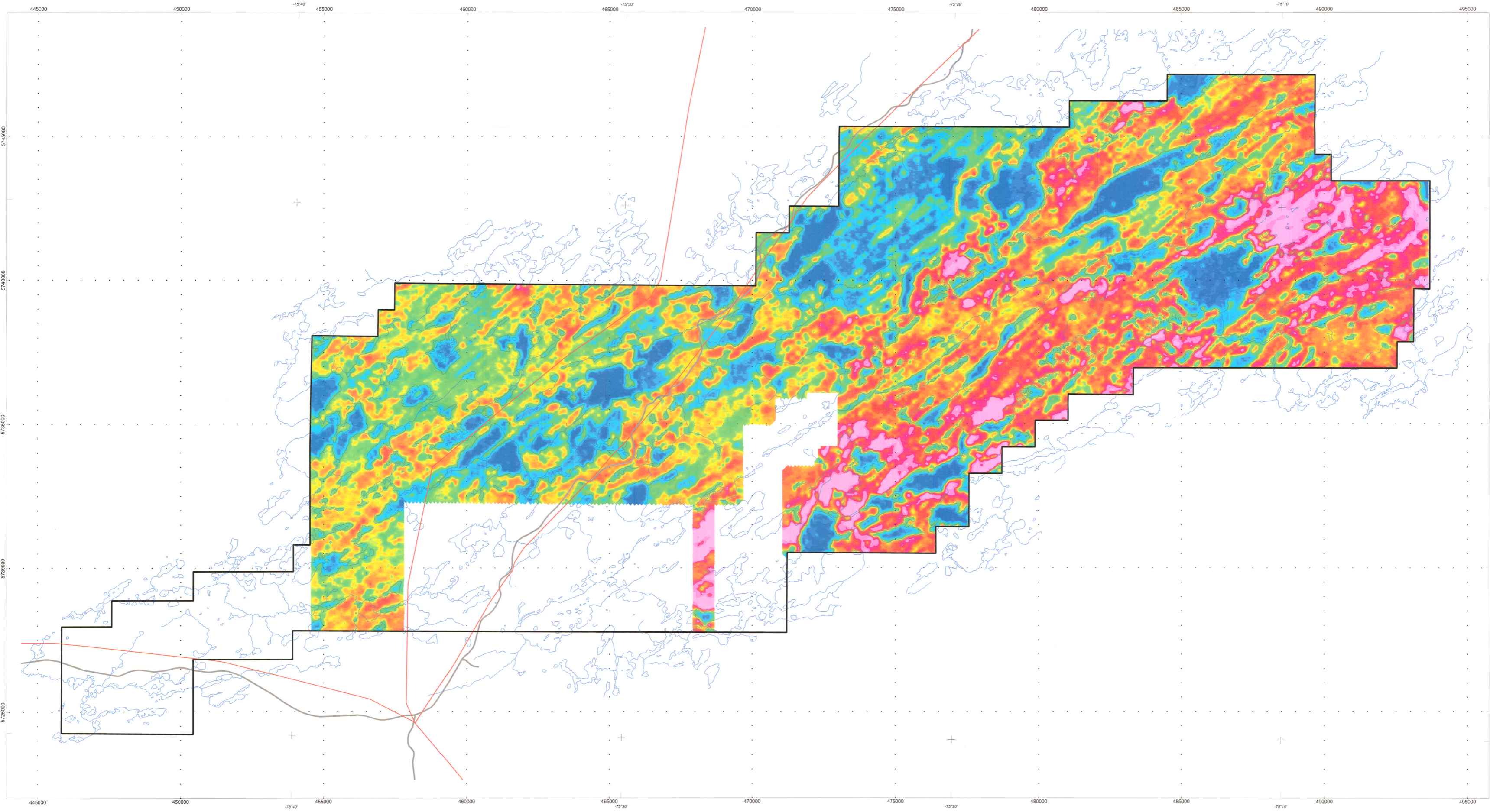
**EXPLORATION NEMISCAU INC.**

**NEMISCAU'S PROJECT**  
**HELICOPTER BORNE GEOPHYSICAL SURVEY**  
**EQUIVALENT THORIUM CONCENTRATION (ppm)**

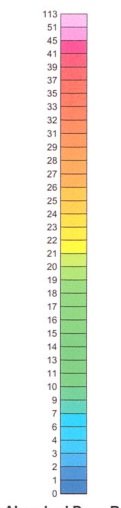
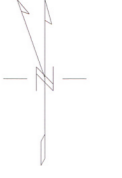
Contract: M-09678 Date: July 2009  
 Scale: 1:50000 Drawing: 09-07-357-PPE  
 Drawing by A. Beaudoin, tech. Processed by O. Létourneau, Phys.  
 Checked by R. Paul, Eng. Approved by R. Paul, Eng.

**GEOPHYSICS GPR INTERNATIONAL INC.**

#837753



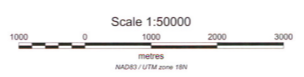
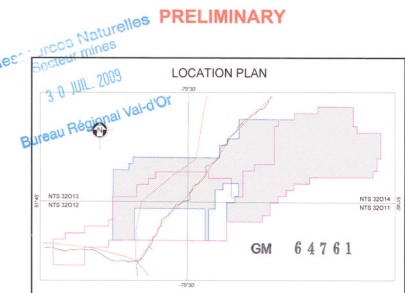
Inc.: 75.4°  
Dec.: -16.8°



Air Absorbed Dose Rate  
(nGy/h)

- SURVEY SPECIFICATIONS**
- Line spacing: 125 m
  - Mean terrain clearance: 49 m (± 6 m)
  - Line direction: N-S
  - Tie-line direction: E-W
  - Survey date: June 19th to 26th, 2009
  - Line kilometers: 3115.4 km
- GEODETC SPECIFICATIONS**
- Map projection: UTM
  - Datum: NAD-83 (Canada Mean)
  - UTM zone: 18 north
  - Central meridian: 69° west
- AIRCRAFT**
- Robinson R44 Helicopter, callign: C-GATM
  - Aircraft elevation (MTO): 60 m (nominal)
  - Average aircraft speed: 27.8 m/s
  - GPS receiver: Omnistar differential GPS
  - GPS sample rate: 1 s
- AIRBORNE GAMMA-RAY SPECTROMETER SPECIFICATIONS**
- Model: RSX-5 RADIATION SOLUTIONS**
- Resolution: 256 channels
  - Five NaI crystal detectors, each with individual electronics, for a total of 16.8 litres of downward looking crystals and 4.2 upward looking crystals
  - Energy spectra from 36 keV to 3 MeV with linearity correction
  - Data sampling rate: 1 Hz
  - Signal sampling: 25 MHz by internal 12 bit ADC for each detector
  - Pulse rate per detector: > 60000 pulses per second with negligible dead time
  - Channel capacity: 65500 counts/sampling period
  - Operating temperature range: -10° to +55° Celsius
- RADAR SPECIFICATIONS**
- Model: TRA-3000 / TRX-40**
- Radar installation: helicopter
  - Radar accuracy: 1.5 m
- PROCESSING SPECIFICATIONS**
- Lag correction
  - Deadtime correction
  - Energy calibration
  - Window elements
  - Aircraft and cosmic background correction
  - Radon removal using upward looking crystal method
  - Stripping correction
  - Height correction
  - Conversion to equivalent concentration

#844534



- LEGEND**
- SURVEY LIMITS
  - LAKE
  - ROAD
  - POWER LINE

**EXPLORATION NEMASKA INC.**

**NEMISCAU'S PROJECT**

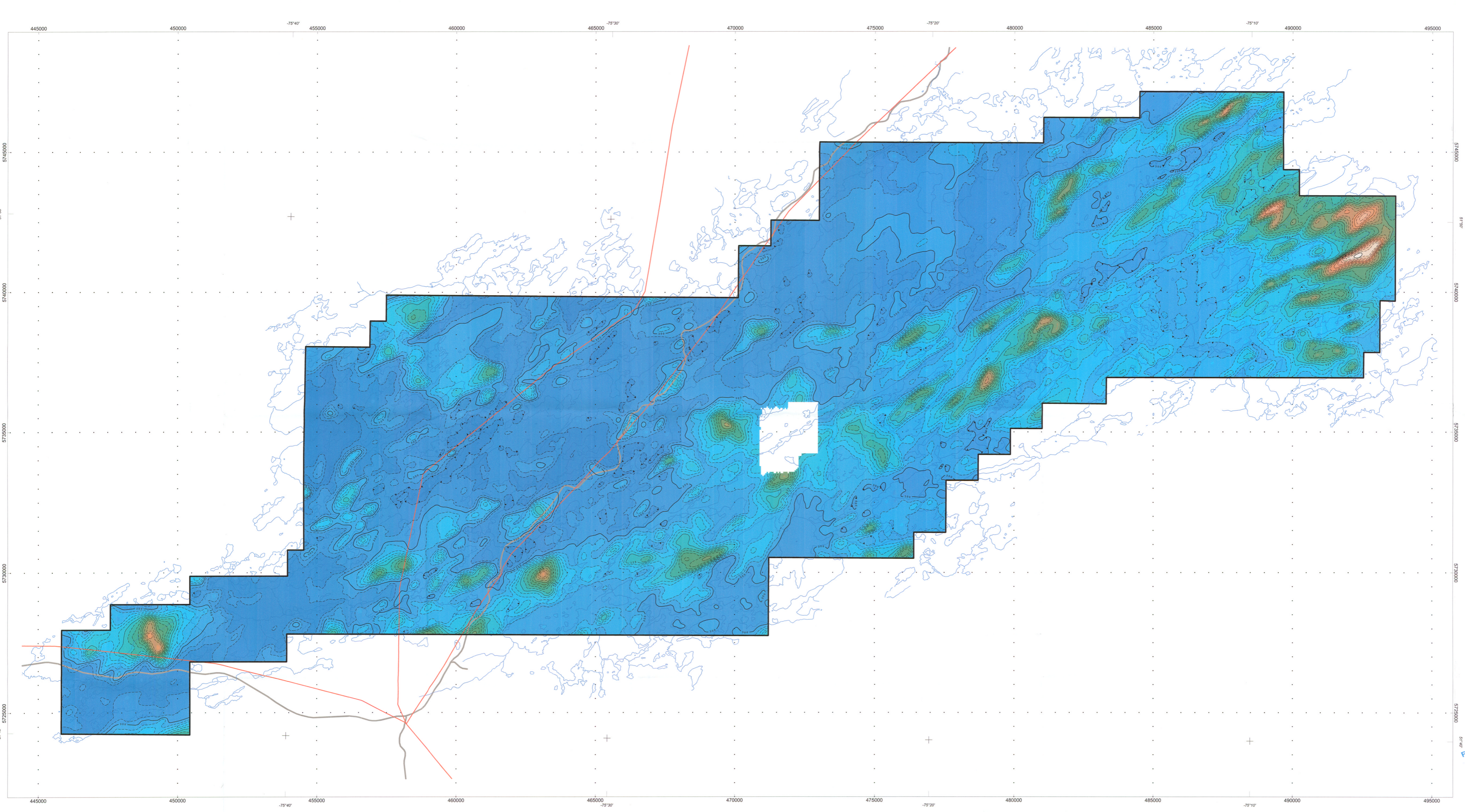
**HELICOPTER BORNE GEOPHYSICAL SURVEY**

**AIR ABSORBED DOSE RATE DERIVED FROM TOTAL COUNTS (nGy/h)**

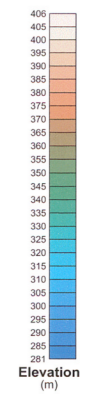
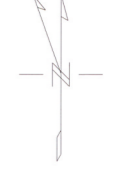
Contract: M-56676 Date: July 2009  
Scale: 1:50000 Drawing: 09-07-350-PRB  
Drawing by A. Beaudoin, tech. Processed by O. Létourneau, Phys.  
Checked by R. Paul, Eng. Approved by R. Paul, Eng.

**GEOPHYSICS GPR INTERNATIONAL INC.**

# 837753



Inc.: 75.4°  
Dec.: -16.8°



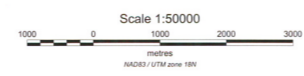
**SURVEY SPECIFICATIONS**  
 -Line spacing: 62.5 and 125 m  
 -Mean terrain clearance: 30 m (± 6 m)  
 -Line direction: N-S  
 -Tail-line direction: E-W  
 -Survey date: June 5th to 26th, 2009  
 -Line kilometres: 6410.4 km

**GEODETIC SPECIFICATIONS**  
 -Map projection: UTM  
 -Datum: NAD-83  
 -UTM zone: 18 north  
 -Central meridian: 69° west

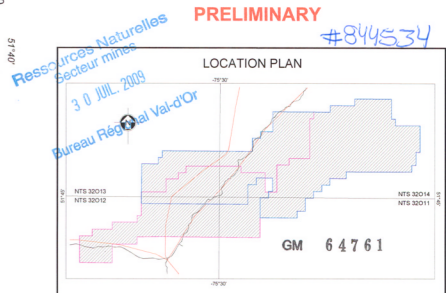
**AIRCRAFT**  
 -Robinson R44 Helicopter callign: C-GATM  
 -Aircraft elevation (MTC): 60 m (nominal)  
 -Average aircraft speed: 27.8 and 34.7 m/s  
 -GPS receiver: Trimble differential GPS  
 -GPS sample rate: 1 s

**RADAR SPECIFICATIONS**  
 -Model: TRX-3000 / TR-40  
 -Radar installation: Helicopter  
 -Radar accuracy: 1.5 m

**PROCESSING SPECIFICATIONS**  
 -Digital Terrain Model obtained by subtracting the radar altimeter from the GPS height above ellipsoid.



- LEGEND**
- INTERVAL CONTOUR 5 m
  - INTERVAL CONTOUR 25 m
  - INTERVAL CONTOUR 100 m
  - SURVEY LIMITS
  - LAKE
  - ROAD
  - POWER LINE



**EXPLORATION NEMISCAU INC.**

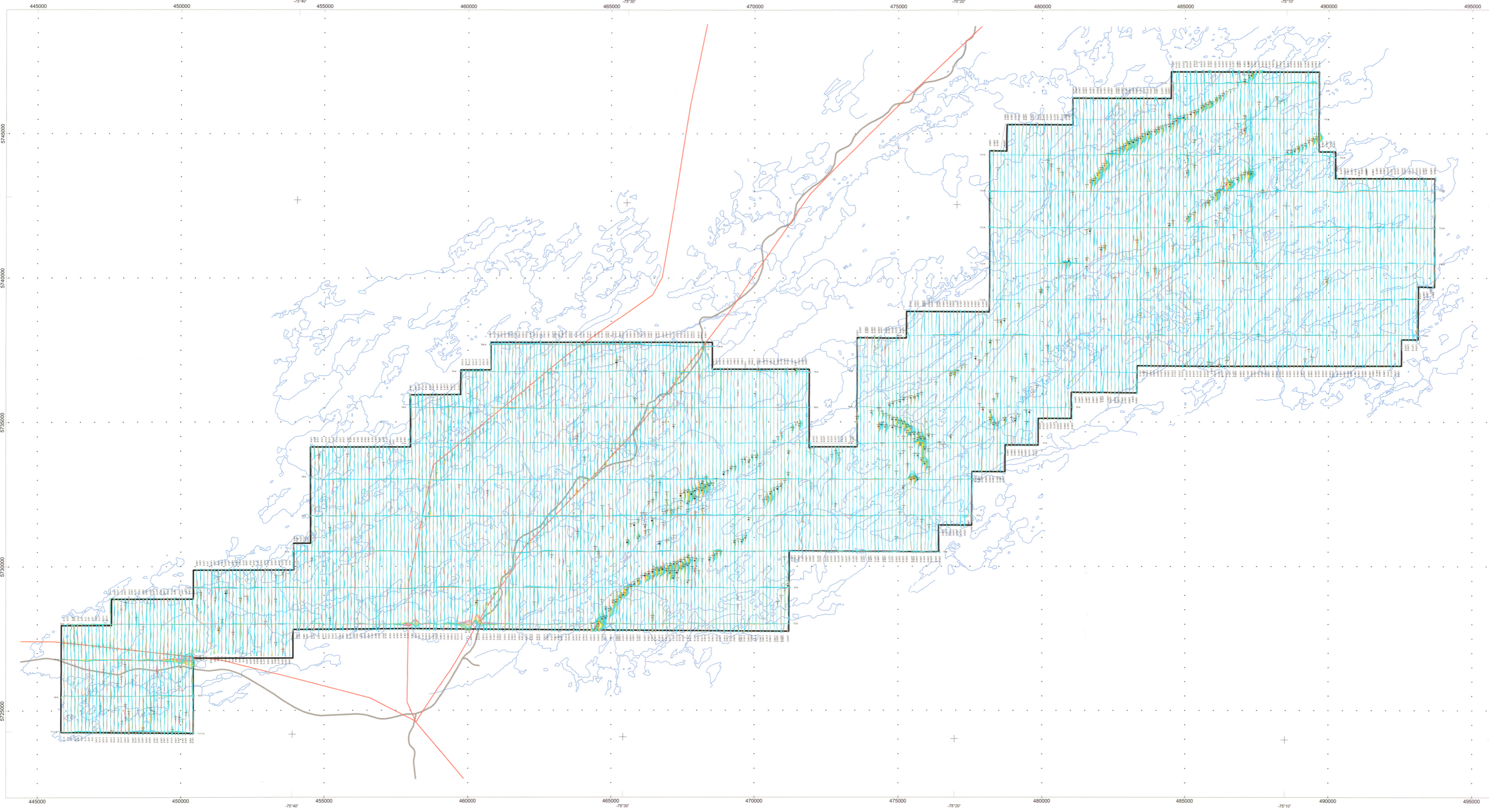
**NEMISCAU PROJECT**  
**HELICOPTER BORNE GEOPHYSICAL SURVEY**  
**DIGITAL TERRAIN MODEL (m)**

Contract: M-06678 Date: July 2009  
 Scale: 1:50000 Drawing: 08-07-358-FRG  
 Drawing by A. Beaudoin, tech. Processed by O. Letourneau, Phys.  
 Checked by R. Paul, Eng. Approved by R. Paul, Eng.

**GEOPHYSICS GPR INTERNATIONAL INC.**

# 637753

Inc.: 75.4°  
Dec.: -16.8°



- INTERPRETATION LEGEND**
- Tau > 5ms
  - ◄ Tau 3.5 - 5ms
  - ◄ Tau 2 - 3.5ms
  - ◄ Tau 1 - 2ms
  - Tau < 1ms
  - ⊕ Possible anomaly
  - Cultural source
  - xxx Anomaly ID
  - Anomaly ID



**SURVEY SPECIFICATIONS**

- Line spacing: 125 m
- Mean terrain clearance: 49 m (± 6 m)
- Line direction: N-S
- Tie-line direction: E-W
- Survey date: June 5th to 26th, 2009
- Line kilometres: 3295 km

**GEODETIC SPECIFICATIONS**

- Map projection: UTM
- Datum: NAD-83 (Canada Mean)
- UTM zone: 18 north
- Central meridian: 69° west

**AIRCRAFT**

- Robinson R44 Helicopter, callign: C-GATM
- Aircraft elevation (MTC): 60 m (nominal)
- Average aircraft speed: 34.7 m/s
- GPS receiver: Trimble differential GPS
- GPS sample rate: 1 s

**TDEM SPECIFICATIONS**

- Model: PROSPEC TEM
- 4 kw generator in transmitter
- Alternating 2.75 ms half-sine pulses intervening off-time 13.916ms
- 1000 samples of transmitter current and response per half cycle (60Hz)
- Cut off rate: 10 Hz (10 on-time, 30 off-time)
- 1024 on 2048 samples/channel (4) half-cycle
- 0.1 stacking integration
- Vertical component receiver in bird above transmitter

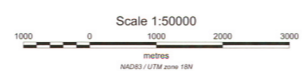
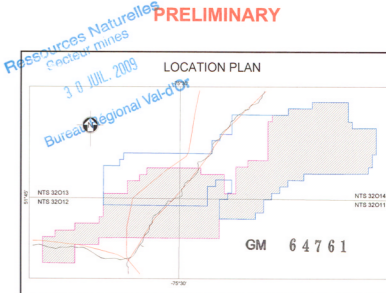
**RADAR SPECIFICATIONS**

- Model: TRA-3000 / TRI-40
- Radar installation: helicopter
- Radar accuracy: 1.5 m

**PROCESSING SPECIFICATIONS**

- Stacking
- Windowing
- Finite impulse response (FIR) Filtering
- Band-pass filtering
- Time constant Computing (TAU)
- Manually picking anomalies

# 844534



- LEGEND**
- SURVEY LIMITS
  - LAKE
  - ROAD
  - POWER LINE

**EXPLORATION NEMASKA INC.**

**NEMISCAU'S PROJECT**

**HELICOPTER BORNE GEOPHYSICAL SURVEY**

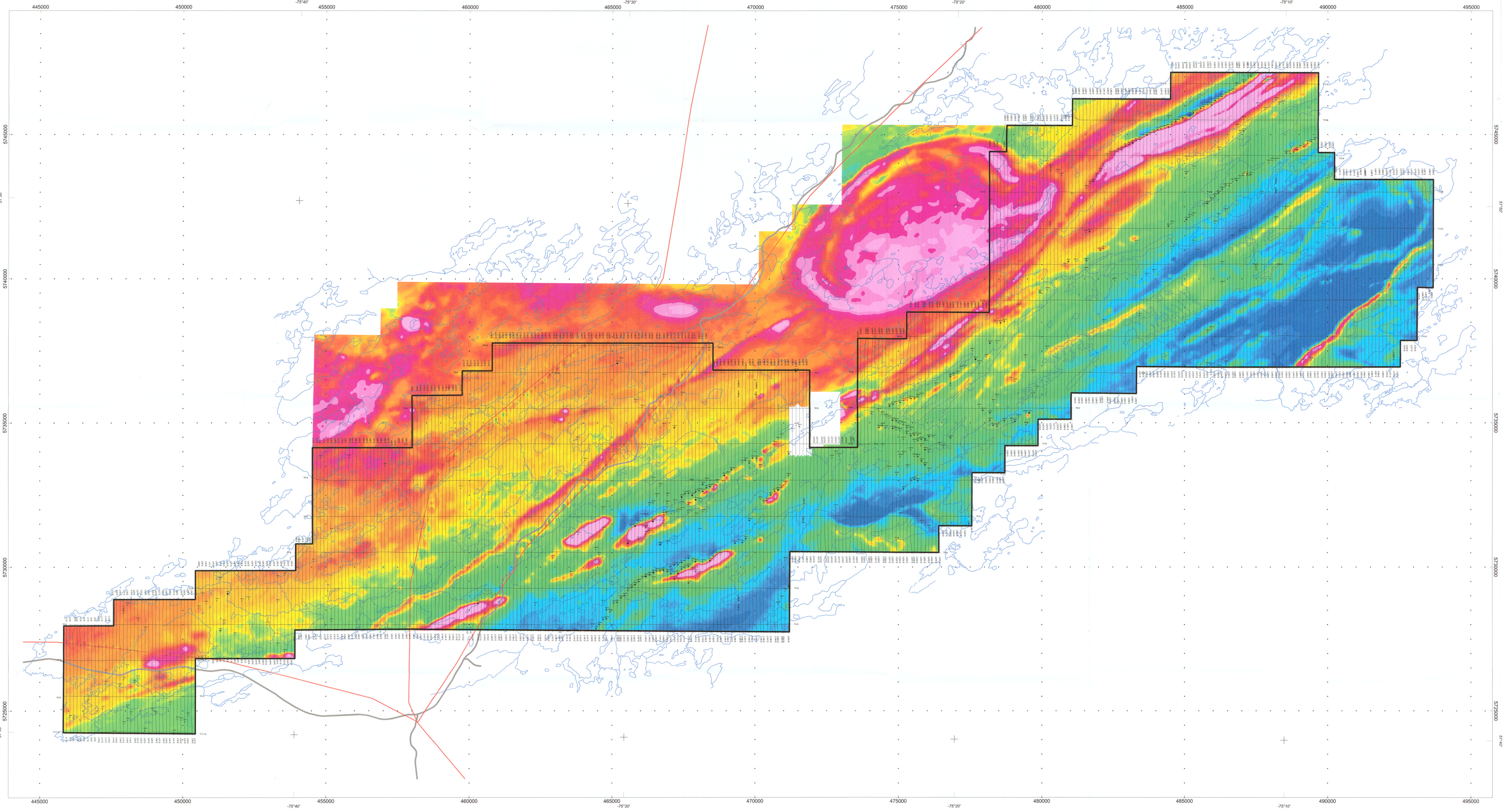
**PROFILE EM**

Contract: M-09678 Date: July 2009  
Scale: 1:50000 Drawing: 09-07-360-PRÉ  
Drawing by A. Beaudoin, tech. Processed by M. Boivin, P. Geo.  
Checked by R. Paul, Eng. Approved by R. Paul, Eng.

**GEOPHYSICS GPR INTERNATIONAL INC.**

# 837753

Inc.: 75.4°  
Dec.: -16.8°



- INTERPRETATION LEGEND**
- Tau > 5ms
  - Tau 3.5 - 5ms
  - Tau 2 - 3.5ms
  - Tau 1 - 2ms
  - Tau < 1ms
  - Possible anomaly
  - Cultural source
- ANOMALY
- Anomaly ID

**SURVEY SPECIFICATIONS**

- Line spacing: 125 m
- Mean terrain clearance: 49 m (± 6 m)
- Line direction: N-S
- Tie-line direction: E-W
- Survey date: June 5th to 26th, 2009
- Line kilometers: 3295 km

**GEODETTIC SPECIFICATIONS**

- Map projection: UTM
- Datum: NAD-83 (Canada Mean)
- UTM zone: 18 north
- Central meridian: 69° west

**AIRCRAFT**

- Robinson R44 Helicopter, callign: C-GATM
- Aircraft elevation (MFC): 60 m (nominal)
- Average aircraft speed: 34.7 m/s
- GPS receiver: Trimble differential GPS
- GPS sample rate: 1 s

**TEM SPECIFICATIONS**

- Model: PROSPEC TEM
- 4 kw generator in transmitter
- Alternating 2.75 ms half-sine pulses intervening off-time 13.916ms
- Out put rate: 10 Hz (10 on-time; 30 off-time)
- 1024 on 2048 samples/ channel (4) half-cycle
- O.I.: stacking integration
- Vertical component receiver in bird above transmitter

**RADAR SPECIFICATIONS**

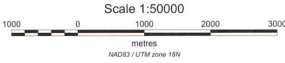
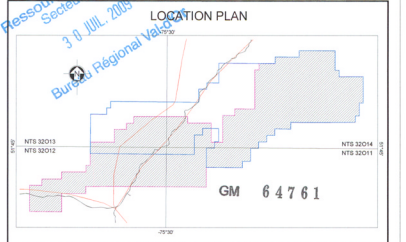
- Model: TRA-3000 / TR-40
- Radar installation: helicopter
- Radar accuracy: 1.5 m

**PROCESSING SPECIFICATIONS**

- Stacking
- Windowing
- Finite impulse response (FIR) Filtering
- Band-pass filtering
- Time constant computing (TAU)
- Manually picking anomalies

# 844534

**PRELIMINARY**



- LEGEND**
- SURVEY LIMITS
  - LAKE
  - ROAD
  - POWER LINE

**EXPLORATION NEMASKA INC.**

**NEMISCAU'S PROJECT**  
**HELICOPTER BORNE GEOPHYSICAL SURVEY**  
**INTERPRETATION EM**

Contract: M-09576 Date: July 2009  
Scale: 1:50000 Drawing: 09-07-361-PRE  
Drawing by A. Beaudoin, tech. Processed by M. Bolvin, P. Geo.  
Checked by R. Paul, Eng. Approved by R. Paul, Eng.

**GEOPHYSICS GPR INTERNATIONAL INC.**

# 837753