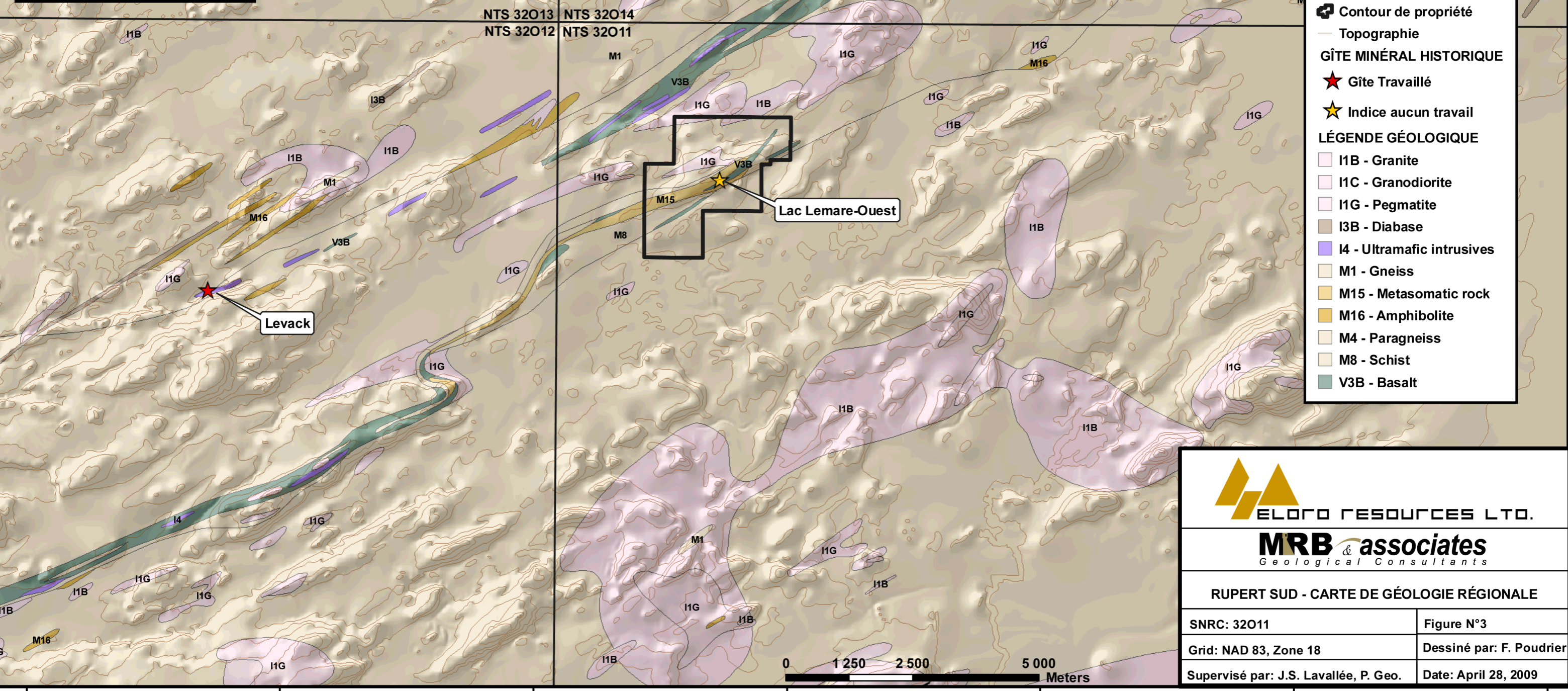
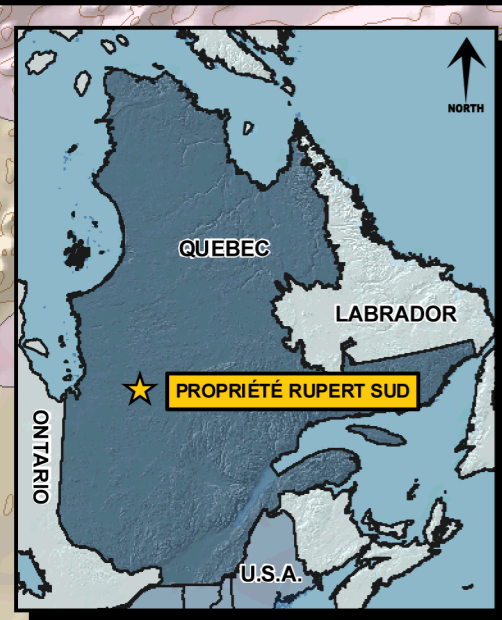


455 000 460 000 465 000 470 000 475 000 480 000 485 000



LEGEND

- SNRC
- ⊕ Contour de propriété
- Topographie
- GÎTE MINÉRAL HISTORIQUE**
- ★ Gîte Travaillé
- ☆ Indice aucun travail
- LÉGENDE GÉOLOGIQUE**
- I1B - Granite
- I1C - Granodiorite
- I1G - Pegmatite
- I3B - Diabase
- I4 - Ultramafic intrusives
- M1 - Gneiss
- M15 - Metasomatic rock
- M16 - Amphibolite
- M4 - Paragneiss
- M8 - Schist
- V3B - Basalt

ELOFO RESOURCES LTD.

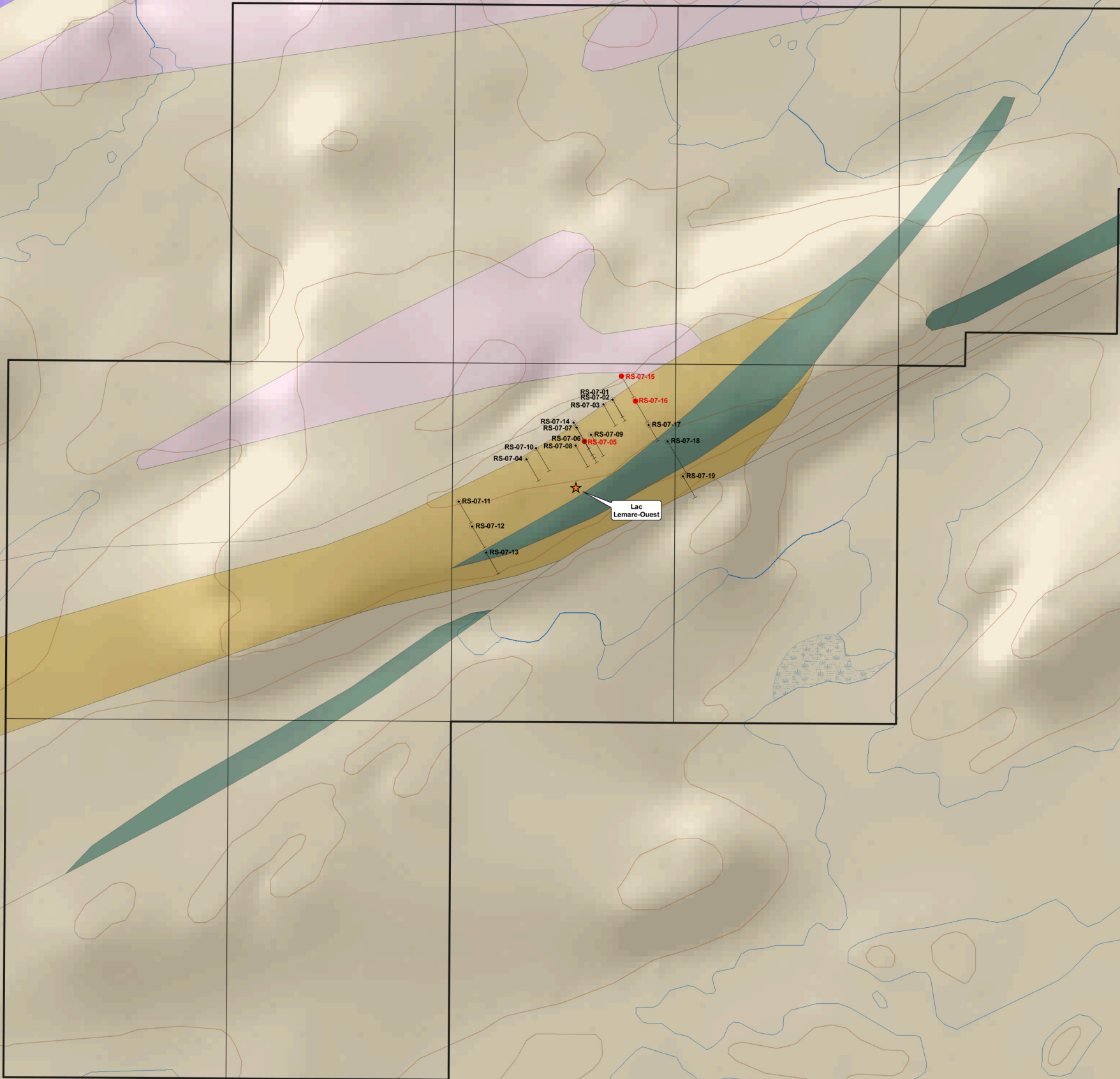
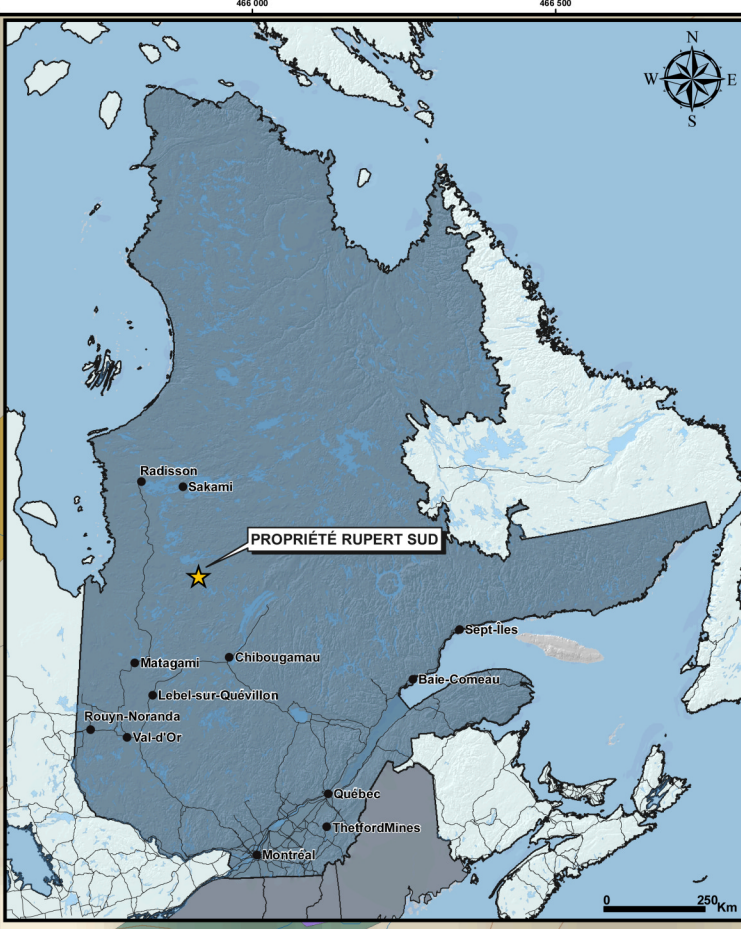
MRB & associates
Geological Consultants

RUPERT SUD - CARTE DE GÉOLOGIE RÉGIONALE

SNRC: 32011	Figure N°3
Grid: NAD 83, Zone 18	Dessiné par: F. Poudrier
Supervisé par: J.S. Lavallée, P. Geo.	Date: April 28, 2009

455 000 460 000 465 000 470 000 475 000 480 000 485 000





LEGEND

FORAGE À DIAMANT

- Forage déclaré rapport de travaux 2008
- ✦ Forage déclaré rapport de travaux 2009
- ★ Gîte minéral historique

Lignes de transport

- Ligne de transmission
- Route principale
- Route secondaire

Topographie

- Topographie

Lac

- Lac

Rivière

- Rivière

Marécage

- Marécage

LEGENDE GÉOLOGIQUE

- I1B - Granite
- I1G - Pegmatite
- I4 - Ultramafic intrusives
- M1 - Gneiss
- M15 - Metasedimentary rock
- M16 - Amphibolite
- M4 - Paragneiss
- M8 - Schist
- V3B - Basalt

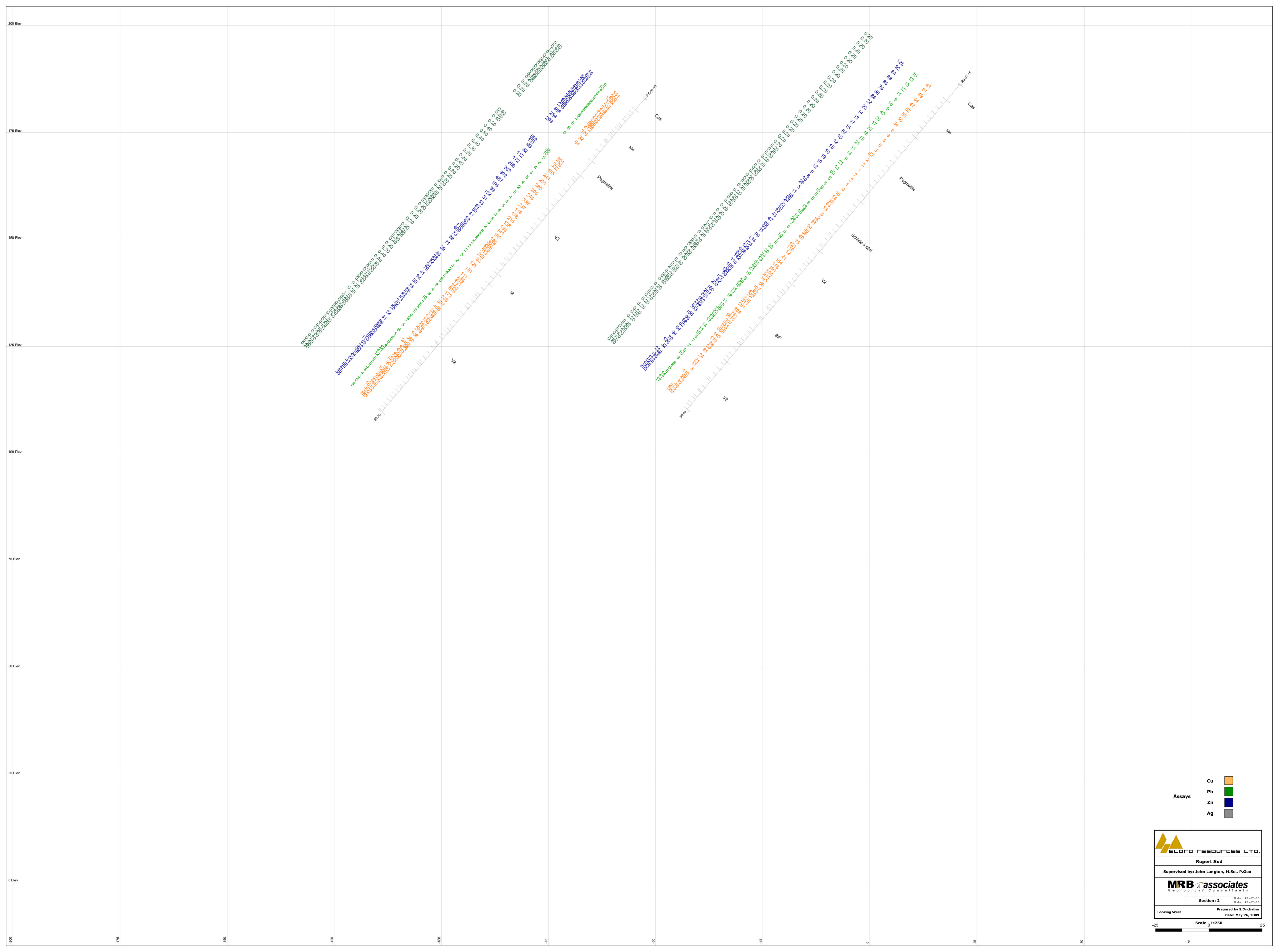
ELORO RESOURCES LTD.

MRB & associates
Geological Consultants

RUPERT SUD - CARTE DE COMPILATION DES FORAGES

SNRC: 32O11	Carte N°1
Grid: NAD 83, Zone 18	Dessiné par: F. Poudrier
Supervisé par: J.S. Lavallée, P. Geo.	Date: 21 août, 2009

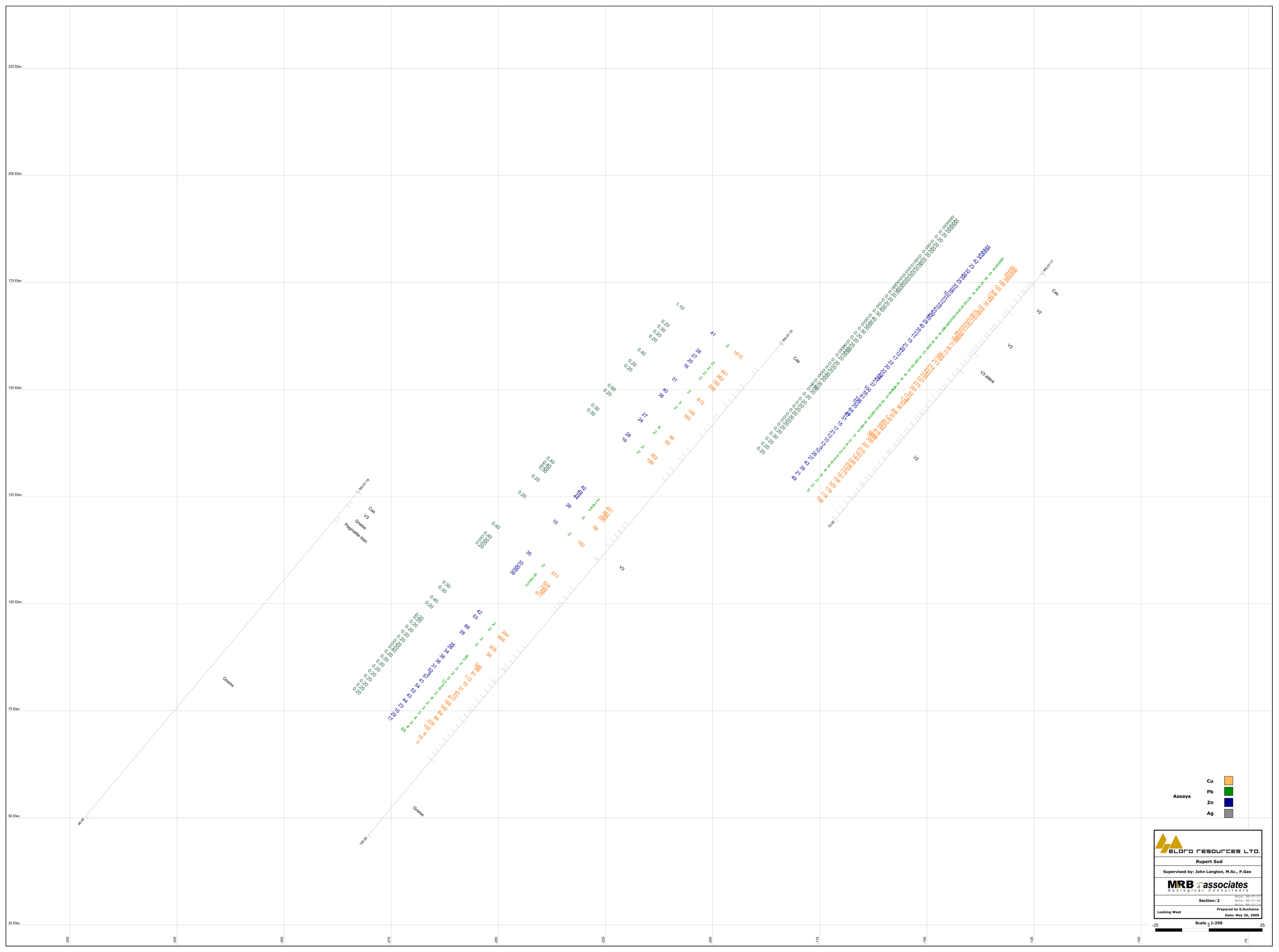




Assays

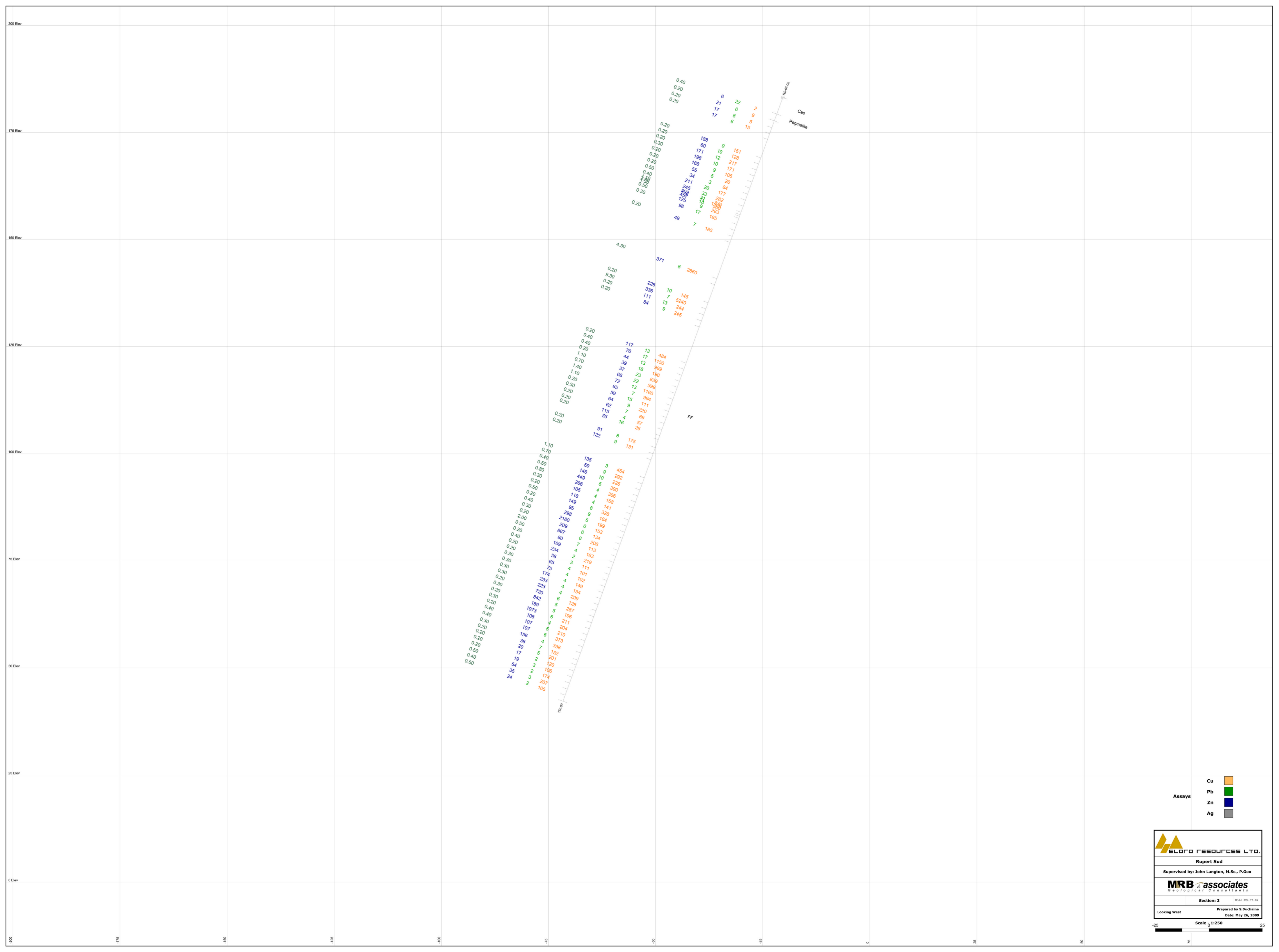
- Cu ■
- Pb ■
- Zn ■
- Ag ■

ELORO RESOURCES L.T.O.	
Rupert Sud	
Supervised by: John Langton, M.Sc., P.Geo	
MRB & associates <i>Geological Consultants</i>	
Section: 2	Hole: RB-07-15
Looking West	Hole: RB-07-16
Scale 1:250	Prepared by: S.Duchaine
	Date: May 26, 2009



Assays
 Cu ■
 Pb ■
 Zn ■
 Ag ■

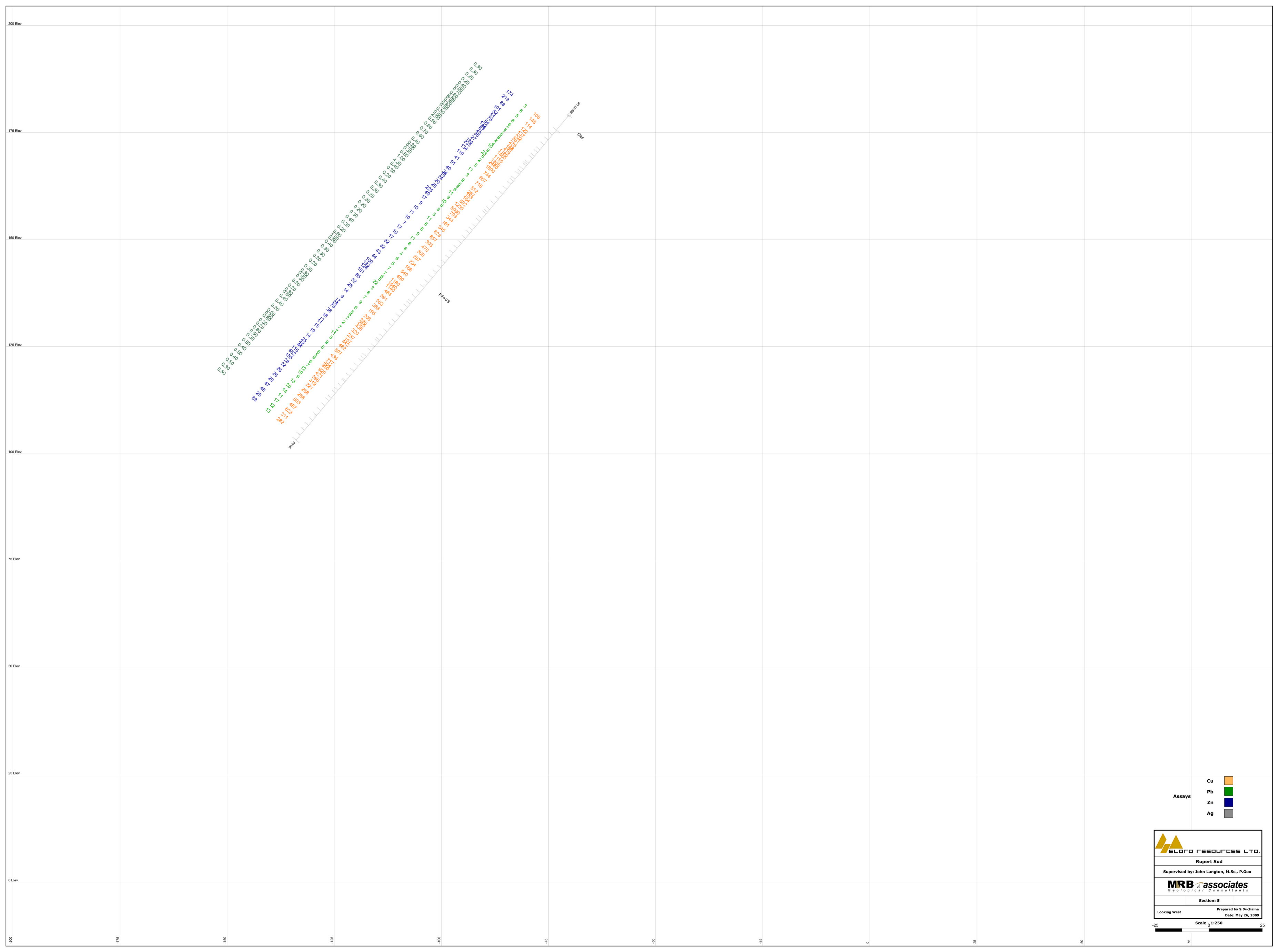
ELORO RESOURCES LTD.
 Rupert Sud
 Supervised by: John Langton, M.Sc., P.Geo
MRB & associates
 Geological Consultants
 Section: 2
 Looking West
 Prepared by: S. Duchaine
 Date: May 26, 2009
 Scale 1:250



Assays

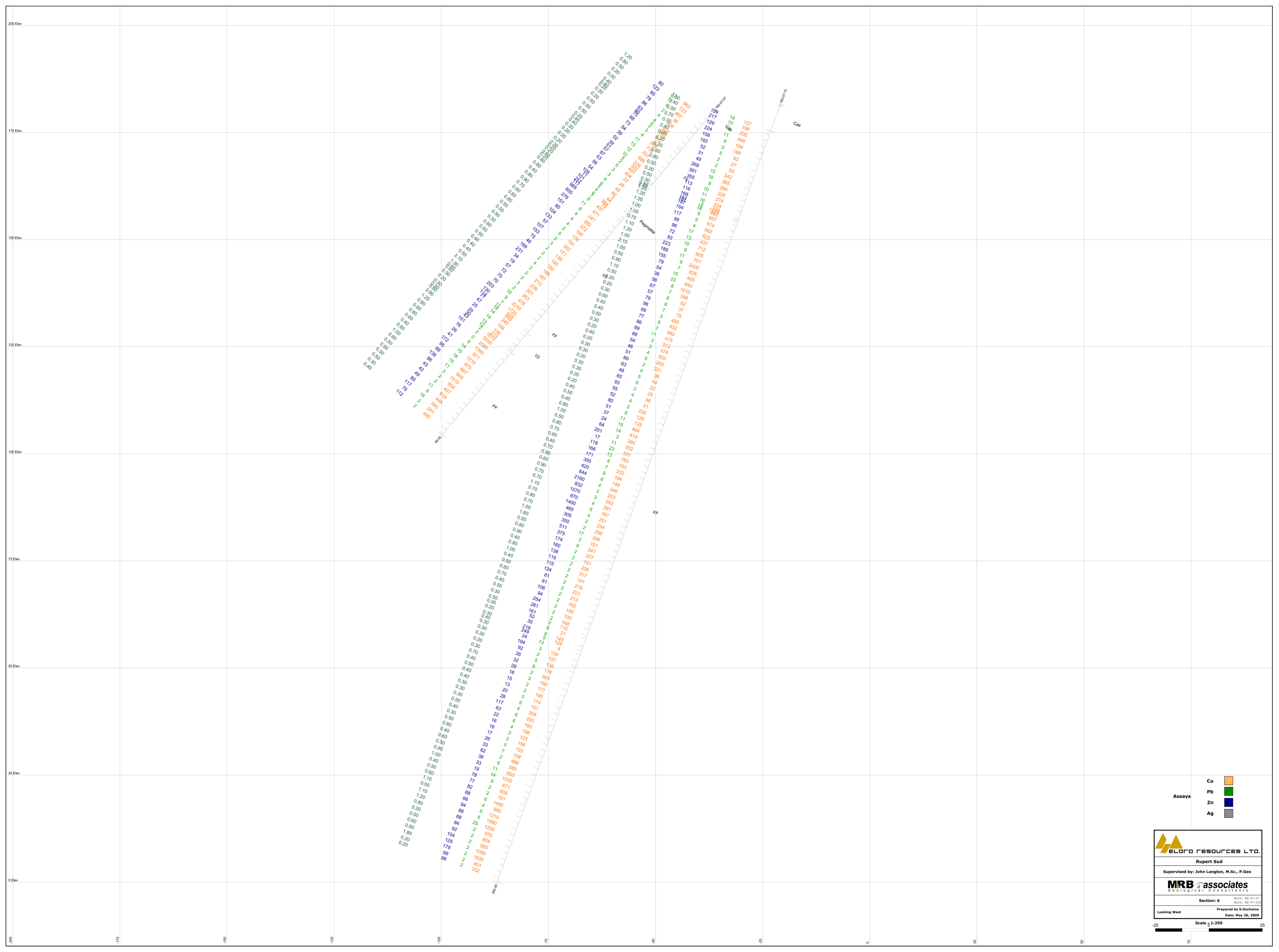
- Cu ■
- Pb ■
- Zn ■
- Ag ■

ELORO RESOURCES L.T.O.	
Rupert Sud	
Supervised by: John Langton, M.Sc., P.Geo	
MRB & associates <i>Geological Consultants</i>	
Section: 3	M01e-R0-07-03
Looking West	Prepared by: S.Duchaine Date: May 26, 2009
Scale 1:250	



- Assays
- Cu ■
 - Pb ■
 - Zn ■
 - Ag ■

Rupert Sud	
Supervised by: John Langton, M.Sc., P.Geo	
Section: 5	
Looking West	Prepared by: S. Duchaine Date: May 26, 2009
Scale 1:250	

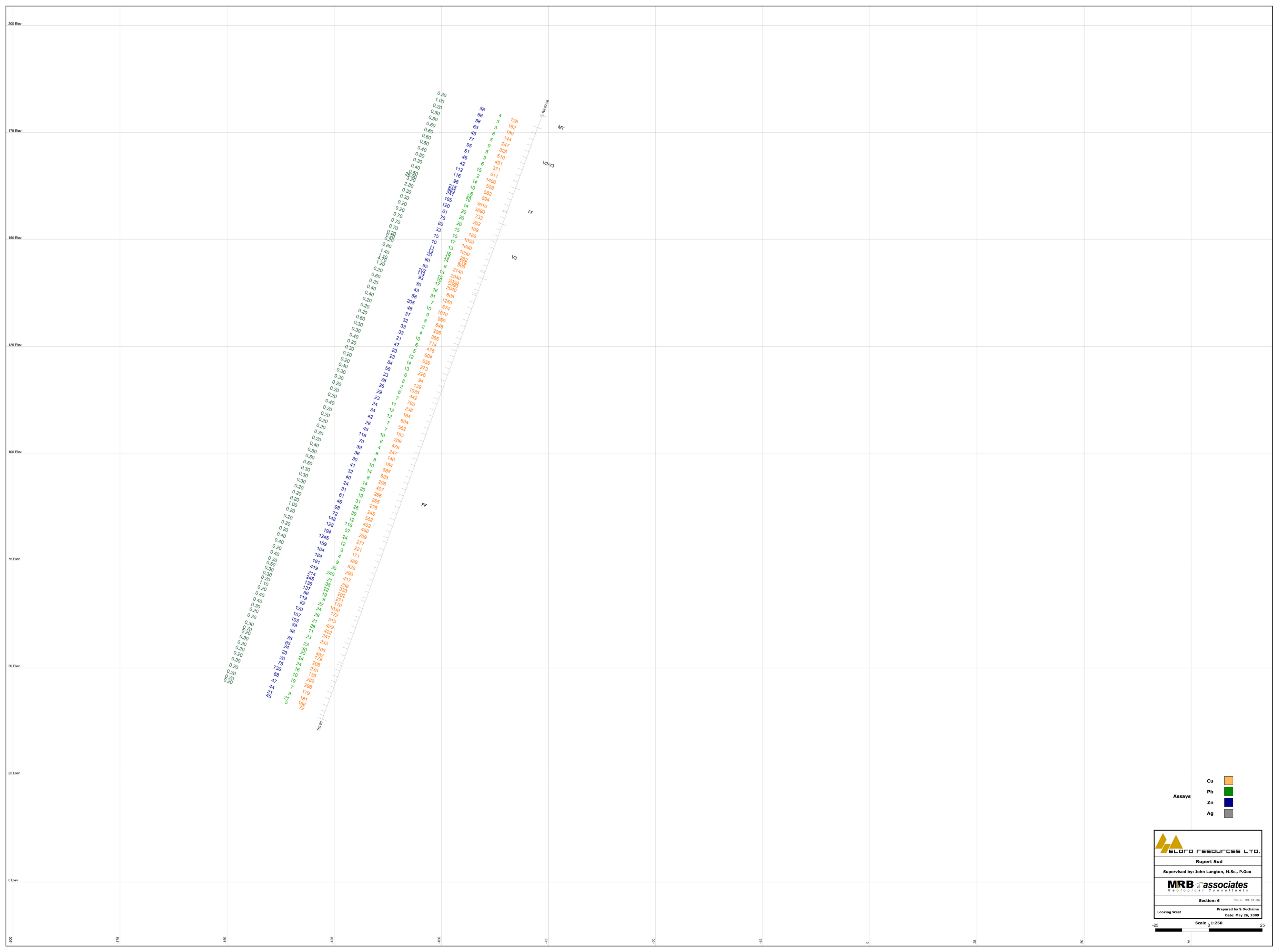


Assays

- Cu ■
- Pb ■
- Zn ■
- Ag ■

ELOFO RESOURCES LTD.	
Rupert Sud	
Supervised by: John Langton, M.Sc., P.Geo	
MRB associates <i>Geological Consultants</i>	
Section: 6	Wol: RB-07-07 Wol: RB-07-01A
Looking West	Prepared by: S.Duchaine Date: May 26, 2009

Scale 1:250



Assays

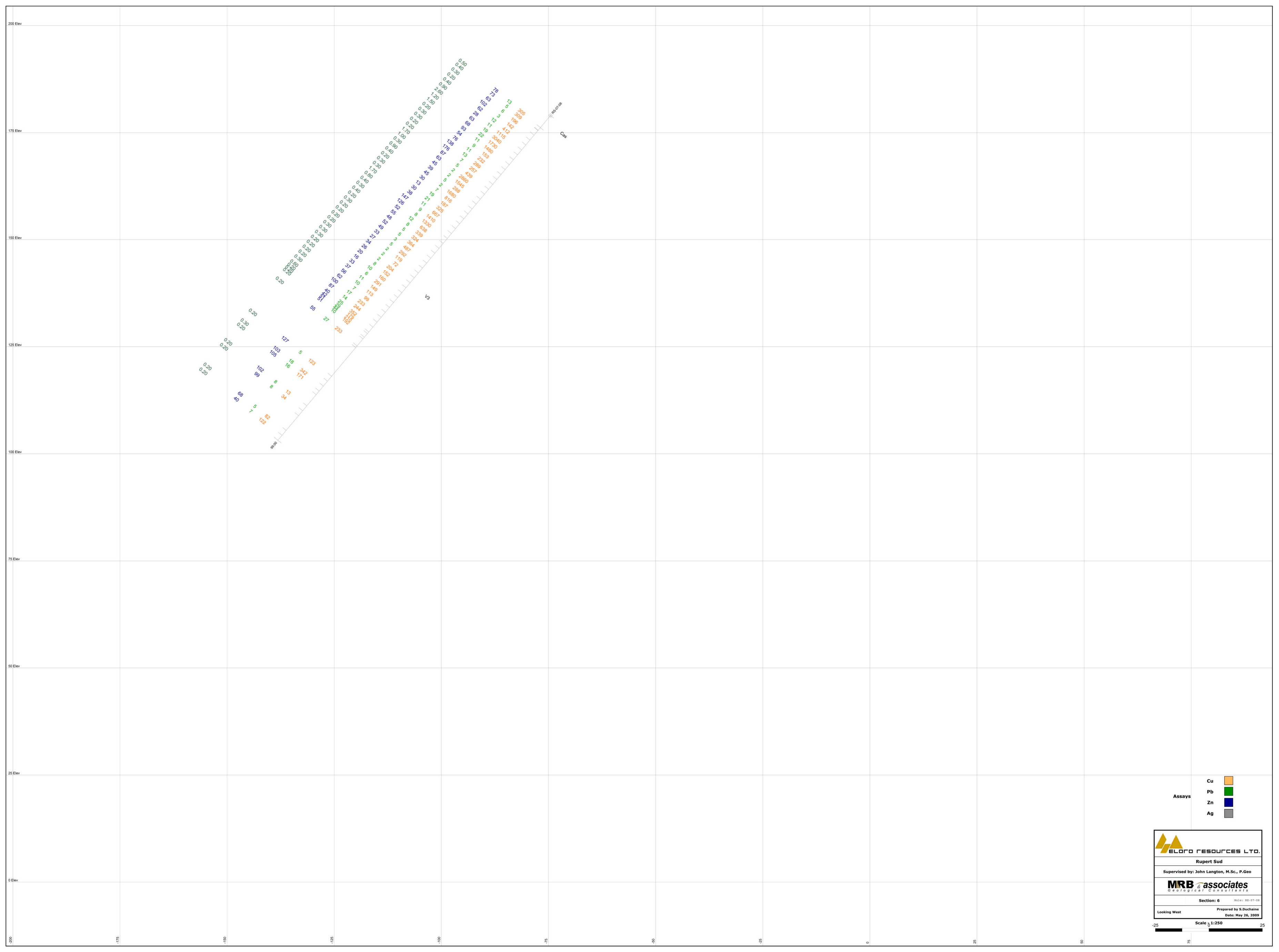
- Cu ■
- Pb ■
- Zn ■
- Ag ■

ELOFO RESOURCES LTD.
 Rupert Sud
 Supervised by: John Langton, M.Sc., P.Geo

MRB & associates
 Geological Consultants

Section: 6 Hole: RR-07-04
 Looking West Prepared by: S. Duchaine
 Date: May 26, 2009

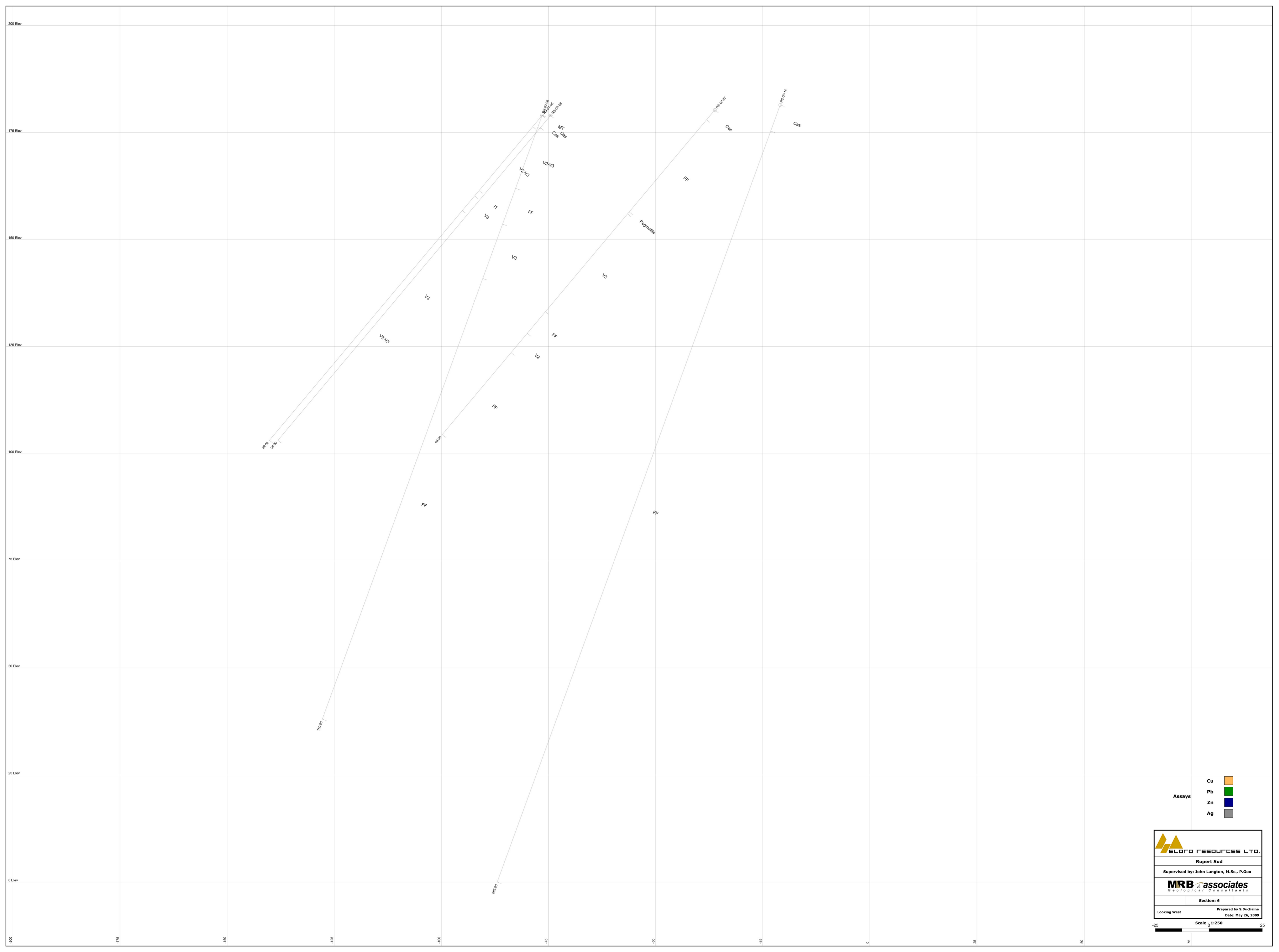
Scale 1:250




Assays

- Cu ■
- Pb ■
- Zn ■
- Ag ■

Rupert Sud	
Supervised by: John Langton, M.Sc., P.Geo	
Section: 6	Hole: 08-07-08
Looking West	Prepared by: S.Duchaine Date: May 26, 2009
Scale 1:250	



- Assays
- Cu
 - Pb
 - Zn
 - Ag



ELORO RESOURCES LTD.

Rupert Sud

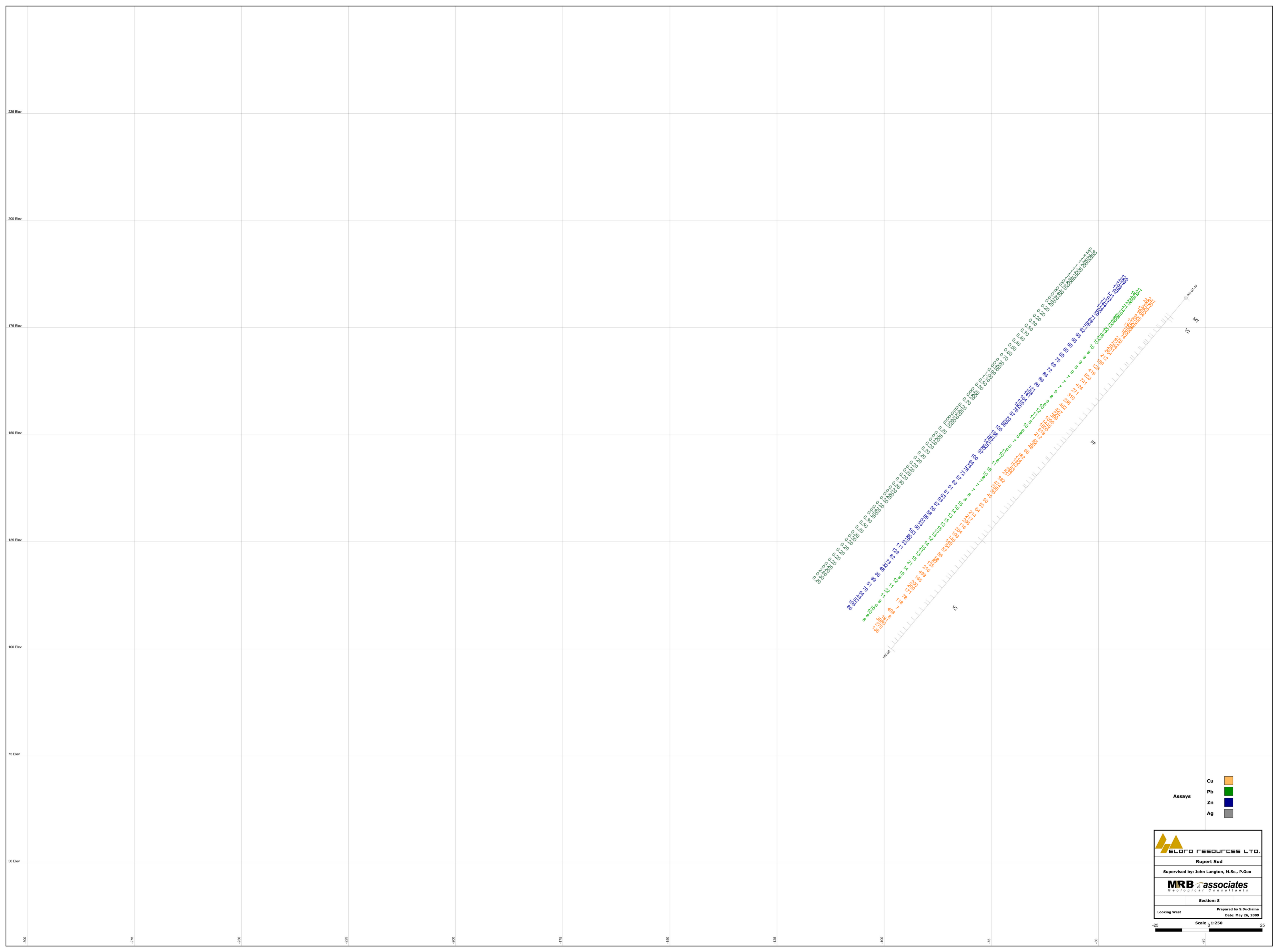
Supervised by: John Langton, M.Sc., P.Geo

MRB & associates
Geological Consultants

Section: 6

Looking West Prepared by: S. Duchaine
Date: May 26, 2009

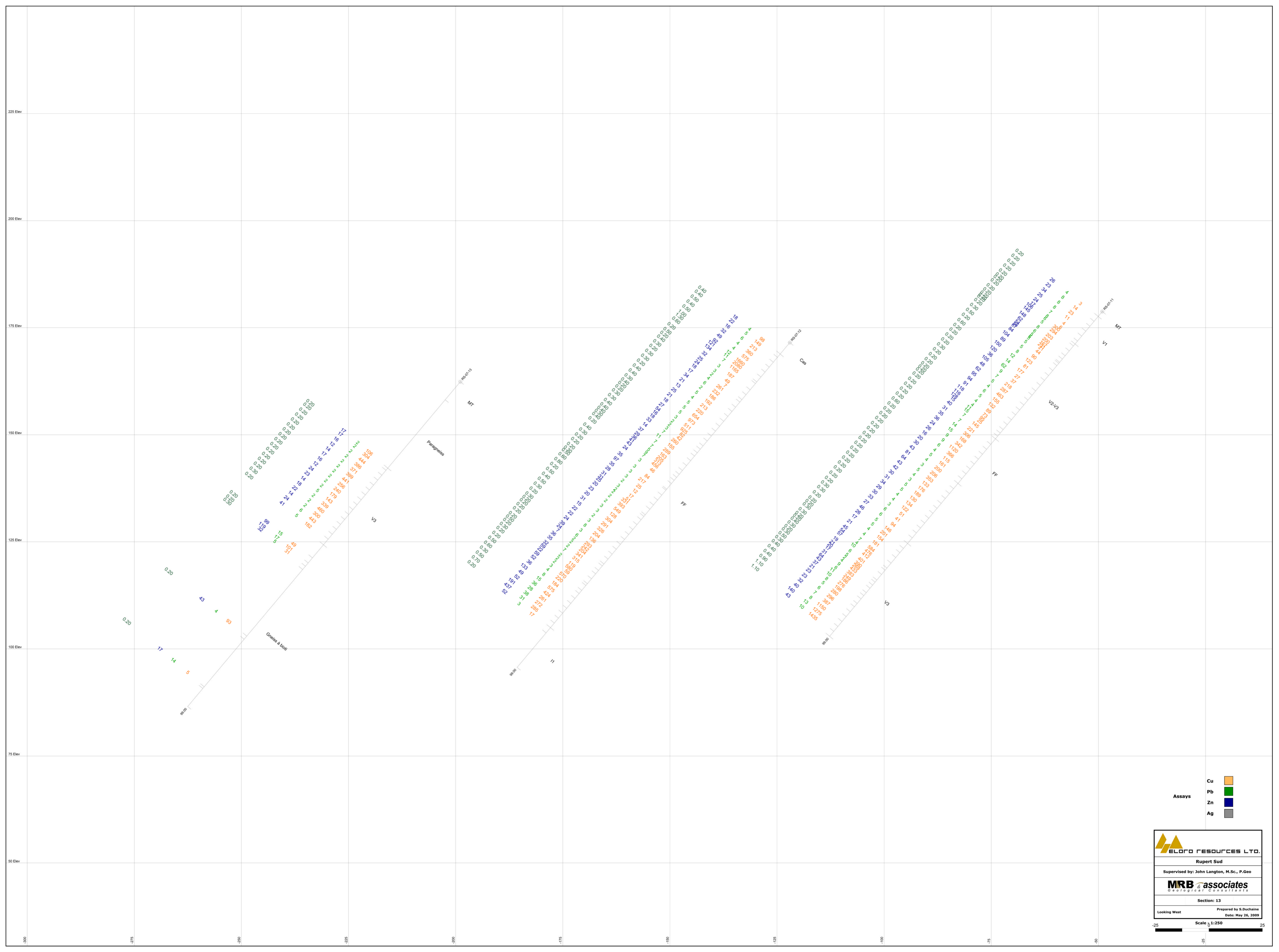
Scale 1:250



Assays

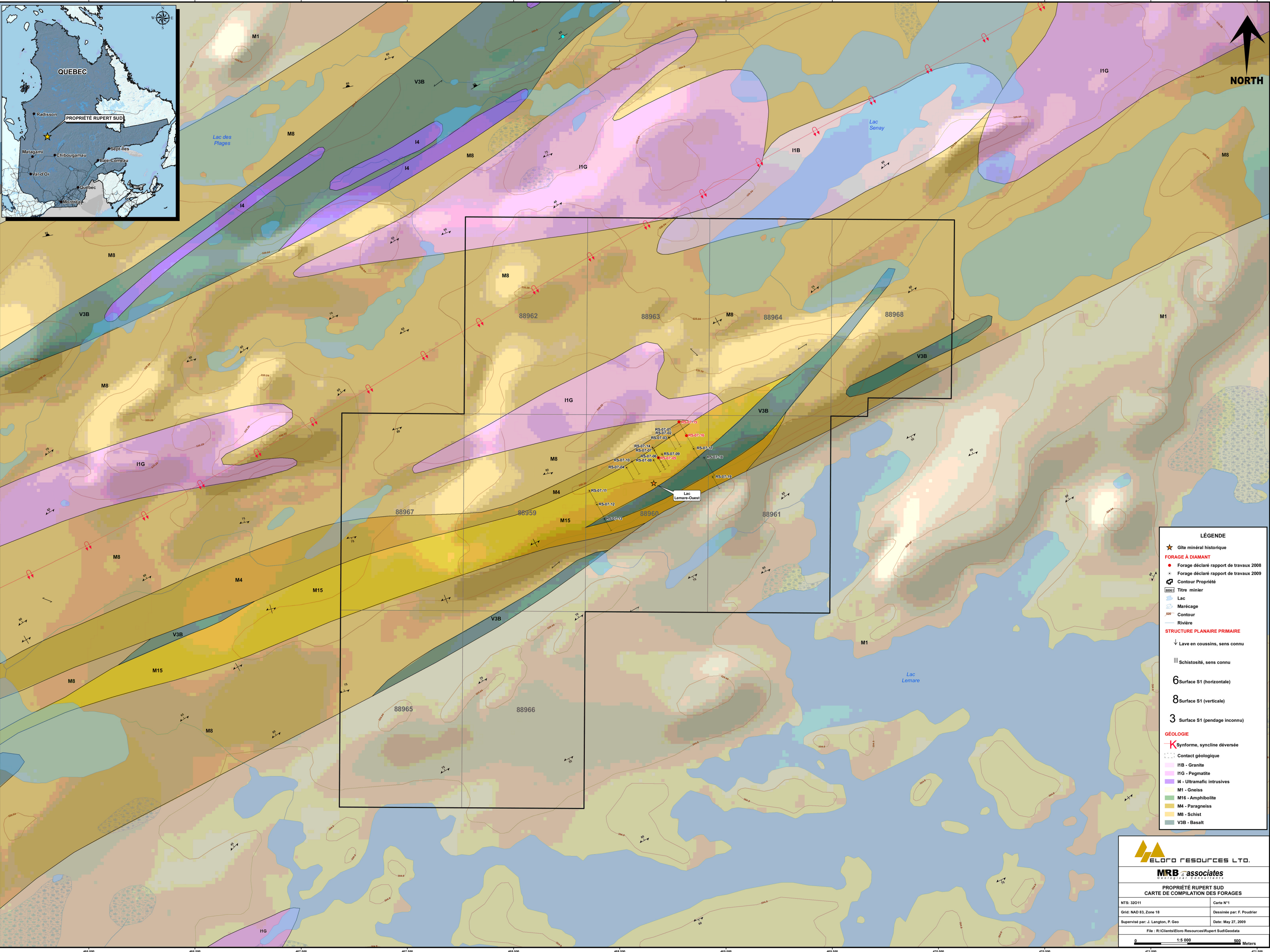
- Cu ■
- Pb ■
- Zn ■
- Ag ■

Rupert Sud	
Supervised by: John Langton, M.Sc., P.Geo	
Section: 8	
Looking West	Prepared by S.Duchaine Date: May 26, 2009
Scale 1:250	



- Assays
- Cu ■
 - Pb ■
 - Zn ■
 - Ag ■

ELORO RESOURCES L.T.O.	
Rupert Sud	
Supervised by: John Langton, M.Sc., P.Geo	
MRB & associates <i>Geological Consultants</i>	
Section: 13	Prepared by: S.Duchaine
Looking West	Date: May 26, 2009
Scale 1:250	



LÉGENDE

- ★ Gîte minéral historique
- FORAGE À DIAMANT**
- Forage déclaré rapport de travaux 2008
- Forage déclaré rapport de travaux 2009
- ⊕ Contour Propriété
- ▭ Titre minier
- ▭ Lac
- ▭ Marécage
- ▭ Contour
- ▭ Rivière
- STRUCTURE PLANAIRE PRIMAIRE**
- ∨ Lave en coussins, sens connu
- ||| Schistosité, sens connu
- 6 Surface S1 (horizontale)
- 8 Surface S1 (verticale)
- 3 Surface S1 (pendage inconnu)
- GÉOLOGIE**
- K Synforme, syncline déversée
- Contact géologique
- I1B - Granite
- I1G - Pegmatite
- I4 - Ultramafic intrusives
- M1 - Gneiss
- M16 - Amphibolite
- M4 - Paragneiss
- M8 - Schist
- V3B - Basalt

ELORO RESOURCES LTD.

MRB associates
Géologues Consultants

PROPRIÉTÉ RUPERT SUD
CARTE DE COMPILATION DES FORAGES

NTS: 32011	Carte N°1
Grid: NAD 83, Zone 18	Dessinée par: F. Poudrier
Supervisé par: J. Langton, P. Geo	Date: May 27, 2009
File: R:\Clients\Eloro Resources\Rupert Sud\Geodata	

0 1:5 000 500 Meters