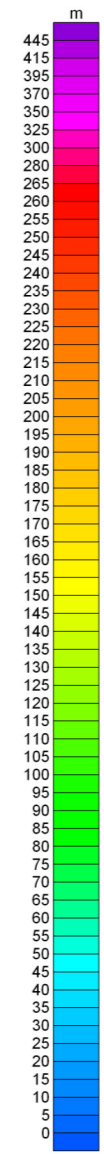


TECHNICAL SUMMARY

Navigation Differentially-corrected GPS
 Data reduction grid interval 30 metres
 Terrain clearance Helicopter, Spectrometer 50 m
 Magnetometer 50 m
 Data sampling interval 0.1 second
 Magnetometer / sensitivity Cesium / 0.01 nT
 Spectrometer GR820

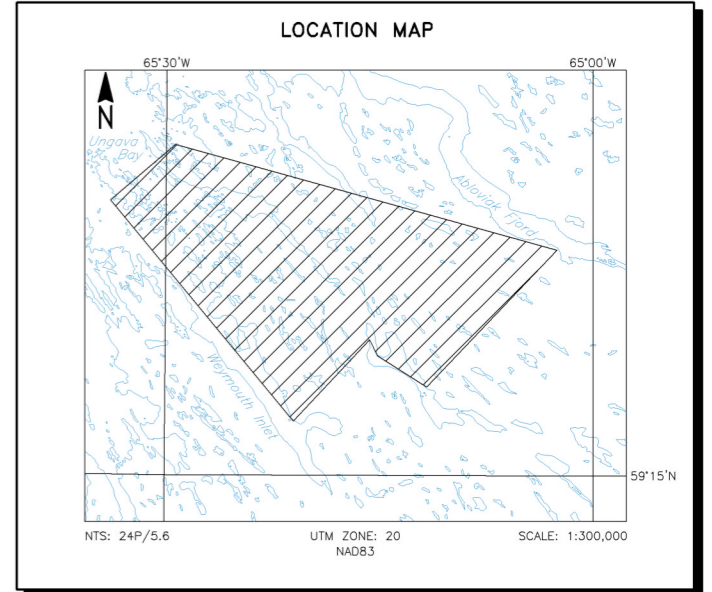


DIGITAL ELEVATION CONTOURS



This Digital Elevation Model (DEM) has been computed from GPS 'Z' values minus the aircraft altimeter data recorded during the course of a helicopter-borne geophysical survey flown at a nominal line spacing of 150 metres, azimuth 45 degrees. Elevation values have been interpolated/gridded between survey lines. Every effort has been made to make the model a useful general reference. No guarantee can be made that this model is a true representation of the height above sea level and it may contain radar altimeter responses from buildings and in some instances dense timber. Users of the product should be aware of the topographic limitations mapped herewithin.

DO NOT USE THIS MAP FOR NAVIGATION PURPOSES.

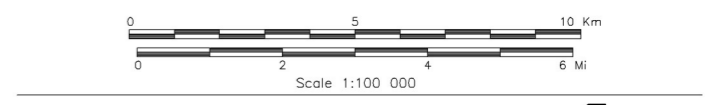


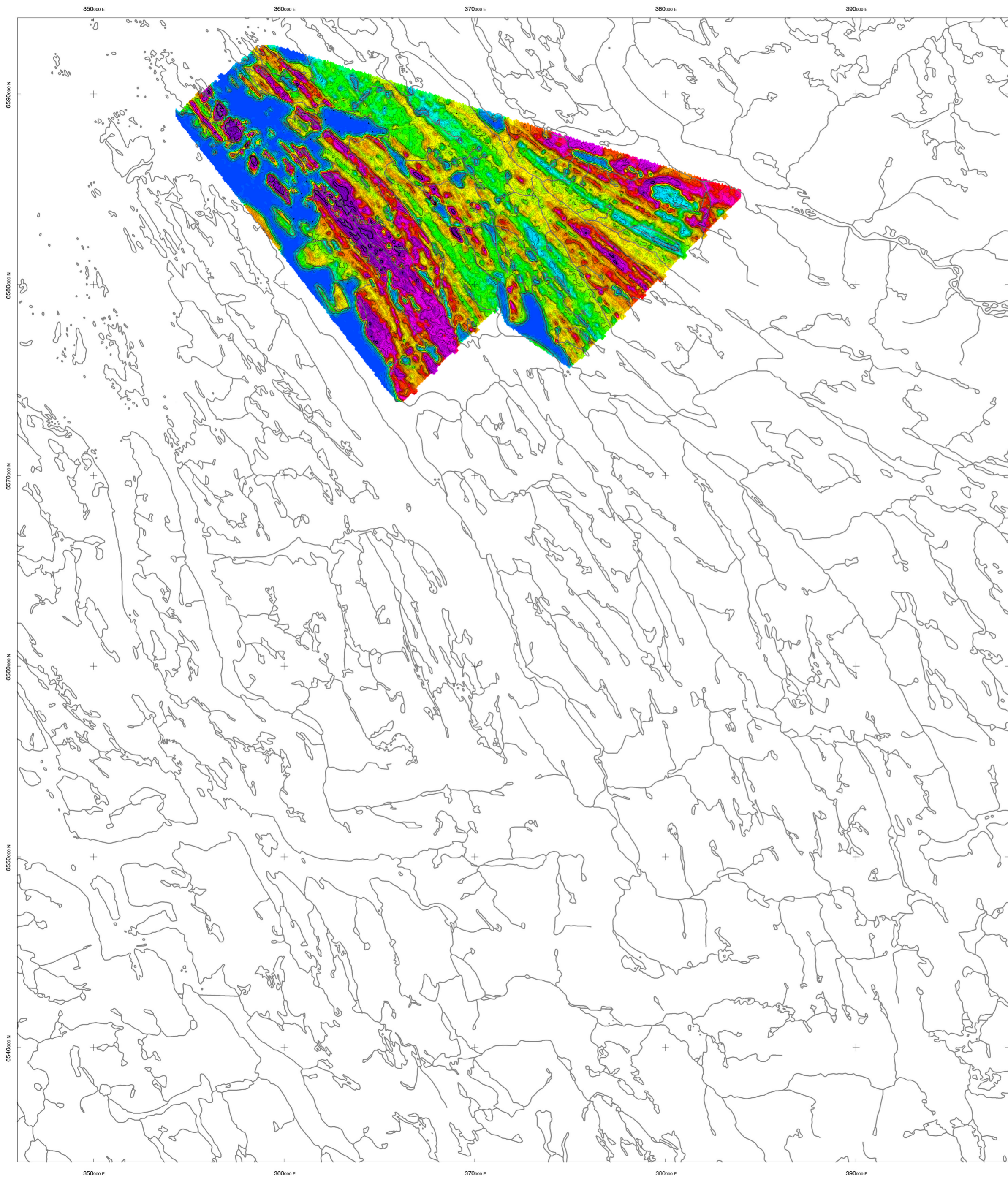
AREVA QUEBEC INC.
CAGE A AREA, QUEBEC

DIGITAL ELEVATION MODEL

FUGRO MAG/RAD SURVEY	NTS: 24P/5,6	GEOPHYSICIST:
DATE: JANUARY, 2008	JOB: 07059	SHEET: 1

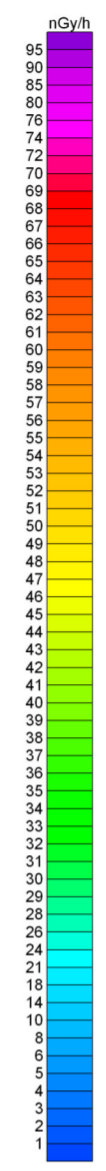
Fugro Airborne Surveys



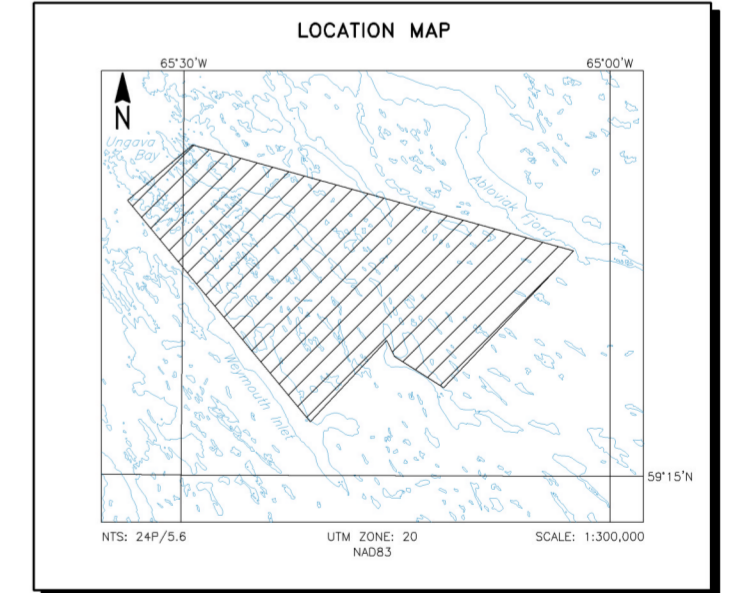
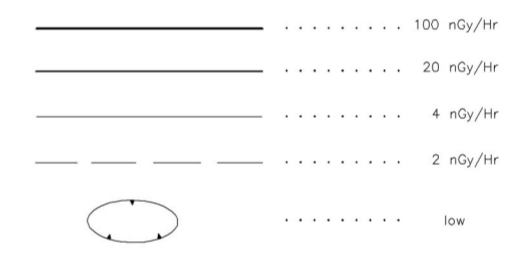


TECHNICAL SUMMARY

Navigation Differentially-corrected GPS
 Data reduction grid interval 38 metres
 Terrain clearance Helicopter, Spectrometer 50 m
 Magnetometer 50 m
 Data sampling interval 0.1 second
 Magnetometer / sensitivity Cesium / 0.01 nT
 Spectrometer GR820



CONTOUR INTERVALS

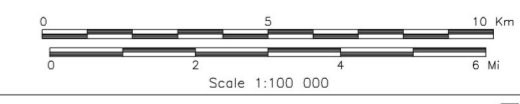


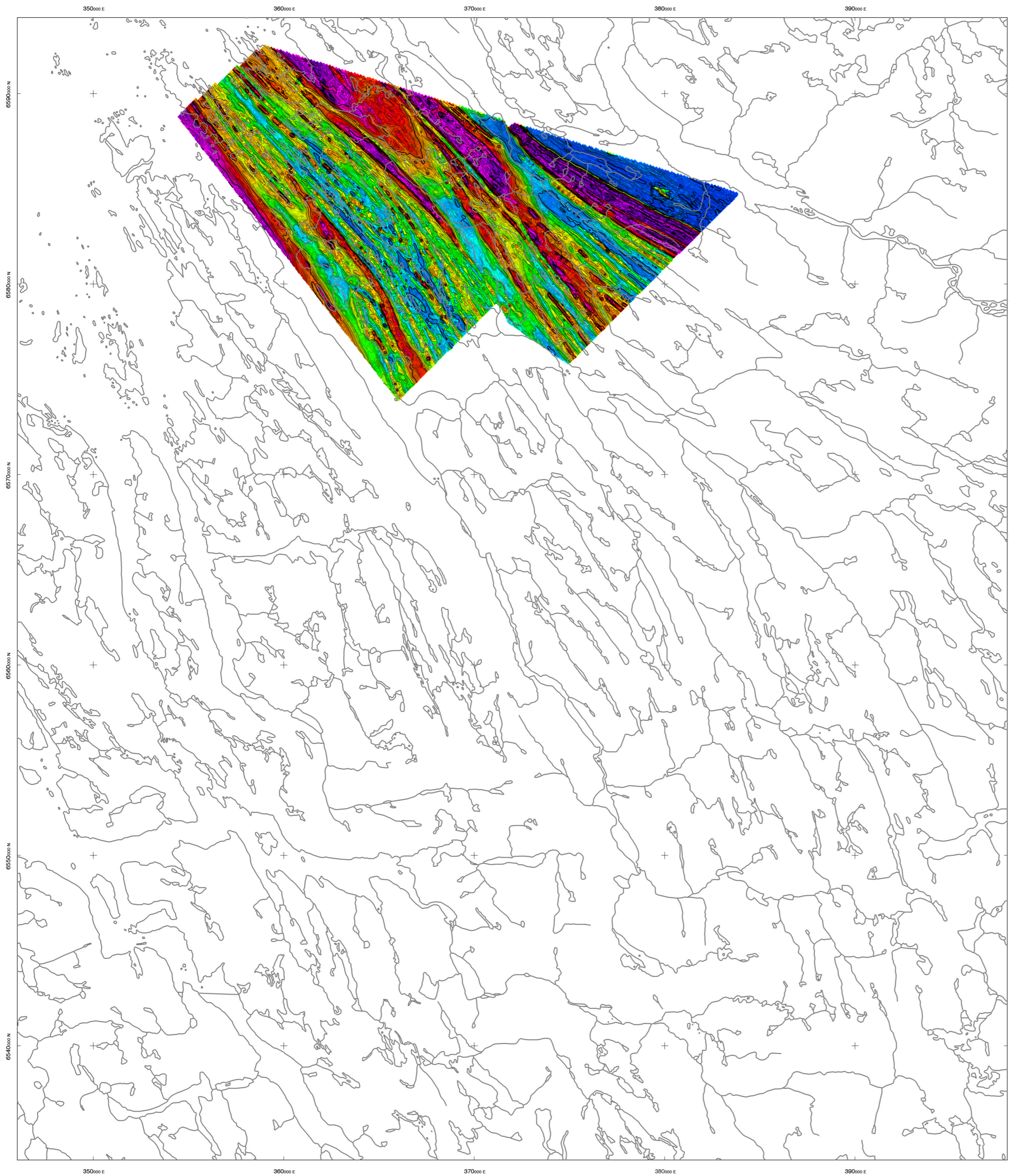
AREVA QUEBEC INC.
CAGE A AREA, QUEBEC

EXPOSURE RATE

FUGRO MAG/RAD SURVEY	NTS: 24P/5,6	GEOPHYSICIST:
DATE: JANUARY, 2008	JOB: 07059	SHEET: 1

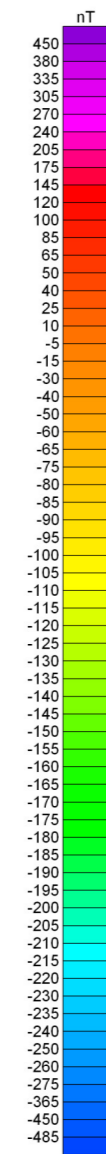
Fugro Airborne Surveys





TECHNICAL SUMMARY

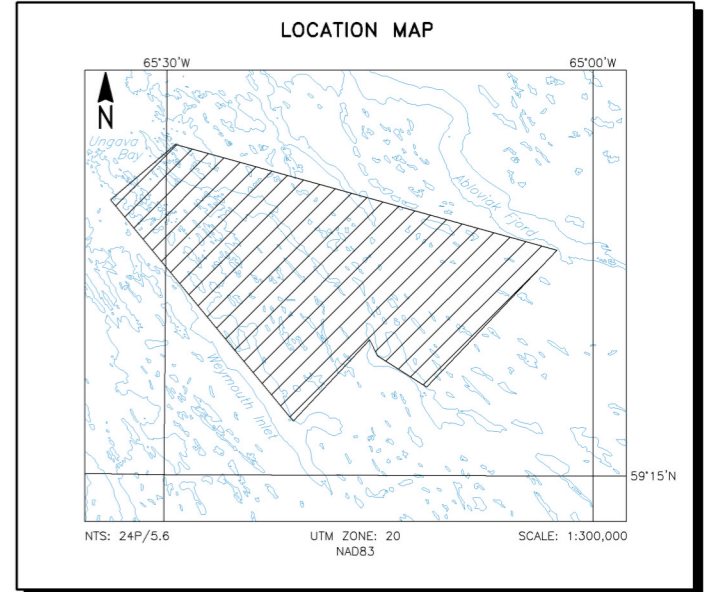
Navigation Differentially-corrected GPS
 Data reduction grid interval 30 metres
 Terrain clearance Helicopter, Spectrometer 50 m
 Magnetometer 50 m
 Data sampling interval 0.1 second
 Magnetometer / sensitivity Cesium / 0.01 nT
 Spectrometer GR820



RESIDUAL MAGNETIC FIELD CONTOURS



Magnetic inclination within the survey area: 78 degrees N
 Magnetic declination within the survey area: 27 degrees W

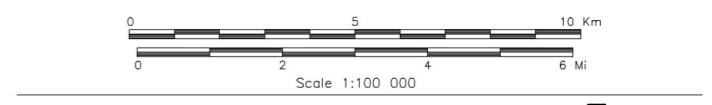


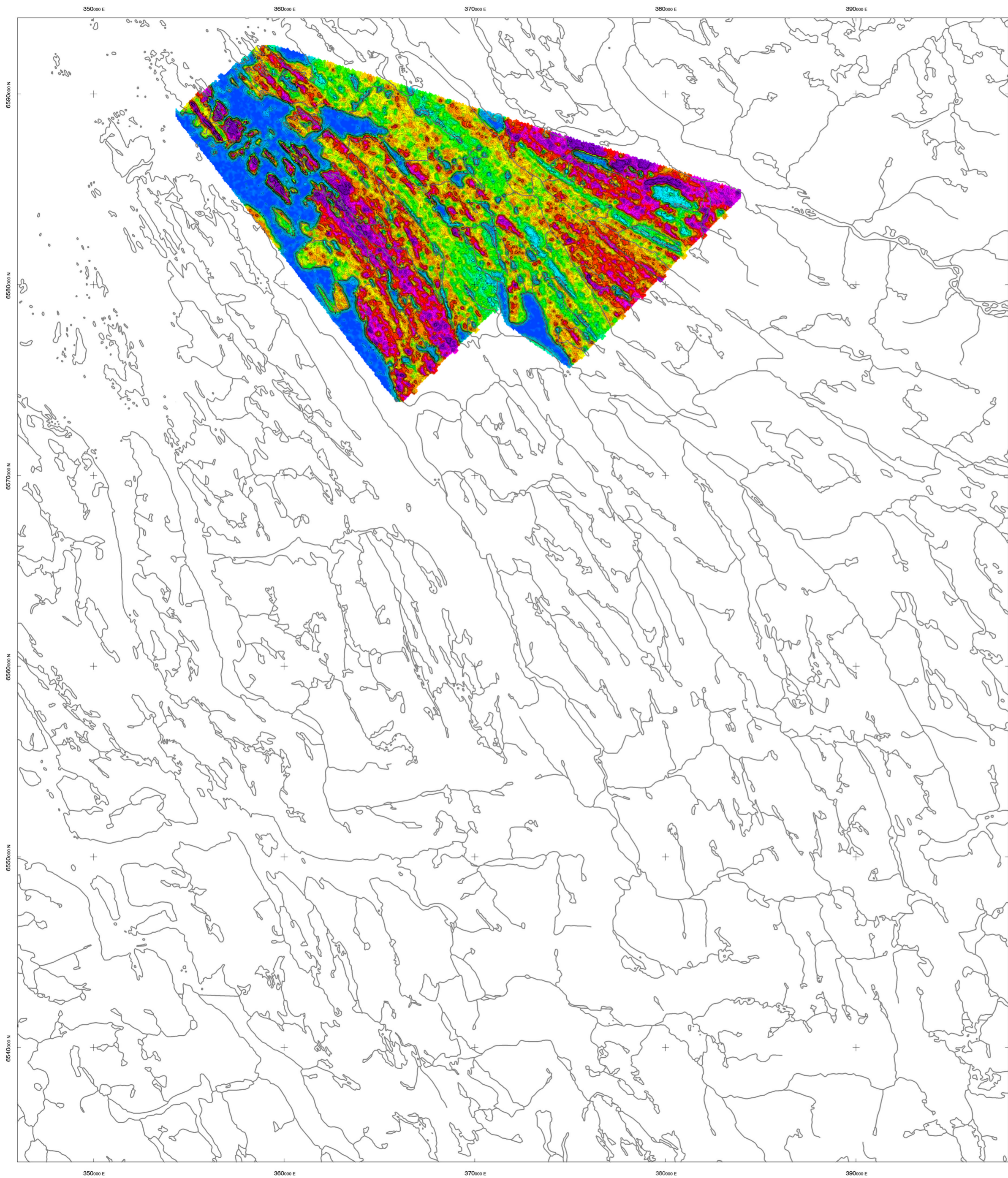
AREVA QUEBEC INC.
CAGE A AREA, QUEBEC

RESIDUAL MAGNETIC FIELD
 IGRF Removed

FUGRO MAG/RAD SURVEY	NTS: 24P/5.6	GEOPHYSICIST:
DATE: JANUARY, 2008	JOB: 07059	SHEET: 1

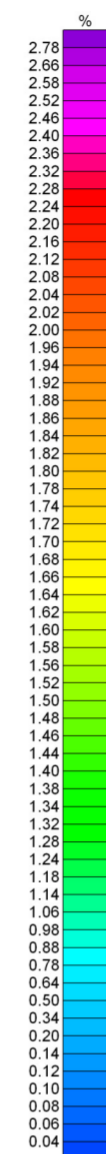
Fugro Airborne Surveys



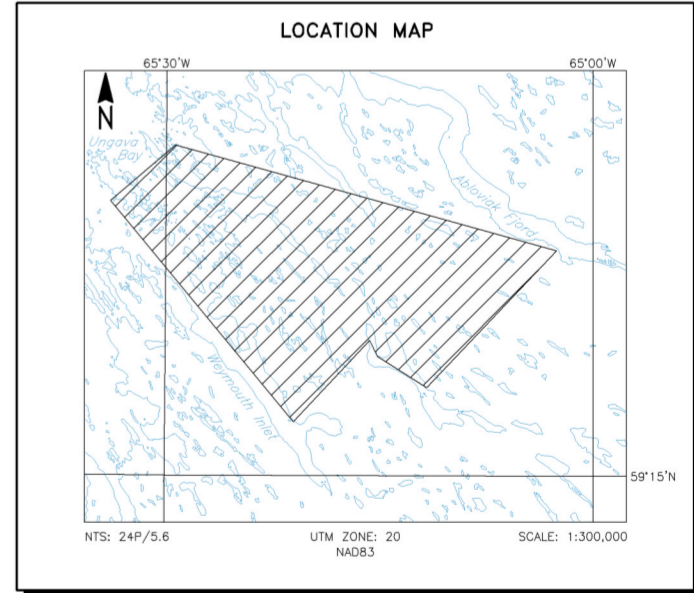
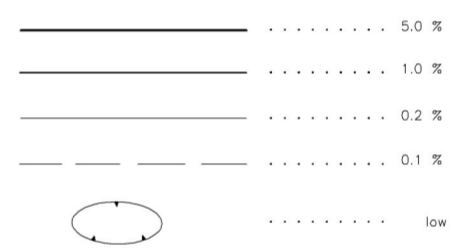


TECHNICAL SUMMARY

Navigation Differentially-corrected GPS
 Data reduction grid interval 38 metres
 Terrain clearance Helicopter, Spectrometer 50 m
 Data sampling interval Magnetometer 50 m
 Magnetometer / sensitivity Cesium / 0.01 nT
 Spectrometer GR820



CONTOUR INTERVALS

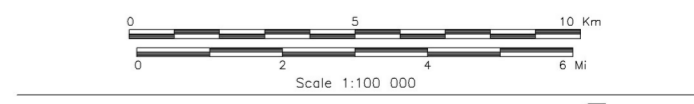


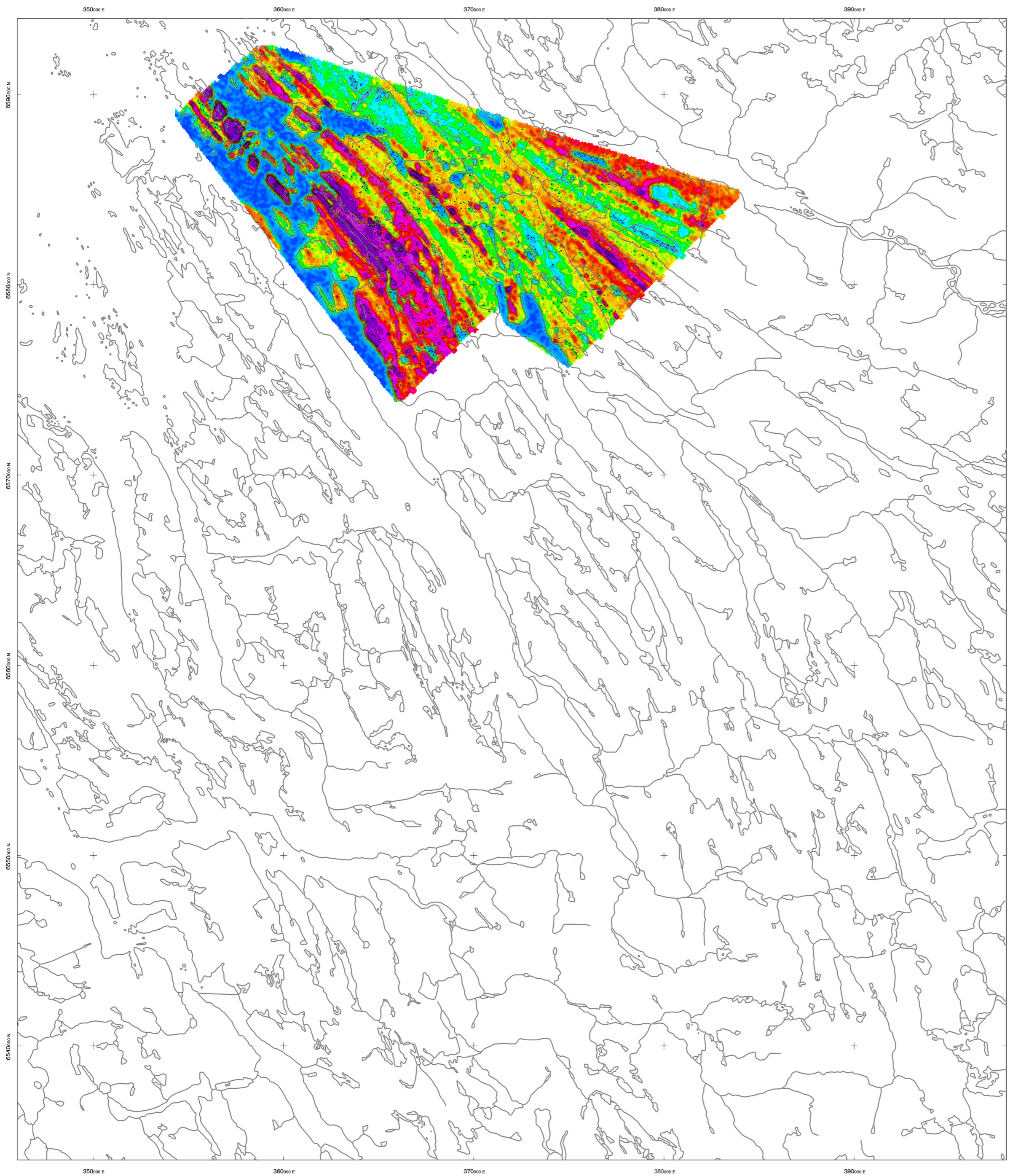
AREVA QUEBEC INC.
CAGE A AREA, QUEBEC

**RADIOMETRIC
 POTASSIUM CONCENTRATION**

FUGRO MAG/RAD SURVEY	NTS: 24P/5,6	GEOPHYSICIST:
DATE: JANUARY, 2008	JOB: 07059	SHEET: 1

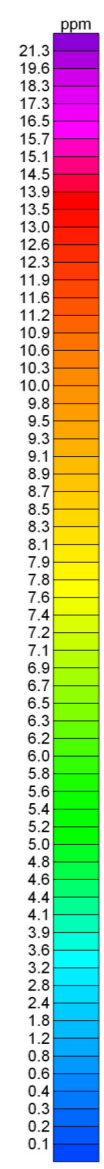
Fugro Airborne Surveys



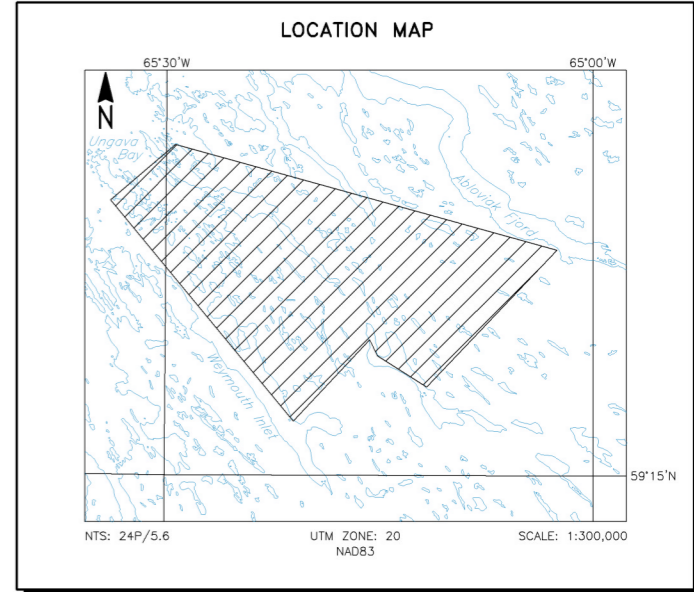
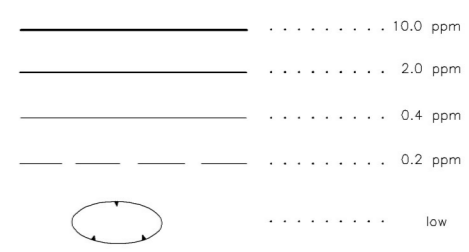


TECHNICAL SUMMARY

Navigation Differentially-corrected GPS
 Data reduction grid interval 38 metres
 Terrain clearance Helicopter, Spectrometer 50 m
 Data sampling interval Magnetometer 50 m
 Magnetometer / sensitivity 0.1 second
 Spectrometer Cesium / 0.01 nT
 GR820



CONTOUR INTERVALS

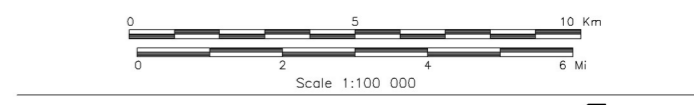


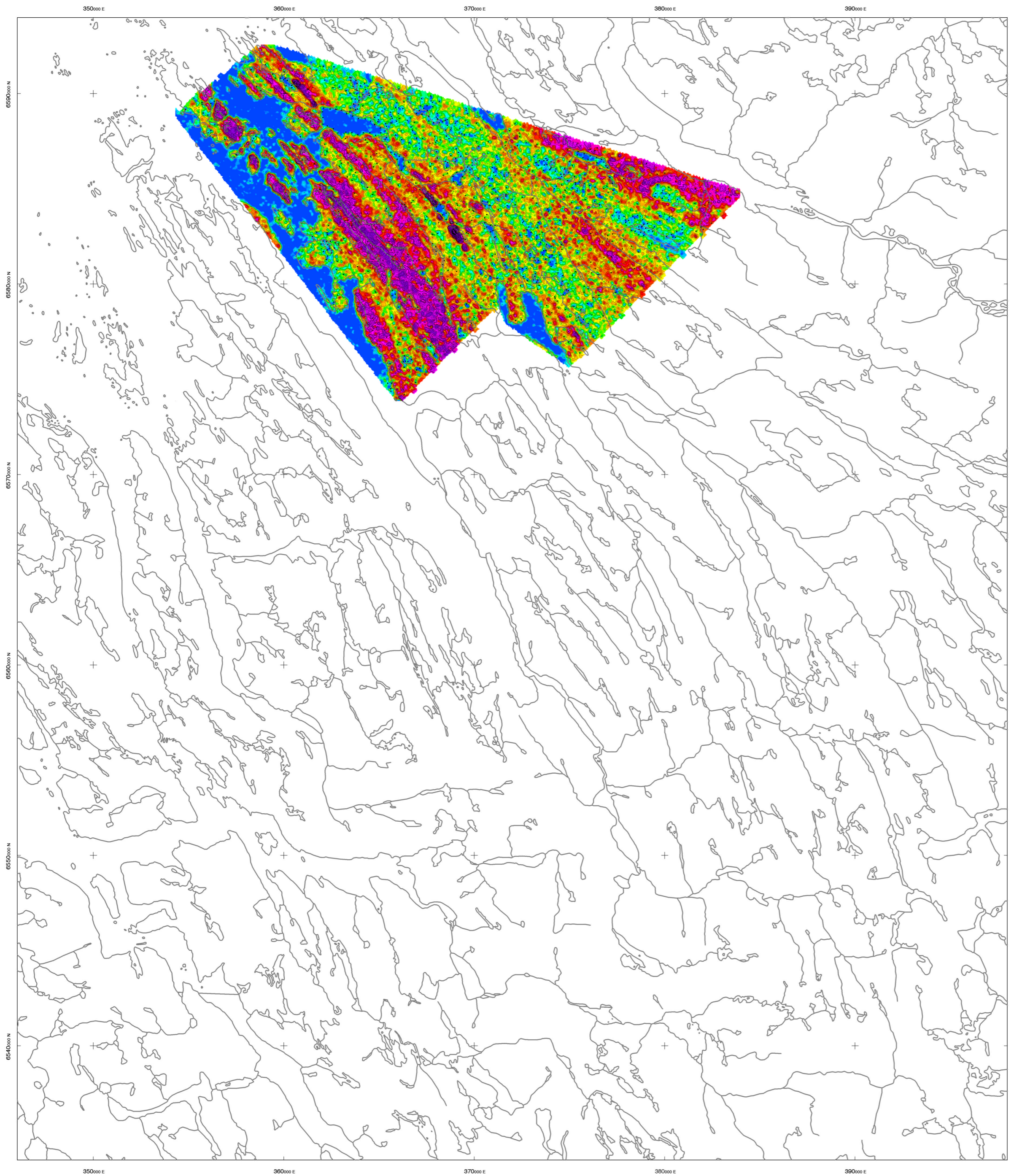
AREVA QUEBEC INC.
CAGE A AREA, QUEBEC

**RADIOMETRIC
 EQUIVALENT THORIUM CONCENTRATION**

FUGRO MAG/RAD SURVEY	NTS: 24P/5,6	GEOPHYSICIST:
DATE: JANUARY, 2008	JOB: 07059	SHEET: 1

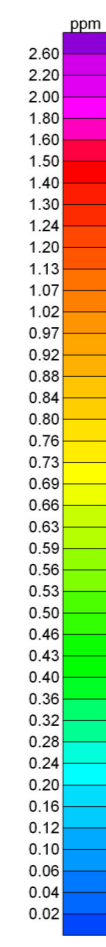
Fugro Airborne Surveys



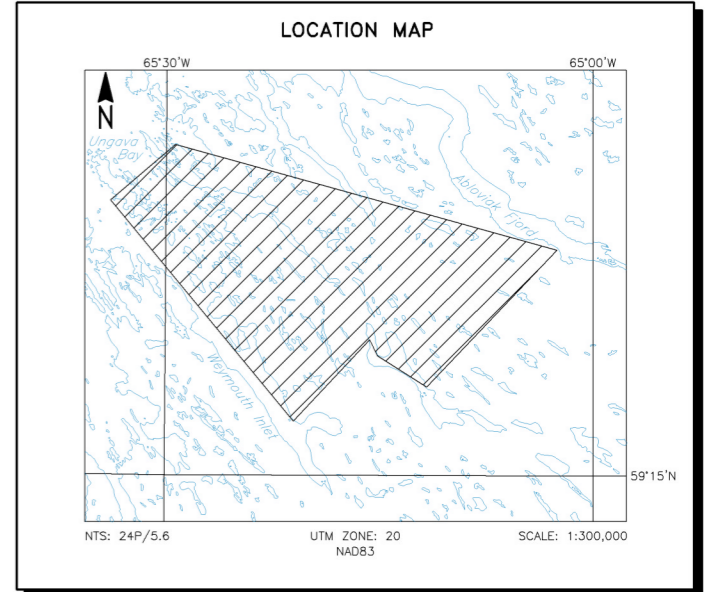
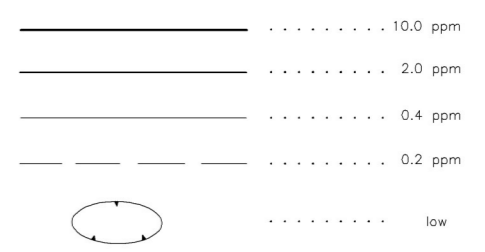


TECHNICAL SUMMARY

Navigation Differentially-corrected GPS
 Data reduction grid interval 38 metres
 Terrain clearance Helicopter, Spectrometer 50 m
 Data sampling interval Magnetometer 50 m
 Magnetometer / sensitivity 0.1 second
 Spectrometer Cesium / 0.01 nT
 GR820



CONTOUR INTERVALS

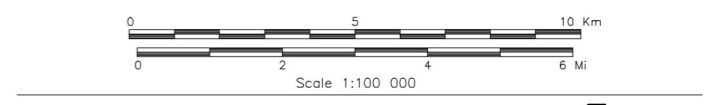


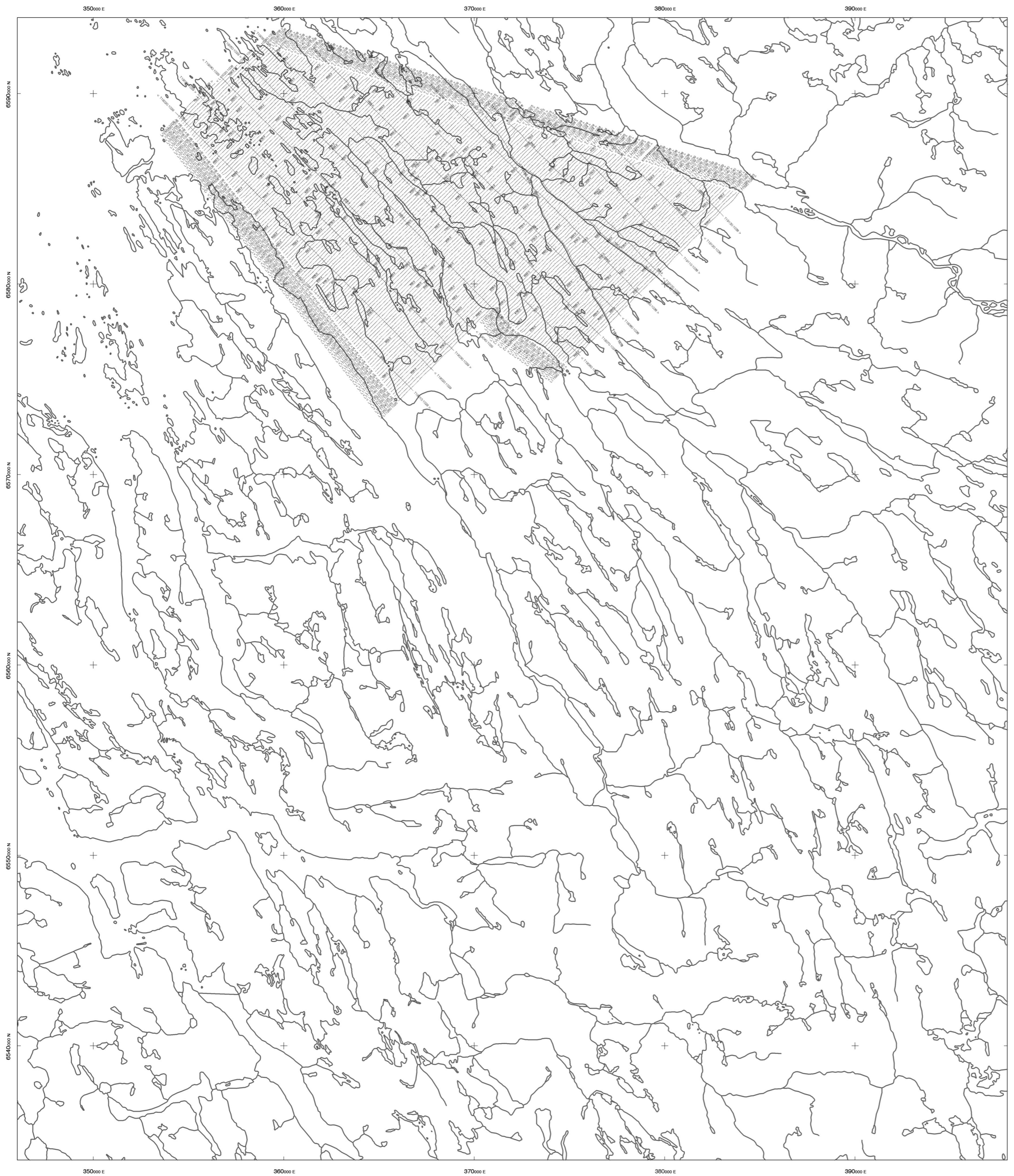
AREVA QUEBEC INC.
 CAGE A AREA, QUEBEC

**RADIOMETRIC
 EQUIVALENT URANIUM CONCENTRATION**

FUGRO MAG/RAD SURVEY	NTS: 24P/5,6	GEOPHYSICIST:
DATE: JANUARY, 2008	JOB: 07059	SHEET: 1

Fugro Airborne Surveys



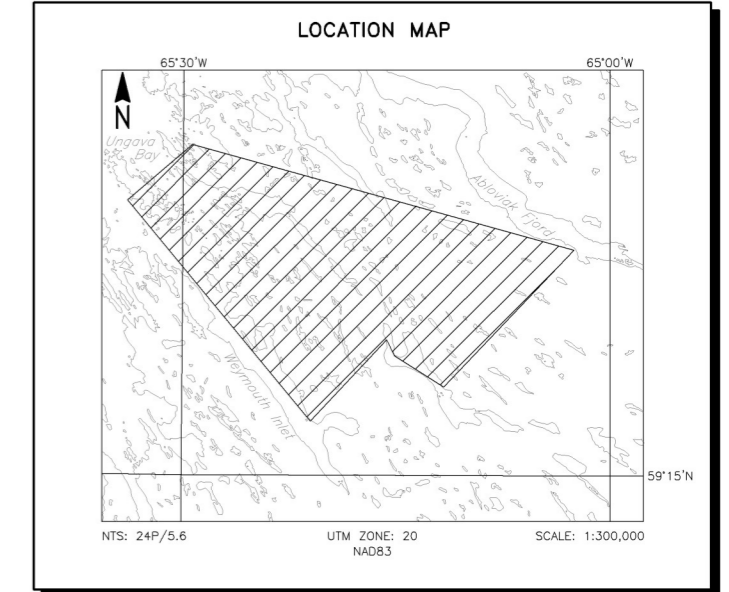
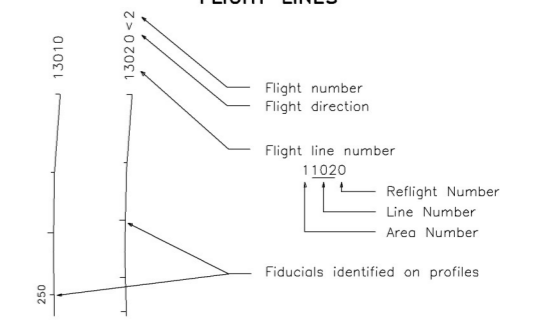


TECHNICAL SUMMARY

Navigation Differentially-corrected GPS
 Data reduction grid interval 30 metres
 Terrain clearance Helicopter, Spectrometer 50 m
 Magnetometer 50 m
 Data sampling interval 0.1 second
 Magnetometer / sensitivity Cesium / 0.01 nT
 Spectrometer GR820



FLIGHT LINES



AREVA QUEBEC INC.
CAGE A AREA, QUEBEC

FLIGHT LINES

FUGRO MAG/RAD SURVEY	NTS: 24P/5,6	GEOPHYSICIST:
DATE: JANUARY, 2008	JOB: 07059	SHEET: 1

Fugro Airborne Surveys

