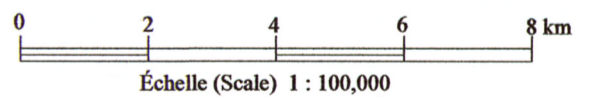


GM 64464

- Limites de la propriété (Property limits)
- 0047692 Numéro de cellule (CDC)  
(Claim number (MDC))



**DIOS EXPLORATION INC.**

**687** | Projet (Project): UPINOR

**Carte (Map) 1: Carte de la propriété (Claim map)**

SNRC (NTS): 33B13, 33B14  
33G03, 33G04  
UTM, Zone18, Nad27

Terrain: J. Lalancette,  
(Field work) Ing. jr.  
Dessin (Drawing): Sanmei Gao

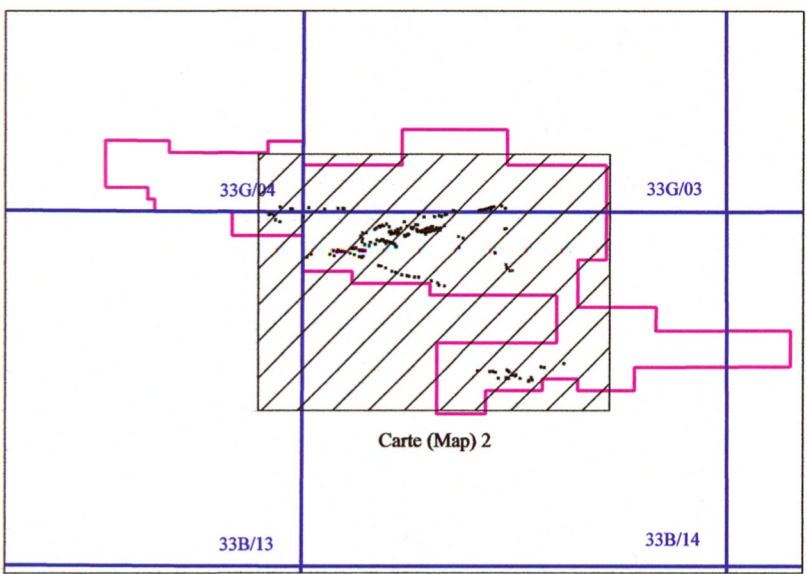
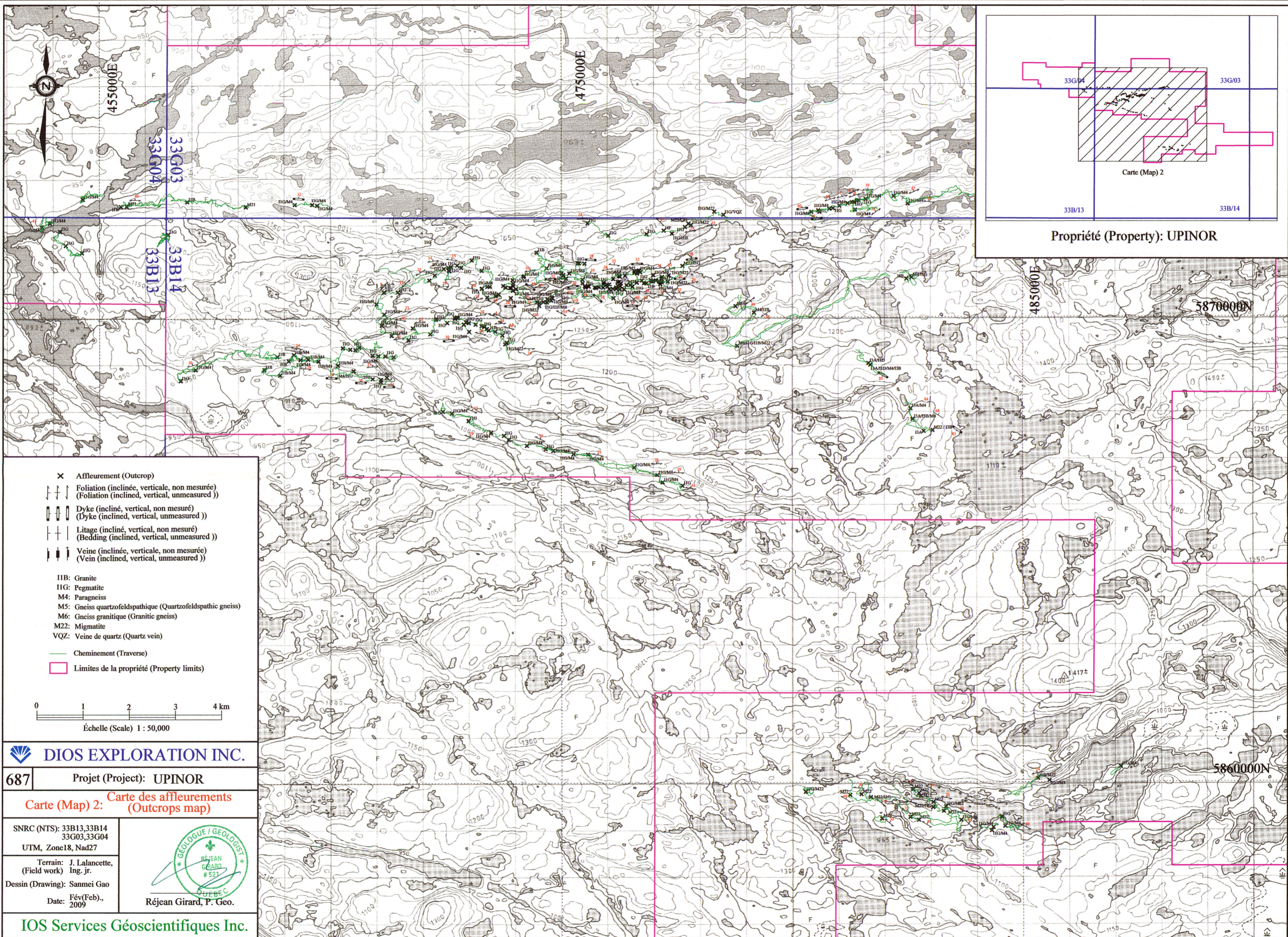
Date: Jan., 2009



Réjean Girard, P. Geo.

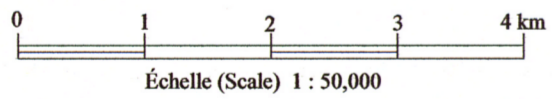
**IOS Services Géoscientifiques Inc.**

REÇU AU MRNF  
 27 AVR. 2009  
 804 658  
 DIRECTION DES TITRES MINERS



Propriété (Property): UPINOR

- × Affleurement (Outcrop)
- ↗ ↘ Foliation (incliné, verticale, non mesurée)  
(Foliation (inclined, vertical, unmeasured))
- ▬ Dyke (incliné, vertical, non mesuré)  
(Dyke (inclined, vertical, unmeasured))
- ▬ Litage (incliné, vertical, non mesuré)  
(Bedding (inclined, vertical, unmeasured))
- ▬ Veine (inclinée, verticale, non mesurée)  
(Vein (inclined, vertical, unmeasured))
  
- I1B: Granite
- I1G: Pegmatite
- M4: Paragneiss
- M5: Gneiss quartzofeldspathique (Quartzofeldspathic gneiss)
- M6: Gneiss granitique (Granitic gneiss)
- M22: Migmatite
- VQZ: Veine de quartz (Quartz vein)
  
- Cheminement (Traverse)
- ▭ Limites de la propriété (Property limits)



**DIOS EXPLORATION INC.**

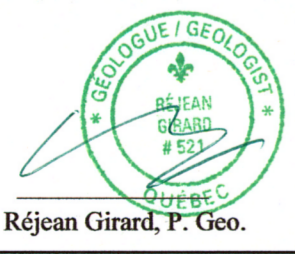
687 Projet (Project): UPINOR

Carte (Map) 2: Carte des affleurements (Outcrops map)

SNRC (NTS): 33B13, 33B14  
33G03, 33G04  
UTM, Zone 18, Nad 27

Terrain: J. Lalancette, Ing. jr.  
Dessin (Drawing): Sanmei Gao

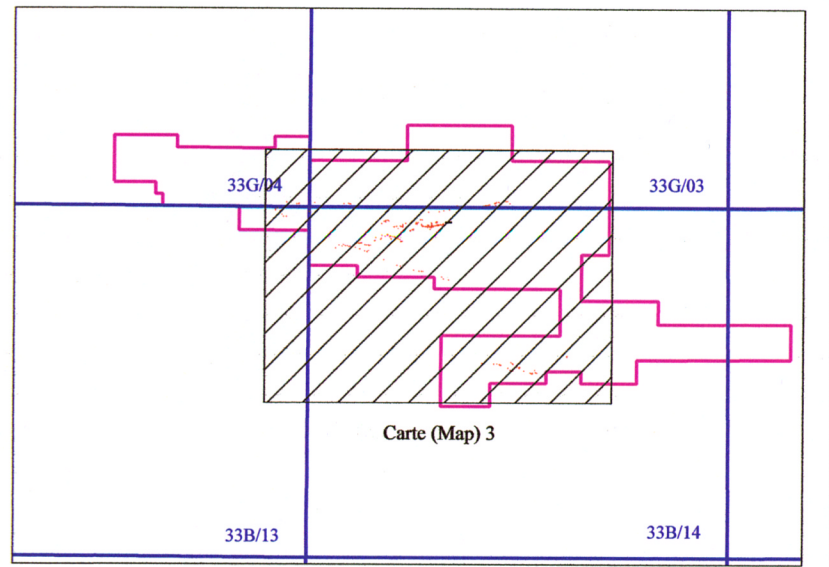
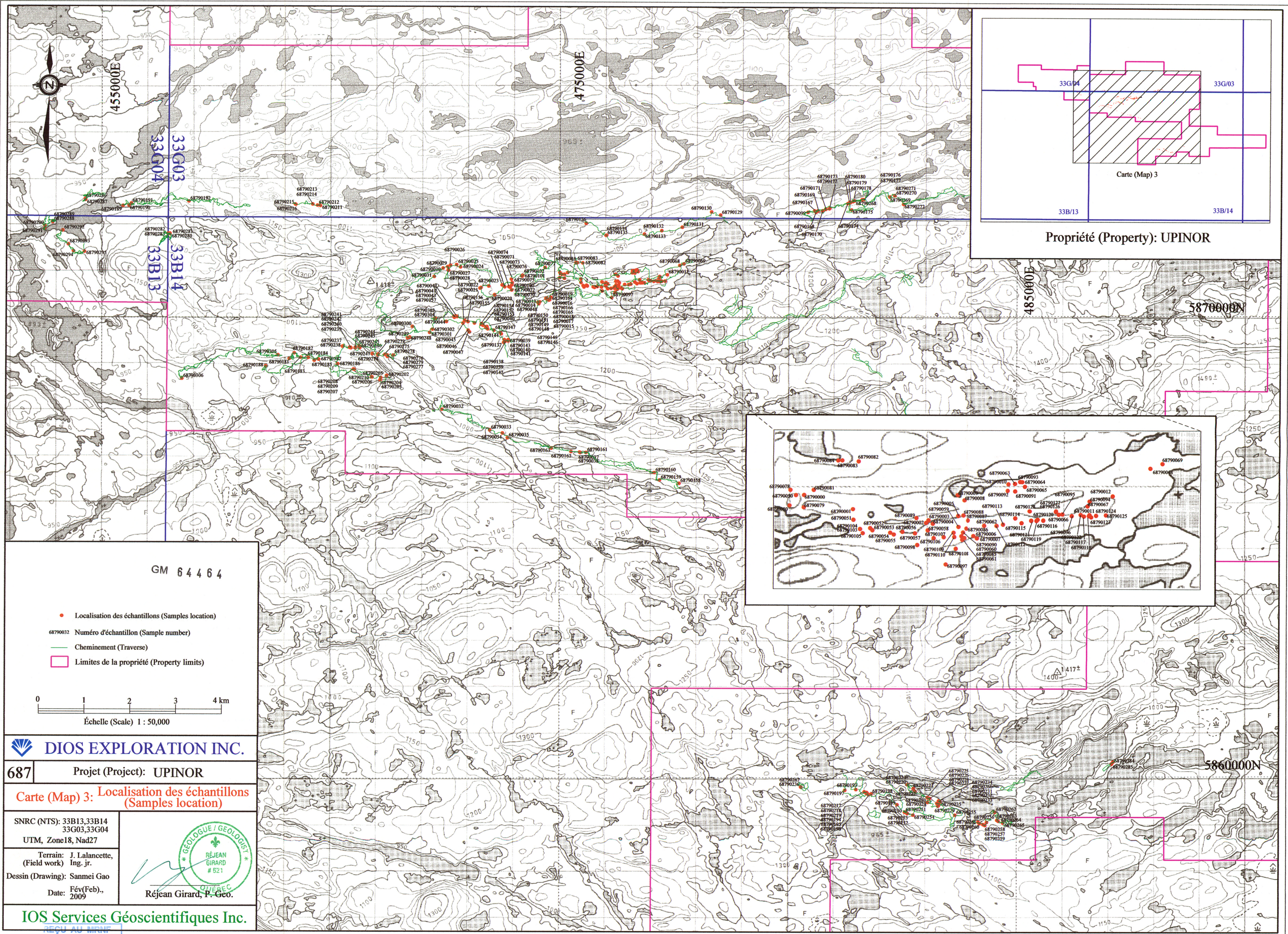
Date: Fév (Feb), 2009



**IOS Services Géoscientifiques Inc.**

REÇU AU MRNF  
27 AVR. 2009  
804653  
DIRECTION DES TITRES MINIERES

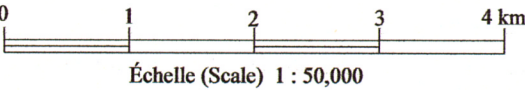
GM 64464



Propriété (Property): UPINOR

GM 64464

- Localisation des échantillons (Samples location)
- 68790032 Numéro d'échantillon (Sample number)
- Cheminement (Traverse)
- Limites de la propriété (Property limits)



**DIOS EXPLORATION INC.**

687 Projet (Project): UPINOR

Carte (Map) 3: Localisation des échantillons (Samples location)

SNRC (NTS): 33B13,33B14  
33G03,33G04

UTM, Zone18, Nad27

Terrain: J. Lalancette,  
(Field work) Ing. jr.

Dessin (Drawing): Sanmei Gao

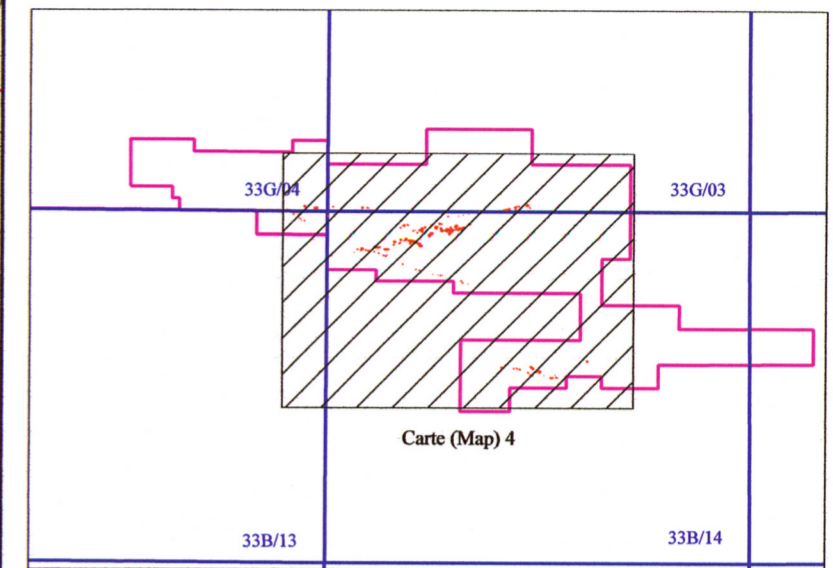
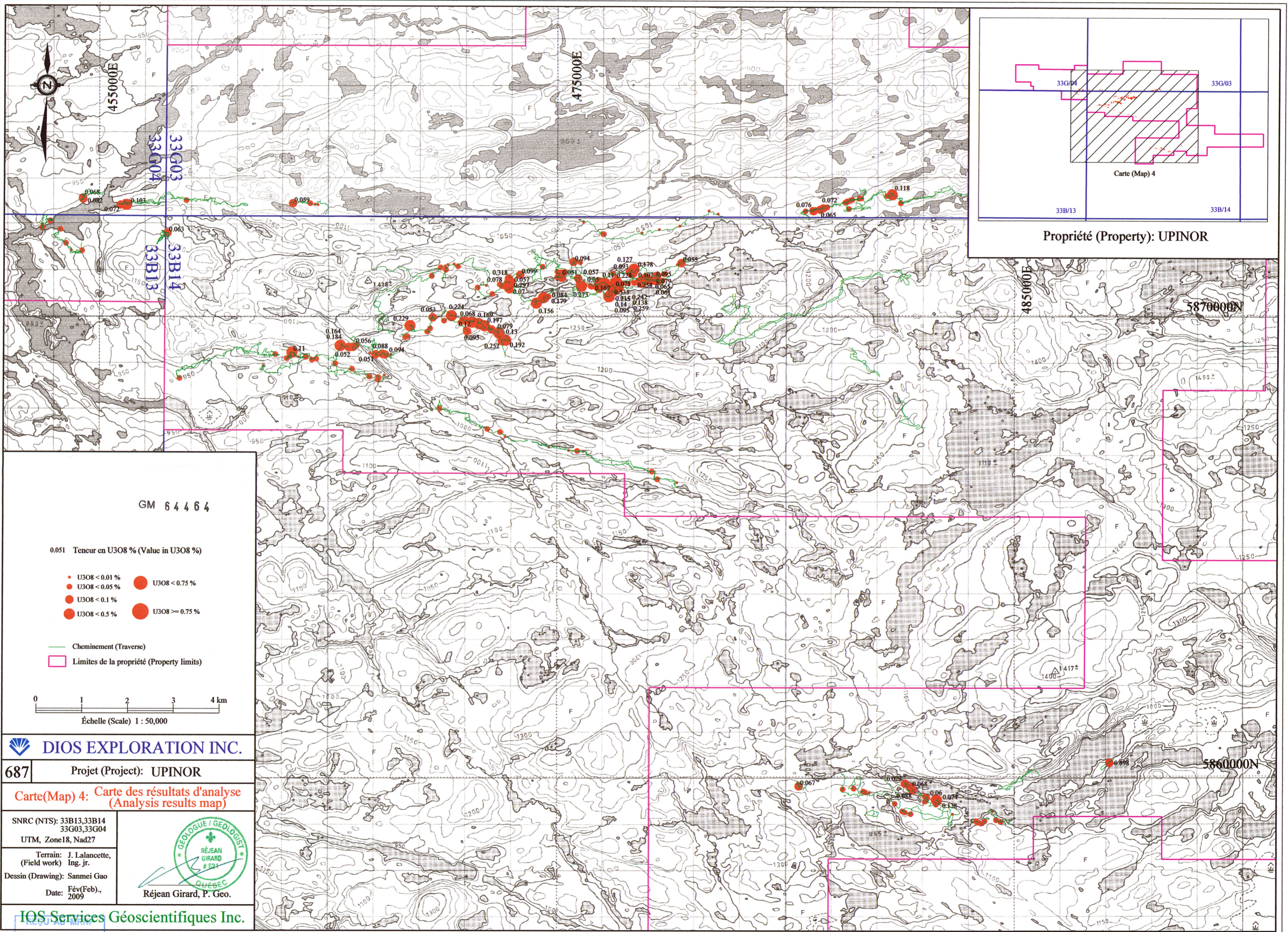
Date: Fév(Feb),  
2009



**IOS Services Géoscientifiques Inc.**

REÇU AU MINRE

27 MAR 2009  
804653  
SECTION DES TITRES MINIERES



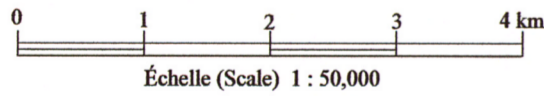
Propriété (Property): UPINOR

GM 64464

0.051 Teneur en U3O8 % (Value in U3O8 %)

- U3O8 < 0.01 %
- U3O8 < 0.05 %
- U3O8 < 0.1 %
- U3O8 < 0.5 %
- U3O8 < 0.75 %
- U3O8 ≥ 0.75 %

- Cheminement (Traverse)
- Limites de la propriété (Property limits)



**DIOS EXPLORATION INC.**

687 Projet (Project): UPINOR

**Carte(Map) 4: Carte des résultats d'analyse (Analysis results map)**

SNRC (NTS): 33B13,33B14  
33G03,33G04  
UTM, Zone18, Nad27

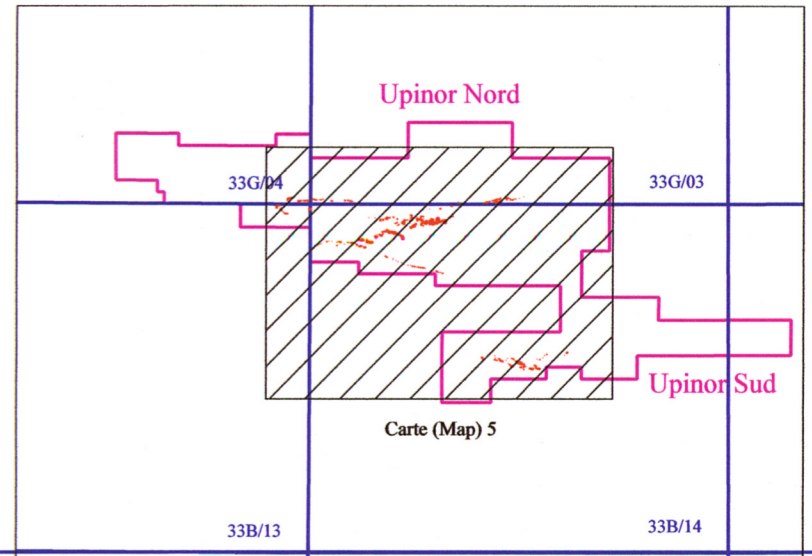
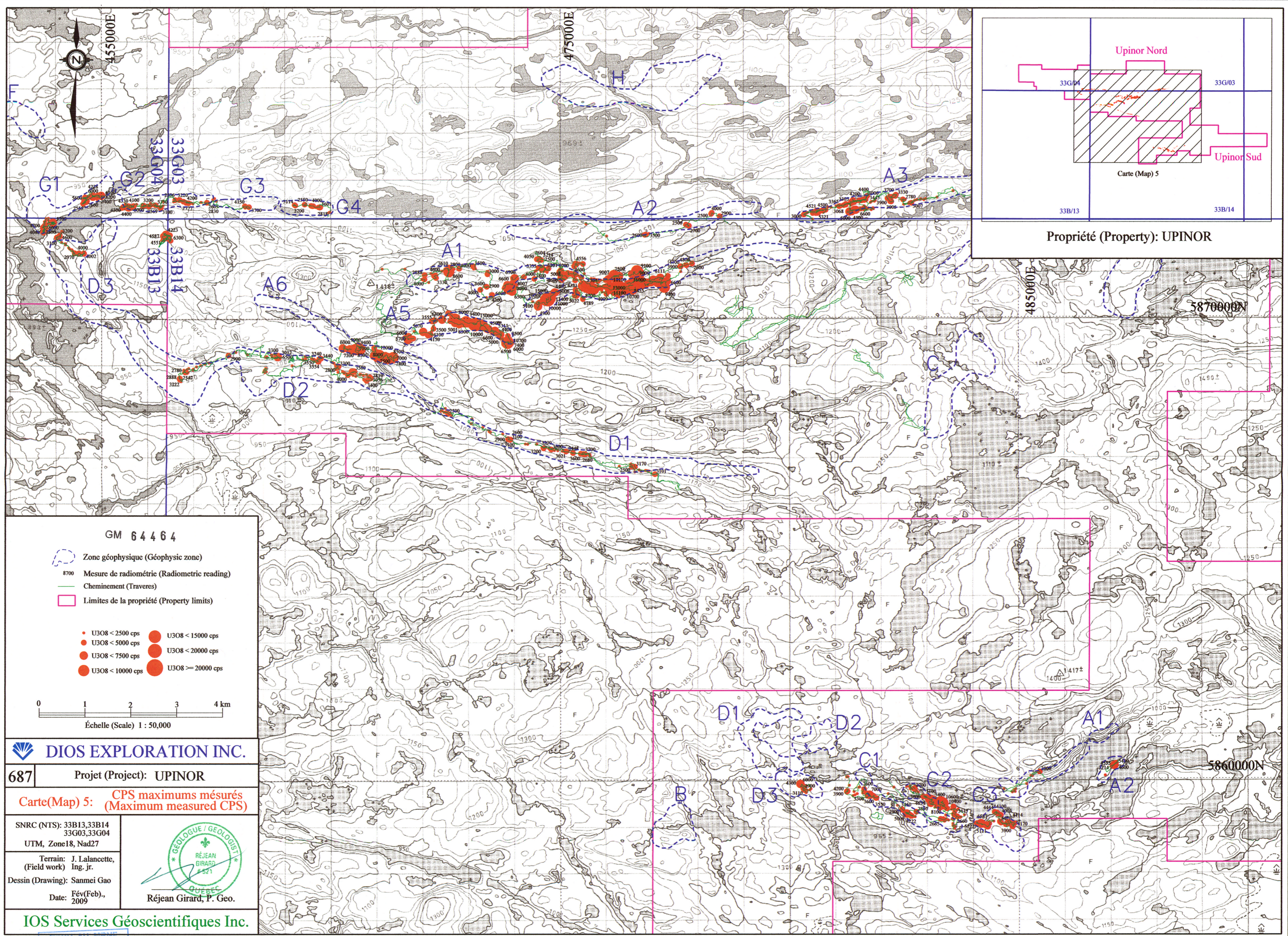
Terrain: J. Lalancette, Ing. jr.  
(Field work)  
Dessin (Drawing): Sanmei Gao  
Date: Fév(Feb), 2009



Réjean Girard, P. Geo.

**IOS Services Géoscientifiques Inc.**

27 AVR. 2009  
8046SB  
DIRECTION DES TITRES MINIERES

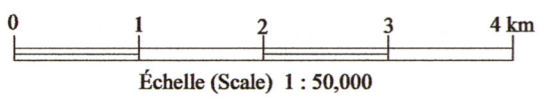


Propriété (Property): UPINOR

GM 64464

- Zone géophysique (Geophysical zone)
- 8700 Mesure de radiométrie (Radiometric reading)
- Cheminement (Traverses)
- Limites de la propriété (Property limits)

- U3O8 < 2500 cps
- U3O8 < 5000 cps
- U3O8 < 7500 cps
- U3O8 < 10000 cps
- U3O8 < 15000 cps
- U3O8 < 20000 cps
- U3O8 >= 20000 cps



DIOS EXPLORATION INC.

687 Projet (Project): UPINOR

Carte(Map) 5: CPS maximums mesurés (Maximum measured CPS)

SNRC (NTS): 33B13, 33B14  
33G03, 33G04  
UTM, Zone 18, Nad 27

Terrain: J. Lalancette,  
(Field work) Ing. jr.  
Dessin (Drawing): Sanmei Gao  
Date: Fév(Feb), 2009



Réjean Girard, P. Geo.

IOS Services Géoscientifiques Inc.

RECU AU MINRE  
27 AVR. 2009  
804658  
DIRECTION DES TITRES MINIERES