

482500 mE 485000 mE 487500 mE 490000 mE 492500 mE 495000 mE

5930000 mN

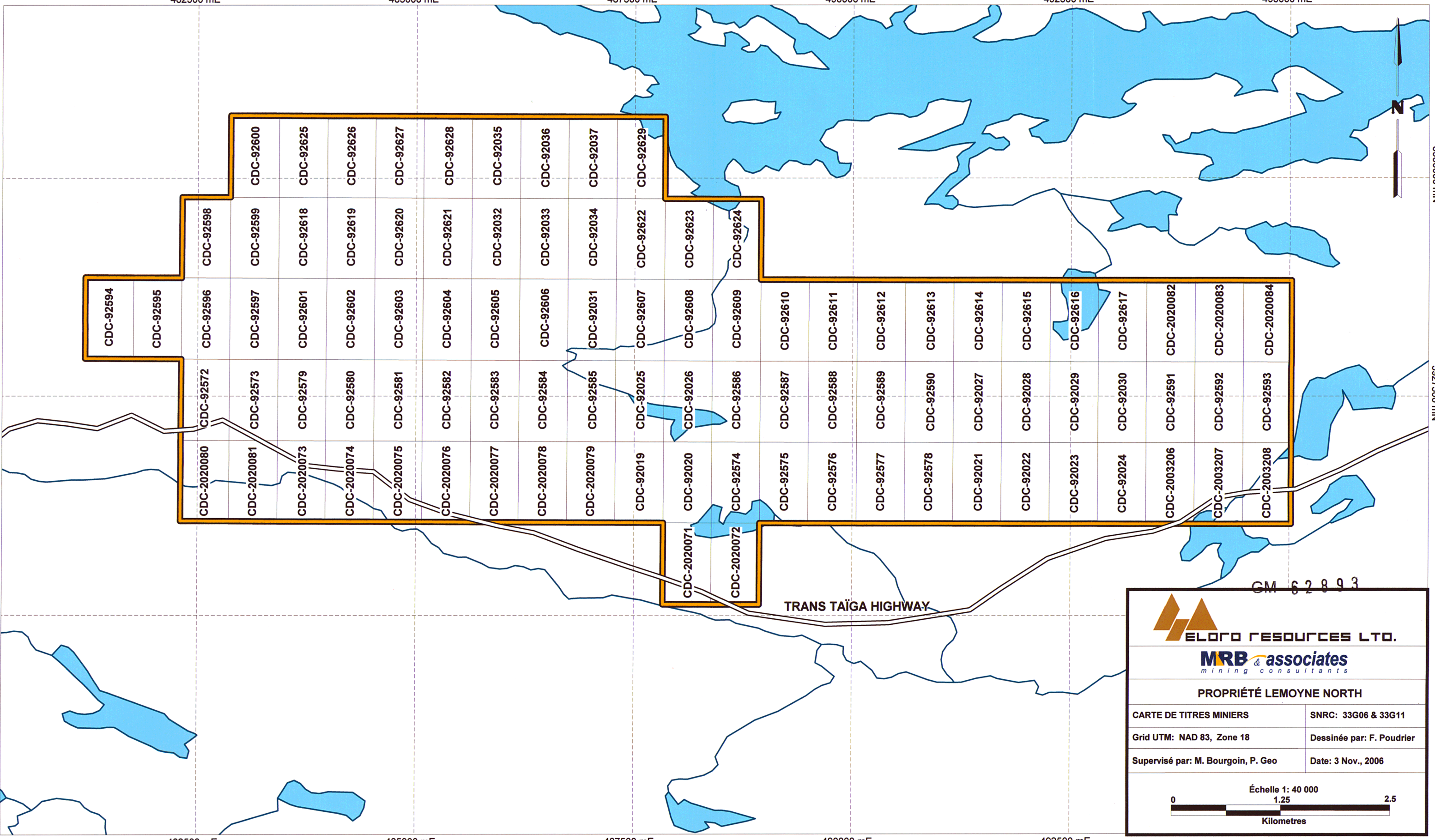
NW 0000069

5927500 mN


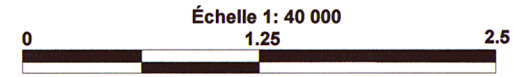
NW 0001266

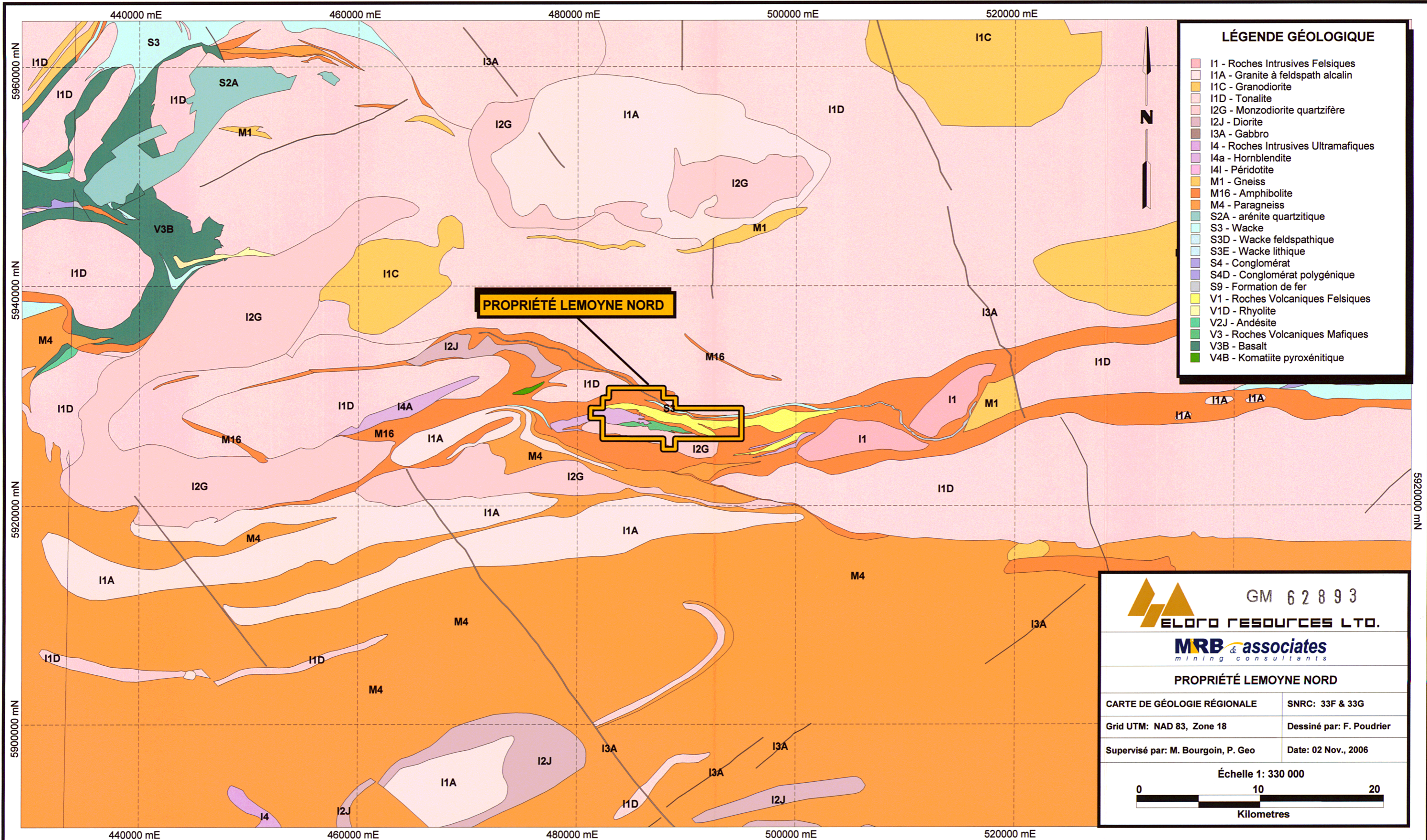
5925000 mN

482500 mE 485000 mE 487500 mE 490000 mE 492500 mE




GM 62893

	
PROPRIÉTÉ LEMOYNE NORTH	
CARTE DE TITRES MINIERS	SNRC: 33G06 & 33G11
Grid UTM: NAD 83, Zone 18	Dessinée par: F. Poudrier
Supervisé par: M. Bourgoin, P. Geo	Date: 3 Nov., 2006
Échelle 1: 40 000 	



- ### LÉGENDE GÉOLOGIQUE
- I1 - Roches Intrusives Felsiques
 - I1A - Granite à feldspath alcalin
 - I1C - Granodiorite
 - I1D - Tonalite
 - I2G - Monzodiorite quartzifère
 - I2J - Diorite
 - I3A - Gabbro
 - I4 - Roches Intrusives Ultramafiques
 - I4a - Hornblendite
 - I4l - Péridotite
 - M1 - Gneiss
 - M16 - Amphibolite
 - M4 - Paragneiss
 - S2A - arénite quartzitique
 - S3 - Wacke
 - S3D - Wacke feldspathique
 - S3E - Wacke lithique
 - S4 - Conglomérat
 - S4D - Conglomérat polygénique
 - S9 - Formation de fer
 - V1 - Roches Volcaniques Felsiques
 - V1D - Rhyolite
 - V2J - Andésite
 - V3 - Roches Volcaniques Mafiques
 - V3B - Basalt
 - V4B - Komatiite pyroxénitique

PROPRIÉTÉ LEMOYNE NORD



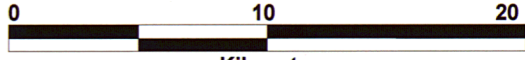
GM 62893
ELDORADO RESOURCES LTD.

MRB & associates
 mining consultants

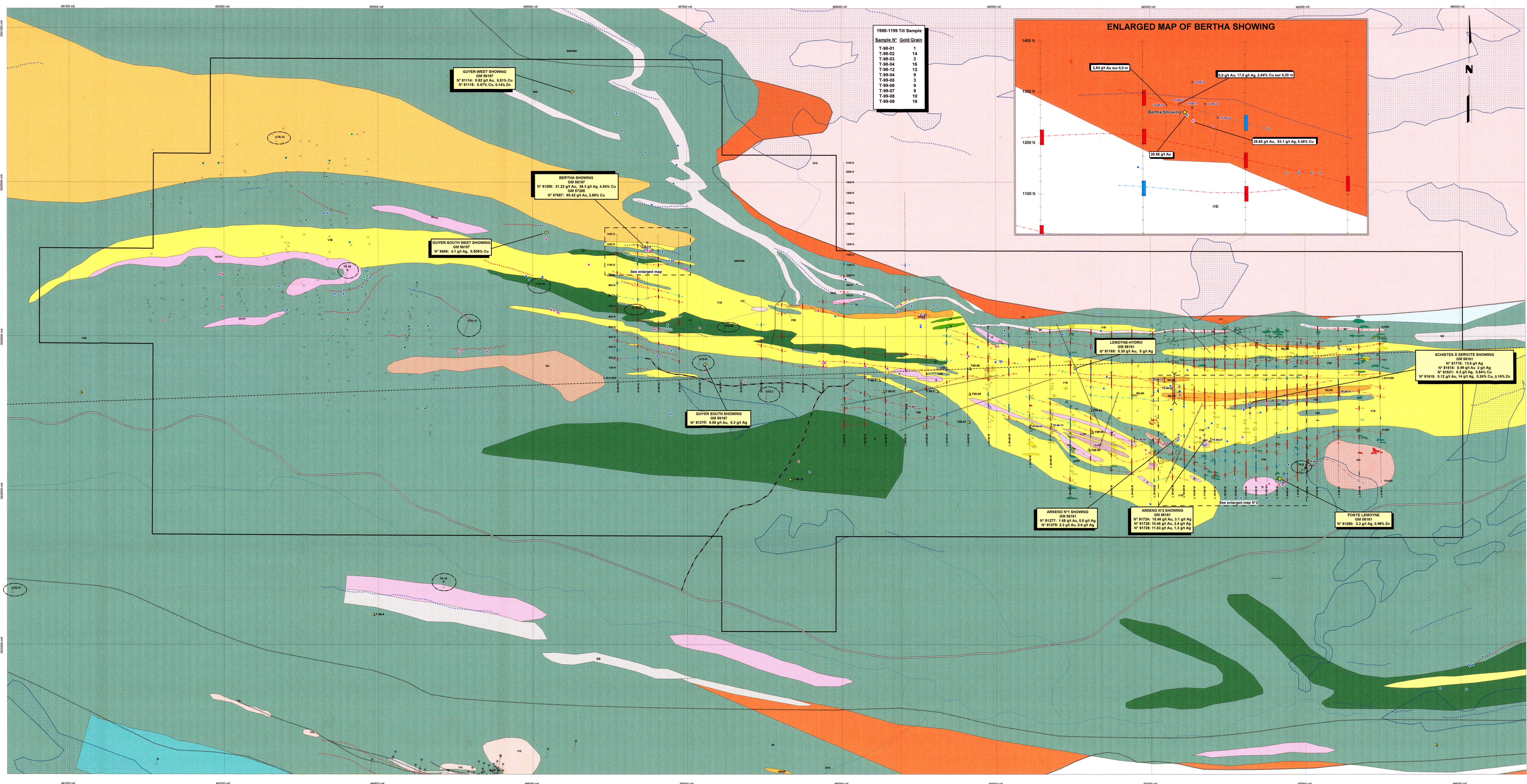
PROPRIÉTÉ LEMOYNE NORD

CARTE DE GÉOLOGIE RÉGIONALE	SNRC: 33F & 33G
Grid UTM: NAD 83, Zone 18	Dessiné par: F. Poudrier
Supervisé par: M. Bourgoin, P. Geo	Date: 02 Nov., 2006

Échelle 1: 330 000

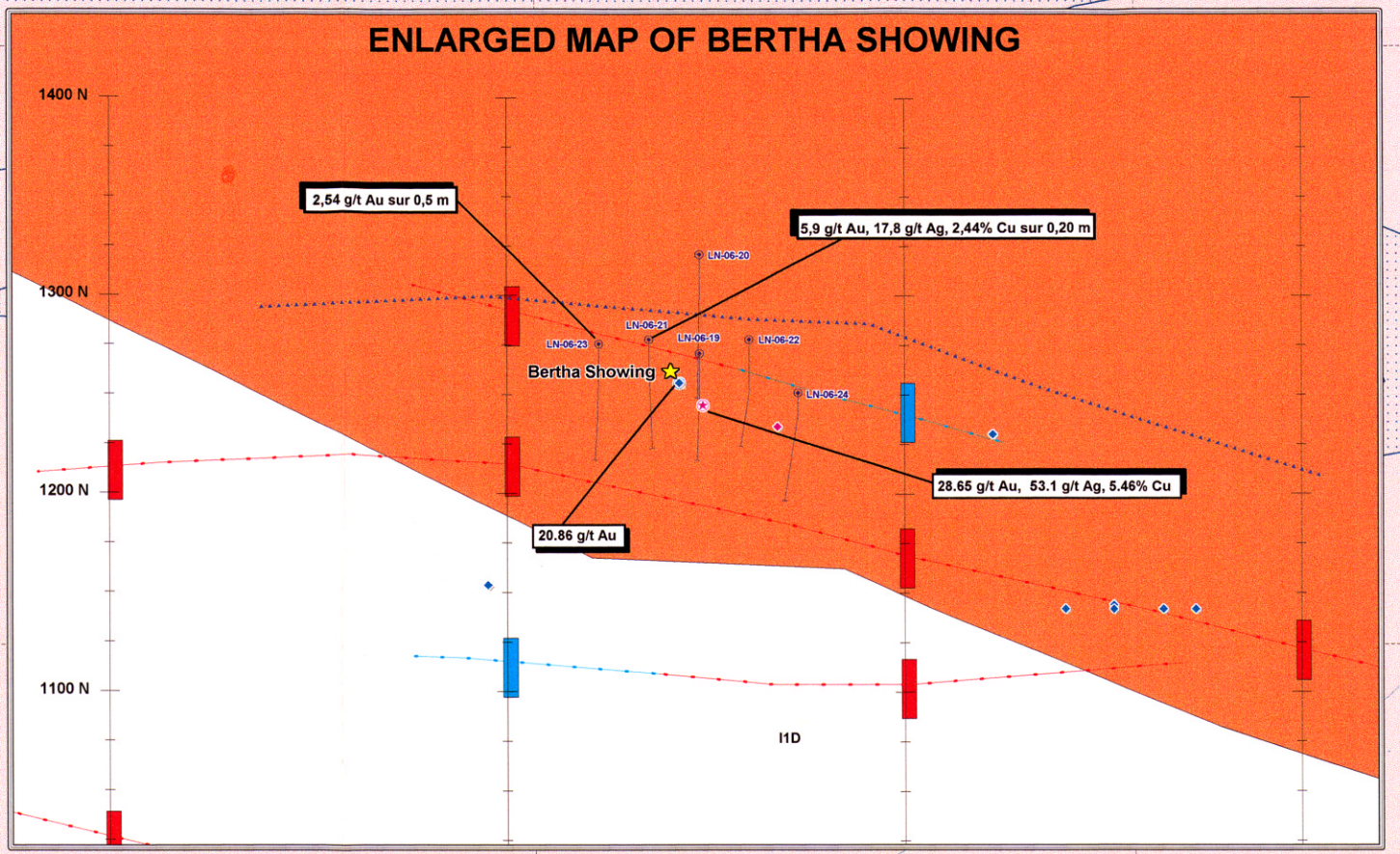


Kilometres



1998-1999 Till Sample

Sample N°	Gold Grain
T-98-01	1
T-98-02	14
T-98-03	3
T-98-04	16
T-98-12	12
T-99-04	9
T-99-05	3
T-99-06	9
T-99-07	9
T-99-08	10
T-99-09	16



- GEOLOGICAL LEGEND**
- [Green] V4447 Ultramafic Volcanic Rocks & Intrusive Volcanic Rocks?
 - [Light Green] I-1 - Felsic Intrusive Rocks
 - [Light Blue] IC - Granodiorite
 - [Light Purple] IIC - Tonalite
 - [Light Yellow] IG - Pegmatite
 - [Light Orange] IIP - Charnofite
 - [Light Red] ID - Syenite
 - [Light Green] I3 - Meta-Intrusive Rocks
 - [Light Blue] IA - Gabbro
 - [Light Purple] IA4 - Gabbro-Ultramafic Volcanic Rocks
 - [Light Orange] IB - Diabase
 - [Light Red] IBT - Chabazite?
 - [Light Green] I4 - Ultramafic Intrusive Rocks
 - [Light Blue] I4-4 - Ultramafic Intrusive Rocks - Ultramafic Volcanic Rocks
 - [Light Purple] I4D-SB-S3 - Gneiss-Iron Formation - Greywacke
 - [Light Orange] MSSE - Schist
 - [Light Red] SSM - Sediments & Pargness
 - [Light Green] S2 - Greywacke
 - [Light Blue] S8 - Iron Formation
 - [Light Purple] S8-S3 - Iron Formation-Greywacke
 - [Light Orange] S8S10 - Iron Formation-Chert
 - [Light Red] S8S10S6 - Banded Iron Formation & Wacke
 - [Light Green] S8S10S11 - Chert/Clotted Iron Formation
 - [Light Blue] V1-V2 - Felsic Volcanic Rocks-Intermediate Volcanic Rocks
 - [Light Purple] V1B - Rhyolite
 - [Light Orange] V2B - Basalt
 - [Light Red] V4 - Ultramafic Volcanic Rocks
 - [Light Green] V4-4-V3B - Ultramafic Volcanic Rocks-Ultramafic Intrusive Rocks-Basalt
- Other Symbols:**
- Outcrop
 - × Outcrop
 - ◆ 1998 Grab Sample < 1 g/t Au
 - ◆ 1998 Grab Sample > 1 g/t Au
 - ◆ 2005 Grab Sample < 1 g/t Au
 - ◆ 2005 Grab Sample > 1 g/t Au
 - ◆ 2006 Grab Sample < 1 g/t Au
 - ◆ 2006 Grab Sample > 1 g/t Au
 - ▲ 1998 & 1999 Till Sample
 - ★ Historical Mineralized Showing
- GEOPHYSICAL LEGEND**
- [Blue line] Weak IP Conductor
 - [Red line] Strong IP Conductor
 - [Blue dashed line] Weak axes IP Conductor
 - [Red dashed line] Strong axes IP Conductor
 - [Blue dotted line] Weak axes EM Conductor
 - [Red dotted line] Strong axes EM Conductor
 - [Black line] Trench
 - [Black line] Fault
 - [Circle with dot] 1976 Diamond Drill Hole
 - [Circle with dot] 2006 Diamond Drill Hole
- INFRASTRUCTURE**
- [Grey line] Main Road
 - [Black line] Bush Road
 - [Dashed line] Electrical Power Line

GM 62893

REÇU AU MRNF
20 FEV 2007
Division de Développement Rural

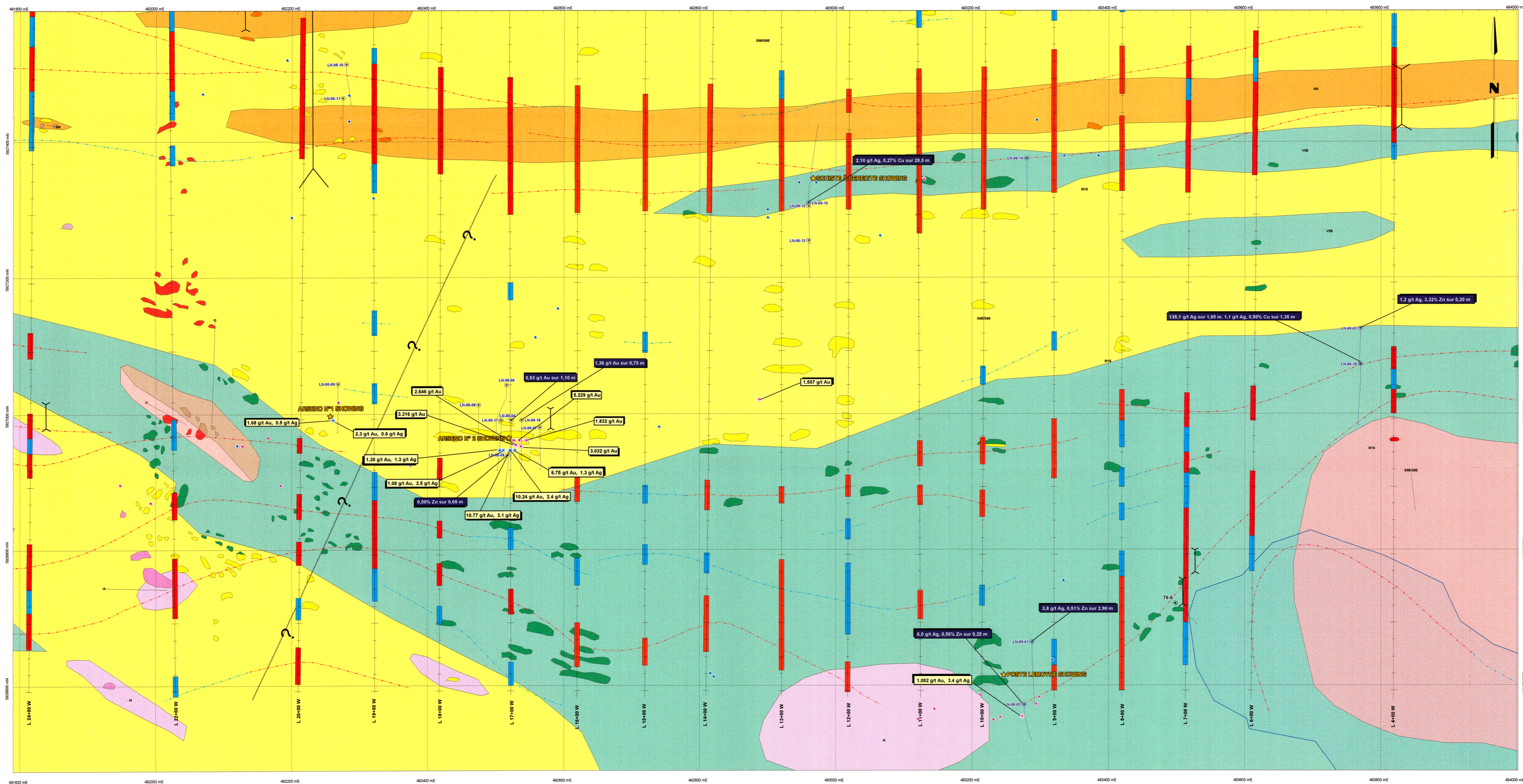
CAMBIOR **ELDORADO RESOURCES LTD.**

MRB associates

**Compilation Map
Lemoyne North Property**

NTS: 33006 & 33011 Map N° 1
Grid UTM: NAD 83, Zone 18 Drawing by: F. Poudrier
Supervised by: J.P. Bérubé, Ing. Geo Date: August 23, 2006

Scale 1: 10 000
0 500 1000
metres



- GEOLOGICAL LEGEND**
- (V4/I4) Ultramafic Volcanic Rocks and Intrusive Volcanic Rocks?
 - I1 Felsic Intrusive Rocks
 - I1C Granodiorite
 - I1D Tonalite
 - I1G Pegmatite
 - IP Charnockite
 - ZD Syenite
 - I3 Mafic Intrusive Rocks
 - I3A Gabbro
 - I3A-I4 Gabbro-Ultramafic Volcanic Rocks
 - I3B Diabase
 - I3B? Diabase?
 - I4 Ultramafic Intrusive Rocks
 - I4-V4 Ultramafic Intrusive Rocks- Ultramafic Volcanic Rocks
 - M1-S3 Gneiss-Iron Formation-Greywacke
 - M8 Schiste
 - M16 Amphibolite
 - S1M4 Sediments and Paragneiss
 - S3 Greywacke
 - S9 Iron formation
 - S9-S3 Iron formation-Greywacke
 - S9/S10 Iron formation-Chert
 - S9B Banded Iron Formation
 - S9B/S9E Banded Iron Formation and Wacke
 - S9D/S10 Chert/Silicified Iron Formation
 - V1-V2 Felsic Volcanic Rocks-Intermediate Volcanic Rocks
 - V1B Rhyolite
 - V3B Basalt
 - V4 Ultramafic Volcanic Rocks
 - V4-I4-V3B Ultramafic Volcanic Rocks-Ultramafic Intrusive Rocks-Basalt

- GEOPHYSICAL LEGEND**
- Weak IP Conductor
 - Strong IP Conductor
 - Weak axes IP Conductor
 - Strong axes IP Conductor
 - Weak axes EM Conductor
 - Strong axes EM Conductor
 - Trench
 - Fault
 - 1976 Diamond Drill Hole
 - 2006 Diamond Drill Hole

- INFRASTRUCTURE**
- Main Road
 - Bush Road
 - Electrical Power Line

REÇU AU MRNF
20 FEV. 2007
Direction du développement minier

GM 6 2 8 9 3

CAMBIOR **ELORO RESOURCES LTD.**
MRB associates
Lemoyne North Property
Enlarged Geological Map

NTS: 33G12 Map N° 2
Grid UTM: NAD 83, Zone 18 Drawing by: F. Poudrier
Supervised by: J.P. Bérubé, Ing. Geo Date: August 18, 2006

