
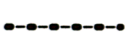


**LEGEND**

-  Main Road
-  Electrical Power Line
- 0092615** Claim number

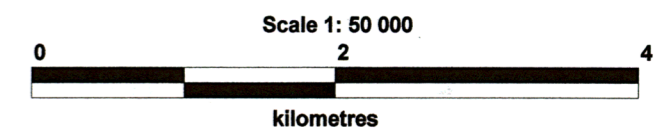


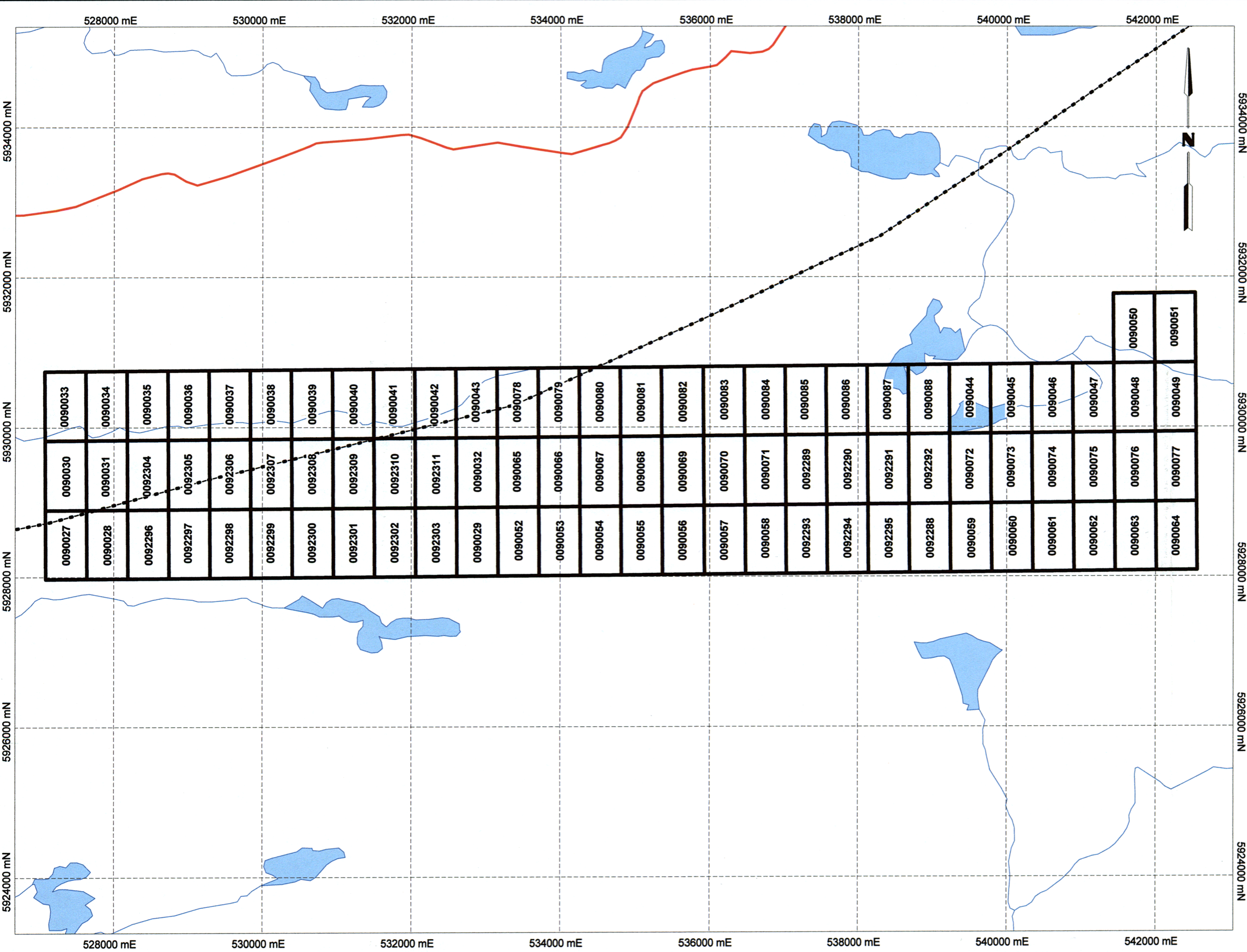
**ELORO RESOURCES LTD**





**Claim Map  
Lemoyne North Property**

Grid UTM: NAD 83, Zone 18	Drawn: F. Poudrier
Supervised: M. Bourgoin, P. Geo	Date: Nov. 30th 2005





**LEGEND**

-  **Main Road**
-  **Electrical Power Line**
- 0092615** **Claim number**

GM 6 2 6 4 0

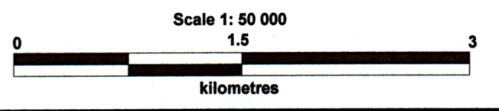


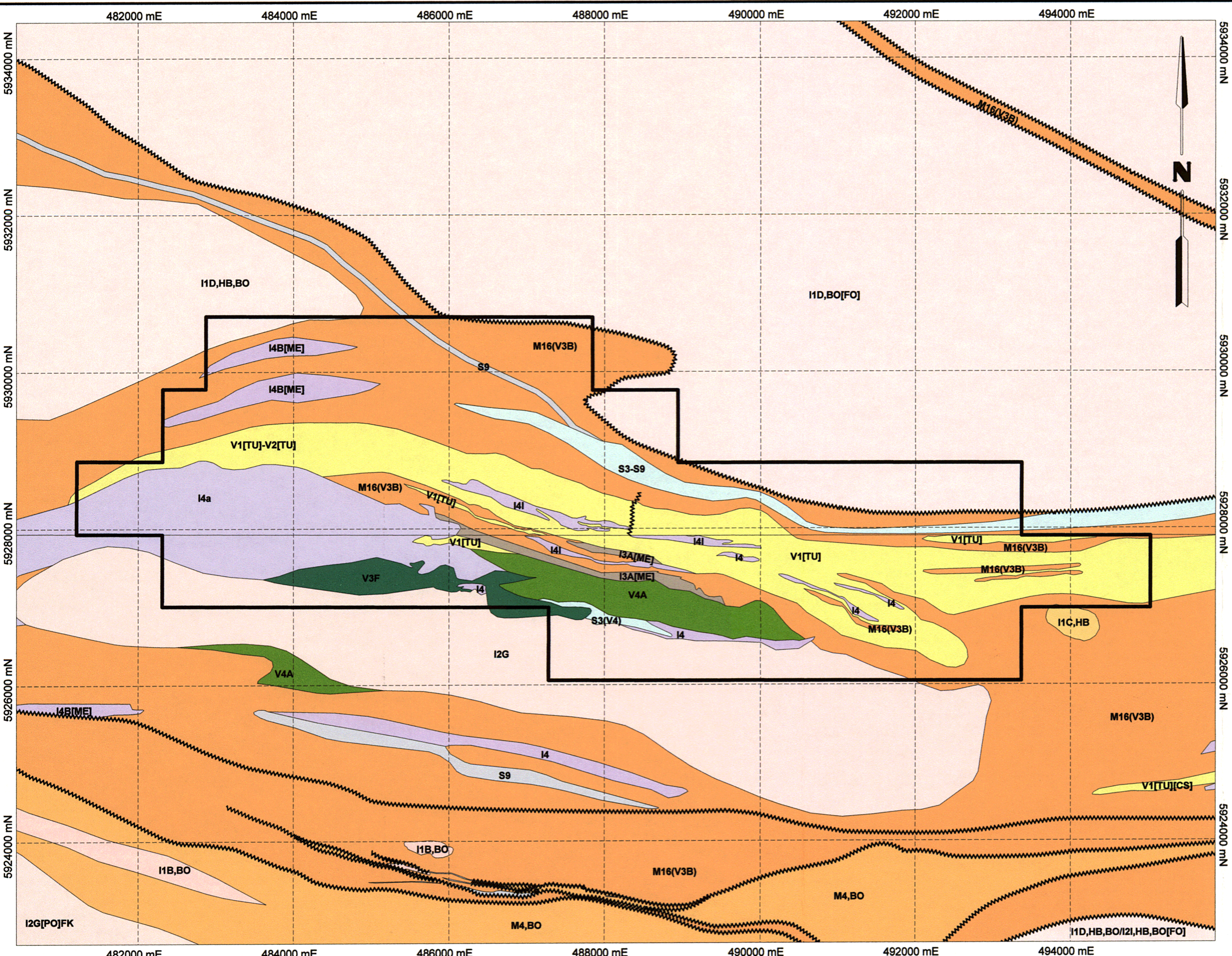
**ELORO RESOURCES LTD**

**MRB & associates**  
mining consultants

**Claim Map**  
**Taiga Property**

Grid UTM: NAD 83, Zone 18	Drawn: F. Poudrier
Supervised: M. Bourgoin, P. Geo	Date: Nov. 30th 2005





**GEOLOGICAL LEGEND**

- I1B,BO (Biotite Granit)
- I1B[EN]M4,BO (Biotite Paragneiss)
- I1C,BO (Biotite Granodiorite)
- I1C,HB (Hornblende Granodiorite)
- I1D,BO (Biotite Tonalite)
- I1D,BO,HB/M1(I1D)[IU]I1B (Granit injected Tonalite & Tonalite Gneiss)
- I1D,BO[FO] (Foliated Biotite Tonalite)
- I1D,HB,BO (Biotite-Hornblende Tonalite)
- I1D,HB,BO/I2I,HB,BO[FO] (Foliated Quartz Diorite & altered Tonalite)
- I1D,MG (Magnetite Tonalite)
- I1D-I2J (Tonalite & Diorite)
- I2G (Quartz Monzodiorite)
- I2G[PO]FK (QFP Monzodiorite)
- I2I[PO]PG (QFP Diorite)
- I2J (Diorite)
- I3A (Gabbro)
- I3A(PX,HB) (Pyroxene-Hornblende Gabbro)
- I3A[ME] (Metamorphosed Gabbro)
- I4 (Ultramafic Intrusion)
- I4a (Peridotite-Metapyroxenite-Metagabbro)
- I4b (Peridotite-Pyroxenite)
- I4B[ME] (Metamorphosed Pyroxenite)
- I4I (Peridotite)
- I4O (Ultramafic Lamprophyre)
- M1(I1D)BO (Biotite Tonalitic Gneiss)
- M1(I1D)BO,HB (Biotite-Hornblende Diorite Gneiss)
- M1(I2J)HB (Hornblende-rich diorite Gneiss)
- M16(V3B) (Metabasalt Amphibolite)
- M4,BO (Biotite-rich Paragneiss)
- M4,BO,MG (Biotite-magnetite Paragneiss)
- M4,BO[IU]I1B (Granit injected Biotite Paragneiss)
- S3 (Wacke)
- S3(V4) (Ultramafic Wacke)
- S3-S9 (Wacke & Iron formation)
- S3D-S4D (Feldspathic Wacke & Polygenic conglomerat)
- S9 (Iron formation)
- V1[TU] (Felsic Tuff)
- V1[TU]-V2[TU] (Felsic to intermediate Tuff)
- V1[TU][CS] (Sheared Felsic Tuff)
- V3F (Magnesian Basalt)
- V4A (Komatiite)
- V4B (Pyroxenitic Komatiite)



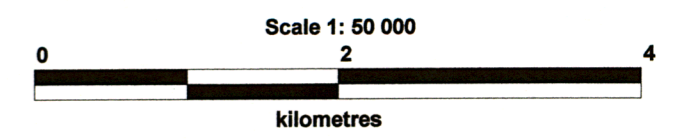
**ELORO RESOURCES LTD**



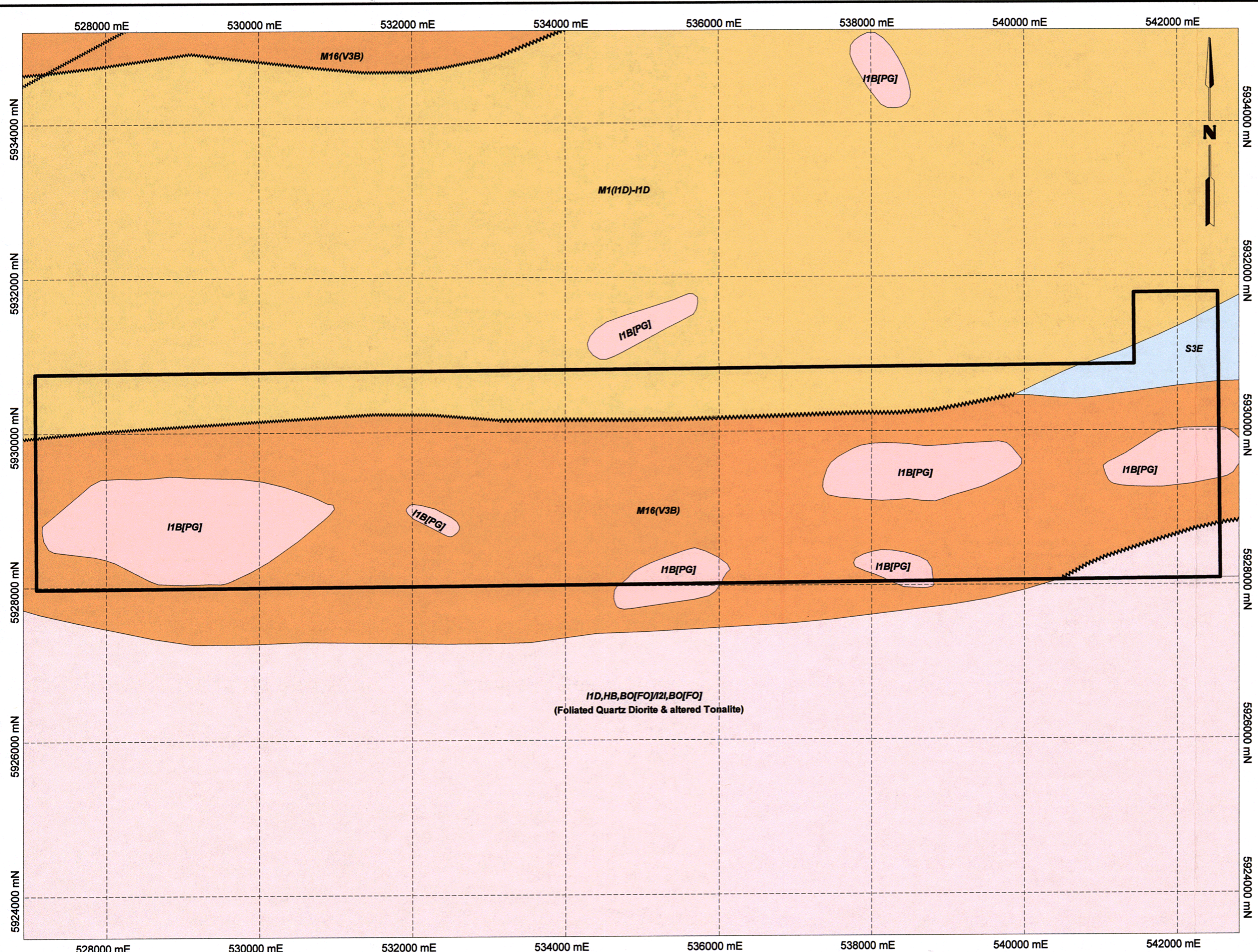
**Local Geological Map  
Lemoyne North Property**

Grid UTM: NAD 83, Zone 18      Drawn: F. Poudrier

Supervised: M. Bourgoïn, P. Geo      Date: Nov. 30th 2005



GM 62640



**GEOLOGICAL LEGEND**

- I1 (Felsic Intrusive Rocks)
- I1B (Granite)
- I1B,BO (Granite Biotite)
- I1B[PG] (Granitic Pegmatite)
- I1C (Granodiorite)
- I1C-I2J (Granodiorite & Diorite)
- I1D,HB,BO[FO]/I2I,BO[FO]
- I2G[PO]FK (QFP Diorite)
- I3A (Gabbro)
- I4 (Ultramafic Intrusion)
- M1(I1D)-I1D (Tonalitic Gneiss & Tonalite)
- M16(V3B) (Metabasalt Amphibolite)
- M4 (Paragneiss)
- S3-S9 (Wacke & Iron Formation)
- S3E (Wacke lithic)
- S4 (Conglomerat)
- S9 (Iron formation)
- S9-S3 (Iron Formation - Wacke)
- V1[TU] (Felsic Tuff)

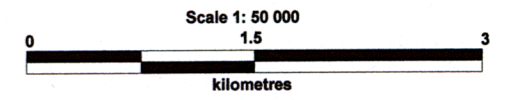


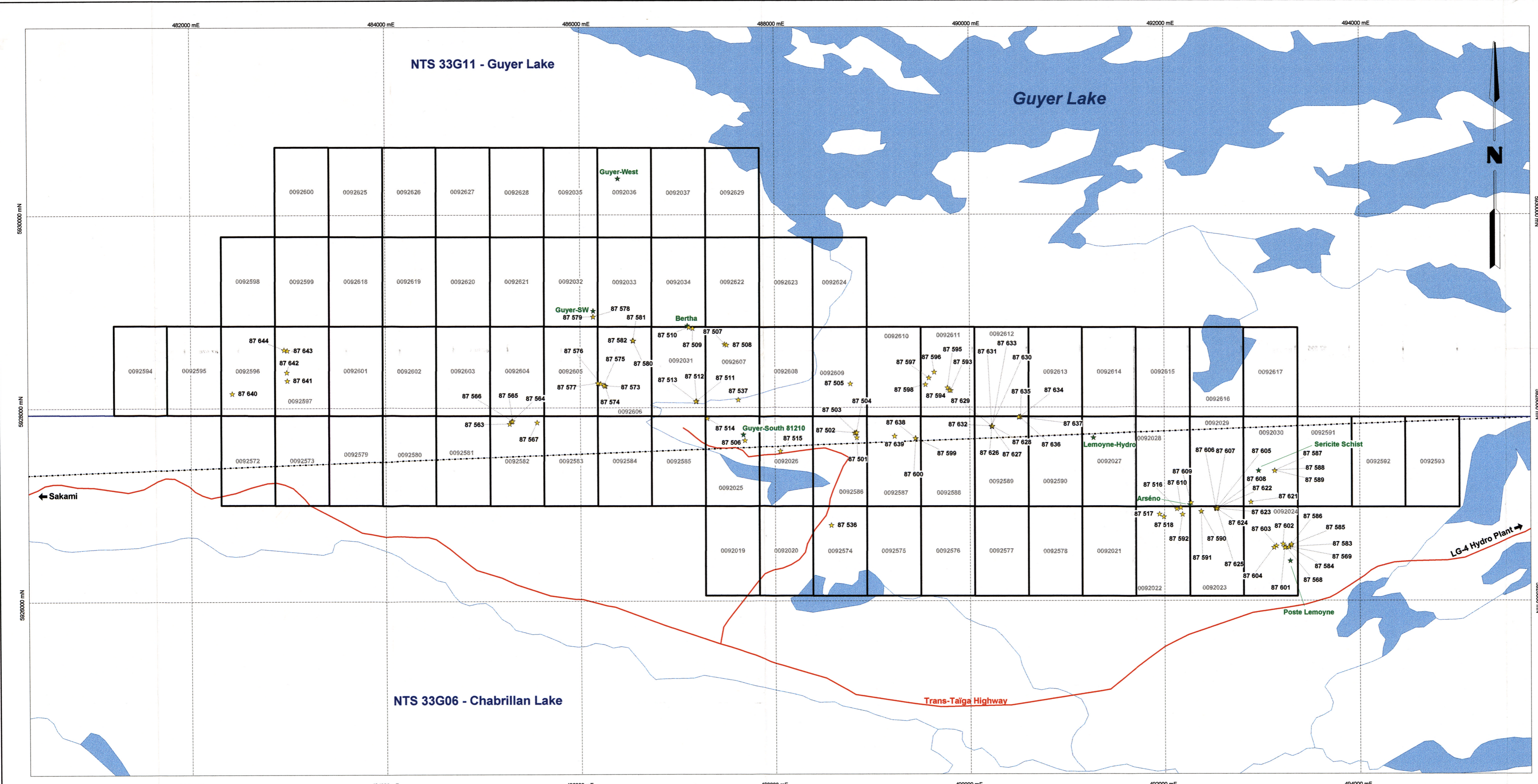
**ELORO RESOURCES LTD**

**MRB & associates**  
mining consultants






**Local Geological Map**  
**Taïga Property**

<b>Grid UTM: NAD 83, Zone 18</b>	<b>Drawn: F. Poudrier</b>
<b>Supervised: M. Bourgoïn, P. Geo</b>	<b>Date: Nov. 30th 2005</b>





**LEGEND**

-  Main Road
-  Electrical Power Line
-  87 605 2005 Surface Grab Samples
-  Historical Mineralized Showing
-  0090067 Claim N°

REÇU AU MRNF  
2 2 SEP. 2006  
Direction du développement minéral

Ressources Naturelles  
Secteur mines  
2 1 SEP. 2006  
Bureau Régional Val-d'Or



**ELORO RESOURCES LTD**

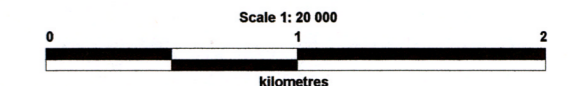
**MRB & associates**  
mining consultants

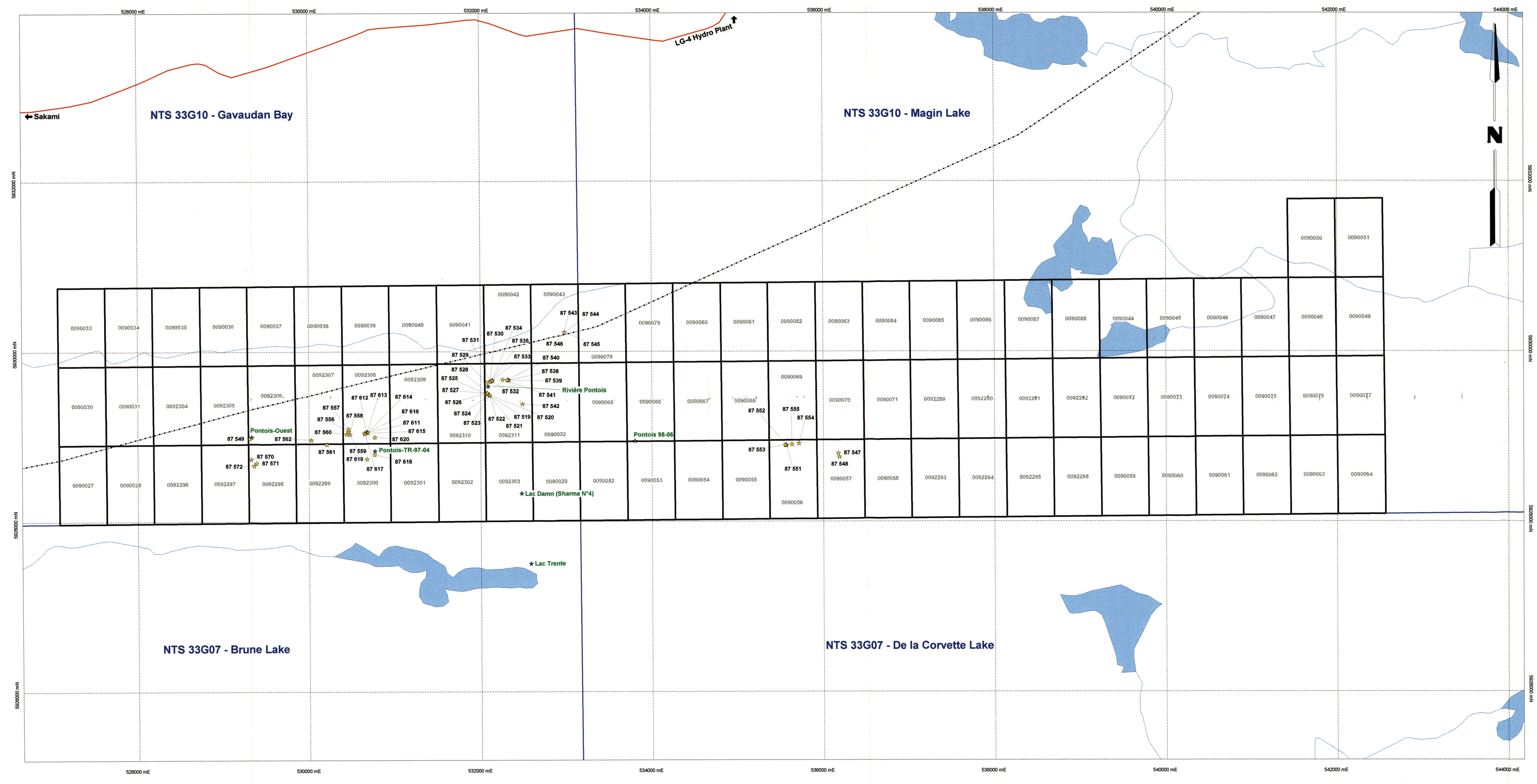
Location Map  
Sampling Program - Fall 2005

Map N°1 Lemoyne North Property

Grid UTM: NAD 83, Zone 18 Drawn: F. Poudrier

Supervised: M. Bourgoïn, P. Geo Date: Nov. 30th 2005





**LEGEND**

- Main Road
- Electrical Power Line
- 87 605 2005 Surface Grab Samples
- Historical Mineralized Showing
- 0090067 Claim N°



Resources Naturelles  
Secteur mines  
21 SEP. 2006  
Bureau Régional Val-d'Or



**ELORO RESOURCES LTD**



**Location Map  
Sampling Program - Fall 2005**

Map N°2	Taïga Property
Grid UTM: NAD 83, Zone 18	Drawn: F. Poudrier
Supervised: M. Bourgoin, P. Geo	Date: Nov. 30th 2005
Scale 1: 20 000	