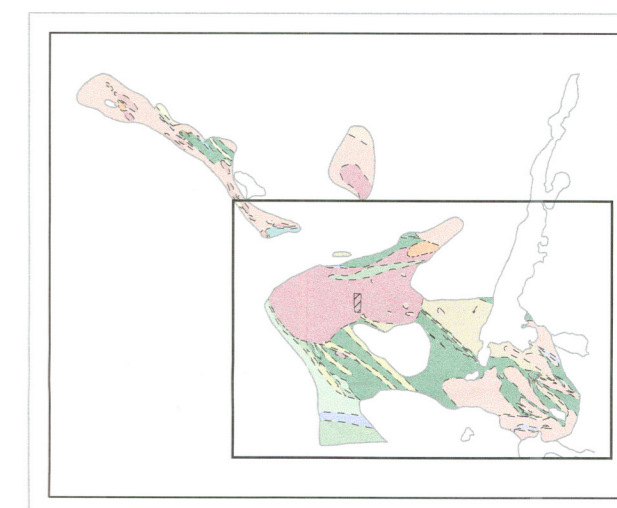
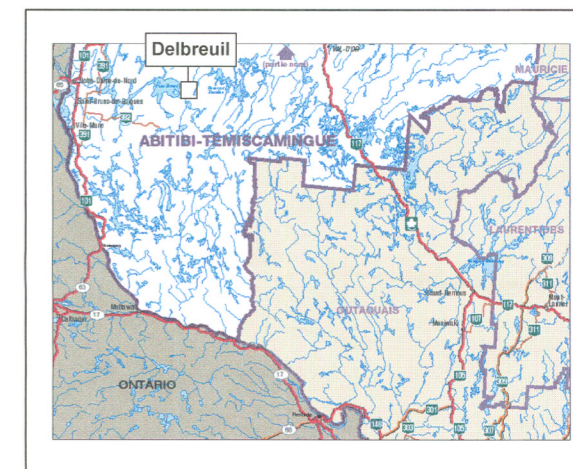
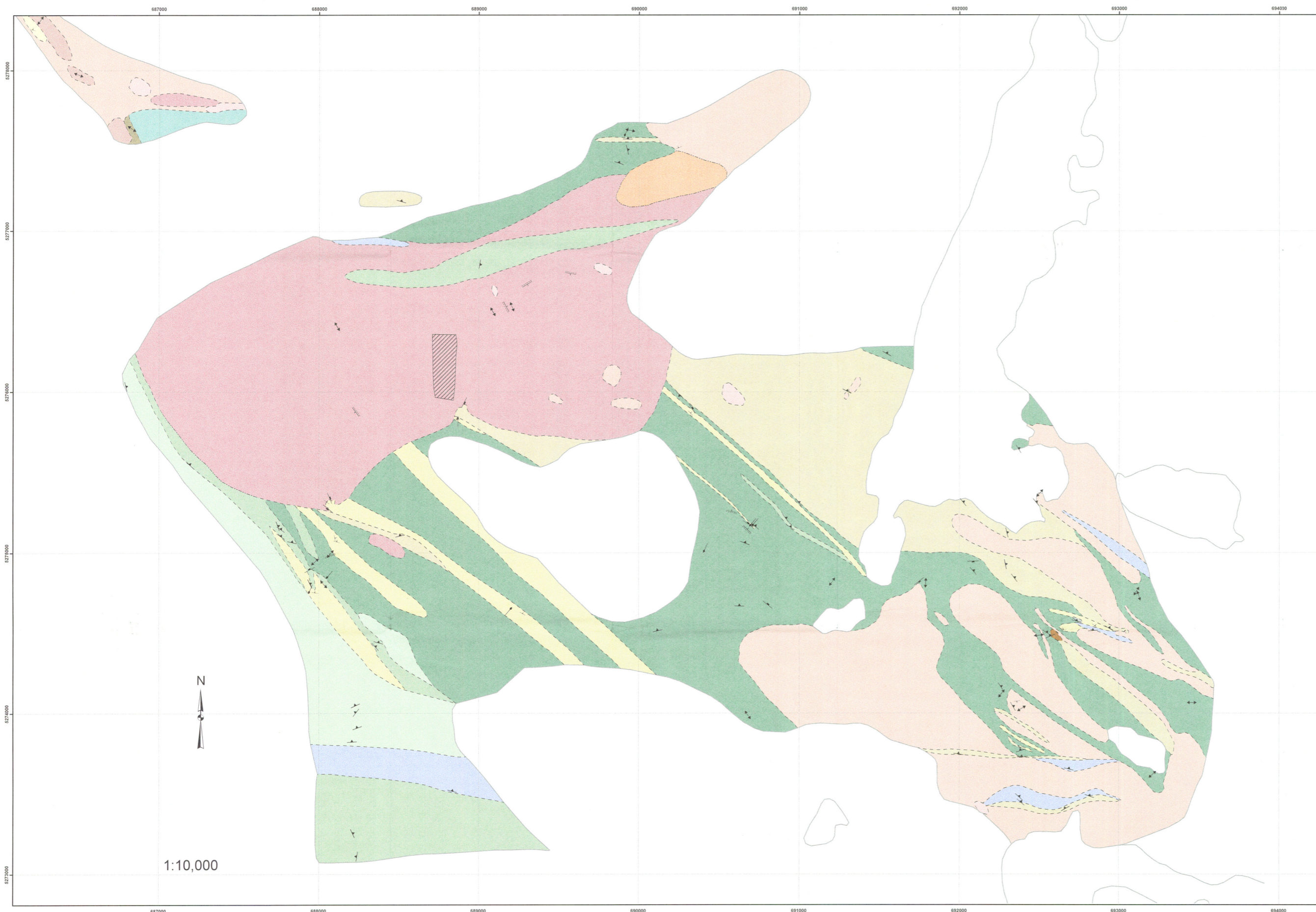


Geological Map of the Delbreuil Canton



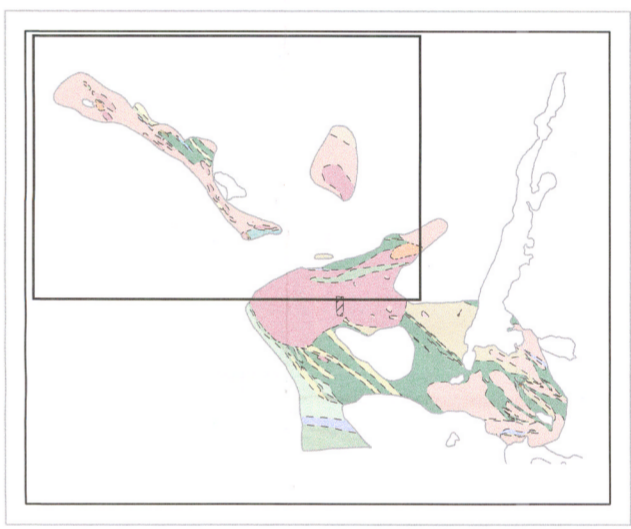
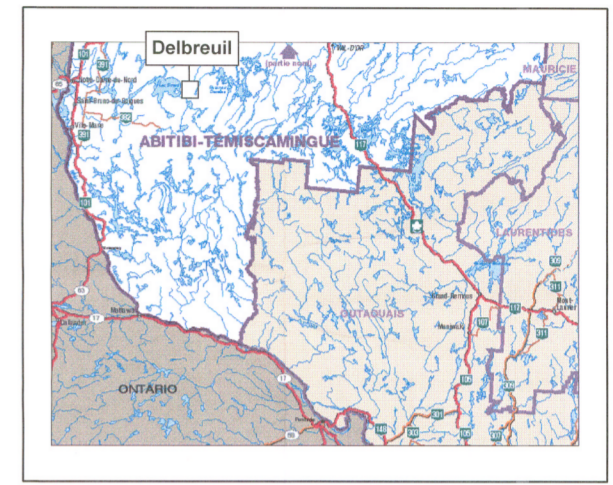
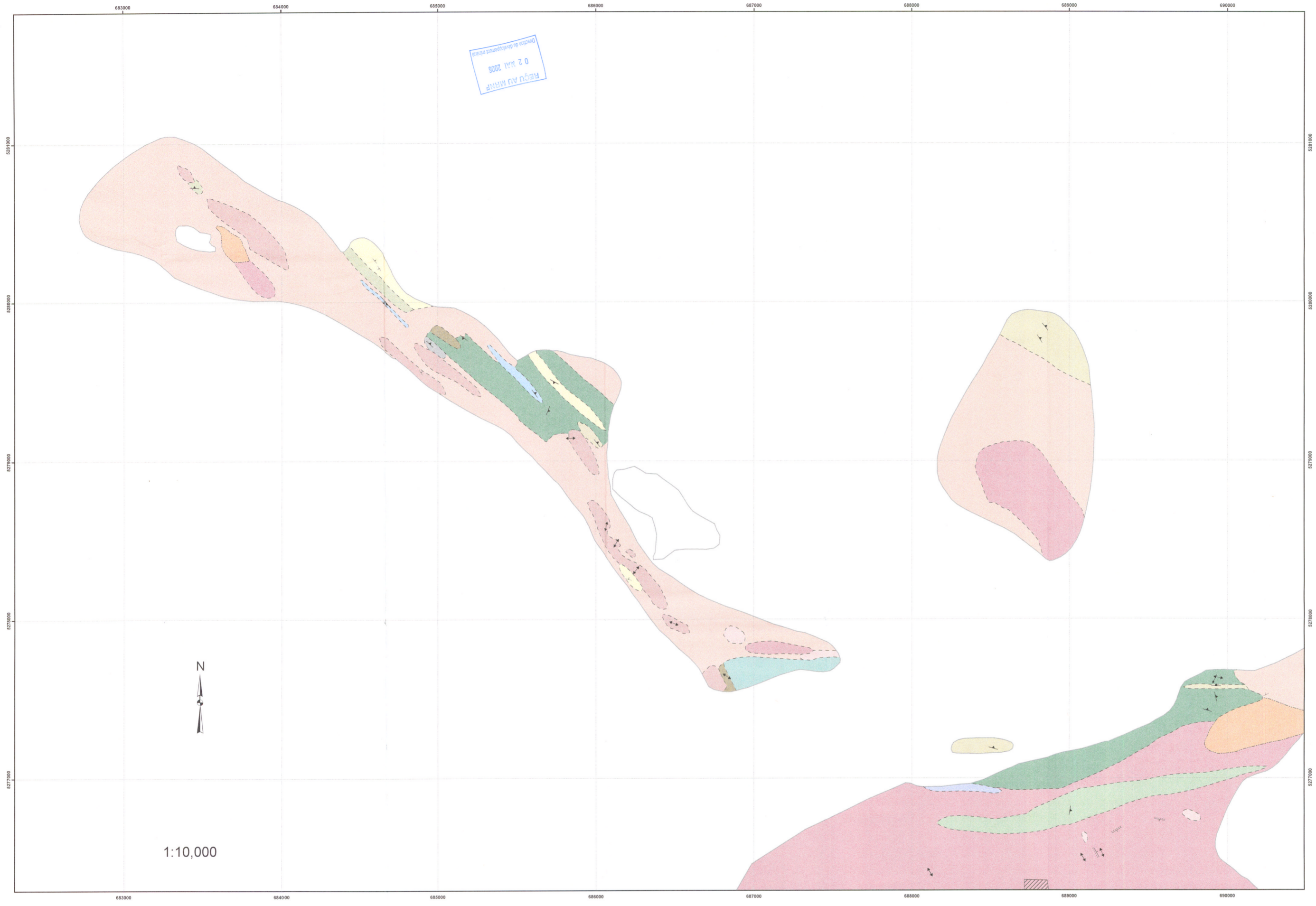
Delbreuil Canton

Projection: UTM Zone 17T NAD83
 Geological mapping carried out in the summer of 2005
 by Christina Snow for Fieldex Exploration Inc.
 All units of Delbreuil are metamorphosed
 therefore meta is implied in the unit names

Legend			
— Contact	Sulfides associated with quartz veins	Intrusive Rocks	Metamorphic Rocks
- - - Inferred Contact	Gossin	Gabbro	Amphibolite
- · - - Inferred Gradational Contact	Supracrustal Rocks	Monzodiorite	Biotite Schist
↓ Younging Direction <i>Determined by pillow keels or fining of sediments, volcanoclastics, or spinifex textures</i>	Basalt	Monzonite	Biotite-amphibolite Schist
Structures	Komatiite	Granite and Pegmatite	Fine grained white mica-amphibolite Schist
↑ Layers <i>Sedimentary bedding and modal layering in igneous rocks</i>	Tuffite <i>Mixture of sediment and pyroclastic materials</i>	Pegmatite	Augen Gneiss
↖ Contact <i>Contact strike/dip between units and komatiite flows</i>	Sediments		Biotite-amphibolite Gneiss
↔ Lineation <i>Mineral lineations and pillow structure elongation trends</i>	Graphite		
↘ Schistosity / Gneissosity			
↗ Shear Zone <i>Often mylonitized and filled with epidote</i>			

#614210

Geological Map of the Delbreuil Canton North-west Portion



Delbreuil Canton

Projection: UTM Zone 17T NAD83
 Geological mapping carried out in the summer of 2005
 by Christina Snow for Fieldex Exploration Inc.
 All units of Delbreuil are metamorphosed
 therefore meta is implied in the unit names

Legend		
— Contact	Sulfides associated with quartz veins	Intrusive Rocks
- - - Inferred Contact	Gossin	Gabbro
- · - · - Inferred Gradational Contact	Supracrustal Rocks	Monzodiorite
↓ Younging Direction <i>Determined by pillow keels or fining of sediments, volcanoclastics, or spinifex textures</i>	Basalt	Monzonite
Structures	Komatiite	Granite and Pegmatite
† Layers <i>Sedimentary bedding and modal layering in igneous rocks</i>	Tuffite <i>Mixture of sediment and pyroclastic materials</i>	Pegmatite
† Contact <i>Contact strike/dip between units and komatiite flows</i>	Sediments	
↔ Lineation <i>Mineral lineations and pillow structure elongation trends</i>	Graphite	
† Schistosity / Gneissosity		Metamorphic Rocks
† Shear Zone <i>Often mylonitized and filled with epidote</i>		Amphibolite
		Biotite Schist
		Biotite-amphibolite Schist
		Fine grained white mica-amphibolite Schist
		Augen Gneiss
		Biotite-amphibolite Gneiss