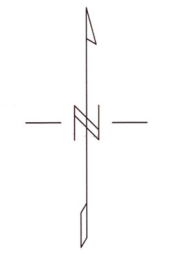
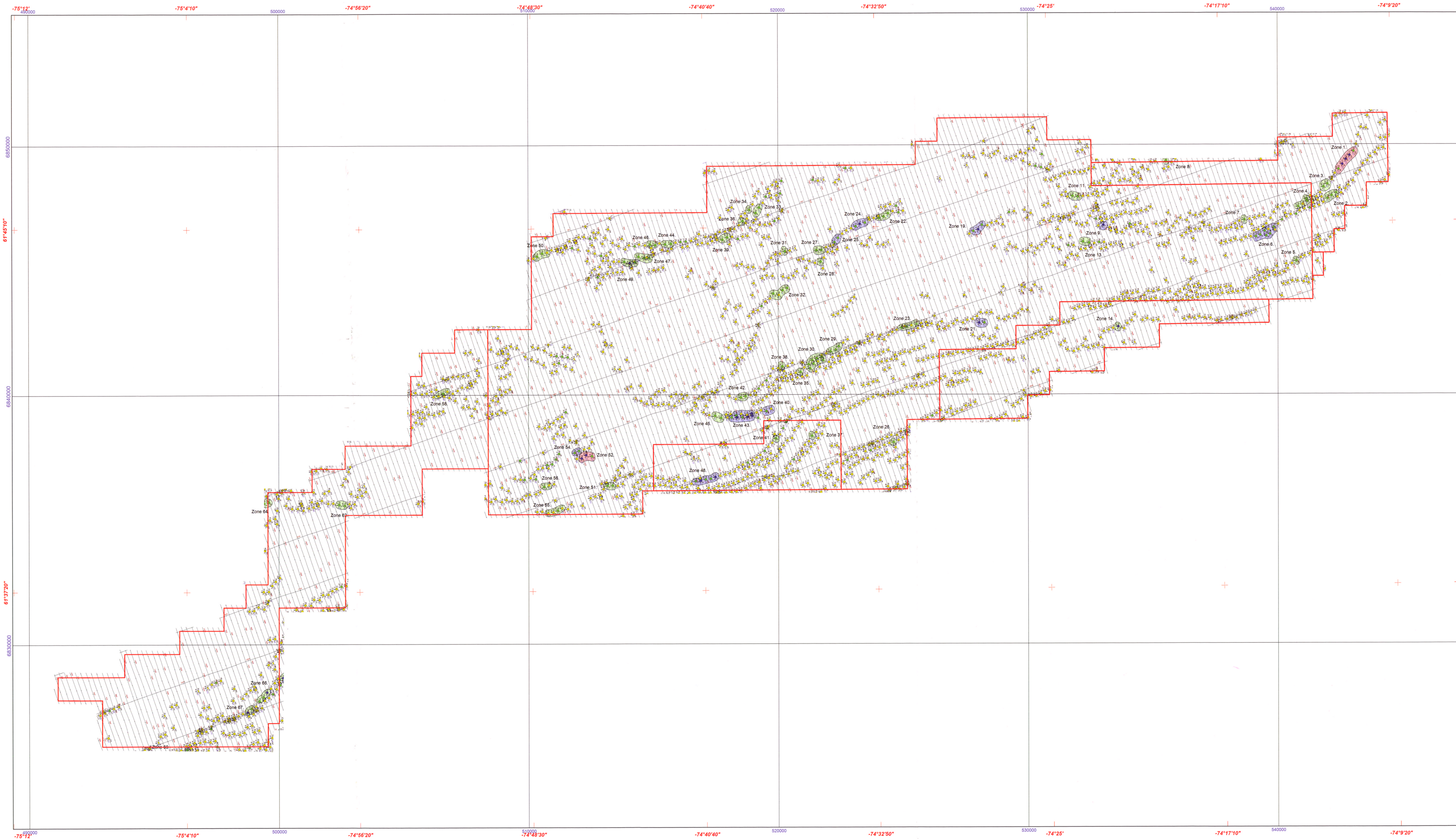


Spartin Survey - Canada



Zone Grade

- High Priority
- Medium Priority
- Low Priority

Anomaly Grade

- A (excellent)
- B (good)
- C (moderate)
- D (poor)

DIP

- Interpreted Conductor Dip
- Graphically Displayed

CTP

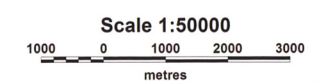
- < 5 elements
- 5 - 10 elements
- 10 - 20 elements
- > 20 elements

Colors (C): Profile (P), Profile (T)
 CTP element (C) Profile
 BMA Anomaly (A) Dip Grade + Magnetic Association (M)

System Specifications

Electromagnetic System	Spectrem 2000
Channels	X and Z
Sampling Time	0.2 seconds
Sampling Interval (ground)	Approximately 12 metres
Electromagnetic Processing	DirC Corrected
Transmitter Height	81.0 Metres
Tx - Rx Horizontal separation	122.0 Metres
Tx - Rx Vertical separation	38.0 Metres
Magnetometer	Towed Bird, EM Synchronous, Scintrex CS-8 Sensor
Sampling Time	0.2 seconds
Sampling Interval (ground)	Approximately 12 metres
Magnetic Processing	Tie Line Levelling and Microlevelling
Magnetometer Height	72.0 Metres
Spectrometer	Exploranium GR20 - 288 Channels
Crystal Volume	2" 1024 cubic inch packs
Sampling Time	1.0 seconds
Sampling Interval (ground)	Approximately 60 metres
Aircraft	DC3 TP (2S - ASN)
Navigation	Novatel RT-20 Starfire, real-time DGPS
Altimeter(s)	Honeywell Radar plus Ring Laser
Nominal Traverse Line Spacing	200 Metres
Nominal Tie Line Spacing	2000 Metres
Nominal Traverse Bearing	161.0 Degrees
Nominal Tie Line Bearing	281.0 Degrees
Grid Mesh Size	80.0 Metres
Data Acquisition / Processing	Spectrem Air
Date Flown	September 2004
Date of Map Production	October 2005

Further Technical details can be found at www.spectrem.ca

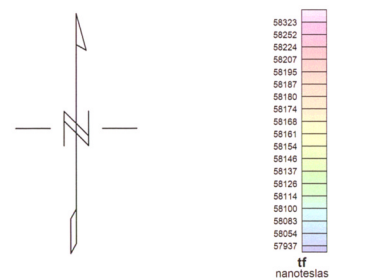
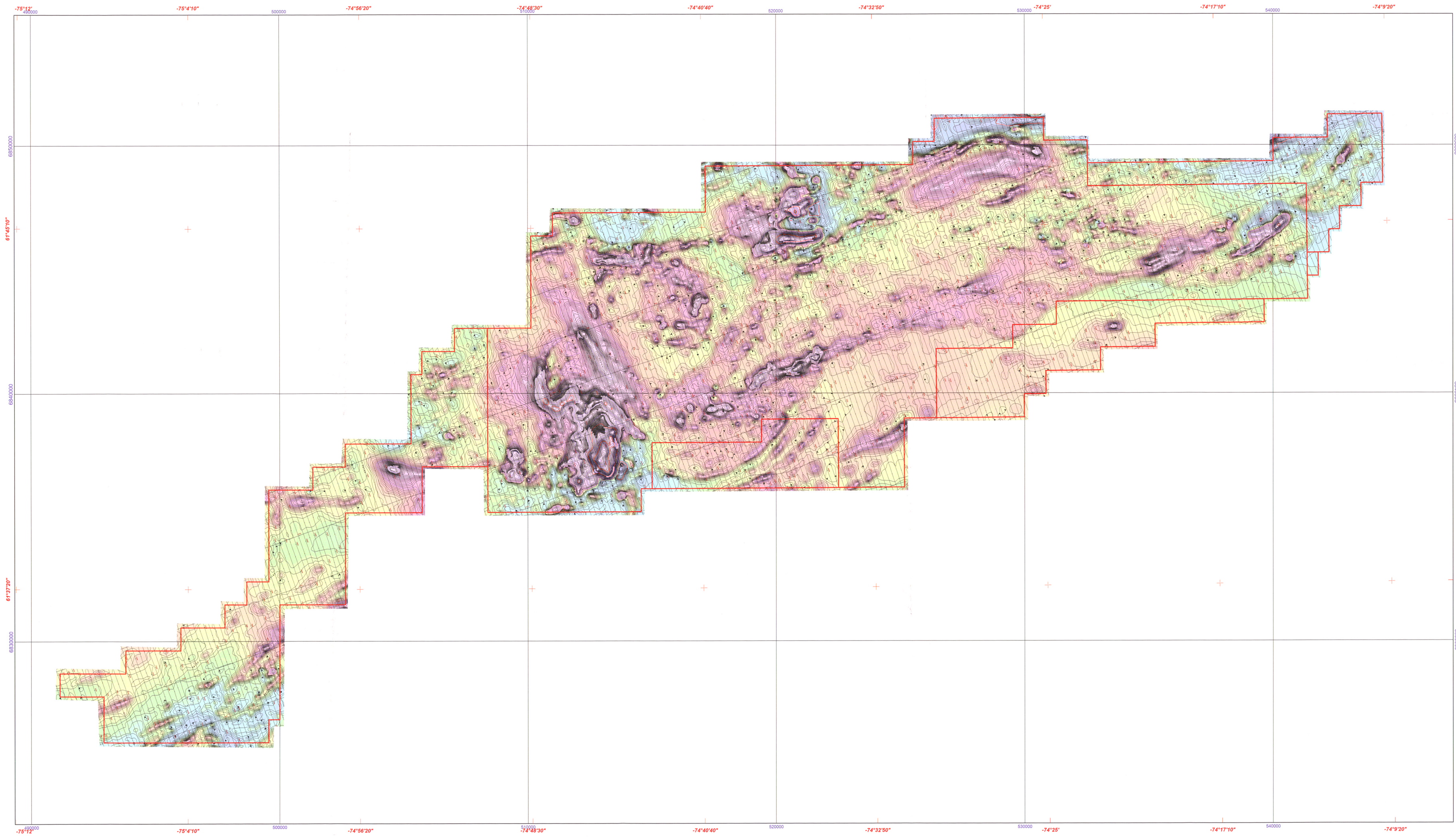


WGS 84 / UTM zone 18N
 GM 6 2 2 3 1



Anglo American Exploration Canada Ltd
 Spartin Survey - Canada
 AEM Anomaly Map
 with Flight Path
 Spectrem 2000 - Airborne EM Survey.

Spartin Survey - Canada



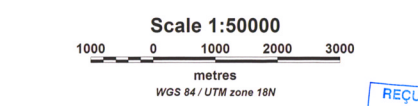
Contour Intervals

10 nt Contour	—
50 nt Contour	—
250 nt Contour	—
1000 nt Contour	—

System Specifications

Electromagnetic System	Spectrem 2000
Channels	X and Z
Sampling Time	0.2 seconds
Sampling Interval (ground)	Approximately 12 metres
Electromagnetic Processing	Drift Corrected
Transmitter Height	91.0 Metres
Tx - Rx Horizontal separation	122.4 Metres
Tx - Rx Vertical separation	38.8 Metres
Magnetometer	Towed Bird, EM Synchronous, Scintrex CS-8 Sensor
Sampling Time	0.2 seconds
Sampling Interval (ground)	Approximately 12 metres
Magnetic Processing	Tie Line Levelling and Microlevelling
Magnetometer Height	72.0 Metres
Spectrometer	Exploranium GR820 - 256 Channels
Crystal Volume	2 * 1024 cubic inch packs
Sampling Time	1.0 seconds
Sampling Interval (ground)	Approximately 60 metres
Aircraft	DC3 TP (ZS - ASN)
Navigation	Novatel RT-20 Starfix, real-time DGPS
Altimeter(s)	Honeywell Radar plus Ring Laser
Nominal Traverse Line Spacing	200 Metres
Nominal Tie Line Spacing	2000 Metres
Nominal Traverse Bearing	161.0 Degrees
Nominal Tie Line Bearing	251.0 Degrees
Grid Mesh Size	60.0 Metres
Data Acquisition / Processing	Spectrem Air
Date of Map Production	October 2006

Further Technical details can be found at www.spectrem.co.za



REQU AU MRNF
19 DEC. 2005
Direction du Développement minéral

GM 6 2 2 3 1

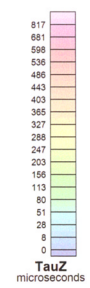
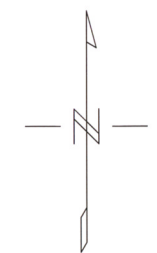
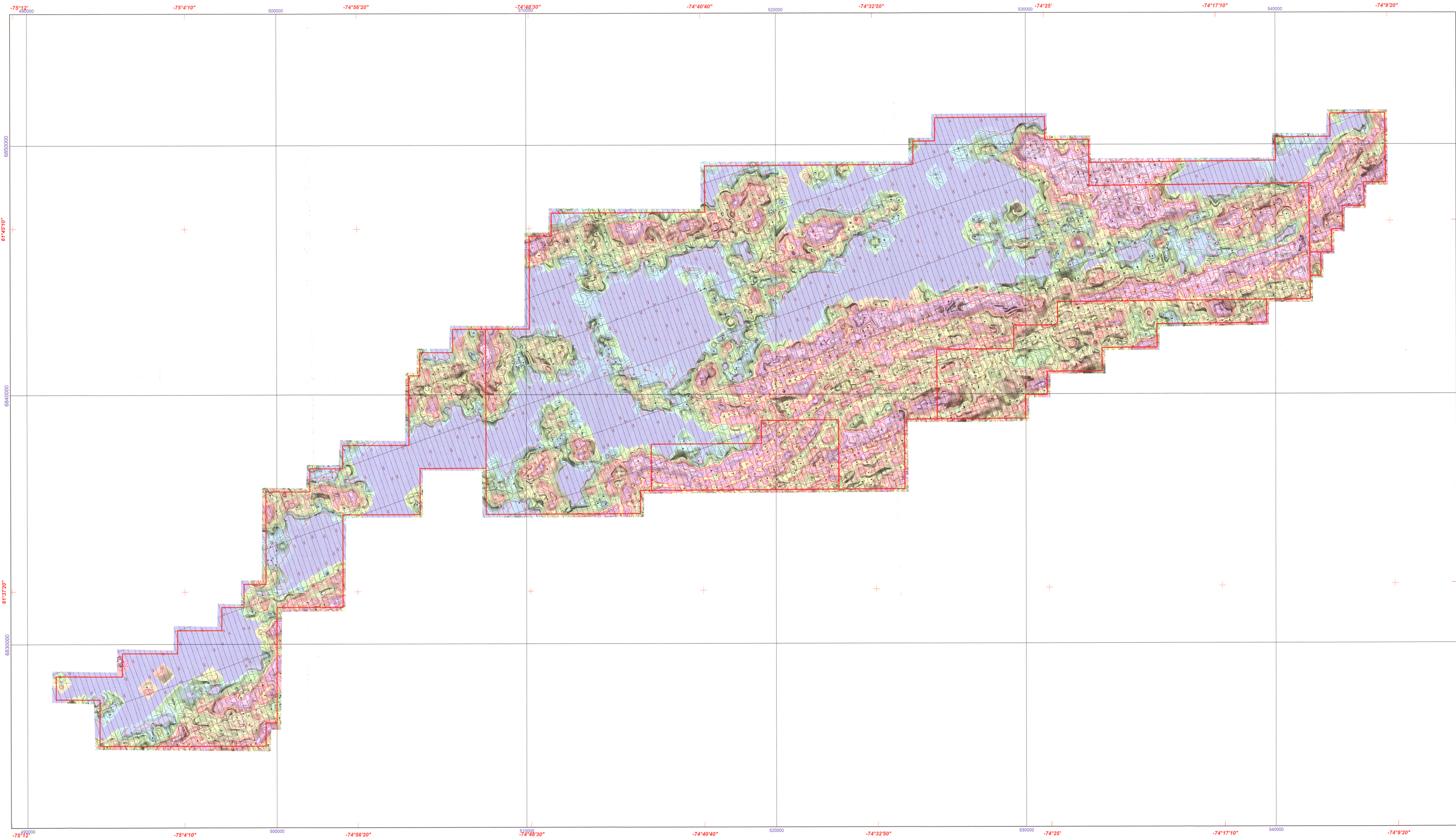
Anglo American Exploration Canada Ltd

Spartin Survey - Canada

Total Field Magnetic Intensity
Colour Contour Map with Flight Path

Spectrem 2000 - Airborne EM Survey.

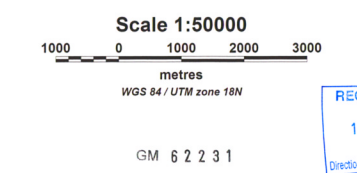
Spartin Survey - Canada



Contour Intervals	
10 µs Contour	—
50 µs Contour	—
250 µs Contour	—
500 µs Contour	—

System Specifications	
Electromagnetic System	Spectrem 2000
Channels	X and Z
Sampling Time	0.2 seconds
Sampling Interval (ground)	Approximately 12 metres
Electromagnetic Processing	Drift Corrected
Transmitter Height	91.9 Metres
Tx - Rx Horizontal separation	122.4 Metres
Tx - Rx Vertical separation	34.8 Metres
Magnetometer	Towed Bird, EM Synchronous, Schlumberger CE-2 Sensor
Sampling Time	0.2 seconds
Sampling Interval (ground)	Approximately 12 metres
Magnetic Processing	Tx Line Levelling and Microlevelling
Magnetometer Height	72.9 Metres
Spectrometer	Explosionum GR820 - 286 Channels
Crystal Volume	2" 1524 cubic inch packs
Sampling Time	1.0 seconds
Sampling Interval (ground)	Approximately 60 metres
Aircraft	DC3 TP (25 - ASK)
Navigation	Novatel RT-20 Starfix, real-time DGPS
Altimeter(s)	Honeywell Radar plus Ring Laser
Nominal Traverse Line Spacing	200 Metres
Nominal Tie Line Spacing	200 Metres
Nominal Traverse Bearing	161.0 Degrees
Nominal Tie Line Bearing	281.0 Degrees
Grid Mesh Size	88.8 Metres
Data Acquisition / Processing	Spectrem Air
Date Flown	September 2005
Date of Map Production	October 2005

Further Technical details can be found at www.spectrem.co.za



REÇU AU MRNF
1 9 DEC. 2005
Direction du Développement minéral

Anglo American Exploration Canada Ltd
Spartin Survey - Canada
EM Z Channel Time Constant
Colour Contour Map with Flight Path
Spectrem 2000 - Airborne EM Survey.