

DIAMOND DISCOVERIES INTERNATIONAL CORP.

FIG 1

# DIAMOND DISCOVERIES INTERNATIONAL

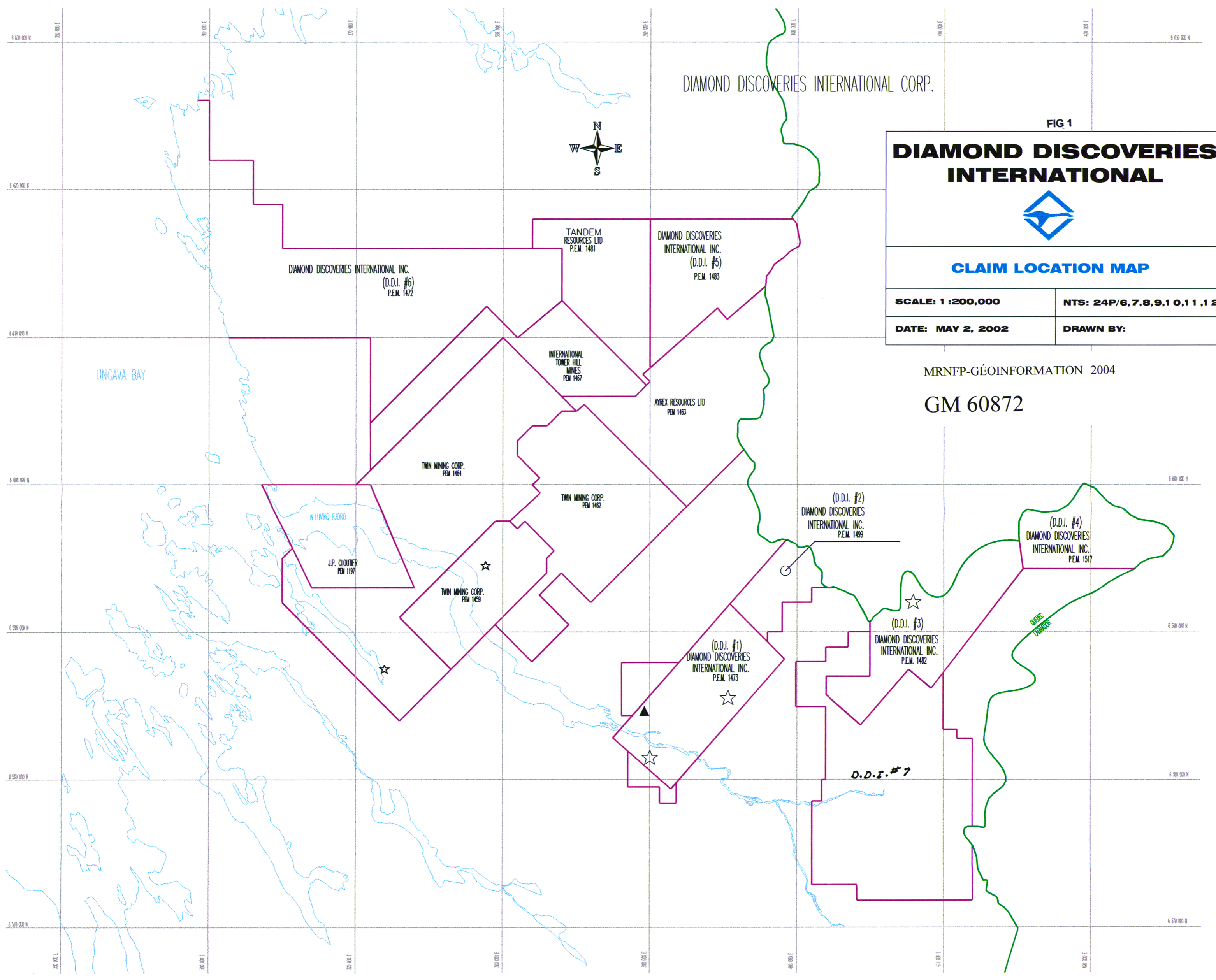


## CLAIM LOCATION MAP

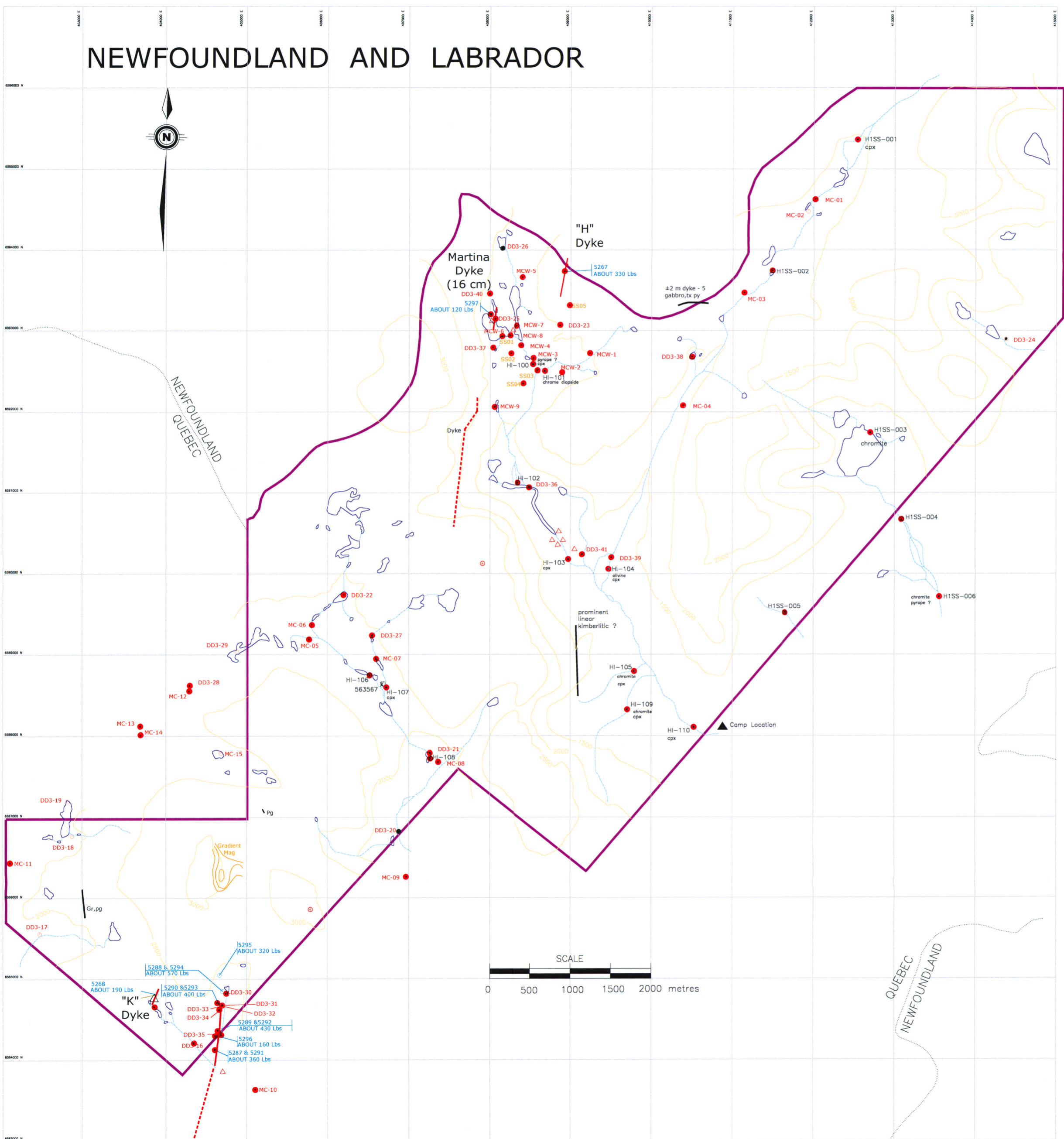
SCALE: 1 :200,000	NTS: 24P/6,7,8,9,10,11,12
DATE: MAY 2, 2002	DRAWN BY:

MRNFP-GÉOINFORMATION 2004

### GM 60872



# NEWFOUNDLAND AND LABRADOR



## LEGEND

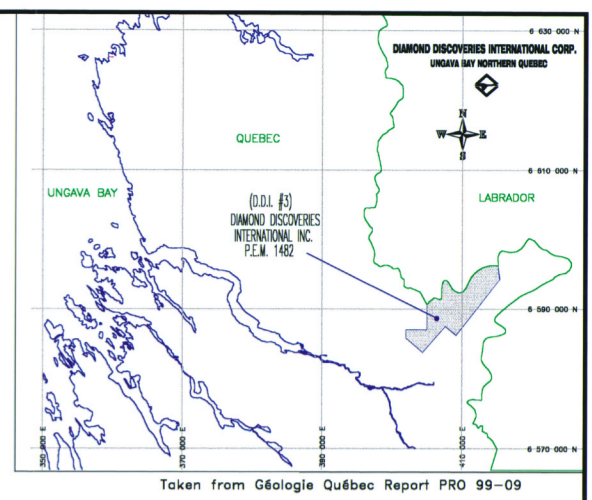
- 1 GRANITE / GRANULITE
  - 1a granite (undifferentiated)
  - 1b granodiorite
  - 1c diorite
- 2 GNEISS (garnet bearing)
  - 2a granite gneiss
  - 2b oxidized biotite +/- graphite gneiss
  - 2c quartz gneiss (80% quartz-feldspar)
  - 2d biotite-amphibole gneiss
- 3 PERIDOTITE
  - 3a
- 4 KIMBERLITE COARSE GRAINED
  - 4a kimberlite fine grained
  - 4b tuff <20% fragments
  - 4c breccia >20% fragments
  - 4d potassium altered & welded
- 5 GABBRO
  - 5a gabbro diabase
- Pg — 6 PEGMATITE

## GEOLOGICAL SYMBOLS

- ? - - - - 4 Interpreted location of Kimberlite / Lamprophyre
- ~~~~~ Fault / defined, approximate
- 3000— Topographic contour (250 m interval)

## SAMPLE LOCATIONS

- H2SS-013 Stream Sediment Sample Site (no KIM's)
- H2SS-013 Stream Sediment Sample Site (with KIM's)
- x H2RX-001 Kimberlite / lamprophyre rock sample site
- x H2HS-001 Rock Sample Site
- ▲ 5100 Float Sample Site
- MC-04 STREAM SEDIMENT SAMPLE SITE (HEAVY MINERAL CONCENTRATE (HMC))
- MCW-1 STREAM SEDIMENT SAMPLE SITE (HMC)
- DD3-38 STREAM SEDIMENT SAMPLE SITE (HMC)
- SS05 SOIL SAMPLE SITE
- 5297 ABOUT 120 Lbs ROCK SAMPLE SITE WITH WEIGHT OF SAMPLE
- K KIMBERLITE DYKE SOIL



MRNFP-GÉOINFORMATION 2004  
GM 60872

# DIAMOND DISCOVERIES INTERNATIONAL

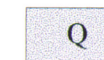


FIG.2  
SAMPLE LOCATION MAP

Scale: 1:20,000	NTS: 24P	<b>DDI-3</b>
Date: Dec. 06, 2001	Drawn by: G. SMITH/Revised: J.Webster	
Revised: July 18, 2002	Geology: G. MAZEROLLE	

# STRATIGRAPHIC LEGEND

QUATERNARY



Sand, gravel, silt, till

## SOUTH-EAST CHURCHILL PROVINCE

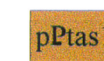
### TORNGAT OROGEN

PALEOPROTEROZOIC

#### Tasluyak



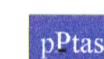
Polyphasic intrusive suite, composed of diorite, tonalite, granodiorite, granite and quartziferous monzodiorite, metamorphosed to amphibolite facies, to granulite and retrogressive granulitic assemblages. This unit includes homogenous leucotonalite to quartz diorite, usually foliated (>80%), with inclusions of diorite and gabbro with plagioclase phenocrysts and stratified mafic gneiss, this rock is cut by numerous felsic and pegmatite veins.



Quartz "mesocrate" diorite, gray to black weathering. Deformed, foliated on outer edge of the Abloviak Shear zone; contains enclaves of porphyritic igneous rocks defined by aggregates of recrystallized plagioclase, and with <50 cm syngenetic xenoliths of fine granulitic diorite; transformed to mylonite in the Abloviak Shear zone.



Mafic gneiss and amphibolite, characterized by compositional units having a centimetre thickness, made of amphibolite with plagioclase phenocrysts and other amphibolite units with a homogenous appearance.



Marble impure calcilicite, consisting of 1-5 m beds of impure marble with diopside-olivine-calcite, and pale green 1-10 m thick diopside calc-silicate beds, locally numerous stratiform and discordant white quartz veins.



Paragneiss and migmatite metasediments, gray to tan weathering, compositionally characterized by red garnets, biotite and abundant leucosome in which sillimanite is rare.

#### BURWELL DOMAIN

PALEOPROTEROZOIC

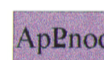
#### Killinek Charnockite Suite



Granodiorite to homogenous tonalite with orthopyroxene (opdaltite to enderbite), tan weathering massive to foliated, equigranular medium grained rock.



Medium grained mafic diorite, having genoblastic texture, often found at the margins of charnockites (pPki12) and forming flakes in paleoproterozoic age paragneisses.



ARCHEAN to PALEOPROTEROZOIC

#### Noodleook Complex

Gray Archean Gneiss of the Nain Province granodiorite to tonalite composition having been affected and deformed during the Torngat Orogen, having undergone retrograde metamorphism generally to upper amphibolite facies in the paleoproterozoic, locally some granulite metamorphic facies mineral assemblages are preserved.

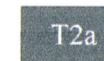
## LITHOLOGY LEGEND

#### BURWELL DOMAIN

PALEOPROTEROZOIC



Fault breccia and cataclastite with associated veins of pseudotachylite.



Mylonite and ultramylonite at amphibolite and greenschist facies.



Fine to medium grained pink to gray granite having a sugary texture.



**DIAMOND DISCOVERIES  
INTERNATIONAL**

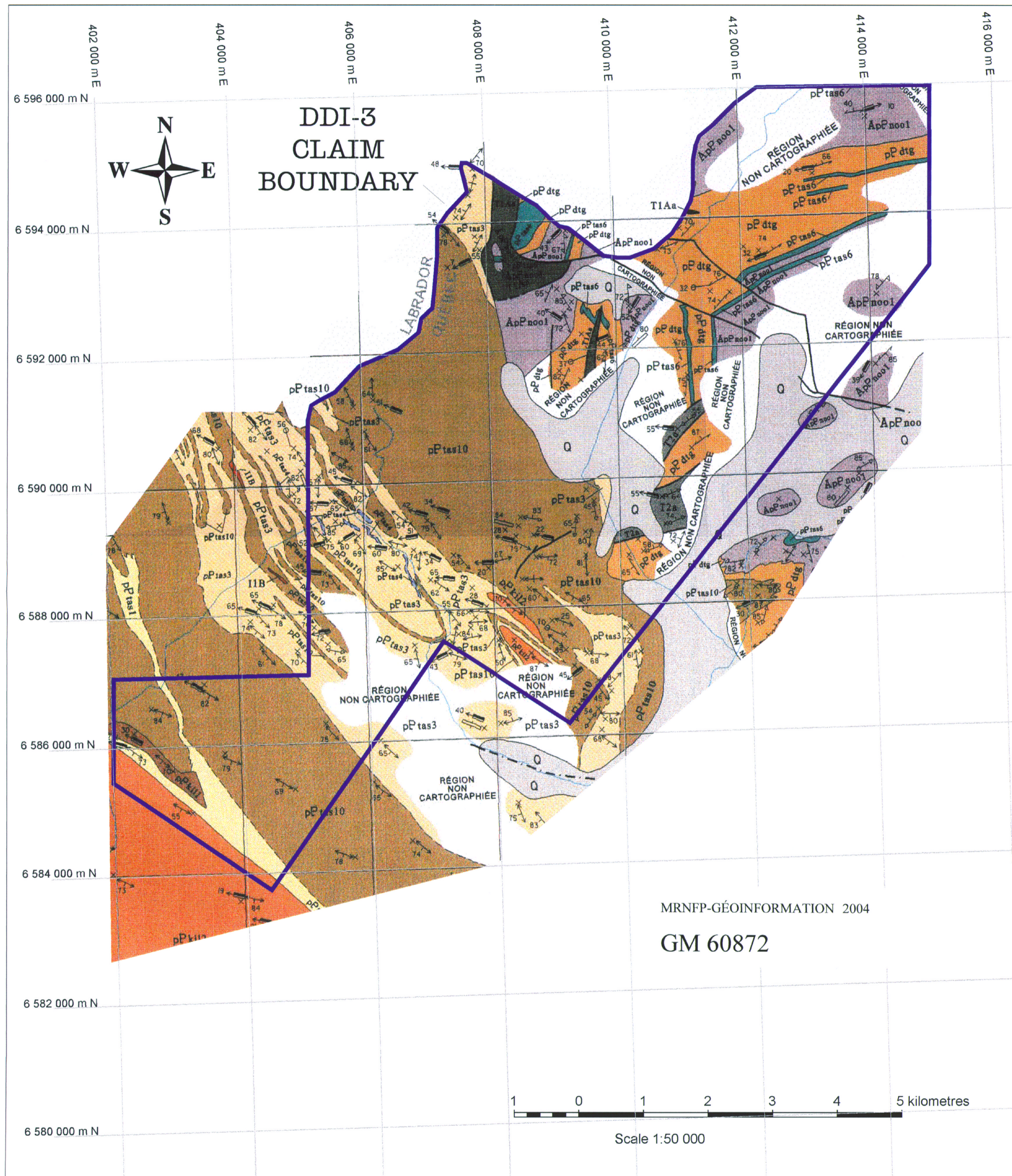
FIG. 6  
**REGIONAL GEOLOGY**  
**DDI-3**

NTS : 24 P 07

Scale: 1:50 000

Date: July 20, 2002

Drawn by: J. Webster



MRNFP-GÉOINFORMATION 2004

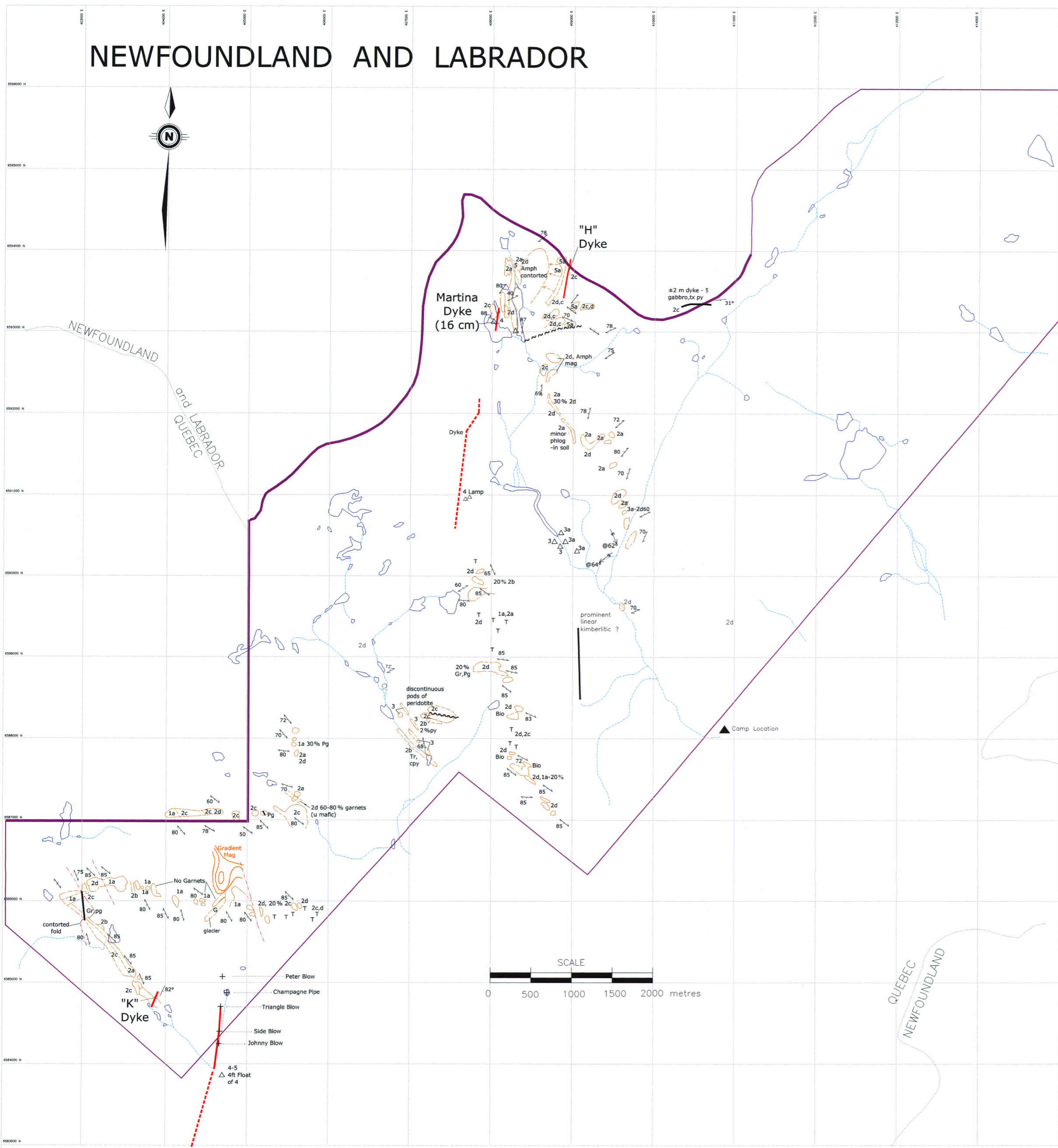
GM 60872

1 0 1 2 3 4 5 kilometres

Scale 1:50 000

Reference : Natural Resources Quebec, 2001 1:50 000  
Geology map sheet 24P07-MONT JAQUES-ROUSSEAU  
SI-24 P07-C3G-01H, Van Kranendonk, M.J.

# NEWFOUNDLAND AND LABRADOR



## LEGEND

- 1 GRANITE / GRANULITE
  - 1a granite (undifferentiated)
  - 1b granodiorite
  - 1c diorite
- 2 GNEISS (garnet bearing)
  - 2a granite gneiss
  - 2b oxidized biotite +/- graphite gneiss
  - 2c quartz gneiss (80% quartz-feldspar)
  - 2d biotite-amphibole gneiss
- 3 PERIDOTITE
  - 3a diabase
- 4 KIMBERLITE COARSE GRAINED
  - 4a kimberlite fine grained
  - 4b tuff <20% fragments
  - 4c breccia >20% fragments
  - 4d potassium altered & welded
- 5 GABBRO
  - 5a gabbro diabase
- Pg — 6 PEGMATITE

## GEOLOGICAL SYMBOLS

- - - Geological contact
- - - Outcrop outline
- - - 4 Interpreted location of Kimberlite / Lamprophyre
- Strike and dip of foliation / bedding
- Plunge & direction of fold axis
- Fault / defined, approximate
- Float
- Blows
- Pipes

MRNFP-GÉOINFORMATION 2004  
GM 60872

## DIAMOND DISCOVERIES INTERNATIONAL



FIG.7  
**PROPERTY GEOLOGY MAP**

Scale: 1:20,000	NTS: 24P/7	<b>DDI-3</b>
Date: Dec. 06, 2001	Drawn by: G. SMITH/Revised: J.Webster	
Revised: July 18, 2002	Geology: G. MAZEROLLE	