

**LEGEND**

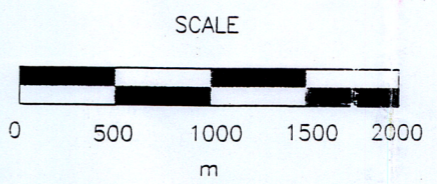
- 1. GRANITE / GRANULITE
  - a) granite (undifferentiated)
  - b) granodiorite
  - c) diorite
- 2. GNEISS (garnet bearing)
  - a) granite gneiss
  - b) oxidized biotite +/- graphite gneiss
  - c) quartz gneiss (80% quartz-feldspar)
  - d) biotite-amphibole gneiss
- 3. PERIDOTITE
- 4. KIMBERLITE-LAMPROPHYRE

Pg PEGMATITE  
 Gossan Zone

- SAMPLE LOCATIONS**
- B-09 Stream Sediment Sample Site (no KIM's)
  - B-09 Stream Sediment Sample Site (with KIM's)
  - X H2RX-014, A-01, KD-01 Kimberlite / lamprophyre rock sample site
  - X 5140 Rock Sample Site
  - ▲ 5100 Float Sample Site (lamprophyre - red)

- GEOLOGICAL SYMBOLS**
- Geological Contact
  - Outcrop Outline
  - ? --- 4 Interpreted location of kimberlite / lamprophyre
  - Magnetometer Survey Line with Anomaly
  - Strike & Dip of Foliation / Bedding
  - Fault
  - Glacial Striae
  - Topographic contours (250 m interval)

MRN-GÉOINFORMATION 2002  
**GM 59485**

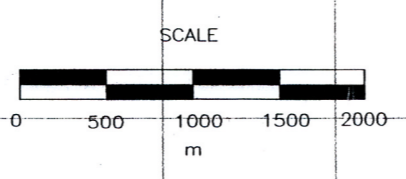
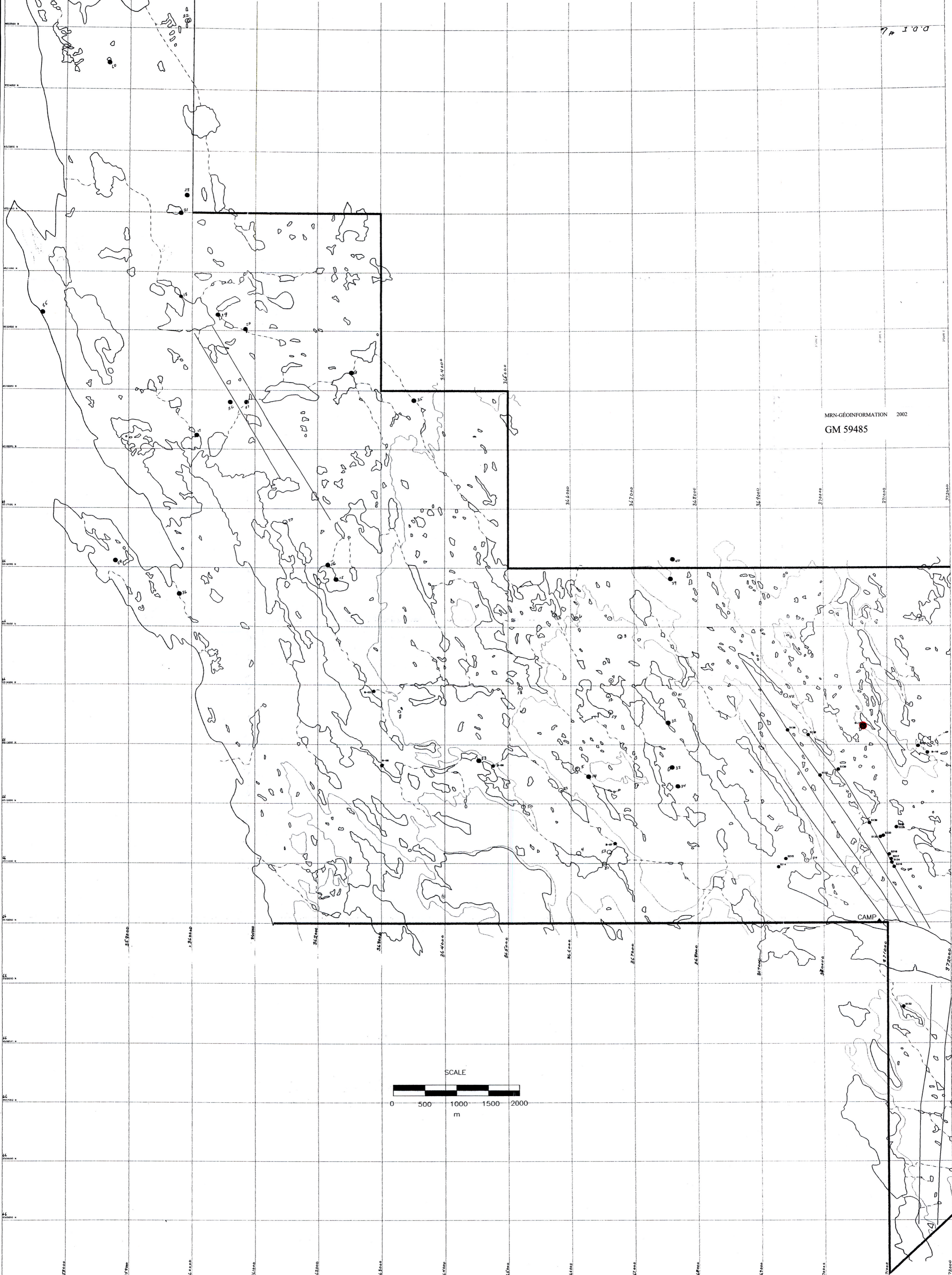


<b>DIAMOND DISCOVERIES INTERNATIONAL</b>	
DDI & PROPERTY GEOLOGY	
<b>TORNGAT PROJECT</b>	
SCALE: 1:20,000	NTS: 24P//
DATE: Jan / 2001	DRAWN BY: G. SCOTT
REVISED:	SHEET "B"



D.P.I. # 7

MRN-GÉOINFORMATION 2002  
GM 59485



C	
Hawkins Sheet A	
1:20,000	
SCALE: 1:4	
DATE:	
REVISED BY:	