

# GM 59150

DIAMOND DRILL LOG AND ASSAY RESULTS, BR01-01, BEAUCHASTEL-ROUYN PROJECT

Documents complémentaires

*Additional Files*



Licence



*License*

Cette première page a été ajoutée  
au document et ne fait pas partie du  
rapport tel que soumis par les auteurs.

Énergie et Ressources  
naturelles

Québec 

MRN-GÉOINFORMATION 2002

GM 59150

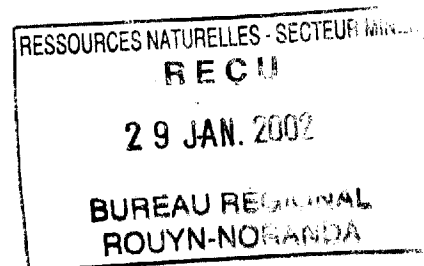
## Globex Mining Enterprises Inc.

Beauchastel-Rouyn Project  
(South Block)

Diamond Drill Log and Assay Results  
BR01-01

Beauchastel Township, Quebec  
RIV, Lot 37  
claim 3730521  
NTS 32D/03

R. V. Zalnieriunas P.Geo  
January 23, 2002  
Rouyn-Noranda, QC



02-029-037

# Globex Mining Enterprises Inc.


## DIAMOND DRILL LOG

PROPERTY: Beauchastel (South Block)  
 HOLE No.: BR01-01  
 Collar Eastings: 635721.00  
 Collar Northings: 5339664.00  
 Collar Elevation: 299.00  
 Grid: NAD '83  
 Beauchastel Tp., RIV Lot 37; CL 3730521

Collar Inclination: -52.00  
 Grid Bearing: 177.00  
 Final Depth: 1033.05 metres  
 DRILLED BY: Bradley Bro's Ltd.  
 NAD Grid 1 deg. E of True N.; NTS 32D/3

Logged by: R. V. Zalnieriunas  
 Date: October 22, 2001  
 Down-hole Survey: Sperry single shot  
 DATES: Oct. 2-22, 2001 CORE: NQ

FROM	TO	LITHOLOGICAL DESCRIPTION	SAMPLE No.	FROM	TO	WIDTH	ASSAYS								
							Au ppb	Au chk	Au g/t	Chk g/t	Ag ppm	Cu ppm	Zn ppm	Pb ppm	Ni ppm
0.00	3.00	<b>Casing (OB)</b> Drillers' report losing water and entering caved and dangerously blocky ground at top of hole; instead of cementing, casing reamed & pushed to 13.0 metres													
		<b>BASEMENT ARCHEAN VOLCANICS</b>													
3.00	9.00	<b>Mafic Volcanic (V7)</b> medium green, graded from coarse grained to fine grained down hole, massive to faintly foliated volcanic flow  moderate green chlorite gnd mass dev'd thro, spotty, weak diss. Fe-carb ground mass, occ. white qtz-carb thds and str's (<5%) dev'd thro,  Foliation at 65 dca,  3.00 - 4.00: cg flow centre, gabbroic, v.wkly foliated at 65dca, grades into: 4.00 - 5.00: mg, mod foliated volc, 5% qcstr & thds grades into, 5.00 - 7.38, fg, massive volc, BROKEN & BLOCKY from 6.0 to 7.0 7.38 - 7.73: GROUND & LOST CORE (LC)													



# Globex Mining Enterprises Inc.

## DIAMOND DRILL LOG

PROPERTY: Beauchastel (South Block)  
HOLE No.: BR01-01

Page 2

FROM	TO	LITHOLOGICAL DESCRIPTION	SAMPLE No.	FROM	TO	WIDTH	ASSAYS							
							Au ppb	Au chk	Au g/t	Chk g/t	Ag ppm	Cu ppm	Zn ppm	Pb ppm
		7.73 - 9.00: fg massive volc to 7.8 (as above), balance of section as medium bedded, fg, green mafic volc breccia / hyalo-breccias and mafic tuffs, moderately BROKEN & BLOCKY thro, bedding at 55dca, bottom contact (BC) at 126 / 36dca knife sharp on 1mm reaction bleach rim in section of blocky core.												
		<b>HURONIAN PROTEROZOIC SEDIMENTS</b>												
9.00	34.22	<b>Cobalt Group Coleman Formation (H1)</b> gritty polymitic, matrix supported conglomerate with occ. minor med beds gritty siltstone or pebbly mudstone minor white qtz / qc strs and threads developed at low angle, subparallel to S0, moderately BLOCKY CORE thro  Matrix: 30%, green-grey, fg, wkly chl'c arkose / ss with trace to weak pervasive Fe-carb matrix cement thro and locally trace to 1% fg diss pyrite  Clasts: 70%, mixed angular to subrounded lithic clasts of felsic to mafic intrusives (mixed granites to diorites)cobbles and boulders and fg grey mudstone pebbles and occ. white quartz and red hematitic chert or jasper shards, clasts generally unsorted and showing occ. weak alignment parallel to bedding at 145dca	16601	31.00	32.00	1.00	8	9		0.6	8	70	16	82
		9.00 - 22.93: conglomerate 22.93- 22.94: pale green sand fault at 15dca												

HOLE No: BR01-01

# Globex Mining Enterprises Inc.

## DIAMOND DRILL LOG

PROPERTY: Beauchastel (South Block)  
 HOLE No.: BR01-01

FROM	TO	LITHOLOGICAL DESCRIPTION	SAMPLE No.	FROM	TO	WIDTH	ASSAYS								
							Au ppb	Au chk	Au g/t	Chk g/t	Ag ppm	Cu ppm	Zn ppm	Pb ppm	Ni ppm
		22.94 - 34.22: conglomerate, wk clast alignment at 145dca, xcutting talcose joint dev'd at 170dca perpendicular to S0 at 26.40; irreg wh qstr running sptb at 165dca from 27.0 to 27.4, BC at 120dca on undulating scour surface													
34.22	61.32	<b>Cobalt Group Mudstones (H4) and Conglomerates (H1)</b> gritty, grey pebbly siltstones, mudstones and occ. congl. (similar to above), medium to thickly bedded, bedding contacts at 130 to 155dca generally scoured, tops up hole moderately BLOCKY CORE thro  Weak perv. Fe-carb gnd mass thro,	11801	58.00	59.00	1.00	37	33							
		41.36 - 41.55: grey bleached carb altered band or cobble with +15% fg py replacement str's dev'd thro ptb at 145dca													
		43.0 - 45.83: grey, graded massive paraconglomerate bed, top section as pebbly mudstone grading downhole to a polymictic conglomerate base, BC at 140dca													
		50.3 - 51.0: irreg, 30% grey qtz & pale pink carb (no fizz) str dev parallel to core axis with mod cg pink carb spotting continuing downhole to 52.8,													
		53.35 - 59.0: mod to strong fg dissem leucoxene dev'd preferentially in mudstone beds thro, bedding at 130dca													

# Globex Mining Enterprises Inc.

## DIAMOND DRILL LOG

PROPERTY: Beauchastel (South Block)  
 HOLE No.: BR01-01

FROM	TO	LITHOLOGICAL DESCRIPTION	SAMPLE No.	FROM	TO	WIDTH	ASSAYS								
							Au ppb	Au chk	Au g/t	Chk g/t	Ag ppm	Cu ppm	Zn ppm	Pb ppm	Ni ppm
		58.0 - 59.0: +2% chalcopyrite dev'd as f-vog anhedral angular blebs associated with xcutting low angle qthds and a qvlt at 20dca in congl.													
		61.32: basal contact at about 90dca of 5.2m thick cong bed - sharp, undulating angular unconformity													
		<b>BASEMENT ARCHEAN VOLCANICS - BLAKE RIVER?</b>													
61.32	76.00	<b>Pyrite Stringered Mafic Metavolcanics (V7carb SS py)</b>	11802	64.80	65.25	0.45	20								
		medium green-grey, fine grained, moderately sheared and altered mafic volcanics, thickly laminated to massive looking; moderately BLOCKY CORE thro.	11803	69.80	70.20	0.40	47								
			11804	71.10	71.30	0.20	21								
			11805	72.60	73.00	0.40	17								
			11806	73.00	74.00	1.00	4								
		Alteration as mod to strong perv. green chlorite, i/c with occ med to thin bands of pale yellow to buff sericite dev'd ptf (parallel to foliation) and mod. to weak perv. Fe-carbonate gnd mass., occ p.grey talcose slips dev'd on foliation parting planes thro.	11807	74.00	75.00	1.00	15								
			11808	75.00	76.00	1.00	15								
		clear to milky white qtz and qtz-carb (dolomite?) strs, thds and occ vlts dev'd gen pts at 45dca with broad bands of cg diss qc spotting also developed thro.													
		occ. thin (<20cm) beds of med grey interflow sedls noted oriented ptf at 45-50dca													
		64.8 - 65.2: 20% mg py as SMS thds ptf & xcutting foln of 62dca													

# Globex Mining Enterprises Inc.

## DIAMOND DRILL LOG

PROPERTY: Beauchastel (South Block)  
 HOLE No.: BR01-01

FROM	TO	LITHOLOGICAL DESCRIPTION	SAMPLE No.	FROM	TO	WIDTH	ASSAYS										
							Au ppb	Au chk	Au g/t	Chk g/t	Ag ppm	Cu ppm	Zn ppm	Pb ppm	Ni ppm		
		69.0 - 69.8: very BROKEN & Blocky Core															
		69.8 - 70.2: 3% f&mg diss py str thds assoc. with augened qstrs ptf at 41dca- well sheared															
		70.1 - 71.3: 2% py as 5cm diss str band at 71.1 at 42dca															
		72.6 - 73.0: 3% diss py strs thro															
		73.0 - 74.0: 1% py as occ 0.5cm diss strings ptf															
		74.0 - 75.0: 3% py as occ minor diss str / blebs															
		75.0 - 76.0: tr diss py and minor strs; grades into:															
76.00	95.20	<b>Sheared Mafic Volcanic (V7)</b> med grey-green, fg, thickly laminated and moderately sheared mafic volcanics (similar to above)	16602	81.00	83.00	2.00	14					0.8	26	85	17	77	
		moderately chloritic, occ. mod weak sericite bands, trace spotty Fe-carb gnd mass (note: section looks well carbonitized but shows no reaction to acid or staining therefore probably dolomitic) with 5-10% irreg white to pale pink qtz-carb thds, strs and irreg. masses															
		schistosity at 80-65dca alternating rapidly thro															
		92.64 - 92.72: white, cg, bit vuggy qtz vein cross cutting cleavage at 33dca with minor pale yellow talc															
		95.0: grades at 70dca into:															

# Globex Mining Enterprises Inc.

## DIAMOND DRILL LOG

PROPERTY: Beauchastel (South Block)  
 HOLE No.: BR01-01

FROM	TO	LITHOLOGICAL DESCRIPTION	SAMPLE No.	FROM	TO	WIDTH	ASSAYS								
							Au ppb	Au chk	Au g/t	Chk g/t	Ag ppm	Cu ppm	Zn ppm	Pb ppm	Ni ppm
95.20	108.33	<b>Qtz Veined Mafic Volcanics (V7 qv)</b>	11809	95.20	96.00	0.80	62								
		med green, moderately sheared mafic volcanics	11810	96.00	97.00	1.00	264								
		(as above), bit BLOCKY thro,	11811	97.00	98.00	1.00	104								
			11812	98.00	99.22	1.22	151								
		moderate to strong FE-carb gnd mass dev'd thro,	11813	99.22	100.30	1.08	169	163							
		mod green chlorite gnd mass thro,	11814	100.30	100.90	0.60	17								
			11815	100.90	102.00	1.10	93								
		stringered and veined by white to glassy clear cg qtz	11816	102.00	103.00	1.00	150								
		with variable minor sulfides on margins as follows:	11817	103.00	104.00	1.00	23								
			11818	104.00	105.00	1.00	21	26							
		95.20 - 96.00: 15% white or pale pink qc strs, (in part	11819	105.00	106.30	1.30	66								
		vuggy) thds & wisps and minor disseminated lenses,	11820	106.30	106.70	0.40	303								
		veining dev'd gen ptf at 75dca, minor wispy diss to SMS	11821	106.70	107.80	1.10	41								
		pyrite strs & thds also developed ptf as brown vfg	11822	107.80	108.33	0.53	129								
		replacement masses or brassy f-mg diss grains defining													
		sub parallel threads, py at 3% total, trace yellow													
		sericite lam's													
		96.00 - 97.00: (as above) 15-20% white qtz strs, 4% vfg py str													
		minor seric slips, qtz strs locally contorted,													
		overall stringering at 65dca													
		97.00 - 98.00: (similar to above) 15% qstrs ptf, thickly													
		lam'd volc, in part silicified & med banded ptf at													
		55-75dca, minor sericite lam ptf, trace-1% mg diss													
		py a 1-2cm diss bands ptf.													
		98.00 - 99.22: (similar to above) 20% qtz veining & str's,													
		mainly as 7cm xcutting veinlet at 152dca, but, str &													
		thds also ptf at 45dca and as irreg lenses,													
		pyrite = 1-2% as minor str thds sptf, occ seric.													
		99.22 - 100.3: quartz vein (qv), 97% wh cg qtz, minor white													
		calcite (cc) hairs dev on fractures, coarse black													



# Globex Mining Enterprises Inc.

## DIAMOND DRILL LOG

PROPERTY: Beauchastel (South Block)  
 HOLE No.: BR01-01

FROM	TO	LITHOLOGICAL DESCRIPTION	SAMPLE No.	ASSAYS													
				FROM	TO	WIDTH	Au ppb	Au chk	Au g/t	Chk g/t	Ag ppm	Cu ppm	Zn ppm	Pb ppm	Ni ppm		
		diss tourmaline (<1%) at top contact (TC), and minor irreg green chl schist wisps and bands, no significant mineralization noted, TC at stepped and very angular (averages 30dca?), BC 40dca on blocky & broken core															
100.3	- 100.9:	60% cg wh qtz stockwork veining, <2% wh to v.pale pink carb thds net veining chl'd country rock, trace py															
100.9	- 102.0:	med-pale green, bleached looking mafic volc no sig cc / Fe-carb, <15% qthds & occ str ptf at 65dca 1% py as occ diss str, grades into:															
102.0	- 103.0:	thickly lam'd, pale & med green banded mafic volc, bleached as above but with spotty mod Fe-carb gnd mass, 5% yellow seric lam's dev ptf at 75dca, 8% glassy grey qstr & qthds ptf, & 2% py thds (possibly weakly sheared pillow breccia?)															
103.0	- 104.0:	(similar to above), thick lam's of welded mafic tuffs i/c with thick bands of massive mafic volc all contacts ptf at 75dca, <15% wh qtz sting & thds mainly at base of section, minor seric lam's, trace minor py as diss rare thds, grades into:															
104.0	- 105.0:	med green, mod chl'c mafic volc, fg, massive thickly banded, wkly fol'd, mod bx'd & sealed by either white qtz or white & pink qtz-card str & thds trace-1% fg py as replacement masses															
105.0	- 106.3:	(as above) mod Fe-carb gnd mass, 5% pink carb str, 10% wh qthds & occ str, 1-2% f&mg diss py thro, minor 1/2cm chl'c fault gouge at 105.55 at 40dca xcutting fol'n of 75dca; grades into:															
106.3	- 106.7:	tuffaceous looking volc, minor qthds, tr py															

# Globex Mining Enterprises Inc.

## DIAMOND DRILL LOG

PROPERTY: Beauchastel (South Block)

HOLE No.: BR01-01

Page 8

FROM	TO	LITHOLOGICAL DESCRIPTION	SAMPLE No.	FROM	TO	WIDTH	ASSAYS									
							Au ppb	Au chk	Au g/t	Chk g/t	Ag ppm	Cu ppm	Zn ppm	Pb ppm	Ni ppm	
		grades into:														
		106.7 - 107.8: p.grey sil'n band / silic'd m-cg hyaloclastite bed, 1-2% fg replacement py, TC=80dca, BC=50dca														
		107.8 - 108.33: med green, fg massive mafic volc, mod chl mod - wk Fe-carb gnd mass, minor white carb & qc thds and occ "WAC" (white carbonate alteration spots) de'd as diss bands, tr py, < 3% qtz, grades into:														
108.33	130.50	<b>Mafic Volcanic (V7)</b> green to occ pale green (iron poor?) massive, fg, mafic occasionally weakly foliated at 65dca, well jointed and mod. BLOCKY ptf, thickly bedded flows, poss pillowed? minor white (<2%) cc str thds and diss amygdules thro, occ minor thin interflow hyaloclastite beds,  trace m-cg diss anhedral py  mod to strong calcite gnd mass & mod chl  115.50 - 116.00: +25% brown, vfg pyrite dev as MS to SMS str & replacement lam's ptf at 65dca  116.65: irreg 1/2cm xcutting py str thd at 22dca  130.5: grades into:	11823	115.50	116.00	0.50	44									
130.50	141.38	<b>Bleached Mafic Volcanics (V7bz +/-SSpy)</b> thickly colour banded pale grey, buff and med grey, massive to faintly foliated, med to thickly bedded mafic volc flows i/c with thin beds hyalotuff med to darker grey in	11824	130.50	131.50	1.00	31									

# Globex Mining Enterprises Inc.

## DIAMOND DRILL LOG

PROPERTY: Beauchastel (South Block)  
 HOLE No.: BR01-01

FROM	TO	LITHOLOGICAL DESCRIPTION	SAMPLE No.	FROM	TO	WIDTH	ASSAYS									
							Au ppb	Au chk	Au g/t	Chk g/t	Ag ppm	Cu ppm	Zn ppm	Pb ppm	Ni ppm	
		colour possibly due to trace graphite?,														
		occ minor bands of mg wh cc amygdules dev'd gen ptf at55dca														
		altn: mod Fe-carb and mod-strong cc carbonate gnd mass occ minor qtz-seric altn band ptf														
		130.50 - 131.50: 7% m&cg py str thds dev gen ptf at 75dca 20% white vuggy qtz-carb strs also gen ptf & occ xcutting														
		131.50 - 132.50: 5% wh vuggy qcstrs decreasing downhole, tr py														
		132.50 - 141.38: tr occ anhedral f-cg py patches & rare thds														
		141.38: BC at 71dca ptf														
141.38	149.43	<b>Qtz Stringered Massive Mafic Volcanic (V7m 15% qtz)</b> med green, fg, massive, mod chl'c, mod to strong fg grey diss leucoxene dev'd thro, mod to v.wk Fe-carb gnd mass, trace py, 15-20% white irreg qtz str stockwork thro														
		BC at 80dca on vfg chilled contact														
149.43	166.60	<b>Massive Mafic Volcanic (V7)</b> med to dark green, fg, massive to mod. foliated, thick to thinly bedded at 60dca, rare thin beds of i/c hyalotuff														
		mod chl, mod calcite gnd mass thro, minor 5% white xcutting irreg carb & occ qc thds & knots														

# Globex Mining Enterprises Inc.

## DIAMOND DRILL LOG

PROPERTY: Beauchastel (South Block)  
HOLE No.: BR01-01

FROM	TO	LITHOLOGICAL DESCRIPTION	SAMPLE No.	FROM	TO	WIDTH	ASSAYS									
							Au ppb	Au chk	Au g/t	Chk g/t	Ag ppm	Cu ppm	Zn ppm	Pb ppm	Ni ppm	
		159.81: 1cm chl'c fault gouge at 57dca														
		159.9 - 160.0: fault gouge - BROKEN thro														
		166.10 - 166.60: 50% vuggy pink rhodochrosite +/-cc cstrs & cvs at 25 - 60dca; BC at 65dca on cv base														
166.60	171.67	<b>Bleached Mafic Volcanic (V7 bz)</b> pale green, fg, massive mafic metavolc, mod. fractured and sealed with <5% wh &/ white to pale pink carb-qtz str & thds, minor bed of flow top breccia,  weak per Fe-carb gnd mass, tr sericite  BLOCKY CORE  grades into:														
171.67	180.75	<b>Sericitic Mafic Volcanic (V7 seric)</b> colour banded pale & med green grey and med greenish yellow, thickly laminated, mod sheared and foliated and moderately altered volcanic  no significant carb gndmass noted (no stain & no acid fizz reaction), weak green chl as alternating bands i/c with mod. bands of seric dev pts at 70-80dca, minor talc dev'd on parting planes as well as mod. diss thick bands of fg leucoxene  BLOCKY CORE occ. BROKEN	11825	171.67	173.00	1.33	1									
			11826	173.00	174.50	1.50	39									
			11827	174.50	176.00	1.50	58									
			11828	176.00	177.50	1.50	6									
			11829	177.50	179.00	1.50	21									
			11830	179.00	180.00	1.00	6	8								
			11831	180.00	180.75	0.75	457									

# Globex Mining Enterprises Inc.

## DIAMOND DRILL LOG

PROPERTY: Beauchastel (South Block)  
 HOLE No.: BR01-01

FROM	TO	LITHOLOGICAL DESCRIPTION	SAMPLE No.	FROM	TO	WIDTH	ASSAYS								
							Au ppb	Au chk	Au g/t	Chk g/t	Ag ppm	Cu ppm	Zn ppm	Pb ppm	Ni ppm
		minor grey qtz +/-carb strrs dev'd pts and trace to locally 2% f&mg sulfides as diss grains or occ. str thds pts													
		171.67 - 173.00: tr py, schty at 70dca													
		173.00 - 174.50: 25% grey qstrs, tr fg py, mod seric all pts at 75dca													
		174.50 - 176.00: <15% qcstrs & thds, no sig py, mod chl, wk seric													
		176.00 - 177.50: <7% qcstrs & thds, no sig min., mod leuc. mod-wk chl, wk seric													
		177.50 - 179.00: 8% qthds in part augened, tr mg diss py, seric increasing down hole													
		179.00 - 180.00: 10% qstrs pts at 66dca, few spks py, th. lam & banded seric & silic volc													
		180.00 - 180.75: (as above) grades at 70dca into:													
180.75	191.10	<b>Bleached &amp; Carbonitized Mafic Volcanic (v7p bz, qvs)</b>	11832	180.75	181.45	0.70	31								
		pale greenish-brown to grey & buff, fg, med beds massive	11833	181.45	181.93	0.48	939								
		occ thermally fractured & qthd sealed, locally amygd. mafic	11834	181.93	183.00	1.07	275								
		volcanic i/c with thin beds med grey silicified hyalotuffs and fg breccias (pillowed sequence)	11835	183.00	184.00	1.00	19								
		moderately BLOCKY core													
		mod Fe-carb gndmass thro, minor grey qthds dev perp, to beds minor aphanitic dk grey strrs dev'd on pillow selvages, quartz threads and haloing fractures													
		minor quartz veining in top of section as follows:													

# Globex Mining Enterprises Inc.

## DIAMOND DRILL LOG

PROPERTY: Beauchastel (South Block)

HOLE No.: BR01-01

Page 12

FROM	TO	LITHOLOGICAL DESCRIPTION	SAMPLE No.	FROM	TO	WIDTH	ASSAYS								
							Au ppb	Au chk	Au g/t	Chk g/t	Ag ppm	Cu ppm	Zn ppm	Pb ppm	Ni ppm
		180.75 - 181.45: pale re-xtalized bleach band (carb only?), minor brown seric on fracture planes, 1% m-cg diss py BC irreg at 40dca													
		181.45 - 181.93: 95% qtz white & grey, v. coarse breccia vein with minor carb and 5% irreg strcs of fg clay alt'd country rock, BC irreg at 120dca													
		181.93 - 183.00: banded, buff-grey, fg bleached volc, 10% white bull qtz as irreg xcutting str at 50dca at 182.6, 3% diss m&cg py thro, grades into:													
		183.00 - 184.00: fg, pale olive-grey, med. bedded pillowed & pillow bx, tr fg diss py ass'd with minor qtz dev'd preferentially in hyaloclastites													
		191.1: grades at 70dca into next unit at base of tuff bed													
191.00	204.5	<b>Pillowed Mafic Volcanics (V7p)</b> med green, fg, massive to faintly foliated, thick to med partially fractured pillow selvages and occ. i/c hyaloclastites bedded at 90 to 75dca  <10% white irreg carb strcs, thds and occ cg elip. amygdule bands, mod to strong calcite (cc) gnd mass thro, moderate green chl thro  grades at 62dca ptf into:													
204.5	208.50	<b>Pillowed Mafic Volcanics (V7p)</b> med green-grey, (as above)	16603	206.00	207.00	1.00	4			0.8	99	58	20	63	

# Globex Mining Enterprises Inc.

## DIAMOND DRILL LOG

PROPERTY: Beauchastel (South Block)

HOLE No.: BR01-01

Page 13

FROM	TO	LITHOLOGICAL DESCRIPTION	SAMPLE No.	FROM	TO	WIDTH	ASSAYS									
							Au ppb	Au chk	Au g/t	Chk g/t	Ag ppm	Cu ppm	Zn ppm	Pb ppm	Ni ppm	
		mod Fe-carb gnd mass thro														
		BC at 72dca														
208.50	219.85	<b>Sericite Banded Re-worked Breccia (V7pb k, tr py)</b>	11836	208.50	209.50	1.00	17									
		grey & bright yellow-green banded, c-mg, thickly lam'd,	11837	209.50	210.30	0.80	10									
		thick bed of graded and re-worked pillow breccia, mod.	11838	210.30	211.80	1.50	58									
		re-xtalized, carb'd and partially silic'd?;	11839	211.80	212.20	0.40	13									
		clasts generally elliptical, sub-round with occ. rare	11840	212.20	213.30	1.10	17									
		well rounded sedimentary exotics.														
		sequence grading finer and overall size and percentage of														
		clasts decreasing down hole; (STRAT TOPS FACE DOWNHOLE)														
		Mod. Fe-carb gndmass thro, 1/2 to 3cm thick seric banding														
		(30%) thro, trace to locally 5% f-mg diss pyrite														
		208.50 - 209.50: 2% cg diss py thro														
		209.50 - 210.30: 75% qtz as cg grey 1/2 moon lens or														
		folded vein, TC at 10dca, BC at 160dca, <1% mg diss														
		pyrite dev'd at margins to qtz														
		210.30 - 211.80: tr -1% fg diss py, fol'n at 80dca														
		211.80 - 212.20: 95% qtz as irreg 32cm grey mottled qv														
		TC & BC irreg xcutting at 15dca perp to fol'n, tr py														
		212.20 - 213.30: no sig min, banding at 75dca														
		Grades into:														

# Globex Mining Enterprises Inc.

## DIAMOND DRILL LOG

PROPERTY: Beauchastel (South Block)  
 HOLE No.: BR01-01

FROM	TO	LITHOLOGICAL DESCRIPTION	SAMPLE No.	FROM	TO	WIDTH	ASSAYS						
							Au ppb	Au chk	Au g/t	Chk g/t	Ag ppm	Cu ppm	Zn ppm
<b>CADILLAC GROUP SEDIMENTS?</b>													
219.85	225.93	<p><b>Wkly Sericitic Siltstones (S4 k)</b>                      grey, fg, med to thinly bedded siltstone, faintly fol'd parallel to bedding (ptb), i/c with minor pale grey thinly laminated cherty beds. Rhythmic graded bedding is finer downhole</p> <p>Mod perv. Fe-carb gnd mass thro, minor (&lt;10%) yellow -green seric altn bands dev'd thro (as above) but decreasing downhole</p> <p>Bedding core angles flip and mark fold nose, axis occupied by 15cm grey qv, tour dev'd at TC and minor m-cg asp at BC</p> <p>220.50: 12cm thick, thinly lam'd cherty mudstone bed, beds bit crenulated, S0 at 35dca</p> <p>221.6: S0 at 115dca</p> <p>221.79 - 222.10: 50% grey qtz as 13cm qv at 95dca, 1% cg tour, 1% asp</p> <p>223.0: bedding at 85dca</p> <p>225.93: contact on bedding at 75dca</p>	11841	221.79	222.10	0.31	91						
225.93	240.11	<p><b>Wkly Mineralized Mudstone (S4 asp, qv's)</b>                      grey, fg, med bedded siltstones (similar to above) i/c with 30% pale grey, thin beds of v.wkly sericitic</p>	11842	227.00	228.40	1.40	12	9					
			11843	228.40	229.40	1.00	8						
			11844	229.40	230.13	0.73	6						



# Globex Mining Enterprises Inc.

## DIAMOND DRILL LOG

PROPERTY: Beauchastel (South Block)

HOLE No.: BR01-01

Page 15

FROM	TO	LITHOLOGICAL DESCRIPTION	SAMPLE No.	FROM	TO	WIDTH	ASSAYS								
							Au ppb	Au chk	Au g/t	Chk g/t	Ag ppm	Cu ppm	Zn ppm	Pb ppm	Ni ppm
		mudstone.	11845	230.13	230.90	0.77	4								
			11846	230.90	231.35	0.45	8	9							
		Mod to weak perv. Fe-carb gndmass thro	11847	231.35	231.95	0.60	16								
			11848	231.95	232.50	0.55	8								
		Mineralized by mottled grey, cg, bedding parallel qtz veins & strs and disseminated f-mg asp as follows:	11849	232.50	234.00	1.50	4								
			11850	234.00	235.00	1.00	7								
			11851	235.00	236.00	1.00	8								
		225.93 - 227.00: no sig min'	11852	236.00	237.20	1.20	4								
		227.00 - 228.40: tr diss py	11853	237.20	238.20	1.00	4								
		228.40 - 229.40: 5% asp, 1% py, diss, m&fg	11854	238.20	239.25	1.05	3								
		229.40 - 230.13: 3% asp dissem, mg, CA=75	11855	239.25	240.11	0.86	3								
		230.13 - 230.90: 75% med grey qtz as BP vein / 56cm 15% internal chl'd wall rock strs & blocks, 1% asp mg dev at T&BC's													
		230.90 - 231.35: p.grey, fg massive sil'd? sed, 3% fg asp													
		231.35 - 231.95: 90% mottled grey qtz as irreg vein 1% fg asp at lower contact													
		231.95 - 232.50: 50% sil'd sed in top half, 4% f&mg diss asp thro, bedding at 55dca													
		232.50 - 234.00: tr asp, foln & banding at 75dca													
		24.00 - 235.00: 35% grey qstrs & qv bp at 55 & 70dca, tr asp													
		235.00 - 236.00: 40% grey contorted qstr bp & xcutting thro, 2% fg diss asp													
		236.00 - 237.20: 25% qtz (as above) 1% py tr asp, chl and seric altn increasing downhole													
		237.20 - 238.20: 5% qcstr, tr mg diss py													
		238.20 - 239.25: 3% qstr& qthds, 3% f-cg diss asp, mod chl gndmass, foln at 58dca													
		239.25 - 240.11: 60% qv's & qstrs, contorted subptf													

# Globex Mining Enterprises Inc.

## DIAMOND DRILL LOG

PROPERTY: Beauchastel (South Block)  
HOLE No.: BR01-01

Page 16

FROM	TO	LITHOLOGICAL DESCRIPTION	SAMPLE No.	FROM	TO	WIDTH	ASSAYS									
							Au ppb	Au chk	Au g/t	Chk g/t	Ag ppm	Cu ppm	Zn ppm	Pb ppm	Ni ppm	
		i/c with chl'd wall rock; Grades into:														
240.11	247.44	<b>Sheared and Chloritized Sediments (S chl tr asp)</b>	11856	240.11	241.40	1.29	3									
		banded dark & pale olive green, fg, thinly laminated and schistose sediments, mod chloritic, weak seric banding mod. Fe-carb gnd mass. Minor glassy pale grey qstr's dev'd in top section, occ minor xcutting pink rhodochrosite str, wkly talcose on parting planes	11857	241.40	242.50	1.10	17									
		moderately BLOCKY thro as "poker chip" core, schty CA's from 40dca to 80-90dca, locally kinked														
		trace mg disseminated asp grains thro														
		240.11 - 241.40: 3% qstrs														
		241.40 - 242.50: 25% qstrs, tr sulf														
		247.44 grades into:														
247.44	263.00	<b>Mudstone (S4 qv, py)</b>	11858	248.00	249.30	1.30	6	9								
		med grey to greenish-grey, well foliated, weakly sheared i/c thick to thinly bedded siltstones and mudstones	11859	249.30	250.30	1.00	7									
			11860	250.30	251.00	0.70	7									
			11861	251.00	252.00	1.00	7									
		tr - <1% vfg to occ fg diss py, tr asp diss thro, minor	11862	252.00	253.00	1.00	18									
		qtz str / veinlets dev'd thro parallel to schistosity	11864	254.25	254.79	0.54	7									
		or xcutting	11863	256.42	257.05	0.63	5									
		mod to weak perv. Fe-carb gnd mass, chl gnd mass decreasing downhole; occ green-yellow seric bands ptf gen in vicinity of qvs, trace talc dev on parting planes (greasy feel)														

# Globex Mining Enterprises Inc.

## DIAMOND DRILL LOG

PROPERTY: Beauchastel (South Block)  
HOLE No.: BR01-01

Page 17

		ASSAYS													
FROM	TO	LITHOLOGICAL DESCRIPTION	SAMPLE No.	FROM	TO	WIDTH	Au ppb	Au chk	Au g/t	Chk g/t	Ag ppm	Cu ppm	Zn ppm	Pb ppm	Ni ppm
		248.00 - 249.30: sheared tb mudstone, tr fg py, schty at 80dca													
		249.30 - 250.30: 40% grey mottled qstrs 1/2 to 5cm dev'd spts, tr py, sericitic walls													
		250.30 - 251.00: 15% qstrs, 1% mg diss py, wkly chl'c BC on 1/4cm fault gouge xcutting at 28dca													
		251.00 - 252.00: tr qtz as thds, 1% diss py													
		252.00 - 253.00: 1-2% f-vvfg diss sulf													
		253.00 - 256.45: tr py, <3% wh & p.pink qc thds (irreg) schty/foln at 78dca													
		256.45 - 257.03: 98% white & grey mottled qtz vein, 2% p.pink irreg carb, 5% chl or seric schist wall rock inclusions; TC & BC approx 65dca pts													
		257.03 - 263.00: m-tb mudstones, <1% qstr, tr-1% diss sulf chl decreasing down hole, grades into:													
263.00	395.55	<b>Mudstones (S4)</b>	16604	314.00	315.00	1.00	4				0.1	39	91	35	83
		grey, fg, med bedded siltstones i/c with grey vfg thinly bedded claystones (fine grained turbidites) weakly sheared thro	11865	323.75	324.27	0.52	43								
			11866	374.00	374.70	0.70	4								
			11867	381.00	382.00	1.00	5								
			11868	382.00	382.20	0.20	6								
		siltstones appear to be massive, minor refracted cleavage patterns developed in claystones at 45dca relative to beddings of 80-75dca. Section is moderately to locally strongly BLOCKY with jts & partings generally ptb	11869	382.20	383.00	0.80	9								
			11870	383.00	384.00	1.00	7	6							
			11871	384.00	384.50	0.50	4								
			11872	384.50	386.00	1.50	5								
			11873	386.00	387.50	1.50	6								
		trace to <3% white & occ p.pink cthds & qcthds dev'd xcutting and ptb; tr - locally 1% f-mg diss anhedral py	11874	387.50	389.00	1.50	8								
		with open fine, flamed vfg pyrite box or cross structures	11875	389.00	390.50	1.50	4	5							
		developed as occ. replacement features on joints or fractures	11876	390.50	392.00	1.50	12								
			11877	392.00	393.20	1.20	6								

# Globex Mining Enterprises Inc.

## DIAMOND DRILL LOG

PROPERTY: Beauchastel (South Block)  
 HOLE No.: BR01-01

---

FROM	TO	LITHOLOGICAL DESCRIPTION	SAMPLE No.	FROM	TO	WIDTH	ASSAYS									
							Au ppb	Au chk	Au g/t	Chk g/t	Ag ppm	Cu ppm	Zn ppm	Pb ppm	Ni ppm	
		downhole below 323m	11878	393.20	394.20	1.00	7									
		mod to strong Fe-carb gnd mass, weak chl'n, minor talc as expressed as greasy feel to parting planes	11879	394.20	394.65	0.45	7									
		11880	394.65	395.55	0.90	6										
		254.25 - 254.79: med & dk grey qtz vein, mod bx'd & coarsely ribboned, <10% sil'd wall rock & seric schist thds, bedding parallel at 45dca?														
		313.0: foln at 78dca														
		323.75 - 324.27: 50% qtz as qstr & sil'd wall rock 3% py as diss grains & thds on frac (replacement)														
		349.0 - 350.45: +65% qtz as strs thro, V. BLOCKY & BROKEN														
		354.8: bedding at 74dca														
		359.13 - 359.19: qst/2cm filling fault gouge, fault at 80dca xcutting fol'n of 60dca														
		360.0: core angles average 90dca but flip flop 10deg on either side (ie 80 to 100dca)														
		370.0 -372.0: BROKEN CORE														
		374.10 - 374.70: 95% qtz as 50cm massive grey qv with talcose chl-seric schist walls, vein at 65dca														
		376.8 approx.: 2cm fault gouge at 80dca haloed by 70cm														

# Globex Mining Enterprises Inc.

## DIAMOND DRILL LOG

PROPERTY: Beauchastel (South Block)

HOLE No.: BR01-01

Page 19

		ASSAYS													
FROM	TO	LITHOLOGICAL DESCRIPTION	SAMPLE No.	FROM	TO	WIDTH	Au ppb	Au chk	Au g/t	Chk g/t	Ag ppm	Cu ppm	Zn ppm	Pb ppm	Ni ppm
		of BROKEN & BLOCKY core													
		381.00 - 382.00: mb siltstone & i/c tb chl /seric claystone trace mg diss py, bedding at 75dca													
		382.00 - 382.20: 8cm qstr at 40dca in chl'd sed, tr py													
		382.20 - 383.00: 1½ py, diss , minor sericitic alt'd claystone													
		383.00 - 384.00: 2½ qstr (flat?) tr py diss													
		384.00 - 384.50: 20% qtz as 11cm bx vein xcutting at about 90dca at 384.25													
		384.50 - 386.00: massive siltstone bed, tr cg diss py													
		386.00 - 387.5: 9cm qvlt flat xcutting at 140dca tb clayst. at 63dca, trace m-cg py													
		387.50 - 389.00: turbidites, tr m-cg diss py													
		389.00 - 390.50: 1½ m-cg py, 1% qtz mainly as qstr dev'd near base at 20dca ass'd with cg tour, BC on 1cm fault gouge at 25dca													
		390.50 - 392.00: tr qtz as few qcths, tr py													
		392.00 - 393.20: tr qtz, tr py													
		393.20 - 394.20: 6% qtz as qstr at 90dca, tr py													
		394.20 - 394.65: 80% qtz, tr py as 27cm bx'd qv at 90dca with 2% cp f-mg, diss.													
		394.65 - 395.55: 10% qtz, 1-2% py as contorted qsts dev'd in siltstone, py mg, diss wispy replacement type BC at 100dca													
395.55	402.58	<b>Talcose Mudstones (S41)</b>	11881	395.55	396.00	0.45									
		med-dark grey and greenish-grey, fg, thinly bedded, weakly	11882	396.00	396.40	0.40									
		sheared / foliated parallel to bedding (ptb) at top of	11883	396.40	397.40	1.00									
		section becoming massive looking thinly bedded and well	11884	397.40	398.40	1.00									

HOLE No: BR01-01

# Globex Mining Enterprises Inc.

## DIAMOND DRILL LOG

PROPERTY: Beauchastel (South Block)  
HOLE No.: BR01-01

Page 20

FROM	TO	LITHOLOGICAL DESCRIPTION	SAMPLE No.	FROM	TO	WIDTH	ASSAYS								
							Au ppb	Au chk	Au g/t	Chk g/t	Ag ppm	Cu ppm	Zn ppm	Pb ppm	Ni ppm
		preserved downhole	11885	398.40	399.40	1.00	7								
			11886	399.40	400.40	1.00	5								
		Highly altered mudstones (mainly claystones), moderately green chl'd, mod talcose with mod-strong Fe-carb gnd mass	11887	400.40	401.40	1.00	12	15							
			11888	401.40	402.58	1.18	6								
		m-cg diss elliptical to irreg py patches / wispy replacement pyrite nodules and anhedral grains diss thro													
		399.55 - 396.00:													
		BC at 80dca ptb													
402.48	417.03	<b>Turbidites (S4 +/-i)</b>	11889	402.58	404.00	1.42	4								
		grey, fg, med. bedded siltstones (as 263.00 - 395.55)	11890	404.00	405.50	1.50	7								
		i/c with talcose & chloritic, greenish-grey, vfg, thinly bedded claystones (similar to above) which may in part be very weakly carbonaceous	11891	405.50	406.80	1.30	5								
			11892	407.00	408.50	1.50	9								
			11893	408.50	409.70	1.20	7								
			11894	409.70	411.00	1.30	11								
		Bedding (S0) well preserved, grading and occasional flaming and scouring always indicates that stratigraphic tops face downhole, bedding ranges from 80-30dca, averages 65dca	11895	411.00	412.50	1.50	9								
			11896	412.50	414.00	1.50	8								
			11897	414.00	415.50	1.50	6								
			11898	415.50	416.73	1.23	47	53							
		moderate to strong perv. Fe-carb gndmass dev'd thro	11899	416.73	417.03	0.30	5								
		416.73 - 417.03: contact zone as altered weakly silicified and partially re-xtalized mod. preserved sed's, mod - weak Fe-carb gndmass, med grey, S0 at 70-50dca basal contact xcutting & stepped at about 110dca													

# Globex Mining Enterprises Inc.

## DIAMOND DRILL LOG

PROPERTY: Beauchastel (South Block)  
HOLE No.: BR01-01

Page 21

FROM	TO	LITHOLOGICAL DESCRIPTION	SAMPLE No.	FROM	TO	WIDTH	ASSAYS								
							Au ppb	Au chk	Au g/t	Chk g/t	Ag ppm	Cu ppm	Zn ppm	Pb ppm	Ni ppm
417.03	418.58	<b>Silicified Contact Zone (Mlc, sil)</b> thickly banded, green & pale grey, i/c vfg massive talcose chlorite schist locally fol at 45dca, and fg thick bands of sil'n dev at about 45dca  very strong Fe-carb gnd mass  grades into:	11900	417.03	418.58	1.55	13								
<b>CADILLAC BREAK - Main Trace</b>															
418.58	448.62	<b>Talc-chlorite schist (Mlic)</b> med-dark green-grey and white, vfg, thinly laminated and contorted talc-chl schists showing good cataclastite textures and occ thicker bands of talcose dark green chl. schist especially as margins to other minor lithologies as follows:  Irreg carbonate strrs = wh dolomite (no fizz no stain) with occ short bands of perv mod to weak calcite gnd mass and rare faint bands of perv Fe-carb  418.58 - 424.94: tl talc-chl carb schist, schty at 80 - 0dca 424.94 - 426.34: fg, pale grey to pale green-grey altn band or altered wall rock raft, very weak perv. incipient fuchsite dev'd thro, contacts diffuse at about 70dca 426.34 - 428.60: th banded chl & talc chl schists 428.60 - 433.7: th bnded med grey felsites with chl thds	11901 16612	418.58 441.00	420.00 442.00	1.42 1.00	19 50			0.8	42	22	11	207	

HOLE No: BR01-01

# Globex Mining Enterprises Inc.

## DIAMOND DRILL LOG

PROPERTY: Beauchastel (South Block)  
 HOLE No.: BR01-01

FROM	TO	LITHOLOGICAL DESCRIPTION	SAMPLE No.	FROM	TO	WIDTH	ASSAYS									
							Au ppb	Au chk	Au g/t	Chk g/t	Ag ppm	Cu ppm	Zn ppm	Pb ppm	Ni ppm	
		i/c with sil.d chl +/- talc chl schistosity 75-90dca minor m-cg py dev'd on fractures at base, grades into: 433.7 - 448.62: th banded tl. talc-chl schist & occ thbnd talcose green chl schist bands and angular cobble sized clasts 434.60 - 434.74: fault gouge at 90dca 444.0 schty at 70dca,  Grades at 448.62 at 70dca into:														
448.62	479.43	Talc schist (Mli) (similar to above)		16605	468.00	469.00	1.00	NIL				0.4	44	23	11	320
		Thickly laminated fg grey talc altered massive lithology, stringered by 20-10% white dolomite strs & thds and occ cg WAC (white alt'n spots - carbonate)- becoming more massive looking and coarsely brecciated or polygonally jointed downhole, no significant cleavage dev'd.  mainly dolomite carb strs, occ. mod cc gnd mass & rare Fe-carb (v wk) sections, wk chl gnd mass  tr rare cg diss py grain														
		476.2 - 477.3: bronze coloured fg biot-talc alt'n band dev'd at 62dca, with broad diffuse contacts and strong biotitic core with m-cg cumulate(?) SPINIFEX textured olivine pseudomorphs preserved from 476.86 to 477.03														



# Globex Mining Enterprises Inc.

## DIAMOND DRILL LOG

PROPERTY: Beauchastel (South Block)

HOLE No.: BR01-01

Page 23

FROM	TO	LITHOLOGICAL DESCRIPTION	SAMPLE No.	FROM	TO	WIDTH	Au ppb	Au chk	ASSAYS						
									Au g/t	Chk g/t	Ag ppm	Cu ppm	Zn ppm	Pb ppm	Ni ppm
		479.00 - 479.43: bronze, vfg massive biot-talc reaction contact rim, TC = 36dca sharp, BC at 130dca partially melted													
<b>UN-NAMED VOLCANIC ASSEMBLAGE &amp; INTRUSIVES</b>															
479.43	497.45	<b>Lamprophyre (3L)</b> grey, fg, massive lamprophyre intrusive with m-cg diss. bronze coloured biotite decreasing in size and content downhole, weak biotitic assimilation zone at top contact	16606	483.00	484.00	1.00	NIL			0.8	32	34	15	32	
		488.0 - 497.45 : chill zone grades to aphanitic downhole with minor cg diss biot clots /<20cm, BC at 65dca													
497.45	587.04	<b>Talcose Ultramafic Volcanics (V131 spinifex)</b> med-dk grey, fg, thickly bedded to occ med. bedded magnetic ultramafic extrusive flows with occ inter bands of med. brownish-green biot alteration / 1-2m developed at flow contacts,  Moderate to strong talc, weakly to moderately magnetic thro, weak-mod perv. Fe-carb gnd mass, rare white carb strrs and minor carb thds dev'd sealing fractures & joints - commonly haloed by carb. gndmass  flows massive to blocky, commonly showing polygonal jointing, occ flow top breccias and often very coarse olivine SPINIFEX textures at tops or as "B" cumulate flow centre horizons.	16607	535.00	536.00	1.00	1			0.6	27	23	13	718	

# Globex Mining Enterprises Inc.

## DIAMOND DRILL LOG

PROPERTY: Beauchastel (South Block)

HOLE No.: BR01-01

Page 24

FROM	TO	LITHOLOGICAL DESCRIPTION	SAMPLE No.	FROM	TO	WIDTH	ASSAYS										
							Au ppb	Au chk	Au g/t	Chk g/t	Ag ppm	Cu ppm	Zn ppm	Pb ppm	Ni ppm		
		Stratigraphic tops face downhole,															
		514.0: bedding at 90dca															
		515.63: bedding at 70dca															
		518.7 - 519.3: gougy basal breccia at 42dca															
		528.2 - 529.6: med olive green, chl-biot alt'n centred on flow centre of 63dca															
		533.0 - 533.7: olive altn band, BC at 65dca															
		540.0 - 542.3: olive alt'n centred on basal bx, ca=70dca															
		544.0 - 546.0: fg dk grey syenitized UMV, minor m-cg glomeroporphyritic textures etc.															
		556.8 - 557.3: olive altn band - diffuse contacts															
		557.85: sharp bedding contact at 55dca of v.cg spinifexed flow top in contact with fg, polygonal jointed flow downhole															
		587.04: BC at 68dca knife sharp															
587.04	598.76	<b>Chilled Porphyritic Syenite and Biotite Schist (1SMib)</b> medium grey, fg, massive feldspar micro-porphyritic syenite banded with biot schist /syenitized wall rock bands, occ wall rock xenoliths and p. grey lamp./reaction/assimilation contacts as follows.	16608	595.00	596.00	1.00	NIL					0.1	36	61	19	42	

HOLE No: BR01-01

# Globex Mining Enterprises Inc.

## DIAMOND DRILL LOG

PROPERTY: Beauchastel (South Block)  
 HOLE No.: BR01-01

Page 25

		ASSAYS													
FROM	TO	LITHOLOGICAL DESCRIPTION	SAMPLE No.	FROM	TO	WIDTH	Au ppb	Au chk	Au g/t	Chk g/t	Ag ppm	Cu ppm	Zn ppm	Pb ppm	Ni ppm
		very wk perv, Fe-carb gnd mass in syenite only, non-magnetic													
	587.04 - 587.33:	vfg massive olive talc-biot schist reaction band, lower contact partially melted & assimilated, grades at 90dca into:													
	587.33 - 587.66:	pale grey, mg intermediate intrusive with 15% diss biot thro - lamprophyric looking; BC knife sharp and rotated 90deg to faint foliation at 60dca													
	587.66 - 587.92:	olive talcose biot-chl schist band - mg, strongly micaceous reaction contacts (TC & BC) with fg, wkly bx'd centre, BC sharp at 62dca													
	587.92 - 589.92:	grey aphanitic inter. intrusive, +5% biot wisps, minor v.fg white diss feldspar in upper section minor white xcutting carb strrs, BC at 46dca													
	589.92 - 591.59:	contorted & swirled brownish-green, fgr, talcose biot schist with irreg chilled syn stringer intruding at 589.67-589.79, overall schty at 52dca, minor "S" fold dev'd, BC at 75 part. melted & assim'd													
	591.59 - 598.76:	grey fg chilled syenite, both contacts chilled & biotitic (contact assim'n), upper 2/3rds as 2-5% fg white diss feldspar microporphyry, lower 1/3rd grades into showing 5-10% cg diss. porph'c feld laths (trachytic) and 10% 1-2cm irreg well digested wall rx xenolith balls; BC shp at 55dca													
598.76	602.50	<b>Contact Schist Zone (Mlich, 1S)</b> Grey massive, f-mg, re-xtalized talc-chl-biot schist with brownish-olive green biot schist margins and occ relict UM volc flow textures preserved in centre;													

# Globex Mining Enterprises Inc.

## DIAMOND DRILL LOG

PROPERTY: Beauchastel (South Block)  
HOLE No.: BR01-01

Page 26

FROM	TO	LITHOLOGICAL DESCRIPTION	SAMPLE No.	FROM	TO	WIDTH	ASSAYS									
							Au ppb	Au chk	Au g/t	Chk g/t	Ag ppm	Cu ppm	Zn ppm	Pb ppm	Ni ppm	
		non-magnetic, trace Fe-carb perv gndmass,														
		601.25 - 601.47: grey fg feld. porphyritic intrusive at 75dca														
		schist grades into:														
602.5	679.0	<b>Ultramafic Volcanic Flows (V13 spinifex)</b> dark grey, thickly to occ med. bedded UMW flows commonly showing vcg spinifex olivine psuedomorph textures i/c with fg massive flows, polygonal jointed flows and rare flow top or basal breccias (as 497.45 - 587.04)	16609	651.00	652.00	1.00	NIL				0.8	39	22	11	940	
		talcose thro, wk chl, occ thick brown-olive green alt'n bands (biotitic)developed rhythmically at about 10m intervals														
		trace Fe-carb as broad diffuse bands i/c with minor calcite as rare strs , thds & WAC / dol strs / alt'n gnd mass, spotty weak to moderate magnetic response thro														
		no significant foliation cleavage developed, gross textures well preserved; Stratigraphic tops consistently face downhole based on spinifex textures, grading and cumulate bases														
		666.05: S0 bedding contact at 75dca at top of spinifex top to f-mg, massive, poly. jointed flow base downhole														
		671.97: S0 bedding contact at 88dca at top of spinifex top to f-mg, v wkly fol'd cumulative "C" base downhole														

# Globex Mining Enterprises Inc.

## DIAMOND DRILL LOG

PROPERTY: Beauchastel (South Block)

HOLE No.: BR01-01

Page 27

FROM	TO	LITHOLOGICAL DESCRIPTION	SAMPLE No.	FROM	TO	WIDTH	ASSAYS									
							Au ppb	Au chk	Au g/t	Chk g/t	Ag ppm	Cu ppm	Zn ppm	Pb ppm	Ni ppm	
		679.0: contact on broken core at bottom of very coarsely bladed spinifex text. from 675.2-679.0, olivine blades as sheafs 0.5 to +1m long, getting coarser downhole														
679.0	682.30	<b>Mafic Intrusive (3)</b> dk grey & bluish-grey, mg, massive mafic intrusive containing rare angular wall rock xenoliths,  top contact well digested, wkly chl'c & swirled mafic rich micaceous assimilation zone, massive to tl, foliated at avg cleavage of 55dca / <0.5m  centre of section bit coarser and looks like a chilled diabase ?  non-magnetic, weak perv Fe-carb thro  BC sharp at 62dca														
682.30	737.18	<b>Ultramafic Volcanics (V13 spinifex)</b>  (similar to 602.5 - 679.0)  dark grey  med to thick spinifexed UMV extrusive flows i/c with occ. thick sills / dykes of fg, massive UM feeders or intrusives	16610	703.00	704.00	1.00	NIL				0.4	12	31	16	1370	

# Globex Mining Enterprises Inc.

## DIAMOND DRILL LOG

PROPERTY: Beauchastel (South Block)  
 HOLE No.: BR01-01

Page 28

FROM	TO	LITHOLOGICAL DESCRIPTION	SAMPLE No.	FROM	TO	WIDTH	ASSAYS									
							Au ppb	Au chk	Au g/t	Chk g/t	Ag ppm	Cu ppm	Zn ppm	Pb ppm	Ni ppm	
		Flows mod. magnetic thro, while UM intrusives generally non-magnetic, both have moderate pervasive Fe-carb gnd mass														
		Rare white calcite str's /thds dev'd thro														
		BC at 65dca on top of 5cm olive-brown chl-biot alt'n schist reaction contact band														
737.18	745.36	<b>Lamprophyre (3L)</b> grey, mg porphyritic 20% ferro-magn's (biot & green amph) in aphanitic grey aplite matrix, wkly flow banded or foliated at 55dca parallel to contacts														
		non-magnetic, no sig carb gndmass, fresh looking, rare white carb thds ptf, tr diss f-mg py thro														
		741.0 - 742.0: 50% slightly darker grey, pebbly texture as if ghosts or relicts of preserved intrusion bx														
		BC at 43dca sharp on top of 4cm brown biot-chl schist reaction contact band														
		<b>SOUTH BREAK / SHEAR ZONE</b>														
745.36	745.85	<b>Talc-chlorite-carbonate schist (Mlic)</b> grey, fg, thinly laminated & contorted														

# Globex Mining Enterprises Inc.

## DIAMOND DRILL LOG

PROPERTY: Beauchastel (South Block)

HOLE No.: BR01-01

Page 29

FROM	TO	LITHOLOGICAL DESCRIPTION	SAMPLE No.	FROM	TO	WIDTH	ASSAYS									
							Au ppb	Au chk	Au g/t	Chk g/t	Ag ppm	Cu ppm	Zn ppm	Pb ppm	Ni ppm	
		moderately brown biotitic														
745.85	746.05	<b>Fault</b> green, mg sandy & talcose fault gouge & wall rx bx CA at 40dca														
746.05	802.80	<b>Talc Schist (Mli)</b> med-dark grey, vfg-aphanitic, massive to blocky & brecciated looking talc schists locally veined by 1 to +5% white irreg. dolomitic carb strs and thds  variably magnetic from spotty weak to very thick bands of pervasive moderately magnetic  trace to v. weak perv. Fe-carb gndmass  trace rare pyrite as diss c-mg grains  locally Blocky & Broken, but no sig, penetrative cleavage  BC sharp at 53dca	16611	784.00	785.00	1.00	NIL			0.4	33	25	9	546		
802.80	810.04	<b>Talc Chlorite Schist (Mlic)</b> med green-grey, fg, thickly laminated and well foliated at avg 50dca (range 60 -42dca) with 10% white dolomite carb thds, spots & strs dev'd ptf & xcutting irreg thro  non-magnetic, mod. perv. Fe-carb gndmass  weakly pyritic as follows:	12415 12416 12417 12418 12419	803.00 804.50 806.00 807.50 809.00	804.50 806.00 807.50 809.00 810.04	1.50 1.50 1.50 1.50 1.04	3 15 NIL NIL 17									

# Globex Mining Enterprises Inc.

## DIAMOND DRILL LOG

PROPERTY: Beauchastel (South Block)  
HOLE No.: BR01-01

Page 30

FROM	TO	LITHOLOGICAL DESCRIPTION	SAMPLE No.	FROM	TO	WIDTH	ASSAYS									
							Au ppb	Au chk	Au g/t	Chk g/t	Ag ppm	Cu ppm	Zn ppm	Pb ppm	Ni ppm	
		803.00 - 804.50: 1% mg diss py, mod. sheared showing poorly defined 'C-S' fabric (C=46dca, S=28dca) and minor parasitic drag folds & tensions, shearing overall is sinistral in motion														
		804.50 - 806.00: trace py, cg cataclastic schist texture thro at 48dca														
		806.00 - 807.50: tr - 1% c-fg diss py, minor qcthds pts														
		807.50 - 809.00: tr diss py														
		809.00 - 810.04: 1/2% cg diss py, BC at 85dca xcutting schty of 53dca														
810.04	822.56	<b>Pyritic Chilled Syenite (1S py)</b>	12420	810.04	811.00	0.96	178	206								
		medium grey, vfg to fg, massive syenite, locally bit frac'd	12421	811.00	812.00	1.00	47									
		and sealed with rare white qc thds / qc strs, minor biot	12422	812.00	813.00	1.00	351									
		thds and rare 2-4cm well digested & amph'd xenoliths	12423	813.00	814.00	1.00	148									
			12424	814.00	815.00	1.00	268									
		non-magnetic, trace Fe-carb dev'd as gndmass on irreg	12425	815.00	815.98	0.98	25									
		fracture thds & occ as spotty v.wk bands	12426	815.98	816.58	0.60	7									
			12427	816.58	817.50	0.92	271									
		wk fracture set at 45dca & 130dca	12428	817.50	818.50	1.00	21									
			12429	818.50	819.50	1.00	98	76		0.4	4	57	9	32		
		810.04 - 811.00: chilled, wkly frac'd & weakly biot'c	12430	819.50	820.50	1.00	6									
		syn, 5% vfg-occ mg diss py thro, 810.04-810.17 is	12431	820.50	821.50	1.00	14	18								
		irreg talcose biot schist str contact reaction rind	12432	821.50	822.07	0.57	17									
		with irreg & undulating BC of 10dca,	12433	822.07	822.56	0.49	92									
		811.00 - 812.00: chilled grey syn with occ minor bands of														
		f-mg wkly microporph'c syn, +5% vfg-fg diss py thro														
		grades into:														
		812.00 -813.00: fg syn, wkly frac'd, 5-10% vfg-mg diss py														



# Globex Mining Enterprises Inc.

## DIAMOND DRILL LOG

PROPERTY: Beauchastel (South Block)  
 HOLE No.: BR01-01

FROM	TO	LITHOLOGICAL DESCRIPTION	SAMPLE No.	FROM	TO	WIDTH	ASSAYS								
							Au ppb	Au chk	Au g/t	Chk g/t	Ag ppm	Cu ppm	Zn ppm	Pb ppm	Ni ppm
		thro and on fractures													
813.00	814.00	fg sil'd syn, 10-15% diss fg py, +5% grey qtz lens / str thds on fractures, wkly ser'c so that shows faint colour change to p. greenish-grey													
814.00	815.00	(as above) - wkly sil'd, +10% fg diss py, 2-3% qcthds, tr cg tour ass'd qtz at 814.3 / 10cm													
815.00	815.98	similar to above, fg, massive with amph'd xeno's at 815.16-.23 and 815.49-.59; +5% vfg-fg py BC at about 90dca													
815.98	816.58	fg, green & white, thinly lam'd chlorite -talc-carbonate schist, 1-2% mg diss py, both contacts marked by development of m-cg biot schist walls / 2-4 cm, BC shp 120dca													
816.58	817.50	f-mg syn, wkly porph'c, 1-2% mg diss py													
817.50	818.50	fg syn, mod frac'd, 1-2% f-mg py													
818.50	819.50	fg chilled syn, bit frac'd, tr py													
819.50	820.50	fg chilled syn, bit frac'd, tr-1/2% py													
820.50	821.50	fg chilled syn, bit frac'd, tr py													
821.50	822.07	f-mg syn, bit frac'd, wkly fol'd at 62dca, tr py, irreg undulating BC at 90dca, BC as tight slip													
822.07	822.56	80% chilled syn intrusion breccia i/c with thds, bands & strrs biot schist, breccia grades finer downhole, tr - 1% vfg diss py, schty at 70dca Grades into:													
822.56	827.28	<b>Syenite &amp; Schist (Mlchi, 1S)</b> green to olive / brownish-green & white, chlorite - biotite talc-carbonate schists, fg, well foliated, thin to thickly laminated to thickly banded and stringered with +5% white irreg dolomite strrs, knots & thds; occ xcutting brown biot	12434	822.56	823.04	0.48	10								
			12435	823.04	823.60	0.56	NIL								
			12436	823.60	823.90	0.30	NIL								
			12437	823.90	824.75	0.85	NIL								
			12438	824.75	825.70	0.95	NIL								

# Globex Mining Enterprises Inc.

## DIAMOND DRILL LOG

PROPERTY: Beauchastel (South Block)  
HOLE No.: BR01-01

Page 32

FROM	TO	LITHOLOGICAL DESCRIPTION	SAMPLE No.	FROM	TO	WIDTH	ASSAYS								
							Au ppb	Au chk	Au g/t	Chk g/t	Ag ppm	Cu ppm	Zn ppm	Pb ppm	Ni ppm
		schist strs and Xcutting p. grey chilled syenite strs /bands (similar to above)	12439	825.70	826.70	1.00	2								
			12440	826.70	827.22	0.52	NIL								
		non-magnetic, schist shows mod. perv Fe-carb gndmass, trace rare diss pyrite grain													
		822.56 - 823.04: biot schist & augened knots relic syn? at 68dca, contact zone, 1% fg py, grades into:													
		823.04 - 823.60: green, white & occ brown, chl-biot talc schist, no sig. min'n, BC at 60dca sub-pts													
		823.60 - 823.90: sheared, sil'd & wkly biotic syn str bnd or ctz, few spks vfg py, BC at 56dca pts													
		823.90 - 824.75: olive & white, tl-thl chl-carb schist, with chilled p/grey syn band pts at 824.18-37; tr few specks vfg py,													
		824.75 - 826.70: green talcose chl schist, tr mg /cg diss py, schty at 60dca, BC on 1cm biot schist contact bnd pts													
		826.70 - 827.22: grey chilled syenite band with vague cg diss feld megacrysts, BC at 69dca shp													
		827.22 - 827.28: green talcose chl schist, tr-1% m-cg py BC at 66dca pts													
827.28	850.17	<b>Banded Talc-Chlorite+/-Biotite schist (Mlic +/-b)</b> grey, fg, thickly banded talc schist with 5-+10% irreg white carb strs, knots & thds dev'd thro (as 746.05 - 802.80) i/c with occ. med to thick bands of brownish olive talcose and biotitic fg, massive chlorite schist	12441	827.22	828.00	0.78	NIL								

HOLE No: BR01-01

# Globex Mining Enterprises Inc.

## DIAMOND DRILL LOG

PROPERTY: Beauchastel (South Block)  
 HOLE No.: BR01-01

Page 33

FROM	TO	LITHOLOGICAL DESCRIPTION	SAMPLE No.	FROM	TO	WIDTH	ASSAYS										
							Au ppb	Au chk	Au g/t	Chk g/t	Ag ppm	Cu ppm	Zn ppm	Pb ppm	Ni ppm		
		mod. spotty magnetic resp, mod perv Fe carb gndmass trace m-vcg diss py															
		827.28 - 830.10: grey talc schist															
		830.10 - 830.57: brown biot-chl schist band at 65dca															
		830.57 - 844.16: thl talc-chl schist, mod frac'd & carb str sealed															
		844.16 - 845.18: brown talcose biot schist bnd at 52dca															
		845.18 - 847.32: massive grey talc schist, BC at 40dca shp															
		847.32 - 848.0 : sheared cataclastic breccia text'd talc-chl															
		848.0 - 850.17: massive grey talc schist, grades at 60dca into 10cm dk green-brown reaction contact schist rind															
850.17	851.10	<b>Lamprophyre (3L)</b> grey, f-mg, (as 737.18 - 745.36) well foliated ptc at 65dca,  mod wispy biot, tr cg diss py, wk perv. Fe-carb gndmass  BC at 63dca on top of 2cm chl schist reaction band															
851.10	853.67	<b>Talc-Chlorite Schist (Mlic)</b> green-grey, fg, tl (thinly lam'd) to thinly banded schist with highly irreg & contorted 20-10% white dolomite thds, strs & knots dev'd thro, avg bnding at 50dca, bit Blocky  rare m-cg spk pyrite, mod-strong Fe-carb gndmass,  BC at 56dca? (on minor GND core section)	11902	852.50	853.67	1.17	8										

# Globex Mining Enterprises Inc.

## DIAMOND DRILL LOG

PROPERTY: Beauchastel (South Block)  
HOLE No.: BR01-01

Page 34

FROM	TO	LITHOLOGICAL DESCRIPTION	SAMPLE No.	FROM	TO	WIDTH	ASSAYS								
							Au ppb	Au chk	Au g/t	Chk g/t	Ag ppm	Cu ppm	Zn ppm	Pb ppm	Ni ppm
853.67	856.24	<b>Contact Zone (ctz)</b>	11903	853.67	855.00	1.33	18								
		dark brown, fg, talcose biot schist with +20% pale green diss cg, anhedral talc? psuedomorphs of lithic frags? or injection breccia and i/c with occ med bands of pale grey, chilled feldspar porphyritic syenite	11904	855.00	856.24	1.24	3225			3.12	3.33				
		non-magnetic, no sig, Fe-carb, fg diss py in syn:													
		853.67 - 855.00: biot schist, wk fol'n at 55-90dca, no sig. min'n, 3% white qc str xcutting core at base of sect'n at about 10dca, grades into:													
		855.00 - 856.24: 50% biot-chl schist schty at 62dca intruded by 2 irreg bands of feld. porph with irreg bx'd walls at 90 & 110dca min'd with 5% fg diss py													
		BC at 50dca shp of biot schist sheeting into syn													
856.24	920.91	<b>Pyritic Porphyritic Syenite (1FP py)</b>	11905	856.24	857.00	0.76	1285			1.20	1.37				
		pale-med. grey turning to pale & med. pink & grey, massive f-mg syenite with 5% to locally 10% m-cg grey to white, occ. zoned and well milled and well rounded to subrounded and rarely subhedral feldspar megacrysts;	11906	857.00	858.60	1.60	227		215						
			11907	858.60	860.00	1.40	19								
			11908	860.00	861.50	1.50	10								
			11909	861.50	863.00	1.50	9								
			11910	863.00	864.50	1.50	8		6						
		faint foliation or flow banding at 60 to 80dca sub-parallel to most common joint set of 35-45dca, joints also at 80-90dca and rarely at 135dca, RQD = 100%	11911	864.50	865.70	1.20	4								
			11912	865.70	866.65	0.95	1								
			11913	866.65	868.00	1.35	3								
			11914	868.00	869.50	1.50	7								
		occ. green & creamy white, tl, cooked looking talc-chl schist xenoliths and bands, concentrated at margins; xeno's partially resorbed	11915	869.50	871.00	1.50	9								
			11916	871.00	872.50	1.50	24								
			11917	872.50	873.50	1.00	15								

# Globex Mining Enterprises Inc.

## DIAMOND DRILL LOG

PROPERTY: Beauchastel (South Block)  
 HOLE No.: BR01-01

Page 35

FROM	TO	LITHOLOGICAL DESCRIPTION	SAMPLE No.	FROM	TO	WIDTH	ASSAYS								
							Au ppb	Au chk	Au g/t	Chk g/t	Ag ppm	Cu ppm	Zn ppm	Pb ppm	Ni ppm
			11918	873.50	874.40	0.90	16								
		minor (<3%) creamy-white dolomitic &/ grey & white qtz-carb	11919	874.40	875.41	1.01	12								
		stringers dev'd xcutting thro, mainly as flats at 135dca	11920	875.41	876.50	1.09	31								
		but also ptf at 55dca	11921	876.50	878.00	1.50	165	181							
			11922	878.00	879.50	1.50	55								
		trace to v.v. wk perv. Fe-carb gndmass & occ Fe-carb dev'd	11923	879.50	881.00	1.50	316								
		on irreg healed frac's / joints ass'd with v. pale green	11924	881.00	882.50	1.50	29								
		seric development (after destructive clay alt'n)	11925	882.50	883.50	1.00	958								
			11926	883.50	884.50	1.00	42								
		mineralized by vfg to occ mg diss anhedral py as follows:	11927	884.50	886.00	1.50	14								
			11928	886.00	887.50	1.50	21								
		856.24 - 857.00: 3% fg py, chill zone with wispy biot &	11929	887.50	889.00	1.50	57								
		minor elong. cg feld porph clast, foln at 34dca,	11930	889.00	890.00	1.00	311								
		grades into:	11931	890.00	891.00	1.00	64								
		857.00 - 858.60: 3-1% fg py diss & as occ SMS str thd,	11932	891.00	892.30	1.30	6	5							
		3% vit. grey qstr thds, porph syn, fg matrix, mega-	11933	892.30	893.50	1.20	16								
		crysts increasing in size down hole & occ saus'd;	11934	893.50	895.00	1.50	11								
		856.4-856.6 well fol'd chl-talc-carb schist xeno	11935	895.00	896.50	1.50	1								
		at 48dca, walls partly melted & resorbed	11936	896.50	898.00	1.50	3								
		858.60 - 860.00: 1-3% vfg-fg diss py, 1% qstrs, flow bnnd	11937	898.00	899.50	1.50	49								
		porph'c syn at 51dca with minor chl thds becoming	11938	899.50	901.00	1.50	3								
		massive to wkly fol / bnnd downhole	11939	901.00	902.50	1.50	2								
		860.00 - 861.50: 3% vfg-fg diss py, xeno wedge at 860.71/2cm	11940	902.50	904.00	1.50	19								
		861.50 - 863.00: 2-5% f-mg diss py, grey to faintly pink	11941	904.00	905.50	1.50	13	18							
		grey downhole, chl-carb xenos at 861.74-.80, 862.13-	11942	905.50	907.00	1.50	18								
		862.30	11943	907.00	908.50	1.50	11								
		863.00 - 864.50: 2-4% fg diss py, tr qcthds, occ chl thds	11944	908.50	910.00	1.50	10								
		864.50 - 865.70: 3% py, fg, lower contact chilled to aplite	11945	910.00	911.50	1.50	5								
		/30cm, BC at approx 90dca, undulating intrusive	11946	911.50	913.00	1.50	NIL								
		865.70 - 866.65: green & wh, bx'd & contorted chl-carb schist	11947	913.00	914.50	1.50	NIL								

HOLE No: BR01-01

# Globex Mining Enterprises Inc.

## DIAMOND DRILL LOG

PROPERTY: Beauchastel (South Block)  
HOLE No.: BR01-01

Page 36

FROM	TO	LITHOLOGICAL DESCRIPTION	SAMPLE No.	FROM	TO	WIDTH	ASSAYS								
							Au ppb	Au chk	Au g/t	Chk g/t	Ag ppm	Cu ppm	Zn ppm	Pb ppm	Ni ppm
		bx'd, milled & pebbly looking in part, schty at 60dca	11948	914.50	916.00	1.50	4								
		avg, 866.44-54 = wedge of chilled syn with reaction	11949	916.00	917.50	1.50	24								
		contacts (TC at 38dca, BC at 140dca), no sig. min'n,	11950	917.50	919.00	1.50	65								
		BC at 130dca irreg.	11951	919.00	920.00	1.00	15	17							
866.65	868.00	2-3% fg py, TC bit chilled	11952	920.00	920.91	0.91	32								
868.00	869.50	2-3% vfg-fg diss py, xeno at 868.72 / 3cm, decreasing feld megacrysts downhole, grades into:													
869.50	871.00	tr - 1/2% fg py, fg chilled syn only trace occ m-cg feld megacryst													
871.00	872.50	tr - 1% fg diss py, grades downhole into porph'c syn, increasing feld xtals in size & conc'n after 871.4													
872.50	873.50	1-2% fg py													
873.50	874.40	1-3% fg diss py, shp contact rotated about 90 deg at 75dca													
874.40	875.41	fg, med. grey, inter. intrusive, wkly fol'd and weakly biotitic lamprophyre, no sig min'n, minor white qc thds dev'd thro (<2%) lower contact flamed at BC = 110dca approx.													
875.41	876.50	3-4% fg diss py in pinkish grey porph'c syn, 1-2% qcthds & strs locally bit bleached													
876.50	878.00	1-2% fg py, tr qtz thds													
878.00	879.50	3-1% f-mg py, tr qtz lenses													
879.50	881.00	3-2% m-fg py, 4% qcstr & thds, tr tour / black chl at margins to qstrs													
881.00	882.50	2-1% fg py, porph'c syn, contact at 47dca on minor qc str													
882.50	883.50	tr py, 40% fg p. green seric breccia vein at 60dca and bleached & frac'd pinkish-brown massive bx'd syn., grades into:													

HOLE No: BR01-01

# Globex Mining Enterprises Inc.

## DIAMOND DRILL LOG

PROPERTY: Beauchastel (South Block)  
 HOLE No.: BR01-01

Page 37

FROM	TO	LITHOLOGICAL DESCRIPTION	SAMPLE No.	ASSAYS											
				FROM	TO	WIDTH	Au ppb	Au chk	Au g/t	Chk g/t	Ag ppm	Cu ppm	Zn ppm	Pb ppm	Ni ppm
883.50	- 884.50:	1-2% m&fg diss py, porph'c syn xcut by 1-2cm vit. clear cg qtz & minor cg carb str at 175dca													
884.50	- 886.00:	1% fg diss py													
886.00	- 887.50:	2% f&mg diss py, tr qtz thds													
887.50	- 889.00:	1-3% fg diss py, 3cm seric bz str at 45dca, tr qthds, grades into:													
889.00	- 890.00:	tr fg py, fg (destructive altn band) of sil'd brownish syn as bleach zone in lower half of sample, 5% qtz & qc as str & thds, grades into:													
890.00	- 891.00:	2-3% fg py, porph'c syn, contact BC=70dca													
891.00	- 892.30:	tr vfg py, vfg chilled pink-grey massive syn grades at 70dca into:													
892.30	- 893.50:	3-5% f&mg py, porph'c syn, tr qtz, minor black chl dev'd on irreg frac running 0dca in lower half, grades into:													
893.50	- 895.00:	2% fg py, grades into chilled & greyer syn downhole													
895.00	- 896.50:	1%-tr mg diss py in chilled, v.wkly porph'c pink-grey syn													
896.50	- 898.00:	tr mg py, chilled, wkly porph'c syn, wkly seric / chl in matrix / on fine frac's													
898.00	- 899.50:	1% - tr diss py, tr qtz thds, wkly chl'c and <1% small (<2cm) assim'd xeno ghosts & patches													
899.50	- 901.00:	tr diss py, 2% small rounded xeno's													
901.00	- 902.50:	tr py, 1% qtz thds, tr xenos													
902.50	- 904.00:	1% vfg py, minor chl thds													
904.00	- 905.50:	2-3% vfg-fg py, 1% qcthds, some chl thds													
905.50	- 907.00:	3-4% fg diss py, 1% qtz													
907.00	- 908.50:	2-1% fg py, tr qtz, tr chl thds													
908.50	- 910.00:	tr fg py, increasing seric-chl matrix altn													

HOLE No: BR01-01

# Globex Mining Enterprises Inc.

## DIAMOND DRILL LOG

PROPERTY: Beauchastel (South Block)  
HOLE No.: BR01-01

Page 38

FROM	TO	LITHOLOGICAL DESCRIPTION	SAMPLE No.	FROM	TO	WIDTH	ASSAYS								
							Au ppb	Au chk	Au g/t	Chk g/t	Ag ppm	Cu ppm	Zn ppm	Pb ppm	Ni ppm
		downhole as v. irreg net thd'ing													
	910.00 - 911.50:	tr fg py, seric altn decreasing downhole													
	911.50 - 913.00:	tr - 1% py, 3% xeno bands, card-seric thds dev'd as net veining matrix													
	913.00 - 914.50:	2-3% vfg diss py, destructive alt'n increasing downhole - ghost out feldspar megacrysts													
	914.50 - 916.00:	tr - 1% vfg py, fg ctz, few feld megacrysts preserved, wkly sheared at 35dca													
	916.00 - 917.50:	1% vfg py, porph'c syn, wk seric-Fe-carb thds													
	917.50 - 919.00:	tr-1% vfg py, chilled porph'c syn													
	919.00 - 920.00:	tr few spks fg py, chilled porph'c syn wk flow banding at 35dca													
	920.00 - 920.91:	tr rare vfg py, chilled massive porph'c syn, BC at 105dca partly melted													
920.91	922.15	<b>Meta-chlorite-carbonate schist (Mlc)</b> green and creamy white, fg, very thinly laminated and highly contorted, crenulated and locally disrupted, green chlorite and white dolomite schist, core angles range 75-10dca, probably large wall rock raft in syenite,  no talc, looks cooked, no sig. min'n  BC at 130dca partially melted	11953	920.91	922.15	1.24	2								
922.15	930.19	<b>Chilled Porphyritic Syenite (1FPcz)</b> grey to pinkish-grey, fg, massive & wkly feld porphyritic syenite (as 856.24-920.91)	11954	922.15	923.00	0.85	7								
			11955	923.00	924.50	1.50	4								
			11956	924.50	926.00	1.50	4								
			11957	926.00	927.50	1.50	4								
		922.15 - 923.00: 8-1% vf-fg diss py decreasing downhole,	11958	927.50	929.00	1.50	2								

HOLE No: BR01-01



# Globex Mining Enterprises Inc.

## DIAMOND DRILL LOG

PROPERTY: Beauchastel (South Block)  
HOLE No.: BR01-01

Page 39

FROM	TO	LITHOLOGICAL DESCRIPTION	SAMPLE No.	FROM	TO	WIDTH	ASSAYS								
							Au ppb	Au chk	Au g/t	Chk g/t	Ag ppm	Cu ppm	Zn ppm	Pb ppm	Ni ppm
		few small amphibolitic patches/xenos, wk fol'n at 35dca	11959	929.00	930.19	1.19	8								
		923.00 - 924.50: <1% vfg py, grey porph'c syn													
		924.50 - 926.00: tr vfg py, chilled porph'c syn, grey													
		926.00 - 927.50: tr vfg py, chilled grey porph'c syn, cg round cg syn xeno at 4cm diam at 926.68													
		927.50 - 929.00: tr - 2% vfg diss py, chilled porph, well fol'd at 40dca, wkly biot'c, 3% small xeno's													
		929.00 - 930.19: 1-5% fg py, vfg matrix syn with rev. graded cg feld porph megacryst increasing downhole (floating?) to contact, contact partly melted & showing broad 30cm amph'd reaction halo at 38dca													
930.19	937.40	<b>Talc-chlorite schist (Mlic)</b>	11960	930.19	931.40	1.21	2								
		grey, fg, thickly banded talc schists	11961	931.40	932.90	1.50	NIL								
			11962	932.90	934.40	1.50	1								
		weak spotty mag to non-magnetic, mod. perv Fe-carb gndmass	11963	934.40	935.90	1.50	2		3						
			11964	935.90	937.40	1.50	4								
		930.19 - 931.40: talcose biot schist grading to chl-talc schist downhole at 38-50dca, few spks py													
		931.40 - 932.90: chl-talc schist													
		932.90 - 934.40: talc-chl schist, rare grains cg py													
		934.40 - 935.90: tr - 1% cg diss py													
		935.90 - 937.40: 1% vcg diss py, grades into brown biot-talc schist /40cm at base, BC at 60dca rotated 60dca clockwise to schistosity of 50dca													
937.40	938.22	<b>Chilled Syenite (1S cz)</b>	11965	937.40	938.22	0.82	5								
		grey, aphanitic to vfg, massive with 3% vague grey feldspar cg-vcg porphyritic laths in center (flow banding) and fg													

# Globex Mining Enterprises Inc.

## DIAMOND DRILL LOG

PROPERTY: Beauchastel (South Block)  
 HOLE No.: BR01-01

FROM	TO	LITHOLOGICAL DESCRIPTION	SAMPLE No.	FROM	TO	WIDTH	ASSAYS									
							Au ppb	Au chk	Au g/t	Chk g/t	Ag ppm	Cu ppm	Zn ppm	Pb ppm	Ni ppm	
		diss biot														
		non magnetic, tr fg diss py														
		BC at 60dca ptf on 2cm biot schist reaction rim														
938.22	942.28	<b>Chlorite-talc-biotite schist (Mlcib)</b>	11966	938.22	939.70	1.48	5									
		green grey, fg, thickly laminated chl-talc -carbonate	11967	939.70	941.00	1.30	3									
		schist grading into dark greenish-brown talcose biotite	11968	941.00	942.28	1.28	2									
		schist downhole over last 60cm (as reaction contact)														
		non-magnetic, tr perv Fe-carb gndmass														
		938.22 - 939.70: no sig min'n, 10% cstr, schty at 65dca														
		939.79 - 941.00: chl-talc schist, 25% cstrs, cg anhedral														
		stibnite? developed as splash in white cstr wall														
		at 940.93														
		941.00 - 942.28: chl grading to biot schist, no sig min														
		BC at 60dca ptf, partly melted														
942.28	946.80	<b>Feldspar Porphyry (1PP py)</b>	11969	942.28	943.70	1.42	17									
		med-dk grey massive porphyry; matrix vfg with +15% f-mg	11970	943.70	945.30	1.60	4									
		white to p. grey, occ zoned porphyritic feldspars and minor	11971	945.30	946.80	1.50	2									
		fg biot.; contact margins mod'ly chilled														
		non-magnetic, non-carb'd, minor green chl dev'd as thd flats														
		on fractures, and tr - +2% white qcthd flats at 130-145dca														
		942.28 - 943.70: 1-2% vfg-fg diss py in matrix & on flat														

# Globex Mining Enterprises Inc.

## DIAMOND DRILL LOG

PROPERTY: Beauchastel (South Block)  
HOLE No.: BR01-01

Page 41

FROM	TO	LITHOLOGICAL DESCRIPTION	SAMPLE No.	FROM	TO	WIDTH	ASSAYS								
							Au ppb	Au chk	Au g/t	Chk g/t	Ag ppm	Cu ppm	Zn ppm	Pb ppm	Ni ppm
		frac's; 2% wh qthd flats, v.wk flow banding at 61dca													
	943.70 - 945.30:	2-3% vfg diss py, 3% qthd flats													
	945.30 - 946.80:	2% fg diss py, 5% qtz as thds & qv flat at													
		946.42/3 cm true at 150dca; BC on gnd & polished core													
		end at 90dca													
946.80	959.00	<b>Talc-chlorite &amp; Chlorite schists (Mlc,Mlc)</b>	11972	946.80	947.50	0.70	3								
		green-grey, fg, thickly laminated talc-chl schist with	11973	947.50	949.00	1.50	NIL								
		+20% white dolomite str, thds & strong WAC (white alt'n													
		spots -carbonate) dev'd thro, i/c with occ green, fg,													
		massive looking med bands of talcose chl schist at 60dca pts													
		non-magnetic, wk-mod perv. Fe-carb gndmass, tr occ cg diss													
		pyrite													
		grades at 60dca into:													
		<b>UN-NAMED VOLCANIC ASSEMBLAGE</b>													
959.00	961.65	<b>Talcose Chloritic Tuffs? (Vti, py)</b>	11974	960.43	961.65	1.22	3								
		green fg, thinly laminated, medium to occ thinly bedded,													
		moderately sheared & schistose talcose & chl'c volc. tuffs													
		bedding occ. wedged & scoured with stratigraphic tops facing													
		downhole, minor i/c grey turbiditic mudstone beds													
		non-magnetic, wk perv Fe-carb, 1-3% cg diss py thro													
		irreg BC at 90dca xcutting schty of 66dca													

# Globex Mining Enterprises Inc.

## DIAMOND DRILL LOG

PROPERTY: Beauchastel (South Block)

HOLE No.: BR01-01

Page 42

FROM	TO	LITHOLOGICAL DESCRIPTION	SAMPLE No.	FROM	TO	WIDTH	ASSAYS							
							Au ppb	Au chk	Au g/t	Chk g/t	Ag ppm	Cu ppm	Zn ppm	Pb ppm
961.65	967.29	<b>Talcose Flow Top Breccia (V13fbi py)</b>	11975	961.65	963.00	1.35	3	4						
		50% grey, vcg angular, matrix supported, lithic shards, grossly banded and contorted thro in pale grey ash matrix	11976	963.00	964.50	1.50	3	2						
			11977	964.50	966.00	1.50	4							
			11978	966.00	967.29	1.29	4							
		thick bed, altered to talc, weak perv Fe-carb gndmass which is more concentrated in ash matrix,												
		2-3% vcg diss py thro												
		BC slightly scoured at 70dca sub-ptf												
		<b>UN-NAMED INTERFLOW SEDIMENTS, BRECCIAS &amp; AEM SOURCE</b>												
967.29	970.00	<b>Mudstones &amp; Tuffs (S4,Vtr)</b>												
		pale & med grey, fg, thinly laminated, med bedded, wkly graphitic mudstones - lam's locally disrupted by de- watering textures & minor re-worked, fg green chl'c tuff												
		bedding at 65-80dca												
		trace rare py grain, spotty wk Fe-carb gndmass												
		BC shp but undulating at 67dca												
970.00	970.36	<b>Graphitic Mudstone (S4gf)</b>												
		black & grey, fg, med bed mod-strongly graphitic mudstone 1% cg py nodules												
		BC on broken core, minor graphitic fault slip at 25dca												

# Globex Mining Enterprises Inc.

## DIAMOND DRILL LOG

PROPERTY: Beauchastel (South Block)  
 HOLE No.: BR01-01

FROM	TO	LITHOLOGICAL DESCRIPTION	SAMPLE No.	FROM	TO	WIDTH	ASSAYS									
							Au ppb	Au chk	Au g/t	Chk g/t	Ag ppm	Cu ppm	Zn ppm	Pb ppm	Ni ppm	
		near base														
970.36	974.90	<b>Carbonitized UM Breccia (V13bi)</b> med-pale grey, mg, thickly laminated, mod. brecciated massive re-xtalized volcanic stringered & lensed by 15% pale grreenish-brown fg biot-chl strrs, thds & lenses  trace rare py grain  moderately talcose, non-magnetic, mod Fe-carb thro  INTERPRETATION: altered clast supported blocky ultra- mafic volcanic breccia, clast size 3 to +10cm?  BC at 38dca on broken core														
974.90	982.30	<b>Weakly Graphitic Mudstone (S4+/gf)</b> med and dk grey, fg, med bedded weakly graphitic mudstones with minor late xcutting qtz-calcite thds, tr py; avg bedding 65dca, undulating, locally flamed  916.05 - 916.25: fault gouge and black gf schist at 30dca  BC at 57dca on gf fault slip														
982.30	984.59	<b>Talcose UM Volcanoclastic Debris Flow (V13br)</b> grey, greenish-grey and brownish-grey, coarse, graded thick bed of matrix supported ultramafic breccia consisting of 40% elliptical, well rounded cobbles and pebbles in an ash matrix, clast size & amounts generally decreasing	11979	982.50	983.50	1.00	4									
			11980	983.50	984.59	1.09	2									

# Globex Mining Enterprises Inc.

## DIAMOND DRILL LOG

PROPERTY: Beauchastel (South Block)

HOLE No.: BR01-01

Page 44

FROM	TO	LITHOLOGICAL DESCRIPTION	SAMPLE No.	FROM	TO	WIDTH	ASSAYS									
							Au ppb	Au chk	Au g/t	Chk g/t	Ag ppm	Cu ppm	Zn ppm	Pb ppm	Ni ppm	
		downhole														
		strongly talcose, moderately chloritic &/ biotitic wk-mod perv Fe-carb gndmass, tr wh dolomite thds, trace rare cg diss py in matrix														
		BC biotitic reaction rim at 60dca rotated 60deg counter clockwise														
		<b>UN-NAMED VOLCANIC ASSEMBLAGE &amp; INTRUSIVES</b>														
984.59	1017.55	<b>Carbonitized &amp; Chilled Syenite (1Scz carb py)</b>	11981	984.59	985.50	0.91	3									
		mottled & waxy looking, med-pale brownish grey aphanitic	11982	985.50	987.00	1.50	2									
		to fg and locally feldspar porphyritic strongly carb'd	11983	987.00	988.50	1.50	3									
		syenite with occ i/c bands and xenoliths of variably	11984	988.50	990.00	1.50	6									
		resorbed country rock, moderately frac'd, crackled &	11985	990.00	991.50	1.50	5									
		sealed with 5-15% white to creamy white Fe-carb thd &	11986	991.50	992.55	1.05	7									
		strs, occ chl thrds on frac's, broad diss f-mg biot zones	11987	992.55	993.65	1.10	15									
		gen haloing xenolith contacts (weak ass'n digestion zones)	11988	993.65	994.62	0.97	12									13
			11989	994.62	995.60	0.98	19									17
		weak vfg to fg diss py thro	11990	995.60	996.50	0.90	6									
			11991	996.50	997.47	0.97	2									
		strong perv Fe-carb gndmass thro, non-magnetic	11992	997.47	998.00	0.53	8									
			11993	998.00	999.00	1.00	9									
		xenoliths change from either volcanics / amphib'd seds to	11994	999.00	1000.00	1.00	29									
		biotite seds downhole	11995	1000.00	1001.00	1.00	26									
			11996	1001.00	1002.50	1.50	8									
		984.59 - 985.50: tr vfg py, 10% qstrs, aph. chill contact	11997	1002.50	1004.00	1.50	29									
		985.50 - 987.00: tr fg py, tr qtz, aphanitic chilled	11998	1004.00	1005.50	1.50	41									

# Globex Mining Enterprises Inc.

## DIAMOND DRILL LOG

PROPERTY: Beauchastel (South Block)

HOLE No.: BR01-01

Page 45

FROM	TO	LITHOLOGICAL DESCRIPTION	SAMPLE No.	FROM	TO	WIDTH	ASSAYS								
							Au ppb	Au chk	Au g/t	Chk g/t	Ag ppm	Cu ppm	Zn ppm	Pb ppm	Ni ppm
987.00	- 988.50:	2-4% vfg diss py, vfg syn	11999	1005.50	1007.00	1.50	62								
988.50	- 990.00:	tr py, 1% qthds with seric bz halos	12000	1007.00	1008.50	1.50	63	63		0.8	11	54	15	91	
990.00	- 991.50:	tr fg py	12401	1008.50	1009.26	0.76	67								
991.50	- 992.55:	1-2% vfg diss py	12402	1009.26	1010.50	1.24	19	22							
992.55	- 993.65:	3%-tr py, lower section leuco pale green	12403	1010.50	1011.75	1.25	8								
		grey carb'd & bleached looking with no sig min'n /40cm	12404	1011.75	1013.00	1.25	15								
		BC shp but flamed at 75dca	12405	1013.00	1014.25	1.25	9								
993.65	- 994.62:	1% f-mg py, tl black & white amphib'd sed	12406	1014.25	1014.60	0.35	13								
		band, BC shp at 64dca	12407	1014.60	1016.00	1.40	12								
994.62	- 995.60:	1% vfg py, carb'd & aph chilled syn	12408	1016.00	1017.55	1.55	6								
995.60	- 996.50:	1-4% vfg diss py, BC shp at 72dca													
996.50	- 997.47:	tr py in green & white chl-carb schist													
		xenolith, BC at 80dca subptf													
997.47	- 998.00:	10-4% f-mg diss py in grey biot'c syn													
		wkly fol at 60dca, grades into:													
998.00	- 999.00:	tr fg diss py in biotic syn, becomes wkly													
		porphyritic downhole, tr qthds													
999.00	- 1000.0:	tr-10% vfg diss in chilled syn enclosing													
		amph'd & bx'd volc? with no sig py from 999.50 to													
		999.80, xeno contacts at 70dca													
1000.0	- 1001.0:	+10% vvfg-fg diss py in aph. chilled &													
		carb'd syn - wkly biotic & banded, grades into:													
1001.0	- 1002.5:	tr fg diss py, wkly chl'c													
1002.5	- 1004.0:	tr fg py, wkly chl'c													
1004.0	- 1005.5:	tr fg py, locally sheared & wkly chl'c													
1005.5	- 1007.0:	tr py, vfg massive chill													
1007.0	- 1008.5:	tr vfg py, massive chill													
1008.5	- 1009.26:	tr fg py at walls to 50% clear to bit													
		smoky cg qtz & minor cg Fe-carb vein running at													
		low angle xcore at 10 to 0dca													

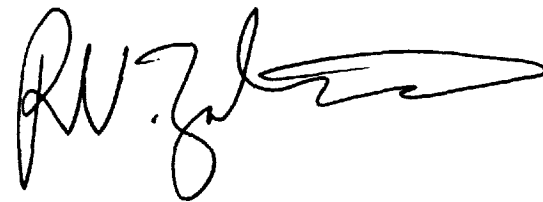
# Globex Mining Enterprises Inc.

## DIAMOND DRILL LOG

PROPERTY: Beauchastel (South Block)  
 HOLE No.: BR01-01

Page 47

FROM	TO	LITHOLOGICAL DESCRIPTION	SAMPLE No.	FROM	TO	WIDTH	ASSAYS							
							Au ppb	Au chk	Au g/t	Chk g/t	Ag ppm	Cu ppm	Zn ppm	Pb ppm
<b>PONTIAC GROUP SEDIMENTS</b>														
1022.05	1033.05	<b>Wackes &amp; Graphitic Mudstone (S3,4 +/-gf)</b>	12413	1022.05	1023.00	0.95	2							
		grey, fg, clean looking, med bedded arkosic greywackes and 2% thinly bedded dark grey graphitic mudstones or graphitic schist; bedding at 60 to 77dca, locally flamed grading shows tops face downhole	12414	1023.00	1024.50	1.50	26							
		moderate perv Fe-carb gndmass												
		1022.05 - 1024.50: 1% to tr py decreasing downhole as minor py thds on fractures												
		1033.05EOH												
		Drillers report end of hole as 1033m												



Logged by R. V. Zalnierunas  
 October 25, 2001 (rev'd Jan.23/02)  
 Rouyn-Noranda, QC  
 core stored at Globex core shack  
 in Rouyn-Noranda  
 (to be moved to off-site storage site)



# Globex Mining Enterprises Inc.

## DIAMOND DRILL LOG

PROPERTY: Beauchastel (South Block)  
HOLE No.: BR01-01

Page 48

---

FROM	TO	LITHOLOGICAL DESCRIPTION	SAMPLE No.	FROM	TO	WIDTH	ASSAYS						
							Au ppb	Au chk	Au g/t	Chk g/t	Ag ppm	Cu ppm	Zn ppm

NOTES:

- a) Survey by sperry sun single shot,  
reported azimuths in plotting program as  
NAD'83 degrees (declination 1.5 degrees E of true)
- b) Samples collected or re-submitted for major &  
minor element whole rock analysis as follows:

FROM(m)	TO(m)	Sample
31.00	32.00	16601 Huronian congl.
82.00	83.00	16602 fg tl V7, <5% qstr & thds
206.00	207.00	16603 fg V7,bz thds, tr py, <3%qcstrs
314.00	315.00	16604 S4 tr py, <1% qcthds
441.00	442.00	16612 cataclastic Mlic Cadillac Break
468.00	469.00	16605 massive fg Mli altn wall
483.00	484.00	16606 fg 3L with +10% biot
535.00	536.00	16607 polyg. jt'd V13 flow
595.00	596.00	16608 biotitic chilled 1S
651.00	652.00	16609 polyg. jt'd V13 flow
703.00	704.00	16610 massive, fg mb V13
784.00	785.00	16611 Mli/V13 (similar to #16605)
818.50	819.50	12429 1S tr py
1007.00	1008.50	12000 chilled 1S tr py

HOLE No: BR01-01

# Globex Mining Enterprises Inc.

## DIAMOND DRILL LOG

PROPERTY: Beauchastel (South Block)  
 HOLE No.: BR01-01

FROM	TO	LITHOLOGICAL DESCRIPTION	SAMPLE No.	FROM	TO	WIDTH	ASSAYS						
							Au ppb	Au chk	Au g/t	Chk g/t	Ag ppm	Cu ppm	Zn ppm
DOWN-HOLE SURVEY DATA													
		DEPTH											
		INCLINATION											
		BEARING											
		63.00											
		-51.75											
		181.50											
		120.00											
		-51.50											
		180.50											
		180.00											
		-50.75											
		181.50											
		241.00											
		-48.25											
		180.50											
		301.00											
		-48.00											
		179.50											
		360.00											
		-47.75											
		420.00											
		-47.75											
		179.50											
		480.00											
		-48.00											
		178.50											
		540.00											
		-47.75											
		178.00											
		600.00											
		-47.25											
		178.50											
		660.00											
		-47.50											
		171.50											
		720.00											
		-47.25											
		780.00											
		-48.00											
		176.50											

# Globex Mining Enterprises Inc.

## DIAMOND DRILL LOG

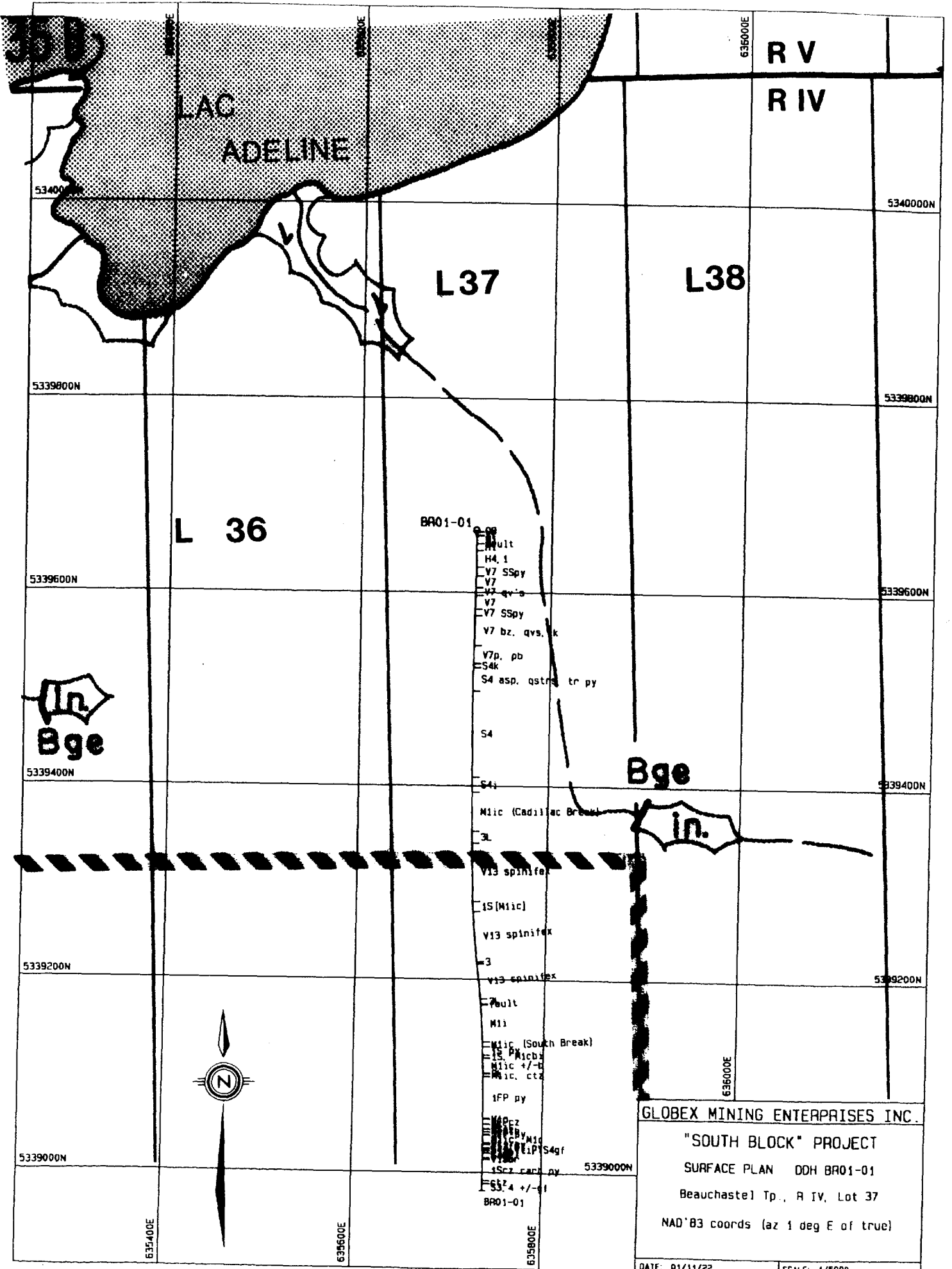
PROPERTY: Beauchastel (South Block)  
 HOLE No.: BR01-01

FROM	TO	LITHOLOGICAL DESCRIPTION	SAMPLE No.	FROM	TO	WIDTH	ASSAYS							
							Au ppb	Au chk	Au g/t	Chk g/t	Ag ppm	Cu ppm	Zn ppm	Pb ppm
		DEPTH      INCLINATION      BEARING												
		600.00      -47.25      178.50												
		660.00      -47.50      171.50												
		720.00      -47.25												
		780.00      -48.00      176.50												
		840.00      -48.00      178.50												
		900.00      -48.00      179.50												
		960.00      -48.00      179.00												
		1020.00      -47.75      180.00												

Appendix A

Drill Hole BR01-01  
Location Plan and Cross section

(Scale 1: 5,000)





## Appendix B

### Drill Hole BR01-01 Combined Precious & Base Metal Assays

(253 samples = 282.57m)

2001/12/21

Page 1  
 \*\* BORSURV ASSAY LOG \*\*

PROPERTY: Beauchastel (South Block)  
 HOLE No.: BR01-01

```

=====
  FROM      TO      WIDTH  Sample  Au ppb  Au chk  Au g/t  Chk g/t  Ag ppm  Cu ppm  Zn ppm  Pb ppm  Ni ppm
  31.00     32.00    1.00   16601    8       9       -       -       0.6    8       70      16      82
  58.00     59.00    1.00   11801    37      33      -       -       -      -       -       -       -
  64.80     65.25    0.45   11802    20      -       -       -       -      -       -       -       -
  69.80     70.20    0.40   11803    47      -       -       -       -      -       -       -       -
  71.10     71.30    0.20   11804    21      -       -       -       -      -       -       -       -
  72.60     73.00    0.40   11805    17      -       -       -       -      -       -       -       -
  73.00     74.00    1.00   11806    4       -       -       -       -      -       -       -       -
  74.00     75.00    1.00   11807    15      -       -       -       -      -       -       -       -
  75.00     76.00    1.00   11808    15      -       -       -       -      -       -       -       -
  81.00     83.00    2.00   16602    14      -       -       -       0.8    26      85      17      77
  95.20     96.00    0.80   11809    62      -       -       -       -      -       -       -       -
  96.00     97.00    1.00   11810   264      -       -       -       -      -       -       -       -
  97.00     98.00    1.00   11811   104      -       -       -       -      -       -       -       -
  98.00     99.22    1.22   11812   151      -       -       -       -      -       -       -       -
  99.22    100.30    1.08   11813   169     163      -       -       -      -       -       -       -
  100.30    100.90    0.60   11814    17      -       -       -       -      -       -       -       -
  100.90    102.00    1.10   11815    93      -       -       -       -      -       -       -       -
  102.00    103.00    1.00   11816   150      -       -       -       -      -       -       -       -
  103.00    104.00    1.00   11817    23      -       -       -       -      -       -       -       -
  104.00    105.00    1.00   11818    21     26      -       -       -      -       -       -       -
  105.00    106.30    1.30   11819    66      -       -       -       -      -       -       -       -
  106.30    106.70    0.40   11820   303      -       -       -       -      -       -       -       -
  106.70    107.80    1.10   11821    41      -       -       -       -      -       -       -       -
  107.80    108.33    0.53   11822   129      -       -       -       -      -       -       -       -
  115.50    116.00    0.50   11823    44      -       -       -       -      -       -       -       -
  130.50    131.50    1.00   11824    31      -       -       -       -      -       -       -       -
  171.67    173.00    1.33   11825    1       -       -       -       -      -       -       -       -
  173.00    174.50    1.50   11826   39      -       -       -       -      -       -       -       -
  174.50    176.00    1.50   11827   58      -       -       -       -      -       -       -       -
  176.00    177.50    1.50   11828    6       -       -       -       -      -       -       -       -
  177.50    179.00    1.50   11829   21      -       -       -       -      -       -       -       -
  179.00    180.00    1.00   11830    6       8       -       -       -      -       -       -       -
  180.00    180.75    0.75   11831   457      -       -       -       -      -       -       -       -
  180.75    181.45    0.70   11832   31      -       -       -       -      -       -       -       -
  181.45    181.93    0.48   11833   939      -       -       -       -      -       -       -       -
=====

```















\*\* BORSURV ASSAY COMPOSITES \*\*

PROPERTY: Beauchastel (South Block)

HOLE No: BR01-01

=====

ZONE: A (13.13 d.t. Core Angle: 70 12.34 t.t.)

FROM:	95.20	---	HANGING WALL	-----	EASTINGS:	635721.16
					NORTHINGS:	5339605.12
					ELEVATION:	224.20
	107		Au	ppb		
	15		Au	chk		
	-0.00		Au	g/t		
	-0.00		Chk	g/t		
	-0.0		Ag	ppm		
	-0		Cu	ppm		
	-0		Zn	ppm		
	-0		Pb	ppm		
	-0		Ni	ppm		

TO:	108.33	-----			EASTINGS:	635721.02
					NORTHINGS:	5339596.97
					ELEVATION:	213.90

ZONE: A1 ( 4.30 d.t. Core Angle: 70 4.04 t.t.)

FROM:	96.00	---	HANGING WALL	-----	EASTINGS:	635721.15
					NORTHINGS:	5339604.62
					ELEVATION:	223.57
	171		Au	ppb		
	41		Au	chk		
	-0.00		Au	g/t		
	-0.00		Chk	g/t		
	-0.0		Ag	ppm		
	-0		Cu	ppm		
	-0		Zn	ppm		
	-0		Pb	ppm		
	-0		Ni	ppm		

TO:	100.30	-----			EASTINGS:	635721.10
					NORTHINGS:	5339601.96
					ELEVATION:	220.20

2002/1/14

Page 2

PROPERTY: Beauchastel (South Block)

HOLE NO: BR01-01

ZONE: A2 ( 1.00 d.t. Core Angle: 70 0.94 t.t.)

FROM:	102.00	---	HANGING WALL	-----	EASTINGS:	635721.09
					NORTHINGS:	5339600.90
					ELEVATION:	218.87
	150		Au	ppb		
	-0		Au	chk		
	-0.00		Au	g/t		
	-0.00		Chk	g/t		
	-0.0		Ag	ppm		
	-0		Cu	ppm		
	-0		Zn	ppm		
	-0		Pb	ppm		
	-0		Ni	ppm		

TO:	103.00	-----			EASTINGS:	635721.08
					NORTHINGS:	5339600.28
					ELEVATION:	218.08

ZONE: A3 ( 2.03 d.t. Core Angle: 70 1.91 t.t.)

FROM:	106.30	---	HANGING WALL	-----	EASTINGS:	635721.04
					NORTHINGS:	5339598.23
					ELEVATION:	215.49
	116		Au	ppb		
	-0		Au	chk		
	-0.00		Au	g/t		
	-0.00		Chk	g/t		
	-0.0		Ag	ppm		
	-0		Cu	ppm		
	-0		Zn	ppm		
	-0		Pb	ppm		
	-0		Ni	ppm		

TO:	108.33	-----			EASTINGS:	635721.02
					NORTHINGS:	5339596.97
					ELEVATION:	213.90



2002/1/14

Page 3

PROPERTY: Beauchastel (South Block)

HOLE NO: BR01-01

ZONE: B ( 3.00 d.t. Core Angle: 70 2.82 t.t.)

FROM: 180.00 --- HANGING WALL ----- EASTINGS: 635720.23  
NORTHINGS: 5339552.08  
ELEVATION: 158.04

370	Au	ppb
-0	Au	chk
-0.00	Au	g/t
-0.00	Chk	g/t
-0.0	Ag	ppm
-0	Cu	ppm
-0	Zn	ppm
-0	Pb	ppm
-0	Ni	ppm

TO: 183.00 ----- EASTINGS: 635720.20  
NORTHINGS: 5339550.13  
ELEVATION: 155.76

ZONE: C (12.52 d.t. Core Angle: 85 12.47 t.t.)

FROM: 810.04 --- HANGING WALL ----- EASTINGS: 635736.30  
NORTHINGS: 5339130.35  
ELEVATION: -309.37

116	Au	ppb
23	Au	chk
-0.00	Au	g/t
-0.00	Chk	g/t
0.0	Ag	ppm
0	Cu	ppm
5	Zn	ppm
1	Pb	ppm
3	Ni	ppm

TO: 822.56 ----- EASTINGS: 635736.67  
NORTHINGS: 5339121.99  
ELEVATION: -318.68

2002/1/14

Page 4

PROPERTY: Beauchastel (South Block)

HOLE NO: BR01-01

ZONE: C1 ( 4.96 d.t. Core Angle: 85 4.94 t.t.)

FROM: 810.04 --- HANGING WALL ----- EASTINGS: 635736.30  
NORTHINGS: 5339130.35  
ELEVATION: -309.37

199	Au	ppb
40	Au	chk
-0.00	Au	g/t
-0.00	Chk	g/t
-0.0	Ag	ppm
-0	Cu	ppm
-0	Zn	ppm
-0	Pb	ppm
-0	Ni	ppm

TO: 815.00 ----- EASTINGS: 635736.45  
NORTHINGS: 5339127.04  
ELEVATION: -313.06

ZONE: C2 ( 0.92 d.t. Core Angle: 85 0.92 t.t.)

FROM: 816.58 --- HANGING WALL ----- EASTINGS: 635736.49  
NORTHINGS: 5339125.98  
ELEVATION: -314.23

271	Au	ppb
-0	Au	chk
-0.00	Au	g/t
-0.00	Chk	g/t
-0.0	Ag	ppm
-0	Cu	ppm
-0	Zn	ppm
-0	Pb	ppm
-0	Ni	ppm

TO: 817.50 ----- EASTINGS: 635736.52  
NORTHINGS: 5339125.37  
ELEVATION: -314.92

2002/1/14

PROPERTY: Beauchastel (South Block)

HOLE NO: BR01-01

ZONE: D ( 3.60 d.t. Core Angle: 53 2.88 t.t.)

FROM:	855.00	---	HANGING WALL	-----	EASTINGS:	635737.35
					NORTHINGS:	5339100.29
					ELEVATION:	-342.79
	1483		Au	ppb		
	96		Au	chk		
	1.33		Au	g/t		
	1.44		Chk	g/t		
	-0.0		Ag	ppm		
	-0		Cu	ppm		
	-0		Zn	ppm		
	-0		Pb	ppm		
	-0		Ni	ppm		

TO:	858.60	-----			EASTINGS:	635737.40
					NORTHINGS:	5339097.88
					ELEVATION:	-345.46

ZONE: D1 ( 2.00 d.t. Core Angle: 53 1.60 t.t.)

FROM:	855.00	---	HANGING WALL	-----	EASTINGS:	635737.35
					NORTHINGS:	5339100.29
					ELEVATION:	-342.79
	2488		Au	ppb		
	-0		Au	chk		
	2.39		Au	g/t		
	2.59		Chk	g/t		
	-0.0		Ag	ppm		
	-0		Cu	ppm		
	-0		Zn	ppm		
	-0		Pb	ppm		
	-0		Ni	ppm		

TO:	857.00	-----			EASTINGS:	635737.38
					NORTHINGS:	5339098.95
					ELEVATION:	-344.27

2002/1/14

PROPERTY: Beauchastel (South Block)

HOLE NO: BR01-01

ZONE: E (14.50 d.t. Core Angle: 70 13.63 t.t.)

FROM:	876.50	---	HANGING WALL	-----	EASTINGS:	635737.60
					NORTHINGS:	5339085.91
					ELEVATION:	-358.76
	163		Au	ppb		
	19		Au	chk		
	-0.00		Au	g/t		
	-0.00		Chk	g/t		
	-0.0		Ag	ppm		
	-0		Cu	ppm		
	-0		Zn	ppm		
	-0		Pb	ppm		
	-0		Ni	ppm		

TO:	891.00	-----			EASTINGS:	635737.77
					NORTHINGS:	5339076.21
					ELEVATION:	-369.54

ZONE: E1 ( 7.00 d.t. Core Angle: 70 6.58 t.t.)

FROM:	876.50	---	HANGING WALL	-----	EASTINGS:	635737.60
					NORTHINGS:	5339085.91
					ELEVATION:	-358.76
	258		Au	ppb		
	39		Au	chk		
	-0.00		Au	g/t		
	-0.00		Chk	g/t		
	-0.0		Ag	ppm		
	-0		Cu	ppm		
	-0		Zn	ppm		
	-0		Pb	ppm		
	-0		Ni	ppm		

TO:	883.50	-----			EASTINGS:	635737.69
					NORTHINGS:	5339081.22
					ELEVATION:	-363.97

2002/1/14

Page 7

PROPERTY: Beauchastel (South Block)

HOLE NO: BR01-01

ZONE: E2 ( 1.00 d.t. Core Angle: 90 1.00 t.t.)

FROM: 889.00 --- HANGING WALL ----- EASTINGS: 635737.75  
NORTHINGS: 5339077.54  
ELEVATION: -368.05

311	Au	ppb
-0	Au	chk
-0.00	Au	g/t
-0.00	Chk	g/t
-0.0	Ag	ppm
-0	Cu	ppm
-0	Zn	ppm
-0	Pb	ppm
-0	Ni	ppm

TO: 890.00 ----- EASTINGS: 635737.76  
NORTHINGS: 5339076.88  
ELEVATION: -368.80

ZONE: F ( 1.50 d.t. Core Angle: 70 1.41 t.t.)

FROM: 917.50 --- HANGING WALL ----- EASTINGS: 635738.03  
NORTHINGS: 5339058.48  
ELEVATION: -389.23

65	Au	ppb
-0	Au	chk
-0.00	Au	g/t
-0.00	Chk	g/t
-0.0	Ag	ppm
-0	Cu	ppm
-0	Zn	ppm
-0	Pb	ppm
-0	Ni	ppm

TO: 919.00 ----- EASTINGS: 635738.05  
NORTHINGS: 5339057.47  
ELEVATION: -390.35

2002/1/14

Page 8

PROPERTY: Beauchastel (South Block)

HOLE NO: BR01-01

ZONE: G ( 5.26 d.t. Core Angle: 70 4.94 t.t.)

FROM: 1004.00	---	HANGING WALL	-----	EASTINGS: 635738.66
				NORTHINGS: 5339000.53
				ELEVATION: -453.45
57		Au	ppb	
18		Au	chk	
-0.00		Au	g/t	
-0.00		Chk	g/t	
0.2		Ag	ppm	
3		Cu	ppm	
16		Zn	ppm	
4		Pb	ppm	
26		Ni	ppm	
TO: 1009.26	-----			EASTINGS: 635738.69
				NORTHINGS: 5338997.00
				ELEVATION: -457.35

## Appendix C

### Drill Hole BR01-01 Assaying Sample Statistics and Gold Histograms

Beauchastel-Rouyn Project  
DDH BR01-01  
Base and Precious Metal Assay Statistics

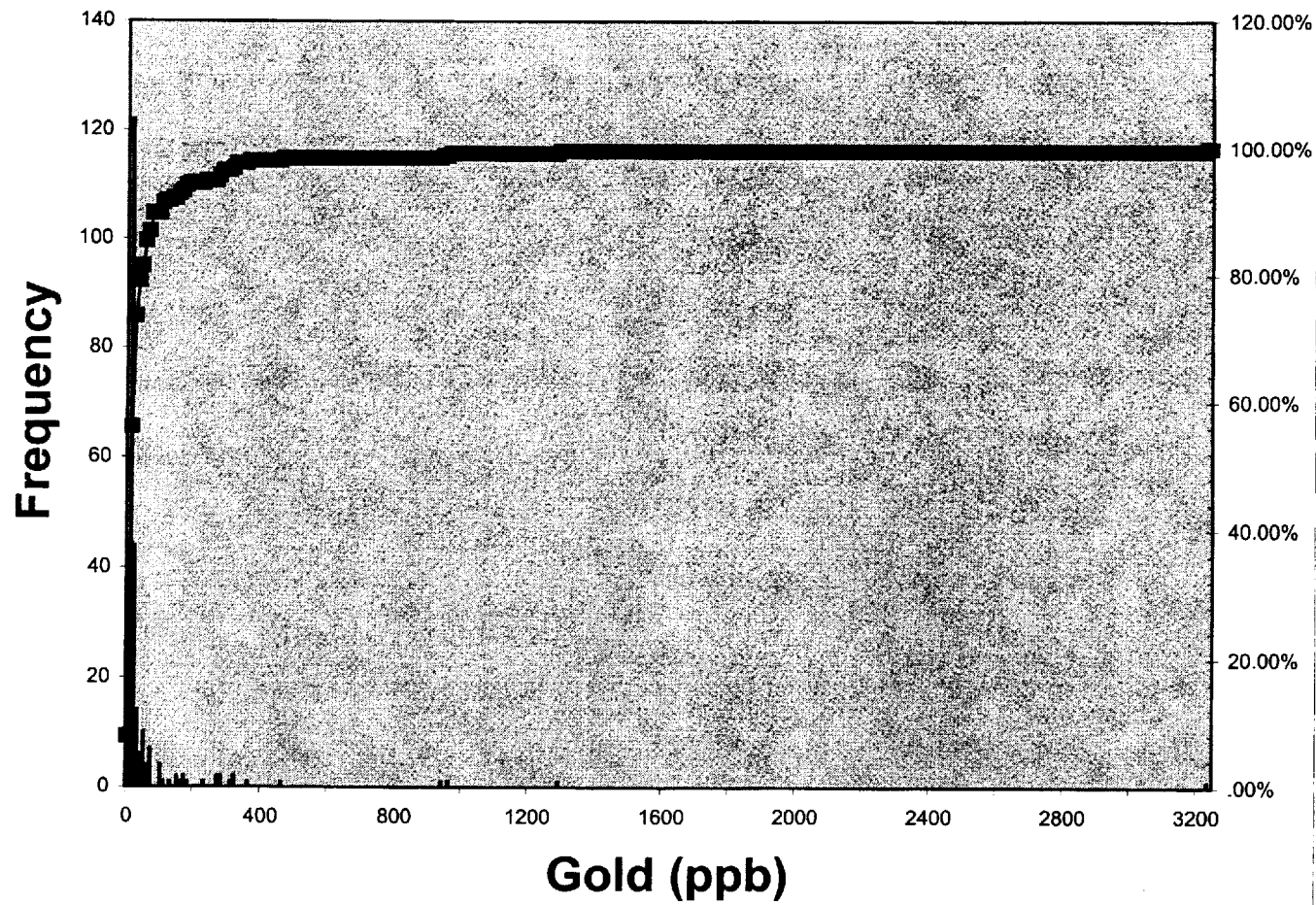
	<i>Au ppb</i>	<i>Au chk</i>	<i>Au g/t</i>	<i>Chk g/t</i>	<i>Ag ppm</i>	<i>Cu ppm</i>	<i>Zn ppm</i>	<i>Pb ppm</i>	<i>Ni ppm</i>	<i>Log Au ppb*</i>
Mean	55.53359684	41.75862069	2.16	2.35	0.557142857	32.28571429	46.85714286	15.5	328.7857143	0.868599386
Standard Error	15.00005802	11.86870447	0.96	0.98	0.069309218	6.249772366	6.498399755	1.765823283	110.9794644	0.064955781
Median	8	15	2.16	2.35	0.6	32.5	44	15	87	0.903089987
Mode	4	9	#N/A	#N/A	0.8	39	22	11	32	0.602059991
Standard Deviation	238.5905286	63.91492961	1.35764502	1.385929291	0.259331346	23.38450694	24.31478544	6.607105732	415.2471328	1.033184941
Sample Variance	56925.44034	4085.118227	1.8432	1.9208	0.067252747	546.8351648	591.2087912	43.65384615	172430.1813	1.067471122
Kurtosis	128.0500459	2.610372881	#DIV/0!	#DIV/0!	-0.846700861	4.83787257	-1.040147831	5.791466412	1.847967077	2.613370985
Skewness	10.3934578	1.973497316	#DIV/0!	#DIV/0!	-0.619995677	1.717819883	0.531252323	2.089060435	1.592572566	-1.261242906
Range	3225	215	1.92	1.96	0.7	95	69	26	1338	5.508529719
Minimum	0	0	1.2	1.37	0.1	4	22	9	32	-2
Maximum	3225	215	3.12	3.33	0.8	99	91	35	1370	3.508529719
Sum	14050	1211	4.32	4.7	7.8	452	656	217	4603	219.7556447
Count	253	29	2	2	14	14	14	14	14	253
Largest(1)	3225	215	3.12	3.33	0.8	99	91	35	1370	3.508529719
Smallest(1)	0	0	1.2	1.37	0.1	4	22	9	32	-2
Confidence Level(95.0%)	29.54141166	24.3119663	12.19790429	12.45202729	0.149733433	13.50180973	14.03893644	3.814828539	239.7565102	0.127925202

NB: value of 0.01  
assigned to Oppb  
Au values



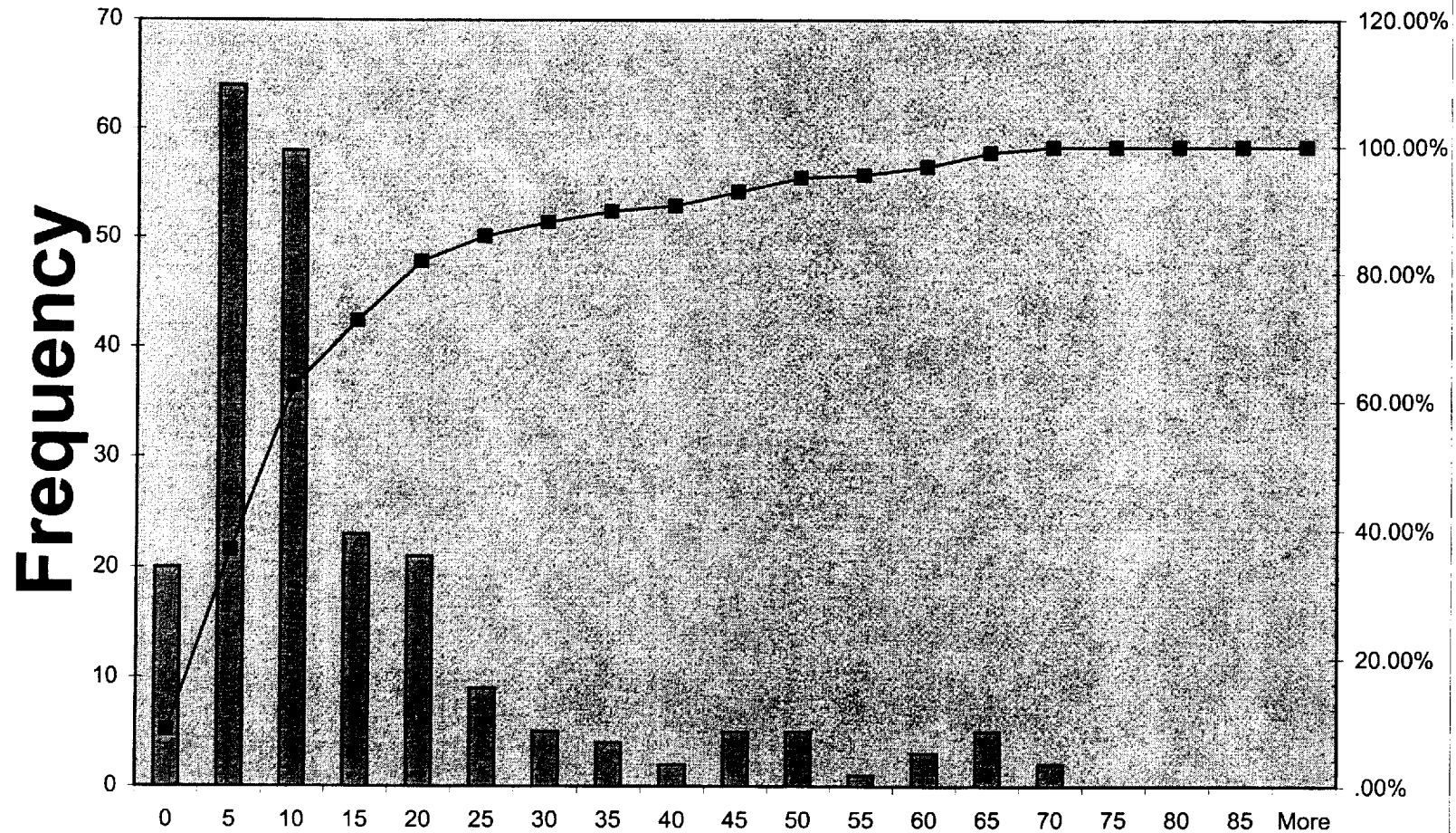
# Gold Distribution Histogram

■ Frequency  
—■ Cumulative %



# Background Gold Histogram

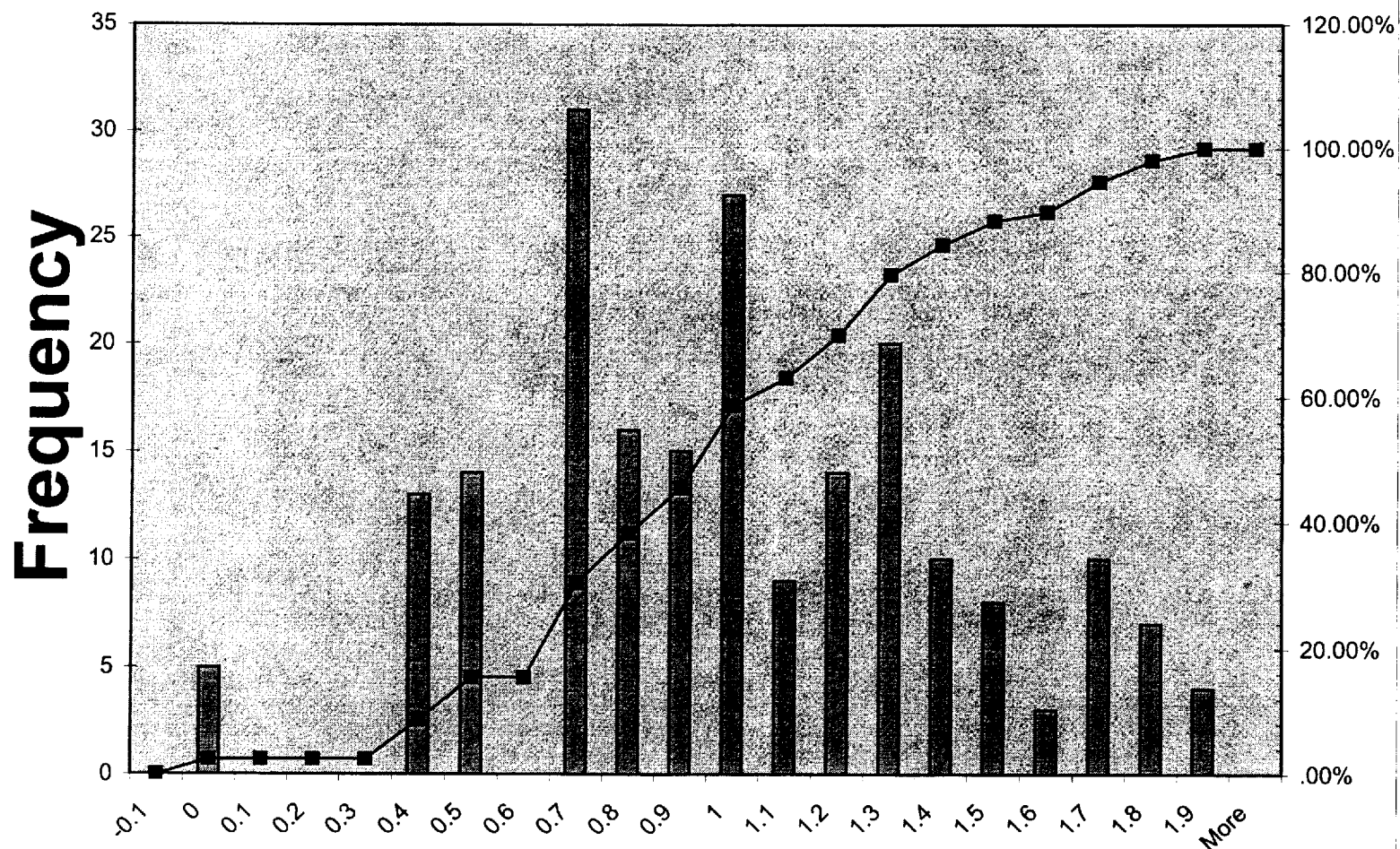
■ Frequency  
—■ Cumulative %



## 5ppb Au Bins

# Background Gold Histogram

■ Frequency  
—■ Cumulative %

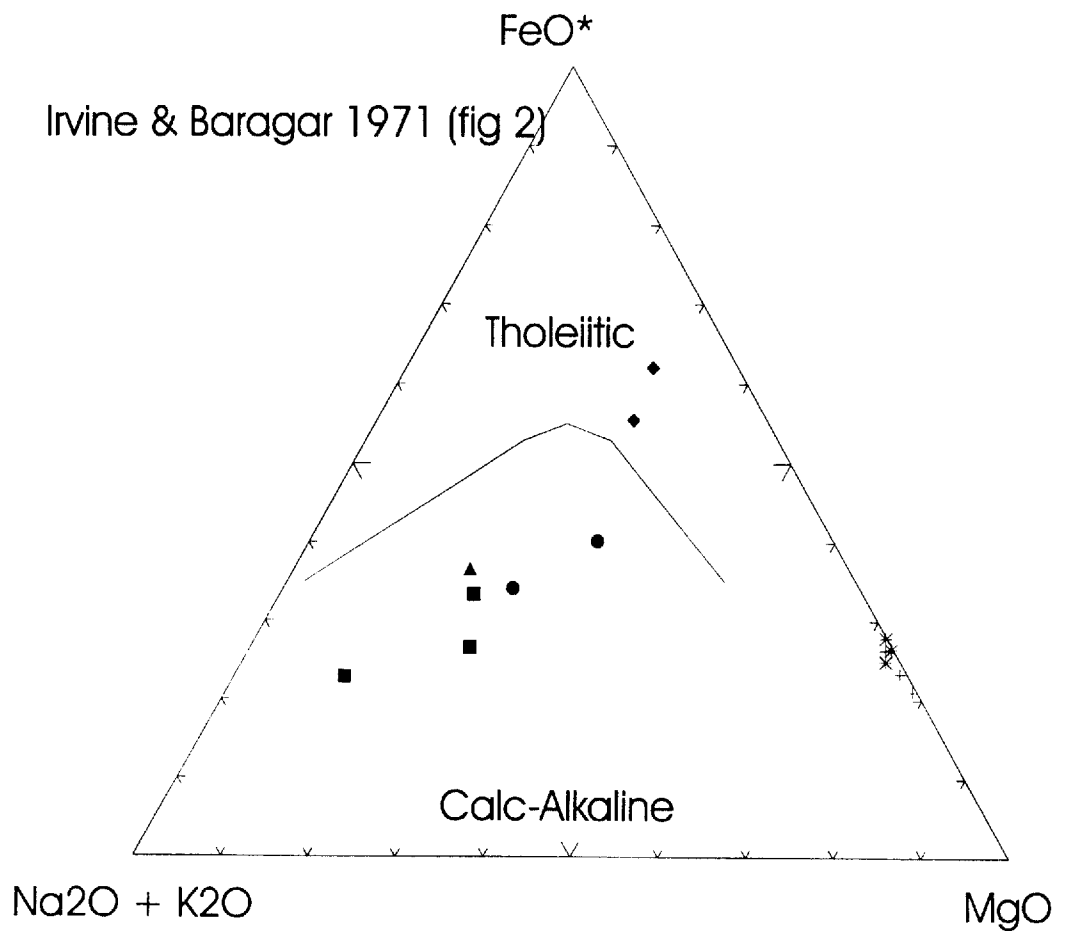
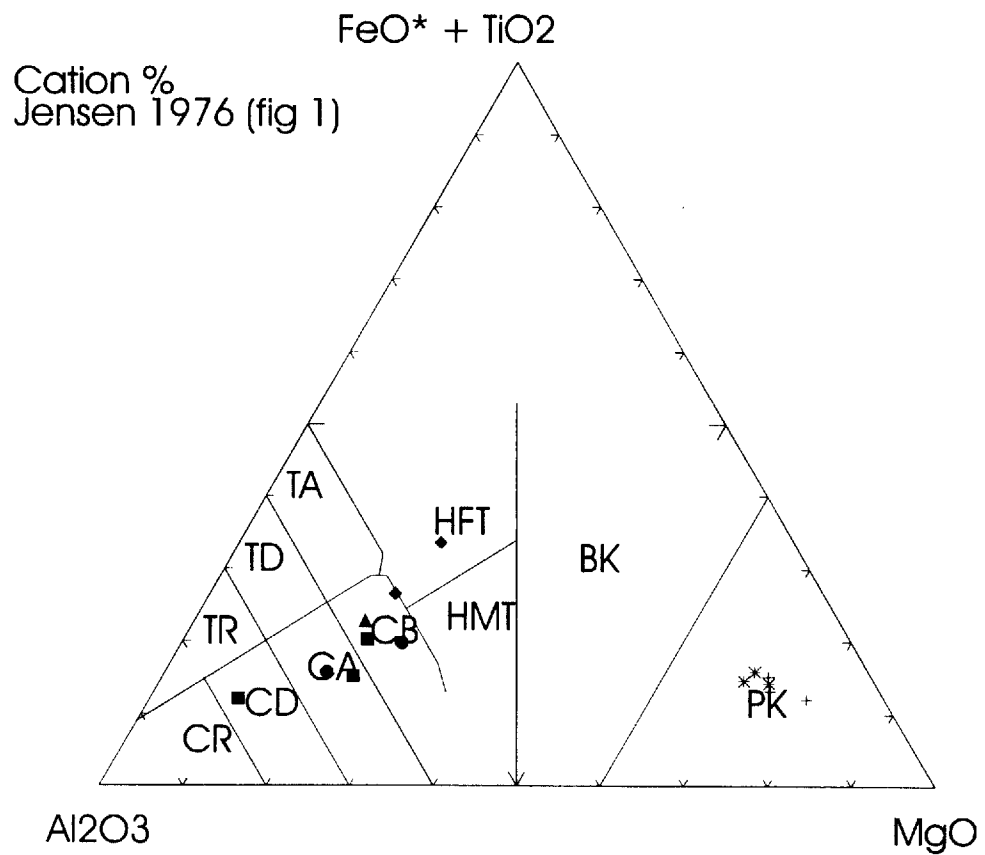


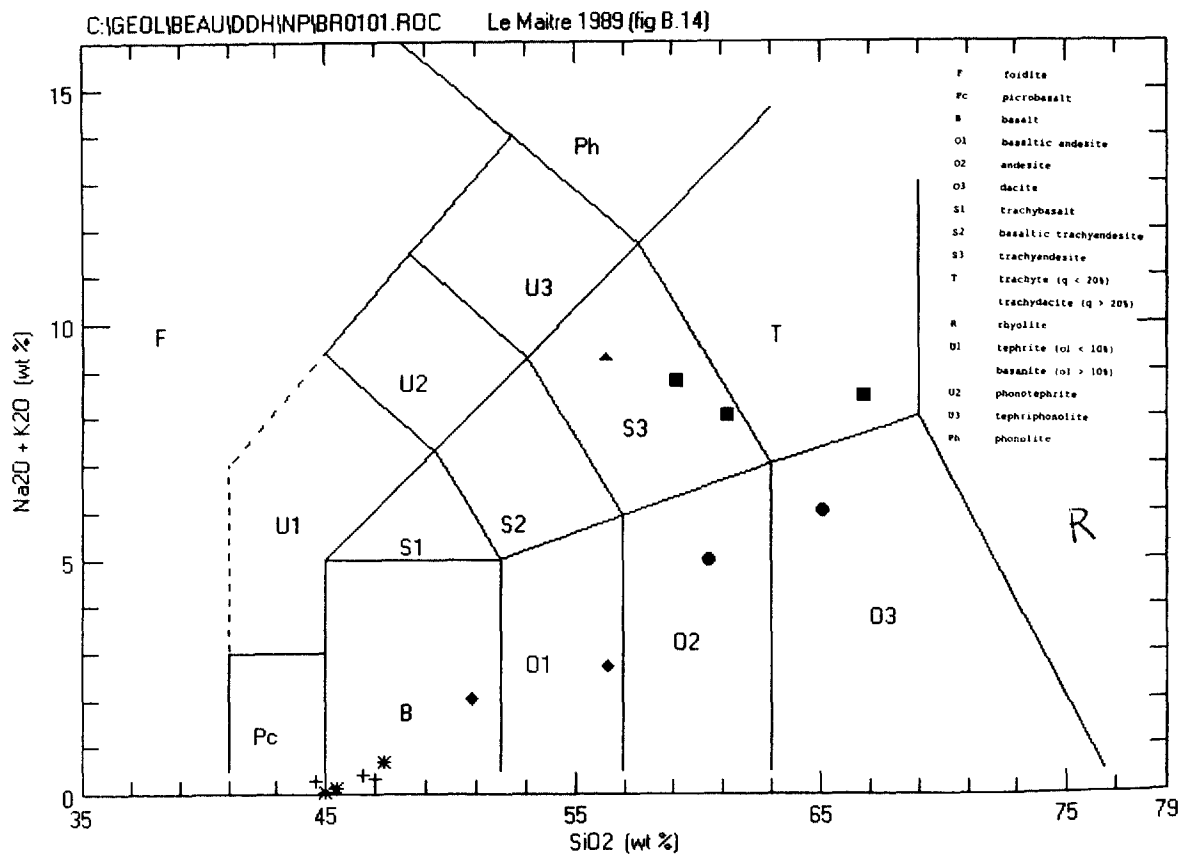
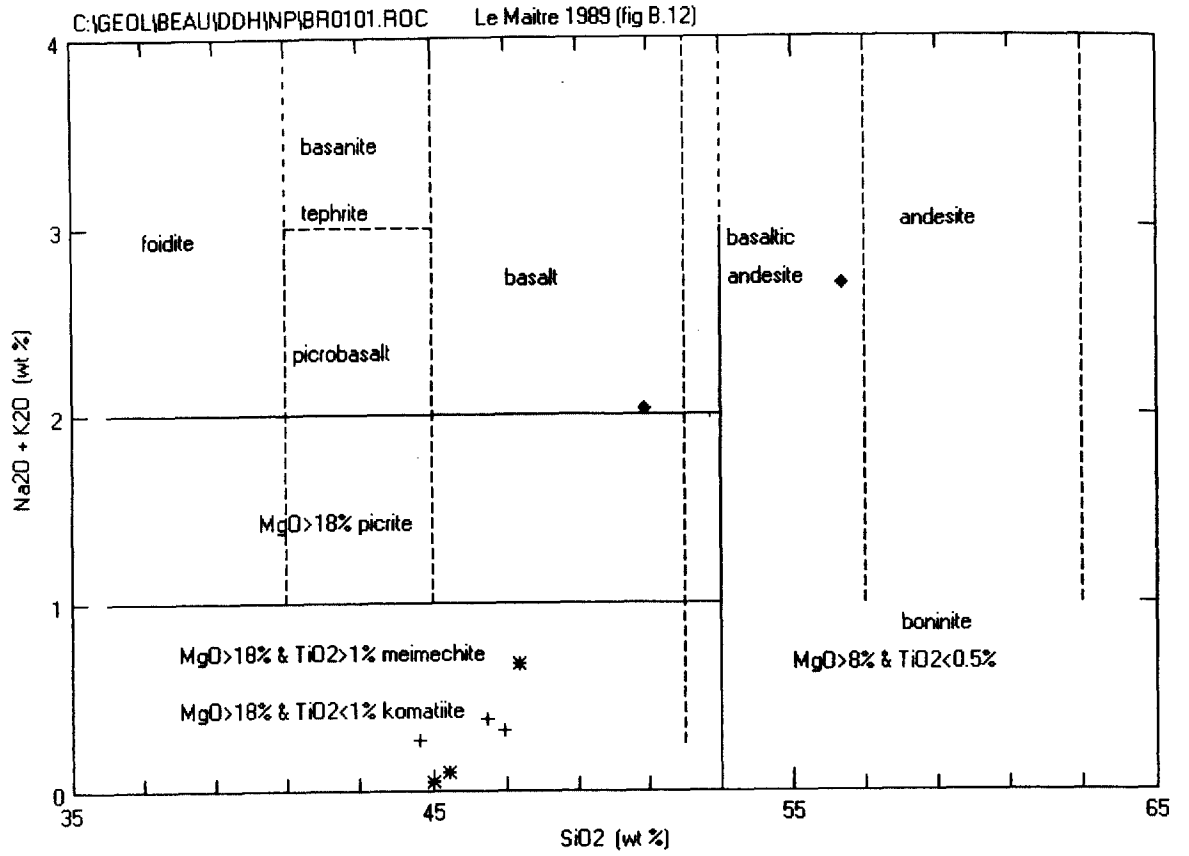
## 0.1 Log ppb Au Bins

Appendix D  
Drill Hole BR01-01  
Whole Rock Discrimination Plots

# Beauchastel-Rouyn

DDH BR01-01

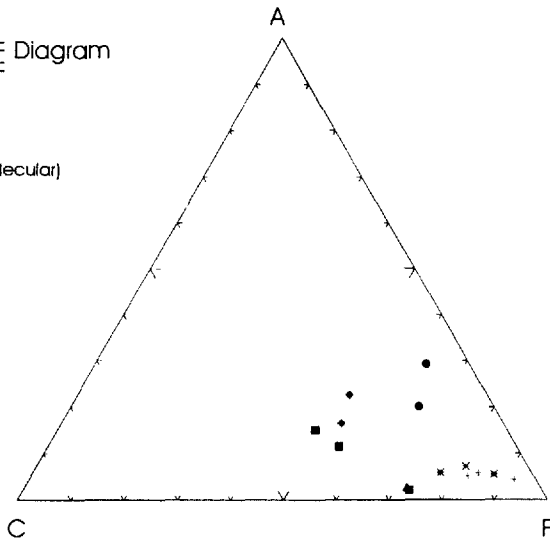




Beauchastel-Rouyn  
DDH BR01-01  
Discrimination Plots  
(Whole Rock)

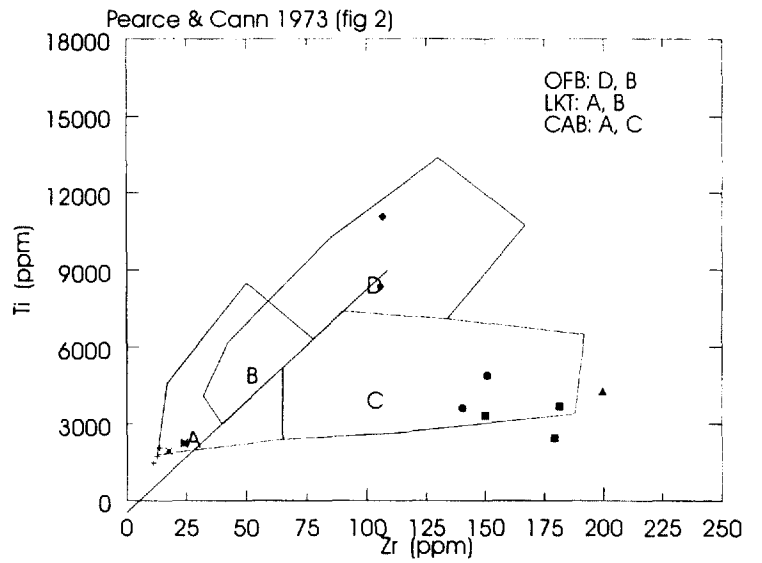
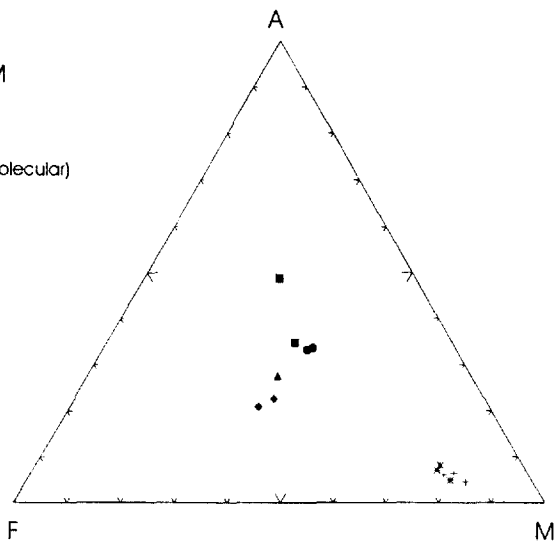
ACF Diagram  
ACF

(molecular)

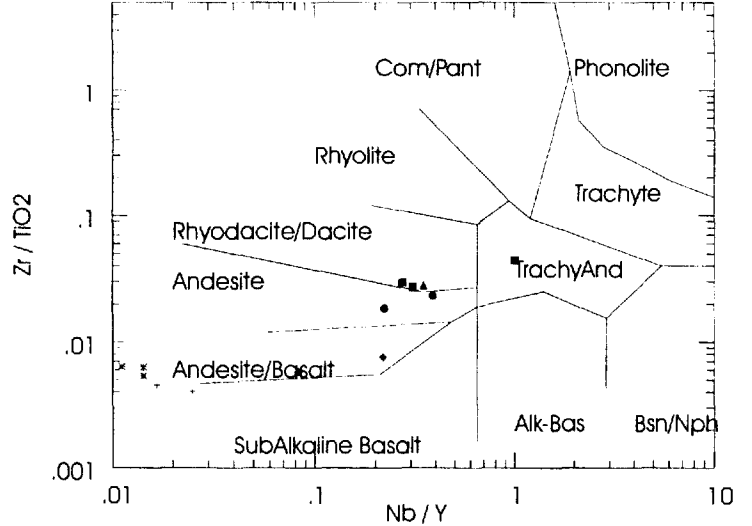


AFM

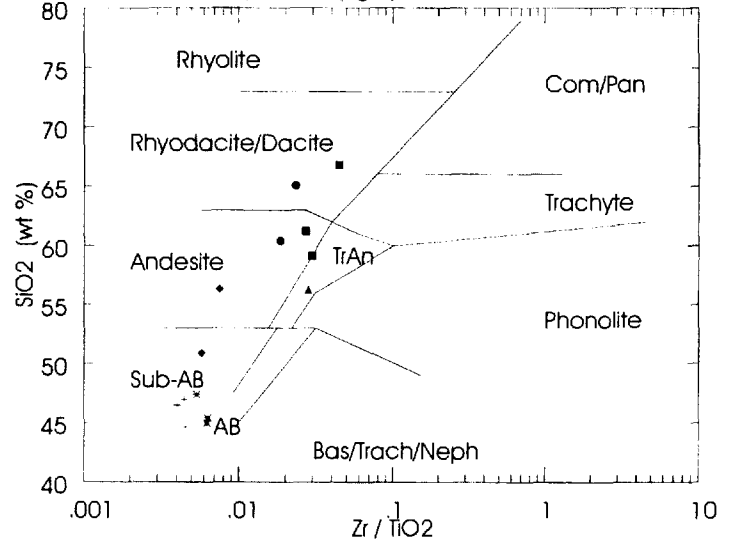
(molecular)



Winchester & Floyd 1977 (fig 6)



Winchester & Floyd 1977 (fig 2)



Beauchasrel-Rouyn  
DDH BR01-01  
Lithogeochemical  
Plot Legend

Rock Type:

- P1
- S4
- 1S
- ▲ 3L
- \* M1ic
- + V13
- ◆ V7
- ◆ V7p

Sample No.:

- 16601
- 16604
- 16608
- 12429
- 12000
- ▲ 16606
- \* 16612
- \* 16605
- \* 16611
- + 16607
- + 16609
- + 16610
- ◆ 16602
- ◆ 16603



Appendix E  
Drill Hole BR01-01  
Analytical "*Certificates of Analysis*"

O. 31/2001

**XRAL****LES LABORATOIRES XRAL LABORATORIES**

UNE DIVISION DE / A DIVISION OF SGS CANADA INC.  
 129 AVE. MARCEL BARIL • ROUYN-NORANDA • QUÉBEC J9X 7B9  
 TÉL.: (819) 764-9108 FAX: (819) 764-4673

## CERTIFICAT D'ANALYSE/CERTIFICATE OF ANALYSIS

R21111



Nom de la Compagnie/Company: Globex Mining Enterprises Inc.  
 Bon de Commande No/ P.O. No:  
 Projet/ Project No : Beauchastel  
 Date Soumis/ Submitted : Oct 23, 2001  
 Attention : Ray Zalnieriunas

Oct 30, 2001

No. D'Echantillon Sample No.	AU PPB	AU CHK PPB
---------------------------------	-----------	---------------

11830	6	8
11831	457	
11832	31	
11833	939	
11834	275	
11835	19	
11836	17	
11837	10	
11838	58	
11839	13	
11840	17	
11841	91	
11842	12	9
11843	8	
11844	6	
11845	4	

Certifie par / Certified by :


  
 Membre du Groupe SGS (Société Générale de Surveillance)

**XRAL**

OCT 31 2001

**LES LABORATOIRES XRAL LABORATORIES**UNE DIVISION DE / A DIVISION OF SGS CANADA INC.  
129 AVE. MARCEL BARIL • ROUYN-NORANDA • QUÉBEC J9X 7B9  
TÉL.: (819) 764-9108 FAX: (819) 764-4673

## CERTIFICAT D'ANALYSE/CERTIFICATE OF ANALYSIS

R21112

Nom de la Compagnie/Company: Globex Mining Enterprises Inc.

Bon de Commande No/ P.O. No:

Projet/ Project No : Beauchastel

Date Soumis/ Submitted : Oct 23, 2001

Oct 30, 2001

Attention : Ray Zalnieriunas

No. D'Echantillon Sample No.	AU PPB	AU CHK PPB
---------------------------------	-----------	---------------

11846	8	9
11847	16	
11848	8	
11849	4	
11850	7	
11851	8	
11852	4	
11853	4	
11854	3	
11855	3	
11856	3	
11857	17	

Certifie par / Certified by :



Membre du Groupe SGS (Société Générale de Surveillance)



**LES LABORATOIRES XRAL LABORATORIES**

UNE DIVISION DE / A DIVISION OF SGS CANADA INC.  
 129 AVE. MARCEL BARIL • ROUYN-NORANDA • QUÉBEC J9X 7B9  
 TÉL.: (819) 764-9108 FAX: (819) 764-4673

CERTIFICAT D'ANALYSE/CERTIFICATE OF ANALYSIS

R21113

Nom de la Compagnie/Company: Globex Mining Enterprises Inc.  
 Bon de Commande No/ P.O. No:  
 Projet/ Project No : Beauchastel  
 Date Soumis/ Submitted : Oct 23, 2001  
 Attention : Ray Zalnieriunas

Oct 30, 2001

---

No. D'Echantillon	AU	AU
Sample No.	PPB	CHK
		PPB

---

11858	6	9
11859	7	
11860	7	
11861	7	
11862	18	
11863	5	
11864	7	
11865	43	
11866	4	
11867	5	
11868	6	
11869	9	
11870	7	6
11871	4	
11872	5	
11873	6	
11874	8	

Certifie par / Certified by :

**SGS** Membre du Groupe SGS (Société Générale de Surveillance)


**LES LABORATOIRES XRAL LABORATORIES**

 UNE DIVISION DE / A DIVISION OF SGS CANADA INC.  
 129 AVE. MARCEL BARIL - ROUYN-NORANDA - QUÉBEC J9X 7B9  
 TÉL.: (819) 764-9108 FAX: (819) 764-4873

OCT 30 2001

## CERTIFICAT D'ANALYSE/CERTIFICATE OF ANALYSIS

R21067

Nom de la Compagnie/Company: Globex Mining Enterprises Inc.

Bon de Commande No/ P.O. No:

Projet/ Project No : Beauchastel

Date Soumis/ Submitted : Oct 18, 2001

Oct 24, 2001

Attention : Ray Zalnierunas

No. D'Echantillon Sample No.	AU PPB	AU CHK PPB
---------------------------------	-----------	---------------

11801	37	33
11802	20	
11803	47	
11804	21	
11805	17	
11806	4	
11807	15	
11808	15	
11809	62	
11810	264	
11811	104	
11812	151	
11813	169	163
11814	17	
11815	93	
11816	150	
11817	23	

Certifie par / Certified by :



Membre du Groupe SGS (Société Générale de Surveillance)



**LES LABORATOIRES XRAL LABORATORIES**

UNE DIVISION DE / A DIVISION OF SGS CANADA INC.  
 129 AVE. MARCEL BARIL • ROUYN-NORANDA • QUÉBEC J9X 7B9  
 TÉL.: (819) 764-9108 FAX: (819) 764-4673

CERTIFICAT D'ANALYSE/CERTIFICATE OF ANALYSIS

R21068

Nom de la Compagnie/Company: Globex Mining Enterprises Inc.  
 Bon de Commande No/ P.O. No:  
 Projet/ Project No : Beauchastel  
 Date Soumis/ Submitted : Oct 18, 2001  
 Attention : Ray Zalnierunas

Oct 24, 2001

No. D'Echantillon Sample No.	AU PPB	AU CHK PPB
---------------------------------	-----------	---------------

11818	21	26
11819	66	
11820	303	
11821	41	
11822	129	
11823	44	
11824	31	
11825	1	
11826	39	
11827	58	
11828	6	
11829	21	

Certifie par / Certified by :



Membre du Groupe SGS (Société Générale de Surveillance)


**LES LABORATOIRES XRAL LABORATORIES**

 UNE DIVISION DE / A DIVISION OF SGS CANADA INC.  
 129 AVE. MARCEL BARIL • ROUYN-NORANDA • QUÉBEC J9X 7B9  
 TÉL.: (819) 764-9108 FAX: (819) 764-4673

## CERTIFICAT D'ANALYSE/CERTIFICATE OF ANALYSIS

R21157

Nom de la Compagnie/Company: Globex Mining Enterprises Inc.  
 Bon de Commande No/ P.O. No:  
 Projet/ Project No : Beauchastel  
 Date Soumis/ Submitted : Oct 26, 2001  
 Attention : Ray Zalnierunas

Nov 02, 2001

No. D'Echantillon Sample No.	AU PPB	AU CHK PPB
---------------------------------	-----------	---------------

11875	4	5
11876	12	
11877	6	
11878	7	
11879	7	
11880	6	
11881	9	
11882	47	
11883	9	
11884	6	
11885	7	
11886	5	
11887	12	15
11888	6	

Certifie par / Certified by :



Membre du Groupe SGS (Société Générale de Surveillance)


**LES LABORATOIRES XRAL LABORATORIES**

 UNE DIVISION DE / A DIVISION OF SGS CANADA INC.  
 129 AVE. MARCEL BARIL • ROUYN-NORANDA • QUÉBEC J9X 7B9  
 TÉL.: (819) 764-9108 FAX: (819) 764-4673

## CERTIFICAT D'ANALYSE/CERTIFICATE OF ANALYSIS

R21158



Nom de la Compagnie/Company: Globex Mining Enterprises Inc.  
 Bon de Commande No/ P.O. No:  
 Projet/ Project No : Beauchastel  
 Date Soumis/ Submitted : Oct 26, 2001  
 Attention : Ray Zalnierunas

Nov 02, 2001

No. D'Echantillon Sample No.	AU PPB	AU CHK PPB
---------------------------------	-----------	---------------

11889	4	6
11890	7	
11891	5	
11892	9	
11893	7	
11894	11	
11895	9	
11896	8	
11897	6	

Certifie par / Certified by :


  

 Membre du Groupe SGS (Société Générale de Surveillance)




**LES LABORATOIRES XRAL LABORATORIES**

 UNE DIVISION DE / A DIVISION OF SGS CANADA INC.  
 129 AVE. MARCEL BARIL • ROUYN-NORANDA • QUÉBEC J9X 7B9  
 TÉL.: (819) 764-9108 FAX: (819) 764-4673

## CERTIFICAT D'ANALYSE/CERTIFICATE OF ANALYSIS

R21159

Nom de la Compagnie/Company: Globex Mining Enterprises Inc.  
 Bon de Commande No/ P.O. No:  
 Projet/ Project No : Beauchastel  
 Date Soumis/ Submitted : Oct 26, 2001  
 Attention : Ray Zalnierunas

Nov 03, 2001

No. D'Echantillon Sample No.	AU PPB	AU CHK PPB	AU CHK G/T	AU CHK G/T
11898	47	53		
11899	5			
11900	13			
11901	19			
11902	8			
11903	18			
11904	>1000		3.12	3.33
11905	>1000		1.20	1.37
11906	227	215		
11907	19			
11908	10			
11909	9			

Certifie par / Certified by :



Membre du Groupe SGS (Société Générale de Surveillance)


**LES LABORATOIRES XRAL LABORATORIES**

 UNE DIVISION DE / A DIVISION OF SGS CANADA INC.  
 129 AVE. MARCEL BARIL • ROUYN-NORANDA • QUÉBEC J9X 7B9  
 TÉL.: (819) 764-9108 FAX: (819) 764-4673

## CERTIFICAT D'ANALYSE/CERTIFICATE OF ANALYSIS

R21160



Nom de la Compagnie/Company: Globex Mining Enterprises Inc.  
 Bon de Commande No/ P.O. No:  
 Projet/ Project No : Beauchastel  
 Date Soumis/ Submitted : Oct 26, 2001  
 Attention : Ray Zalnieriunas

Nov 02, 2001

No. D'Echantillon Sample No.	AU PPB	AU CHK PPB
---------------------------------	-----------	---------------

11910	8	6
11911	4	
11912	1	
11913	3	
11914	7	
11915	9	
11916	24	
11917	15	
11918	16	
11919	12	
11920	31	

Certifie par / Certified by :


  

 Membre du Groupe SGS (Société Générale de Surveillance)


**LES LABORATOIRES XRAL LABORATORIES**

 UNE DIVISION DE / A DIVISION OF SGS CANADA INC.  
 129 AVE. MARCEL BARIL • ROUYN-NORANDA • QUÉBEC J9X 7B9  
 TÉL.: (819) 764-9108 FAX: (819) 764-4673

## CERTIFICAT D'ANALYSE/CERTIFICATE OF ANALYSIS

R21180

Nom de la Compagnie/Company: Globex Mining Enterprises Inc.  
 Bon de Commande No/ P.O. No:  
 Projet/ Project No : Beauchastel  
 Date Soumis/ Submitted : Oct 29, 2001  
 Attention : Ray Zalnieriunas

Nov 03, 2001

No. D'Echantillon Sample No.	AU PB	AU CHK PPB
---------------------------------	----------	---------------

11921	165	181
11922	55	
11923	316	
11924	29	
11925	958	
11926	42	
11927	14	
11928	21	
11929	57	
11930	311	
11931	64	

Certifie par / Certified by :



Membre du Groupe SGS (Société Générale de Surveillance)


**LES LABORATOIRES XRAL LABORATORIES**

 UNE DIVISION DE / A DIVISION OF SGS CANADA INC.  
 129 AVE. MARCEL BARIL • ROUYN-NORANDA • QUÉBEC J9X 7B9  
 TÉL.: (819) 764-9108 FAX: (819) 764-4673

## CERTIFICAT D'ANALYSE/CERTIFICATE OF ANALYSIS

R21181

Nom de la Compagnie/Company: Globex Mining Enterprises Inc.  
 Bon de Commande No/ P.O. No:  
 Projet/ Project No : Beauchastel  
 Date Soumis/ Submitted : Oct 29, 2001  
 Attention : Ray Zalnierunas

Nov 06, 2001

No. D'Echantillon Sample No.	AU PPB	AU CHK PPB
---------------------------------	-----------	---------------

11932	6	5
11933	16	
11934	11	
11935	1	
11936	3	
11937	49	
11938	3	
11939	2	
11940	19	

Certifie par / Certified by



Membre du Groupe SGS (Société Générale de Surveillance)


**LES LABORATOIRES XRAL LABORATORIES**

 UNE DIVISION DE / A DIVISION OF SGS CANADA INC.  
 129 AVE. MARCEL BARIL • ROUYN-NORANDA • QUÉBEC J9X 7B9  
 TÉL.: (819) 764-9108 FAX: (819) 764-4673

## CERTIFICAT D'ANALYSE/CERTIFICATE OF ANALYSIS

R21196

Nom de la Compagnie/Company: Globex Mining Enterprises Inc.  
 Bon de Commande No/ P.O. No:  
 Projet/ Project No : Beauchastel  
 Date Soumis/ Submitted : Oct 31, 2001  
 Attention : Ray Zalnierunas

Nov 06, 2001

No. D'Echantillon Sample No.	AU PPB	AU CHK PPB
---------------------------------	-----------	---------------

11941	13	18
11942	18	
11943	11	
11944	10	
11945	5	
11946	<1	
11947	<1	
11948	4	
11949	24	
11950	65	

Certifie par / Certified by



Membre du Groupe SGS (Société Générale de Surveillance)


**LES LABORATOIRES XRAL LABORATORIES**

 UNE DIVISION DE / A DIVISION OF SGS CANADA INC.  
 129 AVE. MARCEL BARIL • ROUYN-NORANDA • QUÉBEC J9X 7B9  
 TÉL.: (819) 764-9108 FAX: (819) 764-4673

## CERTIFICAT D'ANALYSE/CERTIFICATE OF ANALYSIS

R21214

Nom de la Compagnie/Company: Globex Mining Enterprises Inc.  
 Bon de Commande No/ P.O. No:  
 Projet/ Project No : Beauchastel  
 Date Soumis/ Submitted : Nov 01, 2001  
 Attention : Ray Zalnierunas

Nov 09, 2001

No. D'Echantillon Sample No.	AU PPB	AU CHK PPB
---------------------------------	-----------	---------------

11951	15	17
11952	32	
11953	2	
11954	7	
11955	4	
11956	4	
11957	4	
11958	2	
11959	8	
11960	2	
11961	<1	
11962	1	

Certifie par / Certified by :



Membre du Groupe SGS (Société Générale de Surveillance)


**LES LABORATOIRES XRAL LABORATORIES**

 UNE DIVISION DE / A DIVISION OF SGS CANADA INC.  
 129 AVE. MARCEL BARIL • ROUYN-NORANDA • QUÉBEC J9X 7B9  
 TÉL.: (819) 764-9108 FAX: (819) 764-4673

## CERTIFICAT D'ANALYSE/CERTIFICATE OF ANALYSIS

R21215

Nom de la Compagnie/Company: Globex Mining Enterprises Inc.  
 Bon de Commande No/ P.O. No:  
 Projet/ Project No : Beauchastel  
 Date Soumis/ Submitted : Nov 01, 2001  
 Attention : Ray Zalnieriunas

Nov 09, 2001

No. D'Echantillon Sample No.	AU PPB	AU CHK PPB
---------------------------------	-----------	---------------

11963	2	3
11964	4	
11965	5	
11966	5	
11967	3	
11968	2	
11969	17	
11970	4	
11971	2	
11972	3	
11973	<1	
11974	3	
11975	3	4

Certifie par / Certified by :



Membre du Groupe SGS (Société Générale de Surveillance)


**LES LABORATOIRES XRAL LABORATORIES**

 UNE DIVISION DE / A DIVISION OF SGS CANADA INC.  
 129 AVE. MARCEL BARIL • ROUYN-NORANDA • QUÉBEC J9X 7B9  
 TÉL.: (819) 764-9108 FAX: (819) 764-4673

## CERTIFICAT D'ANALYSE/CERTIFICATE OF ANALYSIS

R21216

Nom de la Compagnie/Company: Globex Mining Enterprises Inc.

Bon de Commande No/ P.O. No:

Projet/ Project No : Beauchastel

Date Soumis/ Submitted : Nov 01, 2001

Nov 09, 2001

Attention : Ray Zalnieriunas

No. D'Echantillon Sample No.	AU PPB	AU CHK PPB
---------------------------------	-----------	---------------

11976	3	2
11977	4	
11978	4	
11979	4	
11980	2	
11981	3	
11982	2	
11983	3	
11984	6	
11985	5	
11986	7	
11987	15	
11988	12	13

Certifie par / Certified by :



Membre du Groupe SGS (Société Générale de Surveillance)




**LES LABORATOIRES XRAL LABORATORIES**

 UNE DIVISION DE / A DIVISION OF SGS CANADA INC.  
 129 AVE. MARCEL BARIL • ROUYN-NORANDA • QUÉBEC J9X 7B9  
 TÉL.: (819) 764-9108 FAX: (819) 764-4673

## CERTIFICAT D'ANALYSE/CERTIFICATE OF ANALYSIS

R21217

Nom de la Compagnie/Company: Globex Mining Enterprises Inc.

Bon de Commande No/ P.O. No:

Projet/ Project No : Beauchastel

Date Soumis/ Submitted : Nov 01, 2001

Nov 10, 2001

Attention : Ray Zalnierunas

No. D'Echantillon	AU	AU CHK
Sample No.	PB	PPB

11989	19	17
11990	6	
11991	2	
11992	8	
11993	9	
11994	29	
11995	26	
11996	8	
11997	29	
11998	41	
11999	62	
12000	63	
12400	36	39
12401	67	

*?? internal assay standard ??*

Certifie par / Certified by :



Membre du Groupe SGS (Société Générale de Surveillance)


**LES LABORATOIRES XRAL LABORATORIES**

 UNE DIVISION DE / A DIVISION OF SGS CANADA INC.  
 129 AVE. MARCEL BARIL • ROUYN-NORANDA • QUÉBEC J9X 7B9  
 TÉL.: (819) 764-9108 FAX: (819) 764-4673

## CERTIFICAT D'ANALYSE/CERTIFICATE OF ANALYSIS

R21218

Nom de la Compagnie/Company: Globex Mining Enterprises Inc.

Bon de Commande No/ P.O. No:

Projet/ Project No : Beauchastel

Date Soumis/ Submitted : Nov 01, 2001

Nov 10, 2001

Attention : Ray Zalnieriunas

No. D'Echantillon	AU	AU CHK
Sample No.	PPB	PPB

12402	19	22
12403	8	
12404	15	
12405	9	
12406	13	
12407	12	
12408	6	
12409	8	

Certifie par / Certified by :



Membre du Groupe SGS (Société Générale de Surveillance)


**LES LABORATOIRES XRAL LABORATORIES**

 UNE DIVISION DE / A DIVISION OF SGS CANADA INC.  
 129 AVE. MARCEL BARIL • ROUYN-NORANDA • QUÉBEC J9X 7B9  
 TÉL.: (819) 764-9108 FAX: (819) 764-4673

## CERTIFICAT D'ANALYSE/CERTIFICATE OF ANALYSIS

R21259

Nom de la Compagnie/Company: Globex Mining Enterprises Inc.

Bon de Commande No/ P.O. No:

Projet/ Project No : Beauchastel

Date Soumis/ Submitted : Nov 06, 2001

Nov 15, 2001

Attention : Ray Zalnieriunas

No. D'Echantillon	AU	AU CHK
Sample No.	PPB	PPB

12410	1	<1
12411	<1	
12412	<1	
12413	2	
12414	26	
12415	3	
12416	15	
12417	<1	
12418	<1	
12419	17	

Certifie par / Certified by :



Membre du Groupe SGS (Société Générale de Surveillance)


**LES LABORATOIRES XRAL LABORATORIES**

 UNE DIVISION DE / A DIVISION OF SGS CANADA INC.  
 129 AVE. MARCEL BARIL • ROUYN-NORANDA • QUÉBEC J9X 7B9  
 TÉL.: (819) 764-9108 FAX: (819) 764-4673

## CERTIFICAT D'ANALYSE/CERTIFICATE OF ANALYSIS

R21260

Nom de la Compagnie/Company: Globex Mining Enterprises Inc.  
 Bon de Commande No/ P.O. No:  
 Projet/ Project No : Beauchastel  
 Date Soumis/ Submitted : Nov 06, 2001  
 Attention : Ray Zalnieriunas

Nov 15, 2001

No. D'Echantillon	AU	AU CHK
Sample No.	PB	PPB

12420	178	206
12421	47	
12422	351	
12423	148	
12424	268	
12425	25	
12426	7	
12427	271	
12428	21	
12429	98	
12430	6	

Certifie par / Certified by :



Membre du Groupe SGS (Société Générale de Surveillance)


**LES LABORATOIRES XRAL LABORATORIES**

 UNE DIVISION DE / A DIVISION OF SGS CANADA INC.  
 129 AVE. MARCEL BARIL • ROUYN-NORANDA • QUÉBEC J9X 7B9  
 TÉL.: (819) 764-9108 FAX: (819) 764-4673

## CERTIFICAT D'ANALYSE/CERTIFICATE OF ANALYSIS

R21261

Nom de la Compagnie/Company: Globex Mining Enterprises Inc.  
 Bon de Commande No/ P.O. No:  
 Projet/ Project No : Beauchastel  
 Date Soumis/ Submitted : Nov 06, 2001  
 Attention : Ray Zalnieriunas

Nov 15, 2001

No. D'Echantillon Sample No.	AU PPB	AU CHK PPB
---------------------------------	-----------	---------------

12431	14	18
12432	17	
12433	92	
12434	10	
12435	<1	
12436	<1	
12437	<1	
12438	<1	
12439	2	
12440	<1	
12441	<1	

Certifie par / Certified by :



Membre du Groupe SGS (Société Générale de Surveillance)

**XRAL**

**Les Laboratoires XRAL Laboratories**  
 Une Division de / A Division of **SGS Canada Inc.**  
 129 Ave. Marcel Baril, Rouyn-Noranda, Québec J9X 7B9  
 Téléphone: (819) 764-9108 Télécopieur: (819) 764-4673

Projet/Project : **Beauchastel**  
 Notre Référence/Work Order : **R21588**  
 Date : **21/12/01**  
 Page : **1 of 1**  
 Final

Element.	Au	Ag	Cu	Zn	Pb	Ni
Method/Method.	FA301	AA70	AA70	AA70	AA70	AA70
Det.Lim.	1	0.2	2	2	2	2
Measure/Units.	ppb	ppm	ppm	ppm	ppm	ppm
16601	8	0.6	9	69	16	80
16602	14	0.8	26	85	17	77
16603	4	0.8	98	58	20	83
16604	4	<0.2	39	91	35	83
16605	<1	0.4	44	23	11	320
16606	<1	0.8	32	34	15	32
16607	1	0.6	27	23	13	718
16608	<1	<0.2	36	61	19	42
16609	<1	0.8	39	22	11	940
16610	<1	0.4	12	31	16	1370
16611	<1	0.4	33	25	9	546
16612	50	0.8	42	22	11	207
12000	60	0.8	12	54	14	93
12429	78	0.4	4	57	9	32
*Dup 16601	10	0.6	7	71	17	84
*Dup 12000	67	0.8	11	55	16	89

JAN 23 2002



**Les Laboratoires XRAL Laboratories**  
Une Division de / A Division of SGS Canada Inc.

129 Ave. Marcel Baril  
Rouyn-Noranda, Québec  
Canada J9X 7B9  
Téléphone (819) 764-9108  
Télécopieur (819) 764-4673

Your reference: Beauchastel

Our reference: 66717/R21588

**CERTIFICAT D'ANALYSE/ASSAY CERTIFICATE**

January 11, 2002

**GLOBEX MINING ENTERPRISES INC.**  
**146, 14EME RUE**  
**ROUYN-NORANDA, QC**  
**J9X 2J3**

**ATTN: Jack Stoch**

Date soumis/Submitted: Dec 14, 2001

No of samples: 14

No. of pages: 3

**ELEMENTS**

**METHOD**

**DETECTION LIMIT**

Whole rock analysis

XRF-103

Certifié par/Certified by:

J.J. Landers Gérant/Manager



XRAL Laboratories  
A Division of SGS Canada Inc.

Work Order: 056717

Date: 11/01/02

FINAL

Page 1 of 2

Element, Method, Det.Lim. Units.	SiO2 XRF103 0.01 %	Al2O3 XRF103 0.01 %	CaO XRF103 0.01 %	MgO XRF103 0.01 %	Na2O XRF103 0.01 %	K2O XRF103 0.01 %	Fe2O3 XRF103 0.01 %	MnO XRF103 0.01 %	TiO2 XRF103 0.001 %	P2O5 XRF103 0.01 %	Cr2O3 XRF103 0.01 %	LOI XRF103 0.01 %	Sum XRF103 0.01 %	R5 XRF103 2 ppm
*Std XRAL04	48.7	14.7	10.9	11.6	1.35	0.42	9.17	0.16	0.373	0.03	0.06	2.40	99.9	11
16601	57.7	15.0	3.26	5.79	3.99	0.75	7.89	0.10	0.778	0.24	0.03	4.70	100.2	21
16602	51.2	13.8	7.16	4.73	0.43	2.02	9.93	0.10	1.266	0.20	0.02	7.90	98.8	72
16603	43.9	11.4	9.48	5.15	0.63	1.13	12.6	0.24	1.597	0.14	<0.01	13.9	100.2	38
16604	63.0	16.2	1.47	3.86	3.45	2.39	5.61	0.06	0.583	0.19	0.03	3.00	100.0	75
16605	40.2	6.95	5.97	24.8	0.02	0.07	9.97	0.16	0.329	0.02	0.31	11.3	100.1	2
16606	54.1	14.4	4.86	4.12	6.94	1.96	8.38	0.11	0.685	0.60	>0.01	1.80	98.3	71
16607	43.5	6.16	5.30	27.5	0.12	0.18	9.45	0.16	0.268	0.01	0.28	7.15	100.0	8
16608	57.7	14.1	4.51	4.26	7.48	1.08	7.14	0.12	0.600	0.56	0.01	0.80	98.6	27
16609	43.4	5.62	6.58	26.3	0.21	0.15	10.6	0.16	0.322	0.02	0.36	6.55	100.2	7
16610	39.9	4.82	2.27	32.2	0.12	0.12	9.59	0.17	0.219	>0.01	0.30	10.6	100.3	7
16611	43.1	5.90	3.70	27.0	0.10	0.52	10.2	0.11	0.297	>0.01	0.35	9.05	100.4	35
16612	39.3	5.60	8.76	23.1	<0.01	0.04	10.0	0.18	0.332	0.02	0.33	12.8	100.5	>2
12000	55.9	13.1	5.67	3.82	3.31	4.06	4.53	0.07	0.506	0.35	0.02	7.30	98.9	68
12429	64.0	14.7	3.58	1.60	5.98	2.14	3.21	0.04	0.389	0.17	>0.01	2.95	99.2	46
*Dup 16601	57.7	14.9	3.27	5.80	4.00	0.75	7.87	0.10	0.779	0.24	0.03	4.70	100.2	21
*Dup 12000	55.8	13.1	5.67	3.80	3.31	4.07	4.51	0.07	0.507	0.35	0.02	7.25	98.7	68





XRAL Laboratories  
A Division of SGS Canada Inc.

Work Order: C66717

Date: 11/01/02

FINAL

Page 2 of 2

Element.	Sr	Y	Zr	Nb	Ba
Method.	XRF103	XRF103	XRF103	XRF103	XRF103
Det.Lim.	2	2	2	2	20
Units.	ppm	ppm	ppm	ppm	ppm
*Std XRAL04	102	9	27	<2	85
16601	111	27	144	6	148
16602	50	23	96	5	282
16603	118	36	92	3	296
16604	257	18	136	7	878
16605	334	9	21	<2	29
16606	1030	23	192	8	1800
16607	59	10	12	<2	35
16608	674	22	177	6	782
16609	78	4	13	<2	29
16610	109	6	10	<2	42
16611	148	7	16	<2	22
16612	236	7	21	<2	20
12000	532	13	137	4	1520
12429	1170	7	172	7	2350
*Dup 16601	113	26	143	6	147
*Dup 12000	534	13	137	4	1530

JAN 23 2002



**Les Laboratoires XRAL Laboratories**  
Une Division de / A Division of SGS Canada Inc.

128 Ave. Marcel Baril  
Rouyn-Noranda, Québec  
Canada J9X 7B9  
Téléphone (819) 764-9108  
Fax (819) 764-4673

**From:** JOE LANDERS  
OPERATIONS MANAGER

**To:** SAMPLE PREPARATION  
XRAL ROUYN-NORANDA

**Date:** August 12, 1999

**Copies:**

**Subject:** QUALITY ASSURANCE IN SAMPLE PREPARATION

### MEMO

IN SAMPLE PREPARATION, THE FOLLOWING PROCEDURES WILL BE FOLLOWED:

UPON RECEIPT, THE SAMPLES WILL BE UNPACKED AND ARRANGED IN NUMERICAL ORDER. THE SAMPLES RECEIVED WILL BE COMPARED TO THE CLIENTS SAMPLE SUBMITTAL FORM. ALL DISCREPENCIES WILL BE NOTED ON THE SAMPLE SUBMITTAL FORM AND A SUPERVISOR WILL BE INFORMED. IF NO SAMPLE SUBMITTAL FORM HAS BEEN ENCLOSED, ONE WILL BE PREPARED AT THIS TIME AND A COPY FAXED TO THE CLIENT. THE SAMPLES WILL THEN BE ENTERED INTO OUR COMPUTER SYSTEM AND THE REQUIRED SAMPLE LABELS AND WORKSHEETS PREPARED. UNDER NO CIRCUMSTANCES WILL PREP BEGIN BEFORE THIS PROCEDURE IS FOLLOWED.

A COPY OF THE SAMPLE SUBMITTAL FORM WILL BE GIVEN TO THE PULP WEIGHERS AT THIS TIME AS WELL.

BEFORE THE FIRST SAMPLE IS CRUSHED, THE CRUSHERS WILL BE CLEANED WITH SUITABLE MATERIAL.

WHEN THE FIRST SAMPLE IS CRUSHED, A SPLIT WILL BE SCREENED THROUGH EITHER A 10 OR 24 MESH SCREEN TO DETERMINE THAT 90% WILL PASS THE REQUIRED MESH. THESE TESTS WILL BE RECORDED IN THE LOG PROVIDED. IF 90% DOES NOT PASS, THE CRUSHERS WILL BE ADJUSTED AND SCREEN TESTS REPEATED UNTIL 90% PASSES THE REQUIRED MESH. AT THIS TIME, ALL CLIENTS REQUIRE 90% PASSING 10 MESH.

CRUSHER REJECTS WILL BE STORED IN BOXES PROVIDED FOR THIS PURPOSE. THE CUSTOMER NAME, PROJECT, FILE NUMBER AND SAMPLE NUMBERS MUST APPEAR ON ALL BOXES AND THIS INFORMATION MUST BE READABLE. DO NOT MIX PROJECTS.

CRUSHING EQUIPMENT MUST BE CLEANED WITH AIR AND OR BRUSH BETWEEN SAMPLES. THE RIFFLE MUST ALSO BE CLEANED BETWEEN SAMPLES.

ALL EQUIPMENT PROBLEMS MUST BE REPORTED TO A SUPERVISOR IMMEDIATELY. THESE INCLUDE HOLES IN SAMPLE PANS AND RIFFLES THAT REQUIRE REPAIRS.

THE PERSON CRUSHING AND SPLITTING WILL RECORD THEIR NAME AND JOB PERFORMED ON THE SAMPLE SUBMITTAL FORM. THEIR NAME WILL BE READABLE.

PULVERIZERS WILL BE CLEANED WITH SILICA SAND BEFORE EACH SAMPLE BATCH. BETWEEN SAMPLES, THE PULVERIZER WILL BE CLEANED WITH AIR OR VACUUM.

AFTER PULVERIZING THE FIRST SAMPLE OF A BATCH, A SCREEN TEST WILL BE DONE TO ENSURE THAT 90% PASSES 200 MESH. TIME WILL BE INCREASED AND SCREEN TESTS DONE UNTIL 80% PASSES 200 MESH. THIS IS FOR ALL CLIENTS.

SAMPLES WILL ALWAYS BE PULVERIZED IN NUMERICAL ORDER AND PLACED IN THE TRAYS PROVIDED IN NUMERICAL ORDER.

WHEN A TRAY OF SAMPLES IS COMPLETED, THE TRAY WILL BE PLACED ON THE RACK PROVIDED. THESE TRAYS MUST BE KEPT IN NUMERICAL ORDER IN THIS RACK.

IF YOU SUSPECT A SAMPLE MIX-UP OR ANY OTHER PROBLEM CONSULT A SUPERVISOR IMMEDIATELY.

WHEN SCREENING METALLICS, ENSURE THAT YOU HAVE THE PROPER SCREENS( 100,140 OR 200 MESH) NOTE THIS ON THE BAG CONTAINING THE + PORTION.

THE PERSON PULVERIZING WILL ALSO ENTER ALL SCREEN TEST RESULTS IN THE LOG PROVIDED FOR THIS PURPOSE. THE INFORMATION REQUIRED IS DATE, CLIENT, FILE NUMBER AND TEST WEIGHTS.

THE PERSON PULVERIZING WILL ALSO RECORD THEIR NAME AND JOB PERFORMED ON THE SAMPLE SUBMITTAL FORM. THEIR NAME WILL BE READABLE.

THE SUPERVISOR WILL COLLECT ALL COMPLETED SAMPLE SUBMITTAL FORMS AND FORWARD THEM TO THE OFFICE FOR FILING WITH THE COMPLETED FILE NUMBER.



**Les Laboratoires XRAL Laboratories**  
Une Division de / A Division of SGS Canada Inc.

129 Ave. Marcel Baril  
Rouyn-Noranda, Québec  
Canada J9X 7B9  
Telephone (819) 764-9108  
Télécopieur (819) 764-4873

## METHOD NUMBER 3- GOLD

Source of method: Xral Laboratories

Method code: FA301

---

### SUMMARY

Gold is determined in geological materials by DCP after collection by fire assay. An assay fusion consists of heating a mixture of the finely pulverized sample with about three parts of a flux until the product is molten. One of the ingredients of the flux is a lead compound, which is reduced by other constituents of the flux or sample to metallic lead. The latter collects all the gold, together with silver, platinum metals and small quantities of certain base metals in the sample, and falls to the bottom of the crucible to form a lead button. The gangue of the ore is converted by the flux into a slag sufficiently fluid so that all particles of lead may fall readily through the molten mass. The choice of a suitable flux depends on the character of the ore. The lead button is cupelled to oxidize the lead leaving behind a dore bead containing the precious metals. The dore bead is then transferred to a test tube, dissolved with aqua regia, diluted to a specific volume and gold content determined by DCP.

This method is applicable to a wide variety of geological materials. However, heterogeneous distribution of gold in the sample may result in pronounced imprecision due to sampling error.

The lower reporting unit for 30-gram samples is 1 PPB by DCP. The upper reporting limit is 10,000 PPB by DCP. A gravimetric assay is recommended for values exceeding 1000 PPB.

# **XRAL**

## **APPARATUS**

- 30 gram crucible
- Balance capable of weighing to 0.01 gram
- Furnace capable of 1100 C
- # 6 cupel
- 12 x 75 test tubes
- Dispensers capable of an accuracy of 1% and 0.5% precision
- Spectrospan V or similar DCP

## **REAGENTS**

- Gold free litharge
- Soda ash
- Borax
- Silica flour
- Flour
- Silver nitrate
- Nitric acid
- Hydrochloric acid
- Distilled water

## **PREPARATION OF STANDARDS**

A series of standards are prepared by serial dilution of a 1000 PPM certified gold solution to cover a range from 0 to 10,000 PPB gold.

## **PROCEDURE**

1. Add 150 grams of flux to a 30-gram crucible.
2. Weigh 30.0 grams of prepared sample into the crucible.
3. Mix the sample and flux together.
4. Tap the crucible to expel air.
5. Add 1 mg of silver nitrate to the crucible.
6. Cover with borax.
7. Place crucible in the furnace for 45 minutes at a temperature of 1080 C. Pour into a cast iron mold and allow to cool. Hammer the lead button free of slag.
8. Place the lead button in a pre-heated cupel.
9. Place the cupel in the furnace at 950-1000 C until all lead is removed. Remove from furnace and allow to cool.
10. Place the dore bead in a 12 x 75-mm test tube; add 0.2 ml of 1:1 nitric acid and place in a hot water bath for 30 minutes. Add 0.3 ml of hydrochloric acid and return to the hot water bath for 60 minutes. Remove from the water bath, allow to cool and bring to final volume of 5.0 ml with distilled water.



**Les Laboratoires XRAL Laboratories**  
Une Division de / A Division of SGS Canada Inc.  
129 Ave. Marcel Baril, Rouyn-Noranda, Québec J9X 7B9  
Téléphone: (819) 764-9108 Télécopieur: (819) 764-4673

## CERTIFICAT D'ANALYSE/CERTIFICATE OF ANALYSIS

A/To: **Globex Mining Enterprises Inc.**  
146, 14eme Rue  
Rouyn-Noranda  
QUEBEC  
J9X 2J3  
Canada  
Attn: Jack Stoch

---

Notre Référence / Work Order	: R21588
Projet / Project	: Beauchastel
No de Bon de Commande / P.O. No	:
Nombre d'échantillons / Number of samples	: 14
Rapport inclus / Report comprising	: Page couverture/Cover sheet, Pages 1 à/to 0
Reçu le / Date Received	: 14/12/01
Transmis le / Date Reported	: 21/12/01

### Répartition du matériel inutilisé / Distribution of unused material

Pulpes / Pulps	: Stored for a maximum of 90 days
Rejets / Rejects	: Stored for a maximum of 90 days

### Commentaires / Comments

Certifié par/Certified By \_\_\_\_\_  
Les Laboratoires XRAL Laboratories

---

L.N.R. = Échantillon non reçu / Listed not received  
n.a. = Non applicable / Not applicable  
I.S. = Quantité insuffisante / Insufficient Sample  
.. = Aucun résultat / No result  
\*INF = La composition de cet échantillon rend la détection impossible par cette méthode /  
Composition of this sample makes detection impossible by this method  
M après un échantillon signifie une conversion de ppb à ppm et %, une conversion de ppm à %  
M after a result denotes ppb to ppm conversion, % denotes ppm to % conversion

---

Sujet aux termes et conditions de SGS / Subject to SGS General Terms and Conditions

**SGS** Member of the SGS Group (Société Générale de Surveillance)