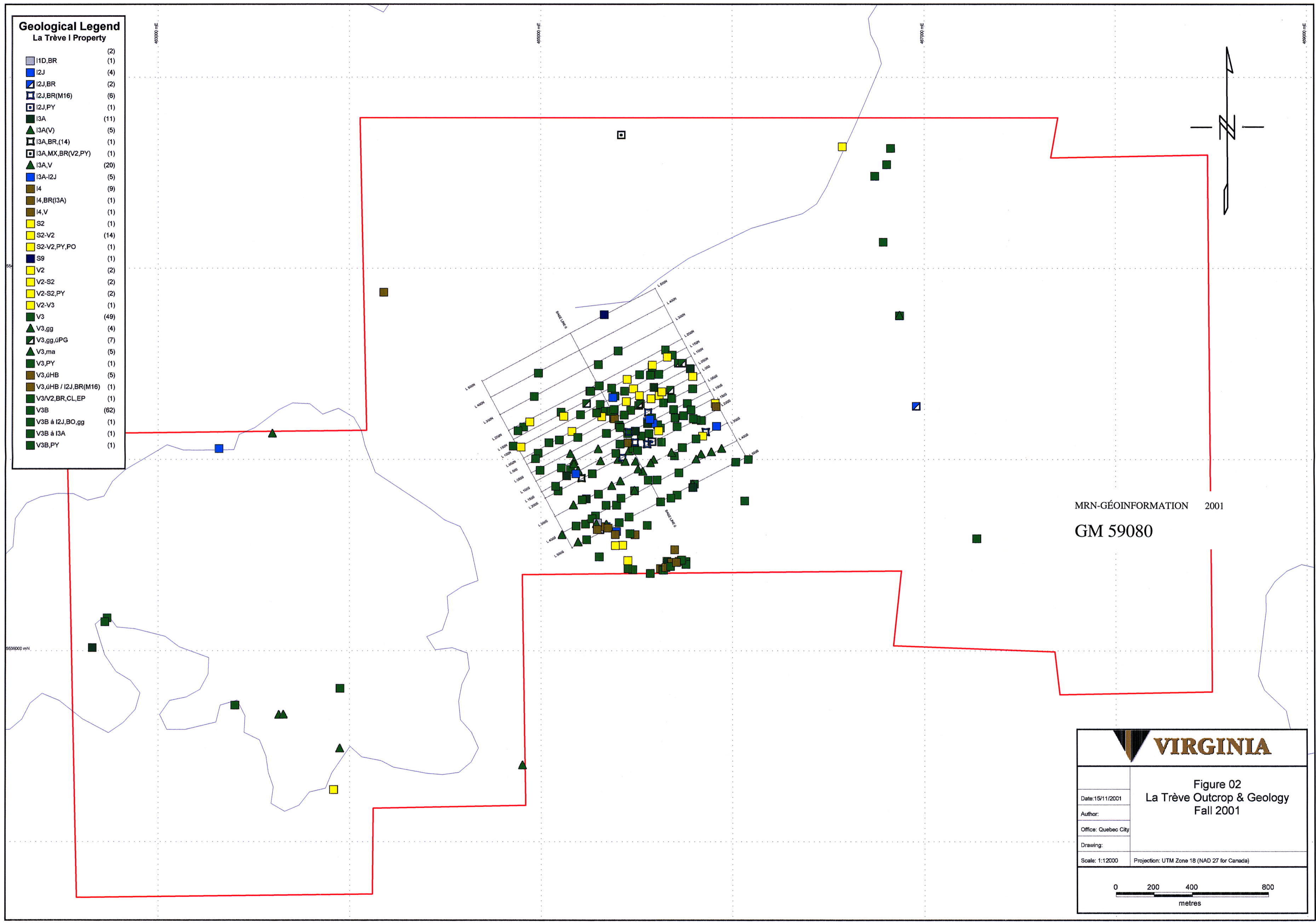


Geological Legend
La Trève I Property

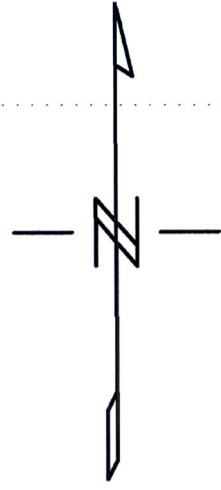
■ I1D, BR	(2)
■ I2J	(1)
■ I2J, BR	(4)
■ I2J, BR(M16)	(2)
■ I2J, PY	(6)
■ I3A	(1)
▲ I3A(V)	(11)
▲ I3A(V)	(5)
■ I3A, BR, (14)	(1)
■ I3A, MX, BR, (V2, PY)	(1)
▲ I3A, V	(20)
■ I3A-I2J	(5)
■ I4	(9)
■ I4, BR(I3A)	(1)
■ I4, V	(1)
■ S2	(1)
■ S2-V2	(14)
■ S2-V2, PY, PO	(1)
■ S9	(1)
■ V2	(2)
■ V2-S2	(2)
■ V2-S2, PY	(2)
■ V2-V3	(1)
■ V3	(49)
▲ V3, gg	(4)
▲ V3, gg, úPG	(7)
▲ V3, ma	(5)
■ V3, PY	(1)
■ V3, úHB	(5)
■ V3, úHB / I2J, BR(M16)	(1)
■ V3/V2, BR, CL, EP	(1)
■ V3B	(62)
■ V3B à I2J, BO, gg	(1)
■ V3B à I3A	(1)
■ V3B, PY	(1)



MRN-GÉOINFORMATION 2001

GM 59080

Figure 02 La Trève Outcrop & Geology Fall 2001	
Date: 15/11/2001	
Author:	
Office: Quebec City	
Drawing:	
Scale: 1:12000	Projection: UTM Zone 18 (NAD 27 for Canada)



463000 mE

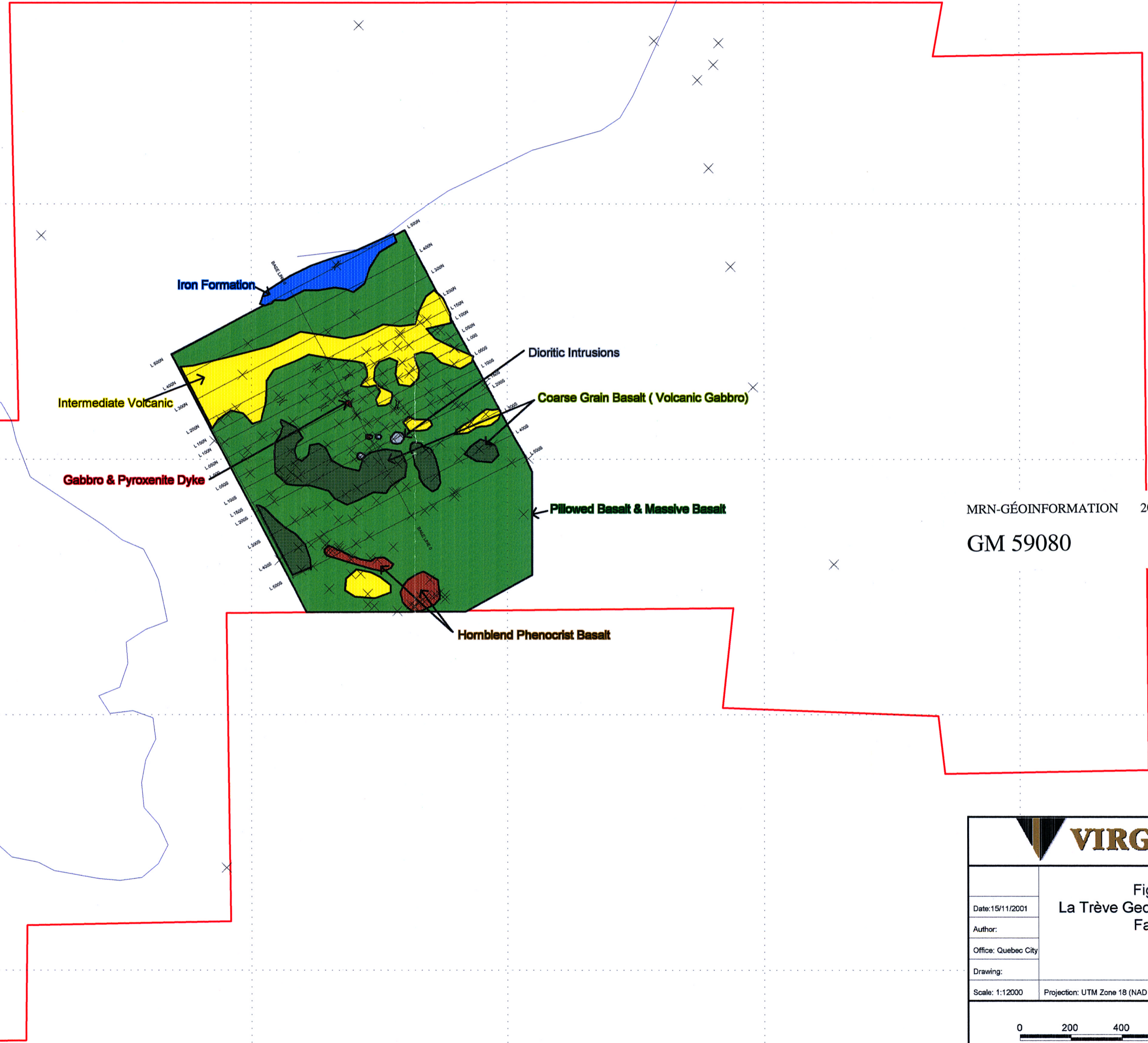
465000 mE

467000 mE

469000 mE

5540000 mN

5536000 mN



MRN-GÉOINFORMATION 2001

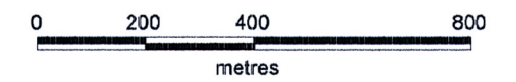
GM 59080

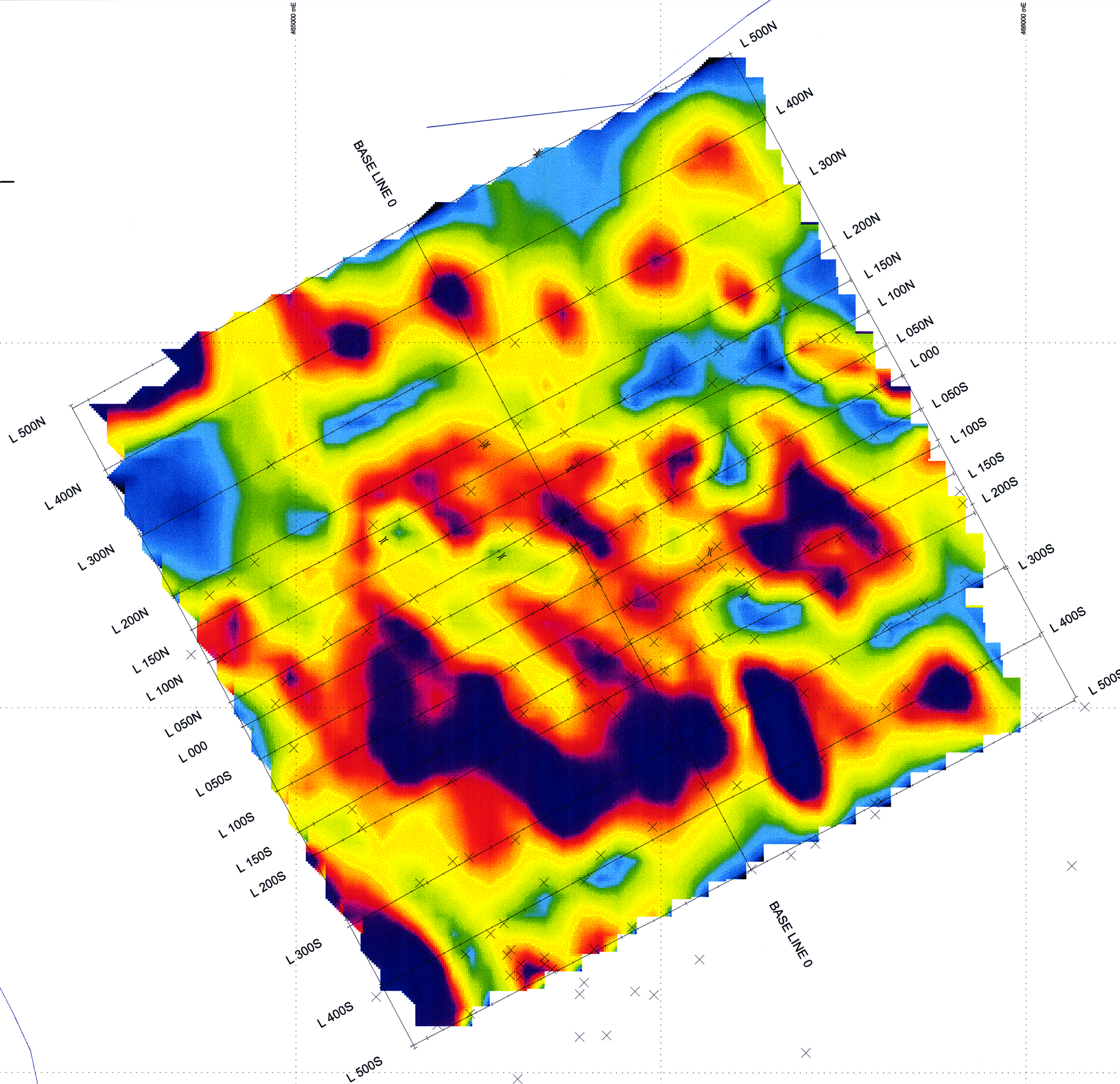
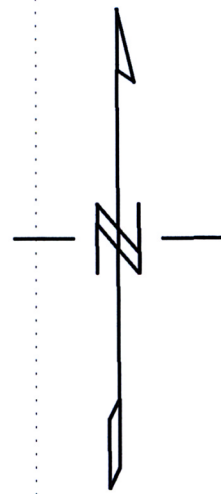


Figure 03
La Trève Geology Interpretation
Fall 2001

Date: 15/11/2001
Author:
Office: Quebec City
Drawing:

Scale: 1:12000 Projection: UTM Zone 18 (NAD 27 for Canada)

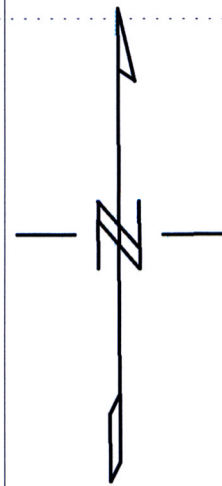




MRN-GÉOINFORMATION 2001

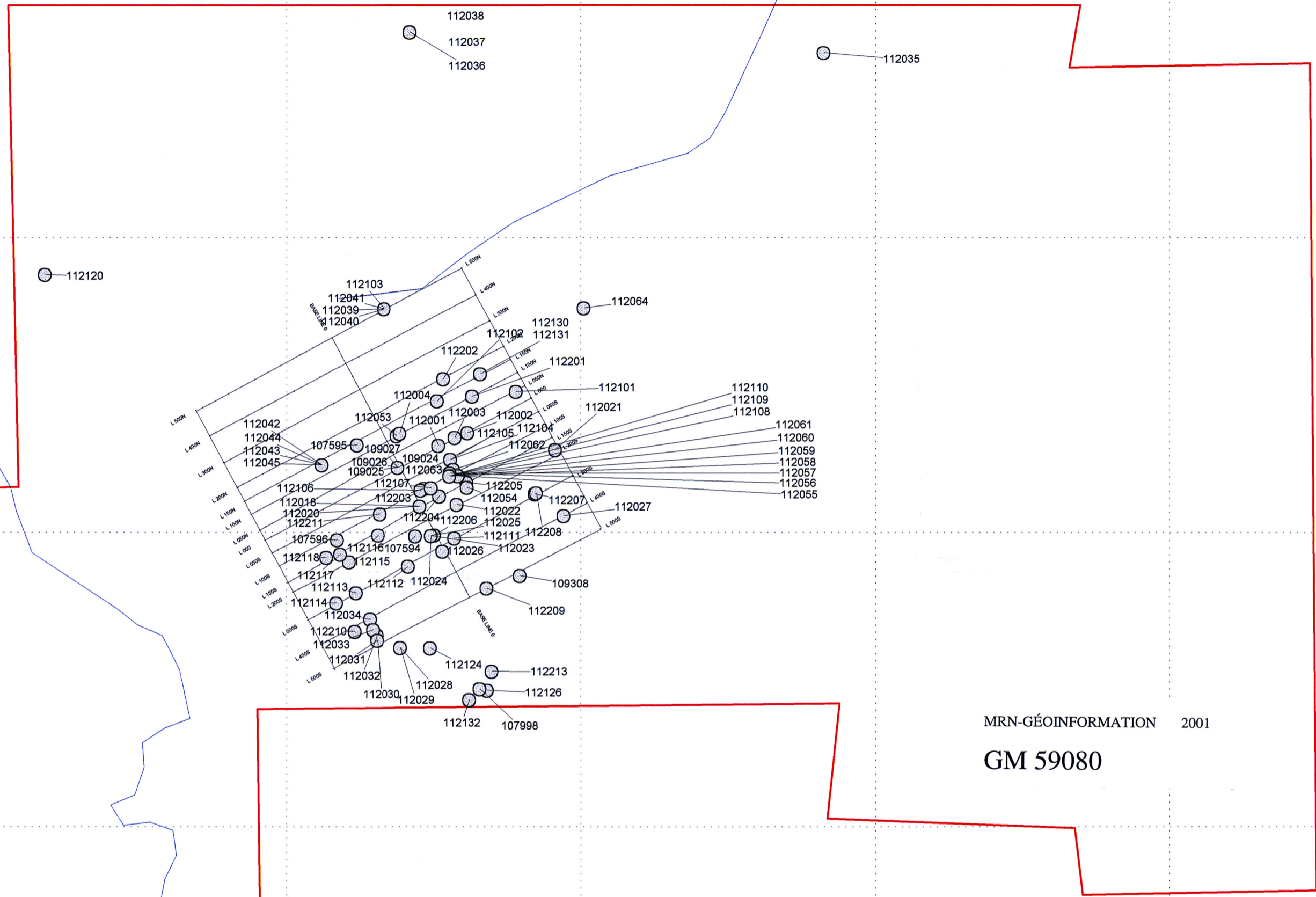
GM 59080

Figure 04 La Trêve I Magnetic Survey Total Field Map	
Date: 19/11/2001	
Author:	
Office: Quebec City	
Drawing:	
Scale: 1:4000	Projection: UTM Zone 18 (NAD 27 for Canada)




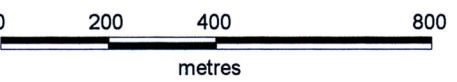
554000 mN

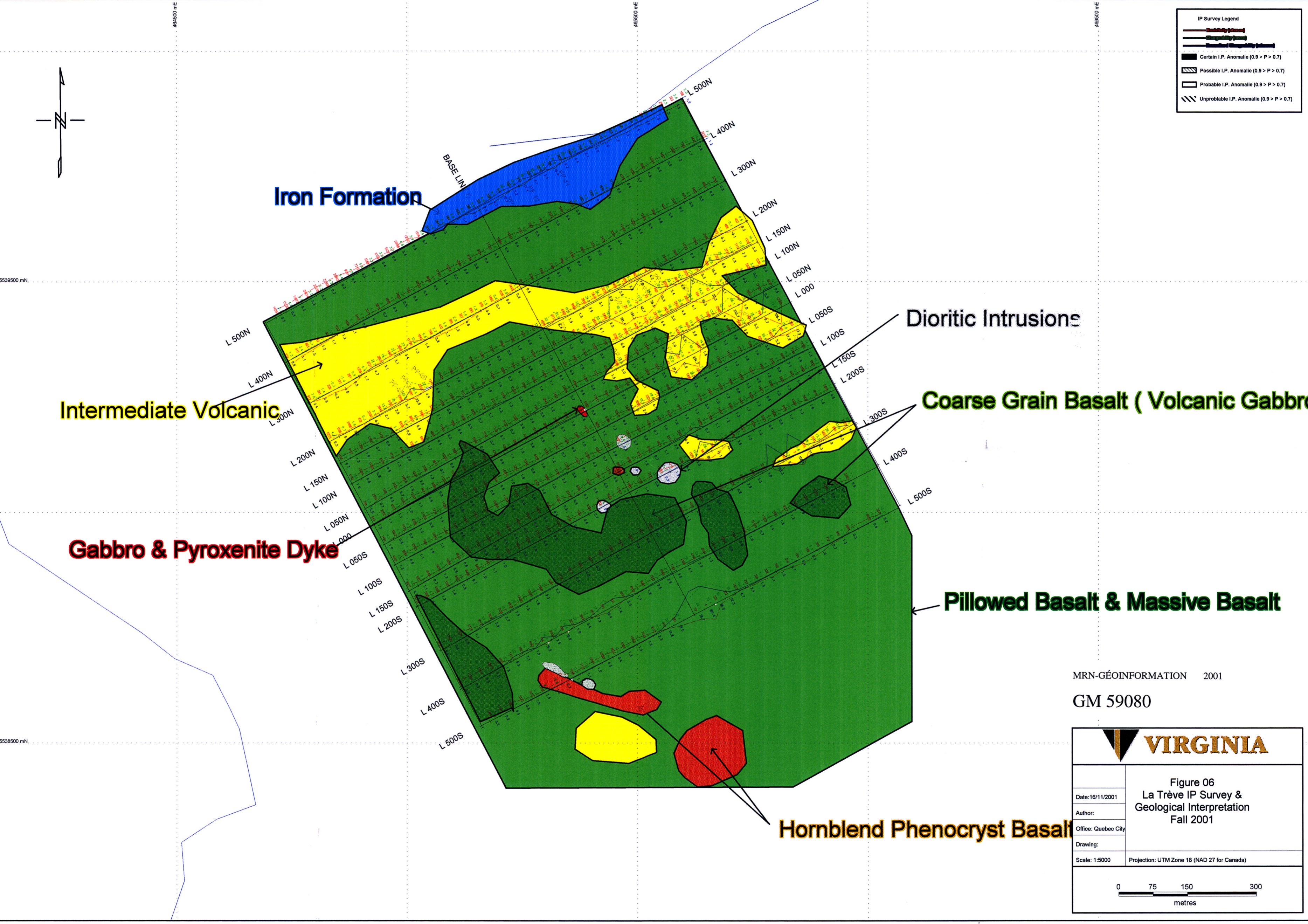
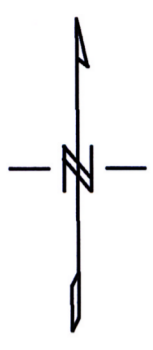
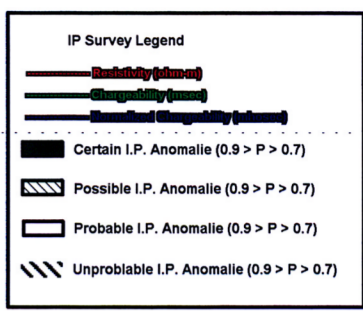
5538000 mN



MRN-GÉOINFORMATION 2001

GM 59080

	
Figure 05 La Trêve Sample # Location Fall 2001	
Date: 15/11/2001	
Author:	
Office: Quebec City	
Drawing:	
Scale: 1:12000	Projection: UTM Zone 18 (NAD 27 for Canada)
	



Iron Formation

Intermediate Volcanic

Dioritic Intrusions

Coarse Grain Basalt (Volcanic Gabbro)

Gabbro & Pyroxenite Dyke

Pillowed Basalt & Massive Basalt

Hornblend Phenocryst Basalt

MRN-GÉOINFORMATION 2001

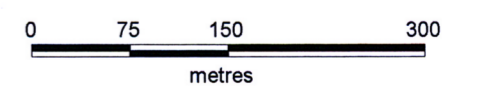
GM 59080

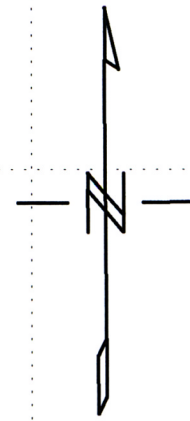


Figure 06
La Trève IP Survey &
Geological Interpretation
Fall 2001

Date: 16/11/2001
Author:
Office: Quebec City
Drawing:

Scale: 1:5000 Projection: UTM Zone 18 (NAD 27 for Canada)





Sample 112120
204 ppm Pt, 374ppm Pd
0.04% Cu & 0.04% Ni

MRN-GÉOINFORMATION 2001
 GM 59080

Sample 109026
4867 ppm Pt, 11531 ppm Pd,
1.76% Ni, 0.30% Cu, 0.16% Co

Sample 109027
368 pp Pt, 1061 ppm Pd,
0.11% Ni, 0.26% Cu,

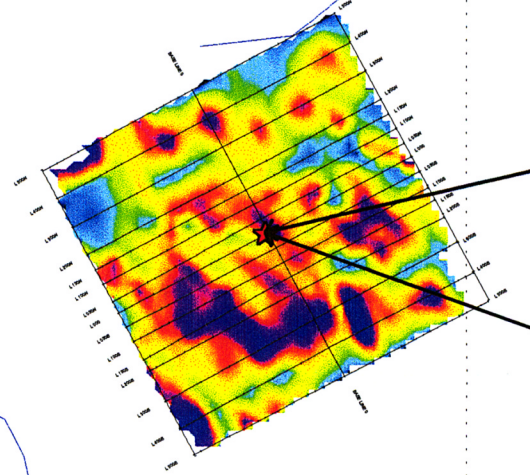


Figure 07 La Trève Compilation Map Fall 2001	
Date: 15/11/2001	
Author:	
Office: Quebec City	
Drawing:	
Scale: 1:20000	Projection: UTM Zone 18 (NAD 27 for Canada)