

NUMÉRO DE PAGE
3

INCO
EXPLORATION

QUEBEC

CROSS LAKE/EAST WEST OPTION
Claim Location Map

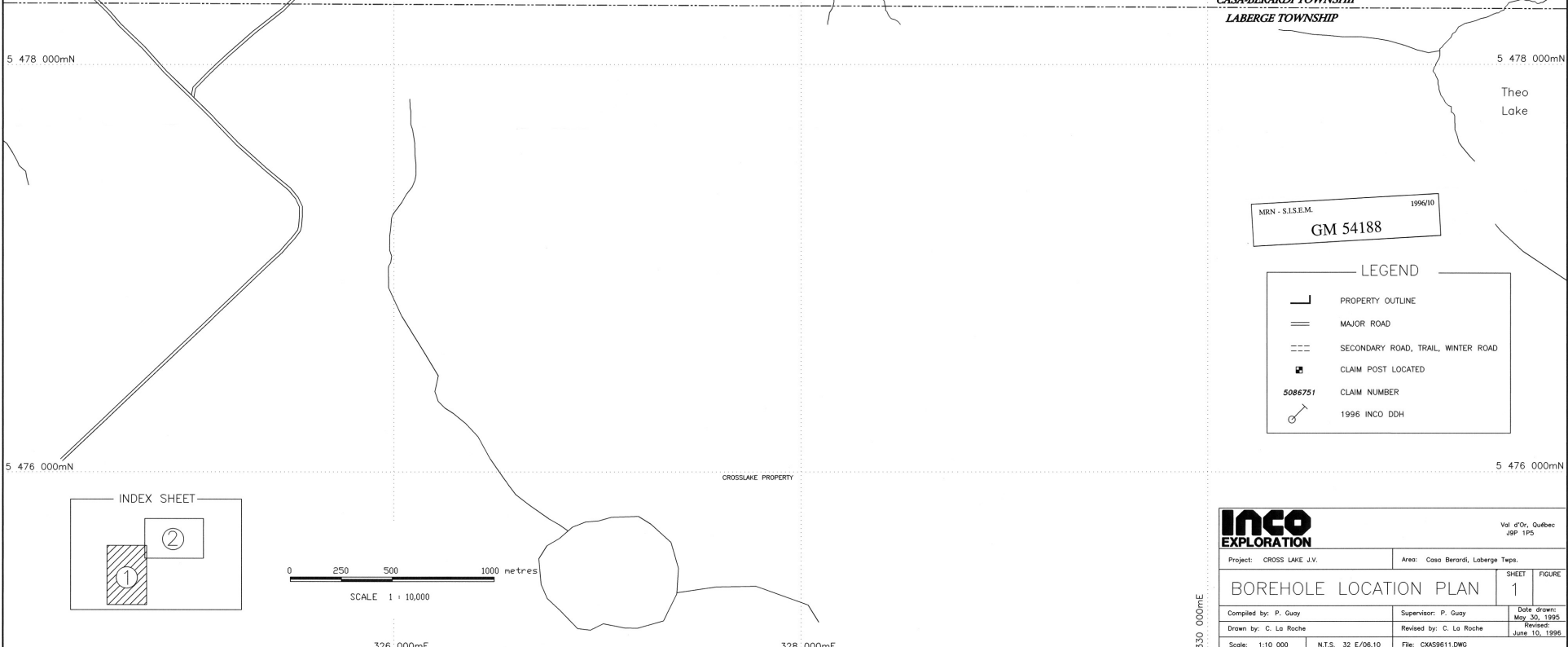
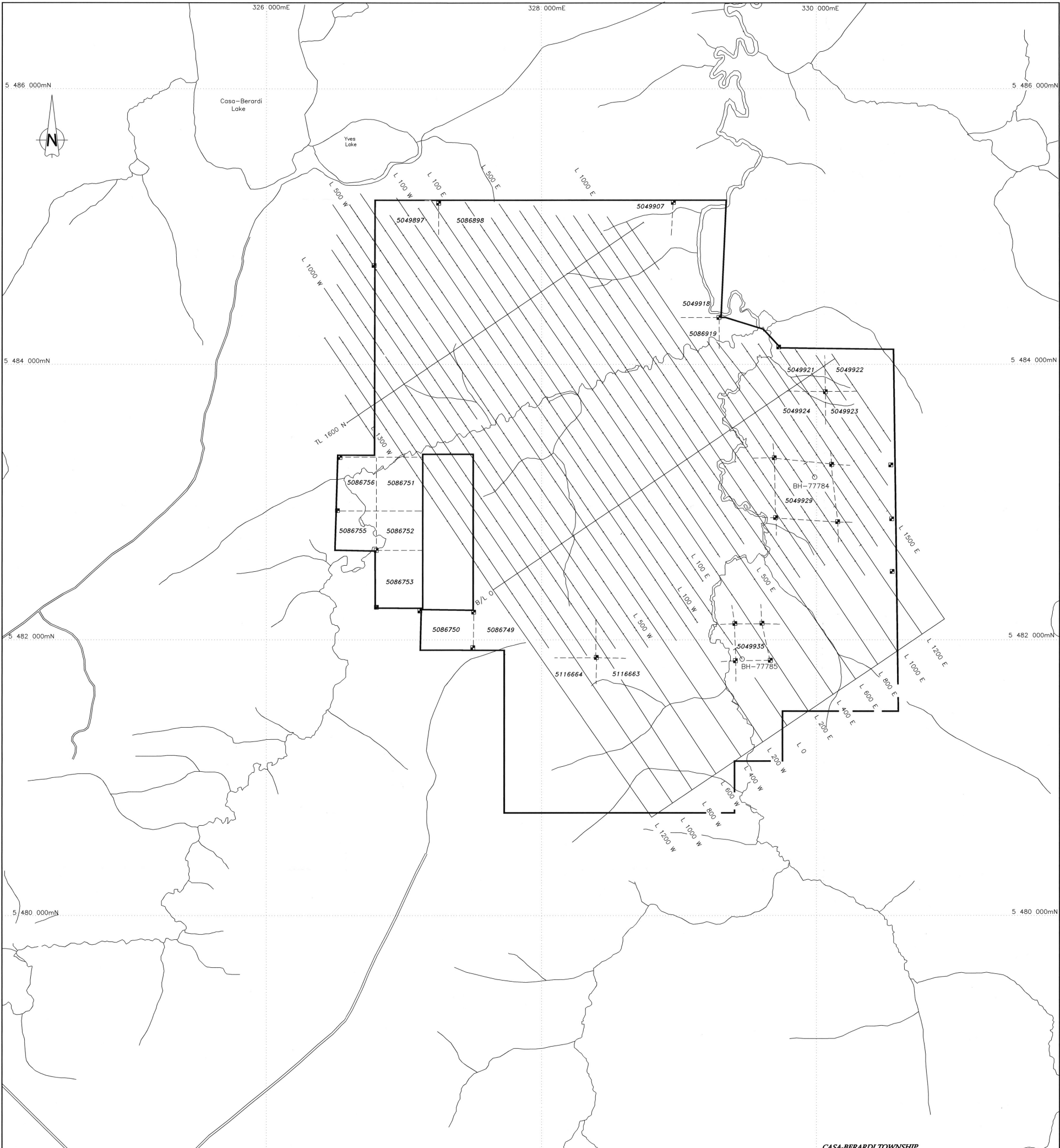
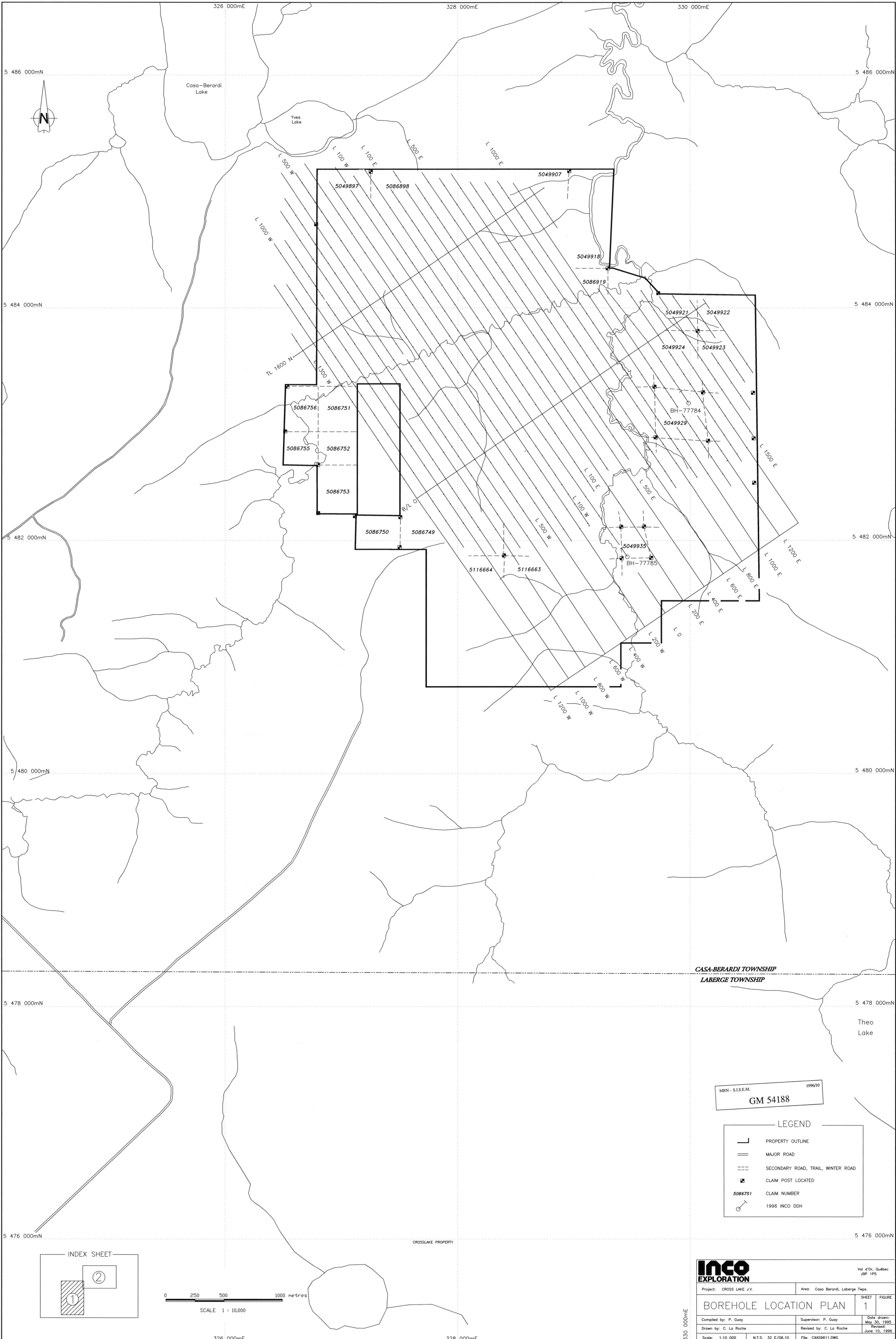
SCALE: 1:50 000

OCTOBER 5, 1995

G-M54188

32/E

FIGURE 2



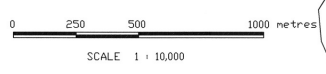
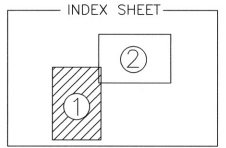
CASA-BERARDI TOWNSHIP
LABERGE TOWNSHIP

Theo
Lake

MRN - S.I.S.E.M. 199610
GM 54188

LEGEND

	PROPERTY OUTLINE
	MAJOR ROAD
	SECONDARY ROAD, TRAIL, WINTER ROAD
	CLAIM POST LOCATED
	CLAIM NUMBER
	1996 INCO DDH



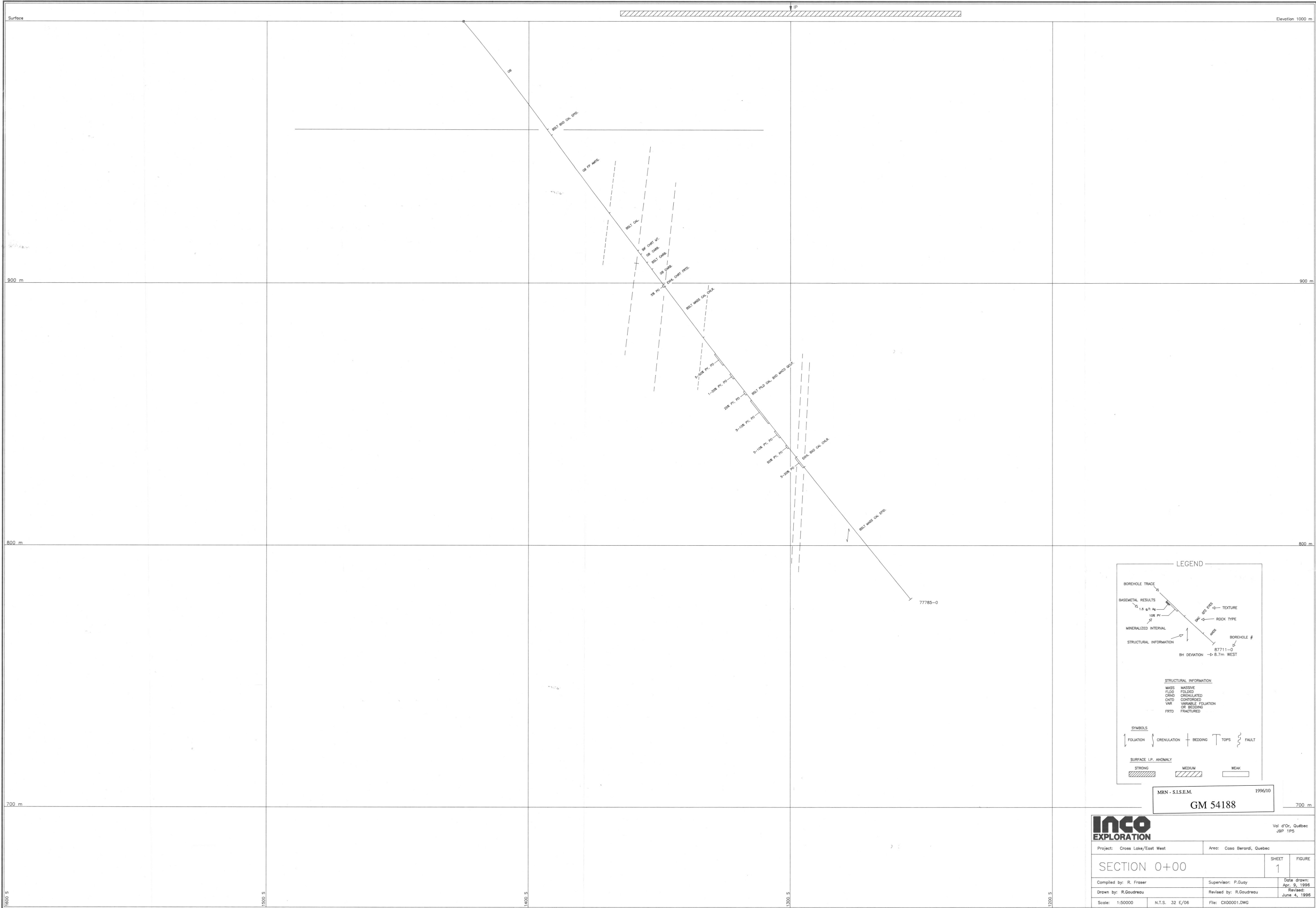
INCO EXPLORATION

Project: CROSS LAKE J.V. Area: Casa Berardi, Laberge Taps.

BOREHOLE LOCATION PLAN SHEET **1** FIGURE

Compiled by: P. Guay	Supervisor: P. Guay	Date drawn: May 30, 1995
Drawn by: C. La Roche	Revised by: C. La Roche	Revised: June 10, 1996
Scale: 1:10,000	N.T.S. 32 E/06.10	File: CMA59611.DWG

330 000mE



LEGEND

BOREHOLE TRACE
 BASEMETAL RESULTS
 MINERALIZED INTERVAL
 STRUCTURAL INFORMATION

1.5 g/t Au
 10% PY
 87711-0
 BH DEVIATION -> 8.7m WEST

STRUCTURAL INFORMATION
 MASS MASSIVE
 FLDG FOLDED
 CRNG CRENULATED
 CNTD CONTORFED
 VAR VARIABLE FOLIATION
 OR BEDDING
 FRTO FRACTURED

SYMBOLS

FOLIATION CRENULATION BEDDING TOPS FAULT

SURFACE I.P. ANOMALY

STRONG MEDIUM WEAK

MRN - S.I.S.E.M. 1996/10
GM 54188

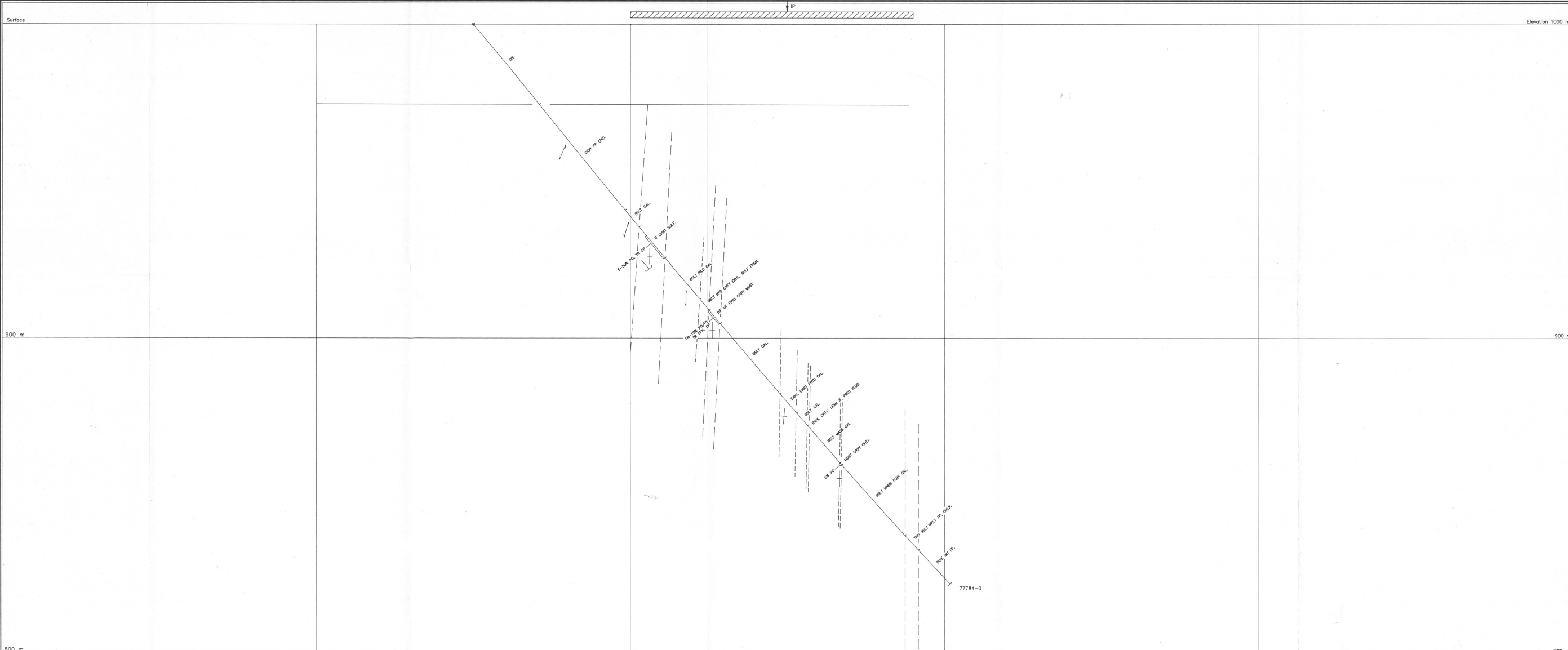
INCO
 EXPLORATION

Project: Cross Lake/East West Area: Casa Berardi, Quebec

SECTION 0+00 SHEET 1 FIGURE 1

Compiled by: R. Fraser Supervisor: P. Guay Date drawn: Apr. 9, 1996
 Drawn by: R. Goudreau Revised by: R. Goudreau June 4, 1996

Scale: 1:50000 N.T.S. 32 E/06 File: CX00001.DWG



LEGEND

BOREHOLE TRACE
 BASEMETAL RESULTS
 MINERALIZED INTERVAL
 STRUCTURAL INFORMATION
 BOREHOLE #
 BH DEVIATION -> 8.7m WEST

STRUCTURAL INFORMATION
 MASS MASSIVE
 FLDD FOLDED
 CRND CRENULATED
 CNTD CONTORDED
 VAR VARIABLE FOLIATION OR BEDDING
 FRTO FRACTURED

SYMBOLS
 FOLIOATION CRENULATION BEDDING TOPS FAULT

SURFACE I.P. ANOMALY
 STRONG MEDIUM WEAK

MRN - S.I.S.E.M. 1996/10
GM 54188

INCO
EXPLORATION

Project: Cross Lake/East West Area: Casa Berardi, Quebec

SECTION 1200 E SHEET 1 FIGURE 1

Compiled by: R. Fraser Supervisor: P. Guay Date drawn: Apr 9, 1996
 Drawn by: R. Goudreau Revised by: R. Goudreau Revised: June 4, 1996
 Scale: 1:500 N.T.S. 32 E/06 File: CX1200E1.DWG

Val d'Or, Quebec J9P 1P5