

2+00mS

1+00mS

MAX MIN CONDUCTOR
35 mho

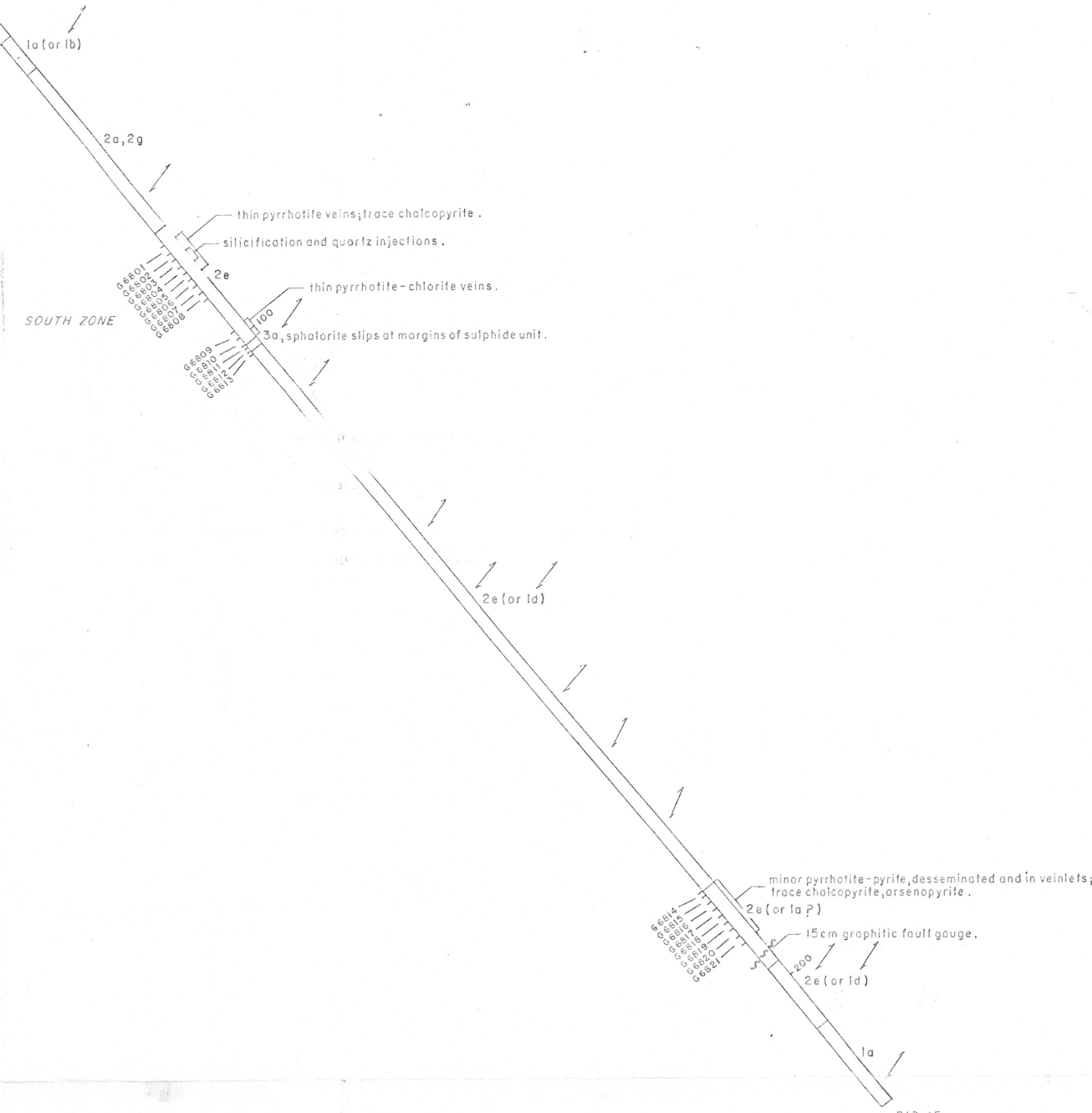
MARCAUT SHOWING
AT BL0+00, L0+00

L0+00

LM-1A

Az. 330°

-50°



Samples	Au ppb	Ag ppm	Cu ppm	Zn ppm
G6801	156	0.3	33	40
G6802	2230	0.7	126	28
G6803	161	0.7	148	11
G6804	3540	0.5	75	14
G6805	1540	0.5	130	24
G6806	202	0.7	131	310
G6807	274	0.7	239	370
G6808	2260	0.5	55	82
G6809	61	0.8	76	40
G6810	254	1.8	124	86
G6811	282	7.9	105	720
G6812	-	-	-	-
G6813	-	-	-	-
G6814	-	-	-	-
G6815	-	-	-	-
G6816	44	-	-	-
G6817	42	-	-	-
G6818	6	-	-	-
G6819	32	-	-	-
G6820	57	-	-	-
G6821	49	-	-	-

MER - S.I.S.E.M. 1993/12/14
GM 52214

Scale 1:5000
 0 10 20 metres

Teck Exploration Ltd.
 DDH LM-1A
 Lac MARCAUT PROJECT
 1509 TWP., QUEBEC

JULY/1992	16100	032N/04	6880
-----------	-------	---------	------

1+00mS

LM-2

Az. 330°

L2+00mE

-50°

2e (or 1a)

silica-biotite alteration.

2e, 2g

2mm sphalerite stringer.

2e, 2c

silicified with minor pyrrhotite.

quartz injections; minor pyrite, trace chalcopyrite.

G6822

G6823

G6824

G6825

G6826

3a

silicified.

100

quartz stockwork with trace chalcopyrite.

2e (2b, 2g)

meta-argillite with 15% pyrrhotite - pyrite stringers.

G6827

114.0m

MRN-GÉOINFORMATION 1993

GM 52214

Scale 1 : 500

10 0 10 20 metres

Samples	Au ppb	Ag ppm	Cu ppm	Zn ppm
G6822	90	1.2	58	5700
G6823	22	0.6	74	56
G6824	383	0.4	18	54
G6825	3520	3.18	1105	2330
G6826	38	0.5	312	28
G6827	216	2.7	447	860

Teck Exploration Ltd.

DDH LM-2

Lac MARCAUT PROJECT
1509 TWP., QUEBEC

JULY/1992

16100

032N/04

6881

3+00mS

2+00mS

LM-9

Az. 330°

L8+00mE

-45°

75 mho

20cm quartz vein with pyrrhotite-arsenopyrite halo.

SOUTH ZONE

fault zone; open spaces cemented with quartz +/- feldspar; trace chalcopyrite, sphalerite.

2a(or la) locally sericitic.

chlorite-pyrite-pyrrhotite-veinlets.

2d(3a) MARCAUT HORIZON

fracture stockwork; silica-carbonate alteration.

192.0m

Samples	Au ppb	Ag ppm	Cu ppm	Zn ppm
G6744	208	0.1	20	15
G6885	740	-	-	-
G6745	930	0.1	42	19
G6743	411	0.4	25	29
G6742	930	0.2	29	37
G6886	1100	-	-	-
G6887	306	-	-	-
G6888	510	-	-	-
G6889	640	-	-	-
G6890	454	0.7	65	11
G6891	292	1.0	111	21
G6892	810	1.5	104	11
G6893	438	0.8	88	19
G6894	670	1.9	208	41
G6895	480	1.5	111	16
G6896	590	3.0	215	201
G6897	790	2.2	190	119
G6898	810	2.5	371	539
G6899	102	0.5	148	145
G6900	182	2.5	453	1400
G6701	6	0.3	150	89
G6702	20	0.3	60	23
G6703	30	0.3	197	49
G6704	22	0.4	97	27
G6705	53	0.2	57	540
G6706	<5	0.1	129	195
G6707	<5	0.1	153	247
G6708	79	ND	81	965
G6709	23	0.1	77	54
G6710	16	0.1	109	64
G6711	12	0.9	468	694
G6712	11	0.3	69	50
G6713	30	-	-	-
G6714	30	-	-	-

MER - S.I.S.E.M. 1993/12/14
GM 52214

Scale 1 : 500
 10 0 10 20 metres

Teck Exploration Ltd.			
DDH LM-9			
LacMARCAUT PROJECT 1509 TWP., QUEBEC			
JULY/1992	16100	032N/04	6888

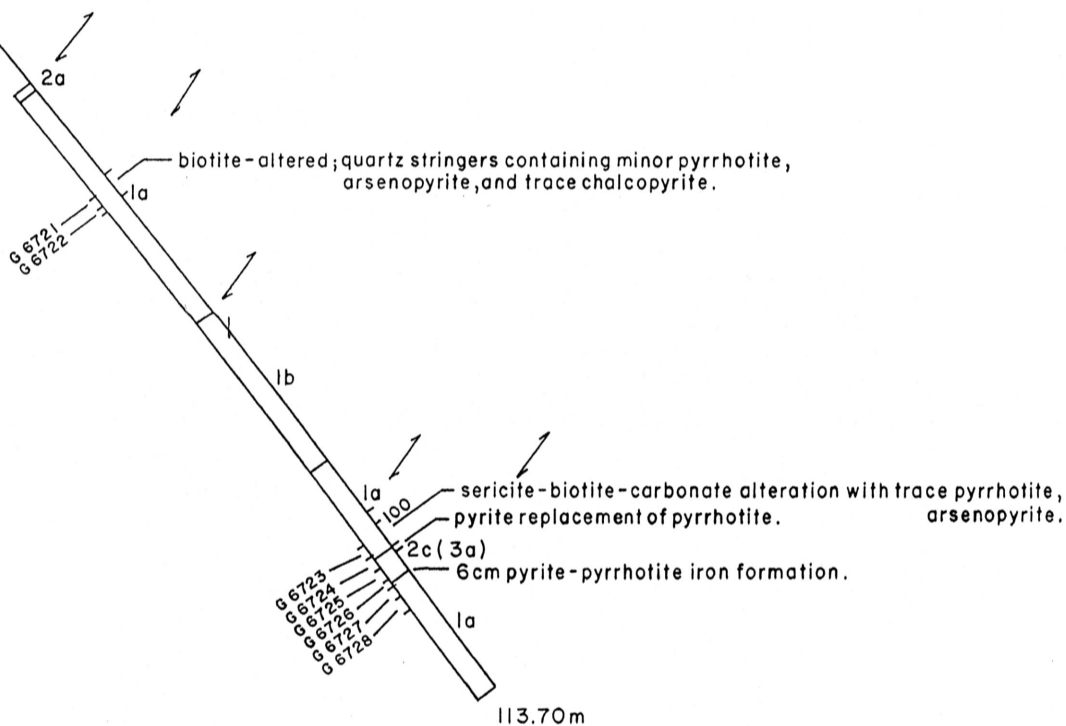
3+00mS

LM-10

Az. 330°

-55°

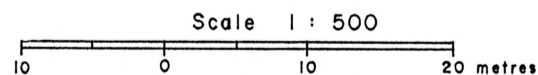
L5+00mE



MRN-GÉOINFORMATION 1993

GM 52214

Samples	Au ppb	Ag ppm	Cu ppm	Zn ppm
G6721	23	-	-	-
G6722	64	-	-	-
G6723	77	0.2	49	114
G6724	13	0.9	49	114
G6725	334	1.3	104	46
G6726	780	2.1	85	477
G6727	156	0.6	45	58
G6728	472	0.4	58	32



Teck Exploration Ltd.			
DDH LM-10			
Lac MARCAUT PROJECT 1509 TWP., QUEBEC			
JULY/1992	16100	032N/04	6889

3+00mS

LM-II

Az. 330°

L 11+00mE

-50°

1a

2a(2f) sericitic
strong sericite-Kspar alteration

G6733

1b

biotite-sericite altered; minor quartz veining and sulphide mineralization

G6734

2a(2f) sericitic

3c(3a) pyrrhotite stringers and breccia-fillings
chlorite-pyrite veinlets;
5mm sphalerite seams

114.0m

SOUTH ZONE

MRN-GÉOINFORMATION 1993

GM 52214

Scale 1 : 500

10 0 10 20 metres

Samples	Au ppb	Ag ppm	Cu ppm	Zn ppm
G6733	154	-	-	-
G6734	210	-	-	-
G6735	38	0.3	54	60
G6736	138	1.9	56	474
G6737	418	5.8	306	3425
G6738	286	6.6	171	441
G6739	428	1.5	170	40
G6740	1300	5.3	240	695
G6741	54	1.5	94	247

Teck Exploration Ltd.

DDH LM-II

Lac MARCAUT PROJECT
1509 TWP., QUEBEC

JULY/1992

16100

032N/04

6890

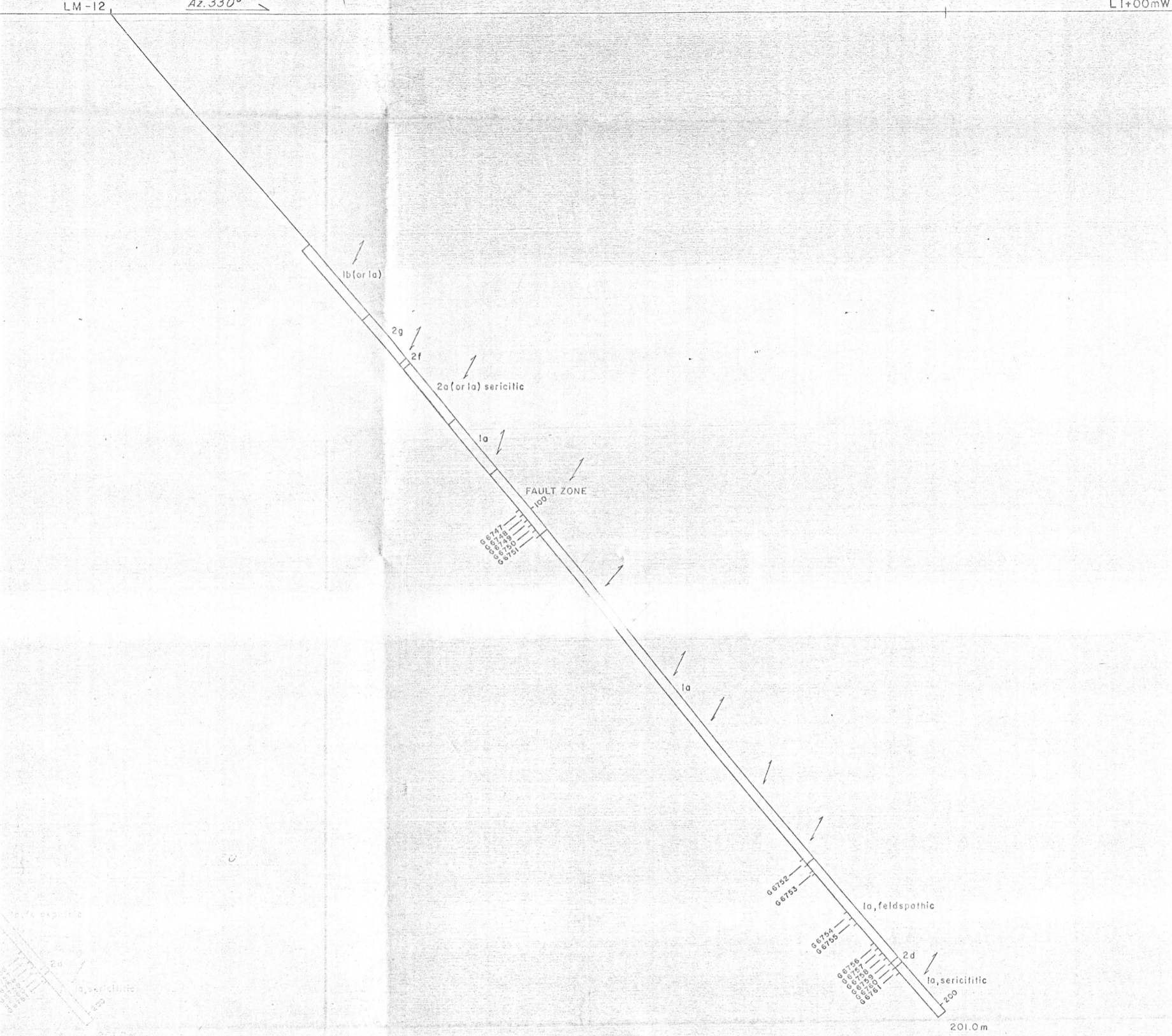
2+00mS

1+00mS

LM-12

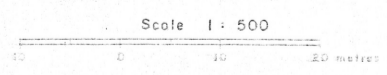
Az. 330°

L1+00mW



Samples	Au ppb	Ag ppm	Cu ppm	Zn ppm
G6747	463	1.1	-	-
G6748	172	0.2	-	-
G6749	1270	2.2	-	-
G6750	89	1.1	-	-
G6751	157	0.7	-	-
G6752	164	0.6	-	-
G6753	204	0.2	-	-
G6754	820	ND	-	-
G6755	306	ND	-	-
G6756	322	0.1	-	-
G6757	317	ND	-	-
G6758	8	NE	-	-
G6759	22	0.1	-	-
G6760	85	1.7	-	-
G6761	35	0.4	-	-

MER - S.I.S.E.M. 1993/12/14
GM 52214



Teck Exploration Ltd.			
DDH LM-12			
Lac MARCAUT PROJECT 1509 TWP., QUEBEC			
AUG / 1992	16100	032N / 04	6891

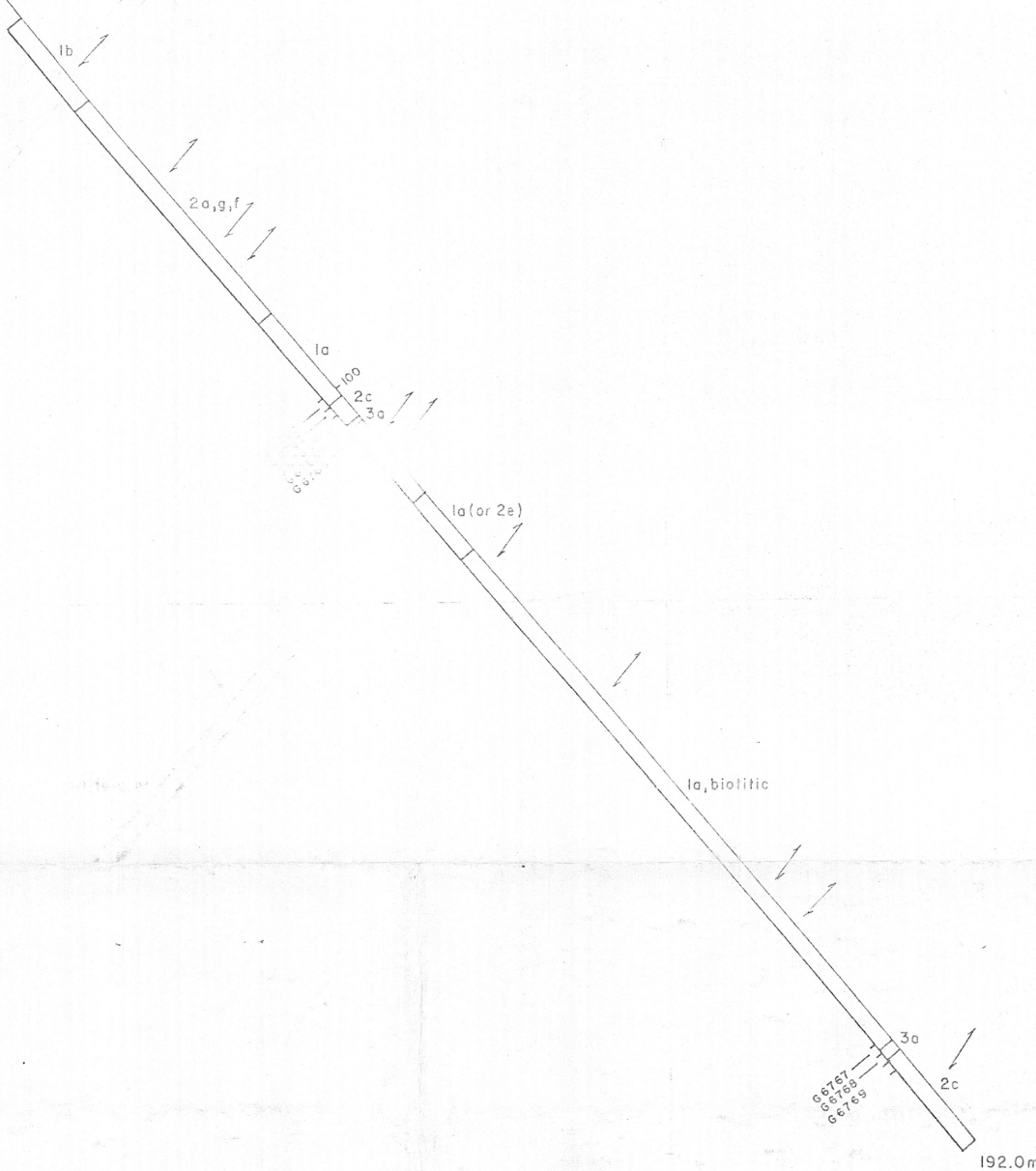
2+00mS

1+00mS

LM-13A

Az. 330°

L7+00mW



Samples	Au ppb	Ag ppm	Cu ppm	Zn ppm
G6762	73	ND	-	-
G6763	47	1.0	-	-
G6764	166	0.8	-	-
G6765	304	2.2	-	-
G6766	16	0.3	-	-
G6767	46	0.2	43	245
G6768	388	0.2	126	148
G6769	49	2.6	83	263

Scale 1 : 500
 10 0 10 20 metres

MER - S.I.S.E.M.

1993/12/14

GM 52214

Teck Exploration Ltd.

DDH LM-13A

Lac MARCAUT PROJECT

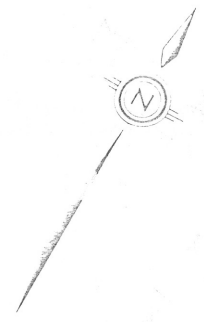
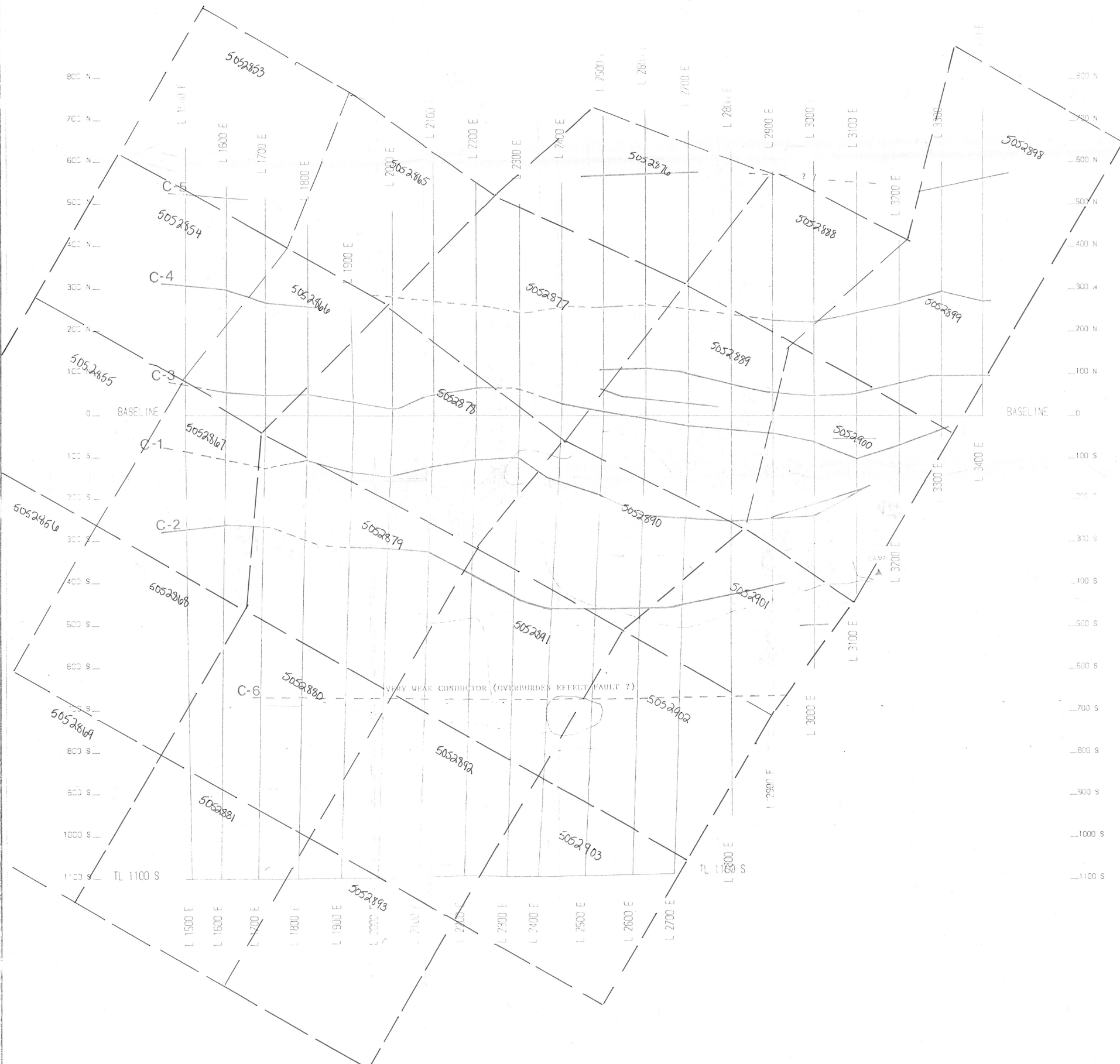
1509 TWP., QUEBEC

AUG./1992

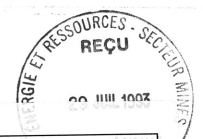
16100

032N/04

6892



CONDUCTORS AXES STRONG WEAK



MER - S.I.S.E.M. 1993/12/14
GM 52214

COMPILATION MAP
 FOR

Teck Exploration Ltd.
 Option - Faircamp Resources Ltd.
 Fort Rupert Resources Ltd.

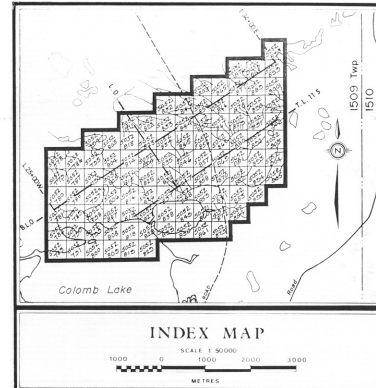
PROJECT Marcaut Lake Property

SURVEYED BY GILBERT LAMOTHE DATE March 92

DRAWN BY Exploration Services Reg'd SCALE 1:5000

G.L. GEOSERVICE INC.

TWP 1509



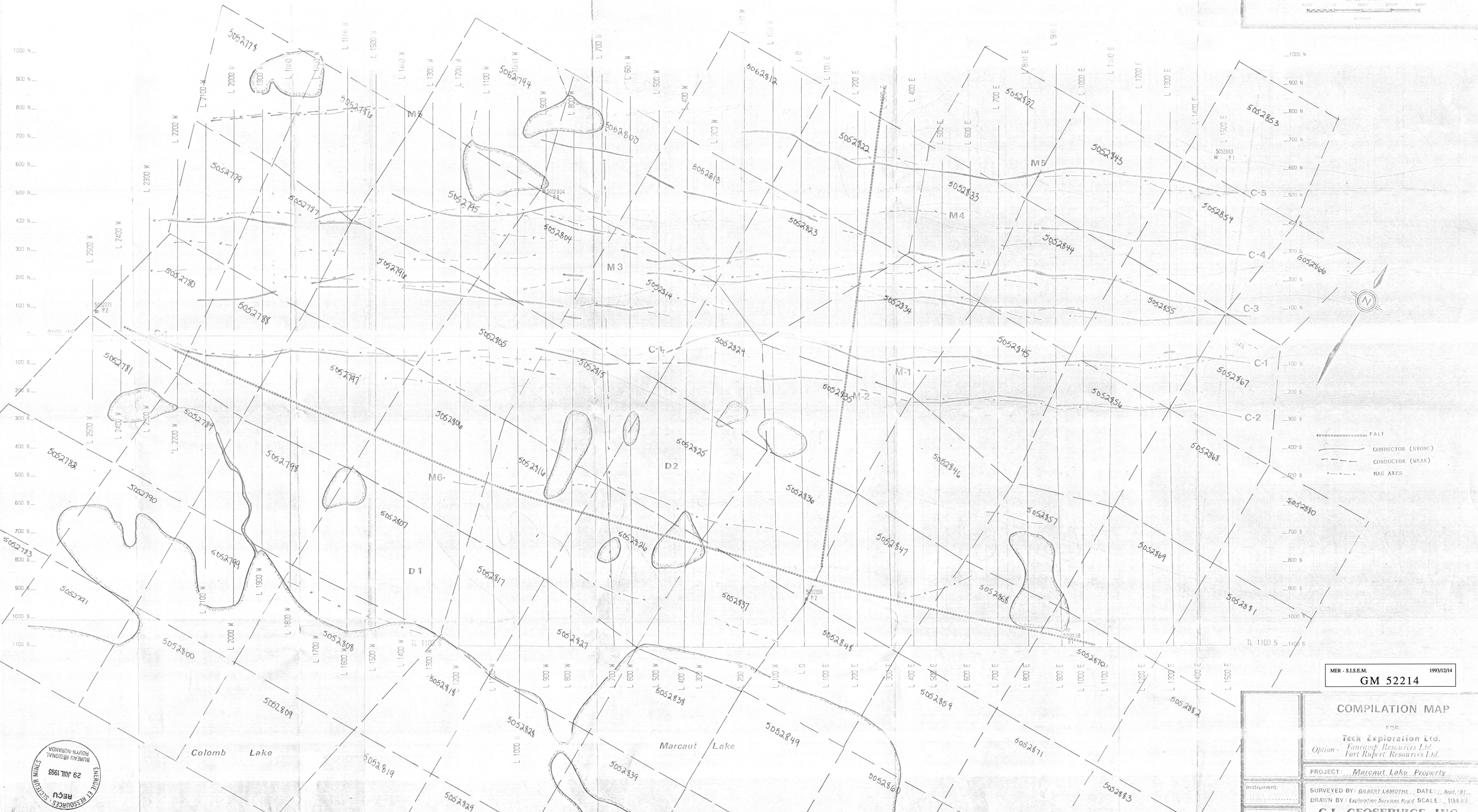
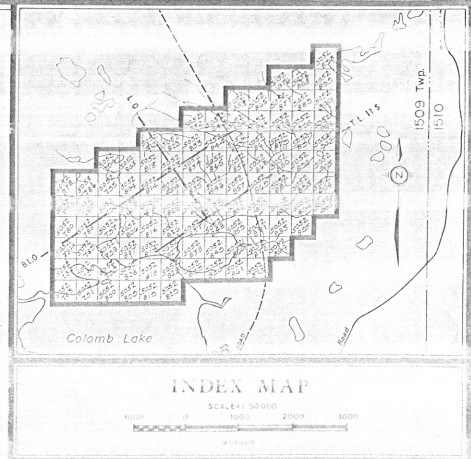
- LEGEND**
- 5 FELSIC INTRUSIVES**
 - 5a Tonalite
 - 5b Granitic pegmatite
 - 4 MAFIC INTRUSIVES**
 - 4a Diabase
 - 3 CHEMICAL METASEDIMENTS**
 - 3a Siliceous iron formation, massive to semi-crystalline pyrochlore-pyrite
 - 3b Garnet-pyroxide-amphibole schist, siliceous sulphide iron formation
 - 3c Sulfide iron formation, magnetite-bearing siliceous waste and/or chert
 - 3d Quartzite, very crystalline chert
 - 2 EPICLASTIC METASEDIMENTS**
 - 2a Fine-grained felsic/basaltic schist, greywacke
 - 2b Felsic/basaltic granofelsic, arkosic wacke
 - 2c Quartzite granofelsic, siliceous wacke
 - 2d Argillite (gr) graphitic
 - 2e Felsic/basaltic amphibole schist, volcanoclastic wacke
 - 2f Garnet-biotite amphibole schist, volcanoclastic wacke
 - 2g Porphyritic felsic/basaltic schist, reworked felsic/basaltic tuff
 - 1 MAFIC METASEDIMENTS**
 - 1a Fine-grained amphibolite, massive mafic flow
 - 1b Medium-grained amphibolite, mafic syroclastic sill
 - 1c Felsic amphibolite
 - 1d Highly strained amphibolite, containing feldspar-rich bands and lenses
 - 1e Amphibolite granofelsic
 - 1f Iron-poor amphibolite composed of colourless, acicular amphibole

- SYMBOLS**
- inferred geological contact
 - foldation, strike and dip
 - Mineral orientation, plunge
 - Mineral asymmetric fold showing plunge of fold axis
 - Shear
 - TECK drill hole
 - Old drill hole
 - Trench
 - Claim post - observed
 - Sleep ridge face
 - Area of sparse vegetation
 - Test pit in sand
 - Bedrock sample location

MIR - S.I.S.E.M. 1993/12/14
GM 5214
 Scale 1 : 5000
 100 0 100 200 300 400 METRES



Teck Exploration Ltd
COMPILATION
 Lac MARCAUT PROJECT
 1509 TWP., QUEBEC
 R - BURK MAY / 1992 16100 032N/04 **6879**



MER - SISEM. 1993/12/14
GM 52214

COMPILATION MAP
FOR
Teck Exploration Ltd.
Option - **Fancamp Resources Ltd.**
Fort Rupert Resources Ltd.

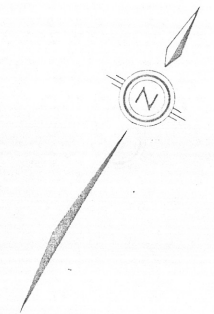
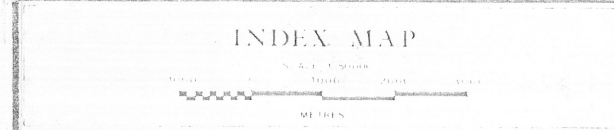
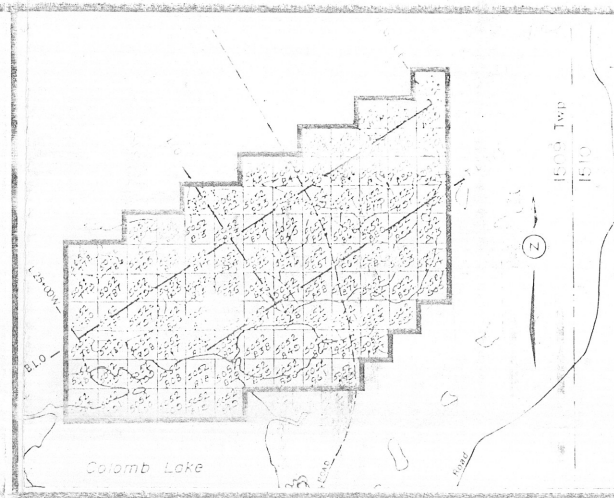
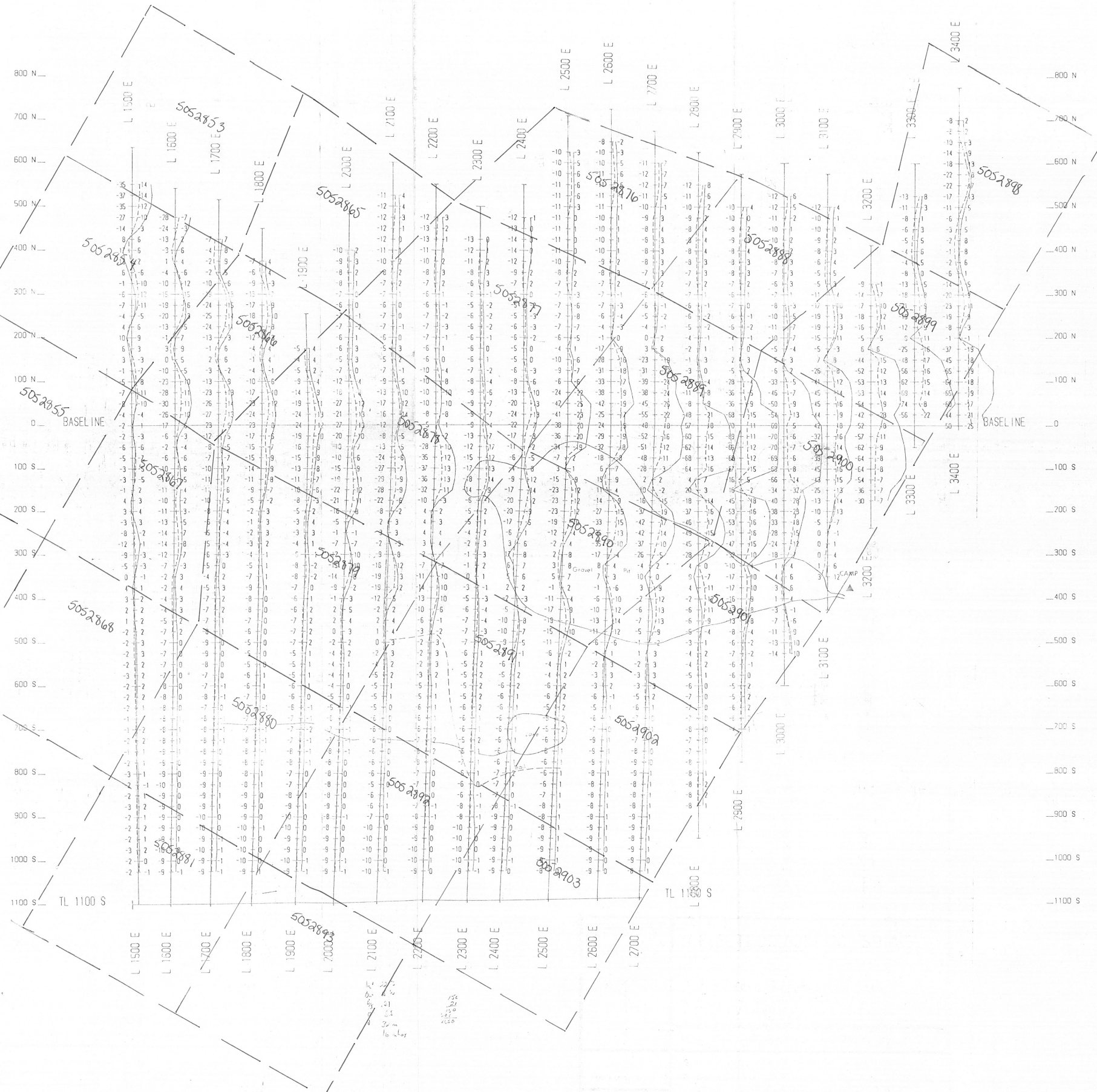
PROJECT: **Marcaut Lake Property**

SURVEYED BY: **BRUNO LABOITHE** DATE: **Sept. 1971**
DRAWN BY: **Exploration Services Inc.** SCALE: **1:1500**

G.L. GEOSERVICE INC.

Instrument:
TWP...1509

ENTRÉE ET RESSOURCES
RECUE
29 JUIL 1993
BUREAU REGIONAL
BOURN-NOBANT
STYMBE
SIBRE



ENERGETIC RESOURCES - SECTEUR MINES
REÇU
 29 JUIL 1993
 AU RÉGIONAL (N-NORANDA)

MER - S.I.S.E.M. 1993/12/14
GM 52214

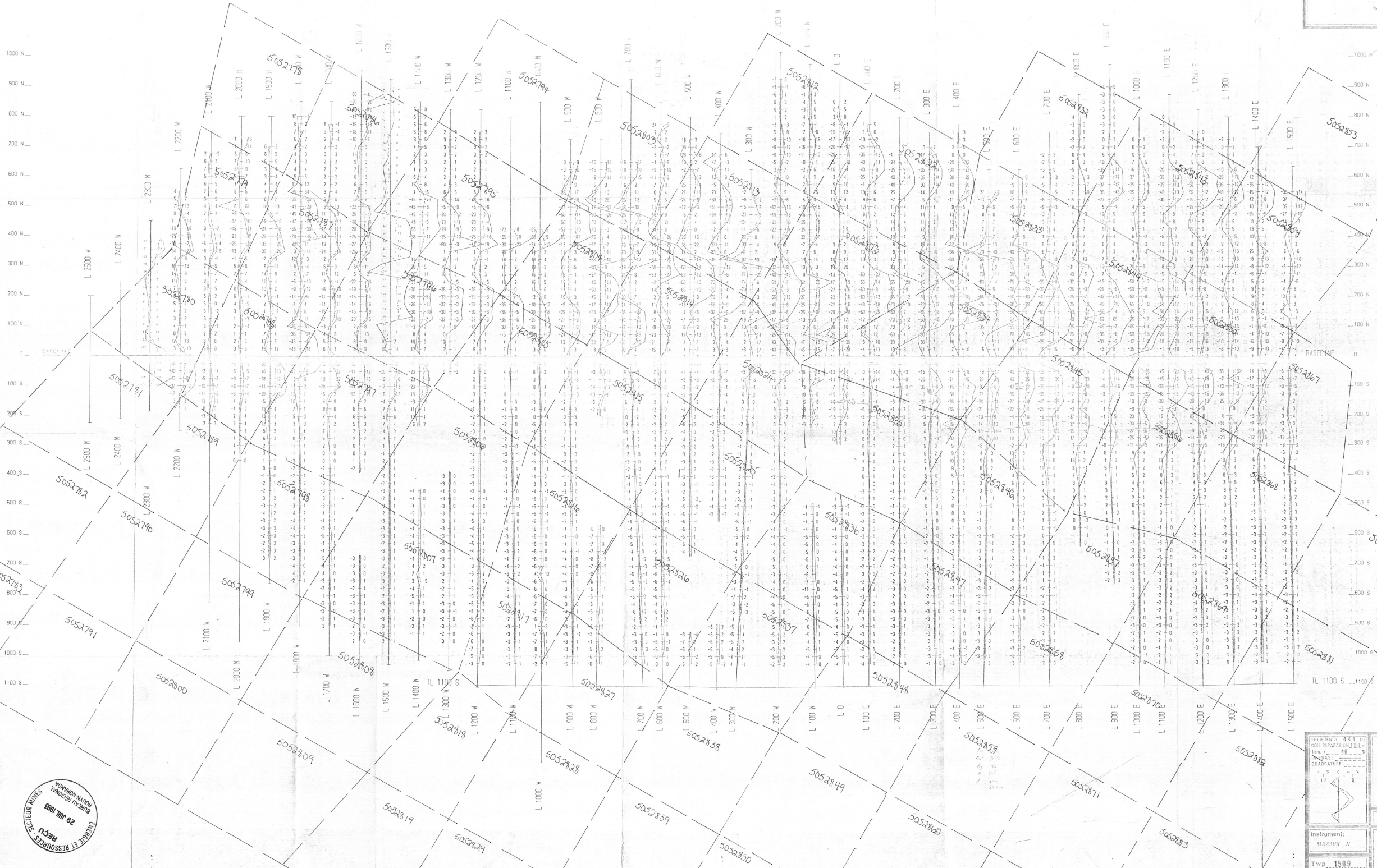
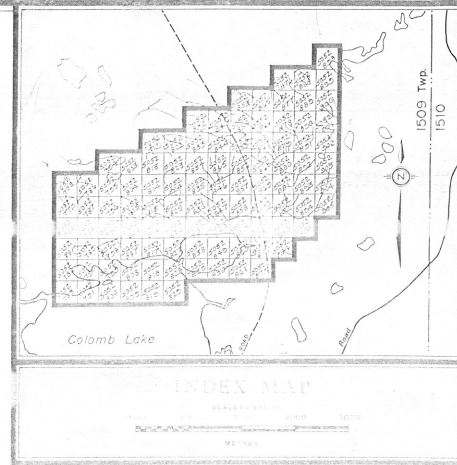
FREQUENCY 4.4 Hz
 COIL SEPARATION 150 m
 1cm = 40 m
 IN PHASE
 QUADRATURE
 I.P.

ELECTROMAGNETIC SURVEY
 FOR
Teck Exploration Ltd.
 Option - **Fancamp Resources Ltd.**
 Fort Rupert Resources Ltd.

PROJECT **Marçaut Lake Property**

SURVEYED BY **GILBERT LAMOTHE** DATE **March 92**
 DRAWN BY **Exploration Services Reg'd** SCALE **1:5000**
G.L. GEOSERVICE INC.

Instrument
MAXMIN II
 LWP: **1509**



MER - S.I.S.E.M. 1993/12/14
GM 5214

ELECTROMAGNETIC SURVEY

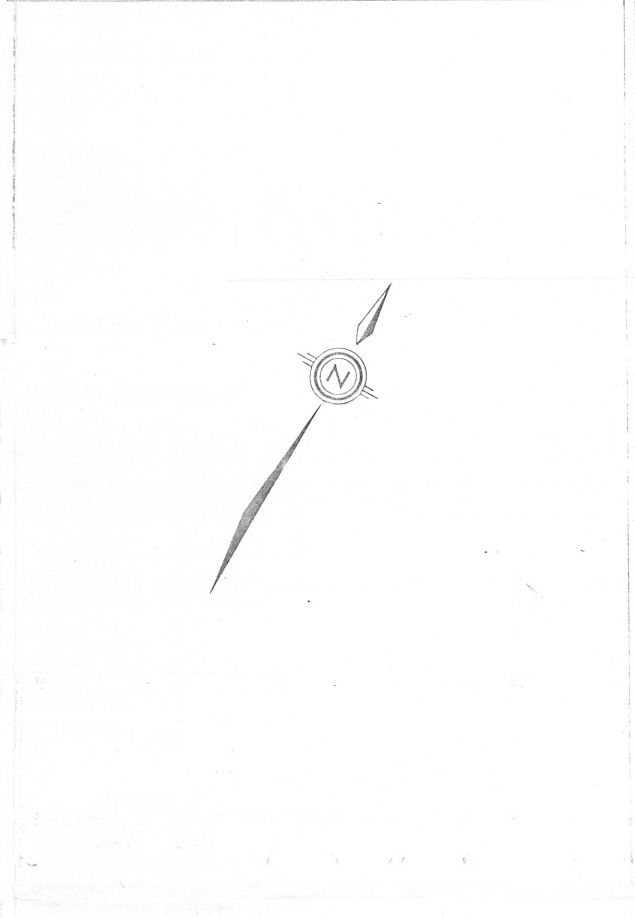
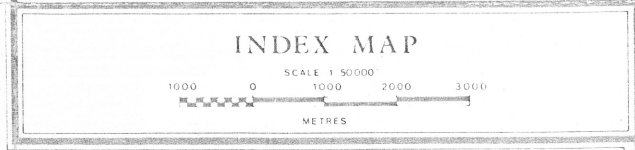
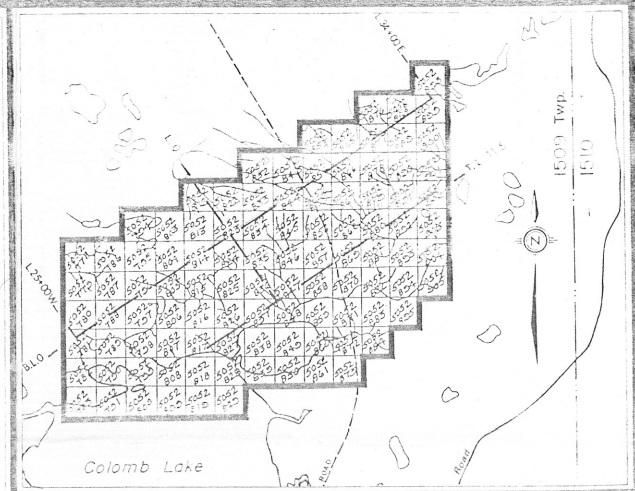
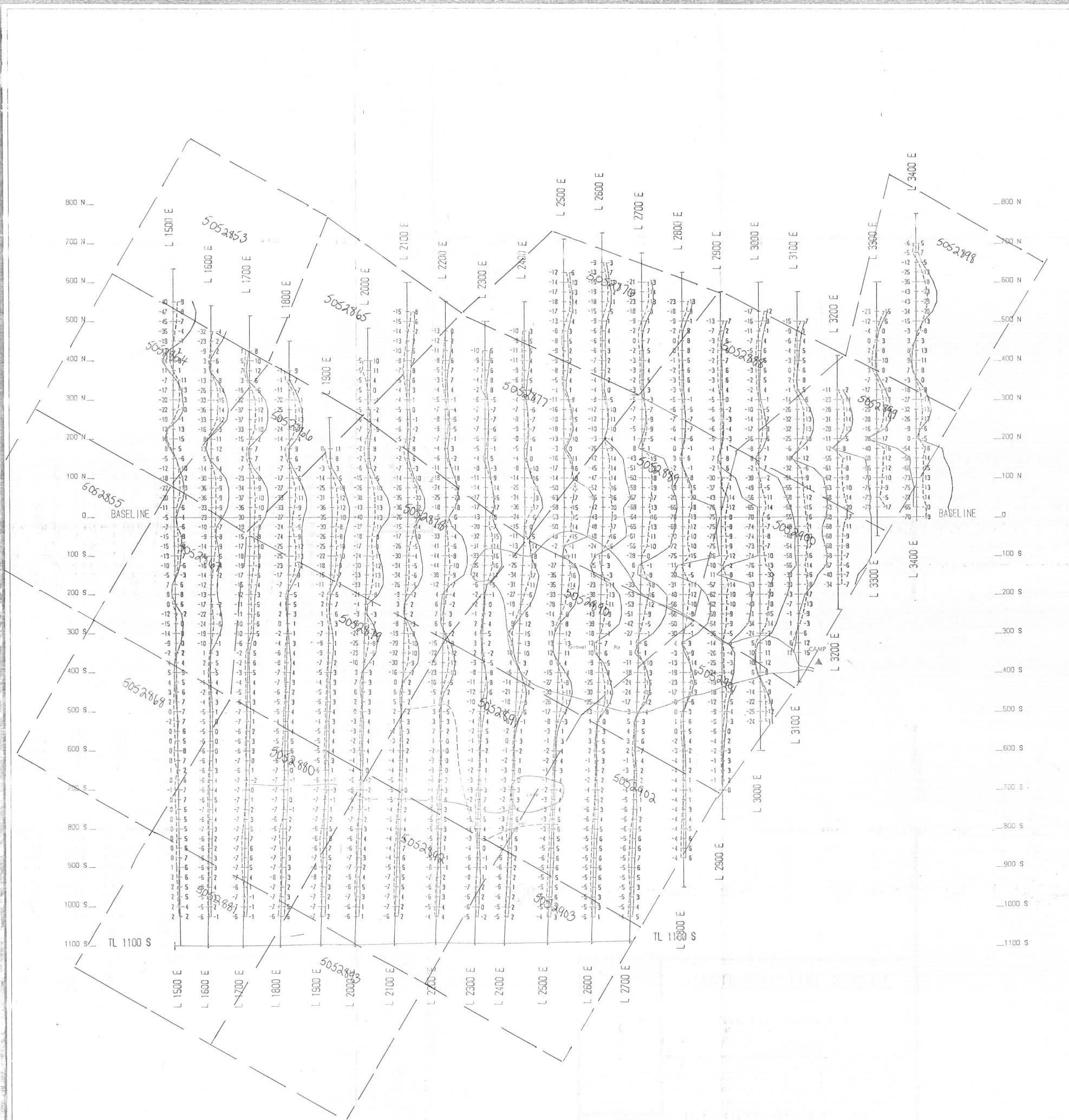
FOR
Teck Exploration Ltd.
Option - **Fancamp Resources Ltd.**
Fort Rupert Resources Ltd.

PROJECT: Marcaut Lake Property

SURVEYED BY: GILBERT LAMOTHE, DATE: Sept. 1991
DRAWN BY: Exploration Services, Royal SCALE: 1:50,000
G.L. GEOSERVICE INC.

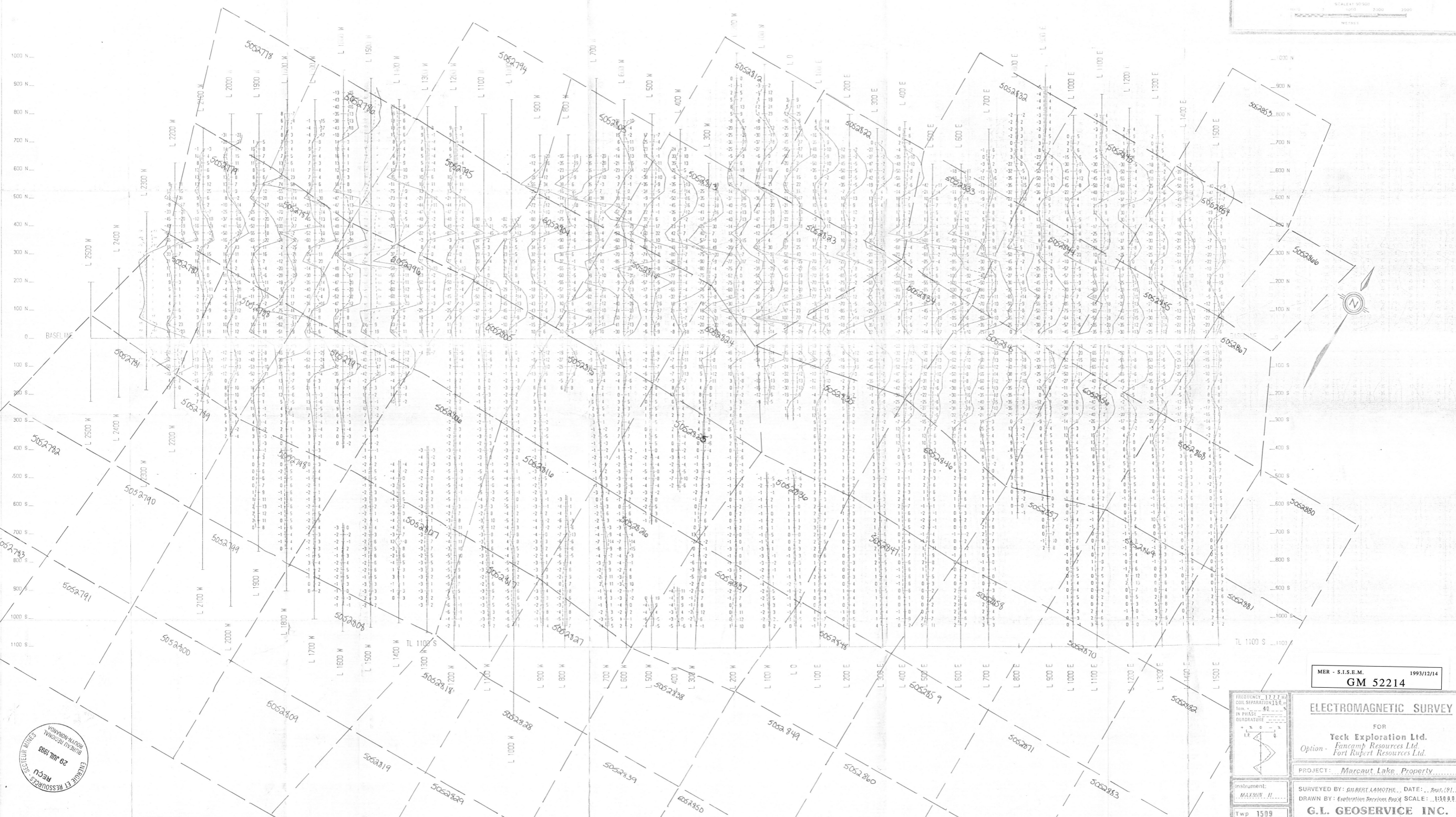
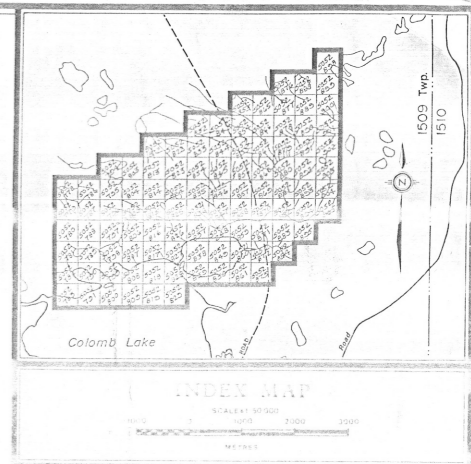
FREQUENCY: 4.4 kHz
COIL SEPARATION: 3.0 m
Form: 40
PACKAGE: QUADRATURE
Instrument: MAXMIN H
Twp: 1509

ENREGISTREMENT
BUREAU D'ARCADE
29 JUIL 1988
RECUS
SECURITEZ



ERGIE ET RESSOURCES - SECTEUR MINES
REÇU
29 JUIL 1993
BUREAU REGIONAL
ROUYN-NORANDA

MER - S.I.S.E.M. 1993/12/14 GM 52214	
FREQUENCY 1277 Hz COIL SEPARATION 150 m 1cm = 40 m IN PHASE QUADRATURE 	ELECTROMAGNETIC SURVEY FOR Teck Exploration Ltd. <i>Option - Fancamp Resources Ltd. Fort Rupert Resources Ltd.</i>
PROJECT <i>Marcaut Lake Property</i>	
SURVEYED BY <i>GILBERT LAMOTHE</i> DATE <i>March '92</i> DRAWN BY <i>Exploration Services Regd</i> SCALE <i>1:5000</i>	
G.L. GEOSERVICE INC.	
TWP 1509	



MER - S.I.S.E.M. 1993/12/14
GM 52214

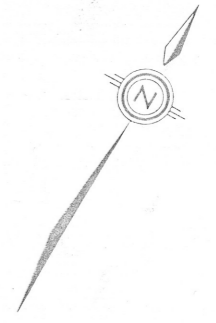
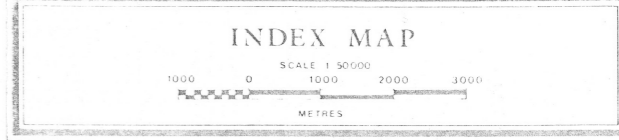
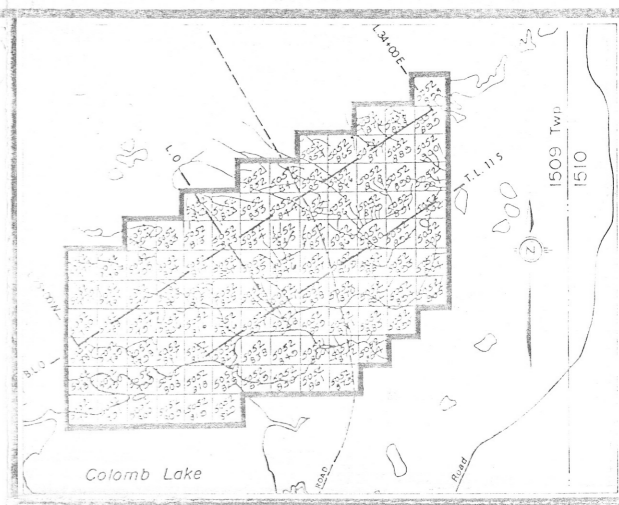
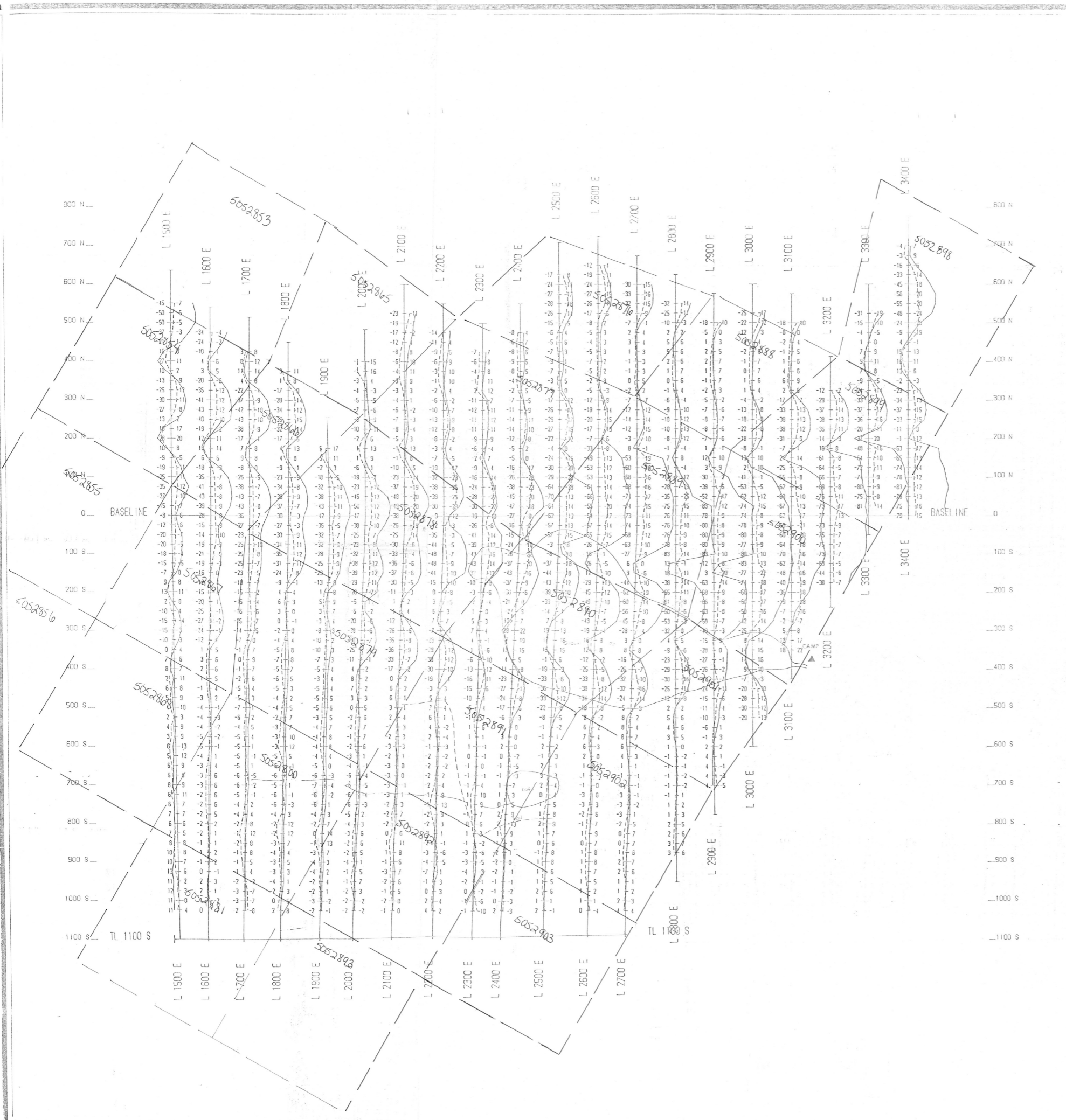
ELECTROMAGNETIC SURVEY

FOR
Teck Exploration Ltd.
Option - Fancamp Resources Ltd.
Fort Rupert Resources Ltd.

PROJECT: Marcaut Lake Property

Instrument:
MAXMIN II
Twp. 1509

SURVEYED BY: GILBERT LAMOUCHE DATE: Sept. 91
DRAWN BY: Exploration Services, Inc. SCALE: 1:5000
G.L. GEOSERVICE INC.



MER - S.I.S.E.M. BUREAU 1993/12/14
 GM 52214

FREQUENCY 3555 Hz
 COIL SEPARATION 150 m
 Icm = 40 A
 IN PHASE
 QUADRATURE
 L X O - X
 I P Q
 MAXMIN II
 1509

ELECTROMAGNETIC SURVEY

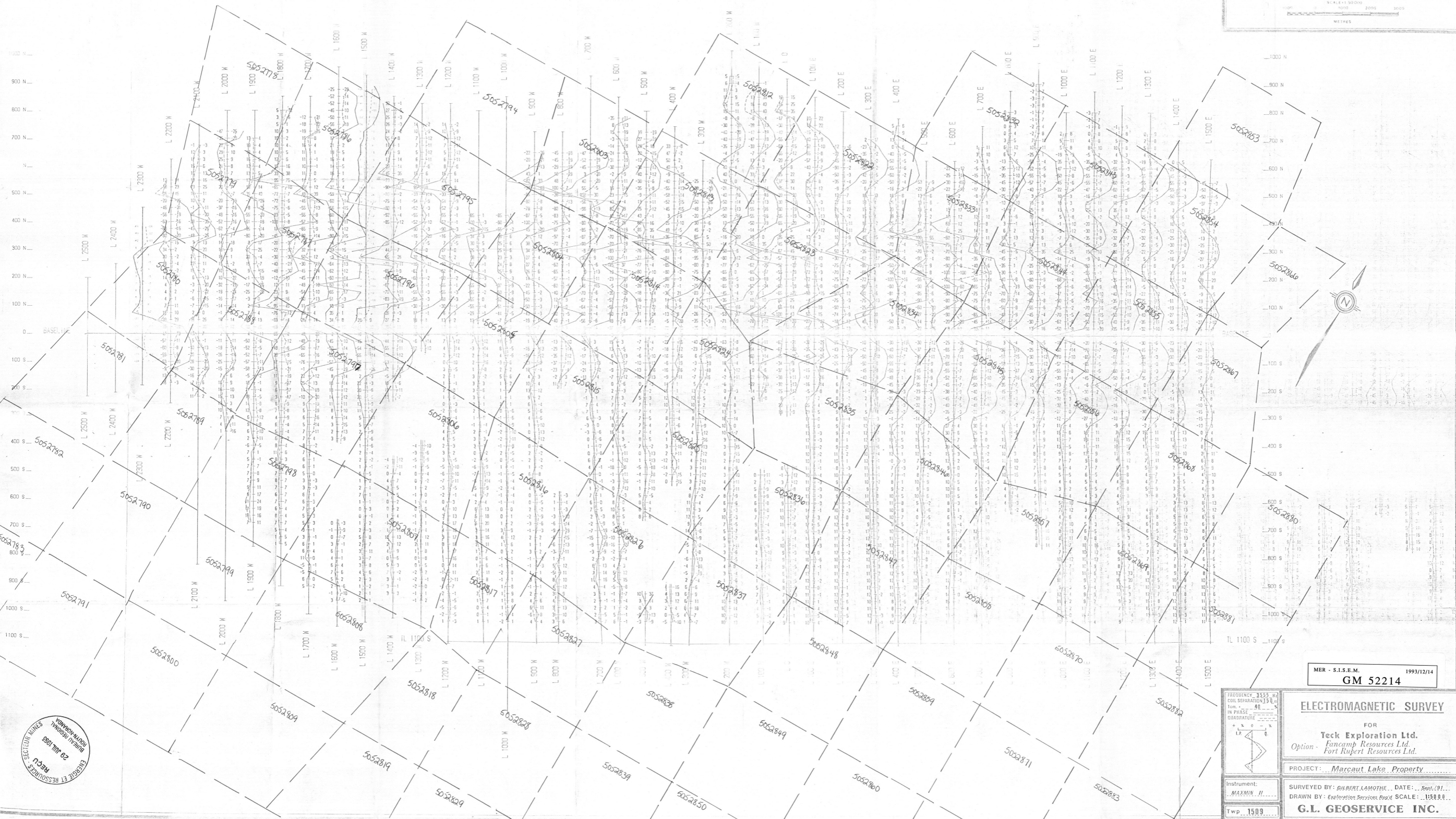
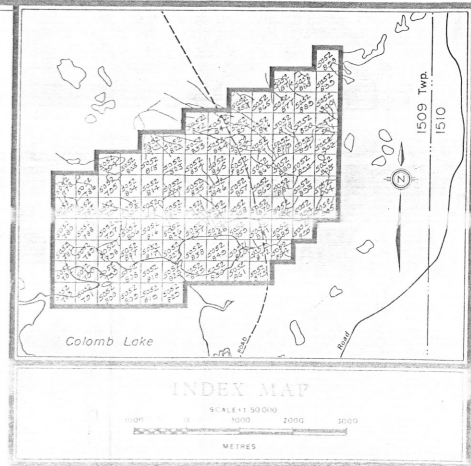
FOR

Teck Exploration Ltd.
 Option - Fancamp Resources Ltd.
 Fort Rupert Resources Ltd.

PROJECT Marçaut Lake Property

SURVEYED BY GILBERT LAMOTHE DATE March 92
 DRAWN BY Exploration Services Reg'd S.E.C. 15090

G.I. GEOSERVICE INC



29 JUIL 1993
BUREAU FEDERAL
D'HYDROLOGIE
RECU
ENERGIE ET RESSOURCES
SÉLECTION MARRS

MER - S.I.S.R.M. 1993/12/14
GM 52214

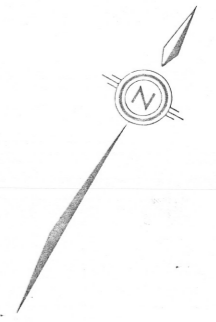
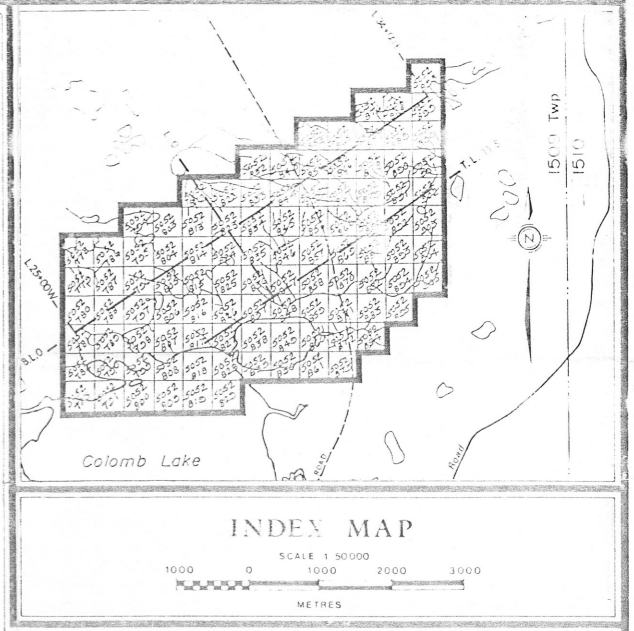
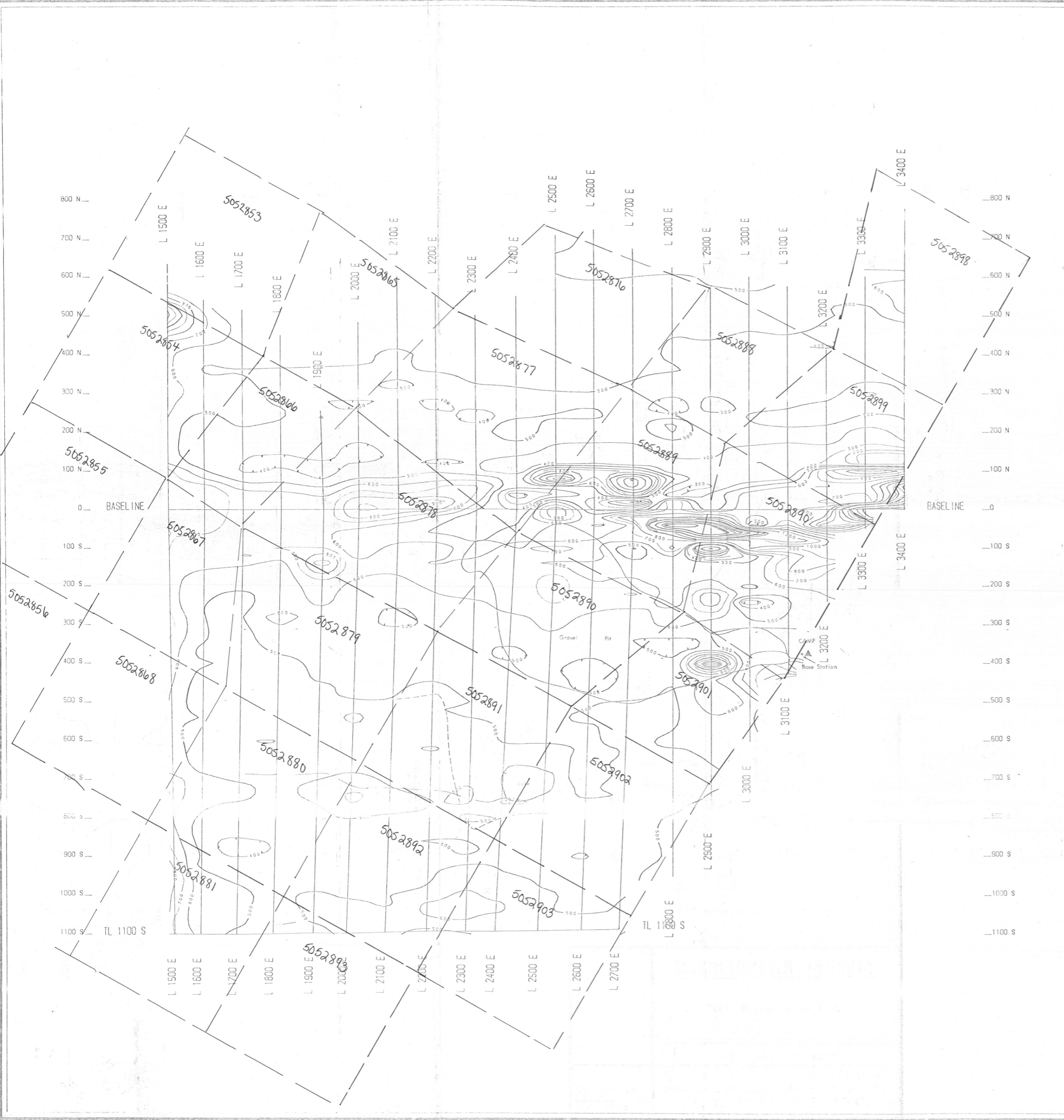
ELECTROMAGNETIC SURVEY

FOR
Teck Exploration Ltd.
Option - Fancamp Resources Ltd.
Fort Rupert Resources Ltd.

PROJECT: Marcaut Lake Property

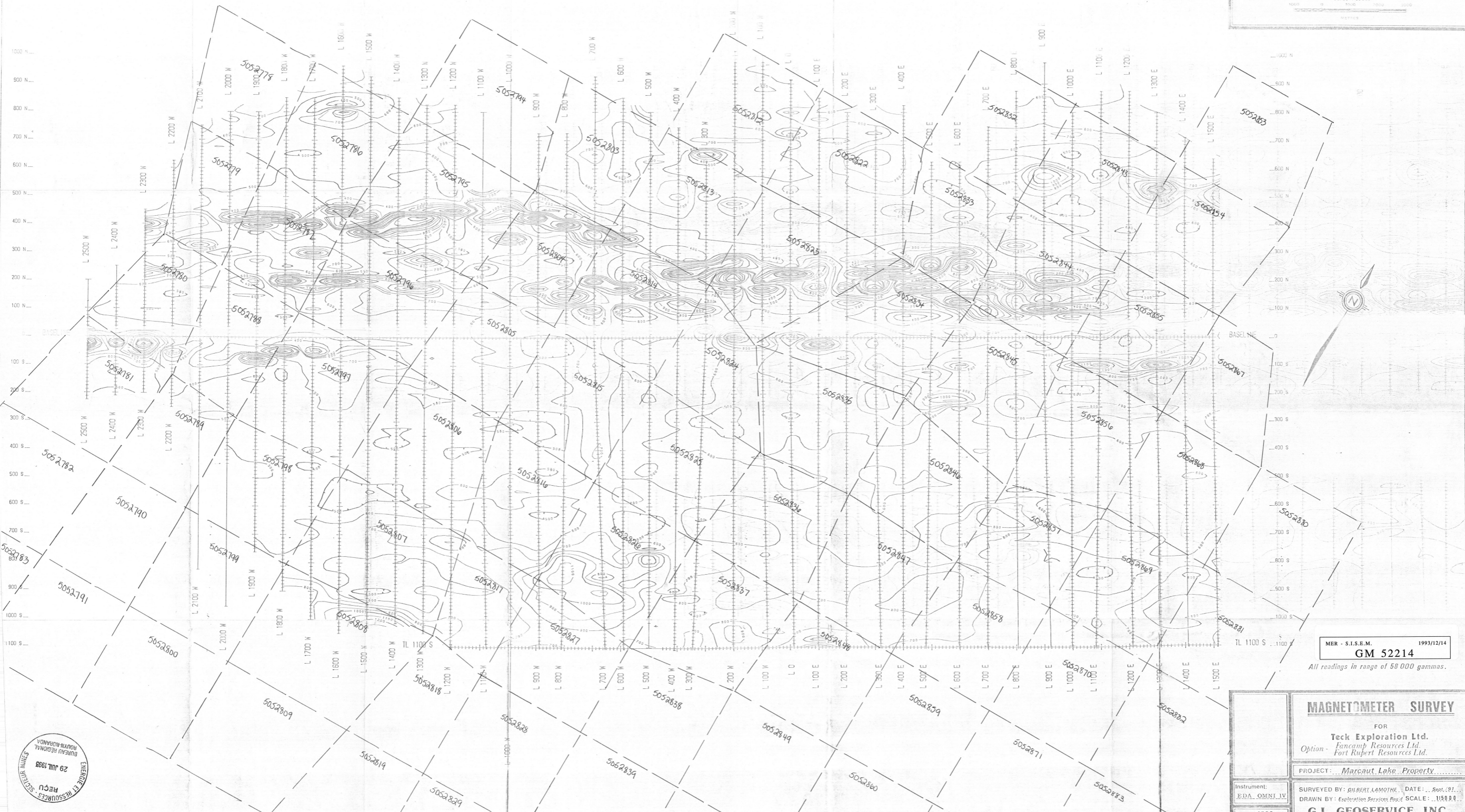
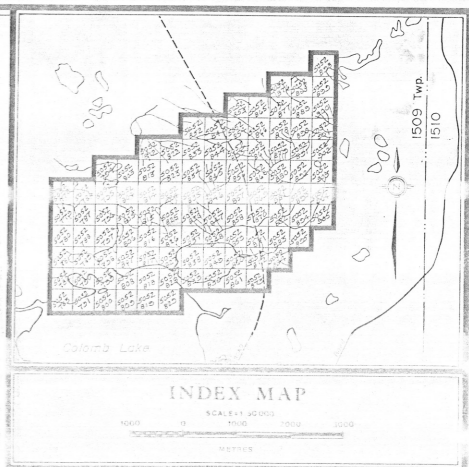
Instrument: MAXMIN II
Twp: 1509
SURVEYED BY: GILBERT LAMOTHE, DATE: Sept. 1991
DRAWN BY: Exploration Services Rep. 6, SCALE: 1:150,000

G.L. GEOSERVICE INC.



MER - S.I.S.E.M. 1993/12/14
GM 52214
 BUREAU REGIONAL ROUYN-NORANDA
 All readings in γ gammas.

MAGNETOMETER SURVEY	
FOR	
Teck Exploration Ltd.	
Option - Fancamp Resources Ltd. Fort Rupert Resources Ltd.	
PROJECT <u>Marcaut Lake Property</u>	
Instrument: <u>EDA OMNI PLUS</u>	SURVEYED BY: <u>GILBERT LAMOTHE</u> DATE: <u>March '92</u>
TWP <u>1509</u>	DRAWN BY: <u>Exploration Services Regal</u> SCALE: <u>1:5000</u>
G.L. GEOSERVICE INC.	



MER - S.I.S.E.M. 1993/12/14
GM 52214
All readings in range of 58 000 gammas.

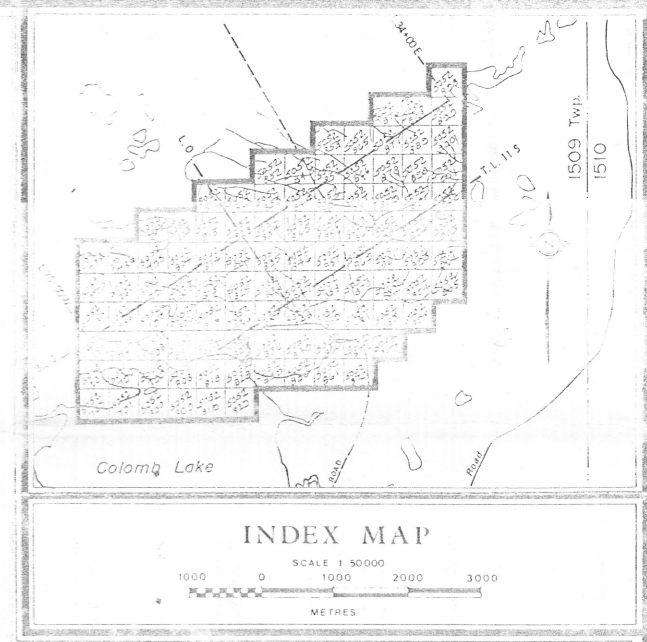
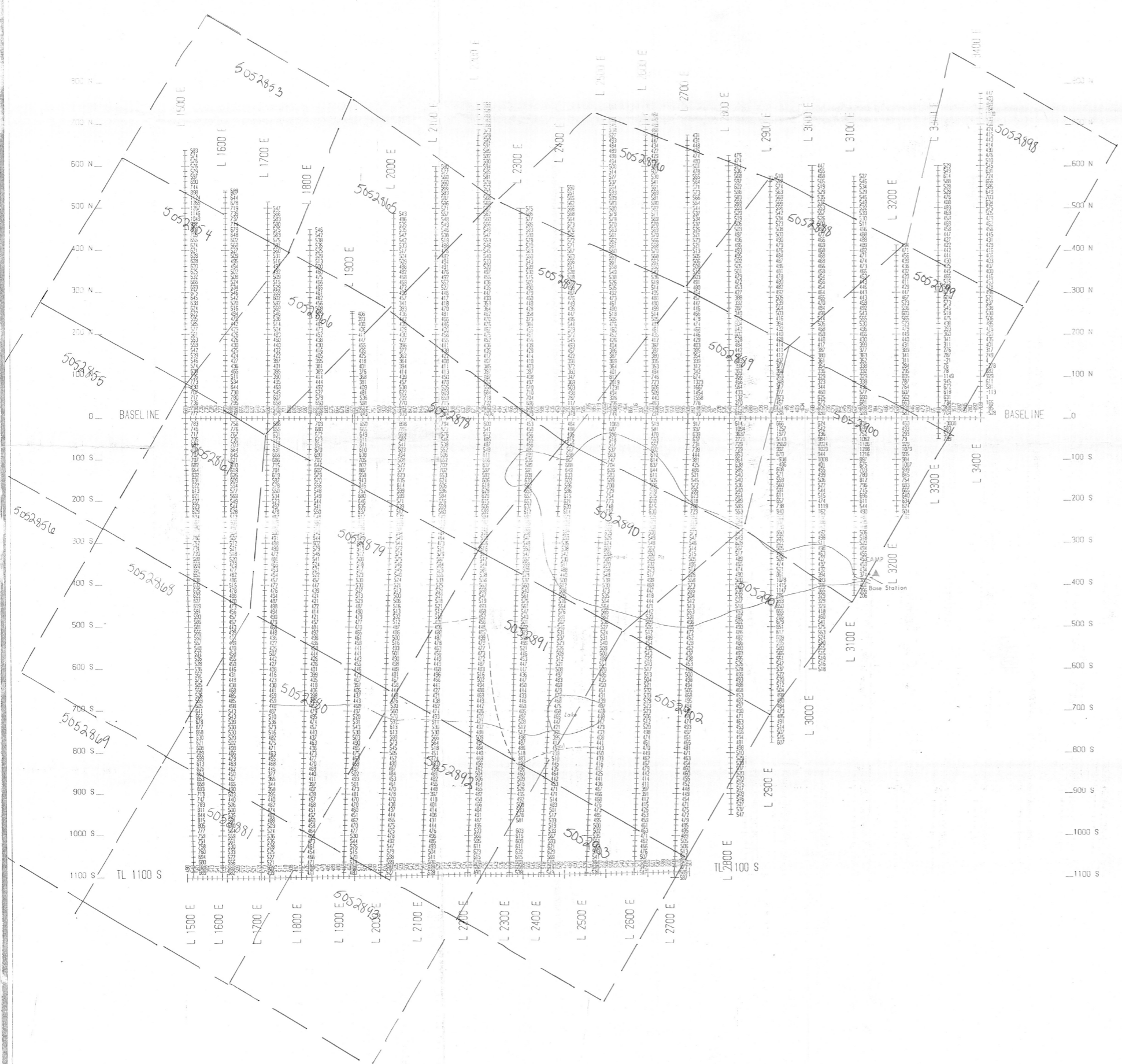
MAGNETOMETER SURVEY
FOR
Teck Exploration Ltd.
Option - Fancamp Resources Ltd.
Fort Rupert Resources Ltd.

PROJECT: Marcaut Lake Property

INSTRUMENT: EDA OMNI IV
SURVEYED BY: GILBERT LAMOTHE, DATE: Sept. 91
DRAWN BY: Exploration Services, Inc. SCALE: 1:50,000

G.L. GEOSERVICE INC.

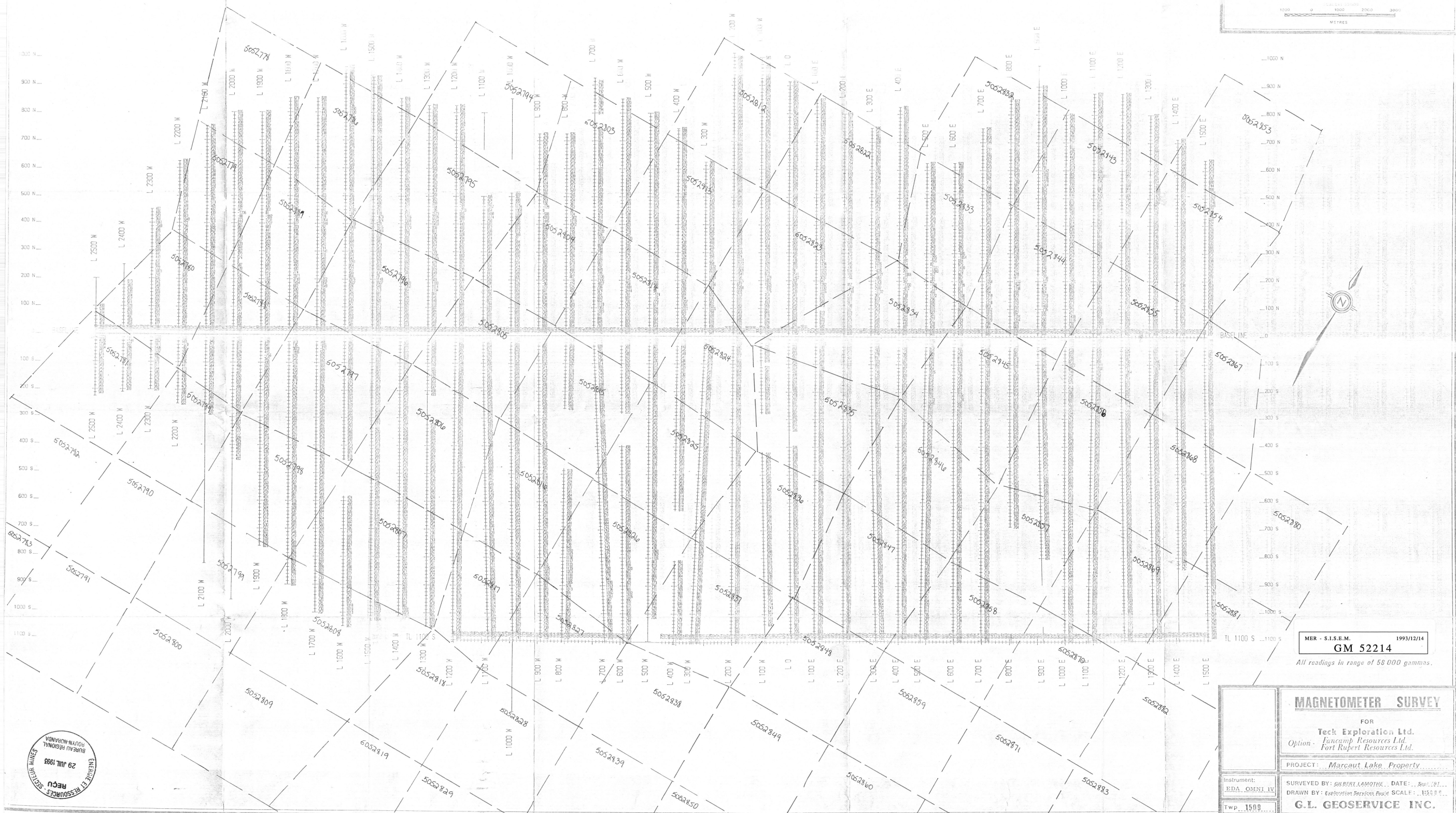
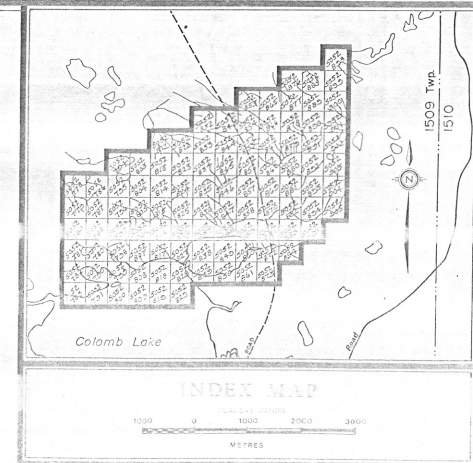
RECU ET RESSOURCES - SPECIALIER MARCAUT
29 JUIL 1993
BUREAU REGIONAL
ROUYAN-MIAMANDA



MER - S.I.S.E.M. 1993/12/14
GM 52214
 BUREAU REGIONAL ROUYN-NORANDA

All readings in range

MAGNETOMETER SURVEY	
FOR	
Teck Exploration Ltd.	
Option - Fancamp Resources Ltd. Fort Rupert Resources Ltd.	
PROJECT <u>Marcaut Lake Property</u>	
Instrument EDA OMNI PLUS	SURVEYED BY <u>GILBERT LAMOTHE</u> DATE <u>March '92</u>
TWP <u>1509</u>	DRAWN BY <u>Exploration Services Reg'd</u> SCALE <u>1:5000</u>
G.L. GEOSERVICE INC.	



MER - S.I.S.E.M. 1993/12/14
GM 52214
 All readings in range of 58 000 gammas.

MAGNETOMETER SURVEY
 FOR
Tect Exploration Ltd.
*Option - Fancamp Resources Ltd.
 Fort Rupert Resources Ltd.*
 PROJECT: *Marcaut Lake Property*
 SURVEYED BY: *GILBERT LAMOTHE*, DATE: *Sept. 1993*
 DRAWN BY: *Exploration Services Dept.* SCALE: 1:1500
G.L. GEOSERVICE INC.

ENTRÉE ET
 BUREAU REGIONAL
 29 JUIL 1993
 REÇU
 RESOURCES - SERVICE
 DES MINES