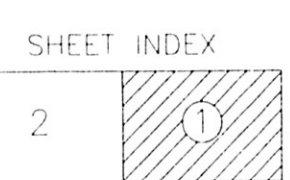


- LEGEND**
- 4 Syenite Intrusion
 - 3 Tobi Group Clastic Sediments
 - 2 Gabbro, Andesite, tuff, Local Iron Formation and Ferruginous Sediments
 - 1 Carbonate Volcanics, High MgO Basalts
 - Fault
 - Diamond Drill Hole
 - Reverse Circulation Borehole
 - Basal Till Hole
 - Diamond Drill Hole 1992
 - D-92-01

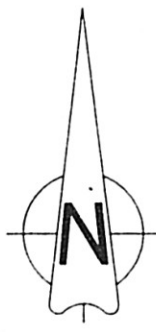


MER - S.I.S.E.M. 1993/03/26
 GM 51694
 BUREAU ET RESSOURCES MINES
 5 DEC. 1992
 Bureau régional Val d'Or

S.E.M. VIOR INC.

Project: DQUAY J.V.		Area: Douay Township, Québec	
CARTE DE COMPILATION			
Supervisor: B.R. Booth	Instrument:	Survey date:	SHEET: 1 of 2
Compiled by: B.R. Booth	Drawn by: L. Mazoué	Date drawn: Oct/91	FIGURE: 1 of 2
Scale: 1" = 800' (1:9600)	File: DOPC0ME.DWG	N.T.S. 32 E 09	Revised: D.K. SEPT. 92





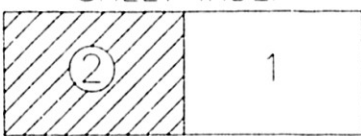
MER - S.I.S.E.M. 1993/03/26
GM 51694

ÉNERGIE ET RESSOURCES
SECTEUR MINES
15 DEC. 1992
Bureau régional Val d'Or

LEGEND

- 4 Syenite intrusion
- 3 Taibi Group Clastic Sediments
- 2 Gabbro, Andesite, Tuff, Local Iron Formation and Ferruginous Sediments
- 1 Cartwright Volcanics, High MgO Basalts
- ~ Fault
- 70588 Diamond Drill Hole
- 70589 Reverse Circulation Borehole
- T1 Basal Till Hole
- D-92-01 Diamond Drill Hole 1992

SHEET INDEX



S.E.M. VIOR INC.

Project: DOLAY J.V.		Area: Douay Township, Québec	
CARTE DE COMPILATION			SHEET 2 of 2
Supervisor: B.R. Booth	Instrument:	Survey date:	
Compiled by: B.R. Booth	Drawn by: L. Mazoud	Date drawn: Oct/91	Revised: D.K. SEPT. 92
Scale: 1" = 800' (1:5600)	File: DOPCOMVA	N.T.S. 32 E 09	

