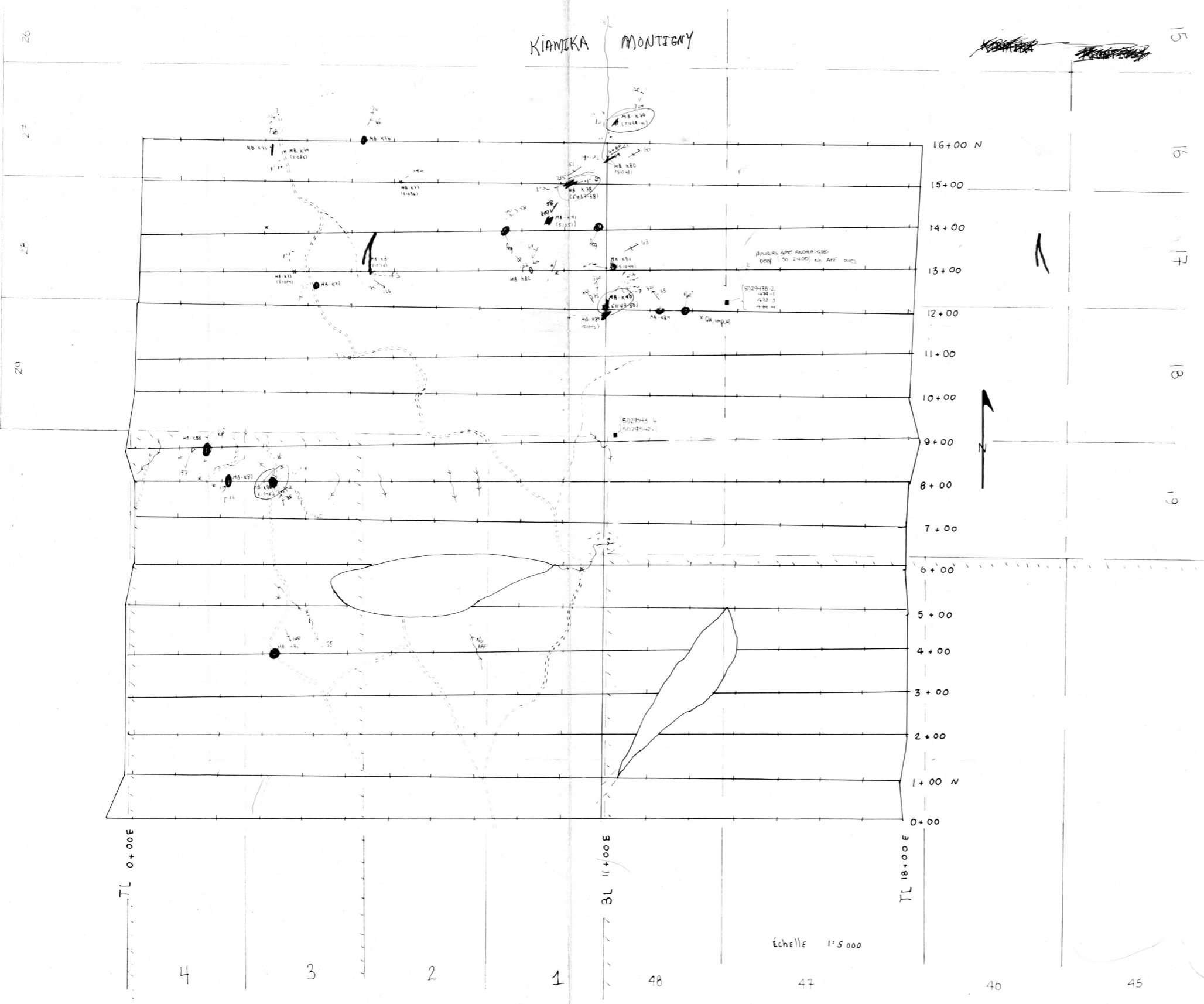
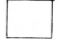





KIANIKA MONTJENY



Ministère de l'Énergie et des Ressources
 Division des données géoscientifiques
 DATE 2 AVR 1992
 NO GM 051088

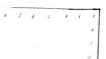

Lithologies:

- QUARTZITE 
- PARAGNEISS A Biotite 
- PEGMATITE 
- PHYROENITE (GNEISS) 

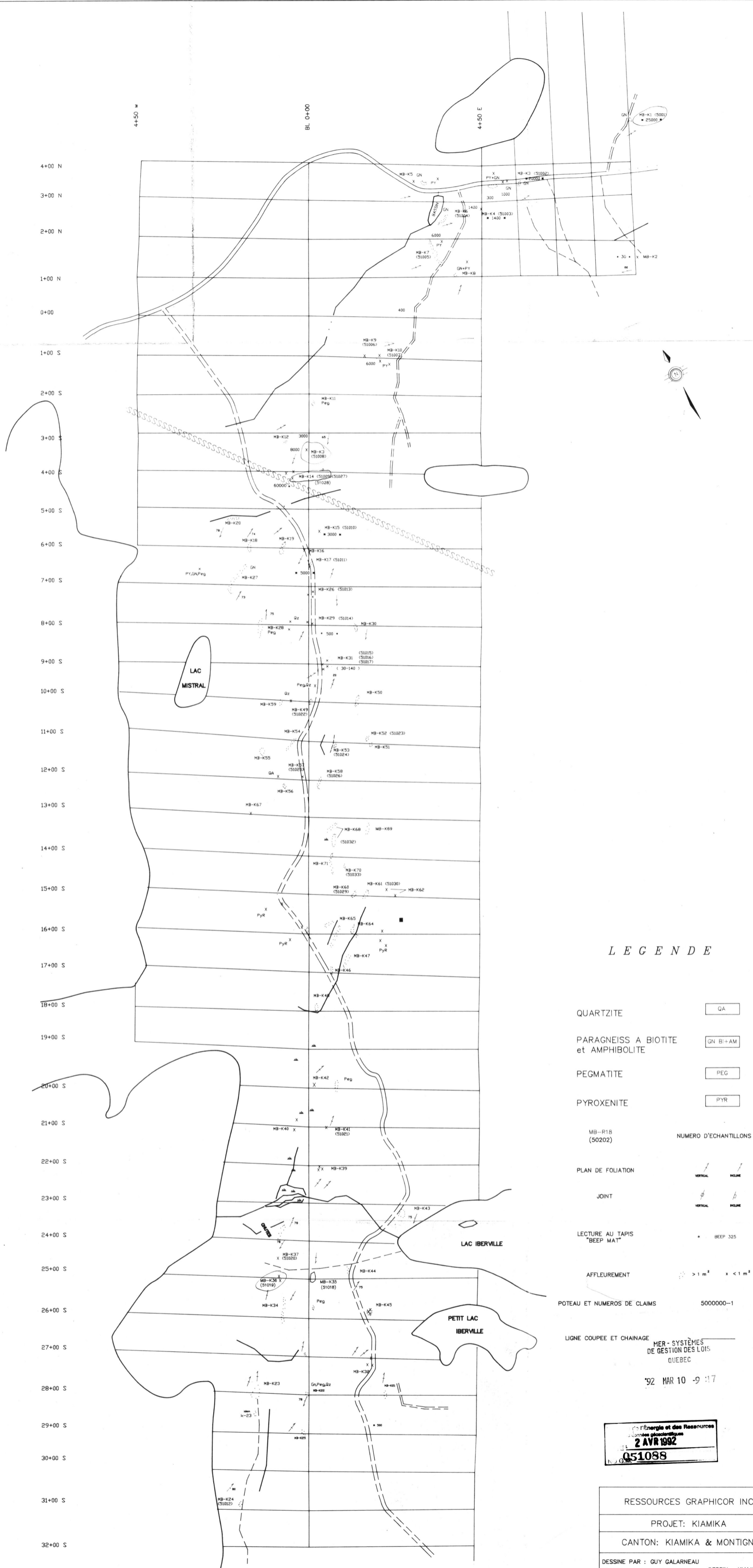
PRÉLIMINAIRE

ANALYSES 20 JgR F-

STRUCTURE
 / S1
 / S2
 / diaclase

 PROPRIÉTÉS PRIVÉES
 TERRES DE LA COURONNE

ÉCHELLE 1:5000



LEGENDE

- QUARTZITE QA
- PARAGNEISS A BIOTITE
et AMPHIBOLITE GN BI+AM
- PEGMATITE PEG
- PYROXENITE PYR
- MB-R18 (50202) NUMERO D'ECHANTILLONS
- PLAN DE FOLIATION
- JOINT
- LECTURE AU TAPIS
"BEEP MAT" BEEP 325
- AFFLEUREMENT > 1 m² x < 1 m²
- POTEAU ET NUMEROS DE CLAIMS 5000000-1
- LIGNE COUPEE ET CHAINAGE MER - SYSTEMES
DE GESTION DES LOIS
QUEBEC

Energie et des Ressources
 2 AVR 1992
 Q51088

RESSOURCES GRAPHICOR INC.
PROJET: KIAMIKA
CANTON: KIAMIKA & MONTIGNY
DESSINE PAR : GUY GALARNEAU GEOLOGIE PAR : MARIO BLAIN DESSIN : KIAMIKA.DWG
ECHELLE : 1:5000 0 100 200 (m)