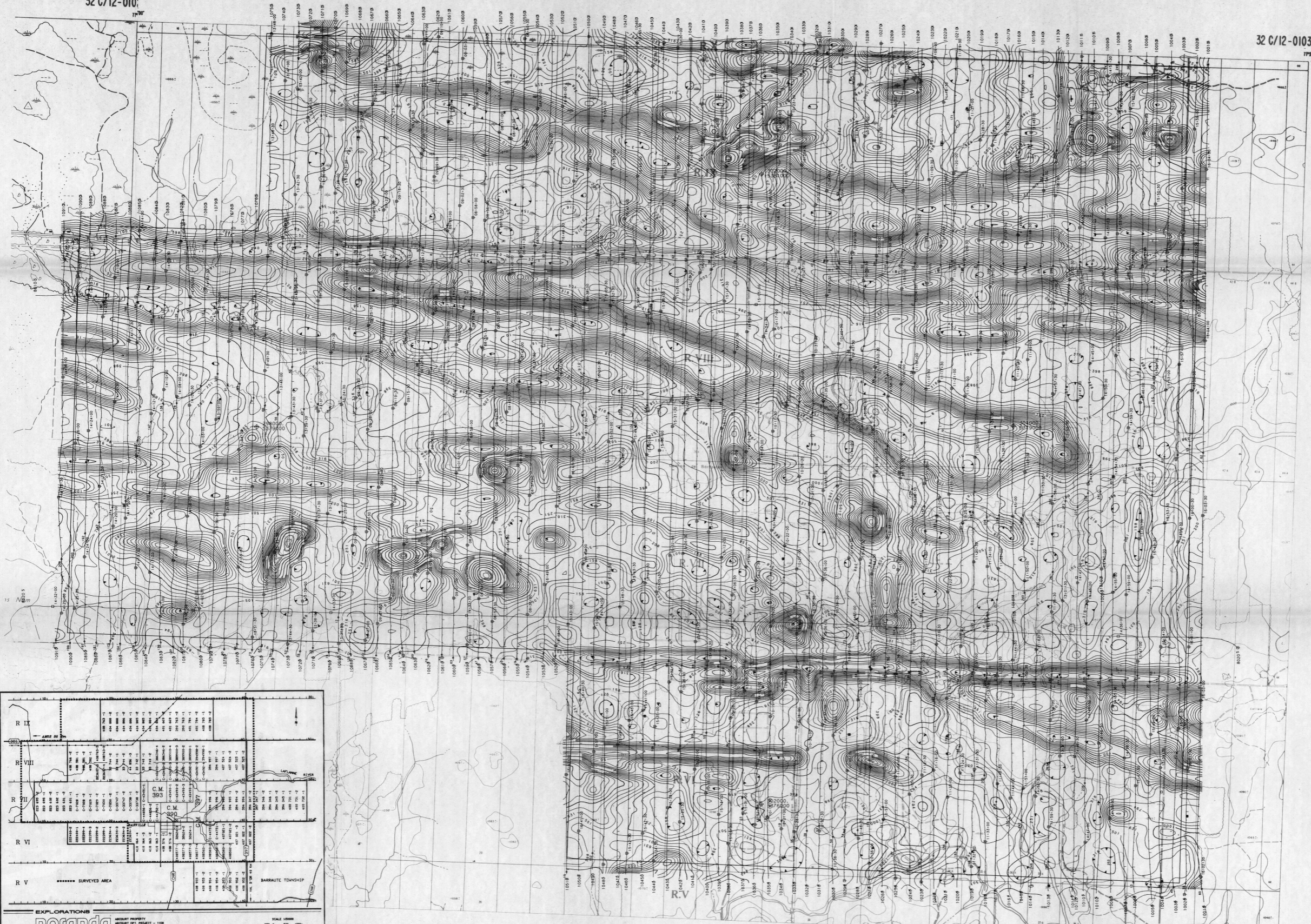


32 C/12-010

32 C/12-0103



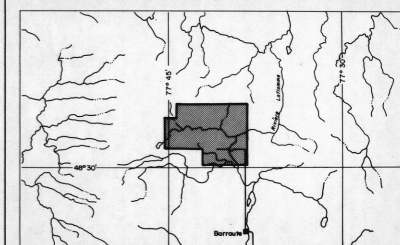
**Flight Path**  
 Navigation and recovery using a Motorola Mini-Ranger (MRS 111) navigation system.  
 Average terrain clearance 60m  
 Average line spacing 100m

**Apparent Resistivity**  
 Calculated from 935 Hz coaxial EM response assuming a 200 m conductive layer.  
 Contouring in ohm-m at logarithmic intervals.  
 Sensor elevation 30m

Map contours are multiples of those listed below

- 0.1 log(ohm-m)
- 0.5 log(ohm-m)
- 1.0 log(ohm-m)
- 5.00 log(ohm-m)

Ministère de l'Énergie et des Ressources  
 Directeur des cartes géologiques  
 DATE: 18 AVR 1991  
 NOGM 50183



R IX	108 732-11	108 732-12	108 732-13	108 732-14	108 732-15	108 732-16	108 732-17	108 732-18	108 732-19	108 732-20
R VIII	108 732-21	108 732-22	108 732-23	108 732-24	108 732-25	108 732-26	108 732-27	108 732-28	108 732-29	108 732-30
R VII	108 732-31	108 732-32	108 732-33	108 732-34	108 732-35	108 732-36	108 732-37	108 732-38	108 732-39	108 732-40
R VI	108 732-41	108 732-42	108 732-43	108 732-44	108 732-45	108 732-46	108 732-47	108 732-48	108 732-49	108 732-50
R V	108 732-51	108 732-52	108 732-53	108 732-54	108 732-55	108 732-56	108 732-57	108 732-58	108 732-59	108 732-60

EXPLORATIONS NORANDA  
 NORVAL DISTRICT  
 SCALE 1:5000  
 0 500 1000  
 FILE NO 11 321  
 NO. INF. 0289349

EXPLORATIONS NORANDA LIMITEE

APPARENT RESISTIVITY CONTOURS ( 935 Hz )

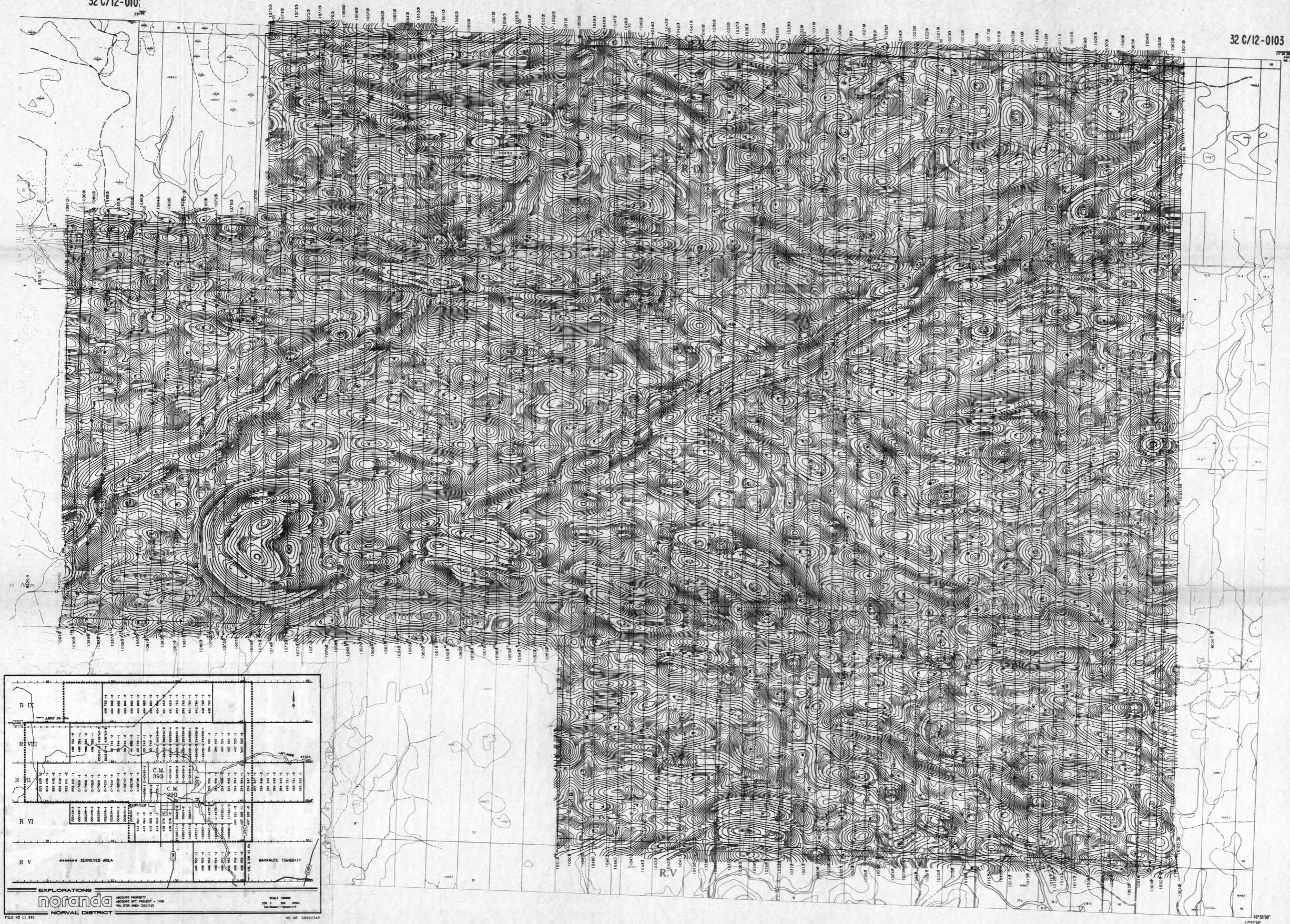
ABCOURT OPTION  
 QUEBEC

SCALE 1:10,000  
 0 300 600 1200 2400 Feet  
 0 100 200 500 1000 Metres

AERODAT LIMITED  
 DATE: NOVEMBER 1990  
 NTS No: 32C/12  
 MAP No: 7 J9084 - 1

32 C/12-010

32 C/12-0103



**Flight Path**

Navigation and recovery using a Motorola Mini-Ranger (MRS 111) navigation system.  
Average terrain clearance 60m  
Average line spacing 100m

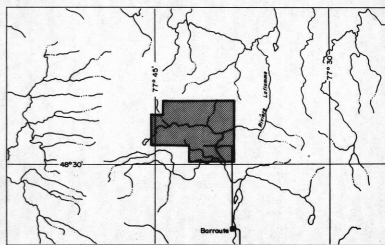
**Vertical Gradient**

Vertical Magnetic Gradient calculated from the total field magnetic intensity in nT/m.  
Cesium high sensitivity magnetometer.  
Sensor elevation 45m

Map contours are multiples of those listed below

- 0.25 nT
- 1.00 nT
- 5.00 nT
- 25.00 nT

Ministère de l'Énergie et des Ressources  
Division des services géomatiques  
DATE: 18 AVR 1991  
NO. G.M. 50153



R IX	488 734 -1	488 734 -2	488 734 -3	488 734 -4	488 734 -5	488 734 -6	488 734 -7	488 734 -8	488 734 -9	488 734 -10	488 734 -11	488 734 -12	488 734 -13	488 734 -14	488 734 -15	488 734 -16	488 734 -17	488 734 -18	488 734 -19	488 734 -20
R VIII	488 734 -21	488 734 -22	488 734 -23	488 734 -24	488 734 -25	488 734 -26	488 734 -27	488 734 -28	488 734 -29	488 734 -30	488 734 -31	488 734 -32	488 734 -33	488 734 -34	488 734 -35	488 734 -36	488 734 -37	488 734 -38	488 734 -39	488 734 -40
R VII	488 734 -41	488 734 -42	488 734 -43	488 734 -44	488 734 -45	488 734 -46	488 734 -47	488 734 -48	488 734 -49	488 734 -50	488 734 -51	488 734 -52	488 734 -53	488 734 -54	488 734 -55	488 734 -56	488 734 -57	488 734 -58	488 734 -59	488 734 -60
R VI	488 734 -61	488 734 -62	488 734 -63	488 734 -64	488 734 -65	488 734 -66	488 734 -67	488 734 -68	488 734 -69	488 734 -70	488 734 -71	488 734 -72	488 734 -73	488 734 -74	488 734 -75	488 734 -76	488 734 -77	488 734 -78	488 734 -79	488 734 -80
R V	488 734 -81	488 734 -82	488 734 -83	488 734 -84	488 734 -85	488 734 -86	488 734 -87	488 734 -88	488 734 -89	488 734 -90	488 734 -91	488 734 -92	488 734 -93	488 734 -94	488 734 -95	488 734 -96	488 734 -97	488 734 -98	488 734 -99	488 734 -100

EXPLORATIONS NORANDA  
noranda  
NORVAL DISTRICT

ABOURT PROPERTY  
ABOURT OPT. PROJECT - 108  
N.L. 978 AREA (1987/12)

SCALE: 1:110,000  
250 500 1000 2000 4000 Feet  
0 100 200 500 1000 Metres

NO. INF. 0899348

EXPLORATIONS NORANDA LIMITEE

CALCULATED VERTICAL MAGNETIC GRADIENT

ABOURT OPTION

QUEBEC

SCALE 1:110,000  
2500 Feet  
1000 Metres

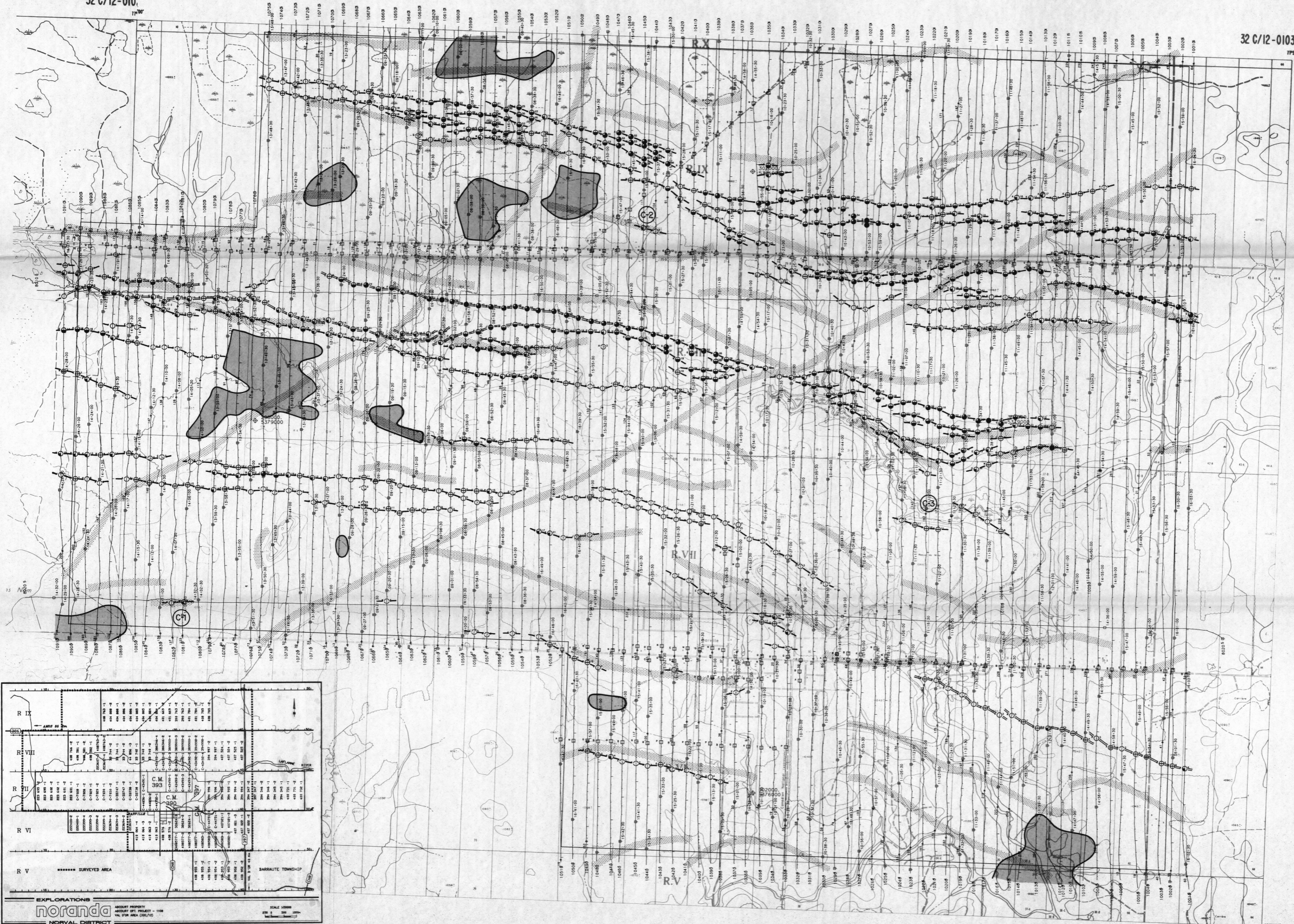
AERODAT LIMITED

DATE: NOVEMBER 1990  
NTS No: 32C/12  
MAP No: 5

J8084 - 1

32 C/12-010

32 C/12-0103



### Flight Path

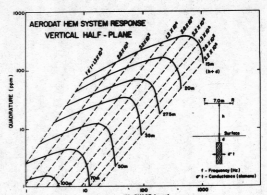
Navigation and recovery using a Motorola Mini-Ranger (MRS 111) navigation system  
 Average terrain clearance 60m  
 Average line spacing 100m

### EM Anomalies

- Conductivity Thickness (mhos)
  - 0 - 1
  - 1 - 2
  - 2 - 4
  - 4 - 8
  - 8 - 15
  - 15 - 30
  - > 30
- EM Anomaly A: 935 Hz  
 thickness 11000 ft  
 Conductivity thickness  
 1.7 mS (See Cont.)

### INTERPRETATION LEGEND

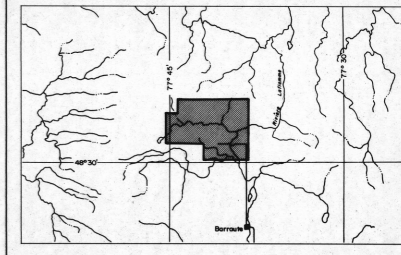
- Conductor Axis
- Conductor Axis with 60 Hz
- Magnetic Axis
- Isolated areas with apparent resistivity less than 30 ohm.m.
- Conductor Number



Ministère de l'Énergie et des Ressources  
 Ministère des Ressources géologiques  
 DATE: 13 AVR 1991  
 NO. 04: 50183

R IX		C 93	
R VIII		C 92	
R VII		C 91	
R VI		C 90	
R V		C 89	

EXPLOIRATIONS NORANDA  
 NORVAL DISTRICT  
 BARRAUTE TOWNSHIP



EXPLOIRATIONS NORANDA LIMITEE

INTERPRETATION

ABCOURT OPTION

QUEBEC

SCALE 1:10,000

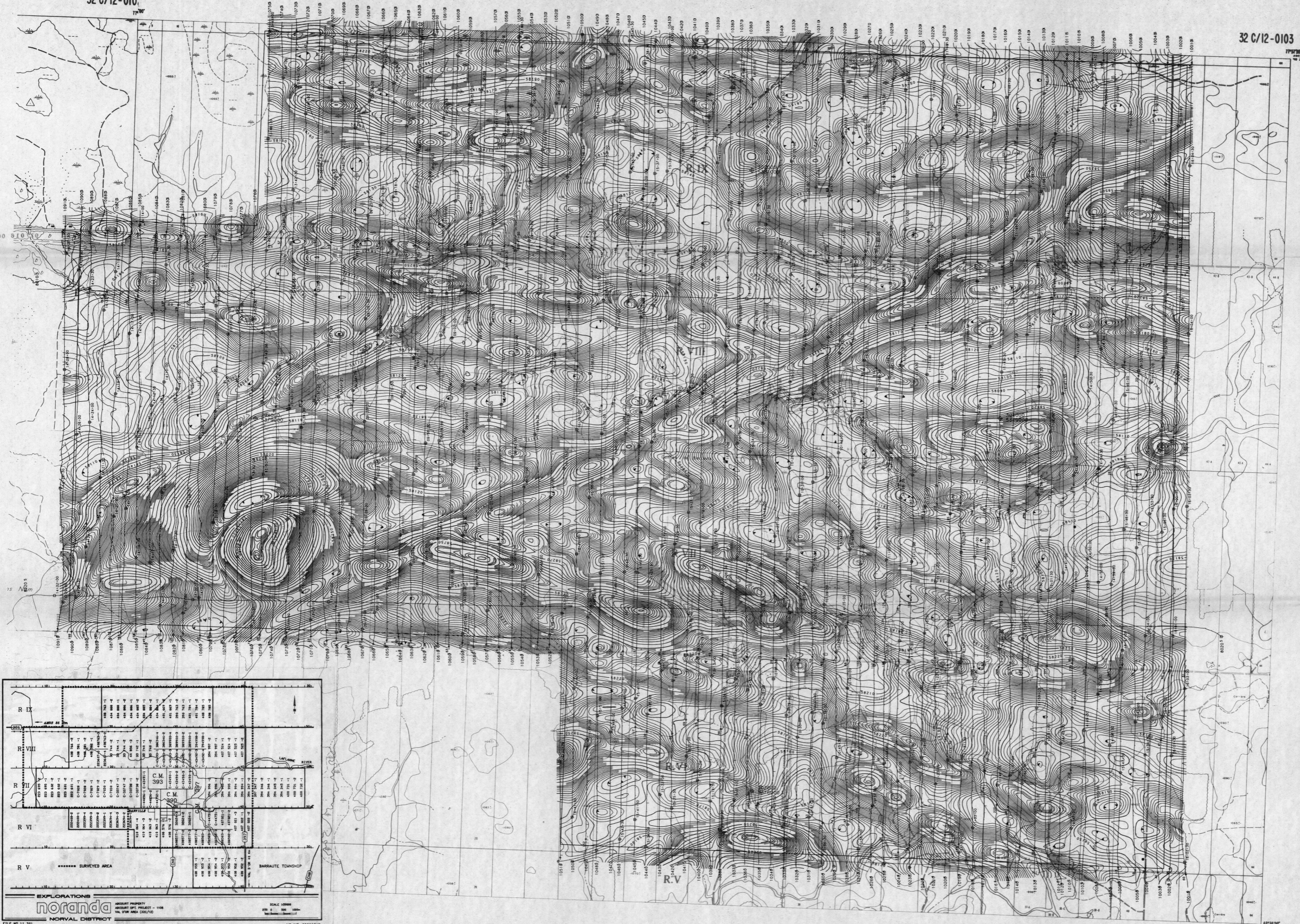
0 300 600 1200 2400 Feet  
 0 100 200 400 800 1000 Metres

DATE: NOVEMBER 1990  
 NTS No: 32C/12  
 MAP No: 3 J9084 - 1

AERODAT LIMITED

32 C/12-010

32 C/12-0103



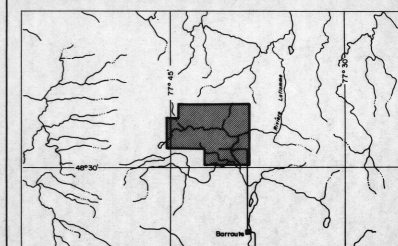
**Flight Path**  
 Navigation and recovery using a Motorola Mini-Ranger (MRS 111) navigation system.  
 Average terrain clearance 50m  
 Average line spacing 100m

**Magnetics**  
 Total Field Magnetic Intensity Contours in nT.  
 Caesium high sensitivity magnetometer.  
 Sensor elevation 45m

Map contours are multiples of those listed below:  
 2 nT  
 10 nT  
 50 nT  
 250 nT  
 1000 nT

Ministère de l'Énergie et des Ressources  
 Direction des Géosciences  
 DATE: 18 AVR 1991  
 NOGM: 50153

R IX	100 000 - 1	100 000 - 2	100 000 - 3	100 000 - 4	100 000 - 5	100 000 - 6	100 000 - 7	100 000 - 8	100 000 - 9	100 000 - 10
R VIII	100 000 - 11	100 000 - 12	100 000 - 13	100 000 - 14	100 000 - 15	100 000 - 16	100 000 - 17	100 000 - 18	100 000 - 19	100 000 - 20
R VII	100 000 - 21	100 000 - 22	100 000 - 23	100 000 - 24	100 000 - 25	100 000 - 26	100 000 - 27	100 000 - 28	100 000 - 29	100 000 - 30
R VI	100 000 - 31	100 000 - 32	100 000 - 33	100 000 - 34	100 000 - 35	100 000 - 36	100 000 - 37	100 000 - 38	100 000 - 39	100 000 - 40
R V	100 000 - 41	100 000 - 42	100 000 - 43	100 000 - 44	100 000 - 45	100 000 - 46	100 000 - 47	100 000 - 48	100 000 - 49	100 000 - 50



**EXPLORATIONS NORANDA LIMITEE**

**TOTAL FIELD MAGNETIC CONTOURS**

**ABCOURT OPTION**

**QUEBEC**

SCALE 1:10,000  
 0 300 600 900 1200 1500 1800 2100 2400 Feet  
 0 100 200 300 400 500 600 700 800 900 1000 Metres

**AERODAT LIMITED**

DATE: NOVEMBER 1990  
 NTS No: 32C/12  
 MAP No: 4 JS084 - 1