

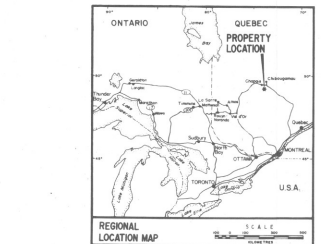
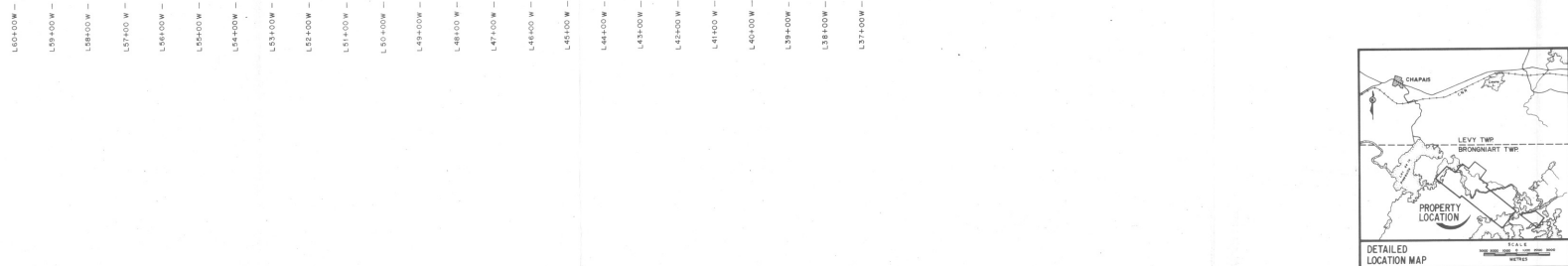
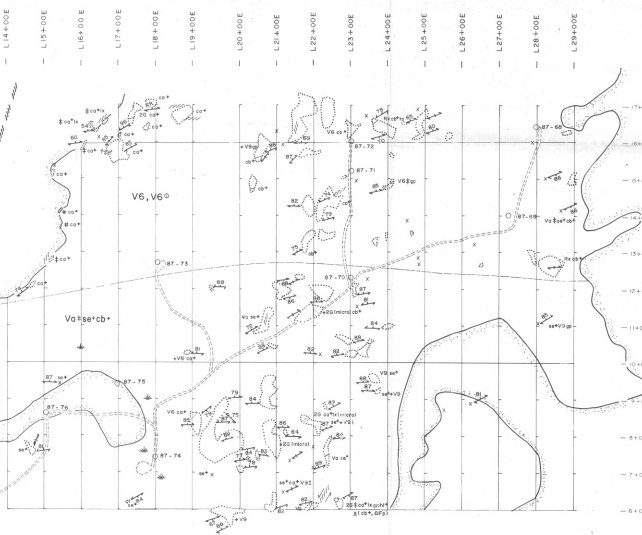
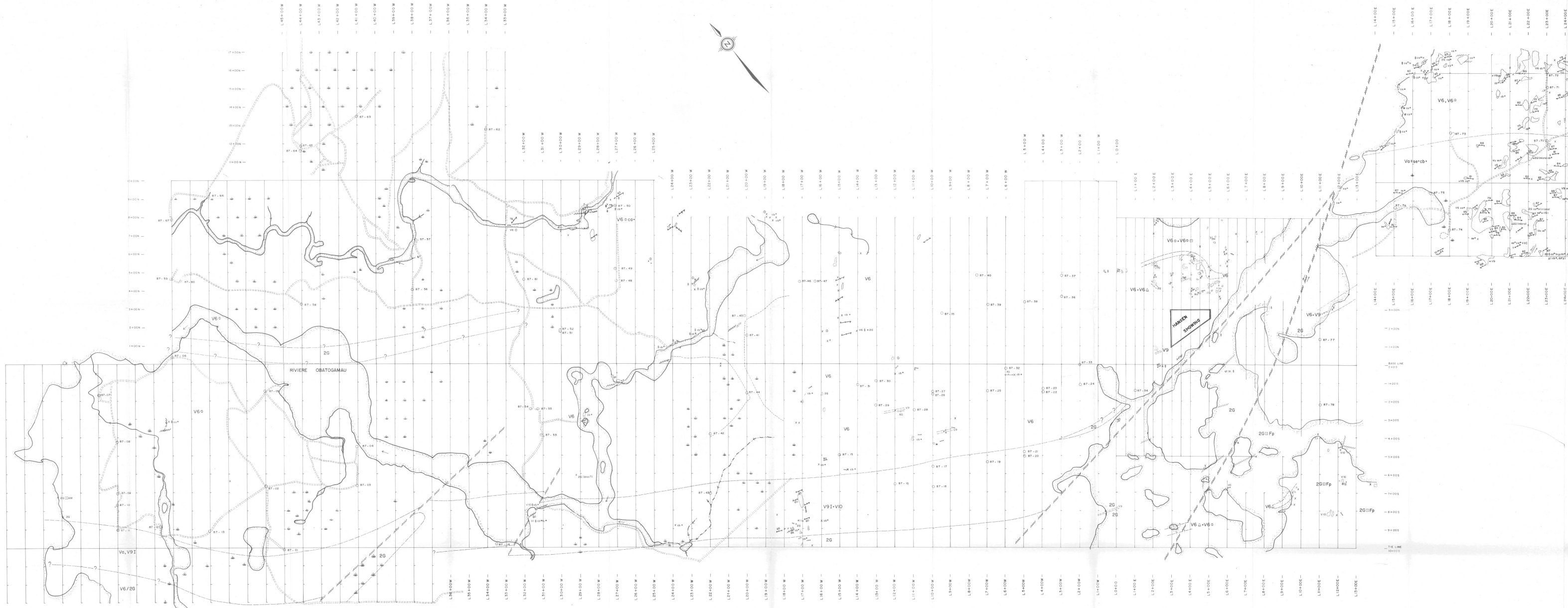
Ministère de l'Énergie et des Ressources
Service de la Géomatique
Date: 8/10/2008
No. GM: 17395



CORPORATION FALCONBRIDGE
COPPER EXPLORATION
ACHATES PROPERTY
CARTE DE CLAIMS

Project No: C-971 By: G. Sicler, P. Sibley
Scale: 1:5000 Drawn: MPH
Drawing No: Date: June, 1987





LEGENDE

TOPOGRAPHIQUE

- morécage
- chemin
- rivière
- étang
- contour du lac
- trou de forage de mort-terrain
- ruisseau

GÉOLOGIQUE

Lithologie:

- V10 tufs à blocs
- V9 tuf
- V5 andésite
- V volcanite indéterminée
- 2G gabbro
- Recd* roche à carbonate de fer

Altération:

- cb* carbonate de fer
- ser* séricitisation
- chl* chloritisation
- cc* calcite

Composition:

- I intermédiaire
- o felsique

Textures:

- ci* cisailée
- pp* porphyrique
- fr* fracturée
- br* bréchique
- co* coarsine
- mi* microgrenue
- va* variolaire

Structures:

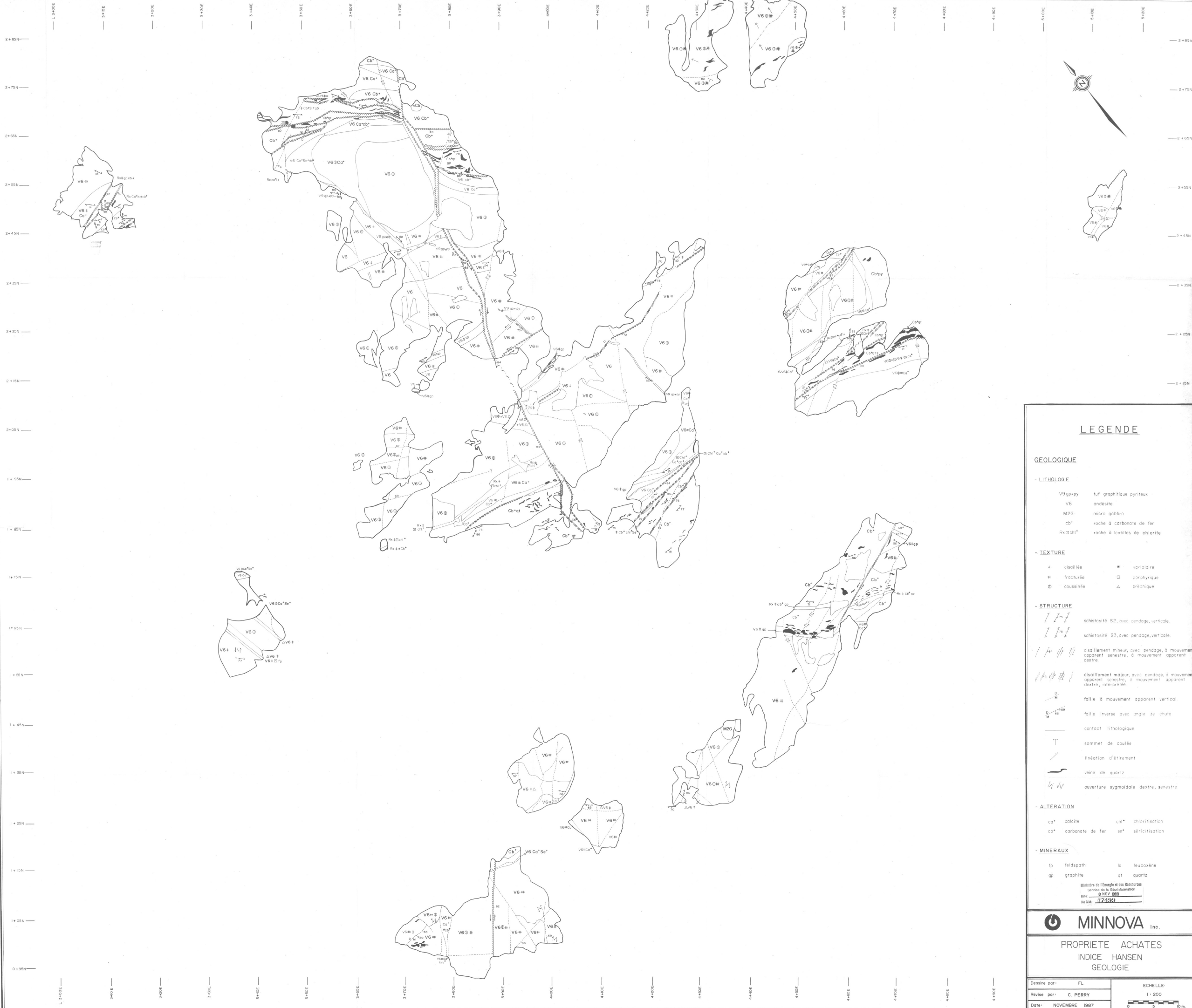
- S2 schistosité S2, avec pendage, verticale
- S3 schistosité S3, avec pendage, verticale
- ci* cisaillement, avec pendage
- ci* cisaillement apparent senestre, dextre
- ps* contact prismé
- ps* faille prismé

Minéraux:

- am amphibole
- fu fuchsite
- fp feldspath
- gr graphite
- ix leucoséne
- to tourmaline

Ministère de l'Énergie et des Ressources
Service de la Géoinformation
Date: 8 NOV 1988
No. G.L.: 17399

ÉCHELLE: 1:5000



LEGENDE

GEOLOGIQUE

- LITHOLOGIE

- V9gp-py tuf graphitique pyriteux
- V6 andésite
- M2G micro gabbro
- cb* roche à carbonate de fer
- RxChl* roche à lentilles de chlorite

- TEXTURE

- ∩ cisailée
- # fracturée
- ⊙ coussinée
- * variable
- porphyrique
- △ bréchique

- STRUCTURE

- schistosité S2, avec pendage, verticale
- schistosité S3, avec pendage, verticale
- cisaillement mineur, avec pendage, à mouvement apparent sénestre, à mouvement apparent dextre
- cisaillement majeur, avec pendage, à mouvement apparent sénestre, à mouvement apparent dextre, interprétée
- faille à mouvement apparent vertical
- faille inverse avec angle de chute
- contact lithologique
- sommet de coulée
- linéation d'étirement
- veine de quartz
- ouverture sigmoïdale dextre, sénestre

- ALTERATION

- ca* calcite
- chl* chloritisation
- cb* carbonate de fer
- se* séricitisation

- MINÉRAUX

- fp feldspath
- ix leucoxène
- gp graphite
- qt quartz

Ministère de l'Énergie et des Ressources
Service de la Géoinformation
Date: 8 NOV 1988
No. G.M.: 173392



PROPRIÉTÉ ACHATES
INDICE HANSEN
GÉOLOGIE

Dessiné par: FL
Revisé par: C. PERRY
Date: NOVEMBRE 1987

ÉCHELLE:
1:200
0 5 10 m



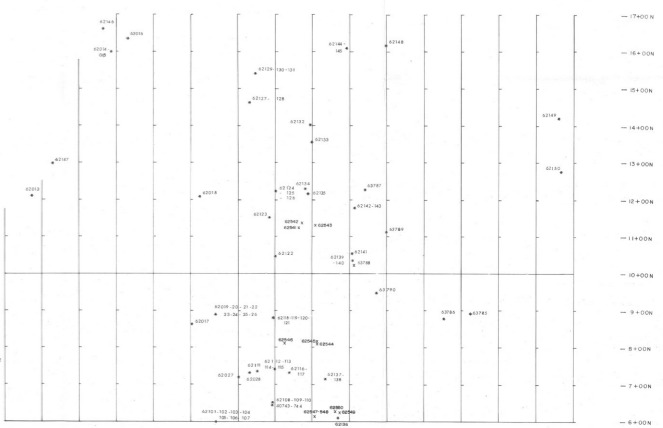
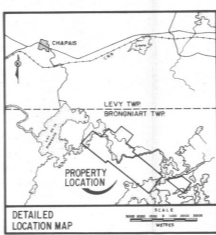
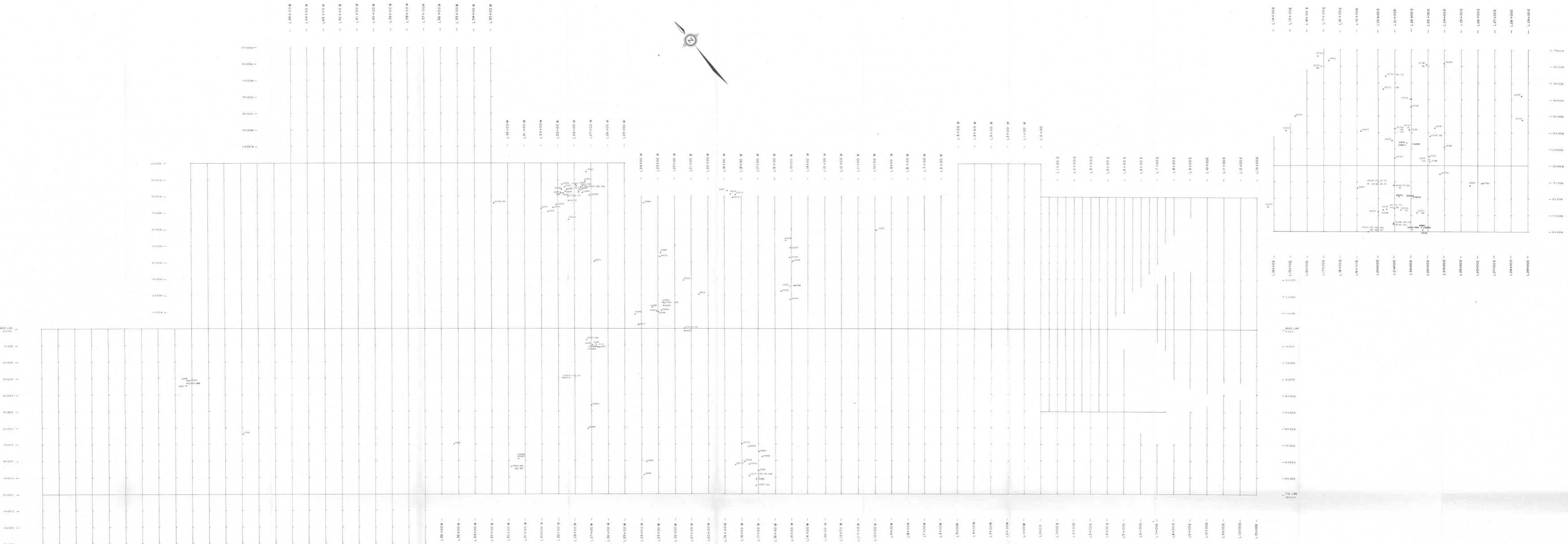
Ministère de l'Énergie et des Ressources
 Service de la Géoinformation
 Date: 8 NOV 1989
 No. G.M.: 174543

(522) 0,38 1,0
 (142) 0,21 1,0
 Longueur en mètres

↓
 Au en g/l
 - Laboratoire Opémiska

→
 Au en ppb
 - Laboratoire Métriciab

PROJET ACHATES	
HANSEN SHOWING	
TENEURS DES ECHANTILLONS EN RAINURE	
Dessiné par: FL	ECHELLE: 1 : 200
Revisé par: R. OUELLET	
Date: OCTOBRE 1987	



Ministère de l'Énergie et des Ressources
Service de l'Information
Date: 8.07.98
Niveau: 17339

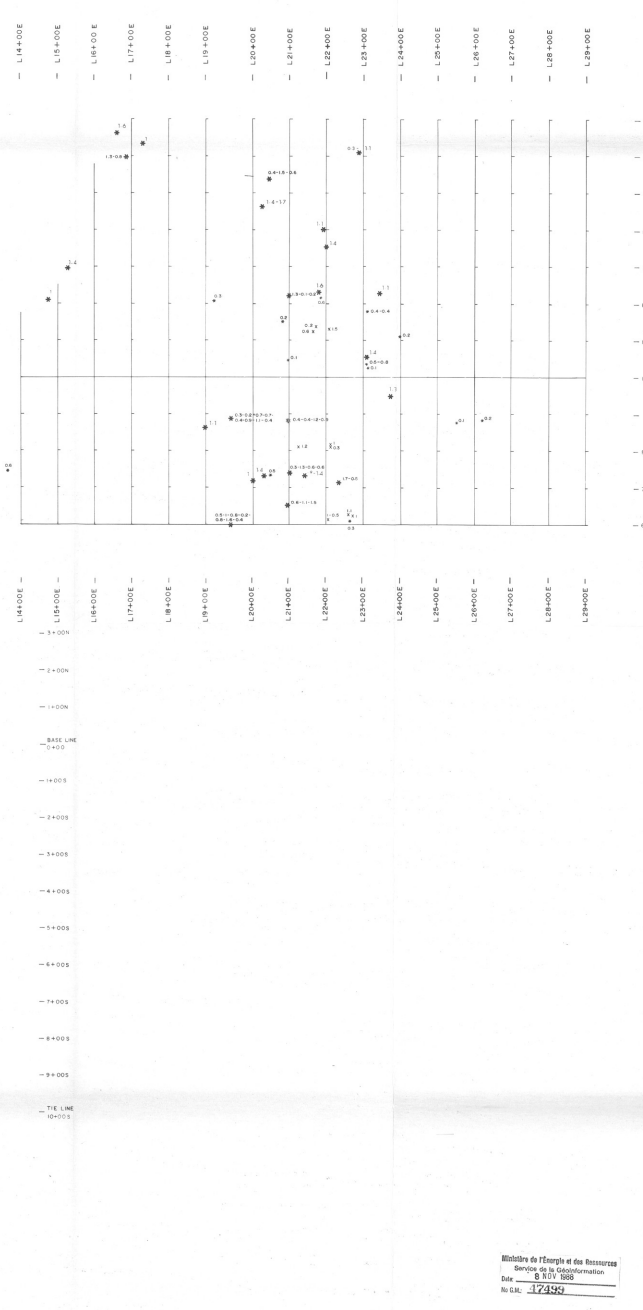
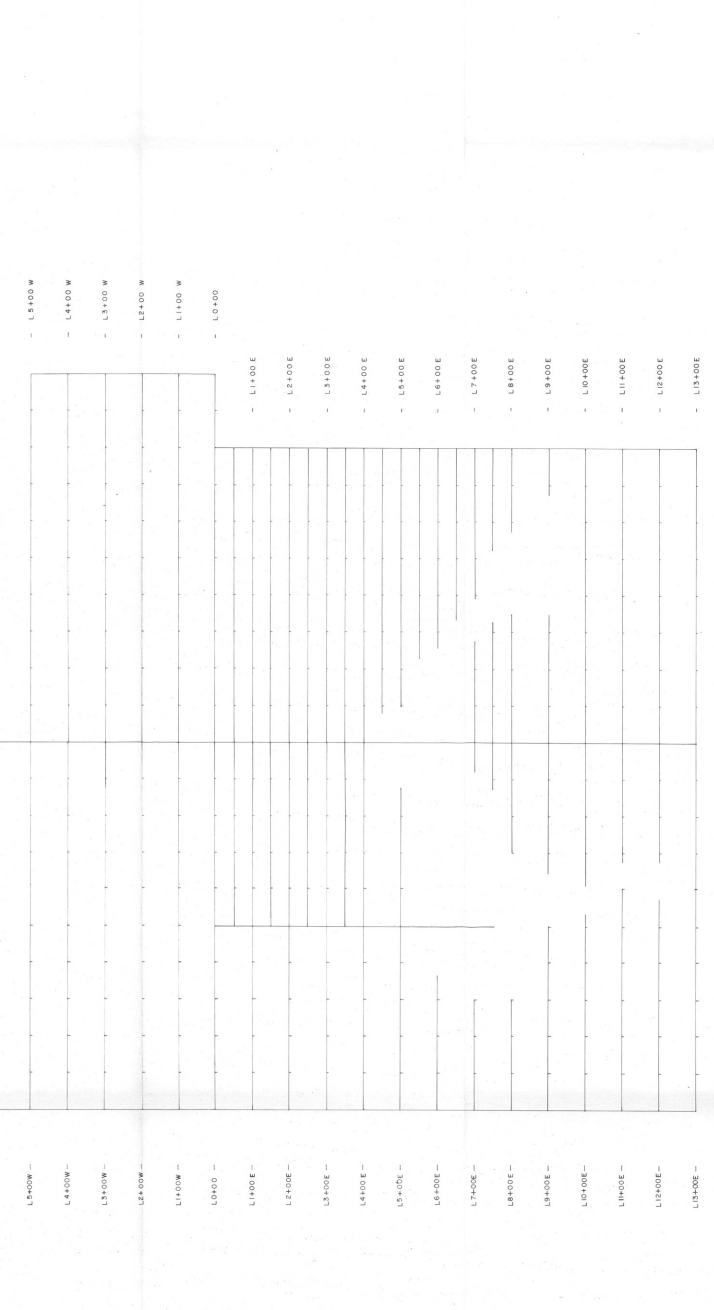
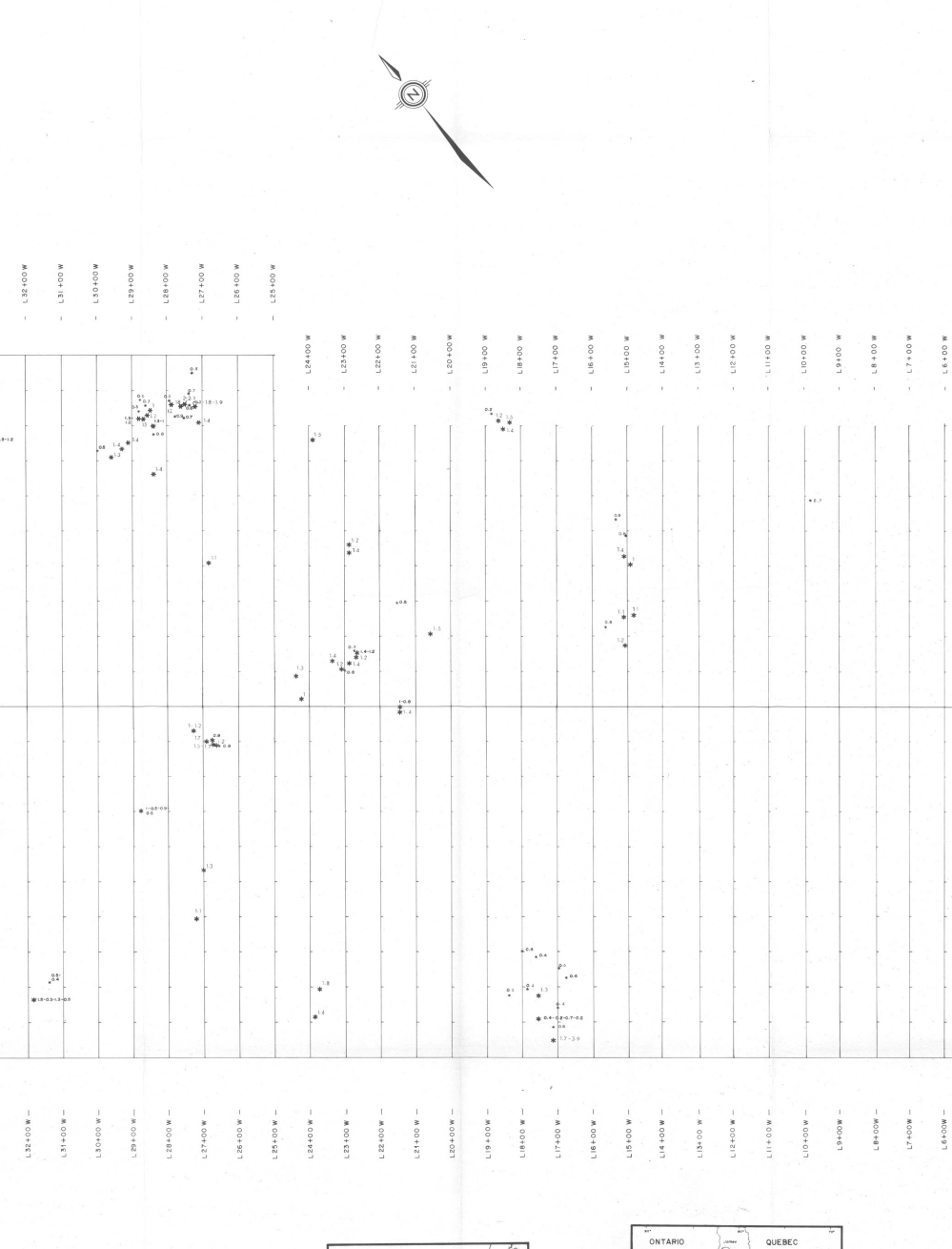
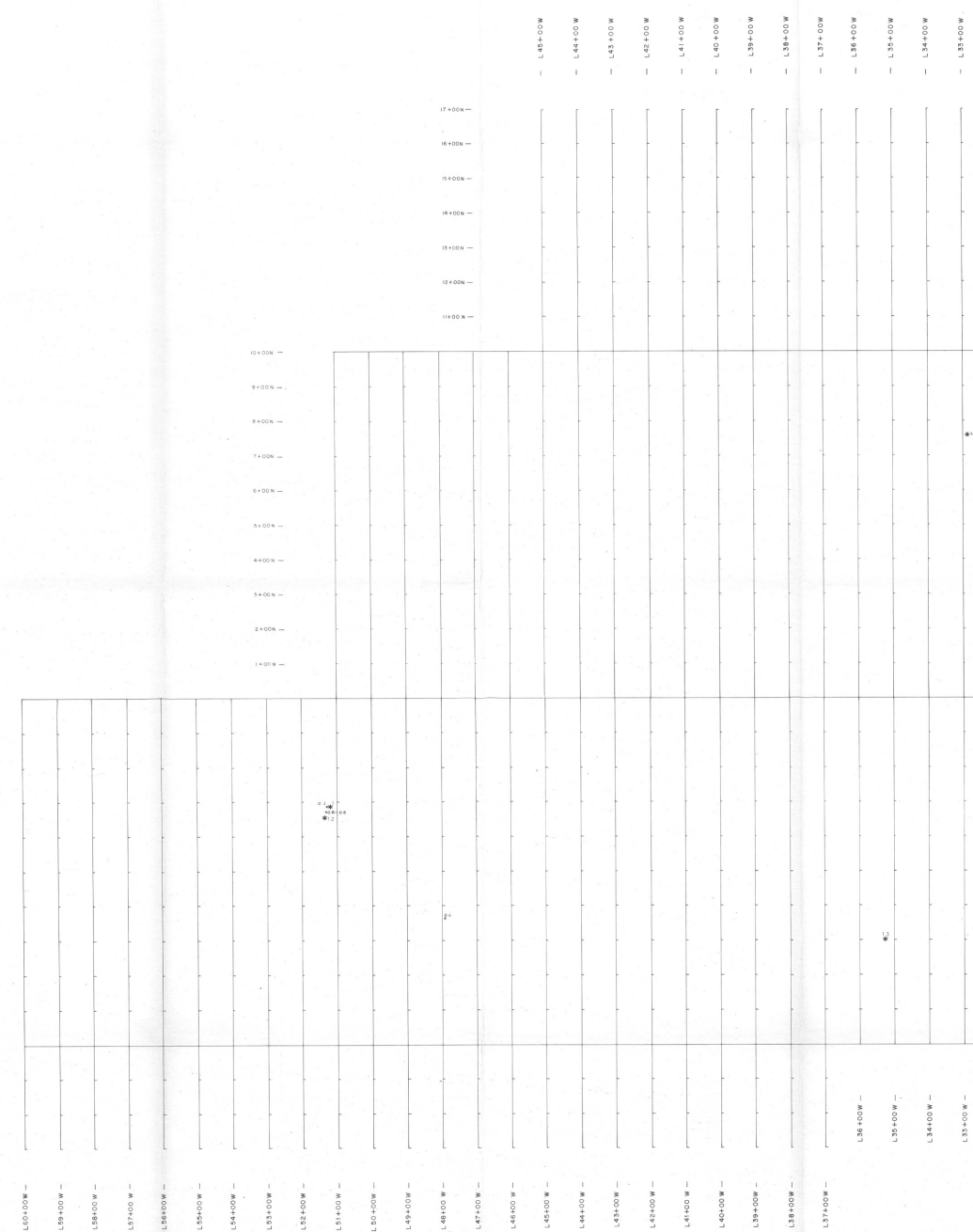


MINNOVA Inc.
GROUPE ACHATES
 SURFACE SAMPLES
 Location of samples

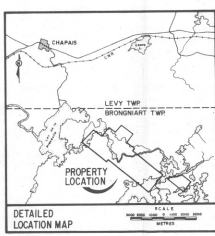
Project No. C-971 By: G. Sirois, P. Sobe
 Scale: 1:5000 Compiled by: GEOA, LITE
 Drawing No. Date: April 1998

MPH MPH Consulting Limited

BASE LINE 0+00



L60100W
L59100W
L58100W
L57100W
L56100W
L55100W
L54100W
L53100W
L52100W
L51100W
L50100W
L49100W
L48100W
L47100W
L46100W
L45100W
L44100W
L43100W
L42100W
L41100W
L40100W
L39100W
L38100W
L37100W
L36100W
L35100W
L34100W
L33100W
L32100W
L31100W
L30100W
L29100W
L28100W
L27100W
L26100W
L25100W
L24100W
L23100W
L22100W
L21100W
L20100W
L19100W
L18100W
L17100W
L16100W
L15100W
L14100W
L13100W
L12100W
L11100W
L10100W
L9100W
L8100W
L7100W
L6100W
L5100W
L4100W
L3100W
L2100W
L1100W
L0100
L14400E
L15400E
L16400E
L17400E
L18400E
L19400E
L20400E
L21400E
L22400E
L23400E
L24400E
L25400E
L26400E
L27400E
L28400E
L29000E



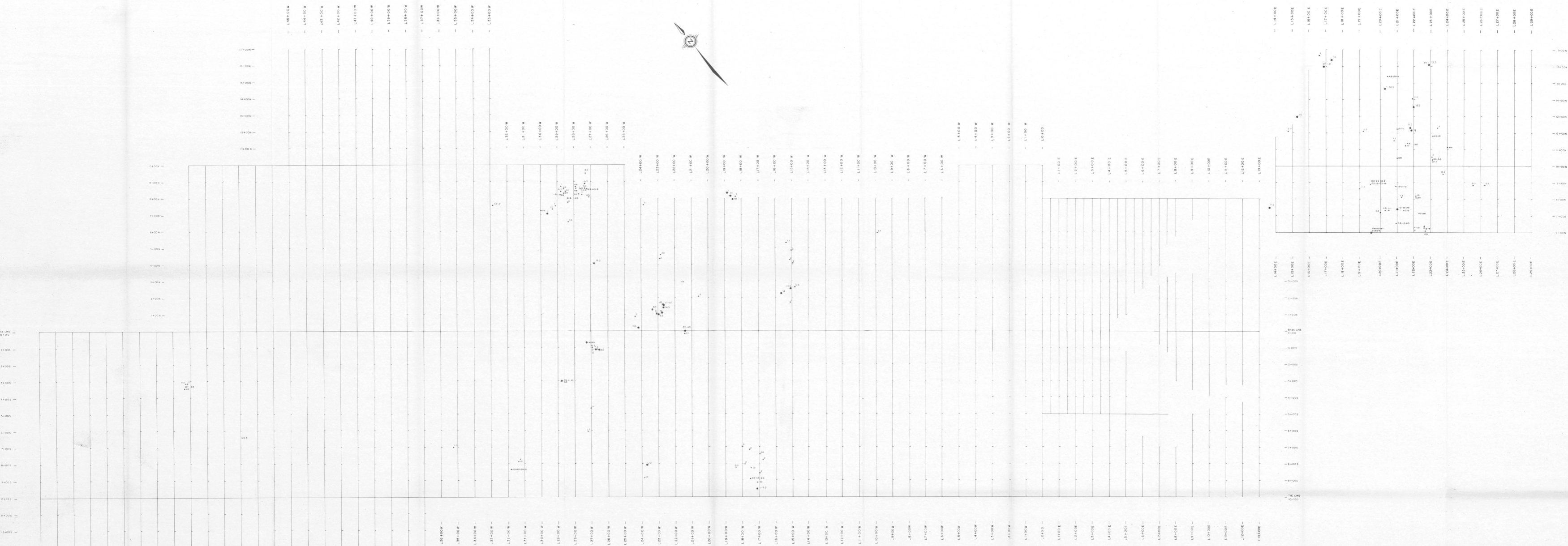
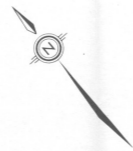
Ministère de l'Énergie et des Ressources
Division de la Géologie
Date: 6 NOV 1988
No. G.M. 17339

SCALE
0 100 200 300 400 500

MINNOVA inc.
GROUPE ACHATES
SURFACE SAMPLES
Ag

NOTE: Anomalous readings 1 ppm and over
Project No. C-971 By G. Spector, P. Sobe
Scale 1:5000 Compiled by GEOLA LITE
Drawing No. Date April 1988

MPH MPH Consulting Limited

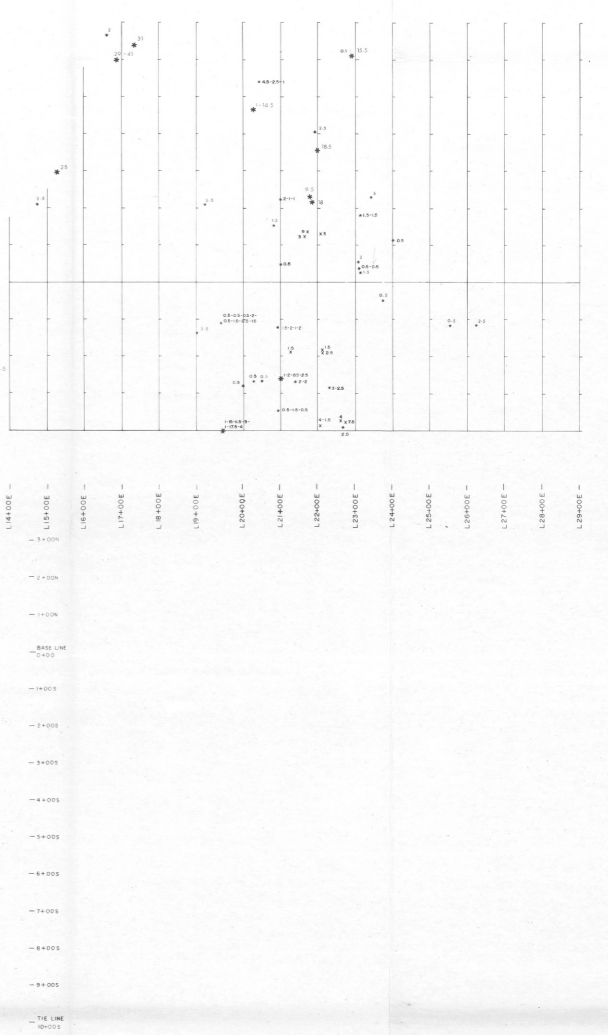
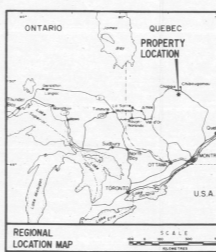
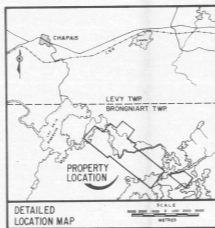


BASE LINE
17400 N
16400 N
15400 N
14400 N
13400 N
12400 N
11400 N
10400 N
9400 N
8400 N
7400 N
6400 N
5400 N
4400 N
3400 N
2400 N
1400 N
400 N

17400 E
16400 E
15400 E
14400 E
13400 E
12400 E
11400 E
10400 E
9400 E
8400 E
7400 E
6400 E
5400 E
4400 E
3400 E
2400 E
1400 E
400 E

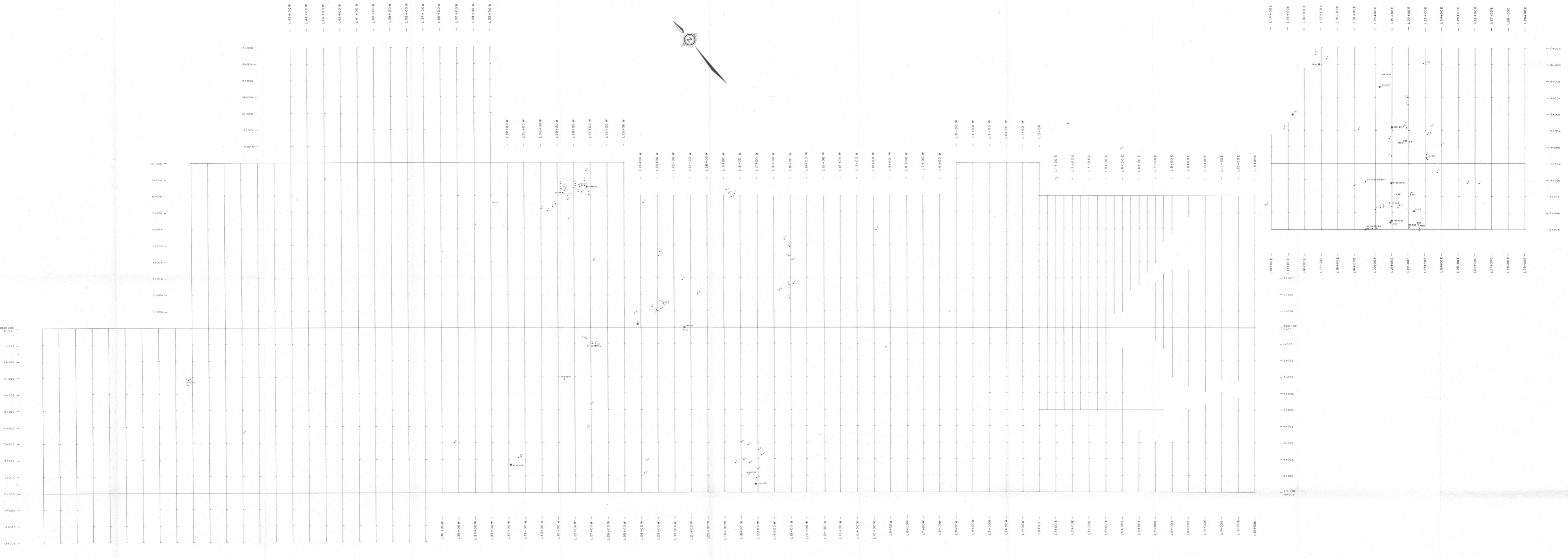
L60400W -
L59400W -
L58400W -
L57400W -
L56400W -
L55400W -
L54400W -
L53400W -
L52400W -
L51400W -
L50400W -
L49400W -
L48400W -
L47400W -
L46400W -
L45400W -
L44400W -
L43400W -
L42400W -
L41400W -
L40400W -
L39400W -
L38400W -
L37400W -
L36400W -
L35400W -
L34400W -
L33400W -
L32400W -
L31400W -
L30400W -
L29400W -
L28400W -
L27400W -
L26400W -
L25400W -
L24400W -
L23400W -
L22400W -
L21400W -
L20400W -
L19400W -
L18400W -
L17400W -
L16400W -
L15400W -
L14400W -
L13400W -
L12400W -
L11400W -
L10400W -
L9400W -
L8400W -
L7400W -
L6400W -
L5400W -
L4400W -
L3400W -
L2400W -
L1400W -
L400W

L32400E -
L31400E -
L30400E -
L29400E -
L28400E -
L27400E -
L26400E -
L25400E -
L24400E -
L23400E -
L22400E -
L21400E -
L20400E -
L19400E -
L18400E -
L17400E -
L16400E -
L15400E -
L14400E -
L13400E -
L12400E -
L11400E -
L10400E -
L9400E -
L8400E -
L7400E -
L6400E -
L5400E -
L4400E -
L3400E -
L2400E -
L1400E -
L400E



Minnova Inc.
Service de la Géomatique
Date: 01/11/1998
No. 04: 17244

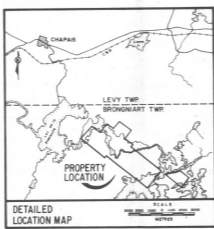
SCALE
0 100 200 300 400 500 600 700 800 900 1000
MINNOVA Inc.
GROUPE ACHATES
SURFACE SAMPLES
As
NOTE: Anomalous threshold, 0 ppm and over
Project No. C-1971 By: G. Sirois, J. Babin
Scale: 1:2000 Compiled by: GEOLA-LTE
Drawing No. Date: April 1998
MPH Consulting Limited



L45+00W
 L44+00W
 L43+00W
 L42+00W
 L41+00W
 L40+00W
 L39+00W
 L38+00W
 L37+00W
 L36+00W
 L35+00W
 L34+00W
 L33+00W
 L32+00W
 L31+00W
 L30+00W
 L29+00W
 L28+00W
 L27+00W
 L26+00W
 L25+00W
 L24+00W
 L23+00W
 L22+00W
 L21+00W
 L20+00W
 L19+00W
 L18+00W
 L17+00W
 L16+00W
 L15+00W
 L14+00W
 L13+00W
 L12+00W
 L11+00W
 L10+00W
 L9+00W
 L8+00W
 L7+00W
 L6+00W
 L5+00W
 L4+00W
 L3+00W
 L2+00W
 L1+00W
 L0+00W

L32+00W
 L31+00W
 L30+00W
 L29+00W
 L28+00W
 L27+00W
 L26+00W
 L25+00W
 L24+00W
 L23+00W
 L22+00W
 L21+00W
 L20+00W
 L19+00W
 L18+00W
 L17+00W
 L16+00W
 L15+00W
 L14+00W
 L13+00W
 L12+00W
 L11+00W
 L10+00W
 L9+00W
 L8+00W
 L7+00W
 L6+00W
 L5+00W
 L4+00W
 L3+00W
 L2+00W
 L1+00W
 L0+00W

L14+00E
 L13+00E
 L12+00E
 L11+00E
 L10+00E
 L9+00E
 L8+00E
 L7+00E
 L6+00E
 L5+00E
 L4+00E
 L3+00E
 L2+00E
 L1+00E
 L0+00E

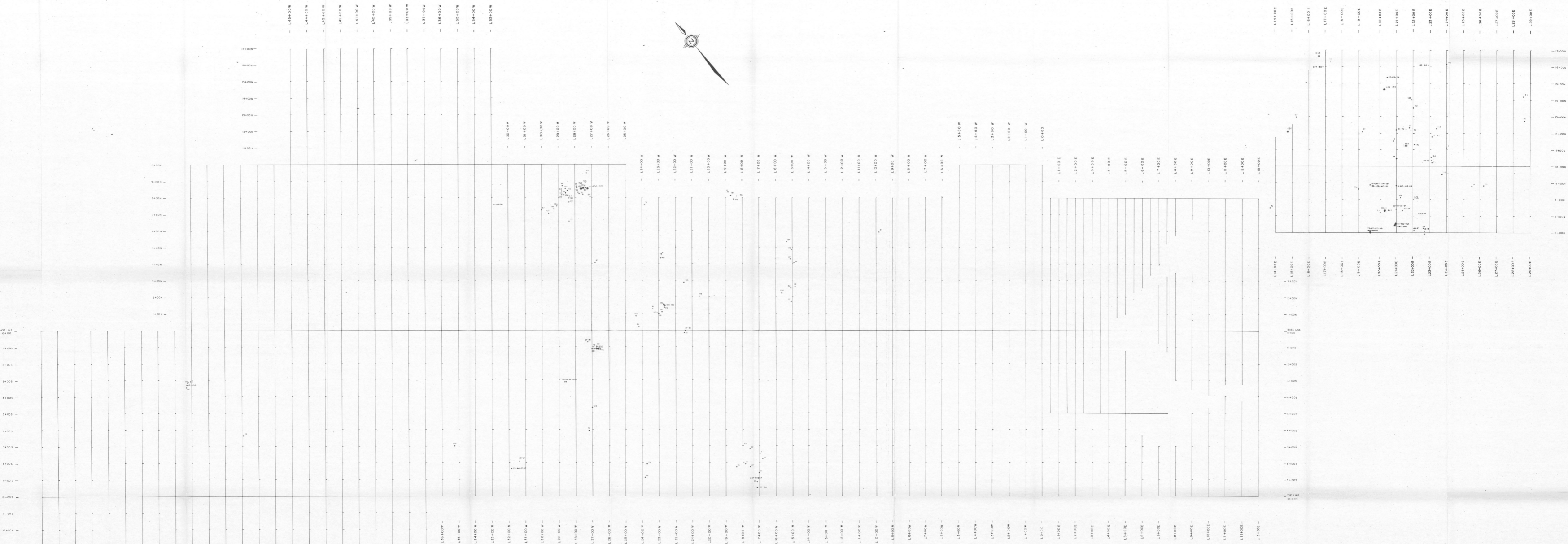


Ministère de l'Énergie et des Ressources
 Service de la Géologie
 Date: 8 NOV 1988
 No. 04: 172187

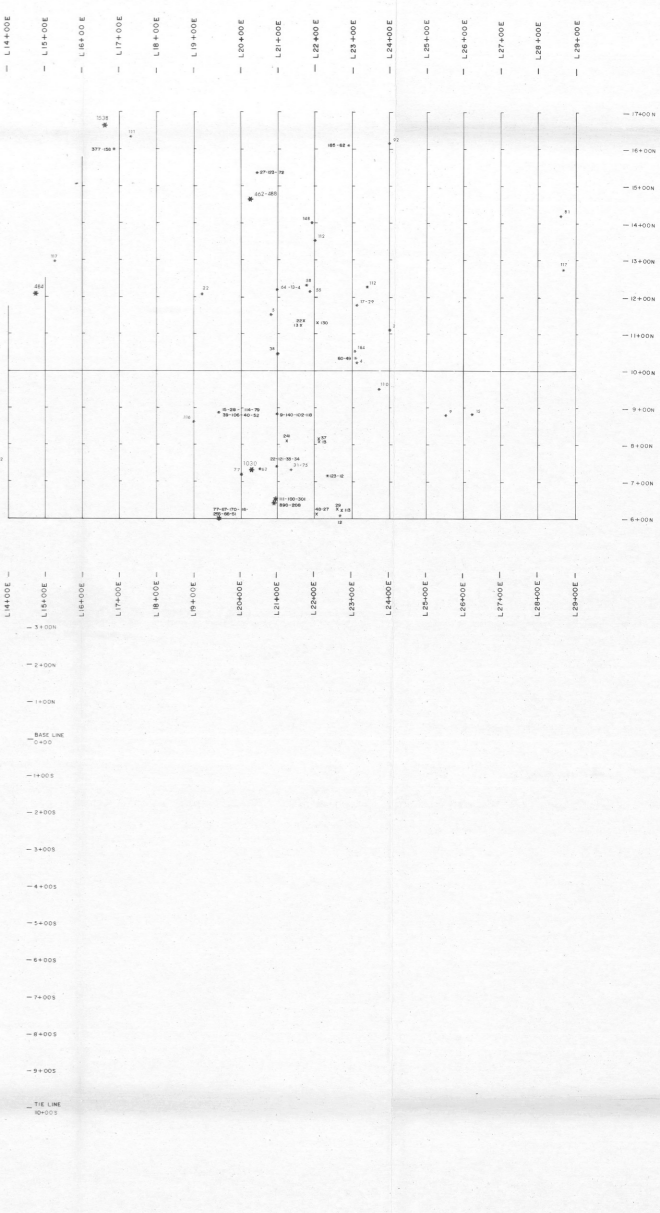
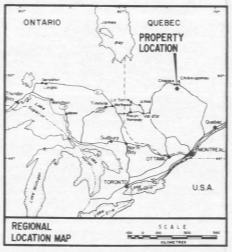
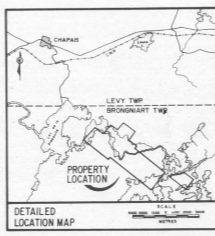
SCALE

MINNOVA inc.
 GROUPE ACHATES
 SURFACE SAMPLES
 Au
 NOTE: Aconitic Analysis, 20 p.p.b. and over
 Project No. C-971 By: G. Spector, P. Sidor
 Scale: 1:5000 Compiled by: GEOLA LEE
 Drawing No. Date: April 1988

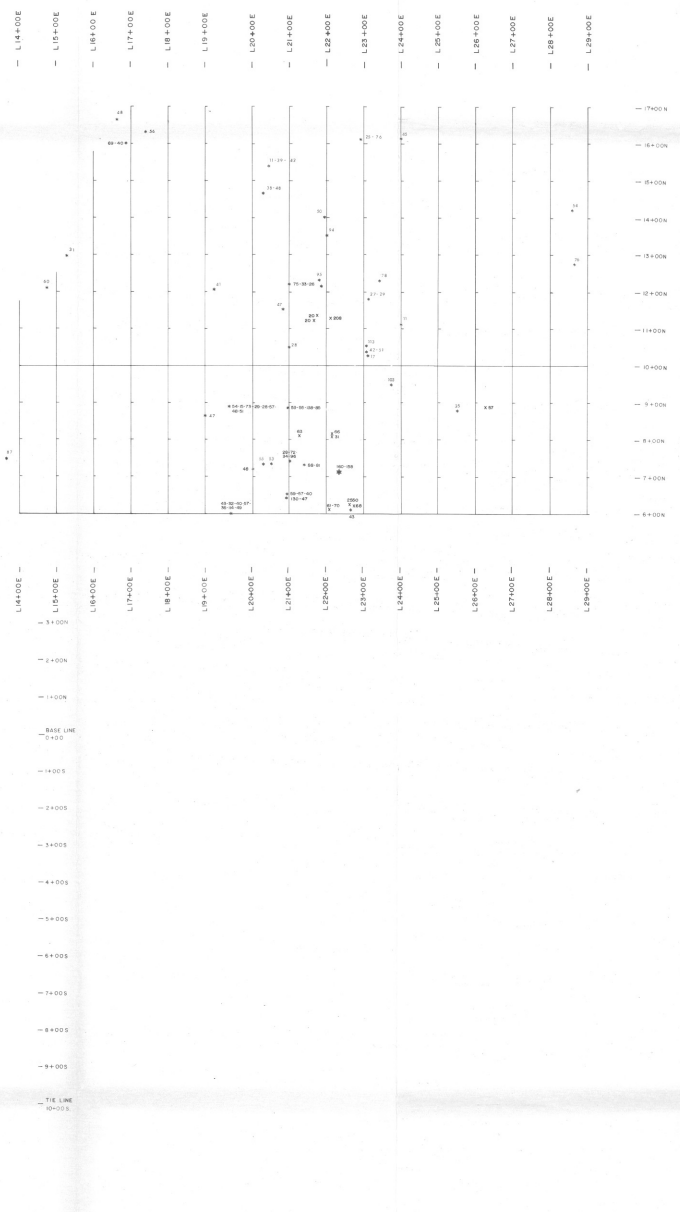
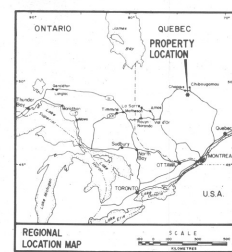
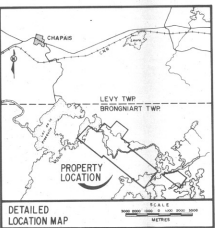
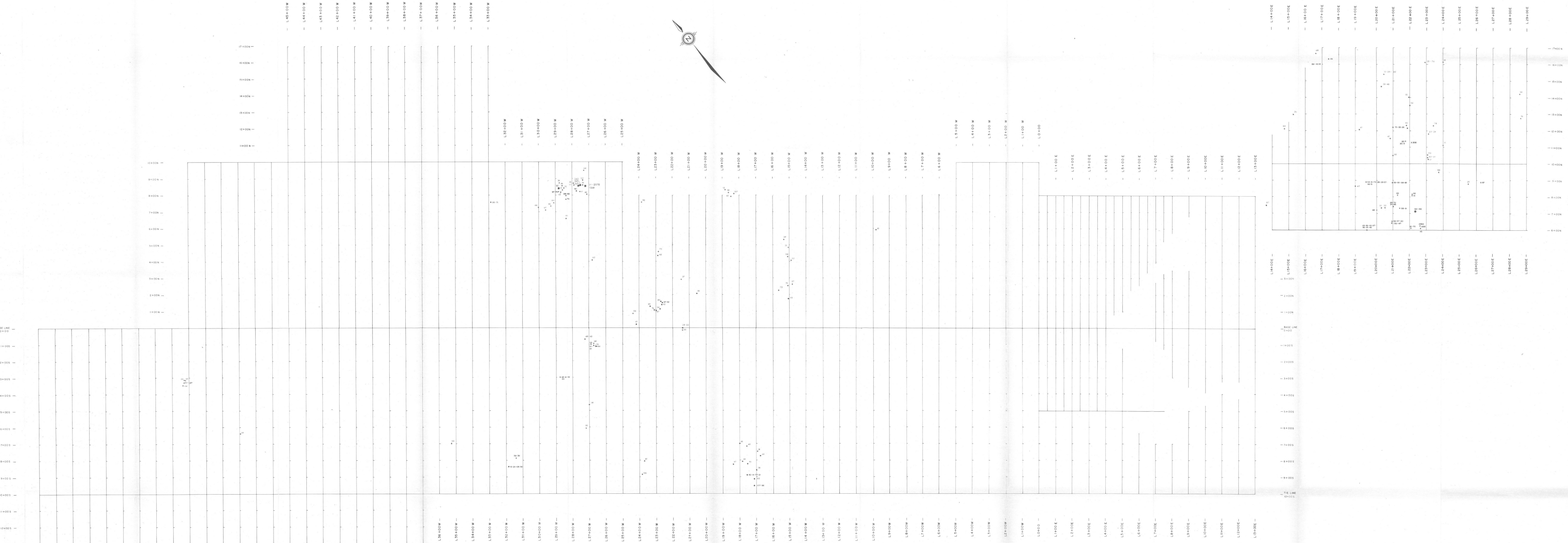
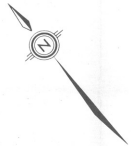
MPH Consulting Limited



L65+00E
L59+00W
L58+00W
L57+00W
L56+00W
L55+00W
L54+00W
L53+00W
L52+00W
L51+00W
L50+00W
L49+00W
L48+00W
L47+00W
L46+00W
L45+00W
L44+00W
L43+00W
L42+00W
L41+00W
L40+00W
L39+00W
L38+00W
L37+00W
L36+00W
L35+00W
L34+00W
L33+00W
L32+00W
L31+00W
L30+00W
L29+00W
L28+00W
L27+00W
L26+00W
L25+00W
L24+00W
L23+00W
L22+00W
L21+00W
L20+00W
L19+00W
L18+00W
L17+00W
L16+00W
L15+00W
L14+00W
L13+00W
L12+00W
L11+00W
L10+00W
L9+00W
L8+00W
L7+00W
L6+00W
L5+00W
L4+00W
L3+00W
L2+00W
L1+00W
L0+00W
L1+00E
L2+00E
L3+00E
L4+00E
L5+00E
L6+00E
L7+00E
L8+00E
L9+00E
L10+00E
L11+00E
L12+00E
L13+00E
L14+00E
L15+00E
L16+00E
L17+00E
L18+00E
L19+00E
L20+00E
L21+00E
L22+00E
L23+00E
L24+00E
L25+00E
L26+00E
L27+00E
L28+00E
L29+00E
L30+00E
L31+00E
L32+00E
L33+00E



Minnova Inc.
GROUPE ACHATES
SURFACE SAMPLES
Cu
NOTE: Analytical results are based on 177 p.p.m. and over.
Project No. C-971
Scale: 1:500
Drawing No. 17399
By: G. Spector, P.Eng.
Completed by: GEOLA LTEE
Date: April 1988
MPH Consulting Limited



Ministère de l'Énergie et des Ressources
Service de la Géoinformation
8 NOV 1998
No. G.L. 17335



MINNOVA Inc.
GRUPE ACHATES
SURFACE SAMPLES
Zn
 NOTE: Anomalous Results 143 ppm and over
 Project No. C-971 By: G. Spector, P. Sidor
 Scale: 1:5000 Contoured by: GSDLA, LITE
 Drawing No. Date: April 1998
MPH MPH Consulting Limited