

LEGEND

Abitibi Quaternary Stratigraphy

- 0 Years B.P. HOLOCENE**
 - 7 Holocene sediments
 - 7b - forest-peat member
 - 7a - fluvial member
- 10,000 Years B.P. PLEISTOCENE LATE WISCONSINAN**
 - 6 Cochrane Unit
 - 6c - regressive sediments
 - 6b - till
 - 6a - transgressive sediments
 - 5 Ojibway II Sediments
 - 5d - littoral and aeolian member
 - 5c - glaciolacustrine clay member
 - 5b - glaciolacustrine sand member
 - 5a - glacioluvial member
 - 4 Chibougamau/Matheson Till
- 100,000 Years B.P. EARLY WISCONSINAN AND SANGAMON**
 - 3 Missinaibi Sediments
 - 3c - Ojibway I member
 - 3b - forest-peat member
 - 3a - fluvial member
- ILLINOIAN**
 - 2 Lower Till and Sediments
- 1,000,000 Years B.P. YARMOUTH AND KANSAN**
 - 1 Older Till and Sediments

- Sediment Varieties**
- P Peat
 - C Clay, silt
 - S Sand
 - G Gravel
 - ST Sand-silt till; clay subordinate
 - CT Clay till

- Symbols**
- Quaternary/bedrock unconformity
 - ~ Interglacial unconformity
 - Quaternary unit boundary
 - Quaternary sub-unit boundary

Geochemistry
 Sand-silt till interval with
 Cu and 20 ppm Zn in non-magnetic heavy mineral fraction (S.G. greater than 3.3).

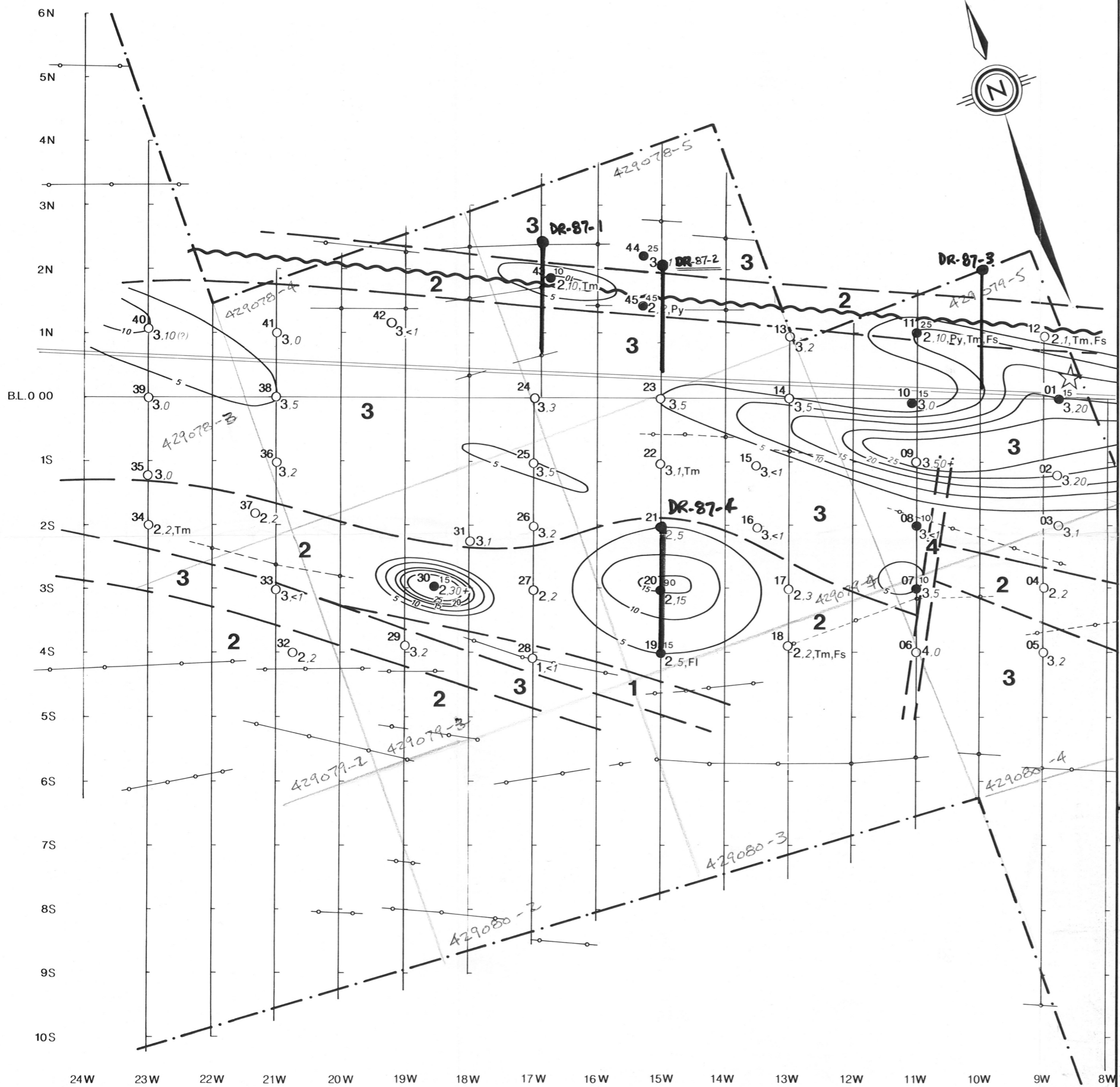
- Bedrock Lithology**
- 5 Diabase
 - 4 Gabbro
 - 3 Mudstone
 - 2 Quartz-feldspar porphyry
 - 1 Dacite

Scale
 HOR. 1:2,000 VERT. 1:200

Ministère de l'Énergie et des Ressources
 Service de l'Information
 Date: 4 MAI 1988
 No G.M.: 46134

FAIRLADY ENERGY INC.
DROUET PROPERTY
 Drouet Township, Quebec

Figure 10 - Sections



LEGEND

Bedrock Lithology

Proterozoic

4 Diabase

Archean

3 Gabbro

2 Quartz-feldspar porphyry

1 Mudstone

Hydrothermal Alteration

—10— Percent Fe/Mg carbonate: contours at 5, 10, 15, 20, and 25 percent

Fs Fuchsite

Fl Flourite

Tm Tourmaline

Py Pyrite

Symbols

12₀ 2.1 Tm Reverse circulation drill hole No. 12 with bedrock intersection of Unit 2; percent Fe/Mg carbonate; tourmaline visible

15 Greater than or equal to 10 ppb Au; 15 ppb Au

— — Lithologic contact

~ ~ Lac Bernard Fault - assumed

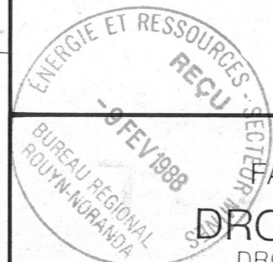
☆ Gobeil Showing

○ EM VLF conductor axis

Ministère de l'Énergie et des Ressources
Service de la Géoinformation

Date: 4 MAI 1988

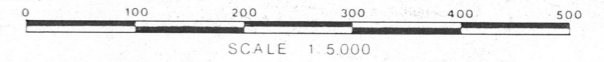
No G.M.: 46134

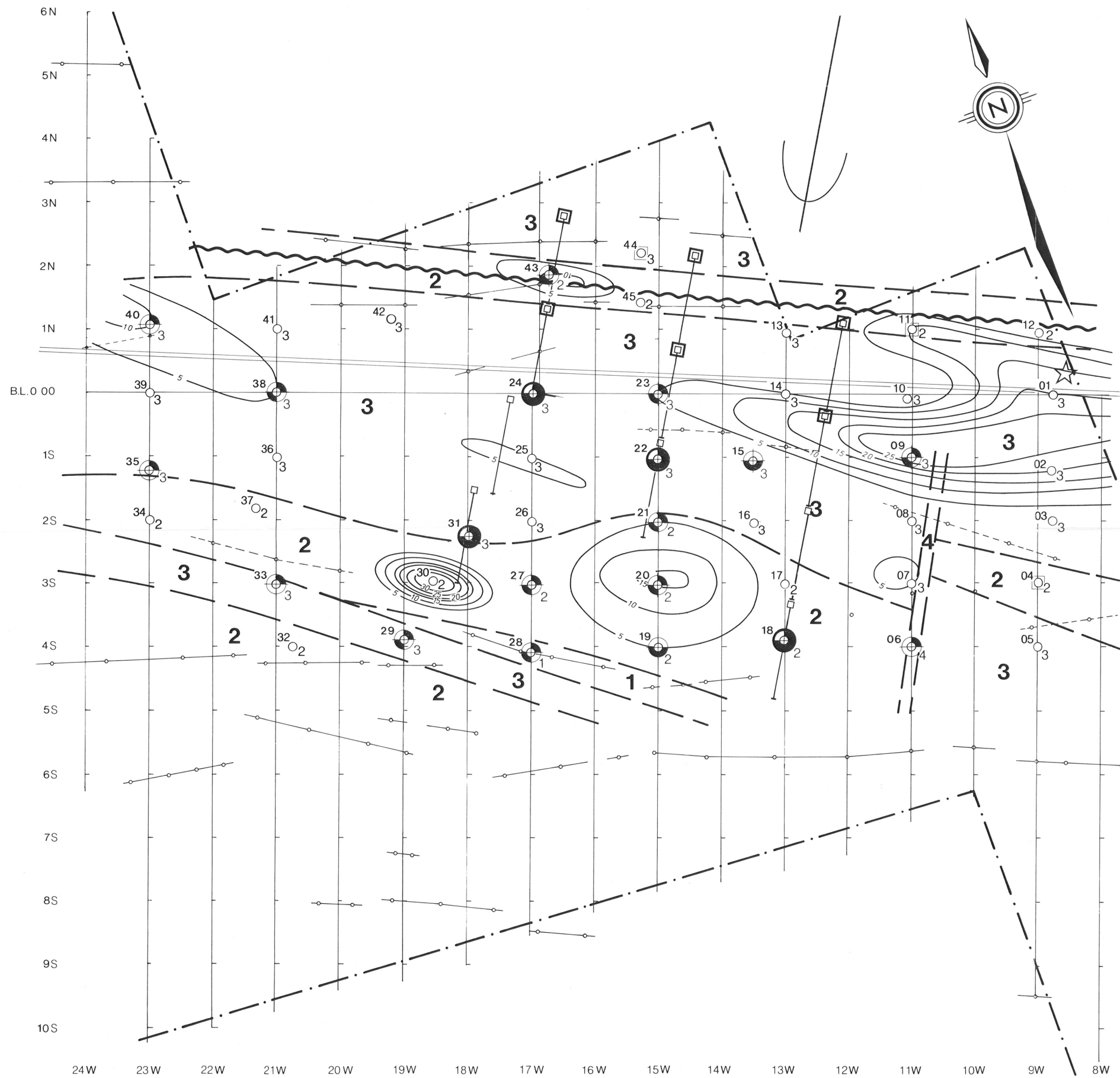


FAIRLADY ENERGY INC.
DROUET PROPERTY
DROUET TOWNSHIP, QUEBEC

Plan 1
BEDROCK GEOLOGY GEOCHEMISTRY
AND CARBONATE ALTERATION

BY OVERBURDEN DRILLING MANAGEMENT LIMITED NOVEMBER 1987





- LEGEND**
- Bedrock Lithology**
- Proterozoic
- 4 Diabase
- Archean
- 3 Gabbro
 - 2 Quartz-feldspar porphyry
 - 1 Mudstone

- Heavy Mineral Gold Anomalies**
- Greater than 1000 ppb gold
 - Ten or more visible gold grains
 - Stratigraphic continuity
 - Pathfinder elements
 - Potentially significant gold anomaly

- Symbols**
- 12₀₂ Reverse circulation drill hole No. 12 with bedrock intersection of Unit 2
 - No overburden sample collected
 - Direction of Wisconsin ice advance
 - Proposed diamond drill hole: priority hole
 - Lithologic contact
 - Lac Bernard Fault - assumed
 - Gobeil Showing
 - EM VLF conductor axis
 - Percent Fe/Mg carbonate alteration; contour interval 5 percent

GM 46134

FAIRLADY ENERGY INC.
DROUET PROPERTY
 DROUET TOWNSHIP, QUEBEC

Plan 2
**HEAVY MINERAL GOLD ANOMALIES
 AND PROPOSED FOLLOW-UP**

BY OVERBURDEN DRILLING MANAGEMENT LIMITED NOVEMBER 1987

