

LEGEND

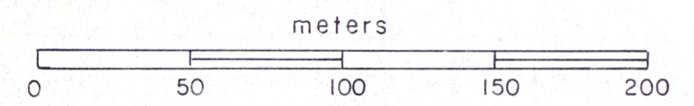
ROCK UNITS

- 3G Gabbro
- V7 Basalt
- V2 Rhyolite

SYMBOLS

- Claim post and claim line
- Swamp
- Outcrop
- Geological boundary
- Schistosity, strike and dip - inclined, vertical
- Diamond drill hole

Ministère de l'Énergie et des Ressources
 Service de la Géoinformation
 Date: **23 MAR 1988**
 No G.M.: **45944**

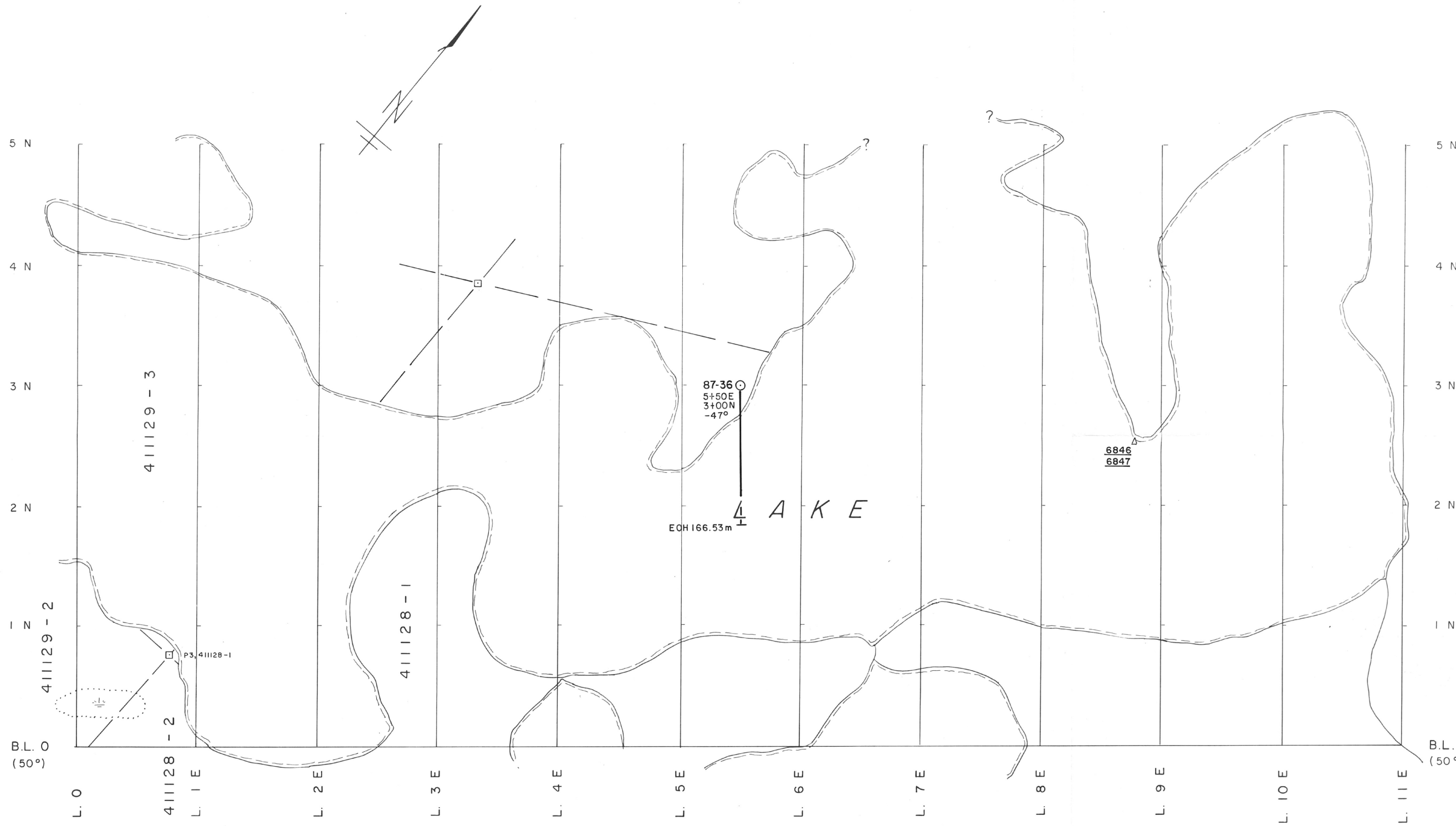


PLACER DOME INC.

GEOLOGY & LOCATION OF DRILL HOLE GRID 3

OTHER LANDS EASTMAIN, QUEBEC

DRAWN C.B.	SCALE 1:2500	NTS 33-A-8
TRACED J.G.W.	DATE Feb. 1976	V.116 (Proj. 332)
	Revised Nov. 1987	Dwg. No 116-307



- LEGEND**
- ——— Claim post and claim line
 - ⋯ Swamp
 - △ Boulder - weakly mineralized
 - 6846** Sample number and site
 - ——— Diamond drill hole

ASSAY RESULTS			
SAMPLE No.	Au ppb	Ag ppm	Cu ppm
6846	< 5	< 0.1	74
6847	< 5	< 0.1	60

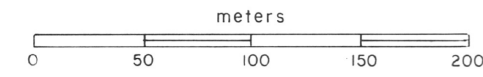
NOTE: No outcrop found on this grid

Ministère de l'Énergie et des Ressources
 Service de la Géoinformation
 Date: 23 MAR 1988
 No G.M.: 45944

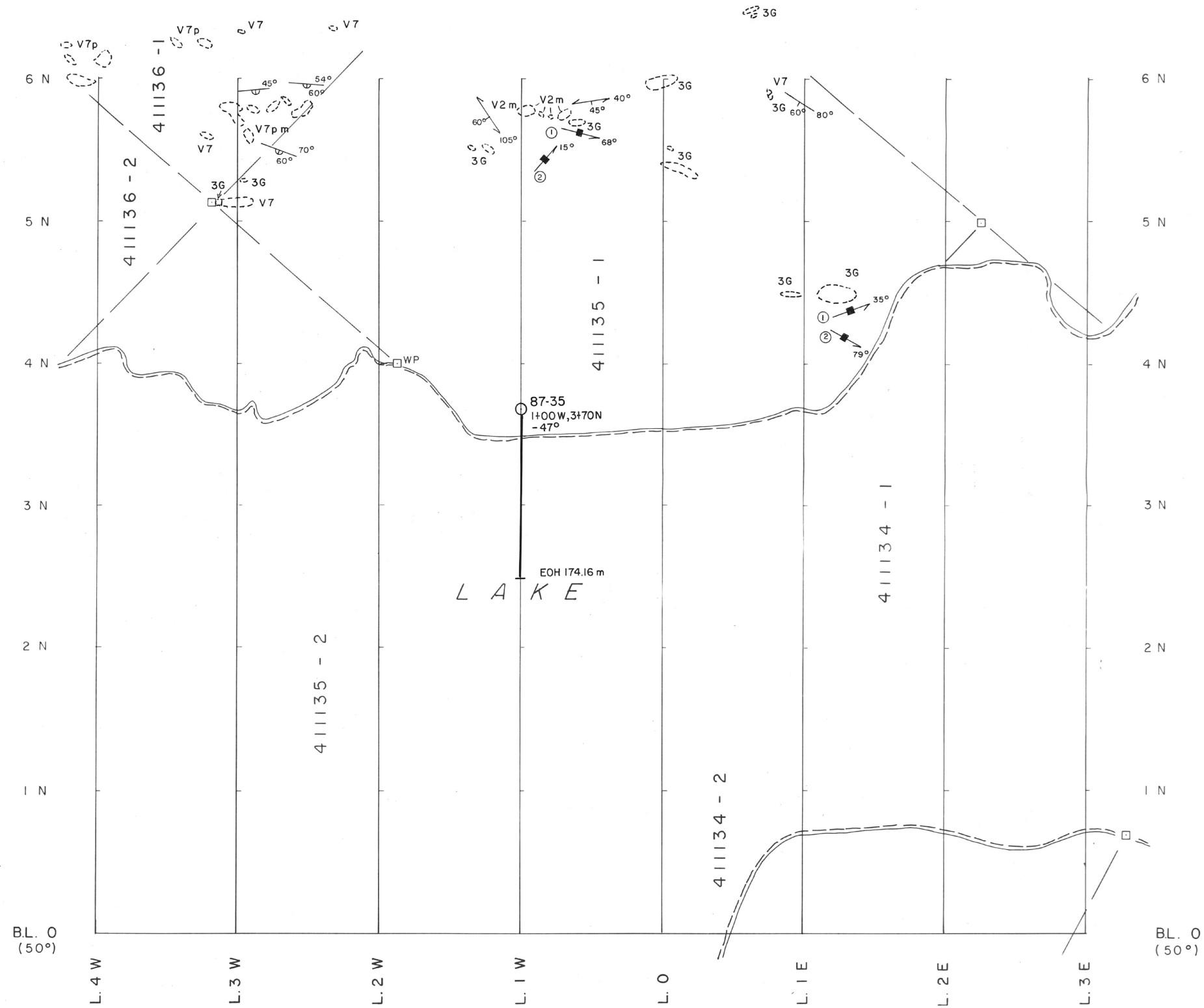
PLACER DOME INC.

GEOLOGY &
 LOCATION OF DRILL HOLE
 GRID 1

OTHER LANDS
 EASTMAIN, QUEBEC



DRAWN C.B.	SCALE 1:2500	NTS 33-A-8
TRACED J.G.W.	DATE Feb. 1986	V116 (Proj. 332)
	Revised Nov. 1987	Dwg. No. 116-305



LEGEND

ROCK UNITS

- 3G Gabbro
- V7 Basalt
- V2 Rhyolite

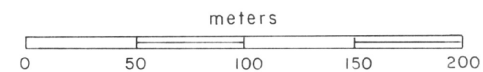
DESCRIPTIVE TERMS

- m massive
- p pillowed

SYMBOLS

- Claim post and claim line
- Outcrop
- Geological boundary
- Bedding - strike and dip
- Schistosity - strike and dip
- Pillow top - strike and dip
- Joint - sub-vertical
- ① 1st phase, ② 2nd phase
- Diamond drill hole

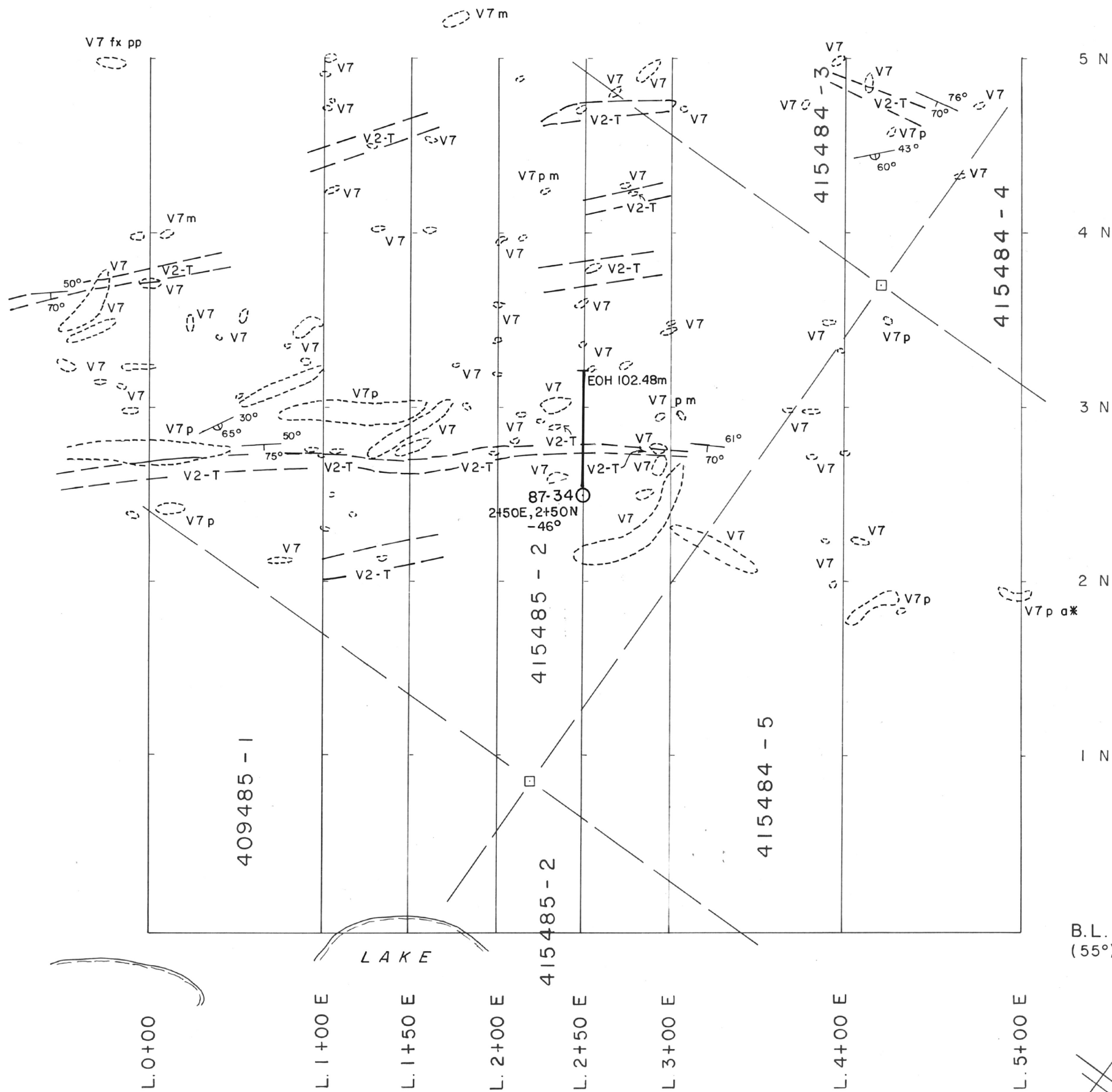
Ministère de l'Énergie et des Ressources
 Service de la Géoinformation
 Date: 23 MAR 1988
 No G.M.: 45944



PLACER DOME INC.

**GEOLOGY &
 LOCATION OF DRILL HOLE
 GRID 5
 OTHER LANDS
 EASTMAIN, QUEBEC**

DRAWN C.B.	SCALE 1:2500	NTS 33-A-8
TRACED J.G.W.	DATE Feb. 1986	VII6 (Proj. 332)
	Revised Nov. 1987	Dwg. No. 116-309



LEGEND

ROCK UNITS

- V7 Basalt
- V2-T Rhyolitic tuffs

DESCRIPTIVE TERMS

- a* amygdaloidal
- fx feldspar
- m massive
- p pillowed
- pp porphyritic

SYMBOLS

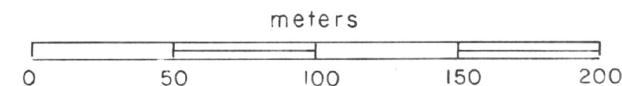
- Claim post and claim line
- Outcrop
- Geological boundary
- 50°
75° Bedding - strike and dip
- 30°
65° Pillow top - strike and dip
- Diamond drill hole

Ministère de l'Énergie et des Ressources

Service de la Géoinformation

Date: **23 MAR 1988**

No G.M.: **45944**



PLACER DOME INC.

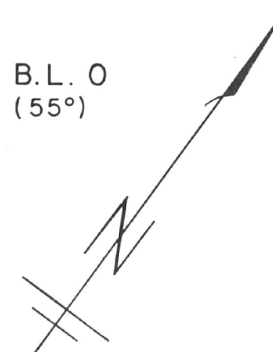
GEOLOGY &
LOCATION OF DRILL HOLE

GRID 7

OTHER LANDS
EASTMAIN, QUEBEC

DRAWN	C.B.	SCALE	1 : 2500	NTS	33-A-8
TRACED	J.G.W.	DATE	Feb. 1986	VII6	(Proj. 332)
		Revised	Nov. 1987	Dwg.No.	116-311

B.L. 0
(55°)



PLACER DOME INC.
 EASTMAIN, QUEBEC
 RECONNAISSANCE GEOLOGY
 WESTERN BLOCK, OTHER LANDS
 WITH GRID LOCATIONS

DRAWN A.F.	SCALE 1:15,000	NTS 33-A & 23-D
TRACED J.G.W.	DATE Nov 1983	V II 6 (Proj. 332)
APPROVED		Dwg. No. II 6 - 164

ROCK CHIP SAMPLES ASSAY RESULTS				
Sample No.	Au ppb	Ag ppm	As ppm	Cu ppm
1808	<5	0.1	<2	77
1809	10	0.5	2	45
1810	30	0.5	52	45
1811	160	3.6	2	234
1812	<5	0.5	<2	59
1813	<5	0.9	<2	300
1815	<5	0.2	6	8
1816	<5	0.3	41	2
6846	<5	<0.1	-	74
6847	<5	<0.1	-	60
6891	<5	0.2	-	128
6892	<5	0.3	-	68
7040	<5	0.1	-	252
7041	5	0.4	-	560
7042	<5	0.1	-	124

Revised Feb 1986
 Nov 1987

Ministère de l'Énergie et des Ressources
 Service de l'Information
 Date: 23 MAR 1988
 No GM: 45944

LEGEND

ROCK UNITS

- I Granite (undifferentiated)
- IG granite
- IP pegmatite
- IR felsite / rhyolite
- ID granodiorite
- 3 Gabbro (undifferentiated)
- 3G gabbro
- 2D diorite
- S Metasediments
- S2 arenaceous
- S4 argillaceous
- S1 conglomerate
- S6 iron formation
- F Iron formation
- F2 sulphide
- F4 carbonate
- F3 oxide
- F1 silicate

Cycles 1 & 2 Volcanics (1M, 2M & 1F)

- V2 Felsic volcanics
 - m massive
 - fa sheared / foliated
 - if tuffaceous
 - pi pillowed
 - p porphyritic / porphyroblastic
- V10 pyroclastic
- V2fb flow-banded rhyolite
- V7 Mafic volcanics
 - m massive
 - fa sheared / foliated
 - if tuffaceous
 - pi pillowed
 - p porphyritic / porphyroblastic
 - tr pyroclastic (>8mm)

SYMBOLS

- Lake
- Property boundary - Other Lands
- Geological boundary, approximate
- Geological boundary, inferred
- Fault interpreted from aeromagnetics - apparent displacement
- Outcrop ; boulders
- Pillow top - strike & dip ; overturned pillow top - strike & dip
- Schistosity - strike & dip
- Grid alteration, intensity (veins/m)
- Diamond drill hole
- Rock chip sample - number & site
- IB11 Airborne EM anomaly
- X 1070 B Airborne EM anomaly
- ANOM. B Significant AEM anomaly

ABBREVIATIONS (alphabetical)

- an andalusite
- cpy chalcopyrite
- ga garnet
- ky kyanite
- po pyrrhotite
- py pyrite
- st staurolite

Mapped by D. Davidson and A. Fleming, July 1983
 Up-dated by C. Bernier and H. Thiboutot, August 1985

* does not occur on this map sheet

