

RANGE VI

RANGE VI

TIE LINE 53+00 S

TIE LINE 53+00 S

- LEGEND**
- MEASUREMENT STATIONS ALONG PICKET LINES
  - FRASER REDUCTION METHOD USED
  - CONTOUR INTERVAL : + 20
  - ELECTRICAL CONDUCTOR
  - INSTRUMENT USED : GEONICS EM - 16
  - CLAIM POST
  - ± SWAMP
  - X OUTCROP



CLAIM MAP  
SCALE - 1 : 50 000

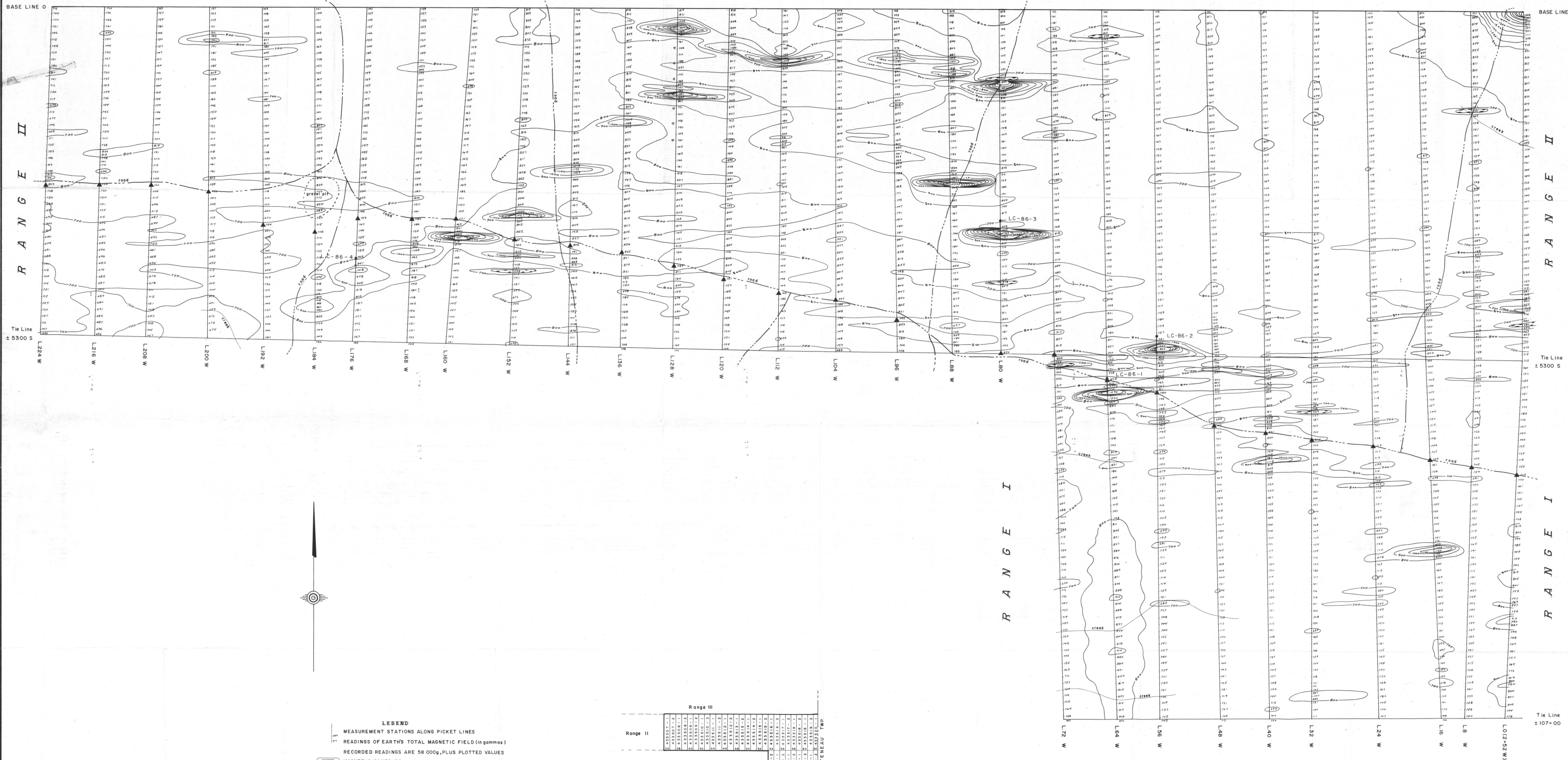
4328845.2	4328845.1	4328845.0	4328844.9	4328844.8	4328844.7	4328844.6	4328844.5	4328844.4	4328844.3	4328844.2	4328844.1	4328844.0	4328843.9	4328843.8	4328843.7	4328843.6	4328843.5	4328843.4	4328843.3	4328843.2	4328843.1	4328843.0	4328842.9	4328842.8	4328842.7	4328842.6	4328842.5	4328842.4	4328842.3	4328842.2	4328842.1	4328842.0	4328841.9	4328841.8	4328841.7	4328841.6	4328841.5	4328841.4	4328841.3	4328841.2	4328841.1	4328841.0	4328840.9	4328840.8	4328840.7	4328840.6	4328840.5	4328840.4	4328840.3	4328840.2	4328840.1	4328840.0	4328839.9	4328839.8	4328839.7	4328839.6	4328839.5	4328839.4	4328839.3	4328839.2	4328839.1	4328839.0	4328838.9	4328838.8	4328838.7	4328838.6	4328838.5	4328838.4	4328838.3	4328838.2	4328838.1	4328838.0	4328837.9	4328837.8	4328837.7	4328837.6	4328837.5	4328837.4	4328837.3	4328837.2	4328837.1	4328837.0	4328836.9	4328836.8	4328836.7	4328836.6	4328836.5	4328836.4	4328836.3	4328836.2	4328836.1	4328836.0	4328835.9	4328835.8	4328835.7	4328835.6	4328835.5	4328835.4	4328835.3	4328835.2	4328835.1	4328835.0	4328834.9	4328834.8	4328834.7	4328834.6	4328834.5	4328834.4	4328834.3	4328834.2	4328834.1	4328834.0	4328833.9	4328833.8	4328833.7	4328833.6	4328833.5	4328833.4	4328833.3	4328833.2	4328833.1	4328833.0	4328832.9	4328832.8	4328832.7	4328832.6	4328832.5	4328832.4	4328832.3	4328832.2	4328832.1	4328832.0	4328831.9	4328831.8	4328831.7	4328831.6	4328831.5	4328831.4	4328831.3	4328831.2	4328831.1	4328831.0	4328830.9	4328830.8	4328830.7	4328830.6	4328830.5	4328830.4	4328830.3	4328830.2	4328830.1	4328830.0	4328829.9	4328829.8	4328829.7	4328829.6	4328829.5	4328829.4	4328829.3	4328829.2	4328829.1	4328829.0	4328828.9	4328828.8	4328828.7	4328828.6	4328828.5	4328828.4	4328828.3	4328828.2	4328828.1	4328828.0	4328827.9	4328827.8	4328827.7	4328827.6	4328827.5	4328827.4	4328827.3	4328827.2	4328827.1	4328827.0	4328826.9	4328826.8	4328826.7	4328826.6	4328826.5	4328826.4	4328826.3	4328826.2	4328826.1	4328826.0	4328825.9	4328825.8	4328825.7	4328825.6	4328825.5	4328825.4	4328825.3	4328825.2	4328825.1	4328825.0	4328824.9	4328824.8	4328824.7	4328824.6	4328824.5	4328824.4	4328824.3	4328824.2	4328824.1	4328824.0	4328823.9	4328823.8	4328823.7	4328823.6	4328823.5	4328823.4	4328823.3	4328823.2	4328823.1	4328823.0	4328822.9	4328822.8	4328822.7	4328822.6	4328822.5	4328822.4	4328822.3	4328822.2	4328822.1	4328822.0	4328821.9	4328821.8	4328821.7	4328821.6	4328821.5	4328821.4	4328821.3	4328821.2	4328821.1	4328821.0	4328820.9	4328820.8	4328820.7	4328820.6	4328820.5	4328820.4	4328820.3	4328820.2	4328820.1	4328820.0	4328819.9	4328819.8	4328819.7	4328819.6	4328819.5	4328819.4	4328819.3	4328819.2	4328819.1	4328819.0	4328818.9	4328818.8	4328818.7	4328818.6	4328818.5	4328818.4	4328818.3	4328818.2	4328818.1	4328818.0	4328817.9	4328817.8	4328817.7	4328817.6	4328817.5	4328817.4	4328817.3	4328817.2	4328817.1	4328817.0	4328816.9	4328816.8	4328816.7	4328816.6	4328816.5	4328816.4	4328816.3	4328816.2	4328816.1	4328816.0	4328815.9	4328815.8	4328815.7	4328815.6	4328815.5	4328815.4	4328815.3	4328815.2	4328815.1	4328815.0	4328814.9	4328814.8	4328814.7	4328814.6	4328814.5	4328814.4	4328814.3	4328814.2	4328814.1	4328814.0	4328813.9	4328813.8	4328813.7	4328813.6	4328813.5	4328813.4	4328813.3	4328813.2	4328813.1	4328813.0	4328812.9	4328812.8	4328812.7	4328812.6	4328812.5	4328812.4	4328812.3	4328812.2	4328812.1	4328812.0	4328811.9	4328811.8	4328811.7	4328811.6	4328811.5	4328811.4	4328811.3	4328811.2	4328811.1	4328811.0	4328810.9	4328810.8	4328810.7	4328810.6	4328810.5	4328810.4	4328810.3	4328810.2	4328810.1	4328810.0	4328809.9	4328809.8	4328809.7	4328809.6	4328809.5	4328809.4	4328809.3	4328809.2	4328809.1	4328809.0	4328808.9	4328808.8	4328808.7	4328808.6	4328808.5	4328808.4	4328808.3	4328808.2	4328808.1	4328808.0	4328807.9	4328807.8	4328807.7	4328807.6	4328807.5	4328807.4	4328807.3	4328807.2	4328807.1	4328807.0	4328806.9	4328806.8	4328806.7	4328806.6	4328806.5	4328806.4	4328806.3	4328806.2	4328806.1	4328806.0	4328805.9	4328805.8	4328805.7	4328805.6	4328805.5	4328805.4	4328805.3	4328805.2	4328805.1	4328805.0	4328804.9	4328804.8	4328804.7	4328804.6	4328804.5	4328804.4	4328804.3	4328804.2	4328804.1	4328804.0	4328803.9	4328803.8	4328803.7	4328803.6	4328803.5	4328803.4	4328803.3	4328803.2	4328803.1	4328803.0	4328802.9	4328802.8	4328802.7	4328802.6	4328802.5	4328802.4	4328802.3	4328802.2	4328802.1	4328802.0	4328801.9	4328801.8	4328801.7	4328801.6	4328801.5	4328801.4	4328801.3	4328801.2	4328801.1	4328801.0	4328800.9	4328800.8	4328800.7	4328800.6	4328800.5	4328800.4	4328800.3	4328800.2	4328800.1	4328800.0
-----------	-----------	-----------	-----------	-----------	-----------	-----------	-----------	-----------	-----------	-----------	-----------	-----------	-----------	-----------	-----------	-----------	-----------	-----------	-----------	-----------	-----------	-----------	-----------	-----------	-----------	-----------	-----------	-----------	-----------	-----------	-----------	-----------	-----------	-----------	-----------	-----------	-----------	-----------	-----------	-----------	-----------	-----------	-----------	-----------	-----------	-----------	-----------	-----------	-----------	-----------	-----------	-----------	-----------	-----------	-----------	-----------	-----------	-----------	-----------	-----------	-----------	-----------	-----------	-----------	-----------	-----------	-----------	-----------	-----------	-----------	-----------	-----------	-----------	-----------	-----------	-----------	-----------	-----------	-----------	-----------	-----------	-----------	-----------	-----------	-----------	-----------	-----------	-----------	-----------	-----------	-----------	-----------	-----------	-----------	-----------	-----------	-----------	-----------	-----------	-----------	-----------	-----------	-----------	-----------	-----------	-----------	-----------	-----------	-----------	-----------	-----------	-----------	-----------	-----------	-----------	-----------	-----------	-----------	-----------	-----------	-----------	-----------	-----------	-----------	-----------	-----------	-----------	-----------	-----------	-----------	-----------	-----------	-----------	-----------	-----------	-----------	-----------	-----------	-----------	-----------	-----------	-----------	-----------	-----------	-----------	-----------	-----------	-----------	-----------	-----------	-----------	-----------	-----------	-----------	-----------	-----------	-----------	-----------	-----------	-----------	-----------	-----------	-----------	-----------	-----------	-----------	-----------	-----------	-----------	-----------	-----------	-----------	-----------	-----------	-----------	-----------	-----------	-----------	-----------	-----------	-----------	-----------	-----------	-----------	-----------	-----------	-----------	-----------	-----------	-----------	-----------	-----------	-----------	-----------	-----------	-----------	-----------	-----------	-----------	-----------	-----------	-----------	-----------	-----------	-----------	-----------	-----------	-----------	-----------	-----------	-----------	-----------	-----------	-----------	-----------	-----------	-----------	-----------	-----------	-----------	-----------	-----------	-----------	-----------	-----------	-----------	-----------	-----------	-----------	-----------	-----------	-----------	-----------	-----------	-----------	-----------	-----------	-----------	-----------	-----------	-----------	-----------	-----------	-----------	-----------	-----------	-----------	-----------	-----------	-----------	-----------	-----------	-----------	-----------	-----------	-----------	-----------	-----------	-----------	-----------	-----------	-----------	-----------	-----------	-----------	-----------	-----------	-----------	-----------	-----------	-----------	-----------	-----------	-----------	-----------	-----------	-----------	-----------	-----------	-----------	-----------	-----------	-----------	-----------	-----------	-----------	-----------	-----------	-----------	-----------	-----------	-----------	-----------	-----------	-----------	-----------	-----------	-----------	-----------	-----------	-----------	-----------	-----------	-----------	-----------	-----------	-----------	-----------	-----------	-----------	-----------	-----------	-----------	-----------	-----------	-----------	-----------	-----------	-----------	-----------	-----------	-----------	-----------	-----------	-----------	-----------	-----------	-----------	-----------	-----------	-----------	-----------	-----------	-----------	-----------	-----------	-----------	-----------	-----------	-----------	-----------	-----------	-----------	-----------	-----------	-----------	-----------	-----------	-----------	-----------	-----------	-----------	-----------	-----------	-----------	-----------	-----------	-----------	-----------	-----------	-----------	-----------	-----------	-----------	-----------	-----------	-----------	-----------	-----------	-----------	-----------	-----------	-----------	-----------	-----------	-----------	-----------	-----------	-----------	-----------	-----------	-----------	-----------	-----------	-----------	-----------	-----------	-----------	-----------	-----------	-----------	-----------	-----------	-----------	-----------	-----------	-----------	-----------	-----------	-----------	-----------	-----------	-----------	-----------	-----------	-----------	-----------	-----------	-----------	-----------	-----------	-----------	-----------	-----------	-----------	-----------	-----------	-----------	-----------	-----------	-----------	-----------	-----------	-----------	-----------	-----------	-----------	-----------	-----------	-----------	-----------	-----------	-----------	-----------	-----------	-----------	-----------	-----------	-----------	-----------	-----------	-----------	-----------	-----------	-----------	-----------	-----------	-----------	-----------	-----------	-----------	-----------

Ministère de l'Énergie et des Ressources  
Service de la Géoinformation  
Date: 15 SEP 1987  
No G.M.: 45313

Note: Culler, Maine (NAA, 24.0 kHz) station used: Readings taken facing North, Fraser filter calculated S-N.

TYPE OF WORK	Very Low Frequency		
<b>ELECTROMAGNETIC SURVEY</b>			
CLIENT	LOCKWOOD PETROLEUM INC.		
PROJECT	AREA	MAZARIN TWP, QUE.	
SURVEY BY	SCALE	DATE	MARCH, 1986
PROSPECTING BEDPHYSICS LTD	1" = 400 ft		
VAL D'OR QUE.	DRAWN BY	MAP NO.	





RANGE II

RANGE II

Tie Line ± 5300 S

Tie Line ± 5300 S

L224 W L216 W L208 W L200 W L192 W L184 W L176 W L168 W L160 W L152 W L144 W L136 W L128 W L120 W L112 W L104 W L96 W L88 W L80 W L72 W L64 W L56 W L48 W L40 W L32 W L24 W L16 W L8 W L0 W



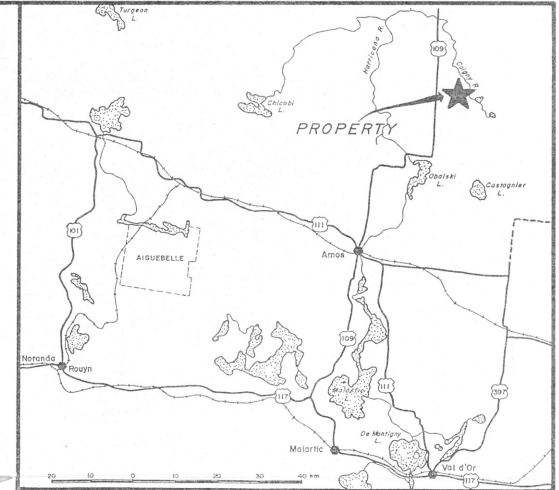
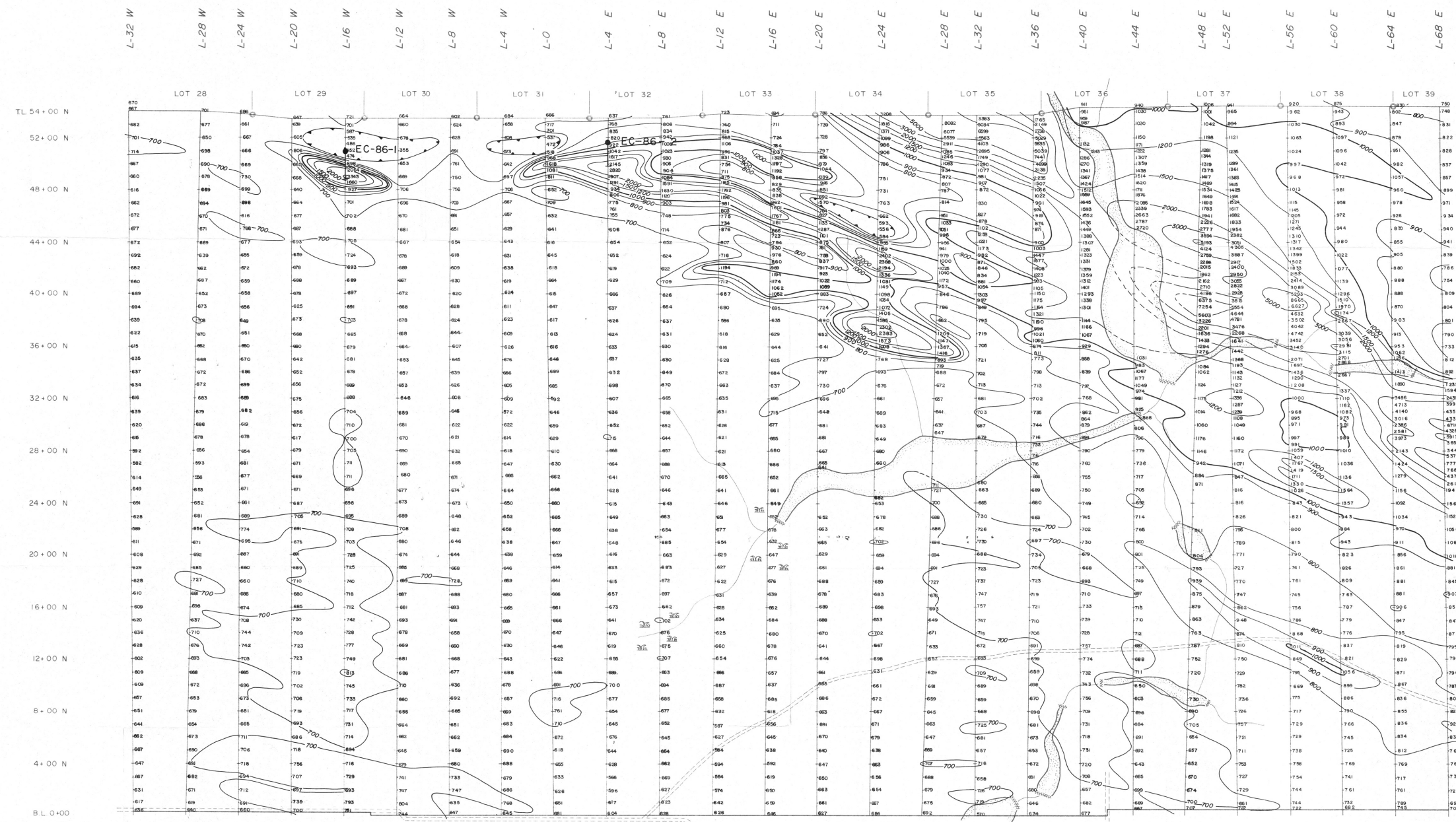
- LEGEND**
- MEASUREMENT STATIONS ALONG PICKET LINES
  - READINGS OF EARTH'S TOTAL MAGNETIC FIELD (in gammas)
  - RECORDED READINGS ARE 58 000g, PLUS PLOTTED VALUES
  - MAGNETIC CONTOURS
  - ▲ BASE STATIONS
  - INSTRUMENT USED: PROTON MAGNETOMETER / BARRINGER G-816
  - MAGNETIC LOW
  - \* SWAMP

Range III	
433307.1	433307.1
433308.1	433308.1
433309.1	433309.1
433310.1	433310.1
433311.1	433311.1
433312.1	433312.1
433313.1	433313.1
433314.1	433314.1
433315.1	433315.1
433316.1	433316.1
433317.1	433317.1
433318.1	433318.1
433319.1	433319.1
433320.1	433320.1
433321.1	433321.1
433322.1	433322.1
433323.1	433323.1
433324.1	433324.1
433325.1	433325.1
433326.1	433326.1
433327.1	433327.1
433328.1	433328.1
433329.1	433329.1
433330.1	433330.1
433331.1	433331.1
433332.1	433332.1
433333.1	433333.1
433334.1	433334.1
433335.1	433335.1
433336.1	433336.1
433337.1	433337.1
433338.1	433338.1
433339.1	433339.1
433340.1	433340.1
433341.1	433341.1
433342.1	433342.1
433343.1	433343.1
433344.1	433344.1
433345.1	433345.1
433346.1	433346.1
433347.1	433347.1
433348.1	433348.1
433349.1	433349.1
433350.1	433350.1
433351.1	433351.1
433352.1	433352.1
433353.1	433353.1
433354.1	433354.1
433355.1	433355.1
433356.1	433356.1
433357.1	433357.1
433358.1	433358.1
433359.1	433359.1
433360.1	433360.1
433361.1	433361.1
433362.1	433362.1
433363.1	433363.1
433364.1	433364.1
433365.1	433365.1
433366.1	433366.1
433367.1	433367.1
433368.1	433368.1
433369.1	433369.1
433370.1	433370.1
433371.1	433371.1
433372.1	433372.1
433373.1	433373.1
433374.1	433374.1
433375.1	433375.1
433376.1	433376.1
433377.1	433377.1
433378.1	433378.1
433379.1	433379.1
433380.1	433380.1
433381.1	433381.1
433382.1	433382.1
433383.1	433383.1
433384.1	433384.1
433385.1	433385.1
433386.1	433386.1
433387.1	433387.1
433388.1	433388.1
433389.1	433389.1
433390.1	433390.1
433391.1	433391.1
433392.1	433392.1
433393.1	433393.1
433394.1	433394.1
433395.1	433395.1
433396.1	433396.1
433397.1	433397.1
433398.1	433398.1
433399.1	433399.1
433400.1	433400.1

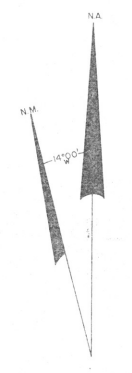
CLAIM MAP  
SCALE: 1:50 000



MAGNETOMETER SURVEY	
CLIENT	LOCKWOOD PETROLEUM INC.
PROJECT	CHASTE TWP., QUE.
SCALE	1" = 400 FT
DATE	NOV., 1985
PROSPECTING GEOPHYSICS LTD.	DRAFTED BY
VAL-D'OR, QUE.	MAP SHEET NO.

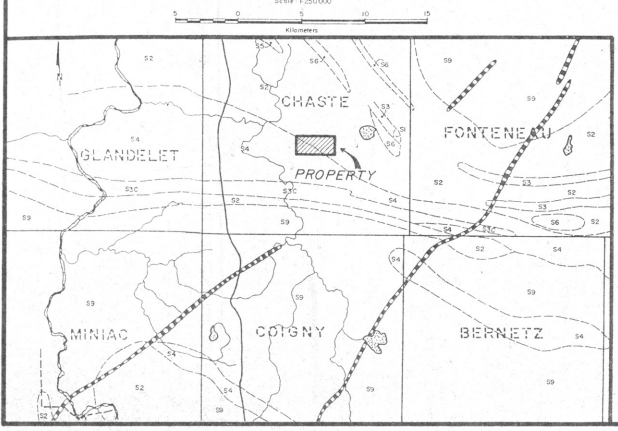


LOCATION MAP



Ministère de l'Énergie et des Ressources  
 Service de la Géoinformation  
 Date: 18 SEP. 1987  
 No G.M.: 45313

REGIONAL GEOLOGY



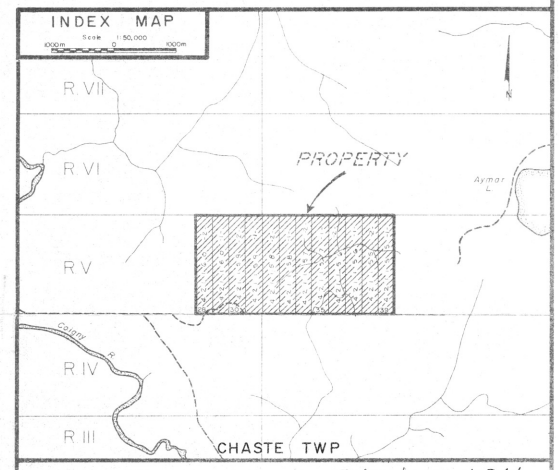
- UNDIFFERENTIATED VOLCANIC AND MAFIC ROCKS; FELSIC VOLCANIC ROCKS; SEDIMENTARY ROCKS; MAFIC INTRUSIVE ROCKS LOCALLY.
- PHYLLOLITE, MIGNONITE, BACITE; HYDROCLASTIC ROCKS AND/OR SEDIMENTARY ROCKS LOCALLY.
- FELSIC PYROCLASTIC ROCKS; FELSIC LAVAS LOCALLY.
- FELSIC PYROCLASTIC AND MAFIC ROCKS; FELSIC LAVAS AND/OR MAFICS LOCALLY.
- UNDIFFERENTIATED CLASTIC SEDIMENTARY ROCKS; CONGLOMERATE, ARGILL. GRAINAGE, CLAY, SHALE, SLTSTONE, SHALE, IRON FORMATIONS; METAMORPHIC ROCKS; MAFIC INTRUSIVE ROCKS AND VOLCANICS LOCALLY.
- MAFIC INTRUSIVE ROCKS.
- DIORITE.
- GRANITIC TO DIORITIC INTRUSIVE ROCKS; REGULITE LOCALLY.
- GRANITE, AMPHIBOLITE, QUARTZ MONZONITE, TONALITE, QUARTZ MONZONITE, TROCTITE, MINOR DYKES AND PORPHYRY; HYBRID ROCKS LOCALLY.
- GRANODIORITE; LOCALITY, QUARTZ DIORITE, PEGMATITE.
- GEOLOGICAL COMPANY
- DIAMOND DYKE



MAG CALCULATION OVER 58,000 GAMMAS

- LESS THAN BACKGROUND
- 700 - 800
- 800 - 900
- 900 - 1000
- 1000 - 1200
- 1200 - 1500
- 1500 - 2000
- 2000 - 3000
- 3000 - 5000
- 5000 - MORE

- ROAD
- CREEK
- BEAVER DAM
- SWAMP
- LOT POST



EASTERN MINES LTD.

MAGNETOMETER SURVEY

TOWNSHIP: CHASTE	SCALE: 1" = 400'
EXECUTED BY: S. Rheaume, J. Duval	October 1985
DRAWN BY: S. Rheaume	October 1985
INTERPRETED BY: S. Rheaume	October 1985
APPROVED BY: E. Ingham	October 1985