

Ministère de l'Énergie et des Ressources
 Service de la Géoinformation
 Date: 15 AVR. 1987
 No G.M.: 44343

PAGE
 75

LEGEND
 Bedrock Lithology

- 4 Quartz-feldspar porphyry
- 3 Intermediate tuffs
- 2 Felsic volcanics
- 1 Intermediate volcanics (1a); mafic volcanics (1b); silicified volcanics (1c); silica-pyrophyllite-chlorotoid altered volcanics (1d); sulfide-silica-carbonate altered volcanics (1e)

- Symbols
- ₁ ○₃ 1985 reverse circulation drill hole No. CA-85-01 with bedrock intersection of Unit 3
 - Formation, Group boundary
 - - - Lithologic boundary (approximate)
 - ~ Fault
 - Synclinal axis
 - x ; ○ Outcrop exposure; area of outcrop exposure
 - ||||| Silicified volcanics (Unit 1c)
 - ||||| Silica-pyrophyllite-chlorotoid altered volcanics (Unit 1d)
 - ||||| Sulfide-silica-carbonate altered volcanics (Unit 1e)
 - t Tourmaline
 - f Fuchsite
 - m Magnetite
 - h Hematite
 - c Fe and/or Mg carbonate

● RECOMMENDED FOLLOW-UP REVERSE CIRCULATION DRILL HOLES

COORDINATES OF RECOMMENDED REVERSE CIRCULATION DRILL HOLES

L24N; 4+00E	BL; 60S
L20N; 3+00E	BL; 62S
L16N; 5+00E	BL; 64S
L4N; 2+00E	BL; 66S
L0; 1+50E	L60S; 5+00W
L4S; 1+50E	L62S; 5+00W
L8S; 1+50E	L64S; 5+00W
BL; 16S	L66S; 5+00W
BL; 58S	L68S; 5+00W

Selco Division
 BP RESOURCES CANADA LIMITED
 CARPENTIER PROJECT

Carpentier Township
 0 1000m
 Scale 1:40,000

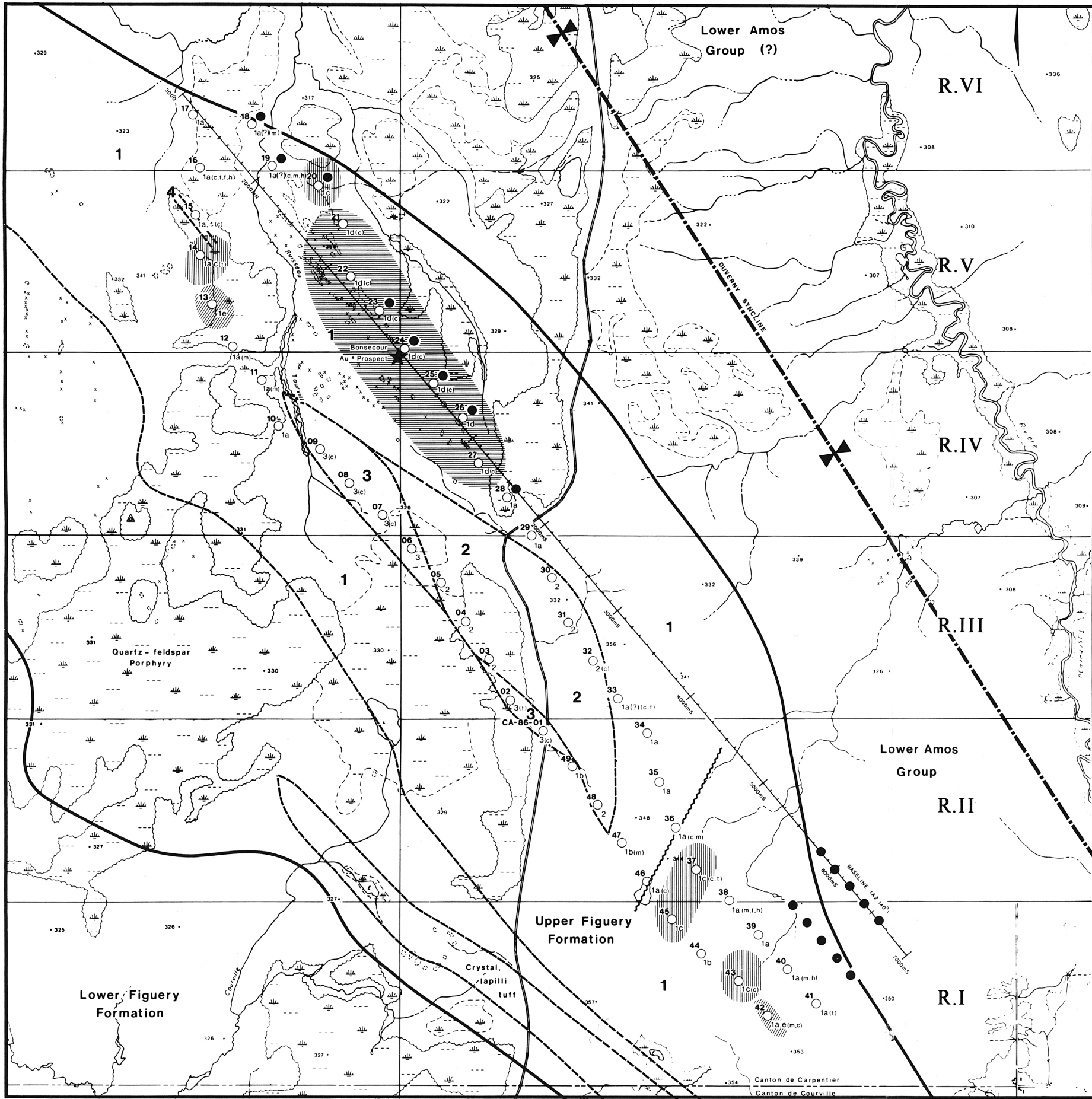
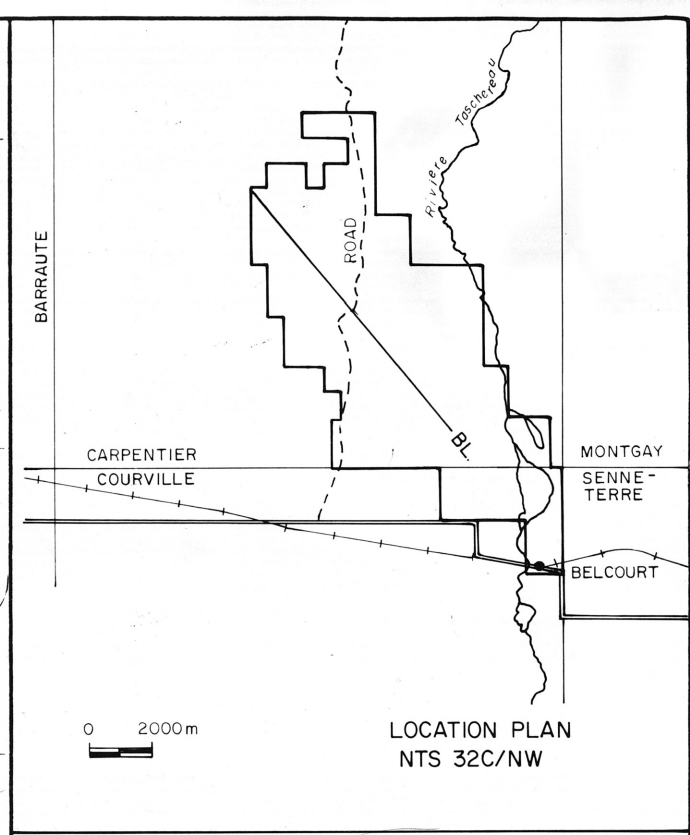
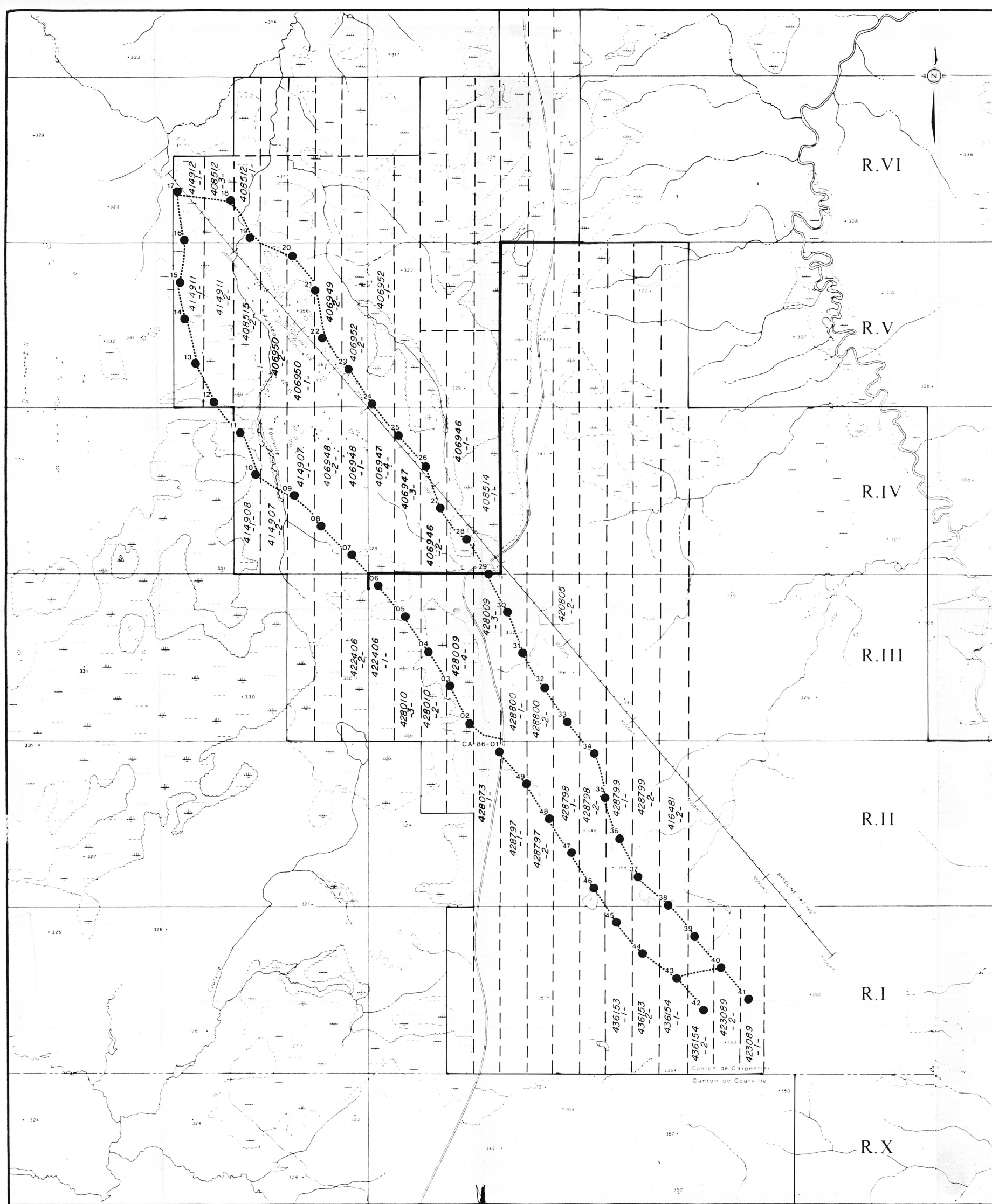


Figure 11 - Recommended Follow-up Exploration



Permis et Baux
 REQU
 1987-02-06
 Québec

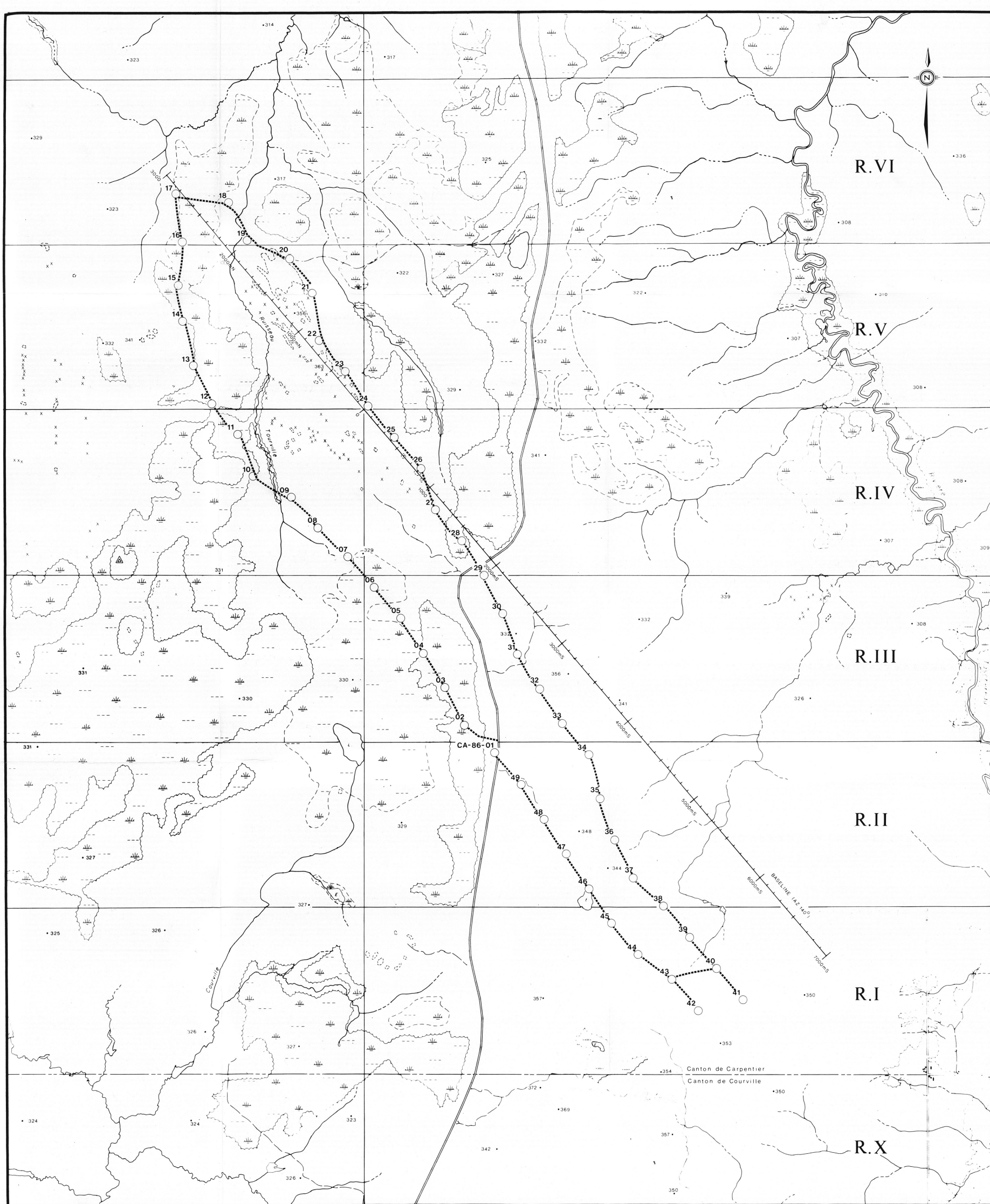
Ministère de l'Énergie et des Ressources
 Service de la Géoinformation
 Date: 15 AVR. 1987
 No G.M.: 44343

Selco Division
 BP RESOURCES CANADA LIMITED
CARPENTIER PROJECT
 Carpentier Township

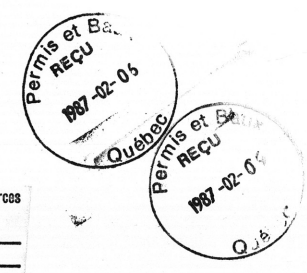
Plan 1
CLAIMS AND
REVERSE CIRCULATION DRILLING

BY OVERBURDEN DRILLING MANAGEMENT LIMITED OCT 1986





Ministère de l'Énergie et des Ressources
 Service de la Géoinformation
 Date: 15 AVR. 1987
 No G.M.: 44343



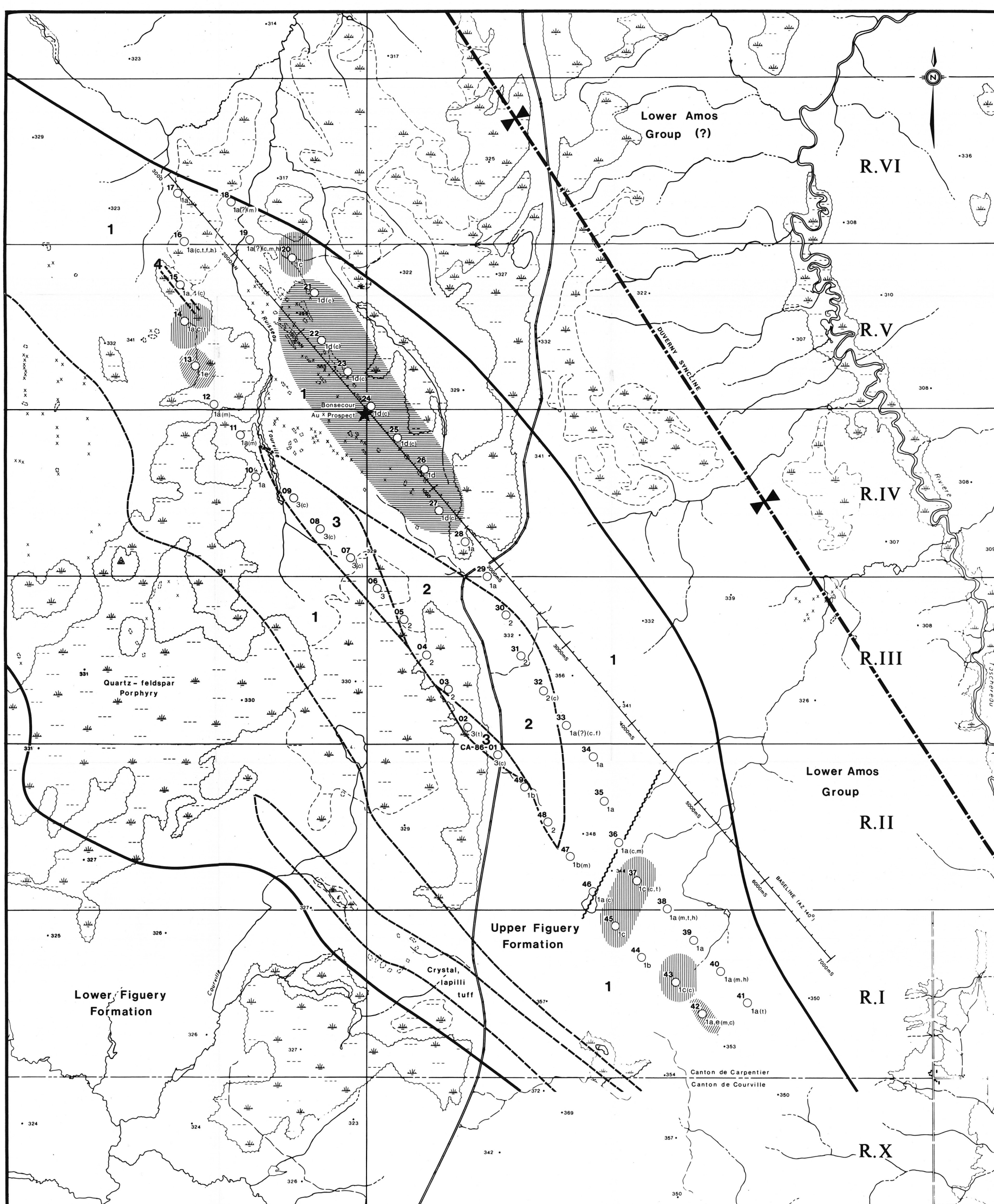
Selco Division
 BP RESOURCES CANADA LIMITED
CARPENTIER PROJECT
 Carpentier Township

Plan 1

DRILL HOLE LOCATIONS

BY OVERBURDEN DRILLING MANAGEMENT LIMITED OCT 1986





LEGEND
Bedrock Lithology

- 4** Quartz-feldspar porphyry
- 3** Intermediate tuffs
- 2** Felsic volcanics
- 1** Intermediate volcanics (1a); mafic volcanics (1b); silicified volcanics (1c); silica-pyrophyllite-chlorotoid altered volcanics (1d); sulfide-silica-carbonate altered volcanics (1e)

Symbols

- 1985 reverse circulation drill hole No. CA-85-01 with bedrock intersection of Unit 3
- Formation, Group boundary
- Lithologic boundary (approximate)
- Fault
- Synclinal axis
- Outcrop exposure; area of outcrop exposure
- Silicified volcanics (Unit 1c)
- Silica-pyrophyllite-chlorotoid altered volcanics (Unit 1d)
- Sulfide-silica-carbonate altered volcanics (Unit 1e)
- t Tourmaline
- f Fuchsite
- m Magnetite
- h Hematite
- c Fe and/or Mg carbonate



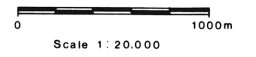
Ministère de l'Énergie et des Ressources
Service de la Géoinformation
Date: 15 AVR. 1987
No G.M.: 44343

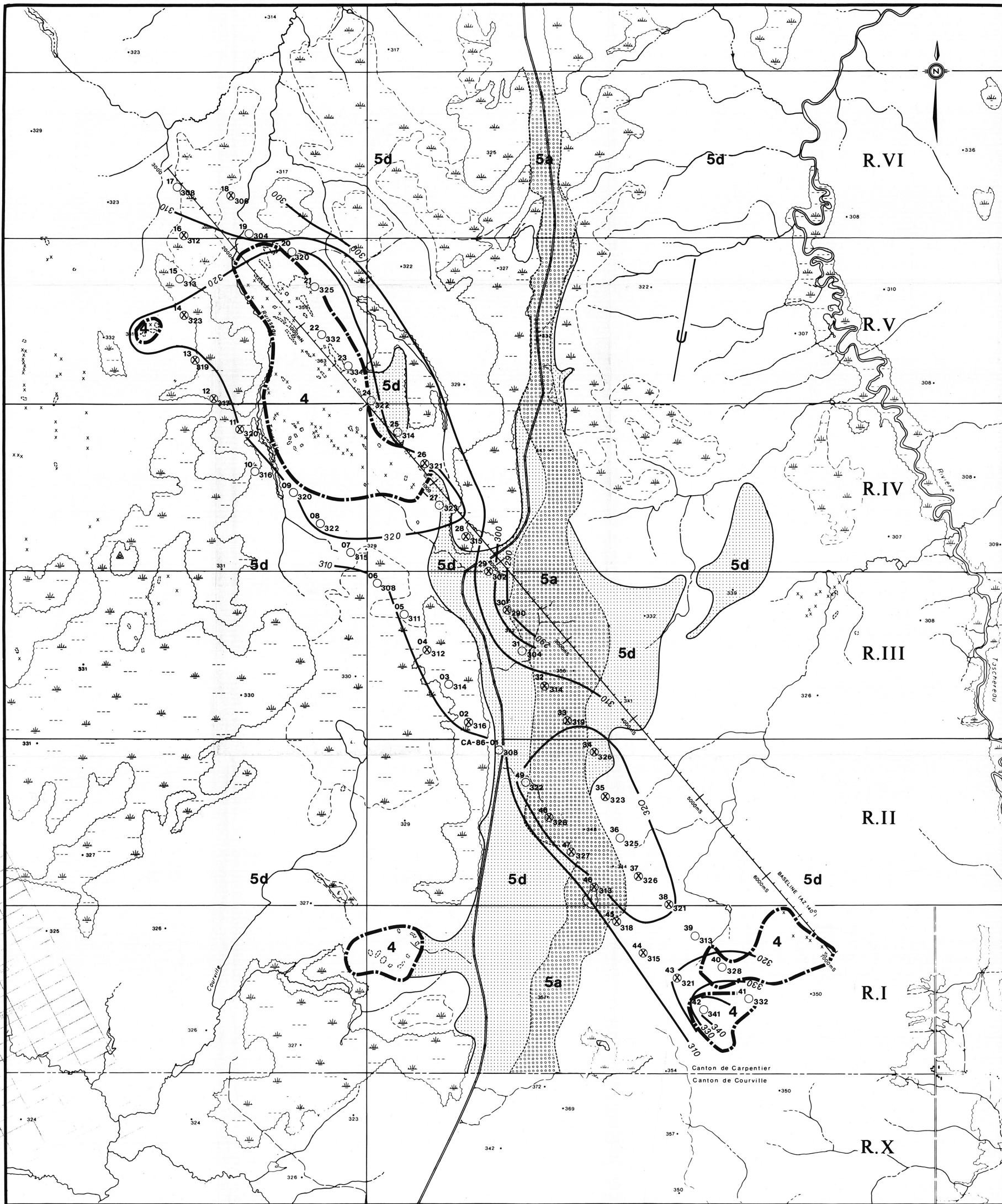
Selco Division
BP RESOURCES CANADA LIMITED
CARPENTIER PROJECT
Carpentier Township

Plan 2

BEDROCK GEOLOGY

BY OVERBURDEN DRILLING MANAGEMENT LIMITED OCT 1986





LEGEND
Quaternary Stratigraphy

- YEARS B.P.
- 10,000 **LATE WISCONSINAN**
 - 7 Cochrane Sediments
 - 7b - glaciolacustrine member
 - 7a - glaciofluvial/morainal member
 - 6 Cochrane Till
 - 5 Ojibway II Sediments
 - 5d - littoral and aeolian member
 - 5c - glaciolacustrine clay member
 - 5b - glaciolacustrine sand member
 - 5a - glaciofluvial member
 - 4 Chibougamau/Matheson Till
 - 100,000 **EARLY WISCONSINAN AND SANGAMON**
 - 3 Missinaibi Sediments
 - 3c - Ojibway I member
 - 3b - forest-peat member
 - 3a - fluvial member
 - ILLINOIAN**
 - 2 Lower Till and Sediments
 - 1,000,000 **YARMOUTH AND KANSAN**
 - 1 Older Till and Sediments

Symbols

- Surfacial geological unit boundary
- - - Surfacial geological sub-unit boundary
- ▨ Littoral spits and terraces
- 310— Elevation of bedrock in metres above sea-level; 10m contour interval
- 01 1986 reverse circulation drill hole CA-86-01; elevation of bedrock surface 308m ASL
- ⊗ 02 1986 reverse circulation drill hole CA-86-02; less than 0.5m of till intersected
- x Outcrop exposure; area of outcrop exposure
- Direction of glacial advance

Ministère de l'Énergie et des Ressources
Service de la Géoinformation
Date: 15 AVR. 1987
No G.M.: 44343



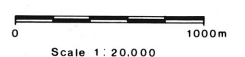
Selco Division
BP RESOURCES CANADA LIMITED
CARPENTIER PROJECT

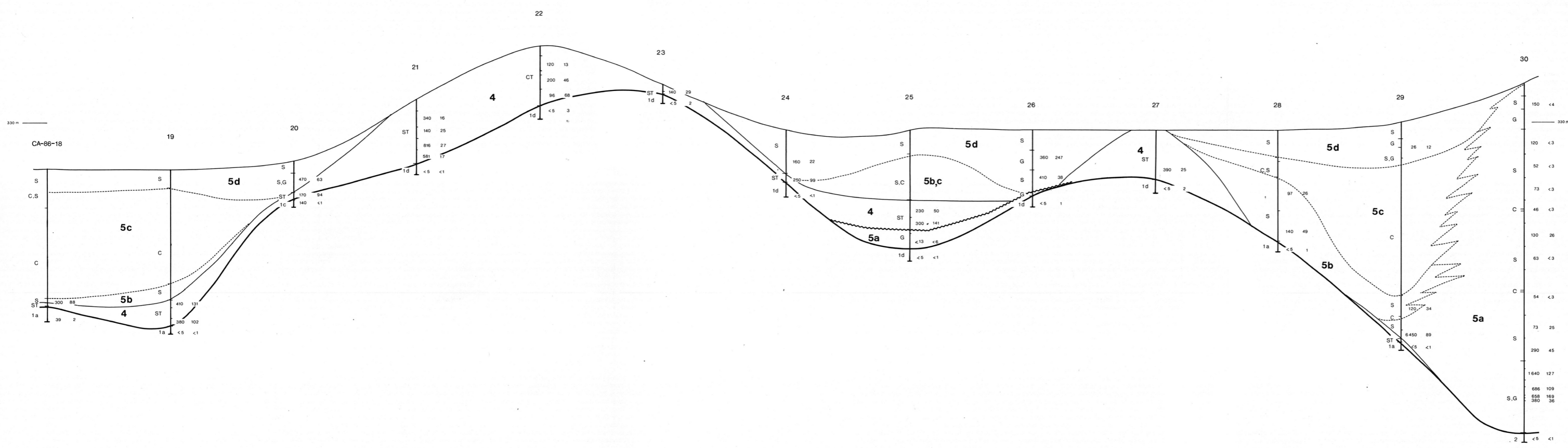
Carpentier Township

Plan 3

SURFICIAL GEOLOGY

BY OVERBURDEN DRILLING MANAGEMENT LIMITED SEPT. 1986





LEGEND

Quaternary Stratigraphy

10,000 **LATE WISCONSINAN**

- 7 Cochrane Sediments
7b - glaciolacustrine member
7a - glaciofluvial/morainal member
- 6 Cochrane Till
- 5 Ojibway II Sediments
5d - littoral and aeolian member
5c - glaciolacustrine clay member
5b - glaciolacustrine sand member
5a - glaciofluvial member
- 4 Chibougamau/Matheson Till

100,000 **EARLY WISCONSINAN AND SANGAMON**

- 3 Missinabi Sediments
3c - Ojibway I member
3b - forest-peat member
3a - fluvial member

ILLINOIAN

- 2 Lower Till and Sediments

1,000,000 **YARMOUTH AND KANSAN**

- 1 Older Till and Sediments

Sediment Varieties

- P Peat
- C Clay, silt
- S Sand
- G Gravel
- ST Sand-silt till; clay subordinate
- CT Clay till

Symbols

- Quaternary/bedrock unconformity
- ~ Glacial unconformity
- Quaternary unit boundary
- Quaternary sub-unit boundary

Geochemistry

114, 37 Sand-silt till interval with 114 ppb Au and 37 ppm As in non-magnetic heavy mineral fraction (S.G. greater than 3.3)

Bedrock Lithology

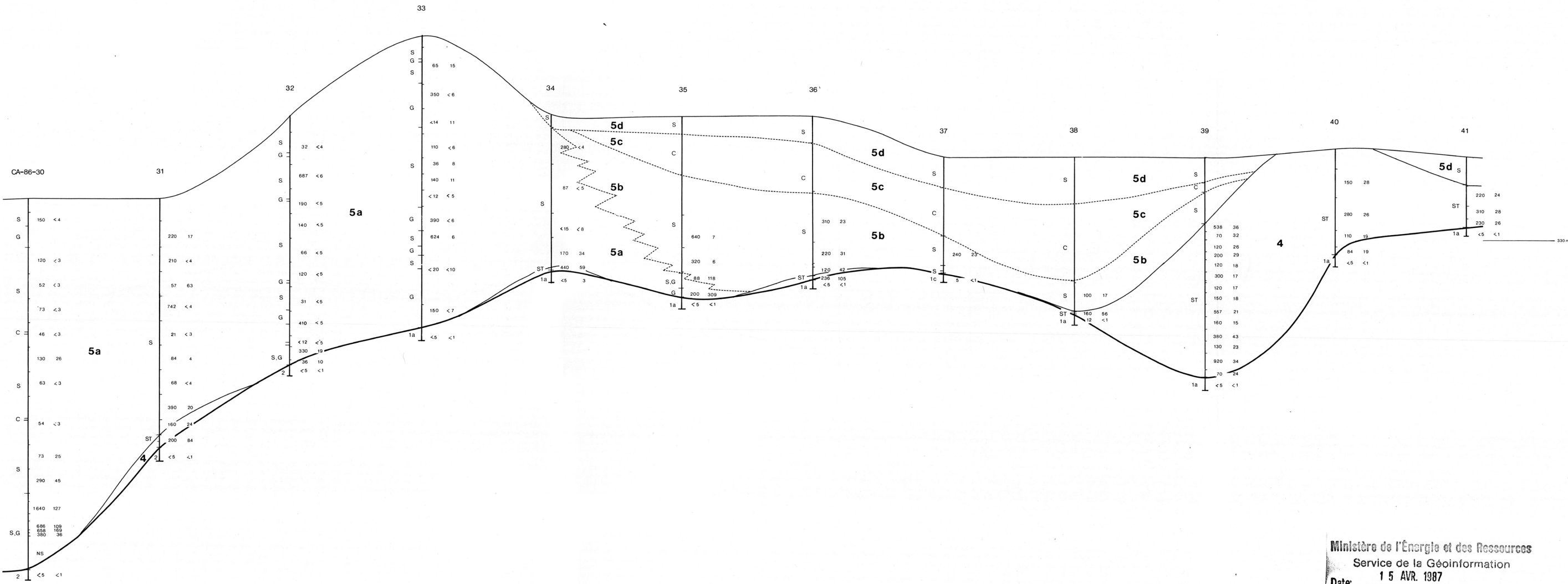
- 4 Quartz-feldspar porphyry
- 3 Intermediate tuffs
- 2 Felsic volcanics
- 1 Intermediate volcanics (1a); mafic volcanics (1b); silicified volcanics (1c); silica-pyrophyllite-chloritoid altered volcanics (1d); sulfide-silica-carbonate altered volcanics (1e)

Scale

HOR. 1:10,000 VERT. 1:400

Ministère de l'Énergie et des Ressources
Service de la Géoinformation
Date: 15 AVR 1987
No G.M.: 44343

Selco Division
BP RESOURCES CANADA LIMITED
CARPENTIER PROJECT
Carpentier Township
Section
A-A'



- LEGEND**
- Quaternary Stratigraphy**
- 10,000 **LATE WISCONSINAN**
- 7 Cochrane Sediments
 - 7b - glaciolacustrine member
 - 7a - glaciofluvial/morainal member
 - 6 Cochrane Till
 - 5 Ojibway II Sediments
 - 5d - littoral and aeolian member
 - 5c - glaciolacustrine clay member
 - 5b - glaciolacustrine sand member
 - 5a - glaciofluvial member
 - 4 Chibougamau/Matheson Till
- 100,000 **EARLY WISCONSINAN AND SANGAMON**
- 3 Missinaibi Sediments
 - 3c - Ojibway I member
 - 3b - forest-peat member
 - 3a - fluvial member
- ILLINOIAN**
- 2 Lower Till and Sediments
- 1,000,000 **YARMOUTH AND KANSAN**
- 1 Older Till and Sediments

- Sediment Varieties**
- P Peat
 - C Clay, silt
 - S Sand
 - G Gravel
 - ST Sand-silt till; clay subordinate
 - CT Clay till

- Symbols**
- Quaternary/bedrock unconformity
 - ~ Glacial unconformity
 - Quaternary unit boundary
 - Quaternary sub-unit boundary

Geochemistry

114, 37 Sand-silt till interval with 114 ppb Au and 37 ppm As in non-magnetic heavy mineral fraction (S.G. greater than 3.3)

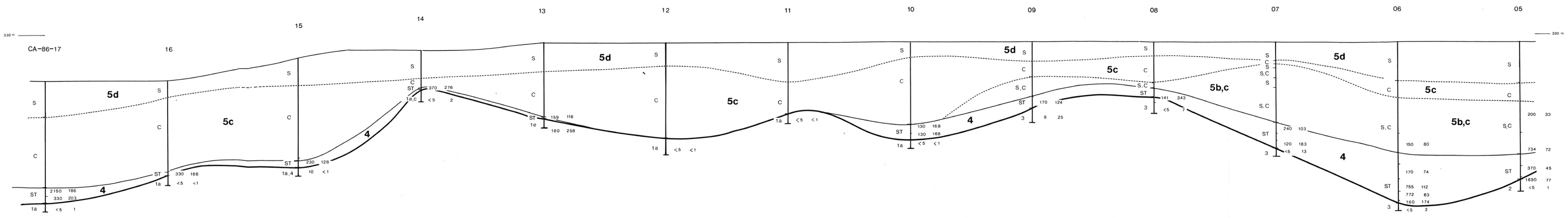
- Bedrock Lithology**
- 4 Quartz-feldspar porphyry
 - 3 Intermediate tuffs
 - 2 Felsic volcanics
 - 1 Intermediate volcanics (1a); mafic volcanics (1b); silicified volcanics (1c); silica-pyrophyllite-chlorotoid altered volcanics (1d); sulfide-silica-carbonate altered volcanics (1e)

Scale

HOR. 1:10,000 VERT. 1:400

Ministère de l'Énergie et des Ressources
 Service de la Géoinformation
 Date: 15 AVR. 1987
 No G.M.: 44343

Selco Division
 BP RESOURCES CANADA LIMITED
CARPENTIER PROJECT
 Carpentier Township
 Section
A'-A''
 BY OVERBURDEN DRILLING MANAGEMENT LIMITED October 1986



LEGEND

Quaternary Stratigraphy

10,000 **LATE WISCONSINAN**

- 7 Cochrane Sediments
 - 7b - glaciolacustrine member
 - 7a - glaciofluvial/morainal member
- 6 Cochrane Till
- 5 Ojibway II Sediments
 - 5d - littoral and aeolian member
 - 5c - glaciolacustrine clay member
 - 5b - glaciolacustrine sand member
 - 5a - glaciofluvial member
- 4 Chibougamau/Matheson Till

100,000 **EARLY WISCONSINAN AND SANGAMON**

- 3 Missinaibi Sediments
 - 3c - Ojibway I member
 - 3b - forest-peat member
 - 3a - fluvial member

ILLINOIAN

- 2 Lower Till and Sediments

1,000,000 **YARMOUTH AND KANSAN**

- 1 Older Till and Sediments

Sediment Varieties

- P Peat
- C Clay, silt
- S Sand
- G Gravel
- ST Sand-silt till; clay subordinate
- CT Clay till

Symbols

- Quaternary/bedrock unconformity
- Glacial unconformity
- Quaternary unit boundary
- Quaternary sub-unit boundary

Geochemistry

- 114, 37 Sand-silt till interval with 114 ppb Au and 37 ppm As in non-magnetic heavy mineral fraction (S.G. greater than 3.3)

Bedrock Lithology

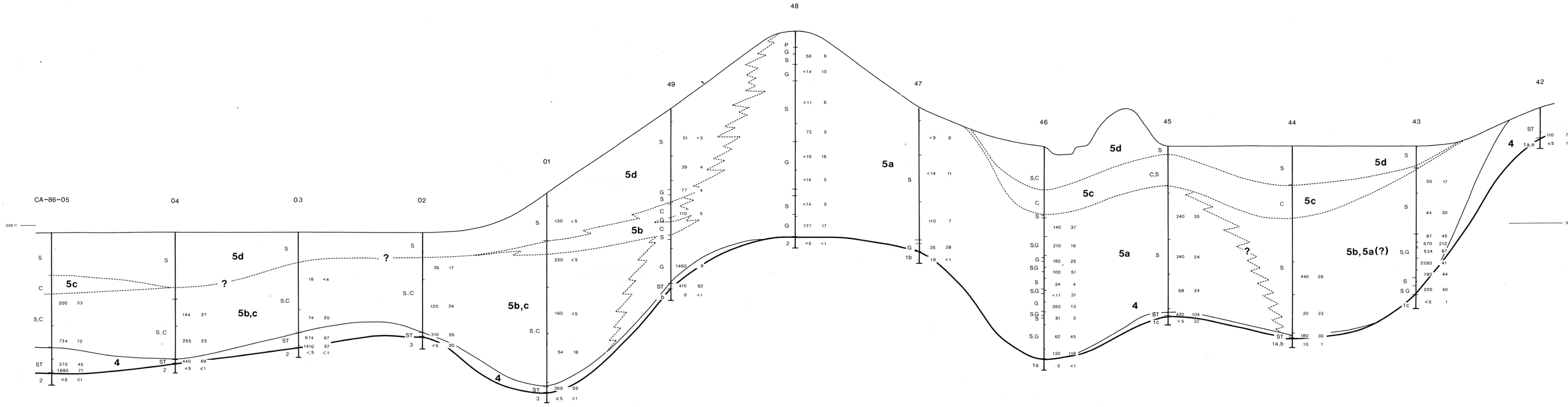
- 4 Quartz-feldspar porphyry
- 3 Intermediate tuffs
- 2 Felsic volcanics
- 1 Intermediate volcanics (1a); mafic volcanics (1b); silicified volcanics (1c); silica-pyrophyllite-chlorotoid altered volcanics (1d); sulfide-silica-carbonate altered volcanics (1e)

Scale

HOR. 1:10,000 VERT. 1:400

Ministère de l'Énergie et des Ressources
 Service de la Géoinformation
 Date: 15 AVR. 1987
 No G.M.: 44343

Selco Division
 BP RESOURCES CANADA LIMITED
CARPENTIER PROJECT
 Carpentier Township
Section B-B'



- LEGEND**
- Quaternary Stratigraphy**
- 10,000 **LATE WISCONSINAN**
- 7 Cochrane Sediments
 - 7b - glaciolacustrine member
 - 7a - glaciofluvial/morainal member
 - 6 Cochrane Till
 - 5 Ojibway II Sediments
 - 5d - littoral and aeolian member
 - 5c - glaciolacustrine clay member
 - 5b - glaciolacustrine sand member
 - 5a - glaciofluvial member
 - 4 Chibougamau/Matheson Till
- 100,000 **EARLY WISCONSINAN AND SANGAMON**
- 3 Missinabi Sediments
 - 3c - Ojibway I member
 - 3b - forest-peat member
 - 3a - fluvial member
- ILLINOIAN**
- 2 Lower Till and Sediments
- 1,000,000 **YARMOUTH AND KANSAN**
- 1 Older Till and Sediments

- Sediment Varieties**
- P Peat
 - C Clay, silt
 - S Sand
 - G Gravel
 - ST Sand-silt till; clay subordinate
 - CT Clay till

- Symbols**
- Quaternary/bedrock unconformity
 - ~ Glacial unconformity
 - Quaternary unit boundary
 - - - Quaternary sub-unit boundary

- Geochemistry**
- 119, 37 Sand-silt till interval with 119 ppb Au and 37 ppm As in non-magnetic heavy mineral fraction (S.G. greater than 3.3)

- Bedrock Lithology**
- 4 Quartz-feldspar porphyry
 - 3 Intermediate tuffs
 - 2 Felsic volcanics
 - 1 Intermediate volcanics (1a); mafic volcanics (1b); silicified volcanics (1c); silica-pyrophyllite-chlorotoid altered volcanics (1d); sulfide-silica-carbonate altered volcanics (1e)

Scale
HOR. 1:10,000 VERT. 1:400

Ministère de l'Énergie et des Ressources
Service de la Géoinformation
Date: 15 AVR. 1987
No G.M.: 44343

Selco Division
BP RESOURCES CANADA LIMITED
CARPENTIER PROJECT
Carpentier Township
Section
B'-B''