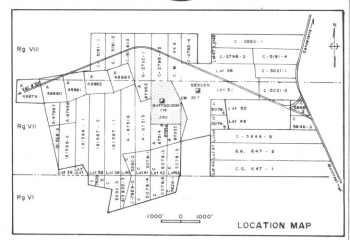


Ministère de l'énergie et des Ressources  
 Service de la Géométrie  
 Date: 13 NOV 1985  
 No. G.M.: 132-29



- LEGEND**
- GRANODIORITE
  - VOLCANICS
  - QUARTZ - FELDSPAR PORPHYRY
  - PRESUMED GEOLOGICAL CONTACT AT SURFACE
  - PRESUMED GEOLOGICAL CONTACT AT 5TH LEVEL
  - SURFACE PROJECTION OF THE 5TH LEVEL
  - FORMER BUFFADISON SHAFT
  - GOLD VALUES IN oz/ton Au-F1
  - DIAMOND DRILL HOLE LOCATIONS

It should be noted that holes MA-85-1 to MA-85-15 were surveyed and therefore their locations may be considered to be precise.



MID CANADA GOLD AND COPPER MINES LTD  
 ABITIBI RESOURCES LTD.  
 JOINT VENTURE

FORMER BUFFADISON SHAFT AREA  
 SURFACE PLAN

<b>GEOLOGICA INC.</b>	
A.J. BEAUREGARD, P. Eng.	K.A. KHORRAM, P. Eng.
NTS/REF: 32 C3	GÉOLOGIE/GEOLOGY: D.L. SULLIVAN
CANTON/TWR: LOUVICOURT	DESSINÉ/DRAWN: Y. ALLAIRE
ÉCHELLE/SCALE: 1" = 50'	REVISÉ/REVISED: K.A. KHORRAM
CARTÉ/MAP NO.:	DATE/DATE: 03/86

14200N

14600N

14800N

14800N

15000N

15200N

15400N

15600N

15800N

360°

SURFACE (10000')

1ST LEVEL (9787')

2ND LEVEL (9643')

3RD LEVEL (9489')

4TH LEVEL (9342')

5TH LEVEL (9195')

6TH LEVEL (9048')

MA-85-2

GRANODIORITE

VOLCANICS

DIP: 30° x 107° x 0.80 m/ft

"B VEIN" Dip: 18° x 103° x 3.90 m/ft (assess)

"L VEIN"

Ministère de l'Énergie et des Ressources  
 Service de la Géoinformation  
 Date: 13 NOV 1995  
 No. C.M. 438773

## LEGEND

1D	GRANODIORITE
2D	DIORITE
3	MAFIC DYKE
2Bf	QUARTZ FELDSPAR PORPHYRY
V9	TUFFS VOLCANICS
QV	QUARTZ VEIN
py	PYRITE
σ	SILICIFIED
-----	MAJOR SHEAR ZONE
*	SHEARED ROCKS
---	GEOLOGICAL CONTACT
---	UNDERGROUND WORKINGS
○	DIAMOND DRILL HOLES
ORE RESERVE CALCULATION	
-----	PROVEN ORE
-----	PROBABLE ORE
-----	INFERRED ORE
-----	ASSAYS: FT - oz/ton Au



MID CANADA GOLD AND COPPER MINES LTD  
 ABITIBI RESOURCES LTD  
 JOINT VENTURE

## SECTION 62+00 E

GEOLOGICA INC. A.J. BEAUREGARD B.Sc.  
 K.A. KHOZI M.Sc.

NTS/REV 32 / C3 GEOLOGIE/GEOLOGY L. SULLIVAN  
 CANTON/TWR LOUVICOURT DESSINÉ/DRAWN Y. ALLAIRE  
 RÉVISÉ/REVISED K.A. KHOZI  
 ÉCHELLE/SCALE 1" = 50' CARTE/MAP NO./ DATE: 03 / 88

14200 N. 14400 N. 14600 N. 14800 N. 15000 N. 15200 N. 15400 N. 15600 N. 15800 N.

360°

MA 85-1B MA 85-1A

SURFACE (10000')

1ST LEVEL (9787')

2ND LEVEL (9643')

3RD LEVEL (9489')

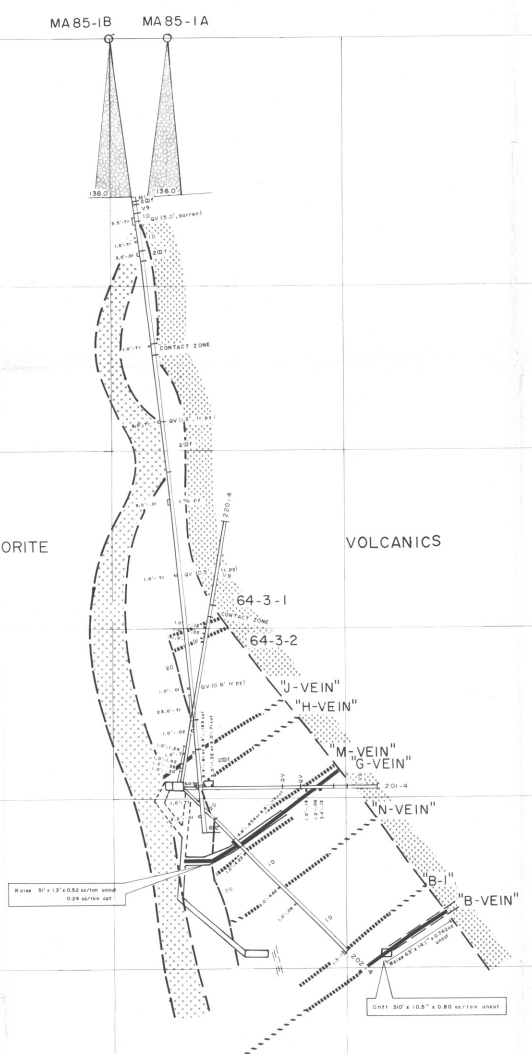
4TH LEVEL (9342')

5TH LEVEL (9195')

6TH LEVEL (9048')

GRANODIORITE

VOLCANICS



Ministère de l'Énergie et des Ressources  
Service de la Géoinformation  
Date: 1 OCT. 1988  
No. G.M.: 132273

**LEGEND**

ID	GRANODIORITE
2D	DIORITE
3	MAFIC DYKE
2Bf	QUARTZ FELDSPAR PORPHYRY
V9	TUFFS VOLCANICS
QV	QUARTZ VEIN
py	PYRITE
σ	SILICIFIED
-----	MAJOR SHEAR ZONE
*	SHEARED ROCKS
---	GEOLOGICAL CONTACT
---	UNDERGROUND WORKINGS
○	DIAMOND DRILL HOLES
<b>ORE RESERVE CALCULATION</b>	
-----	PROVEN ORE
-----	PROBABLE ORE
-----	INFERRED ORE
ASSAYS:	FT - oz/ton Au

MID CANADA GOLD AND COPPER MINES LTD  
ABITIBI RESOURCES LTD  
JOINT VENTURE

**SECTION 64+50 E**

<b>GEOLOGICA INC.</b>	
INTS/REV: 32 / C3	GEOLOGUE: GEOLOGICAL L. SULLIVAN
CANTON/TW: LOUVICOURT	DESSINÉ: GEORGY V. ALLAIRE
	REVISÉ/REVISED: K.A. KHOBZI
ECHELLE/SCALE: 1" = 50'	CARTE/MAP NO.:   DATE: 03/88



Ministère de l'Énergie et des Ressources  
Service de la Géoinformation  
1 OCT 1988  
Date: 13/2/88  
No. G.M.: 132273

### LEGEND

ID	GRANODIORITE
2D	DIORITE
3	MAFIC DYKE
2Bf	QUARTZ FELDSPAR PORPHYRY
V9	TUFFS VOLCANICS
QV	QUARTZ VEIN
py	PYRITE
σ	SILICIFIED
-----	MAJOR SHEAR ZONE
*	SHEARED ROCKS
---	GEOLOGICAL CONTACT
□	UNDERGROUND WORKINGS
○	DIAMOND DRILL HOLES
ORE RESERVE CALCULATION	
—	PROVEN ORE
-----	PROBABLE ORE
-----	INFERRED ORE
ASSAYS:	FT - oz / ton Au

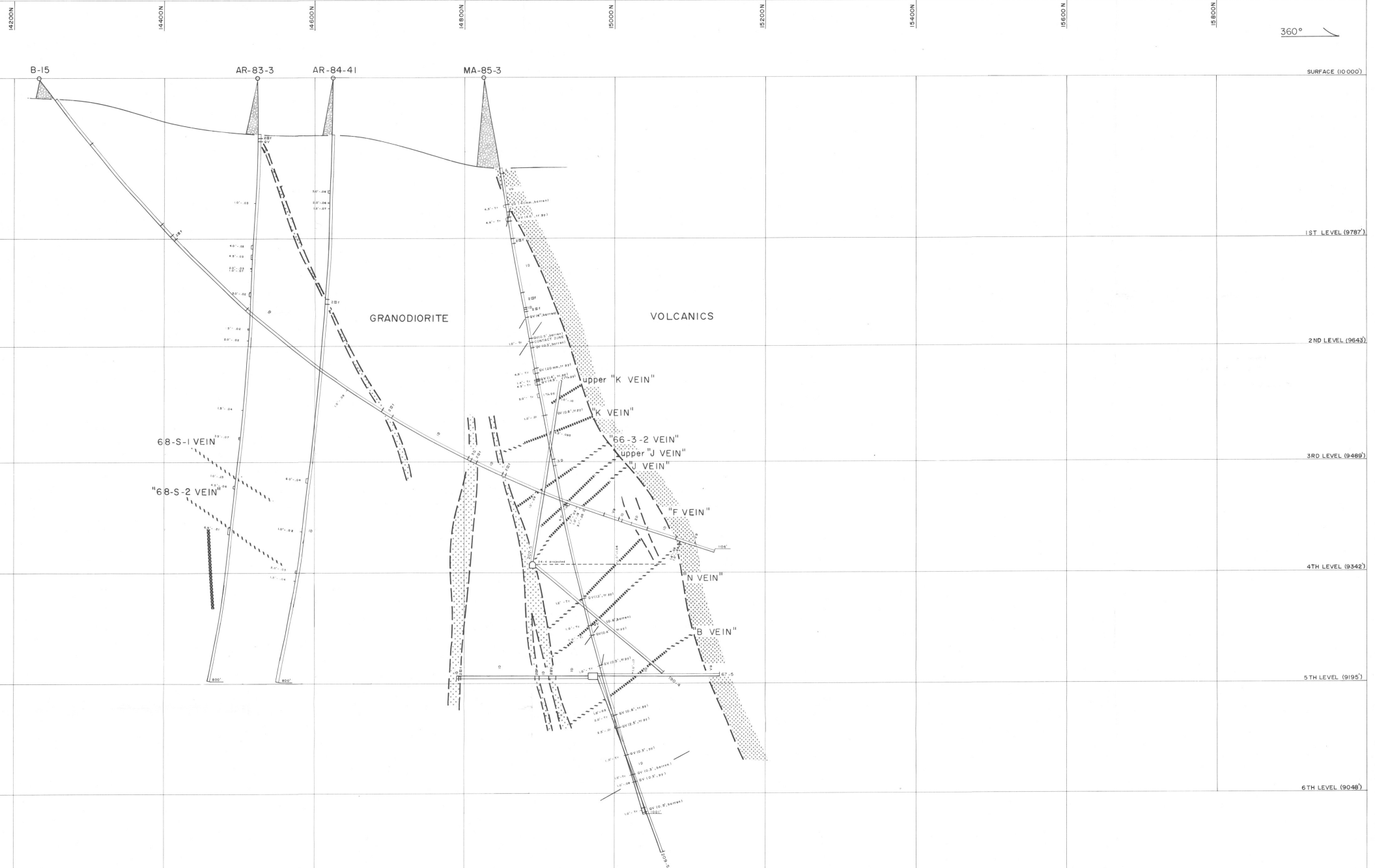


MID CANADA GOLD AND COPPER MINES LTD  
ABITIBI RESOURCES LTD  
JOINT VENTURE

SECTION 66+00 E

GEOLÓGICA INC. A.J. BEAUREGARD S.N.  
K.A. KHOBZI S.N.

NTS/REF/	32 / C3	GÉOLOGIE GEOLOGUE L. SULLIVAN
CANTON/TWR	LOUVICOURT	DESSINÉ/DRAWN/ Y. LAIRE
		REVISE/REVISED/ K.A. KHOBZI
ECHELLE/SCALE/	1" = 50'	CARTE/MAP NO./
		DATE/03/88



Ministère de l'Énergie et des Ressources  
 Service de l'Information  
 Date: 1 OCT 1986  
 No. C.M. 13273

**LEGEND**

- 1D GRANODIORITE
- 2D DIORITE
- 3 MAFIC DYKE
- 2Bf QUARTZ FELDSPAR PORPHYRY
- V9 TUFFS VOLCANICS
- QV QUARTZ VEIN
- py PYRITE
- σ SILICIFIED
- MAJOR SHEAR ZONE
- \* SHEARED ROCKS
- GEOLOGICAL CONTACT
- UNDERGROUND WORKINGS
- DIAMOND DRILL HOLES

**ORE RESERVE CALCULATION**

- PROVEN ORE
- PROBABLE ORE
- INFERRED ORE

ASSAYS: FT - oz/ton Au



MID CANADA GOLD AND COPPER MINES LTD  
 ABITIBI RESOURCES LTD  
 JOINT VENTURE

**SECTION 68+00 E**

<b>GEOLOGICA INC.</b>		A.J. SAUREGARD S.S. K.A. KHOBZI M.Sc.	
NTS/RÉP: 32 / C3	GEOLOGIE/GEOLOGY: D.L. SULLIVAN	DESIGN/DRAWN: Y. ALLAIRE	
CANTON/TWR: LOUVICOURT	REVISE/REVISED: K.A. KHOBZI	DATE: 03 / 88	
ECHELLE/SCALE: 1" = 50'	CARTE/MAP NO.:	DATE: 03 / 88	

MA-85-21

GRANODIORITE

VOLCANICS

"A VEIN"

Ministère de l'Énergie et des Ressources  
 Service de la Géoinformation  
 Date: 13 Mars 1988  
 No. G.M. 13273

**LEGEND**

ID	GRANODIORITE
DI	DIORITE
3	MAFIC DYKE
2Bf	QUARTZ FELDSPAR PORPH
V9	TUFFS VOLCANICS
QV	QUARTZ VEIN
py	PYRITE
σ	SILICIFIED
-----	MAJOR SHEAR ZONE
*	SHEARED ROCKS
---	GEOLOGICAL CONTACT
□	UNDERGROUND WORKINGS
○	DIAMOND DRILL HOLES
ORE RESERVE CALCULATION	
-----	PROVEN ORE
-----	PROBABLE ORE
-----	INFERRED ORE
ASSAYS:	FT - oz/10t Au



MID CANADA GOLD AND COPPER MINES LTD  
 ABITIBI RESOURCES LTD  
 JOINT VENTURE

**SECTION 68+50E**

**GEOLOGICA INC.** A.J. BEAUREGARD S.A. KHOBZI M.Sc.

INT./REV: 32 / C3	GÉOLOGIE/GEOLOGY: L. SULLIVAN
CANTON/TWR: LOUVICOURT	DESSIN/DRAWN: Y. ALLAIRE
	REVISE/REVISED: K.A. KHOBZI
ECHELLE/SCALE: 1" = 50'	CARTE/MAP NO.: DATE: 03 / 88

14200N

14400N

14600N

14800N

15000N

15200N

15400N

15600N

15800N

360°

SURFACE (10 000')

1ST LEVEL (9787')

2ND LEVEL (9643')

3RD LEVEL (9489')

4TH LEVEL (9342')

5TH LEVEL (9195')

6TH LEVEL (9048')



Ministère de l'Énergie et des Ressources  
Service de la Géoinformation  
Date: 1 OCT 1988  
No. G.M. 13223

## LEGEND

10	GRANODIORITE
20	DIORITE
3	MAFIC DYKE
287	QUARTZ FELDSPAR PORPHYRY
V8	TUFFS VOLCANICS
QV	QUARTZ VEIN
py	PYRITE
σ	SILICIFIED
-----	MAJOR SHEAR ZONE
*	SHEARED ROCKS
---	GEOLOGICAL CONTACT
---	UNDERGROUND WORKINGS
○	DIAMOND DRILL HOLES
-----	ORE RESERVE CALCULATION
-----	PROVEN ORE
-----	PROBABLE ORE
-----	INFERRED ORE
ASSAYS:	FT - oz/ton Au



MID CANADA GOLD AND COPPER MINES LTD  
ABITIBI RESOURCES LTD  
JOINT VENTURE

SECTION 69+00E

GEOLOGICA INC.

A.J. BEAUREGARD S.M.  
K.A. KHOBZI M.Sc.

NTS/REF: 32 / CS	GÉOLOGIE/GEOLOGY: L. SULLIVAN
CANTON/TWP: LOUVICOURT	DESSIN/DRAWN: Y. ALLAIRE
	REVISE/REVISED: K.A. KHOBZI
ECHELLE/SCALE: 1" = 50'	CARTE/MAP NO.: DATE: 05/88



14200N

14400N

14600N

14800N

15000N

15200N

15400N

15600N

15800N

360°

B-14

31

MA-85-5B MA-85-5B

SURFACE (10 000')

1ST LEVEL (9787')

2ND LEVEL (9643')

3RD LEVEL (9489')

4TH LEVEL (9342')

5TH LEVEL (9195')

6TH LEVEL (9048')

GRANODIORITE

VOLCANICS

Ministère de l'Énergie et des Ressources  
Service de la Géoinformation  
Date: 1 OCT 1988  
No G.M.: 13273

## LEGEND

- |                         |                          |
|-------------------------|--------------------------|
| 1D                      | GRANODIORITE             |
| 2D                      | DIORITE                  |
| 3                       | MAFIC DYKE               |
| 2Bf                     | QUARTZ FELDSPAR PORPHYRY |
| V9                      | TUFFS VOLCANICS          |
| QV                      | QUARTZ VEIN              |
| py                      | PYRITE                   |
| σ                       | SILICIFIED               |
| -----                   | MAJOR SHEAR ZONE         |
| *                       | SHEARED ROCKS            |
| ---                     | GEOLOGICAL CONTACT       |
| □                       | UNDERGROUND WORKINGS     |
| ○                       | DIAMOND DRILL HOLES      |
| ORE RESERVE CALCULATION |                          |
| —                       | PROVEN ORE               |
| -----                   | PROBABLE ORE             |
| -----                   | INFERRED ORE             |
| ASSAYS:                 | FT - oz/ton Au           |

MID CANADA GOLD AND COPPER MINES LTD  
ABITIBI RESOURCES LTD  
JOINT VENTURE

SECTION 70+00E

GEOLOGICA INC. A.J. BEAUREGARD B.Sc.  
K.A. KHOBZI Ph.D. M.Sc.

NTS #/REV	32 / C3	GÉOLOGIE/GEOLOGIST	L. SULLIVAN
CANTON/REV	LOUVICOURT	DESSINÉ/DRAWN	Y. ALLAIRE
ÉCHELLE/SCALE	1" = 50'	REVISÉ/REVISED	K.A. KHOBZI
		CARTE/MAP NO.	DATE: 03/88

14 800 N. 14 800 N. 14 800 N. 14 800 N. 15 000 N. 15 200 N. 15 400 N. 15 600 N. 15 800 N.

360°



Ministère de l'Énergie et des Ressources  
Service de la Géoinformation  
Date: 1 OCT 1988  
No. G.M.: 13273

**LEGEND**

- ID GRANODIORITE
- 2D DIORITE
- 3 MAFIC DYKE
- 2Bf QUARTZ FELDSPAR PORPHYRY
- VS TUFFS VOLCANICS
- QV QUARTZ VEIN
- py PYRITE
- σ SILICIFIED
- MAJOR SHEAR ZONE
- SHEARED ROCKS
- GEOLOGICAL CONTACT
- UNDERGROUND WORKINGS
- DIAMOND DRILL HOLES

ORE RESERVE CALCULATION

- PROVEN ORE
- PROBABLE ORE
- INFERRED ORE

ASSAYS: FT - oz/ton Au

MID CANADA GOLD AND COPPER MINES LTD  
ABITIBI RESOURCES LTD  
JOINT VENTURE

**SECTION 72+00 E**

**GEOLOGICA INC.**  
A.J. REAUBERG & Co.  
K.A. KHOBZI, P.Eng.

NTS/REF: 32 / C3  
CANTON/TWR: LOUVICOURT  
TECH/SCALE: 1" = 50'

GÉOLOGIE/GEOLOGY: D.L. SULLIVAN  
DESSINÉ/DRAWN: Y. ALLAIRE  
REVISE/RÉVISÉ: K.A. KHOBZI  
CARTES/MAP NO.: [ ] DATE: 03 / 88

14200N

14400N

14600N

14800N

15000N

15200N

15400N

15600N

15800N

360°

SURFACE (10000)

1ST LEVEL (9787)

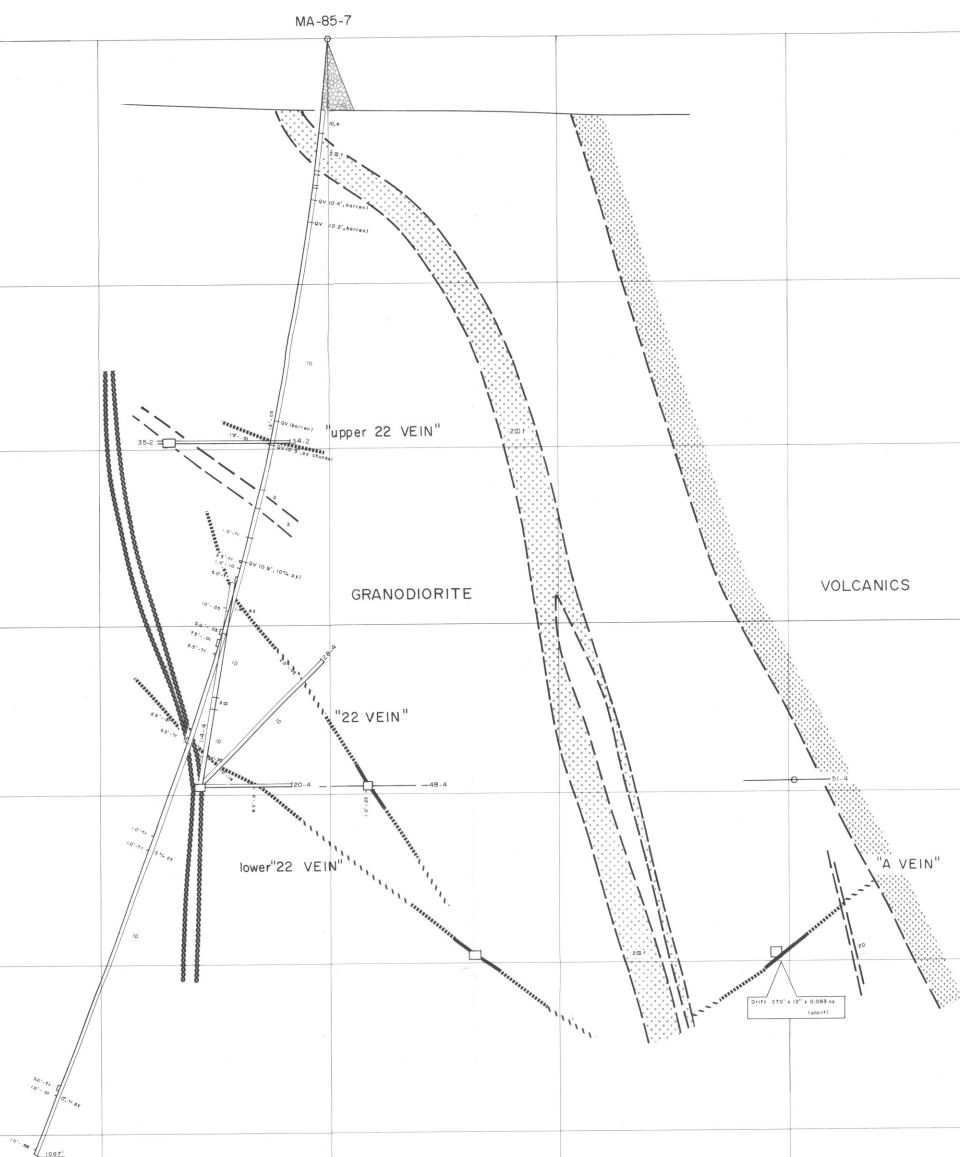
2ND LEVEL (9643)

3RD LEVEL (9489)

4TH LEVEL (9342)

5TH LEVEL (9195)

6TH LEVEL (9048)



Ministère de l'Énergie et des Ressources  
Service de la Géoinformation  
Date: 1 OCT 1988  
No G.M.: 13273

## LEGEND

- 10 GRANODIORITE
  - 20 DIORITE
  - 3 MAFIC DYKE
  - 20f QUARTZ FELDSPAR PORPHYRY
  - V9 TUFFS VOLCANICS
  - QV QUARTZ VEIN
  - py PYRITE
  - σ SILICIFIED
  - MAJOR SHEAR ZONE
  - SHEARED ROCKS
  - GEOLOGICAL CONTACT
  - UNDERGROUND WORKINGS
  - DIAMOND DRILL HOLES
- ORE RESERVE CALCULATION
- PROVEN ORE
  - PROBABLE ORE
  - INFERRED ORE
  - ASSAYS: FT - oz/ton Au



MID CANADA GOLD AND COPPER MINES LTD  
ABITIBI RESOURCES LTD  
JOINT VENTURE

SECTION 72+50 E

GEOLOGICA INC. A.J. BEAUREGARD & S. L.A. KHOBZI & S.

NTS/REF: 32 / C3 GEOLOGIE/GEOLOGY: L. SULLIVAN  
CANTON/TWR: LOUVICOURT DESINE/DRAWN: Y. ALLAIRE  
REVISIONS: K.A. KHOBZI  
ECHELLE/SCALE: 1" = 50' CARTOGRAPH NO./ DATE: 03 / 88

14800N

14800N

14800N

14800N

15000N

15200N

15400N

15600N

15800N

360°

B-12 (25' west of section)

MA-85-8

SURFACE (10 000')

1ST LEVEL (9787')

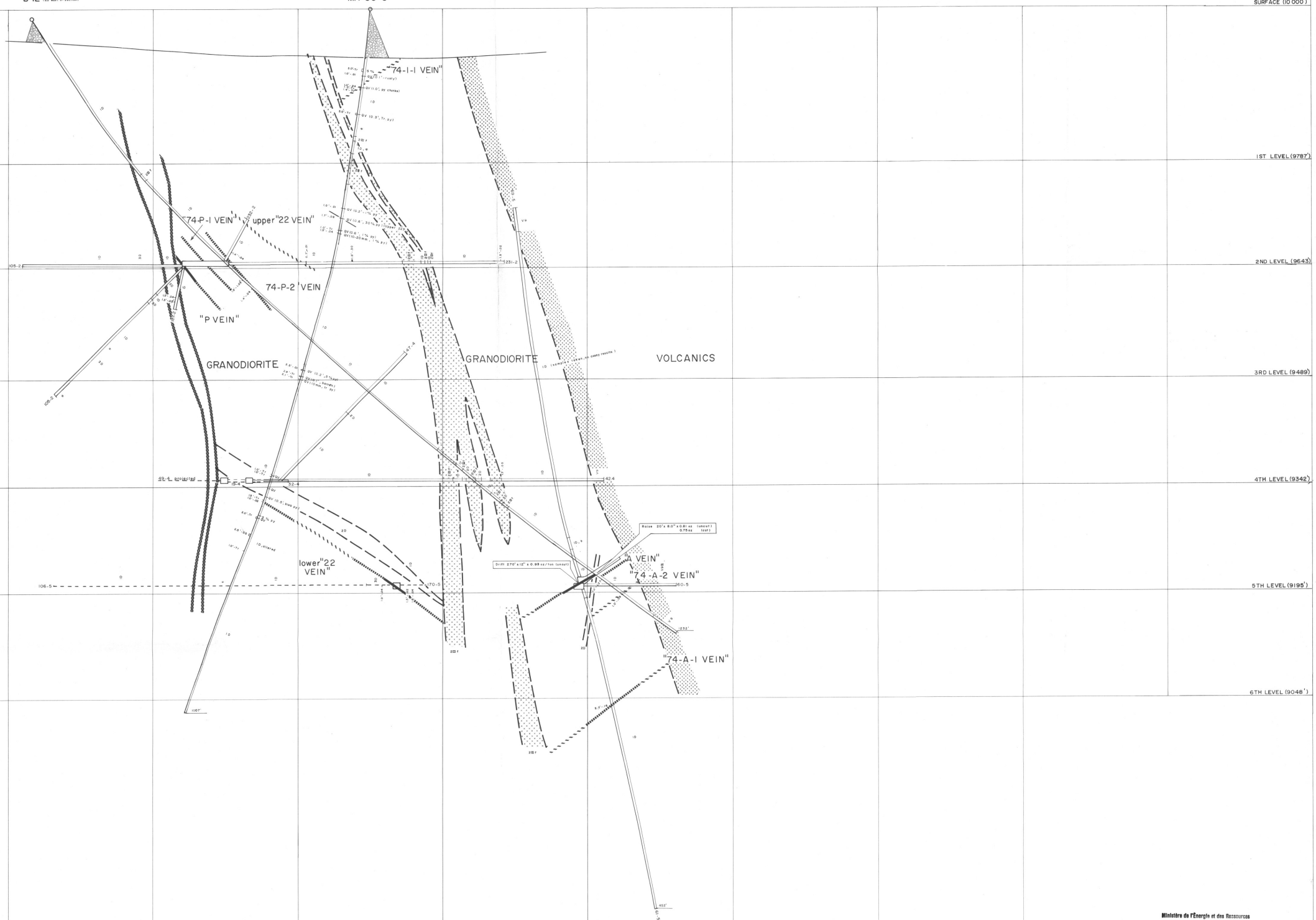
2ND LEVEL (9643')

3RD LEVEL (9489')

4TH LEVEL (9342')

5TH LEVEL (9195')

6TH LEVEL (9048')



Ministère de l'Énergie et des Ressources  
Service de la Géoinformation  
Date: 1 OCT 1988  
No. G.M. 132222

## LEGEND

1D	GRANODIORITE
2D	DIORITE
3	MAFIC DYKE
2B f	QUARTZ FELDSPAR PORPHYRY
V9	TUFFS VOLCANICS
QV	QUARTZ VEIN
py	PYRITE
σ	SILICIFIED
-----	MAJOR SHEAR ZONE
*	SHEARED ROCKS
---	GEOLOGICAL CONTACT
---	UNDERGROUND WORKINGS
○	DIAMOND DRILL HOLES
ORE RESERVE CALCULATION	
---	PROVEN ORE
-----	PROBABLE ORE
-----	INFERRED ORE
-----	ASSAYS: FT - oz/ton Au



MID CANADA GOLD AND COPPER MINES LTD  
ABITIBI RESOURCES LTD  
JOINT VENTURE

SECTION 74+00 E

GEOLOGICA INC. A.J. BEAUREGARD S.S.  
K.A. KHOBZI M.Sc.

NTS/RÉF: 32 / C3 GÉOLOGIE/GEOLOGY: L. SULLIVAN  
CANTON/TWR: LOUVICOURT Dessiné/Drawn: Y. ALLAIRE  
ÉCHELLE/SCALE: 1" = 50' CARTE/MAP NO.: DATE: 03 / 88

14200N

14400N

14600N

14800N

15000N

15200N

15400N

15600N

15800N

360°

MA-85-19

SURFACE (10000)

1ST LEVEL (9787)

2ND LEVEL (9643)

3RD LEVEL (9489)

4TH LEVEL (9342)

5TH LEVEL (9195)

6TH LEVEL (9048)

GRANODIORITE

VOLCANICS

"P VEIN"

Ministère de l'Énergie et des Ressources  
Service de la Géoinformation  
Date: 1 OCT 1998  
No GM: J32223

## LEGEND

ID	GRANODIORITE
2D	DIORITE
3	MAFIC DYKE
2B1	QUARTZ FELDSPAR PORPHYRY
V9	TUFFS VOLCANICS
QV	QUARTZ VEIN
py	PYRITE
σ	SILICIFIED
—————	MAJOR SHEAR ZONE
*	SHEARED ROCKS
—————	GEOLOGICAL CONTACT
□	UNDERGROUND WORKINGS
○	DIAMOND DRILL HOLES
ORE RESERVE CALCULATION	
—————	PROVEN ORE
—————	PROBABLE ORE
—————	INFERRED ORE
○	ASSAYS: FT - oz/ton Au



MID CANADA GOLD AND COPPER MINES LTD  
ABITIBI RESOURCES LTD  
JOINT VENTURE

SECTION 74+50 E

**GEOLOGICA INC.**  
A.J. BEAUREGARD S.N.  
K.A. KHOBZI S.N.S.

NTS/REF: 32 / C3	GÉOLOGIE: GEOLOGICAL SURVEY
CANTON/REF: LOUVICOURT	DESSINÉ/DRAWN: M. TRUDEL
	REVISE/REVISED: K.A. KHOBZI
ÉCHELLE/SCALE: 1" = 50'	CARTES/MAP NO: / DATE: 03 / 98

14200N

14400N

14600N

14800N

15000N

15200N

15400N

15600N

15800N

B-8

AR 83-15

AR 83-22

AR 83-21

SURFACE (10000)

1ST LEVEL (9787)

2ND LEVEL (9643)

3RD LEVEL (9489)

4TH LEVEL (9342)

5TH LEVEL (9195)

6TH LEVEL (9048)

Ministère de l'Énergie et des Ressources  
 Service de la Géoinformation  
 Date: 13/08/93  
 No. G.M.: 132573



MID CANADA GOLD AND COPPER MINES LTD  
 ABITIBI RESOURCES LTD  
 JOINT VENTURE

SECTION 75+00 E

GEOLOGICA INC. A.J. BEAUREGARD & R. K.A. KHOBZI

NTS/RÉF: 32 / C3	GÉOLOGIE/GEOLOGY: L. SULLIVAN
CANTON/TWR: LOUVICOURT	DESSINÉ/DRAWN: K.A. KHOBZI
ÉCHELLE/SCALE: 1" = 50'	REVISÉ/REVISED: K.A. KHOBZI
	CARTE/MAP NO.: DATE: 03 / 86

14200N

14400N

14600N

14800N

15000N

15200N

15400N

15600N

15800N

360°

MA-85-18

SURFACE (10000')

1ST LEVEL (9787')

2ND LEVEL (9643')

3RD LEVEL (9486')

4TH LEVEL (9342')

5TH LEVEL (9195')

6TH LEVEL (9048')

GRANODIORITE

VOLCANICS

"A VEIN"

Ministère de l'Énergie et des Ressources  
 Service de la Géoinformation  
 Date: 13/02/88  
 No. G.M.: 132273

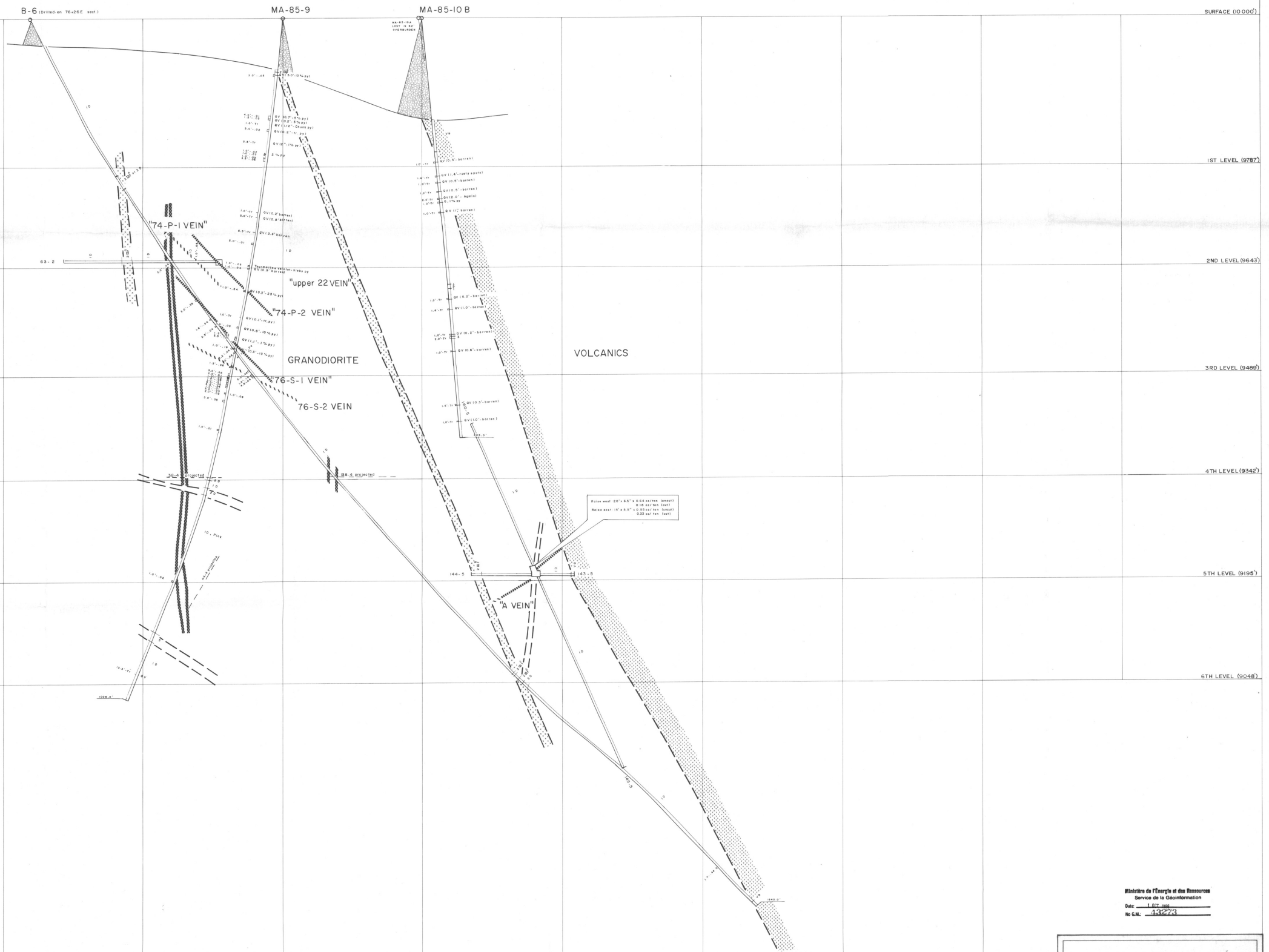
## LEGEND

1D	GRANODIORITE
2D	DIORITE
3	MAFIC DYKE
2Bf	QUARTZ FELDSPAR PORPHYRY
V9	TUFFS VOLCANICS
QV	QUARTZ VEIN
py	PYRITE
σ	SILICIFIED
-----	MAJOR SHEAR ZONE
*	SHEARED ROCKS
---	GEOLOGICAL CONTACT
---	UNDERGROUND WORKINGS
○	DIAMOND DRILL HOLES
ORE RESERVE CALCULATION	
-----	PROVEN ORE
-----	PROBABLE ORE
-----	INFERRED ORE
ASSAYS:	FT - oz/ton Au

MID CANADA GOLD AND COPPER MINES LTD  
 ABITIBI RESOURCES LTD  
 JOINT VENTURE

SECTION 75+50 E

<b>GEOLOGICA INC.</b>		A.J. BEAUREGARD S.M. K.A. KHOBZI M.S.M.	
NTS ref:	32 / C3	GÉOLOGIE GÉOLOVO. L. BULL	
CANTON/TWR	LOUVICOURT	DESSIN/DRHW	M. TRUDEL
		REVISE/REVISED	K.A. KHOBZI
ECHELLE/SCALE	1" = 50'	CARTE/MAP NO.	[DATE]



Ministère de l'Énergie et des Ressources  
 Service de la Géoinformation  
 Date: 13/05/88  
 No. G.M. 13273

**LEGEND**

- ID GRANODIORITE
- 20 DIORITE
- 3 MAFIC DYKE
- 20f QUARTZ FELDSPAR PORPHYRY
- V9 TUFFS VOLCANICS
- QV QUARTZ VEIN
- py PYRITE
- σ SILICIFIED
- MAJOR SHEAR ZONE
- SHEARED ROCKS
- GEOLOGICAL CONTACT
- UNDERGROUND WORKINGS
- DIAMOND DRILL HOLES

**ORE RESERVE CALCULATION**

- PROVEN ORE
- PROBABLE ORE
- INFERRED ORE

ASSAYS: FT - oz/ton Au

MID CANADA GOLD AND COPPER MINES LTD  
 ABITIBI RESOURCES LTD  
 JOINT VENTURE

**SECTION 76+00 E**

**GEOLOGICA INC.**  
 A.J. BEAUREGARD & Co.  
 K.A. KHOBZI & Co.

NTS/ÉCH. 32 / 50  
 CANTON/WR. LOUVICOURT  
 ÉCHELLE/SCALE 1" = 50'

GÉOLOGIE/GEOLOGY L. SULLIVAN  
 Dessiné/Drawn M. TRUDEL  
 Révisé/Revised K.A. KHOBZI  
 DATE/03/88



14200 N

14400 N

14600 N

14800 N

15000 N

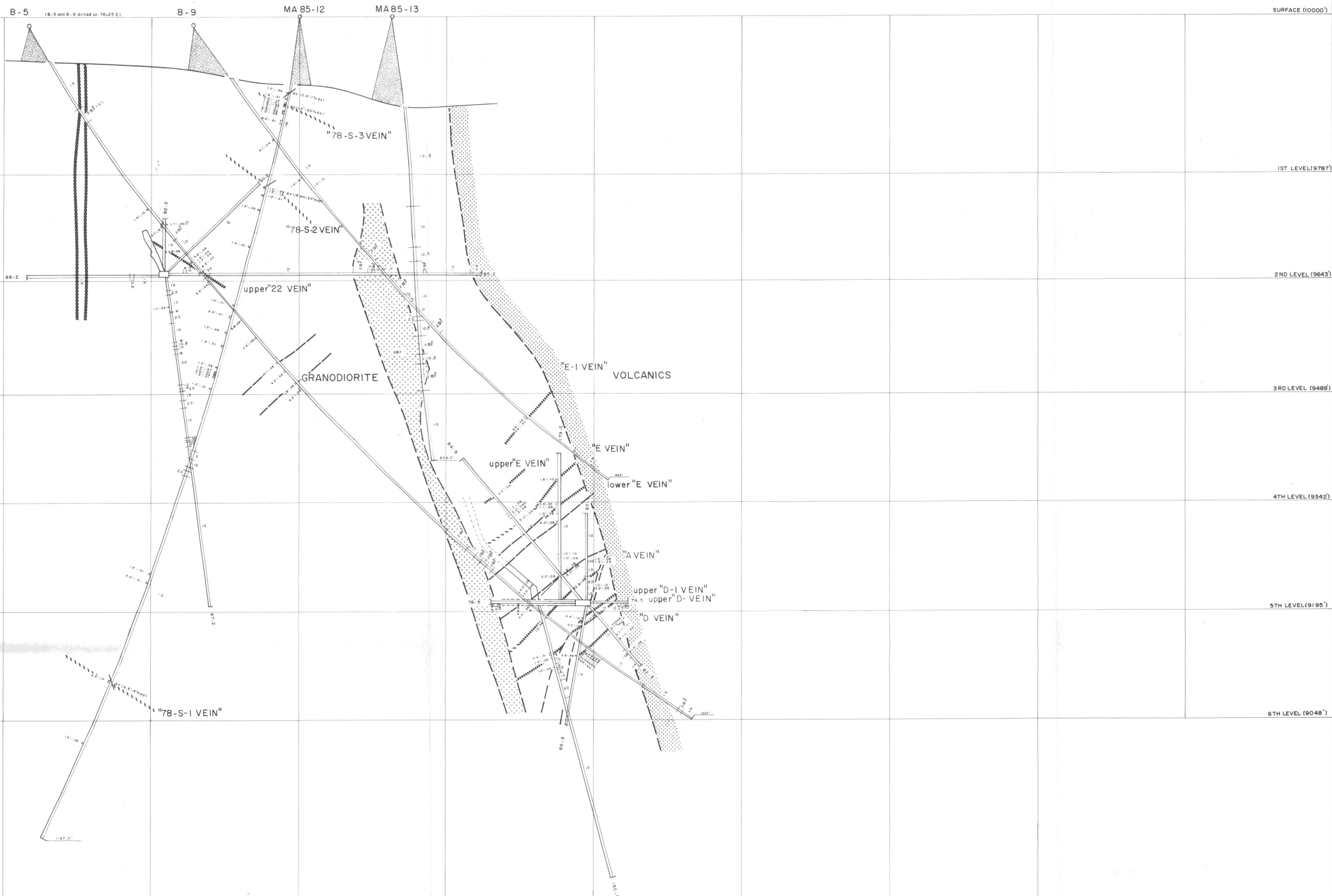
15200 N

15400 N

15600 N

15800 N

360°



Ministère de l'Énergie et des Ressources  
 Service de la Géoinformation  
 Date: 1 OCT 1988  
 No G.M.: 13273

### LEGEND

- 1D GRANODIORITE
- 2D DIORITE
- 3 MAFIC DYKE
- 2Bt QUARTZ FELDSPAR PORPHYRY
- V9 TUFFS VOLCANICS
- QV QUARTZ VEIN
- py PYRITE
- σ SILICIFIED
- MAJOR SHEAR ZONE
- \* SHEARED ROCKS
- GEOLOGICAL CONTACT
- UNDERGROUND WORKINGS
- DIAMOND DRILL HOLES
- ORE RESERVE CALCULATION
- PROVEN ORE
- PROBABLE ORE
- INFERRED ORE
- ASSAYS: FT - oz/ton Au



MID CANADA GOLD AND COPPER MINES LTD  
 ABITIBI RESOURCES LTD  
 JOINT VENTURE

### SECTION 78+00 E

<b>GEOLOGICA INC.</b>		A.J. BEAUREGARD & Co. K.A. KHOBZI M.S.S.	
NTS/REV# 32 / C3	GÉOLOGIE/GEOLOGY D. L. SULLIVAN		
CANTON/TWR LOUVICOURT	DESSINÉ/DRAWN M. TRUDEL		
	REVISÉ/REVISED K.A. KHOBZI		
ÉCHELLE/SCALE 1" = 50'	CARTE/MAP NO./	DATE 03 / 88	

14200 N

14400 N

14600 N

14800 N

15000 N

15200 N

15400 N

15600 N

15800 N

360°

SURFACE (10000')

1ST LEVEL (9787)

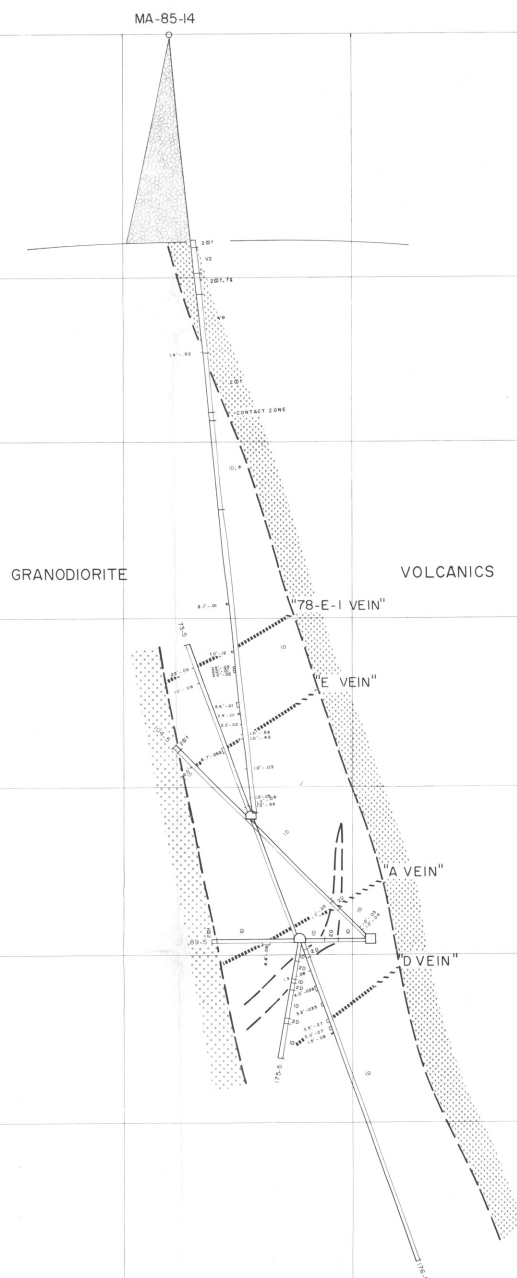
2ND LEVEL (9643)

3RD LEVEL (9489)

4TH LEVEL (9342)

5TH LEVEL (9195)

6TH LEVEL (9048)



Ministère de l'Énergie et des Ressources  
 Service de la Géoinformation  
 Date: 1 OCT 1988  
 No G.M.: 13223

## LEGEND

1D	GRANODIORITE
2D	DIORITE
3	MAFIC DYKE
2QF	QUARTZ FELDSPAR PORPHYRY
V9	TUFFS VOLCANICS
QV	QUARTZ VEIN
py	PYRITE
σ	SILICIFIED
-----	MAJOR SHEAR ZONE
*	SHEARED ROCKS
---	GEOLOGICAL CONTACT
□	UNDERGROUND WORKINGS
○	DIAMOND DRILL HOLES
ORE RESERVE CALCULATION	
-----	PROVEN ORE
-----	PROBABLE ORE
-----	INFERRED ORE
ASSAYS:	FT - oz/ton Au



MID CANADA GOLD AND COPPER MINES LTD  
 ABITIBI RESOURCES LTD  
 JOINT VENTURE

SECTION 79+00E

GEOLOGICA INC. A.J. BEAUREGARD & Co.  
 K.A. KHOZI M.M.S.

INTS/REF: 32 / C3	GÉOLOGIE/GEOLOGY: L. SULLIVAN
CANTON/TWR: LOUVICOURT	DESSINÉ/DRAWN: Y. ALLAIRE
	REVISÉ/REVISED: K.A. KHOZI
ÉCHELLE/SCALE: 1" = 50'	CARTE/MAP NO.: DATE: 03 / 88

14200N

14400N

14600N

14800N

15000N

15200N

15400N

15600N

15800N

360°

SURFACE (10000')

1ST LEVEL (9787')

2ND LEVEL (9643')

3RD LEVEL (9489')

4TH LEVEL (9342')

5TH LEVEL (9195')

6TH LEVEL (9048')

MA-85-15

GRANODIORITE

VOLCANICS

GRANODIORITE



Ministère de l'Énergie et des Ressources  
Service de la Géoinformation  
Date: 1 OCT 1988  
No. G.M.: 132273

## LEGEND

- |                         |                          |
|-------------------------|--------------------------|
| 10                      | GRANODIORITE             |
| 20                      | DIORITE                  |
| 3                       | MAFIC DYKE               |
| 25f                     | QUARTZ FELDSPAR PORPHYRY |
| V9                      | TUFFS VOLCANICS          |
| QV                      | QUARTZ VEIN              |
| PY                      | PYRITE                   |
| S                       | SILICIFIED               |
| -----                   | MAJOR SHEAR ZONE         |
| +                       | SHEARED ROCKS            |
| ---                     | GEOLOGICAL CONTACT       |
| □                       | UNDERGROUND WORKINGS     |
| ○                       | DIAMOND DRILL HOLES      |
| ORE RESERVE CALCULATION |                          |
| —                       | PROVEN ORE               |
| -----                   | PROBABLE ORE             |
| -----                   | INFERRED ORE             |
| ASSAYS:                 | FT - oz/ton Au           |



MID CANADA GOLD AND COPPER MINES LTD  
ABITIBI RESOURCES LTD  
JOINT VENTURE

SECTION 81+00E

**GEOLOGICA INC.**  
A.J. BEAUREGARD & S.  
C.A. KHORRAMI & S.

NTS/RÉF: 32 / G3	GÉOLOGIE/GEOLOGY: L. SULLIVAN
CANTONNÉE: LOUVICOURT	DESSINÉ/DRAWN: V. ALLAIRE
	REVISÉ/REVISED: K.A. KHORRAMI
ÉCHELLE/SCALE: 1" = 50'	CARTE/MAP NO.: [ ] DATE: 03 / 88

B.L.

2+00N

4+00N

6+00N

8+00N

10+00N

12+00N

14+00N

16+00N

360°

S-64-1 MA-85-26

S-64-2

SURFACE

-200'

-400'

-600'

-800'

-1000'

VOLCANICS

DO NOT DRILL DEEPER FROM 2+00N TO 4+00N AS SIGHT FROM ROAD BRIDGE IS

Ministère de l'Énergie et des Ressources  
Service de la Géoinformation  
Date: 13 OCT 1988  
No. G.M.: 130273

LEGEND

- 10 GRANDIORITE
- 20f QUARTZ FELDSPAR PORPHYRY
- 20 DIORITE
- 3 MAFIC DYKE
- V2 RHYOLITE
- V4 DACITE
- V5 INTERMEDIATE LAVAS
- V6 ANDESITE
- V9-4 MAFIC TUFF
- V9-4 INTERMEDIATE TUFF
- V10 AGGLOMERATE
- \* SHEARED ROCK
- σ SILICIFIED
- PORPHYRYTIC (10-50% phenocrysts)
- ▣ PORPHYRY (more than 50% phenocrysts)
- Δ BRECCIA
- UNDERGROUND WORKINGS
- DIAMOND DRILL HOLES
- ASSAYS: ft - oz / ton Au



MID CANADA GOLD AND COPPER MINES LTD  
ABITIBI RESOURCES LTD  
JOINT VENTURE

SECTION 56+00W

GEOLÓGICA INC. A.J. SAUNDERS  
L.A. KHOBZI

NTS/REF: 32 / C3	GÉOLOGIE/GEOL: D.L. SULLIVAN
CANTON/WIV: LOUVICOURT	DESSINÉ/DRAWN: Y. LAURENT
	REVISÉ/REVISED: K.A. KHOBZI
ECHELLE/SCALE: 1" = 50'	CARTE/MAP NO./ DATE: 03 / 88

2400 S

BL

2400 N

4400 N

6400 N

8400 N

10400 N

12400 N

14400 N

360°

SURFACE

MA-85-30

-200'

-400'

-600'

-800'

-1000'

Ministère de l'Énergie et des Ressources

Service de la Géoinformation

Date: 1 OCT 1988

No G.M.: 13273

## LEGEND

1D	GRANODIORITE
2Bf	QUARTZ FELDSPAR PORPHYRY
2D	DIORITE
3	MAFIC DYKE
V2	RHYOLITE
V4	DACITE
V5	INTERMEDIATE LAVAS
V6	ANDESITE
V9-4	MAFIC TUFF
V9-4	INTERMEDIATE TUFF
V10	AGGLOMERATE
*	SHEARED ROCK
σ	SILICIFIED
□	PORPHYRYTIC (10-50% phenocrysts)
▣	PORPHYRY (more than 50% phenocrysts)
Δ	BRECCIA
—	UNDERGROUND WORKINGS
○	DIAMOND DRILL HOLES
ASSAYS:	ft - oz / ton Au

MID CANADA GOLD AND COPPER MINES LTD  
ABITIBI RESOURCES LTD  
JOINT VENTURE

SECTION 88+00W

GEOLOGICA INC.

NTS/REV 32 / CS

CANTON/REV LOUVICOURT

ECHELLE/SCALE 1" = 50'

GÉOLOGIE/GEOLOGY D. L. SULLIVAN

DESIGNÉ/DRAWN Y. ALLAIRE

REVISE/RÉVISÉ K. A. KHOBZI

CARTES/REV NO. 7

DATE: 03/88

4+00N

6+00N

8+00N

10+00N

12+00N

14+00N

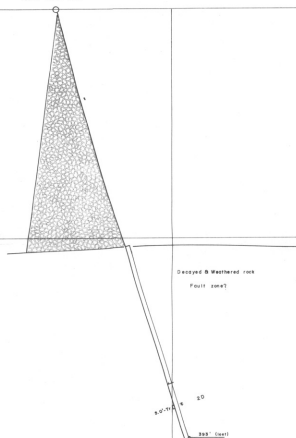
16+00N

18+00N

20+00N

360°

MA-85-27



-200'

-400'

-600'

-800'

-1000'

Ministère des Ressources  
Service de la Géoinformation  
Date: 1 OCT 1986  
No G.M.: 43273

## LEGEND

1D	GRANODIORITE
2Df	QUARTZ FELDSPAR PORPHYRY
2D	DIORITE
3	MAFIC DYKE
V2	RHYOLITE
V4	DACITE
V5	INTERMEDIATE LAVAS
V6	ANDESITE
V9f	MAFIC TUFF
V9-4	INTERMEDIATE TUFF
V10	AGGLOMERATE
#	SHEARED ROCK
σ	SILICIFIED
□	PORPHYRYTIC (10-50% phenocrysts)
▣	PORPHYRY (more than 50% phenocrysts)
△	BRECCIA
—	UNDERGROUND WORKINGS
○	DIAMOND DRILL HOLES
ASSAYS:	ft- oz / ton Au

MID CANADA GOLD AND COPPER MINES LTD  
ABITIBI RESOURCES LTD  
JOINT VENTURE

SECTION 96+00 W

GEOLOGICA INC. A.J. BEAUREGARD, G.S.  
K.A. KHORRAM, M.S.

NTS/REV	32 / C3	GÉOLOGIE/GEOLOGY	D. L. SULLIVAN
CARTOGRAPHE	LOUVICOURT	DESSINÉ/DRAWN	Y. ALLIÈRE
ÉCHELLE/SCALE	1" = 50'	REVISE/RVISÉ	K.A. KHORRAM
		CARTE/MAP NO.	[DATE: 03/86]

44500N

61500N

81000N

101000N

121000N

141000N

161000N

181000N

201000N

360°

MA-85-28

MA-85-22

MA-85-23

SURFACE

-200

-400

-600

-800

-1000

VOLCANICS

MA-85-25

Ministère de l'Énergie et des Ressources  
Service de l'Information  
Date: 1988  
No G.M.: 13273

## LEGEND

1D	GRANODIORITE
2Df	QUARTZ FELDSPAR PORPHYRY
2D	DIORITE
3	MAFIC DYKE
V2	RHYOLITE
V4	DACITE
V5	INTERMEDIATE LAVAS
V6	ANDESITE
V9A	MAFIC TUFF
V9-4	INTERMEDIATE TUFF
V10	AGGLOMERATE
*	SHEARED ROCK
σ	SILICIFIED
□	PORPHYRYTIC (10-50% phenocrysts)
■	PORPHYRY (more than 50% phenocrysts)
Δ	BRECCIA
—	UNDERGROUND WORKINGS
○	DIAMOND DRILL HOLES
ASSAYS:	ft - oz / ton Au

MID CANADA GOLD AND COPPER MINES LTD  
ABITIBI RESOURCES LTD  
JOINT VENTURE

SECTION 100+00 W

GEOLOGICA INC.		A.J. BEAUREGARD, P.Eng.
NTS/RÉV: 32 / C3		GÉOLOGIE/GEOLOGY: L. SULLIVAN
CANTON/TWR: LOUVICOURT	DESSINÉ/DRAWN: Y. ALLAIRE	REVISE/REVISED: K.A. KHOBZI
ECHELLE/SCALE: 1" = 50'	CARTE/MAP NO.:	DATE: 03/88

4+00N

6+00N

8+00N

10+00N

12+00N

14+00N

16+00N

18+00N

20+00N

360°

SURFACE

MA-85-29

-200'

-400'

-600'

-800'

-1000'

Ministère de l'Énergie et des Ressources  
 Service de la Géométrie  
 Date: 1 OCT 1986  
 No G.M. 13273

## LEGEND

1D	GRANODIORITE
2Bf	QUARTZ FELDSPAR PORPHYRY
2D	DIORITE
3	MAFIC DYKE
V2	RHYOLITE
V4	DACITE
V5	INTERMEDIATE LAVAS
V6	ANDESITE
V9A	MAFIC TUFF
V9-4	INTERMEDIATE TUFF
V10	AGGLOMERATE
*	SHEARED ROCK
σ	SILICIFIED
□	PORPHYRY (10-50% phenocrysts)
■	PORPHYRY (more than 50% phenocrysts)
Δ	BRECCIA
—	UNDERGROUND WORKINGS
○	DIAMOND DRILL HOLES
ASSAYS	ft - oz / ton Au

MID CANADA GOLD AND COPPER MINES LTD  
 ABITIBI RESOURCES LTD  
 JOINT VENTURE

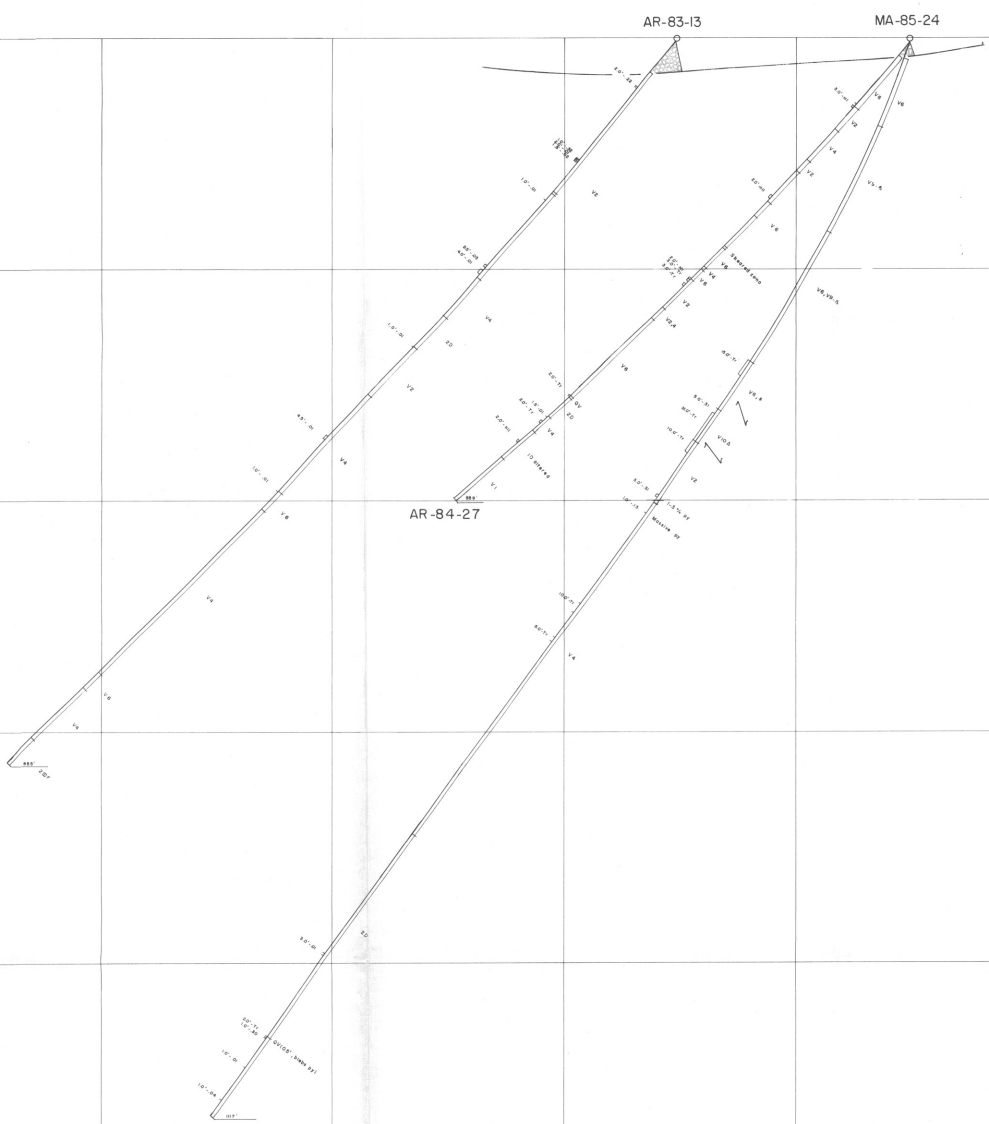
SECTION 104+00W

GEOLOGICA INC.		A.J. BEAUREGARD & S.
		K.A. KHOBZI, P.Eng.
NTS/REV	32 / 03	GÉOLOGIE/GEOLOGY L. SULLIVAN
CANTON/TWR	LOUVICOURT	DESSINÉ/DRAWN Y. ALLAIRE
		REVISÉ/REVISED K.A. KHOBZI
ECHELLE/SCALE	1" = 50'	CARTE/MAP NO./ DATE: 03 / 86



360°

SURFACE



Ministère de l'Énergie et des Ressources  
 Service de la Géoinformation  
 Date: 1 OCT 1988  
 No. G.M.: 13273

LEGEND	
1D	GRANDIORITE
2Bf	QUARTZ FELDSPAR PORPHYRY
2D	DIORITE
3	MAFIC DYKE
V2	RHYOLITE
V4	DACITE
V5	INTERMEDIATE LAVAS
V6	ANDESITE
V9A	MAFIC TUFF
V9-4	INTERMEDIATE TUFF
V10	AGGLOMERATE
*	SHEARED ROCK
σ	SILICIFIED
□	PORPHYRYTIC (10-50% phenocrysts)
▣	PORPHYRY (more than 50% phenocrysts)
Δ	BRECCIA
—	UNDERGROUND WORKINGS
○	DIAMOND DRILL HOLES
ASSAYS:	ft - oz / ton Au

MID CANADA GOLD AND COPPER MINES LTD  
 ABITIBI RESOURCES LTD  
 JOINT VENTURE

SECTION 108+00 W

GEOLOGICA INC.		A.J. BEAUPREARD S.S. E.A. KHOBZI M.S.M.
INTS/RÉF: 32 / C3	GÉOLOGIE/GEOLOGY: L. SULLIVAN	
CANTON/TWR: LOUVICOURT	DESSINÉ/DRAWN: Y. ALLAIRE	
	REVISÉ/REVISED: K.A. KHOBZI	
ECHELLE/SCALE: 1" = 50'	CARTE/MAP NO.:	DATE: 03 / 88

17505

15505

13505

11505

9505

7505

5505

3505

1505

MA-85-16B

SURFACE

-200'

-400'

-600'

-800'

-1000'

Ministère de l'Énergie et des Ressources  
 Service public d'information  
 Date: 13 mai 1988  
 No. G.M. 13273

## LEGEND

1D	GRANODIORITE
2Bf	QUARTZ FELDSPAR PORPHYRY
2D	DIORITE
3	MAFIC DYKE
V2	RHYOLITE
V4	DACITE
V5	INTERMEDIATE LAVAS
V6	ANDESITE
V8A	MAFIC TUFF
V9-A	INTERMEDIATE TUFF
V10	AGGLOMERATE
*	SHEARED ROCK
σ	SILICIFIED
B	PORPHYRYTIC (10-50% phenocrysts)
B	PORPHYRY (more than 50% phenocrysts)
Δ	BRECCIA
□	UNDERGROUND WORKINGS
○	DIAMOND DRILL HOLES
ASSAYS	ft - oz / ton Au

MID CANADA GOLD AND COPPER MINES LTD  
 ABITIBI RESOURCES LTD  
 JOINT VENTURE

SECTION 118+00 W

GEOLOGICA INC.

ÉCHÉLLE/SCALE	1" = 50'	DATE/DATE	03/88
PROJÉCTÉ PAR/PROJECTED BY	A.J. BEAUREGARD	REVISÉ PAR/REVIEWED BY	V.A. KHORZI
DRAWN BY	LOUVICOURT	DATE	03/88
REVISIONS			



4+00S

2+00S

B.L.

2+00N

4+00N

6+00N

8+00N

10+00N

12+00N

360°

SURFACE

-200'

-400'

-600'

-800'

-1000'

MA-85-17 B2

MA-85-17 B1

MA-85-17A

MA-85-17

Ministère de l'Énergie et des Ressources  
Service de la Géoinformation  
Date: 1 OCT 1988  
No G.M.: 132223

## LEGEND

1D	GRANODIORITE
2Bf	QUARTZ FELDSPAR PORPHYRY
2D	DIORITE
3	MAFIC DYKE
V2	RHYOLITE
V4	DACITE
V5	INTERMEDIATE LAVAS
V6	ANDESITE
V9-4	MAFIC TUFF
V9-4	INTERMEDIATE TUFF
V10	AGGLOMERATE
*	SHEARED ROCK
σ	SILICIFIED
□	PORPHYRYTIC (10-50% phenocrysts)
▣	PORPHYRY (more than 50% phenocrysts)
△	BRECCIA
—	UNDERGROUND WORKINGS
○	DIAMOND DRILL HOLES
ASSAYS:	ft - oz / ton Au

MID CANADA GOLD AND COPPER MINES LTD  
ABITIBI RESOURCES LTD  
JOINT VENTURE

SECTION 124+00 W

GEOLOGICA INC. A.J. BEAUREGARD S.M.  
CANTONVILLE LOUVICOURT DÉSIGNÉ/DESIGNÉ/DESIGNÉ  
R. A. KHOSLA, P. Eng., M.Sc.

NTS/REF: 32 / 03 GÉOLOGIE/GEOLOGY/D. L. SULLIVAN  
CANTONVILLE LOUVICOURT DÉSIGNÉ/DESIGNÉ/DESIGNÉ  
ÉCHELLE/SCALE: 1" = 50' CARTE/MAP NO. / DATE: 03 / 88