

PROPERTY BOUNDARY November 1982

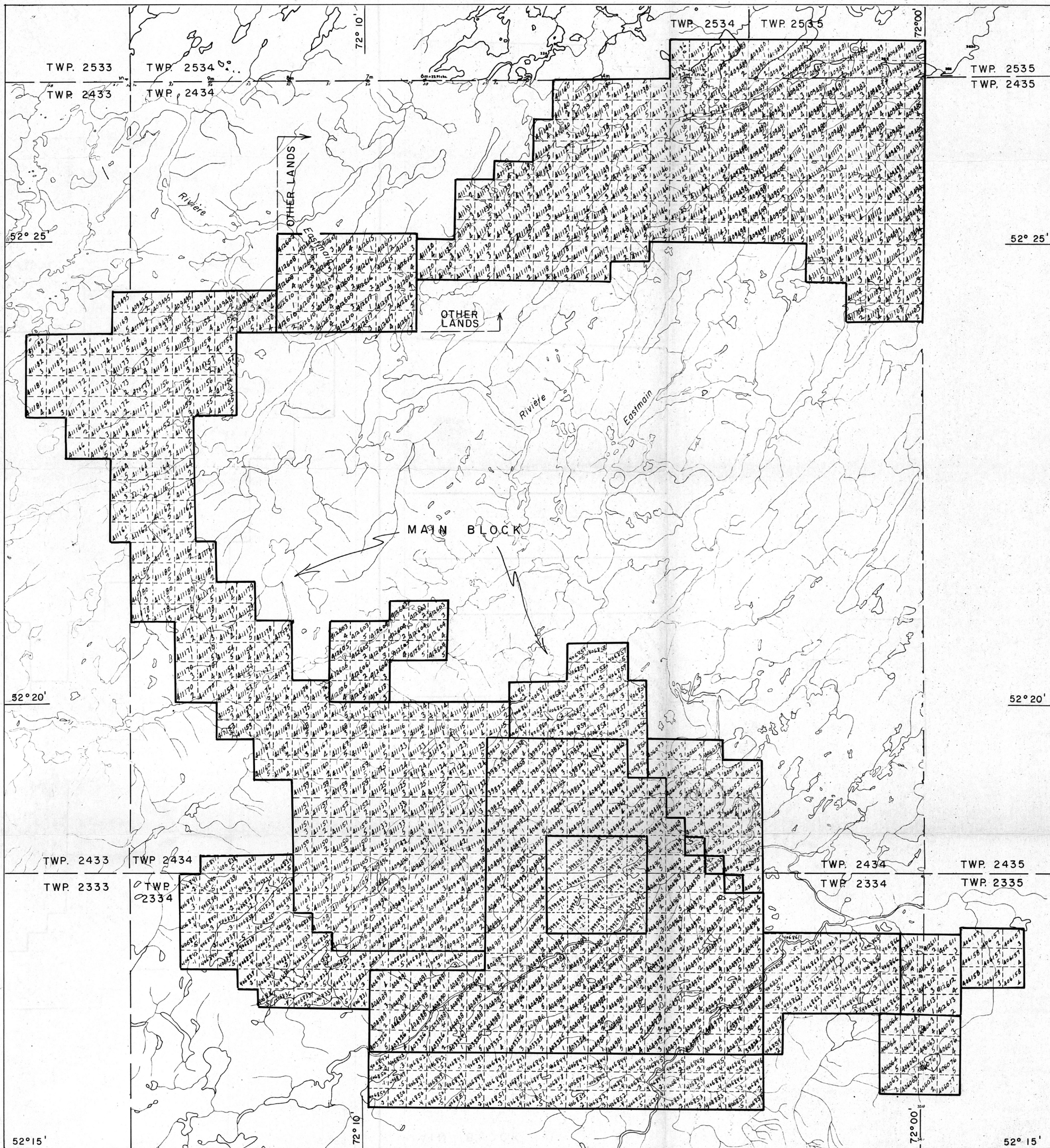
Minstère de l'Énergie et des Ressources
Gouvernement du Québec
Services de la Géoinformation

DATE 1 NOV 1982
No G.M. 40284

PLACER DEVELOPMENT LIMITED
PROPERTY & GRID LOCATION MAP
VII6 EASTMAIN, QUEBEC

SCALE : 1 : 50,000

NTS 33-A-8 & 23-D-5 January, 1983



- staked Jan. 1981 (399289-1 et al) 25 cls.
- staked Sept. 1981 (398257-2 et al) 186 cls.
- staked Jan. 1982 (406830-1 et al) 183 cls.
- staked June 1982 (406063-1 et al) 16 cls.
- staked July 1982 (406072-1 et al) 30 cls.
- staked Aug. 1982 (406157-1 et al) 520 cls.
- staked Nov. 1982 (412603-1 et al) 68 cls.

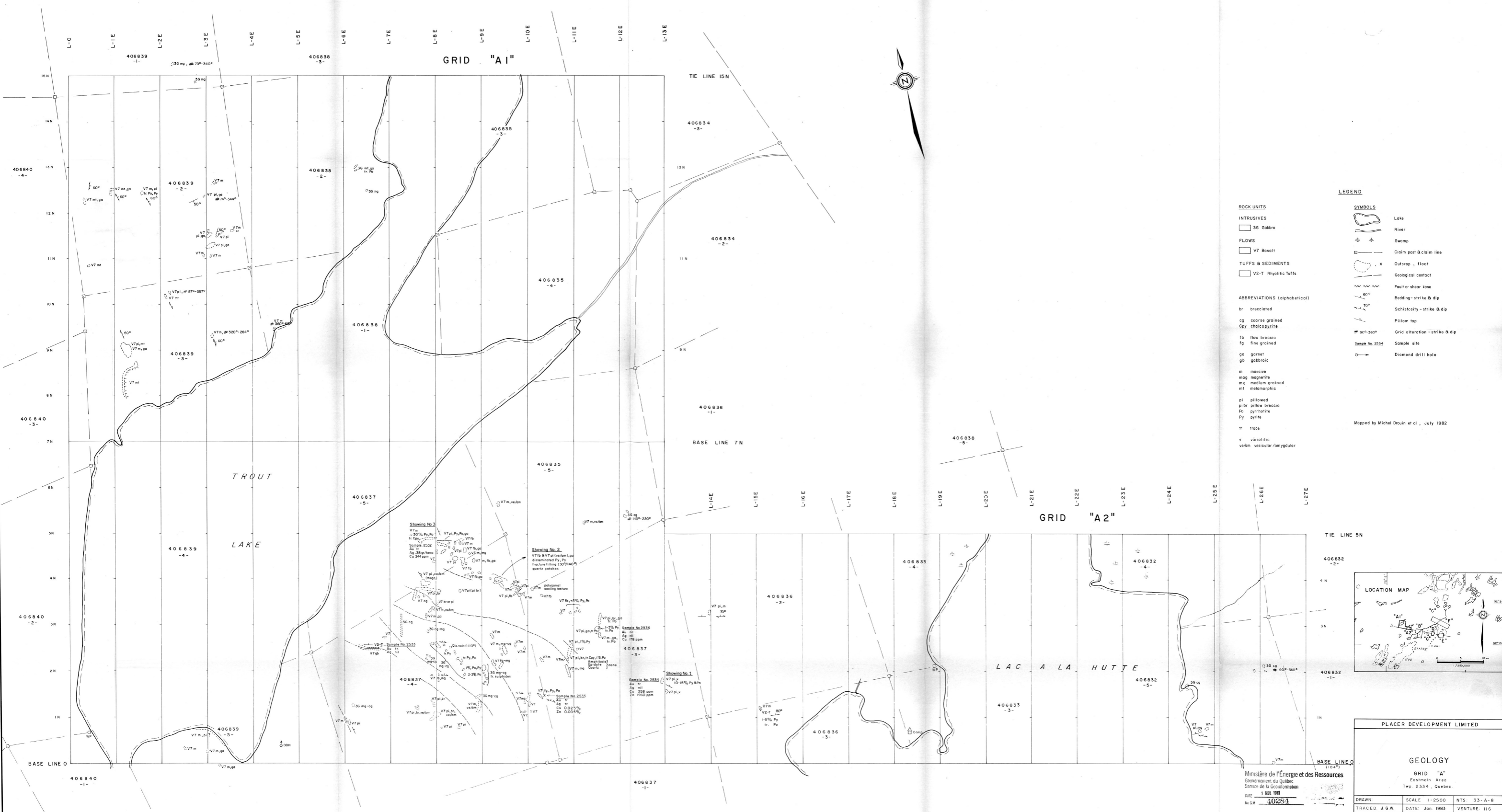
Ministère de l'Énergie et des Ressources
 Gouvernement du Québec
 Service de la Géométrie

DATE 1 NOV. 1983
 No. G.M. 40284

PLACER DEVELOPMENT LIMITED
 V 116 EASTMAIN PROPERTY
 QUEBEC

SCALE : 1 : 50,000

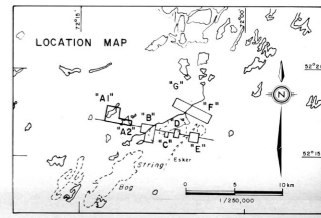
NTS 33-A-8 & 23-D-5 October, 1982
 Revised Jan. 1983



LEGEND

- | | |
|-------------------------------------|--------------------------------|
| ROCK UNITS | SYMBOLS |
| INTRUSIVES | Lake |
| 3G Gabbro | River |
| FLAWS | Swamp |
| V7 Basalt | Claim post & claim line |
| TUFFS & SEDIMENTS | Outcrop, floor |
| V2-T Rhyolitic Tuffs | Geological contact |
| ABBREVIATIONS (alphabetical) | Fault or shear zone |
| br brecciated | Bedding - strike & dip |
| cg coarse grained | Schistosity - strike & dip |
| Cpy chalcopyrite | Pitlow top |
| fb flow breccia | Grid alteration - strike & dip |
| fg fine grained | Sample site |
| go garnet | Diamond drill hole |
| gb gabbroic | |
| m massive | |
| mag magnetite | |
| mg medium grained | |
| mt metamorphic | |
| pi pitlowed | |
| plbr pitlow breccia | |
| Py pyrrhotite | |
| Py pyrite | |
| tr trace | |
| v variolitic | |
| ve/am vesicular/amygdalar | |

Mapped by Michel Drouin et al., July 1982



PLACER DEVELOPMENT LIMITED

GEOLOGY

GRID "A"
Estmain Area
Twp 2334, Quebec.

DRAWN	SCALE 1:2500	NTS 33-A-8
TRACED J.G.W.	DATE Jan 1983	VENTURE 116
APPROVED		Dwg No 116-62

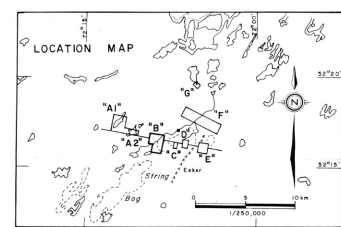
Ministère de l'Énergie et des Ressources
Gouvernement du Québec
Service de la Géoinformation
1 NOV 1983
No. G.M. 10281



- ROCK UNITS**
- 3G Gabbro
 - V7 Basalt
- ABBREVIATIONS (alphabetical)**
- fg fine grained
 - K potassium
 - m massive
 - mag magnetite
 - mg medium grained
 - Po pyrrhotite
 - Py pyrite
 - tr trace

- SYMBOLS**
- Lake
 - River
 - String bog
 - Swamp
 - Claim post & claimline
 - Outcrop
 - Schistosity - strike and dip
 - Sample site

Mapped by Jean Giroux, July 1982



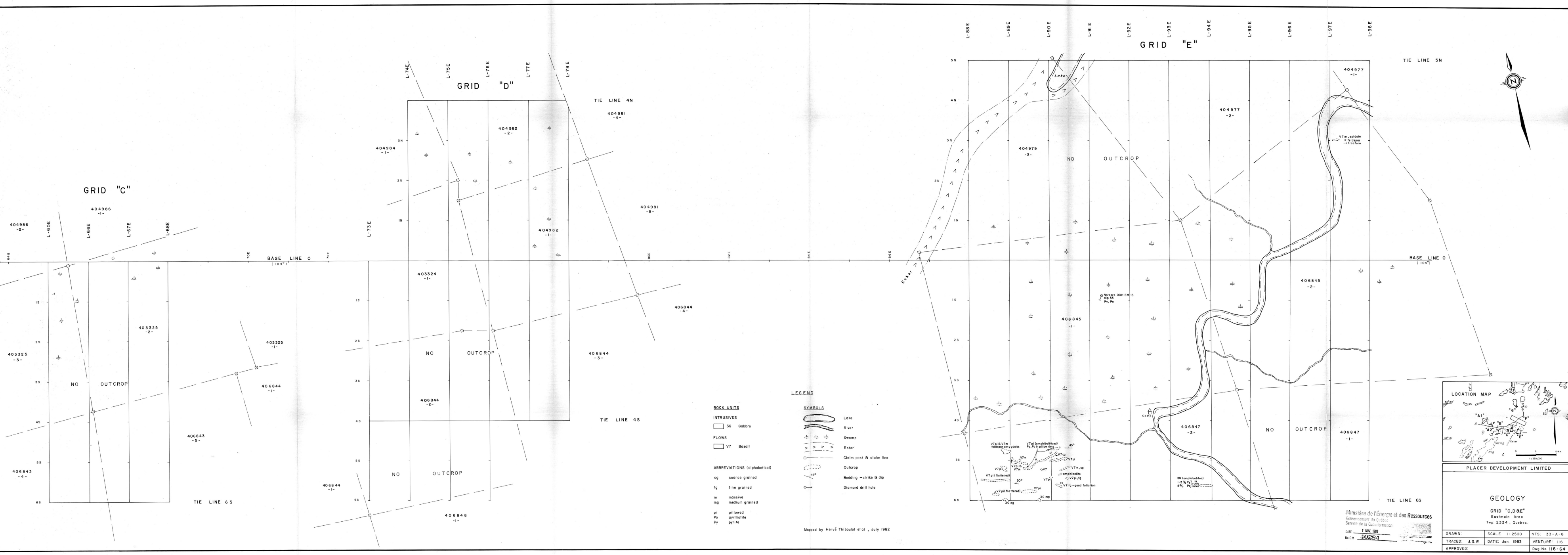
PLACER DEVELOPMENT LIMITED

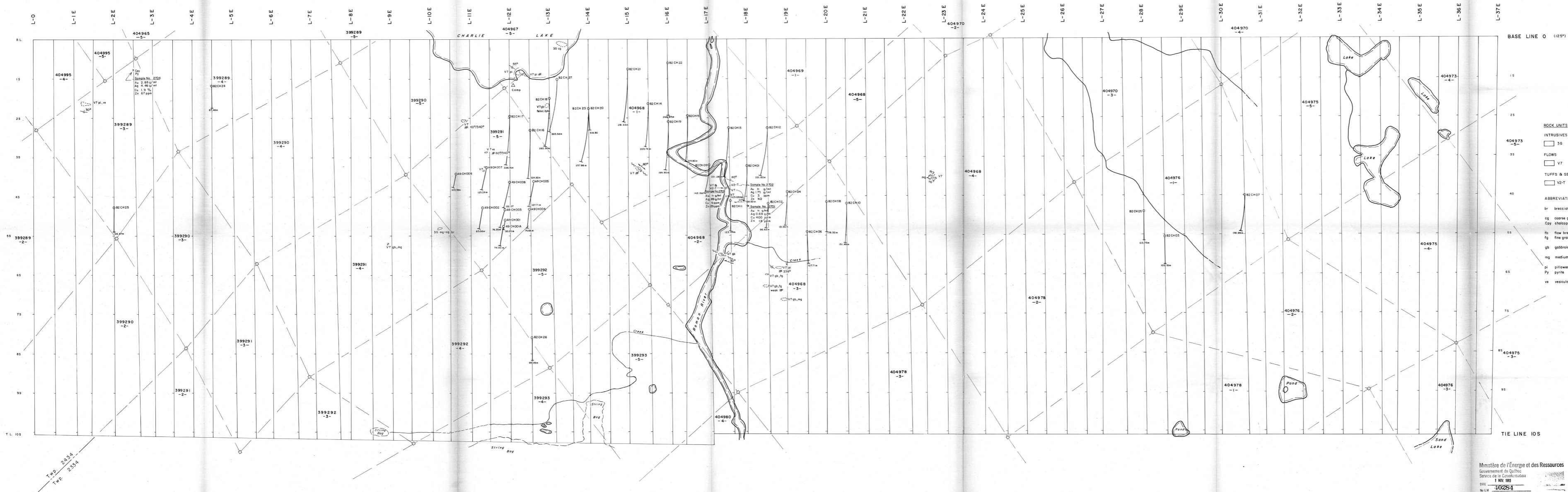
GEOLOGY

GRID "B"
Estmain Area
Twp 2334, Quebec.

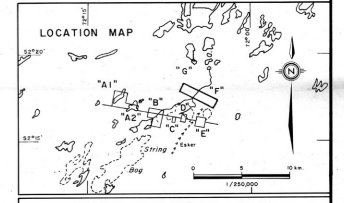
DRAWN:	SCALE 1:2500	NTS 33-A-8
TRACED J.G.W.	DATE Jan 1983	VENTURE 116
APPROVED:		Dwg No 116-63

Ministère de l'Énergie et des Ressources
Gouvernement du Québec
Service de la Géomatrication
DATE 1 NOV 1983
No. GM 40284





- LEGEND**
- ROCK UNITS**
- INTRUSIVES
 - 36 Gabbro
 - FLAWS
 - V7 Basalt
 - V2-T Rhyolitic Tuffs
 - TUFFS & SEDIMENTS
- ABBREVIATIONS (alphabetical)**
- br brecciated
 - cg coarse grained
 - Cpy chalcopyrite
 - fb flow breccia
 - fg fine grained
 - gb gabbroic
 - mg medium grained
 - pi pillowed
 - Py pyrite
 - ve vesicular
- SYMBOLS**
- Lake
 - River
 - String bag
 - Claim post & claim line
 - Outcrop, float
 - Shear zone
 - Bedding - strike & dip
 - Schistosity - strike & dip
 - Pillow top - strike & dip
 - Grid alteration
 - Sample site
 - Diamond drill hole (vertical projection to surface)



PLACER DEVELOPMENT LIMITED

GEOLOGY and LOCATION of DIAMOND DRILL HOLES

GRID "F"
Estimain Area
Twp 2334 2434, Quebec.

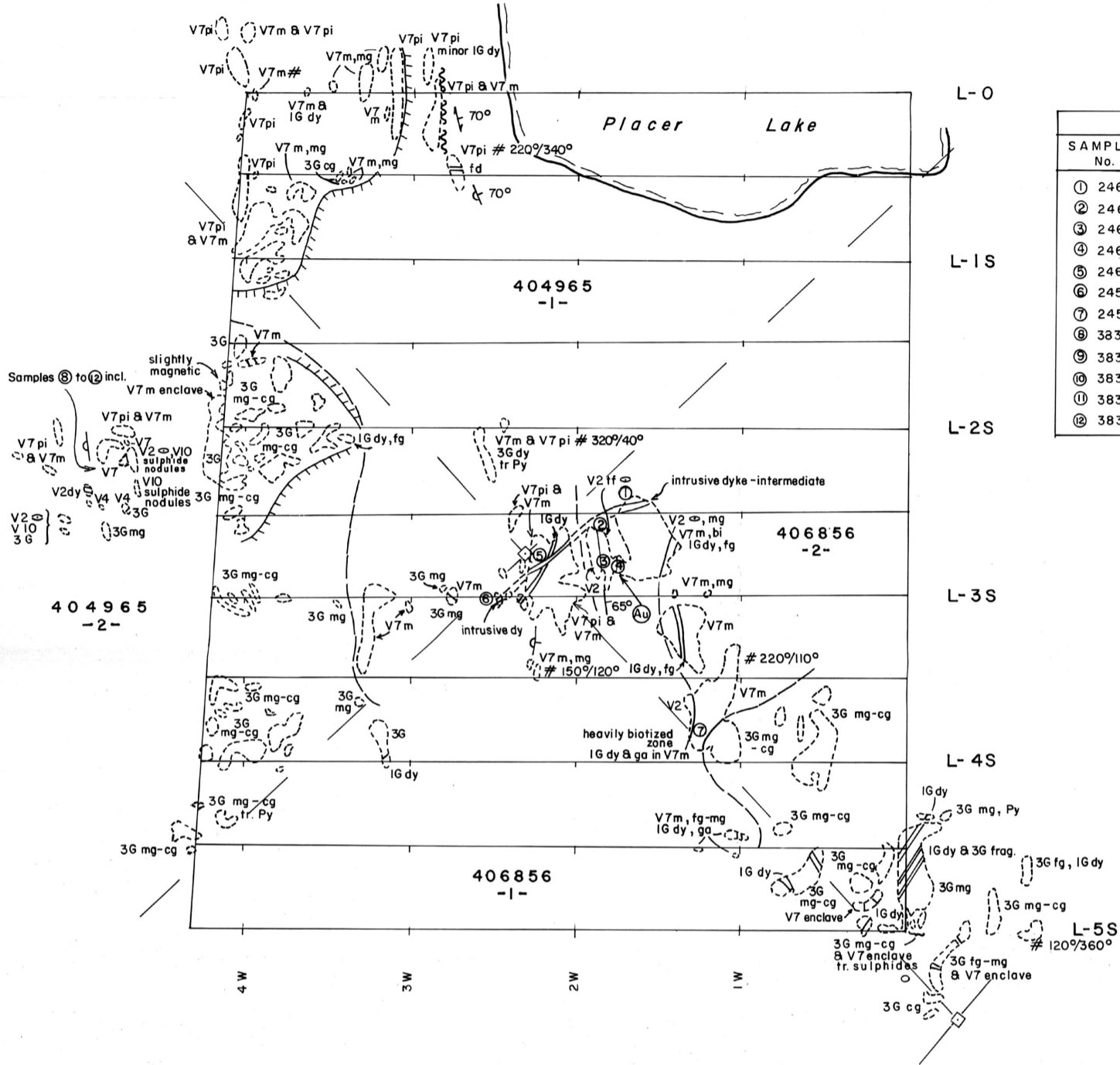
DRAWN:	SCALE: 1:2500	NTS: 33-A-8
TRACED: J.G.W.	DATE: Jan. 1983	VENTURE: 116
APPROVED:		Dwg No. 116-32

Ministère de l'Énergie et des Ressources
Gouvernement du Québec
Service de la Construction
1 NOV 1983
DME
No. E.M. 40284

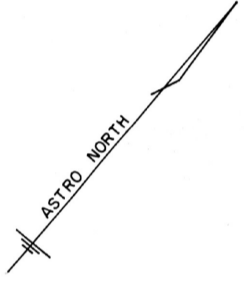
Twp. 2434
Twp. 2334

TIE LINE 4W

BASE LINE 0
(140°)



ASSAY RESULTS				
SAMPLE No.	Au g/mt	Ag g/mt	Cu ppm	Zn ppm
① 2461	tr.	tr.	1480	1280
② 2462	0.40	1.37	5070	3540
③ 2464	tr.	2.37	2160	64
④ 2463	8.26	7.30	27,200	106
⑤ 2460	tr.	nil	18	22
⑥ 2459	tr.	tr.	380	18
⑦ 2458	tr.	nil	600	-
⑧ 3830	tr.	2.47	392	4000
⑨ 3831	tr.	1.58	440	-
⑩ 3832	tr.	2.06	1440	-
⑪ 3833	0.45	2.16	1940	-
⑫ 3834	tr.	0.62	180	-



LEGEND

ROCK UNITS

INTRUSIVES

- IG Granite
- 3G Gabbro

FLOWS

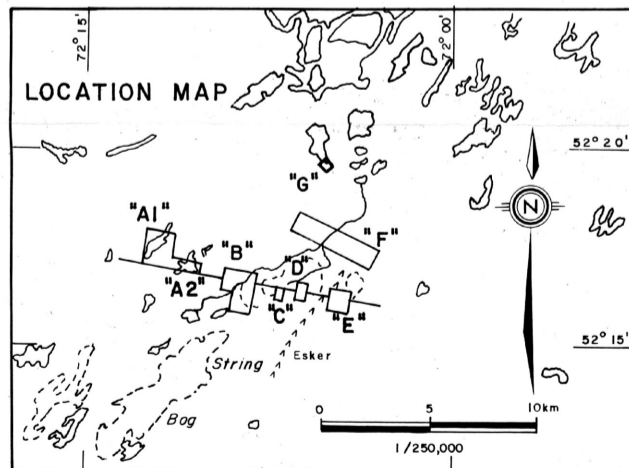
- V2 Rhyolite/rhyodacite
- V4 Dacite
- V7 Basalt
- VIO Felsic agglomerate

ABBREVIATIONS (alphabetical)

- | | |
|-------------------|-------------------|
| bi biotite | m massive |
| cg coarse grained | mag magnetite |
| dy dyke | mg medium grained |
| fd feeder dyke | p porphyritic |
| fg fine grained | pi pillowed |
| ga garnet | Po pyrrhotite |
| gb gabbroic | Py pyrite |
| | tf tuffaceous |
| | tr trace |

SYMBOLS

- Lake
- Claim post & line
- Higher ground
- Outcrop
- Geological contact
- Fault or shear zone
- Bedding - strike & dip
- Schistosity - strike & dip
- Pillow top - strike & dip
- Grid alteration - strike & dip
- Sample site
- Diamond drill hole
- Quartz eyes



Ministère de l'Énergie et des Ressources
Gouvernement du Québec
Service de la Géoinformation

DATE 1 NOV. 1983
No G.M. 40284

PLACER DEVELOPMENT LIMITED

GEOLOGY

GRID "G"

Eastmain Area
TWP, 2434, Quebec

Mapped by Michel Drouin et al, August 1982

DRAWN:	SCALE: 1:2500	NTS: 33-A-8
TRACED: J.G.W.	DATE: Jan. 1983	VENTURE: 116
APPROVED:		Dwg. No. 116-65