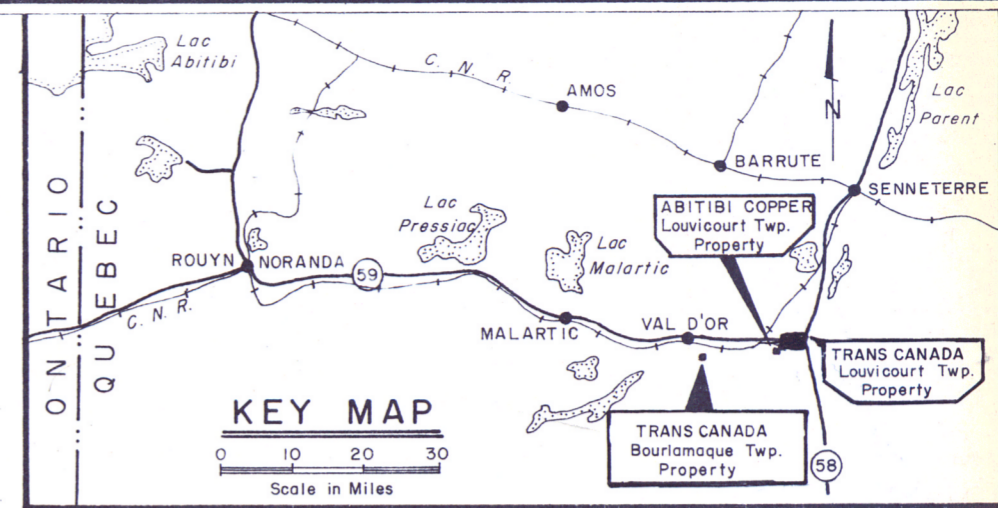


ADDITIONAL DELINEATION DRILLING - SOUTH ZONE
COMPLETED JULY 10 to DECEMBER 7, 1973

HOLE No.	LOCATION	BEARING	DIP	Collar	Bottom	LENGTH feet
T-30	12+00W 10+61S.	South	-80°	-80°20'	300	
T-31	11+50W. 10+61S.	"	-80°	-76°10'	350	
T-32	11+75W. 10+61S.	"	-80°	-78°45'	300	
T-33	11+25W. 10+61S.	"	-80°	-75°00'	350	
T-34	11+00W. 10+80S.	"	-80°	-77°00'	350	
T-35	10+75W. 10+75S.	"	-80°	-73°30'	352	
T-36	11+25W. 10+36S.	"	-80°	-69°40'	350	
T-37	11+75W. 12+35S.	North	-60°	-49°30'	400	
T-38	11+25W. 12+45S.	"	-60°	-50°30'	350	
T-39	11+50W. 12+50S.	"	57°	49°00'	348	
T-40	12+25W. 12+00S.	"	-65°	-53°00'	350	
T-41	11+00W. 12+80S.	"	-60°	-51°25'	350	



LEGEND

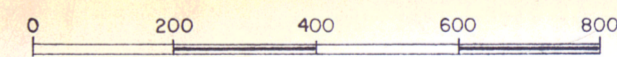
- PRECAMBRIAN INTRUSIVES**
- 4 - Granite, syenite, gneisses
 - 3 - Diorite, diorite porphyry
- EARLY PRECAMBRIAN SEDIMENTS & VOLCANICS**
- 2 - Sediments: arkose, greywacke, conglomerate
 - 1 - Volcanics: rhyolite, dacite, trachyte, andesite, basalt, tuff, agglomerate & breccia

SYMBOLS

- - - Property boundary
- - - Claim line
- 294573 CI-1 - Claim number
- ~ Riv. Bourlamaque - Shoreline of river
- Geological contact
- Fault
- B-4 - Diamond drill hole drilled in 1969
- S-3 - Diamond drill hole drilled 1931-1964
- Area of estimated tons and grade

REFERENCES

1. GEOLOGICAL SKETCH, 400' = 1", ORENADA MINES LTD.
2. PLAN OF SURVEY, 10 chains = 1", DUMONT NICKEL CORP. LTD. JULY 10, 1969
3. MAGNETOMETER SURVEY 200' = 1", DUMONT NICKEL CORP. LTD. SEPT, 1969
4. DRILL SECTIONS: 10+75; 11+50; 12+00; 12+50, 20' = 1", DUMONT NICKEL CORP. LTD., OCT, 1969
5. DRILL CORE LOGS, G.H. DUMONT, CONS. ENG. 1969-73.
6. FIELD NOTES, A.S. BAYNE, JAN. 1970; SEPT. 1979.
7. DRILL SECTIONS - DUMONT NICKEL CORP.'N, 1969. REVISED MAY 1976 & OCT. 1979.
8. PLANS TO 350' LEVEL, MAY 1976, REVISED OCT. 1979



Ministère de l'Énergie et des Ressources
Gouvernement du Québec
Documentation Technique

PLAN

DATE: 18 FEB. 1981
No. G.M.: 36781

GOLD COPPER MINING PROPERTY

- HELD BY -

TRANS CANADA COPPER MINES LTD.

- OUTLINING -

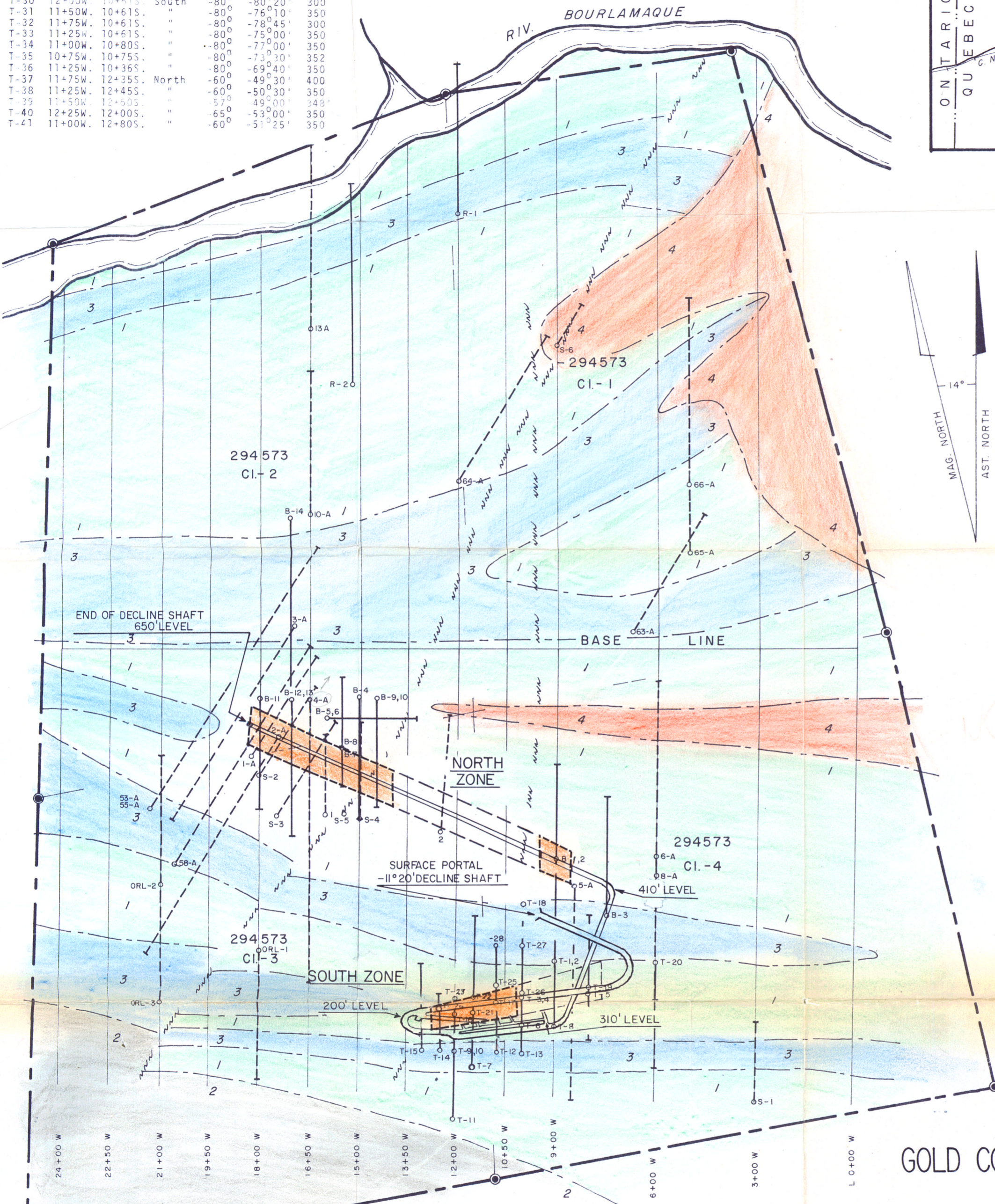
PROPOSED PRE-PRODUCTION MINE DEVELOPMENT

TOWNSHIP OF BOURLAMAQUE — COUNTY OF ABITIBI EAST

PROVINCE OF QUEBEC, CANADA

TORONTO, CANADA
FEBRUARY 16, 1970
REVISED: FEB. 20, 1970, OCT. 17, 1979

A.S. BAYNE & COMPANY
CONSULTING ENGINEERS



REVISIONS

1. Feb. 20, 1970 Add D.D. Holes plotted thus: ○ - - -
2. Locate areas within which tons and grade of North and South zones estimated per Vertical Drill Sections.
3. Proposed shaft portal location
4. Oct. 17, 1979 Note locations D.D. Holes T-30 to T-41 (not plotted)
5. Add plan of proposed mine development.



MINES D'OR ET DE CUIVRE MID CANADA LTEE CANTON DE BOURLAMAQUE VILLE DE VAL D'OR

échelle: 1:500

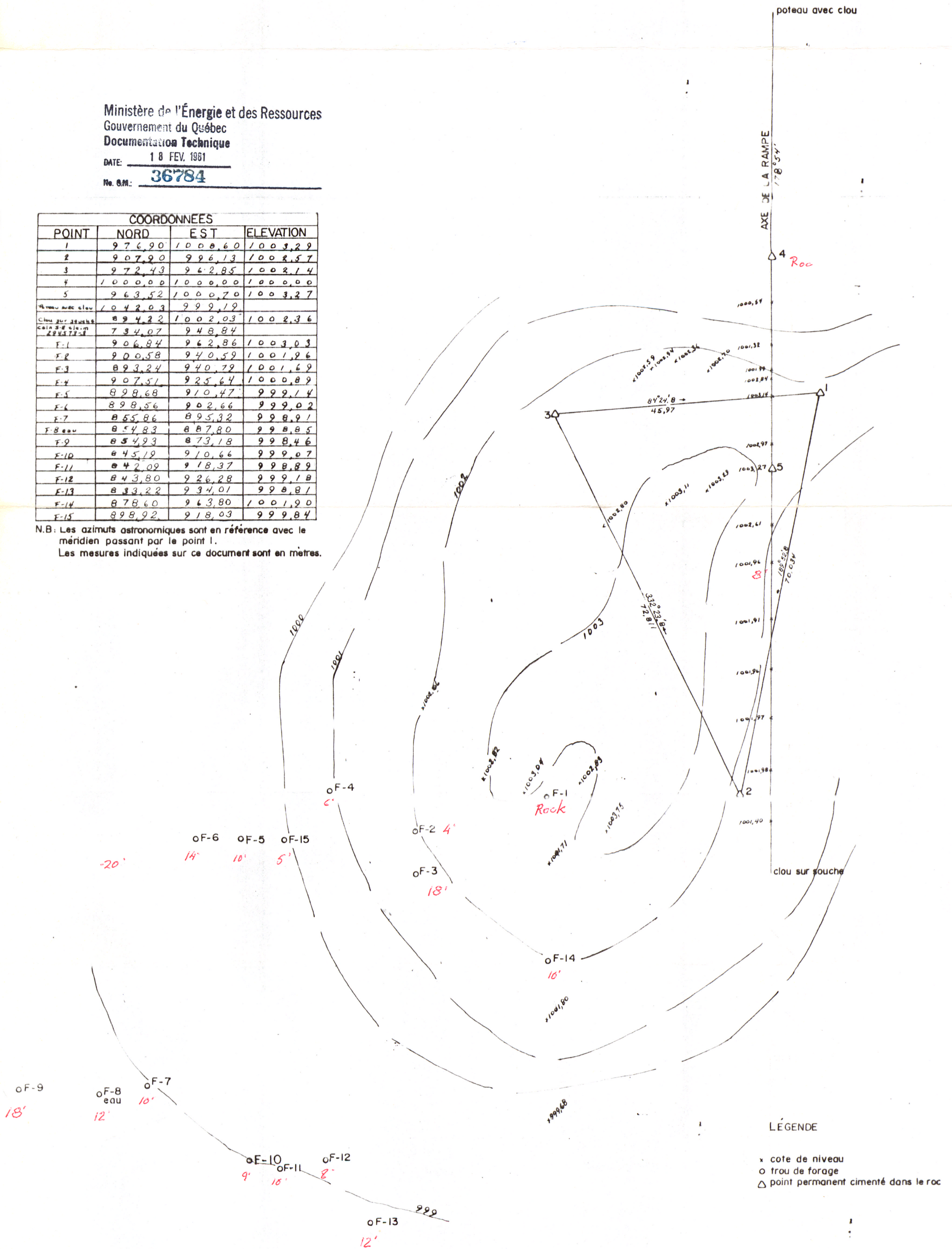
Val d'Or, le 9 juin 1980

par: *Jacques St-Onge*
arpentier-géomètre

Ministère de l'Énergie et des Ressources
Gouvernement du Québec
Documentation Technique
DATE: 18 FEV. 1981
No. S.M.: **36784**

COORDONNÉES			
POINT	NORD	EST	ELEVATION
1	976,90	1008,60	1003,29
2	907,90	996,13	1002,57
3	972,43	962,85	1002,14
4	1000,00	1000,00	1000,00
5	963,52	1000,70	1003,27
Niveau avec clou	1042,03	999,19	
Clou sur assise	894,22	1002,03	1002,36
Clou sur assise	734,07	948,84	
F-1	906,84	962,86	1003,03
F-2	900,58	940,59	1001,26
F-3	893,24	940,79	1001,69
F-4	907,51	925,64	1000,89
F-5	898,68	910,47	999,14
F-6	898,56	902,66	999,02
F-7	855,86	895,32	998,91
F-8 eau	854,83	887,80	998,85
F-9	854,23	873,18	998,46
F-10	845,19	910,66	999,07
F-11	842,02	918,37	998,89
F-12	843,80	926,28	999,18
F-13	833,22	934,01	998,81
F-14	878,60	963,80	1001,20
F-15	898,92	918,03	999,84

N.B: Les azimuts astronomiques sont en référence avec le méridien passant par le point 1.
Les mesures indiquées sur ce document sont en mètres.



LÉGENDE

- x cote de niveau
- o trou de forage
- △ point permanent cimenté dans le roc

10' Epaisseur du mort terrain en pieds

SURFACE

134005

100'

100'

200'

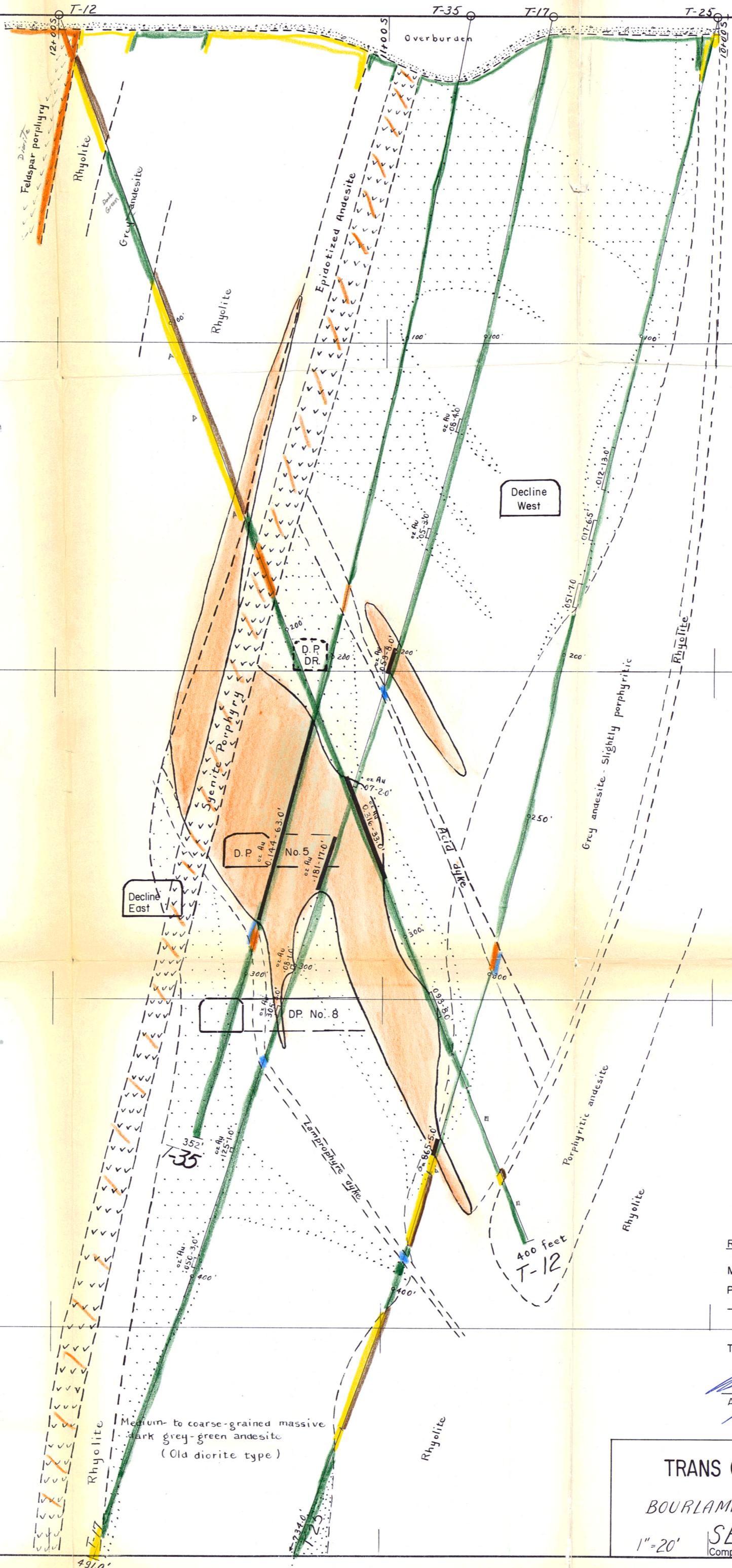
200'

300'

300'

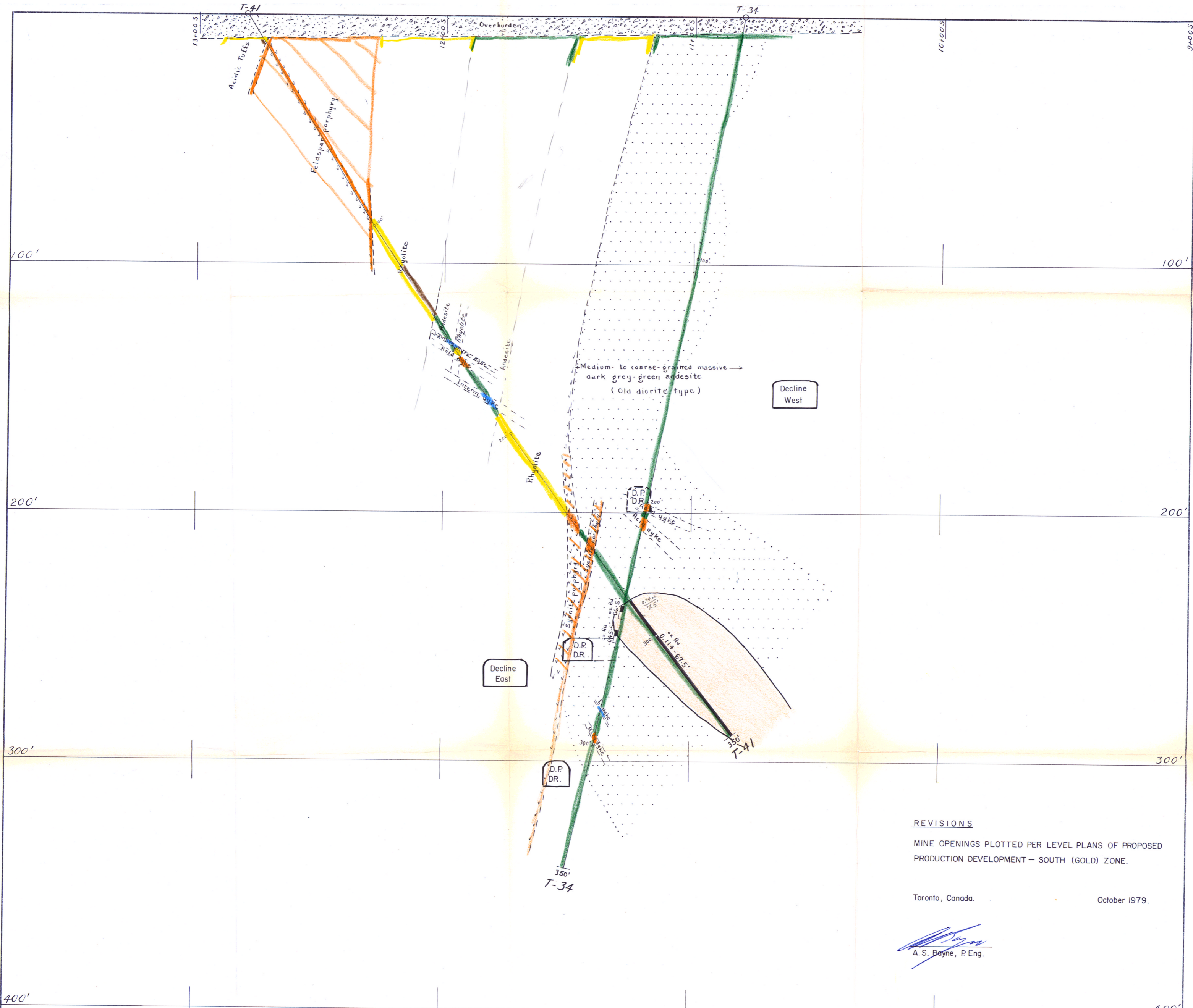
400'

400'



Toronto, Canada. October 1979
 Ministère de l'Énergie et des Ressources
 Gouvernement du Québec
 Documentation Technique
 A. S. Bayne, P. Eng.
 DATE: 10 FEB 1981
 No. G.M.: 36784

TRANS CANADA COPPER MINES LTD.
 BOURLAMAQUE TWP - ABITIBI - QUEBEC
 SECTION LINE 10 + 75 W
 1" = 20'
 Compiled by G.H. Dumont, Consulting Engineer. May, 1976.



REVISIONS

MINE OPENINGS PLOTTED PER LEVEL PLANS OF PROPOSED PRODUCTION DEVELOPMENT - SOUTH (GOLD) ZONE.

Toronto, Canada.

October 1979.

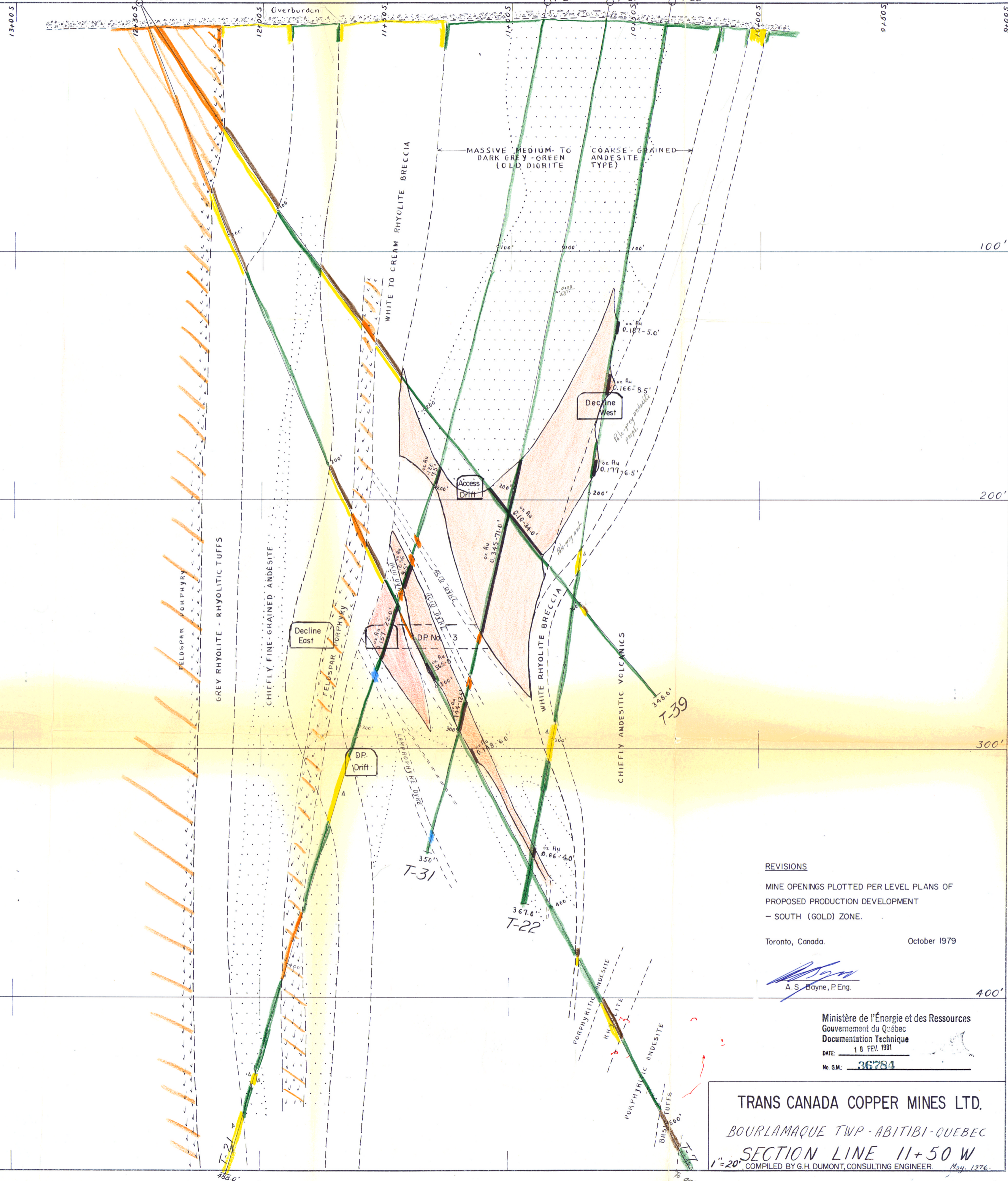
A. S. Bayne
A. S. Bayne, P. Eng.

Ministère de l'Énergie et des Ressources
Gouvernement du Québec
Documentation Technique
DATE: 18 FEV. 1981
No. G.M.: 36784

TRANS CANADA COPPER MINES LTD.
BOURLAMAQUE TWP. - ABITIBI - QUEBEC
SECTION LINE 11+00W
1"=20' COMPILED BY G.H. DUMONT, CONSULTING ENGINEER
MAY, 1976.

SURFACE

T-7 T-39 T-21 T-31 T-22



REVISIONS

MINE OPENINGS PLOTTED PER LEVEL PLANS OF PROPOSED PRODUCTION DEVELOPMENT - SOUTH (GOLD) ZONE.

Toronto, Canada. October 1979

A. S. Bayne
A. S. Bayne, P. Eng.

Ministère de l'Énergie et des Ressources
Gouvernement du Québec
Documentation Technique
DATE: 18 FEV. 1981
No. G.M.: 36784

TRANS CANADA COPPER MINES LTD.
BOURLAMAQUE TWP - ABITIBI-QUEBEC
SECTION LINE 11+50 W
1"=20'
COMPILED BY G.H. DUMONT, CONSULTING ENGINEER May 1976.

SURFACE

13+00.5

T-37

12+00.5

11+00.5

T-32

10+00.5

Overburden

100'

100'

200'

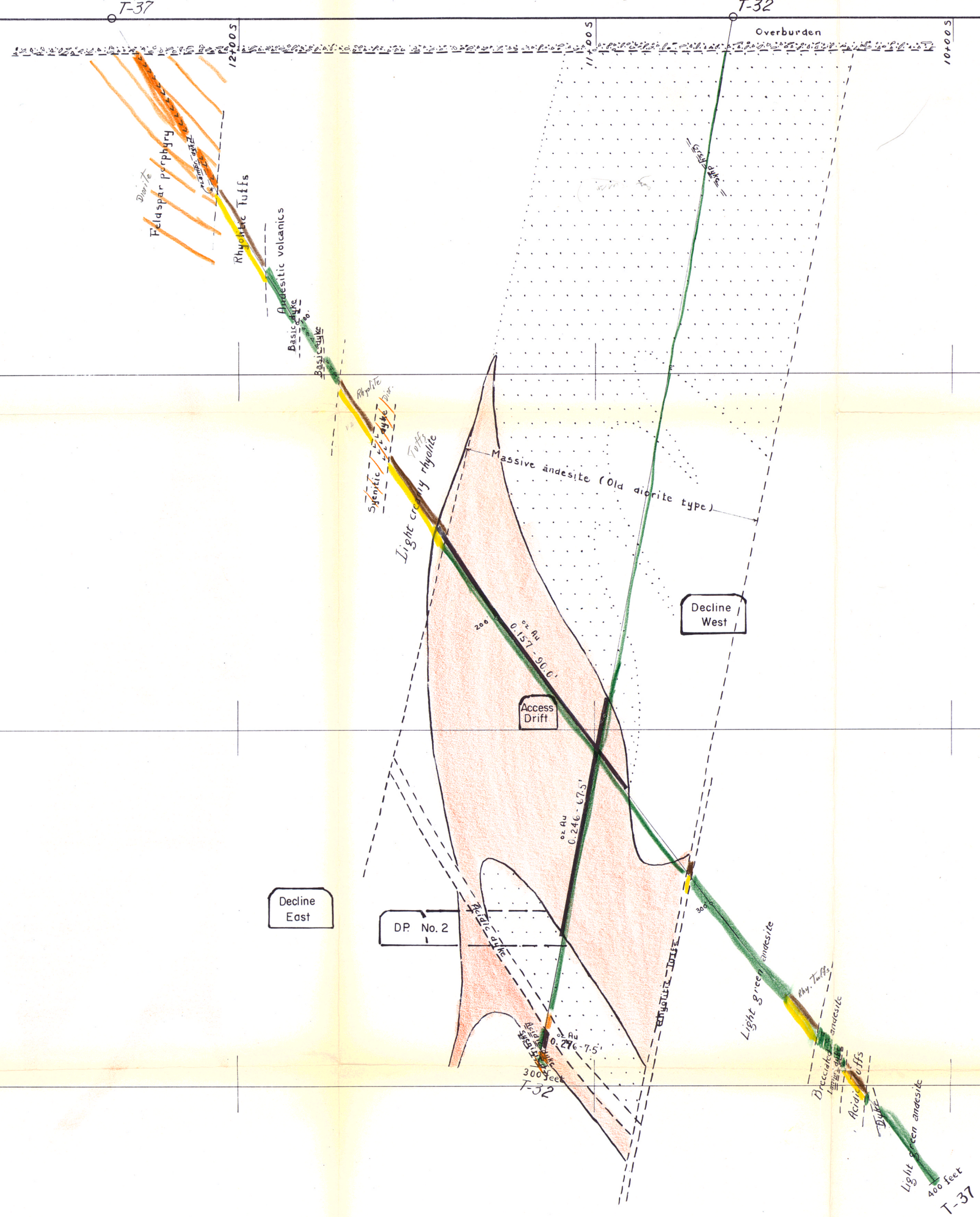
200'

300'

300'

400'

400'



REVISIONS

MINE OPENINGS PLOTTED PER LEVEL PLANS OF PROPOSED PRODUCTION DEVELOPMENT - SOUTH (GOLD) ZONE.

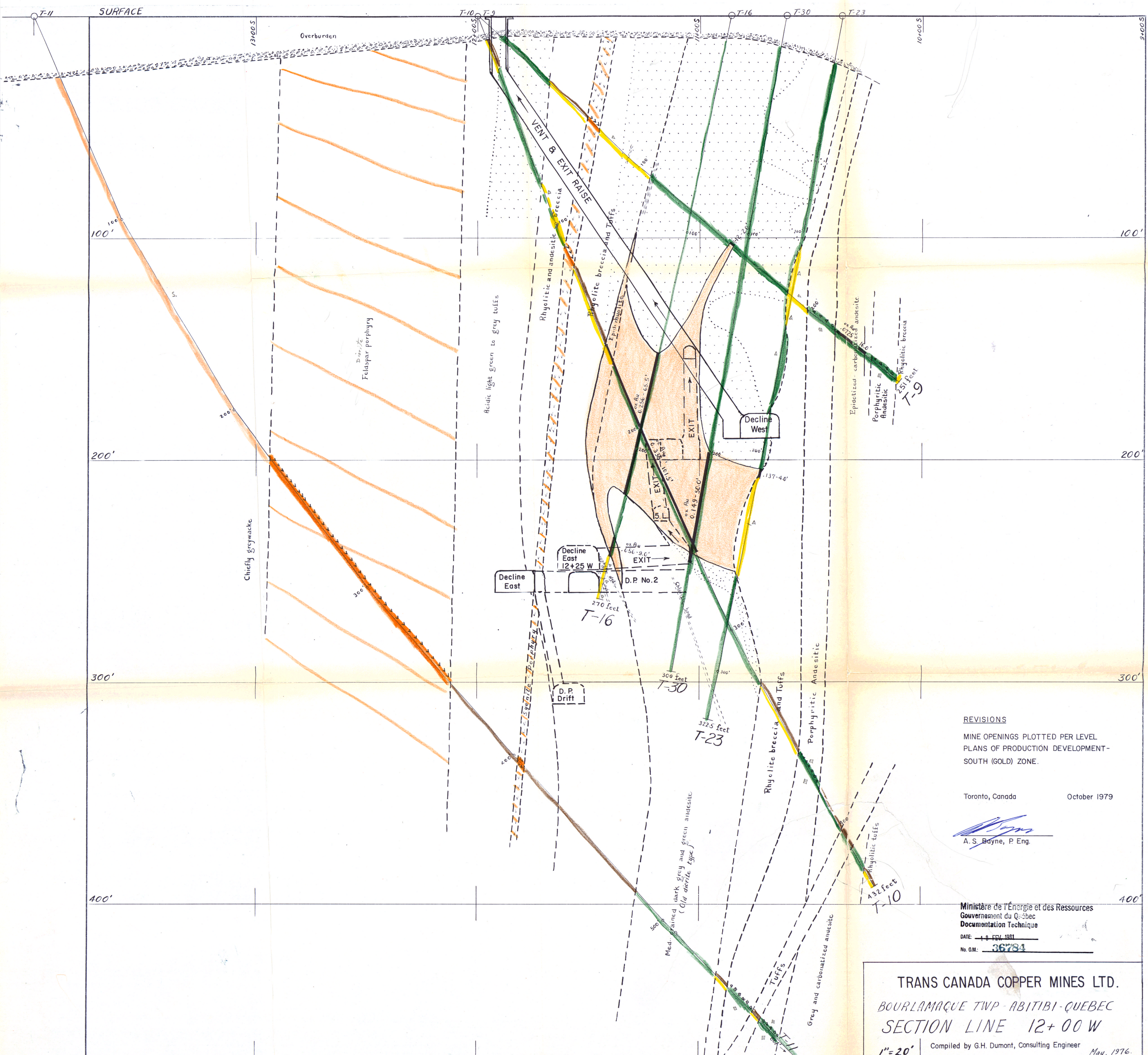
Toronto, Canada

October 1979

A.S. Bayne
A.S. Bayne, P.Eng.

Ministère de l'Énergie et des Ressources
Gouvernement du Québec
Documentation Technique
18 FEB 1981
DATE: _____
No. G.M.: 36784

TRANS CANADA COPPER MINES LTD.
BOURLAMAQUE TWP - ABITIBI - QUEBEC
SECTION LINE 11+75 W
COMPILED BY G.H. DUMONT, CONSULTING ENGINEER
1"=20'
MAY, 1976.



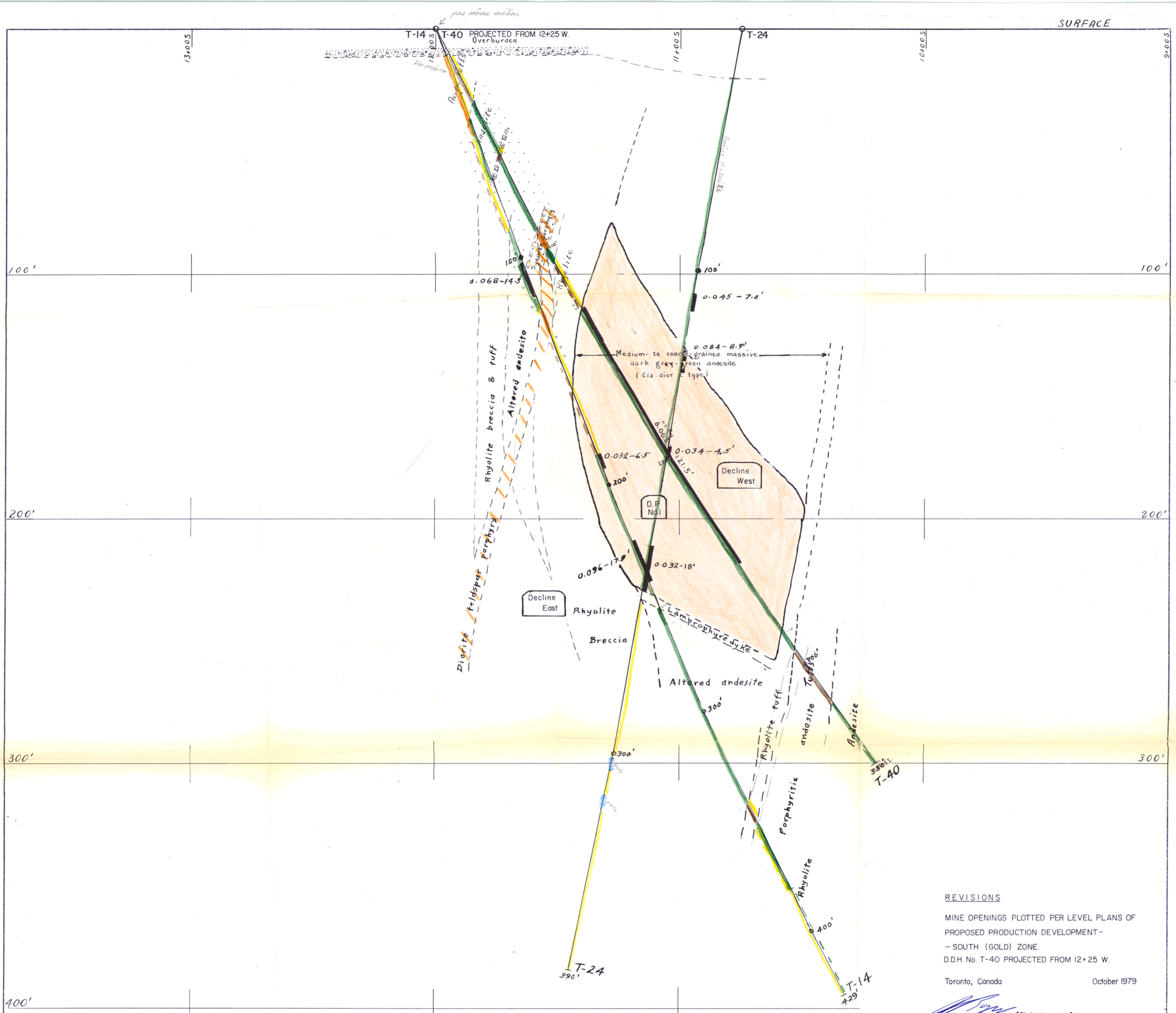
REVISIONS
 MINE OPENINGS PLOTTED PER LEVEL
 PLANS OF PRODUCTION DEVELOPMENT -
 SOUTH (GOLD) ZONE.

Toronto, Canada October 1979

[Signature]
 A. S. Bayne, P. Eng.

Ministère de l'Énergie et des Ressources
 Gouvernement du Québec
 Documentation Technique
 DATE: 10 FEB 1981
 No. G.M.: 36784

TRANS CANADA COPPER MINES LTD.
 BOURLAMAQUE TWP - ABITIBI - QUEBEC
 SECTION LINE 12+00 W
 1" = 20' Compiled by G.H. Dumont, Consulting Engineer May, 1976.



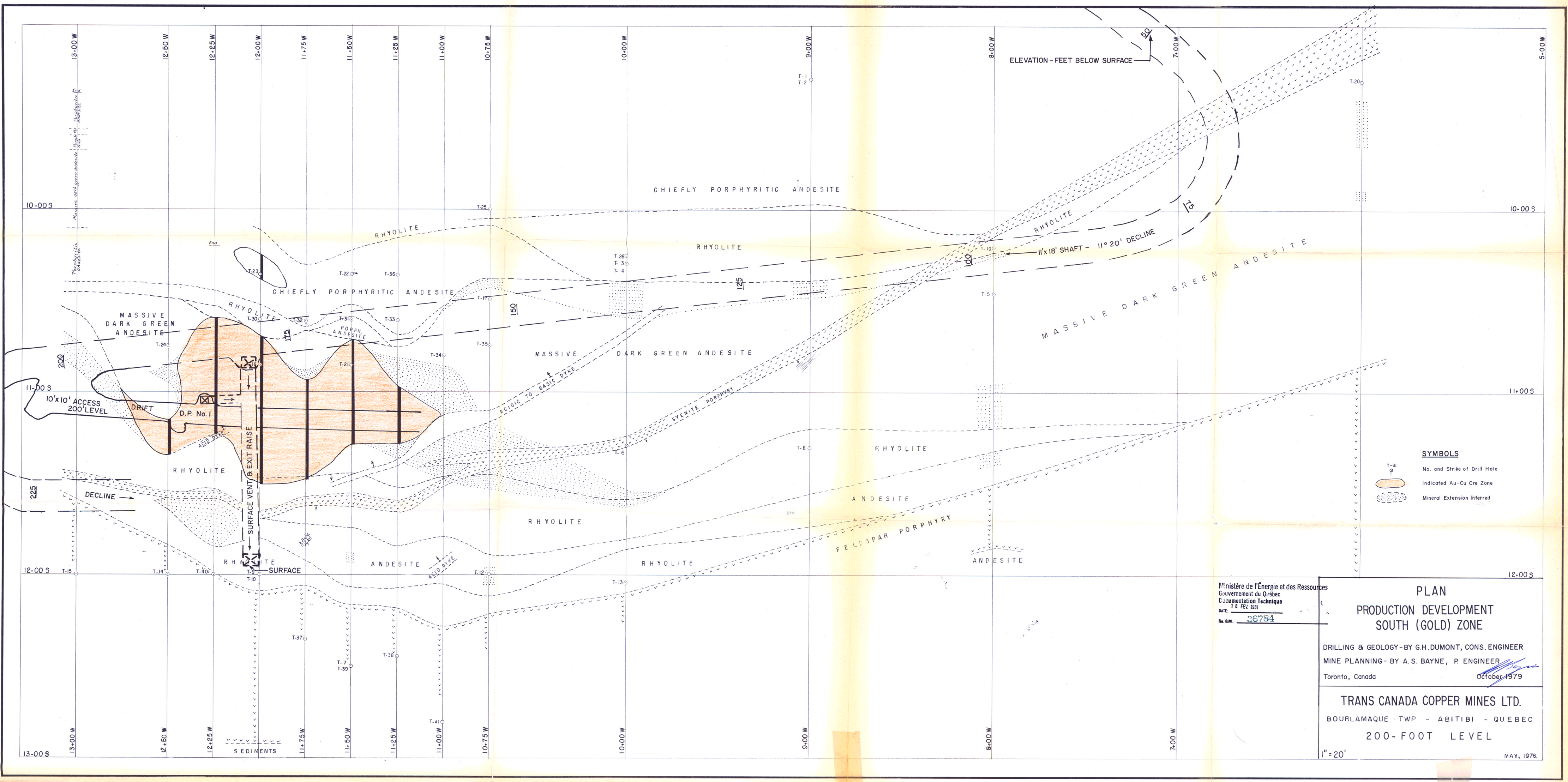
REVISIONS

MINE OPENINGS PLOTTED PER LEVEL PLANS OF PROPOSED PRODUCTION DEVELOPMENT - SOUTH (GOLD) ZONE.
 D.D.H. No. T-40 PROJECTED FROM 12+25 W.

Toronto, Canada October 1979

A.S. Bayne, P. Eng. Ministère de l'Énergie et des Ressources
 Gouvernement du Québec
 Documentation Technique
 DATE: 8 FEB. 1981
 No. G.M.: 36784

TRANS CANADA COPPER MINES LTD.
 BOURLAMAQUE TWP - ABITIBI - QUEBEC
 SECTION LINE 12+50 W
 1"=20' COMPILED BY G.H. DUMONT, CONSULTING ENGINEER - MAY 1976



SYMBOLS

- No. and Strike of Drill Hole
- Indicated Au-Cu Ore Zone
- Mineral Extension Inferred

Ministère de l'Énergie et des Ressources
 Gouvernement du Québec
 Documentation Technique
 DATE: 18 FEV. 1981
 No. Q.M.: 36784

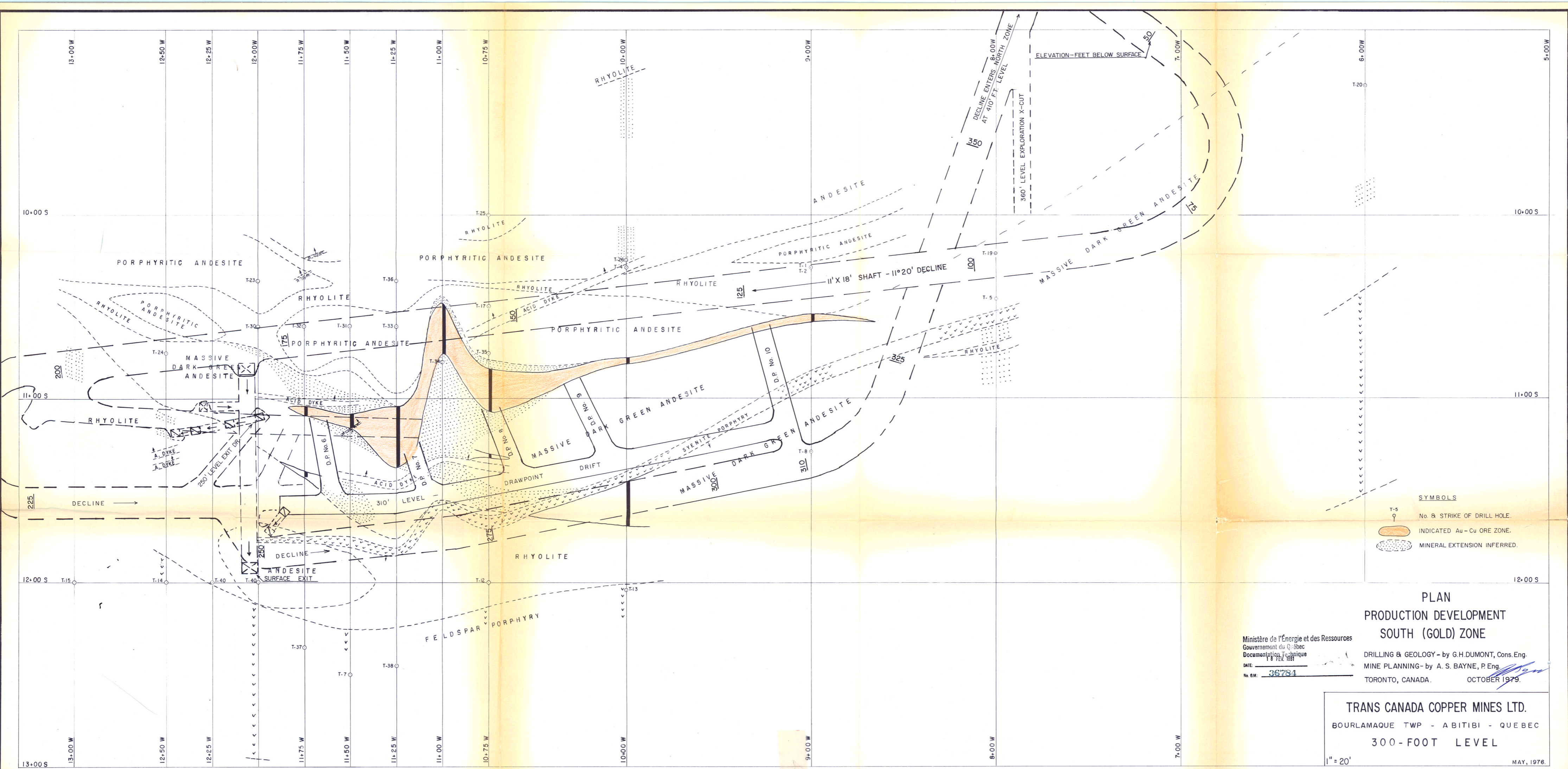
**PLAN
 PRODUCTION DEVELOPMENT
 SOUTH (GOLD) ZONE**

DRILLING & GEOLOGY - BY G.H. DUMONT, CONS. ENGINEER
 MINE PLANNING - BY A.S. BAYNE, P. ENGINEER

Toronto, Canada October 1979

TRANS CANADA COPPER MINES LTD.
 BOURLAMAQUE TWP - ABITIBI - QUEBEC
 200-FOOT LEVEL

1" = 20' MAY, 1976



- SYMBOLS**
- T-5
○ No. & STRIKE OF DRILL HOLE.
 - ▭ INDICATED Au - Cu ORE ZONE.
 - ⋯ MINERAL EXTENSION INFERRED.

**PLAN
PRODUCTION DEVELOPMENT
SOUTH (GOLD) ZONE**

Ministère de l'Énergie et des Ressources
 Gouvernement du Québec
 Documentation Technique
 DATE: 18 FEB 1981
 No. DM. 36781

DRILLING & GEOLOGY - by G. H. DUMONT, Cons. Eng.
 MINE PLANNING - by A. S. BAYNE, P. Eng.

TORONTO, CANADA. OCTOBER 1979.

TRANS CANADA COPPER MINES LTD.
 BOURLAMAQUE TWP - ABITIBI - QUEBEC
 300-FOOT LEVEL
 1" = 20'
 MAY, 1976.

Plus 180' TO WATER L.N.E.

Stock PILE AREA.

FUTURE ROAD TO POWER MACHS

TEMPORARY WATER LINE & POWER CABLE BURIED

NORTH

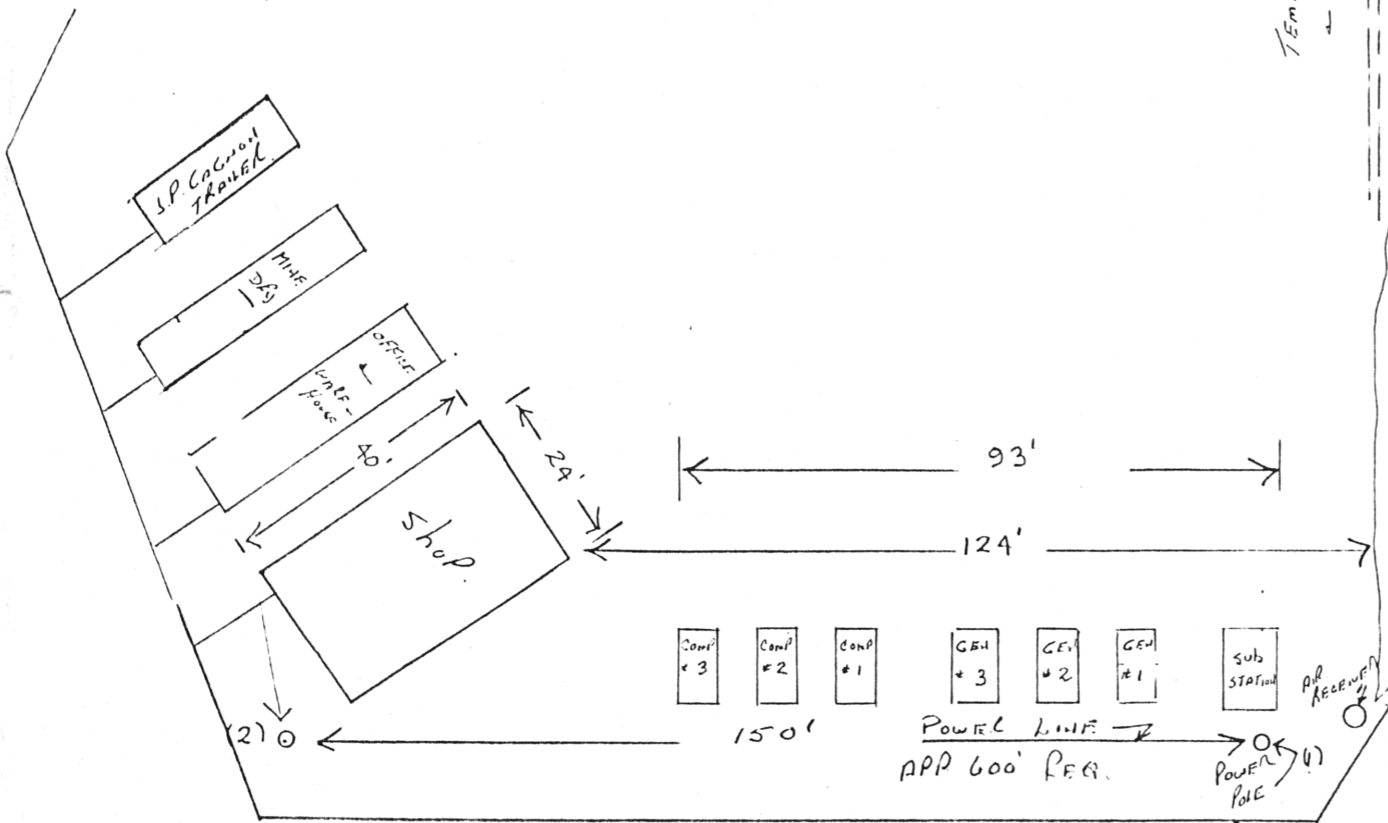
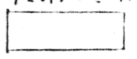
Plus 50' NORTH TO WATER SUPPLY

PROPOSED ROAD

CAR PAVES FILL AREA

PARKING LOT

POSSIBLE LOCATION PUMPING TANK



PORTAL

PROP. HEATING SYSTEM & FAN

Bassin de Sedimentation

Ministère de l'Énergie et des Ressources
Gouvernement du Québec
Documentation Technique

DATE: 18 FEV. 1981

No. P.M.: 36784

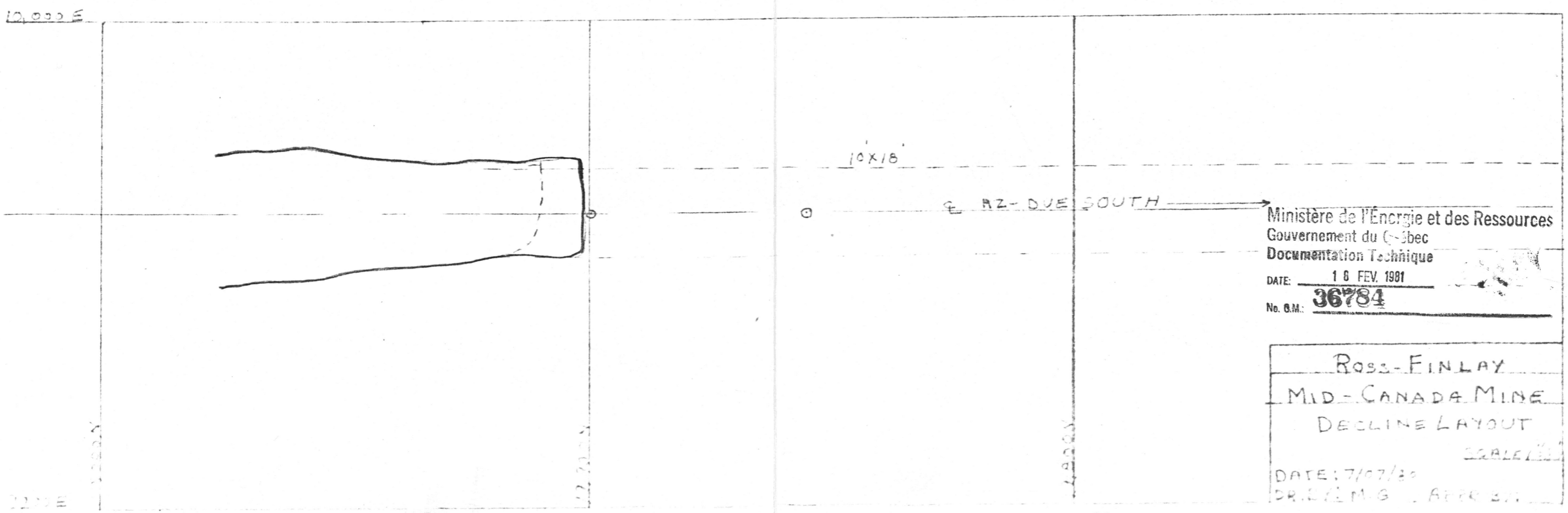
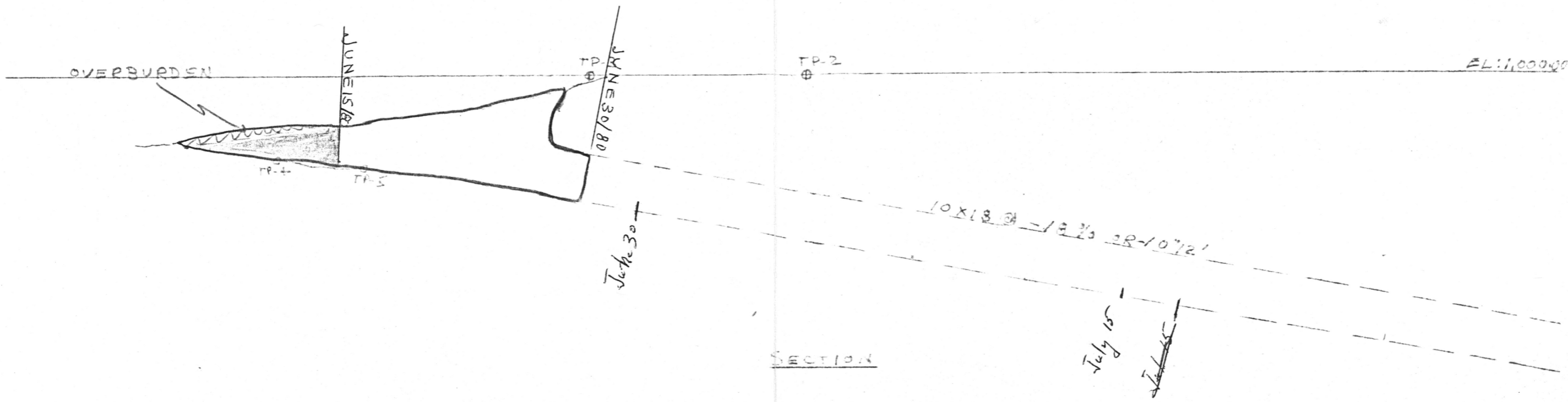
ROSS FINLAY LTD

MID-CANADA SURFACE LOGGING

POSSIBLE FUEL STORAGE

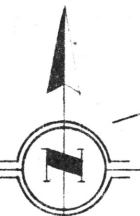
SOUTH

16 mm



Ministère de l'Énergie et des Ressources
 Gouvernement du Québec
 Documentation Technique
 DATE: 18 FEV. 1981
 No. D.M.: **36784**

ROSS-FINLAY
 MID-CANADA MINE
 DECLINE LAYOUT
 SCALE: 1" = 100'
 DATE: 7/07/80
 DR. J. M. G. APPR. BY:



SOQUEM

LOUVICOURT TWP N.-S. Q

NEMROD

PROVINCIAL HIGHWAY No. 59

COPPER SECTION X

SOQUEM

VOLCANICS
GRANODIORITE

WYETH LAKE

NAGANTA MINING

(D)
COPPER DEPOSIT

(A)
BEVCON GOLD MINES SHAFT (2250 ft)

Total production: 14+ millions in gold

(C)
GOLD ZONE

(B)
BUFFADISON SHAFT (983 ft)

TRANS CANADA COPPER MINES LIMITED

CLERO MINES LIMITED

(E)
GOLD ZONE

DIABASE DYKE

GRANODIORITE VOLCANICS

(F)
GOLD ZONE

COPPER DEPOSIT

ABITIBI COPPER MINES LIMITED

MARKED UP TO SHOW LOCATIONS A, B, C, D, E & F

- DESCRIBED IN -

REPORT ON GOLD-COPPER PROPERTIES HELD BY TRANS CANADA COPPER MINES LIMITED
OCTOBER, 1979
A. S. BAYNE, P. ENG.

Ministère de l'Énergie et des Ressources
Gouvernement du Québec
Documentation Technique
DATE: 18 FEB. 1981
No. G.M.: 36784

PLAN SHOWING LOCATION
OF KNOWN MINERAL OCCURRENCES ON PROPERTIES OF
ABITIBI COPPER AND TRANS CANADA COPPER
BOTH SUBSIDIARIES OF

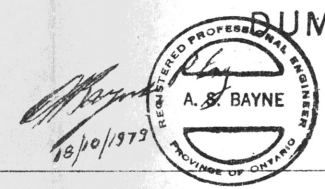
QUEBEC GOLD BELT LTD

DUMONT NICKEL CORPORATION

LOUVICOURT TOWNSHIP

NORTHWESTERN QUEBEC

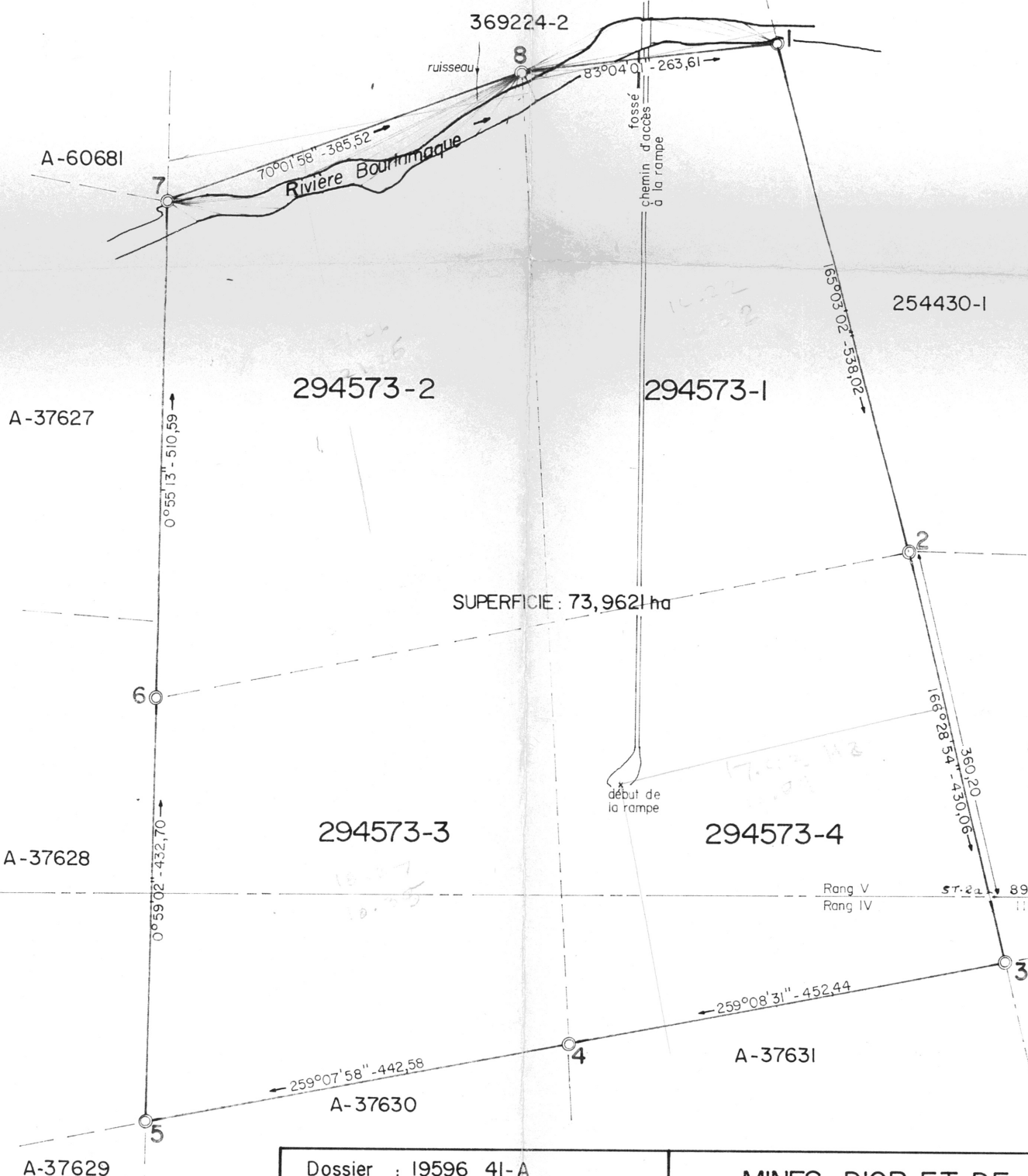
SCALE 1 INCH = 1,000 FEET



LOUVICOURT TWP E.-W. Q

VICOUR SHAFT (500 ft.)
Gold

MARCH, 1970.



SUPERFICIE au Nord de la rivière : 0,8413 ha
 " " SUD " " : 72,0256 ha
 " de la rivière : 1,0952 ha

SUPERFICIE : 73,9621 ha

Ministère de l'Énergie et des Ressources
 Gouvernement du Québec
 Documentation Technique
 DATE: 18 FEV 1981
 No. G.M.: 36784

LÉGENDE

- ⊙ Poteau et borne de fer
- ⬢ Poteau, borne terminus et butte
- Station d'opération

Échelle : 1 : 5 000



N.B. Les mesures indiquées sur ce document sont en mètres (SI)
 Les azimuts astronomiques sont par rapport au méridien du lieu.
 (5) Relativement au méridien de référence du canton, on doit additionner 0°01'30".

Dossier : 19596 4I-A
 sec. 4

Vérfié par: *H. L.* Date: *août 1980*

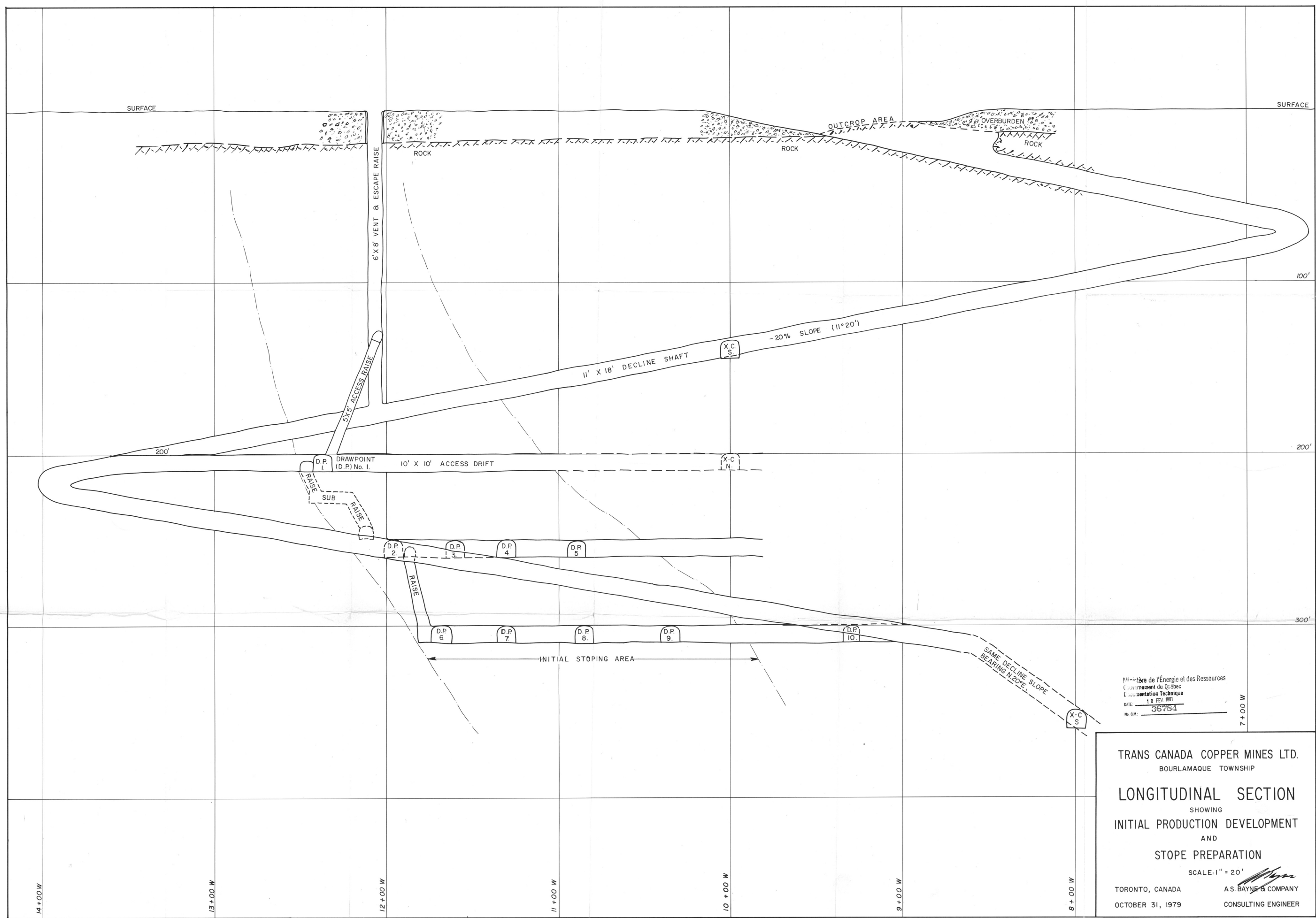
Ministère de l'Énergie et des Ressources
 Direction générale du Domaine territorial
 Original conservé aux archives du
 service de l'Arpentage
 Québec, le *27 Août* 1980

Georges Lanquar
 Directeur

Seul le service de l'Arpentage est autorisé à émettre des copies authentiques de ce document.

MINES D'OR ET DE CUIVRE MID CANADA LTEE.
 Claims 294573-1 à 4
CANTON de BOURLAMAQUE
 (ABITIBI-EST)

Val d'Or, le 2 juillet 1980
 par: *Jacques Sylvestre*
 Jacques Sylvestre arp.-géomètre



Ministère de l'Énergie et des Ressources
 Gouvernement du Québec
 Documentation Technique
 DATE: 18 FEB. 1981
 No. G.M.: 36754

TRANS CANADA COPPER MINES LTD.
 BOURLAMAQUE TOWNSHIP

LONGITUDINAL SECTION
 SHOWING
 INITIAL PRODUCTION DEVELOPMENT
 AND
 STOPE PREPARATION

SCALE: 1" = 20'

TORONTO, CANADA
 OCTOBER 31, 1979

A.S. BAYNE & COMPANY
 CONSULTING ENGINEER