

LEGEND

- QUARTZ FELDSPAR ROBINYEV
OU FELDSPAR PORPHYRE
- GABBRO
- ANDESITE
- FRAGMENTAL ROCK
- CHYOLITE
- MINERALIZATION
- TRENCH
- SEAMING
- PILLOWS
- SHEARING, FAULT

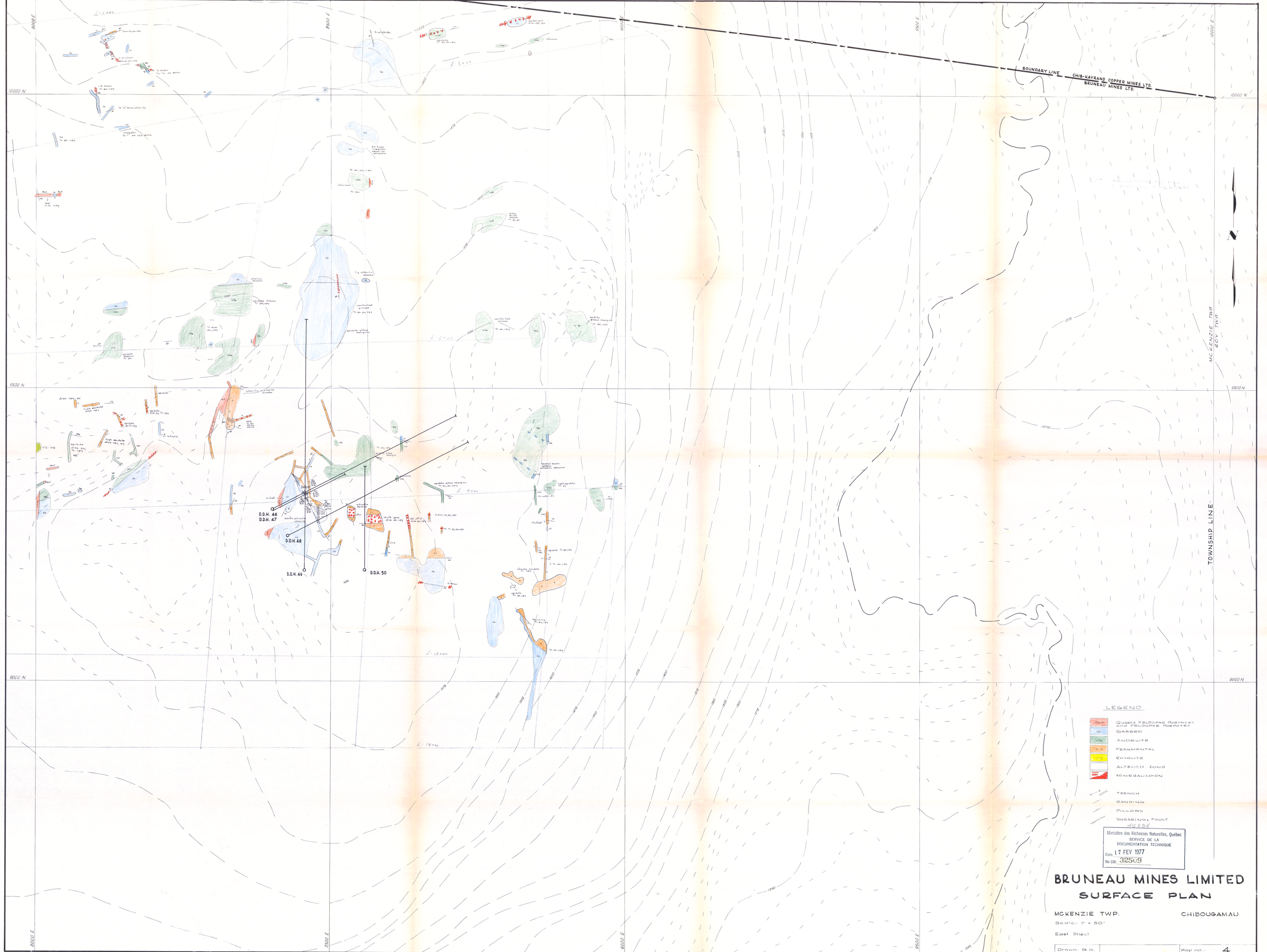
45 X 34
 Ministère des Richesses Naturelles, Québec
 SERVICE DE LA
 DOCUMENTATION TECHNIQUE
 Date: 17 FEV 1977
 no. DM. 32509

BRUNEAU MINES LIMITED
SURFACE PLAN

MCKENZIE TWP. CHIBOUGAMAU

Scale: 1" = 50'
 West Street

Drawn: G.H. Map no: 3



- LEGEND**
- QUARTZ FELDSPAR PORPHYRY AND FELDSPAR PORPHYRY GABRO
 - ANDESITE
 - FRAGMENTAL
 - RHYOLITE
 - ALTERED ZONE
 - MINERALIZATION
 - TRENCH
 - BANDING
 - PILLOWS
 - SHEARING, FAULT

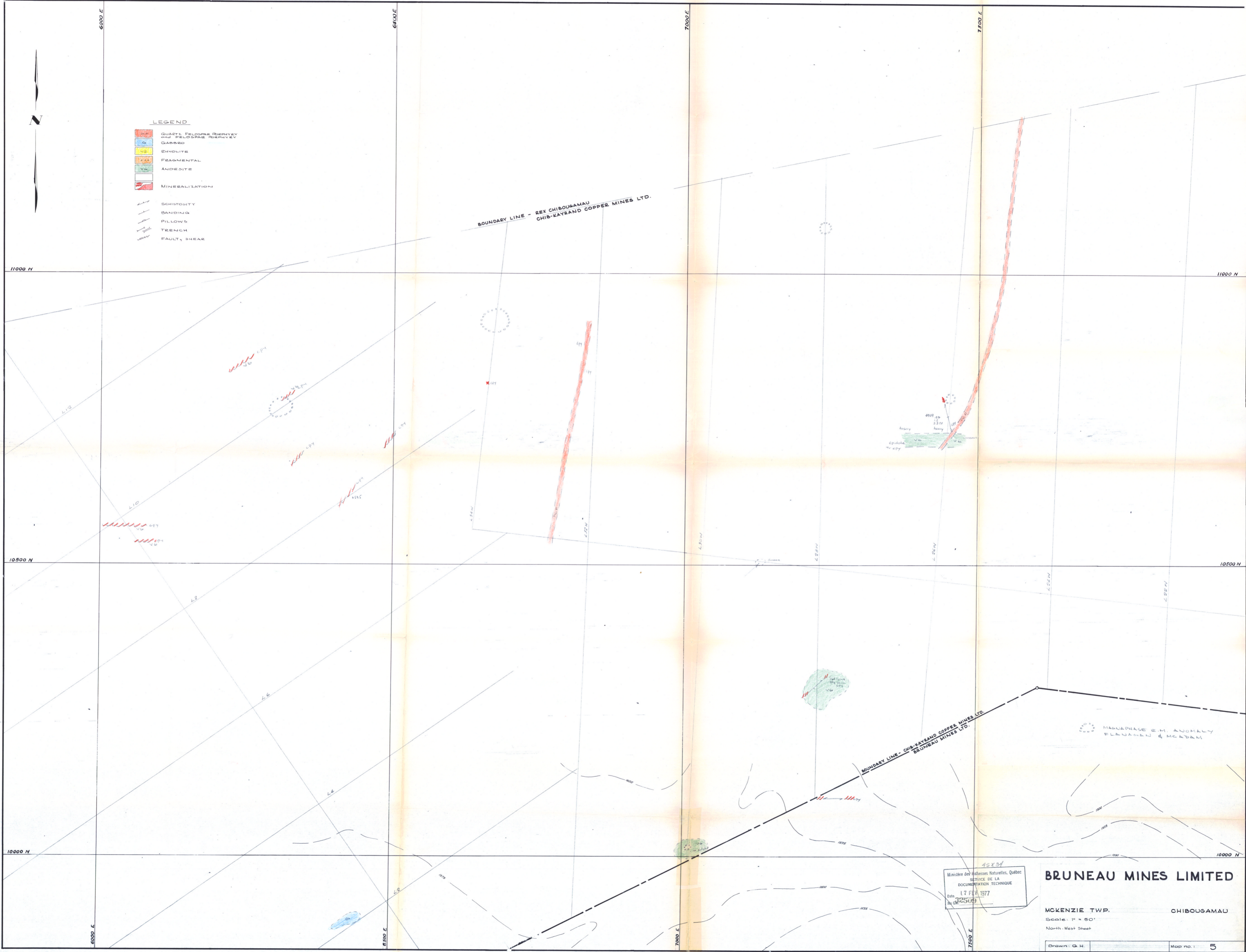
Ministère des Richesses Naturelles, Québec
 SERVICE DE LA DOCUMENTATION TECHNIQUE
 Date: 17 FEV 1977
 No GM: 32509

**BRUNEAU MINES LIMITED
 SURFACE PLAN**

MCKENZIE TWP. CHIBOUGAMAU
 Scale: 1" = 50'
 East Sheet
 Drawn G.H. Map no. 4



- LEGEND**
- QUARTZ, FELDSPAR, BERYLITE AND FELDSPAR BERYLITE
 - GABBRO
 - CHYOLITE
 - FRAGMENTAL
 - ANDESITE
 - MINERALIZATION
 - SCHISTOSITY
 - BANDING
 - PILLOWS
 - TRENCH
 - FAULT, SHEAR

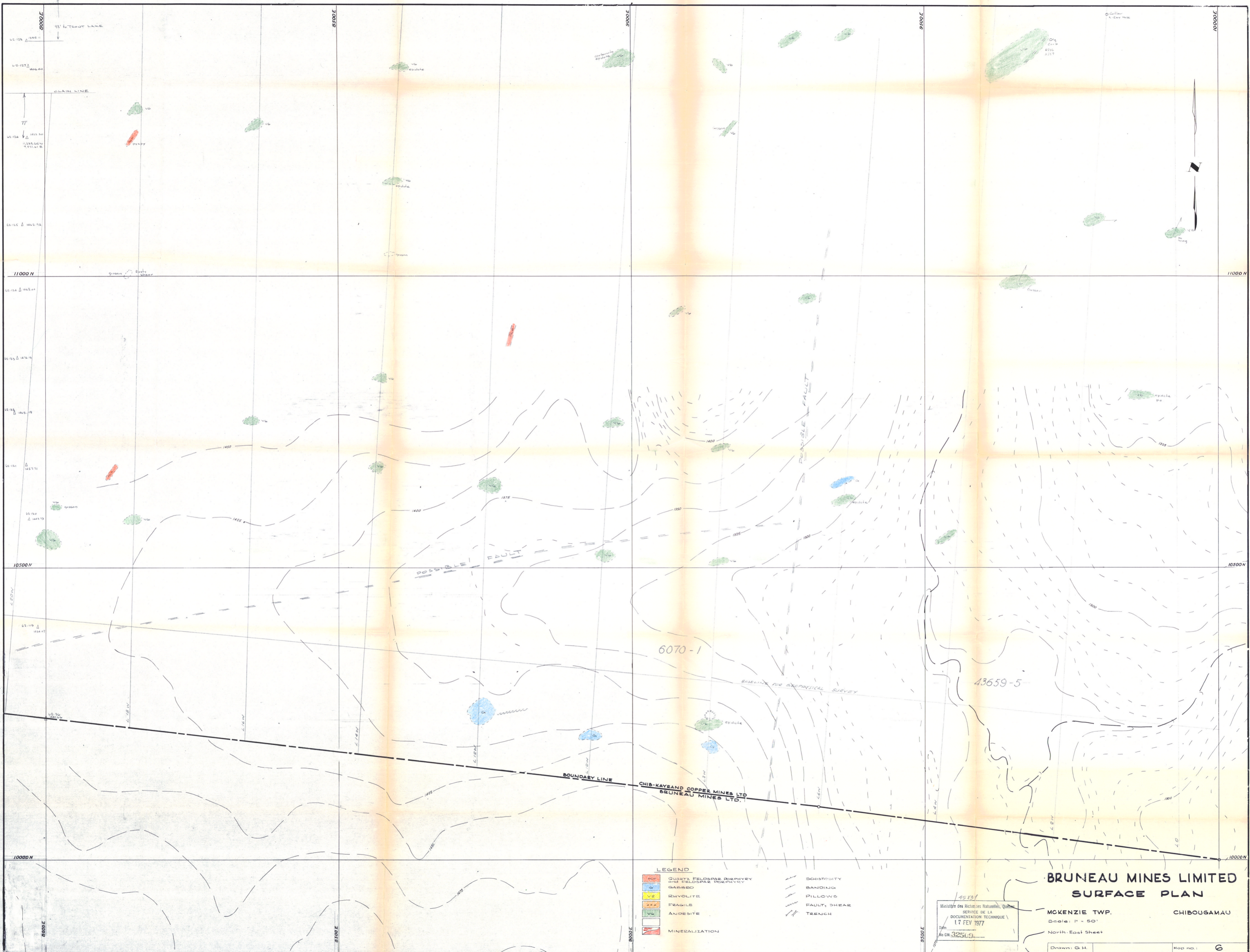


15 X 34
 Ministère des Richesses Naturelles, Québec
 SERVICE DE LA DOCUMENTATION TECHNIQUE
 Date: 17 FÉV 1977
 No. 22509

BRUNEAU MINES LIMITED

MCKENZIE TWP. CHIBOUGAMAU
 Scale: 1" = 50'
 North West Sheet

Drawn: G. H. Map no.: 5



LEGEND

	QUARTZ, FELDSPAR, BOPHYRY and EPOXYIDE MINERALIZATION		SCHISTOSITY
	GABBRO		BANDING
	ZHYOLITE		PILLOWS
	FRAGILE		FAULT, SHEAR
	ANDESITE		TRENCH
	MINERALIZATION		

45131
 Ministère des Ressources Naturelles, Québec
 SERVICE DE LA DOCUMENTATION TECHNIQUE
 17 FEV 1977
 No. 01.32513

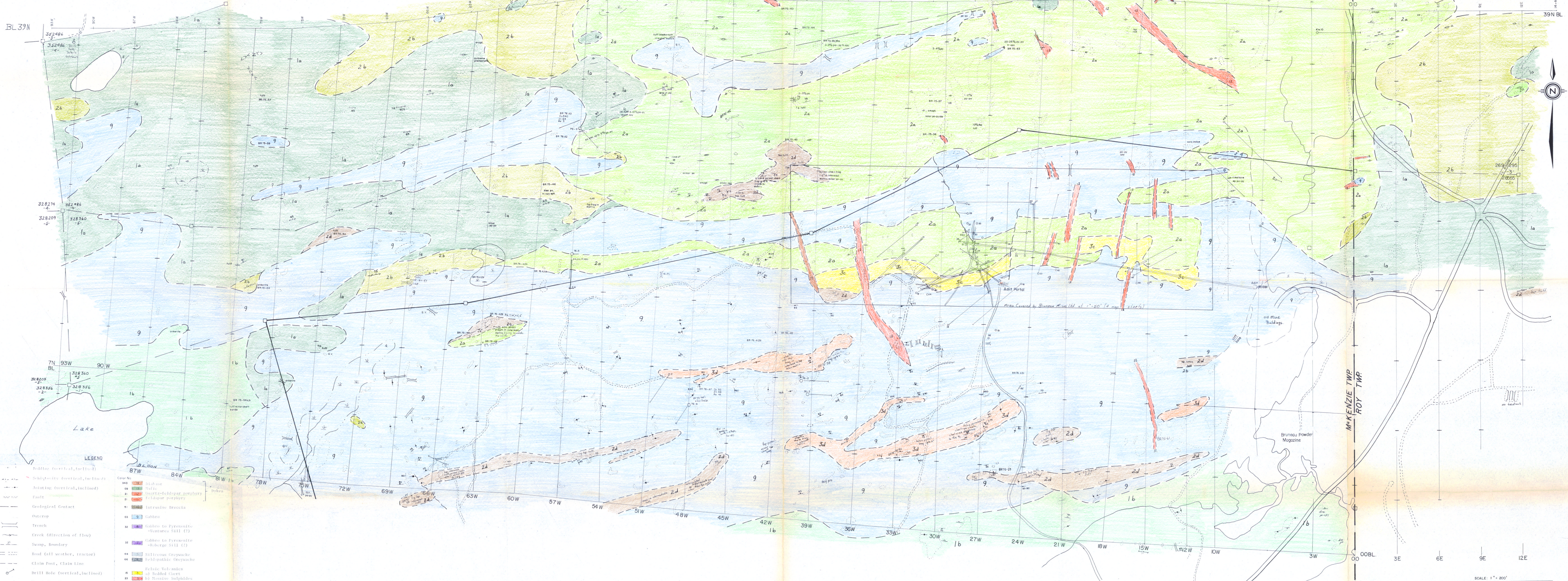
**BRUNEAU MINES LIMITED
 SURFACE PLAN**

MCKENZIE TWP. CHIBOUGAMAU
 Scale: 1" = 50'
 North-East Sheet

Drawn: G.H. Map no: 6

BL 39N

39N BL



- LEGEND**
- Solid line (vertical, inclined)
 - - - - - Dotted line (vertical, inclined)
 - - - - - Fault
 - - - - - Geological Contact
 - - - - - Outcrop
 - - - - - Trench
 - - - - - Creek (direction of flow)
 - - - - - Swamp Boundary
 - - - - - Road (all weather, tractor)
 - - - - - Claim Post, Claim Line
 - o Drill Hole (vertical, inclined)
 - o Sample Location (Co, ppm, Pb, ppm, Zn, ppm, Ag, ppm, Au, ppb)
 - o Consolidated Quebec Yellowknife Mines Ltd.
 - o Pilled
 - o Breccia
 - o Quartz Veins
 - o Pyrite, Pyrrhotite, Chalcopyrite, Magnetite, Epidote, Potassium Feldspar, Chlorite, Bismutinated Sphalerite, Anhydrite, Graphite, Sarcopite

- Color No.**
- 01 Felsic Volcanics (a) Banded Gneiss
 - 02 Felsic Volcanics (b) Massive Sulfides
 - 03 Felsic Volcanics (c) Rhyolite
 - 04 Felsic Volcanics (d) Felsic Agglomerate (Felsic fragments in a felsic matrix)
 - 05 Felsic Tuff
 - 06 Intermediate Volcanics (a) Banded Volcanic (effusives andesite)
 - 07 Intermediate Volcanics (b) Andesite
 - 08 Intermediate Volcanics (c) Intermediate Agglomerate
 - 09 Intermediate Volcanics (d) Feldspathic Tuff
 - 10 Mafic Volcanics (a) Dark Green Chlorite Basalt
 - 11 Mafic Volcanics (b) Light Green Basalt usually pilled
 - 12 Chlorite Tuff (often with pilled)

59 X 30
 Ministère des Richesses Naturelles, Québec
 SERVICE DE LA DOCUMENTATION TECHNIQUE
 17 FEV 1977
 No. GM. 32509

SCALE: 1" = 200'

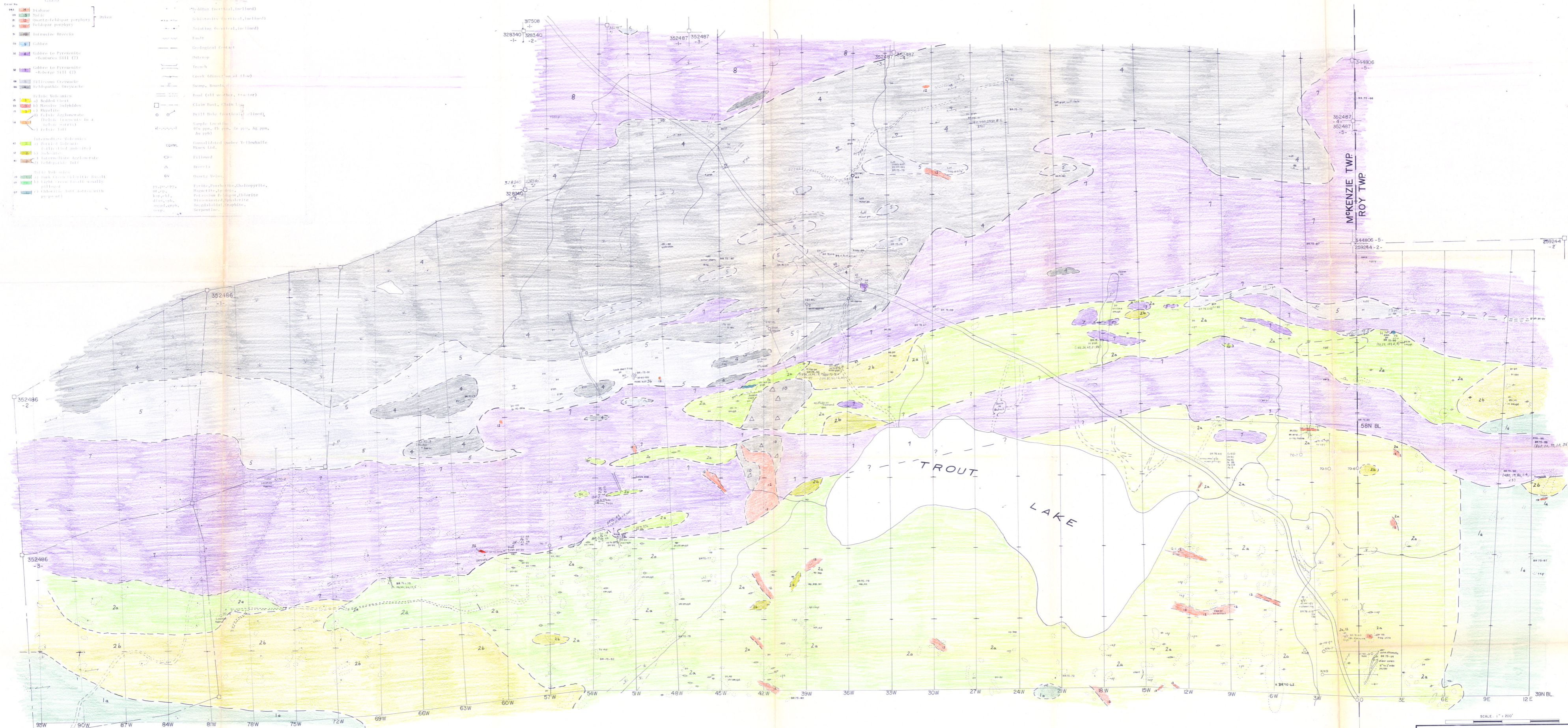
ROUANDA MINING COMPANY, LTD.

GEOLOGICAL SURVEY
BRUNEAU OPTION

Middle Sheet

SCALE	DATE	DRAWN BY	DATE
1" = 200'	17 FEB 1977		

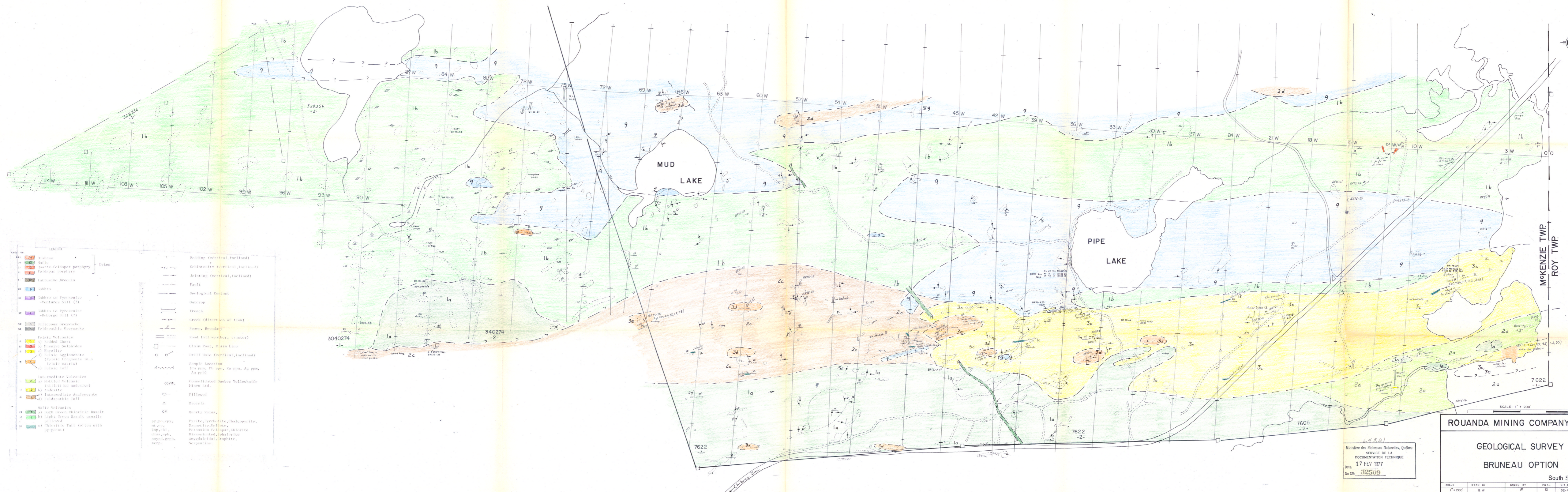
Color No.	Description	Symbol	Description
1	Diorite	(Symbol)	Substrate (vertical, inclined)
2	Basalt	(Symbol)	Substrate (vertical, inclined)
3	Quartz-feldspar porphyry	(Symbol)	Substrate (vertical, inclined)
4	Biotite porphyry	(Symbol)	Substrate (vertical, inclined)
5	Intrusive Breccia	(Symbol)	Fault
6	Gabbro	(Symbol)	Geological Contact
7	Gabbro to Pyroxenite	(Symbol)	Outcrop
8	Gabbro to Pyroxenite	(Symbol)	Trench
9	Gabbro to Pyroxenite	(Symbol)	Creek (direction of flow)
10	Diabase Breccia	(Symbol)	Dumpy, Boulder
11	Diabase Breccia	(Symbol)	Road (all weather, tractor)
12	Diabase Breccia	(Symbol)	Chain Post, Chain Line
13	Diabase Breccia	(Symbol)	Well Hole (vertical, slanted)
14	Diabase Breccia	(Symbol)	Sample location
15	Diabase Breccia	(Symbol)	Contaminated water Y-iodoform
16	Diabase Breccia	(Symbol)	Filled
17	Diabase Breccia	(Symbol)	Stream
18	Diabase Breccia	(Symbol)	Quartz Vein
19	Diabase Breccia	(Symbol)	Pyrite, Pyrrhotite, Chalcopyrite, Magnetite, Hematite, Polysulfide, Sphalerite, Manganese Oxide, Barite, Anhydrite, Gypsum, Serpentine



59 x 34
 Ministère des Richesses Naturelles, Québec
 SERVICE DE LA DOCUMENTATION TECHNIQUE
 Date: 17 FEB 1977
 No. GM. 3251-9

ROUNDA MINING COMPANY, LTD.
 GEOLOGICAL SURVEY
 BRUNEAU OPTION
 North Sheet

DATE	BY	CHKD BY	APP'D BY	DATE
17 FEB 1977	B.W.			



Code	Description
1a	Diabase
1b	Basalt
2a	Quartz-feldspar porphyry
2b	Feldspar porphyry
2c	Intrusive Breccia
2d	Gabbro
3a	Gabbro to Pyroxenite - Ventura Sill (C)
3b	Gabbro to Pyroxenite - Robarge Sill (C)
3c	Siliceous Gneiss
3d	Feldspathic Gneiss
3e	Felsic Volcanics
4a	Basaltic Gneiss
4b	Basaltic Gneiss
4c	Basaltic Gneiss
4d	Basaltic Gneiss
4e	Basaltic Gneiss
5a	Basaltic Gneiss
5b	Basaltic Gneiss
5c	Basaltic Gneiss
5d	Basaltic Gneiss
5e	Basaltic Gneiss
6a	Basaltic Gneiss
6b	Basaltic Gneiss
6c	Basaltic Gneiss
6d	Basaltic Gneiss
6e	Basaltic Gneiss
7a	Basaltic Gneiss
7b	Basaltic Gneiss
7c	Basaltic Gneiss
7d	Basaltic Gneiss
7e	Basaltic Gneiss
8a	Basaltic Gneiss
8b	Basaltic Gneiss
8c	Basaltic Gneiss
8d	Basaltic Gneiss
8e	Basaltic Gneiss
9	Basaltic Gneiss

Symbol	Description
--- (dashed)	Bedding (vertical, inclined)
--- (dotted)	Schistosity (vertical, inclined)
--- (dash-dot)	Jointing (vertical, inclined)
---	Fault
---	Geological Contact
---	Outcrop
---	Trench
---	Creek (direction of flow)
---	Swamp Boundary
---	Road (all weather, tractor)
---	Claim Post, Claim Line
---	Drill Hole (vertical, inclined)
---	Sample Location
---	Consolidated Quebec Yellowknife Mines Ltd.
---	Filled
---	Breccia
---	Quartz Veins
---	Pyrite, Pyrrhotite, Chalcopyrite, Magnetite, Epidote, Potassium Feldspar, Chlorite, Disseminated Sphalerite, Anhydrous, Graphite, Serpentine

64821
 Ministère des Richesses Naturelles, Québec
 SERVICE DE LA
 DOCUMENTATION TECHNIQUE
 Date: 17 FEB 1977
 No. G.M. 32509

ROUANDA MINING COMPANY, LTD.
 GEOLOGICAL SURVEY
 BRUNEAU OPTION
 South Sheet

SCALE	WORK BY	DRAWN BY	PROJ.	N.T.S.	DATE
1" = 200'	B.W.	JP	12	32.0	Dec 1976