

GM 30615

RAPPORT DE TRAVAUX

Documents complémentaires

Additional Files



Licence



Licence

Cette première page a été ajoutée
au document et ne fait pas partie du
rapport tel que soumis par les auteurs.

Énergie et Ressources
naturelles

Québec 

UMEX

UNION MINIERE EXPLORATIONS
AND MINING CORPORATION LIMITED

1058 7^e RUE
VAL D'OR, QUÉBEC, CANADA

TEL.: (819) 824-2994

Val d'Or, le 17 janvier 1975

RAPPORT DE TRAVAUX CANTON MINIAC.

Propriété : 321600 4 et 5
321626 1 à 4
321632 1 à 4
321636 1 à 4

I. TRAVAUX EFFECTUES

Cinq sondages pour une longueur totale de 1364' ont été forés sur le conducteur 1.7 défini précédemment.

Sur la section 8N le sondage DU 117 a été arrêté car il commençait dans les sulfures massifs. Le sondage DU 118 fut abandonné dans le mort terrain. Le DU 119 foré dans de la pyrothine massive a donné des indices en Au prometteur. Le DU 120 a expliqué l'anomalie magnétique.

Sur la section 16N le sondage DU 121 a montré des indices en Zn.

II. CONCLUSION

Les résultats du sondage DU 119 justifient des recherches supplémentaires.

Gilles Imbeau
G. IMBEAU

En annexe: 1 carte de localisation.
1 formule RN-529(1)
1 formule 02.5.4.
5 prix de revient sondages UMEX.
4 descriptions sondages.
1 levé MAG.
1 levé EM.

Ministère des Richesses Naturelles, Québec
SERVICE DE LA
DOCUMENTATION TECHNIQUE

Date: 3 AVR 1975

No GM: 30615

UNION MINIERE EXPLORATIONS AND MINING CORPORATION LIMITED

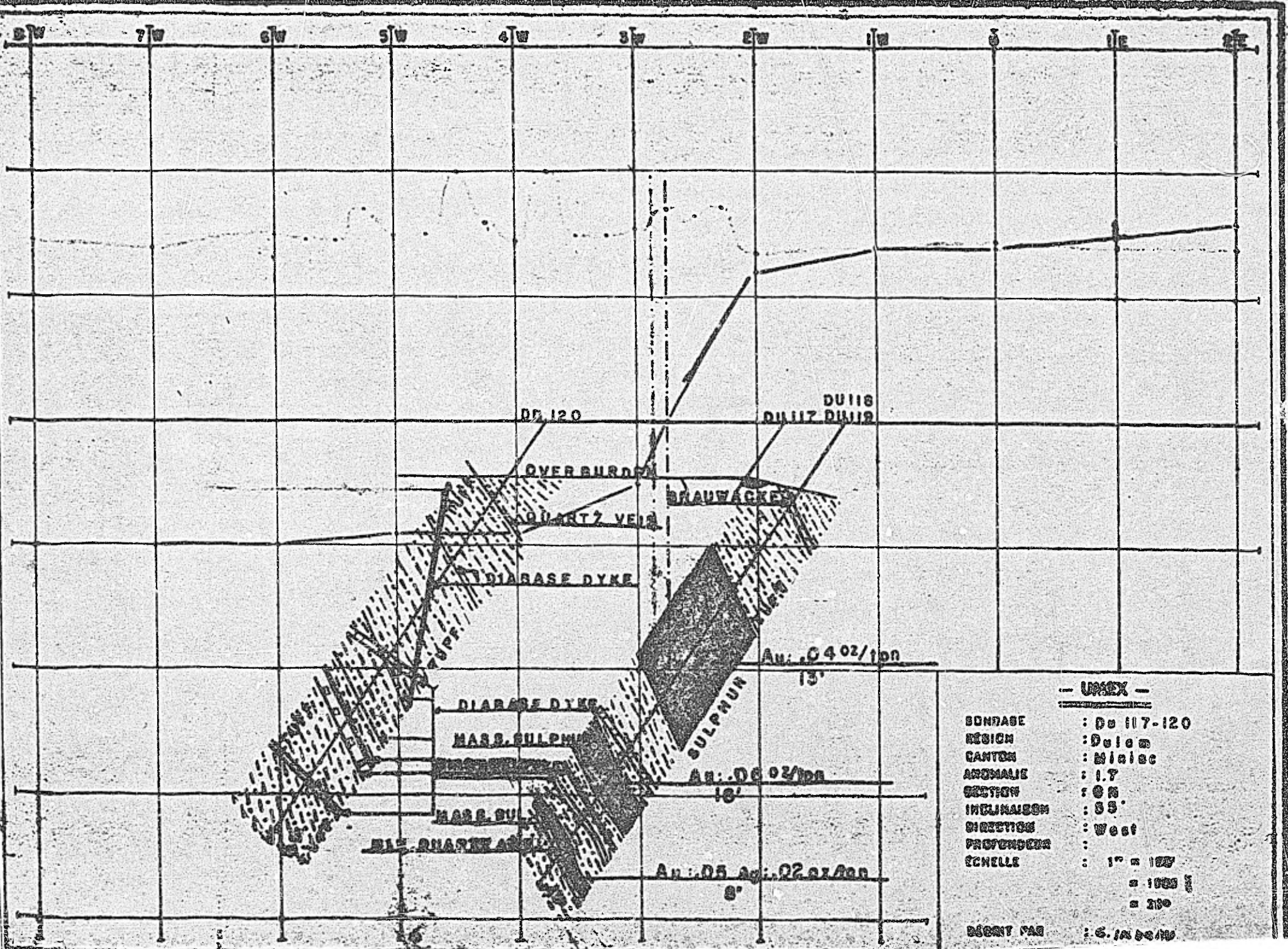
TYP: MIRIAC

DESCRIPTION SONDAGE

REGION: **DALAN** SONDAGE No.: **DU 117.** Profondeur: **70'** Foré par:
 ANOMALIE: **1.7** DIR. et INCL.: **55° West** Commencé le Machine: Décrit par: **G. IDEAU**
 CLAIM: Coord. locales: X=**80** Y=**1+730** Z=..... Terminé le Diam. Forage: **51**

Profondeur		Diagnostics	Descriptions	Minéralisation	Pendage	No Echantillon Témoin
de	à					
0	54	Casing.				
54	59	Massive pyrr.		3482.		
			Hole stopped, because it was begun in massive sulphur, hole will be backed on X: 80			
			Y: 1+250.			
			Hole : DU 118 stopped in overburden			
			DU 119 re-drilling of this section.			

Ministère des Richesses Naturelles, Québec
 SERVICE DE LA DOCUMENTATION TECHNIQUE
 Date: **1 AVR 1975**
 No GM: **30615**



- UNEX -

BONDAGE	: Du 117-120
REGION	: Dolom
CANTON	: Misc
ARCHAIE	: 17
SECTION	: 05
INCLINAISON	: 55
DIRECTION	: West
PROFONDEUR	:
ECHELLE	: 1" = 100'
	" = 1000'
	" = 200'
DESIGN. PAR	: G. J. ...

Sondage n°: DU 119

Région: DULAM

Canton: MINIAC

Anomalie: 1.7

Coordonnées locales: x BN
y 1 + 25W

Commencé le: 6.11.74

Terminé le: 13.11.74.

Tubage: 66'.

Profondeur totale (pieds): 450'

Direction: West

Inclinaison: 55°

Déviation:

Diamètre: EX.

Moyen de transport: Muskeg.

Distance du transport: 2M.

Avion:

Hélicoptère:

Camion:

Tracteur:

Foré par: UMEX.

Distance au point d'eau:

Heures de pompage:

Heures pour montage et démontage:

Ministère des Richesses Naturelles, Québec

SERVICE DE LA
DOCUMENTATION TECHNIQUE

Date: 3 AVR 1975

No GM: 30615

Décrit par: G. IMBEAU

De	A	Formations Traversées	Pendage	Minéralisation
0	66	Casing.		
66.77	77	<u>Tuff.</u> Rk. darkly grey, finely grained, finely banded at 30°, locally massive locally calcite stringers. Hornblende, tremolite, quartz, feldspar, calcite.	30°.	Magnetic pyro tr.
77	82	<u>Mata Grammecke.</u> Rk. darkly grey, locally pink banded, finely grained, finely banded at 30°. Locally calcite stringers, feldspar, hornblende, calcite, biotite, garnet.	30°	-rk. magnetic pyro tr. (3494)
82	162	<u>Tuff.</u> Rk. darkly grey, locally lightly grey, finely grained, from weakly bedded to finely bedded, locally cross-bedded. Loc. calcite stringers. Feldspar, hornblende, quartz, calcite, chlorite. At 146 - 2 inches of feldspar patches.		Locally magnetic, pyro tr.
162	272	<u>Massive sulphur.</u> Rk. brown, locally lightly grayish, locally blackish, finely grained, massive locally finely banded or concordly banded. Quartz, calcite, graphite, sulphur..		Magnetic pyro - 70% (3485 to 3514)

De	A	Formations Traversées	Pendage	Minéralisation
272	319	<u>Tuff: Same as 162- 162'</u>		Magnetite Pyro tr.
319	323	<u>Diabase dyke.</u> Rk. medially grey, brownish whitely spotted? Medially grained feldspar phenoocryst in finely grained matrix. Massive feldspar, biotite, sharp contact at 20'.	20°	Weakly magnetic Pyro tr. (3523)
323	334	<u>Tuff: Same as 82- 162.</u> Garnet.	30°	Magnetite Pyro tr. (3515)
334	367	<u>Massive sulphur.</u> Same as 162- 272.		Magnetic pyro 80%. (3516-3522)
367	374	<u>Tuff: Same as 82-162'</u>		Magnetic pyro tr. (3524)
374	376	<u>Diabase dyke.</u> Same as 319- 373'	25°	Pyro up to 1% (3525)
376	387	<u>Tuff: Same as 82- 162'</u>	20°	Locally magnetic Pyro locally 5% py tr.
387	390	<u>Diabase dyke.</u> Same as 319-323'		Pyro tr. (3526)
390	408	<u>Tuff: Same as 376 - 387'.</u> Locally biotite.		Locally magnetic Pyro up to 30%.
408	420	<u>Massive sulphur.</u> Same as 162- 272'.		Magnetic pyro 50%. (3527 to 3530.)
420	425	<u>Tuff.</u> Rk. darkly grey to black, finely grained calcite filling schistosity at 35'. Feldspar, hornblende, biotite, calcite chlorite. Locally ferruginous calcite.	35°	Weakly magnetic Pyro tr.
425	426	<u>Mineralized quartz aplomcrat.</u> Rk. medially to darkly grey, finely grained finely schistosed at 70'. Quartz, hematite, feldspar, chlorite, magnetite.	70°	Magnetic pyro 7% py tr. (3531)
426	450	<u>Tuff: Same as 420- 425</u> Locally garnets, tremolite. The conductor is explained by the following intersections: 162-272 Pyro 50% 334-367 Pyro 80% 408-420 Pyro 50% 425-426 Pyro 7%	30° 40° 25°	Magnetic pyro tr.

UNION MINIERE EXPLORATIONS AND MINING CORPORATION LIMITED

DESCRIPTION SONDAGE

TWP: MINIAC.

REGION: DULAM SONDAGE No.: DU 119 Profondeur: Foré par: UNEX

ANOMALIE: 1-7 DIR. et INCL.: 55° West Commencé le 6-11-74 Machine: Décrit par: G. J. HENRI

CLAIM: Coord. locales: X=1+25M. Y=8M. Z= Terminé le 11-11-74 Diam. Forage: EX

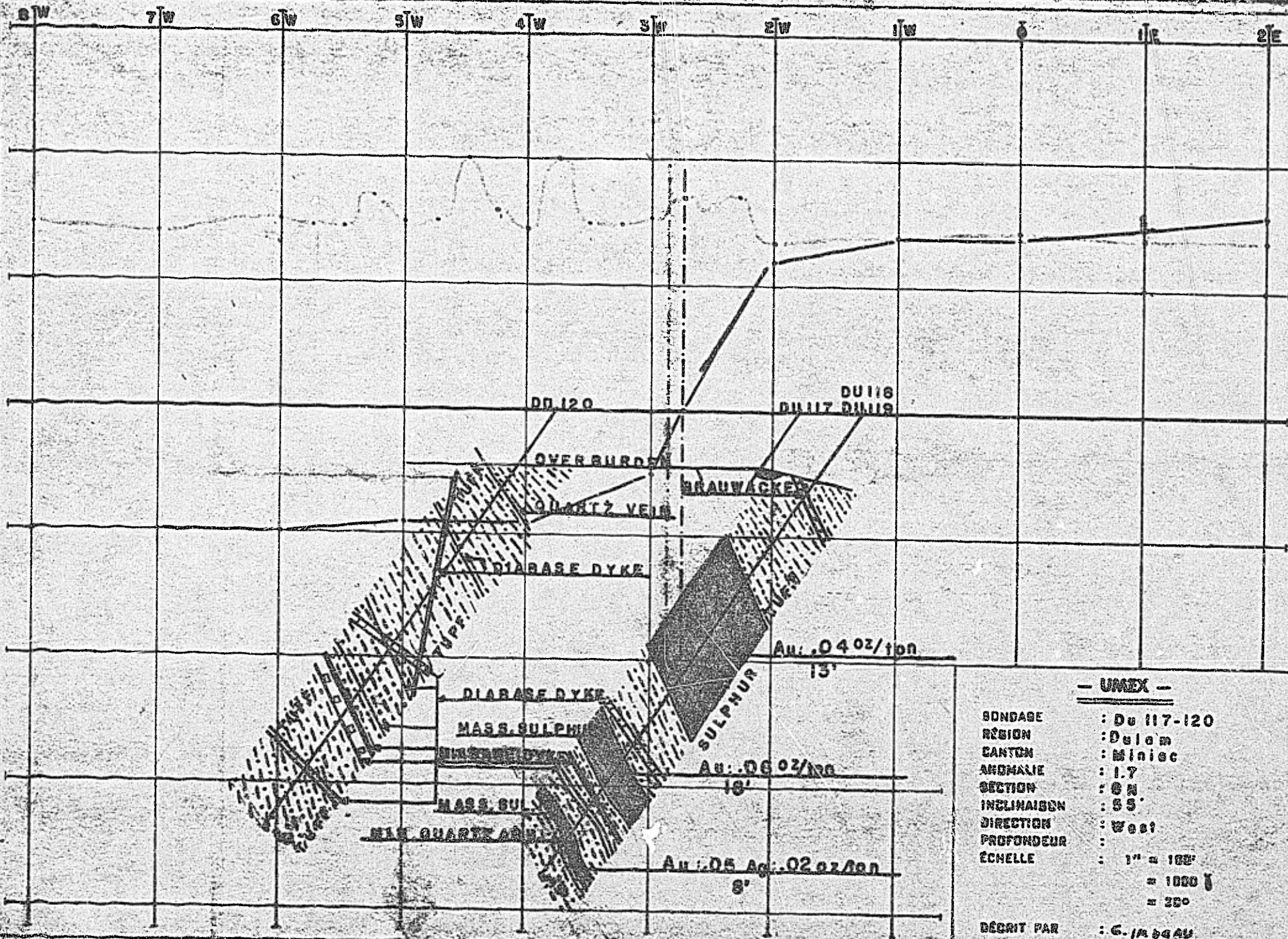
Profondeur		Diagnostics	Descriptions	Minéralisation	Pendage	No Echantillon Témoin
de	à					
0	66		Casing.			
66	77	Tuff.	Rk. darkly gray, finely grained, finely bedded at 30° locally massive. Locally calcite stringers. Hornblende, tremolite, quartz, feldspar, calcite.	Magnetic pyro 30° tr. locally 1%		
77	82	Meta-Granite.	Rk. darkly grey, locally pink bands, finely grained finely bedded at 30°. Locally calcite stringers. Feldspar, hornblende, calcite, biotite, garnet.	Weakly magnetic pyro tr. (3484)		
82	162	Tuff.	Rk. darkly grey, locally lightly grey, finely grained, from weakly bedded to finely bedded, locally cross-bedded. Locally calcite stringers. Feldspar hornblende, quartz, calcite, chlorite at 1/6" 2 inches feldspar patch.	Locally magnetic - Pyro tr.		
162	164	Massive sulphur.	Rk. brown, locally lightly greyish, locally blackish, finely grained, massive locally finely bedded locally conchoidly bedded. Quartz, calcite, graphite, sulphure.	Magnetic pyro 30% (3485)		

Profondeur		Diagnostics	Descriptions	Minéralisation	Pendage	No Echantillon Témoin
de	à					
164	167		Pyro 90%	(3486)		
167	171		50%	3487		
171	174		60%	3488		
174	176		50%	3489		
176	193		30%	3490		
180	183		90%	3491		
183	191		85%	3492		
191	196		50%	3493		
196	202		40%	3494		
202	205		47%	3495		
205	207		80%	3496		
207	211		30%	3497		
211	215		90%	3498		
215	217		60%	3499		
217	221		90%	3500		
221	2 222		15%	3501		
222	229		85%	3502		
226	228		80%	3503		
228	233		85%	3504		
233	237		90%	3505		
237	241		70%	3506		
241	249		60%	3507		
246	253		80%	3508		
250	254		40%	3509		
254	257		80%	3510		
257	264		70%	3511		

Profondeur		Diagnostics	Descriptions	Minéralisation	Pendage	No Echantillon Témoin
de	à					
251	263		Pyro 40%	3512		
263	268		90%	3513		
268	272		75%	3514		
272	319	Tuff.	Same as 82-163	Magnetic possibly magnetite, pyro tr.		
319	323	Diabase dyke.	Rk. mediumly grey, brownish whitely spotted. Mediumly grained feldspar phenocryst in finely grained matrix. Massive. Feldspar biotite, sharp contacts at	Weakly magnetic, pyro tr. (3523) 20°	20°	
323	334	Tuff.	Same as 82-152' Garnet.	Magnetic pyro tr. (3515)	30°	
334	339	Massive sulphur.	Same as 162-272'. Coarsely grained cubic pyrite and rounded pyrite patches.	Magnetic pyro 80% -(3516)		
339	344		Pyro 80%	(3517)		
344	349		Pyro 80%	(3518)		
349	354		Pyro 80%	(3519)		
354	359	Massive sulphur.	Same as 162-272'	Magnetic pyro 95% (3520)		

Profondeur		Diagnostics	Descriptions	Minéralisation	Pendage	No Echantillon Témoin
de	à					
359	364	Massive sulphur.	Pypo 80%	(3521)		
364	367	"	Pypo 80%	(3522)		
367	372	Tuff.	Same as 82-162'	Magnetic Pypo locally 1%.		
372	374	Tuff.	Same as 82-162'	(3524) Pypo tr.		
374	376	Diabase dyke.	Same as 319-323'	Pypo up to 1%.	25°	
376	387	Tuff.	Same as 82' - 162' Mediumly gry green. Sulphur banded at 20° in bands of less than 1 inch.	Locally mag- netic. (3525) Pypo locally 5% cpy tr.	20°	
387	390	Diabase dyke.	Same as 319 - 323.'	Pypo tr. (3526)		
390	408	Tuff.	Same as 376-387' locally biotite, sulphur in thin bands.	Locally magnetic, pypo loc. up to 3%.		
408	413	Massive sulphur.	Same as 162-272'	Magnetic Pypo 80%		

Profondeur		Diagnostics	Descriptions	Mineralisation	Pendage	No Echantillon Témoin
de	à					
413	416		Pypo 20%	(3528)		
416	418		Pypo 1-2%	(3529)		
418	420		Pypo 30%	(3530)		
420	425	Tuff.	Rk. darkly grey, black, finely grained, calcite filling schistosity at 35°. Feldspar hornblende, biotite, calcite, chlorite. Locally ferruginous calcite.	Weakly magnetic, pypo tr.	30°	
425	426	Mineralized quartz agglomerat.	Rk. medium to darkly grey, finely grained finely schistosed at 70°. Quartz, hematite, feldspar, chlorite, magnetite. At 426' - 1 inch massive sulphur - pypo 70%.	Magnetic pypo 7% cpy tr. (3531)	75°	
426	442	Tuff.	Same as 420-425 From 434 to 440 - rk. with circulations of calcite bands around tuff coarse grained fragments. Locally garnets.	Magnetic pypo tr.	30°	
442	447	Tuff.	Same as above but very finely grained and very finely schistosed at 40°, tremolite.	Pypo tr.	40°	
447	450	Tuff.	Same as 426-447'. Garnet.	Magnetic pypo tr.	25°	



- UMEX -

BONDAGE : Du 117-120
 RÉGION : Delam
 CANTON : Miniac
 ANOMALIE : 1.7
 SECTION : 6N
 INCLINAISON : 55°
 DIRECTION : West
 PROFONDEUR :
 ÉCHELLE : 1" = 100'
 = 1000'
 = 250'
 DÉCRIT PAR : G. JA 44 AU

Sondage n°: DU 120

Région: DULAN

Canton: MINIAC

Anomalie: 1-7

Coordonnées locales: x **GN**
 y **3 + 75W**
 Commencé le: **13.11.74**
 Terminé le: **22.11.74**
 Tubage: **53'**
 Profondeur totale (pieds): **410'**
 Direction: **West**
 Inclinaison: **55°**
 Déviation:
 Diamètre: **EX.**

Moyen de transport: **MUSYEG**
 Distance du transport:
 Avion:
 Hélicoptère:
 Camion:
 Tracteur:
 Foré par: **UMEX.**
 Distance au point d'eau:
 Heures de pompage:
 Heures pour montage et démontage:

Décrit par: G. IMBEAU

De	A	Formations Traversées	Pendage	Minéralisation
0	53	<u>Casing.</u>		
53	75	<u>Chlorite tuff.</u> Rk. green, darkly gray, finely grained, weakly banded to finely banded. Chlorite hornblende, feldspar, quartz, leucoxene, calcite.	20°	Magnetic Locally pyro 10% Locally sphalerite 5%. (3539)
75	76	<u>Quartz vein.</u> Rk. white, crystalline, massive quartz.		(3540)
76	137	<u>Chlorite tuff.</u> Same as 53 - 75'. Locally highly sericitized. Locally beds of biotite. Locally garnets. Locally mica-folded. Locally quartz calcite veins.	25° 20°	Locally magnetic, locally pyro. (3541)
137	170	<u>Chlorite tuff.</u> Same as 76-98. Rk. darkly grey greenish. Locally large quantity of amphibole and leucoxene.	30°	Locally magnetic. Locally pyro tr. (3542)
170	175	<u>Micro-diorite dyke.</u> Rk. darkly gray, finely grained massive, quartz, feldspar, little calcite, biotite amphibole, first contact at 65'.	66°	Pyro tr. (3543)
175	176	<u>Chlorite tuff.</u> Same as 76' - 137'		Pyro tr.

De	A	Formations Traversées	Pendage	Minéralisation
176	176.5	<u>Diabase dyke.</u> Rk. medially grey, medially grained, whitely roundly spotted, massive. Feldspar phenocryst in a darker microscopio grained matrix.		
176.5	228	<u>Chlorite tuff.</u> Same as 137 - 170. Locally quartz calcite veins.	35°	Locally weakly magnetic pyro tr. (3544)
228	234	<u>Diabase dyke.</u> Same as 176 - 176.5	0°	
234	235	<u>Chlorite tuff.</u> Same as 137 - 170.		Pyro tr.
235	236	<u>Diabase dyke.</u> Same as 176 - 176.5	30°	Pyro tr.
236	289	<u>Tuff.</u> Same as 137 - 170. At 172' 1 inch sheared zone at 80°.	30°	Locally weakly magnetic pyro tr. (3545)
<u>Remark:</u> MAG anomaly partially explained by magnetite in chlorite tuff from 285- 289.				

UNION MINIERE EXPLORATIONS AND MINING CORPORATION LIMITED

DESCRIPTION SONDAGE

T.M.P. MINIAC.

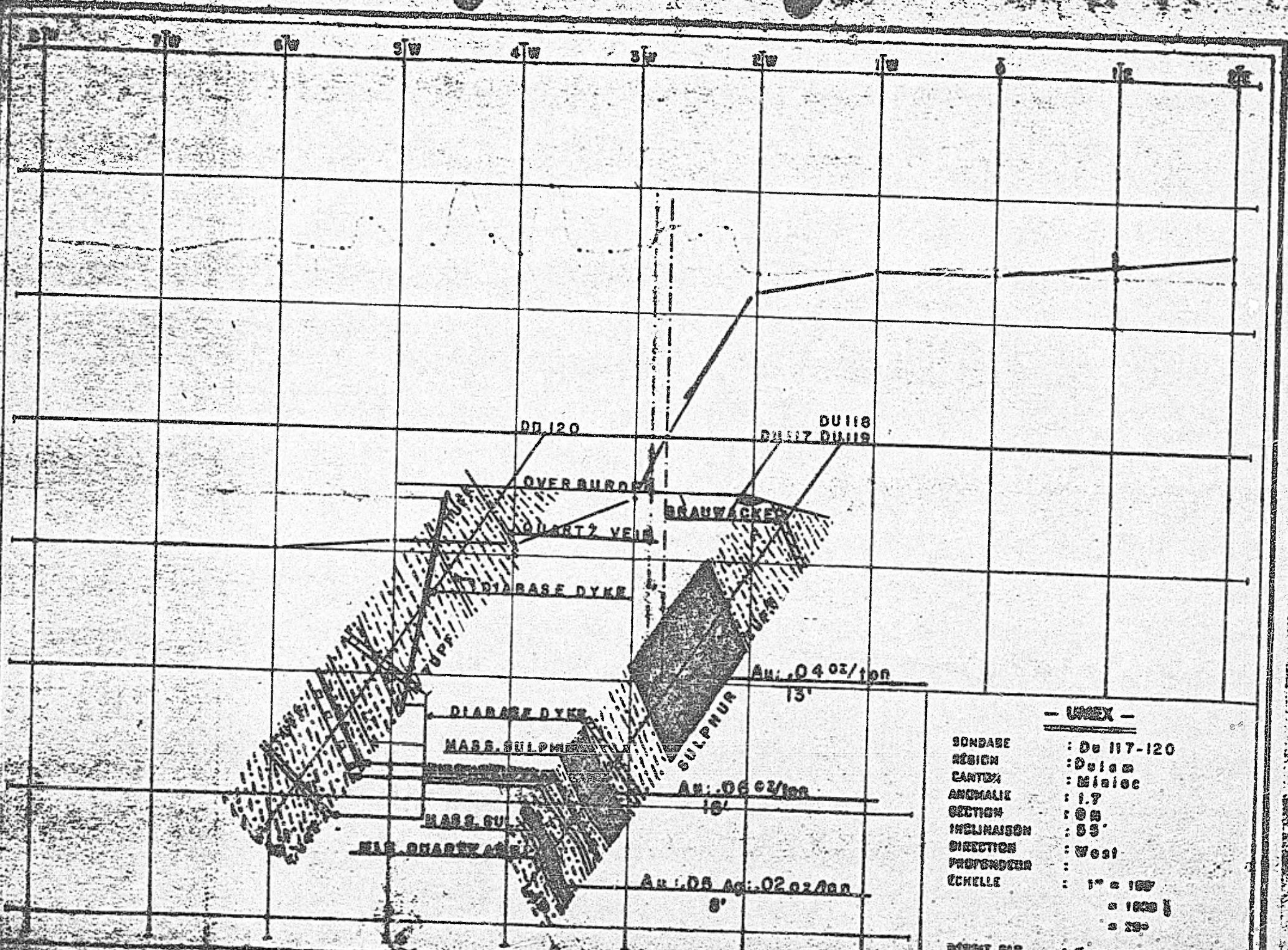
REGION: DILAM SONDAGE No.: DU 120 Profondeur: Foré par: UPEX
 ANOMALIE: 1-2 DIR. et INCL.: 55° West Commencé le 13.11.74 Machine: Décrit par: G. IMBEAU
 CLAIM: Coord. locales: X=BN Y=3.75u Z=..... Terminé le 22.11.74 Diam. Forage: EX

Profondeur		Diagnostics	Descriptions	Minéralisation	Pendage	No Echantillon Témoin
de	à					
0	53		Casing.			
53	55	Chlorite tuff.	Rk. green to darkly gray, finely grained, weakly banded to finely banded. Chlorite quartz, feldspar, hornblende calcite, laumontite. Random patches of pyro and sphalerite mediumly grained.	Magnetic pyro 10% sphalerite locally 5%. (3539)	20°	
55	75	Chlorite tuff.	Same as above.	Pyro tr.		
75	76	Quartz vein.	Rk. white, crystalline, massive quartz.	(3540)		
76	98	Chlorite tuff.	Same as 53-55. Locally highly seritized. Locally beds of biotite. Locally garnets.	pyro tr.		
98	101	Chlorite tuff.	Same as above, more folded.	Magnetic pyro 1% sphalerite tr. (3541)		

Profondeur		Diagnostics	Descriptions	Minéralisation	Pendage	No Echantillon Témoin
de	à					
101	133	Chlorite tuff.	Same as 76 - 98. Locally quartz calcite veins.	Pypo tr.	20-25°	
133	137	Chlorite tuff.	Same as above.	Pypo tr. (3542)		
137	170	Chlorite tuff.	Same as 76- 98' Rk. darkly gray greenish, locally large quantity of amphibole and leucoxane.	Locally magnetic Locally pypo tr.	30°	
170	175	Mica diorite dyke.	Rk. darkly gray, finely grained, massive quartz, feldspar, little calcite, biotite, amphibole. Locally pypo in hair like stringers. First sharp contact at 65°.	Pypo tr. (3543)	65°	
175	176	Chlorite tuff.	Same as 76- 98.	Pypo tr.		
176	176.5	Bishop dyke.	Rk. mediumly gray, mediumly grained, whitely roundly spotted, massive. Feldspar phenocryst in a darker microscopic matrix.			
176.5	186	Chlorite tuff.	Same as 137- 170. Locally quartz - calcite veins.	Pypo tr.	35°	

Profondeur		Diagnostics	Descriptions	Minéralisation	Pendage	. No Echan- tillon Témoins
de	à					
185	188	Chlorite tuff.	Same as 176.5 - 186.	Weakly magnetic Pyro tr. (3544)		
188	228	Chlorite tuff.	Same as 137- 170.	Weakly magnetic Pyro tr.	35°	
228	234	Dabase dyke.	Same ^{as} 176 - 176.5 Last contact at 0° to 5°.	Pyro tr.	0°	
234	235	Chlorite tuff.	Same as 137- 170.	Pyro tr.	30°	
235	236	Dabase dyke.	Same as 228 - 224 . Two contacts at 30°.	Pyro tr.	30°	
236	280	Chlorite tuff.	Same as 137 - 170' - at 172 1 inch (through it) sheared zone at 80°.			
280	282	Chlorite tuff.	Same as above with 20% of quartz calcite veins.	Weakly magnetic pyro tr. (3545)		
282	285	Chlorite tuff.	Same as 137 - 170.	Pyro tr.	30°	
285	289	Chlorite tuff.	Same as above with 10% of quartz calcite veins.	Magnetic pyro up to 2% (3546)		

Profondeur		Diagnostics	Descriptions	Minéralisation	Pendage	No Échan- tillon Témoïn
de	à					
289	291	Diabase dyke.	Same as 176 - 176.5	Pypo tr.	28°	
291	303	Chlorite tuff.	Same as 137 - 170	Pypo tr.	30°	
303	304	Diabase dyke.	Same as 176 - 176.5			
304	350	Chlorite tuff.	Same as 137 - 170.	Pypo tr.	30°	
350	353	Diabase dyke.	Same as 176 - 176.5 Contacts at 10°.	Pypo tr.	10°	
353	359	Chlorite tuff.	Same as 76 - 98. Locally up to 15% - garnets. Locally mica folds. Calcite quartz veinlets.	Pypo tr. Magnetic.	30°	
359	364	Chlorite tuff.	Same as above.	Magnetic pypo tr. (3547)		
364	410	Chlorite tuff.	Same as 353 - 359.	Magnetic pypo tr.		
			Remark: MAG anomaly partially explained by magnetite in chlorite tuff from 285 - 289.			



- UNEX -

SONDAGE	: Du 117-120
RÉGION	: Orléans
CANTON	: Miniac
ANOMALIE	: 1.7
SECTION	: 02
INCLINAISON	: 85°
DIRECTION	: West
PROFONDEUR	:
ÉCHELLE	: 1" = 100'
	" = 1000'
	" = 2500'
DÉBIT PAR	: 6.10 l/100'

Sondage n°: **DU 121**

Région: **DULAM**

Canton: **MINIAC**

Anomalie **1.7**

Coordonnées locales: x **16N**
 y **5 +20W**

Commencé le: **23.11.74**
 Terminé le: **29.11.74**

Tubage: **364.6**
 Profondeur totale (pieds): **364.6**

Direction: **West**
 Inclinaison: **60°**
 Déviation:
 Diamètre: **EX.**

Moyen de transport:
 Distance du transport:
 Avion:
 Hélicoptère:
 Camion:
 Tracteur:
 Foré par: **UMEX**
 Distance au point d'eau:
 Heures de pompage:
 Heures pour montage et démontage:

Décrit par: **A. GAUDET**

De	A	Formations Traversées	Pendage	Minéralisation
0	64	Casing.		
64	216.6	tuff - amphibolitized probably volcanics.	P-55°	(3548) 136-144 weak popy disc.
			P-60°	(3549) 141-146 weak popy disc.
				(3550) 146-152 weak popy disc.
				(3551) 152-159 weak popy disc.
				(3552) 159-165 weak popy disc.
				(3553) 165-166 semi-massive popy good magnetite.
				(3554) 166-172 weak popy disc.

Ministère des Richesses Naturelles, Québec
 SERVICE DE LA
 DOCUMENTATION TECHNIQUE
 Date: **3 AVR 1975**
 No. Doc: **30615**

JEE 5330 24-7-71

Do	A	Formations Traversées	Pendage	Minéralisation
				(3555) 172-177 weak popy diss.
				(3556) 177-182 weak popy diss.
		Quartz carbonate zone, good magnetica.		(3557) 182-187 fair to good popy approx. 15% good magnetica.
				(3558) 187-191, fair to good popy approx. 15% good mag.
				(3559) 191-195 weak popy diss.
				(3560) 195-200 weak popy diss.
				(3561) 200-205 weak popy diss.
				(3562) 205-210 weak popy diss.
				(3563) 210-217 weak popy diss.
216.6	225	Tuff volcanic, silicified.		(3564) 217-222, fair to good magnetica.
225	232	Porphyritic granite.		(3565) 222-227 weak popy.
				(3566) 227-232, weak popy.
232	260	Tuff intercalated with dykes of porphyritic granite.		(3567) 232-237 weak popy diss. 233- 2" popy. 234 -2" popy. 237-242 weak popy diss.

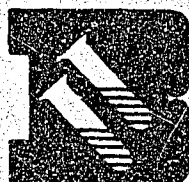
Da	A	Formations Traversées	Pendage	Minéralisation
		Quartz carbonate zone, good megs.		247-248 weak popy disc. 248-250 fair to good popy approx. 15%-20%. 250-251 weak popy.
			D = 45°	
260	271	Porphyritic granite.		
271	276	Amphibolite.		
276	298	Porphyritic granite intercalated with narrow sections of banded grey tuff (volcanic.)		
298	364	Granite .		
		364' : End of the hole.		
		Note: Conductor and magnetic association is explained by the following intersections:		
		165 - 166 semi-massive popy good magnetic.		
		182 - 187 approx. 15% popy. " "		
		187 - 191 approx. 15% popy. " "		
		217 - 222 approx. 10% popy. " "		
		248 - 250 approx. 15-20% popy " "		
		From 136 - 250 appears to be a magnetic zone with the above sections the stronger.		

Profondeur		Diagnostics	Descriptions	Minéralisation	Pendage	No. Echan- tillon Témoïn
de	à					
				(3552)		
				159-166		
				weak popy dissen.		
				(3553)		
				165-166		
				semi-massive popy.		
				(3554)		
				166-172		
				weak popy dissen.		
				(3555)		
				172-177		
				weak popy dissen.		
				(3556)		
				177-182		
				weak popy dissen.		

Profondeur		Diagnostics	Descriptions	Minéralisation	Pendage	No Echantillon Témoin
de	à					
			Quartz carbonate zone. (good magnetica.)	(3557) 182-187	fair to good popy, approx. 15%	
			Quartz carbonate zone. (good magnetica.)	(3558) 187-191	fair to good popy approx. 15%	
				(3559) 191-195	weak popy dissem.	
				(3560) 195-200	weak popy dissem.	
				(3561) 200-205	weak popy dissem.	
				(3562) 205-205	weak popy dissem.	

Profondeur		Diagnostics	Descriptions	Minéralisation	Pendage	No Echantillon Témoin
de	à					
				(3563)		
				210-217		
				weak popy diss.		
216.16	225	Tuff - probably volcanics, silicified.	Rk. light greenish gray, fine grained. Rc. same as the above - 64- 216.16' but more silicified with less carbonate (217- 222 good magnetics).	(3564)		
				217-222		
				fair to good popy approx. 10%.		
225	232	porphyritic granite.	Rk. light grey, medium grained. Rc. phenocrysts of smoky quartz fine sericite / muscovite flakes and very minor plag. feldspar.	(3565)		
				222-227		
				weak popy diss.		
				(3566)		
				227-232		
				weak popy diss.		
232	261	tuff - intercalated with narrow dykes of porphyritic granite.	Rk. grayish green, fine grained. Rc. same as from 216- 225 appears to have more brown felsitic sections.	(3567)		
				232-237		
				weak popy diss.		
			233- 2" popy	233- 2" popy		
			234- 2" popy good magnetics.	234- 2" popy		
				(3568)		
				237-242		
				weak popy diss.		

Profondeur		Diagnostics	Descriptions	Minéralisation	Pendage	No Echantillon Témoïn
de	à					
260	271	Porphyritic granita.	Rk. Rc. same as from 225 - 232 .	(3571) 250-251 weak popy dias.		
271	276	Amphibolite.	Rk. green, fine grained , banded, schisto- sand. Rc. fine hornblend matrix, some scattered plag. crystals, minor quartz.		Po= 45°	
276	298	Porphyritic granite intercalated with narrow sections of banded grey tuff.				
298	364.6	granite.	Rk. light grey to almost white, med. grained Rc. mainly quartz, scattered sericite , mus- covite clusters minor hornblend biotite , some plag. feldspar. 364.6 = End of the hole.			
<p><u>Note:</u> Conductivity and magnetic association is explained by the following interections.</p> <p>155 - 166 some massive popy - good magnetics.</p> <p>182 - 187 approx. 15% popy - " "</p> <p>187 - 191 approx. 15% popy - " "</p> <p>217 - 222 approx. 10% popy - " "</p> <p>246 - 250 approx. 15-20% popy " "</p>						



BOURLAMAQUE ASSAY OFFICE REG'D.

DALE MELNBARDIS, PROPRIETOR

P. O. BOX 550
147 PERRAULT AVENUE
VAL D'OR, QUE. J9P 4P5
OFF. (819) 824-4337
RES. (819) 824-4355



CERTIFICATE OF ANALYSIS

U.M.E.X. Exploration Ltd.,

No 26783

Val. Or. Que., December 11 1974

SAMPLES
ECHANTILLONS Core

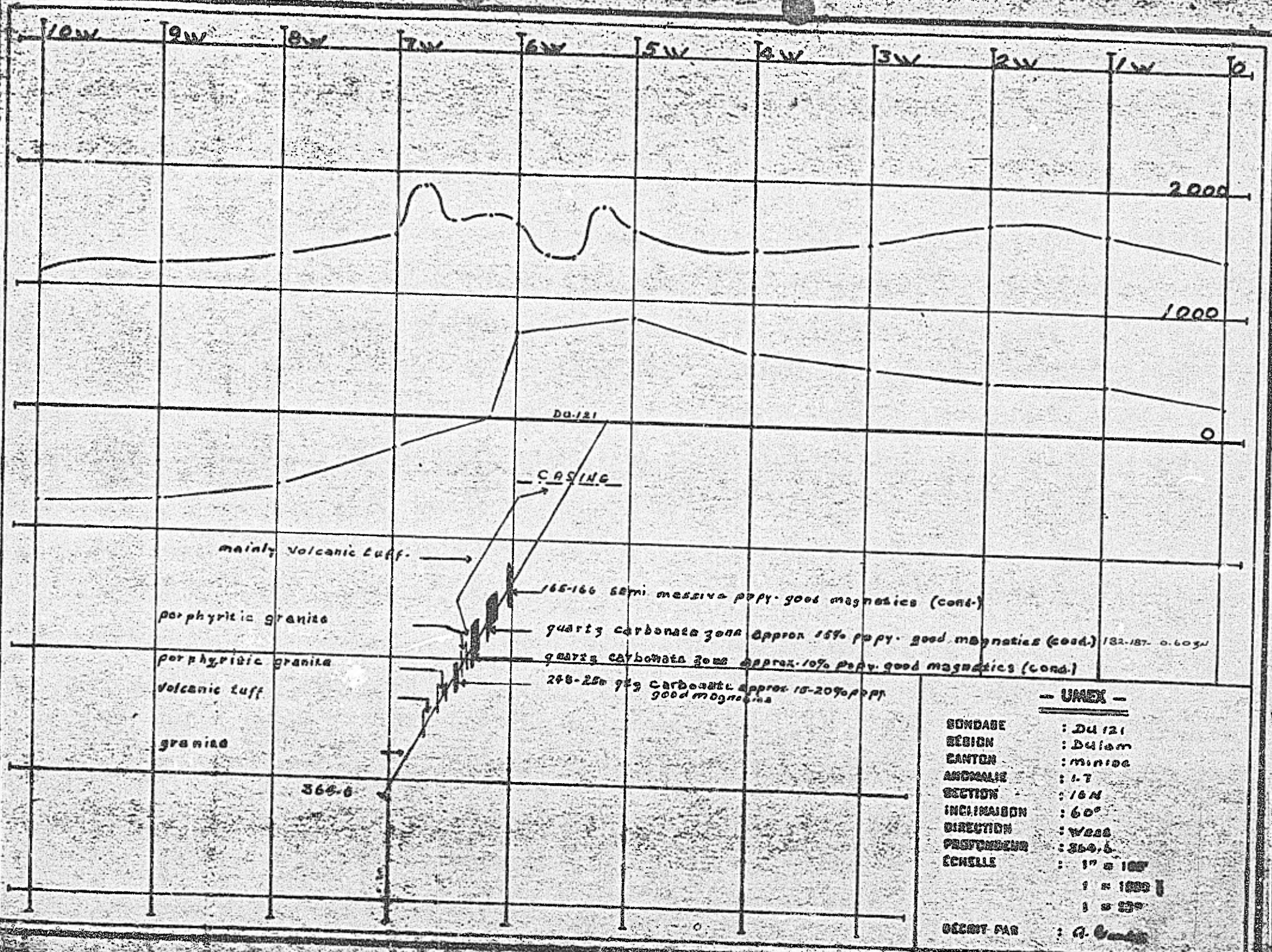
RECEIVED FROM
RECU DE A. Gaudet, Dec. 10

ASSAYS
ANALYSE 24 Au, 5 Zn

<u>Sample No.</u>	<u>Au oz/ton</u>	<u>Zn %</u>
3548	Trace	
49	Nil	
3550	Nil	
51	Nil	
52	Nil	
53	0.01	
54	Trace	
55	Trace	
56	Trace	
57	Trace	0.60
58	Trace	0.06
59	Trace	0.01
3560	Trace	0.01
61	Trace	
62	Nil	
63	Nil	
64	0.01	0.08
65	Trace	
66	Trace	
67	0.01	
68	Trace	
69	Trace	
3570	Trace	
71	Trace	

DU 121

Alfred Gaudet Assayer



mainly Volcanic tuff.

porphyritic granite

porphyritic granite

Volcanic tuff

granite

DU 121

CASING

165-166 semi massive popy. good magnetics (cont.)

quartz carbonate zone approx 15% popy. good magnetics (cont.) 182-187. 0.6034

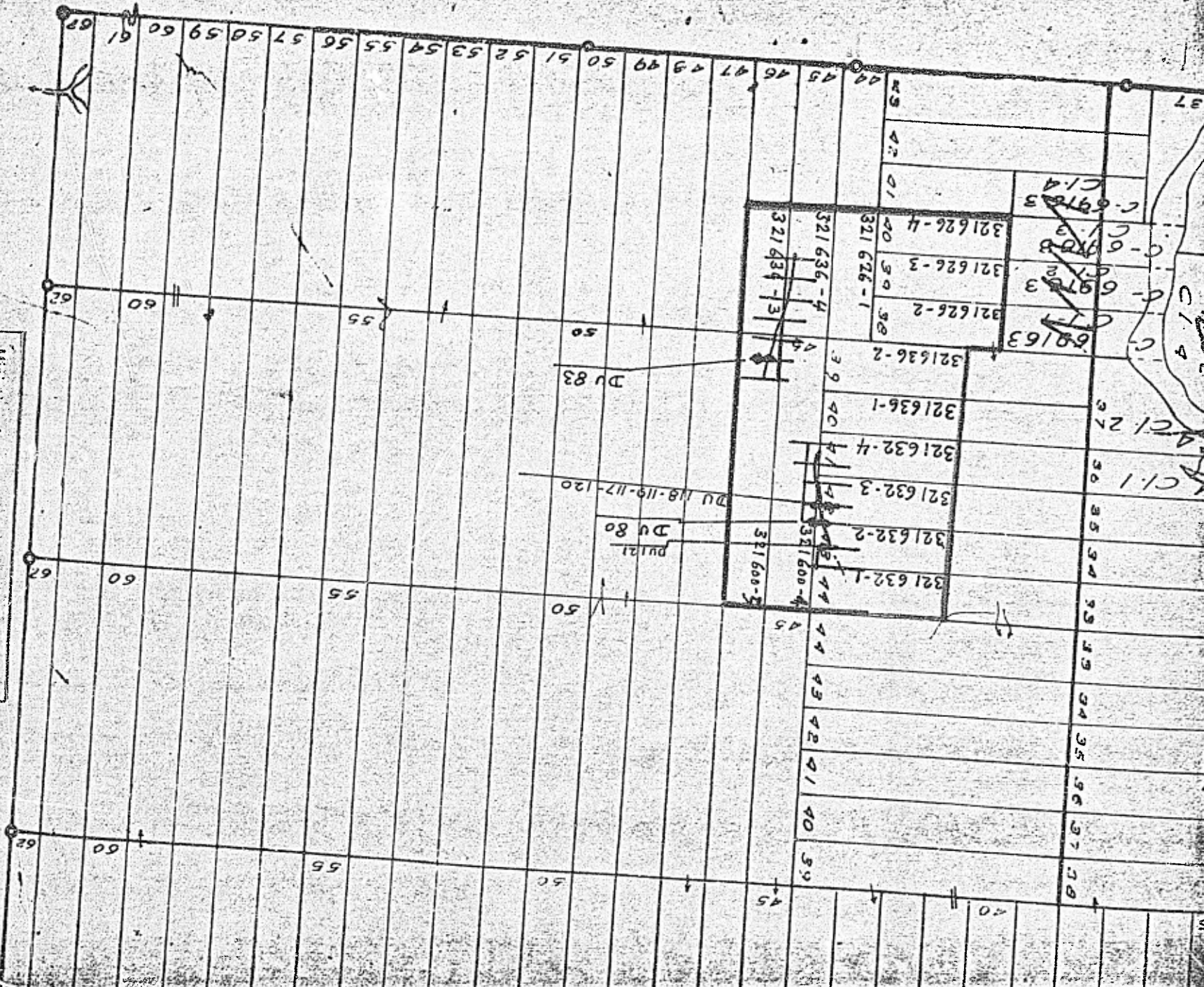
quartz carbonate zone approx 10% popy. good magnetics (cont.)

248-250 quartz carbonate approx 15-20% popy. good magnetics

366.6

- U.M.S. -

BONDAGE : Du 121
 REGION : Dulam
 CANTON : minico
 ANOMALIE : 1.7
 SECTION : 16N
 INCINATION : 60°
 DIRECTION : West
 PROFONDEUR : 366.6
 ECHELLE : 1" = 100'
 1" = 1000'
 1" = 50'
 DECRET PAR : G. G...



PLAN No.C-1184

Ministère des Richesses Naturelles, Québec
 SERVICE DE LA
 DOCUMENTATION TECHNIQUE
 Date: 3 AVR 1975
 No GM: 30615

1184C