

Scale 1"=20m.

LEGEND
 O— Diamond Drill Hole
 Area covered by E.M. Survey

GALINEE TWP.
 Scale 1"=1/2m.

Ministère des Richesses Naturelles, Québec
 SERVICE DES GITES MINÉRAUX
 No GM- 18801

DOME EXPLORATION (CANADA) LTD.				
KUSTEN MINES LIMITED				
EXPLORATION 1966				
GENERAL PLAN				
SCALE	DATE	BY	NFS No.	DWG. No.
	10-11-66	C.H.S.	32-F-12	1.

Work undertaken by
BARRINGER RESEARCH LTD, Toronto, Canada.

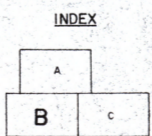
KUSTEN MINES LIMITED	
GALINEE TWP. - QUEBEC	
LOCALITY PLAN	
JULY 1966	DWG. 5-151-1



DOME EXPLORATION (CANADA) LIMITED
 KUSTEN MINES LIMITED
 DIAMOND DRILL PLAN
 SCALE DATE BY N.T.S. DWG. NO.
 1"=200' Nov 15/66 G.H.S. 32-F-12 5

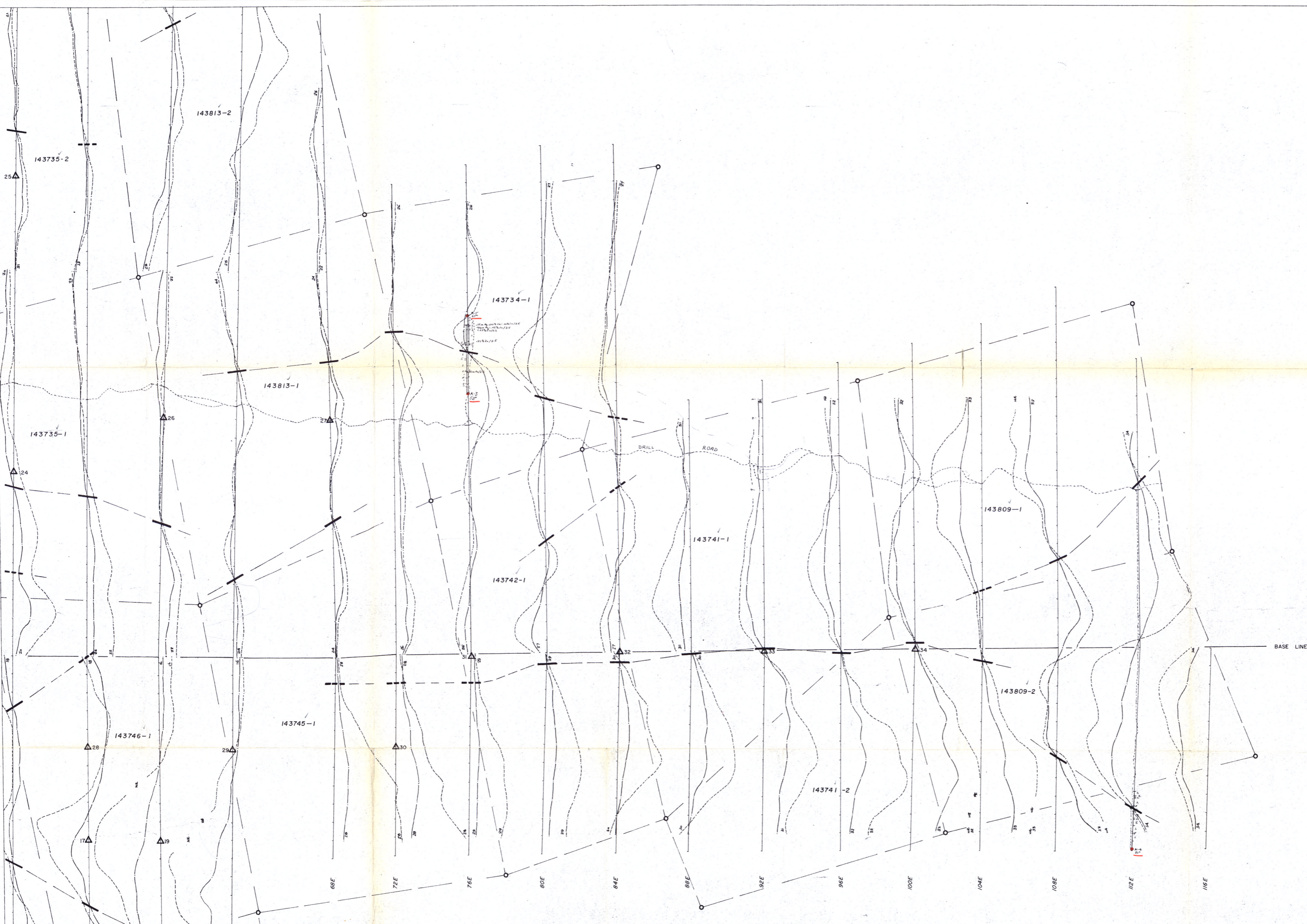
Ministère des Richesses Naturelles, Québec
 17 JAN 1967
 SERVICE DES GITES MINÉRAUX
 No GM-18661
PUBLIC

- Legend**
- Profile - Scale 1"=20' - 1000 cps.
 - - - Profile - Scale 1"=20' - 5000 cps. (McPhar SS15)
 - Profile - Scale 1"=20' - 1000 cps. (LEM 2)
 - △ Transmitter location
 - Conductor interpreted
 - - - Questionable



Work undertaken by
BARRINGER RESEARCH LTD., Toronto, Canada.

KUSTEN MINES LIMITED
 GALINEE TWP. - QUEBEC
 VERTICAL LOOP E.M.
 SURVEY
 JULY 1966 Scale 1"=200' DWG. 5-151-2B

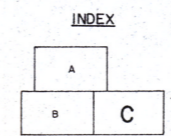


DOME EXPLORATION (CANADA) LIMITED
 KUSTEN MINES LIMITED
 DIAMOND DRILL PLAN
 SCALE: 1"=200'
 DATE: Nov 25/66
 BY: C.H.S.
 N.T.S.: 32-F-12
 DWG: 6

Ministère des Richesses Naturelles, Québec
 17 JAN 1967
 SERVICE DES GITES MINÉRAUX
 18801
 No G.M.

PUBLIC

- Legend**
- Profile - Scale 1"=20' - 1000 cps.
 - - - Profile - Scale 1"=20' - 5000 cps. (McPhar SS15)
 - Profile - Scale 1"=20' - 1000 cps. (L.E.M. 2)
 - △ Transmitter location
 - - - Conductor interpreted
 - Questionable



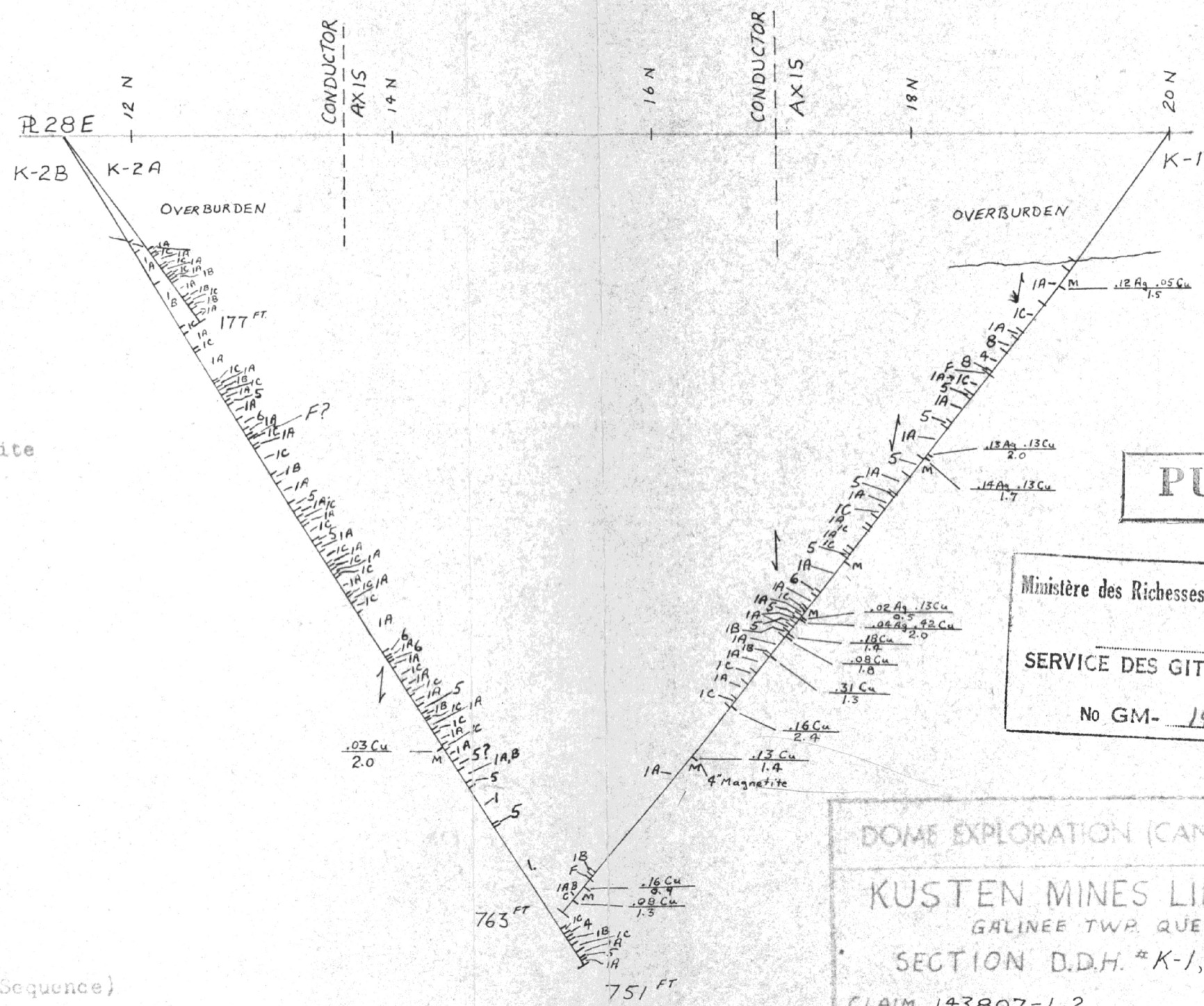
Work undertaken by
 BARRINGER RESEARCH LTD, Toronto, Canada.

KUSTEN MINES LIMITED		
GALINEE TWR - QUEBEC		
VERTICAL LOOP E.M. SURVEY		
JULY 1966	Scale 1"=200'	DWG. 5-151-2C

1013

CLAIM 143807-1

CLAIM 143807-2



LEGEND

1. GABBRO
 - A. Unaltered and Anorthosite
 - B. Silicified
 - C. Chloritized
2. QUARTZ
3. DIORITE DYKE
4. QUARTZ-FELDSPAR PORPHYRY
5. ANDESITE
6. LAMPROPHYRE DYKE
7. GRANITE
8. RHYOLITE (Intrusive)

F fault
M Mineralization

ASSAYS $\frac{\text{Oz. Ag. \%Cu, \%Zn}}{\text{width in feet}}$

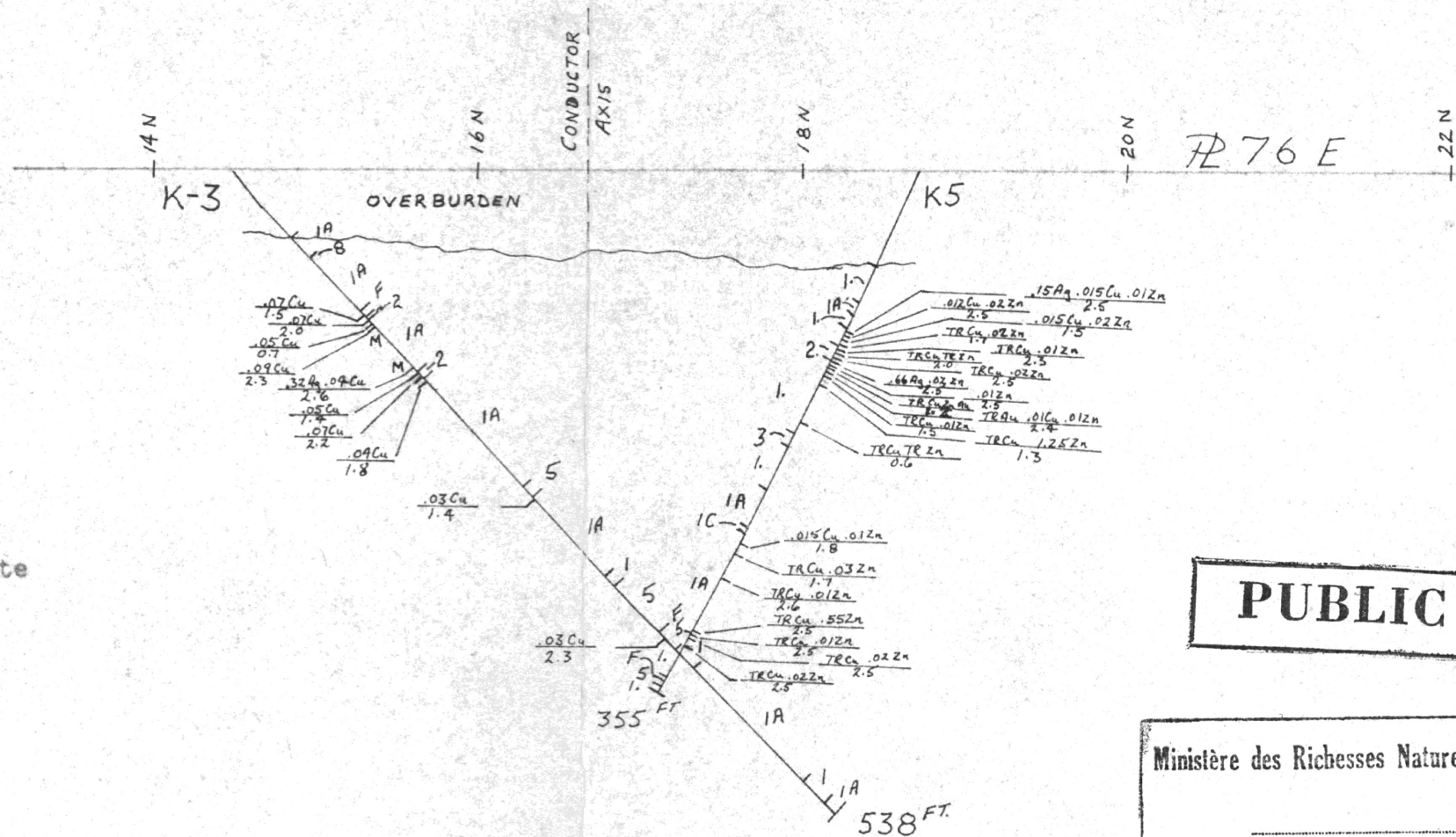
(Note: Units not in geological Sequence)

PUBLIC

Ministère des Richesses Naturelles, Québec
SERVICE DES GITES MINÉRAUX
No GM- 189.01

DOME EXPLORATION (CANADA) LIMITED
KUSTEN MINES LIMITED
GALINEE TWR. QUEBEC
SECTION D.D.H. #K-1, 2A, 2B
CLAIM 143807-1,2

SCALE	DATE	BY	N.T.S.	DWG.
1" = 100'	Nov. 14/66	C.H.S.	32-F-12	2



LEGEND

- 1. GABBRO
 - A. Unaltered and Anorthosite
 - B. Silicified
 - C. Chloritized
- 2. QUARTZ
- 3. DIORITE DYKE
- 4. QUARTZ-FELDSPAR PORPHYRY
- 5. ANDESITE
- 6. LAMPROPHYRE DYKE
- 7. GRANITE
- 8. RHYOLITE (Intrusive)

F Fault

M Mineralization

ASSAYS $\frac{\text{Oz. Ag, \%Cu, \%Zn}}{\text{width in feet}}$

(Note: Units not in geological Sequence)

PUBLIC

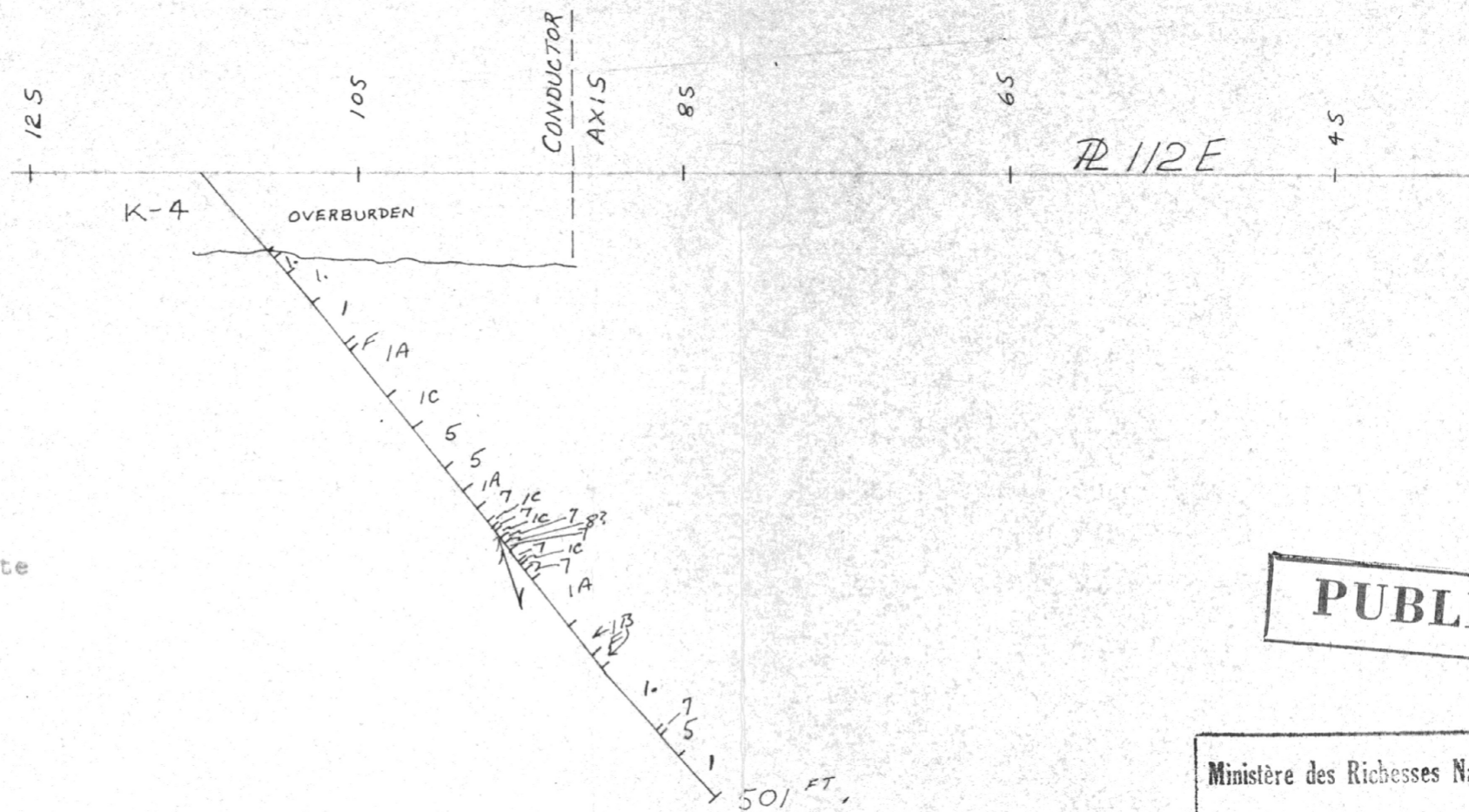
Ministère des Richesses Naturelles, Québec
 SERVICE DES GITES MINÉRAUX
 No GM- 18801

DOME EXPLORATION (CANADA) LIMITED

KUSTEN MINES LIMITED
 GALINEE TWP QUEBEC
 SECTION D.D.H. #K3,5

CLAIM 143734 - 1

SCALE	DATE	BY	N.T.S. #	DWG #
1"=100'	Nov 14/66	C.H.S.	32-F-12	3



LEGEND

1. GABBRO
 - A. Unaltered and Anorthosite
 - B. Silicified
 - C. Chloritized
2. QUARTZ
3. DIORITE DYKE
4. QUARTZ-FELDSPAR PORPHYRY
5. ANDESITE
6. LAMPROPHYRE DYKE
7. GRANITE
8. RHYOLITE (Intrusive)

F fault

M Mineralization

ASSAYS $\frac{\text{Oz. Ag. \%Cu. \%Zn}}{\text{width in feet}}$

(Note: Units not in geological Sequence)

PUBLIC

Ministère des Richesses Naturelles, Québec
 SERVICE DES GITES MINÉRAUX
 No GM- 18801

DOME EXPLORATION (CANADA) LIMITED

KUSTEN MINES LIMITED
 GALINEE TWP QUEBEC
 SECTION D.D.H. * K-4

CLAIM 143809-3

SCALE	DATE	BY	N.T.S. #	DWG. #
1"=100'	NOV. 14/66	C.H.S.	32-F-12	4