

RECONNAISSANCE MAP OF A PORTION OF THE LAKE ST. JOHN REGION PROVINCE OF QUEBEC

COVERED BY FIELD PARTIES IN SEARCH
 OF MINERAL RESOURCES (SEASON-1923)

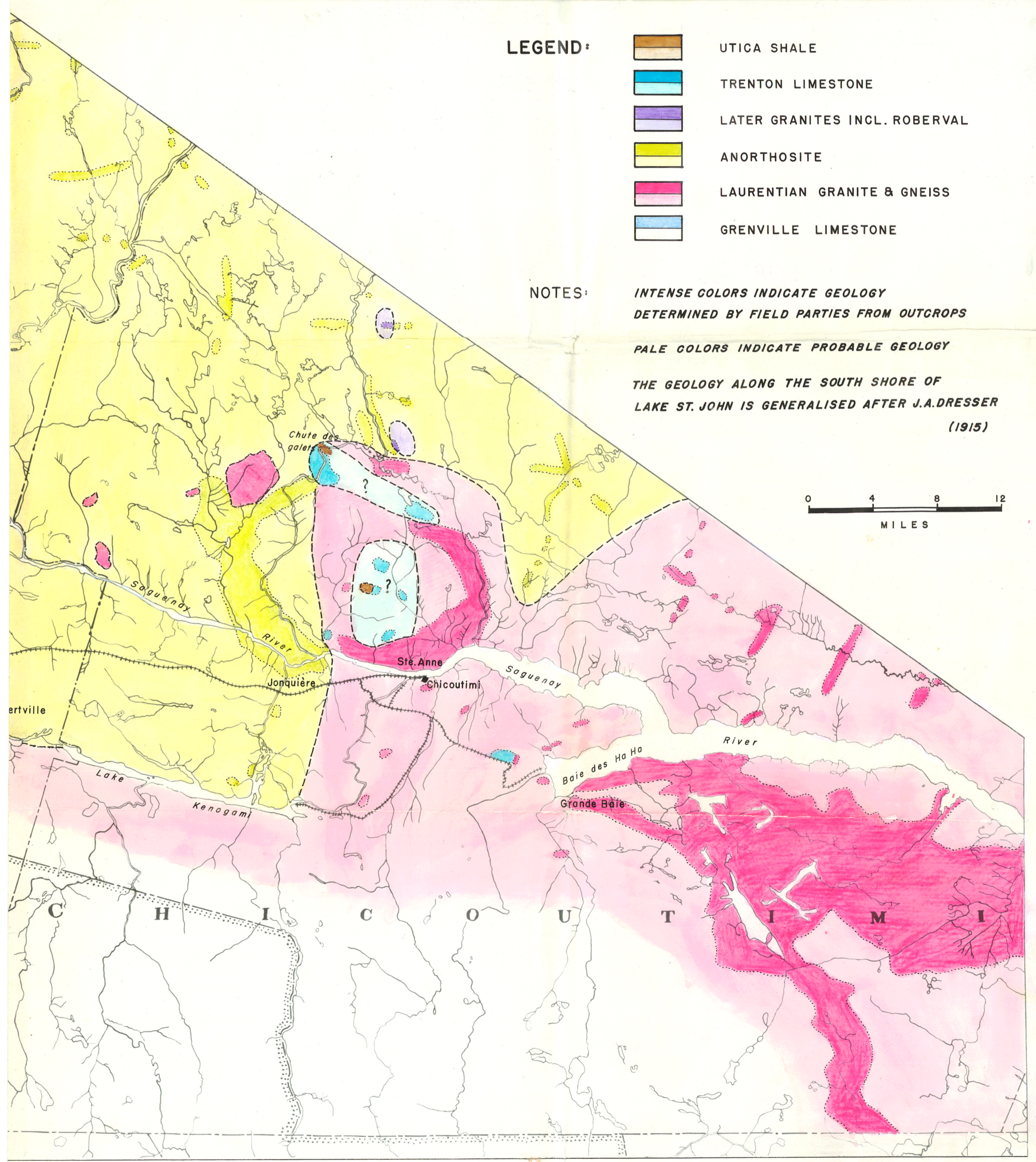
- LEGEND:**
- UTICA SHALE
 - TRENTON LIMESTONE
 - LATER GRANITES INCL. ROBERVAL
 - ANORTHOSITE
 - LAURENTIAN GRANITE & GNEISS
 - GRENVILLE LIMESTONE

NOTES:

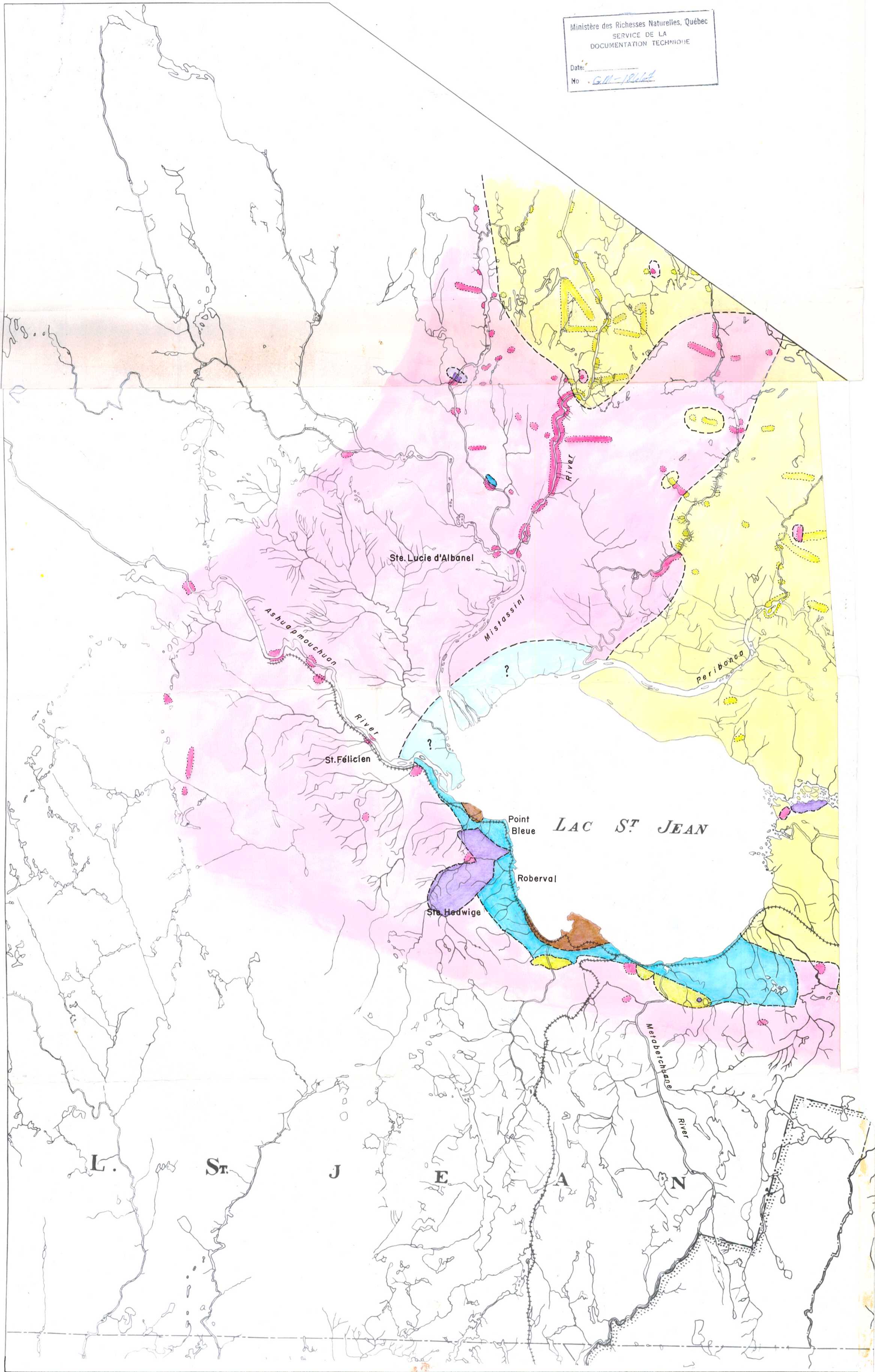
*INTENSE COLORS INDICATE GEOLOGY
 DETERMINED BY FIELD PARTIES FROM OUTCROPS*

PALE COLORS INDICATE PROBABLE GEOLOGY

*THE GEOLOGY ALONG THE SOUTH SHORE OF
 LAKE ST. JOHN IS GENERALISED AFTER J.A.DRESSER
 (1915)*



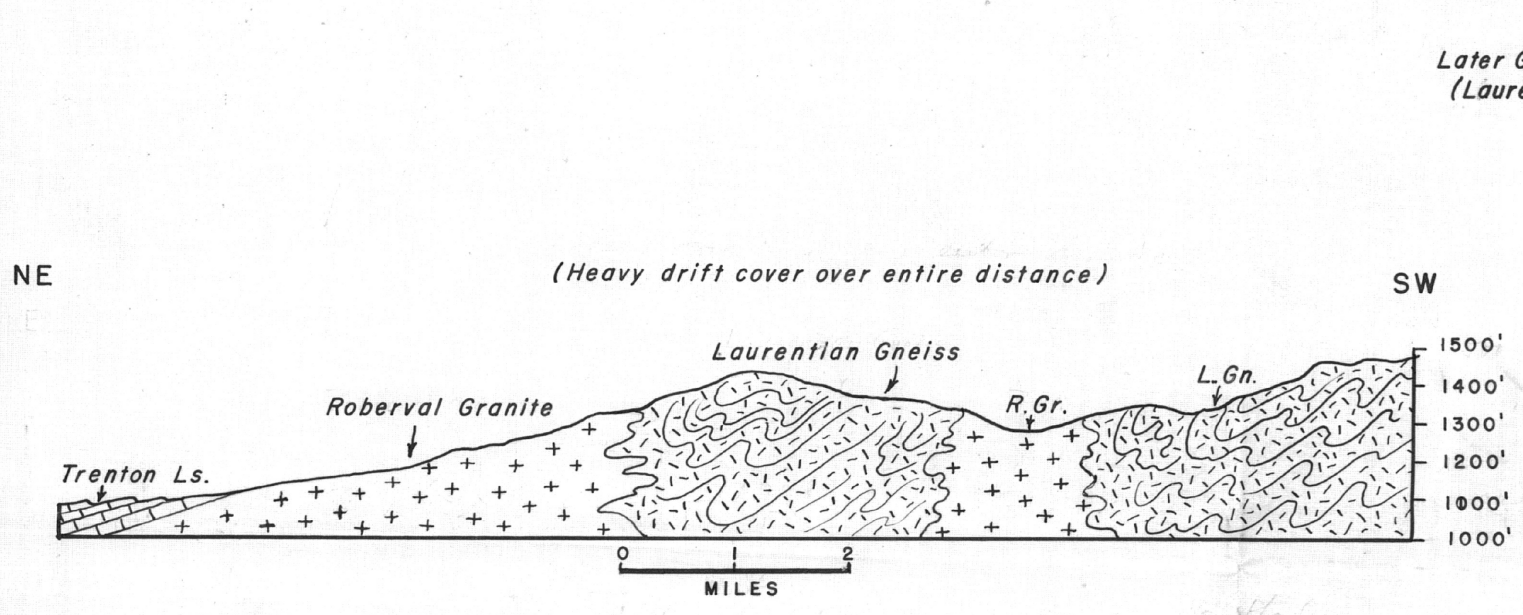
Ministère des Richesses Naturelles, Québec
SERVICE DE LA
DOCUMENTATION TECHNIQUE
Date: _____
No. G.M.-12162



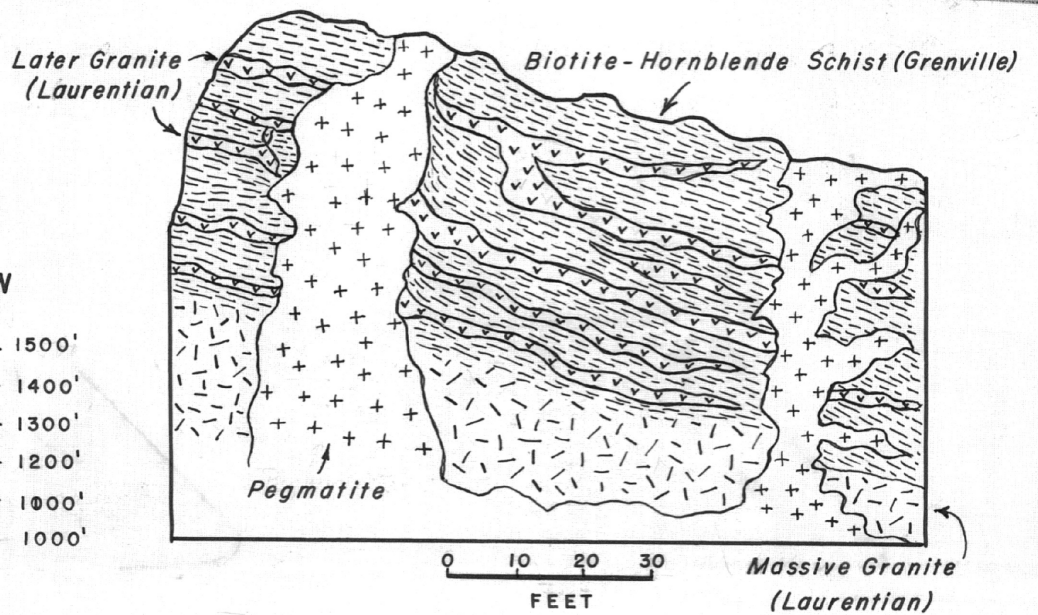
CROSS-SECTIONS

SHOWING TYPICAL RELATIONS OF ROCKS IN THE SAGUENAY RIVER AND LAKE ST. JOHN REGIONS

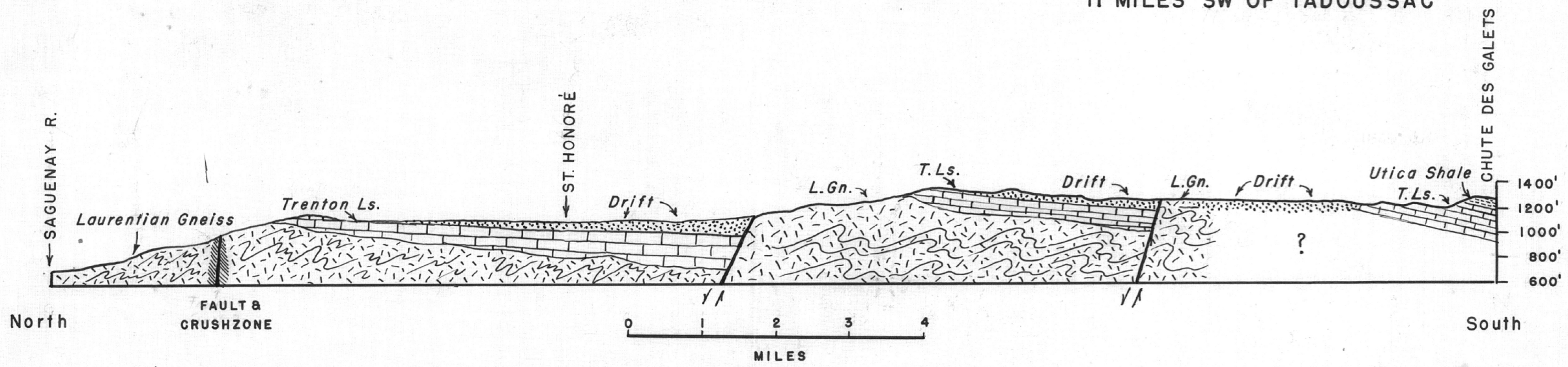
Ministère des Richesses Naturelles, Québec
 SERVICE DE LA DOCUMENTATION TECHNIQUE
 Date: _____
 No *GM-18667*



CROSS-SECTION FROM ROBERVAL TO 2 MILES SW OF STE. HEDWIGE



RELATIONS OF THE ROCKS AT LAC BUTEUX
 11 MILES SW OF TADOUSSAC



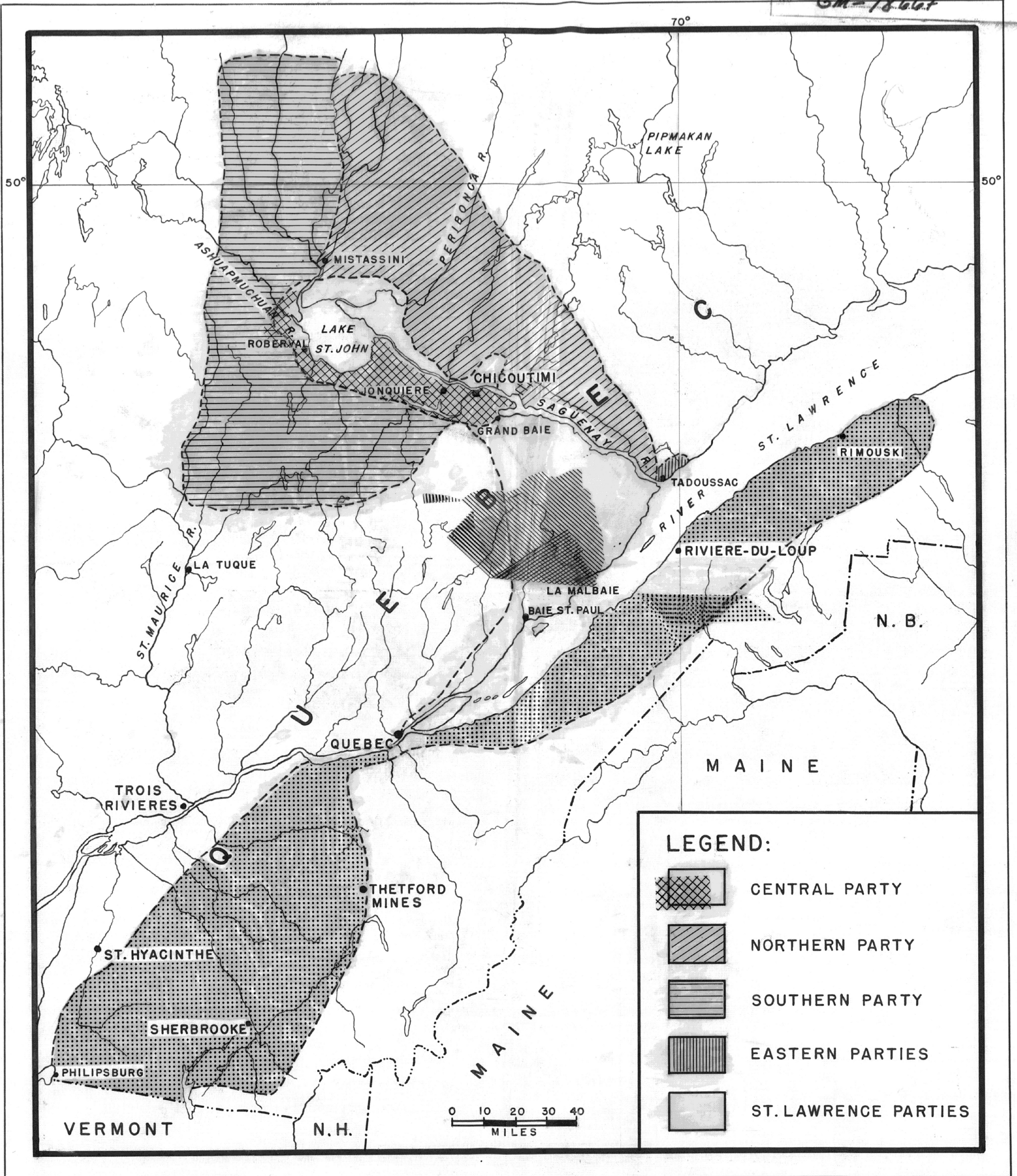
CROSS-SECTION FROM THE SAGUENAY RIVER AT STE. ANNE TO THE CHUTE DES GALETS

KEY MAP

COVERING THE TERRITORY REACHED BY THE DIFFERENT FIELD
RECONNAISSANCE PARTIES OF THE SAGUENAY EXPEDITION-1923.

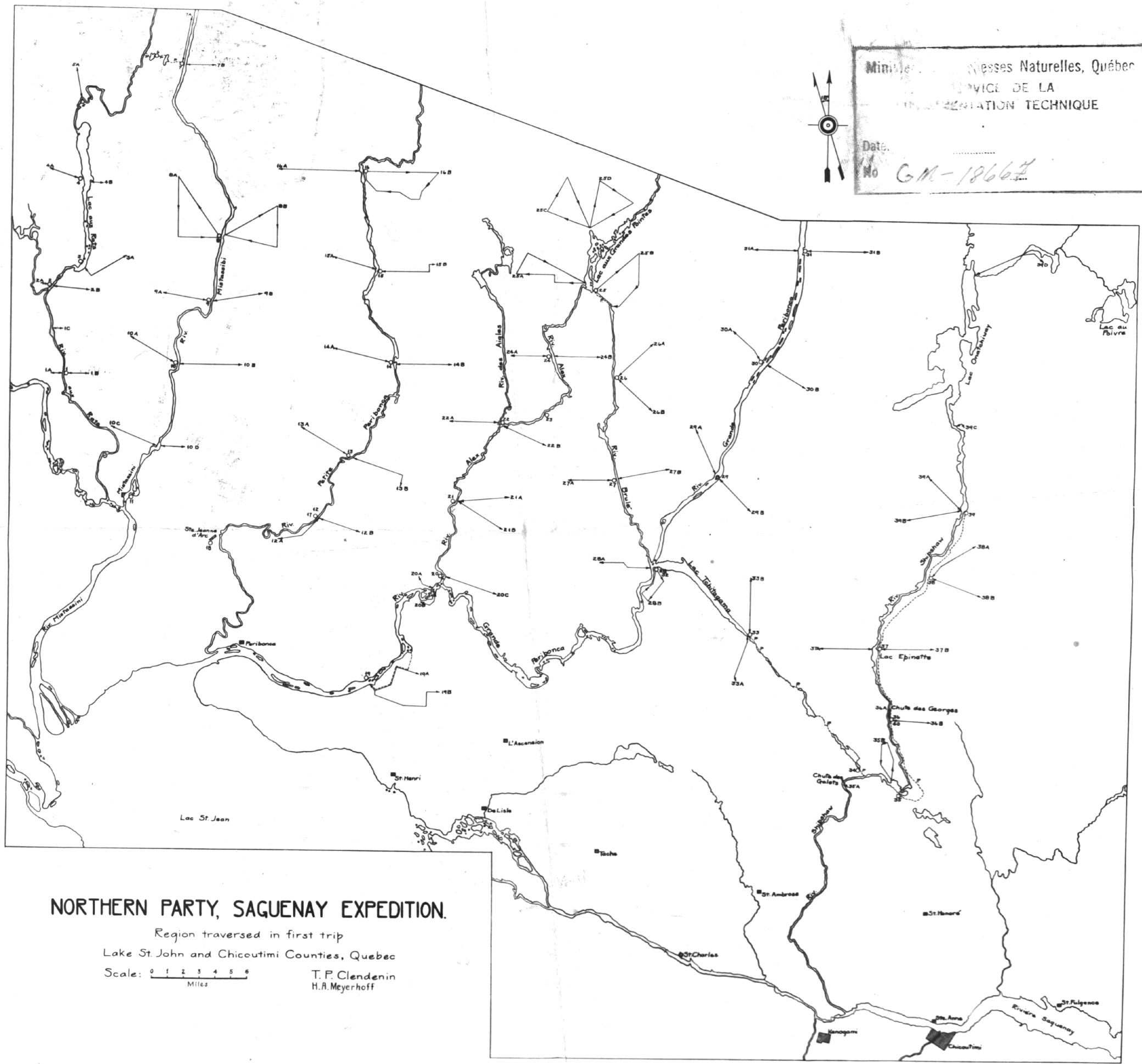
Ministère des Richesses Naturelles, Québec
SERVICE DE LA
DOCUMENTATION TECHNIQUE

Date:
No. *GM-18667*





Ministère des Ressources Naturelles, Québec
SERVICE DE LA
INFORMATION TECHNIQUE
Date:
No GM-18664



NORTHERN PARTY, SAGUENAY EXPEDITION.

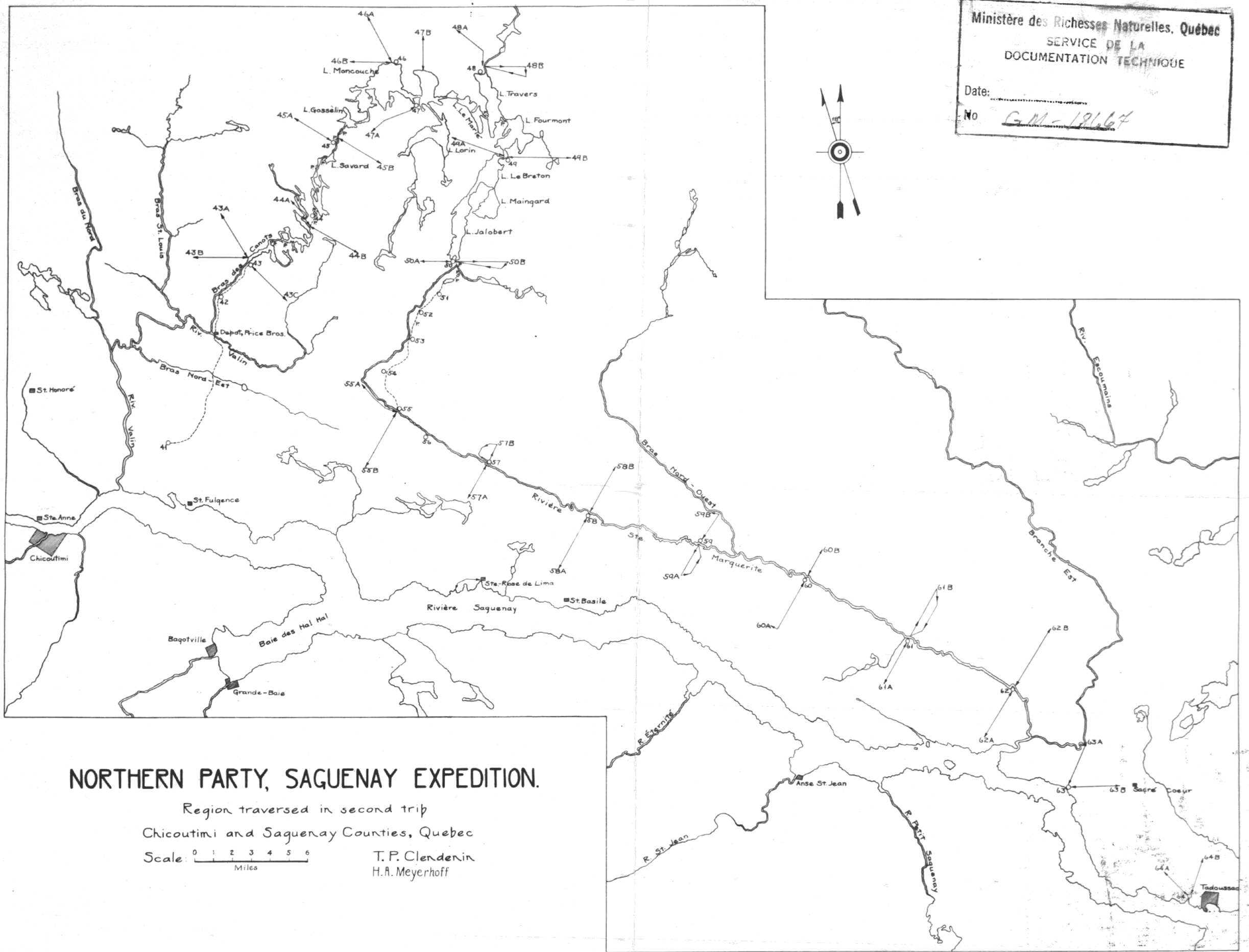
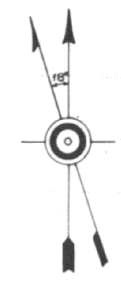
Region traversed in first trip
Lake St. John and Chicoutimi Counties, Quebec

Scale: 0 1 2 3 4 5 6
Miles

T. P. Clendenin
H. A. Meyerhoff

35m

Ministère des Richesses Naturelles, Québec
 SERVICE DE LA
 DOCUMENTATION TECHNIQUE
 Date:
 No GM-19667



NORTHERN PARTY, SAGUENAY EXPEDITION.

Region traversed in second trip
 Chicoutimi and Saguenay Counties, Quebec

Scale 0 1 2 3 4 5 6
 Miles

T. P. Clendenin
 H. A. Meyerhoff