

GM 16857

SAMPLING RECORD, NEMISCAU PROPERTY

Documents complémentaires

Additional Files



Licence



Licence

Cette première page a été ajoutée
au document et ne fait pas partie du
rapport tel que soumis par les auteurs.

Énergie et Ressources
naturelles

Québec 

THE INTERNATIONAL NICKEL CO. OF CANADA, LIMITED

PROPERTY NEMISCAU. AN. 12-20

SAMPLING RECORD

SHEET NO. 2

CO-ORDINATES

HOLE NO. 24093 DEPTH 168.0 ANGLE 45° STRIKE SOUTH ELEVATION 1002.96

~~82.99N~~
82.99N~~834.94W~~
834.94W

DEPTH FEET	FORMATION	SAMPLE NO.	LENGTH FT.	ANALYSIS			LENGTH FEET	PROGRESSIVE TOTALS FEET X PER CENT		
				COPPER %	NICKEL %	CU. & NI. %		COPPER	NICKEL	CU. & NI.
	black, waxy, weak fol. at 45° to core axis. 30-40% sul., heavily diss. to massive Po. & Po replacing? Pyroxene xtals. Vis Pn, minor Py.	F237278	2.6	.61	1.38	1.99	102.6	2.64	17.00	19.63
106.0	MvW Serpentinized peridotite black, waxy, <1% Po, diss.	F237279	3.4	.14	.21	.35	106.0	3.11	17.71	20.82
110.3	MW Serpentinized peridotite Po (15-20%) intergrown with 7 alt'd pyroxene xtals. Vis. Pn. Weak fol. 50° to core axis.	F237280	4.3	.42	.50	.92	110.3	4.92	19.86	24.78
112.4	MS Serpentinized peridotite. Mass. & heavily diss. Po (70-80%) with diss. Pn. Weak fol. 45° to core axis. Common slip surfaces, occ. graphitic.	F237281	2.1	.40	2.05	2.45	112.4	5.76	24.17	29.93
115.0	MvW Serpentinized peridotite as entry to 110.3. Po. 2-3% diss. with vis. Pn. Intersection includes 0.2' mvw (10%) Po, in stringer at 45° to core axis. Rare sl. graphitic partings.	F237282	2.6	.40	.53	.93	115.0	6.80	25.55	32.35
120.0	MvW Serpentinized peridotite <1% Po, Py, minor tr. graphite on slips.	F237283	5.0	.11	.22	.33	120.0	7.35	26.65	34.00
122.0	MvW Serpentinized peridotite as entry to 120'. Po, Py <1%.	F237284	2.0	.05	.26	.31	122.0	7.45	27.17	34.62
125.0	MvW Serpentinized peridotite as entry to 120'. v. rare specks Po, <<1%	F237285	3.0	.07	.25	.32	125.0	7.66	27.92	35.58

THE INTERNATIONAL NICKEL CO. OF CANADA, LIMITED

PROPERTY NEMISCAU - Anomaly 12-20

SAMPLING RECORD

SHEET NO. 1

870' @ 340°
Post 4 CL.5 COPT. 204615HOLE NO. 24095 DEPTH 174.0 ANGLE -45° STRIKE S ELEVATION ~~1000.0~~ 1000.0
~~1000.0~~ # 0/80
0045.09 0003.02 V

CO-ORDINATES

DEPTH FEET	FORMATION	SAMPLE NO.	LENGTH FT.	ANALYSIS			LENGTH FEET	PROGRESSIVE TOTALS		
				COPPER	NICKEL	CU. & NI.		FEET X PER CENT		
				%	%	%		COPPER	NICKEL	CU. & NI.
0.0	Collar									
37.0	Casing overburden									
40.0	Overburden core starts at 40.0'					40.0				
50.0	Serp. perid. green/grey core wkly magnetic	F238049	10.0	.05	.08	.13	50.0	.50	.80	1.30
60.0	Serp. perid. as entry to 50.0'. Partings with minor carb. at 50-60° to core axis	238050	10.0	.03	.08	.11	60.0	.80	1.60	2.40
70.0	Serp. perid. as entry to 50.0'. Light green str. f.g. serp. @ 50° to core axis	238051	10.0	.03	.18	.21	70.0	1.10	3.40	4.50
80.0	Serp. perid. ditto above carb. on partings @ 30 to 50° to core axis	238052	10.0	.03	.17	.20	80.0	1.40	5.10	6.50
86.5	MVVW serp. perid. Pv 1% coating surf. @ 30-50° to core axis. Minor carb., f.g. light green serp.	238053	6.5	.03	.17	.20	86.5	1.60	6.21	7.81
88.8	Serp. perid. vuggy with minor carb. Grey to light green core surf. with alt'n. to lt. green mud & serp. from 88.6-88.8	238054	2.3	.04	.14	.18	88.8	1.69	6.53	8.22
95.4	Aplite f.g. grey with few rock fragments @ upper contact & pink feldspar phenocrysts	238055	6.6	.05	.03	.08	95.4	2.02	6.73	8.75
102.0	Serp. perid. black, minor carb. on partings at 30° to core axis	238056	6.6	.06	.19	.25	102.0	2.41	7.98	10.39

THE INTERNATIONAL NICKEL CO. OF CANADA, LIMITED

PROPERTY NEMISCAU - ANOMALY 12-20

SAMPLING RECORD

SHEET NO. 4

HOLE NO. 24095 DEPTH 174.0' ANGLE -45° STRIKE S ELEVATION 1000.0'

CO-ORDINATES
~~N 45.09 W~~ ~~03.02 W~~
 N 45.09 W 03.02 W

DEPTH FEET	FORMATION	SAMPLE NO.	LENGTH FT.	ANALYSIS			LENGTH FEET	PROGRESSIVE TOTALS		
				COPPER %	NICKEL %	CU. & NI. %		FEET X PER CENT		
LOG SUMMARY										
0.0	Collar									
37.0	Casing									
80.0	Serpentinized perid.									
86.5	MVW - Serp. perid.									
88.8	Serpentinized perid.									
95.4	Aplite									
107.7	Serp. perid.									
109.1	MVW - Serp. perid.									
110.0	Aplite									
112.2	MVW - Serp. perid.									
121.0	Aplite									
124.0	Ground core									
162.4	Serp. perid.									
167.8	Qte.									
174.0	Gs.									
END OF HOLE										
Size of Hole: EX										
Hole started Jan. 27/64										
Hole completed Jan. 31/64										
Drilled by Canico Winkie Drill										
EX casing left in hole										
Hole not plugged										
Logged by G. J. Candy										

PROPERTY *NEMISCAU AN. 12-20*

SAMPLING RECORD

SHEET NO. 4

CO-ORDINATES

HOLE NO. 24097 DEPTH 184 ANGLE -50° STRIKE SOUTH ELEVATION 1010.11

82° 20' N
18° 00' W
1605.75 W

DEPTH FEET	FORMATION	SAMPLE NO.	LENGTH FT.	ANALYSIS			LENGTH FEET	PROGRESSIVE TOTALS FEET X PER CENT		
				COPPER %	NICKEL %	CU. & NI. %		COPPER	NICKEL	CU. & NI.
<u>LOG SUMMARY</u>										
0.0	Collar									
45.0	Casing									
49.7	Peridotite									
63.6	Metasediment									
91.4	Peridotite									
121.6	MvW - MW Serpentinized Peridotite									
149.2	Peridotite									
153.5	Aplite									
184.0	Peridotite									
184.0	End of Hole									
	Size of Hole: Ex									
	Started: Feb. 4 1964									
	Completed: Feb. 6 1964									
	Drilled by Canica									
	Winkie Drill									
	Logged by G.J. Candy									

THE INTERNATIONAL NICKEL CO. OF CANADA, LIMITED

SAMPLING RECORD

SHEET NO. 1

PROPERTY Nemiscau Area: AN.12-20.

Post 3, Claim 4, Cent. 204615 is 656' at 207°.

CO-ORDINATES

HOLE NO. 25361 DEPTH 545' ANGLE -45° STRIKE SOUTH ELEVATION

3+02 N 12+00 W

DEPTH FEET	FORMATION	SAMPLE NO.	LENGTH FT.	ANALYSIS			LENGTH FEET	PROGRESSIVE TOTALS		
				COPPER	NICKEL	CU. & NI.		FEET X PER CENT		
				%	%	%		COPPER	NICKEL	CU. & NI.
0.0	Collar									
46.0	Casing: 0-19' boulders 20-46' sand; core starts at 46.0'									
88.2	Gneiss, m.g. grey dtc. felds. with 5-15% chlor. bio. Scatt. garnets. Fol 50°-60° to core axis.									
90.5	Greenstone, f.g. chlor- amp-felds rock fol. 60° to core axis. Weak nematoblastic texture									
116.9	Gneiss as entry to 88.2' sericitic.					116.9				
121.1	MvW Greenstone as entry to 90.5. Po, Py. diss. < 1% 80-90% bio dtc. 121'	F238930	4.2	.03	.02	.05	121.1	.13	.08	.21
122.1	Biotite schist, occ. garnets to 1/2". Fol. 60° to core axis.		1.0				122.1			
143.0	Gneiss as entry to 116.9		20.9				143.0			
144.5	Gneiss as entry to 116.9	F238931	1.5	.01	.01	.02	144.5	.14	.10	.24
145.5	MvW Gneiss as entry to 116.9. 8-10% Po. in str's with 1-2% Py.	F238932	1.0	.02	.02	.04	145.5	.16	.12	.28
147.0	Gneiss as entry to 116.9	F238933	1.5	Nil	.01	.01	147.0	.16	.13	.29
171.8	Gneiss as entry to 116.9									
174.4	Greenstone as entry to 90.5									
214.0	Gneiss as entry to 116.9									
229.3	Gneiss as entry to 88.2 with short intersection amp and chloritized amp at 70°-80° to core axis.						229.3			
235.9	MvW Greenstone. Po. diss. < 1%	F238934	6.6	.03	.02	.05	235.9	.36	.27	.63

THE INTERNATIONAL NICKEL CO. OF CANADA, LIMITED

SAMPLING RECORD

SHEET NO. 3

PROPERTY Nemiscou Area: AN 12-20

Post 3, Claim 4, Cert 204615 is 656' at 207°.

CO-ORDINATES

HOLE NO. 25361 DEPTH 545' ANGLE -45° STRIKE SOUTH ELEVATION

3+02 N

12+00 W

DEPTH FEET	FORMATION	SAMPLE NO.	LENGTH FT.	ANALYSIS			LENGTH FEET	PROGRESSIVE TOTALS FEET X PER CENT		
				COPPER	NICKEL	CU. & NI.		COPPER	NICKEL	CU. & NI.
				%	%	%				
	black waxy, str's to 3mm									
336.0	cross fibre asbestos Serpentinized perid.	F238945	10.0	.02	.18	.20	330.8	2.86	8.68	11.54
347.0	black waxy Aplite, greenish-grey	F238946	5.2	.04	.20	.24	336.0	3.07	9.72	12.79
357.0	Diab. str's veinlets sugary texture, fg. Serpentinized perid.	N5	11.0				347.0			
361.9	black waxy Mvw Serpentinized perid.	F238947	10.0	.05	.15	.20	357.0	3.57	11.22	14.79
362.6	diss. Po. < 1%. Asb. str's	F238948	4.9	.09	.11	.20	361.9	4.01	11.76	15.77
363.1	Mass. Po. 5-7% diss. Pn. MW Serpentinized perid.	F238949	0.7	.30	2.11	2.41	362.6	4.22	13.24	17.46
363.6	10-15% Po. in str. with Pn. at 20° to core axis and diss.	F238950	0.5	.10	.58	.68	363.1	4.27	13.53	17.80
364.8	Mass. Po. ~ 5-7% diss. Pn. 2-3% diss. Cp. M Serpentinized perid.	F238951	0.5	.56	2.23	2.79	363.6	4.55	14.64	19.19
366.6	30-35% Po. heavily diss and in str's with blebs Pn. MW Serpentinized perid.	F238952	1.2	.11	.86	.97	364.8	4.68	15.68	20.36
367.2	10-12% diss. Po. and Po. bleb at 366.6	F238953	1.8	.18	.22	.40	366.6	5.01	16.07	21.08
368.3	Mass. sulph. 60-70% Po. with diss. Pn; 30-40% Cp. MW Serpentinized perid.	F238954	0.6	5.00	.45	5.45	367.2	8.01	16.34	24.35
370.5	10-12% Po. in blebs and str's. Blebs Pn. in str's.	F238955	1.1	.17	.48	.65	368.3	8.20	16.87	25.07
371.5	Mvw Serpentinized perid. Po. < 1% diss.	F238956	2.2	.06	.13	.19	370.5	8.33	17.16	25.49
	1' seam mass. sulph. (50% Cp. 50% Po. with diss. Pn.) and diss. Po. Total 15-20%	F238957	1.0	2.67	.94	3.61	371.5	11.00	18.10	29.10

THE INTERNATIONAL NICKEL CO. OF CANADA, LIMITED

PROPERTY Nemiscou Area: AN.12-20.

SAMPLING RECORD

SHEET NO. 5.

Post 3, Claim 4, Cent. 204615 is 656' at 207°

CO-ORDINATES

HOLE NO. 25361 DEPTH 545' ANGLE -45° STRIKE SOUTH ELEVATION

3+02N

12+00W

DEPTH FEET	FORMATION	SAMPLE NO.	LENGTH FT.	ANALYSIS			LENGTH FEET	PROGRESSIVE TOTALS		
				COPPER	NICKEL	CU. & NI.		FEET X PER CENT		
				%	%	%		COPPER	NICKEL	CU. & NI.
	as previous entry, black, waxy.	F238965	3.2	.01	.19	.20	440.0	12.05	26.87	38.92
450.0	Serpentinized perid., lt. grey; core magnetic Carbonate veining.	F238966	10.0	.01	.19	.20	450.0	12.15	28.77	40.92
452.1	Serpentinized perid. as previous entry	F238967	2.1	.02	.21	.23	452.1	12.19	29.21	41.40
457.4	Amphibolite, lt. to dark green as entry to 285.5	F238968	5.3	.01	.15	.16	457.4	12.24	30.00	42.24
461.5	MuvW Amphibolite: variable rock unit, with f.g. lt. green to colorless felted amphiboles and serpentine rosettes (? after olivine) Incs. thin (to 2mm) bands (?) dark amphibole at 45°-60° to core axis. Diss. Po, Py and thin coatings Py, total 1%	F238969	4.1	.03	.54	.57	461.5	12.37	32.22	44.59
479.0	(?) Metasediment. Fine grained granoblastic biotite-(?) cordierite - feldspar rock, fol. 60°-70° to core axis									
545.0	Felsite, very fine grained uniform textured grey/green rock.									
545.0	End of Hole.									
	Sampler checked - filled. Min. 12/16/64									

Size of Hole: AX

Started: Feb. 24, 1964

Completed: Feb. 27, 1964

Drilled by Morissette Diamond Drilling Ltd

Casing not pulled

Hole sealed with wooden plug

Acid Tests: 56' : 45 1/2°

260' : 39 1/2°

525' : 36 1/2°

Logged by G. J. Candy.

THE INTERNATIONAL NICKEL CO. OF CANADA, LIMITED

SAMPLING RECORD

SHEET NO. 1

PROPERTY Nemiscau: An. 12-20
Post 4 Claim 1 Cent. 204617 is 65 ft. West.

CO-ORDINATES

HOLE NO. 25362 DEPTH 460 ft ANGLE -45° STRIKE SOUTH ELEVATION 00+17N 44+00W

DEPTH FEET	FORMATION	SAMPLE NO.	LENGTH FT.	ANALYSIS			LENGTH FEET	PROGRESSIVE TOTALS		
				COPPER	NICKEL	CU. & NI.		FEET X PER CENT		
				%	%	%		COPPER	NICKEL	CU. & NI.
0.0	Collar									
26.0	Casing: sand and gravel core starts at 26.0'									
36.0	Amphibolite, green, m.g. actinolite rock 25' pl.	F238970	10.0	.03	.01	.04				
46.0	Amphibolite as previous entry.	F238971	10.0	.02	.01	.03				
56.0	Amphibolite as entry to 36'	F238972	10.0	.04	.02	.06				
66.0	Amphibolite as entry to 36'	F238973	10.0	.01	.01	.02				
76.0	Amphibolite as entry to 36'	F238974	10.0	.02	.01	.03				
86.0	Amphibolite as entry to 36' with siliceous band at 78'	F238975	10.0	.07	.02	.09				
90.0	Amphibolite as entry to 36' chloritic partings present	F238976	4.0	.03	.02	.05				
94.2	Serp. perid. lt. to dark grey; chlor. partings. Con. magnetic	F238977	4.2	.01	.09	.10				
104.2	Serp. perid.; black, waxy. Asbestos seams at 45°- 50° to core axis	F238978	10.0	.03	.20	.23				
114.2	Serp. perid.; black waxy Green, f.g. granular serp. on fracture surfaces	F238979	10.0	.02	.20	.22				
124.2	Serp. perid.; black, waxy; thin str's asbestos at 50° to 60° to core axis	F238980	10.0	.03	.21	.24				
129.4	Serp. perid., black, waxy.	F238981	5.2	.04	.20	.24				
133.7	Aplite; f.g. greenish color. Lower contact at 45° to core axis									
143.7	Serp. perid. as entry to 114.2	F238982	10.0	.01	.20	.21				
153.7	Serp. perid., black, waxy. Few thin str's asbestos at 30° to 45° to core axis	F238983	10.0	.02	.22	.24				

THE INTERNATIONAL NICKEL CO. OF CANADA, LIMITED

PROPERTY *Nemiscou AN. 12-20*
Post 4 Claim 1 Cert 204617 is 65 ft West.

SAMPLING RECORD

SHEET NO. 2HOLE NO. 25362 DEPTH 400 ft ANGLE -45° STRIKE SOUTH ELEVATION

CO-ORDINATES

00+17 N 44+00 W

DEPTH FEET	FORMATION	SAMPLE NO.	LENGTH FT.	ANALYSIS			LENGTH FEET	PROGRESSIVE TOTALS FEET X PER CENT		
				COPPER	NICKEL	CU. & NI.		COPPER	NICKEL	CU. & NI.
				%	%	%				
161.8	<i>Serp. perid., black, waxy, 3mm seam cross fibre asbestos in lower 1 ft of intersection</i>	F238984	8.1	.01	.12	.13				
163.4	<i>? Anthophyllite-chlorite schist</i>	F238985	1.6	.02	.07	.09				
173.4	<i>Serp. perid., black, waxy, str's to 4mm. cross fibre asbestos at 50° to 60° to core axis</i>	F238986	10.0	Nil	.17	.17				
183.4	<i>Serp. perid., black, waxy, few str's to 2mm. cross fibre asbestos 70° to 80° to core axis</i>	F238987	10.0	Nil	.20	.20				
190.6	<i>Serp. perid. as previous entry</i>	F238988	7.2	Nil	.19	.19				
197.6	<i>Serp. perid. as entry to 94.2</i>	F238989	7.0	.01	.21	.22				
207.6	<i>Serp. perid. as entry to 183.4</i>	F238990	10.0							
217.6	<i>Serp. perid. as entry to 183.4</i>	F238991	10.0							
227.6	<i>Serp. perid. as entry to 183.4</i>	F238992	10.0							
237.6	<i>Serp. perid. as entry to 183.4</i>	F238993	10.0							
247.6	<i>Serp. perid. as entry to 183.4</i>	F238994	10.0							
253.4	<i>Serp. perid., black, waxy, seams to 4mm cross fibre asbestos</i>	F238995	5.8							
266.0	<i>Aplite as entry to 133.7 with intersection c.g. quartz-diopside rock</i>	F238996								
269.0	<i>Serp. perid., black, waxy with str's to 5mm. cross fibre asbestos, 70° to 80° to core axis</i>	F238996	3.0							

THESE SAMPLES
 CONTAINED IN
 CANICO SAMPLE # 1
 Sent to Analytical Dept of
 Natural Resources, Dept
 of Ottawa, with their

THE INTERNATIONAL NICKEL CO. OF CANADA, LIMITED

PROPERTY Nemiscau An. 12-20

Post 4 Claim 1 Cont. 204617 to 85 ft. West.

SAMPLING RECORD

SHEET NO. 3

CO-ORDINATES

HOLE NO. 25362 DEPTH 460 ft. ANGLE -45° STRIKE SOUTH ELEVATION

00+17N 44+00W

DEPTH FEET	FORMATION	SAMPLE NO.	LENGTH FT.	ANALYSIS			LENGTH FEET	PROGRESSIVE TOTALS FEET X PER CENT		
				COPPER %	NICKEL %	CU. & NI. %		COPPER	NICKEL	CU. & NI.
279.0	Serp. perid., dark green to black, waxy. ? olivine rich peridotite	F238997	10.0							
289.0	Serp. perid. as entry to 279.0	F238998	10.0							
291.0	Serp. perid. as entry to 279.0, with asbestos str's at 50° to core axis.	F238999	2.0							
298.3	Ultrabasic rock, v. lt. grey talc serpentine rock, with rosettes colorless ? serp. common. Partly magnetic.	F225601	7.3	Nil	.07	.07				
301.5	MuvW ??? Skarn: granoblastic quartz - feldspar rock with ± lt. green amp, granular green ? pyroxene, fine grained; scattered garnets and minor magnetite Specks diss. Pe, Py < 1%	F225602	3.2	.03	.28	.31	Av. .002	Total .002		
310.0	Massive ??? Chromite: brown to black resinous crystalline to granular mineral.	F239000	8.5							
379.8	??? Skarn as to 301.5 and with diss. grains mineral as to 310.0, and ? chrome diopside or ? uvarovite in rare thin streaks at 70° to 80° to core axis.									
460.0	Gneiss: dark grey f.g. qtz - bio - felds. gneiss, fol									

THESE SAMPLES
CONTAINED IN
CANNED SAMPLES # 2
SENT TO SUBCOM. DEPT. OF
NATURAL RESOURCES FOR
ASBESTOS ANAL. TEST.

Total trace
~~0.002~~
Cr₂O₃ 36.77

THE INTERNATIONAL NICKEL CO. OF CANADA, LIMITED

PROPERTY Nemiscau Area. AN 12-20 14-1B **SAMPLING RECORD**SHEET NO. 1

Post 3, Claim 2, Cent. 209237 is 650' at 45°

CO-ORDINATES

HOLE NO. 25363 DEPTH 286.0 ANGLE -45° STRIKE SOUTH ELEVATION5+49 S 66+48W

DEPTH FEET	FORMATION	SAMPLE NO.	LENGTH FT.	ANALYSIS			LENGTH FEET	PROGRESSIVE TOTALS			Total Fm's
				COPPER	NICKEL	CU. & NI.		FEET X PER CENT			
				%	%	%		COPPER	NICKEL	CU. & NI.	
0.0	Collar										
14.0	Casing: sand & boulder core starts at 14.0'										
54.2	Crystalline schist: biotite-qtz-felds. sch. with strong fol. at 60° to core axis, acc. chler, garn										
70.0	Iron formation Cryst. sch. as prev. entry, more chloritic and with minor amp. Bands magnetite to 1/2" scatt. total < 5%										
151.3	Biotite gneiss with short intersections crystalline schist as entry to 54.2										
162.3	Metasediment: lt. to dark grey, f.g. qtz- felds-rock (arg.)										
167.3	MvW Metasediment as previous entry. Qtz- carb veins to 1/8" at 70° to 80° to core axis										
175.3	(sub-bol. "Speck Cpl. (v.)) MvW Metasediment as previous entry. 10-12% Po. in blebs & str's	F225603	5.0	.01	.01	.02					Trace
180.0	MvW Metasediment as entry to 167.3. Po. diss < 1%	F225604	8.0	.01	.02	.03					"
198.0	Biotite gneiss as entry to 151.3	F225605	4.7	.01	.02	.03					"
200.0	MvW Biotite gneiss. Diss. Po. < 1%	F225606	2.0	.01	.03	.04					"

THE INTERNATIONAL NICKEL CO. OF CANADA, LIMITED

SAMPLING RECORD

SHEET NO. 2PROPERTY *Nemiscou An. 12-20.**Post 1, Claim 2, Cert. 204615 is 1200 ft. north.*

CO-ORDINATES

HOLE NO. 25365 DEPTH 532' ANGLE -45° STRIKE SOUTH ELEVATION _____1487 N 36400W

DEPTH FEET	FORMATION	SAMPLE NO.	LENGTH FT.	ANALYSIS			LENGTH FEET	PROGRESSIVE TOTALS		
				COPPER	NICKEL	CU. & NI.		FEET X PER CENT		
				%	%	%		COPPER	NICKEL	CU. & NI.
	161.0'	F225655	10.0	Nil	.01	.01			3.64	4.95
195.0	Amphibolite: m.g. actinolite crystals	F225656	14.0	Nil	.03	.03			4.06	5.37
195.8	Ground Core		0.8	Nil	.03	.03			4.08	5.39
197.5	Amphibolite: fg. to m.g. actinolite, minor red- brown chlorite	F225657	1.7	Nil	.03	.03			4.14	5.45
198.5	Ground Core		1.0	Nil	.03	.03			4.17	5.48
208.5	Talc-amp.-sch. as entry to 50.0. Chloritic fractures at low angles to core axis	F225658	10.0	Nil	.02	.02			4.37	5.68
216.6	Talc-amp.-sch. as entry to 208.5	F225659	8.1	Nil	.04	.04			4.69	6.00
226.6	Serp.-perid: lt. grey; core has mottled appearance at 220'	F225660	10.0	Nil	.15	.15			6.19	7.50
236.0	Serp.-perid. as entry to 226.6	F225661	9.4	Nil	.17	.17			7.79	9.10
246.0	Serp.-perid. as entry to 226.6	F225662	10.0	Nil	.17	.17			9.49	10.80
256.0	Serp.-perid. as entry to 226.6	F225663	10.0	Nil	.17	.17			11.19	12.50
261.4	Serp.-perid. as entry to 226.6, with minor amp	F225664	5.4	Nil	.13	.13			11.89	13.20
272.0	Serp.-perid: black; core strongly magnetic	F225665	10.6	Nil	.24	.24			14.43	15.74
282.0	Serp.-perid. as entry to 272.0: short sections black, waxy	F225666	10.0	Nil	.23	.23			16.73	18.04
292.0	Serp.-perid. as entry to 282.0	F225667	10.0	Nil	.16	.16			18.33	19.64
302.0	Serp.-perid. as entry to 282.0	F225668	10.0	Nil	.19	.19			20.23	21.54
312.0	Serp.-perid. as entry to 282.0	F225669	10.0	Nil	.18	.18		1.31	22.03	23.34

THE INTERNATIONAL NICKEL CO. OF CANADA, LIMITED

PROPERTY *Nemiscou Area: AN 12-20*
Post 1, Claim 4, Cert. 204615 is 1020' at 33°

SAMPLING RECORD

SHEET NO. 1HOLE NO. 25366 DEPTH 632 ANGLE -55° STRIKE SOUTH ELEVATION _____CO-ORDINATES
3+28N 8+00W

DEPTH FEET	FORMATION	SAMPLE NO.	LENGTH FT.	ANALYSIS			LENGTH FEET	PROGRESSIVE TOTALS		
				COPPER	NICKEL	CU. & NI.		FEET X PER CENT		
				%	%	%		COPPER	NICKEL	CU. & NI.
0.0	Collar									
4.0	Casing: boulders and sand: core starts at 38.0'									
75.5	Gneiss: bio-qtz.-felds: sercitic.									
80.5	Greenstone: felds.-amp gneiss. fol. 50° to core axis									
100.6	Gneiss as entry to 75.5									
109.2	Greenstone as entry to 80.5									
150.0	Gneiss as entry to 75.5									
172.7	Amp-felds-gneiss; f.g. to m.g. ? metagabbro.									
253.0	Gneiss as entry to 75.5; granitic. Hole cemented @ 200'									
272.0	Gneiss: f.g. to m.g. bio- qtz-felds. fol. 35°-40° to core axis									
315.6	Gneiss as entry to 253.0									
325.6	Amphibolite: minor felds in mg actinolite rock.	F225706	10.0	.04	.06	.10	.40	.60	1.00	
335.6	Amphibolite as entry to 325.6 talcase	F225707	10.0	Nil	.06	.06		1.20	1.60	
341.2	Amphibolite as entry to 335.6 - few specks Po, Py.	F225708	5.6	Nil	.08	.08		1.65	2.05	
347.7	Pegmatite: white eg. to mg. qtz.-felds.		6.5							
357.7	Talc-amp-sch.: core weakly magnetic.	F225709	10.0	.01	.07	.08	.50	2.35	2.85	
367.7	Talc-amp.-sch. as entry to 357.7	F225710	10.0	Nil	.07	.07		3.05	3.55	
377.7	Talc-amp.-sch. as entry to 357.7	F225711	10.0	.02	.04	.06	.70	3.45	4.15	
385.0	Talc-amp.-sch. as entry to 357.7	F225712	7.3	.02	.02	.04	.85	3.59	4.44	
395.0	Amphibolite: massive actinolite rock.	F225713	10.0	Nil	.01	.01		3.69	4.54	
405.1	Amphibolite: as entry to 395.0	F225714	10.1	Nil	.03	.03		4.00	4.85	

THE INTERNATIONAL NICKEL CO. OF CANADA, LIMITED

PROPERTY *Nemiscau Area: AN. 12-20*

SAMPLING RECORD

SHEET NO. 4*Post 1, Claim 4, Cert. 204615 is 1020' at 33°*

CO-ORDINATES

HOLE NO. 25366 DEPTH 632 ANGLE -55° STRIKE SOUTH ELEVATION _____3+82 N 8+00 W

DEPTH FEET	FORMATION	SAMPLE NO.	LENGTH FT.	ANALYSIS			LENGTH FEET	PROGRESSIVE TOTALS FEET X PER CENT		
				COPPER %	NICKEL %	CU. & NI. %		COPPER	NICKEL	CU. & NI.
<u>LOG SUMMARY</u>										
0-0	Collar									
40-0	Casing									
75-5	Gneiss									
80-5	Greenstone									
100-6	Gneiss									
103-2	Greenstone									
150-0	Gneiss									
172-7	Amp-feldr. gneiss.									
315-6	Gneiss									
405-1	Amphibolite									
409-8	Serp. perid.									
431-0	M to Mwwk Serp. perid.									
595-0	Serp. perid.									
632-0	Gneiss.									
632-0	End of Hole									
Size of Hole: Ax										
Started: March 24 1964										
Completed: April 2 1964										
Drilled by Morissette										
Diamond Drilling Ltd.										
Casing not pulled										
Hole sealed with wooden plug.										
Acid Tests: 60': 54°										
300': 52½°										
625': 51°										
Logged by G.J. Candy										

THE INTERNATIONAL NICKEL CO. OF CANADA, LIMITED

SAMPLING RECORD

SHEET NO. 1

PROPERTY Nemiscau Area: AN. 12.20.

Post 1, Claim 4, Cent. 204615 is 74.0' at 16°

CO-ORDINATES

HOLE NO. 25367 DEPTH 690' ANGLE -55° STRIKE SOUTH ELEVATION

3+47N 4+00W

DEPTH FEET	FORMATION	SAMPLE NO.	LENGTH FT.	ANALYSIS			LENGTH FEET	PROGRESSIVE TOTALS		
				COPPER	NICKEL	CU. & NI.		FEET X PER CENT		
				%	%	%		COPPER	NICKEL	CU. & NI.
0.0	Collar									
44.0	Casing: boulders and sand:- core starts at 44.0'									
48.3	Greenstone: bio-amp-felds gneiss fol. 50° to core axis									
146.5	Gneiss: mg. bio-gtz-felds minor chlc.: granitic									
159.0	Greenstone: mg. felds-amp fol. 45° to core axis									
170.3	Gneiss as entry to 146.5									
180.0	Greenstone as entry to 159.0									
291.5	Gneiss as entry to 146.5									
303.0	Greenstone as entry to 159.0									
381.4	Gneiss as entry to 146.5: fg miscellaneous at 380-381.4.									
400.0	Talc-amp-sch: lt. to med. grey: core weakly magnetic	F225772	18.6	Nil	.07	.07		1.30	1.30	
415.0	Talc-amp-sch as entry to 400'	F225773	15.0	Nil	.10	.10		2.80	2.80	
425.0	Talc-amp-sch as entry to 400'	F225774	10.0	.02	.13	.15	.20	4.10	4.30	
435.0	Talc-amp-sch as entry to 400'	F225775	10.0	.02	.07	.09	.40	4.80	5.20	
445.0	Amphibolite: fg. to mg. green actinolite rock	F225741	10.0	Nil	.04	.04		5.20	5.60	
451.0	Amphibolite as entry to 445'	F225762	6.0	.01	.01	.02	.46	5.26	5.72	
453.0	Ground Core		2.0	.01	.02	.03	.48	5.30	5.78	
465.2	Amphibolite as entry to 445'	F225743	12.2	Nil	.03	.03		5.67	6.15	
472.3	Serp. perid: black, minor asbestos. Few specks Po.	F225744	7.1	.01	.20	.21	.55	7.09	7.64	
473.5	Aplite		1.2							
476.5	MW Serp. perid: black, 15-20% Po in blebs with minor Cp ($\approx 1\%$) 0.5% Ni	F225745	3.0	.07	.56	.63	.76	8.77	9.53	
478.1	Mass. Po.: blebs to $\frac{1}{8}$ "? Po. Ni 2%	F225746	1.6	.08	2.42	2.50	.89	12.64	13.53	
480.7	MW Pegmatite: mg. gtz-felds white: veinlets Po. and diss. Po.: 4-5% Cp. diss. 1-2% Po. diss. $\leq 1\%$	F225747	2.6	.48	.26	.74	2.14	13.32	15.46	

THE INTERNATIONAL NICKEL CO. OF CANADA, LIMITED

PROPERTY NEMISCAU AN. 12-20

SAMPLING RECORD

SHEET NO. 1

Collar is 900' S of Post 1, C.I. 5 - 204615

HOLE NO. 25368 DEPTH 540' ANGLE -45° STRIKE S ELEVATION _____CO-ORDINATES
1+78N 8+00E

DEPTH FEET	FORMATION	SAMPLE NO.	LENGTH FT.	ANALYSIS			LENGTH FEET	PROGRESSIVE TOTALS		
				COPPER	NICKEL	CU. & NI.		FEET X PER CENT		
				%	%	%		COPPER	NICKEL	CU. & NI.
0.0	Collar.									
44.0	Casing: sand: core starts at 44.0'									
189.5	Gneiss, bio. qtz. feld: granitic.									
199.0	Ultrabasic: talc-chl. sch.	F244201	9.5	.08	.08	.16		.76	.76	1.52
200.0	L.C.									
208.0	Ultrabasic, as entry to 199.0	F244202	8.0	.02	.10	.12		.92	1.56	2.48
216.0	Ultrabasic, alt'd, darker.	F244203	8.0	.03	.01	.04		1.16	1.64	2.80
227.2	Ultrabasic, alt'd talc-chl. rk.	F244204	11.2	.03	.04	.07		1.50	2.09	3.58
240.0	Ultrabasic: serp'd perid., dk. qy. mass, blotchy.	F244205	12.8	.03	.10	.13		1.88	3.37	5.25
250.0	Ultrabasic, as to 240.0'	F244206	10.0	.01	.11	.12		1.98	4.47	6.45
260.0	Ultrabasic, as to 240.0'	F244207	10.0	.01	.12	.13		2.08	5.67	7.75
270.0	Ultrabasic, as to 240.0'	F244208	10.0	Nil	.13	.13			6.97	9.05
283.0	Ultrabasic, as to 240.0', shrd 60° toward end.	F244209	13.0	Nil	.14	.14			8.79	10.87
295.0	MVVW Ultrabasic, serp'd perid., med. qy., rare sulph.	F244210	12.0	.09	.13	.22		3.16	10.35	13.51
305.0	Ultrabasic, serp'd perid., med.-dk. qy. strong alignment 60°	F244211	10.0	.03	.20	.23		3.46	12.35	15.81
310.0	Ultrabasic, as to 305.0'	F244212	5.0	.03	.21	.24		3.61	13.40	17.01
313.5	Ultrabasic, as to 305.0', wk. fol. 45°-50°/core.	F225776	3.5	.03	.15	.18		3.72	13.92	17.64
315.5	Mass. Po, 1% diss. Cp.	F225777	2.0	.34	2.17	2.51		4.40	18.26	22.66
319.0	MVW Amphibolite, 2% diss. Po.	F225778	3.5	.04	.15	.19		4.54	18.79	23.32
320.8	Metased.									
330.0	Ultrabasic, as to 305.0', moderate alignment.	F244213	9.2	.05	.15	.20		5.00	20.17	25.17
340.0	Ultrabasic, as to 330.0'	F244214	10.0	.04	.16	.20		5.40	21.77	27.17
349.2	Ultrabasic, as to 330.0'	F244215	9.2	.02	.13	.15		5.58	22.96	28.54
354.2	Gneiss, lt. qy.	F244216	5.0	.03	.01	.04		5.73	23.01	28.74
365.0	Ultrabasic, serp'd perid. blk., some text, mostly mass., rare Asb. hair- like veinlets.	F244217	10.8	.04	.23	.27		6.16	25.50	31.66

THE INTERNATIONAL NICKEL CO. OF CANADA, LIMITED

PROPERTY NEMISCAU AN. 12-20

SAMPLING RECORD

SHEET NO. 2HOLE NO. 25368 DEPTH 540' ANGLE -45° STRIKE S ELEVATION _____CO-ORDINATES
1+78N 8+00E

DEPTH FEET	FORMATION	SAMPLE NO.	LENGTH FT.	ANALYSIS			LENGTH FEET	PROGRESSIVE TOTALS		
				COPPER	NICKEL	CU. & NI.		FEET X PER CENT		
				%	%	%		COPPER	NICKEL	CU. & NI.
375.0	Ultrabasic, as to 365.0'	F244218	10.0	.05	.25	.30		6.66	28.00	34.66
376.0	MW Ultrabasic, serpd. perid. blk. waxy, rare asb. 1" str. mass Po. Pn.	F225779	1.0	.10	.86	.96		6.76	28.86	35.62
380.0	Ultrabasic, serped. perid. blk. waxy, minor asb.	F225780	4.0	.05	.18	.23		6.96	29.58	36.54
387.0	Ultrabasic, as to 365.0', five + 1/8" asb. last 3" of entry	F244219	7.0	Nil	.24	.24			31.26	38.22
396.1	Ultrabasic, dk. gy. patchy.	F244220	9.1	Nil	.15	.15			32.62	39.58
401.4	Aplite.									
410.0	Ultrabasic, variable bands talc-bio. sch. & talc-chl. sch.	F244221	8.6	Nil	.18	.18			34.17	41.13
420.5	Ultrabasic as to 410.0'	F244222	10.5	.02	.12	.14		7.17	35.43	42.60
430.0	Ultrabasic, serpd. perid. blk.	F244223	9.5	Nil	.24	.24			37.71	44.88
442.5	Ultrabasic as to 410.0', rare asb.	F244224	12.5	Nil	.26	.26			40.94	48.13
444.0	L.C.									
453.0	Ultrabasic, as to 410.0', 40 asb. veinlets 1/16" & less 18 parallel in last 3"; little slip fibre & misc. fibrous minerals.	F244225	9.0	Nil	.16	.16				
455.4	Ultrabasic, variable									
457.0	L.C. (incl. in sample.)									
462.5	Ultrabasic, variable, few asb. at 462.0'. Sample from 455.4'	F244226	9.5	.04	.08	.12				
470.2	Ultrabasic, serpd. perid., scatt. white spots.	F244227	7.7	.02	.23	.25				
470.4	Ultrabasic, 20 asb. veinlets parallel & hairline to 1/16"	F244228	0.2	.01	.21	.22				
478.5	Ultrabasic, alt'd., variable.	F244229	8.1	Nil	.20	.20				
540.0	Metased., bands gneiss near start. Irreg. blebs po py Tr. cp at 483.5									

540.0 END OF HOLE.

Started: April 9, 1964
 Completed: April 14, 1964.
 Size of Hole: AX.
 Drilled by: Morissette Diamond
 Drilling, Ltd.
 Casing left in hole, wooden plug.
 Logged by: G. L. Colgrove
 G. C. Candy
 G. J. Koleszar
 Copied by: T. C. Osborne.

THE INTERNATIONAL NICKEL CO. OF CANADA, LIMITED

PROPERTY NEMISCAU AN 12-20

SAMPLING RECORD

SHEET NO. 2C15 Sect. 204615 350' E & 533' N of Post no 3HOLE NO. 25369 DEPTH 972.0 ANGLE -55° STRIKE S ELEVATIONCO-ORDINATES 00 W 4773 N

DEPTH FEET	FORMATION	SAMPLE NO.	LENGTH FT.	ANALYSIS			LENGTH FEET	PROGRESSIVE TOTALS		
				COPPER	NICKEL	CU. & NI.		FEET X PER CENT		
				%	%	%		COPPER	NICKEL	CU. & NI.
358.0	Trap or greenstone, grey, massive but with some weak alignment fq to mg. 333.0-334.5 - pegmatite after 351.5 foliation more pronounced & greenish tinge present									
362.0	Gneiss									
369.0	Metased. banding @ 55°									
406.3	Gneiss, light to med. grey, well foliated, occ. narrow meta- sed. band									
414.0	Metased. green to dark green well foliated, grey & banded at end of entry									
432.1	Gneiss, grey, mod. foliation									
479.0	Metased., foliated & banded @ 45°-60°									
505.5	Gneiss, grey, mod. foliation, biotitic									
523.5	Metased., well banded and foliated 45°-60°, grey to dark grey									
566.5	Gneiss, occ. bands metased. well foliated, few garnets from 530.0 to 538.0 l'qtz at 548.0					566.5				
580.0	Ultrabasic, talc-chlorite schist magnetic after 573.0	F237062	13.5	Tr.	.09	.09	580.0	1.22	1.22	
595.0	Ultrabasic, as entry to 580.0 magnetic	F237063	15.0	Tr.	.08	.08	595.0	2.42	2.42	
598.8	Ultrabasic, as to 595.0									
601.5	Metased.									
610.0	Ultrabasic as to 595.0 603.0-605.5 dark & strongly mag. (serpentinite)	F237064	15.0	Tr.	.12	0.12	610.0	4.22	4.22	

THE INTERNATIONAL NICKEL CO. OF CANADA, LIMITED

PROPERTY NEMISCAU AN 12-20

SAMPLING RECORD

SHEET NO. 3

C15 Cert 204615 350' @ 533' N of Post no. 3

HOLE NO. 25369 DEPTH 972.0 ANGLE -55° STRIKE S ELEVATION

CO-ORDINATES
DOW 4773N

DEPTH FEET	FORMATION	SAMPLE NO.	LENGTH FT.	ANALYSIS			LENGTH FEET	PROGRESSIVE TOTALS FEET X PER CENT		
				COPPER %	NICKEL %	CU. & NI. %		COPPER	NICKEL	CU. & NI.
621.0	Ultrabasic, as to 545.0, occ short sections of amphib. rock	F237065	11.0	.01	.13	0.14	621.0	.01	5.65	5.76
635.0	Metased.									
636.0	L.C.									
638.0	Metased. f.g. massive, sugary texture, grey rock, rare film Po on fractures	F237057	2.0	.02	.09	0.11	638.0	.05	5.83	5.98
639.7	MvW Ultrabasic, perid., f.g. grey rock, partly silf'd, possibly altered perid. Min 10% Po in streaks to 1/2" thick at 50° to core	F237058	1.7	.08	.59	0.67	639.7	.29	6.83	7.11
640.7	MS Ultrabasic, perid., 85% Po abundant Po	F237059	1.0	.16	2.22	2.38	640.7	.45	9.05	9.50
642.7	MvW Ultrabasic, perid., 4% Po interstitial to serpentini- zed pyroxene crystals. Rare hairline asbestos	F237060	2.0	.01	.25	0.26	642.7	.47	9.55	10.02
646.0	Ultrabasic, perid., dark grey to black, f.g., magnetic, waxy rare specks sulphide	F237061	3.3	.01	.22	0.23	646.0	.50	10.27	10.77
659.3	Ultrabasic, serpentized perid. strongly magnetic, occ. hairline asbestos	F237066	13.3	.02	.21	0.23	659.3	.77	13.07	13.83
665.0	MvW Ultrabasic as to 659.3, dissem. & stringers of sulph. Po minor Cp	F237067	5.7	.02	.31	0.33	665.0	.80	14.83	15.71
670.0	MvW Ultrabasic as to 659.3	F237068	5.0	.02	.34	0.36	670.0	.98	16.53	17.51
671.0	MW Ultrabasic, interstitial sulphide plus 2" MS Po stringer at 50° to core	F237069	1.0	.21	1.01	1.22	671.0	1.49	17.54	18.73
674.5	Ultrabasic as to 659.3, occ. sulphide	F237070	3.5	.07	.20	0.27	674.5	1.43	18.24	19.67
685.0	Ultrabasic as to 659.3, occ. sulphide	F237071	10.5	.04	.22	0.26	685.0	1.85	20.55	22.40

THE INTERNATIONAL NICKEL CO. OF CANADA, LIMITED

PROPERTY NEMISCAU AN 12-20

SAMPLING RECORD

SHEET NO. 4C15 Cert. 204615 350'E & 533'N of Post no 3HOLE NO. 25369 DEPTH 972.0 ANGLE -55° STRIKE S ELEVATIONCO-ORDINATES
00 W 4+73 N

DEPTH FEET	FORMATION	SAMPLE NO.	LENGTH FT.	ANALYSIS			LENGTH FEET	PROGRESSIVE TOTALS		
				COPPER	NICKEL	CU. & NI.		FEET X PER CENT		
				%	%	%		COPPER	NICKEL	CU. & NI.
693.0	Ultrabasic as to 659.3, occ. sulphide	F237072	8.0	.08	.22	0.30	693.0	2.49	22.31	24.80
693.8	MW Ultrabasic, irregular stringers of Cp Po Mag. about 4% Cu	F237073	0.8	7.73	.67	8.40	693.8	8.65	22.85	31.53
700.0	Ultrabasic as to 659.3	F237074	6.2	.08	.21	0.29	700.0	9.17	24.15	33.32
707.0	Ultrabasic as to 659.3									
708.5	Ultrabasic, altered, lighter in color, greenish colored last 1/2'	F237075	8.5	.04	.24	0.28	708.5	9.51	26.19	35.70
745.5	Gneiss, approaching a biotite granite in part, weak foliation						745.5			
752.0	Ultrabasic, altered, talc rock	F237076	6.5	.04	.05	0.09	752.0	9.77	26.52	36.29
760.0	Ultrabasic, serpentized peridot magnetic, black, coarse hairline ash	F237077	8.0	.03	.12	0.15	760.0	10.01	27.48	37.49
770.0	Ultrabasic as to 760.0	F237078	10.0	.04	.24	0.28	770.0	10.41	29.88	40.29
780.0	Ultrabasic as to 760.0	F237079	10.0	.04	.22	0.26	780.0	10.81	32.08	42.89
789.0	Ultrabasic as to 760.0	F237080	9.0	.03	.18	0.21	789.0	11.08	33.70	44.78
799.0	Ultrabasic as to 760.0, lighter in color	F237081	10.0	.04	.23	.27	799.0	11.48	36.00	47.48
808.0	Ultrabasic as to 760.0, lighter in color	F237082	9.0	.02	.20	0.22	808.0	11.66	37.80	49.46
817.0	Ultrabasic, very black, blotchy, occ. asbestos stringer to 1/16"	F237083	9.0	.02	.20	0.22	817.0	11.84	39.60	51.44
832.5	Ultrabasic as to 817.0, numerous asbestos stringers from hairline to 1/16", probably less than 1% total fibre	F237084	15.5	.03	.22	0.25	832.5	12.31	43.01	55.32
840.0	Ultrabasic, uniform black color	F237085	7.5	.01	.26	0.27	840.0	12.38	44.96	57.34
850.0	Ultrabasic as to 840.0	F237086	10.0	.01	.26	0.27	850.0	12.48	47.56	60.04
866.0	Ultrabasic as to 840.0, sharp cut with next entry at 40° to core	F237087	16.0	.01	.21	0.22	866.0	12.64	50.92	63.56

THE INTERNATIONAL NICKEL CO. OF CANADA, LIMITED

PROPERTY NEMISCAU AN 12-20

SAMPLING RECORD

SHEET NO. 2

C14 Cert. 204615 450' E & 610' N of Post no. 3

CO-ORDINATES

HOLE NO. 25370 DEPTH 782.0 ANGLE -57° STRIKE S ELEVATION

12+0 W 4+60 N

DEPTH FEET	FORMATION	SAMPLE NO.	LENGTH FT.	ANALYSIS			LENGTH FEET	PROGRESSIVE TOTALS		
				COPPER	NICKEL	CU. & NI.		FEET X PER CENT		
				%	%	%		COPPER	NICKEL	CU. & NI.
365.6	Greenstone, mg., green-black amp-gtz rock same bio near contact of previous entry, sphs Pa Py Cp									
415.6	Gneiss as entry to 359.2. sphs Pa at 403.0, Py on some fractures					994				
418.8	Metased., green, mg., bio-gtz- amp. rock, banding & fol. at 50% core									
419.8	M.v.w. Metased. as entry to 418.8 7% Pa, 1% Py	F244238	1.0	.04	.02	.06	.04	.02	.060	
436.2	Metased. as entry to 418.8									
442.1	M.v.w. Metased. as entry to 418.8 1% sulph. Pa Cp(?)	F244239	5.9	.05	.03	.08	.33	.19	.53	
453.2	Metased. as entry to 418.8									
459.8	Amp-bio rock green, mg., non- mag to slightly mag. probably a phase of the ultrabasic	F244240	6.6	.03	.04	.07	.53	.46	.99	
465.0	Talc-chlor-amp schist, grey- green, mg., mag, felted	F244241	5.2	NIL	.10	.10	.53	.98	1.51	
475.0	Talc-chlor-amp schist as entry to 465.0	F244242	10.0	NIL	.07	.07	.53	1.68	2.21	
485.0	Talc-chlor-amp schist as entry to 465.0	F244243	10.0	.03	.10	.13	.83	2.68	3.51	
496.5	Talc-chlor-amp schist as entry to 465.0	F244244	11.5	NIL	.09	.09	.83	3.71	4.54	
497.5	L.C.		1.0							
510.3	Talc-chlor-amp schist as entry to 465.0	F244245	12.8	NIL	.08	.08	.83	4.74	5.57	
512.2	Metased., gtc-like rock with some biotite bands, sphs Cp present	F244246	1.9							
513.5	L.C.		1.3	.10	.03	.13	1.02	4.79	5.82	

THE INTERNATIONAL NICKEL CO. OF CANADA, LIMITED

PROPERTY NEMISCAU AN 12-20 SAMPLING RECORD

SHEET NO. 3

C14 Cert. 204615 450'E & 610'N of Post no 3

CO-ORDINATES

HOLE NO. 25370 DEPTH 782.0 ANGLE -57° STRIKE S ELEVATION

12+0 W 4+60 N

DEPTH FEET	FORMATION	SAMPLE NO.	LENGTH FT.	ANALYSIS			LENGTH FEET	PROGRESSIVE TOTALS FEET X PER CENT		
				COPPER	NICKEL	CU. & NI.		COPPER	NICKEL	CU. & NI.
				%	%	%				
514.0	MS. peridotite, serpentinized, black, f.g., waxy, magnetic sulph. massive & interstitial 40% Po, 40% Cp	F244247	0.5	7.00	.81	7.81	4.52	5.20	9.72	
518.0	MW perid. as entry to 514.0 Po interstitial & in strcs to 1/2" wide, Pn visible as small eyes in Po 20% Po	F244248	4.0	.66	.47	1.15	7.16	7.16	14.32	
524.5	MvW perid. as entry to 514.0 2% Po	F244249	6.5	.17	.19	.36	8.26	8.39	16.64	
529.5	M perid. as entry to 514.0 Po massive in places, visible Pn 40% Po	F244250	5.0	.87	.80	1.67	12.61	12.39	25.01	
532.5	M perid. as entry to 514.0 visible Pn 50% Po	F244251	3.0	.68	1.07	1.75	14.65	15.60	30.26	
536.5	MvW perid. as entry to 514.0 1% Po	F244252	4.0	.48	.17	.65	16.57	16.28	32.86	
538.0	MW perid. as entry to 514.0 visible Pn 15% Po	F244253	1.5	.94	.60	1.54	17.98	17.18	35.17	
543.0	MS perid. as entry to 514.0 two massive bands Po, 18" & 10" wide, visible Pn 70% Po	F244254	5.0	.48	1.40	1.88	20.38	24.18	44.57	
544.5	Mass. perid. as entry to 514.0 95% Po + Pn	F244255	1.5	.44	2.01	2.45	21.04	27.20	48.25	
549.5	MvW perid. as to 514.0 visible Pn 10% Po	F244256	5.0	.39	.43	.82	22.79	29.35	52.35	
553.5	MW perid. as entry to 514.0 visible Pn 25% Po	F244257	4.0	.52	.15	.67	27.07	33.15	58.63	
558.2	MvW perid. as entry to 514.0 small veinlets of asbestos present, 1% Po	F244258	4.7	.24	.23	.47	26.20	34.23	60.83	

THE INTERNATIONAL NICKEL CO. OF CANADA, LIMITED

PROPERTY NEMISCAU AN 12-20

SAMPLING RECORD

SHEET NO. 4

C14 Cert. 204615 450' E & 610' N of Post no 3

CO-ORDINATES

HOLE NO. 25370 DEPTH 782.0 ANGLE -57° STRIKE S ELEVATION

12+0 W 4+60 N

DEPTH FEET	FORMATION	SAMPLE NO.	LENGTH FT.	ANALYSIS			LENGTH FEET	PROGRESSIVE TOTALS		
				COPPER	NICKEL	CU. & NI.		FEET X PER CENT		
				%	%	%		COPPER	NICKEL	CU. & NI.
571.0	Recovered 11' of perid. chips sand & mud with Po Cp (P) L.C. at 560.0-561.0 568.0-569.0	F244259	12.8	.34	.35	.69	26.68	34.72	61.40	
572.4	L.C.		1.4							
576.7	Perid. as entry to 514.0, several small asbestos veinlets & one vein 3/8" wide at 576.0 at 45° core, core spks Po visible									
577.3	L.C.									
580.1	Perid. as entry to 514.0, 1/8" asbestos str at 578.0 at 45° core	F244260	3.4	NIL	.22	.22	26.68	35.47	62.15	
581.0	L.C.		0.9							
587.4	Perid. as entry to 514.0, at 582.5 get 6" of non mag. talc-chlor rock	F244261	6.4	NIL	.14	.14	26.68	36.36	63.04	
588.0	L.C.		0.6							
592.4	Perid. as entry to 514.0, few small asbestos str's and one str 1/16" wide	F244262	4.4	NIL	.20	.20	26.68	37.24	63.92	
602.1	Amphibolite, amp, chlor. talc, green-grey, mg-fq, felted, non-mag. to weakly mag.	F244263	9.7	NIL	.13	.13	26.68	38.50	65.19	
608.8	Rock varied, changes from amp-bio rock (3') to brecciated appearing rock (1') to a bright green ser- pentine rock, all non-mag. to weakly mag.	F244264	6.7	NIL	.04	.04	26.68	38.77	65.45	
620.0	Perid. serpentinized, mag., f.g., black-green, waxy	F244265	11.2	NIL	.21	.21	26.68	41.12	67.81	
629.2	Perid. as to previous entry, 5 asbestos str's to 1/4" thick near end of entry	F244266	9.2	NIL	.22	.22	26.68	43.15	69.83	

THE INTERNATIONAL NICKEL CO. OF CANADA, LIMITED

PROPERTY NEMISCAU AN 12-20

SAMPLING RECORD

SHEET NO. 5

C14 Cert. 204615 450' E & 610' N of Post no 3

CO-ORDINATES

HOLE NO. 25370 DEPTH 782.0 ANGLE -57° STRIKE S ELEVATION

12+0 W 4+60 N

DEPTH FEET	FORMATION	SAMPLE NO.	LENGTH FT.	ANALYSIS			LENGTH FEET	PROGRESSIVE TOTALS		
				COPPER	NICKEL	CU. & NI.		FEET X PER CENT		
				%	%	%		COPPER	NICKEL	CU. & NI.
642.3	Metased. qz-gtz-bio rock, foliation weak & variable qz to 1/8" diam.									
648.7	Perid. amp-serp. rock, m.g. at start of entry chan- ging to f.g., weakly mag.	F244267	6.4	.02	.21	.23	26.81	44.49	71.30	
651.8	Serpentine rich rock, black- green, f.g., several asbesto- str's to 1/8" wide at 45° core, weakly mag.	F244268	3.1	NIL	.12	.16	26.81	44.99	71.80	
665.0	Perid. black-green, serpentized waxy, mag., several str's of soft bluish-white unknown mineral at 45° core	F244269	13.2	NIL	.23	.23	26.81	48.02	79.83	
675.0	Perid. as entry to 665.0	F244270	10.0	NIL	.22	.22	"	50.22	77.03	
685.0	Perid. as entry to 665.0	F244271	10.0	NIL	.21	.21	"	52.32	79.13	
695.0	Perid. as entry to 665.0	F244272	10.0	NIL	.21	.21	"	54.42	81.23	
705.0	Perid. as entry to 665.0	F244273	10.0	NIL	.20	.20	"	56.42	83.53	
713.3	Perid. as entry to 665.0	F244274	8.3	NIL	.20	.20	"	58.08	85.19	
715.0	L.C.		1.7							
717.0	Perid. as entry to 665.0									
720.0	L.C.									
721.3	Perid. as entry to 665.0									
723.6	L.C.									
731.0	Perid. as entry to 665.0, last 2' of entry about 60% calcite	F244275	16.0	NIL	.22	.22	"	61.60	88.71	
735.7	Amphibolite, m.g.-f.g., grey, magnetite present as fine dissem. crystals & in str's	F244276	4.7	NIL	.26	.26	"	62.83	89.94	

THE INTERNATIONAL NICKEL CO. OF CANADA, LIMITED

PROPERTY NEMISCAU AN 12-20

SAMPLING RECORD

SHEET NO. 8

C19 East 204615 450' E & 610' N of Post no. 3

CO-ORDINATES

HOLE NO. 25370 DEPTH 782.0 ANGLE -57° STRIKE S ELEVATION

12+0 W 4+60 N

DEPTH FEET	FORMATION	SAMPLE NO.	LENGTH FT.	ANALYSIS			LENGTH FEET	PROGRESSIVE TOTALS		
				COPPER	NICKEL	CU. & NI.		FEET X PER CENT		
				%	%	%		COPPER	NICKEL	CU. & NI.
512.2	Metased. qtz like rock									
513.5	L.C.									
571.0	Perid. waxy black mag scrp'd mass - MuvW									
572.4	L.C.									
592.4	Perid. as to 571. no mineralization asbestos str									
602.1	Amphibolite green-grey. non mag to weakly mag.									
608.8	Amphibolite to serpentine rock									
629.2	Perid. black-green, fig. waxy mag. scrp'd, sub str's									
642.3	Metased. qa-gtz-bio rock									
731.0	Perid. as to 629.2									
735.7	Amphibolite, qz. magnetite present									
782.0	Metased., grey, bio qtz fld, mag.									
782.0	End of hole									
Hole started June 14 1964										
Hole completed June 20 1964										
Size of hole: AX										
Drilled by Marquette Diamond Drilling Ltd										
Casing not pulled										
Hole plugged by wooden plug										
Logged by G. J. Koleszar										
Acid Tests: 0' - 57°										
48' - 54°30'										
200' - 50°										
400' - 44°45'										
600' - 43°45'										
770' - 42°45'										

THE INTERNATIONAL NICKEL CO. OF CANADA, LIMITED

PROPERTY NEMISCAU ANOM 12-20

SAMPLING RECORD

SHEET NO. 3

C13 Cert 204615 280'E & 585'N of Post no 3

CO-ORDINATES

HOLE NO. 25372 DEPTH 449.0 ANGLE -55° STRIKE S ELEVATION

26+00W 2+30N

DEPTH FEET	FORMATION	SAMPLE NO.	LENGTH FT.	ANALYSIS			LENGTH FEET	PROGRESSIVE TOTALS		
				COPPER	NICKEL	CU. & NI.		FEET X PER CENT		
				%	%	%		COPPER	NICKEL	CU. & NI.
	spkr estks Py, rare Cp	F244541	7.0	.01	.07	.08				
235.0	Talc chlorite amp schist, f.g., grey									
	soapy, spkr Py & magnetite	F244542	8.0	Tr.	.08	.08				
248.0	Talc chlorite amp schist, large									
	blks Py, coarse conchoidal in									
	places	F244543	13.0	.01	.06	.17				
255.0	Percid., f.g., dark gy, mag.									
	serp'd, spkr magnetite, spkr									
	str's Py, carb. str's with Po	F244544	7.0	.01	.15	.16				
265.0	Percid., f.g., dark grey, mag.									
	serp'd, spkr magnetite	F244545	10.0	Tr.	.15	.15				
275.0	Percid. as to 265.0, carbonate									
	str's	F244546	10.0	NIL	.20	.20				
285.0	Percid. as entry to 265.0, asbesto									
	str's to 1/8" from 279.0 to 282.0									
	parallel or at acute angles									
	to core	F244547	10.0	NIL	.04	.04				
295.0	Percid. as entry to 265.0, several									
	str's ash. to 1/16" wide at									
	292.0 at 45° core	F244548	10.0	NIL	.16	.16				
305.0	Percid. as entry to 265.0, ash									
	str's to 1/16" wide	F244549	10.0	NIL	.44	.44				
315.0	Percid. as entry to 265.0, ash									
	str's to 1/16" at acute angles									
	to core	F244550	10.0	NIL	.21	.21				
325.0	Percid. as entry to 265.0, ash									
	str's hairline to 1/16" at									
	acute angles to core	F244551	10.0	NIL	.23	.23				
344.8	Percid. as entry to 265.0, few									
	hairline ash str's, veinlets									
	of carb. & serp. containing									
	dissem. Po at 336.5 & 339.0,									
	at 441.0 get 7% Po for 5"	F244552	9.8	Tr.	.21	.21				
345.2	Carbonate vein with angular									
	perid. breccia & light green									
	mineral	53 ?	.4	NIL	.36	.36				

THE INTERNATIONAL NICKEL CO. OF CANADA, LIMITED

PROPERTY NEMISCAU ANOM 12-20

SAMPLING RECORD

SHEET NO. 4

C13 Cert 204615 280'E & 585'N of Post no 3

CO-ORDINATES

HOLE NO. 25372 DEPTH 449.0 ANGLE -55° STRIKE S ELEVATION

26+00 W 2+30 N

DEPTH FEET	FORMATION	SAMPLE NO.	LENGTH FT.	ANALYSIS			LENGTH FEET	PROGRESSIVE TOTALS		
				COPPER	NICKEL	CU. & NI.		FEET X PER CENT		
				%	%	%		COPPER	NICKEL	CU. & NI.
354.6	Perid. as entry to 265.0, numerous carb. veins to 3/8" some with str. & dissem. Py, last foot of entry becoming schistose	F244554	9.4	.01	.24	.25				
356.0	Talc schist, light grey soft, soapy mag.	F244555	1.4	NIL	.21	.21				
362.4	Talc chlorite schist, green, rock fractured & crumbly, weakly mag, spks f. large blebs Py especially near contact with next entry	F244556	6.4	.01	.19	.20				
366.6	Qtz-feld rock, white, c.g., vuggy, epidote & ash (corradalite?) crystals in vugs, minor amp with Py									
367.3	Metased, qtz, grey, mag, qtz bio feld minor amp, vugs & veins containing crystals of epidote & carbonate, spks Py									
369.1	Qtz-feld rock as entry to 366.6									
370.9	Metased. as entry to 367.3									
373.5	Qtz-feld rock as entry to 366.6									
396.8	Metased, qtz, grey, mag, weakly mag. in places, vuggy qtz-feld veins, epidote veins, masses of chlorite-amp schist near start of entry, spks magnetite, spks & blebs Py, rare Pa Cp									
431.0	Metased, qtz f.g., grey, first 3' weakly magnetic, no epidote small bands amphibole, fol & banding at 45°/case Py on fractures in carb. veinlets & spks									

THE INTERNATIONAL NICKEL CO. OF CANADA, LIMITED

PROPERTY NEMISCAU ANOM 12-20

SAMPLING RECORD

SHEET NO. 6

C13 Sect. 204615 280'E & 585'N of Post no 3

CO-ORDINATES

HOLE NO. 25372 DEPTH 449.0 ANGLE -55° STRIKE S ELEVATION

26+00 W 2+30 N

DEPTH FEET	FORMATION	SAMPLE		ANALYSIS			LENGTH FEET	PROGRESSIVE TOTALS		
		NO.	FT.	COPPER	NICKEL	CU. & NI.		FEET X PER CENT		
				%	%	%		COPPER	NICKEL	CU. & NI.
	LOG SUMMARY									
0.0	Collar									
36.0	Casing									
38.4	Gneiss									
50.6	Greenstone									
71.0	Metased. qtz, fgs, gte									
95.0	Greenstone									
130.5	Metased.									
137.5	L.C.									
156.6	Greenstone									
167.0	Gneiss									
174.0	L.C.									
183.0	Greenstone									
185.0	L.C.									
201.5	Gneiss									
206.2	Greenstone									
207.5	Pegmatite									
209.2	Greenstone									
213.0	Pegmatite									
214.2	Talc chlorite amp schist									
214.8	Pegmatite									
248.0	Talc chlorite amp schist, spks mag									
354.6	Pecidotite, spks mag, sch. sh.									
356.0	Talc schist									
362.4	Talc chlorite schist									
366.6	Qtz-feld. rock, vuggy									
367.3	Metased, gte									
369.1	Qtz-feld. rock									
370.9	Metased									
373.5	Qtz-feld. rock									
396.8	Metased, gte, epidote veins, mag									
449.0	Metased, gte, no epidote, non-mag									
449.0	End of hole									

Started July 1 1964
 Completed July 7 1964
 Drilled by Macisette Diamond Drilling
 Hole size AXT
 Casing left in
 Hole plugged
 Logged by G.J. Koleszar

Tests: 0' - 55°
 40' - 52° 15'
 200' - 50°
 400' - 49° 30'

THE INTERNATIONAL NICKEL CO. OF CANADA, LIMITED

PROPERTY NEMISCAW ANOMI 12-20

SAMPLING RECORD

SHEET NO. 7

C14 Cent 204615 40'E & 720' N of Post no 3

CO-ORDINATES

HOLE NO. 25373 DEPTH 951.0 ANGLE -58° STRIKE S ELEVATION

16+00W 6+45N

DEPTH FEET	FORMATION	SAMPLE NO.	LENGTH FT.	ANALYSIS			LENGTH FEET	PROGRESSIVE TOTALS		
				COPPER %	NICKEL %	CU. & NI. %		FEET X PER CENT		
							COPPER	NICKEL	CU. & NI.	
	710%									
	shear zones, 2 to 10 Po visible Po									
762.3	M.W. Perid. as entry to 740.0, ash strc hairline to 1/16", Po in small shear zones & in scattered blebs & sphy. about 5% Po, visible Po	F244570	5.0	.24	.37	.61	4.30	20.44	24.74	
770.0	M.W. Perid. as entry to 740.0, hairline ash strc, Po in shear zones & scattered sphy, 710% Po, visible Po	F244571	2.3	.12	.25	.37	4.58	21.02	25.60	
780.7	Perid. as entry to 740.0, str Po in small shear zone at 777.5	F244572	7.7	.30	.21	.51	6.87	22.63	29.52	
787.7	Perid. as entry to 740.0, numerous ash strc hairline to 1/8", Po with 3 ash strc get increase in amt of serp. in rock	F244573	10.7	.20	.25	.45	9.03	25.31	34.34	
793.8	Perid. as to previous entry, few hairline ash strc	F244574	7.0	.11	.29	.40	9.80	27.34	37.14	
807.2	Perid. as entry to 787.7, few ash strc, rock greatly fractured & sheared	F244575	6.1	.11	.26	.37	10.47	28.92	39.40	
812.7	Perid. as entry to 787.7, large amt ash present, numerous strc hairline to 1/8", 4 strc 1/8" to 1/4" & 4 or 5 strc 1/4" to 1/2"	F244576	13.4	.10	.23	.33	11.81	32.01	43.82	
813.8	Talc chlorite amphibole schist, grey-green, mag. non-mag, biotite schist at contact with next entry	F244577	5.5	.04	.21	.25	12.03	33.16	45.19	
820.0	Melted, white, f.g. sugary texture, qtz feld bio, bio as small aggregations giving	F244578	1.1	.03	over 10% / 5%		12.06	33.20	45.26	

THE INTERNATIONAL NICKEL CO. OF CANADA, LIMITED

PROPERTY NEMISCAU ANOM 12-20

SAMPLING RECORD

SHEET NO. 8C14 Cert 204615 40'E & 720'N of Post no 3

CO-ORDINATES

HOLE NO. 25373 DEPTH 951.0 ANGLE -58° STRIKE S ELEVATION16+00 W 6+45 N

DEPTH FEET	FORMATION	SAMPLE NO.	LENGTH FT.	ANALYSIS			LENGTH FEET	PROGRESSIVE TOTALS		
				COPPER	NICKEL	CU. & NI.		FEET X PER CENT		
				%	%	%		COPPER	NICKEL	CU. & NI.
	rock speckled appearance, small qtz masses, no fol		6.2							
821.8	L.C.		1.8							
822.1	Metased. as entry to 820.0		0.3							
825.0	Perid. as entry to 787.7, about 20 ash strc hairline to 1/8" 4 strc 1/8" to 1/4" & 1 strc 1/4" to 1/2"			(about 2% ash fibre type.						
835.0	Perid. as entry to 787.7, sooty black color, rock greatly shred & fractured in first part of entry, 10 ash strc hairline to 1/16"	F244579	2.9	.02	.13	.15	12.12	33.58	45.70	
843.1	Perid. as entry to 787.7, sooty black, 12 ash strc hairline to 1/16"	F244580	10.0	.04	.22	.26	12.52	35.78	48.30	
844.7	Perid. as entry to 787.7, sooty black, about 40 ash strc hairline to 3/16"	F244581	8.1	.02	.20	.22	12.68	37.40	50.08	
849.6	Chlorite amp. serp. rock, vary- ing from almost wholly serp. to almost wholly and light grey, mag.-fg, weakly mag to mag, spls magnetite	F244582	1.6	.02	.13	.15	12.71	37.61	50.32	
860.0	Perid. hard, dense, fg, dark grey rock, serpd, mag, m.g. in places, few ash strc, dissem. spls magnetite, occ. splc Py	F244583	4.9	.03	.12	.15	12.83	38.20	51.06	
867.7	Perid. as to previous entry	F244584	10.4	.04	.17	.21	13.28	39.97	53.25	
871.1	Chlor amp serp rock as entry to 849.6, serpentinite from 869.7-870.5	F244585	7.7	.02	.20	.22	13.43	41.51	54.94	
875.0	Perid. as entry to 787.7, 60 ash strc hairline to 1/8" at about 70°/core to 1/2"	F244586	3.4	.03	.11	.14	13.53	41.88	55.42	
		F244587	3.9	.08	.21	.29	13.85	42.70	56.55	

THE INTERNATIONAL NICKEL CO. OF CANADA, LIMITED

PROPERTY NEMISCAU ANOM 12-20

SAMPLING RECORD

SHEET NO. 9

C14 Cert 204615 40'E & 720'N of Post no 3

CO-ORDINATES

HOLE NO. 25373 DEPTH 951.0 ANGLE -58° STRIKE S ELEVATION

16+00W 6+45N

DEPTH FEET	FORMATION	SAMPLE NO.	LENGTH FT.	ANALYSIS			LENGTH FEET	PROGRESSIVE TOTALS FEET X PER CENT		
				COPPER	NICKEL	CU. & NI.		COPPER	NICKEL	CU. & NI.
				%	%	%				
876.4	Perid. at entry to 787.7, few hairline ash stcs 7.1%									
877.4	L.C.									
882.0	Perid. at entry to 787.7, few hairline ash stcs	F244588	7.0	.02	.23	.25	13.99	44.31	58.30	
882.7	L.C.		0.7	.02	.21	.23	14.00	44.46	58.46	
890.0	Perid. at entry to 787.7, about 10 ash stcs hairline to 1/16", 1/4" metased band at 886.0 with spks Py	F244589	7.3	.02	.19	.21	14.15	45.84	59.97	
900.0	Perid. at entry to 787.7, speckled few ash stcs	F244590	10.0	.03	.20	.23	14.45	47.84	62.29	
908.2	Perid. at entry to 787.7, stcs magnetite associated with some small cheuc zones, 1/2 doz 1/8" ash stcs at end of entry	F244591	8.2	.02	.16	.18	14.61	49.15	63.76	
951.0	Metased. grey, mg-fg, mainly bio schist sometimes with qa or with qtz augen, few bands of amp, spk Py & stcs magnetite at 913.5 for 3" stcs & spks Py near start of entry & at 930.0 get 90' of h.c. in whole entry									
951.0	End of hole									
	Hole started July 9 1964			Tests:	0' - 58°					
	Hole completed July 18 1964				50' - 55° 30'					
	Drilled by Marisette Diamond Drilling				200' - 53° 45'					
	Size of hole: AXT				400' - 48° 30'					
	Coring not pulled				600' - 42° 45'					
	Hole plugged				800' - 42° 45'					
	Logged by G. J. Koleszar				930' - 42° 45'					

THE INTERNATIONAL NICKEL CO. OF CANADA, LIMITED

PROPERTY NEMISCAU ANOM 12-20

SAMPLING RECORD

SHEET NO. 11

C14 Sect 204615 40'E & 720'N of Post no 3

CO-ORDINATES

HOLE NO. 25373 DEPTH 951.0 ANGLE -58' STRIKE S ELEVATION

16+00 W 6+45 N

DEPTH FEET	FORMATION	SAMPLE NO.	LENGTH FT.	ANALYSIS			LENGTH FEET	PROGRESSIVE TOTALS		
				COPPER	NICKEL	CU. & NI.		FEET X PER CENT		
				%	%	%		COPPER	NICKEL	CU. & NI.
575.8	Metased									
585.9	Greenstone									
591.3	Metased									
603.9	Greenstone									
607.4	Metased									
617.5	Greenstone									
634.5	Metased									
635.0	L.C.									
677.0	Talc chlorite amp schist									
726.0	Perid. speckled									
727.2	Amphibolite									
733.6	Metased. f.g.									
737.1	Amphibolite, muscov									
740.0	Perid. spl. magnetite, black									
770.0	Perid as to 740.0, mv-muscov									
780.7	Perid as to 740.0									
812.7	Perid, more serp, abundant ash									
813.8	Talc chlorite amp schist									
822.1	Metased, f.g. white									
844.7	Perid. as to 812.7									
849.6	Chlorite amp serp. rock									
867.7	Perid. hard, dark grey									
871.7	Chlorite amp serp. rock									
908.2	Perid as to 812.7									
951.0	Metased, bio schist									
951.0	End of hole									

Hole started July 9 1964
Hole completed July 18 1964
Drilled by Morissette Diamond Drilling
Size of hole: AXT
Casing not pulled
Hole plugged
Logged by G. J. Kolerzar

Tests: 0' - 58°
50' - 55° 30'
200' - 53° 45'
400' - 48° 30'
600' - 42° 45'
800' - 42° 45'
930' - 42° 45'

THE INTERNATIONAL NICKEL CO. OF CANADA, LIMITED

PROPERTY NEMISCAU ANOM 12-20

SAMPLING RECORD

SHEET NO. 5Cl3 Cert. 204615 475' W & 530' S of Post no 1

CO-ORDINATES

HOLE NO. 25374 DEPTH _____ ANGLE -65° STRIKE S ELEVATION _____22+00 W 7+12 N

DEPTH FEET	FORMATION	SAMPLE NO.	LENGTH FT.	ANALYSIS			LENGTH FEET	PROGRESSIVE TOTALS FEET X PER CENT		
				COPPER %	NICKEL %	CU. & NI. %		COPPER	NICKEL	CU. & NI.
736.2	Metased. as entry to 686.2 gneissic in part, spls Py									
786.9	Greenstone, qtz-amp gneiss, green, mag., speckled app- earance, massive in part, qtz-feld bands near start of entry & metased bands near end of entry, small peg dyke at 781.0, fol 45° to core, spls & blebs Py									
787.9	Pegmatite, pink, c.q., qtz feld musc to qz, contacts sharp at 60°/core									
789.1	Greenstone as entry to 786.9									
801.6	Metased of variable composition gneissic in part & with bio- & amp-crb bands, str. Py & spls Cp at 795.0, contact with next entry sharp at 45°/core									
806.6	Amphibolite, green, mag, str carb, some metased. bands at 805.0, magnetic after 804.5, spls magnetite start at 804.5, schistose near end of entry	F251901	5.0	.01	.31	.32	.05	1.55	1.60	
820.0	Chlorite-amp schist, grey-green, mag, mag, serpl'd, carb str, spls magnetite, fol 50°/core	F251902	13.4	Nil	.12	.12		3.16	3.21	
830.0	Talc chlorite amp schist, grey- green, mag, mag, felted crystalline appearance, no fol, carb str, spls magnetite	F251903	10.0	.04	.07	.11	.45	3.86	4.31	
840.0	Perid, f.g., grey, serpl'd, mag, amp crystals give rock blotch appearance, carb str, spls mag	F251904	10.0	.01	.16	.17	.55	5.46	6.01	

THE INTERNATIONAL NICKEL CO. OF CANADA, LIMITED

PROPERTY NEMISCAU ANOM 12-20

SAMPLING RECORD

SHEET NO. 6

C13 Cert 204615 475' W & 530' S of Post no 1

CO-ORDINATES

HOLE NO. 25374 DEPTH _____ ANGLE -65° STRIKE S ELEVATION _____

22+00W 7+12N

DEPTH FEET	FORMATION	SAMPLE NO.	LENGTH FT.	ANALYSIS			LENGTH FEET	PROGRESSIVE TOTALS FEET X PER CENT		
				COPPER	NICKEL	CU. & NI.		COPPER	NICKEL	CU. & NI.
				%	%	%				
850.0	Perid. as to previous entry	F251905	10.0	Nil	.13	.13		6.76	7.31	
860.0	Perid. as entry to 840.0	F251906	10.0	Nil	.19	.19		8.66	9.21	
870.0	Perid. as entry to 840.0	F251907	10.0	Nil	.15	.15		10.16	10.71	
880.0	Perid. as entry to 840.0, ash str.	F251908	10.0	Nil	.16	.16		11.76	12.31	
890.0	Perid. as entry to 840.0, ash str.	F251909	10.0	Nil	.18	.18		13.56	14.11	
900.0	Perid. as entry to 840.0	F251910	10.0	Nil	.19	.19		15.46	16.01	
910.0	Perid. as entry to 840.0	F251911	10.0	Nil	.20	.20		17.46	18.01	
920.0	Perid. as entry to 840.0	F251912	10.0	Nil	.18	.18		19.26	19.81	
930.0	Perid. as entry to 840.0	F251913	10.0	Nil	.15	.15		20.76	21.31	
940.0	Perid. as entry to 840.0	F251914	10.0	Nil	.20	.20		22.76	23.31	
950.0	Perid. as entry to 840.0	F251915	10.0	Nil	.20	.20		24.76	25.31	
960.0	Perid. as entry to 840.0	F251916	10.0	Nil	.19	.19		26.66	27.21	
970.9	Perid. as entry to 840.0, schistose at contact with next entry	F251917	10.0	NiFe	.20	.20		28.66	29.21	
980.0	Perid., f.g., sooty black, mag., scap'd, waxy, spks magne- tite, about 35 ash str. from hairline to 1/16" at various angles to core	F251918	9.1	.04	.23	.27	.91	30.75	31.67	
986.6	Perid. as to previous entry, about 30 ash str. hair- line to 1/16", last 4' of entry greatly sh'd & fractured with unknown white fibrous mineral, saving from seam here.	F251919	6.6	.04	.21	.25	1.18	32.14	33.32	
990.0	M Perid. as entry to 980.0 mineralization in small shear zones, ash str., small eyes Pn, 45% sul, 43% Po, 2% Cp, Ni 8% Cu 6%	F251920	3.4	.18	.83	1.01	1.79	34.96	36.95	
994.0	M Perid. as entry to 980.0, 60% sul, 57% Po, 3% Cp, visible Pn, ash str. Ni 1.0% Cu 1.0%	F251921	4.0	.33	.87	1.20	3.11	38.44	41.55	

THE INTERNATIONAL NICKEL CO. OF CANADA, LIMITED

PROPERTY NEMISCAU ANOM 12-20

SAMPLING RECORD

SHEET NO. 7

C13 Cent 204615 475'W & 530'S of Post no 1

CO-ORDINATES

HOLE NO. 25374 DEPTH ANGLE -65° STRIKE S ELEVATION

22+00W 7+12N

DEPTH FEET	FORMATION	SAMPLE NO.	LENGTH FT.	ANALYSIS			LENGTH FEET	PROGRESSIVE TOTALS / FEET X PER CENT		
				COPPER %	NICKEL %	CU. & NI. %		COPPER	NICKEL	CU. & NI.
996.7	MW Percid as entry to 985.0, sub str. 15% Po, Ni .45%	F251922	2.7	.18	.23	.41		3.60	39.06	42.66
999.0	M Percid as entry to 985.0, sub str. 45% sul. 43% Pb 2% Cp Ni .75% Cu .6%	F251923	2.3	.28	.59	.87		4.24	40.42	44.66
1009.0	MW Percid as entry to 985.0, 7% Po MUVW	F251924	10.0	.08	.24	.32		5.04	42.82	47.86
1014.0	MW Percid as entry to 985.0, 4% Po MUVW	F251925	5.0	.09	.28	.37		5.49	44.22	49.71
1014.0	End of hole									
	Hole started July 20 1964						Acid Tests			
	Hole completed Aug 1 1964						0' - 65°00'			
	Drilled by Marisette Diamond Drilling Ltd						25' - 63°30'			
	Hole size: AXT						200' - 61°30'			
	Casing left in						400' - 59°00'			
	Hole plugged						600' - 56°45'			
	Logged by G.J Koleszar						800' - 53°15'			

THE INTERNATIONAL NICKEL CO. OF CANADA, LIMITED

PROPERTY NEMISCAU ANOM 12-20

SAMPLING RECORD

SHEET NO. 8

C13 Cert 204615 475'W & 530'S of Post no 1

CO-ORDINATES

HOLE NO. 25374 DEPTH 1014 ANGLE -65° STRIKE S ELEVATION

22+00W 7+12N

DEPTH FEET	FORMATION	SAMPLE NO.	LENGTH FT.	ANALYSIS			LENGTH FEET	PROGRESSIVE TOTALS		
				COPPER %	NICKEL %	CU. & NI. %		FEET X PER CENT		
								COPPER	NICKEL	CU. & NI.
LOG SUMMARY										
0.0	Collar									
22.0	Casing									
128.3	Feld. porphyry									
134.3	Greenstone									
135.0	Pegmatite									
180.6	Feld. porphyry									
206.5	Greenstone									
252.3	Metased, banded amp bioptr rock									
258.0	Feld. porphyry									
354.2	Greenstone as entry to 206.5									
356.4	Pegmatite, pink									
399.4	Greenstone as entry to 206.5									
421.5	Gneiss									
460.4	Greenstone as entry to 206.5									
497.3	Gneiss									
510.5	Greenstone									
606.4	Gneiss									
610.7	Metased									
657.6	Gneiss as entry to 606.4									
670.5	Greenstone									
695.0	Metased.									
701.8	Greenstone ✓									
707.1	Metased. as entry to 695.0									
708.8	Pegmatite, pink									
736.2	Metased as entry to 695.0									
786.9	Greenstone									
787.9	Pegmatite, pink									
789.1	Greenstone as entry to 786.9									
801.6	Metased, variable comp.									
806.6	Amphibolite									
820.0	Chlorite amp schist									
830.0	Talc chlorite amp schist									
976 970.9	Pecid, grey									
1014.0	Pecid, sooty black, ash strc. P. mineralization									
1014.0	End of hole									

Hole started July 20 1964
 Hole completed Aug 1 1964
 Drilled by Marisette Diamond Drilling Ltd
 Hole size: AXT
 Casing left in
 Hole plugged
 Logged by G.J. Koleszar

Tests

0'	65°00'
25'	63°30'
200'	61°30'
400'	59°00'
600'	56°45'
800'	53°15'

THE INTERNATIONAL NICKEL CO. OF CANADA, LIMITED

PROPERTY NEMISCAU ANOM 12-20

SAMPLING RECORD

SHEET NO. 5

Cl3 Sect 204615 545'E & 725'S of Post no 4

CO-ORDINATES

HOLE NO. 25375 DEPTH 937.0 ANGLE -65° STRIKE S ELEVATION

26+00 W 5+50 N

DEPTH FEET	FORMATION	SAMPLE NO.	LENGTH FT.	ANALYSIS			LENGTH FEET	PROGRESSIVE TOTALS FEET X PER CENT		
				COPPER %	NICKEL %	CU. & NI. %		COPPER	NICKEL	CU. & NI. Total Pct.
637.5	Gneiss as entry to 572.5									
638.2	L.C.									
639.3	Gneiss as entry to 572.5									
640.0	L.C.									
643.8	Gneiss as entry to 572.5									
644.4	L.C.									
645.0	Gneiss as entry to 572.5									
648.3	L.C.									
650.6	Gneiss as entry to 572.5									
652.7	L.C.									
655.7	Gneiss as entry to 572.5, unqgn in part, dense f.g. banded near contact with next entry, all above entries of gneiss contain spks Py									
663.2	Amphibolite, m.g., green-black, strs epidote & pink feld(R), carb. str, spks Py									
663.7	L.C.									
679.7	Gneiss, light grey, m.g., qtz feld (white & pink) amp epidote bio, banded for last 2' of entry, fol weak at 45°/core, spks Py									
693.6	Chlorite-amp schist, green, m.g., felted crystalline, sh'd in places, fol 40°/core	F251932	13.9	.01	.06	.07	.14	.83	.97	
697.4	Talc chlorite-amp schist, m.g., grey-green, felted crystalline rocks, no fol, weakly mag to mag, spks magnetite	F251933	3.8	.01	.07	.08	.18	1.10	1.28	
705.0	Perid. dark grey, f.g., serpld, dense, mag, small clusters amp crystals give speckled appearance to rock, spks magnetite	F251934	7.6	.01	.13	.14	.25	2.09	2.34	

THE INTERNATIONAL NICKEL CO. OF CANADA, LIMITED

PROPERTY NEMISCAU ANOM 12-20

SAMPLING RECORD

SHEET NO. 6

C13 Cont 204615 545'E & 725'S of Post no 4

CO-ORDINATES

HOLE NO. 25375 DEPTH 9370 ANGLE -65° STRIKE S ELEVATION

26+00W 5+50N

DEPTH FEET	FORMATION	SAMPLE NO.	LENGTH FT.	ANALYSIS			LENGTH FEET	PROGRESSIVE TOTALS			Total Feet
				COPPER	NICKEL	CU. & NI.		FEET X PER CENT			
				%	%	%		COPPER	NICKEL	CU. & NI.	
715.0	Perid. as to previous entry	F251935	10.0	.01	.15	.16		.35	3.59	3.94	
725.0	Perid. as entry to 705.0, carb strs, spks Cp on shear face at 720.0	F251936	10.0	.01	.16	.17		.45	5.19	5.64	
735.0	Perid. as entry to 705.0, spks Py on shear planes	F251937	10.0	.02	.17	.19		.65	6.89	7.54	
745.0	Perid. as entry to 705.0, spks Py on shear planes	F251938	10.0	.01	.21	.22		.75	8.99	9.74	
755.0	Perid. as entry to 705.0, spks Py on shear planes	F251939	10.0	.01	.19	.20		.85	10.89	11.74	
765.0	Perid. as entry to 705.0, few hairline asb strs	F251940	10.0	.01	.21	.22		.95	12.99	13.94	
775.0	Perid. as entry to 705.0, few hairline to 1/16" asb strs	F251941	10.0	.01	.20	.21		1.05	14.99	16.04	
787.6	Perid. as entry to 705.0, asb strs hairline to 1/8"	F251942	12.6	.01	.42	.43		1.18	20.28	21.46	
791.5	Chlorite amp schist, grey-green bio present, resp'd, mag, spks magnetite	F251943	3.9	.02	.04	.06		1.25	20.44	21.69	
795.0	MuW Perid, fig, sooty black, waxy, mag, resp'd, asb strs hairline to 1/8" shear zone with white slip fibre at 793.0, spks magnetite, 3% Po	F251944	3.5	.01	.06	.07		1.29	20.65	21.94	
800.0	MuW Perid as to previous entry MuW about 30 asb strs hairline to 1/16", 2% Po < 1%	F251945	5.0	.03	.15	.18		1.44	21.40	22.84	
804.8	MuW Perid as entry to 795.0 MuW small shear at 802.5, about 75 asb strs hairline to 1/8" 2% Po < 1%	F251946	4.8	.05	.19	.24		1.68	22.31	23.99	
806.6	MS Perid as entry to 795.0. Pn visible as eyes & strs in Po, 75% Po ✓ Est 15% Ni Cp also prts. 0.5%	F251947	1.8	.20	1.16	1.36		2.04	24.40	26.44	

THE INTERNATIONAL NICKEL CO. OF CANADA, LIMITED

PROPERTY NEMISCAU ANOM 12-20

SAMPLING RECORD

SHEET NO. 7

C13 Sect 204615 545'E & 725'S of Post no 4

CO-ORDINATES

HOLE NO. 25375 DEPTH 937.0 ANGLE -65° STRIKE S ELEVATION

26+00W 5+50N

DEPTH FEET	FORMATION	SAMPLE NO.	LENGTH FT.	ANALYSIS			LENGTH FEET	PROGRESSIVE TOTALS FEET X PER CENT		
				COPPER	NICKEL	CU. & NI.		COPPER	NICKEL	CU. & NI.
				%	%	%				
811.8	MoW Perid as entry to 795.0, "v/v" about 15 ash strc hairline to 1/8", 2% Po < 1%	(Total of about 2 2/3' 33% cross fibre asbestos) F251948	5.2	.03	.29	.32		2.20	25.91	28.11
820.0	Perid as entry to 795.0, about 50 ash strc hairline to 1/16"	F251949	8.2	.03	.22	.25		2.44	27.71	30.15
830.0	Perid. as entry to 795.0, about 30 ash strc hairline to 1/16"	F251950	10.0	.02	.15	.17		2.64	29.21	31.85
840.0	Perid as entry to 795.0, about 50 ash strc hairline to 1/4"	F251951	10.0	.03	.19	.22		2.94	31.11	34.05
850.0	Perid as entry to 795.0, serpen tinite in part	F251952	10.0	Nil	.04	.04			31.51	34.45
863.7	Perid as entry to 795.0, fq-mg, felted crystalline amp schist in part, magnetic to weakly magnetic, 2 ash strc at 860.0 spks magnetite, schistose & with bio at contact with next entry	F251953	13.7	Nil	.19	.19			34.11	37.05
866.0	Metased, white, fq. qtz, massive									
874.5	Talc chlorite amphibole schist, mg, grey-green, serpid, mag to weakly mag, felted crystalline rock, spks & strc magnetite	F251954	8.5	Nil	Nil					
878.0	Chlorite amp schist, grey, fq-mg sh'd film Co on one shear face, spks magnetite	F251955	3.5	.06	.13	.19		3.15	34.57	37.72
888.9	Perid, dark grey, serpid, mag, fq, about 60 ash strc hairline to 1/8" at 45°/core, also get faint fol at 45° /core, carb vein near end of entry	F251956	10.9	Nil	.24	.24			37.18	40.33

THE INTERNATIONAL NICKEL CO. OF CANADA, LIMITED

PROPERTY NEMISCAU ANOM 12-20

SAMPLING RECORD

SHEET NO. 8C13 Cert 204615 545'E & 725'S of Post no 4

CO-ORDINATES

HOLE NO. 25375 DEPTH 937.0 ANGLE -65° STRIKE S ELEVATION _____26+00W S+50N

DEPTH FEET	FORMATION	SAMPLE NO.	LENGTH FT.	ANALYSIS			LENGTH FEET	PROGRESSIVE TOTALS FEET X PER CENT		
				COPPER %	NICKEL %	CU. & NI. %		COPPER	NICKEL	CU. & NI.
898.4	Amp bio rock, schistose in part & in places resembling rock of previous entry, green, f.g.-m.q., spks & str mag- netite, small metased band at 894.0, banded at con- tact with next entry, fol 45°/core	F251957	9.5	Nil	.13	.13	3.15	38.42	41.57	
937.0	Metased, f.g., grey, bio qtz amp feld, mainly impure qtz with some banded amp-bio rock, fol 45°/core sh'g in some places where amp occurs with occ spks Po & rare Cp at these places especially between 920.0- 925.0									
937.0	End of hole									
Hole started Aug 3 1964 Hole completed Aug 15 1964 Drilled by Morissette Diamond Drilling Ltd Hole size: AXT Casing left in Hole plugged Logged by G.J. Koleszar Tests: 0' - 65° 20' - 64°45' 200' - 60°15' 400' - 55° 600' - 49° 880' - 50°										

THE INTERNATIONAL NICKEL CO. OF CANADA, LIMITED

✓ R.D.B. ✓

PROPERTY NEMISCAU ANOM 14-1B

SAMPLING RECORD

SHEET NO. 1

C12 Sect 209260 200' E & 560' N of Post no 3

CO-ORDINATES

HOLE NO. 25376 DEPTH 433.0 ANGLE - 55° STRIKE S ELEVATION

44+00E 5+40S

DEPTH FEET	FORMATION	SAMPLE NO.	LENGTH FT.	ANALYSIS			LENGTH FEET	PROGRESSIVE TOTALS		
				COPPER	NICKEL	CU. & NI.		FEET X PER CENT		
				%	%	%		COPPER	NICKEL	Total Pm's
0.0	Collar									
12.0	Casing, bedrock at 8.0 overburden sand & boulders									
83.5	Metased., grey to green, m.g., bio amp qtz feld, garnet iferous in part, composition varies from qtz-amp gneiss to ga-bio schist, bands qtz to 6" wide some with spks Po & Cp, qtz veins to 1" wide fol 55°/core, spks Po & Cp at 43.0 & 72.3, occ spks Py									
119.5	Garnet-bio schist, grey, m.g., bio qtz ga, bands qtz, fol 70°/core, occ. spks Py, rare Po, film Cp on fracture at 112.0									
151.0	Quartzite, f.g., grey, at start of entry get bio impurity, first 10' of entry shield & fract'd, rock massive or has variable fol, Py at film on fractures, occ spks Po, last foot of entry fract'd									
157.2	MvW Impure qtz, f.g., grey, bio impurity, str carb at 155.0, 1% Po Py, trace Cp	F234879	6.2	.01	.02	.03				Nil
165.0	MvW Amphibolite, green, m.g., felted crystalline rock with masses of bio, schistose at start of entry, 65° with blebs Po, spks Po further on entry also, str carb, fol 50°/core, 71% Po	F234880	7.8	.02	.05	.07				Nil

THE INTERNATIONAL NICKEL CO. OF CANADA, LIMITED

PROPERTY NEMISCAU ANOM 14-1B

SAMPLING RECORD

SHEET NO. 4

C12 Sect 209260 200'E & 560'N of Post no 3

CO-ORDINATES

HOLE NO. 25376 DEPTH 433.0 ANGLE -55° STRIKE S ELEVATION

44+00E 5+40S

DEPTH FEET	FORMATION	SAMPLE NO.	LENGTH FT.	ANALYSIS			LENGTH FEET	PROGRESSIVE TOTALS		
				COPPER	NICKEL	CU. & NI.		FEET X PER CENT		
				%	%	%		COPPER	NICKEL	CU. & NI.
LOG SUMMARY										
0.0	Collar									
12.0	Casing, bedrock at 8.0									
83.5	Metased.									
119.5	Garnet-bio schist									
151.0	Quartzite									
157.2	Impure quartzite, muvw									
177.4	Amphibolite, mew-muvw									
179.6	Talc chlorite schist, muvw									
185.0	Amphibolite, magnetite, muvw									
189.0	Talc chlorite schist									
199.0	Amphibolite, mew-muvw									
224.6	Amphibolite									
327.7	Metased.									
331.6	Metased, mew									
344.6	Metased									
351.6	Pegmatite, white									
360.8	Metased									
380.0	Greenstone, muvw									
433.0	Greenstone									
433.0	End of hole									
Hole started Aug 29 1964										
Hole completed Sept 1 1964										
Drilled by Morissette Diamond Drilling Ltd.										
Hole size: AXT										
Casing left in										
Hole not plugged										
Logged by G. J. Koleszar										
				Acid Tests:						
				0' - 55°						
				12' - 52° 15'						
				200' - 49° 30'						
				400' - 45° 15'						

THE INTERNATIONAL NICKEL CO. OF CANADA, LIMITED

V.P.D.B. ✓

PROPERTY NEMISCAU ANOM 14-1B

SAMPLING RECORD

SHEET NO. 1

C12 Sect 209260 600' E & 310' N of Post no 3

CO-ORDINATES

HOLE NO. 25377 DEPTH 415.0 ANGLE -55° STRIKE 5 ELEVATION

48+00E 7+90S

DEPTH FEET	FORMATION	SAMPLE NO.	LENGTH FT.	ANALYSIS			LENGTH FEET	PROGRESSIVE TOTALS		
				COPPER	NICKEL	CU. & NI.		FEET X PER CENT		Total Pm's
				%	%	%		COPPER	NICKEL	
0.0	Collar									
12.0	Casing, bedrock at 4.0, overburden sand & boulders									
122.0	Metased., light grey, m.g., bio qtz feld, minor amp, qtz veins with spls Po in some, qtz bands to 1' wide schistose in part, occ spls Py on fractures, fol 55°/core									
127.0	Metased as to previous entry	F255701	5.0	.02	.02	.04				Nil
130.7	Mw Hornblende, black, m.g., minor qtz bio, fol 75°/core 10% sulph, 5% Asp, 3% Po, 2% Py, >1% Cp	F255702	3.7	.05	.02	.07		Au..002		.002
135.0	Mw Amphibolite, green, m.g., feld crystalline rock, minor bio, 1% Po Asp Py	F255703	4.3	.02	.07	.09				Nil
145.0	Mw Amphibolite as to pre- vious entry, >1% Po	F255704	10.0	.01	.09	.10				Nil
151.9	Mw Amphibolite as entry to 135.0, near end of entry get small qtz bands, >1% Po Py Cp	F255705	6.9	.02	.06	.08				Nil
156.9	Mw Gte, f.g., light grey, carb stcs, 12% sulph, 7% Po, 4% Py, 1% Cp	F255706	5.0	.04	.05	.09				Nil
162.7	Mw Amphibolite as entry to 135.0, >1% Py Asp Po Cp	F255707	5.8	.01	.01	.02				Nil
164.1	Mw Amphib. as entry to 135.0, 7% Asp	F255708	1.4	.01	.02	.03		Au..003		.003
170.0	Amphibolite as entry to 135.0, occ spls Asp Po Py	F255709	5.9	.02	.02	.04				Nil

THE INTERNATIONAL NICKEL CO. OF CANADA, LIMITED

PROPERTY NEMISCAU ANOM 11-2

SAMPLING RECORD

SHEET NO. 2

C12 Cert 204260 600'E & 310'N of Post no 3

CO-ORDINATES

HOLE NO. 25377 DEPTH 415.0 ANGLE -55° STRIKE S ELEVATION

48+00E 7+90S

DEPTH FEET	FORMATION	SAMPLE NO.	LENGTH FT.	ANALYSIS			LENGTH FEET	PROGRESSIVE TOTALS		
				COPPER	NICKEL	CU. & NI.		FEET X PER CENT		Total Ppm's
				%	%	%		COPPER	NICKEL	
207.0	Amphibolite at entry to 135.0, carb. veins, qtz veins, almost f.g. in places, after 195.0 get small bands bio, occ spks Po									
283.0	Greenstone, green, m.g., qtz- amp. gneiss, minor bio, fol 75° cose, qtz veins, carb veins, almost schistose at 255 due to large amt of bio, occ spks Po									
286.6	Greenstone at to previous entry									
287.8	Qtz vein with small masses to containing spks Asp Po	F255710	4.8	.02	.02	.04				Nil
290.4	Mw Greenstone at entry to 283.0 qtz veins, 4% sulp, 2% Asp 2% Po	F255711	2.6	.02	.01	.03				trace
293.1	Mw Greenstone at entry to 283.0 7.1% Po	F255712	2.7	.01	.06	.07				Nil
294.6	Mw Greenstone at entry to 283.0 qtz veins with massive to, 1.1% sulp, 5% Asp, 5% Po, 1% Py	F255713	1.5	.01	.02	.03				trace
300.0	Greenstone at entry to 283.0 occ spks Po	F255714	5.4	.02	.01	.03				Nil
328.0	Greenstone at entry to 283.0 qtz & carb veins									
333.6	Greenstone at entry to 283.0 few spks Asp near next entry	F255715	5.6	.01	.01	.02				Nil
334.1	Mw Qtz vein with massive to, 15% sulp, 14% Asp 1% Py Cp	F255716	0.5	.01	.02	.03				Av. .018 .018

THE INTERNATIONAL NICKEL CO. OF CANADA, LIMITED

PROPERTY NEMISCAU ANOM 14-1B

SAMPLING RECORD

SHEET NO. 3

C12 Sect 209260 600'E & 310'N of Post no 3

CO-ORDINATES

HOLE NO. 25377 DEPTH 415.0 ANGLE -55° STRIKE S ELEVATION

48+00E 7+90S

DEPTH FEET	FORMATION	SAMPLE NO.	LENGTH FT.	ANALYSIS			LENGTH FEET	PROGRESSIVE TOTALS		
				COPPER	NICKEL	CU. & NI.		FEET X PER CENT		
				%	%	%		COPPER	NICKEL	OP. ENT. Total Pm's
340.0	Greenstone at entry to 283.0 qtz veins, spks Po, Asp, Py	F255717	5.9	.01	.03	.04			Nil	
392.0	Greenstone at entry to 283.0 qtz veins some with masses & crystals to, spks Po, Py, Cp in vein at 345.0, spks Asp at 361.5, 382.0, & 385.0									
397.0	Greenstone at entry to 283.0	F255718	5.0	.01	.01	.02			Nil	
399.6	Mulw Greenstone at entry to 283.0, qtz veins with masses & crystals to, 5% Asp	F255719	2.6	.01	.01	.02		Au .003	.003	
405.0	Greenstone at entry to 283.0, few spks Asp, Po near end of entry	F255720	5.4	.01	.01	.02		Au .014	.014	
415.0	Amphibolite, green, mg, schistose at start of entry stl magnetite amount- ing to 20% of rock, film Po, Py, & red iron oxide on fractures									
415.0	End of hole									
Hole started Sept 3, 1964										
Hole completed Sept 4, 1964										
Drilled by Marisette Diamond Drilling Ltd										
Hole size: AXT										
Casing left in										
Hole not plugged										
Logged by G. J. Koleszar										
				Acid Tests: 0' - 55°						
				12' - 55° 30'						
				200' - 50°						
				400' - 50° 30'						

THE INTERNATIONAL NICKEL CO. OF CANADA, LIMITED

PROPERTY NEMISCAU ANOM 11-2

SAMPLING RECORD

SHEET NO. 4

C12 Cent 209260 600'E & 310'N of Post no 3

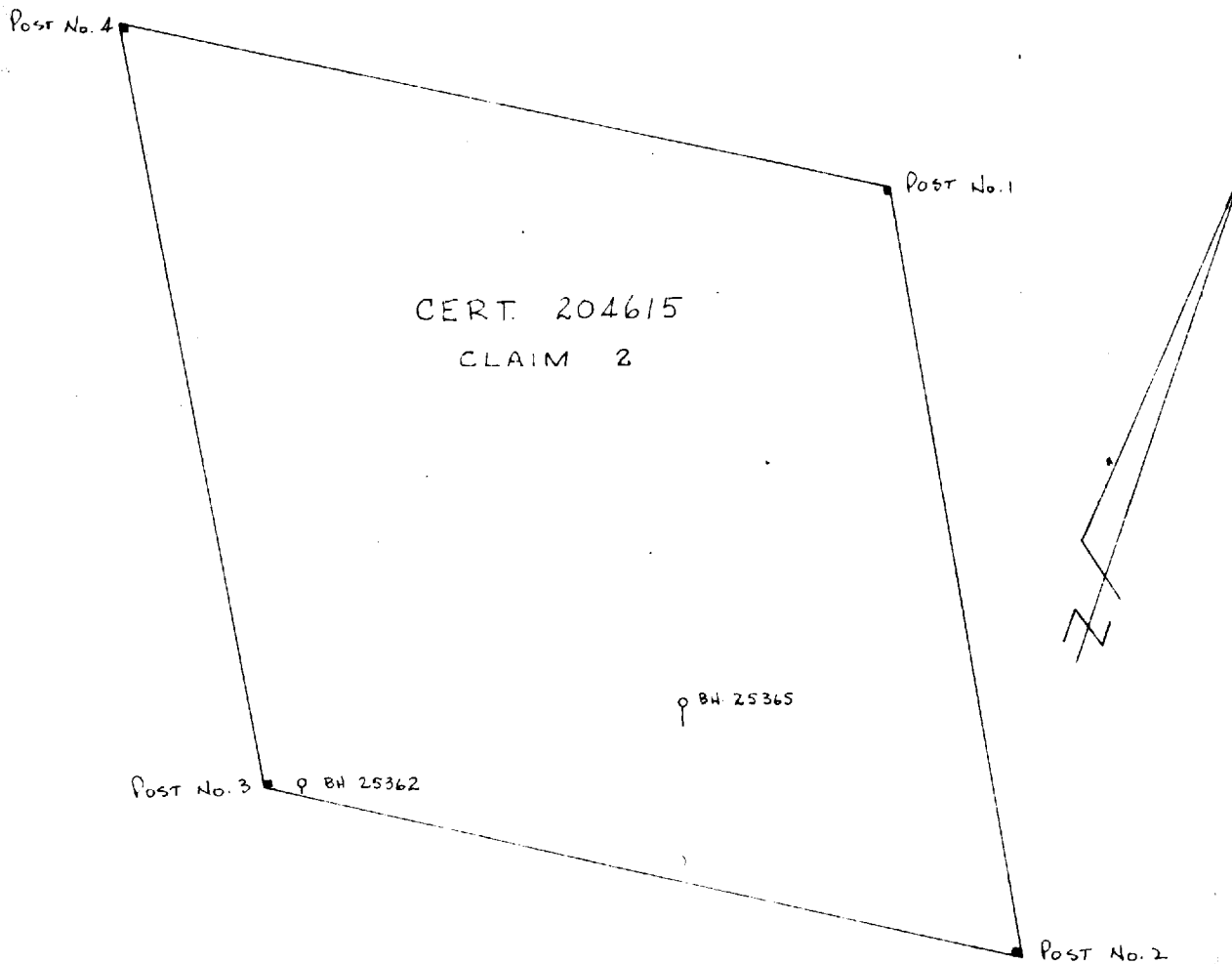
CO-ORDINATES

HOLE NO. 25377 DEPTH 415.0 ANGLE -55° STRIKE S ELEVATION

48+00 E 7+90 S

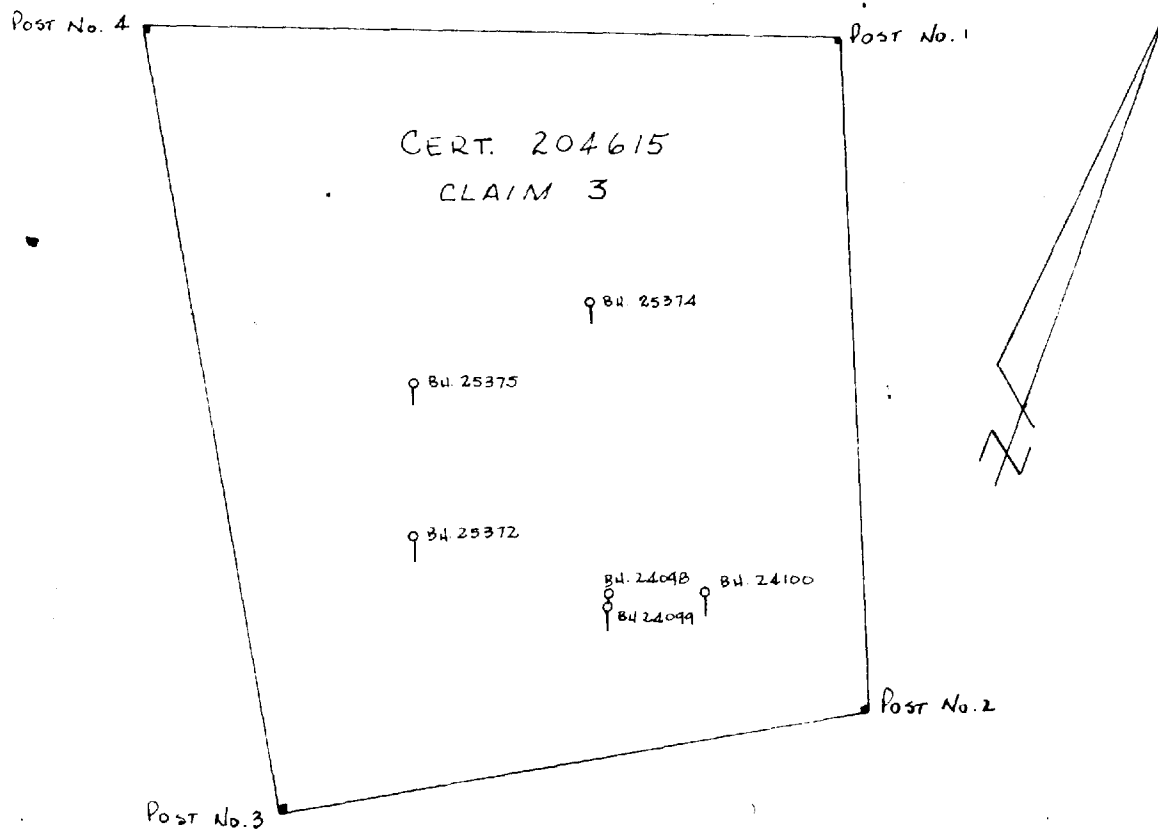
DEPTH FEET	FORMATION	SAMPLE NO.	LENGTH FT.	ANALYSIS			LENGTH FEET	PROGRESSIVE TOTALS FEET X PER CENT			
				COPPER %	NICKEL %	CU. & NI. %		COPPER	NICKEL	CU. & NI.	
	LOG SUMMARY										
0.0	Collar										
12.0	Casing, bedrock at 4.0										
127.0	Metased										
130.7	Hornblendite, mw										
151.9	Amphibolite, muvw										
156.9	Quartzite, mw										
164.1	Amphibolite, muw-muvw										
207.0	Amphibolite										
286.6	Greenstone										
287.8	Quartz vein										
294.6	Greenstone, muw-muvw										
333.6	Greenstone										
334.1	Quartz vein, mw										
397.0	Greenstone										
399.6	Greenstone, muw										
405.0	Greenstone										
415.0	Amphibolite										
415.0	End of hole										
	Hole started Sept 3 1964										
	Hole completed Sept 4 1964										
	Drilled by Marisette Diamond Drilling Ltd										
	Hole size: AXT										
	Casing left in										
	Hole not plugged										
	Logged by G. J. Koleszue										
				Acid Tests:							
							0'	55°			
							12'	55° 30'			
							200'	50°			
							400'	50° 30'			

Comté 1918-2018



LOCATION SKETCH
of DRILL HOLES: 25362
 25365
CERT. 204615 CL. 2
PROJ. TWP. 1918
SCALE: 1 INCH = 400'

Ministère des Richesses Naturelles, Québec	
SERVICE DE LA	
DOCUMENTATION TECHNIQUE	
Date:
No	GM 16857

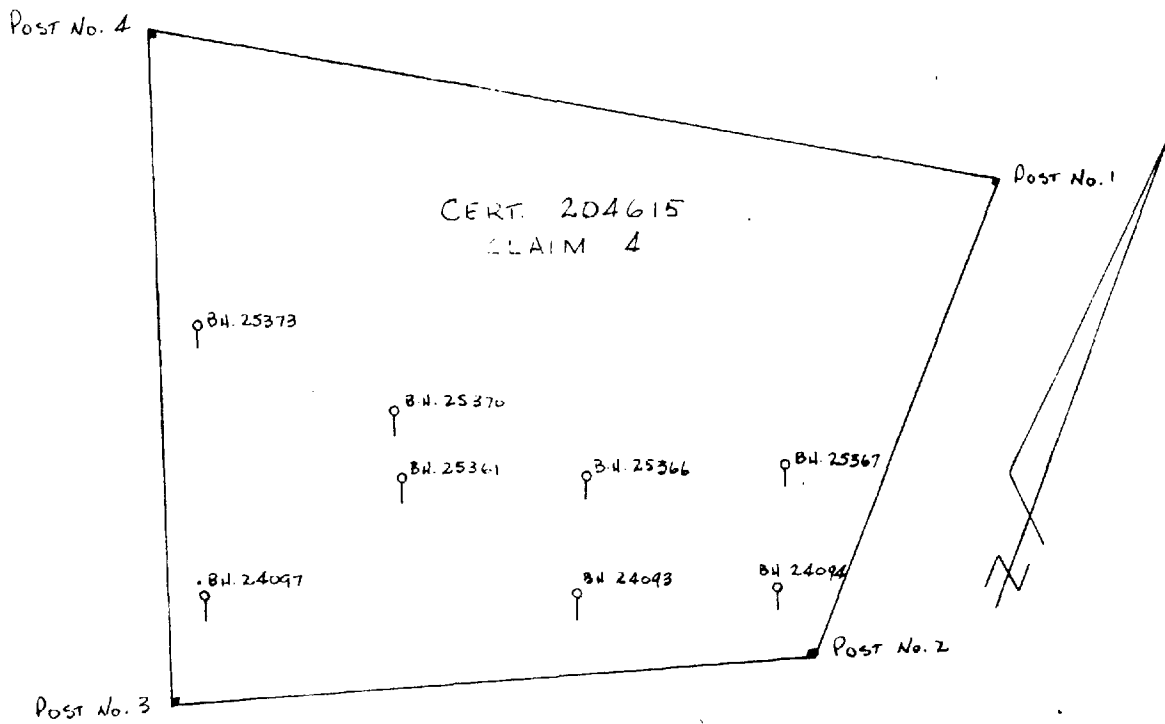


LOCATION SKETCH
 of DRILL HOLES: 24098 25372
 24099 25374
 24100 25375

CERT. 204615 CL. 3

PROJ. TWP. 1918

SCALE: 1 INCH = 400'

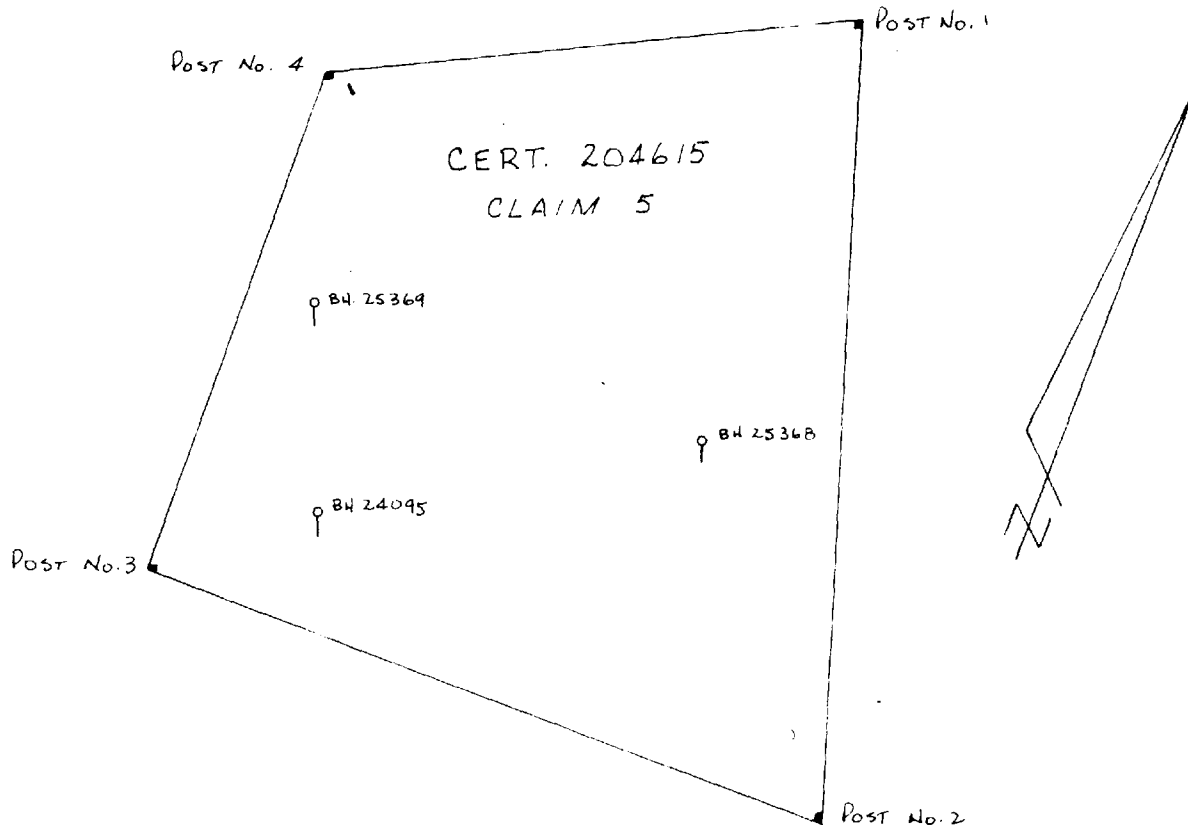


LOCATION SKETCH
of DRILL HOLES: 24093 25366
24094 25367
24097 25370
25361 25373

CERT. 204615 CL. 4

TOWNSHIP 1918

SCALE: 1 INCH = 400'



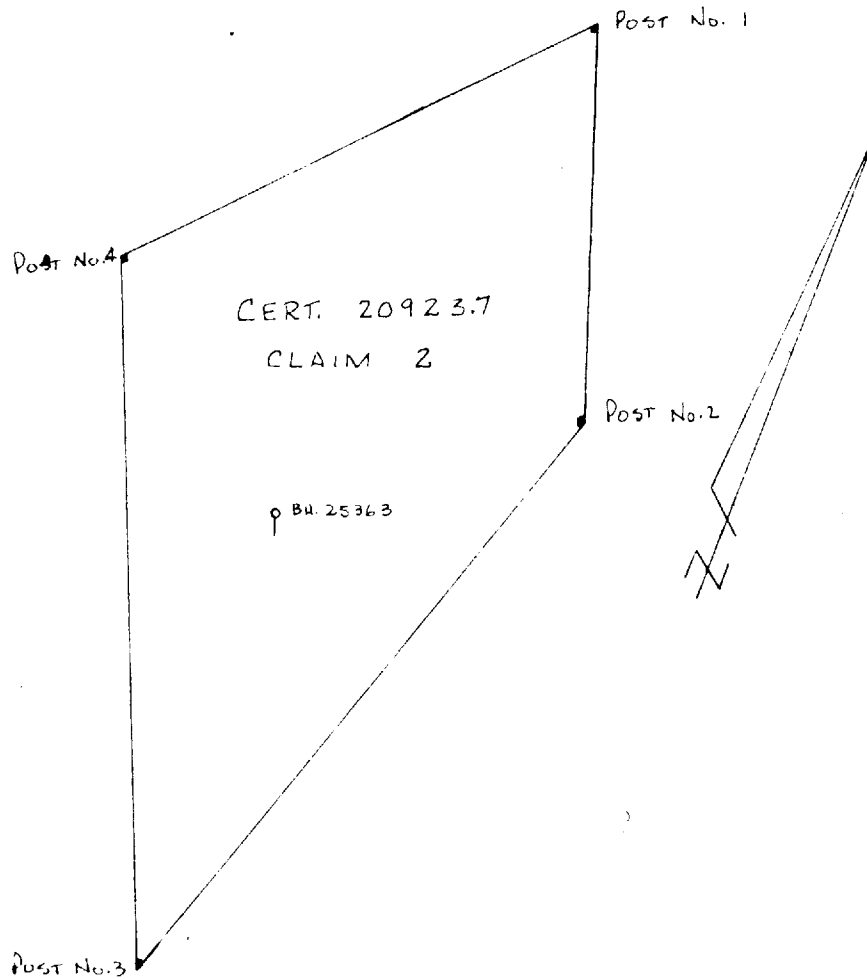
LOCATION SKETCH
 of DRILL HOLES: 24095
 25368
 25369

CERT. 204615 CL. 5

PROJ. TWP. 1918

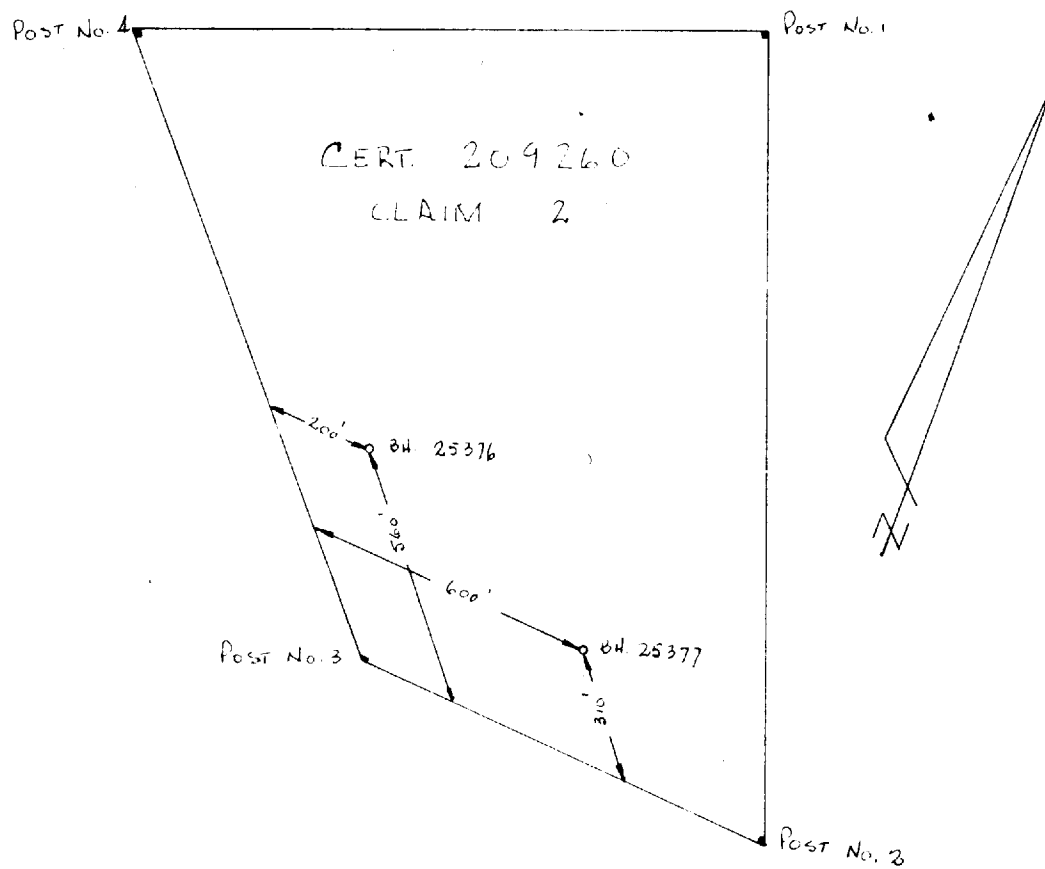
SCALE: 1 INCH = 400'

Carton 1918



LOCATION SKETCH
of DRILL HOLE: 25363
CERT. 209237 CL. 2
PROJ. TWP. 1918
SCALE: 1 INCH: 400'

Contour 2019



LOCATION SKETCH
of DRILL HOLES 25376 & 25377
CERT. 209260 CL. 2
PROJ. TWP. 2019
SCALE: 1 INCH = 400'