

QUEBEC DEPARTMENT OF MINES
MINERAL DEPOSITS BRANCH
No. Q.M. 7482-A

MAP SHOWING THE RESULTS
OF A
MAGNETOMETER SURVEY
ON
CAMP BIRD MINES, LIMITED
VASSAN TOWNSHIP, N-W QUEBEC

PUBLIC

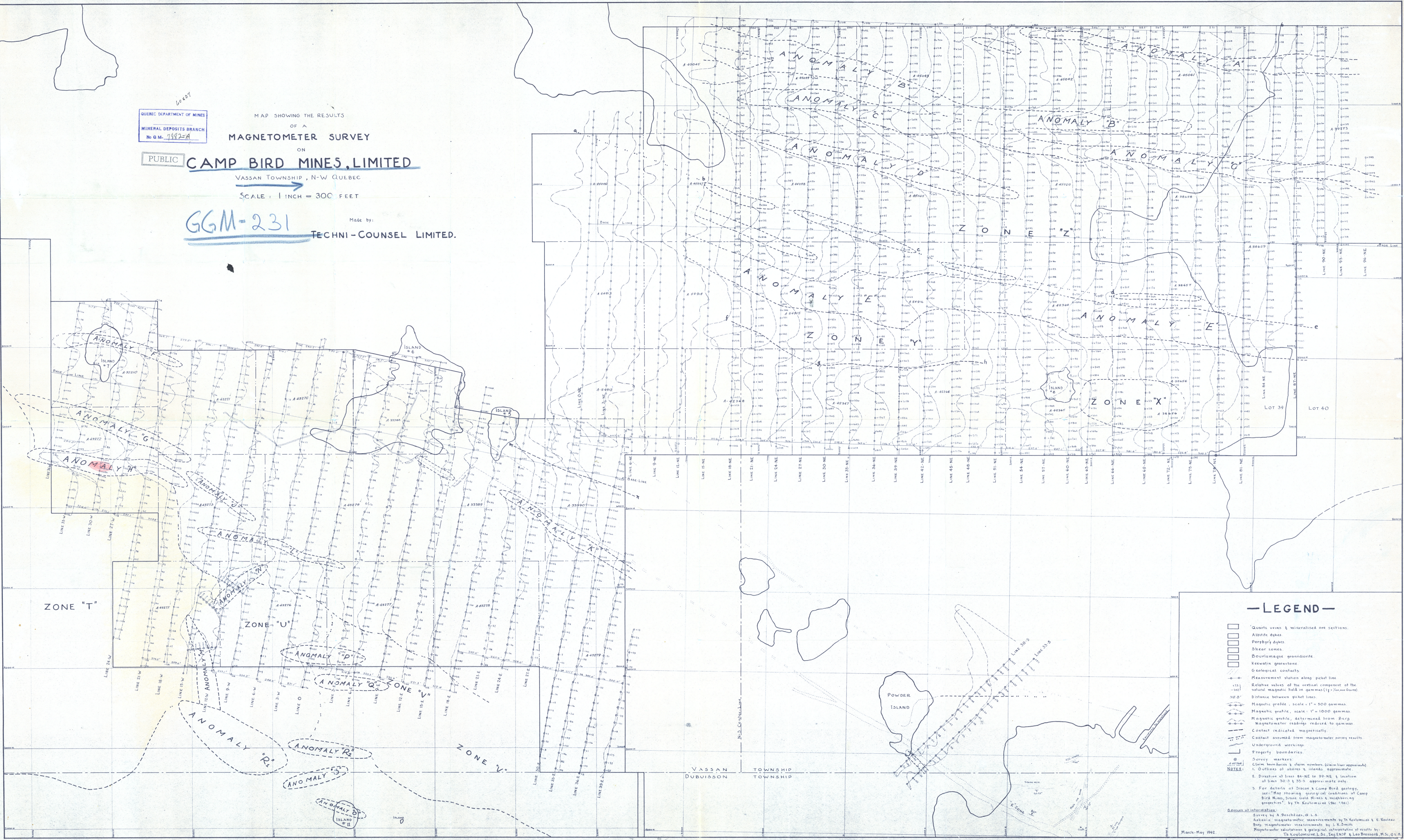
CAMP BIRD MINES, LIMITED

VASSAN TOWNSHIP, N-W QUEBEC

SCALE: 1 INCH = 300 FEET

GGM-231

Made by:
TECHNI-COUNSEL LIMITED.

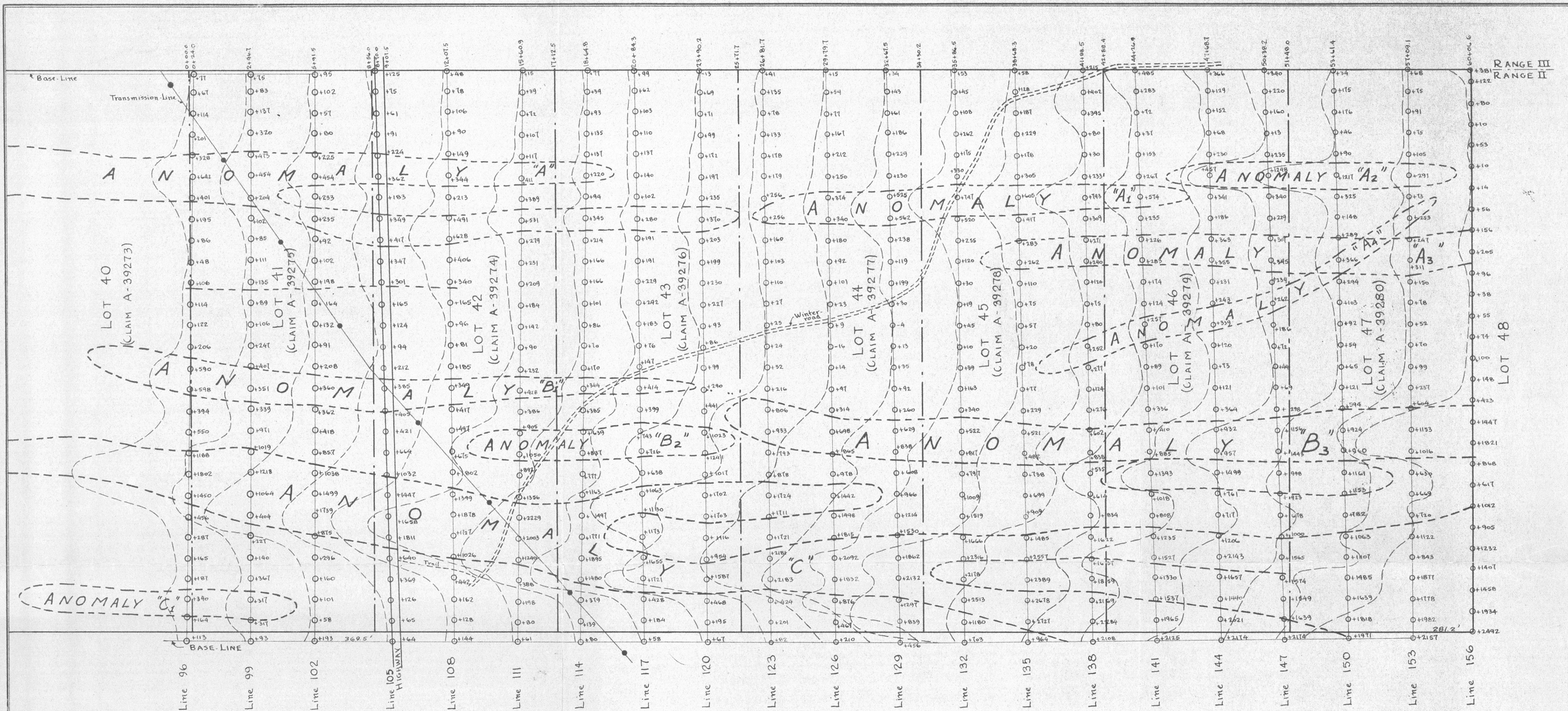


-LEGEND-

- Quartz veins & mineralized ore sections.
- Albitic dykes
- Porphyry dykes
- Shear zones
- Boullaboug granodiorite
- Keewatin greenstone
- Geological contacts
- Measurement station along picket line
- Relative values of the vertical component of the natural magnetic field in gammas (1γ = 1000 Gauss)
- Distance between picket lines
- Magnetic profile, scale 1" = 500 gammas
- Magnetic profile, scale 1" = 1000 gammas
- Magnetic profile, determined from Berg magnetometer readings reduced to gammas
- Contact indicated magnetically
- Contact assumed from magnetometer survey results
- Underground workings
- Property boundaries
- Survey markers
- Claim boundaries & claim numbers (claim lines approximate)

NOTES:
1. Outlines of shores & islands approximate.
2. Direction of lines 84-NE to 99-NE & location of lines 30-S & 35-S approximate only.
3. For details of Discom & Camp Bird geology, see "Map showing geological conditions of Camp Bird Mines, Discom Gold Mines & neighboring properties", by Dr. Kaulovmski (Dec. 1941).

Source of information:
Survey by A. Deschênes, G.L.S.
Albitic magnetometer measurements by Dr. Kaulovmski & E. Roux
Berg magnetometer measurements by J.S.M.H.
Magnetometer calculations & geological interpretation of results by:
Dr. Kaulovmski, L. St. Ingénieur & Leo Brossard, M.S., G.L.S.



PLAN SHOWING THE RESULTS

OF A

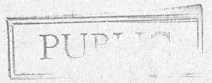
MAGNETOMETER SURVEY

ON PART OF

CAMP BIRD MINES, LIMITED

VASSAN TOWNSHIP, N-W QUEBEC

SCALE: 1 INCH = 300 FEET



Made and prepared by:

TECHNI-COUNSEL LIMITED.

GM-7882-A

— LEGEND —

- Measurement stations along picket lines.
- 15 } Relative values of the vertical component of the natural magnetic field in gammas ($1\gamma = 100,000$ Gauss).
- +227 }
- 29+19.7 Chainages along range-line.
- 281.2' Distance between picket-lines in feet.
- Magnetic profile, scale: 1" = 1000 gammas.
- Contact indicated magnetically.
- Contact assumed from magnetometer survey results.
- ┌—┐ Property boundaries.

SOURCES OF INFORMATION:

Askania magnetometer measurements and calculations by Leo Brossard.
 Geological interpretation of results by:
 TH. KOULOMZINE, L.Sc., Ing. ENSP
 & Leo Brossard, M.Sc., Q.L.S.