

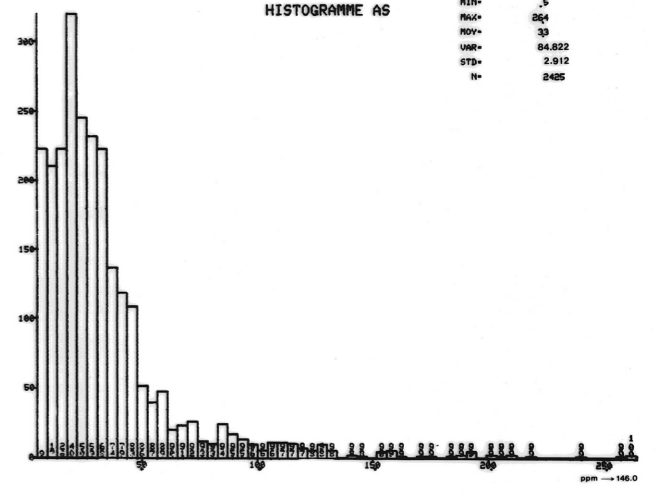
LÉGENDE

Arsenic (ppm)

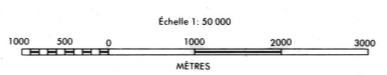
As

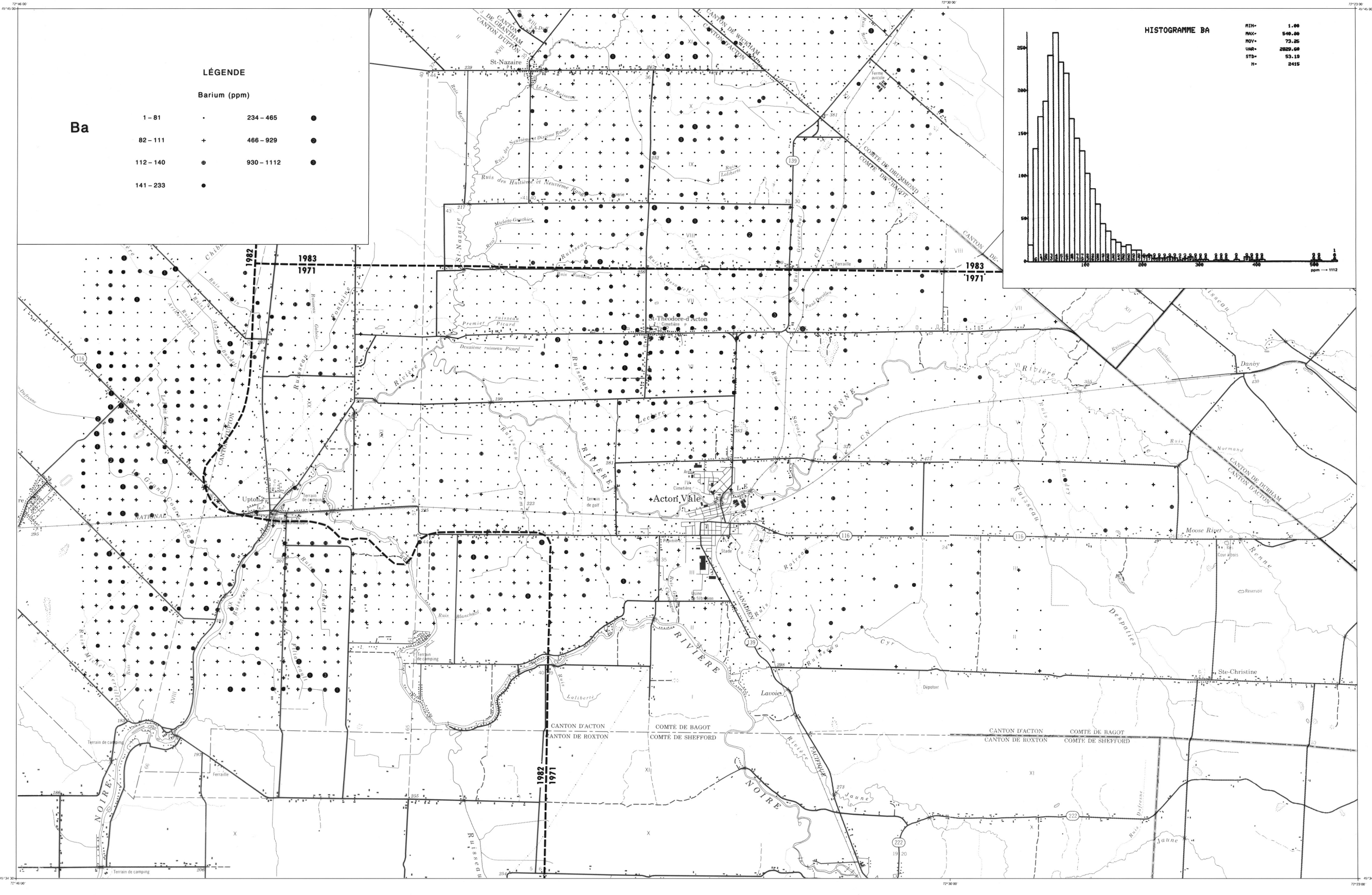
0.1 - 3.5	•	25.3 - 50.5	●
3.6 - 5.0	+	50.6 - 100.9	⊙
5.1 - 7.3	⊖	101.0 - 146.0	⊗
7.4 - 12.7	•		
12.8 - 25.2	●		

HISTOGRAMME AS



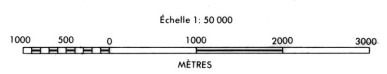
GÉOCHIMIE DES SOLS
RÉGION D'ACTON VALE
par: M. Leduc

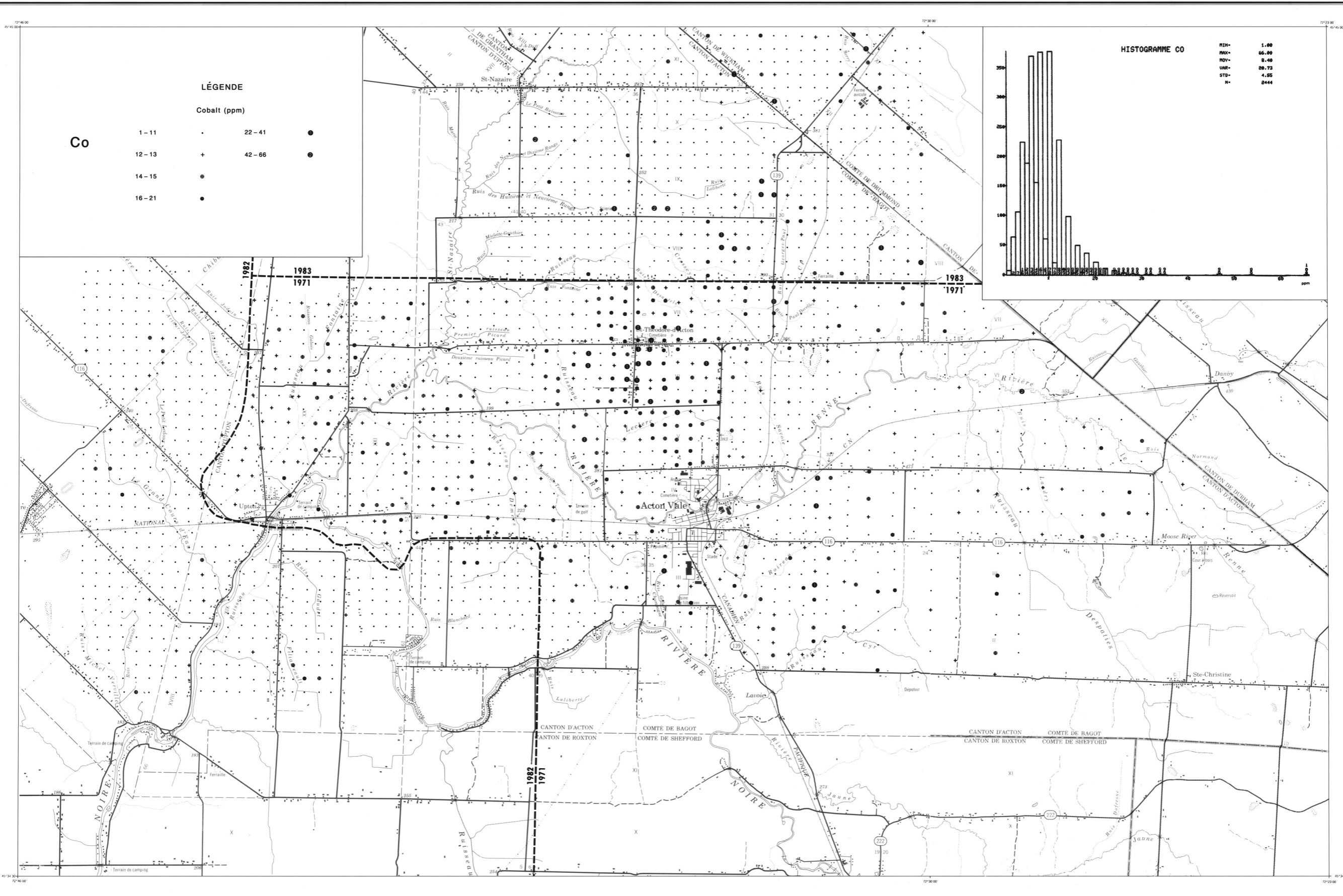




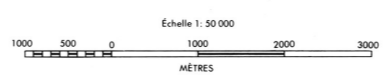
GÉOCHIMIE DES SOLS
RÉGION D'ACTON VALE

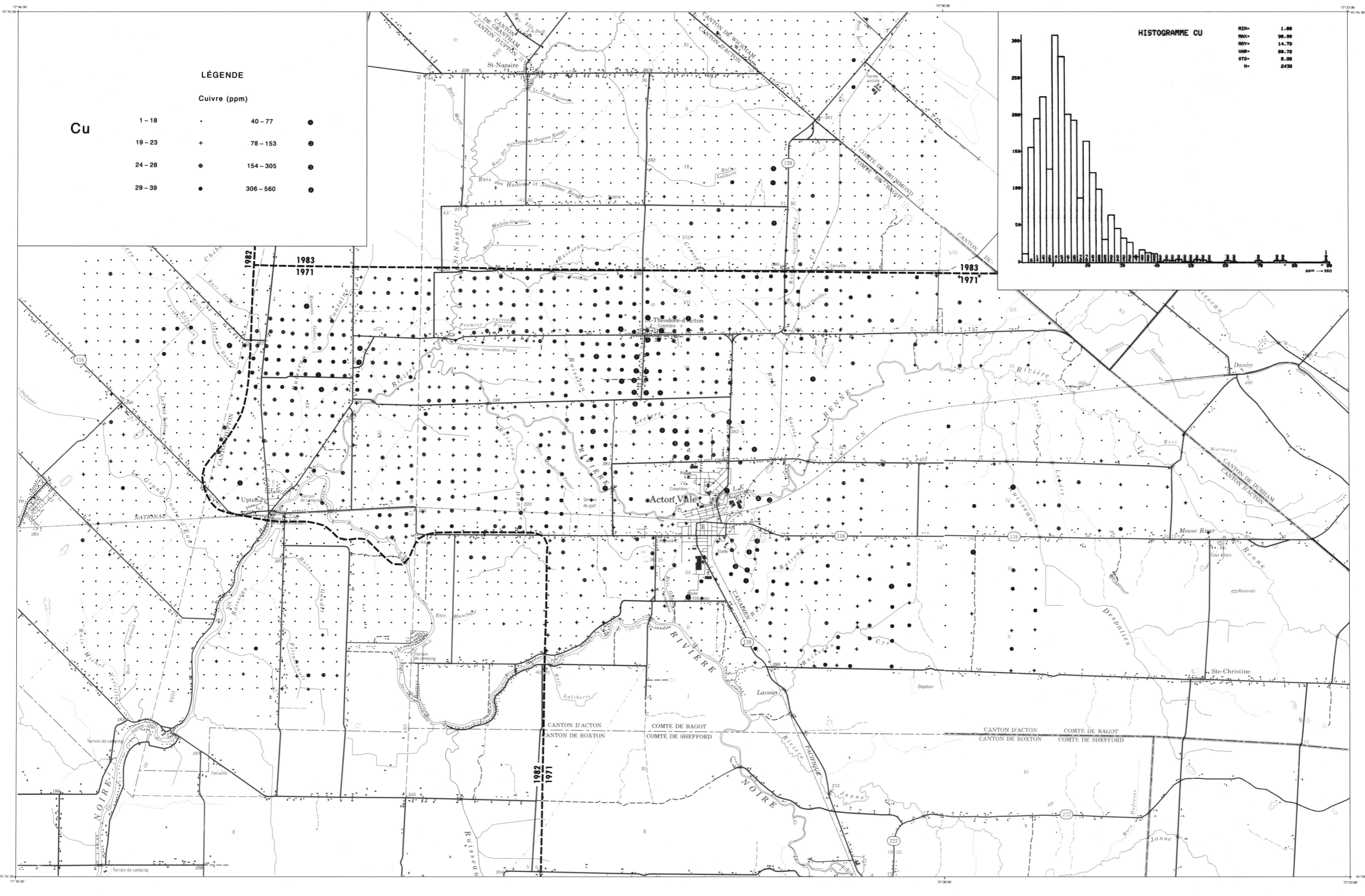
par: M. Leduc



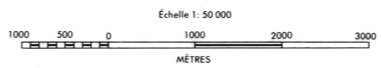


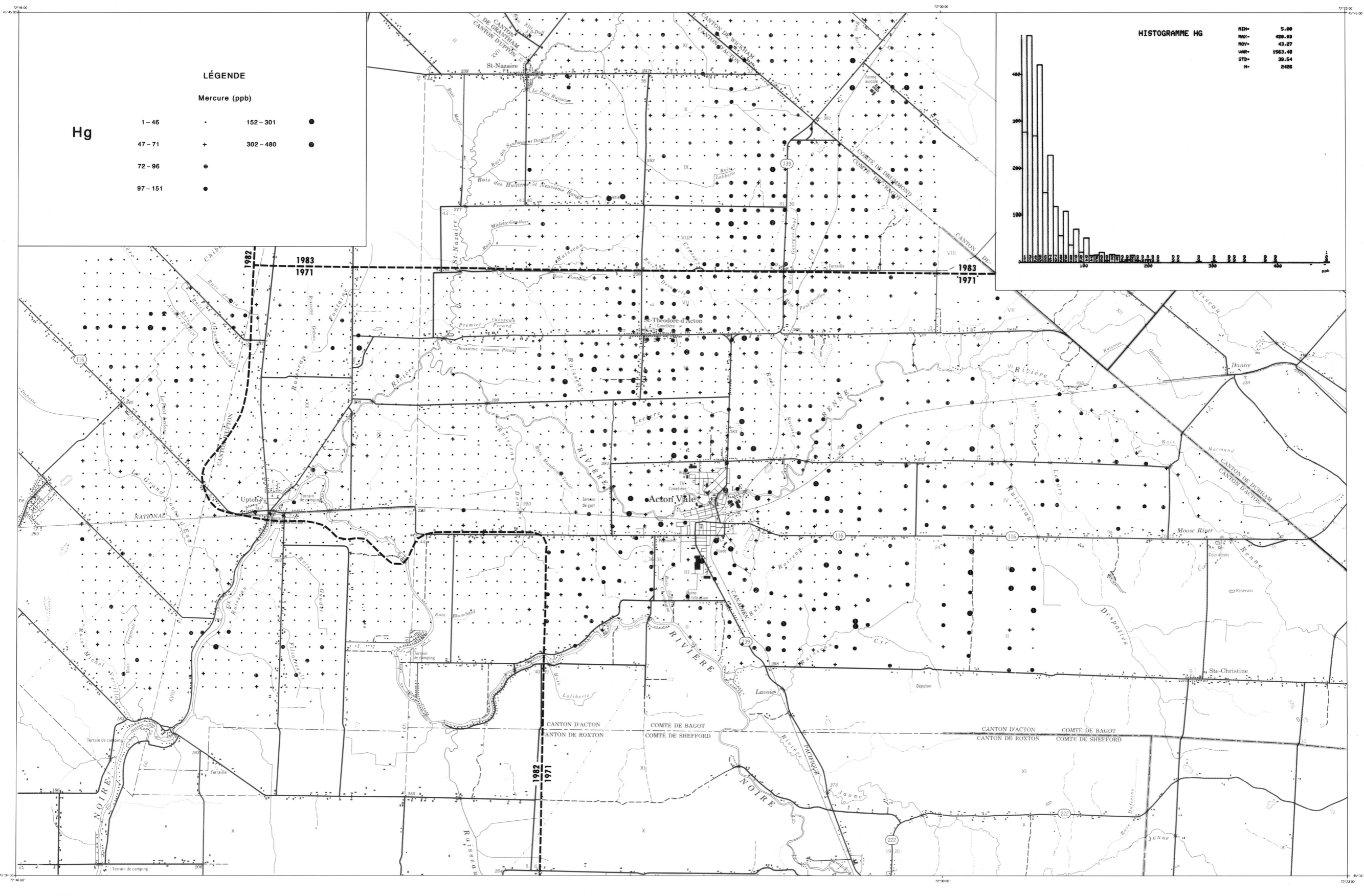
GÉOCHIMIE DES SOLS
RÉGION D'ACTON VALE
par: M. Leduc



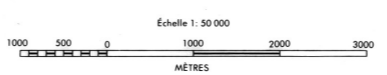


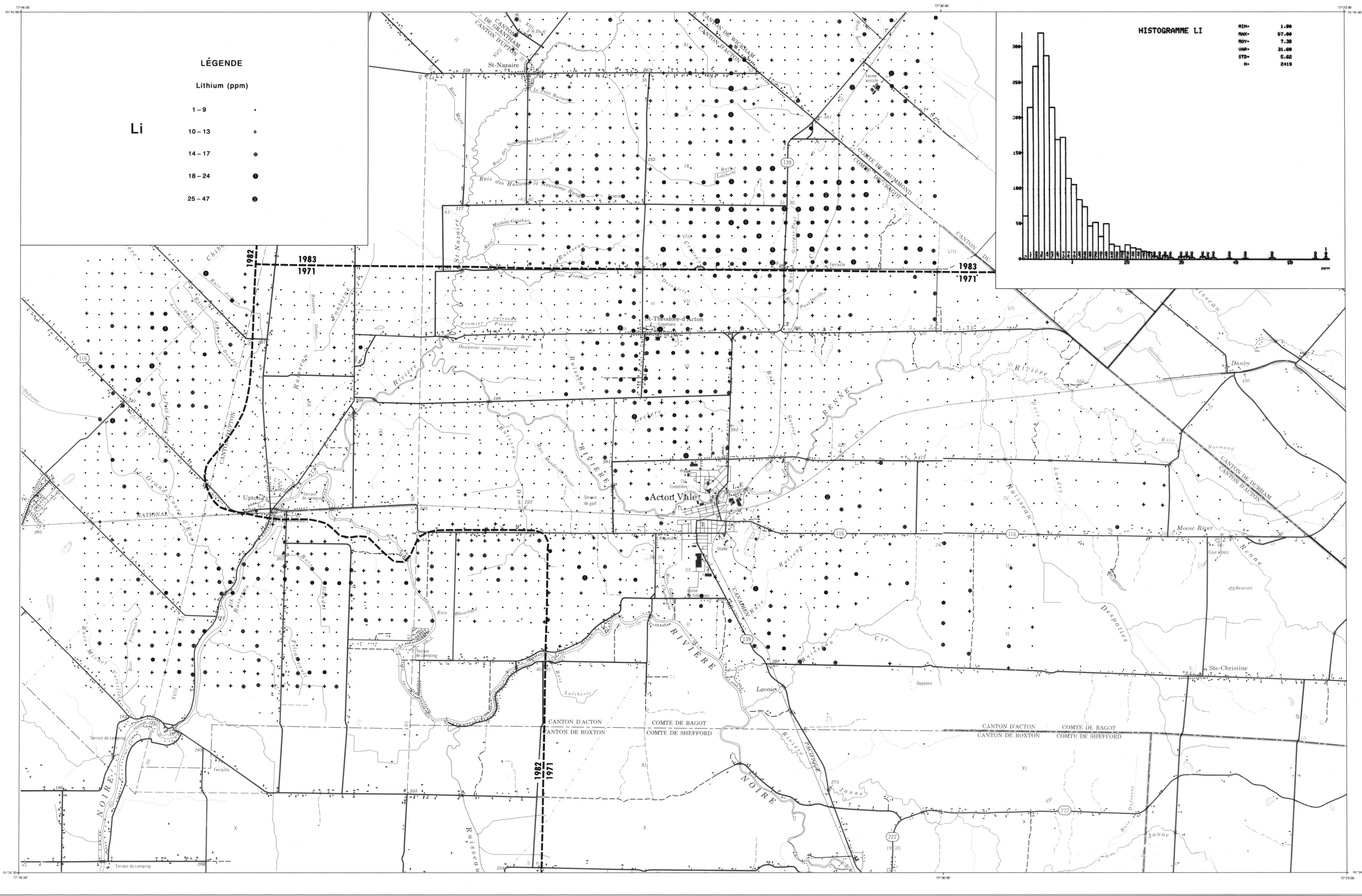
GÉOCHIMIE DES SOLS
RÉGION D'ACTON VALE
par: M. Leduc





GÉOCHIMIE DES SOLS
RÉGION D'ACTON VALE
par: M. Leduc

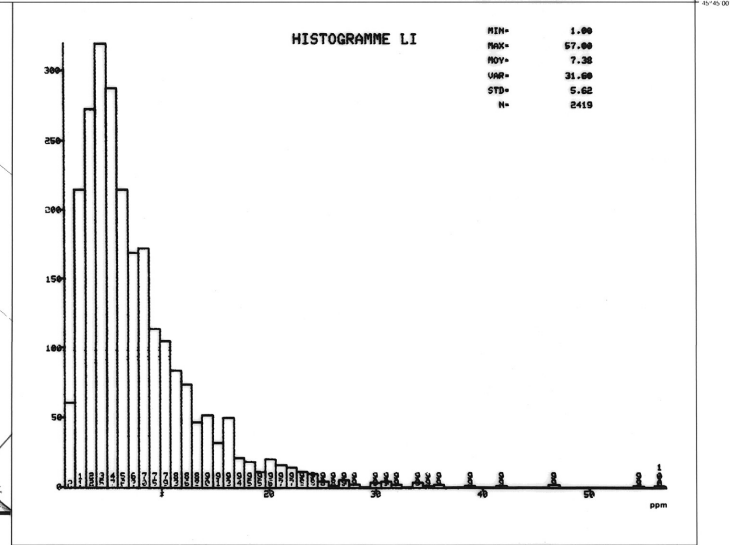




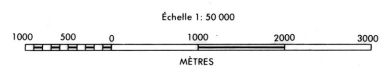
LÉGENDE

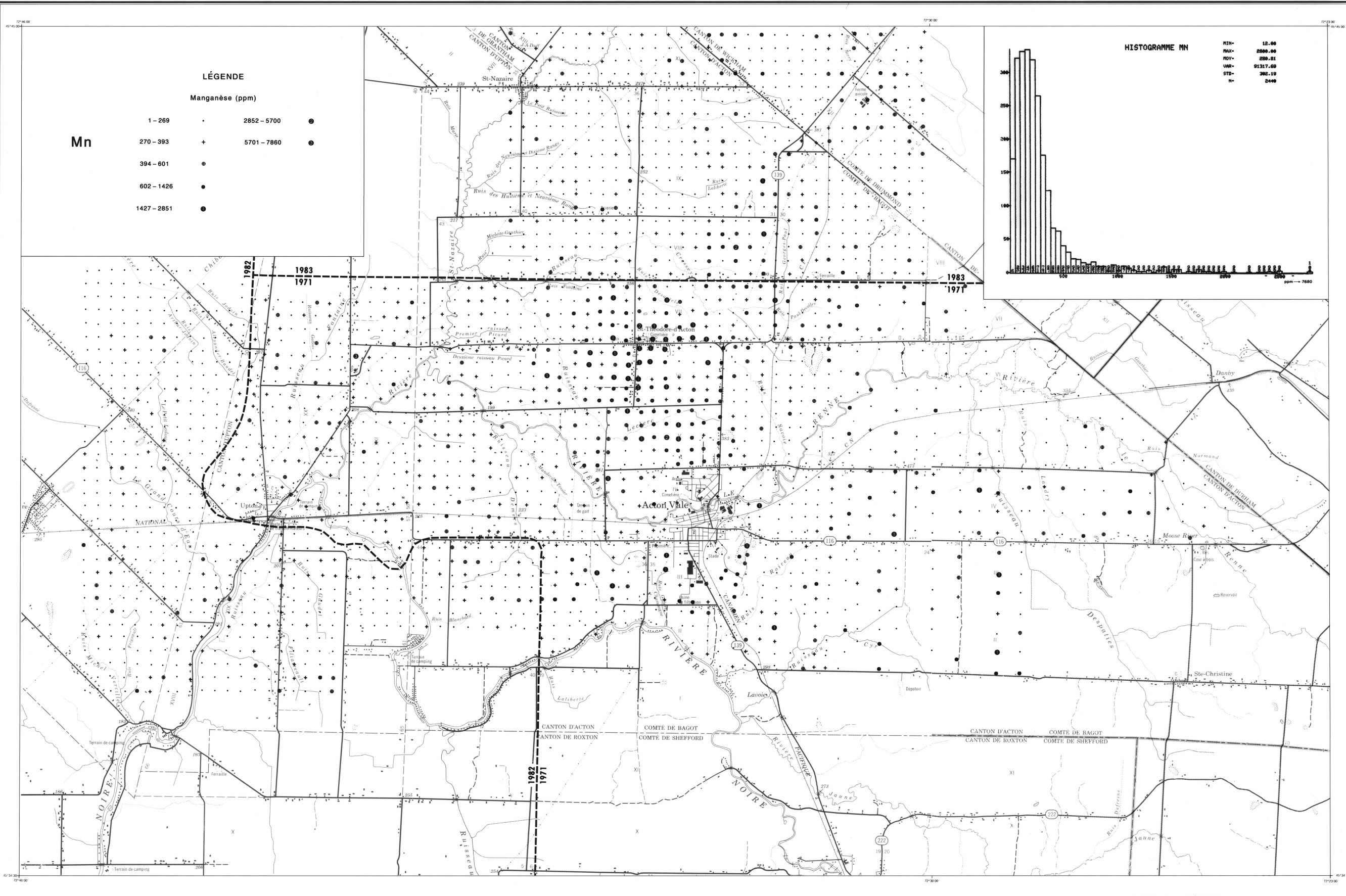
Lithium (ppm)

1-9	.
10-13	+
14-17	o
18-24	●
25-47	⊙



GÉOCHIMIE DES SOLS
RÉGION D'ACTON VALE
par: M. Leduc





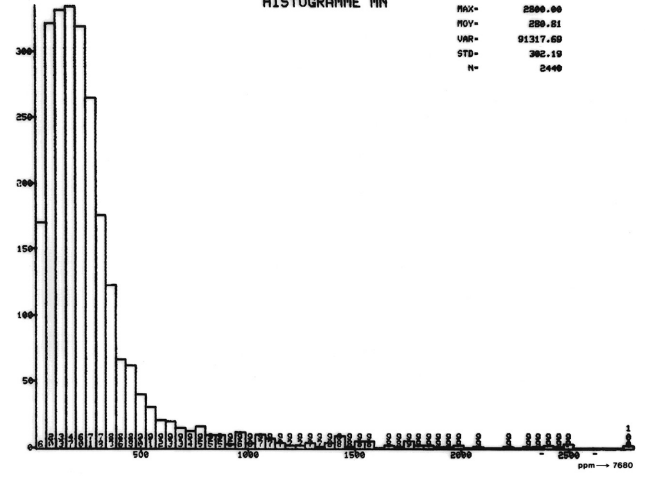
LÉGENDE

Manganèse (ppm)

Mn

1 - 269	•	2852 - 5700	●
270 - 393	+	5701 - 7860	●
394 - 601	⊙		
602 - 1426	•		
1427 - 2851	●		

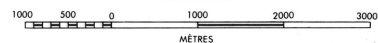
HISTOGRAMME MN



GÉOCHIMIE DES SOLS
RÉGION D'ACTON VALE

par: M. Leduc

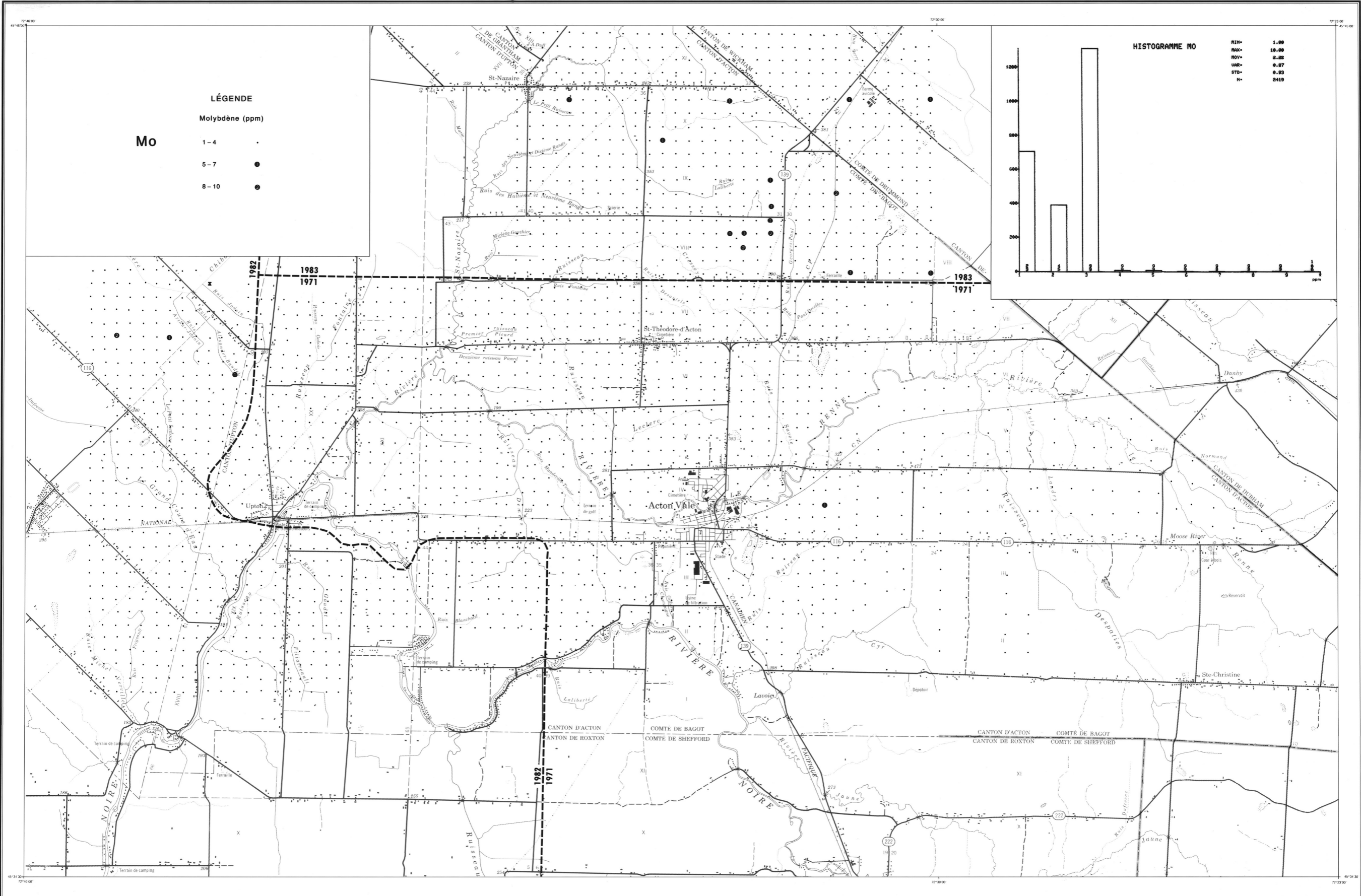
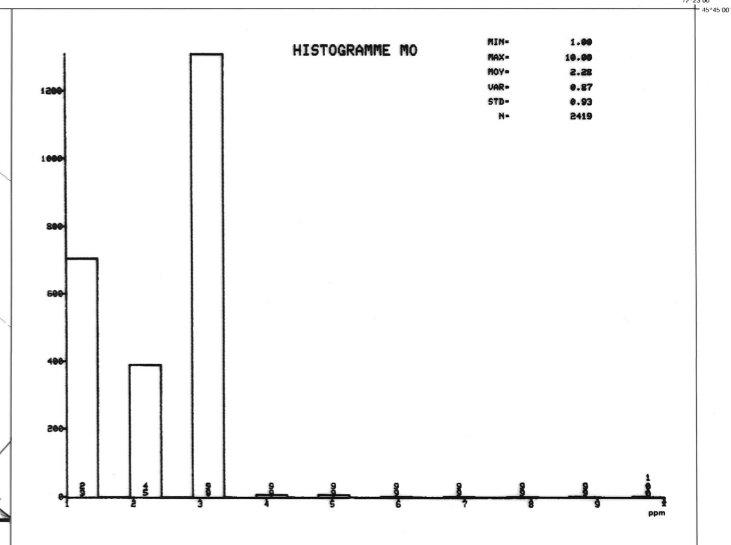
Échelle 1: 50 000



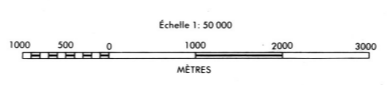
LÉGENDE
Molybdène (ppm)

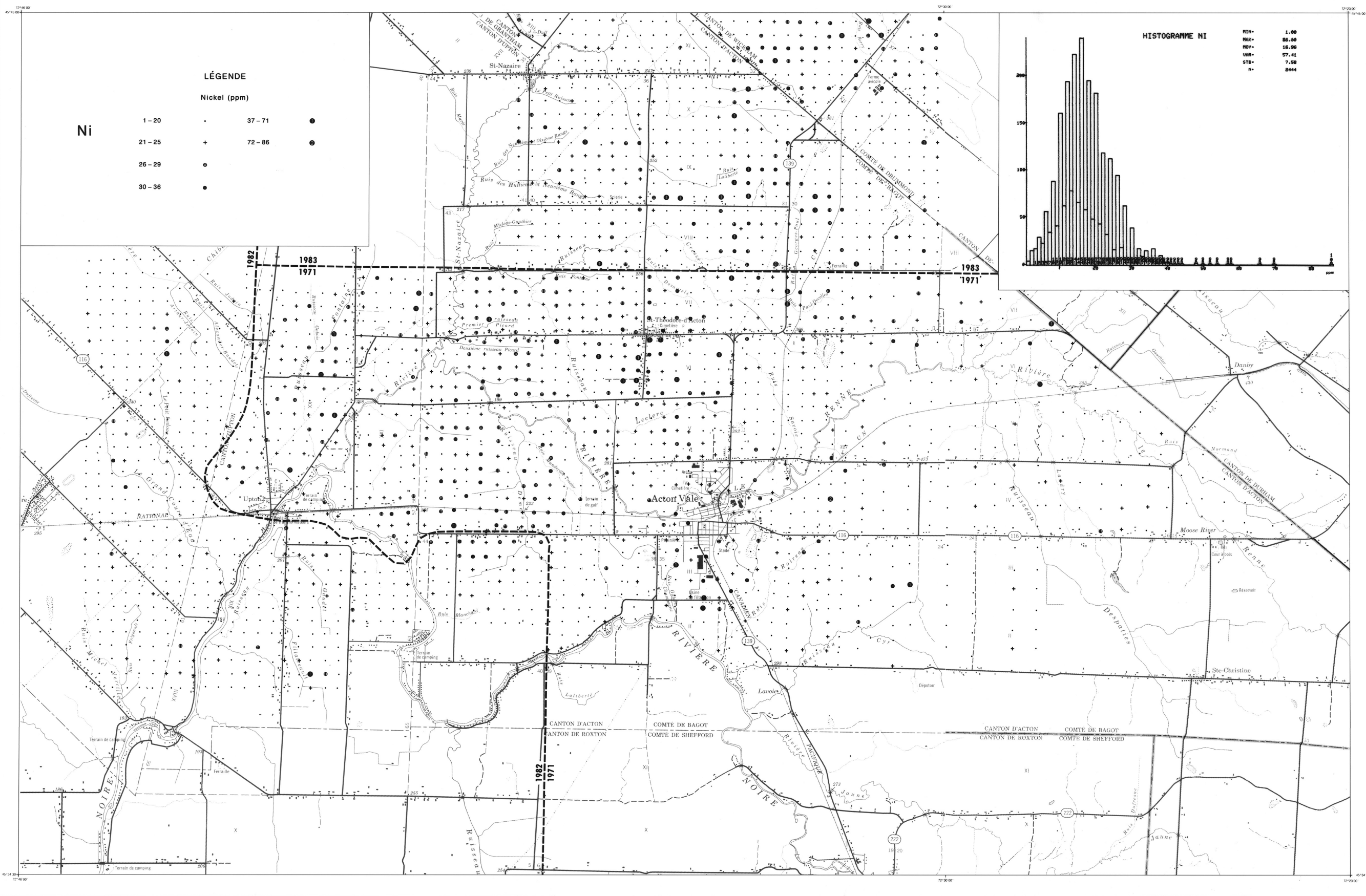
Mo

1-4 ·
5-7 ●
8-10 ●

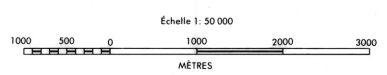


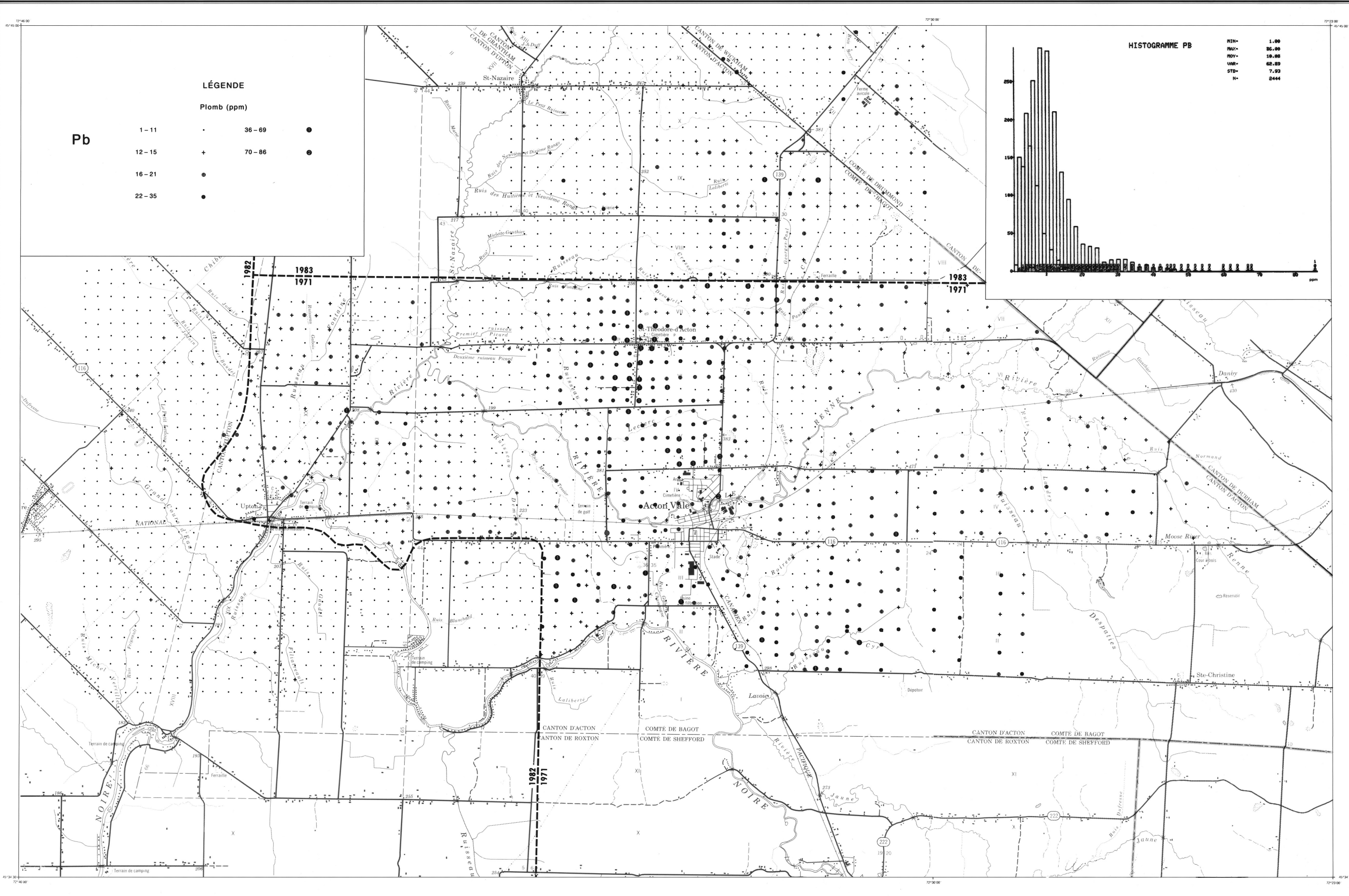
GÉOCHIMIE DES SOLS
RÉGION D'ACTON VALE
par: M. Leduc



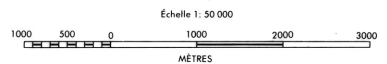


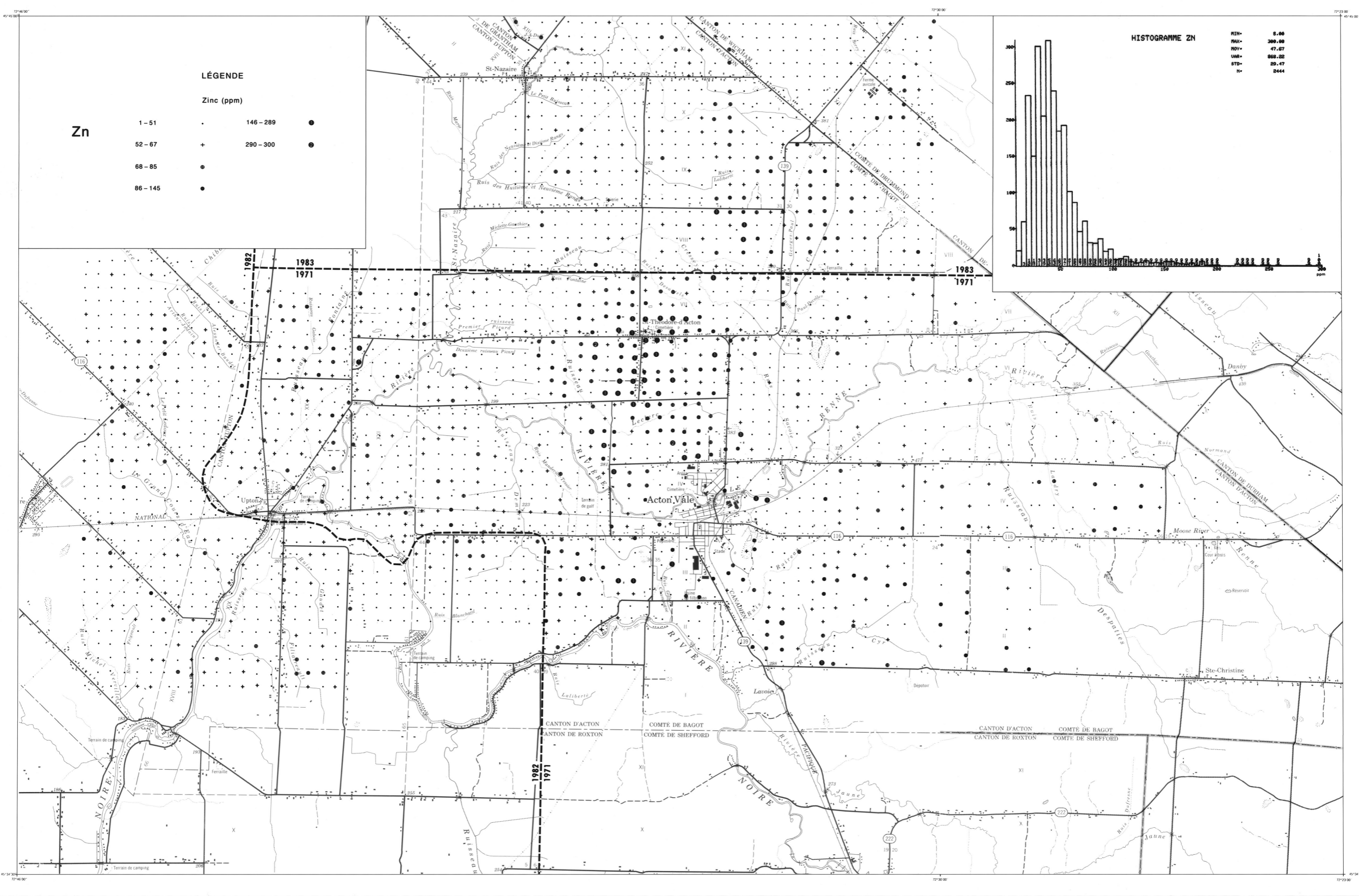
GÉOCHIMIE DES SOLS
RÉGION D'ACTON VALE
par: M. Leduc





GÉOCHIMIE DES SOLS
RÉGION D'ACTON VALE
par: M. Leduc





GÉOCHIMIE DES SOLS
RÉGION D'ACTON VALE
par: M. Leduc

