

# FORMATIONS

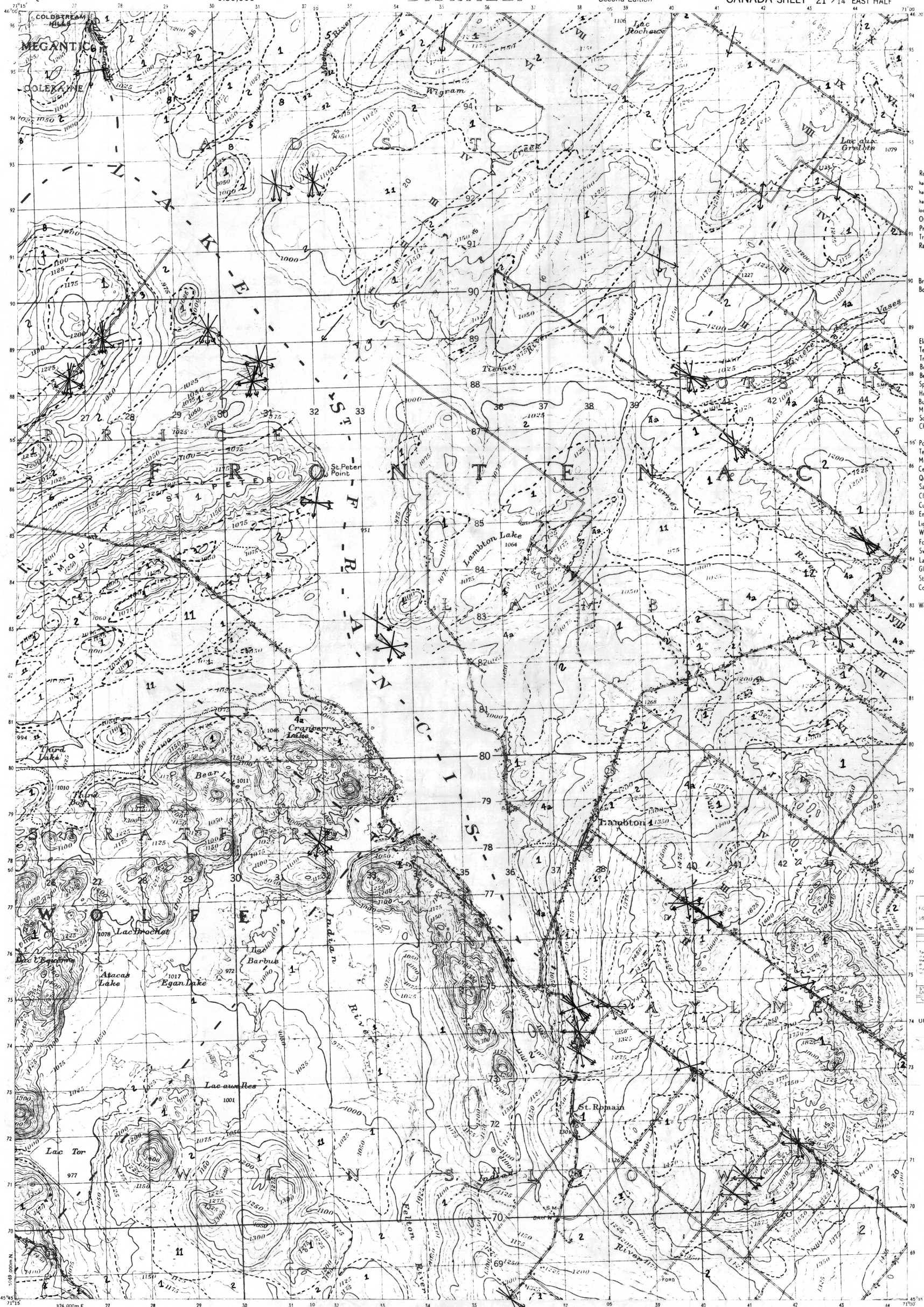
## DISRAELI

Second Edition

CANADA SHEET 21 E/14 EAST HALF

QUEBEC

1:50,000



CANADA  
DEPARTMENT OF NATIONAL DEFENCE  
ARMY SURVEY ESTABLISHMENT

### REFERENCE

- Roads:
  - 3 or more lanes: Part completed
  - 2 lanes: Route No.
  - hard surface: heavy duty
  - hard surface: medium duty
  - loose surface: graded and drained
  - Private Road
  - Other Roads
  - Trail
- Railway: double track, single track, abandoned, narrow gauge or electric
- Bridge, underpass or overpass
- Boundaries: International, Provincial, County, Township, Seignior or Parish, Reservation, Indian, Military, Nat or Prov Parks etc.
- Electric Power Line
- Telephone: trunk route, Triangulation Station
- Boundary of Survey Monument
- Bench Mark
- Spot Elevation: (in feet)
- House: Barn
- Buildings
- Mill or Factory: small, Saw Mill etc.
- Church
- Post Office
- Telephone Exchange
- Mine or Open Cut
- Cemetery or Churchyard
- Quarry
- Sand or Gravel Pit
- Cliff
- Cuttings
- Embankment, Dump, etc.
- Lighthouse
- Wharf or Pier
- Foreshore Flats
- Swamp or Marsh
- Lake or Slough, non permanent
- Glacier or Snowfield
- Stream, intermittent
- Contours: depression, wooded Areas: heavy, light

APPROXIMATE MEAN DECLINATION 1952  
FOR CENTRE OF SHEET  
Annual magnetic change 15 easterly

TO GIVE GRID REFERENCE ON THIS SHEET  
FOLLOW THE UNDER-GIVEN PROCEDURE: (1) Find the grid square in which the point of interest is located. (2) Read the grid reference from the margin of the map. (3) Use ONLY THE LATTER FIGURES ADDED IN THE MARGIN ON THE FACE OF THE MAP. (4) See 330

POINT SCHOOL	
EAST	NORTH
333	78
333	78
333	78

STANDARD MILITARY GRID REFERENCE  
333786

ONE THOUSAND METRE  
UNIVERSAL TRANSVERSE MERCATOR GRID  
ZONE 19

INDEX TO ADJOINING SHEETS

21 1/4 21 1/2 21 3/4
21 1/2 21 3/4 21 1/4
21 1/2 21 3/4 21 1/2 21 3/4

See "Index to Maps Available for sheets published"

DISRAELI  
21 E/14 EAST HALF  
SECOND EDITION

326,000 m. E. Surveyed, compiled, drawn and printed by the Army Survey Est. R.C.E. 1929. Aerial photography by R.C.A.F. 1928. Converted from the 1:63,360 map to 1:50,000 by the A.S.E. 1952.

MAGNETIC DECLINATION 18° 31' WEST AT CENTRE OF SHEET, 1952. Annual magnetic change 15 easterly.

Scale 1:50,000

CONTOUR INTERVAL 25 FEET. All Elevations in Feet above Mean Sea Level. CONVERSION SCALE FOR ELEVATIONS.

Ministère des Richesses Naturelles, Québec  
SERVICE DE LA DOCUMENTATION TECHNIQUE  
Date: \_\_\_\_\_  
No. DP-261 1/2

