

- Diabase (in part Pré-Cobalt) / Diabase (en partie Pré-Cobalt)
- Cobalt sediments / Sédiments de Cobalt
- Granite: (1A) granodiorite, syenite / Granite: (1A) granodiorite, syénite
- Diorite, gabbro, diabase / Diorite, gabbro, diabase
- Peridotite / Péridotite
- Temiscamian-Type sediments / Sédiments du type temiscamiens

KEEWATIN-TYPE ROCKS / ROCCHES DU TYPE KEEWATIN

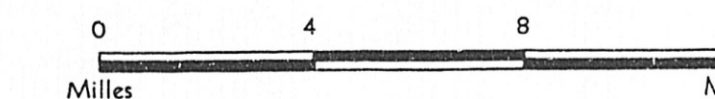
- Acidic flows / Couloirs acides
- Intermediate and basic flows / Couloirs intermédiaires et basiques
- Pyroclastics / Roches pyroclastiques

SYMBOLS - SYMBOLES

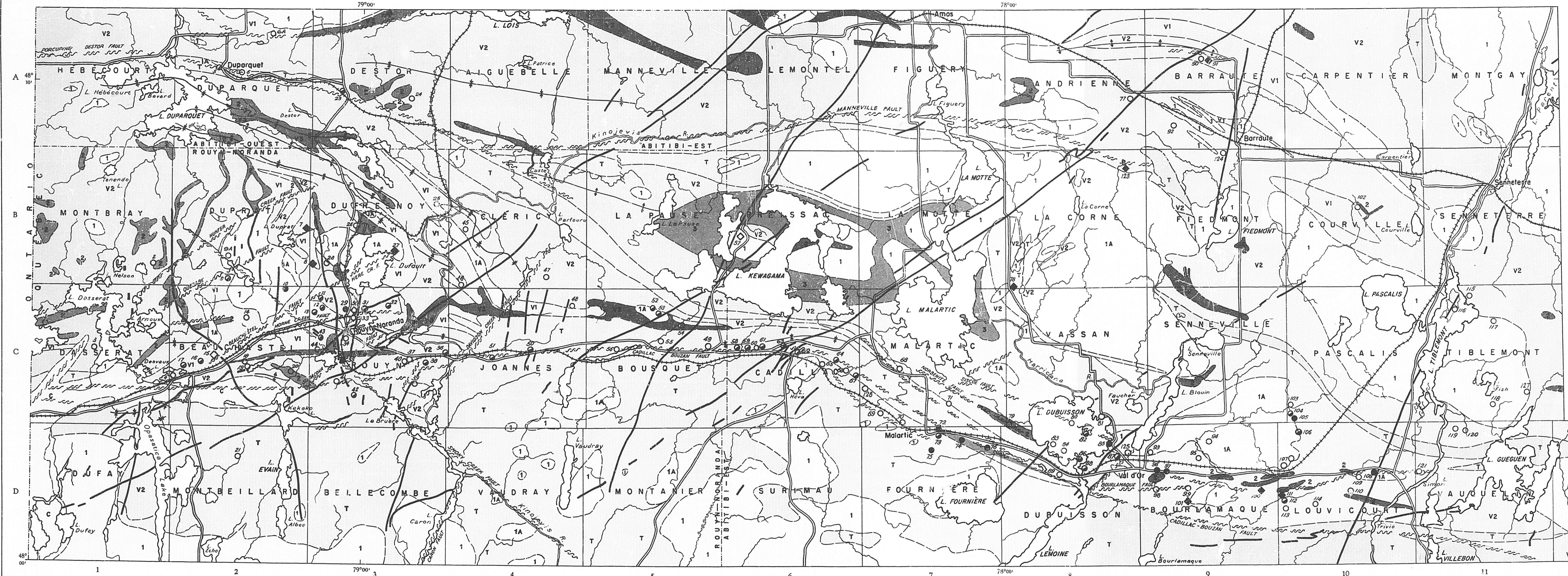
- Gold producers / Producteurs d'or
- Base metal producers / Producteurs de bas métal
- Gold and base metal producers / Producteurs d'or et de bas métal
- Former gold producers / Mine d'or fermée
- Former base metal producers / Mine de bas métal fermée
- Exploration shaft / Puits d'exploration
- Fault / Faille
- Synclinal axis / Axe de synclinal
- Anticlinal axis / Axe d'anticlinal

Geology compiled by: / Géologie compilée par: J. DUGAS et J. E. GILBERT 1953

Revised by: / Révisée par: M. LATULIPPE 1956



From maps by the Department of Mines and Technical Surveys, Ottawa, and the Department of Mines, Québec.



COMPAGNIES MINIÈRES

1	BORBULAC	C-1	12	POWELL ROUYN	C-3	25	COPPER-HILL	B-3	38	McWATERS	C-3
2	ROSEMONTBRAY	C-1	13	NEW MARLON	B-3	26	NORBEC	B-3	39	ADANAC	C-3
3	MORACH	C-1	14	ARVANIS	B-3	27	MACDONALD	B-3	40	DOVERCLIFF	C-3
4	LAC FORTUNE	A-2	15	WEST WASA	C-3	28	LAKE DUFALUT	C-3	41	CONS. ASTORIA	C-3
5	BEATTIE-DUQUESNE	A-2	16	NEW ANFIELD	C-3	29	JOLET-COUREC	C-3	42	OLD HILL	C-3
6	CENTRAL DUPARQUET	A-2	17	FRANCOEUR	C-3	30	OLEMONT	C-3	43	NEW SENATOR-ROUYN	C-3
7	WAITE	B-3	18	LAK WASA	C-3	31	BONDA	C-3	44	PARBEE	C-3
8	AMULET	B-3	19	WINGAIT	C-3	32	DELONA	C-3	45	HARVEY	C-3
9	QUEBEC	B-3	20	FATZOOKA	C-3	33	NORANDA	C-3	46	CLAREMONT	C-3
10	ELDRICH	B-3	21	NEW NORZONE	C-3	34	BAGANAMA	C-3	47	BOUCHARD	C-3
11	ANGLO-ROUYN	C-3	22	LYNDHURST	A-3	35	STAPACONA	C-3	48	ARROWHEAD	C-3
			23	DUQUESNE	A-3	36	NEW ROUYN MERGER	C-3	49	BOUCADILLAC	C-3
			24	NEW THURBOIS	A-3	37	CLERNO	C-3	50	HOSCO	C-3

MINING COMPANIES

51	HEVA	C-4	64	LAPA CADILLAC	C-6	77	RANDALL	A-8	90	PERSHCOURT	A-9
52	UNITED MIC MAC	C-4	65	MARITIME CADILLAC	C-6	78	MOLYBDENITE	B-8	91	FERON	A-9
53	MOGOLA	C-4	66	ANGUS	C-6	79	NICHLARIC	B-8	92	BARYLE	A-9
54	WESTWOOD CADILLAC	C-4	67	WEST MALARTIC	C-6	80	WESTERN QUÉBEC	C-8	93	PASCALS	A-9
55	L'ARVA	C-4	68	NORTH MALARTIC	C-6	81	NORTH SISCOE	C-8	94	NEW FORMAQUE	D-9
56	CALDER-BOUSQUET	C-4	69	PASBEC MALARTIC	C-6	82	SISCOE	D-8	95	NEW BIDLAMAQUE	D-9
57	INDIAN MOLYBDENUM	C-4	70	EAST AMPHIL	C-6	83	SIENNA	D-8	96	NEW FORMAQUE	D-9
58	NEW ALGER	C-4	71	MINDALARTIC	C-6	84	WISIK	D-8	97	LAMAQUE	D-9
59	OPBIEN	C-4	72	BARNAT	D-7	85	SULLIVAN	D-8	98	NEW MYLAMAQUE	D-9
60	KEWAGAMA	C-4	73	SLAEN MALARTIC	D-7	86	SHAWNEY	D-8	99	LOUVICOURT	D-9
61	CONS. CENTRAL CADILLAC	C-4	74	EAST MALARTIC	D-7	87	JACOLA	D-8	100	GOLDEN MANITOU	D-9
62	ARMI	C-4	75	CANADIAN MALARTIC	D-7	88	EAST SULLIVAN	D-8	101	LAPASA	D-9
63	PANDORA CADILLAC	C-4	76	MALARTIC GOLDFIELDS	D-7	89	ELMAC	D-8	102	PERSHING MANITOU	D-9
									103	RESENER	B-10
									104	PERON	A-9
									105	PASCALS	A-9
									106	COLIGNON	D-9
									107	BEACON	D-9
									108	BEACON	D-9
									109	BEACON	D-9
									110	VICOURT	D-9
									111	YENDONE	B-9
									112	LOUVICOURT	D-9
									113	LEGAUT	D-8
									114	CONSUMING & SMELTING	D-8
									115	SMITH-TIBLEMONT	C-7

Carte préparée pour publication par le SERVICE DE DESSIN ET DE CARTOGRAPHIE DU MINISTÈRE DES MINES

Map prepared for publication by the DRAUGHTING AND CARTOGRAPHY BRANCH OF THE DEPARTMENT OF MINES